

District I
1625 N. French Dr., Hobbs, NM 88240

District II
811 South First, Artesia, NM 88210

District III
1000 Rio Brazos Road, Aztec, NM 87410

District IV
2040 South Pacheco, Santa Fe, NM 87505

State of New Mexico
Energy Minerals and Natural Resources

Form C-101
Revised March 17, 1999

Oil Conservation Division
2040 South Pacheco
Santa Fe, NM 87505

Submit to appropriate District Office
State Lease - 6 Copies
Fee Lease - 5 Copies

AMENDED REPORT

APPLICATION FOR PERMIT TO DRILL, RE-ENTER, DEEPEN, PLUGBACK, OR ADD A ZONE

¹ Operator Name and Address Xeric Oil & Gas Corporation PO Box 352 Midland, Texas 79702		² OGRID Number 025482
³ Property Code 29655		⁴ Property Name PORFIDIO STATE
		⁵ APT Number 30-025-35890
		⁶ Well No. #1

⁷ Surface Location

UL or lot no.	Section	Township	Range	Lot Idn	Feet from the	North/South line	Feet from the	East/West line	County
M	17	20-S	39-E		660'	South	660'	West	Lea

⁸ Proposed Bottom Hole Location If Different From Surface

UL or lot no.	Section	Township	Range	Lot Idn	Feet from the	North/South line	Feet from the	East/West line	County
⁹ Proposed Pool 1 DK-ABO/Blinebry Oil & Gas					¹⁰ Proposed Pool 2 DK Drinkard/Tubb Warren East				

¹¹ Work Type Code N	¹² Well Type Code 0	¹³ Cable/Rotary R	¹⁴ Lease Type Code S	¹⁵ Ground Level Elevation 3531'
¹⁶ Multiple No	¹⁷ Proposed Depth 8500'	¹⁸ Formation ABO	¹⁹ Contractor Key Energy	²⁰ Spud Date ASAP

²¹ Proposed Casing and Cement Program

Hole Size	Casing Size	Casing weight/foot	Setting Depth	Sacks of Cement	Estimated TOC
12 1/4"	8 5/8"	24#	1600'	800	Surface
7 7/8"	5 1/2"	17#	8500'	900	2800'

²² Describe the proposed program. If this application is to DEEPEN or PLUG BACK, give the data on the present productive zone and proposed new productive zone.

Describe the blowout prevention program, if any. Use additional sheets if necessary.

1. Drill 12 1/4" hole w/fresh water to approximately 1600' or hard formation.
2. Set 8 5/8" csg & cement w/600 sx "C" + 4% gel + 2% Cac12 + tail w/200 sx "C" + 2% Cac12 - circulate cement to surface.
3. Drill 7 7/8" hole w/brine water to 8500'. Run open hole logs.
4. Set 5 1/2" csg @ 7900' cement w/555 sx "H" 35:65 poz + 6% gel + 5% salt + .25% celloflake - tail w/345 sx "H" - TOC @ 2800' to sufficiently cover the Yates formation.

²³ I hereby certify that the information given above is true and complete to the best of my knowledge and belief.

Signature: *Glenda Hunt*

Printed name: Glenda Hunt

Title: Senior Production Analyst

Date: 4/9/02

Phone: (915) 683-3171

OIL CONSERVATION DIVISION

Approved by:

ORIGINAL SIGNED BY
PAUL F. KAUTZ
PETROLEUM ENGINEER

Title:

Approval Date:

Expiration Date:

Conditions of Approval APR 12 2002

Attached

Permit Expires 1 Year From Approval
Date Unless Drilling Underway

S
C
A

DISTRICT I
P.O. Box 1980, Hobbs, NM 88241-1980

State of New Mexico
Energy, Minerals and Natural Resources Department

Form C-102
Revised February 10, 1994
Submit to Appropriate District Office
State Lease - 4 Copies
Fee Lease - 3 Copies

DISTRICT II
P.O. Drawer DD, Artesia, NM 88211-0719

OIL CONSERVATION DIVISION
P.O. Box 2088
Santa Fe, New Mexico 87504-2088

DISTRICT III
1000 Rio Brazos Rd., Aztec, NM 87410

DISTRICT IV
P.O. BOX 2088, SANTA FE, N.M. 87504-2088

WELL LOCATION AND ACREAGE DEDICATION PLAT

AMENDED REPORT

API Number 38-025-35890	Pool Code 15200	Pool Name DK-ABO
Property Code 29655	Property Name PORFIDIO STATE	Well Number 1
OGRID No. 025482	Operator Name XERIC OIL & GAS CORPORATION	Elevation 3531'

Surface Location

UL or lot No.	Section	Township	Range	Lot Idn	Feet from the	North/South line	Feet from the	East/West line	County
M	17	20-S	39-E		660	SOUTH	660	WEST	LEA

Bottom Hole Location If Different From Surface

UL or lot No.	Section	Township	Range	Lot Idn	Feet from the	North/South line	Feet from the	East/West line	County

Dedicated Acres	Joint or Infill	Consolidation Code	Order No.
40	No		

NO ALLOWABLE WILL BE ASSIGNED TO THIS COMPLETION UNTIL ALL INTERESTS HAVE BEEN CONSOLIDATED OR A NON-STANDARD UNIT HAS BEEN APPROVED BY THE DIVISION

	<p>OPERATOR CERTIFICATION</p> <p><i>I hereby certify the the information contained herein is true and complete to the best of my knowledge and belief.</i></p> <p><i>Glenda Hunt</i> Signature Glenda Hunt Printed Name Sr. Production Analyst Title 4/9/02 Date</p>
	<p>SURVEYOR CERTIFICATION</p> <p><i>I hereby certify that the well location shown on this plat was plotted from field notes of actual surveys made by me or under my supervision and that the same is true and correct to the best of my belief.</i></p> <p>MARCH 29, 2002</p> <p>Date Surveyed _____ AWB</p> <p>Signature of _____ Professional Surveyor</p> <p><i>Ronald S. Edison</i> Professional Surveyor 02.11.02368</p>
	<p>Certificate No. RONALD S. EDISON 3239 GARY EDISON 12841</p>

DISTRICT I
P.O. Box 1980, Hobbs, NM 88241-1980

State of New Mexico

Energy, Minerals and Natural Resources Department

Form C-102
Revised February 10, 1994
Submit to Appropriate District Office
State Lease - 4 Copies
Fee Lease - 3 Copies

DISTRICT II
P.O. Drawer DD, Artesia, NM 88211-0719

OIL CONSERVATION DIVISION

P.O. Box 2088

Santa Fe, New Mexico 87504-2088

DISTRICT III
1000 Rio Brazos Rd., Aztec, NM 87410

DISTRICT IV
P.O. BOX 2088, SANTA FE, N.M. 87504-2088

WELL LOCATION AND ACREAGE DEDICATION PLAT

AMENDED REPORT

API Number	Pool Code 06660	Pool Name Blinebry Oil & Gas
Property Code 29655	Property Name PORFIDIO STATE	Well Number 1
OGRID No. 025482	Operator Name XERIC OIL & GAS CORPORATION	Elevation 3531'

Surface Location

UL or lot No.	Section	Township	Range	Lot Idn	Feet from the	North/South line	Feet from the	East/West line	County
M	17	20-S	39-E		660	SOUTH	660	WEST	LEA

Bottom Hole Location If Different From Surface

UL or lot No.	Section	Township	Range	Lot Idn	Feet from the	North/South line	Feet from the	East/West line	County
Dedicated Acres 40	Joint or Infill No	Consolidation Code	Order No.						

NO ALLOWABLE WILL BE ASSIGNED TO THIS COMPLETION UNTIL ALL INTERESTS HAVE BEEN CONSOLIDATED OR A NON-STANDARD UNIT HAS BEEN APPROVED BY THE DIVISION

	LOT 1	TEXAS	<p>OPERATOR CERTIFICATION</p> <p><i>I hereby certify the the information contained herein is true and complete to the best of my knowledge and belief.</i></p> <p><u>Glenda Y. Hunt</u> Signature</p> <p>Glenda Hunt Printed Name</p> <p>Sr. Production Analyst Title</p> <p>4/9/02 Date</p>
	29.02 AC		<p>SURVEYOR CERTIFICATION</p> <p><i>I hereby certify that the well location shown on this plat was plotted from field notes of actual surveys made by me or under my supervision and that the same is true and correct to the best of my belief.</i></p> <p>MARCH 29, 2002 Date Surveyed</p> <p>AWB</p> <p>Signature & Seal of Professional Surveyor <u>Ronald J. Eidson</u> 4/01/02</p> <p>02.11.0236</p>
	LOT 2		<p>Certificate No. RONALD J. EIDSON 3239 GARY EIDSON 12641</p>
	29.07 AC		
	LOT 3		
29.11 AC			
LOT 4			
29.16 AC			

DISTRICT I
P.O. Box 1980, Hobbs, NM 88241-1980

State of New Mexico

Energy, Minerals and Natural Resources Department

Form C-102

Revised February 10, 1994

Submit to Appropriate District Office

State Lease - 4 Copies

Fee Lease - 3 Copies

DISTRICT II
P.O. Drawer DD, Artesia, NM 88211-0719

OIL CONSERVATION DIVISION

P.O. Box 2088

Santa Fe, New Mexico 87504-2088

DISTRICT III
1000 Rio Brazos Rd., Aztec, NM 87410

DISTRICT IV
P.O. BOX 2088, SANTA FE, N.M. 87504-2088

WELL LOCATION AND ACREAGE DEDICATION PLAT

AMENDED REPORT

API Number	Pool Code 15390	Pool Name DK Drinkard
Property Code 29655	Property Name PORFIDIO STATE	Well Number 1
OCRID No. 025482	Operator Name XERIC OIL & GAS CORPORATION	Elevation 3531'

Surface Location

UL or lot No.	Section	Township	Range	Lot Idn	Feet from the	North/South line	Feet from the	East/West line	County
M	17	20-S	39-E		660	SOUTH	660	WEST	LEA

Bottom Hole Location If Different From Surface

UL or lot No.	Section	Township	Range	Lot Idn	Feet from the	North/South line	Feet from the	East/West line	County

Dedicated Acres 40	Joint or Infill No	Consolidation Code	Order No.
-----------------------	-----------------------	--------------------	-----------

NO ALLOWABLE WILL BE ASSIGNED TO THIS COMPLETION UNTIL ALL INTERESTS HAVE BEEN CONSOLIDATED OR A NON-STANDARD UNIT HAS BEEN APPROVED BY THE DIVISION

	LOT 1	TEXAS	<p>OPERATOR CERTIFICATION</p> <p><i>I hereby certify the the information contained herein is true and complete to the best of my knowledge and belief.</i></p> <p><i>Glenda Hunt</i> Signature</p> <p>Glenda Hunt Printed Name</p> <p>Sr. Production Analyst Title</p> <p>4/9/02 Date</p>
	29.02 AC		
	LOT 2		
	29.07 AC		
	LOT 3		
29.11 AC	<p>SURVEYOR CERTIFICATION</p> <p><i>I hereby certify that the well location shown on this plat was plotted from field notes of actual surveys made by me or under my supervision and that the same is true and correct to the best of my belief.</i></p> <p>MARCH 29, 2002 Date Surveyed</p> <p>AWB Signature & Seal of Professional Surveyor</p> <p><i>Ronald J. Eidson</i> 4/01/02 02.11.0236</p>		
LOT 4	Certificate No. RONALD J. EIDSON 3239 GARY EIDSON 12641		
29.16 AC			

DISTRICT I
P.O. Box 1980, Hobbs, NM 88241-1980

State of New Mexico

Energy, Minerals and Natural Resources Department

Form C-102
Revised February 10, 1994

DISTRICT II
P.O. Drawer DD, Artesia, NM 88211-0719

OIL CONSERVATION DIVISION

Submit to Appropriate District Office
State Lease - 4 Copies
Fee Lease - 3 Copies

DISTRICT III
1000 Rio Brazos Rd., Aztec, NM 87410

P.O. Box 2088

Santa Fe, New Mexico 87504-2088

DISTRICT IV
P.O. BOX 2088, SANTA FE, N.M. 87504-2088

WELL LOCATION AND ACREAGE DEDICATION PLAT

AMENDED REPORT

API Number	Pool Code 60240 87085	Tubb	Pool Name East Warren
Property Code 29655	Property Name PORFIDIO STATE		Well Number 1
OGRID No. 025482	Operator Name XERIC OIL & GAS CORPORATION		Elevation 3531'

Surface Location

UL or lot No.	Section	Township	Range	Lot Idn	Feet from the	North/South line	Feet from the	East/West line	County
M	17	20-S	39-E		660	SOUTH	660	WEST	LEA

Bottom Hole Location If Different From Surface

UL or lot No.	Section	Township	Range	Lot Idn	Feet from the	North/South line	Feet from the	East/West line	County

Dedicated Acres 40	Joint or Infill NO	Consolidation Code	Order No.
-----------------------	-----------------------	--------------------	-----------

NO ALLOWABLE WILL BE ASSIGNED TO THIS COMPLETION UNTIL ALL INTERESTS HAVE BEEN CONSOLIDATED OR A NON-STANDARD UNIT HAS BEEN APPROVED BY THE DIVISION

		LOT 1		
		29.02 AC		
		LOT 2		
		29.07 AC		
		LOT 3		
		29.11 AC		
		LOT 4		
		29.16 AC		

TEXAS

OPERATOR CERTIFICATION

I hereby certify the the information contained herein is true and complete to the best of my knowledge and belief.

Glenda Y Hunt
Signature
Glenda Hunt
Printed Name
Sr. Production Analyst
Title
4/9/02
Date

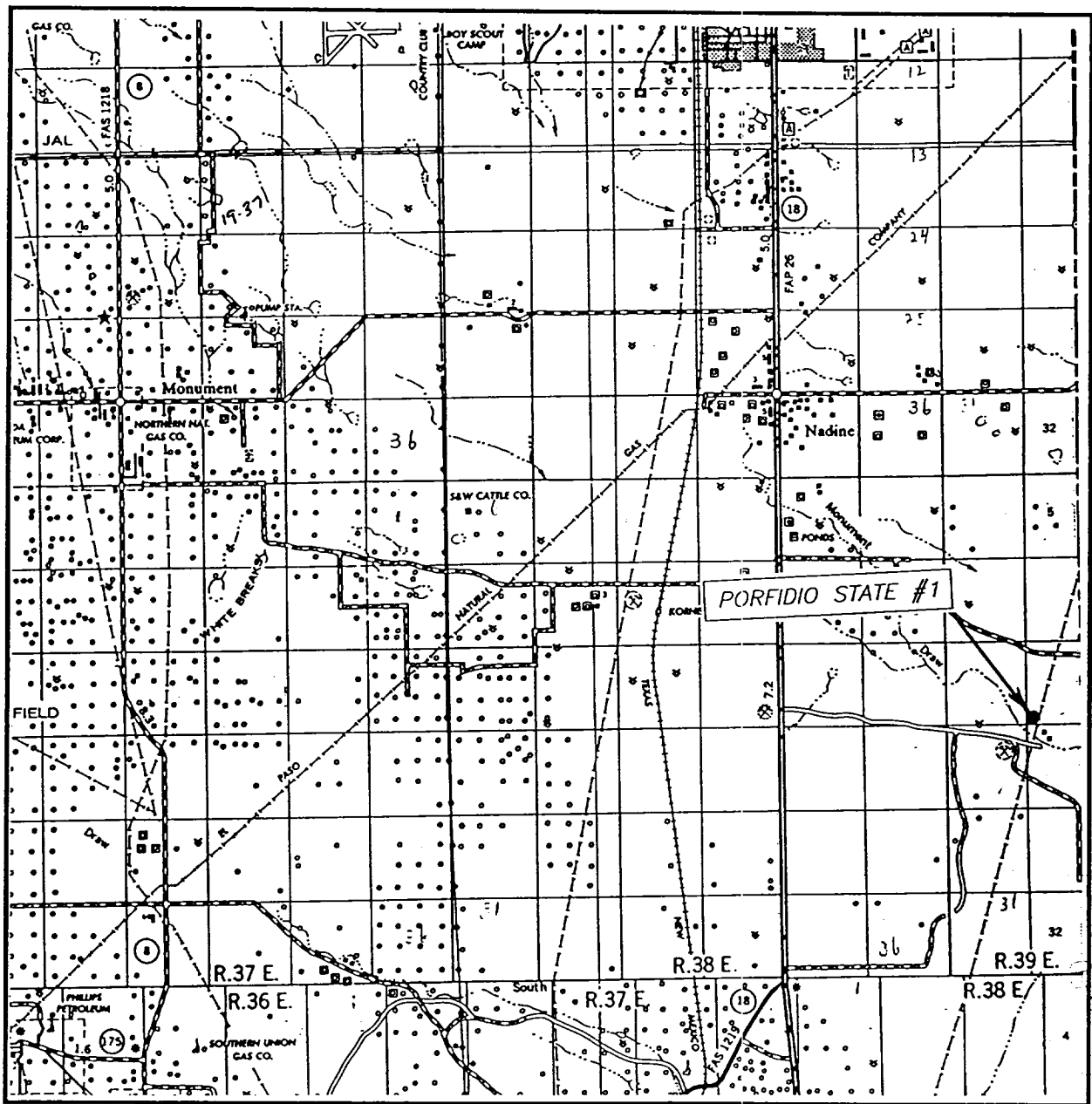
SURVEYOR CERTIFICATION

I hereby certify that the well location shown on this plat was plotted from field notes of actual surveys made by me or under my supervision and that the same is true and correct to the best of my belief.

MARCH 29, 2002
Date Surveyed
AWB
Signature & Seal of Professional Surveyor
Ronald J. Edson 4/01/02
02.11.0236

Certificate No. RONALD J. EDSON 3239
GARY EDSON 12641

VICINITY MAP



SCALE: 1" = 2 MILES

SEC. 17 TWP. 20-S RGE. 39-E

SURVEY _____ N.M.P.M. _____

COUNTY _____ LEA _____

DESCRIPTION 660' FSL & 660' FWL

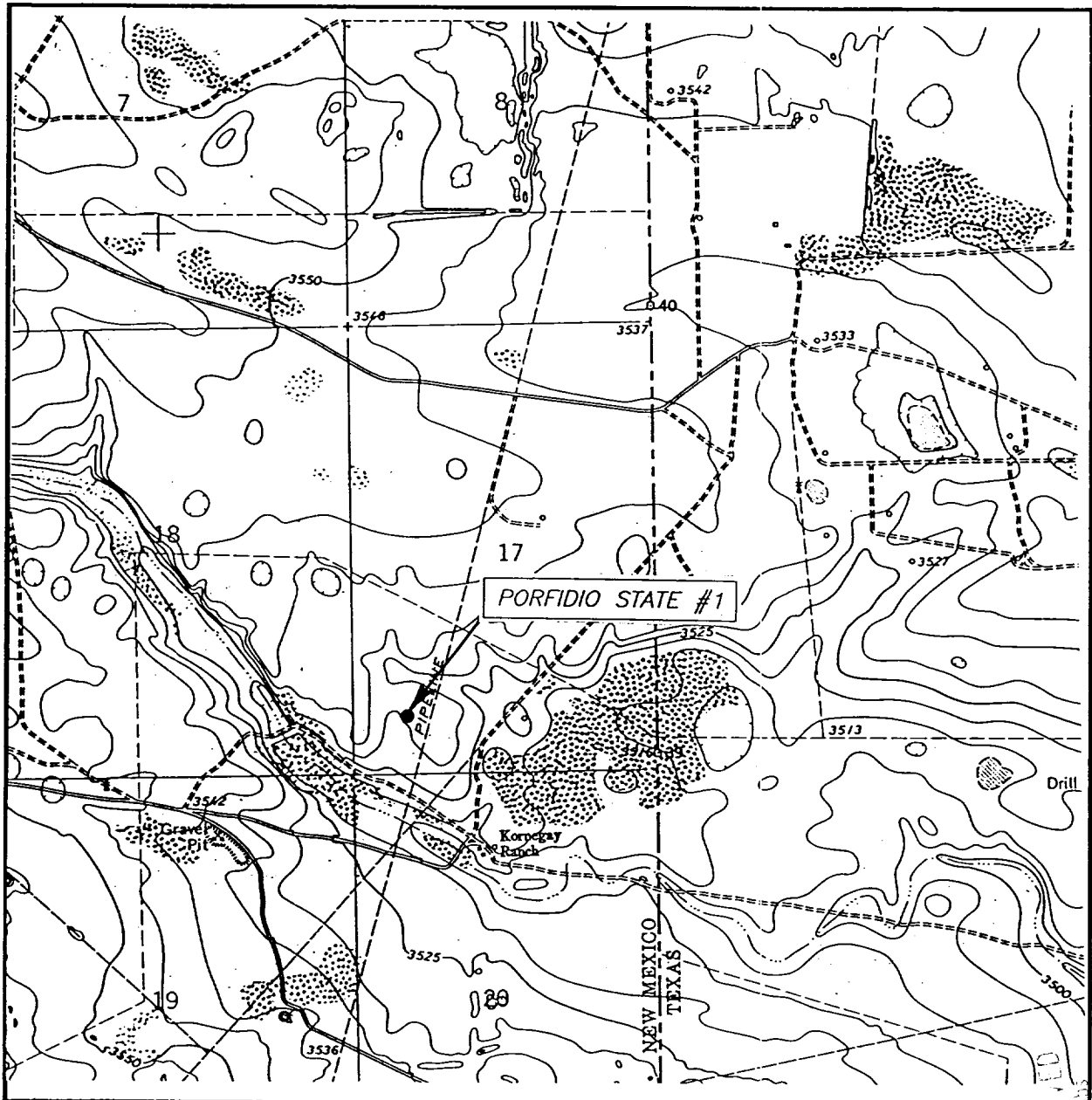
ELEVATION 3531'

OPERATOR XERIC OIL & GAS CORPORATION

LEASE PORFIDIO STATE

JOHN WEST SURVEYING
 HOBBS, NEW MEXICO
 (505) 393-3117

LOCATION VERIFICATION MAP



SCALE: 1" = 2000'

CONTOUR INTERVAL: 5'
HOBBS SE, N.M.

SEC. 17 TWP. 20-S RGE. 39-E

SURVEY _____ N.M.P.M. _____

COUNTY _____ LEA _____

DESCRIPTION 660' FSL & 660' FWL

ELEVATION 3531'

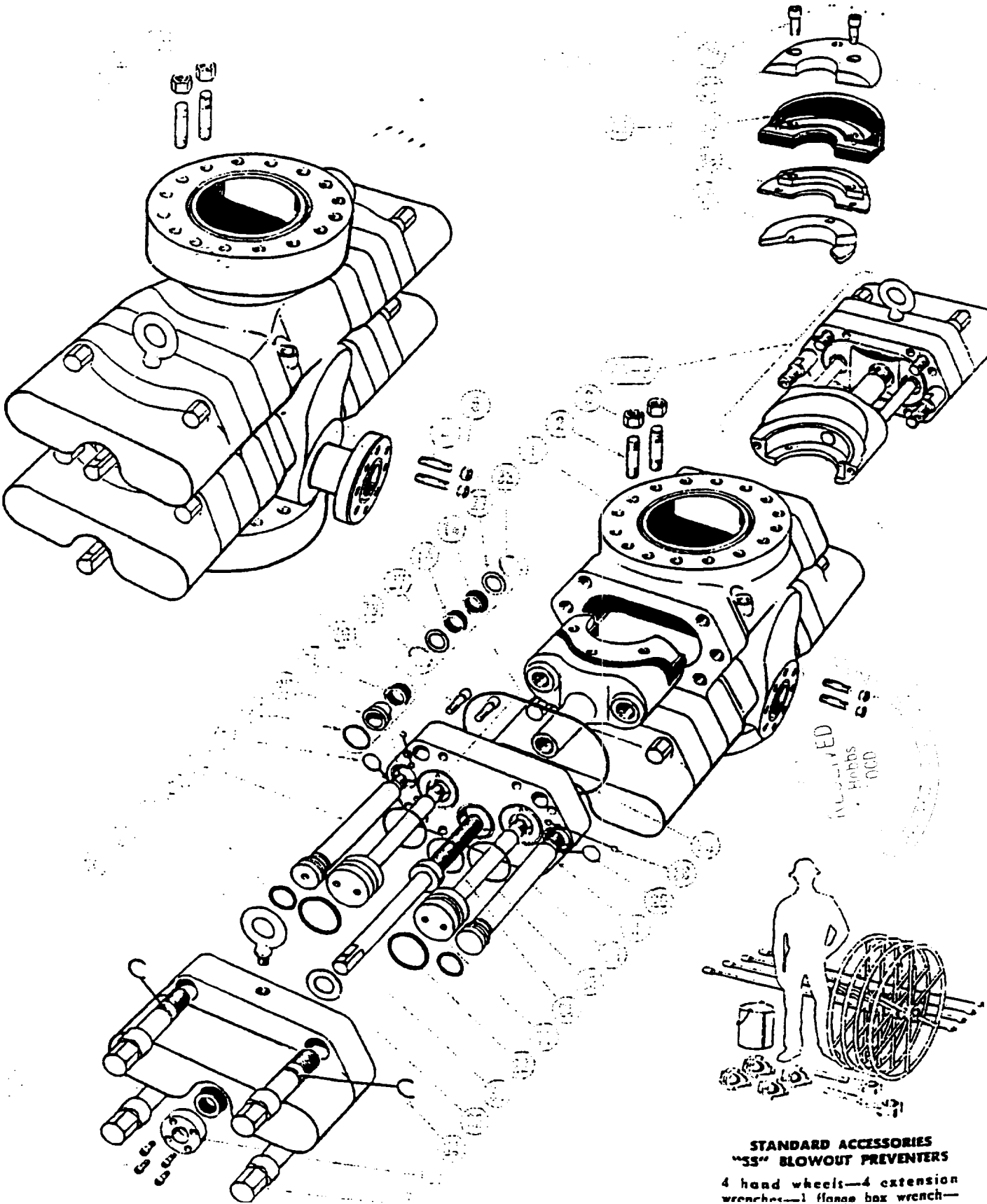
OPERATOR XERIC OIL & GAS CORPORATION

LEASE PORFIDIO STATE

U.S.G.S. TOPOGRAPHIC MAP
HOBBS SE, N.M.

JOHN WEST SURVEYING
HOBBS, NEW MEXICO
(505) 393-3117

Because of the tremendous improvements offered by these new
 blowout preventers, "33" and "35" preventers in the future will be made
 only on special order. New products continue to be developed
 and revised products are being introduced.



ILLUSTRATED BY
 Hobbs
 CO.

STANDARD ACCESSORIES
"33" BLOWOUT PREVENTERS
 4 hand wheels—4 extension
 wrenches—1 flange box wrench—

ELF

ABOVE DATE DOES NOT
INDICATE WHEN
CONFIDENTIAL LOGS
WILL BE RELEASED