

District I  
1625 N. French Dr., Hobbs, NM 88240

District II  
811 South First, Artesia, NM 88210

District III  
1000 Rio Brazos Rd., Aztec, NM 87410

District IV  
2040 South Pacheco, Santa Fe, NM 87505

State of New Mexico  
Energy, Minerals & Natural Resources Department

**OIL CONSERVATION DIVISION**  
2040 South Pacheco  
Santa Fe, NM 87505

Form C-101  
Revised March 17, 1999

Submit to appropriate District Office  
State Lease - 6 Copies  
Fee Lease - 5 Copies

AMENDED REPORT

**APPLICATION FOR PERMIT TO DRILL, RE-ENTER, DEEPEN, PLUGBACK, OR ADD A ZONE**

1 Operator Name and Address Apache Corporation 2000 Post Oak Blvd. Ste. 100 Houston, Texas 77056-4400		Attn: Debra J. Anderson		2 OGRID Number 000873
4 Property Code 23107		5 Property Name Grizzell		3 API Number 30-025-10115
				6 Well No. 7

**7 Surface Location**

UL or lot no.	Section	Township	Range	Lot Idn	Feet from the	North/South Line	Feet from the	East/West Line	County
J	8	22S	37E		2310	South	1650	East	Lea

**8 Proposed Bottom Hole Location If Different From Surface**

UL or lot no.	Section	Township	Range	Lot Idn	Feet from the	North/South Line	Feet from the	East/West Line	County
9 Proposed Pool 1 Eunice; San Andres, Southwest (24180)					10 Proposed Pool 2				

11 Work Type Code P	12 Well Type Code O	13 Cable/Rotary	14 Lease Type Code P	15 Ground Level Elevation 3410'
16 Multiple	17 Proposed Depth 6537' (TD)	18 Formation San Andres	19 Contractor	20 Spud Date ASAP

**21 Proposed Casing and Cement Program**

Hole Size	Casing Size	Casing weight/foot	Setting Depth	Sacks of Cement	Estimated TOC
17	13-3/8	48#	214	350	Surface
11	8-5/8	32#	2790	1500	Surface
7-7/8	5-1/2 Liner	17#	2595 - 6537	700	TOL @ 2595'

22 Describe the proposed program. If this application is to DEEPEN or PLUG BACK give the data on the present productive zone and proposed new productive zone. Describe the blowout prevention program, if any. Use additional sheets if necessary.

Grizzell # 7 is currently completed in the Blinebry Oil & Gas Pool with marginal production. Apache proposes to plugback the wellbore to the Eunice; San Andres, Southwest Pool

**Procedure: Set CIBP @ 5350' w/ 35' cement on top**  
**Perforate wellbore from 3770' - 4066'**

Permit Expires 1 Year From Approval Date Unless Drilling Underway  
*Plug-Back*

23 I hereby certify that the information given above is true and complete to the best of my knowledge and belief.		<b>OIL CONSERVATION DIVISION</b>	
Signature: <i>Debra J. Anderson</i>		Approved by: <i>CHRIS WILLIAMS</i> SUPERVISOR	
Printed Name: Debra J. Anderson		Title:	
Title: Sr. Engineering Technician		Approval Date: <i>AUG 21 2000</i>	Expiration Date:
Date: 8/23/00	Phone: 713-296-6338	Conditions of Approval: Attached <input type="checkbox"/>	

VNU

District I  
1625 N. French Drive, Hobbs, NM 88240

State of New Mexico  
Energy, Minerals and Natural Resources Department

Form C 102  
Revised October 18, 1994

District II  
P O Drawer DD, Artesia, NM 88210

**OIL CONSERVATION DIVISION**

Instruction on Back  
Submit to Appropriate District Office

2040 S. Pacheco

State Lease - 4 Copies

Santa Fe, New Mexico 87505

Fee Lease - 3 Copies

District III  
1000 Rio Brazos Rd., Aztec, NM 87410

AMENDED REPORT

District IV  
2040 South Pacheco, Santa Fe, NM 87505

**WELL LOCATION AND ACREAGE DEDICATION PLAT**

<sup>1</sup> API Number 30-025-10115		<sup>2</sup> Pool Code 24180		<sup>3</sup> Pool Name Eunice; San Andres, Southwest	
<sup>4</sup> Property Code 23107		<sup>5</sup> Property Name Grizzell			<sup>6</sup> Well Number 7
<sup>7</sup> OGRID No. 000873		<sup>8</sup> Operator Name Apache Corporation			<sup>9</sup> Elevation 3410'

<sup>10</sup> Surface Location

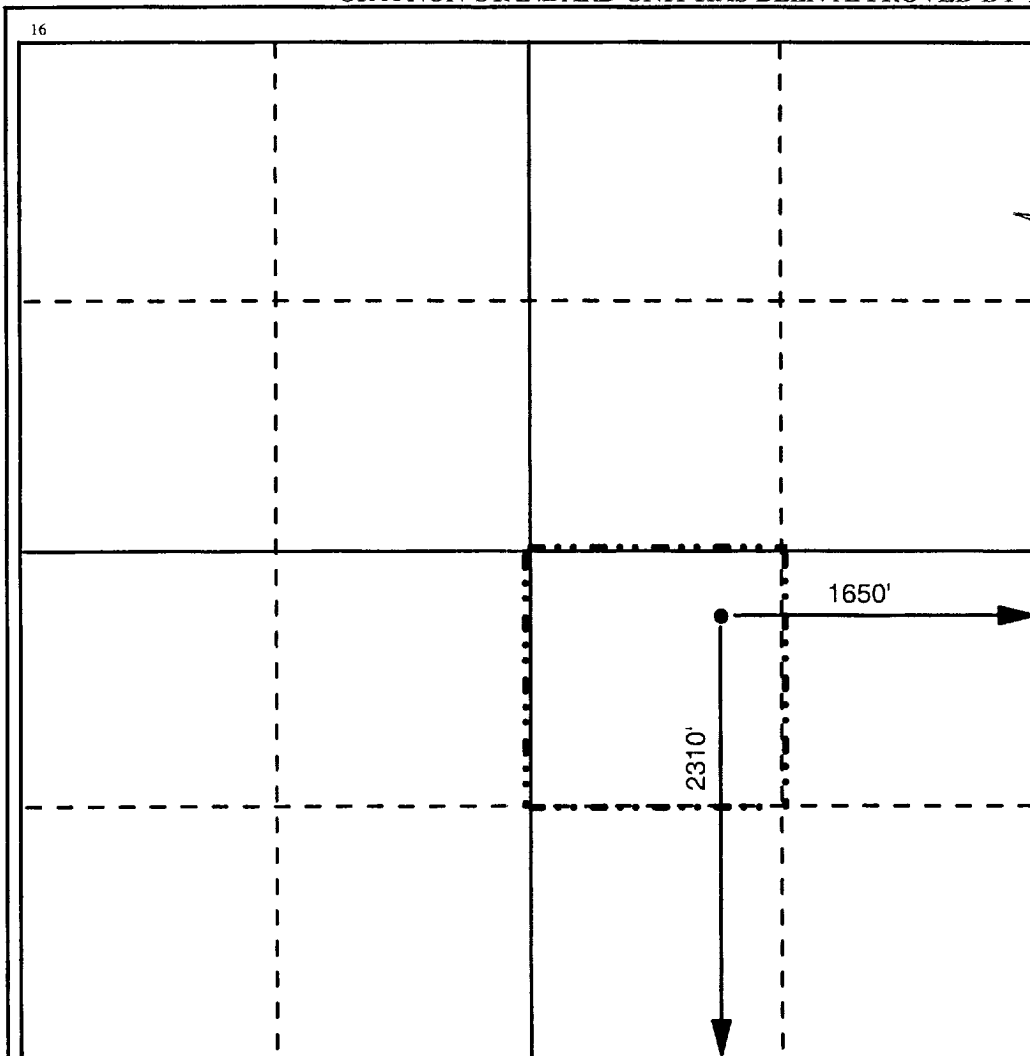
UL or Lot No. J	Section 8	Township 22S	Range 37E	Lot Idn	Feet from the 2310	North/South line South	Feet from the 1650	East/West line East	County Lea
--------------------	--------------	-----------------	--------------	---------	-----------------------	---------------------------	-----------------------	------------------------	---------------

<sup>11</sup> Bottom Hole Location If Different From Surface

UL or Lot No.	Section	Township	Range	Lot Idn	Feet from the	North/South line	Feet from the	East/West line	County
---------------	---------	----------	-------	---------	---------------	------------------	---------------	----------------	--------

<sup>12</sup> Dedicated Acres 40	<sup>13</sup> Joint or Infill	<sup>14</sup> Consolidation Code	<sup>14</sup> Order No.
-------------------------------------	-------------------------------	----------------------------------	-------------------------

NO ALLOWABLE WILL BE ASSIGNED TO THIS COMPLETION UNTIL ALL INTERESTS HAVE BEEN CONSOLIDATED  
OR A NON-STANDARD UNIT HAS BEEN APPROVED BY THE DIVISION



<sup>17</sup> OPERATOR CERTIFICATION

I hereby certify that the information contained herein is true and complete to the best of my knowledge and belief.

Signature: *Debra J. Anderson*

Printed Name: Debra J. Anderson

Title: Sr. Engineering Technician

Date: 8/23/00

<sup>18</sup> SURVEYOR CERTIFICATION

I hereby certify that the well location shown on this plat was plotted from field notes of actual surveys made by me or under my supervision, and that the same is true and correct to the best of my belief.

Date Surveyed

Signature and Seal of Professional Surveyor

Certificate Number