

NO. OF COPIES RECEIVED	
DISTRIBUTION	
SANTA FE	
FILE	
U.S.G.S.	
LAND OFFICE	
OPERATOR	

NEW MEXICO OIL CONSERVATION COMMISSION

SEP 3 10 42 AM '65

Form C-101  
Revised 1-1-65

5A. Indicate Type of Lease	
STATE <input checked="" type="checkbox"/>	FEE <input type="checkbox"/>
5. State Oil & Gas Lease No.	
<b>B-1732</b>	

APPLICATION FOR PERMIT TO DRILL, DEEPEN, OR PLUG BACK

1a. Type of Work		7. Unit Agreement Name	
b. Type of Well OIL WELL <input checked="" type="checkbox"/> GAS WELL <input type="checkbox"/> OTHER <input type="checkbox"/>		8. Farm or Lease Name <b>Gulf State B</b>	
2. Name of Operator <b>Western Oil Fields, Inc.</b>		9. Well No. <b>1</b>	
3. Address of Operator <b>P. O. Box 1137, Hobbs, New Mexico</b>		10. Field and Pool, or Wildcat <b>Blinebry (Oil)</b>	
4. Location of Well UNIT LETTER <b>F</b> LOCATED <b>2310</b> FEET FROM THE <b>West</b> LINE AND <b>1980</b> FEET FROM THE <b>North</b> LINE OF SEC. <b>36</b> TWP. <b>22-S</b> RGE. <b>37-E</b> NMPM		12. County <b>Lea</b>	
19. Proposed Depth <b>6250</b>		19A. Formation <b>Blinebry</b>	
20. Rotary or C.T. <b>Rotary</b>		21. Elevations (Show whether DF, RT, etc.) <b>3304.4 G.L.</b>	
21A. Kind & Status Plug. Bond <b>Blanket</b>		21B. Drilling Contractor <b>Cactus Drllg. Co.</b>	
22. Approx. Date Work will start <b>Sept. 10, 1965</b>			

23.

PROPOSED CASING AND CEMENT PROGRAM

SIZE OF HOLE	SIZE OF CASING	WEIGHT PER FOOT	SETTING DEPTH	SACKS OF CEMENT	EST. TOP
11"	8 5/8"	24.0#	1250	500	Circulate
7 7/8"	5 1/2"	17.0#	6250	900	2300'

Western Oil Fields, Inc. intends to drill a 11" hole to approx. depth of 1250 feet or into the top of the salt. We will run 8 5/8" casing and cement with 500 sx. We will drill a 7 7/8" hole to 6250' and cement 5 1/2" casing with 900 sx. of cement. The cement on 8 5/8" will circulate. The cement on the 5 1/2" casing will come at least to base of salt. Adequate blow out prevention will be maintained at all times during drilling and completion of well. Surface casing will be pressure tested before and after drilling out cement.

IN ABOVE SPACE DESCRIBE PROPOSED PROGRAM: IF PROPOSAL IS TO DEEPEN OR PLUG BACK, GIVE DATA ON PRESENT PRODUCTIVE ZONE AND PROPOSED NEW PRODUCTIVE ZONE. GIVE BLOWOUT PREVENTER PROGRAM, IF ANY.

I hereby certify that the information above is true and complete to the best of my knowledge and belief.

Signed Pam White Title Division Engineer Date Sept. 3, 1965

(This space for State Use)

APPROVED BY [Signature] TITLE  DATE

CONDITIONS OF APPROVAL, IF ANY:

**NEW MEXICO OIL CONSERVATION COMMISSION  
WELL LOCATION AND ACREAGE DEDICATION PLAT**

Form C-102  
Supersedes C-128  
Effective 1-1-65

All distances must be from the outer boundaries of the Section.

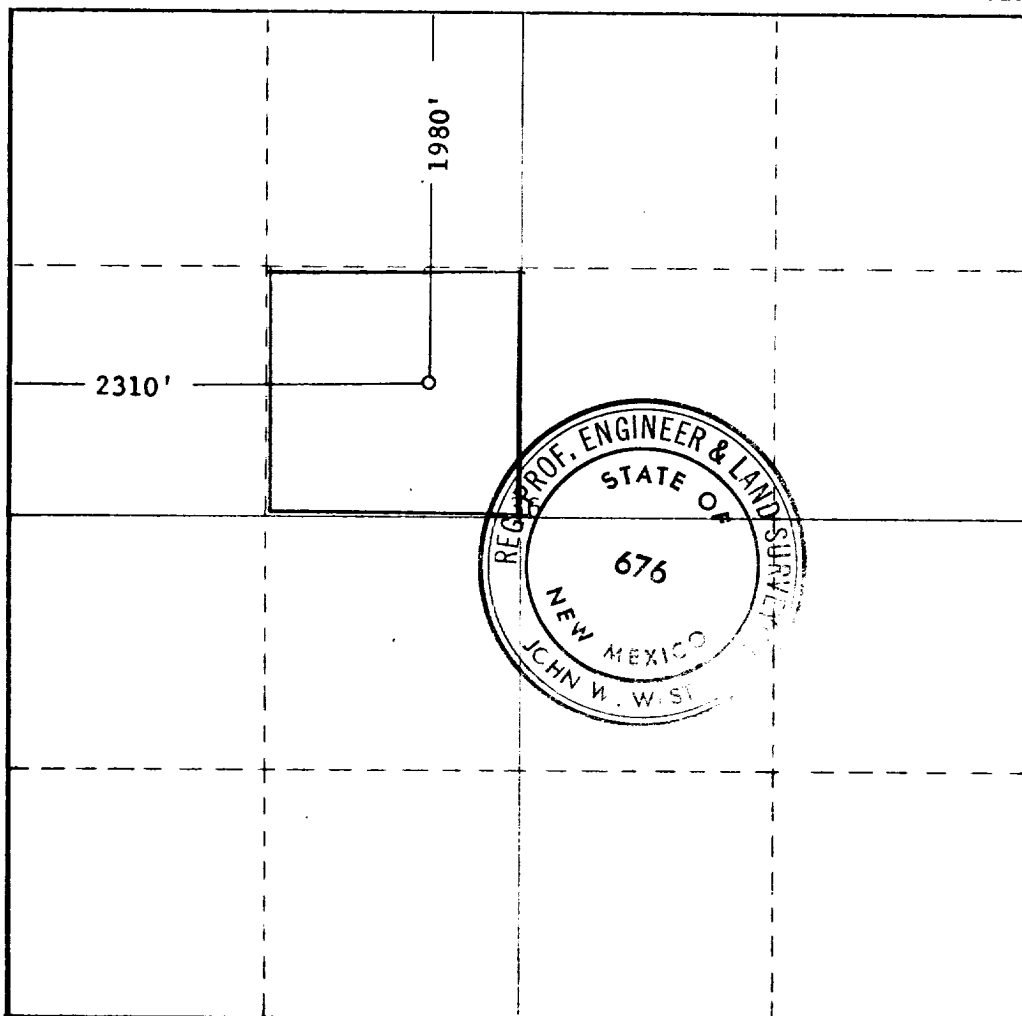
Operator <b>WESTERN OIL FIELDS, INC.</b>		Lease <b>GULF STATE B</b>		Well No. <b>1</b>
Unit Letter <b>F</b>	Section <b>36</b>	Township <b>22 SOUTH</b>	Range <b>37 EAST</b>	County <b>LEA</b>
Actual Footage Location of Well: <b>1980</b> feet from the <b>NORTH</b> line and <b>2310</b> feet from the <b>WEST</b> line.				
Ground Level Elev. <b>3303 1/4</b>	Producing Formation <b>Blinebry</b>	Pool <b>Blinebry (Oil)</b>	Dedicated Acreage <b>40</b>	

1. Outline the acreage dedicated to the subject well by colored pencil or hachure marks on the plat below.
2. If more than one lease is dedicated to the well, outline each and identify the ownership thereof (both as to working interest and royalty).
3. If more than one lease of different ownership is dedicated to the well, have the interests of all owners been consolidated by communitization, unitization, force-pooling, etc?

☐ Yes    ☐ No    If answer is "yes," type of consolidation \_\_\_\_\_

If answer is "no," list the owners and tract descriptions which have actually been consolidated. (Use reverse side of this form if necessary.) \_\_\_\_\_

No allowable will be assigned to the well until all interests have been consolidated (by communitization, unitization, forced-pooling, or otherwise) or until a non-standard unit, eliminating such interests, has been approved by the Commission.



**CERTIFICATION**

I hereby certify that the information contained herein is true and complete to the best of my knowledge and belief.

*Paul G. White*  
Name

**Paul G. White**

Position

**Division Engineer**

Company

**Western Oil Fields, Inc.**

Date

**SEPT. 1, 1965**

I hereby certify that the well location shown on this plat was plotted from field notes of actual surveys made by me or under my supervision, and that the same is true and correct to the best of my knowledge and belief.

Date Surveyed

**SEPT. 1, 1965**

Registered Professional Engineer and/or Land Surveyor

*John W. West*  
Certificate No.

**676**

0 330 660 990 1320 1650 1980 2310 2640 2000 1800 1000 500