

UNITED STATES
DEPARTMENT OF THE INTERIOR
GEOLOGICAL SURVEY

APPLICATION FOR PERMIT TO DRILL, DEEPEN, OR PLUG BACK

1a. TYPE OF WORK

DRILL ☒DEEPEN ☐PLUG BACK ☐

b. TYPE OF WELL

OIL

☒

GAS

☐

OTHER

SINGLE

☒

MULTIPLE

☐

2. NAME OF OPERATOR

3. ADDRESS OF OPERATOR

4. LOCATION OF WELL (Report location clearly and in accordance with any State requirements.)*

At surface

At proposed prod. zone

14. DISTANCE IN MILES AND DIRECTION FROM NEAREST TOWN OR POST OFFICE*

15. DISTANCE FROM PROPOSED*

LOCATION TO NEAREST

PROPERTY OR LEASE LINE, FT.

(also to nearest drlg. unit line, if any)

18. DISTANCE FROM PROPOSED LOCATION*

TO NEAREST WELL, DRILLING, COMPLETED,
OR APPLIED FOR, ON THIS LEASE, FT.

21. ELEVATIONS (Show whether DF, RT, GR, etc.)

23.

PROPOSED CASING AND CEMENTING PROGRAM

SIZE OF HOLE	SIZE OF CASING	WEIGHT PER FOOT	SETTING DEPTH	QUANTITY OF CEMENT
12 1/4"	9 7/8"	32.30 #	1300	525 SX. - Circ.
8 3/4"	7"	20 & 23 #	5300	300 SX.
6 1/4"	4 1/2" Linear	10.5 #	5200-6600'	175 SX.

IT IS PROPOSED TO DRILL A STRAIGHT HOLE TO A.T.D. OF 6600' & TEST THE CHERRY CANYON. IF PRODUCTION IS NOT ESTABLISHED, PLUG BACK & COMPLETE IN THE CRUZ DELAWARE.

MUD PROGRAM: 0-1300', FRESH WATER; 1300-5300', SALT GEL, 9.0-10.0 #; 5300-6600', FRESH WTR. GEL, 8.5-8.9 #. SEE ATTACHED FOR B.O.P. PROGRAM. SEE ATTACHED PROPOSED WELL PLAN FOR FORMATION TOPS, LOGGING, ETC.

SEE ATTACHED FOR
CONDITIONS OF APPROVAL

IN ABOVE SPACE DESCRIBE PROPOSED PROGRAM: If proposal is to deepen or plug back, give data on present production zone and proposed productive zone. If proposal is to drill or deepen directionally, give pertinent data on subsurface locations and measurements. Give blowout preventer program, if any.

24.

SIGNED

Wm. A. Butterfield

TITLE

ADMIN. SUPER.

DATE

7-27-76

(This space for Federal or State office use)

PERMIT TO DRILLING OPERATIONS HAVE
Commenced, this drilling approval
APPROVAL, IF
12-14-76

APPROVAL DATE

TITLE

APPROVED
AS AMENDED

SEP 14 1976

BERNARD MOROZ
ACTING DISTRICT ENGINEER

USGS

*See Instructions On Reverse Side

NEW MEXICO OIL CONSERVATION COMMISSION
WELL LOCATION AND ACREAGE DEDICATION PLAT

Form C-102
Supersedes C-128
Effective 1-4-65

All distances must be from the outer boundaries of the Section

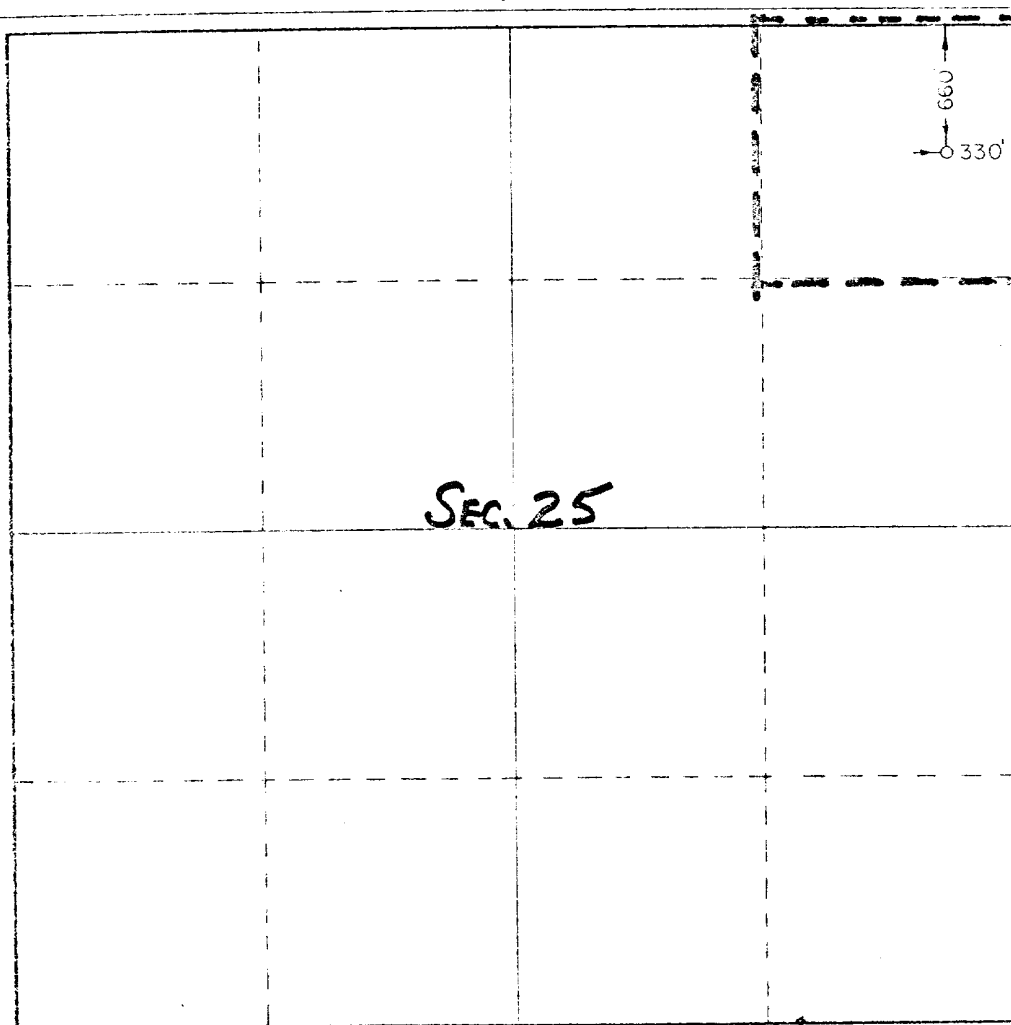
Operator Continental Oil Company		Lease Fields		Well No. 4
Quarter A	Section 25	Township 23 South	Range 32 East	County Lea
Actual distance from the corner of well: 660 feet from the North line and 330 feet from the East line				
Section 3712.3	Forming Formation CHERRY CANYON WILDCAT		Post 40	Acreage 40

1. Outline the acreage dedicated to the subject well by colored pencil or hatchure marks on the plat below.
2. If more than one lease is dedicated to the well, outline each and identify the ownership thereof (both as to working interest and royalty).
3. If more than one lease of different ownership is dedicated to the well, have the interests of all owners been consolidated by communitization, unitization, force-pooling, etc?

☐ Yes ☐ No If answer is "yes," type of consolidation _____

If answer is "no," list the owners and tract descriptions which have actually been consolidated. (Use reverse side of this form if necessary.) _____

No allowable will be assigned to the well until all interests have been consolidated (by communitization, unitization, forced-pooling, or otherwise) or until a non-standard unit, eliminating such interests, has been approved by the Commission.

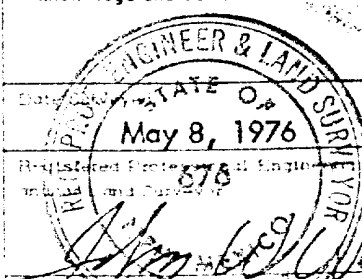


CERTIFICATION

I hereby certify that the information contained herein is true and complete to the best of my knowledge and belief.

Name **Wm. A. Butterfield**
Position **ADMIN. SUPERVISOR**
Company **CONTINENTAL OIL CO.**
Date **JULY 27, 1976**

I hereby certify that the well location shown on this plat was plotted from field notes of actual surveys made by me or under my supervision, and that the same is true and correct to the best of my knowledge and belief.



PROPOSED WELL PLAN

Fields No. 4

Lea County, New Mexico

Well Name 660 FN & 330 FEL

County & State

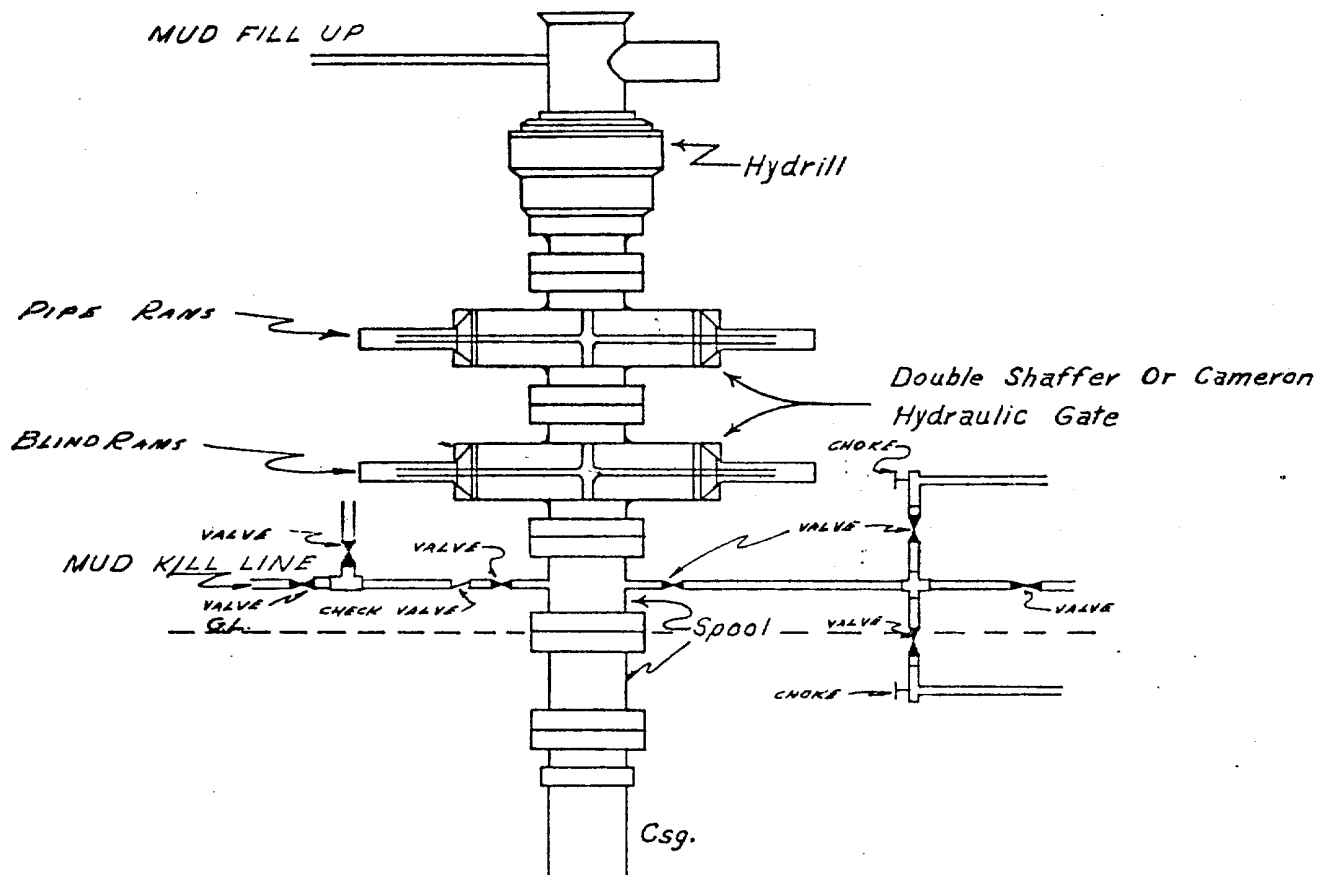
Location: Sec. 25-23S-32E

Elev: 3720 grd. est. 3731 DF. est

DEPTH	FORMATION TOPS & TYPE	DRILLING PROBLEMS	TYPE OF FORMATION EVALUATION	HOLE SIZE	CASING		FRACTURE GRADIENT	FORMATION PRESSURE GRADIENT	MUD	
					SIZE	DEPTH			WEIGHT	TYPE
1	Rustler 1230'			12 1/4"	9 5/8	1300			8.5-	Frsh
2	Salado 1370'								9.0	wtr.
3										
4			4700' - TD GR-BHC Sonic DIL and/or DIL							
5	Lamar 5070'		Dipmeter 5000-TD	8 3/4	7	5300	12.0-	Less	9.0-	Salt
6	Ramsey 5100'		2" & 5"				13.0	Than	10.0	Gel
	Cherry Canyon 6150'									
	TD 6600'			6 1/4	4 1/2"	6600	12.0-	8.2-	8.5-	Frsh
							13.0	8.7	9.0	wtr. gel
			* 4 1/2"							
			Liner 5200' - 6600'							

CONTINENTAL OIL COMPANY
Blow-out Preventer Specifications

FIELDS Well No. 4



NOTE:

Manual and Hydraulic controls with closing unit no less than 75' from well head.
Remote controls on rig floor.

**DUE TO SUBSTRUCTURE CLEARANCE,
HYDRILL MAY OR MAY NOT BE USED.**

SURFACE USE PLAN

Continental Oil Company, Fields No. 4
660' FNL and 330' FEL of Sec. 25, T-23S, R-32E
Lease LC063228, Lea County, N.M.

This plan is to accompany "Application for Permit to Drill" the subject well which is located approximately 25 miles on a direct line south-west of Eunice, New Mexico. The following is a discussion of pertinent information concerning possible effect which the proposed drilling of the well may have on the environment of the well and road sites and surrounding acreage. A copy will be posted on the derrick floor so that all contractors and sub-contractors will be aware of all items of this plan.

1. Existing Roads - Exhibit "A" is a portion of a New Mexico road map showing existing black top roads. Directions to the location (Outlined in red on map) from Eunice, New Mexico are as follows: from the blinking light at Conoco station in Eunice, go 2.5 miles south; turn west on Delaware Basin Road and go 26.1 miles; turn west on caliche road and travel west 6.2 miles; turn south and go 1 mile; turn west and go .1 mile passed second cattle guard - new road stakes will be south from this point to 1479'.
2. Planned Roads - See Exhibits "C" and "D".
3. Locations of Existing Wells - See Exhibit "D".
4. Tank Battery and Flowlines - The existing battery and lines are shown on exhibit "D".
5. Water Supply - Supply water will be hauled from water well in NW-SW Sec. 19 as shown on exhibit "D".
6. Source of Construction Materials - Caliche pit located SW-SW Section 18, T-26S, R-33E, and caliche to be hauled 1.1 mile south; west 1584' to location.
7. Waste Disposal - Well cuttings will be disposed in reserve pit. Barrel trash containers to be in accessible locations within drill site area during drilling and completion procedures. All detrimental waste will be hauled away, burned or buried with a minimum cover of 24" of dirt. See Exhibit "E" for location of pits. If well is productive, maintenance waste will be placed in special trash cans and hauled away periodically. Any produced water will be collected in tanks until hauled to an approved disposal system, or separate disposal applications will be submitted to the survey for appropriate approval.
8. Ancillary Facilities - None.
9. Proposed Well Mat and Immediate Area - Refer to Exhibit "E" for direction orientation.
 - a. Size of Drilling Pad - 200' x 175'

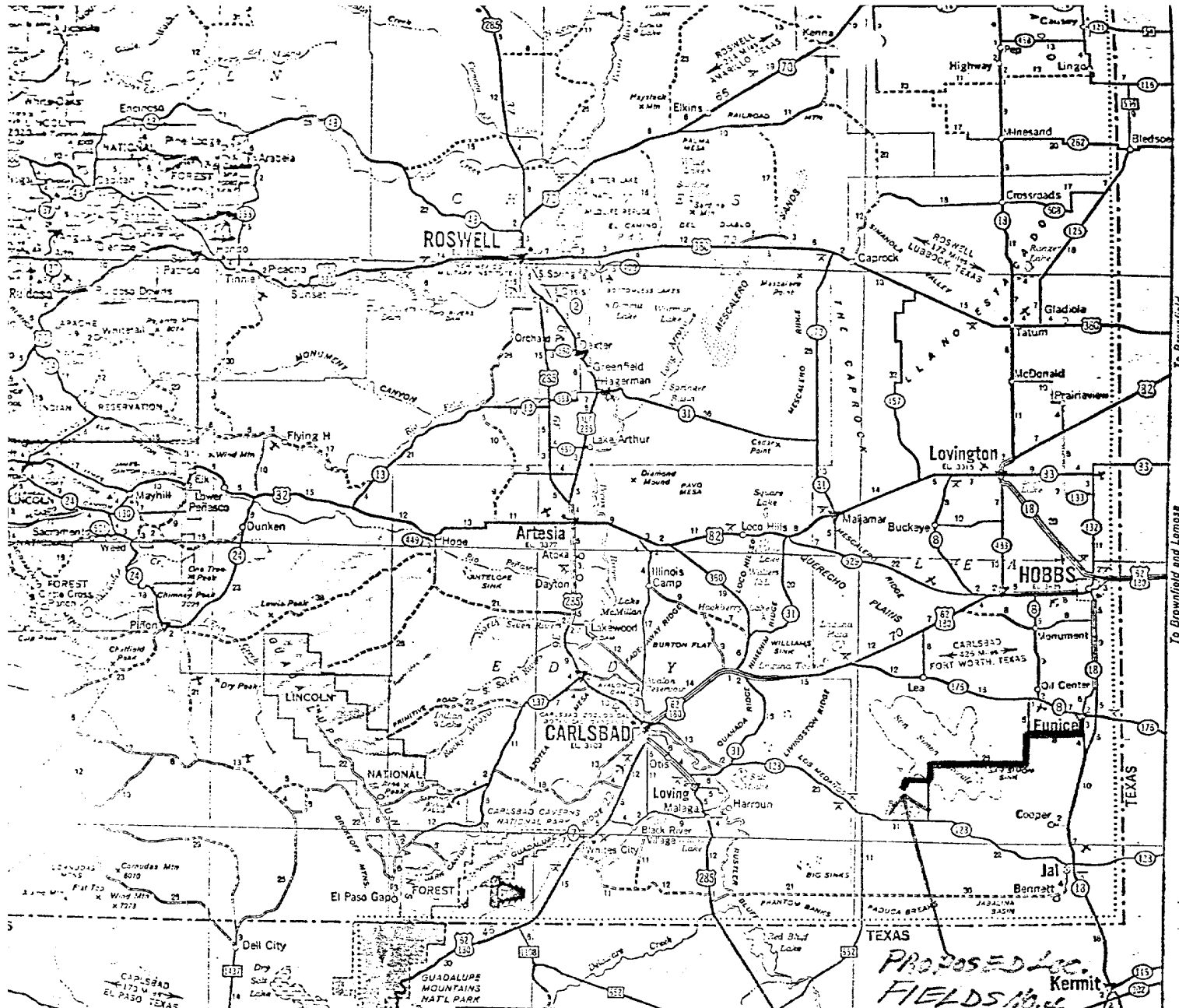
- b. Surfaced - Will be topped with 6" of caliche, bladed, watered and compacted. Caliche to be purchased from BLM by dirt contractor.
 - c. Reserve Pit - 100' x 100' lined with plastic and joining mat on north side.
 - d. Cut and Fill - Two feet of cut required running from north to south for approximately 80 yards.
 - e. Drill Site Layout - Exhibit "E" shows position of mat, reserve pits, burn pits, trash pits, and mud pits in relation to the well bore. Rig will be erected with the V-Door to the east.
10. Restoration of Surface - Pits will be backfilled and leveled as soon as practical to original condition. Commencement of rehabilitation operations will immediately follow removal of drilling and completion equipment from location and rehabilitation of the surface is planned to be completed within 45 days from commencement.
11. Other Information -
- a. Terrain - Low rolling sand hills. See Exhibit "C", topographic map of area.
 - b. Soil - Sandy
 - c. Vegetation - Mesquite; wild grass; bear grass; shinners
 - d. Surface Use - Grazing
 - e. Ponds and Steams - None within one mile.
 - f. Water Wells - None within one mile.
 - g. Residences and Buildings - None within one mile.
 - h. Arroyos, Canyons, Etc. - There are no significant surface features, see attached Exhibit "C".
 - i. Well Sign - Sign identifying and locating well will be maintained at drill site with the spudding of the well.
 - j. Open Pits - All pits containing mud or other liquids will be fenced.
 - k. Archaeological Resources - None observed.
12. Operator's Representative - Field personnel who can be contacted concerning compliance of this Surface Use Plan are as follows:

Production & Drilling
C. R. Paschal or D. A. Sowers
1001 North Turner
Hobbs, New Mexico 88240
Phone: 393 - 4141

13. Certification - I hereby certify that I, or persons under my direct supervision, have inspected the proposed drill site and access route; that I am familiar with the conditions which presently exist; that the statements made in this plan are, to the best of my knowledge, true and correct; and that the work associated with the operations proposed herein will be performed by Continental Oil Company and its contractors and sub-contractors in conformity with this plan and the terms and conditions under which it is approved.

8-11-76
Date

D. A. Sowers
D. A. Sowers
Production Superintendent



CONTINENTAL OIL CO.
FIELDS NO. 4
EXHIBIT "A"

LOCATIONS WHERE CONOCO PRODUCTS ARE SOLD

- ▼ Locations on Interstate Highways, toll roads or major limited access highways where CONOCO PRODUCTS are sold.
- ▼ Locations of CONOCO Travel Shoppes.
- ▼ Other CONOCO station locations.

Locations where CONOCO DEALERS provide Trailer Travelers with Sanitary Disposal Facilities. Look for this sign:

TOURIST ATTRACTIONS

- HISTORICAL
- SCENIC
- GENERAL

Attraction points described on reverse side

Highway	Distance	Highway	Distance
1	10	1	10
2	20	2	20
3	30	3	30
4	40	4	40
5	50	5	50
6	60	6	60
7	70	7	70
8	80	8	80
9	90	9	90
10	100	10	100
11	110	11	110
12	120	12	120
13	130	13	130
14	140	14	140
15	150	15	150
16	160	16	160
17	170	17	170
18	180	18	180
19	190	19	190
20	200	20	200
21	210	21	210
22	220	22	220
23	230	23	230
24	240	24	240
25	250	25	250
26	260	26	260
27	270	27	270
28	280	28	280
29	290	29	290
30	300	30	300
31	310	31	310
32	320	32	320
33	330	33	330
34	340	34	340
35	350	35	350
36	360	36	360
37	370	37	370
38	380	38	380
39	390	39	390
40	400	40	400
41	410	41	410
42	420	42	420
43	430	43	430
44	440	44	440
45	450	45	450
46	460	46	460
47	470	47	470
48	480	48	480
49	490	49	490
50	500	50	500
51	510	51	510
52	520	52	520
53	530	53	530
54	540	54	540
55	550	55	550
56	560	56	560
57	570	57	570
58	580	58	580
59	590	59	590
60	600	60	600
61	610	61	610
62	620	62	620
63	630	63	630
64	640	64	640
65	650	65	650
66	660	66	660
67	670	67	670
68	680	68	680
69	690	69	690
70	700	70	700
71	710	71	710
72	720	72	720
73	730	73	730
74	740	74	740
75	750	75	750
76	760	76	760
77	770	77	770
78	780	78	780
79	790	79	790
80	800	80	800
81	810	81	810
82	820	82	820
83	830	83	830
84	840	84	840
85	850	85	850
86	860	86	860
87	870	87	870
88	880	88	880
89	890	89	890
90	900	90	900
91	910	91	910
92	920	92	920
93	930	93	930
94	940	94	940
95	950	95	950
96	960	96	960
97	970	97	970
98	980	98	980
99	990	99	990
100	1000	100	1000

NEW MEXICO

SCALE OF MILES
 0 5 10 20 30 40
 ONE INCH EQUALS APPROXIMATELY 21.6 MILES

HIGHWAY MARKERS
 INTERSTATE UNITED STATES STATE TEXAS FARM OR RANCH

ROAD CLASSIFICATIONS
 CONTROLLED ACCESS DIVIDED HIGHWAYS
 Interstate interchanges are numbered as mileposts.

OTHER DIVIDED HIGHWAYS
 PRINCIPAL THROUGH HIGHWAYS
 OTHER THROUGH HIGHWAYS
 CONNECTING HIGHWAYS

Divided Undivided
 Interchanges
 Paved Gravel
 Paved Gravel

MILEAGES
 MILEAGE BETWEEN TOWNS AND JUNCTIONS
 MILEAGE BETWEEN DOTS

LONG DISTANCE MILEAGES SHOWN IN RED

SPECIAL FEATURES

STATE PARKS With Campsites Without Campsites	SCHEDULED AIRLINE STOPS
RECREATION AREAS With Campsites Without Campsites	MILITARY AIRPORTS
PORTS OF ENTRY Open 24 Hours Inquire Locally	OTHER AIRPORTS
POINTS OF INTEREST	TOURIST INFORMATION
	SKI AREAS
	SELECTED REST AREAS
	BOAT RAMPS
	TIME ZONE BOUNDARY

POPULATION SYMBOLS

State Capital	2,500 to 5,000	25,000 to 50,000
Under 1,000	5,000 to 10,000	50,000 to 100,000
1,000 to 2,500	10,000 to 25,000	100,000 and over

FIELD 5 No. 4

Deleware Road to Eureka

6 1/2 Miles

FIELD No. 4

BOOTLEG RIDGE

San Simon Nook

PAGE
SECTION

TRANS
WESTING

R-132E

T.22 S.

CONTINENTAL OIL CO.
FIELDS No. 4

T.23 S.

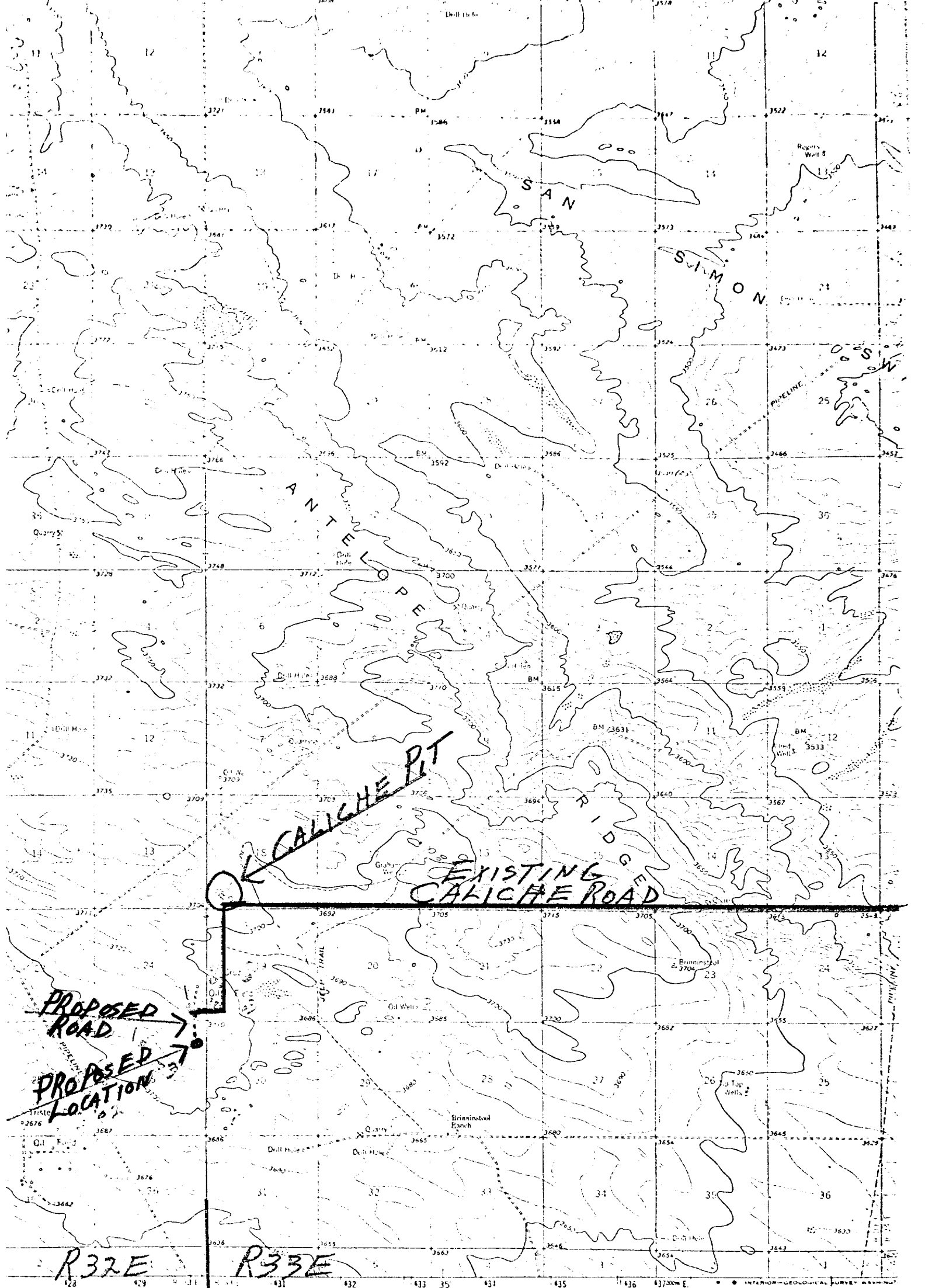
EXHIBIT "B"

24 S.

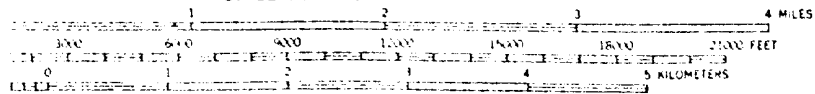
RECEIVED

JUL 23 1976

FIL CONSERVATION GROUP
DENVER, CO.



SCALE 1:62,500



CONTOUR INTERVAL 10 FEET
DATUM IS MEAN SEA LEVEL

CONTINENT OIL COMPANY
FIELD NO. 4



QUADRANGLE LOCATION

ROAD CLASSIFICATION
Medium-duty — — — — —
Unimproved — — — — —
State Route — — — — —

THIS MAP COMPLEIES WITH NATIONAL MAP ACCURACY STANDARDS
TOPOGRAPHICAL SURVEY, DENVER 25, COLORADO OR WASHINGTON 25, D.C.
FOR MORE TOPOGRAPHIC MAPS AND SYMBOLS IS AVAILABLE ON REQUEST

EXHIBIT "C"

HAT 1
N3

AMS

Continental
116808
3-31-63

Cor
116808
3-31-63

O.E. Bradley
3-31-63

Cont'l
116806
HBP

C.B. Read
4-30-63

Skelly
5-16-71

14

13

18

Wehrli
US

Wehrli

US

Fields

Helbing & Podpachan
Shell-State "A"
No. 1

State *To Eunice* →

Continental
116808
3-31-63

O.E. Bradley
2-28-63

Continental
116795
2-28-63

116806
HBP

Continental
HBP 116785

23

J. Galloway

Continental
116808
3-31-63

24

CRUZ DELAWARE

19

Wehrli
US

Wehrli

Fields

Marshall
US

T
23
S

Paulina Trigg
HBP

116808
3-31-63

116806 HBP

Continental
116785
HBP

26

Continental
HBP 116806

P-M Drlg. & Texaco
HBP

James

Trigg
HBP

4-26 3-26
"WL" Fed

25

PROPOSED
FIELDS #4
(Dry)

DISPOSAL LINE

DISPOSAL WALL

30

N

Marshall
US

P-M Drlg. & Texaco
HBP

P-M Drlg. & Texaco
HBP

Penroc & Baxter
No. 1

Gulf
4-20-64

Ohio
7-20-64

Hanagan
7-18-71

Gulf
2-16-64

Kirklin No. 1
State

TRISTE
DRAW
DELAWARE

James

Paulina Trigg
HBP 2-35

Faskin
No. 1 Gulf-State

Ohio
7-20-64

35

"WL" Fed.

P-M Drlg. & Texaco
HBP

Ohio
HBP

36

James

Trigg
HBP

Gulf
4-20-64

P-M Drlg. & Texaco
HBP

31

Gulf
4-20-64

Payne

US

R 32 E

State

R 33 E

State

CONTINENTAL OIL CO.
FIELDS NO. 4

EXHIBIT "D"

CONTINENTAL OIL COMPANY
PRODUCTION DEPARTMENT
HOBBS DISTRICT
CRUZ-TRISTE DRAW AREA
LEA COUNTY, NEW MEXICO

SCALE
0 1000 2000

CONTINENTAL OIL CO. - FIELD No. 2

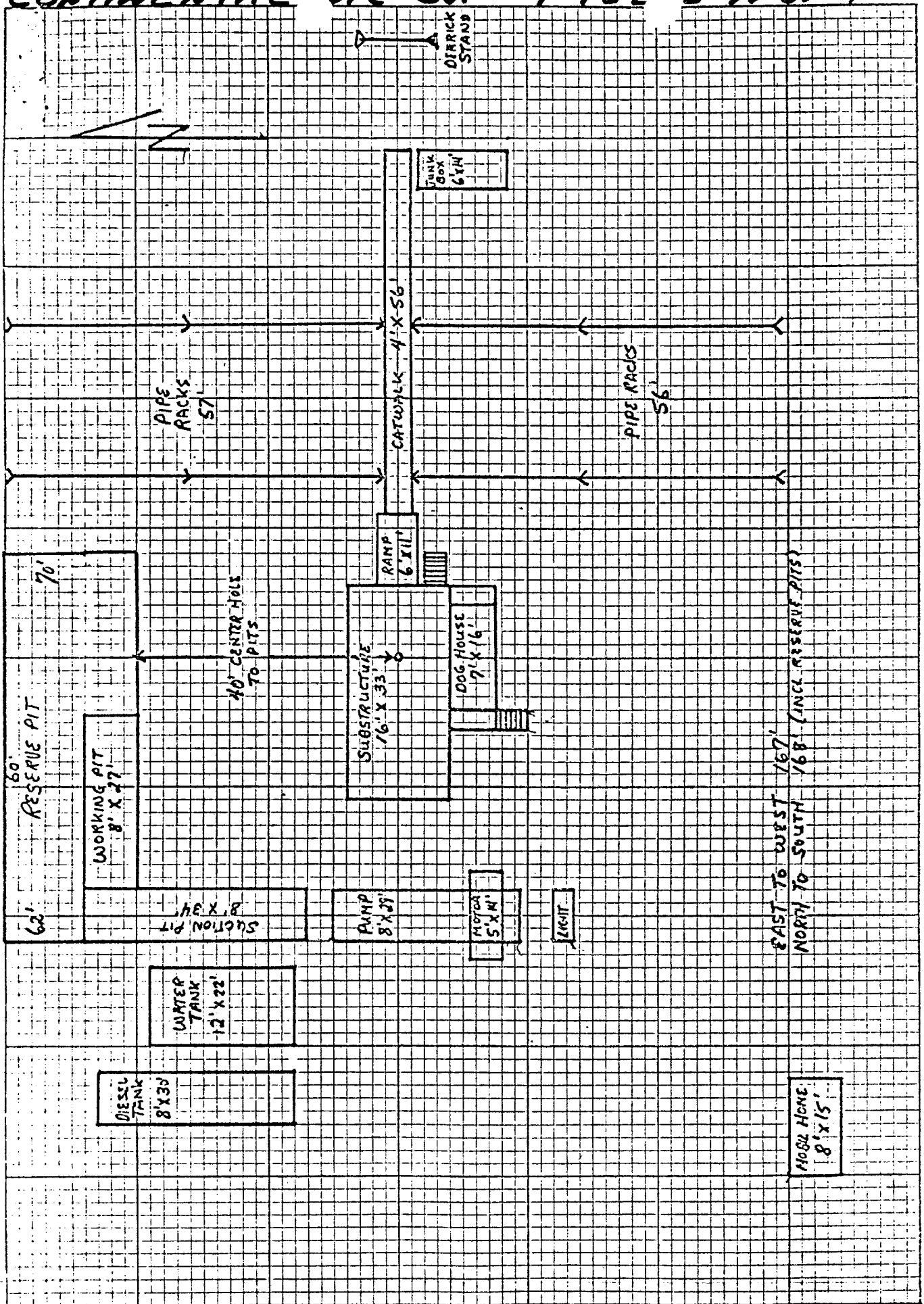


EXHIBIT "E"

U. S. GEOLOGICAL SURVEY
P. O. Box 1157
Hobbs, New Mexico 88240

HOBBS DISTRICT

Continental Oil Co.
No. 4 Fields
NE $\frac{1}{4}$ NE $\frac{1}{4}$ sec. 25-23S-32E
Lea County, N. M.

Above Data Required on Well Sign

CONDITIONS OF APPROVAL

1. Drilling operations authorized are subject to the attached sheet for general requirements for drilling and producing operations.
2. Notify this office (telephone (505) 393-3612) when the well is spudded and in sufficient time for a representative to witness cementing operations.
3. Immediate notice is required of all blowouts, fires, spills, and accidents involving life-threatening injuries or loss of life.
4. Secure prior approval before changing the approved drilling program or commencing plugging operations, plug-back work, casing repair work, or corrective cementing operations.
5. Blowout prevention equipment is to be installed, tested, and in working order before drilling below the surface casing and shall be maintained ready for use until drilling operations are completed.
6. A kill-line is to be properly installed and is not to be used as a fill-up line.
7. Blowout preventers are to have proper casing rams when running casing.
8. Drill string safety valve(s) to fit all pipe in the drill string to be maintained on the rig floor while drilling operations are in progress.
9. Blowout prevention drills are to be conducted as necessary to assure that equipment is operational and that each crew is properly trained to carry out emergency duties. All BOP tests and drills are to be recorded on the driller's log.
10. If the well is to be plugged back, secure prior approval of plugs to be placed.
11. If, during operations, the operator or any person working in his behalf, discover any historic or prehistoric ruin, monument or site, or any object of antiquity subject to the Antiquities Act of June 8, 1906, (34 Stat. 225, 16 U.S.C. Secs. 431-433), and 43 CFR Part 3, then work will be suspended and the discovery promptly reported to the District Manager. The Bureau will then take such action as required under the Act and regulations thereunder. When directed by the District Manager, the operator will obtain, at his expense, a qualified archeologist to examine and, if necessary, excavate or gather such ruins or objects.

RECEIVED

JUL 21 1976

FAL CONSERVATION COMM.
PO BOX 1000

12. All access roads constructed in conjunction with the drilling permit should be limited to 12 feet in width, along with turnouts. If well is a producer, all roads will be adequately drained to control runoff and soil erosion. Drainage facilities may include ditches, water bars, culverts and/or any other measure deemed necessary by the responsible BLM representative.
13. Materials removed during construction must be disposed of in such a manner that it does not detract from the aesthetics and does not accelerate erosion. When clearing the area of operations of vegetation other than grass, the vegetation removed will be placed in drainages, washes, gullies, etc., and "walked down" by crawler type tractor. If no drainages are in the immediate area, the vegetation will be "walked down" in place. After construction has been completed, the affected area will be left in as aesthetically pleasing condition as possible. All trash resultant from construction activities will be disposed of. Any large rocks left as a result of construction activities will not be piled or left in rolls but will be left so they do not detract from the scenic attributes of the area and will not hinder the movement of livestock or big game animals.
14. Any "available topsoil" encountered during the construction of the drill site area will be stockpiled and made available for re-surfacing of the reserve pit area (after pits are covered) after completion of the drilling operation.
15. The "mud pits" shall be well constructed and under no circumstances will they be allowed to leak or be cut to drain. They shall not be located on natural drainages. Waste or discharge of any kind will not be allowed to enter any drainage. Any plastic material used to line pits and/or sumps shall be cut-off below ground level, as far down as possible, and disposed of before the pits are covered. All unattended pits, containing liquids, will be fenced and the liquid portion allowed to evaporate before the pits are broken.
16. All pits found to contain toxic liquids will be fenced and covered with a fine-mesh netting for the protection of wildlife as directed by the responsible BLM representative.

RECEIVED

FEB 21 1976

OIL CONSERVATION COM. INC.
HOERS, R. M.

17. All waste associated with the drilling operation will be buried in place (in a separate trash pit) or removed and deposited in an approved sanitary landfill. All garbage (metal containers will be crushed) and debris left on site will be buried at least three feet deep. All trash and debris will be buried or removed from the site within one month after removal of the drill rig. The permittee will comply with all state laws and regulations pertaining to the disposal of human waste.
18. The well "site", if a producer, will be maintained and kept clean of all trash and litter or other foreign material which detracts from the surrounding environment. Maintenance shall also include measures necessary to stabilize soil conditions (other than reseeding) on the road and pad area, and maintenance of facilities associated with said well, to the satisfaction of the District Manager for the lifetime of the well.
19. In the event the oil or gas test results in a dry hole, the drill pad and access road will be ripped in accordance with "BLM Roswell Districts' Ripping Recommendations for Caliche or Compacted Drill Pads and Access Roads" (3109). (Reseeding of the affected areas may be required at the discretion of the District Manager).

RECEIVED

SEP 21 1976

OIL CONSERVATION COMM.
HOBBS, N. M.

177