

## DISTRICT I

P.O. Box 1980, Hobbs, NM 88241-1980

## DISTRICT II

P.O. Box Drawer DD, Artesia, NM 88211-0719

## DISTRICT III

1000 Rio Brazos Rd., Aztec, NM 87410

## DISTRICT IV

P.O. Box 2088, Santa Fe, NM 87504-2088

State of New Mexico

Energy, Minerals and Natural Resources Department

Form C-101

Revised February 10, 1999

Instructions on back

Submit to Appropriate District Office

State Lease - 6 Copie

Fee Lease - 5 Copie

☐ AMENDED REPORT

## OIL CONSERVATION DIVISION

P.O. Box 2088

Santa Fe, New Mexico 87504-2088

## APPLICATION FOR PERMIT TO DRILL, RE-ENTER, DEEPEN, PLUGBACK, OR ADD A ZONE

<sup>1</sup> Operator Name and Address TEXACO EXPLORATION & PRODUCTION INC. 205 E. Bender, HOBBS, NM 88240		<sup>2</sup> OGRID Number 022351
<sup>4</sup> Property Code 11060		<sup>3</sup> API Number 30 025 32160
<sup>5</sup> Property Name SIMS, R. R. "A"		<sup>6</sup> Well No. 3

<sup>7</sup> Surface Location

Ul or lot no	Section	Township	Range	Lot.Idn	Feet From The	North/South Line	Feet From The	East/West Line	County
N	4	23-SO	37-EA		380	SOUTH	2175	WEST	LEA

<sup>8</sup> Proposed Bottom Hole Location If Different From Surface

Ul or lot no	Section	Township	Range	Lot.Idn	Feet From The	North/South Line	Feet From The	East/West Line	County
<sup>9</sup> Proposed Pool 1 TEAGUE DRINKARD ABO NORTH					<sup>10</sup> Proposed Pool 2				

<sup>11</sup> Work Type Code P	<sup>12</sup> WellType Code O	<sup>13</sup> Rotary or C.T.	<sup>14</sup> Lease Type Code P	<sup>15</sup> Ground Level Elevation GR-3335', KB-3349'
<sup>16</sup> Multiple No	<sup>17</sup> Proposed Depth 8950'	<sup>18</sup> Formation DRINKARD-ABO	<sup>19</sup> Contractor	<sup>20</sup> Spud Date 5/1/01

<sup>21</sup> Proposed Casing and Cement Program

SIZE OF HOLE	SIZE OF CASING	WEIGHT PER FOOT	SETTING DEPTH	SACKS OF CEMENT	EST. TOP
14 3/4	11 3/4	42#	1180'	CL-C 750 SX,CIRC. 74	
11	8 5/8	32#	3750'	CL-H 1675 SX, TOC @	
				BY T.S.	
7 7/8	5 1/2	15.5 & 17#	8950'	CL-H 1900 SX,CIRC. 1	
				D.V. TOOL @ 6980'	

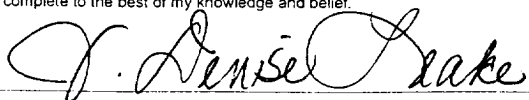
22 Describe the proposed program. If this application is to DEEPEN or PLUG BACK give the data on the present productive zone and proposed new productive zone. Describe the blowout prevention program, if any. Use additional sheets if necessary.

TEXACO INTENDS TO RECOMPLETE THE SUBJECT WELL IN THE TEAGUE DRINKARD ABO NORTH FIELD. PROCEDURE IS AS FOLLOWS:

- 1) MIRU. INSTL BOP. TIH W/BIT & CSG SCRAPER & TAG BTM. SET CIBP @ 8750' & DUMP 35' CMT. TIH W/PERF GUN & PERF ABO INTERVALS 6822-7046', & 6620-6768'. TIH W/PKR & SET @ 6580'.
- 2) ACIDIZE ABO W/5000 GALS 15% HCL. TIH W/FRAC TBG. FRAC STIM PERFS 6620-7046' W/15,000 GALS 65 QUAL C02 FOAMED 20% HCL.
- 3) TIH W/RBP & SET @ 6680'. TIH W/BAILER & DUMP 50# SAND ON TOP OF RBP. TIH W/PERF GUN & PERF DRINKARD INTERVALS 6386-6602'.
- 4) TIH W/PKR & SET @ 6340'. ACIDIZE DRINKARD W/3000 GALS 15% HCL.
- 5) TIH W/FRAC TBG. FRAC STIM PERFS 6386-6602 W/15,000 GALS 65 QUAL C02 FOAMED 20% HCL. TIH W/TBG & TAG FOR FILL. TIH W/RETR TOOL & PULL RBP.
- 6) TIH W/2 7/8" TBG W/SN & BTM HLE PLUNGER LIFT ASSEMBLY. SET SN @ 6700'. PLACE ON PRODUCTION.

23 I hereby certify that the rules and regulations of the Oil Conservation Division have been complied with and that the information given above is true and complete to the best of my knowledge and belief.

Signature



Printed Name J. Denise Leake

Title Engineering Assistant

Date 4/23/01

Telephone 897-0405

## OIL CONSERVATION DIVISION

Approved By:

Title:

Approval Date: APR 26 2001

Expiration Date:

Conditions of Approval:

Attached

Plugback

## DISTRICT I

P.O. Box 1980, Hobbs, NM 88241-1980

## DISTRICT II

P.O. Box Drawer DD, Artesia, NM 88211-0719

## DISTRICT III

1000 Rio Brazos Rd., Aztec, NM 87410

## DISTRICT IV

P.O. Box 2088, Santa Fe, NM 87504-2088

State of New Mexico

Energy, Minerals and Natural Resources Department

Form C-102

Revised February 10, 199

Instructions on back

Submit to Appropriate District Office

State Lease - 4 Copy

Fee Lease - 3 Copy

AMENDED REPORT

## OIL CONSERVATION DIVISION

P.O. Box 2088

Santa Fe, New Mexico 87504-2088

## WELL LOCATION AND ACREAGE DEDICATION PLAT

<sup>1</sup> API Number 30 025 32160	<sup>2</sup> Pool Code 96313	<sup>3</sup> Pool Name TEAGUE DRINKARD ABO NORTH
<sup>4</sup> Property Code 11060	<sup>5</sup> Property Name SIMS, R. R. "A"	<sup>6</sup> Well No. 3
<sup>7</sup> OGRID Number 022351	<sup>8</sup> Operator Name TEXACO EXPLORATION & PRODUCTION INC.	<sup>9</sup> Elevation GR-3335', KB-3349'

<sup>10</sup> Surface Location

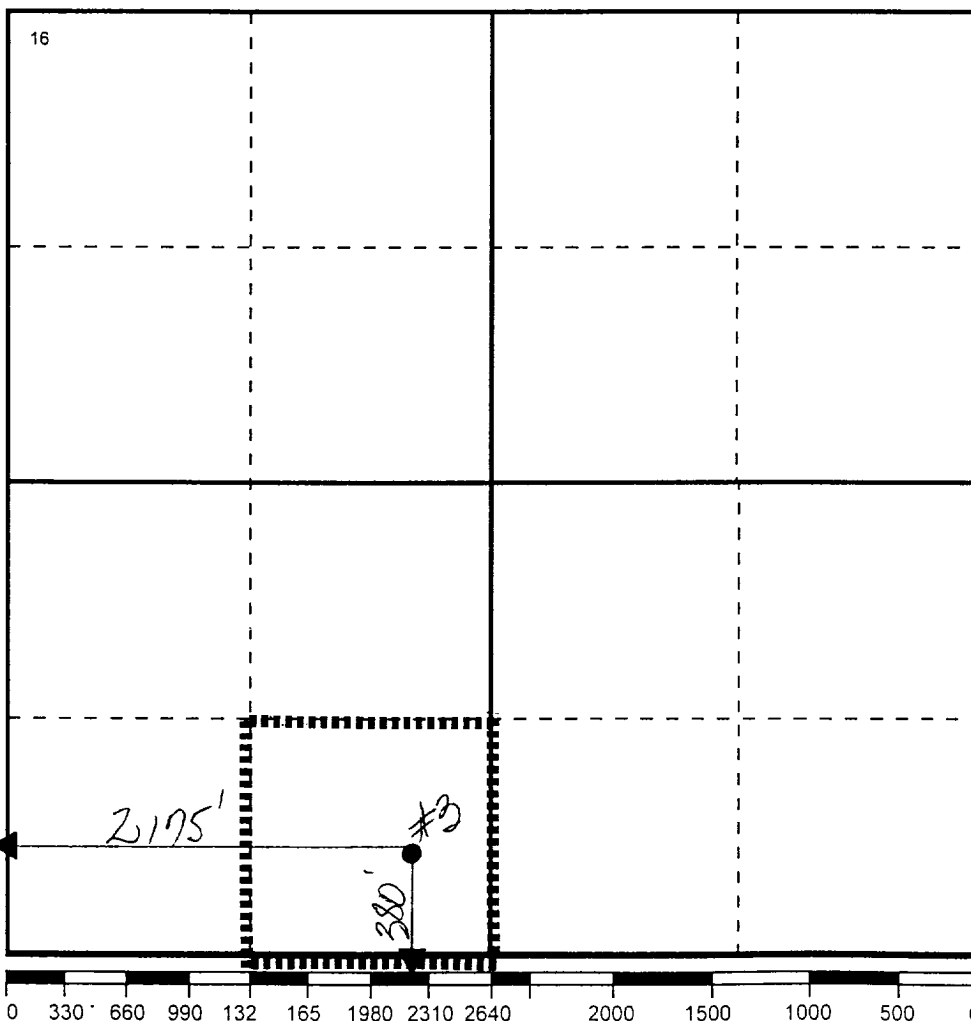
UI or lot no	Section	Township	Range	Lot.Idn	Feet From The	North/South Line	Feet From The	East/West Line	County
N	4	23-SO	37-EA		380	SOUTH	2175	WEST	LEA

<sup>11</sup> Bottom Hole Location If Different From Surface

UI or lot no	Section	Township	Range	Lot.Idn	Feet From The	North/South Line	Feet From The	East/West Line	County
--------------	---------	----------	-------	---------	---------------	------------------	---------------	----------------	--------

<sup>12</sup> Dedicated Acre 40	<sup>13</sup> Joint or Infill No	<sup>14</sup> Consolidation Code	<sup>15</sup> Order No.
------------------------------------	-------------------------------------	----------------------------------	-------------------------

NO ALLOWABLE WILL BE ASSIGNED TO THIS COMPLETION UNTIL ALL INTERESTS HAVE BEEN CONSOLIDATED  
OR A NON-STANDARD UNIT HAS BEEN APPROVED BY THE DIVISION

<sup>17</sup> OPERATOR CERTIFICATION

I hereby certify that the information contained herein is true and complete to the best of my knowledge and belief

Signature

*J. Denise Leake*  
Printed Name

J. Denise Leake

Position

Engineering Assistant

Date

4/23/01

<sup>18</sup> SURVEYOR CERTIFICATION

I hereby certify that the well location shown on this plat was plotted from field notes of actual surveys made by me or under my supervision, and that the same is true and correct to the best of my knowledge and belief.

Date Surveyed

Signature &amp; Seal of

Professional Surveyor

Certificate No.