

UNITED STATES  
DEPARTMENT OF THE INTERIOR  
GEOLOGICAL SURVEY

30-125-34151

APPLICATION FOR PERMIT TO DRILL, DEEPEN, OR PLUG BACK

1a. TYPE OF WORK  
 DRILL                       DEEPEN                       PLUG BACK

b. TYPE OF WELL  
 OIL WELL                       GAS WELL                       OTHER   
 SINGLE ZONE                       MULTIPLE ZONE

2. NAME OF OPERATOR  
 Terra Resources, Inc.

3. ADDRESS OF OPERATOR  
 1638 Bank of the Southwest Bldg., Houston, Texas 77002

4. LOCATION OF WELL (Report location clearly and in accordance with any State requirements.\*)  
 At surface 990' fr. N. & 990' fr. E. Line NW $\frac{1}{4}$  of NE $\frac{1}{4}$ , Sec. 13  
 At proposed prod. zone

14. DISTANCE IN MILES AND DIRECTION FROM NEAREST TOWN OR POST OFFICE\*  
 5 miles East of Jal.

15. DISTANCE FROM PROPOSED\* LOCATION TO NEAREST PROPERTY OR LEASE LINE, FT. (Also to nearest drlg. unit line, if any)  
 990' fr. Ls. Line  
 330' fr. Unit Line

16. NO. OF ACRES IN LEASE  
 160

17. NO. OF ACRES ASSIGNED TO THIS WELL  
 40

18. DISTANCE FROM PROPOSED LOCATION\* TO NEAREST WELL, DRILLING, COMPLETED, OR APPLIED FOR, ON THIS LEASE, FT.  
 330'

19. PROPOSED DEPTH  
 6300'

20. ROTARY OR CABLE TOOLS  
 Rotary

21. ELEVATIONS (Show whether DF, RT, GR, etc.)  
 3095 GR

22. APPROX. DATE WORK WILL START\*  
 May 10, 1974

23. PROPOSED CASING AND CEMENTING PROGRAM

SIZE OF HOLE	SIZE OF CASING	WEIGHT PER FOOT	SETTING DEPTH	QUANTITY OF CEMENT
12 1/4	8 5/8	24	975	550 sx <b>CIRCULATE</b>
7 7/8	5 1/2	14# & 15.5#	6000	400 sx. <b>SUFFICIENT To Fill to BASE SPLIT</b>

We propose to drill a well using rotary tools to approximately 600' to produce the Tubb-Drinkard Formation. 10" Series 900 hydraulic type BOP and Hydril type BOP will be utilized.

TRASH AND JUNK SHOULD BE BURIED IN A SEPARATE TRASH PIT

IN ABOVE SPACE DESCRIBE PROPOSED PROGRAM: If proposal is to deepen or plug back, give data on present productive zone and proposed new productive zone. If proposal is to drill or deepen directionally, give pertinent data on subsurface locations and measured and true vertical depths. Give blowout preventer program, if any.

SIGNED W.A. Middleton TITLE District Engineer DATE 4-15-74

(This space for Federal or State office use)

PERMIT NO. \_\_\_\_\_

APPROVED BY \_\_\_\_\_ TITLE \_\_\_\_\_  
 CONDITIONS OF APPROVAL, IF ANY:

APPROVED AS AMENDED  
 MAY 10 1974  
 ARTHUR R. BROWNE  
 DISTRICT ENGINEER

\*See Instructions On Reverse Side

NEW MEXICO OIL CONSERVATION COMMISSION  
WELL LOCATION AND ACREAGE DEDICATION PLAT

Form C-102  
Supersedes C-128  
Effective 1-1-65

All distances must be from the outer boundaries of the Section.

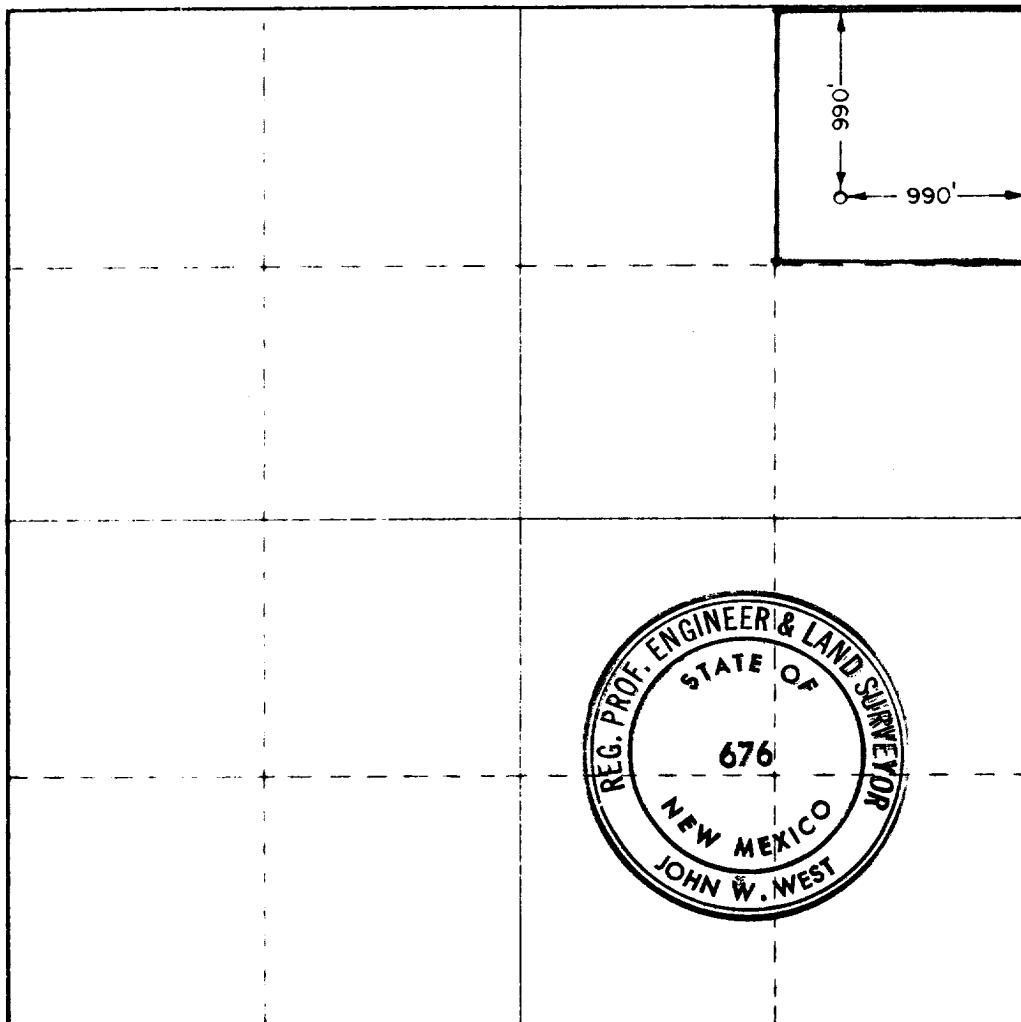
Operator <b>TERRA RESOURCES, INC.</b>			Lease <b>CARLSON B-13</b>		Well No. <b>8</b>
Grid Letter <b>A</b>	Section <b>13</b>	Township <b>25 SOUTH</b>	Range <b>37 EAST</b>	County <b>LEA</b>	
Actual Point for Location of Well: <b>990</b> feet from the <b>NORTH</b> line and <b>990</b> feet from the <b>EAST</b> line					
Ground Level Elev. <b>3095.3</b>	Producing Formation <b>Tubb Drinkard</b>		Pool <b>Justis Tubb Drinkard</b>		Dedicated Acreage: <b>40</b> Acres

1. Outline the acreage dedicated to the subject well by colored pencil or hachure marks on the plat below.
2. If more than one lease is dedicated to the well, outline each and identify the ownership thereof (both as to working interest and royalty)
3. If more than one lease of different ownership is dedicated to the well, have the interests of all owners been consolidated by communitization, unitization, force-pooling, etc?

Yes  No If answer is "yes," type of consolidation \_\_\_\_\_

If answer is "no," list the owners and tract descriptions which have actually been consolidated. (Use reverse side of this form if necessary.) \_\_\_\_\_

No allowable will be assigned to the well until all interests have been consolidated (by communitization, unitization, forced-pooling, or otherwise) or until a non-standard unit, eliminating such interests, has been approved by the Commission.



CERTIFICATION

I hereby certify that the information contained herein is true and complete to the best of my knowledge and belief.

*W. A. Middleton*

Name **W. A. Middleton**  
District Engineer

Position  
**Terra Resources, Inc.**

Company  
**4-15-74**

Date

I hereby certify that the well location shown on this plat was plotted from field notes of actual surveys made by me or under my supervision, and that the same is true and correct to the best of my knowledge and belief.

Date Surveyed  
**APRIL 9, 1974**

Registered Professional Engineer and/or Land Surveyor

*John W. West*

Certificate No. **676**

