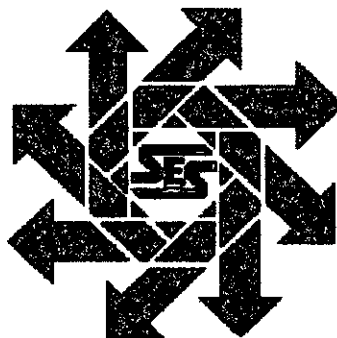


**REMEDIATION
&
CLEAN UP
WORK
PLAN**

**Vivian Battery
Remediation/Cleanup Work Plan
Section 30, T22S, R38E
Lea County, New Mexico**



RECEIVED

MAY 15 2000

ENVIRONMENTAL BUREAU
OIL CONSERVATION DIVISION

May 10, 2000

Prepared for:

**Chevron USA
P.O. Box 1949
Eunice, New Mexico 88231**

By

***Safety & Environmental Solutions, Inc.
703 E. Clinton Suite 103
Hobbs, New Mexico 88240
(505) 397-0510***

TABLE OF CONTENTS

Purpose.....	<u>1</u>
Background.....	<u>1</u>
Contaminant and Size of Leak	<u>1</u>
Vertical and Horizontal Extent of Contamination.....	<u>1</u>
Groundwater.....	<u>1</u>
Action Plan	<u>2</u>
Maps and Figures.....	<u>2</u>

I. Purpose

The purpose of this work plan is to propose a plan for the restoration of the historical hydrocarbon contamination at the Vivian Lease tank battery. The Subject site is located in Section 30, T22S, R38E in Lea County, New Mexico. Tom and Winnie Kennann own the land.

This plan will allow closure in a manner that will protect the population, environment and groundwater of the area surrounding the subject location. The battery site is situated on a relatively level site. (See Vicinity Map)

II. Background

The subject site contains hydrocarbon stained soils that have accumulated over the years. The soils are stained inside and outside the battery fence line and do not appear to be of recent origin.

In May 2000, Chevron USA engaged the services of Safety and Environmental Solutions, Inc. to complete all necessary sampling, testing and remediation of the soils at the leak site to approved New Mexico Oil Conservation Division guidelines.

III. Contaminant and Size of Leak

The contaminated area outside the fence is approximately 105' in length and 30' wide at the widest point. The stains run in a southerly direction from the south fence. The stained soils are from the battery and therefore, knowledge of process indicated that the material will be exempt oilfield waste. No evidence of other contaminants was observed.

IV. Vertical and Horizontal Extent of Contamination

The vertical and horizontal extent of the contamination will be determined by excavation at the time of cleanup. All samples will be collected with strict adherence to the SOPs found in **Environmental Protection Agency, 1984, Characterization of Hazardous Waste Site - A Methods Manual: Vol II**. These samples will be representative of the contamination levels and will be analyzed for Total Petroleum Hydrocarbons (TPH) content. The results will be compared to the contaminate levels specified in "**Guidelines for Remediation of Leaks, Spills and Releases**" *New Mexico Oil Conservation Division* - August 13, 1993.

V. Groundwater

According to the New Mexico State Engineer's office the nearest water well is located approximately 1500' northwest of the subject site in the SE/4 of the SW/4 of Section 19. The water level at that well is 101.02'.

VI. Action Plan

Site Characterization

Distance to Surface Water/Waterways	0 points
Distance to Well Head or Water Source	0 points
Depth to Ground Water	10 points

Applying the ranking criteria specified in "**Guidelines for Remediation of Leaks, Spills and Releases**" *New Mexico Oil Conservation Division* - August 13, 1993 to this site results in a cleanup level of 1000ppm TPH as approved by the New Mexico Oil Conservation Division.

Closure

The site outside the fence will be excavated both horizontally and vertically for the removal of contaminated soils. Field testing will be conducted to ensure the removal of said soils to below the stated NMOCD requirements for TPH levels. The contaminated material will be taken to Sundance Services for proper disposal. The excavation will be backfilled with clean soil purchased from the landowner. The bottom and side of the holes will be sampled at the final excavation depths. These samples will be tested for TPH with a third party laboratory for confirmation of the contamination levels present.

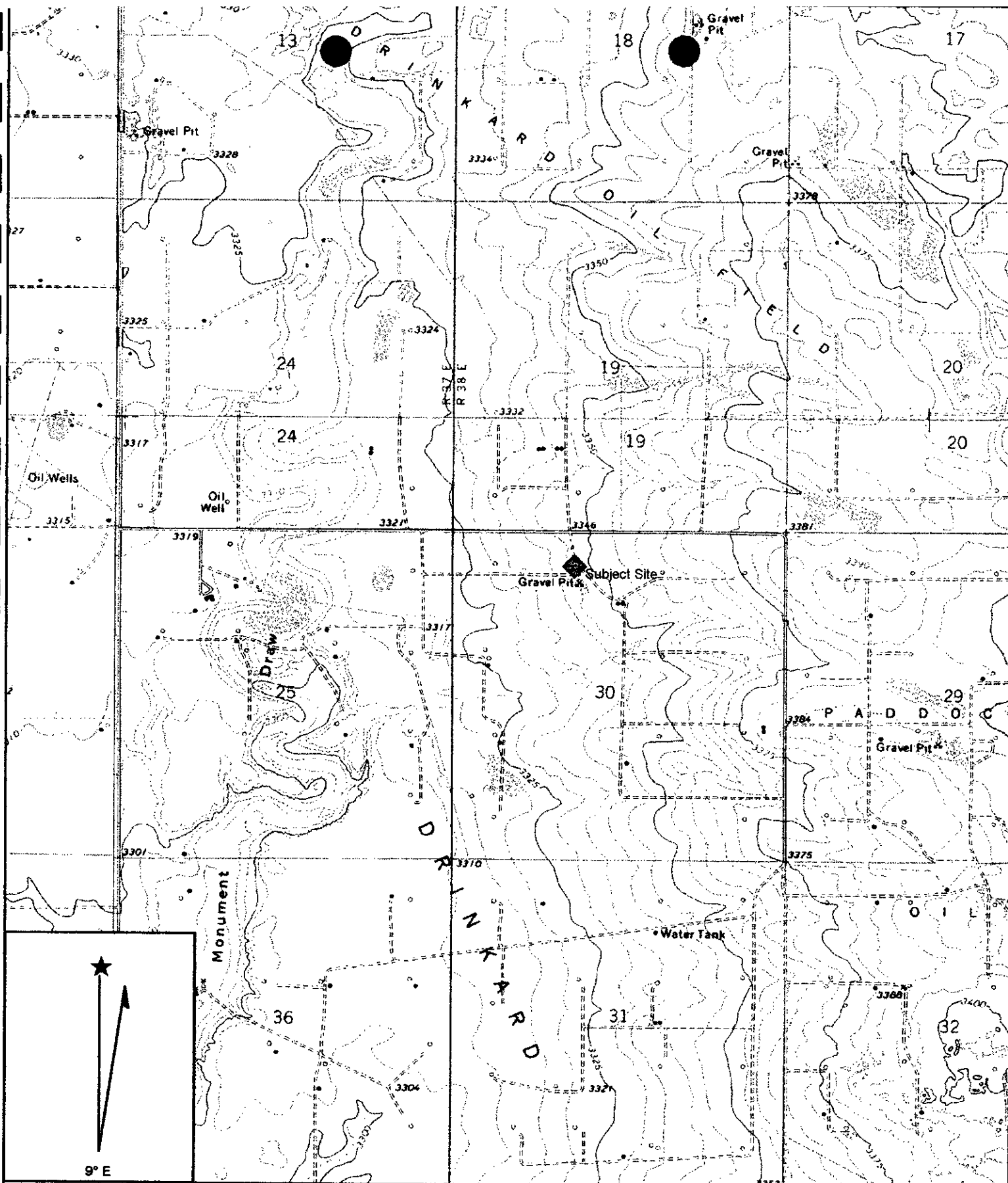
The Vivian Battery is still active and the stained soils inside the fence will be excavated only to a depth of approximately 12" to 18" and taken to Sundance Services for proper disposal. Clean soils purchased from the landowner will be used to backfill this excavation.

The appropriate reports will be filed with the NMOCD in the closure report.

VII. Maps and Figures

Vicinity Map
Site Plan

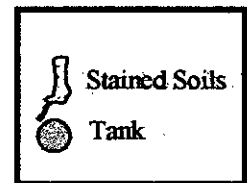
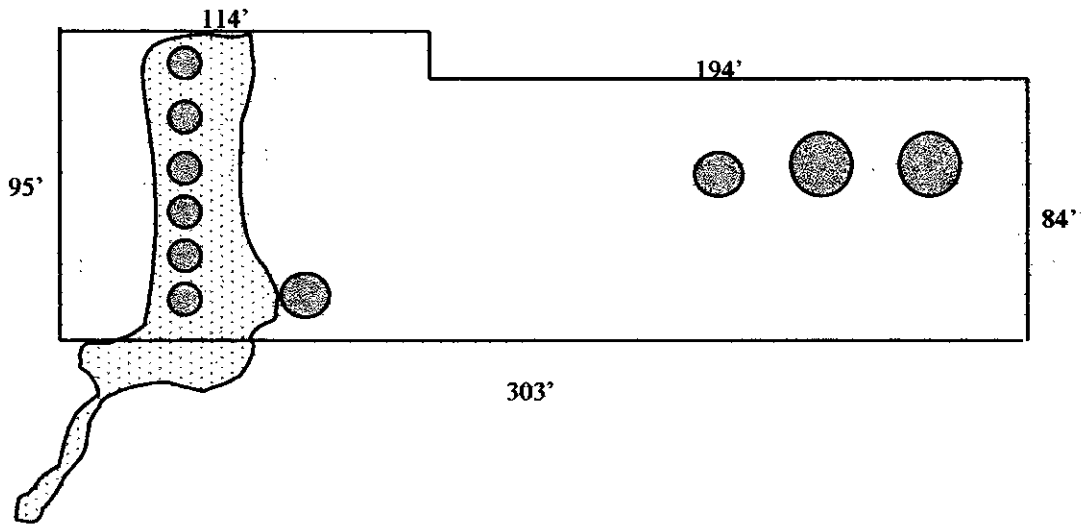
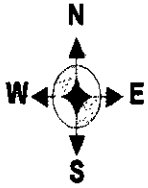
Figure 1
Vicinity Map



Name: EUNICE SE
 Date: 5/12/2000
 Scale: 1 inch equals 2000 feet

Location: 032° 22' 01.8" N 103° 06' 17.3" W
 Caption: Chevron USA
 Vivian Battery

Figure 2
Site Plan



Date 5-10-00
Scale 1" = 200'

Chevron USA

Vivian Battery
Sec 30, T22S, R38E
Lea Co., New Mexico

Safety & Environmental Solutions, Inc.

