

**PIT  
CLOSURE  
PLANS  
&  
REPORTS**



STATE OF NEW MEXICO  
ENERGY, MINERALS AND NATURAL RESOURCES DEPARTMENT

OIL CONSERVATION DIVISION  
2040 S. PACHECO  
SANTA FE, NEW MEXICO 87505  
(505) 827-7131

November 5, 1996

Mr. Michael E. McAllister  
Coastal Oil & Gas Corporation  
Coastal Tower  
Nine Greenway Plaza  
Houston, Texas 77046-0995

RE: PIT CLOSURE REPORTS  
SANTA FE #1  
SANTA FE #2  
ADLONG #5  
SAWYER FEDERAL #4

Dear Mr. McAllister:

The New Mexico Oil Conservation Division (OCD) has completed a review of Coastal Oil & Gas Corporation's (COGC) July 3, 1996 "PRODUCTION PIT COMPLETED CLOSURES, LEA COUNTY NEW MEXICO". These documents contain the results of COGC's closure of unlined production pits at the following COGC sites in Lea County, New Mexico:

- Santa Fe #1 & #2 located in Unit F, Sec. 33, T09S, R37E.
- Adlong #5 located in Unit A, Sec. 05, T10S, R37E.
- Sawyer Federal #4 located in Unit H, Sec. 04, T10S, R37E.

Based upon the information contained in the above documents and OCD's October 1, 1996 site inspections, the above referenced pit closure actions are approved with the following conditions:

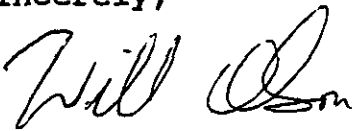
1. All future final pit closure reports will include a completed OCD "PIT REMEDIATION AND CLOSURE REPORT" form (enclosed) for each pit closed. The form will contain all relevant information and analytical results for determination of the vertical extent of contamination and final contaminant concentrations of onsite remediated materials.

Mr. Michael McAllister  
November 5, 1996  
Page 2

Please be advised that OCD approval does not relieve COGC of liability should remaining contaminants be found to pose a future threat to ground water, surface water, human health or the environment. In addition, OCD approval does not relieve COGC of responsibility for compliance with any other federal, state or local laws and/or regulations.

If you have any questions, please contact me at (505) 827-7154.

Sincerely,

A handwritten signature in cursive script, appearing to read "Will Olson".

William C. Olson  
Hydrogeologist  
Environmental Bureau

xc: Jerry Sexton, OCD Hobbs District Supervisor  
Wayne Price, OCD Hobbs District Office



STATE OF NEW MEXICO  
ENERGY, MINERALS AND NATURAL RESOURCES DEPARTMENT  
OIL CONSERVATION DIVISION  
HOBBS DISTRICT OFFICE

POST OFFICE BOX 1980  
HOBBS, NEW MEXICO 88241-1980  
(505) 393-6151

NMOCD INTER-OFFICE CORRESPONDENCE

TO: Bill Olson-NMOCD Hydrogeologist-Environmental Bureau  
From: Wayne Price-Environmental Engineer *Wayne Price*  
Date: October 22, 1996

Reference: Coastal Oil & Gas Pit Closures.

Subject: Pictures & Comments for Ten Pits.

Comments:

Dear Bill,

Please find attached pictures taken on 10/1/96 and comments for the Coastal pit closures.

- #1. Coastal Sawyer Fed. #4 unit H sec 4-Ts 10s-R37e. Picture looking west. 10/1/96 by Wayne Price.
- #2. Coastal Santa Fe #1&2. Unit F sec 33-Ts9s-R37e. Picture looking NW. 10/1/96 by Wayne Price.
- #3. Coastal Adlong #5. Unit A sec 5-Ts10s-R37e. Picture looking NW. 10/1/96 by Wayne Price.
- #4. Coastal Flying M Battery #4, two pits, east & west. Unit D sec 29-Ts9s-R33e. Picture of "east" pit looking north 10/1/96 by Wayne Price.. The chunks of asphaltines shown in the picture still contains volatile organics and when broken apart the material is very soft. This pit is not solidified and just under the surface there still is oily material. **Recommend additional action before closure.**
- #6. Same Location as above. Picture of "west" side pit looking north. 10/1/96 by Wayne Price. Same comments as above. **Recommend additional action before closure.**
- #7. Coastal Flying M Battery #3 pit, Unit K, sec 29-Ts9s-R33e. Picture looking north. 10/1/96 by Wayne Price.
- #8. Coastal State 5 Battery #1, Unit B sec 5-Ts14s-R33e. Picture looking west and shows excavated pit area. 10/1/96 by Wayne Price. Visual contamination remains in pit.

#9&10. Same location as above. #9 looking SW shows remediated soil. 10/1/96 by Wayne Price.

#10 looking west. 10/1/96 by Wayne Price.

**Recommend vertical extent of contamination in pit to be checked before closure.**

#11. Coastal State 36 #2, Unit L, sec 31-Ts13s-R33e. Picture looking north. 10/1/96 by Wayne Price.

Coastal State 23-26 pit, Unit D, sec 26, Ts14s-R32e. No picture. Area of old pit is mounded 2 feet high, soil is colored dark brown from by-products of remediation. Has remediated to where surface has no odor and some weed growth.

cc: Jerry Sexton-NMOC District I Supervisor.  
Vic Vise-Coastal Oil & Gas.

attachments-pictures.



State of New Mexico  
ENERGY, MINERALS and NATURAL RESOURCES DEPARTMENT  
Santa Fe, New Mexico 87505

STATE OF  
NEW MEXICO  
DE  
CONSERVATION  
DIVISION

MEMORANDUM OF MEETING OR CONVERSATION

☒ Telephone ☐ Personal

Time 2945

Date 8/14/93

Originating Party

Other Parties

Pom Rider - Coastal 246  
(713) 877-3828

Bill Olson - Environmental Bureau

Subject

Pt Closure

Discussion

Will start approval Pt Closure on 8/16/93

It will be at Best Western in Hobbs, can contact  
at their Tatum office

Conclusions or Agreements

Distribution

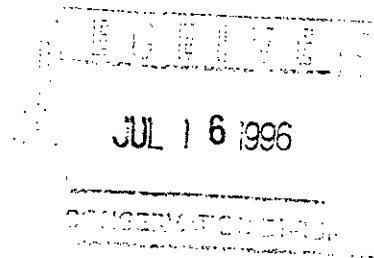
Signed

Bill Olson



**Coastal**  
The Energy People

MICHAEL E. McALLISTER Ph.D.  
DIRECTOR  
ENVIRONMENTAL & SAFETY AFFAIRS  
COASTAL OIL & GAS CORPORATION



July 3, 1996

Energy, Minerals, and Natural Resources Department  
Oil Conservation Division  
P. O. Box 2088  
Santa Fe, New Mexico 87504-2088

Attn: William C. Olson  
Environmental Bureau

Re: Production Pit Completed Closures  
Lea County, New Mexico

Dear Mr. Olson:

On August 4, 1993, your office approved Coastal Oil & Gas Corporation's (Coastal) "Treatment and Closure Plan for Oil Field Production Pits". This plan was to be implemented and followed until all 10 pits were remediated and closure levels were achieved. These levels were established at 10ppm Benzene, 50 ppm BTEX and 5,000 ppm TPH.

Coastal is in the process of offering several of our New Mexico properties for sale. These locations include the sites of four (4) pits which were included in the above referenced closure plan. The procedure required Coastal to forward to your office a closure summary after all pits have achieved closure. With a potential "Change of Operator", it is necessary to deviate from the approved plan and submit the closure documentation on the four (4) pits in question. They are located in the Sawyer Field which are located within 15 miles of Crossroads, New Mexico, and include the following sites:

Sawyer Federal #4  
Adlong #5  
Santa Fe #1  
Santa Fe #2

All procedures as outlined in our approved closure plan were followed. As a result of being located immediately adjacent to each other, the Santa Fe #1 and #2 pits were consolidated to form one remediation site.

**Coastal Oil & Gas Corporation**

A SUBSIDIARY OF THE COASTAL CORPORATION  
COASTAL TOWER • NINE GREENWAY PLAZA • HOUSTON, TX 77046-0995 • TEL 877-2083 • FAX 281-666-1190

Coastal requested Biotek Environmental Services, Inc., which is the third party contractor used for this project, to collect soil samples from the designated sites and forward them to Xenco Laboratories for analysis. Xenco is a New Mexico certified laboratory. Attached for your information and review is a copy of the Analytical Report verifying the clean-up levels for these sites were achieved.

Additionally are copies of photographs of each site. Please note that the photos of the Santa Fe Pits #1 and #2 is the same location taken from different directions.

Coastal's position is that these locations have been closed to the specified requirements and will require no additional follow-up and/or treatments. Once the six (6) remaining sites are complete, we will provide the additional documentation.

If there are any questions, or if additional information is needed, please call. Thank you for your assistance.

Very truly yours,



Michael E. McAllister, Ph.D.

MEM/tj



# **ANALYTICAL REPORT 1-61028**

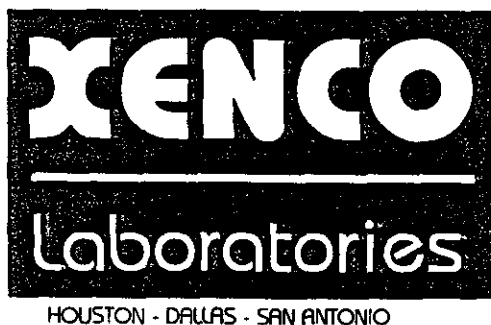
**for**

**Biotek Environmental Services, Inc.**

**Project Manager: Lonnie Decell**

**Project Name: Coastal New Mexico**

**June 25, 1996**



**11381 Meadowglen Lane Suite L \* Houston, Texas 77082-2647**  
**Phone (713) 589-0692 Fax (713) 589-0695**



11381 Meadowglen Suite L  
Houston, Texas 77082-2647  
(713) 589-0692 Fax: (713) 589-0695  
Houston - Dallas - San Antonio

June 25, 1996

Project Manager: Lonnie Decell  
Biotek Environmental Services, Inc.  
3200 Wilcrest, #400  
Houston, TX 77042

Reference: **XENCO Report No.: 1-61028**  
**Project Name: Coastal New Mexico**

Dear Lonnie Decell:

We are reporting to you the results of the analyses performed on the samples received under the project name referenced above and identified with XENCO Chain of Custody Number 1-61028. All results being reported to you apply only to the samples analyzed, properly identified with a Laboratory ID number. This letter documents the official transmission of the contents of the report and validates the information contained within.

All the results for the quality control samples passed thorough examination. Also, all parameters for data reduction and validation checked satisfactorily. In view of this, we are able to release the analytical data for this report within acceptance criteria for accuracy, precision, and completeness.

The validity and integrity of this report will remain intact as long as it is accompanied by this letter and reproduced in full, unless written approval is granted by XENCO Laboratories. This report will be filed for at least 3 years in our archives and after that time it will be destroyed without further notice, unless otherwise arranged with you. The samples received, and described as recorded in COC No. 1-61028 will be filed for 60 days, and after that time they will be properly disposed of without further notice, unless otherwise arranged with you. We reserve the right to return to you any unused samples, extracts or solutions related to them if we consider so necessary (e.g., samples identified as hazardous waste, sample sizes exceeding analytical standard practices, controlled substances under regulated protocols, etc).

XENCO Laboratories is accredited by the American Association for Laboratory Accreditation (A2LA) for technical competence in the field of Environmental Testing (Certificate No. 0343-01). In accordance with A2LA's guidelines, XENCO operates a Quality System that meets ISO/IEC Guide 25 requirements and is strictly implemented and enforced through our standard QA/QC procedures.

We thank you for selecting XENCO Laboratories to serve your analytical needs. If you have any questions concerning this report, please feel free to contact us at any time.

Sincerely,

  
Eddie Yonemoto, Ph.D.  
QA/QC Manager

*Recipient of the Prestigious Small Business Administration Award of Excellence in 1994.*  
*Certified in California, Oklahoma, Kansas, Arkansas, and approved by numerous other States and Agencies.*  
*A Small Business and Minority Status Company that delivers SERVICE and QUALITY!*



1551 WASHINGTON BLVD L. FORT WORTH, TEXAS 76102  
(714) 589-0892 Fax (714) 589-0895

# CONTAINER RECORD AND ANALYSIS REQUEST FORM

Lab. Batch # 16028

Contractor <b>Biotech Environmental</b>		Phone (714) 782-3984		Fax (714) 782-3984	
Address <b>3200 Wilcrest Street 400</b>		City <b>COASTAL NEW MEXICO</b>		State <b>NEW MEXICO</b>	
Project Name <b>COASTAL NEW MEXICO</b>		Project Director <b>Jack Creel</b>		Project Manager <b>Lonnie DeCell</b>	
Project Location <b>COASTAL NEW MEXICO</b>		Project No. <b>782-3984</b>		Project No. <b>782-3984</b>	
Supplier Signature <b>Jack Creel</b>		Project No. <b>782-3984</b>		Project No. <b>782-3984</b>	
No. of CONTAINERS					
Total					
No. of containers this shipment					
Carrier					
Altitude No.					
Contractor COC #					
Queue # 1					
PO. No.					
LAB ONLY ID #					
Turn-around					
- ASAP					
- 24 hrs					
- 48 hrs					
- 72 hrs					
- 96 hrs					
- 120 hrs					
- 144 hrs					
- 168 hrs					
- 192 hrs					
- 216 hrs					
- 240 hrs					
- 264 hrs					
- 288 hrs					
- 312 hrs					
- 336 hrs					
- 360 hrs					
- 384 hrs					
- 408 hrs					
- 432 hrs					
- 456 hrs					
- 480 hrs					
- 504 hrs					
- 528 hrs					
- 552 hrs					
- 576 hrs					
- 600 hrs					
- 624 hrs					
- 648 hrs					
- 672 hrs					
- 696 hrs					
- 720 hrs					
- 744 hrs					
- 768 hrs					
- 792 hrs					
- 816 hrs					
- 840 hrs					
- 864 hrs					
- 888 hrs					
- 912 hrs					
- 936 hrs					
- 960 hrs					
- 984 hrs					
- 1008 hrs					
- 1032 hrs					
- 1056 hrs					
- 1080 hrs					
- 1104 hrs					
- 1128 hrs					
- 1152 hrs					
- 1176 hrs					
- 1200 hrs					
- 1224 hrs					
- 1248 hrs					
- 1272 hrs					
- 1296 hrs					
- 1320 hrs					
- 1344 hrs					
- 1368 hrs					
- 1392 hrs					
- 1416 hrs					
- 1440 hrs					
- 1464 hrs					
- 1488 hrs					
- 1512 hrs					
- 1536 hrs					
- 1560 hrs					
- 1584 hrs					
- 1608 hrs					
- 1632 hrs					
- 1656 hrs					
- 1680 hrs					
- 1704 hrs					
- 1728 hrs					
- 1752 hrs					
- 1776 hrs					
- 1800 hrs					
- 1824 hrs					
- 1848 hrs					
- 1872 hrs					
- 1896 hrs					
- 1920 hrs					
- 1944 hrs					
- 1968 hrs					
- 1992 hrs					
- 2016 hrs					
- 2040 hrs					
- 2064 hrs					
- 2088 hrs					
- 2112 hrs					
- 2136 hrs					
- 2160 hrs					
- 2184 hrs					
- 2208 hrs					
- 2232 hrs					
- 2256 hrs					
- 2280 hrs					
- 2304 hrs					
- 2328 hrs					
- 2352 hrs					
- 2376 hrs					
- 2400 hrs					
- 2424 hrs					
- 2448 hrs					
- 2472 hrs					
- 2496 hrs					
- 2520 hrs					
- 2544 hrs					
- 2568 hrs					
- 2592 hrs					
- 2616 hrs					
- 2640 hrs					
- 2664 hrs					
- 2688 hrs					
- 2712 hrs					
- 2736 hrs					
- 2760 hrs					
- 2784 hrs					
- 2808 hrs					
- 2832 hrs					
- 2856 hrs					
- 2880 hrs					
- 2904 hrs					
- 2928 hrs					
- 2952 hrs					
- 2976 hrs					
- 3000 hrs					
- 3024 hrs					
- 3048 hrs					
- 3072 hrs					
- 3096 hrs					
- 3120 hrs					
- 3144 hrs					
- 3168 hrs					
- 3192 hrs					
- 3216 hrs					
- 3240 hrs					
- 3264 hrs					
- 3288 hrs					
- 3312 hrs					
- 3336 hrs					
- 3360 hrs					
- 3384 hrs					
- 3408 hrs					
- 3432 hrs					
- 3456 hrs					
- 3480 hrs					
- 3504 hrs					
- 3528 hrs					
- 3552 hrs					
- 3576 hrs					
- 3600 hrs					
- 3624 hrs					
- 3648 hrs					
- 3672 hrs					
- 3696 hrs					
- 3720 hrs					
- 3744 hrs					
- 3768 hrs					
- 3792 hrs					
- 3816 hrs					
- 3840 hrs					
- 3864 hrs					
- 3888 hrs					
- 3912 hrs					
- 3936 hrs					
- 3960 hrs					
- 3984 hrs					
- 4008 hrs					
- 4032 hrs					
- 4056 hrs					
- 4080 hrs					
- 4104 hrs					
- 4128 hrs					
- 4152 hrs					
- 4176 hrs					
- 4200 hrs					
- 4224 hrs					
- 4248 hrs					
- 4272 hrs					
- 4296 hrs					
- 4320 hrs					
- 4344 hrs					
- 4368 hrs					
- 4392 hrs					
- 4416 hrs					
- 4440 hrs					
- 4464 hrs					
- 4488 hrs					
- 4512 hrs					
- 4536 hrs					
- 4560 hrs					
- 4584 hrs					
- 4608 hrs					
- 4632 hrs					
- 4656 hrs					
- 4680 hrs					
- 4704 hrs					
- 4728 hrs					
- 4752 hrs					
- 4776 hrs					
- 4800 hrs					
- 4824 hrs					
- 4848 hrs					
- 4872 hrs					
- 4896 hrs					
- 4920 hrs					
- 4944 hrs					
- 4968 hrs					
- 4992 hrs					
- 5016 hrs					
- 5040 hrs					
- 5064 hrs					
- 5088 hrs					
- 5112 hrs					
- 5136 hrs					
- 5160 hrs					
- 5184 hrs					
- 5208 hrs					
- 5232 hrs					
- 5256 hrs					
- 5280 hrs					
- 5304 hrs					
- 5328 hrs					
- 5352 hrs					
- 5376 hrs					
- 5400 hrs					
- 5424 hrs					
- 5448 hrs					
- 5472 hrs					
- 5496 hrs					
- 5520 hrs					
- 5544 hrs					
- 5568 hrs					
- 5592 hrs					
- 5616 hrs					
- 5640 hrs					
- 5664 hrs					
- 5688 hrs					
- 5712 hrs					
- 5736 hrs					
- 5760 hrs					
- 5784 hrs					
- 5808 hrs					
- 5832 hrs					
- 5856 hrs					
- 5880 hrs					
- 5904 hrs					
- 5928 hrs					
- 5952 hrs					
- 5976 hrs					
- 6000 hrs					
- 6024 hrs					
- 6048 hrs					
- 6072 hrs					
- 6096 hrs					
- 6120 hrs					
- 6144 hrs					
- 6168 hrs					
- 6192 hrs					
- 6216 hrs					
- 6240 hrs					
- 6264 hrs					
- 6288 hrs					
- 6312 hrs					
- 6336 hrs					
- 6360 hrs					
- 6384 hrs					
- 6408 hrs					
- 6432 hrs					
- 6456 hrs					
- 6480 hrs					
- 6504 hrs					
- 6528 hrs					
- 6552 hrs					
- 6576 hrs					
- 6600 hrs					
- 6624 hrs					
- 6648 hrs					
- 6672 hrs					
- 6696 hrs					
- 6720 hrs					
- 6744 hrs					
- 6768 hrs					
- 6792 hrs					
- 6816 hrs					
- 6840 hrs					
- 6864 hrs					
- 6888 hrs					
- 6912 hrs					
- 6936 hrs					
- 6960 hrs					
- 6984 hrs					
- 7008 hrs					
- 7032 hrs					
- 7056 hrs					
- 7080 hrs					
- 7104 hrs					
- 7128 hrs					
- 7152 hrs					
- 7176 hrs					
- 7200 hrs					
- 7224 hrs					
- 7248 hrs					
- 7272 hrs					
- 7296 hrs					
- 7320 hrs					
- 7344 hrs					
- 7368 hrs					
- 7392 hrs					
- 7416 hrs					
- 7440 hrs					
- 7464 hrs					
- 7488 hrs					
- 7512 hrs					
- 7536 hrs					
- 7560 hrs					
- 7584 hrs					
- 7608 hrs					
- 7632 hrs					
- 7656 hrs					
- 7680 hrs					
- 7704 hrs					
- 7728 hrs					
- 7752 hrs					
- 7776 hrs					
- 7800 hrs					
- 7824 hrs					
- 7848 hrs					
- 7872 hrs					
- 7896 hrs					
- 7920 hrs					
- 7944 hrs					
- 7968 hrs					
- 7992 hrs					
- 8016 hrs					
- 8040 hrs					
- 8064 hrs					
- 8088 hrs					
- 8112 hrs					
- 8136 hrs					
- 8160 hrs					
- 8184 hrs					
- 8208 hrs					
- 8232 hrs					
- 8256 hrs					
- 8280 hrs					
- 8304 hrs					
- 8328 hrs					
- 8352 hrs					
- 8376 hrs					
- 8400 hrs					
- 8424 hrs					
- 8448 hrs					
- 8472 hrs					
- 8496 hrs					
- 8520 hrs					
- 8544 hrs					
- 8568 hrs					
- 8592 hrs					
- 8616 hrs					
- 8640 hrs					
- 8664 hrs					
- 8688 hrs					
- 8712 hrs					
- 8736 hrs					
- 8760 hrs					
- 8784 hrs					
- 8808 hrs					
- 8832 hrs					
- 8856 hrs					
- 8880 hrs					
- 8904 hrs					
- 8928 hrs					
- 8952 hrs					
- 8976 hrs					
- 9000 hrs					
- 9024 hrs					
- 9048 hrs					
- 9072 hrs					
- 9096 hrs					
- 9120 hrs					
- 9144 hrs					
- 9168 hrs					
- 9192 hrs					
- 9216 hrs					
- 9240 hrs					
- 9264 hrs					
- 9288 hrs					
- 9312 hrs					
- 9336 hrs					
- 9360 hrs					
- 9384 hrs					
- 9408 hrs					
- 9432 hrs					
- 9456 hrs					
- 9480 hrs					
- 9504 hrs					
- 9528 hrs					
- 9552 hrs					
- 9576 hrs					
- 9600 hrs					
- 9624 hrs					
- 9648 hrs					
- 9672 hrs					
- 9696 hrs					
- 9720 hrs					
- 9744 hrs					
- 9768 hrs					
- 9792 hrs					
- 9816 hrs					
- 9840 hrs					
- 9864 hrs					
- 9888 hrs					
- 9912 hrs					
- 9936 hrs					
- 9960 hrs					
- 9984 hrs					
- 10000 hrs					

Pre-scheduling is recommended  
Pick (Contractor) Yellow & White (Lab)  
Precision Analytical Services



# ANALYTICAL CHAIN OF CUSTODY REPORT CHRONOLOGY OF SAMPLES

BioteK Environmental Services, Inc.

XENCO COC#: 1-61028

Project Name: Coastal New Mexico

Project Manager: Lonnie Decell

Date Received In Lab: Jun 18, 1996 15:30 by CT

Project Location:

XENCO contact : Edward Yonemoto/Crystal

Date and Time									
Field ID	Lab. ID	Method Name	Method ID	Units	Turn Around	Sample Collected	Addition Requested	Extraction	Analysis
1 Santa Fe Pit-1 Pit-2	161028-001	BTEX	SW-846	ppm	Standard	Jun 12, 1996		Jun 20, 1996 by OR	Jun 20, 1996 17:59 by OR
2		TPH8015M-D	SW-846 8015 M	mg/kg	Standard	Jun 12, 1996		Jun 19, 1996 by IF	Jun 21, 1996 20:24 by MM
3 Sawyer Field Fed #4	161028-002	BTEX	SW-846	ppm	Standard	Jun 12, 1996		Jun 20, 1996 by OR	Jun 20, 1996 16:49 by OR
4		TPH8015M-D	SW-846 8015 M	mg/kg	Standard	Jun 12, 1996		Jun 19, 1996 by IF	Jun 21, 1996 21:04 by MM
5 AD Long #5	161028-003	BTEX	SW-846	ppm	Standard	Jun 12, 1996		Jun 20, 1996 by OR	Jun 20, 1996 17:42 by OR
6		TPH8015M-D	SW-846 8015 M	mg/kg	Standard	Jun 12, 1996		Jun 19, 1996 by IF	Jun 21, 1996 21:34 by MM

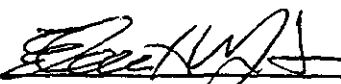
H.T.\*

**CERTIFICATE OF ANALYSIS SUMMARY 1-61028****Blotek Environmental Services, Inc.****Project Name: Coastal New Mexico****Project Manager:** Lonnie Decell**Date Received in Lab:** Jun 18, 1996 15:30 by CT**Project Location:****Date Report Faxed:** Jun 25, 1996 09:00**XENCO contact:** Edward Yonemoto/Crystal Dousay

<b>Analysis Requested</b>	<b>Lab ID:</b>	161028-001	161028-002	161028-003			
	<b>Field ID:</b>	Santa Fe	Sawyer F	AD Long			
	<b>Depth:</b>						
<b>TPH8015M-D Analyzed by SW846-8015m</b>		<b>Date Analyzed - Analytical Results ppm (mg/L - mg/Kg)</b>					
		Jun 21, 1996	Jun 21, 1996	Jun 21, 1996			
Total Petroleum Hydrocarbons		< 100	< 100	< 100			
<b>BTEX Analyzed by EPA 8020</b>		<b>Date Analyzed - Analytical Results ppm (mg/L - mg/Kg)</b>					
		Jun 20, 1996	Jun 20, 1996	Jun 20, 1996			
Benzene		< 0.020	< 0.020	< 0.020			
Toluene		< 0.020	< 0.020	< 0.020			
Ethylbenzene		< 0.020	< 0.020	< 0.020			
m,p-Xylenes		< 0.040	< 0.040	< 0.040			
o-Xylene		< 0.020	< 0.020	< 0.020			
Total BTEX		< 0.120	< 0.120	< 0.120			

This report summary, and the entire report it represents, has been made for the exclusive and confidential use of Blotek Environmental Services, Inc..

The interpretations and results expressed through this analytical report represent the best judgment of XENCO Laboratories. Xenco Laboratories, however, assumes no responsibility and makes no warranty to the end use of the data hereby presented.

  
Edward H. Yonemoto, Ph.D.  
QA/QC Manager



# Certificate Of Quality Control for Batch : 16A24B32


SW- 346 3015 M TPH 3015 Mod. (Diesel)

Date Validated: Jun 24, 1996 15:30  
Date Analyzed: Jun 21, 1996 22:03  
QA/QC Manager: Edward H. Yonemoto, Ph.D.

Analyst: MM  
Matrix: Solid

Q.C. Sample ID 161023- 003	MATRIX DUPLICATE ANALYSIS					MATRIX SPIKE ANALYSIS				
	[A] Sample Result mg/kg	[B] Duplicate Result mg/kg	[C] Method Detection Limit mg/kg	[D]		[F] Matrix Spike Result mg/kg	[G] Matrix Spike Amount mg/kg	[H]		[I] LIMITS Recovery Range %
				QC	Relative Difference %			QC	Matrix Spike Recovery %	
Parameter										
Total Petroleum Hydrocarbons	<100	<100	100	N.C	30.0	6930	6000	115.5		65-135

Relative Difference [D] =  $200 \times (B-A) / (B+A)$   
Matrix Spike Recovery [H] =  $100 \times (F-A) / (G)$   
N.C. = Not calculated, data below detection limit  
N.D. = Below detection limit  
All results are based on MDL and validated for QC purposes only

  
Edward H. Yonemoto, Ph.D.  
QA/QC Manager



# Certificate Of Quality Control for Batch : 16A04C05

SW- 346 5030/3020 RTEX

Date Validated: Jun 21, 1996 11:15

Date Analyzed: Jun 20, 1996 17:07

QA/QC Manager: Edward H. Yonemoto, Ph.D.

Analyst: OR

Matrix: Solid

Q.C. Sample ID 161023- 002  Parameter		MATRIX DUPLICATE ANALYSIS						MATRIX SPIKE ANALYSIS						
		[A] Sample Result  ppm	[B] Duplicate Result  ppm	[C] Method Detection Limit  ppm	[D]		[E]		[F] Matrix Spike Result  ppm	[G] Matrix Spike Amount  ppm	[H]		[I] LIMITS  Recovery Range  %	[J] Qualifier
					QC	Relative Difference  %	LIMITS	Relative Difference  %			QC	Matrix Spike Recovery  %		
Benzene		< 0.020	< 0.020	0.020	N.C	25.0	0.518	0.400	129.5		65-135			
Toluene		< 0.020	< 0.020	0.020	N.C	25.0	0.358	0.400	89.5		65-135			
Ethylbenzene		< 0.020	< 0.020	0.020	N.C	25.0	0.332	0.400	83.0		65-135			
m,p-Xylenes		< 0.040	< 0.040	0.040	N.C	25.0	0.990	0.800	123.8		65-135			
o-Xylene		< 0.020	< 0.020	0.020	N.C	25.0	0.454	0.400	113.5		65-135			

Relative Difference [D] =  $200 \times (B-A)/(B+A)$   
Matrix Spike Recovery [H] =  $100 \times (F-A)/[G]$   
N.C. = Not calculated, data below detection limit  
N.D. = Below detection limit  
All results are based on MDL and validated for QC purposes only

Edward H. Yonemoto, Ph.D.  
QA/QC Manager



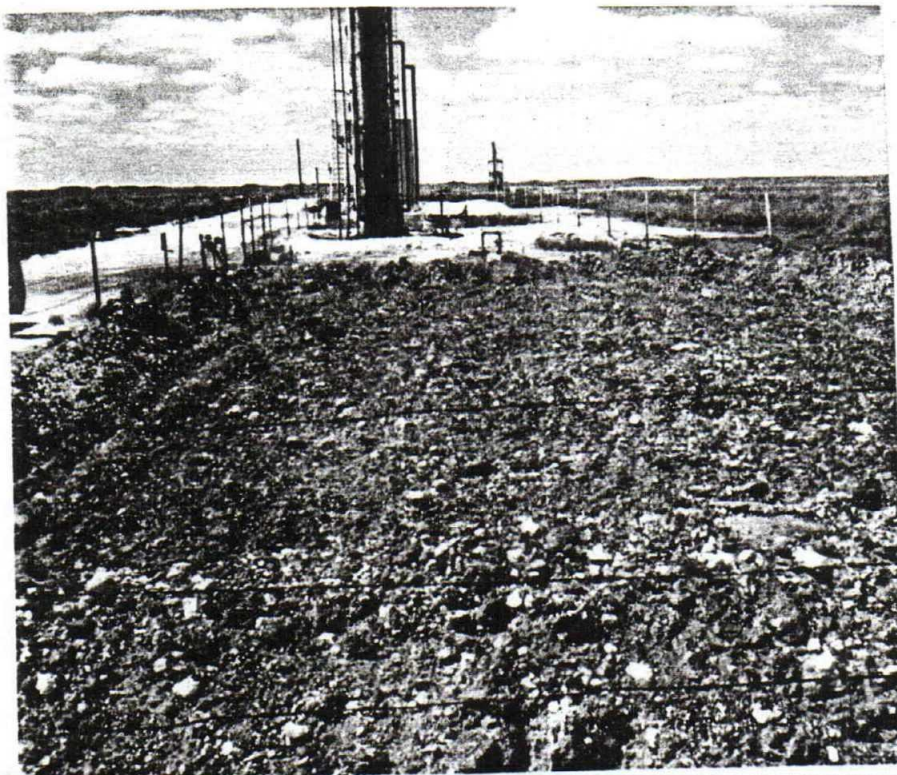


SANTA FE PITS #1

SANTA FE PITS #2







SAWYER FEDERAL #4



ADLONG #5



STATE OF NEW MEXICO

ENERGY, MINERALS AND NATURAL RESOURCES DEPARTMENT

OIL CONSERVATION DIVISION



BRUCE KING  
GOVERNOR

August 4, 1993

POST OFFICE BOX 2088  
STATE LAND OFFICE BUILDING  
SANTA FE, NEW MEXICO 87504  
(505) 827-5800

ANITA LOCKWOOD  
CABINET SECRETARY

**CERTIFIED MAIL**

**RETURN RECEIPT NO. P-667-242-372**

Mr. Michael E. McAllister  
Coastal Oil & Gas Corporation  
Coastal Tower  
Nine Greenway Plaza  
Houston, Texas 77046-0995

**RE: PRODUCTION PIT CLOSURE PLAN  
LEA COUNTY, NEW MEXICO**

Dear Mr. McAllister:

The New Mexico Oil Conservation Division (OCD) has completed a review of Coastal Oil & Gas' June 17, 1993 "TREATMENT AND CLOSURE PLAN FOR OIL FIELD PRODUCTION PITS", July 7, 1993 "PRODUCTION PIT CLOSURE PLAN, LEA COUNTY NEW MEXICO" and July 16, 1993 correspondence. These documents describe proposed procedures for closure of unlined pits at 10 oilfield production pits operated by Coastal Oil & Gas Corporation in Lea County, New Mexico.

The closure plan as described in the above referenced documents is hereby approved with the following conditions:

1. Coastal Oil & Gas will notify OCD at least 72 hours in advance of all activities such that OCD may witness the events and/or split samples.
2. Coastal Oil & Gas will submit a final report to OCD for approval within 60 days of completion of the closure project.

Please be advised that OCD approval does not relieve Coastal Oil & Gas of liability should contamination be discovered which is beyond the scope of the work plan. In addition, OCD approval does not relieve Coastal Oil & Gas of responsibility for compliance with any other federal, state or local laws and/or regulations. If you have any questions, please contact me at (505) 827-5885.

Sincerely,

William C. Olson  
Hydrogeologist  
Environmental Bureau

xc: OCD Hobbs District Office



**Coastal**  
The Energy People

WILLIAM C. OLSON  
DIRECTOR  
ENERGY, MINERALS & NATURAL RESOURCES  
STATE OF NEW MEXICO

July 16, 1993

TELEPHONE DIVISION  
193 JUL 24 09 10 39

RRR: P 144 579 155

State of New Mexico  
Energy, Minerals & Natural Resources  
P.O. Box 2088  
Santa Fe, New Mexico 87504  
Attn: William C. Olson

Dear Mr. Olson:

As per your telephone request of July 15, 1993, I would like to offer the following information:

- Attachment #1 provides the Section, Township and Range for the pits to be closed.
- Attachment #2 is the MSDA for the bacteria, catalyst and nutrient to be used to achieve the closure requirement.
- The composite soil samples which will be used to verify closure will be collected by hand auger to a depth of 8 inches below the pits contamination. The top two inches will be removed and a composite will be collected from the remaining 6 inches of native soil. Standard TPH laboratory analysis will be conducted. Four composite samples will be collected per pit.

Attachment #3 is a copy of the "Resolution of Commendation" presented to Coastal Oil & Gas Corporation for our pit closure efforts in Utah. We feel our experience in this area is unparalleled. Our proven technology, which is being adapted to this project, offers cost effective closure without long term potential environmental liabilities.

If additional information is required, please call.

Very truly yours,



Michael E. McAllister, Ph.D.

MEM/dm  
c:womm0716

Coastal Oil & Gas Corporation

*Attachment 1*

*Flying M Field*

Batteries 3&4

*Section 29, Township 9, Range 33W*

*Baum Field*

State 5 & 26

*Section 5, Township 14S, Range 33E*

*Tulk Field*

State 23-26

*Section 26, Township 14S, Range 32E*

*West Sawyer Field*

Adlong

*Section 5, Township 10S, Range 37E*

Santa Fe #2 (2 pits)

*Section 33, Township 9S, Range 37E*

Federal #4

*Section 4, Township 10S, Range 37E*

*Attachment 2*



## ATERIAL SAFETY DATA SHEET

**BIOTEK ENVIRONMENTAL SERVICES INC.**  
3200 Wilcrest, Suite 215  
Houston, Texas 77042

Date 05/15/92

Emergency Phone (713) 782-3984

**SECTION I - IDENTITY**

**NAME:** Alpha Micro Nutrient  
**D.O.T.:** Class not regulated  
**FORMULA:** 36 - 6 - 6 NKP plus micro-nutrients  
Water soluble fertilizer concentrate

**CHEMICAL FAMILY:** A mixture of dried natural salt tolerant soil/marine microorganisms in combination with inert clay or commercial vegetable extract. No hazardous components.

**SECTION II - PHYSICAL AND CHEMICAL CHARACTERISTICS**

Monoammonium phosphate - 9.9%  
Urea - 63.8%  
Potassium Nitrate - 13.1%  
Ammonium Nitrate - 11.3%  
Various Micronutrients - 1.5%

**SECTION III - PHYSICAL HAZARDS AND DATA**

Boiling Point:	N/A	Specific Gravity:	N/A
Water Solubility:	Completely Soluble	pH of Solution:	N/A
Appearance:	Lime Green	Odor:	N/A
Sinking-Out Temperature:	N/A	Vapor Pressure:	N/A
% Volatile by Volume:	N/A		

**SECTION IV - FIRE AND EXPLOSION DATA**

Flash Point:	N/A	Flammable Limit - Level:	N/A
Extinguishing Media:	Water		

**SPECIAL FIRE FIGHTING PROCEDURES:** Firemen must wear self-contained breathing apparatus. Heat can cause emission of highly toxic fumes. Heat can cause the nitrate present to act as an oxidizing agent which can support combustion or cause detonation of other products. Persons should be evacuated from down wind areas.

**UNUSUAL FIRE AND EXPLOSION HAZARDS:** Nitrates may decompose violently when mixed with ammonium salts.

**SECTION V - HEALTH AND FIRST AID DATA**

**Threshold Limit Values:** Not applicable - non toxic material.

**Effects of Over Exposure:** Not under normal usage and conditions. Oral Ingestion of large amounts may cause nitrate poisoning resulting in dizziness, abdominal cramps, vomiting, bloody diarrhea, weakness, convulsions and collapse.

**Skin:** If irritation occurs, flush with flowing water for at least 30 minutes. Seek medical attention if irritation persists.

**Eyes:** If eye irritation occurs, flush with flowing water for at least 30 minutes. Seek medical attention if irritation persists.

**Inhalation:** If breathing difficulty occurs due to dust inhalation, remove to fresh air. If discomfort continues, seek medical attention.

**Ingestion:** If person is conscious, give large amounts of water and induce vomiting. Seek medical attention.



**MATERIAL SAFETY DATA SHEET**

**BIOTEK ENVIRONMENTAL SERVICES INC.**  
3200 Wilcrest, Suite 215  
Houston, Texas 77042

Date 01/15/91

Emergency Phone (713) 782-3984

**SECTION I - IDENTITY**

**NAME:** Alpha Bio-Catalyst  
**D.O.T.:** Class not regulated  
**FORMULA:** Proprietary  
**CHEMICAL FAMILY:** Aqueous solution of various natural extracts and micronutrients - Biodegradable

**SECTION II - PHYSICAL AND CHEMICAL CHARACTERISTICS****FIRE AND EXPLOSION DATA**

Boiling Point	-	100°C	Fire Extinguisher Media	-	NA
Specific Gravity	-	1.00 +/- .01	Melting Point	-	NA
Percent Volatile by Vol	-	NA	Vapor Pressure mm/Hg	-	NA
Flammable Limit	-	NA	Vapor Density Air = 1	-	NA
Reactivity with WATER	-	No	Solubility in Water	-	Complete
Auto-Ignite Temperature	-	NA	Flash Point	-	NA
Evaporation Rate	-	Same as water	Odor	-	None
Appearance	-	Clear, odorless, colorless			

**SPECIAL FIRE FIGHTING PROCEDURES:**

Special Fire Fighting Procedures - NA  
Unusual Fire and Explosion Hazards - None

**SECTION III - PHYSICAL HAZARDS**

Stability	-	Stable	Incompatible Substance	-	None Known
Polymerization	-	No	Hazardous Decomposition	-	NA

**SECTION IV - HEALTH HAZARDS**

Health Hazards, Acute and Chronic	-	None
Conditions Aggravated by Exposure	-	None
Carcinogenicity	-	None

**NOT FOR HUMAN CONSUMPTION**

Emergency First Aid Procedures	-	None
--------------------------------	---	------

**SECTION V - SPECIAL PROTECTION**

Respiratory Protection	-	None
Ventilation Required	-	None
Exhaust Required	-	None
Protective Clothing	-	None

**SECTION VI - PRECAUTIONS FOR HANDLING AND USE**

Precautions to be taken in handling	-	None
Precautions to be taken in case of spill	-	None
Disposal procedures	-	None - Environmentally compatible to living organisms, soil and water. Follow all Federal, State and Local regulations for non-hazardous waste disposal

INFORMATION ON THIS MATERIAL SAFETY SHEET REFLECTS THE LATEST INFORMATION AND DATA THAT WE HAVE ON HAZARDS, PROPERTIES AND HANDLING OF THIS PRODUCT UNDER THE RECOMMENDED CONDITIONS OF USE. THIS MATERIAL SAFETY DATA SHEET WAS PREPARED TO COMPLY WITH 24 CFR 1910.1200.

**BIOTEK ENVIRONMENTAL SERVICES INC.**  
3200 Wilcrest, Suite 215  
Houston, Texas 77042

Date 01/15/91

Emergency Phone (713) 782-3984

### SECTION I - IDENTITY

**NAME:** Alpha Microbial Cultures (MICROX, PETROLOGIC, BIOSEA)  
**D.O.T.:** Class not regulated  
**FORMULA:** Proprietary  
**CHEMICAL FAMILY:** A mixture of dried natural salt tolerant soil/marine microorganisms in combination with inert clay or commercial vegetable extract. No hazardous components.

### SECTION II - PHYSICAL AND CHEMICAL CHARACTERISTICS

#### FIRE AND EXPLOSION DATA

Boiling Point	-	NA	Fire Extinguisher Media	-	Water
Specific Gravity	-	NA	Melting Point	-	NA
Percent Volatile by Vol	-	NA	Vapor Pressure mm/Hg	-	NA
Flammable Limit	-	NA	Vapor Density Air = 1	-	1.5
Reactivity with water	-	NA	Solubility in Water	-	Negligible
Auto-Ignite Temperature	-	NA	Flash Point	-	NA
Evaporation Rate	-	NA	Odor	-	Mild hydrocarbon aroma
Appearance	-	White to beige Powder			

#### SPECIAL FIRE FIGHTING PROCEDURES:

Special Fire Fighting Procedures - None  
Unusual Fire and Explosion Hazards - Hazardous mixture with air, 0.04 oz/cu.ft. minimum explosive limit.  
Minimum Ignition Temperature - 715° F.

### SECTION III - PHYSICAL HAZARDS

Stability	-	Stable	Incompatible Substance	-	None Known
Polymerization	-	No	Hazardous Decomposition	-	No

### SECTION IV - HEALTH HAZARDS

Health Hazards, Acute and Chronic	-	None
Conditions Aggravated by Exposure	-	Membrane irritation by dry powder
Carcinogenicity	-	None

#### NOT FOR HUMAN CONSUMPTION

Emergency First Aid Procedures	-	Wash or irrigate with water
--------------------------------	---	-----------------------------

### SECTION V - SPECIAL PROTECTION

Respiratory Protection	-	Not necessary
Ventilation Required	-	Normal
Local Exhaust Required	-	No
Protective Clothing	-	Plastic gloves and safety glasses

### SECTION VI - PRECAUTIONS FOR HANDLING AND USE

Precautions to be taken in handling	-	None
Precautions to be taken in case of spill	-	Dry sweep for disposal
Disposal procedures	-	Follow all Federal, State and Local regulations for non-hazardous waste disposal
Storage requirements	-	Clean, dry, normal room temperature

THE INFORMATION ON THIS MATERIAL SAFETY SHEET REFLECTS THE LATEST INFORMATION AND DATA THAT WE HAVE ON HAZARDS, PROPERTIES AND HANDLING OF THIS PRODUCT UNDER THE RECOMMENDED CONDITIONS OF USE. THIS MATERIAL SAFETY DATA SHEET WAS PREPARED TO COMPLY WITH 24 CFR 1910.1200.

*Attachment 3*



Michael O. Leavitt  
Governor

Ted Stewart  
Executive Director

James W. Carter  
Division Director

# State of Utah

DEPARTMENT OF NATURAL RESOURCES  
DIVISION OF OIL, GAS AND MINING

355 West North Temple  
3 Triad Center, Suite 350  
Salt Lake City, Utah 84180-1203  
801-538-5340  
801-359-3940 (Fax)  
801-538-5319 (TDD)

## RESOLUTION OF COMMENDATION 1993 EARTH DAY AWARD

**WHEREAS**, Earth Day is a day appointed for the preservation and reclamation of the environment for present and future generations; and

**WHEREAS**, environmental restoration in oil fields plays an important role in the responsible development of Utah's natural resources; and

**WHEREAS**, Coastal Oil and Gas Corporation went beyond the requirement of regulations to reclaim ninety-one emergency pits, bioremediate contaminated soil, and construct new synthetically lined emergency pits in the Altamont-Bluebell Fields; and

**WHEREAS**, the new pits protect ground water resources and prevent soil contamination;

**NOW, THEREFORE**, the Utah Board and Division of Oil, Gas and Mining do hereby recognize

### COASTAL OIL AND GAS CORPORATION

for its contribution to environmental protection and restoration and present this Earth Day Award on April 28, 1993.

David Lauriski, Chair  
Board of Oil, Gas and Mining

James W. Carter, Director  
Division of Oil, Gas and Mining



State of New Mexico  
**ENERGY, MINERALS and NATURAL RESOURCES DEPARTMENT**  
Santa Fe, New Mexico 87505

STATE OF  
NEW MEXICO  
OIL  
CONSERVATION  
DIVISION

MEMORANDUM OF MEETING OR CONVERSATION

☒ Telephone ☐ Personal

Time

1545

Date

7/14/93

Originating Party

Bill Olson - Envir Bureau

Other Parties

Mike McAlister - Coastal O&G  
(713) 877-6590

Subject

P.T. Closure Man Lea County

Discussion

Requested - MSDS on bugs  
- Depth of samples as requested in OCD 7/1/93 letter  
- Sec, township, Range of locations

He said pit. to be closed have asphaltic type contaminants  
and doesn't expect much migration

Conclusions or Agreements

He will submit info requested

Distribution

file

Signed

Will Olson



**Coastal**  
The Energy People

MICHAEL E. McALLISTER, Ph.D.  
DIRECTOR  
ENVIRONMENTAL SAFETY AFFAIRS  
COASTAL OIL & GAS CORPORATION

OIL CONSERVATION DIVISION  
RECEIVED

90 JUL 14 AM 8 57

July 7, 1993

RRR:P 144 579 154

State of New Mexico  
Energy, Minerals & Natural Resources  
P.O. Box 2088  
Santa Fe, New Mexico 87504  
Attn: William C. Olson

Re: Production Pit Closure Plan  
Lea County, New Mexico

Dear Mr. Olson:

Coastal Oil & Gas Corporation is in receipt of your July 1, 1993 correspondence requesting additional information pertaining to our proposed Production Pit Closure Plan.

Please consider the following as the response to your inquiry:

- 1) Hydrocarbon degrading bacteria will be introduced and maintained between  $10^9$  -  $10^{12}$  concentration. The nutrients to be added is a specially blended fertilizer with a high nitrogen content.
- 2) Our sample collection procedures will be to use a four (4) point composite sample per pit. A hand auger will be the collection tool.
- 3) The attached information provides the criteria used to establish the concentrations.
- 4) All collected samples will be analyzed using EPA approved methods:
  - Benzene, toluene, ethylbenzene, xylene  
EPA Method 8020
  - Total Petroleum Hydrocarbon  
EPA Method 418.1

If additional information is needed, please call.

Very truly yours,

  
Michael E. McAllister, Ph.D.

## RANKING CRITERIA

### Tulk Field

#### State #23-36 Battery

- A. Depth to Ground Water - > 200' - 0
- B. Wellhead Protection Area - yes - 0
- C. Distance to Surface Waterbody - > 1000' - 0
- D. Native Soil Type - Moderate - 5

Ranking Criteria - 5

### Baum Field

#### State #5

- A. Depth to Ground Water - > 200' - 0
- B. Wellhead Protection Area - yes - 0
- C. Distance to Surface Waterbody - > 1000' - 0
- D. Native Soil type - Moderate - 0

Ranking Criteria - 5

#### State #36

- A. Depth to Ground Water - > 200' - 0
- B. Wellhead Protection Area - yes - 0
- C. Distance to Surface Waterbody - > 1000' - 0
- D. Native Soil Type - Moderate - 0

Ranking Criteria - 5

### Flying M Field

#### Battery #4 (2 pits)

- A. Depth to Ground Water - > 200' - 0
- B. Wellhead Protection Area - yes - 0
- C. Distance to Surface Waterbody - > 1000' - 0
- D. Native Soil Type - Moderate - 5

Ranking Criteria - 5

Battery #3

A.	Depth to Ground Water - > 200'	- 0
B.	Wellhead Protection Area - yes	- 0
C.	Distance to Surface Waterbody - > 1000'	- 0
D.	Native Soil Type - Moderate	- 5
	Ranking Criteria	- 5

Sawyer Field

Santa Fe #2 (2 pits)

A.	Depth to Ground Water - > 200'	- 0
B.	Wellhead Protection Area - yes	- 0
C.	Distance to Surface Waterbody - > 1000'	- 0
D.	Native Soil Type - Moderate	- 5
	Ranking Criteria	- 5

Adlong #5

A.	Depth to Ground Water - > 200'	- 0
B.	Wellhead Protection Area - Yes	- 0
C.	Distance to Surface Waterbody - > 1000'	- 0
D.	Native Soil Type - Moderate	- 5
	Ranking Criteria	- 5

Federal #4

A.	Depth to Ground Water - > 200'	- 0
B.	Wellhead Protection Area - Yes	- 0
C.	Distance to Surface Waterbody - > 1000'	- 0
D.	Native Soil Type - Moderate	- 5
	Ranking Criteria	- 5





STATE OF NEW MEXICO

ENERGY, MINERALS AND NATURAL RESOURCES DEPARTMENT

OIL CONSERVATION DIVISION



BRUCE KING  
GOVERNOR

ANITA LOCKWOOD  
CABINET SECRETARY

July 1, 1993

POST OFFICE BOX 2088  
STATE LAND OFFICE BUILDING  
SANTA FE, NEW MEXICO 87504  
(505) 827-5800

**CERTIFIED MAIL**  
**RETURN RECEIPT NO. P-667-242-353**

Mr. Michael E. McAllister  
Coastal Oil & Gas Corporation  
Coastal Tower  
Nine Greenway Plaza  
Houston, Texas 77046-0995

**RE: PRODUCTION PIT CLOSURE PLAN  
LEA COUNTY, NEW MEXICO**

Dear Mr. McAllister:

The New Mexico Oil Conservation Division (OCD) is in the process of reviewing Coastal's June 17, 1993 "TREATMENT AND CLOSURE PLAN FOR OIL FIELD PRODUCTION PITS". This document describes proposed procedures for closure of unlined pits at 10 oilfield production pits operated by Coastal Oil & Gas Corporation in Lea County, New Mexico.

The techniques proposed for remediation of contaminated soils are acceptable. However, the OCD has the following requests for information and questions regarding the above referenced document:

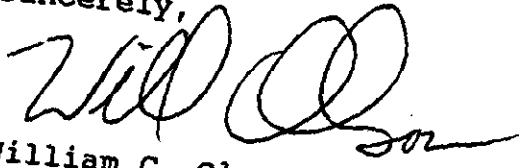
1. Please provide information on the types and concentrations of nutrients and microbes to be used for bioremediation.
2. No information was provided on the locations or depth intervals of the samples to be taken. Please provide this information.
3. The document states that the soil remediation levels are established at 10 parts per million (ppm) Benzene, 50 ppm Total BTEX and 5,000 ppm Total Petroleum Hydrocarbons, but does not provide the criteria upon which these concentrations were derived. Please either provide this information for each site or provide a commitment to submit this information for each site in the final closure report.

Mr. Michael E. McAllister  
July 1, 1993  
Page 2

4. Please provide information on the laboratory methods to be used in the analysis of all samples.

Submission of the above information will allow OCD to complete a review of this closure plan. If you have any questions please contact me at (505) 827-5885.

Sincerely,

  
William C. Olson  
Hydrogeologist  
Environmental Bureau

xc: OCD Hobbs District Office

<b>SENDER:</b> <ul style="list-style-type: none"><li>• Complete items 1 and/or 2 for additional services.</li><li>• Complete items 3. and 4a &amp; b.</li><li>• Print your name and address on the reverse of this form so that we can return this card to you.</li><li>• Attach this form to the front of the mailpiece, or on the back if space does not permit.</li><li>• Write "Return Receipt Requested" on the mailpiece next to the article number.</li></ul>		I also wish to receive the following services (for an extra fee): <ul style="list-style-type: none"><li>1. <input type="checkbox"/> Addressee's Address</li><li>2. <input type="checkbox"/> Restricted Delivery</li></ul> Consult postmaster for fee.	
3. Article Addressed to: Mr. Michael E. McAllister Coastal Oil & Gas Corp. Coastal Tower Nine Greenway Plaza Houston TX 77046-0995		4a. Article Number P-667-242-353	
5. Signature (Addressee)		4b. Service Type <ul style="list-style-type: none"><li><input type="checkbox"/> Registered <input type="checkbox"/> Insured</li><li><input checked="" type="checkbox"/> Certified <input type="checkbox"/> COD</li><li><input type="checkbox"/> Express Mail <input type="checkbox"/> Return Receipt for Merchandise</li></ul>	
6. Signature (Agent)		7. Date of Delivery	
		8. Addressee's Address (Only if requested and fee is paid)	



**Coastal**  
The Energy People

MICHAEL E. McALLISTER, Ph. D.  
DIRECTOR  
ENVIRONMENTAL & SAFETY AFFAIRS  
COASTAL OIL & GAS CORPORATION

RRR: P144 579 151

June 17, 1993

Energy, Minerals, and Natural Resources Department  
Oil Conservation Division  
P O Box 2088  
Santa Fe, New Mexico 87504-2088  
Attn: Chris Eustice

**RECEIVED**

JUN 21 1993

OIL CONSERVATION

**RE: Treatment and Closure Plan for Oil Field Production Pits**

**Dear Chris:**

Coastal Oil & Gas Corporation hereby submits the following treatment and closure plan for 10 oilfield production pits operated from our Tatum, New Mexico office. Earthen pits were dug to accommodate flows from the oil/water separators and other operations during the early operating years at four of these fields (located in Lea County, New Mexico). The four fields are the Tulk, Baum, Sawyer, and Flying M. The Tulk field is located approximately 29 miles northwest of Lovington, New Mexico, and has one pit to be closed in this field. The Baum field is approximately 15 miles north of the Tulk field, and there are two pits to be closed in this field. The two pits are within 1 mile of each other. The Sawyer and Flying M fields are both located within 15 miles of Crossroads, New Mexico, with the Flying M to the west and the Sawyer to the east. In the Flying M field there are three pits to be closed, with two pits being side by side, and the other within a mile of the two. At the Sawyer field there are four pits to be closed. Two of the pits are located at the same site, and the other two are within 1/2 mile of each other. Operations are currently continuing in these fields, however, these pits are no longer being utilized.

The ten pits to be closed contain various degrees of hydrocarbon contamination. Five of the pits contain an oil and water mixture, which due to the high pour-point viscosity of the oil, has formed an approximately one-foot thick slop oil layer on top of the water in the pit. The oil in these pits has been designated as non-recoverable. Two of the pits contain a weathered hydrocarbon that is approximately one foot thick, with small amounts of water floating on the surface of the pits. At the three remaining pits, an attempt has been made to close the pits by mixing the contents with soil from the surrounding area. While this has covered the pits, the entrained oil is now leaching to the surface, negating the closure attempt.

A TCLP-Metals laboratory analysis was conducted on composite samples collected from the associated liquids and soils. The analyticals indicate that the materials contents are below regulatory limits.

**Coastal Oil & Gas Corporation**

A SUBSIDIARY OF THE COASTAL CORPORATION  
COASTAL TOWER • NINE GREENWAY PLACE • HOUSTON, TX 77046-0995 • 713 877-6590 • TLX 166008 • FAX 713-877-1230

page 2  
June 17, 1993

Coastal Oil & Gas Corporation will employ the services of Biotek Environmental Services, Inc. (Biotek).

Biotek will use a bio-augmentation of microbes ( $10^{12}$  per gram) micro-nutrients, and a proprietary liquid bio-catalyst to treat "in place" the designated pits. Extra soil and water will be added where needed to insure a proper mix of all soil and treatment components. The pits will be retreated and tilled each month until closure levels are achieved, which are established at 10ppm Benzene, 50ppm BTEX and 5,000ppm TPH.

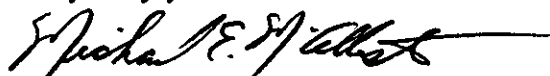
A representative from Coastal Oil & Gas Corporation's Environmental & Safety Affairs Department and a field service manager for Biotek will be present for the initial treatment and will direct all treatments and dirt work. All safety procedures will be followed. Biotek's service manager has completed Hazmat training and is certified under OSHA 1910.120 certificate #1562.

One composite sample will be collected each month from each of the ten (10) pits until closure. A Houston based laboratory will be utilized for analysis until closure levels are reached. At that point a complete "closure analysis" will be performed by a New Mexico laboratory.

After closure levels are achieved on all ten (10) pits, a closure summary of the treatment process will be prepared, all chain of custody forms, analytical reports, and photographs of the closed pits will be included and forwarded to your office.

If there are any questions, problems or if additional information is needed, please call.

Very truly yours



Michael E. McAllister, Ph.D.

MEM/dm  
c:cemm0617  
cc: Jack Creel/Biotek