

Office  
 District I – (575) 393-6161  
 1625 N. French Dr., Hobbs, NM 88240  
 District II – (575) 748-1283  
 811 S. First St., Artesia, NM 88210  
 District III – (505) 334-6178  
 1000 Rio Brazos Rd., Aztec, NM 87410  
 District IV – (505) 476-3460  
 1220 S. St. Francis Dr., Santa Fe, NM  
 87505

State of New Mexico  
 Energy, Minerals and Natural Resources

Form C-103  
 Revised July 18, 2013

OIL CONSERVATION DIVISION  
 1220 South St. Francis Dr.  
 Santa Fe, NM 87505

<b>SUNDRY NOTICES AND REPORTS ON WELLS</b> (DO NOT USE THIS FORM FOR PROPOSALS TO DRILL OR TO DEEPEN OR PLUG BACK TO A DIFFERENT RESERVOIR. USE "APPLICATION FOR PERMIT" (FORM C-101) FOR SUCH PROPOSALS.)		WELL API NO. 30-039-26968
1. Type of Well: Oil Well <input type="checkbox"/> Gas Well <input checked="" type="checkbox"/> Other		5. Indicate Type of Lease STATE <input checked="" type="checkbox"/> FEE <input type="checkbox"/>
2. Name of Operator LOGOS Operating, LLC		6. State Oil & Gas Lease No. E-347
3. Address of Operator 2010 Afton Place, Farmington NM 87401		7. Lease Name or Unit Agreement Name Rosa Unit
4. Well Location Unit Letter <u>C</u> : <u>210</u> feet from the <u>ENL</u> line and <u>1905</u> feet from the <u>FWL</u> line Section <u>32</u> Township <u>31N</u> Range <u>05W</u> NMPM County <u>Rio Arriba</u>		8. Well Number <u>24C</u>
11. Elevation (Show whether DR, RKB, RT, GR, etc.) 6500'		9. OGRID Number 289408
		10. Pool name or Wildcat Basin Dakota / Blanco Mesaverde

12. Check Appropriate Box to Indicate Nature of Notice, Report or Other Data

NOTICE OF INTENTION TO:	SUBSEQUENT REPORT OF:
PERFORM REMEDIAL WORK <input type="checkbox"/>	REMEDIAL WORK <input type="checkbox"/>
TEMPORARILY ABANDON <input type="checkbox"/>	ALTERING CASING <input type="checkbox"/>
PULL OR ALTER CASING <input type="checkbox"/>	COMMENCE DRILLING OPNS. <input type="checkbox"/>
DOWNHOLE COMMINGLE <input checked="" type="checkbox"/>	P AND A <input type="checkbox"/>
CLOSED-LOOP SYSTEM <input type="checkbox"/>	CASING/CEMENT JOB <input type="checkbox"/>
OTHER: <input type="checkbox"/>	OTHER: <input type="checkbox"/>

13. Describe proposed or completed operations. (Clearly state all pertinent details, and give pertinent dates, including estimated date of starting any proposed work). SEE RULE 19.15.7.14 NMAC. For Multiple Completions: Attach wellbore diagram of proposed completion or recompletion.

Pre-approved Pool Division Order R-13122.

Pools to be commingled: Blanco Mesaverde (72319) and Basin Dakota (71599).

Perforated Intervals:

Blanco Mesaverde: 4735' - 5998'

Basin Dakota: 7890' - 8100'

Fixed percentage allocation based upon production data 50% Blanco Mesaverde and 50% Basin Dakota. This is based upon the historic production of both the Mesaverde and Dakota production zones within the well.

Commingling will not reduce the value of reserves.

Interest owners in the spacing unit have not been notified of the intent of the downhole commingle per order R-12991.

BLM has been notified on sundry notice form 3160-5.

Spud Date:

Rig Release Date:

I hereby certify that the information above is true and complete to the best of my knowledge and belief.

SIGNATURE Marie E. Florez TITLE Regulatory Specialist DATE 1/25/2021

Type or print name Marie E. Florez E-mail address: mflorez@logosresourcesllc.com PHONE: 505-419-8420

**For State Use Only**

APPROVED BY: \_\_\_\_\_ TITLE \_\_\_\_\_ DATE \_\_\_\_\_

Conditions of Approval (if any):



## DOWNHOLE COMMINGLE PROCEDURE AND ALLOCATION-NMOCD (2021)

**Rosa Unit 24C**  
**30-039-26968**  
**210' FNL & 1905' FWL**  
**Section 32, T31N, R05W**  
**Rio Arriba, New Mexico**  
**LAT: 36.8627319° N LONG: -107.388176° W**  
**Mesaverde/Dakota**

### **PROJECT OBJECTIVE:**

Remove packer and downhole commingle Mesaverde and Dakota.

### **WORKOVER PROCEDURE:**

1. Hold safety meeting. MIRU workover rig. Place fire and safety equipment in strategic locations. Comply with all LOGOS, BLM, and NMOCD rules and regulations.
2. Lay flow lines. Check and record casing and tubing pressures. Rig up blow lines from casing valves to rig pit. Kill well if necessary.
3. Nipple down wellhead and nipple up BOP.
4. Release Mesaverde tubing string. Trip out of hole with Mesaverde tubing string and lay down.
5. Release Dakota tubing string. Trip out of hole with Dakota tubing string and lay down.
6. Run in hole with packer plucker to retrieve Model D Packer at 6100'. Trip out of hole with packer plucker assembly and string.
7. Run in hole with single 2-3/8" production tubing string.
8. Return to production as a Mesaverde/Dakota commingle.

### **PRODUCTION ALLOCATION**

Historic production data from both zones in this well was gathered and analyzed. Cumulative production was used to determine allocations and allocations were verified with recent production history.

#### **Cumulative Production**

Cumulative production from well	1,045 MMcf
Cumulative MV production	525 MMcf
Cumulative DK production	520 MMcf

MV allocation = MV cumulative/total cumulative = 525/1,045 = **50%**

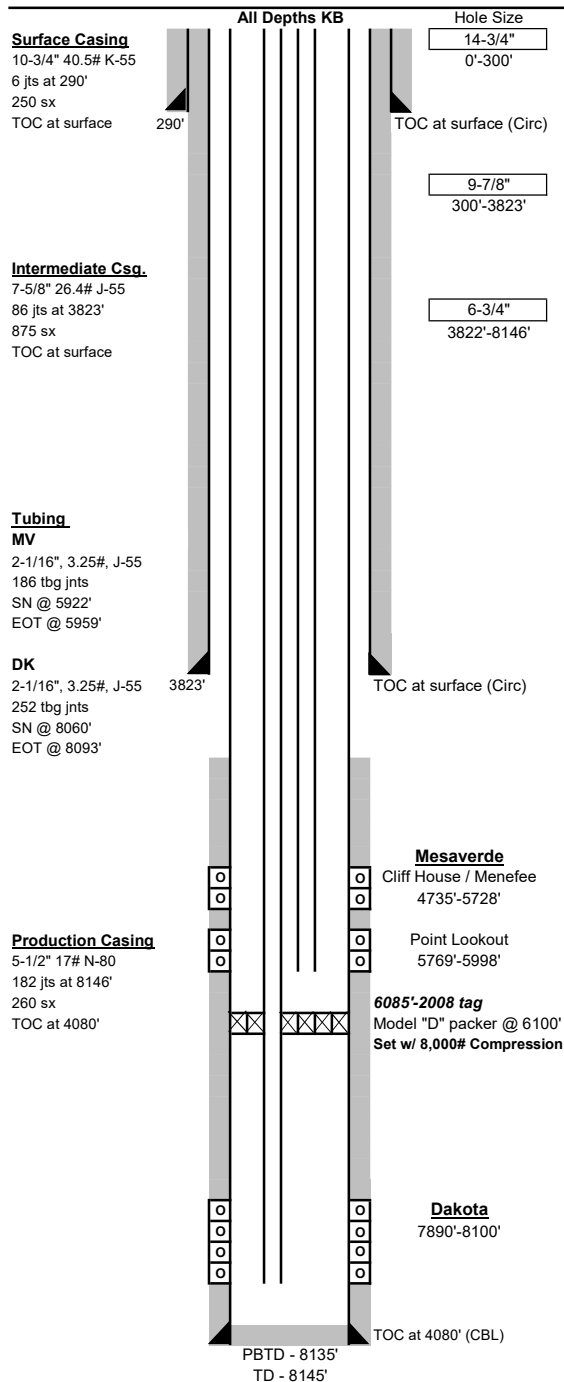
DK allocation = DK cumulative /total cumulative = 520/1,045 = **50%**



## Wellbore Schematic

Well Name: Rosa Unit 24C  
 Location: Sec 32, T31N, R05W 210' FNL & 1905' FWL  
 County: Rio Arriba  
 API #: 30-039-26968  
 Co-ordinates: Lat 36.8627319°, -107.388176° NAD 83  
 Elevations: GROUND: 6500'  
 KB: 6514'  
 Depths (KB): PBDT: 8135'  
 TD: 8145'

Date Prepared: 12/4/2020 Gomez  
 Reviewed by: 12/15/2020 Moss  
 Spud Date: 6/26/2002  
 Completion Date: 7/26/2002  
 Last Workover Date: 12/8/2008  
 Last Updated:



**Surface Casing: (6/26/2002)**  
 Drilled 14-3/4" surface hole to 300'. Ran 6 jts 10-3/4" 40.5# K-55 csg set at 290'.  
 Cmt'd w/ 250 sx Type III RMS (350 cf). Circulated 13 bbls of cement to surface.

**Intermediate Casing: (7/2/2002)**  
 Drilled 9-7/8" intermediate hole to 3823'. Ran 86 jts 7-5/8" 26.4# J-55 csg set at 3823'.  
 Cmt'd lead w/ 620 sx Type III 65/35 poz (1292 cf). Cmt'd tail w/ 255 sx Type III cmt (352 cf).  
 Circulated 25 bbls of cement to surface.

**Production Casing: (7/3/2002)**  
 Drilled 6-3/4" production hole to 8146'. Ran 182 jts 5-1/2" 17# N-80 csg set at 8146'.  
 Cmt'd w/ 30 sx Premium Lite HS (80 cf). Cmt tail w/ 230 sx Premium Lite HS (470 cf).  
 TOC at 4080' CBL.

Tubing: MV (12/8/2008)	Length (ft)
KB	14
(185) 2-1/16", 3.25#, IJ J-55 tbg jnts	5907
(1) 1-1/2" Seat nipple	1 *est
(1) 2-1/16", 3.25#, IJ J-55 tbg jnt	32 *est
(1) Perf sub w/ expendable check	6 *est
Set at:	5959 ft

Tubing: DK (8/4/2002)	Length (ft)
KB	14
(189) 2-1/16", 3.25#, IJ J-55 tbg jnts	6089
(1) 6' Seal bore assembly (2.688")	6
(61) 2-1/16", 3.25#, IJ J-55 tbg jnts	1951
(1) 1-1/2" Seat nipple	1
(1) 2-1/16", 3.25#, IJ J-55 tbg jnt	32
(1) Muleshoe collar	0
Set at:	8093 ft

**Perforations: (7/26/2002)**  
**Dakota: (7890'-8100')** 1 SPF, 0.46" dia, 22.12" pen & 19 g charges: Acid 500 gal 15% HCl.  
 7890', 82', 87', 7992', 95', 8028', 32', 34', 38', 41', 45', 62', 65', 68', 74', 8100'.  
 Frac w/ 4500# 100 mesh ahead, 85,240# 20/40 Ottawa sand, 5240# FLEX sand in 20Q foam.

**Mesaverde: Point Lookout- (5769'-5998')** 1 SPF, 0.33" dia, 16.76" pen & 10 g charges.  
 5769', 73', 89', 92', 96', 5800', 5', 7', 13', 16', 22', 26', 33', 43', 47', 50', 54', 58', 76', 80', 5900', 17',  
 44', 80', 98'. Acidize w/ 1000 gal 15% HCl. Frac w/ 81,000# 20/40 AZ sand in 1921 bbls FW.

**Mesaverde: Cliff House/ Menefee- (4735'-5728')** 1 SPF 0.33" dia, 16.8" pen & 10 g charges.  
 4735', 4839', 46', 5080', 84', 5293', 5311', 5425', 79', 88', 5528', 32', 56', 83', 86', 88', 92', 5654', 58',  
 63', 67', 69', 73', 77', 5707', 10', 13', 28'. Acidize w/ 1000 gal 15% HCl.  
 Frac w/ 79,000# 20/40 AZ sand in 1851 bbl FW.

Formations:		
Ojo Alamo-	2642'	Gallup- 7097'
Kirtland-	2762'	Dakota- 7977'
Pictured Cliffs-	3352'	
Lewis-	3642'	
Cliff House-	5509'	
Menefee-	5558'	
Point Lookout-	5787'	
Mancos-	6127'	

**Additional Notes:**  
 2008- Mesaverde tubing repair. Bottom 12 joints full of frac sand. Tagged sand at 5900' sand running.  
 Cleaned out to 6085'. 20' fill overnight, clean out to 6085'. Land tubing.

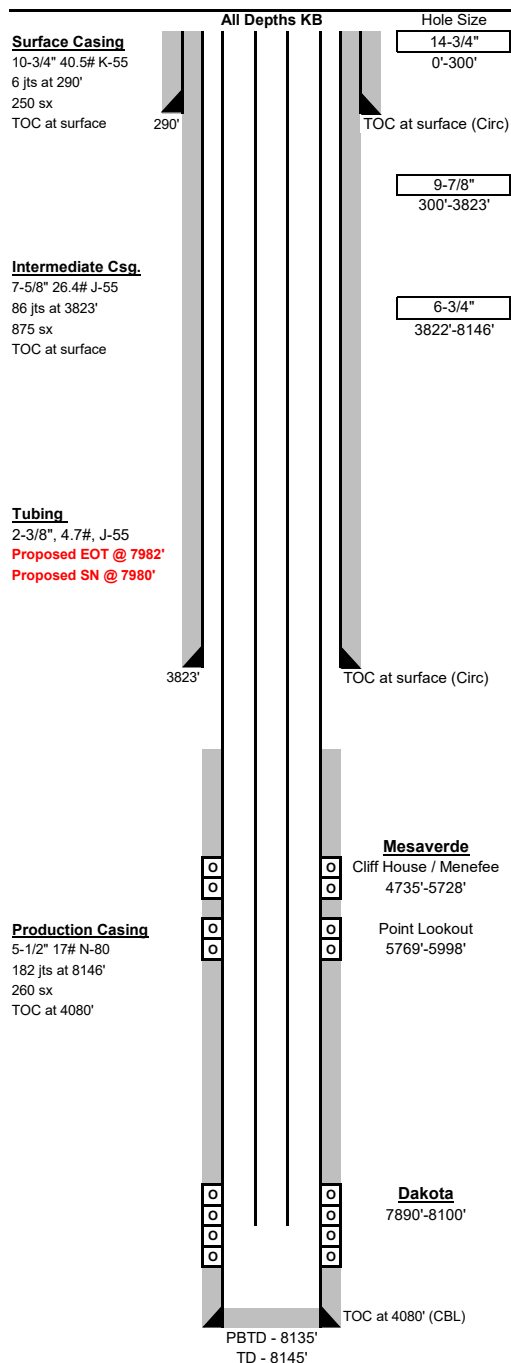
Max deviation 1 degree.



## Wellbore Schematic

Well Name: Rosa Unit 24C  
 Location: Sec 32, T31N, R05W 210' FNL & 1905' FWL  
 County: Rio Arriba  
 API #: 30-039-26968  
 Co-ordinates: Lat 36.8627319°, -107.388176° NAD 83  
 Elevations: GROUND: 6500'  
 KB: 6514'  
 Depths (KB): PBTD: 8135'  
 TD: 8145'

Date Prepared: 2/4/2021 Hespe  
 Reviewed by:  
 Spud Date: 6/26/2002  
 Completion Date: 7/26/2002  
 Last Workover Date: 12/8/2008  
 Last Updated:

**Surface Casing: (6/26/2002)**

Drilled 14-3/4" surface hole to 300'. Ran 6 jts 10-3/4" 40.5# K-55 csg set at 290'.  
 Cmt'd w/ 250 sx Type III RMS (350 cf). Circulated 13 bbls of cement to surface.

**Intermediate Casing: (7/2/2002)**

Drilled 9-7/8" intermediate hole to 3823'. Ran 86 jts 7-5/8" 26.4# J-55 csg set at 3823'.  
 Cmt'd lead w/ 620 sx Type III 65/35 poz (1292 cf). Cmt'd tail w/ 255 sx Type III cmt (352 cf).  
 Circulated 25 bbls of cement to surface.

**Production Casing: (7/3/2002)**

Drilled 6-3/4" production hole to 8146'. Ran 182 jts 5-1/2" 17# N-80 csg set at 8146'.  
 Cmt'd w/ 30 sx Premium Lite HS (80 cf). Cmt tail w/ 230 sx Premium Lite HS (470 cf).  
 TOC at 4080' CBL.

Tubing:	Length (ft)
KB	14
(~251) 2-3/8" 4.7# J-55 tubing joints	7932
(1) 2-3/8"x2' 4.7# J-55 tubing sub (marker joint)	2
(1) 2-3/8" 4.7# J-55 tubing joint	32
Seat Nipple (1.78" ID)	1
1/2 Muleshoe collar w/ expendable check	1
<b>Lengths estimated based on proposed landing depth</b>	
Set at:	7982 ft

**Perforations: (7/26/2002)**

**Dakota:** (7890'-8100') 1 SPF, 0.46" dia, 22.12" pen & 19 g charges; Acid 500 gal 15% HCl.  
 7890', 82', 87', 7992', 95', 8028', 32', 34', 38', 41', 45', 62', 65', 68', 74', 8100'.  
 Frac w/ 4500# 100 mesh ahead, 85,240# 20/40 Ottawa sand, 5240# FLEX sand in 20Q foam.

**Mesaverde: Point Lookout- (5769'-5998') 1 SPF, 0.33" dia, 16.76" pen & 10 g charges.**

5769', 73', 89', 92', 96', 5800', 5', 7', 13', 16', 22', 26', 33', 43', 47', 50', 54', 58', 76', 80', 5900', 17',  
 44', 80', 98'. Acidize w/ 1000 gal 15% HCl. Frac w/ 81,000# 20/40 AZ sand in 1921 bbls FW.

**Mesaverde: Cliff House/ Menefee- (4735'-5728') 1 SPF 0.33" dia, 16.8" pen & 10 g charges.**

4735', 4839', 46', 5080', 84', 5293', 5311', 5425', 79', 88', 5528', 32', 56', 83', 86', 88', 92', 5654', 58',  
 63', 67', 69', 73', 77', 5707', 10', 13', 28'. Acidize w/ 1000 gal 15% HCl.  
 Frac w/ 79,000# 20/40 AZ sand in 1851 bbl FW.

**Formations:**

Ojo Alamo-	2642'
Kirtland-	2762'
Pictured Cliffs-	3352'
Lewis-	3642'
Cliff House-	5509'
Menefee-	5558'
Point Lookout-	5787'
Mancos-	6127'
Gallup-	7097'
Dakota-	7977'

**Additional Notes:**

2008- Mesaverde tubing repair. Bottom 12 joints full of frac sand. Tagged sand at 5900' sand running.  
 Cleaned out to 6085', 20' fill overnight, clean out to 6085'. Land tubing.

Max deviation 1 degree.

**District I**

1625 N. French Dr., Hobbs, NM 88240  
Phone:(575) 393-6161 Fax:(575) 393-0720

**District II**

811 S. First St., Artesia, NM 88210  
Phone:(575) 748-1283 Fax:(575) 748-9720

**District III**

1000 Rio Brazos Rd., Aztec, NM 87410  
Phone:(505) 334-6178 Fax:(505) 334-6170

**District IV**

1220 S. St Francis Dr., Santa Fe, NM 87505  
Phone:(505) 476-3470 Fax:(505) 476-3462

**State of New Mexico**  
**Energy, Minerals and Natural Resources**  
**Oil Conservation Division**  
**1220 S. St Francis Dr.**  
**Santa Fe, NM 87505**

COMMENTS

Action 17241

**COMMENTS**

Operator:				OGRID:		Action Number:		Action Type:	
	LOGOS OPERATING, LLC	2010 Afton Place	Farmington, NM87401		289408		17241		C-107A

Created By	Comment	Comment Date
kpickford	KP GEO Review 2/8/2021	02/08/2021

**District I**  
1625 N. French Dr., Hobbs, NM 88240  
Phone:(575) 393-6161 Fax:(575) 393-0720  
**District II**  
811 S. First St., Artesia, NM 88210  
Phone:(575) 748-1283 Fax:(575) 748-9720  
**District III**  
1000 Rio Brazos Rd., Aztec, NM 87410  
Phone:(505) 334-6178 Fax:(505) 334-6170  
**District IV**  
1220 S. St Francis Dr., Santa Fe, NM 87505  
Phone:(505) 476-3470 Fax:(505) 476-3462

**State of New Mexico**  
**Energy, Minerals and Natural Resources**  
**Oil Conservation Division**  
**1220 S. St Francis Dr.**  
**Santa Fe, NM 87505**

CONDITIONS

Action 17241

**CONDITIONS OF APPROVAL**

Operator:	LOGOS OPERATING, LLC	2010 Afton Place	Farmington, NM87401	OGRID:	289408	Action Number:	17241	Action Type:	C-107A
OCD Reviewer	Condition								
kpickford	None								