

Office
 District I - (575) 393-6161
 1625 N. French Dr., Hobbs, NM 88240
 District II - (575) 748-1283
 811 S. First St., Artesia, NM 88210
 District III - (505) 334-6178
 1000 Rio Brazos Rd., Aztec, NM 87410
 District IV - (505) 476-3460
 1220 S. St. Francis Dr., Santa Fe, NM
 87505

State of New Mexico
 Energy, Minerals and Natural Resources

Form C-103
 Revised July 18, 2013

OIL CONSERVATION DIVISION
 1220 South St. Francis Dr.
 Santa Fe, NM 87505

| | | |
|---|--|--|
| SUNDRY NOTICES AND REPORTS ON WELLS (DO NOT USE THIS FORM FOR PROPOSALS TO DRILL OR TO DEEPEN OR PLUG BACK TO A DIFFERENT RESERVOIR. USE "APPLICATION FOR PERMIT" (FORM C-101) FOR SUCH PROPOSALS.) | | WELL API NO. MULTIPLE |
| 1. Type of Well: Oil Well <input checked="" type="checkbox"/> Gas Well <input type="checkbox"/> Other <input type="checkbox"/> | | 5. Indicate Type of Lease STATE <input type="checkbox"/> FEE <input type="checkbox"/> |
| 2. Name of Operator EOG Resources, Inc. | | 6. State Oil & Gas Lease No. |
| 3. Address of Operator P.O. Box 2267, Midland, TX 79702 | | 7. Lease Name or Unit Agreement Name Dauntless 7 Fed |
| 4. Well Location Unit Letter _____: _____ feet from the _____ line and _____ feet from the _____ line Section 7 Township 25S Range 3E NMPM Lea County | | 8. Well Number MULTIPLE |
| 11. Elevation (Show whether DR, RKB, RT, GR, etc.) | | 9. OGRID Number 7377 |
| 10. Pool name or Wildcat | | 10. Pool name or Wildcat |

12. Check Appropriate Box to Indicate Nature of Notice, Report or Other Data

| NOTICE OF INTENTION TO: | | SUBSEQUENT REPORT OF: | |
|--|---|--|--|
| PERFORM REMEDIAL WORK <input type="checkbox"/> | PLUG AND ABANDON <input type="checkbox"/> | REMEDIAL WORK <input type="checkbox"/> | ALTERING CASING <input type="checkbox"/> |
| TEMPORARILY ABANDON <input type="checkbox"/> | CHANGE PLANS <input type="checkbox"/> | COMMENCE DRILLING OPNS. <input type="checkbox"/> | P AND A <input type="checkbox"/> |
| PULL OR ALTER CASING <input type="checkbox"/> | MULTIPLE COMPL <input type="checkbox"/> | CASING/CEMENT JOB <input type="checkbox"/> | |
| DOWNHOLE COMMINGLE <input type="checkbox"/> | | | |
| CLOSED-LOOP SYSTEM <input type="checkbox"/> | | | |
| OTHER: <input type="checkbox"/> | | OTHER: PLC-885 | <input checked="" type="checkbox"/> |

13. Describe proposed or completed operations. (Clearly state all pertinent details, and give pertinent dates, including estimated date of starting any proposed work). SEE RULE 19.15.7.14 NMAC. For Multiple Completions: Attach wellbore diagram of proposed completion or recompletion.

Pursuant to Administrative Order PLC-885 EOG Resources, Inc. ("EOG") respectfully request to add the following wells authorized to commingle production at the central tank battery located in the SESW of Section 7, Township 25 South, Range 33 East, Lea County, NM. All production from the subject well will be allocated using readings from individual well meters.

| | |
|----------------------|--------------|
| Dauntless 7 Fed 215H | 30-025-51445 |
| Dauntless 7 Fed 512H | 30-025-51273 |
| Dauntless 7 Fed 513H | 30-025-50497 |
| Dauntless 7 Fed 514H | 30-025-50494 |
| Dauntless 7 Fed 515H | 30-025-51271 |
| Dauntless 7 Fed 521H | 30-025-51272 |
| Dauntless 7 Fed 583H | 30-025-51270 |

Spud Date:

Rig Release Date:

I hereby certify that the information above is true and complete to the best of my knowledge and belief.

SIGNATURE Lisa Youngblood TITLE Regulatory Specialist DATE 6/15/2023

Type or print name Lisa Youngblood E-mail address: lisa_youngblood@eogresources.com PHONE: 432-247-6331

For State Use Only

APPROVED BY: Dean R. McIlure TITLE Petroleum Engineer DATE 06/27/2023

Conditions of Approval (if any):

District I
1625 N. French Dr., Hobbs, NM 88240
Phone: (575) 393-6161 Fax: (575) 393-0720
District II
811 S. First St., Artesia, NM 88210
Phone: (575) 748-1283 Fax: (575) 748-9720
District III
1000 Rio Brazos Road, Aztec, NM 87410
Phone: (505) 334-6178 Fax: (505) 334-6170
District IV
1220 S. St. Francis Dr., Santa Fe, NM 87505
Phone: (505) 476-3460 Fax: (505) 476-3462

State of New Mexico
Energy, Minerals & Natural Resources
Department
OIL CONSERVATION DIVISION
1220 South St. Francis Dr.
Santa Fe, NM 87505

FORM C-102
Revised August 1, 2011
Submit one copy to appropriate
District Office

☐ AMENDED REPORT

WELL LOCATION AND ACREAGE DEDICATION PLAT

| | | | | | |
|---|--|---|--|---|----------------------------------|
| ¹ API Number 30-025-51445 | | ² Pool Code 97784 97903 | | ³ Pool Name WC-025 G-08 S253235G;LWR BONE SPRIN | |
| ⁴ Property Code 324978 | | ⁵ Property Name DAUNTLESS 7 FED | | | ⁶ Well Number 215H |
| ⁷ OGRID No. 7377 | | ⁸ Operator Name EOG RESOURCES, INC. | | | ⁹ Elevation 3491' |

¹⁰Surface Location

| UL or lot no. | Section | Township | Range | Lot Idn | Feet from the | North/South line | Feet from the | East/West line | County |
|---------------|---------|----------|-------|---------|---------------|------------------|---------------|----------------|--------|
| 4 | 7 | 25-S | 33-E | - | 310' | SOUTH | 805' | WEST | LEA |

¹¹Bottom Hole Location If Different From Surface

| UL or lot no. | Section | Township | Range | Lot Idn | Feet from the | North/South line | Feet from the | East/West line | County |
|---------------|---------|----------|-------|---------|---------------|------------------|---------------|----------------|--------|
| 4 | 6 | 25-S | 33-E | - | 100' | NORTH | 400' | WEST | LEA |

| | | | |
|---|-------------------------------|----------------------------------|---------------------------------------|
| ¹² Dedicated Acres 638.40 | ¹³ Joint or Infill | ¹⁴ Consolidation Code | ¹⁵ Order No. LEASE WELL |
|---|-------------------------------|----------------------------------|---------------------------------------|

No allowable will be assigned to this completion until all interests have been consolidated or a non-standard unit has been approved by the division.

| | | |
|--|--|--|
| | <p>NEW MEXICO EAST NAD 1983</p> <p><u>SURFACE LOCATION (SHL)</u></p> <p>310' FSL - SEC. 7 805' FWL - SEC. 7 X=762970 Y=414935 LAT.: N 32.1387102 LONG.: W 103.6172893</p> <p>KICK OFF POINT (KOP) <u>UPPER MOST PERF. (UMP)</u></p> <p>100' FSL - SEC. 7 400' FWL - SEC. 7 X=762567 Y=414723 LAT.: N 32.1381338 LONG.: W 103.6185971</p> <p><u>LOWER MOST PERF. (LMP)/ BOTTOM HOLE LOCATION (BHL)</u></p> <p>100' FNL - SEC. 6 400' FWL - SEC. 6 X=762517 Y=425084 LAT.: N 32.1666153 LONG.: W 103.6185359</p> | <p>¹⁷OPERATOR CERTIFICATION</p> <p>I hereby certify that the information contained herein is true and complete to the best of my knowledge and belief, and that this organization either owns a working interest or unleased mineral interest in the land including the proposed bottom hole location or has a right to drill this well at this location pursuant to a contract with an owner of such a mineral or working interest, or to a voluntary pooling agreement or a compulsory pooling order heretofore entered by the division.</p> <p><i>Lisa Youngblood</i> 4/26/23 Signature Date</p> <p>Lisa Youngblood Printed Name</p> <p>lisa_youngblood@eogresources.com E-mail Address</p> <p>¹⁸SURVEYOR CERTIFICATION</p> <p>I hereby certify that the well location shown on this plat was plotted from field notes of actual surveys made by me or under my supervision, and that the same is true to the best of my belief.</p> <p>04/11/2023 Date of Survey</p> <p>Signature and Seal of Professional Surveyor</p> <p>Certificate Number</p> <p>NEW MEXICO EAST NAD 1927</p> <p><u>SURFACE LOCATION (SHL)</u> X=721785 Y=414877 LAT.: N 32.1385858 LONG.: W 103.6168150</p> <p><u>UPPER MOST PERF. (UMP)</u> X=721381 Y=414665 LAT.: N 32.1380094 LONG.: W 103.6181228</p> <p><u>LOWER MOST PERF. (LMP)/ BOTTOM HOLE LOCATION (BHL)</u> X=721332 Y=425008 LAT.: N 32.1664911 LONG.: W 103.6180599</p> |
|--|--|--|

District I
1625 N. French Dr., Hobbs, NM 88240
Phone: (575) 393-6161 Fax: (575) 393-0720
District II
811 S. First St., Artesia, NM 88210
Phone: (575) 748-1283 Fax: (575) 748-9720
District III
1000 Rio Brazos Road, Aztec, NM 87410
Phone: (505) 334-6178 Fax: (505) 334-6170
District IV
1220 S. St. Francis Dr., Santa Fe, NM 87505
Phone: (505) 476-3460 Fax: (505) 476-3462

State of New Mexico
Energy, Minerals & Natural Resources
Department
OIL CONSERVATION DIVISION
1220 South St. Francis Dr.
Santa Fe, NM 87505

FORM C-102
Revised August 1, 2011
Submit one copy to appropriate
District Office

☐ AMENDED REPORT

WELL LOCATION AND ACREAGE DEDICATION PLAT

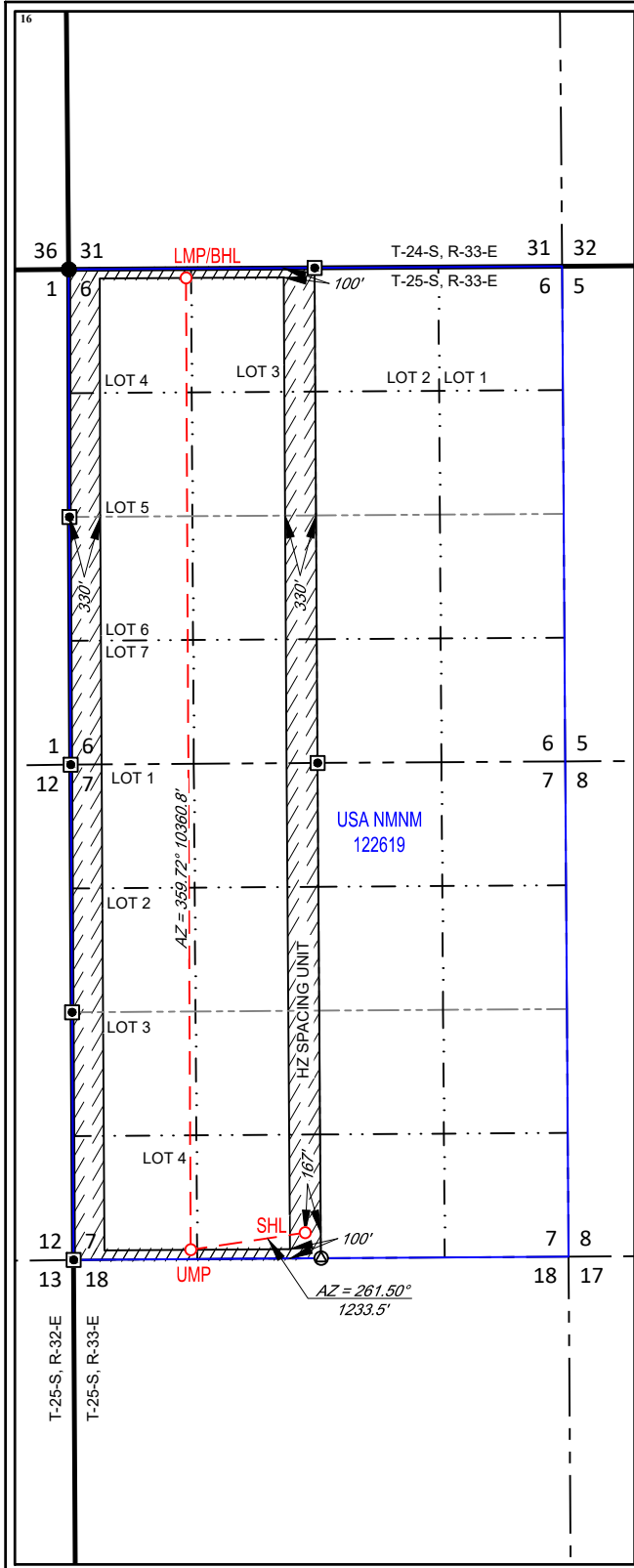
| | | | | | | |
|---|--|---|--|---|----------------------------------|--|
| ¹ API Number 30-025-50497 | | ² Pool Code 97903 | | ³ Pool Name WC-025 G-08 S253235G; Lower Bone Spring | | |
| ⁴ Property Code 324978 | | ⁵ Property Name DAUNTLESS 7 FED | | | ⁶ Well Number 513H | |
| ⁷ OGRID No. 7377 | | ⁸ Operator Name EOG RESOURCES, INC. | | | ⁹ Elevation 3493' | |

| | | | | | | | | | |
|--------------------------------|---------|----------|-------|---------|---------------|------------------|---------------|----------------|--------|
| ¹⁰ Surface Location | | | | | | | | | |
| UL or lot no. | Section | Township | Range | Lot Idn | Feet from the | North/South line | Feet from the | East/West line | County |
| N | 7 | 25 | 33 | — | 274' | SOUTH | 2471' | WEST | LEA |

| | | | | | | | | | |
|--|---------|----------|-------|---------|---------------|------------------|---------------|----------------|--------|
| ¹¹ Bottom Hole Location If Different From Surface | | | | | | | | | |
| UL or lot no. | Section | Township | Range | Lot Idn | Feet from the | North/South line | Feet from the | East/West line | County |
| 4 | 6 | 25 | 33 | — | 100' | NORTH | 1250' | WEST | LEA |

| | | | |
|---|-------------------------------|----------------------------------|-------------------------|
| ¹² Dedicated Acres 638.40 | ¹³ Joint or Infill | ¹⁴ Consolidation Code | ¹⁵ Order No. |
|---|-------------------------------|----------------------------------|-------------------------|

No allowable will be assigned to this completion until all interests have been consolidated or a non-standard unit has been approved by the division.



NEW MEXICO EAST
NAD 1983

SURFACE LOCATION (SHL)

274' FSL - SEC. 7
2471' FWL - SEC. 7
X=764637 Y=414911
LAT.: N 32.1386133
LONG.: W 103.6119060

UPPER MOST PERF. (UMP)

100' FSL - SEC. 7
1250' FWL - SEC. 7
X=763417 Y=414729
LAT.: N 32.1381343
LONG.: W 103.6158511

LOWER MOST PERF. (LMP)/
BOTTOM HOLE LOCATION (BHL)

100' FNL - SEC. 6
1250' FWL - SEC. 6
X=763367 Y=425089
LAT.: N 32.1666140
LONG.: W 103.6157890

¹⁷OPERATOR CERTIFICATION

I hereby certify that the information contained herein is true and complete to the best of my knowledge and belief, and that this organization either owns a working interest or unleased mineral interest in the land including the proposed bottom hole location or has a right to drill this well at this location pursuant to a contract with an owner of such a mineral or working interest, or to a voluntary pooling agreement or a compulsory pooling order heretofore entered by the division.

Star L Harrell 3/30/2023

Signature Date

Star L Harrell

Printed Name

star_harrell@eogresources.com

E-mail Address

¹⁸SURVEYOR CERTIFICATION

I hereby certify that the well location shown on this plat was plotted from field notes of actual surveys made by me or under my supervision, and that the same is true to the best of my belief.

07/19/2019

Date of Survey

Signature and Seal of Professional Surveyor

RAMON A. DOMINGUEZ
NEW MEXICO
24508
PROFESSIONAL SURVEYOR

Certificate Number

NEW MEXICO EAST
NAD 1927

SURFACE LOCATION (SHL)
X=723451 Y=414853
LAT.: N 32.1384899
LONG.: W 103.6114318

UPPER MOST PERF. (UMP)
X=722231 Y=414671
LAT.: N 32.1380099
LONG.: W 103.6153768

LOWER MOST PERF. (LMP)/
BOTTOM HOLE LOCATION (BHL)
X=722182 Y=425031
LAT.: N 32.1664898
LONG.: W 103.6153131

State of New Mexico
Energy, Minerals & Natural Resources
Department
OIL CONSERVATION DIVISION
1220 South St. Francis Dr.
Santa Fe, NM 87505

Revised August 1, 2011

Submit one copy to appropriate

District Office

☐ **AMENDED REPORT**

WELL LOCATION AND ACREAGE DEDICATION PLAT

| | | |
|--|--|--|
| ¹ API Number 30-025-50494 | ² Pool Code 97903 | ³ Pool Name WC-025 G-08 S253235G; Lower Bone Spring |
| ⁴ Property Code 324978 | ⁵ Property Name DAUNTLESS 7 FED | |
| ⁷ OGRID No. 7377 | ⁸ Operator Name EOG RESOURCES, INC. | |
| | ⁶ Well Number 514H | |
| | ⁹ Elevation 3493' | |

¹⁰Surface Location

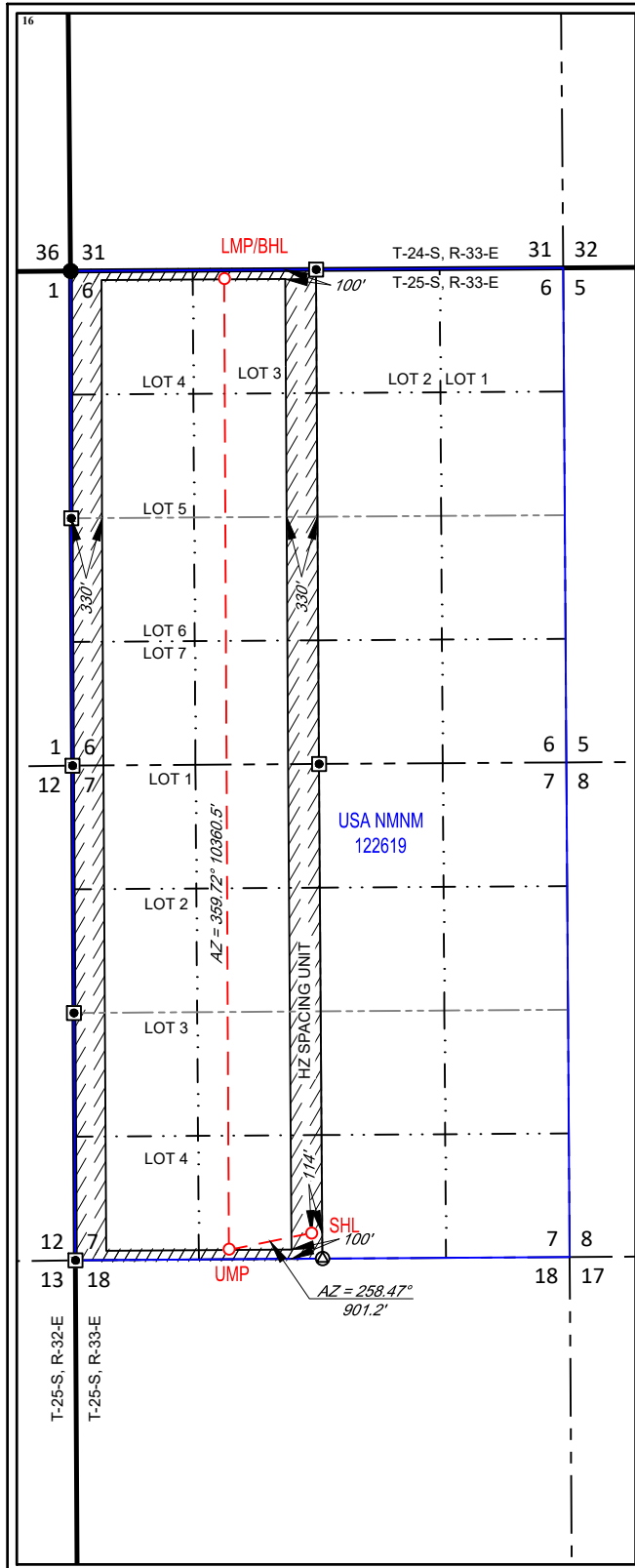
| | | | | | | | | | |
|---------------|---------|----------|-------|---------|---------------|------------------|---------------|----------------|--------|
| UL or lot no. | Section | Township | Range | Lot Idn | Feet from the | North/South line | Feet from the | East/West line | County |
| N | 7 | 25 | 33 | — | 274' | SOUTH | 2524' | WEST | LEA |

¹¹Bottom Hole Location If Different From Surface

| | | | | | | | | | |
|---------------|---------|----------|-------|---------|---------------|------------------|---------------|----------------|--------|
| UL or lot no. | Section | Township | Range | Lot Idn | Feet from the | North/South line | Feet from the | East/West line | County |
| 3 | 6 | 25 | 33 | — | 100' | NORTH | 1640' | WEST | LEA |

| | | | |
|--|-------------------------------|----------------------------------|-------------------------|
| ¹² Dedicated Acres 638.40 | ¹³ Joint or Infill | ¹⁴ Consolidation Code | ¹⁵ Order No. |
|--|-------------------------------|----------------------------------|-------------------------|

No allowable will be assigned to this completion until all interests have been consolidated or a non-standard unit has been approved by the division.

NEW MEXICO EAST
NAD 1983

SURFACE LOCATION (SHL)

274' FSL - SEC. 7
2524' FWL - SEC. 7
X=764690 Y=414911
LAT.: N 32.1386133
LONG.: W 103.6117348

UPPER MOST PERF. (UMP)

100' FSL - SEC. 7
1640' FWL - SEC. 7
X=763807 Y=414731
LAT.: N 32.1381346
LONG.: W 103.6145911

$$\frac{\text{LOWER MOST PERF. (LMP)}}{\text{BOTTOM HOLE LOCATION (BHL)}}$$

100' FNL - SEC. 6
1640' FWL - SEC. 6
X=763757 Y=425092
LAT.: N 32.1666133
LONG.: W 103.6145287

¹⁷OPERATOR CERTIFICATION

I hereby certify that the information contained herein is true and complete to the best of my knowledge and belief, and that this organization either owns a working interest or unleased mineral interest in the land including the proposed bottom hole location or has a right to drill this well at this location pursuant to a contract with an owner of such a mineral or working interest, or to a voluntary pooling agreement or a compulsory pooling order heretofore entered by the division.

Star L Harrell 3/30/2023

Star L Harrell
Printed Name

star_harrell@eogresources.com

E-mail Address

¹⁸SURVEYOR CERTIFICATION

I hereby certify that the well location shown on this plat was plotted from field notes of actual surveys made by me or under my supervision, and that the same is true to the best of my belief.

07/19/2019

Date of Survey
Signature and Seal of Professional Surveyor



Certificate Number

NEW MEXICO EAST
NAD 1927

SURFACE LOCATION (SHL)

X=723504 Y=414853
LAT.: N 32.1384890
LONG.: W 103.6112606

UPPER MOST PERF. (UMP)

X=722621 Y=414673
LAT.: N 32.1380102
LONG.: W 103.6141169

LOWER MOST PERF. (LMP)/
BOTTOM HOLE LOCATION (BHL)

X=722572 Y=425033
LAT.: N 32.1664891
LONG.: W 103.6140528

State of New Mexico
Energy, Minerals & Natural Resources
Department
OIL CONSERVATION DIVISION
1220 South St. Francis Dr.
Santa Fe, NM 87505

District Office

☐ **AMENDED REPORT**

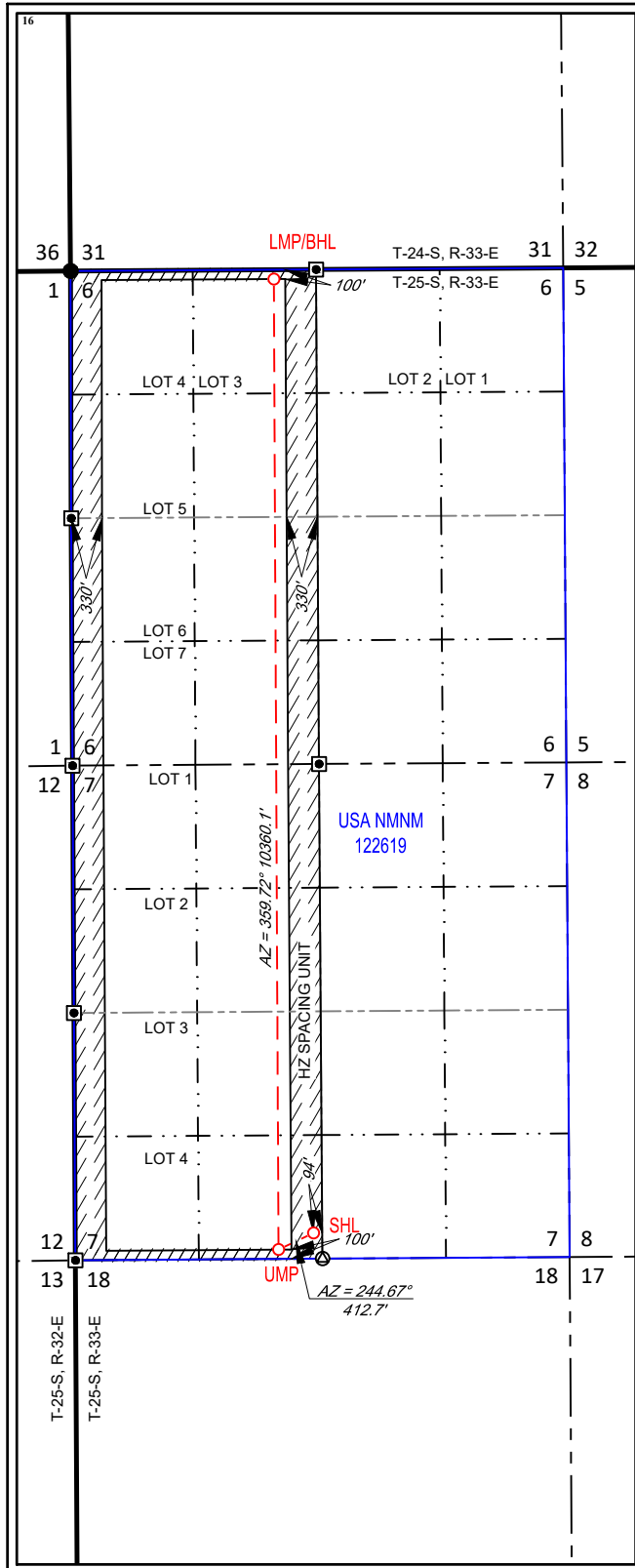
| | | | | |
|--|--|--|--|---|
| ¹ API Number 30-025-51271 | | ² Pool Code 97903 | ³ Pool Name WC-025 G-08 S253235G; Lower Bone Spring | |
| ⁴ Property Code 324978 | ⁵ Property Name DAUNTLESS 7 FED | | | ⁶ Well Number 515H |
| ⁷ OGRID No. 7377 | ⁸ Operator Name EOG RESOURCES, INC. | | | ⁹ Elevation 3493' |

| UL or lot no. | Section | Township | Range | Lot Idn | Feet from the | North/South line | Feet from the | East/West line | County |
|---------------|---------|----------|-------|---------|---------------|------------------|---------------|----------------|--------|
| N | 7 | 25 | 33 | — | 274' | SOUTH | 2544' | WEST | LEA |

| UL or lot no. | Section | Township | Range | Lot Idn | Feet from the | North/South line | Feet from the | East/West line | County |
|---------------|---------|----------|-------|---------|---------------|------------------|---------------|----------------|--------|
| 3 | 6 | 25 | 33 | — | 100' | NORTH | 2170' | WEST | LEA |

| | | | |
|--|-------------------------------|----------------------------------|-------------------------|
| ¹² Dedicated Acres 638.40 | ¹³ Joint or Infill | ¹⁴ Consolidation Code | ¹⁵ Order No. |
|--|-------------------------------|----------------------------------|-------------------------|

No allowable will be assigned to this completion until all interests have been consolidated or a non-standard unit has been approved by the division.



NEW MEXICO EAST
NAD 1983

SURFACE LOCATION (SHL)

274' FSL - SEC. 7
2544' FWL - SEC. 7
X=764710 Y=414912
LAT.: N 32.1386134
LONG.: W 103.6116701

UPPER MOST PERF. (UMP)

100' FSL - SEC. 7
2170' FWL - SEC. 7
X=764337 Y=414735
LAT.: N 32.1381349
LONG.: W 103.6128789

LOWER MOST PERF. (LMP)/
BOTTOM HOLE LOCATION (BHL)

100' FNL - SEC. 6
2170' FWL - SEC. 6
X=764287 Y=425095
LAT.: N 32.1666125
LONG.: W 103.6128159

I hereby certify that the information contained herein is true and complete to the best of my knowledge and belief, and that this organization either owns a working interest or unleased mineral interest in the land including the proposed bottom hole location or has a right to drill this well at this location pursuant to a contract with an owner of such a mineral or working interest, or to a voluntary pooling agreement or a compulsory pooling order heretofore entered by the division.

Star L Harrell 4/10/2023
Signature Date

Star L Harrell
Printed Name

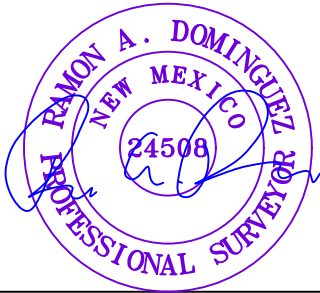
star_harrell@eogresources.com

E-mail Address

I hereby certify that the well location shown on this plat was plotted from field notes of actual surveys made by me or under my supervision, and that the same is true to the best of my belief.

07/19/2019

Date of Survey
Signature and Seal of Professional Surveyor



Certificate Number

NEW MEXICO EAST
NAD 1927

| <u>SURFACE LOCATION (SHL)</u> | <u>UPPER MOST PERF. (UMP)</u> |
|-------------------------------|-------------------------------|
| X=723524 Y=414854 | X=723151 Y=414677 |
| LAT.: N 32.1384890 | LAT.: N 32.1380105 |
| LONG.: W 103.6111960 | LONG.: W 103.6124048 |

LOWER MOST PERF. (LMP)
BOTTOM HOLE LOCATION (BHL)
X=723102 Y=425037
LAT.: N 32.1664883
LONG.: W 103.6123401

District I
1625 N. French Dr., Hobbs, NM 88240
Phone: (575) 393-6161 Fax: (575) 393-0720

District II
811 S. First St., Artesia, NM 88210
Phone: (575) 748-1283 Fax: (575) 748-9720

District III
1000 Rio Brazos Road, Aztec, NM 87410
Phone: (505) 334-6178 Fax: (505) 334-6170

District IV
1220 S. St. Francis Dr., Santa Fe, NM 87505
Phone: (505) 476-3460 Fax: (505) 476-3462

State of New Mexico
Energy, Minerals & Natural Resources
Department
OIL CONSERVATION DIVISION
1220 South St. Francis Dr.
Santa Fe, NM 87505

FORM C-102

Revised August 1, 2011

Submit one copy to appropriate

District Office

☐ **AMENDED REPORT**

WELL LOCATION AND ACREAGE DEDICATION PLAT

| | | |
|--|--|--|
| ¹ API Number 30-025-51272 | ² Pool Code 97903 | ³ Pool Name WC-025 G-08 S253235G; Lower Bone Spring |
| ⁴ Property Code 324978 | ⁵ Property Name DAUNTLESS 7 FED | |
| ⁷ OGRID No. 7377 | ⁸ Operator Name EOG RESOURCES, INC. | |
| | ⁶ Well Number 521H | |
| | ⁹ Elevation 3492' | |

¹⁰Surface Location

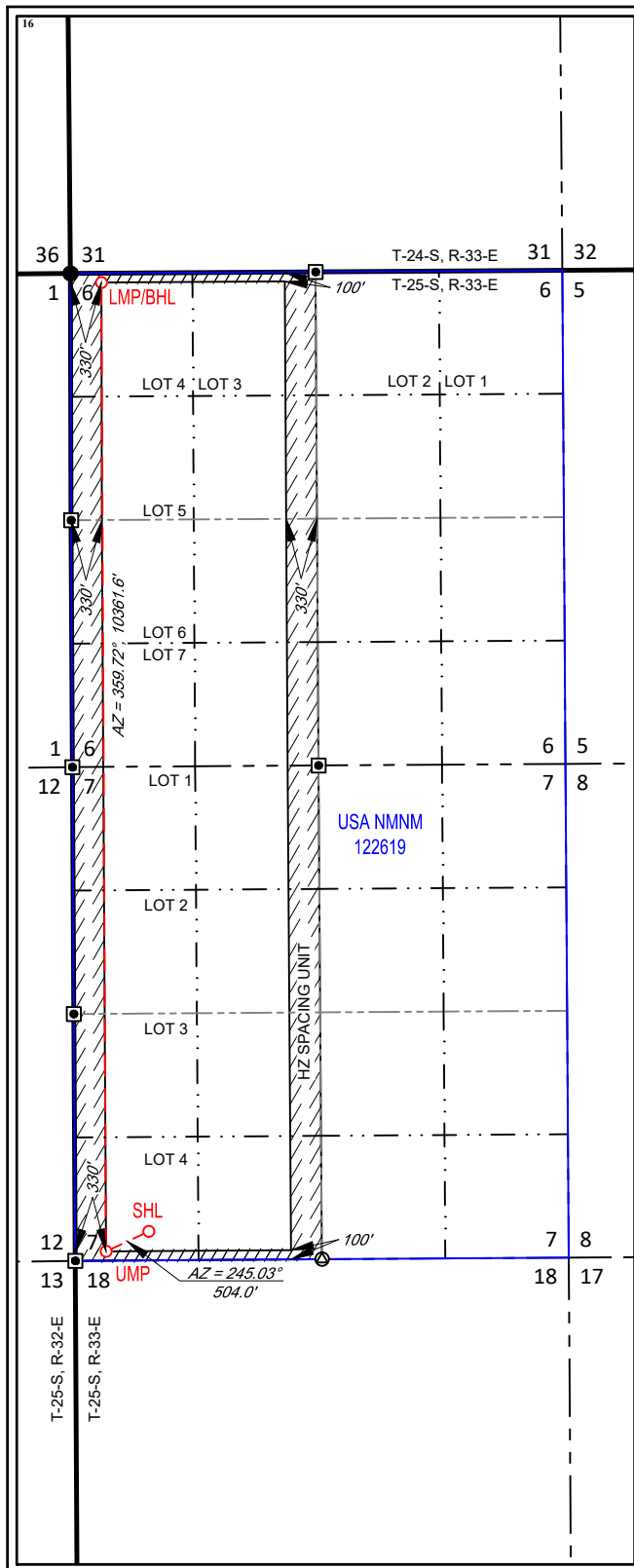
| UL or lot no. | Section | Township | Range | Lot Idn | Feet from the | North/South line | Feet from the | East/West line | County |
|---------------|---------|----------|-------|---------|---------------|------------------|---------------|----------------|--------|
| 4 | 7 | 25 | 33 | — | 310' | SOUTH | 788' | WEST | LEA |

¹¹Bottom Hole Location If Different From Surface

| UL or lot no. | Section | Township | Range | Lot Idn | Feet from the | North/South line | Feet from the | East/West line | County |
|---------------|---------|----------|-------|---------|---------------|------------------|---------------|----------------|--------|
| 4 | 6 | 25 | 33 | — | 100' | NORTH | 330' | WEST | LEA |

| | | | |
|--|-------------------------------|----------------------------------|-------------------------|
| ¹² Dedicated Acres 638.40 | ¹³ Joint or Infill | ¹⁴ Consolidation Code | ¹⁵ Order No. |
|--|-------------------------------|----------------------------------|-------------------------|

No allowable will be assigned to this completion until all interests have been consolidated or a non-standard unit has been approved by the division.



NEW MEXICO EAST
NAD 1983
SURFACE LOCATION (SHL)
310' FSL - SEC. 7
788' FWL - SEC. 7
X=762954 Y=414935
LAT.: N 32.1387102
LONG.: W 103.6173427

UPPER MOST PERF. (UMP)
100' FSL - SEC. 7
330' FWL - SEC. 7
X=762497 Y=414722
LAT.: N 32.1381337
LONG.: W 103.6188231

LOWER MOST PERF. (LMP)/
BOTTOM HOLE LOCATION (BHL)
100' FNL - SEC. 6
330' FWL - SEC. 6
X=762447 Y=425084
LAT.: N 32.1666154
LONG.: W 103.6187627

¹⁷OPERATOR CERTIFICATION

I hereby certify that the information contained herein is true and complete to the best of my knowledge and belief, and that this organization either owns a working interest or unleased mineral interest in the land including the proposed bottom hole location or has a right to drill this well at this location pursuant to a contract with an owner of such a mineral or working interest, or to a voluntary pooling agreement or a compulsory pooling order heretofore entered by the division.

Star L Harrell 4/10/2023
Signature Date

Star L Harrell
Printed Name

star_harrell@eogresources.com

¹⁸SURVEYOR CERTIFICATION

I hereby certify that the well location shown on this plat was plotted from field notes of actual surveys made by me or under my supervision, and that the same is true to the best of my belief.

07/19/2019

Date of Survey
Signature and Seal of Professional Surveyor



Certificate Number

NEW MEXICO EAST
NAD 1927

| <u>SURFACE LOCATION (SHL)</u> | <u>UPPER MOST PERF. (UMP)</u> |
|-------------------------------|-------------------------------|
| X=721768 Y=414877 | X=721311 Y=414664 |
| LAT.: N 32.1385858 | LAT.: N 32.1380093 |
| LONG.: W 103.6168683 | LONG.: W 103.6183489 |

LOWER MOST PERF. (LMP)
BOTTOM HOLE LOCATION (BHL)
X=721262 Y=425025
LAT.: N 32.1664912
LONG.: W 103.6182867

X=721311 Y=414664
LAT.: N 32.1380093
LONG.: W 103.6183489

District I
1625 N. French Dr., Hobbs, NM 88240
Phone: (575) 393-6161 Fax: (575) 393-0720
District II
811 S. First St., Artesia, NM 88210
Phone: (575) 748-1283 Fax: (575) 748-9720
District III
1000 Rio Brazos Road, Aztec, NM 87410
Phone: (505) 334-6178 Fax: (505) 334-6170
District IV
1220 S. St. Francis Dr., Santa Fe, NM 87505
Phone: (505) 476-3460 Fax: (505) 476-3462

State of New Mexico
Energy, Minerals & Natural Resources
Department
OIL CONSERVATION DIVISION
1220 South St. Francis Dr.
Santa Fe, NM 87505

FORM C-102
Revised August 1, 2011
Submit one copy to appropriate
District Office
☐ AMENDED REPORT

WELL LOCATION AND ACREAGE DEDICATION PLAT

| | | | | | | | | | |
|--|--------------|---|-------------|---|-----------------------|---------------------------|------------------------|----------------------------------|---------------|
| ¹ API Number 30-025-51270 | | ² Pool Code 97903 | | ³ Pool Name WC-025 G-08 S253235G; Lower Bone Spring | | | | | |
| ⁴ Property Code 324978 | | ⁵ Property Name DAUNTLESS 7 FED | | | | | | ⁶ Well Number 583H | |
| ⁷ OGRID No. 7377 | | ⁸ Operator Name EOG RESOURCES, INC. | | | | | | ⁹ Elevation 3493' | |
| ¹⁰ Surface Location | | | | | | | | | |
| UL or lot no. N | Section 7 | Township 25 | Range 33 | Lot Idn - | Feet from the 274' | North/South line SOUTH | Feet from the 2504' | East/West line WEST | County LEA |
| ¹¹ Bottom Hole Location If Different From Surface | | | | | | | | | |
| UL or lot no. 3 | Section 6 | Township 25 | Range 33 | Lot Idn - | Feet from the 100' | North/South line NORTH | Feet from the 1470' | East/West line WEST | County LEA |
| ¹² Dedicated Acres 638.40 | | ¹³ Joint or Infill | | ¹⁴ Consolidation Code | | ¹⁵ Order No. | | | |

No allowable will be assigned to this completion until all interests have been consolidated or a non-standard unit has been approved by the division.

| | | | | | | |
|--|--|---|--|--|--|--|
| | <p>NEW MEXICO EAST NAD 1983</p> <p><u>SURFACE LOCATION (SHL)</u></p> <p>274' FSL - SEC. 7 2504' FWL - SEC. 7 X=764670 Y=414911 LAT.: N 32.1386133 LONG.: W 103.6117994</p> <p><u>UPPER MOST PERF. (UMP)</u></p> <p>100' FSL - SEC. 7 1470' FWL - SEC. 7 X=763637 Y=414730 LAT.: N 32.1381345 LONG.: W 103.6151403</p> <p><u>LOWER MOST PERF. (LMP)/ BOTTOM HOLE LOCATION (BHL)</u></p> <p>100' FNL - SEC. 6 1470' FWL - SEC. 6 X=763587 Y=425091 LAT.: N 32.1666136 LONG.: W 103.6150781</p> | <p>¹⁷OPERATOR CERTIFICATION</p> <p>I hereby certify that the information contained herein is true and complete to the best of my knowledge and belief, and that this organization either owns a working interest or unleased mineral interest in the land including the proposed bottom hole location or has a right to drill this well at this location pursuant to a contract with an owner of such a mineral or working interest, or to a voluntary pooling agreement or a compulsory pooling order heretofore entered by the division.</p> <p><i>Star L Harrell</i> 4/10/2023 Signature Date</p> <p>Star L Harrell Printed Name</p> <p>star_harrell@eogresources.com E-mail Address</p> <p>¹⁸SURVEYOR CERTIFICATION</p> <p>I hereby certify that the well location shown on this plat was plotted from field notes of actual surveys made by me or under my supervision, and that the same is true to the best of my belief.</p> <p>07/19/2019 Date of Survey</p> <p>Signature and Seal of Professional Surveyor</p> <p></p> <p>Certificate Number</p> <p>NEW MEXICO EAST NAD 1927</p> <table><tr><td><u>SURFACE LOCATION (SHL)</u> X=723484 Y=414853 LAT.: N 32.1384899 LONG.: W 103.6113252</td><td><u>UPPER MOST PERF. (UMP)</u> X=722451 Y=414672 LAT.: N 32.1380101 LONG.: W 103.6146661</td></tr><tr><td><u>LOWER MOST PERF. (LMP)/ BOTTOM HOLE LOCATION (BHL)</u> X=722402 Y=425032 LAT.: N 32.1664894 LONG.: W 103.6146022</td><td></td></tr></table> | <u>SURFACE LOCATION (SHL)</u> X=723484 Y=414853 LAT.: N 32.1384899 LONG.: W 103.6113252 | <u>UPPER MOST PERF. (UMP)</u> X=722451 Y=414672 LAT.: N 32.1380101 LONG.: W 103.6146661 | <u>LOWER MOST PERF. (LMP)/ BOTTOM HOLE LOCATION (BHL)</u> X=722402 Y=425032 LAT.: N 32.1664894 LONG.: W 103.6146022 | |
| | <u>SURFACE LOCATION (SHL)</u> X=723484 Y=414853 LAT.: N 32.1384899 LONG.: W 103.6113252 | <u>UPPER MOST PERF. (UMP)</u> X=722451 Y=414672 LAT.: N 32.1380101 LONG.: W 103.6146661 | | | | |
| <u>LOWER MOST PERF. (LMP)/ BOTTOM HOLE LOCATION (BHL)</u> X=722402 Y=425032 LAT.: N 32.1664894 LONG.: W 103.6146022 | | | | | | |

District I
1625 N. French Dr., Hobbs, NM 88240
Phone: (575) 393-6161 Fax: (575) 393-0720
District II
811 S. First St., Artesia, NM 88210
Phone: (575) 748-1283 Fax: (575) 748-9720
District III
1000 Rio Brazos Road, Aztec, NM 87410
Phone: (505) 334-6178 Fax: (505) 334-6170
District IV
1220 S. St. Francis Dr., Santa Fe, NM 87505
Phone: (505) 476-3460 Fax: (505) 476-3462

State of New Mexico
Energy, Minerals & Natural Resources
Department
OIL CONSERVATION DIVISION
1220 South St. Francis Dr.
Santa Fe, NM 87505

FORM C-102

Revised August 1, 2011

Submit one copy to appropriate

District Office

☐ AMENDED REPORT

WELL LOCATION AND ACREAGE DEDICATION PLAT

| | | | |
|---|--|--|---|
| ¹ API Number 30-025- 51273 | | ² Pool Code 97903 | ³ Pool Name WC-025 G-08 S253235G; LWR BONE SPRIN |
| ⁴ Property Code 324978 | ⁵ Property Name DAUNTLESS 7 FED | | ⁶ Well Number 503H |
| ⁷ OGRID No. 7377 | ⁸ Operator Name EOG RESOURCES, INC. | | ⁹ Elevation 3493' |

¹⁰Surface Location

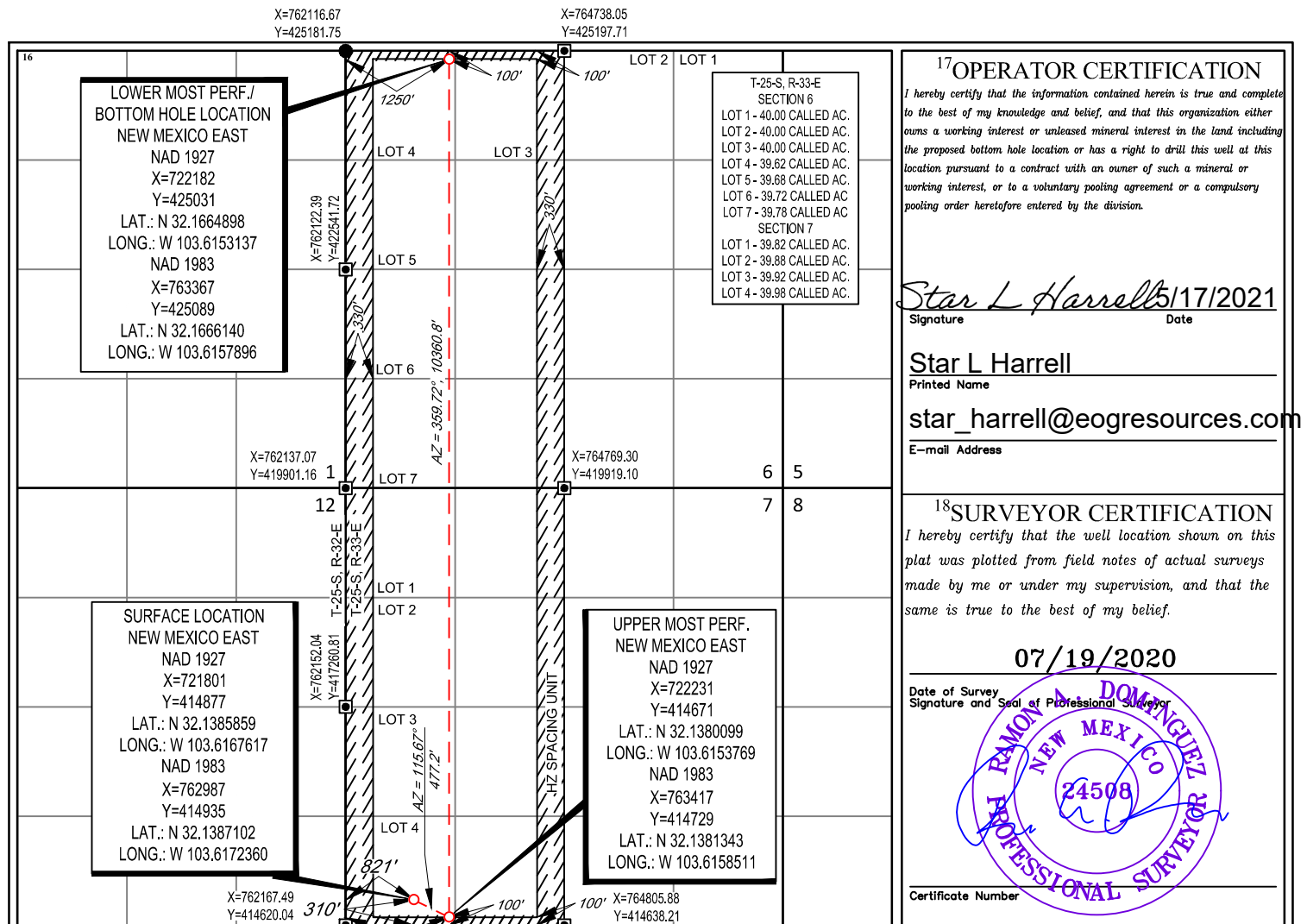
| UL or lot no. | Section | Township | Range | Lot Idn | Feet from the | North/South line | Feet from the | East/West line | County |
|---------------|---------|----------|-------|---------|---------------|------------------|---------------|----------------|--------|
| 4 | 7 | 25-S | 33-E | - | 310' | SOUTH | 821' | WEST | LEA |

¹¹Bottom Hole Location If Different From Surface

| UL or lot no. | Section | Township | Range | Lot Idn | Feet from the | North/South line | Feet from the | East/West line | County |
|---------------|---------|----------|-------|---------|---------------|------------------|---------------|----------------|--------|
| 4 | 6 | 25-S | 33-E | - | 100' | NORTH | 1250' | WEST | LEA |

| | | | |
|--|-------------------------------|----------------------------------|-------------------------|
| ¹² Dedicated Acres 638.40 | ¹³ Joint or Infill | ¹⁴ Consolidation Code | ¹⁵ Order No. |
|--|-------------------------------|----------------------------------|-------------------------|

No allowable will be assigned to this completion until all interests have been consolidated or a non-standard unit has been approved by the division.



From: [Lisa Youngblood](#)
To: [McClure, Dean, EMNRD](#)
Subject: RE: [EXTERNAL] Infill Wells - EOG
Date: Monday, June 19, 2023 2:57:04 PM
Attachments: [503H.pdf](#)

Hi Mr. McClure,

I apologize, I believe that well is going through the process of getting sundried to the 512H. Please see the 503H C-102 attached.

Thank you,

Lisa Youngblood

Regulatory Specialist



5509 Champions Drive | Midland, TX 79706
Building 1, Room 3003
Direct Line (432) 247-6331
Cell Phone (432) 241-1259
Lisa_youngblood@eogresources.com

From: McClure, Dean, EMNRD <Dean.McClure@emnrd.nm.gov>
Sent: Friday, June 16, 2023 3:09 PM
To: Lisa Youngblood <Lisa_Youngblood@eogresources.com>
Subject: RE: [EXTERNAL] Infill Wells - EOG

CAUTION: This email originated from outside of the organization. Do not click links or open attachments unless you recognize the sender and know the content is safe.

Upon further review; with the consideration that the API number below is for the 30-025-51273 DAUNTLESS 7 FEDERAL #503H [324978], I am speculative that the #503H may be the well intended to be included below. If so, please provide me an amended form C-103 with the well number corrected including the C-102 for the #503H.

Dean McClure
Petroleum Engineer, Oil Conservation Division
New Mexico Energy, Minerals and Natural Resources Department
(505) 469-8211

From: McClure, Dean, EMNRD
Sent: Friday, June 16, 2023 1:58 PM
To: Lisa Youngblood <Lisa_Youngblood@eogresources.com>
Subject: RE: [EXTERNAL] Infill Wells - EOG

Ms. Youngblood,

Please provide the C-102 for the Dauntless 7 Fed #512H (30-025-51273)

Dean McClure
Petroleum Engineer, Oil Conservation Division
New Mexico Energy, Minerals and Natural Resources Department
(505) 469-8211

From: Lisa Youngblood <Lisa_Youngblood@eogresources.com>

Sent: Thursday, June 15, 2023 3:23 PM

To: McClure, Dean, EMNRD <Dean.McClure@emnrd.nm.gov>

Cc: Engineer, OCD, EMNRD <OCD.Engineer@emnrd.nm.gov>

Subject: [EXTERNAL] Infill Wells - EOG

CAUTION: This email originated outside of our organization. Exercise caution prior to clicking on links or opening attachments.

Good Afternoon Mr. McClure,

I have submitted two C-103Zs, under the following action ids to add the following infill wells to the approved commingle applications.

| Action ID | Commingle # | Wells |
|-----------|-------------|--|
| 228878 | PLC-885 | Dauntless 7 Fed 215H, 512H-515H, 521H,583H |
| 228890 | PLC-883 | Ruthless 11 Fed Com 709H-713H, 727H-729H, 745H, 748H, 754H, 757H, 758H |

Thank you,

Lisa Youngblood

Regulatory Specialist



5509 Champions Drive | Midland, TX 79706

Building 1, Room 3003

Direct Line (432) 247-6331

Cell Phone (432) 241-1259

Lisa_youngblood@eogresources.com

District I
1625 N. French Dr., Hobbs, NM 88240
Phone:(575) 393-6161 Fax:(575) 393-0720
District II
811 S. First St., Artesia, NM 88210
Phone:(575) 748-1283 Fax:(575) 748-9720
District III
1000 Rio Brazos Rd., Aztec, NM 87410
Phone:(505) 334-6178 Fax:(505) 334-6170
District IV
1220 S. St Francis Dr., Santa Fe, NM 87505
Phone:(505) 476-3470 Fax:(505) 476-3462

State of New Mexico
Energy, Minerals and Natural Resources
Oil Conservation Division
1220 S. St Francis Dr.
Santa Fe, NM 87505

COMMENTS

Action 233294

COMMENTS

| | |
|--|--|
| Operator: EOG RESOURCES INC P.O. Box 2267 Midland, TX 79702 | OGRID: 7377 |
| | Action Number: 233294 |
| | Action Type: [IM-SD] Admin Order Support Doc (ENG) (IM-AAO) |

COMMENTS

| Created By | Comment | Comment Date |
|------------|----------------------------------|--------------|
| dmcclure | Approved under Action ID: 228878 | 6/27/2023 |

District I
1625 N. French Dr., Hobbs, NM 88240
Phone:(575) 393-6161 Fax:(575) 393-0720
District II
811 S. First St., Artesia, NM 88210
Phone:(575) 748-1283 Fax:(575) 748-9720
District III
1000 Rio Brazos Rd., Aztec, NM 87410
Phone:(505) 334-6178 Fax:(505) 334-6170
District IV
1220 S. St Francis Dr., Santa Fe, NM 87505
Phone:(505) 476-3470 Fax:(505) 476-3462

State of New Mexico
Energy, Minerals and Natural Resources
Oil Conservation Division
1220 S. St Francis Dr.
Santa Fe, NM 87505

CONDITIONS

Action 233294

CONDITIONS

| | |
|--|--|
| Operator: EOG RESOURCES INC P.O. Box 2267 Midland, TX 79702 | OGRID: 7377 |
| | Action Number: 233294 |
| | Action Type: [IM-SD] Admin Order Support Doc (ENG) (IM-AAO) |

CONDITIONS

| Created By | Condition | Condition Date |
|------------|--|----------------|
| dmcclure | Please review the content of the order to ensure you are familiar with the authorities granted and any conditions of approval. If you have any questions regarding this matter, please contact me. | 6/27/2023 |