

Revised March 23, 2017

ID NO. 225866

NSP - 2160

RECEIVED:	REVIEWER:	TYPE:	APP NO: pLEL2316448382
-----------	-----------	-------	------------------------

ABOVE THIS TABLE FOR OCD DIVISION USE ONLY

**NEW MEXICO OIL CONSERVATION DIVISION**  
 - Geological & Engineering Bureau -  
 1220 South St. Francis Drive, Santa Fe, NM 87505

**ADMINISTRATIVE APPLICATION CHECKLIST**

THIS CHECKLIST IS MANDATORY FOR ALL ADMINISTRATIVE APPLICATIONS FOR EXCEPTIONS TO DIVISION RULES AND REGULATIONS WHICH REQUIRE PROCESSING AT THE DIVISION LEVEL IN SANTA FE

**Applicant:** EOG Resources Inc. **OGRID Number:** 7377  
**Well Name:** Silver Train wells (multiple) **API:** multiple  
**Pool:** Pitchfork Ranch; Wolfcamp, South Pool **Pool Code:** 96994

**SUBMIT ACCURATE AND COMPLETE INFORMATION REQUIRED TO PROCESS THE TYPE OF APPLICATION INDICATED BELOW**

- 1) **TYPE OF APPLICATION:** Check those which apply for [A]  
 A. Location – Spacing Unit – Simultaneous Dedication  
☐ NSL ☐ NSP (PROJECT AREA) ☒ NSP (PRORATION UNIT) ☐ SD
- B. Check one only for [ I ] or [ II ]  
 [ I ] Commingling – Storage – Measurement  
☐ DHC ☐ CTB ☐ PLC ☐ PC ☐ OLS ☐ OLM  
 [ II ] Injection – Disposal – Pressure Increase – Enhanced Oil Recovery  
☐ WFX ☐ PMX ☐ SWD ☐ IPI ☐ EOR ☐ PPR
- 2) **NOTIFICATION REQUIRED TO:** Check those which apply.  
 A. ☒ Offset operators or lease holders  
 B. ☒ Royalty, overriding royalty owners, revenue owners  
 C. ☐ Application requires published notice  
 D. ☒ Notification and/or concurrent approval by SLO  
 E. ☒ Notification and/or concurrent approval by BLM  
 F. ☐ Surface owner  
 G. ☒ For all of the above, proof of notification or publication is attached, and/or,  
 H. ☐ No notice required

**FOR OCD ONLY**

- ☐ Notice Complete  
☐ Application Content Complete

- 3) **CERTIFICATION:** I hereby certify that the information submitted with this application for administrative approval is **accurate** and **complete** to the best of my knowledge. I also understand that **no action** will be taken on this application until the required information and notifications are submitted to the Division.

**Note: Statement must be completed by an individual with managerial and/or supervisory capacity.**

Lisa Youngblood

Print or Type Name

Lisa Youngblood  
 Signature

6/13/23

Date

432-247-6331

Phone Number

lisa\_youngblood@eogresources.com

e-mail Address



Lisa Youngblood  
Phone: (432) 247-6331  
Email: lisa\_youngblood@eogresources.com

June 13, 2023

**VIA ONLINE FILING**

Dylan Fuge, Acting Director  
Oil Conservation Division  
New Mexico Department of Energy, Minerals, and Natural Resources  
1220 South St. Francis Drive  
Santa Fe, New Mexico 87505

**Re: AMENDED Application of EOG Resources, Inc. for administrative approval of a 960-acre non-standard horizontal spacing unit in the Pitchfork Ranch; Wolfcamp, South Pool (96994) comprised of the S/2 of Section 8 and all of Section 17, Township 25 South, Range 34 East, NMPM, Lea County, New Mexico.**

Dear Director Fuge,

Pursuant to 19.15.16.15(B)(5) NMAC, EOG Resources, Inc. ("EOG") (OGRID No. 7377) seeks administrative approval of a non-standard 960-acre horizontal spacing unit comprised of the S/2 of Section 8 and all of Section 17, Township 25 South, Range 34 East, NMPM, Lea County, New Mexico. The proposed non-standard spacing unit will be dedicated to the following wells:

- Silver Train 17 Fed Com 701H (API No. 30-025-51037)
- Silver Train 17 Fed Com 702H (API No. 30-025-51038)
- Silver Train 17 Fed Com 713H (API No. 30-025-51042)
- Silver Train 17 Fed Com 714H (API No. 30-025-51043)
- Silver Train 17 Fed Com 715H (API No. 30-025-51040)
- Silver Train 17 Fed Com 716H (API No. 30-025-51537)
- Silver Train 17 Fed Com 717H (API No. 30-025-51539)
- Silver Train 17 Fed Com 718H (API No. 30-025-51540)
- Silver Train 17 Fed Com 721H (API No. 30-025-51041)
- Silver Train 17 Fed Com 724H (API No. 30-025-51536)
- Silver Train 17 Fed Com 728H (API No. 30-025-51538)
- Silver Train 17 Fed Com 729H (API No. 30-025-51039)

The Division has placed all wells into the Bobcat Draw; Upper Wolfcamp Pool (98094). The proposed wells have not yet been drilled. The acreage included in the non-standard spacing unit will be the subject of a single Communitization Agreement.

EOG seeks administrative approval of a non-standard spacing unit to develop the acreage as a single communitized area. Doing so will allow EOG to efficiently locate surface facilities, reduce surface disturbance, consolidate roads, tanks and pipelines, and promote effective well spacing, thereby promoting conservation and preventing waste. Division Rules contemplate and encourage oil and gas development, where possible, in enlarged areas of common ownership to minimize surface disturbance and to promote efficient well spacing, *see*, e.g., 19.15.16.7.P NMAC; 19.15.16.15.B(8) NMAC; 19.15.16.15.C(7) NMAC, and authorize administrative approval of such a request, *see* 19.15.16.15(B)(5) NMAC.

**Exhibit A** is a map showing the proposed non-standard spacing unit, the subject leases, and the proposed wells.

**Exhibit B** is a copy of the Well Location and Acreage Dedication Plat (C-102) for each of the wells within the proposed non-standard spacing unit.

**Exhibit C** is a lease map showing the notice tracts for the proposed non-standard spacing unit.

**Exhibit D** is a cross section exhibit showing the Wolfcamp target for the subject wells.

**Exhibit E** is a list of parties affected by this application. Affected parties were provided a copy of the application with all attachments by certified mail, along with notice that any objection must be filed in writing with the Division within 20 days from the date the Division receives the application. Royalty owners, including the BLM and the State Land Office, were provided a copy of the application. A copy of the notice letter, tracking information, and proof of mailing is included in **Exhibit E**.

Thank you for your attention to this matter.

Very truly yours,



Lisa Youngblood  
Regulatory Specialist

Proposed Non-Standard Horizontal Spacing Unit  
Silver Train 17 Fed Com: S2 of Sec. 8 & All of Sec. 17-25S-34E  
Lease Summary

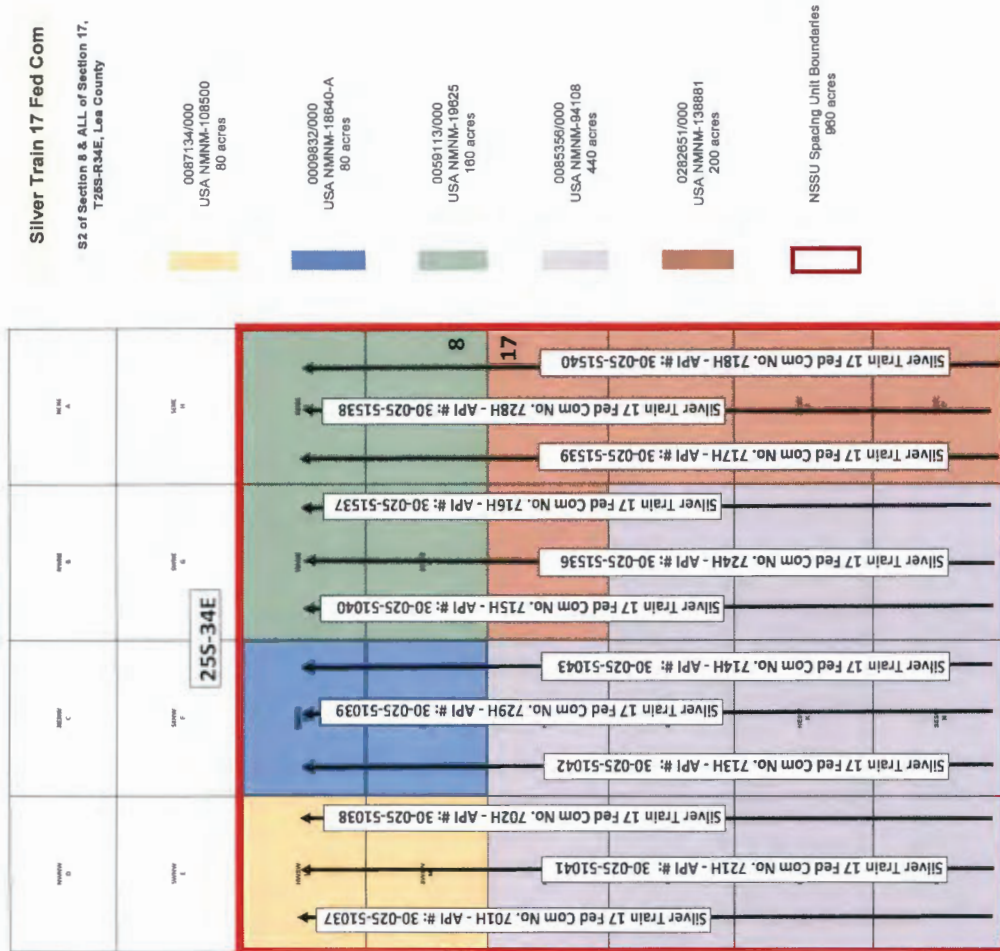


Exhibit A



District I  
1625 N. French Dr., Hobbs, NM 88240  
Phone: (575) 393-6161 Fax: (575) 393-0720  
District II  
811 S. First St., Artesia, NM 88210  
Phone: (575) 748-1283 Fax: (575) 748-9720  
District III  
1000 Rio Brazos Road, Aztec, NM 87410  
Phone: (505) 334-6178 Fax: (505) 334-6170  
District IV  
1220 S. St. Francis Dr., Santa Fe, NM 87505  
Phone: (505) 476-3460 Fax: (505) 476-3462

State of New Mexico  
Energy, Minerals & Natural Resources  
Department  
OIL CONSERVATION DIVISION  
1220 South St. Francis Dr.  
Santa Fe, NM 87505

FORM C-102

Revised August 1, 2011

Submit one copy to appropriate

District Office

☐ AMENDED REPORT

## WELL LOCATION AND ACREAGE DEDICATION PLAT

<sup>1</sup> API Number <b>30-025-51037</b>	<sup>2</sup> Pool Code <b>96994</b>	<sup>3</sup> Pool Name <b>PITCHFORK RANCH; WOLFCAMP, SOUTH</b>
<sup>4</sup> Property Code <b>333757</b>	<sup>5</sup> Property Name <b>SILVER TRAIN 17 FED COM</b>	<sup>6</sup> Well Number <b>701H</b>
<sup>7</sup> OGRID No. <b>7377</b>	<sup>8</sup> Operator Name <b>EOG RESOURCES, INC.</b>	<sup>9</sup> Elevation <b>3343'</b>

<sup>10</sup>Surface Location

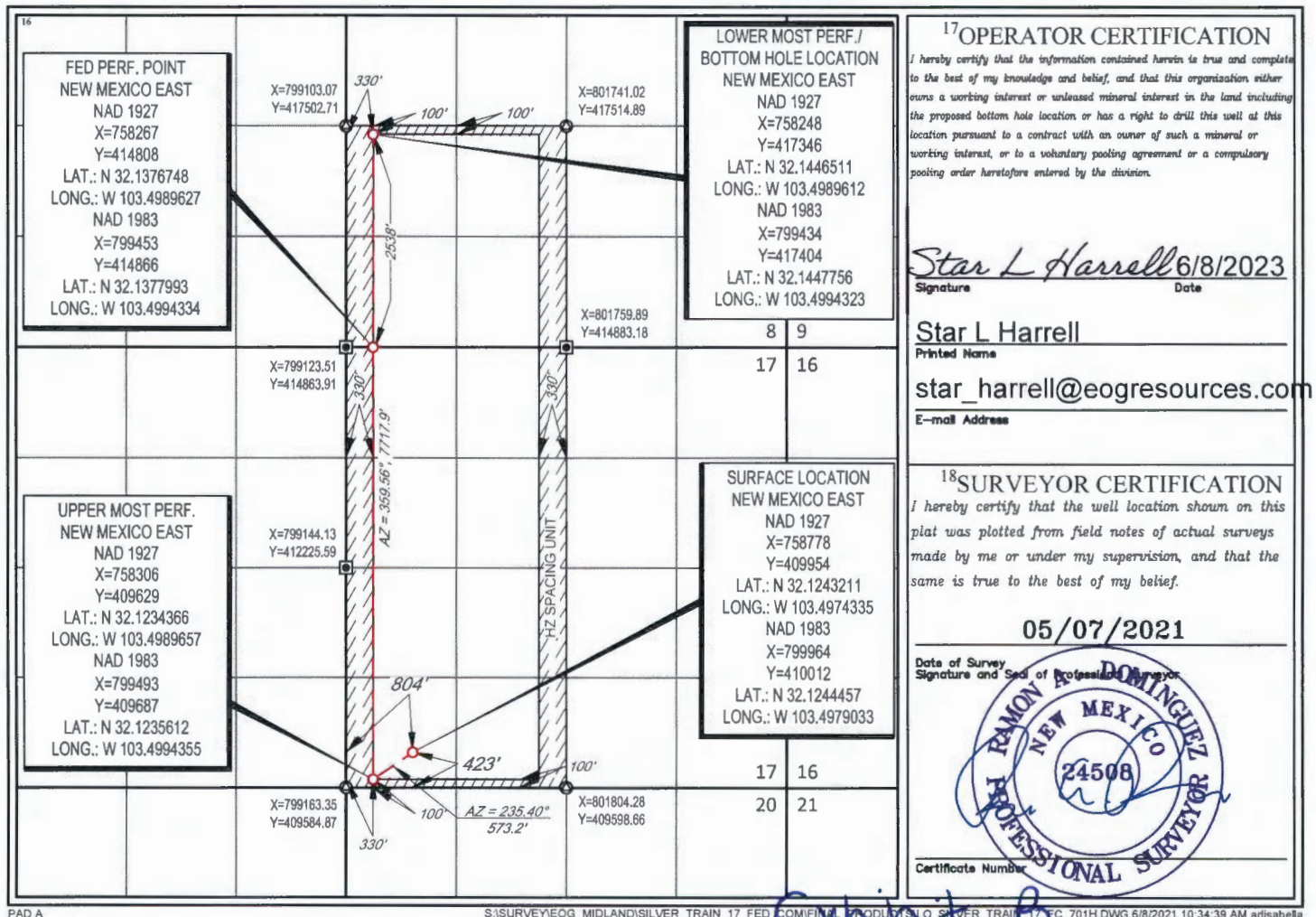
UL or lot no.	Section	Township	Range	Lot Idn	Feet from the	North/South line	Feet from the	East/West line	County
<b>M</b>	<b>17</b>	<b>25-S</b>	<b>34-E</b>	<b>-</b>	<b>423'</b>	<b>SOUTH</b>	<b>804'</b>	<b>WEST</b>	<b>LEA</b>

<sup>11</sup>Bottom Hole Location If Different From Surface

UL or lot no.	Section	Township	Range	Lot Idn	Feet from the	North/South line	Feet from the	East/West line	County
<b>L</b>	<b>8</b>	<b>25-S</b>	<b>34-E</b>	<b>-</b>	<b>2538'</b>	<b>SOUTH</b>	<b>330'</b>	<b>WEST</b>	<b>LEA</b>

<sup>12</sup> Dedicated Acres <b>480</b>	<sup>13</sup> Joint or Infill	<sup>14</sup> Consolidation Code	<sup>15</sup> Order No.
---	-------------------------------	----------------------------------	-------------------------

No allowable will be assigned to this completion until all interests have been consolidated or a non-standard unit has been approved by the division.



PAD A

S:\SURVEY\EOG\_MIDLAND\SILVER\_TRAIN\_17\_FED\_COM\PROD\LO\_SILVER\_TRAIN\_17\_FED\_COM\_701H.DWG 6/8/2021 10:34:39 AM adisabell



**District I**  
1625 N. French Dr., Hobbs, NM 88240  
Phone: (575) 393-6161 Fax: (575) 393-0720

**District II**  
811 S. First St., Artesia, NM 88210  
Phone: (575) 748-1283 Fax: (575) 748-9720

**District III**  
1000 Rio Brazos Road, Aztec, NM 87410  
Phone: (505) 334-6178 Fax: (505) 334-6170

**District IV**  
1220 S. St. Francis Dr., Santa Fe, NM 87505  
Phone: (505) 476-3460 Fax: (505) 476-3462

State of New Mexico  
Energy, Minerals & Natural Resources  
Department  
OIL CONSERVATION DIVISION  
1220 South St. Francis Dr.  
Santa Fe, NM 87505

FORM C-102

Revised August 1, 2011

Submit one copy to appropriate

District Office

☐ AMENDED REPORT

## WELL LOCATION AND ACREAGE DEDICATION PLAT

<sup>1</sup> API Number <b>30-025-51038</b>		<sup>2</sup> Pool Code 96994		<sup>3</sup> Pool Name PITCHFORK RANCH; WOLFCAMP, SOUTH	
<sup>4</sup> Property Code 333757		<sup>5</sup> Property Name SILVER TRAIN 17 FED COM			<sup>6</sup> Well Number 702H
<sup>7</sup> GRID No. 7377		<sup>8</sup> Operator Name EOG RESOURCES, INC.			<sup>9</sup> Elevation 3343'

<sup>10</sup>Surface Location

UL or lot no.	Section	Township	Range	Lot Idn	Feet from the	North/South line	Feet from the	East/West line	County
<b>M</b>	<b>17</b>	<b>25-S</b>	<b>34-E</b>	—	<b>423'</b>	<b>SOUTH</b>	<b>834'</b>	<b>WEST</b>	<b>LEA</b>

<sup>11</sup>Bottom Hole Location If Different From Surface

UL or lot no.	Section	Township	Range	Lot Idn	Feet from the	North/South line	Feet from the	East/West line	County
<b>L</b>	<b>8</b>	<b>25-S</b>	<b>34-E</b>	—	<b>2536'</b>	<b>SOUTH</b>	<b>990'</b>	<b>WEST</b>	<b>LEA</b>

<sup>12</sup> Dedicated Acres <b>480</b>	<sup>13</sup> Joint or Infill	<sup>14</sup> Consolidation Code	<sup>15</sup> Order No.
---	-------------------------------	----------------------------------	-------------------------

No allowable will be assigned to this completion until all interests have been consolidated or a non-standard unit has been approved by the division.

<b>FED PERF. POINT NEW MEXICO EAST NAD 1927 X=758927 Y=414813 LAT.: N 32.1376740 LONG.: W 103.4968306 NAD 1983 X=800113 Y=414871 LAT.: N 32.1377985 LONG.: W 103.4973012</b>				<b>LOWER MOST PERF./ BOTTOM HOLE LOCATION NEW MEXICO EAST NAD 1927 X=758908 Y=417349 LAT.: N 32.1446454 LONG.: W 103.4968290 NAD 1983 X=800094 Y=417407 LAT.: N 32.1447699 LONG.: W 103.4973000</b>		<b><sup>17</sup>OPERATOR CERTIFICATION</b> I hereby certify that the information contained herein is true and complete to the best of my knowledge and belief, and that this organization either owns a working interest or unleased mineral interest in the land including the proposed bottom hole location or has a right to drill this well at this location pursuant to a contract with an owner of such a mineral or working interest, or to a voluntary pooling agreement or a compulsory pooling order heretofore entered by the division.  <i>Star L Harrell</i> 6/8/2023 Signature Date <b>Star L Harrell</b> Printed Name star_harrell@eogresources.com E-mail Address	
<b>SURFACE LOCATION NEW MEXICO EAST NAD 1927 X=758808 Y=409954 LAT.: N 32.1243207 LONG.: W 103.4973366 NAD 1983 X=799994 Y=410012 LAT.: N 32.1244453 LONG.: W 103.4978064</b>				<b>UPPER MOST PERF. NEW MEXICO EAST NAD 1927 X=758966 Y=409632 LAT.: N 32.1234320 LONG.: W 103.4968340 NAD 1983 X=800153 Y=409690 LAT.: N 32.1235566 LONG.: W 103.4973036</b>		<b><sup>18</sup>SURVEYOR CERTIFICATION</b> I hereby certify that the well location shown on this plat was plotted from field notes of actual surveys made by me or under my supervision, and that the same is true to the best of my belief.  05/07/2021 Date of Survey Signature and Seal of Professional Surveyor  Certificate Number	

30-025-51042		Pool Code 96994	Pool Name PITCHFORK RANCH; WOLFCAMP, SOUTH
Property Code 333757	Property Name SILVER TRAIN 17 FED COM		Well Number 713H
OGRID No. 7377	Operator Name EOG RESOURCES, INC.		Elevation 3342'

## Surface Location

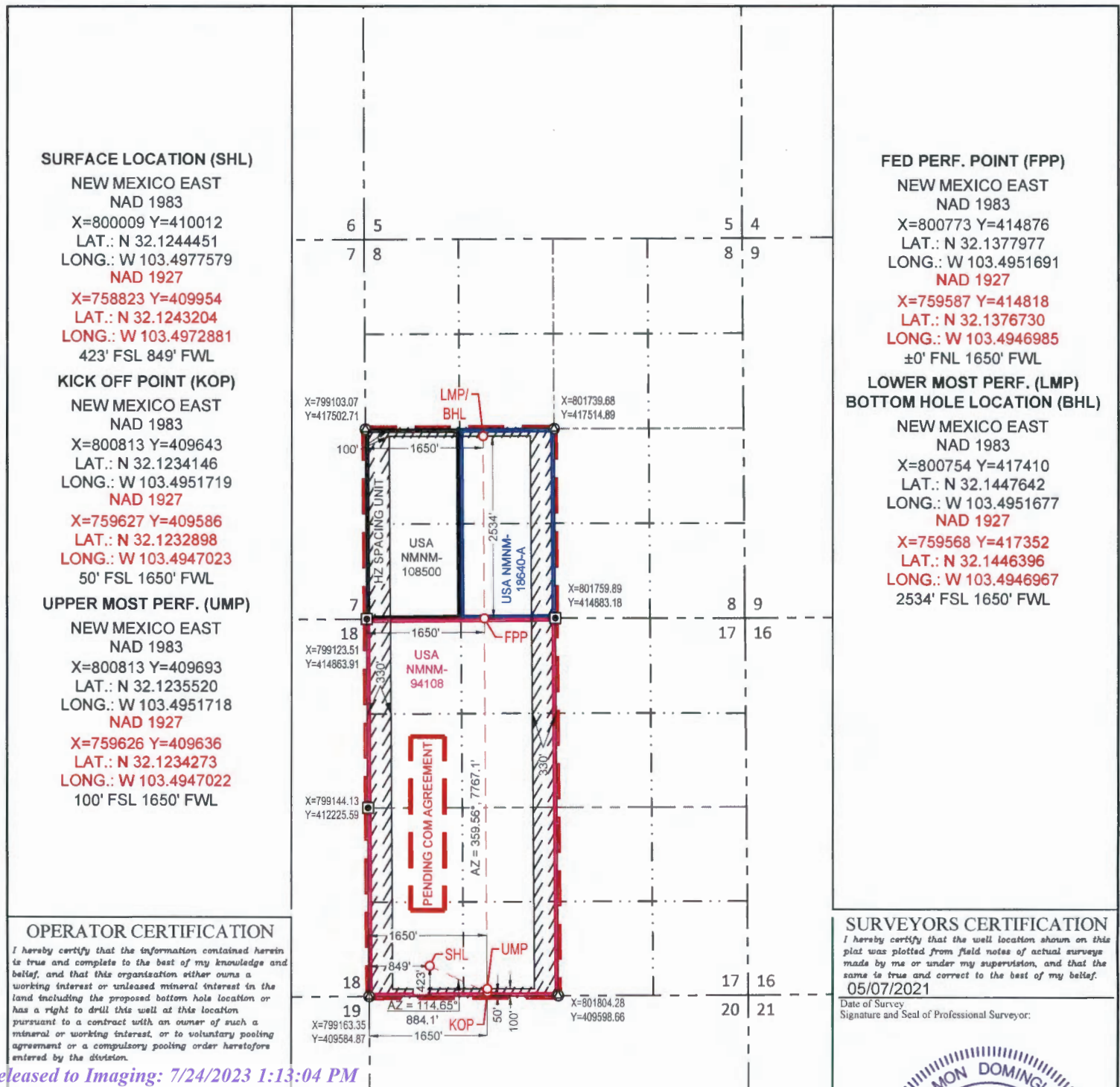
UL or lot no.	Section	Township	Range	Lot Idn	Feet from the	North/South line	Feet from the	East/West line	County
M	17	25-S	34-E	-	423'	SOUTH	849'	WEST	LEA

## Bottom Hole Location If Different From Surface

UL or lot no.	Section	Township	Range	Lot Idn	Feet from the	North/South line	Feet from the	East/West line	County
K	8	25-S	34-E	-	2534'	SOUTH	1650'	WEST	LEA

Dedicated Acres	Joint or Infill	Consolidated Code	Order No.
480			PENDING COM AGREEMENT

No allowable will be assigned to this completion until all interests have been consolidated or a non-standard unit has been approved by the division.





30-025-51043		Pool Code 96994	Pool Name PITCHFORK RANCH; WOLFCAMP, SOUTH
Property Code 333757	Property Name SILVER TRAIN 17 FED COM		Well Number 714H
OGRID No. 7377	Operator Name EOG RESOURCES, INC.		Elevation 3337'

## Surface Location

UL or lot no.	Section	Township	Range	Lot Idn	Feet from the	North/South line	Feet from the	East/West line	County
M	17	25-S	34-E	-	987'	SOUTH	1116'	WEST	LEA

## Bottom Hole Location If Different From Surface

UL or lot no.	Section	Township	Range	Lot Idn	Feet from the	North/South line	Feet from the	East/West line	County
K	8	25-S	34-E	-	2533'	SOUTH	2308'	WEST	LEA
Dedicated Acres 480	Joint or Infill	Consolidated Code	Order No. <b>PENDING COM AGREEMENT</b>						

No allowable will be assigned to this completion until all interests have been consolidated or a non-standard unit has been approved by the division.

## SURFACE LOCATION (SHL)

NEW MEXICO EAST  
NAD 1983

X=800272 Y=410577  
LAT.: N 32.1259927  
LONG.: W 103.4968942  
NAD 1927

X=759086 Y=410519  
LAT.: N 32.1258680  
LONG.: W 103.4964244  
987' FSL 1116' FWL

## KICK OFF POINT (KOP)

NEW MEXICO EAST  
NAD 1983

X=801474 Y=409647  
LAT.: N 32.1234099  
LONG.: W 103.4930372  
NAD 1927

X=760288 Y=409589  
LAT.: N 32.1232851  
LONG.: W 103.4925676  
50' FSL 2311' FWL

## UPPER MOST PERF. (UMP)

NEW MEXICO EAST  
NAD 1983

X=801473 Y=409697  
LAT.: N 32.1235473  
LONG.: W 103.4930373  
NAD 1927

X=760287 Y=409639  
LAT.: N 32.1234226  
LONG.: W 103.4925677  
100' FSL 2311' FWL

## OPERATOR CERTIFICATION

I hereby certify that the information contained herein is true and complete to the best of my knowledge and belief, and that this organization either owns a working interest or unleased mineral interest in the land including the proposed bottom hole location or has a right to drill this well at this location pursuant to a contract with an owner of such a mineral or working interest, or to voluntary pooling agreement or a compulsory pooling order heretofore entered by the division.

## FED PERF. POINT (FPP)

NEW MEXICO EAST  
NAD 1983

X=801432 Y=414881  
LAT.: N 32.1377968  
LONG.: W 103.4930406  
NAD 1927

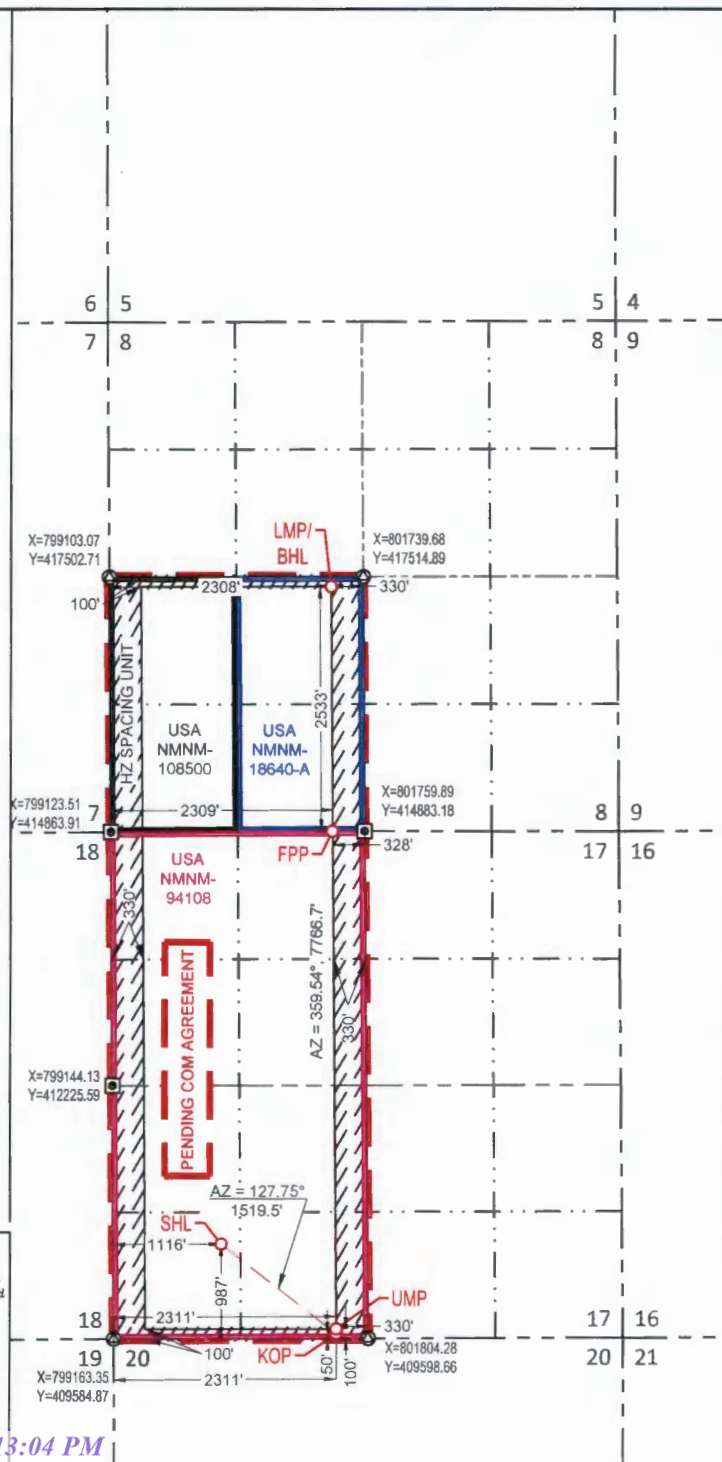
X=760246 Y=414823  
LAT.: N 32.1376721  
LONG.: W 103.4925701  
±0' FNL 2309' FWL

LOWER MOST PERF. (LMP)  
BOTTOM HOLE LOCATION (BHL)

NEW MEXICO EAST  
NAD 1983

X=801412 Y=417413  
LAT.: N 32.1447584  
LONG.: W 103.4930421  
NAD 1927

X=760226 Y=417355  
LAT.: N 32.1446338  
LONG.: W 103.4925712  
2533' FSL 2308' FWL



## SURVEYORS CERTIFICATION

I hereby certify that the well location shown on this plat was plotted from field notes of actual surveys made by me or under my supervision, and that the same is true and correct to the best of my belief.

05/07/2021

Date of Survey  
Signature and Seal of Professional Surveyor:

AMON DOMINGUEZ



API Number 30-025-51040	Pool Code 96994	Pool Name PITCHFORK RANCH; WOLFCAMP, SOUTH
Property Code 333757	Property Name SILVER TRAIN 17 FED COM	Well Number 715H
OGRID No. 7377	Operator Name EOG RESOURCES, INC.	Elevation 3337'

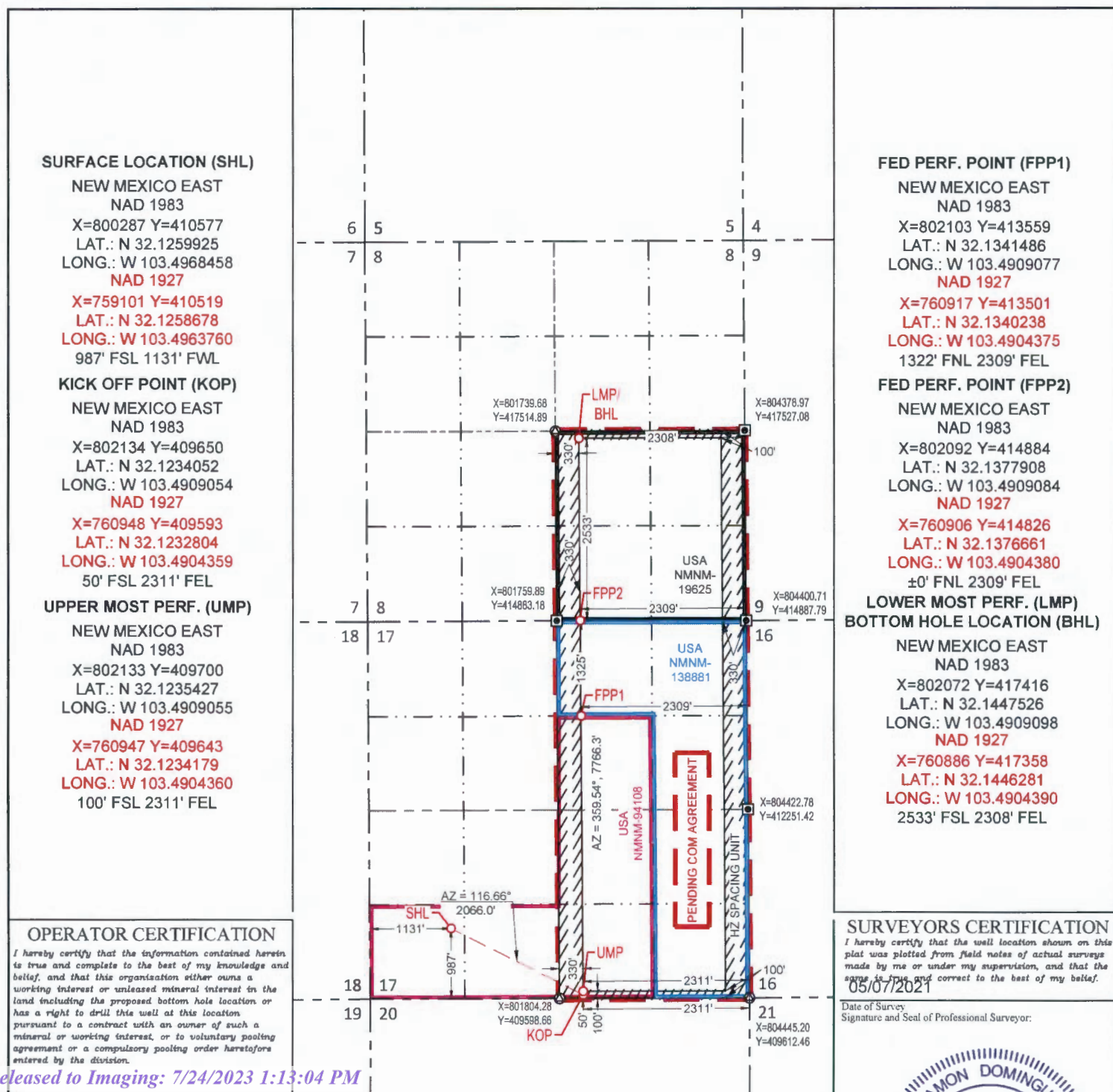
## Surface Location

UL or lot no.	Section	Township	Range	Lot Idn	Feet from the	North/South line	Feet from the	East/West line	County
M	17	25-S	34-E	-	987'	SOUTH	1131'	WEST	LEA

## Bottom Hole Location If Different From Surface

UL or lot no.	Section	Township	Range	Lot Idn	Feet from the	North/South line	Feet from the	East/West line	County
J	8	25-S	34-E	-	2533'	SOUTH	2308'	EAST	LEA
Dedicated Acres 480	Joint or Infill	Consolidated Code	Order No.	PENDING COM AGREEMENT					

No allowable will be assigned to this completion until all interests have been consolidated or a non-standard unit has been approved by the division.



API Number 30-025-51537	Pool Code 96994	Pool Name PITCHFORK RANCH; WOLFCAMP, SOUTH
Property Code 333757	Property Name SILVER TRAIN 17 FED COM	Well Number 716H
OGRID No. 7377	Operator Name EOG RESOURCES, INC.	Elevation 3353'

## Surface Location

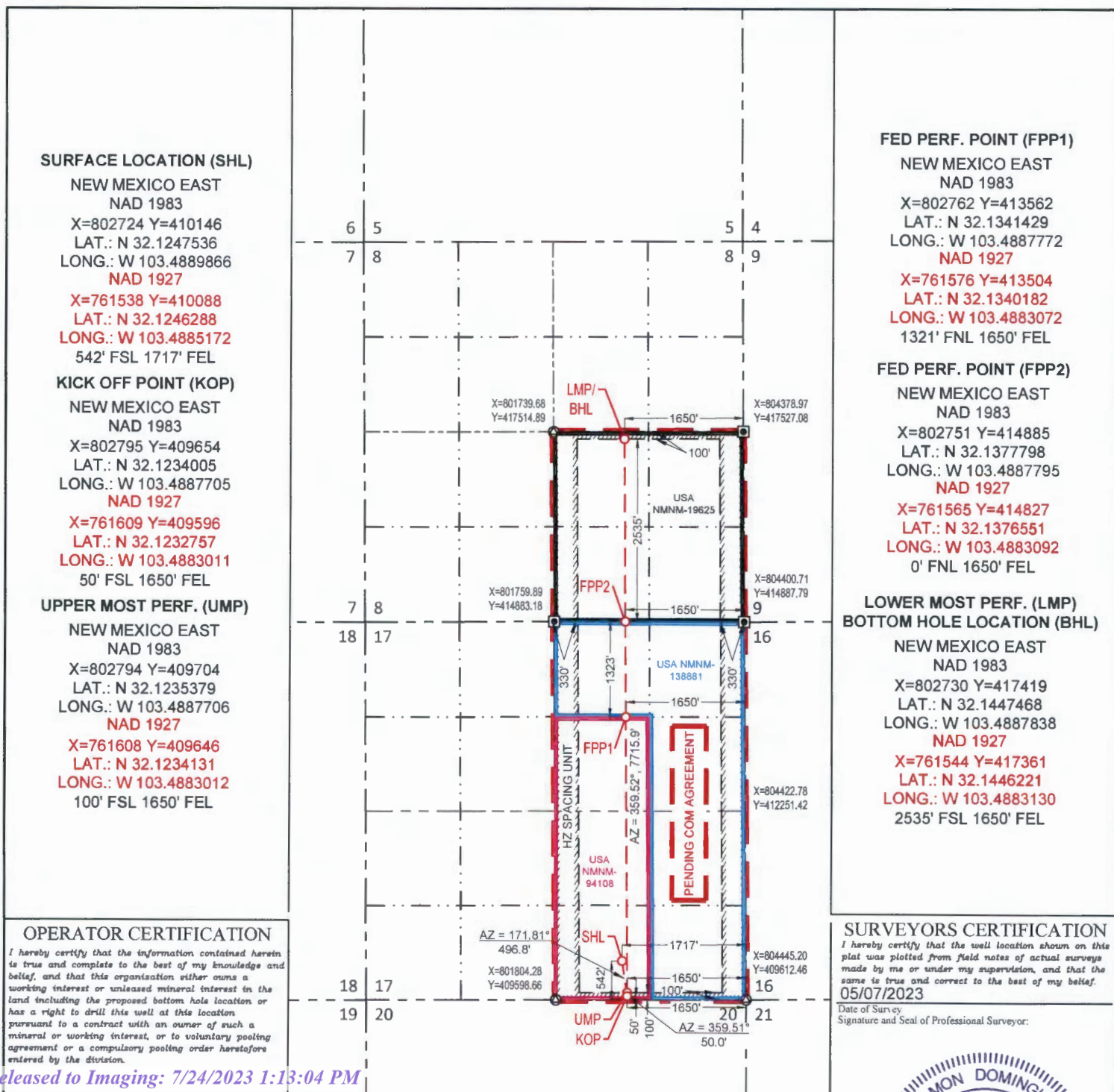
UL or lot no.	Section	Township	Range	Lot Idn	Feet from the	North/South line	Feet from the	East/West line	County
O	17	25-S	34-E	-	542'	SOUTH	1717'	EAST	LEA

## Bottom Hole Location If Different From Surface

UL or lot no.	Section	Township	Range	Lot Idn	Feet from the	North/South line	Feet from the	East/West line	County
J	8	25-S	34-E	-	2535'	SOUTH	1650'	EAST	LEA

Dedicated Acres	Joint or Infill	Consolidated Code	Order No.
480			PENDING COM AGREEMENT

No allowable will be assigned to this completion until all interests have been consolidated or a non-standard unit has been approved by the division.





**DISTRICT I**  
1625 N Friends Dr, Hobbs, N.M. 88240  
Phone: (575) 393-6161 Fax: (575) 393-0720

**DISTRICT II**  
811 S Fossil St., Artesia, N.M. 88210  
Phone: (575) 746-1283 Fax: (575) 746-9720

**DISTRICT III**  
1000 Rio Brazos Rd., Aztec, N.M. 87410  
Phone: (505) 333-6417 Fax: (505) 333-6470

**DISTRICT IV**  
1220 S St. Francis Dr., Santa Fe, N.M. 87505  
Phone: (505) 424-3807 Fax: (505) 426-3430

State of New Mexico  
Energy, Minerals & Natural Resources Department  
OIL CONSERVATION DIVISION  
1220 South St. Francis Dr.  
Santa Fe, New Mexico 87505

Form C-102  
Revised August 1, 2011  
Submit one copy to appropriate  
District Office  
☐ AMENDED REPORT

## WELL LOCATION AND ACREAGE DEDICATION PLAT

API Number <b>30-025-51539</b>		Pool Number <b>96994</b>		PITCHFORK RANCH; WOLFCAMP, SOUTH					
Property Code <b>333757</b>		Property Name <b>SILVER TRAIN 17 FED COM</b>						Well Number <b>717H</b>	
OGRID No <b>7377</b>		Operator Name <b>EOG RESOURCES, INC.</b>						Elevation <b>3353'</b>	
<b>Surface Location</b>									
UL or lot no. <b>O</b>	Section <b>17</b>	Township <b>25-S</b>	Range <b>34-E</b>	Lot Idn <b>-</b>	Feet from the <b>542'</b>	North/South line <b>SOUTH</b>	Feet from the <b>1702'</b>	East/West line <b>EAST</b>	County <b>LEA</b>
<b>Bottom Hole Location If Different From Surface</b>									
UL or lot no. <b>I</b>	Section <b>8</b>	Township <b>25-S</b>	Range <b>34-E</b>	Lot Idn <b>-</b>	Feet from the <b>2536'</b>	North/South line <b>SOUTH</b>	Feet from the <b>990'</b>	East/West line <b>EAST</b>	County <b>LEA</b>
Dedicated Acres <b>480</b>		Joint or Infill		Consolidated Code		Order No			
<b>PENDING COM AGREEMENT</b>									

No allowable will be assigned to this completion until all interests have been consolidated or a non-standard unit has been approved by the division

### SURFACE LOCATION (SHL)

NEW MEXICO EAST  
NAD 1983  
X=802739 Y=410146  
LAT.: N 32.1247534  
LONG.: W 103.4889382  
NAD 1927  
X=761553 Y=410088  
LAT.: N 32.1246287  
LONG.: W 103.4884687  
542' FSL 1702' FEL

### KICK OFF POINT (KOP)

NEW MEXICO EAST  
NAD 1983  
X=803455 Y=409657  
LAT.: N 32.1233957  
LONG.: W 103.4866387  
NAD 1927  
X=762269 Y=409599  
LAT.: N 32.1232709  
LONG.: W 103.4861694  
50' FSL 990' FEL

### UPPER MOST PERF. (UMP)

NEW MEXICO EAST  
NAD 1983  
X=803454 Y=409707  
LAT.: N 32.1235332  
LONG.: W 103.4866388  
NAD 1927  
X=762268 Y=409649  
LAT.: N 32.1234083  
LONG.: W 103.4861695  
100' FSL 990' FEL

### FED PERF. POINT (FPP)

NEW MEXICO EAST  
NAD 1983  
X=803411 Y=414886  
LAT.: N 32.1377687  
LONG.: W 103.4866473  
NAD 1927  
X=762225 Y=414828  
LAT.: N 32.1376440  
LONG.: W 103.4861771  
0' FNL 990' FEL

### LOWER MOST PERF. (LMP)

NEW MEXICO EAST  
NAD 1983  
X=803390 Y=417423  
LAT.: N 32.1447410  
LONG.: W 103.4866515  
NAD 1927  
X=762204 Y=417364  
LAT.: N 32.1446162  
LONG.: W 103.4861808  
2536' FSL 990' FEL

### OPERATOR CERTIFICATION

I hereby certify that the information contained herein is true and complete to the best of my knowledge and belief, and that this organization either owns a working interest or substantial mineral interest in the land including the proposed bottom hole location or has a right to drill this well at this location pursuant to a contract with an owner of such a mineral or working interest, or to voluntary pooling agreement or a compulsory pooling order heretofore entered by the state.

Star L Harrell 6/2/2023  
Signature Date

Star L Harrell  
Print Name

star\_harrell@eogresources.com  
E-mail Address

### SURVEYORS CERTIFICATION

I hereby certify that the well location shown on the plat was plotted from field notes of actual surveys made by me and under my supervision, and that the same is true and correct to the best of my belief.

05/07/2023  
Date of Survey

Signature and Seal of Professional Surveyor:

5/31/2023 1:20:02 PM



API Number 30-025-51540	Pool Code 96994	Pool Name PITCHFORK RANCH; WOLFCAMP, SOUTH
Property Code 333757	Property Name SILVER TRAIN 17 FED COM	Well Number 718H
OGRID No. 7377	Operator Name EOG RESOURCES, INC.	Elevation 3351'

## Surface Location

UL or lot no.	Section	Township	Range	Lot Idn	Feet from the	North/South line	Feet from the	East/West line	County
O	17	25-S	34-E	-	542'	SOUTH	1672'	EAST	LEA

## Bottom Hole Location If Different From Surface

UL or lot no.	Section	Township	Range	Lot Idn	Feet from the	North/South line	Feet from the	East/West line	County
I	8	25-S	34-E	-	2538'	SOUTH	330'	EAST	LEA
Dedicated Acres 480	Joint or Infill	Consolidated Code	Order No.	PENDING COM AGREEMENT					

No allowable will be assigned to this completion until all interests have been consolidated or a non-standard unit has been approved by the division.

## SURFACE LOCATION (SHL)

NEW MEXICO EAST  
NAD 1983

X=802769 Y=410146

LAT.: N 32.1247531

LONG.: W 103.4888413

NAD 1927

X=761583 Y=410088

LAT.: N 32.1246284

LONG.: W 103.4883718

542' FSL 1672' FEL

## KICK OFF POINT (KOP)

NEW MEXICO EAST  
NAD 1983

X=804115 Y=409661

LAT.: N 32.1233909

LONG.: W 103.4845069

NAD 1927

X=762929 Y=409603

LAT.: N 32.1232661

LONG.: W 103.4840377

50' FSL 330' FEL

## UPPER MOST PERF. (UMP)

NEW MEXICO EAST  
NAD 1983

X=804114 Y=409711

LAT.: N 32.1235284

LONG.: W 103.4845070

NAD 1927

X=762928 Y=409653

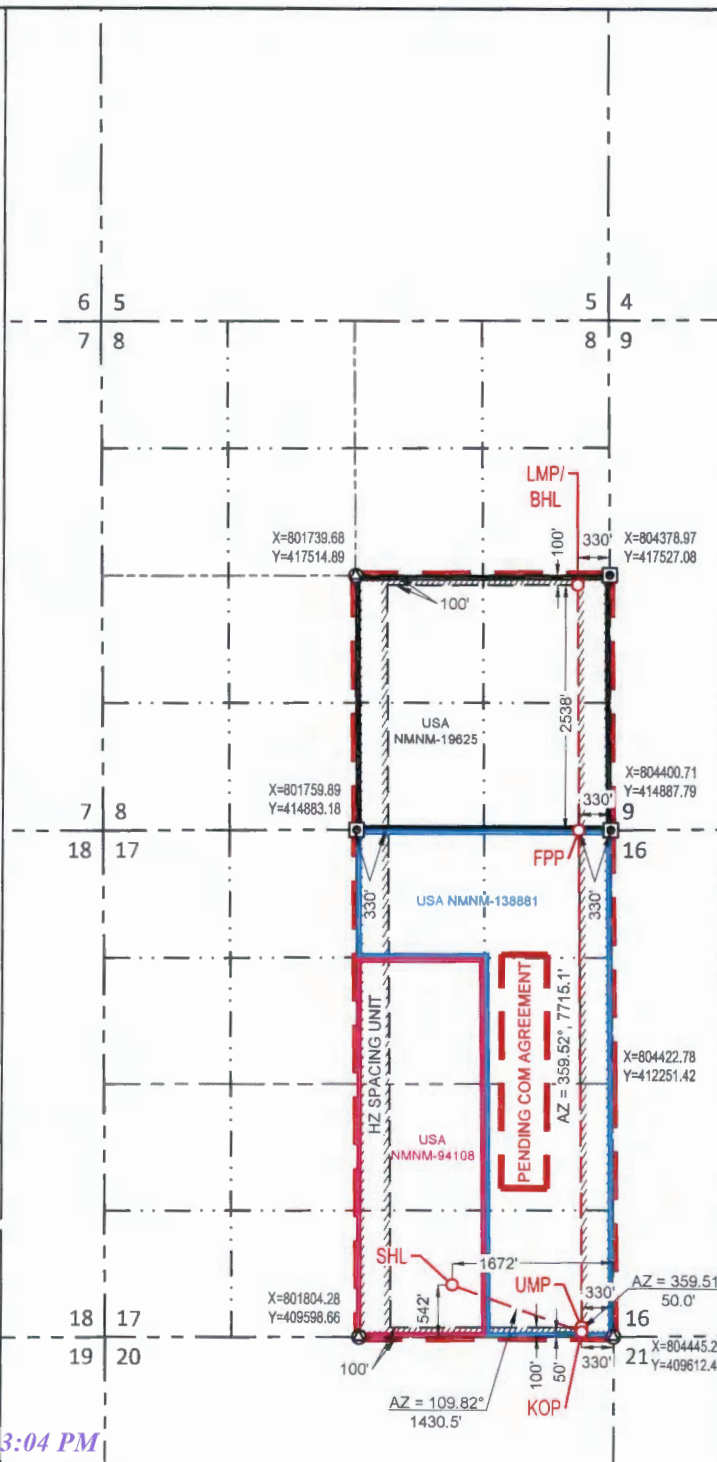
LAT.: N 32.1234035

LONG.: W 103.4840378

100' FSL 330' FEL

## OPERATOR CERTIFICATION

I hereby certify that the information contained herein is true and complete to the best of my knowledge and belief, and that this organization either owns a working interest or unleased mineral interest in the land including the proposed bottom hole location or has a right to drill this well at this location pursuant to a contract with an owner of such a mineral or working interest, or to voluntary pooling agreement or a compulsory pooling order heretofore entered by the division.



## FED PERF. POINT (FPP)

NEW MEXICO EAST  
NAD 1983

X=804071 Y=414887

LAT.: N 32.1377576

LONG.: W 103.4845152

NAD 1927

X=762885 Y=414829

LAT.: N 32.1376328

LONG.: W 103.4840450

0' FNL 330' FEL

LOWER MOST PERF. (LMP)  
BOTTOM HOLE LOCATION (BHL)

NEW MEXICO EAST  
NAD 1983

X=804050 Y=417426

LAT.: N 32.1447351

LONG.: W 103.4845192

NAD 1927

X=762864 Y=417368

LAT.: N 32.1446103

LONG.: W 103.4840486

2538' FSL 330' FEL

## SURVEYORS CERTIFICATION

I hereby certify that the well location shown on this plot was plotted from field notes of actual surveys made by me or under my supervision, and that the same is true and correct to the best of my belief.

05/07/2023

Date of Survey

Signature and Seal of Professional Surveyor:

AMON DOMINGUEZ

**District I**  
1625 N. French Dr., Hobbs, NM 88240  
Phone: (575) 393-6161 Fax: (575) 393-0720  
**District II**  
811 S. First St., Artesia, NM 88210  
Phone: (575) 748-1283 Fax: (575) 748-9720  
**District III**  
1000 Rio Brazos Road, Aztec, NM 87410  
Phone: (505) 334-6178 Fax: (505) 334-6170  
**District IV**  
1220 S. St. Francis Dr., Santa Fe, NM 87505  
Phone: (505) 476-3460 Fax: (505) 476-3462

State of New Mexico  
Energy, Minerals & Natural Resources  
Department  
OIL CONSERVATION DIVISION  
1220 South St. Francis Dr.  
Santa Fe, NM 87505

FORM C-102

Revised August 1, 2011

Submit one copy to appropriate

District Office

☐ AMENDED REPORT

## WELL LOCATION AND ACREAGE DEDICATION PLAT

<sup>1</sup> API Number <b>30-025-51041</b>		<sup>2</sup> Pool Code <b>96994</b>	<sup>3</sup> Pool Name <b>PITCHFORK RANCH; WOLFCAMP, SOUTH</b>
<sup>4</sup> Property Code <b>333757</b>	<sup>5</sup> Property Name <b>SILVER TRAIN 17 FED COM</b>		<sup>6</sup> Well Number <b>721H</b>
<sup>7</sup> OGRID No. <b>7377</b>	<sup>8</sup> Operator Name <b>EOG RESOURCES, INC.</b>		<sup>9</sup> Elevation <b>3343'</b>

<sup>10</sup>Surface Location

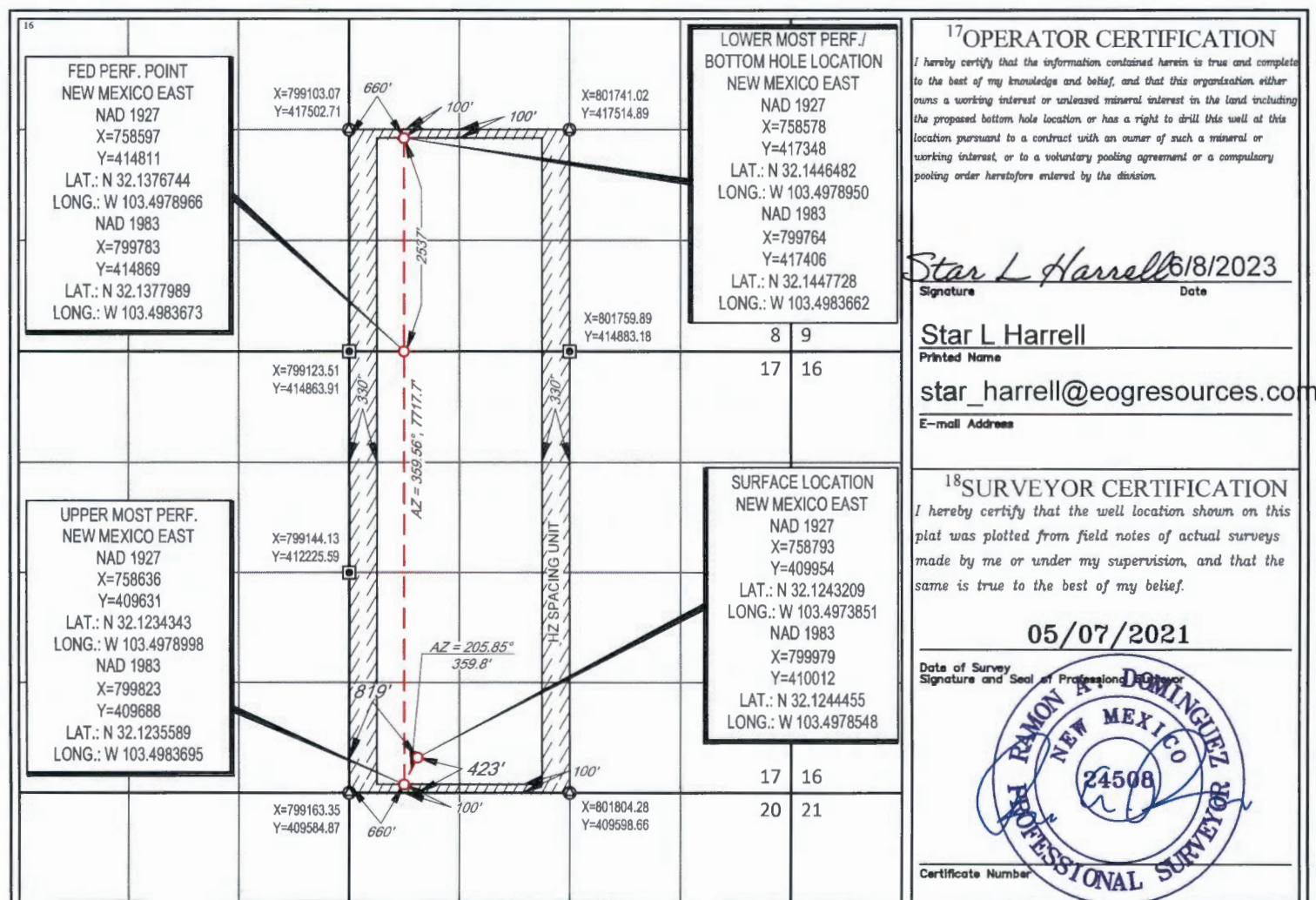
UL or lot no.	Section	Township	Range	Lot Idn	Feet from the	North/South line	Feet from the	East/West line	County
<b>M</b>	<b>17</b>	<b>25-S</b>	<b>34-E</b>	<b>-</b>	<b>423'</b>	<b>SOUTH</b>	<b>819'</b>	<b>WEST</b>	<b>LEA</b>

<sup>11</sup>Bottom Hole Location If Different From Surface

UL or lot no.	Section	Township	Range	Lot Idn	Feet from the	North/South line	Feet from the	East/West line	County
<b>L</b>	<b>8</b>	<b>25-S</b>	<b>34-E</b>	<b>-</b>	<b>2537'</b>	<b>SOUTH</b>	<b>660'</b>	<b>WEST</b>	<b>LEA</b>

<sup>12</sup> Dedicated Acres <b>480</b>	<sup>13</sup> Joint or Infill	<sup>14</sup> Consolidation Code	<sup>15</sup> Order No.
---	-------------------------------	----------------------------------	-------------------------

No allowable will be assigned to this completion until all interests have been consolidated or a non-standard unit has been approved by the division.





DISTRICT I  
1631 W. French Dr., Hobbs, NM 88240  
Phone: (575) 395-6161 Fax: (575) 395-0720

DISTRICT II  
811 S. First St., Artesia, NM 88210  
Phone: (575) 746-1263 Fax: (575) 746-0720

DISTRICT III  
1000 Blue Horizon Rd., Alamogordo, NM 87101  
Phone: (505) 351-4618 Fax: (505) 351-4610

DISTRICT IV  
1220 S. St. Francis Dr., Santa Fe, NM 87505  
Phone: (505) 476-3400 Fax: (505) 476-3461

State of New Mexico  
Energy, Minerals & Natural Resources Department  
OIL CONSERVATION DIVISION  
1220 South St. Francis Dr.  
Santa Fe, New Mexico 87505

Form C-102  
Revised August 1, 2011  
Submit one copy to appropriate  
District Office  
☐ AMENDED REPORT

## WELL LOCATION AND ACREAGE DEDICATION PLAT

API Number <b>30-025-51536</b>	Pool Code <b>96994</b>	Pool Name <b>PITCHFORK RANCH; WOLFCAMP, SOUTH</b>
Property Code <b>333757</b>	Property Name <b>SILVER TRAIN 17 FED COM</b>	Well Number <b>724H</b>
OGRID No <b>7377</b>	Operator Name <b>EOG RESOURCES, INC.</b>	Elevation <b>3337'</b>

## Surface Location

UL or lot no.	Section	Township	Range	Lot Idn	Feet from the	North/South line	Feet from the	East/West line	County
<b>M</b>	<b>17</b>	<b>25-S</b>	<b>34-E</b>	<b>-</b>	<b>986'</b>	<b>SOUTH</b>	<b>1146'</b>	<b>WEST</b>	<b>LEA</b>

## Bottom Hole Location If Different From Surface

UL or lot no.	Section	Township	Range	Lot Idn	Feet from the	North/South line	Feet from the	East/West line	County
<b>J</b>	<b>8</b>	<b>25-S</b>	<b>34-E</b>	<b>-</b>	<b>2534'</b>	<b>SOUTH</b>	<b>1980'</b>	<b>EAST</b>	<b>LEA</b>

Dedicated Acres <b>480</b>	Joint or Infill	Consolidated Code	Order No. <b>PENDING COM AGREEMENT</b>
-------------------------------	-----------------	-------------------	---

No allowable will be assigned to this completion until all interests have been consolidated or a non-standard unit has been approved by the division.

<p><b>SURFACE LOCATION (SHL)</b> NEW MEXICO EAST NAD 1983 X=800302 Y=410577 LAT.: N 32.1259923 LONG.: W 103.4967973 NAD 1927 X=759116 Y=410519 LAT.: N 32.1258676 LONG.: W 103.4963275 986' FSL 1146' FVL</p> <p><b>KICK OFF POINT (KOP)</b> NEW MEXICO EAST NAD 1983 X=802465 Y=409652 LAT.: N 32.1234029 LONG.: W 103.4898364 NAD 1927 X=761279 Y=409594 LAT.: N 32.1232780 LONG.: W 103.4893670 50' FSL 1980' FEL</p> <p><b>UPPER MOST PERF. (UMP)</b> NEW MEXICO EAST NAD 1983 X=802464 Y=409702 LAT.: N 32.1235403 LONG.: W 103.4898365 NAD 1927 X=761278 Y=409644 LAT.: N 32.1234155 LONG.: W 103.4893671 100' FSL 1980' FEL</p> <p><b>OPERATOR CERTIFICATION</b> I hereby certify that the information contained herein is true and complete to the best of my knowledge and belief, and that this organization either owns a working interest or undivided mineral interest in the land including the proposed bottom hole location or has a right to drill this well at this location pursuant to a contract with an owner of such a mineral or working interest, or to voluntary pooling agreement or a compulsory pooling order heretofore entered by the division.</p> <p><i>Star L Harrell</i> 6/2/2023 Signature Date</p> <p>Star L Harrell Print Name</p> <p>star_harrell@eogresources.com E-mail Address</p>		<p><b>FED PERF. POINT (FPP1)</b> NEW MEXICO EAST NAD 1983 X=802432 Y=413560 LAT.: N 32.1341457 LONG.: W 103.4898432 NAD 1927 X=761246 Y=413502 LAT.: N 32.1340210 LONG.: W 103.4893731 1321' FNL 1980' FEL</p> <p><b>FED PERF. POINT (FPP2)</b> NEW MEXICO EAST NAD 1983 X=802421 Y=414884 LAT.: N 32.1377853 LONG.: W 103.4898455 NAD 1927 X=761235 Y=414826 LAT.: N 32.1376605 LONG.: W 103.4893752 ±0' FNL 1980' FEL</p> <p><b>LOWER MOST PERF. (LMP)</b> <b>BOTTOM HOLE LOCATION (BHL)</b> NEW MEXICO EAST NAD 1983 X=802400 Y=417418 LAT.: N 32.1447498 LONG.: W 103.4898499 NAD 1927 X=761214 Y=417360 LAT.: N 32.1446251 LONG.: W 103.4893791 2534' FSL 1980' FEL</p> <p><b>SURVEYORS CERTIFICATION</b> I hereby certify that the well location shown on this plat was plotted from field notes of actual surveys made by me or under my supervision, and that the same is true and correct to the best of my belief. 05/07/2021 Date of Survey Signature and Seal of Professional Surveyor</p> <p><i>Ramon Dominguez</i> NEW MEXICO 24508 PROFESSIONAL SURVEYOR</p> <p>5/31/2023 1:25:44 PM</p>
--	--	---





Received by OGD: 6/13/2023 2:58:28 PM

API Number 30-025-51039	Pool Code 96994	Pool Name PITCHFORK RANCH; WOLFCAMP, SOUTH
Property Code 333757	Property Name SILVER TRAIN 17 FED COM	
OGRID No. 7377	Operator Name EOG RESOURCES, INC.	
	Well Number 729H	Elevation 3337'

Page 16 of 17

## Surface Location

UL or lot no.	Section	Township	Range	Lot Idn	Feet from the	North/South line	Feet from the	East/West line	County
M	17	25-S	34-E	-	987'	SOUTH	1101'	WEST	LEA

## Bottom Hole Location If Different From Surface

UL or lot no.	Section	Township	Range	Lot Idn	Feet from the	North/South line	Feet from the	East/West line	County
K	8	25-S	34-E	-	2534'	SOUTH	1980'	WEST	LEA
Dedicated Acres 480		Joint or Infill		Consolidated Code		Order No <b>PENDING COM AGREEMENT</b>			

No allowable will be assigned to this completion until all interests have been consolidated or a non-standard unit has been approved by the division.

## SURFACE LOCATION (SHL)

NEW MEXICO EAST  
NAD 1983  
X=800257 Y=410577  
LAT.: N 32.1259929  
LONG.: W 103.4969427  
NAD 1927  
X=759071 Y=410519  
LAT.: N 32.1258682  
LONG.: W 103.4964728  
987' FSL 1101' FWL

## KICK OFF POINT (KOP)

NEW MEXICO EAST  
NAD 1983  
X=801143 Y=409645  
LAT.: N 32.1234122  
LONG.: W 103.4941060  
NAD 1927  
X=759957 Y=409587  
LAT.: N 32.1232875  
LONG.: W 103.4936364  
50' FSL 1980' FWL

## UPPER MOST PERF. (UMP)

NEW MEXICO EAST  
NAD 1983  
X=801143 Y=409695  
LAT.: N 32.1234597  
LONG.: W 103.4941059  
NAD 1927  
X=759956 Y=409637  
LAT.: N 32.1234249  
LONG.: W 103.4936363  
100' FSL 1980' FWL

## OPERATOR CERTIFICATION

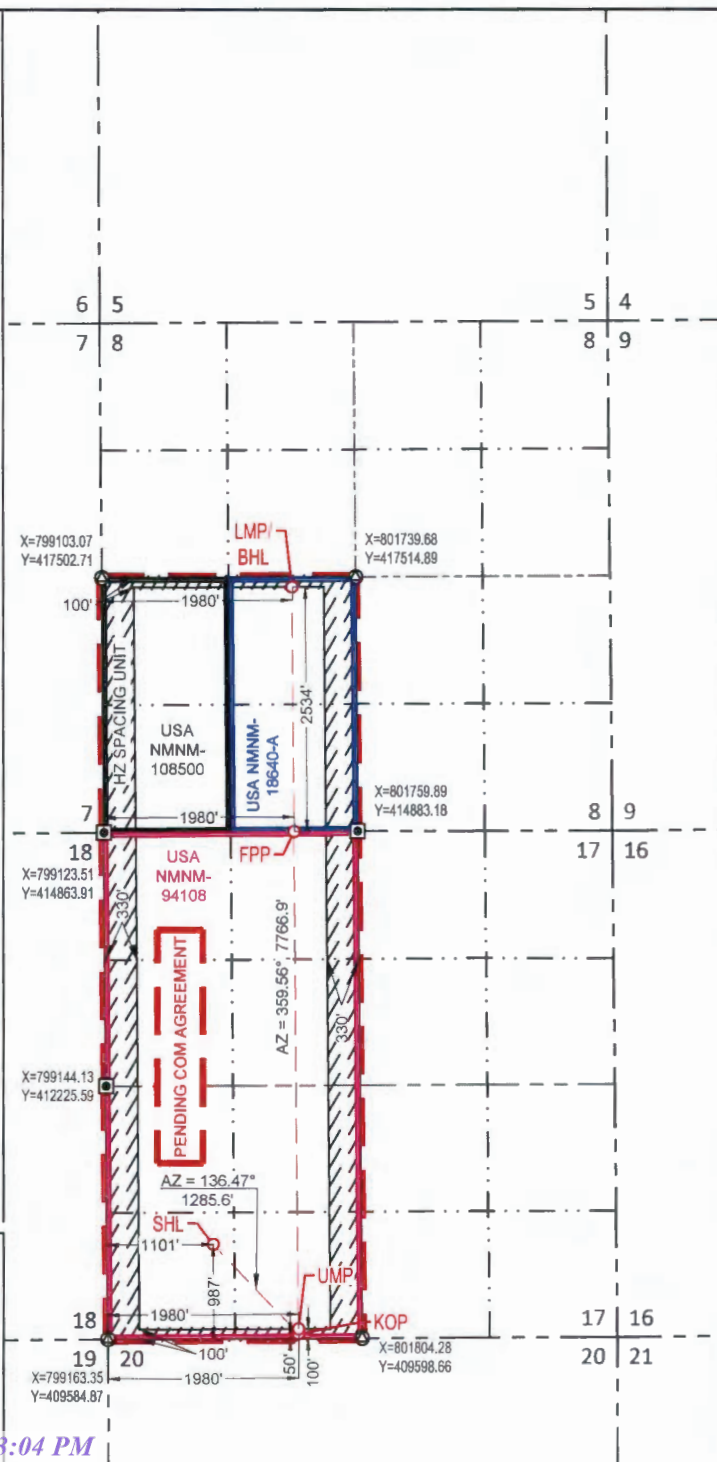
I hereby certify that the information contained herein is true and complete to the best of my knowledge and belief, and that this organization either owns a working interest or unleased mineral interest in the land including the proposed bottom hole location or has a right to drill this well at this location pursuant to a contract with an owner of such a mineral or working interest, or to voluntary pooling agreement or a compulsory pooling order heretofore entered by the division.

## FED PERF. POINT (FPP)

NEW MEXICO EAST  
NAD 1983  
X=801103 Y=414878  
LAT.: N 32.1377972  
LONG.: W 103.4941030  
NAD 1927  
X=759917 Y=414820  
LAT.: N 32.1376726  
LONG.: W 103.4936325  
±0' FNL 1980' FWL

LOWER MOST PERF. (LMP)  
BOTTOM HOLE LOCATION (BHL)

NEW MEXICO EAST  
NAD 1983  
X=801084 Y=417412  
LAT.: N 32.1447613  
LONG.: W 103.4941015  
NAD 1927  
X=759898 Y=417354  
LAT.: N 32.1446367  
LONG.: W 103.4936306  
2534' FSL 1980' FWL



## SURVEYORS CERTIFICATION

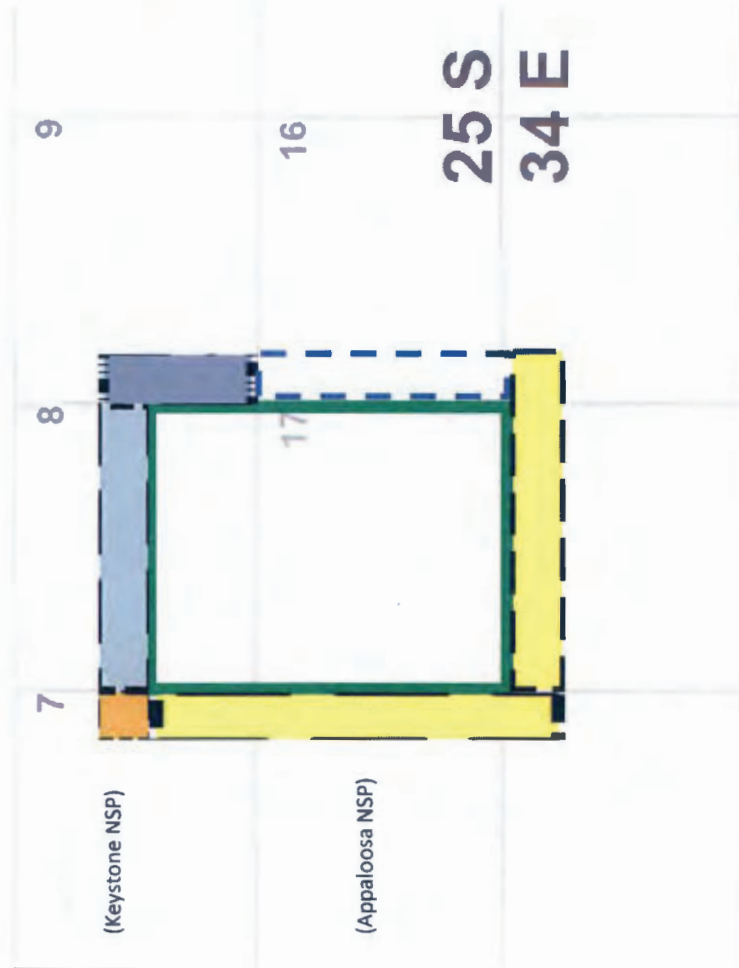
I hereby certify that the well location shown on this plot was plotted from field notes of actual surveys made by me or under my supervision, and that the same is true and correct to the best of my belief.  
05/07/2021

Date of Survey  
Signature and Seal of Professional Surveyor:

AMON DOMINGUEZ



**Proposed Non-Standard Horizontal Spacing Unit  
Silver Train 17 Fed Com: S2 of Sec. 8 & All of Sec. 17-25S-34E  
Ease Summary  
Notice Tracts**









	Proposed Silver Train NSSU
	Wolfcamp Wells EOG – Operator / Working Interest Owners: Fortuna III Permian NHPP Permian, LLC FR Energy, LLC Federal Acreage
	Wolfcamp Wells Operated by EOG 100% Federal Acreage
	Wolfcamp Wells EOG - Operator / Working Interest Owners: Westlawn Fortuna, Inc. NHPP Permian, LLC FR Energy, LLC Federal Acreage
	Wolfcamp Wells Operated by EOG 100% State Acreage
	Wolfcamp Wells EOG – Operator / Working Interest Owners: BEXP I OG, LLC Federal Acreage

Exhibit C



## Top of Wolfcamp Structure TVDSS (100' C.I.)

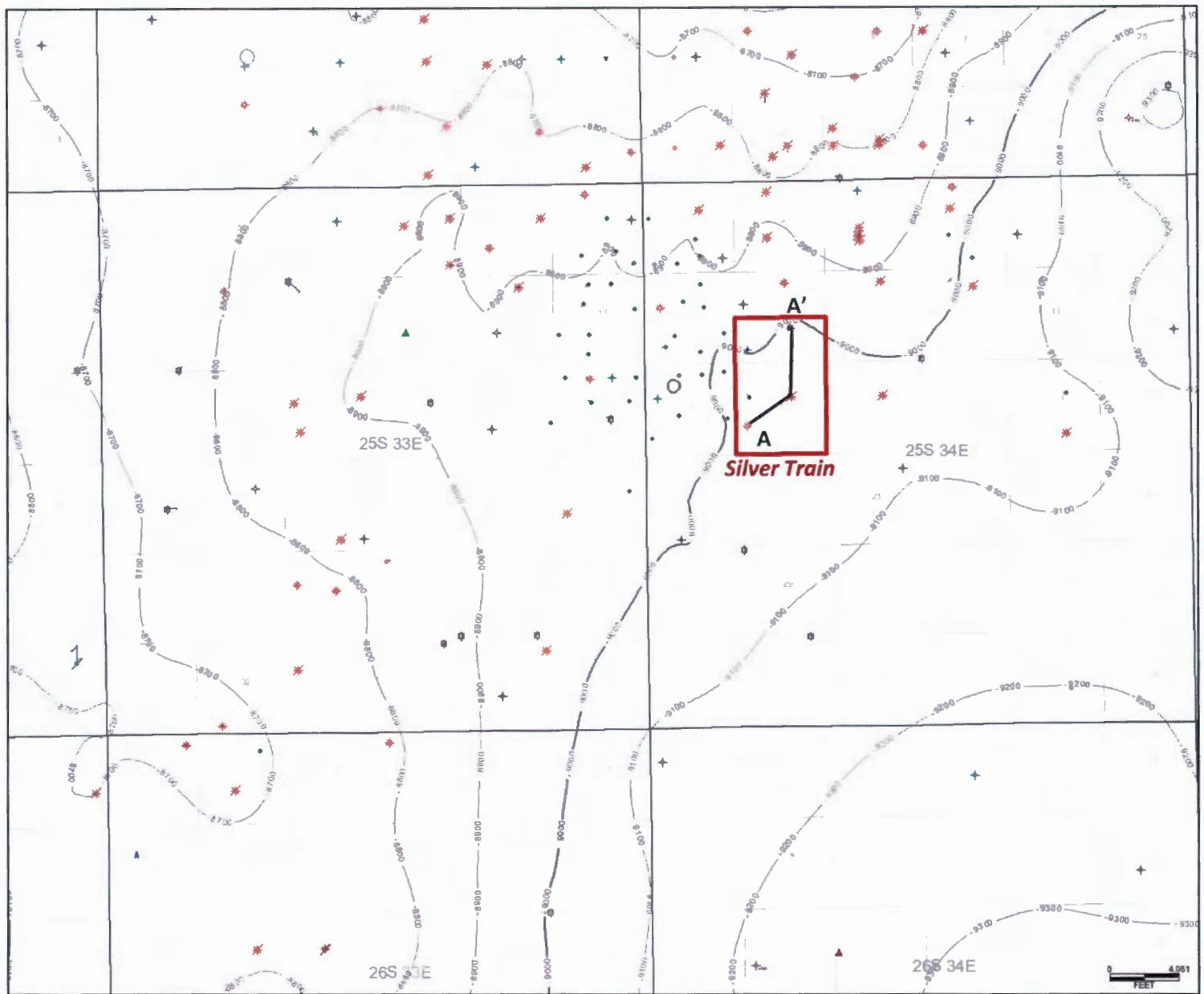
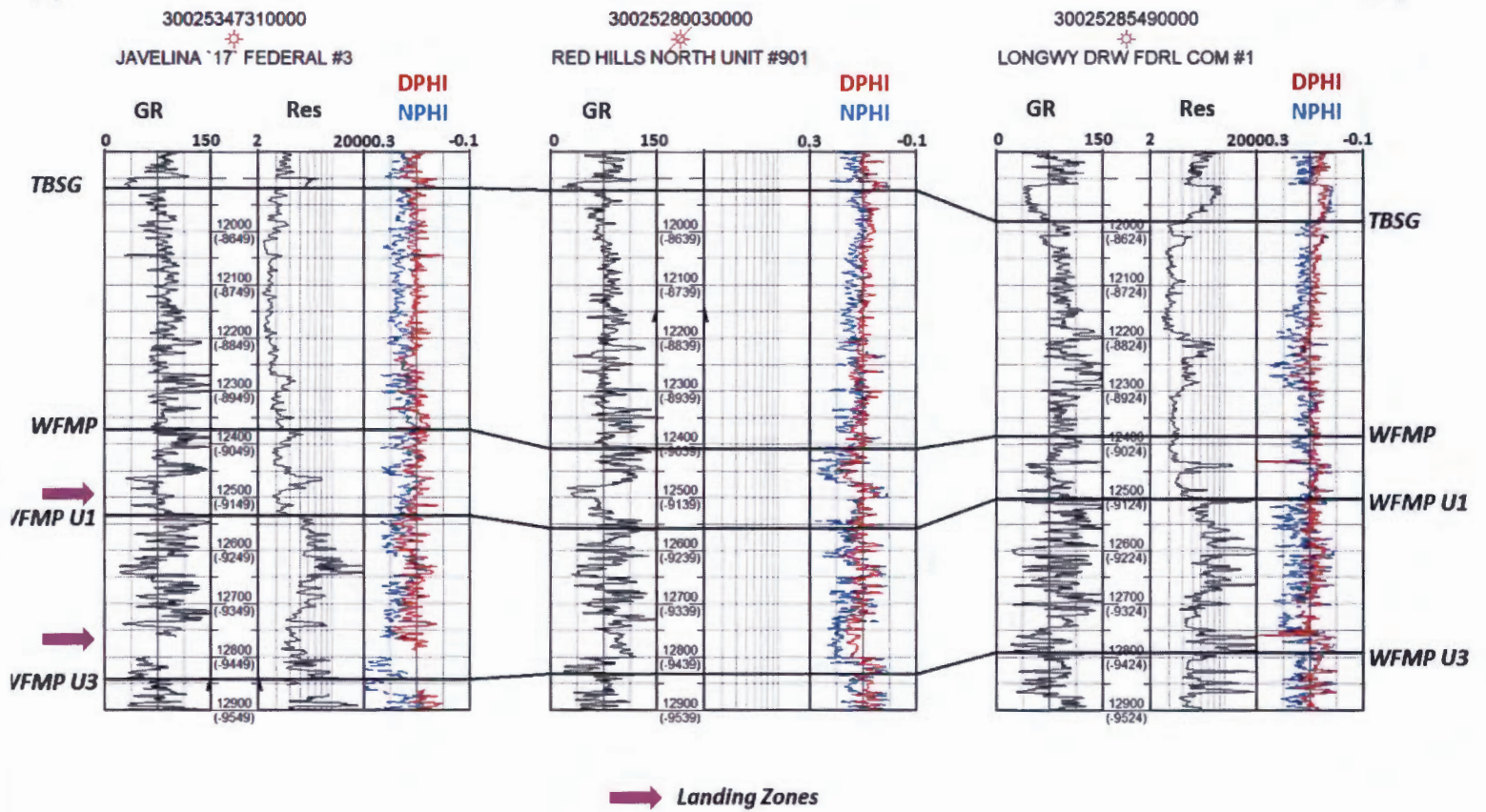


Exhibit D

A (S)

A' (N)





Lisa Youngblood  
Phone: (432) 247-6331  
Email: lisa\_youngblood@eogresources.com

June 13, 2023

**VIA CERTIFIED MAIL**

**TO: ALL AFFECTED PERSONS**

**Re: AMENDED Application of EOG Resources, Inc. for administrative approval of a 960-acre non-standard horizontal spacing unit in the Pitchfork Ranch; Wolfcamp, South Pool (96994) comprised of the S/2 of Section 8 and all of Section 17, Township 25 South, Range 34 East, NMPM, Lea County, New Mexico.**

Ladies and Gentlemen:

Enclosed is a copy of the above-referenced application which was filed with the New Mexico Oil Conservation Division on this date. Any objection to this application must be filed in writing within twenty days from this date with the applicant and the New Mexico Oil Conservation Division, 1220 South St. Francis Drive, Santa Fe, New Mexico, 87505. If no objection is received within this twenty-day period, this application may be approved administratively by the Division.

If you have any questions about this application, please contact the following:

Daniel Koury  
EOG Resources, Inc.  
(432) 686-3713  
Daniel\_koury@eogresources.com

Very truly yours,  
*Lisa Youngblood*  
Lisa Youngblood  
Regulatory Specialist



Well Names	Date NSL Sent	Owners NSL Sent to	Mail Tracking #
Silver Train 17 Fed Com 701H	6/13/2023	New Mexico Oil Conservation Division	7020 3160 0000 1240 0084
Silver Train 17 Fed Com 702H	6/13/2023	Bureau of Land Management	7020 3160 0000 1240 0077
Silver Train 17 Fed Com 713H	6/13/2023	NHPP Permian, LLC	7022 2410 0001 5582 4207
Silver Train 17 Fed Com 714H	6/13/2023	New Mexico State Land Office	7022 2410 0001 5582 4191
Silver Train 17 Fed Com 715H	6/13/2023	Fortuna III Perminan	7022 2410 0001 5582 4214
Silver Train 17 Fed Com 716H	6/13/2023	FR Energy, LLC	7022 2410 0001 5582 4221
Silver Train 17 Fed Com 717H	6/13/2023	Westlawn Fortuna, Inc.	7022 2410 0001 5582 4238
Silver Train 17 Fed Com 718H	6/13/2023	BEXP I OG, LLC	7022 2410 0001 5582 4047
Silver Train 17 Fed Com 721H			
Silver Train 17 Fed Com 724H			
Silver Train 17 Fed Com 728H			
Silver Train 17 Fed Com 729H			

**From:** [Lisa Youngblood](#)  
**To:** [Lowe, Leonard, EMNRD](#)  
**Subject:** [EXTERNAL] Re: NSP application - Silver Train 17 Fed Com Wells  
**Date:** Thursday, June 15, 2023 5:09:01 PM

---

CAUTION: This email originated outside of our organization. Exercise caution prior to clicking on links or opening attachments.

Good Afternoon Mr. Lowe,

There was a typo on the cover letter that stated section 19 rather than section 17, that is why I resubmitted the documents as well as sent out new notification.

You can reject the first one if needed.

Thank you,  
Lisa Youngblood

On Jun 15, 2023, at 18:05, Lowe, Leonard, EMNRD  
<Leonard.Lowe@emnrd.nm.gov> wrote:

**CAUTION:** This email originated from outside of the organization. Do not click links or open attachments unless you recognize the sender and know the content is safe.

Ms. Lisa Trascher,

The OCD has received a few NSP applications for the above subject wells.

Action ID NO. 225866  
Received on 06/07/23  
Via Jordan Kessler

And

Your Submittal  
Action ID NO 227196  
Received on 06/13/23

They both appear to be referencing the same wells and request.

I may need to delete your submittal for reason of duplicate submittals. I have yet to review both in detail to decipher the difference, but from what I've seen they appear to be duplicate applications.

Let me know otherwise. If I do not hear from you by COB 06/16/23, I will delete.

**Leonard R. Lowe**  
Engineering Bureau  
OCD - EMNRD

8801 Horizon Blvd NE  
Albuquerque, N.M. 87113  
CELL NUMBER: 505-930-6717  
<http://www.emnrd.state.nm.us/ocd/>



**District I**

1625 N. French Dr., Hobbs, NM 88240  
Phone:(575) 393-6161 Fax:(575) 393-0720

**District II**

811 S. First St., Artesia, NM 88210  
Phone:(575) 748-1283 Fax:(575) 748-9720

**District III**

1000 Rio Brazos Rd., Aztec, NM 87410  
Phone:(505) 334-6178 Fax:(505) 334-6170

**District IV**

1220 S. St Francis Dr., Santa Fe, NM 87505  
Phone:(505) 476-3470 Fax:(505) 476-3462

**State of New Mexico**  
**Energy, Minerals and Natural Resources**  
**Oil Conservation Division**  
**1220 S. St Francis Dr.**  
**Santa Fe, NM 87505**

COMMENTS

Action 227196

**COMMENTS**

Operator: EOG RESOURCES INC P.O. Box 2267 Midland, TX 79702	OGRID: 7377
	Action Number: 227196
	Action Type: [UF-NSP] Non-Standard Proration (NSP)

**COMMENTS**

Created By	Comment	Comment Date
llowe	Silver Train 17 Federal Com Well No 701H 30-025-51037 Silver Train 17 Federal Com Well No 702H 30-025-51038 Silver Train 17 Federal Com Well No 713H 30-025-PENDING Silver Train 17 Federal Com Well No 714H 30-025-PENDING Silver Train 17 Federal Com Well No 715H 30-025-PENDING Silver Train 17 Federal Com Well No 716H 30-025-PENDING Silver Train 17 Federal Com Well No 717H 30-025-51539 Silver Train 17 Federal Com Well No 718H 30-025-PENDING Silver Train 17 Federal Com Well No 721H 30-025-51041 Silver Train 17 Federal Com Well No 724H 30-025-51536 Silver Train 17 Federal Com Well No 728H 30-025-PENDING Silver Train 17 Federal Com Well No 729H 30-025-PENDING	6/16/2023

**District I**  
1625 N. French Dr., Hobbs, NM 88240  
Phone:(575) 393-6161 Fax:(575) 393-0720  
**District II**  
811 S. First St., Artesia, NM 88210  
Phone:(575) 748-1283 Fax:(575) 748-9720  
**District III**  
1000 Rio Brazos Rd., Aztec, NM 87410  
Phone:(505) 334-6178 Fax:(505) 334-6170  
**District IV**  
1220 S. St Francis Dr., Santa Fe, NM 87505  
Phone:(505) 476-3470 Fax:(505) 476-3462

State of New Mexico  
Energy, Minerals and Natural Resources  
Oil Conservation Division  
1220 S. St Francis Dr.  
Santa Fe, NM 87505

CONDITIONS  
  
Action 227196

CONDITIONS

Operator: EOG RESOURCES INC P.O. Box 2267 Midland, TX 79702	OGRID: 7377
	Action Number: 227196
	Action Type: [UF-NSP] Non-Standard Proration (NSP)

CONDITIONS

Created By	Condition	Condition Date
llowe	None	6/16/2023