

ID NO. 335456

NSP - 2204

Revised March 23, 2017

RECEIVED: 04/19/24	REVIEWER:	TYPE:	APP NO: pLEL2412452594
--------------------	-----------	-------	------------------------

ABOVE THIS TABLE FOR OCD DIVISION USE ONLY

NEW MEXICO OIL CONSERVATION DIVISION
 - Geological & Engineering Bureau -
 1220 South St. Francis Drive, Santa Fe, NM 87505

**ADMINISTRATIVE APPLICATION CHECKLIST**

THIS CHECKLIST IS MANDATORY FOR ALL ADMINISTRATIVE APPLICATIONS FOR EXCEPTIONS TO DIVISION RULES AND REGULATIONS WHICH REQUIRE PROCESSING AT THE DIVISION LEVEL IN SANTA FE

Applicant: Cimarex Energy Co. **OGRID Number:** 215099
Well Name: Cascade 28 Federal Wells **API:** Various
Pool: Bobcat Draw; Upper Wolfcamp **Pool Code:** 98094

SUBMIT ACCURATE AND COMPLETE INFORMATION REQUIRED TO PROCESS THE TYPE OF APPLICATION INDICATED BELOW

1) **TYPE OF APPLICATION:** Check those which apply for [A]

A. Location – Spacing Unit – Simultaneous Dedication

☐ NSL☐ NSP (PROJECT AREA)☒ NSP (PRORATION UNIT)☐ SD

B. Check one only for [I] or [II]

[I] Commingling – Storage – Measurement

☐ DHC☐ CTB☐ PLC☐ PC☐ OLS☐ OLM

[II] Injection – Disposal – Pressure Increase – Enhanced Oil Recovery

☐ WFX☐ PMX☐ SWD☐ IPI☐ EOR☐ PPR2) **NOTIFICATION REQUIRED TO:** Check those which apply.A. ☒ Offset operators or lease holdersB. ☐ Royalty, overriding royalty owners, revenue ownersC. ☐ Application requires published noticeD. ☒ Notification and/or concurrent approval by SLOE. ☒ Notification and/or concurrent approval by BLMF. ☐ Surface ownerG. ☒ For all of the above, proof of notification or publication is attached, and/or,H. ☐ No notice required**FOR OCD ONLY**

☐ Notice Complete
☐ Application Content Complete

3) **CERTIFICATION:** I hereby certify that the information submitted with this application for administrative approval is **accurate** and **complete** to the best of my knowledge. I also understand that **no action** will be taken on this application until the required information and notifications are submitted to the Division.

Note: Statement must be completed by an individual with managerial and/or supervisory capacity.

Deana M. Bennett

Print or Type Name

s/ Deana M. Bennett

Signature

04/19/2024

Date

505-848-1834

Phone Number

deana.bennett@modrall.com

e-mail Address



MODRALL SPERLING

L A W Y E R S

VIA ELECTRONIC FILING

April 19, 2024

Director Dylan Fuge and OCD Engineering Bureau
Oil Conservation Division
Energy, Minerals and
Natural Resources Department
1220 South Saint Francis Drive
Santa Fe, New Mexico 87505

Deana M. Bennett
505.848.1834
Deana.bennett@modrall.com

Re: Application of Cimarex Energy Co. for administrative approval of a 640-acre, more or less, non-standard spacing unit in the Wolfcamp Formation comprised of Section 28, Township 25 South, Range 33 East, Lea County, New Mexico.

Dear Director Fuge/OCD Engineering Bureau:

Cimarex Energy Co., OGRID Number 215099, respectfully requests administrative approval of a 640-acre, more or less, non-standard unit ("NSU") comprised of Section 28, Township 25 South, Range 33 East, Lea County, New Mexico. Cimarex is requesting this NSU to match a Communitization Agreement for the acreage underlying Section 28, Township 25 South, Range 33 East, Lea County, New Mexico. The wells target the Wolfcamp formation and the only pool within the Wolfcamp formation underlying the proposed non-standard spacing unit is Bobcat Draw; Upper Wolfcamp (Code 98094), which follows the statewide spacing rules.

The Wells are:

<u>Well Name</u>	<u>API</u>
Cascade 28 Federal 29H	(30-025-50783)
Cascade 28 Federal 30H	(30-025-50104)
Cascade 28 Federal 31H	(30-025-50105)
Cascade 28 Federal 403H	(Pending)
Cascade 28 Federal 404H	(Pending)
Cascade 28 Federal 412H	(Pending)
Cascade 28 Federal 413H	(Pending)

C-102s for each well are attached hereto as **Exhibit A**. Each well will comply with the statewide setback requirements for the non-standard spacing unit.

Modrall Sperling
Roehl Harris & Sisk P.A.

500 Fourth Street NW
Suite 1000
Albuquerque,
New Mexico 87102

PO Box 2168
Albuquerque,
New Mexico 87103-2168

Tel: 505.848.1800
www.modrall.com

Page 2

Cimarex's drilling program for this area will develop the Wolfcamp formation underlying each of the 40-acre tracts comprising the proposed non-standard spacing unit area. Cimarex seeks administrative approval of this non-standard spacing unit to match the Communitization Agreement, to provide for efficient development, and to minimize surface disturbance by consolidating facilities and commingling production from existing and future wells in the proposed non-standard spacing unit. Approval of this administrative application will allow for full development of the communitized acreage, promote efficiently located surface facilities, reduce surface disturbance, consolidate roads, tanks and pipelines; and promote effective well spacing.

A tract map is attached hereto as **Exhibit B**. Also included in Exhibit B is a map comparing and contrasting the standard versus non-standard unit scenario, a tract map showing the approximate Well locations, and a list of the Wells.

Exhibit C is a letter from reservoir engineer explaining the need for a non-standard unit and the benefits associated with a non-standard, as opposed to standard, unit. Exhibit C includes three attachments that compare and contrast the standard versus non-standard unit scenario.

Cimarex is providing notice to all affected parties in the tracts that adjoin the proposed non-standard spacing unit, and the New Mexico State Land Office and the Bureau of Land Management. A chart identifying the offset affected parties, as well as proof of mailing notice of the application (including a copy of the application) to affected persons entitled to notice is attached hereto as **Exhibit D**. Also included in Exhibit D is a map identifying the affected tracts and ownership for notice purposes.

Your attention to this matter is appreciated.

Sincerely,



Deana M. Bennett
*Attorneys for Cimarex
Energy Co.*

District I
1625 N. French Dr., Hobbs, NM 88240
Phone: (575) 393-6161 Fax: (575) 393-0720
District II
811 S. First St., Artesia, NM 88210
Phone: (575) 748-1283 Fax: (575) 748-9720
District III
1000 Rio Brazos Road, Aztec, NM 87410
Phone: (505) 334-6178 Fax: (505) 334-6170
District IV
1220 S. St. Francis Dr., Santa Fe, NM 87505
Phone: (505) 476-3460 Fax: (505) 476-3462

State of New Mexico
Energy, Minerals & Natural Resources Department
OIL CONSERVATION DIVISION
1220 South St. Francis Dr.
Santa Fe, NM 87505

Form C-102
Revised August 1, 2011
Submit one copy to appropriate
District Office

☐ AMENDED REPORT

WELL LOCATION AND ACREAGE DEDICATION PLAT

¹ API Number 30-025-50783		² Pool Code 98094		³ Pool Name Bobcat Draw; Upper Wolfcamp	
⁴ Property Code		⁵ Property Name CASCADE 28 FEDERAL			⁶ Well Number 29H
⁷ OGRID No. 215099		⁸ Operator Name CIMAREX ENERGY CO.			⁹ Elevation 3385.3'

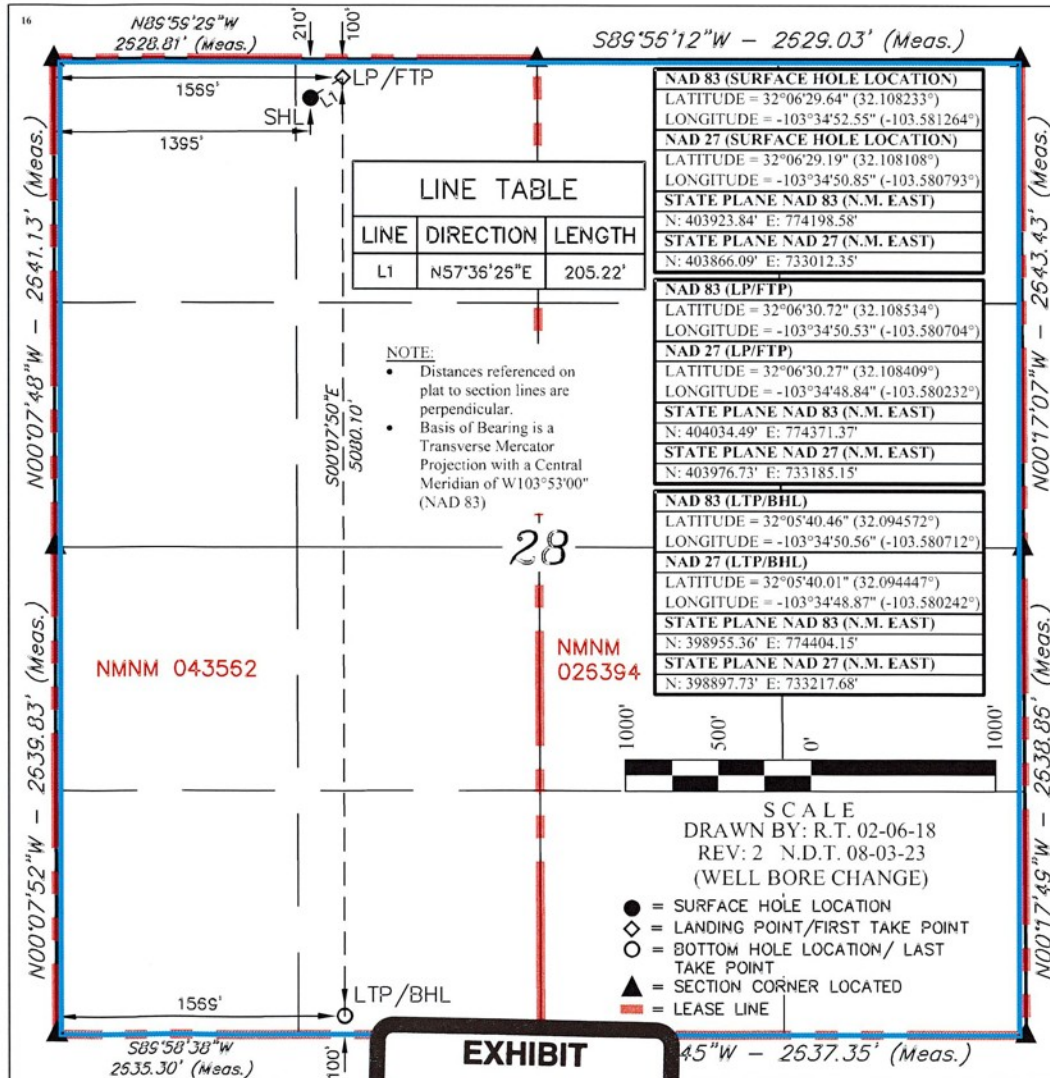
¹⁰ Surface Location

UL or lot no.	Section	Township	Range	Lot Idn	Feet from the	North/South line	Feet from the	East/West line	County
C	28	25S	33E		210	NORTH	1395	WEST	LEA

¹¹ Bottom Hole Location If Different From Surface

UL or lot no.	Section	Township	Range	Lot Idn	Feet from the	North/South line	Feet from the	East/West line	County
N	28	25S	33E		100	SOUTH	1569	WEST	LEA
¹² Dedicated Acres 640		¹³ Joint or Infill		¹⁴ Consolidation Code		¹⁵ Order No.			

No allowable will be assigned to this completion until all interests have been consolidated or a non-standard unit has been approved by the division.



¹⁷ OPERATOR
CERTIFICATION

I hereby certify that the information contained herein is true and complete to the best of my knowledge and belief, and that this organization either owns a working interest or unleased mineral interest in the land including the proposed bottom hole location or has a right to drill this well at this location pursuant to a contract with an owner of such a mineral or working interest, or to a voluntary pooling agreement or a compulsory pooling order heretofore entered by the division.

Shelly Bowen 10/11/23
Signature Date

Shelly Bowen
Printed Name

Shelly.Bowen@coterra.com
E-mail Address

¹⁸ SURVEYOR
CERTIFICATION

I hereby certify that the well location shown on this plat was plotted from field notes of actual surveys made by me or under my supervision, and that the same is true and correct to the best of my belief.

January 24, 2018

Date of Survey
Signature and Seal of Professional Surveyor:



Certificate Number:



District I
1625 N. French Dr., Hobbs, NM 88240
Phone: (575) 393-6161 Fax: (575) 393-0720
District II
811 S. First St., Artesia, NM 88210
Phone: (575) 748-1283 Fax: (575) 748-9720
District III
1000 Rio Brazos Road, Aztec, NM 87410
Phone: (505) 334-6178 Fax: (505) 334-6170
District IV
1220 S. St. Francis Dr., Santa Fe, NM 87505
Phone: (505) 476-3460 Fax: (505) 476-3462

State of New Mexico
Energy, Minerals & Natural Resources Department
OIL CONSERVATION DIVISION
1220 South St. Francis Dr.
Santa Fe, NM 87505

Form C-102
Revised August 1, 2011
Submit one copy to appropriate
District Office

☐ AMENDED REPORT

WELL LOCATION AND ACREAGE DEDICATION PLAT

¹ Well Number 30-025-50104	² Pool Code 98094	³ Pool Name Bobcat Draw; Upper Wolfcamp
⁴ Property Code	⁵ Property Name CASCADE 28 FEDERAL	⁶ Well Number 30H
⁷ OGRID No. 215099	⁸ Operator Name CIMAREX ENERGY CO.	⁹ Elevation 3385.3'

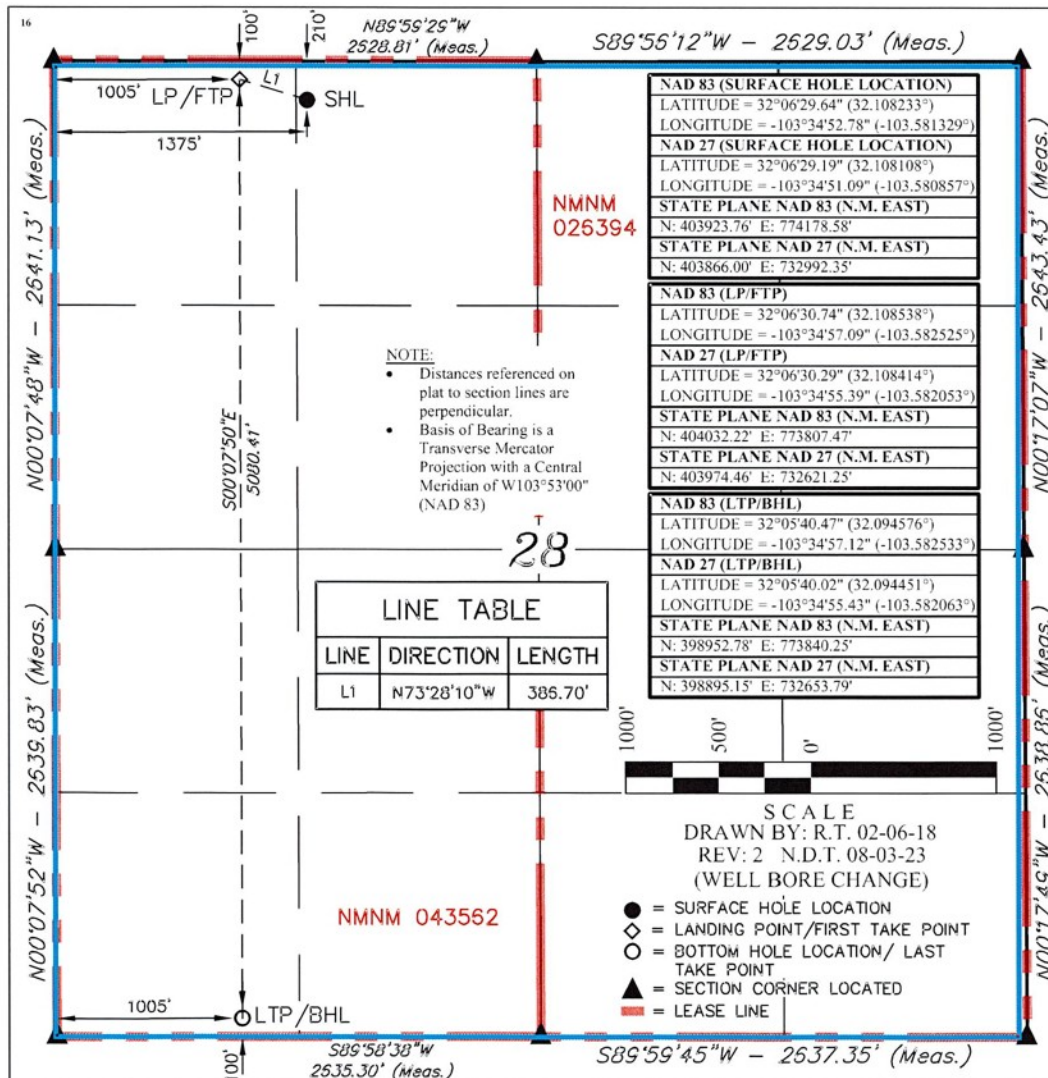
¹⁰ Surface Location

UL or lot no.	Section	Township	Range	Lot Idn	Feet from the	North/South line	Feet from the	East/West line	County
C	28	25S	33E		210	NORTH	1375	WEST	LEA

¹¹ Bottom Hole Location If Different From Surface

UL or lot no.	Section	Township	Range	Lot Idn	Feet from the	North/South line	Feet from the	East/West line	County
M	28	25S	33E		100	SOUTH	1005	WEST	LEA
¹² Dedicated Acres 640	¹³ Joint or Infill	¹⁴ Consolidation Code	¹⁵ Order No.						

No allowable will be assigned to this completion until all interests have been consolidated or a non-standard unit has been approved by the division.



¹⁷ OPERATOR
CERTIFICATION

I hereby certify that the information contained herein is true and complete to the best of my knowledge and belief, and that this organization either owns a working interest or unleased mineral interest in the land including the proposed bottom hole location or has a right to drill this well at this location pursuant to a contract with an owner of such a mineral or working interest, or to a voluntary pooling agreement or a compulsory pooling order heretofore entered by the division.

Shelly Bowen 10/11/23
Signature Date

Shelly Bowen
Printed Name

Shelly.Bowen@coterra.com
E-mail Address

¹⁸ SURVEYOR
CERTIFICATION

I hereby certify that the well location shown on this plat was plotted from field notes of actual surveys made by me or under my supervision, and that the same is true and correct to the best of my belief.

January 24, 2018

Date of Survey
Signature and Seal of Professional Surveyor:



Certificate Number:

District I
1625 N. French Dr., Hobbs, NM 88240
Phone: (575) 393-6161 Fax: (575) 393-0720
District II
811 S. First St., Artesia, NM 88210
Phone: (575) 748-1283 Fax: (575) 748-9720
District III
1000 Rio Brazos Road, Aztec, NM 87410
Phone: (505) 334-6178 Fax: (505) 334-6170
District IV
1220 S. St. Francis Dr., Santa Fe, NM 87505
Phone: (505) 476-3460 Fax: (505) 476-3462

State of New Mexico
Energy, Minerals & Natural Resources Department
OIL CONSERVATION DIVISION
1220 South St. Francis Dr.
Santa Fe, NM 87505

Form C-102
Revised August 1, 2011
Submit one copy to appropriate
District Office

☐ AMENDED REPORT

WELL LOCATION AND ACREAGE DEDICATION PLAT

¹ API Number 30-025-50105	² Pool Code 98094	³ Pool Name Bobcat Draw; Upper Wolfcamp
⁴ Property Code	⁵ Property Name CASCADE 28 FEDERAL	⁶ Well Number 31H
⁷ OGRID No. 215099	⁸ Operator Name CIMAREX ENERGY CO.	⁹ Elevation 3385.3'

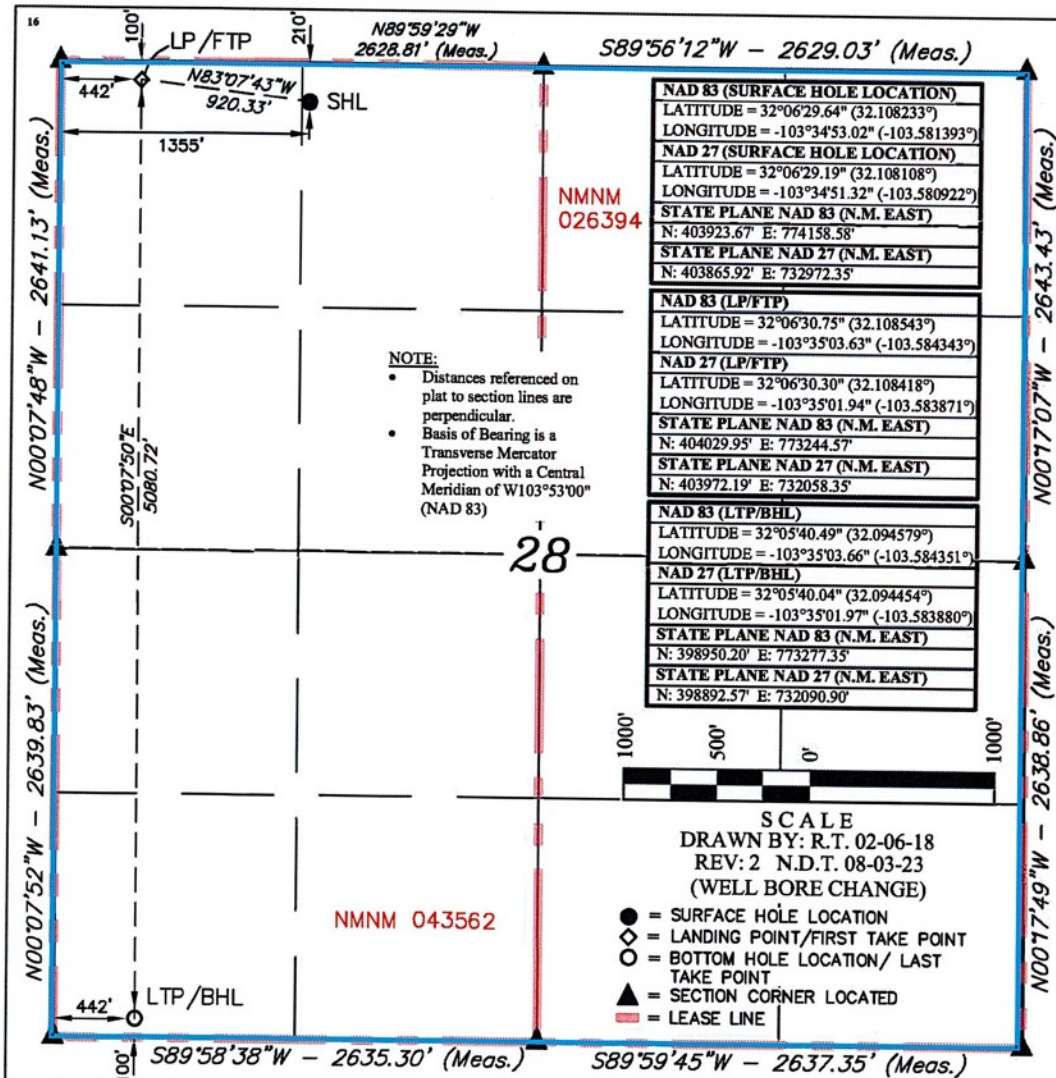
¹⁰ Surface Location

UL or lot no.	Section	Township	Range	Lot Idn	Feet from the	North/South line	Feet from the	East/West line	County
C	28	25S	33E		210	NORTH	1355	WEST	LEA

¹¹ Bottom Hole Location If Different From Surface

UL or lot no.	Section	Township	Range	Lot Idn	Feet from the	North/South line	Feet from the	East/West line	County
M	28	25S	33E		100	SOUTH	442	WEST	LEA
¹² Dedicated Acres 640	¹³ Joint or Infill	¹⁴ Consolidation Code	¹⁵ Order No.						

No allowable will be assigned to this completion until all interests have been consolidated or a non-standard unit has been approved by the division.



¹⁷ OPERATOR CERTIFICATION

I hereby certify that the information contained herein is true and complete to the best of my knowledge and belief, and that this organization either owns a working interest or unleased mineral interest in the land including the proposed bottom hole location or has a right to drill this well at this location pursuant to a contract with an owner of such a mineral or working interest, or to a voluntary pooling agreement or a compulsory pooling order heretofore entered by the division.

Shelly Bowen 10/11/23
Signature Date

Shelly Bowen
Printed Name

Shelly.Bowen@coterra.com
E-mail Address

¹⁸ SURVEYOR CERTIFICATION

I hereby certify that the well location shown on this plat was plotted from field notes of actual surveys made by me or under my supervision, and that the same is true and correct to the best of my belief.

January 24, 2018

Date of Survey
Signature and Seal of Professional Surveyor:



Certificate Number:

District I
1625 N. French Dr., Hobbs, NM 88240
Phone: (575) 393-6161 Fax: (575) 393-0720
District II
811 S. First St., Artesia, NM 88210
Phone: (575) 748-1283 Fax: (575) 748-9720
District III
1000 Rio Brazos Road, Aztec, NM 87410
Phone: (505) 334-6178 Fax: (505) 334-6170
District IV
1220 S. St. Francis Dr., Santa Fe, NM 87505
Phone: (505) 476-3460 Fax: (505) 476-3462

State of New Mexico
Energy, Minerals & Natural Resources Department
OIL CONSERVATION DIVISION
1220 South St. Francis Dr.
Santa Fe, NM 87505

Form C-102
Revised August 1, 2011
Submit one copy to appropriate
District Office

☐ AMENDED REPORT

WELL LOCATION AND ACREAGE DEDICATION PLAT

¹ API Number	² Pool Code 98094	³ Pool Name BOBCAT DRAW; UPPER WOLFCAMP
⁴ Property Code 314104	⁵ Property Name CASCADE 28 FEDERAL	⁶ Well Number 403H
⁷ OGRID No. 215099	⁸ Operator Name CIMAREX ENERGY CO.	⁹ Elevation 3374.1'

¹⁰ Surface Location

UL or lot no.	Section	Township	Range	Lot Idn	Feet from the	North/South line	Feet from the	East/West line	County
B	28	25S	33E		210	NORTH	2079	EAST	LEA

¹¹ Bottom Hole Location If Different From Surface

UL or lot no.	Section	Township	Range	Lot Idn	Feet from the	North/South line	Feet from the	East/West line	County
O	28	25S	33E		100	SOUTH	2584	EAST	LEA
¹² Dedicated Acres 640	¹³ Joint or Infill	¹⁴ Consolidation Code	¹⁵ Order No.						

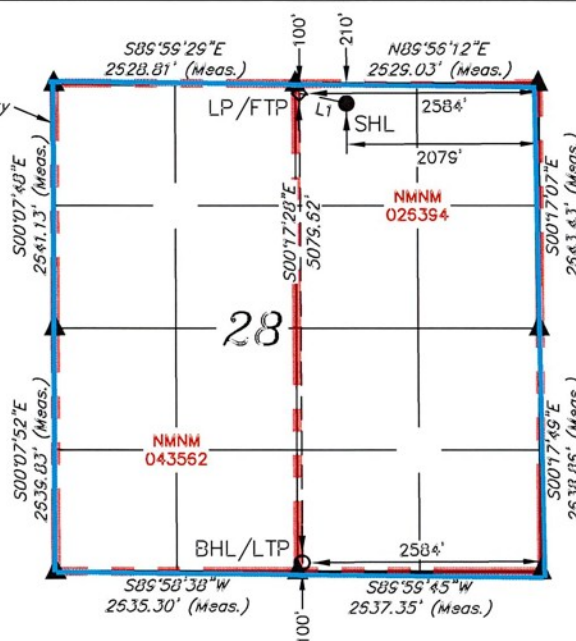
No allowable will be assigned to this completion until all interests have been consolidated or a non-standard unit has been approved by the division.

16

NOTE:

- Distances referenced on plat to section lines are perpendicular.
- Basis of Bearing is a Transverse Mercator Projection with a Central Meridian of W103°53'00"(NAD 83)

Lease Boundary



LINE TABLE		
LINE	DIRECTION	LENGTH
L1	N77°45'41\"W	515.97'

- = SURFACE HOLE LOCATION
- ◇ = LANDING POINT/FIRST TAKE POINT
- = BOTTOM HOLE LOCATION/ LAST TAKE POINT
- ▲ = SECTION CORNER LOCATED



SCALE

DRAWN BY: T.J.S. 03-10-23

NAD 83 (SURFACE HOLE LOCATION)
LATITUDE = 32°06'29.59\" (32.108220°)
LONGITUDE = 103°34'31.82\" (103.575505°)
NAD 27 (SURFACE HOLE LOCATION)
LATITUDE = 32°06'29.14\" (32.108095°)
LONGITUDE = 103°34'30.12\" (103.575034°)
STATE PLANE NAD 83 (N.M. EAST)
N: 403931.68' E: 775981.88'
STATE PLANE NAD 27 (N.M. EAST)
N: 403873.93' E: 734795.63'

NAD 83 (LP/FTP)
LATITUDE = 32°06'30.69\" (32.108525°)
LONGITUDE = 103°34'37.69\" (103.577135°)
NAD 27 (LP/FTP)
LATITUDE = 32°06'30.24\" (32.108400°)
LONGITUDE = 103°34'35.99\" (103.576664°)
STATE PLANE NAD 83 (N.M. EAST)
N: 404038.99' E: 775476.26'
STATE PLANE NAD 27 (N.M. EAST)
N: 403981.23' E: 734290.03'

NAD 83 (BHL/LTP)
LATITUDE = 32°05'40.43\" (32.094564°)
LONGITUDE = 103°34'37.56\" (103.577099°)
NAD 27 (BHL/LTP)
LATITUDE = 32°05'39.98\" (32.094440°)
LONGITUDE = 103°34'35.86\" (103.576628°)
STATE PLANE NAD 83 (N.M. EAST)
N: 398960.46' E: 775523.26'
STATE PLANE NAD 27 (N.M. EAST)
N: 398902.83' E: 734336.79'

¹⁷ OPERATOR CERTIFICATION

I hereby certify that the information contained herein is true and complete to the best of my knowledge and belief, and that this organization either owns a working interest or unleased mineral interest in the land including the proposed bottom hole location or has a right to drill this well at this location pursuant to a contract with an owner of such a mineral or working interest, or to a voluntary pooling agreement or a compulsory pooling order heretofore entered by the division.

Shelly M. Bowen 7/10/23

Signature Date

Shelly M. Bowen

Printed Name

shelly.bowen@coterra.com

E-mail Address

¹⁸ SURVEYOR CERTIFICATION

I hereby certify that the well location shown on this plat was plotted from field notes of actual surveys made by me or under my supervision, and that the same is true and correct to the best of my belief.

January 24, 2018

Date of Survey

Signature and Seal of Professional Surveyor:



Certificate Number:

District I
1625 N. French Dr., Hobbs, NM 88240
Phone: (575) 393-6161 Fax: (575) 393-0720

District II
811 S. First St., Artesia, NM 88210
Phone: (575) 748-1283 Fax: (575) 748-9720

District III
1000 Rio Brazos Road, Aztec, NM 87410
Phone: (505) 334-6178 Fax: (505) 334-6170

District IV
1220 S. St. Francis Dr., Santa Fe, NM 87505
Phone: (505) 476-3460 Fax: (505) 476-3462

State of New Mexico
Energy, Minerals & Natural Resources Department
OIL CONSERVATION DIVISION
1220 South St. Francis Dr.
Santa Fe, NM 87505

Form C-102
Revised August 1, 2011
Submit one copy to appropriate
District Office

☐ AMENDED REPORT

WELL LOCATION AND ACREAGE DEDICATION PLAT

¹ API Number		² Pool Code 98094	³ Pool Name BOBCAT DRAW; UPPER WOLFCAMP
⁴ Property Code 314104	⁵ Property Name CASCADE 28 FEDERAL		⁶ Well Number 404H
⁷ OGRID No. 215099	⁸ Operator Name CIMAREX ENERGY CO.		⁹ Elevation 3373.1'

¹⁰Surface Location

UL or lot no. B	Section 28	Township 25S	Range 33E	Lot Idn	Feet from the 210	North/South line NORTH	Feet from the 2039	East/West line EAST	County LEA
--------------------	---------------	-----------------	--------------	---------	----------------------	---------------------------	-----------------------	------------------------	---------------

"Bottom Hole Location If Different From Surface

UL or lot no. O	Section 28	Township 25S	Range 33E	Lot Idn	Feet from the 100	North/South line SOUTH	Feet from the 1457	East/West line EAST	County LEA
--------------------	---------------	-----------------	--------------	---------	----------------------	---------------------------	-----------------------	------------------------	---------------

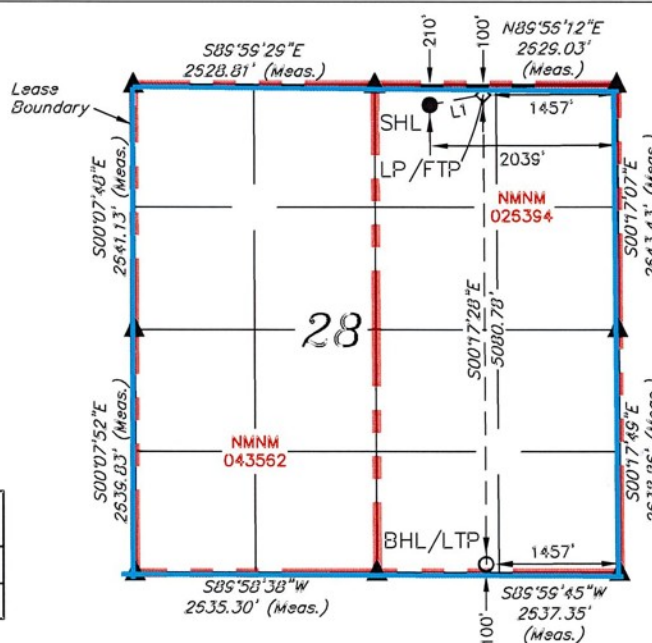
¹² Dedicated Acres 640	¹³ Joint or Infill	¹⁴ Consolidation Code	¹⁵ Order No.
--------------------------------------	-------------------------------	----------------------------------	-------------------------

No allowable will be assigned to this completion until all interests have been consolidated or a non-standard unit has been approved by the division.

16

NOTE:

- Distances referenced on plat to section lines are perpendicular.
- Basis of Bearing is a Transverse Mercator Projection with a Central Meridian of W103°53'00"(NAD 83)



LINE TABLE		
LINE	DIRECTION	LENGTH
L1	N79°13'54"E	592.19'

- = SURFACE HOLE LOCATION
- ◇ = LANDING POINT/FIRST TAKE POINT
- = BOTTOM HOLE LOCATION/
LAST TAKE POINT
- ▲ = SECTION CORNER LOCATED



SCALE
DRAWN BY: T.J.S. 03-10-23

NAD 83 (SURFACE HOLE LOCATION)
LATITUDE = 32°06'29.59" (32.108220°)
LONGITUDE = 103°34'31.35" (103.575376°)
NAD 27 (SURFACE HOLE LOCATION)
LATITUDE = 32°06'29.14" (32.108095°)
LONGITUDE = 103°34'29.66" (103.574905°)
STATE PLANE NAD 83 (N.M. EAST)
N: 403931.89' E: 776021.87'
STATE PLANE NAD 27 (N.M. EAST)
N: 403874.14' E: 734835.62'

NAD 83 (LP/FTP)
LATITUDE = 32°06'30.67" (32.108519°)
LONGITUDE = 103°34'24.59" (103.573496°)
NAD 27 (LP/FTP)
LATITUDE = 32°06'30.22" (32.108395°)
LONGITUDE = 103°34'22.89" (103.573025°)
STATE PLANE NAD 83 (N.M. EAST)
N: 404044.94' E: 776603.06'
STATE PLANE NAD 27 (N.M. EAST)
N: 403987.19' E: 735416.82'

NAD 83 (BHL/LTP)
LATITUDE = 32°05'40.40" (32.094556°)
LONGITUDE = 103°34'24.46" (103.573460°)
NAD 27 (BHL/LTP)
LATITUDE = 32°05'39.95" (32.094431°)
LONGITUDE = 103°34'22.76" (103.572990°)
STATE PLANE NAD 83 (N.M. EAST)
N: 398965.24' E: 776650.08'
STATE PLANE NAD 27 (N.M. EAST)
N: 398907.62' E: 735463.59'

17 OPERATOR CERTIFICATION

I hereby certify that the information contained herein is true and complete to the best of my knowledge and belief, and that this organization either owns a working interest or unleased mineral interest in the land including the proposed bottom hole location or has a right to drill this well at this location pursuant to a contract with an owner of such a mineral or working interest, or to a voluntary pooling agreement or a compulsory pooling order heretofore entered by the division.

Shelly M. Bowen 7/10/23

Signature
Date

Shelly M. Bowen

Printed Name

shelly.bowen@coterra.com

E-mail Address

18 SURVEYOR CERTIFICATION

I hereby certify that the well location shown on this plat was plotted from field notes of actual surveys made by me or under my supervision, and that the same is true and correct to the best of my belief.

January 24, 2018

Date of Survey

Signature and Seal of Professional Surveyor:



Certificate Number:

District I
1625 N. French Dr., Hobbs, NM 88240
Phone: (575) 393-6161 Fax: (575) 393-0720
District II
811 S. First St., Artesia, NM 88210
Phone: (575) 748-1283 Fax: (575) 748-9720
District III
1000 Rio Brazos Road, Aztec, NM 87410
Phone: (505) 334-6178 Fax: (505) 334-6170
District IV
1220 S. St. Francis Dr., Santa Fe, NM 87505
Phone: (505) 476-3460 Fax: (505) 476-3462

State of New Mexico
Energy, Minerals & Natural Resources Department
OIL CONSERVATION DIVISION
1220 South St. Francis Dr.
Santa Fe, NM 87505

Form C-102
Revised August 1, 2011
Submit one copy to appropriate
District Office

☐ AMENDED REPORT

WELL LOCATION AND ACREAGE DEDICATION PLAT

¹ API Number	² Pool Code 98094	³ Pool Name BOBCAT DRAW; UPPER WOLFCAMP
⁴ Property Code 314104	⁵ Property Name CASCADE 28 FEDERAL	⁶ Well Number 412H
⁷ OGRID No. 215099	⁸ Operator Name CIMAREX ENERGY CO.	⁹ Elevation 3374.2'

¹⁰ Surface Location

UL or lot no.	Section	Township	Range	Lot Idn	Feet from the	North/South line	Feet from the	East/West line	County
B	28	25S	33E		210	NORTH	2099	EAST	LEA

¹¹ Bottom Hole Location If Different From Surface

UL or lot no.	Section	Township	Range	Lot Idn	Feet from the	North/South line	Feet from the	East/West line	County
N	28	25S	33E		100	SOUTH	2132	WEST	LEA
¹² Dedicated Acres 640	¹³ Joint or Infill	¹⁴ Consolidation Code	¹⁵ Order No.						

No allowable will be assigned to this completion until all interests have been consolidated or a non-standard unit has been approved by the division.

¹⁶

NOTE:

- Distances referenced on plat to section lines are perpendicular.
- Basis of Bearing is a Transverse Mercator Projection with a Central Meridian of W103°53'00"(NAD 83)

¹⁷ OPERATOR CERTIFICATION

I hereby certify that the information contained herein is true and complete to the best of my knowledge and belief, and that this organization either owns a working interest or unleased mineral interest in the land including the proposed bottom hole location or has a right to drill this well at this location pursuant to a contract with an owner of such a mineral or working interest, or to a voluntary pooling agreement or a compulsory pooling order heretofore entered by the division.

Shelly M. Bowen 7/10/23

Signature Date

Shelly M. Bowen

Printed Name

shelly.bowen@coterra.com

E-mail Address

LINE TABLE

LINE	DIRECTION	LENGTH
L1	N83°55'00"W	1033.15'

¹⁸ SURVEYOR CERTIFICATION

I hereby certify that the well location shown on this plat was plotted from field notes of actual surveys made by me or under my supervision, and that the same is true and correct to the best of my belief.

January 24, 2018

Date of Survey

Signature and Seal of Professional Surveyor:

Certificate Number:

● = SURFACE HOLE LOCATION
◇ = LANDING POINT/FIRST TAKE POINT
○ = BOTTOM HOLE LOCATION/
LAST TAKE POINT
▲ = SECTION CORNER LOCATED

NAD 83 (SURFACE HOLE LOCATION)	NAD 83 (LP/FTP)	NAD 83 (BHL/LTP)
LATITUDE = 32°06'29.59" (32.108220°)	LATITUDE = 32°06'30.70" (32.108529°)	LATITUDE = 32°05'40.45" (32.094568°)
LONGITUDE = 103°34'32.05" (103.575570°)	LONGITUDE = 103°34'43.99" (103.578886°)	LONGITUDE = 103°34'44.02" (103.578895°)
NAD 27 (SURFACE HOLE LOCATION)	NAD 27 (LP/FTP)	NAD 27 (BHL/LTP)
LATITUDE = 32°06'29.14" (32.108095°)	LATITUDE = 32°06'30.26" (32.108404°)	LATITUDE = 32°05'40.00" (32.094443°)
LONGITUDE = 103°34'30.35" (103.575098°)	LONGITUDE = 103°34'42.29" (103.578415°)	LONGITUDE = 103°34'42.33" (103.578424°)
STATE PLANE NAD 83 (N.M. EAST)	STATE PLANE NAD 83 (N.M. EAST)	STATE PLANE NAD 83 (N.M. EAST)
N: 403931.57' E: 775961.88'	N: 404036.75' E: 774934.27'	N: 398957.93' E: 774967.05'
STATE PLANE NAD 27 (N.M. EAST)	STATE PLANE NAD 27 (N.M. EAST)	STATE PLANE NAD 27 (N.M. EAST)
N: 403873.82' E: 734775.64'	N: 403978.99' E: 733748.04'	N: 398900.30' E: 733780.58'

District I
1625 N. French Dr., Hobbs, NM 88240
Phone: (575) 393-6161 Fax: (575) 393-0720
District II
811 S. First St., Artesia, NM 88210
Phone: (575) 748-1283 Fax: (575) 748-9720
District III
1000 Rio Brazos Road, Aztec, NM 87410
Phone: (505) 334-6178 Fax: (505) 334-6170
District IV
1220 S. St. Francis Dr., Santa Fe, NM 87505
Phone: (505) 476-3460 Fax: (505) 476-3462

State of New Mexico
Energy, Minerals & Natural Resources Department
OIL CONSERVATION DIVISION
1220 South St. Francis Dr.
Santa Fe, NM 87505

Form C-102
Revised August 1, 2011
Submit one copy to appropriate
District Office

☐ AMENDED REPORT

WELL LOCATION AND ACREAGE DEDICATION PLAT

¹ API Number	² Pool Code 98094	³ Pool Name BOBCAT DRAW; UPPER WOLFCAMP
⁴ Property Code 314104	⁵ Property Name CASCADE 28 FEDERAL	⁶ Well Number 413H
⁷ OGRID No. 215099	⁸ Operator Name CIMAREX ENERGY CO.	⁹ Elevation 3374.3'

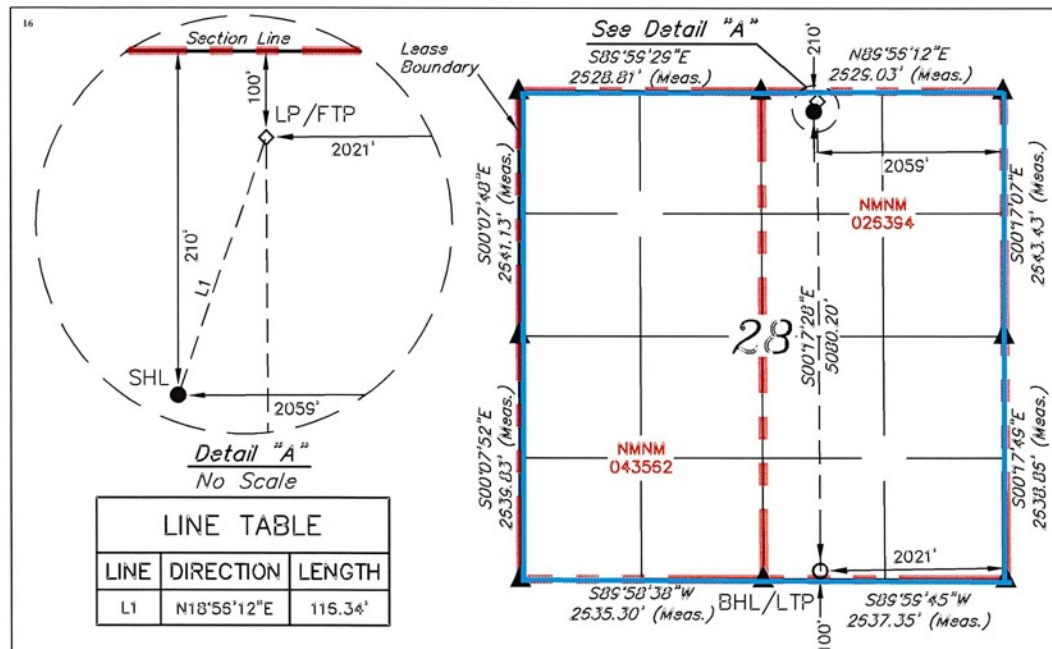
¹⁰ Surface Location

UL or lot no.	Section	Township	Range	Lot Idn	Feet from the	North/South line	Feet from the	East/West line	County
B	28	25S	33E		210	NORTH	2059	EAST	LEA

¹¹ Bottom Hole Location If Different From Surface

UL or lot no.	Section	Township	Range	Lot Idn	Feet from the	North/South line	Feet from the	East/West line	County
O	28	25S	33E		100	SOUTH	2021	WEST	LEA
¹² Dedicated Acres 640	¹³ Joint or Infill	¹⁴ Consolidation Code	¹⁵ Order No.						

No allowable will be assigned to this completion until all interests have been consolidated or a non-standard unit has been approved by the division.



- = SURFACE HOLE LOCATION
- ◇ = LANDING POINT/FIRST TAKE POINT
- = BOTTOM HOLE LOCATION/
LAST TAKE POINT
- ▲ = SECTION CORNER LOCATED

NOTE:

- Distances referenced on plat to section lines are perpendicular.
- Basis of Bearing is a Transverse Mercator Projection with a Central Meridian of W103°53'00" (NAD 83)



SCALE
DRAWN BY: T.J.S. 03-10-23

NAD 83 (SURFACE HOLE LOCATION)
LATITUDE = 32°06'29.59" (32.108220°)
LONGITUDE = 103°34'31.59" (103.575440°)
NAD 27 (SURFACE HOLE LOCATION)
LATITUDE = 32°06'29.14" (32.108095°)
LONGITUDE = 103°34'29.90" (103.574971°)
STATE PLANE NAD 83 (N.M. EAST)
N: 403931.78' E: 776001.78'
STATE PLANE NAD 27 (N.M. EAST)
N: 403874.03' E: 734815.63'

NAD 83 (LP/FTP)
LATITUDE = 32°06'30.68" (32.108522°)
LONGITUDE = 103°34'31.14" (103.575318°)
NAD 27 (LP/FTP)
LATITUDE = 32°06'30.23" (32.108397°)
LONGITUDE = 103°34'29.45" (103.574846°)
STATE PLANE NAD 83 (N.M. EAST)
N: 404041.96' E: 776039.16'
STATE PLANE NAD 27 (N.M. EAST)
N: 403984.21' E: 734852.92'

NAD 83 (BHL/LTP)
LATITUDE = 32°05'40.42" (32.094560°)
LONGITUDE = 103°34'31.01" (103.575281°)
NAD 27 (BHL/LTP)
LATITUDE = 32°05'39.97" (32.094435°)
LONGITUDE = 103°34'29.32" (103.574811°)
STATE PLANE NAD 83 (N.M. EAST)
N: 398962.85' E: 776086.17'
STATE PLANE NAD 27 (N.M. EAST)
N: 398905.22' E: 734899.69'

¹⁷ OPERATOR CERTIFICATION

I hereby certify that the information contained herein is true and complete to the best of my knowledge and belief, and that this organization either owns a working interest or unleased mineral interest in the land including the proposed bottom hole location or has a right to drill this well at this location pursuant to a contract with an owner of such a mineral or working interest, or to a voluntary pooling agreement or a compulsory pooling order heretofore entered by the division.

Shelly M. Bowen 7/10/23

Signature Date

Shelly M. Bowen

Printed Name

shelly.bowen@coterra.com

E-mail Address

¹⁸ SURVEYOR CERTIFICATION

I hereby certify that the well location shown on this plat was plotted from field notes of actual surveys made by me or under my supervision, and that the same is true and correct to the best of my belief.

January 24, 2018

Date of Survey
Signature and Seal of Professional Surveyor:



Certificate Number:

Cascade 28 Fed Com Area

Proposed Non-Standard Horizontal Spacing Unit
Section 28, Township 25 South, Range 33 East: All
640.00 Acres

**CASCADE 28
T25S/R33E, LEA CO., NM**

Tract 1:
NMNM 043562
Federal
320.00 Acres



Tract 2:
NMNM 026394
Federal
320.00 Acres

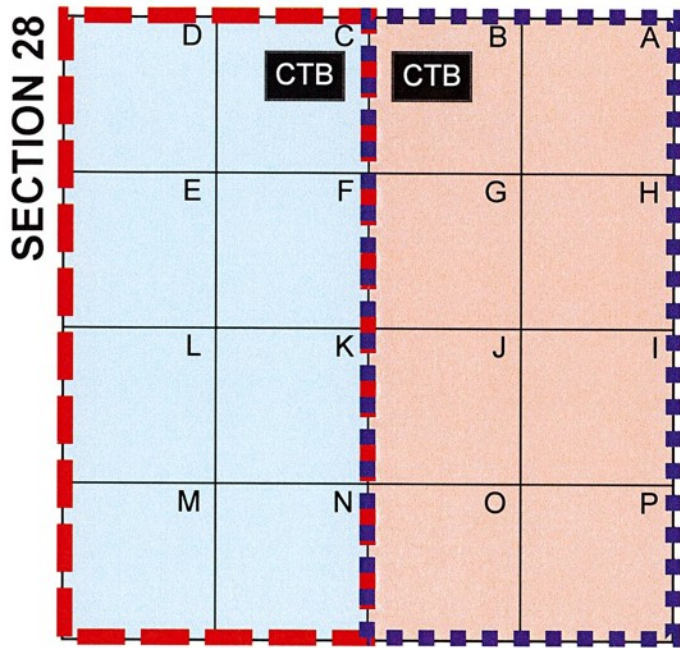
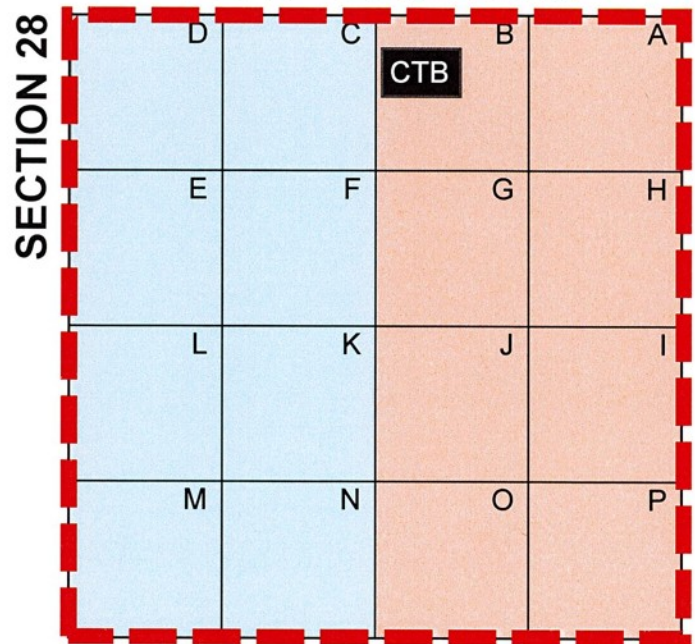
SECTION 28


D	C	B	A
E	F	G	H
L	K	J	I
M	N	O	P




Cascade 28 Fed Com Area

Standard Spacing Unit v. Non-Standard Spacing Unit

CASCADE 28
T25S/R33E, LEA CO., NM**Standard****Non-Standard**


 Tract 1:
NMNM 043562
Federal
320.00 Acres


 Tract 2:
NMNM 026394
Federal
320.00 Acres

Cascade 28 Fed Com Area

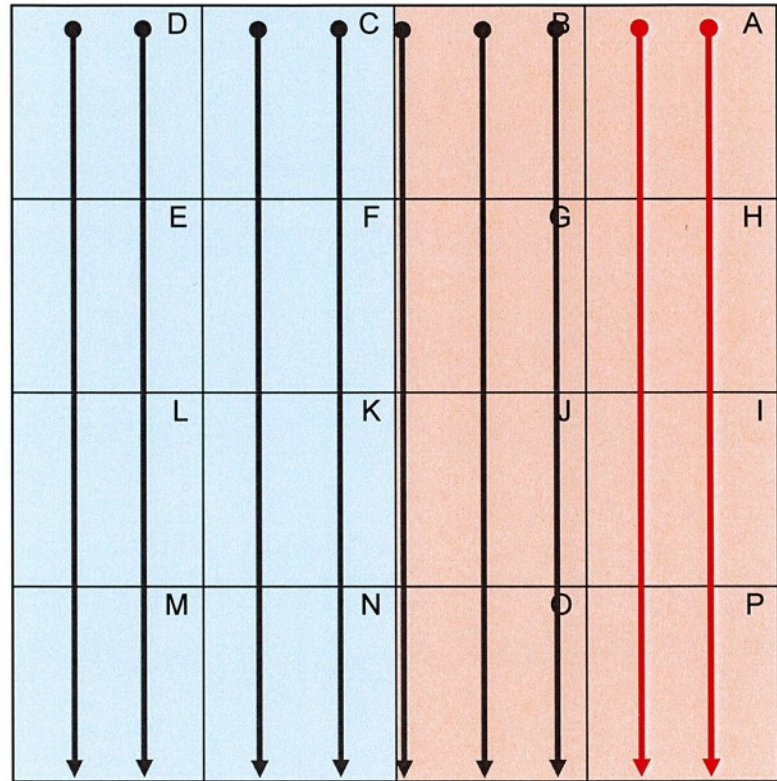
Wolfcamp Development


CASCADE 28
T25S/R33E, LEA CO., NM

 **Tract 1:**
NMNM 043562
Federal
320.00 Acres

 **Tract 2:**
NMNM 026394
Federal
320.00 Acres

SECTION 28



 Existing Wells

 Planned Development (2024)

Cascade 28 Fed Com Area

Well List with Pool Code

Wolfcamp: Bobcat Draw; Upper Wolfcamp (Pool Code: 98094)

<u>Well:</u>	<u>API:</u>	<u>Status:</u>
Cascade 28 Fed 29H	30-025-50783	Proposed
Cascade 28 Fed 30H	30-025-50104	Proposed
Cascade 28 Fed 31H	30-025-50105	Proposed
Cascade 28 Fed 403H	Pending	Proposed
Cascade 28 Fed 404H	Pending	Proposed
Cascade 28 Fed 412H	Pending	Proposed
Cascade 28 Fed 413H	Pending	Proposed

Cimarex Energy Co.
6001 Deauville Blvd
Suite 300 N
Midland, TX 79706
MAIN 432.571.7800



Cimarex Energy Co. is a subsidiary of Coterra Energy Inc.

April 17, 2024

VIA E-FILING

Director Fuge and OCD Engineering Bureau
Oil Conservation Division
Energy, Minerals and Natural Resources Department
1220 South Saint Francis Drive
Santa Fe, New Mexico 87505

Re: Application of Cimarex Energy Co. for administrative approval of a 640-acre, more or less, non-standard spacing unit in the Wolfcamp Formation comprised of Section 28, Township 25 South, Range 33 East, Lea County, New Mexico.

Dear Director Fuge/OCD Engineering Bureau

Cimarex Energy Co., OGRID Number 215099, respectfully requests administrative approval of a 640-acre, more or less, non-standard unit ("NSU") comprised of all of Section 28, Township 25 South, Range 33 East, Lea County, New Mexico. The Wells target the Wolfcamp formation and the only pool within the Wolfcamp formation underlying the proposed non-standard spacing unit is Bobcat Draw; Upper Wolfcamp (Code 98094), which follows the statewide spacing rules.

The NSU would be dedicated to the following wells (the "Wells"):

<u>Well Name</u>	<u>API Number</u>
Cascade 28 Federal 29H	(30-025-50783)
Cascade 28 Federal 30H	(30-025-50104)
Cascade 28 Federal 31H	(30-025-50105)
Cascade 28 Federal 403H	(Pending)
Cascade 28 Federal 404H	(Pending)
Cascade 28 Federal 412H	(Pending)
Cascade 28 Federal 413H	(Pending)

C-102s for each well are attached hereto as **Exhibit A**. Each well will comply with the statewide setback requirements for the non-standard spacing unit.

If Cimarex were to follow the state-wide rules, Cimarex would have to have two units to have standard units. The two standard units would be a W/2 unit (using either the Cascade 28 Federal 29H well or the Cascade 28 Federal 30H as a proximity tract well) and an E/2 unit (using the Cascade 28 Federal



404H well as a proximity tract well). Under this approach, Cimarex would need to apply for a NSL for the Cascade 28 Federal 403H well. In this NSU application, Cimarex seeks a single 640-acre unit.

Cimarex seeks administrative approval of this non-standard spacing unit to match an existing Bureau of Land Management approved Communitization Agreement, to provide for efficient development, and to minimize surface disturbance by consolidating facilities and commingling production from wells in the proposed non-standard spacing unit. Accordingly, approval of this administrative application will allow for full development of the communitized acreage, promote efficiently located surface facilities, reduce surface disturbance, and consolidate roads, tanks and pipelines. In addition, approval of Cimarex's application promotes effective well spacing and will allow Cimarex to commingle production.

Conversely, if Cimarex's NSU application is not approved, Cimarex will need to construct additional flowlines, roads, an additional CTB, and will need additional third-party takeaway facilities. I have included Exhibits C-1 and C-2. Exhibit C-2 shows the limited facilities that are needed for a non-standard unit. Exhibit C-1 shows the additional required infrastructure needed if Cimarex has to develop the Wells using standard spacing (C-1).

Exhibit C-3 compares and contrasts, in table format, the reduced surface acreage and the cost savings that will occur if the NSU is approved. Developing the acreage as a single, non-standard unit will result in 7.5 acres less surface disturbance than if Cimarex has to develop the acreage using standard units. If Cimarex's NSU application is approved, that would eliminate the need to build an additional central tank battery, which effectively cuts permitted fugitive VOC emissions, spill risk, and flares in half. In addition, total capital costs would be significantly reduced because less infrastructure would be required to operate the single, non-standard unit.

In my opinion, approval of the NSU is in the best interest of conservation, prevention of waste, and protection of correlative rights.

Thank you for your consideration. Should you have any questions please contact me at Eddie.Behm@coterra.com or (432)-571-7865.

Sincerely,

A handwritten signature in blue ink, appearing to read 'Eddie Behm III', followed by a long horizontal flourish.

Eddie Behm III
Senior Reservoir Engineer
Cimarex Energy Co.
Coterra Energy Inc.

Surface Disturbance – Standard Spacing Unit – Exhibit C-1

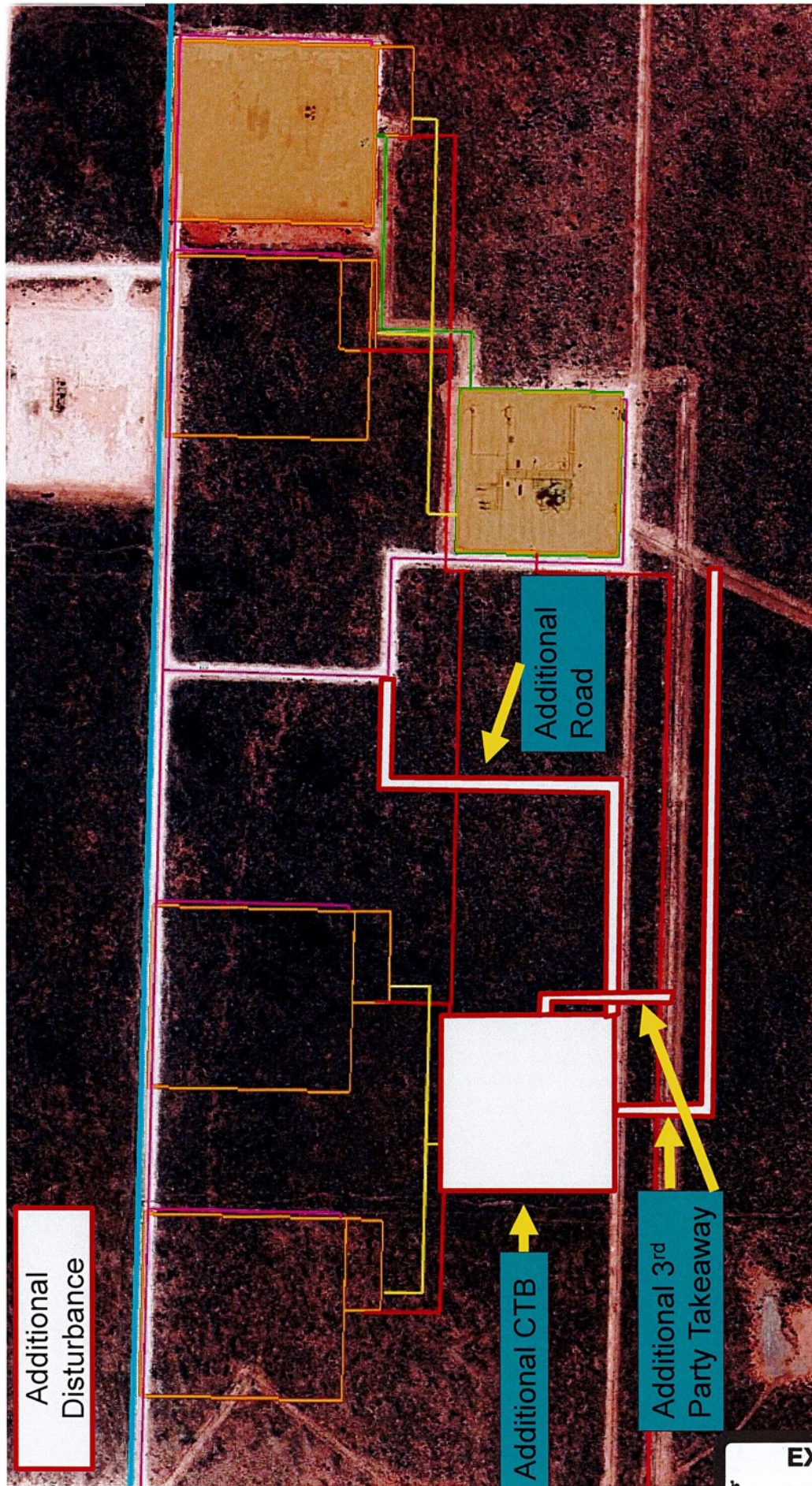


EXHIBIT
C-1

Surface Disturbance – Non-Standard Spacing Unit – Exhibit C-2



tabbles®

EXHIBIT
C.2

Environmental and Capital Savings – Exhibit C-3



Scenario	Design Basis per CTB (BOPD)	CTB/Equipment Cost (\$M)	Pipeline Cost (\$M)	Total Capital (\$M)	CTB and Pipeline Disturbance (Acres)
C-1 Standard Spacing Unit	20,000	\$10,000	\$3,000	\$13,000	14
C-2 Non-Standard Spacing Unit	20,000	\$9,000	\$2,700	\$11,700	6.5
Savings	-	\$1,000	\$300	\$1,300	7.5

- Approval of a non-standard unit will allow consolidation of all production into a single facility and will eliminate the need to build an additional central tank battery and flowlines. Elimination of the additional central tank battery effectively cuts permitted fugitive VOC emissions, spill risk, and flares in half.





April 19, 2024

Deana M. Bennett
505.848.1834
dmb@modrall.com

VIA CERTIFIED MAIL

TO AFFECTED PARTIES

Re: Application of Cimarex Energy Co. for administrative approval of a 640-acre, more or less, non-standard spacing unit in the Wolfcamp Formation comprised of Section 28, Township 25 South, Range 33 East, Lea County, New Mexico.

Dear Sir or Madam:

Enclosed is a copy of the above referenced application filed with the New Mexico Conservation Division on this date. Any objections that you have to this application must be filed in writing with the New Mexico Oil Conservation Division, 1220 South St. Francis Drive, Santa Fe, New Mexico 87505, within twenty (20) days from the date the Division receives the above referenced application. If no objection is received within this twenty-day period, the application may be approved administratively by the Division.

If you have any questions concerning this application, please contact:

Eddie Behm
Reservoir Engineer
Cimarex Energy Co.
Eddie.Behm@coterra.com
(432) 571-7865

Sincerely,


Deana M. Bennett
Attorney for Cimarex Energy Co.



Modrall Sperling
Roehl Harris & Sisk P.A.

500 Fourth Street NW
Suite 1000
Albuquerque,
New Mexico 87102

PO Box 2168
Albuquerque,
New Mexico 87103-2168

Tel: 505.848.1800
www.modrall.com

Cascade 28 Fed Com Area

Offset Ownership

T25S/R33E, LEA CO., NM

SECTION 20				SECTION 21				SECTION 22			
D	C	B	A	D	C	B	A	D	C	B	A
E	F	G	H	E	F	G	H	E	F	G	H
NMNM 026394				NMNM 026394				NMNM 015091			
L	K	J	I	L	K	J	I	L	K	J	I
M	N	O	P	M	N	O	P	M	N	O	P
								FEE			
D	C	B	A	D	C	B	A	D	C	B	A
E	F	G	H	E	F	G	H	E	F	G	H
NMNM 043562		NMNM 026394		NMNM 043562		NMNM 026394		NMNM 015091		FEE	
L	K	J	I	L	K	J	I	L	K	J	I
M	N	O	P	M	N	O	P	M	N	O	P
								NMNM 026080			
D	C	B	A	D	C	B	A	D	C	B	A
E	F	G	H	E	F	G	H	E	F	G	H
K0-1459-0001				NMNM 0024368A				NMNM 0005792			
L	K	J	I	L	K	J	I	L	K	J	I
M	N	O	P	M	N	O	P	M	N	O	P
				NMNM 0005792A				NMNM 119277			
				NMNM 0005792				NMNM 119277			

Cascade 28 Fed Com Area
Offset Ownership – Notice Table

Offsetting Section:	Operator:	Working Interest Owner(s) – N/A if Cimarex is NOT Operator:	Address(es):	Notice Sent:
Section 20, T25S/R33E	Cimarex Energy Co. (215099)	Cimarex Energy Co.	Cimarex Energy Co. 6001 Deauville Blvd., Suite 300N Midland, TX 79706	N/A
		OXY USA Inc. (16696)	OXY USA Inc. P.O. Box 4294 Houston, TX 77210	4/19/2024
Section 21, T25S/R33E	EOG Resources, Inc. (7377)	N/A	EOG Resources Inc. 5509 Champions Drive Midland, TX 79706	4/19/2024
Section 22, T25S/R33E	BTA Oil Producers, LLC (260297)	N/A	BTA Oil Producers, LLC 104 S Pecos St. Midland, TX 79701	4/19/2024
Section 27, T25S/R33E	BTA Oil Producers, LLC (260297)	N/A	BTA Oil Producers, LLC 104 S Pecos St. Midland, TX 79701	4/19/2024
Section 29, T25S/R33E	Cimarex Energy Co. (215099)	Cimarex Energy Co. (100%)	Cimarex Energy Co. 6001 Deauville Blvd., Suite 300N Midland, TX 79706	N/A
Section 32, T25S/R33E	Cimarex Energy Co. of Colorado (162683)	Grasslands Energy LP	Grasslands Energy LP Attn: Traci Tucker 5128 Apache Plume Rd., Suite 300 Fort Worth, TX 76109	4/19/2024
		Richard Scott Briggs	Richard Scott Briggs 1920 E Riverside Dr., Suite A-120 #505 Austin, TX 78741	4/19/2024
		Finley Production Co., LP	Finley Production Co., LP c/o Finley Resources Inc., Agent P.O. Box 2200 Fort Worth, TX 76113	4/19/2024
		COG Operating LLC (229137)	COG Operating LLC 600 W Illinois Ave. Midland, TX 79701	4/19/2024
		Concho Oil and Gas, LLC	Concho Oil and Gas, LLC 600 W Illinois Ave. Midland, TX 79701	4/19/2024
		CXA Oil & Gas Holdings, LP	CXA Oil & Gas Holdings, LP 1302 West Ave. Austin, TX 78701	4/19/2024
		Devon Energy Production Company, L.P.	Devon Energy Production Company, L.P. 333 West Sheridan Ave. Oklahoma City, OK 73102	4/19/2024
		Magnum Hunter Production, Inc. (Cimarex Subsidiary)	Magnum Hunter Production, Inc. 6001 Deauville Blvd., Suite 300N Midland, TX 79706	N/A
		BTA Oil Producers, LLC (260297)	BTA Oil Producers, LLC 104 S Pecos St. Midland, TX 79701	4/19/2024
Section 33, T25S/R33E	Cimarex Energy Co. of Colorado (162683)	Grasslands Energy LP	Grasslands Energy LP Attn: Traci Tucker 5128 Apache Plume Rd., Suite 300 Fort Worth, TX 76109	4/19/2024
		Richard Scott Briggs	Richard Scott Briggs 1920 E Riverside Dr., Suite A-120 #505 Austin, TX 78741	4/19/2024
		Finley Production Co., LP	Finley Production Co., LP c/o Finley Resources Inc., Agent P.O. Box 2200 Fort Worth, TX 76113	4/19/2024
		COG Operating LLC (229137)	COG Operating LLC 600 W Illinois Ave. Midland, TX 79701	4/19/2024
		Concho Oil and Gas, LLC	Concho Oil and Gas, LLC 600 W Illinois Ave. Midland, TX 79701	4/19/2024

		CXA Oil & Gas Holdings, LP	CXA Oil & Gas Holdings, LP 1302 West Ave. Austin, TX 78701	4/19/2024
		Devon Energy Production Company, L.P. (6137)	Devon Energy Production Company, L.P. 333 West Sheridan Ave. Oklahoma City, OK 73102	4/19/2024
		Magnum Hunter Production, Inc. (Cimarex Subsidiary)	Magnum Hunter Production, Inc. 6001 Deauville Blvd., Suite 300N Midland, TX 79706	N/A
Section 34, T25S/R33E	BTA Oil Producers, LLC (260297)	N/A	BTA Oil Producers, LLC 104 S Pecos St. Midland, TX 79701	4/19/2024
	COG Operating LLC (229137)		COG Operating LLC 600 W Illinois Ave. Midland, TX 79701	4/19/2024

Government Agency(ies) Receiving Notice:

Offsetting Mineral Ownership:	Address(es):	Notice Sent:
Federal (Sections 20, 21, 22, 27, 28, 29, 33, and 34)	Bureau of Land Management 301 Dinosaur Trail Santa Fe, NM 87508	4/19/2024
State (Section 32)	New Mexico State Land Office P.O. Box 1148, Santa Fe, NM 87504	4/19/2024

Karlene Schuman
Modrall Sperlberg Rochl Harris & Sisk P.A.
500 Fourth Street, Suite 1000
Albuquerque NM 87102

PS Form 3877

Type of Mailing: CERTIFIED MAIL
04/19/2024

Firm Mailing Book ID: 264746

Line	USPS Article Number	Name, Street, City, State, Zip	Postage	Service Fee	RR Fee	Rest.Del.Fee	Reference Contents
1	9314 8699 0430 0120 1590 40	OXY USA Inc. P.O. Box 4294 Houston TX 77210	\$1.87	\$4.40	\$2.32	\$0.00	11522.003Cascade Notice
2	9314 8699 0430 0120 1590 57	EOG Resources Inc. 5509 Champions Drive Midland TX 79706	\$1.87	\$4.40	\$2.32	\$0.00	11522.003Cascade Notice
3	9314 8699 0430 0120 1590 64	BTA Oil Producers, LC 104 S. Pecos St. Midland TX 79701	\$1.87	\$4.40	\$2.32	\$0.00	11522.003Cascade Notice
4	9314 8699 0430 0120 1590 71	Grasslands Energy LP Attn: Traci Tucker 5128 Apache Plume Rd., Suite 300 Fort Worth TX 76109	\$1.87	\$4.40	\$2.32	\$0.00	11522.003Cascade Notice
5	9314 8699 0430 0120 1590 88	Richard Scott Briggs 1920 E. Riverside Dr., Suite A-120 #505 Austin TX 78741	\$1.87	\$4.40	\$2.32	\$0.00	11522.003Cascade Notice
6	9314 8699 0430 0120 1590 95	Finley Production Co., LP c/o Finley Resources Inc. Agent PO Box 2200 Fort Worth TX 76113	\$1.87	\$4.40	\$2.32	\$0.00	11522.003Cascade Notice
7	9314 8699 0430 0120 1591 01	COG Operating LLC 600 W. Illinois Ave. Midland TX 79701	\$1.87	\$4.40	\$2.32	\$0.00	11522.003Cascade Notice
8	9314 8699 0430 0120 1591 18	Concho Oil and Gas LLC 600 W. Illinois Ave. Midland TX 79701	\$1.87	\$4.40	\$2.32	\$0.00	11522.003Cascade Notice
9	9314 8699 0430 0120 1591 25	CXA Oil & Gas Holdings, L 1302 West Ave Austin TX 78701	\$1.87	\$4.40	\$2.32	\$0.00	11522.003Cascade Notice
10	9314 8699 0430 0120 1591 32	Devon Energy Production Company LP 333 West Sheridan Ave. Oklahoma City OK 73102	\$1.87	\$4.40	\$2.32	\$0.00	11522.003Cascade Notice
11	9314 8699 0430 0120 1591 49	Magnum Hunter Production, Inc. 6001 Deauville Blvd., Suite 300N Midland TX 79706	\$1.87	\$4.40	\$2.32	\$0.00	11522.003Cascade Notice
12	9314 8699 0430 0120 1591 56	Bureau of Land Management 301 Dinosaur Trail Santa Fe NM 87508	\$1.87	\$4.40	\$2.32	\$0.00	11522.003Cascade Notice
13	9314 8699 0430 0120 1591 63	New Mexico State Land Office PO Box 1148 Santa Fe NM 87504	\$1.87	\$4.40	\$2.32	\$0.00	11522.003Cascade Notice
Totals:			\$24.31	\$57.20	\$30.16	\$0.00	
Grand Total:						\$111.67	

Dated:

List Number of Pieces
Listed by Sender

Total Number of Pieces
Received at Post Office

Postmaster:
Name of receiving employee

District I
1625 N. French Dr., Hobbs, NM 88240
Phone:(575) 393-6161 Fax:(575) 393-0720
District II
811 S. First St., Artesia, NM 88210
Phone:(575) 748-1283 Fax:(575) 748-9720
District III
1000 Rio Brazos Rd., Aztec, NM 87410
Phone:(505) 334-6178 Fax:(505) 334-6170
District IV
1220 S. St Francis Dr., Santa Fe, NM 87505
Phone:(505) 476-3470 Fax:(505) 476-3462

State of New Mexico
Energy, Minerals and Natural Resources
Oil Conservation Division
1220 S. St Francis Dr.
Santa Fe, NM 87505

CONDITIONS

Action 335456

CONDITIONS

Operator: CIMAREX ENERGY CO. 6001 Deauville Blvd Midland, TX 79706	OGRID: 215099
	Action Number: 335456
	Action Type: [UF-NSP] Non-Standard Proration (NSP)

CONDITIONS

Created By	Condition	Condition Date
llowe	None	5/3/2024