

State of New Mexico  
Energy, Minerals and Natural Resources Department

---

**Michelle Lujan-Grisham**  
Governor

**Melanie A. Kenderdine**  
Deputy Secretary – Designate

**Ben Shelton**  
Deputy Secretary (Acting)

**Gerasimos “Gerry” Razatos**  
Division Director (Acting)  
Oil Conservation Division



Jaclyn M. McLean  
[jmclean@hinklelawfirm.com](mailto:jmclean@hinklelawfirm.com)

**ADMINISTRATIVE NON-STANDARD LOCATION**

**Administrative Order NSL - 8858**

**Novo Oil & Gas Northern Delaware, LLC [OGRID 372920]  
Rana Picante 12 Federal Com Well No. 413H  
API No. 30-015-54287**

Reference is made to your application received on January 24<sup>th</sup>, 2025.

**Proposed Location**

	<b>Footages</b>	<b>Unit/Lot</b>	<b>Sec.</b>	<b>Twsp</b>	<b>Range</b>	<b>County</b>
Surface	1716 FNL & 362 FWL	E	12	23S	28E	Eddy
First Take Point	2363 FNL & 426 FWL	E	12	23S	28E	Eddy
Last Take Point	559 FNL & 119 FWL	D	12	23S	28E	Eddy
Terminus	563 FNL & 63 FWL	D	12	23S	28E	Eddy

**Proposed Horizontal Gas Units**

<b>Description</b>	<b>Acres</b>	<b>Pool</b>	<b>Pool Code</b>
N/2 of Section 12	320	Purple Sage; Wolfcamp, Gas	98220

You have requested to complete this horizontal well as a **gas** well described above in the referenced pool or formation. This well is governed by special rules R-14262, for the Purple Sage; Wolfcamp (Gas) Pool and governs wells to be located at least 330 feet from the unit outer boundary of a spacing unit and no closer than 10 feet to any quarter – quarter section line. The completed intervals of horizontal wells are to be located no closer than 330 feet to the exterior boundary of a standard 320 - acre **gas** spacing unit.

Administrative Order NSL - 8858  
Novo Oil & Gas Northern Delaware, LLC  
Page 2 of 2

The request to deviate from an orthodox location has met all requirements of 19.15.16.15 (C)(5)(a) NMAC. It is understood that you are seeking this exception in order to create a non-standard location, comprised of First and Last Take Points referenced above within the described Horizontal Spacing Unit.

The well's completed interval is as close as 268 feet to the southern boundary of the horizontal spacing unit. Encroachment will impact the following tract(s).

Section 12, encroachment to the SW/4

The Division understands you have given notice of this application to all operators or owners who are "affected persons," as defined in Paragraph (8) Subsection A of 19.15.2.7 NMAC, in all adjoining units towards which the proposed location encroaches.

The Division understands you are seeking this unorthodox location to maximize the wellbore's completed lateral, and to reduce stranded resources within the Wolfcamp formation underlying the N/2 of Section 12, thereby preventing waste.

Your application has been filed under 19.15.16.15(C)(6) NMAC, 19.15.15.13 NMAC and 19.15.4.12 (A)(2) NMAC.

Per Subsection B of 19.15.15.13 NMAC, **Division approves this unorthodox location.**

Reference this NSL order number on the As Drilled C-102 submitted with the Authorization to Transport, to place this well into production.

The above approvals are subject to your following all other applicable Division rules.

Jurisdiction of this case is retained for the entry of further orders as Division deems necessary.



**Gerasimos Razatos**  
Division Director (Acting)  
GR/lrl

**Date:** 3/6/2025

NSL - 8858

Revised March 23, 2017

ID NO. 424424

RECEIVED: <b>01/24/25</b>	REVIEWER:	TYPE:	APP NO: <b>pLEL2502729707</b>
---------------------------	-----------	-------	-------------------------------

ABOVE THIS TABLE FOR OCD DIVISION USE ONLY

**NEW MEXICO OIL CONSERVATION DIVISION**  
 - Geological & Engineering Bureau -  
 1220 South St. Francis Drive, Santa Fe, NM 87505

**ADMINISTRATIVE APPLICATION CHECKLIST**

THIS CHECKLIST IS MANDATORY FOR ALL ADMINISTRATIVE APPLICATIONS FOR EXCEPTIONS TO DIVISION RULES AND  
 REGULATIONS WHICH REQUIRE PROCESSING AT THE DIVISION LEVEL IN SANTA FE

**Applicant:** Novo Oil & Gas Northern Delaware, LLC **OGRID Number:** 372920  
**Well Name:** Rana Picante 12 Fed Com 413H **API:** 30-015-54287  
**Pool:** Purple Sage; Wolfcamp **Pool Code:** 98220

**SUBMIT ACCURATE AND COMPLETE INFORMATION REQUIRED TO PROCESS THE TYPE OF APPLICATION  
 INDICATED BELOW**

**1) TYPE OF APPLICATION:** Check those which apply for [A]

A. Location – Spacing Unit – Simultaneous Dedication

☒ NSL      ☐ NSP (PROJECT AREA)      ☐ NSP (PRORATION UNIT)      ☐ SD

B. Check one only for [ I ] or [ II ]

[ I ] Commingling – Storage – Measurement

☐ DHC    ☐ CTB    ☐ PLC    ☐ PC    ☐ OLS    ☐ OLM

[ II ] Injection – Disposal – Pressure Increase – Enhanced Oil Recovery

☐ WFX    ☐ PMX    ☐ SWD    ☐ IPI    ☐ EOR    ☐ PPR
**2) NOTIFICATION REQUIRED TO:** Check those which apply.

- A. ☒ Offset operators or lease holders  
 B. ☐ Royalty, overriding royalty owners, revenue owners  
 C. ☐ Application requires published notice  
 D. ☒ Notification and/or concurrent approval by SLO  
 E. ☐ Notification and/or concurrent approval by BLM  
 F. ☐ Surface owner  
 G. ☒ For all of the above, proof of notification or publication is attached, and/or,  
 H. ☐ No notice required

**FOR OCD ONLY**

- ☐ Notice Complete  
☐ Application Content Complete

**3) CERTIFICATION:** I hereby certify that the information submitted with this application for administrative approval is **accurate** and **complete** to the best of my knowledge. I also understand that **no action** will be taken on this application until the required information and notifications are submitted to the Division.

**Note: Statement must be completed by an individual with managerial and/or supervisory capacity.**

Jaclyn M. McLean

Print or Type Name

1/24/25

Date

505-982-4554

Phone Number

Jaclyn M. McLean

Signature

Digitally signed by Jaclyn M. McLean  
 Date: 2025.01.24 08:31:10 -0700

jmclean@hinklelawfirm.com

e-mail Address



hinklelawfirm.com

## HINKLE SHANOR LLP

ATTORNEYS AT LAW

P.O. BOX 2068

SANTA FE, NEW MEXICO 87504

505-982-4554 (FAX) 505-982-8623

WRITER:  
Jaclyn M. McLean, Partner  
jmclean@hinklelawfirm.com

January 24, 2025

### VIA ONLINE FILING

Gerasimos Razatos, Acting Director  
Oil Conservation Division  
Energy, Minerals and Natural Resources Department  
1220 South Saint Francis Drive  
Santa Fe, New Mexico 87505

**Re: Novo Oil & Gas Northern Delaware, LLC  
Request for Administrative Approval of Unorthodox Well Location**

Rana Picante 12 Fed Com 413H (API No. 30-015-54287)  
N/2 of Section 12, Township 23 South, Range 28 East, Eddy County, New Mexico  
Purple Sage; Wolfcamp Pool (Code 98220)

Dear Mr. Razatos,

In accordance with Division Rules 19.15.16.15(C)(6) and 19.15.15.13 NMAC and applicable rules governing acreage and well location requirements for the Purple Sage; Wolfcamp Pool (Code 98220), Novo Oil & Gas Northern Delaware, LLC ("Novo") (OGRID No. 372920) seeks administrative approval of an unorthodox well location for its Rana Picante 12 Fed Com 413H well, in a 320-acre, more or less, horizontal spacing unit underlying the N/2 of Section 12, Township 23 South, Range 28 East, Eddy County, New Mexico.

The location for the **Rana Picante 12 Fed Com 413H** well, as drilled, is as follows:

- Surface Hole Location: 1716' FNL and 362' FWL (Unit E) of Section 12
- First Take Point: 2363' FNL and 426' FWL (Unit E) of Section 12
- Last Take Point: 559' FNL and 119' FWL (Unit D) of Section 12
- Bottom Hole Location: 563' FNL and 63' FWL (Unit D) of Section 12

Since this acreage is governed by the Division's special pool rules included in Order No. R-14262, the completed interval of the well will be unorthodox because it is closer than 330' offset to the northern boundary of the existing horizontal spacing unit. As explained in the engineering statements included as **Exhibit A**, approval of the unorthodox, completed interval is necessary to allow Novo to use a non-standard location for the Rana Picante 12 Fed Com 413H well in order to reduce stranded resources, accelerate recovery time, and overall improve productivity of the well and spacing unit. The approval of an unorthodox well location will prevent waste and protect

---

PO BOX 10  
ROSWELL, NEW MEXICO 88202  
(575) 622-6510  
FAX (575) 623-9332

---

7601 JEFFERSON ST NE · SUITE 180  
ALBUQUERQUE, NEW MEXICO 87109  
505-858-8320  
(FAX) 505-858-8321

---

PO BOX 2068  
SANTA FE, NEW MEXICO 87504  
(505) 982-4554  
FAX (505) 982-8623

January 24, 2024

Page 2

correlative rights.

**Exhibit B** is a Form C-102 for the as drilled Rana Picante 12 Fed Com 413H well. Novo previously obtained approval for an NSL. However, now that the Rana Picante 12 Fed Com 413H well has been drilled, it encroaches on the tracts to the south in the S/2 of Section 12, Township 23 South, Range 28 East.

**Exhibit C** is a plat for Sections 11, 12, and 7 of Township 23 South, Range 28 East, that shows the Rana Picante 12 Fed Com 413H well in relation to the adjoining tracts/proposed spacing units. The designated operator of the Valkyrie 12 WXY Fed Com spacing unit is Marathon Oil Permian LLC.

**Exhibit D** is a spreadsheet that identifies affected persons who were sent a copy of this application and attachments by certified mail advising that any objections must be filed in writing with the Division within 20 days from the date the Division receives the application.

Thank you for your attention to this matter. Please let me know if you require additional information.

Very truly yours,

*/s/ Jaclyn M. McLean*

Jaclyn M. McLean

HINKLE SHANOR LLP



300 N. MARIENFELD STREET, SUITE 1000  
MIDLAND, TX 79701

OFFICE 432.695.4222  
FAX 432.695.4063

1/23/2025

**Re: Rana Picante 12 Federal Com 413H**

**Surface Hole Location:** 1716' FNL and 362' FWL (Unit E) of Section 12, T23S-R28E

**First Take Point:** 2363' FNL and 426' FWL (Unit E) of Section 12, T23S-R28E

**Last Take Point:** 559' FNL and 119' FWL (Unit D) of Section 12, T23S-R28E

**Bottom Hole Location:** 563' FNL and 63' FWL (Unit D) of Section 12, T23S-R28E  
Eddy County, New Mexico

To Whom It May Concern,

Novo Oil and Gas Northern Delaware, LLC, as a wholly owned subsidiary of Permian Resources Operating, LLC ("Permian") respectfully requests administrative approval of a non-standard location for the Rana Picante Federal Com 413H to allow the completed interval to be less than 330 feet from the southern boundary of the existing 320-acre horizontal spacing unit. Approval of a non-standard location will maximize the wellbore's completed lateral, reducing stranded resources and preventing waste. The request for a non-standard location is therefore in the best interests of the mineral owners and the operator.

Sincerely,

A handwritten signature in black ink that reads "DAVID SONKA". The signature is stylized with a large, looped "D" and "S".

**David Carlos Sonka**  
NM Reservoir Engineering Manager  
Permian Resources Operating, LLC

**EXHIBIT A**

## EXHIBIT B

<b>C-102</b>  Submit Electronically Via OCD Permitting	State of New Mexico Energy, Minerals & Natural Resources Department <b>OIL CONSERVATION DIVISION</b>	Revised July 9, 2024	
		Submittal Type:	<input type="checkbox"/> Initial Submittal
			<input type="checkbox"/> Amended Report
		<input checked="" type="checkbox"/> As Drilled	

## WELL LOCATION INFORMATION

API Number <b>30-015-54287</b>	Pool Code <b>98220</b>	Pool Name <b>PURPLE SAGE; WOLFCAMP</b>
Property Code <b>334756</b>	Property Name <b>RANA PICANTE 12 FED COM</b>	Well Number <b>413H</b>
OGRID No. <b>372920</b>	Operator Name <b>NOVO OIL &amp; GAS NORTHERN DELAWARE, LLC</b>	Ground Level Elevation <b>3,005.90'</b>
Surface Owner: <input type="checkbox"/> State <input type="checkbox"/> Fee <input type="checkbox"/> Tribal <input checked="" type="checkbox"/> Federal		Mineral Owner: <input type="checkbox"/> State <input type="checkbox"/> Fee <input type="checkbox"/> Tribal <input checked="" type="checkbox"/> Federal

## Surface Location

UL <b>E</b>	Section <b>12</b>	Township <b>23S</b>	Range <b>28E</b>	Lot	Ft. from N/S <b>1,716' FNL</b>	Ft. from E/W <b>362' FWL</b>	Latitude <b>32.322607°</b>	Longitude <b>-104.048222°</b>	County <b>EDDY</b>
----------------	----------------------	------------------------	---------------------	-----	-----------------------------------	---------------------------------	-------------------------------	----------------------------------	-----------------------

## Bottom Hole Location

UL <b>D</b>	Section <b>12</b>	Township <b>23S</b>	Range <b>28E</b>	Lot	Ft. from N/S <b>563' FNL</b>	Ft. from E/W <b>63' FWL</b>	Latitude <b>32.325768°</b>	Longitude <b>-104.049151°</b>	County <b>EDDY</b>
----------------	----------------------	------------------------	---------------------	-----	---------------------------------	--------------------------------	-------------------------------	----------------------------------	-----------------------

Dedicated Acres <b>320</b>	Infill or Defining Well <b>INFILL</b>	Defining Well API <b>30-015-54287</b>	Overlapping Spacing Unit (Y/N) <b>Y</b>	Consolidation Code
Order Numbers.			Well setbacks are under Common Ownership: <input checked="" type="checkbox"/> Yes <input type="checkbox"/> No	

## Kick Off Point (KOP)

UL <b>E</b>	Section <b>12</b>	Township <b>23S</b>	Range <b>28E</b>	Lot	Ft. from N/S <b>2,379' FNL</b>	Ft. from E/W <b>58' FWL</b>	Latitude <b>32.320774°</b>	Longitude <b>-104.049228°</b>	County <b>EDDY</b>
----------------	----------------------	------------------------	---------------------	-----	-----------------------------------	--------------------------------	-------------------------------	----------------------------------	-----------------------


## First Take Point (FTP)

UL <b>E</b>	Section <b>12</b>	Township <b>23S</b>	Range <b>28E</b>	Lot	Ft. from N/S <b>2,363' FNL</b>	Ft. from E/W <b>426' FWL</b>	Latitude <b>32.320831°</b>	Longitude <b>-104.048036°</b>	County <b>EDDY</b>
----------------	----------------------	------------------------	---------------------	-----	-----------------------------------	---------------------------------	-------------------------------	----------------------------------	-----------------------

## Last Take Point (LTP)

UL <b>D</b>	Section <b>12</b>	Township <b>23S</b>	Range <b>28E</b>	Lot	Ft. from N/S <b>559' FNL</b>	Ft. from E/W <b>119' FWL</b>	Latitude <b>32.325781°</b>	Longitude <b>-104.048970°</b>	County <b>EDDY</b>
----------------	----------------------	------------------------	---------------------	-----	---------------------------------	---------------------------------	-------------------------------	----------------------------------	-----------------------

Unitized Area or Area of Uniform Interest	Spacing Unit Type <input type="checkbox"/> Horizontal <input type="checkbox"/> Vertical	Ground Floor Elevation:
---	---	-------------------------

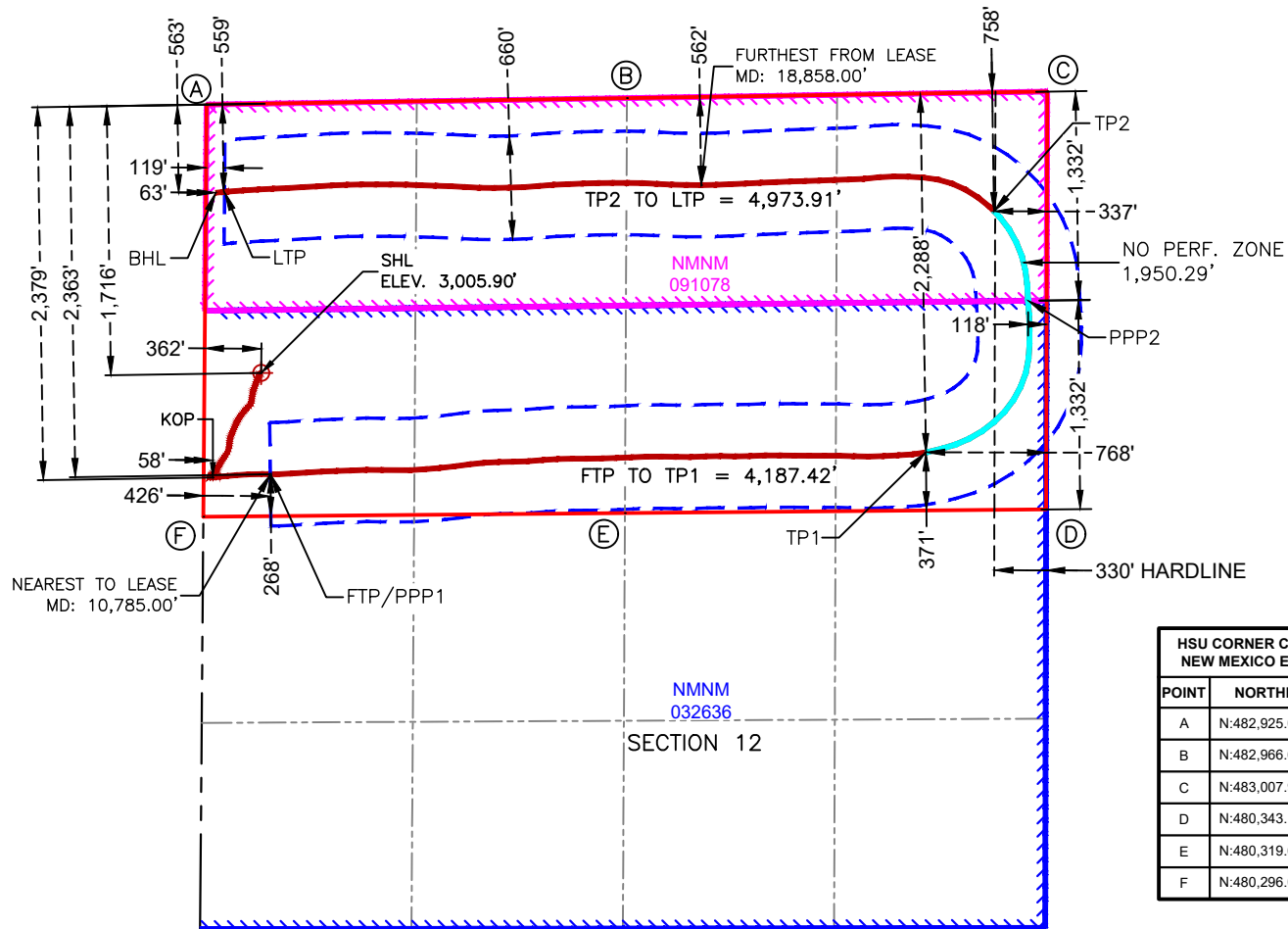
<b>OPERATOR CERTIFICATIONS</b>  I hereby certify that the information contained herein is true and complete to the best of my knowledge and belief, and, if the well is a vertical or directional well, that this organization either owns a working interest or unleased mineral interest in the land including the proposed bottom hole location or has a right to drill this well at this location pursuant to a contract with an owner of a working interest or unleased mineral interest, or to a voluntary pooling agreement or a compulsory pooling order heretofore entered by the division.  If this well is a horizontal well, I further certify that this organization has received the consent of at least one lessee or owner of a working interest or unleased mineral interest in each tract (in the target pool or formation) in which any part of the well's completed interval will be located or obtained a compulsory pooling order from the division.		<b>SURVEYOR CERTIFICATIONS</b>  I hereby certify that the well location shown on this plat was plotted from field notes of actual surveys made by me or under my supervision and that the same is true and correct to the best of my belief.   Date: 1/16/2025	
Signature _____ Date _____		Signature and Seal of Professional Surveyor	
Printed Name _____		Certificate Number <b>12177</b>	Date of Survey <b>1/16/2025</b>
Email Address _____			

Note: No allowable will be assigned to this completion until all interests have been consolidated or a non-standard unit has been approved by the division.

## ACREAGE DEDICATION PLATS

This grid represents a standard section. You may superimpose a non-standard section, or larger area, over this grid. Operators must outline the dedicated acreage in a red box, clearly show the well surface location and bottom hole location, if it is directionally drilled, with the dimensions from the section lines in the cardinal directions. If this is a horizontal wellbore show on this plat the location of the First Take Point and Last Take Point, and the point within the Completed interval (other than the First Take Point or Last Take Point) that is closest to any outer boundary of the tract.

Surveyors shall use the latest United States government survey or dependent resurvey. Well locations will be in reference to the New Mexico Principal Meridian. If the land is not surveyed, contact the OCD Engineering Bureau. Independent subdivision surveys will not be acceptable.



**SURFACE HOLE LOCATION**  
1,716' FNL & 362' FWL  
ELEV. = 3,005.90'

NAD 83 X = 629,407.94'  
NAD 83 Y = 481,213.76'  
NAD 83 LAT = 32.322607°  
NAD 83 LONG = -104.048222°  
NAD 27 X = 588,225.28'  
NAD 27 Y = 481,154.19'  
NAD 27 LAT = 32.322486°  
NAD 27 LONG = -104.047727°

**KICK-OFF POINT**  
2,379' FNL & 58' FWL  
MD = 10,128.00'

NAD 83 X = 629,098.99'  
NAD 83 Y = 480,546.25'  
NAD 83 LAT = 32.320774°  
NAD 83 LONG = -104.049228°  
NAD 27 X = 587,916.31'  
NAD 27 Y = 480,486.70'  
NAD 27 LAT = 32.320653°  
NAD 27 LONG = -104.048733°

**FIRST TAKE POINT**  
2,363' FNL & 426' FWL  
MD = 10,785.00'

NAD 83 X = 629,467.14'  
NAD 83 Y = 480,567.87'  
NAD 83 LAT = 32.320831°  
NAD 83 LONG = -104.048036°  
NAD 27 X = 588,284.46'  
NAD 27 Y = 480,508.31'  
NAD 27 LAT = 32.320710°  
NAD 27 LONG = -104.047541°

**TAKE POINT 1**  
2,288' FNL & 768' FEL  
MD = 14,975.00'

NAD 83 X = 633,648.60'  
NAD 83 Y = 480,707.60'  
NAD 83 LAT = 32.321184°  
NAD 83 LONG = -104.034498°  
NAD 27 X = 592,465.86'  
NAD 27 Y = 480,647.98'  
NAD 27 LAT = 32.321062°  
NAD 27 LONG = -104.034004°

**PENETRATION POINT 2**  
1,332' FNL & 118' FEL  
MD = 16,298.28'

NAD 83 X = 634,300.59'  
NAD 83 Y = 481,674.10'  
NAD 83 LAT = 32.323835°  
NAD 83 LONG = -104.032379°  
NAD 27 X = 593,117.87'  
NAD 27 Y = 481,614.46'  
NAD 27 LAT = 32.323714°  
NAD 27 LONG = -104.031885°

**TAKE POINT 2**  
758' FNL & 337' FEL  
MD = 16,927.00'

NAD 83 X = 634,083.16'  
NAD 83 Y = 482,244.71'  
NAD 83 LAT = 32.325406°  
NAD 83 LONG = -104.033078°  
NAD 27 X = 592,900.46'  
NAD 27 Y = 482,185.06'  
NAD 27 LAT = 32.325284°  
NAD 27 LONG = -104.032583°

**LAST TAKE POINT**  
559' FNL & 119' FWL  
MD = 21,904.00'

NAD 83 X = 629,173.77'  
NAD 83 Y = 482,367.94'  
NAD 83 LAT = 32.325781°  
NAD 83 LONG = -104.048970°  
NAD 27 X = 587,991.14'  
NAD 27 Y = 482,308.34'  
NAD 27 LAT = 32.325660°  
NAD 27 LONG = -104.048475°

**BOTTOM HOLE LOCATION**  
563' FNL & 63' FWL  
MD = 21,960.00'

NAD 83 X = 629,118.00'  
NAD 83 Y = 482,362.91'  
NAD 83 LAT = 32.325768°  
NAD 83 LONG = -104.049151°  
NAD 27 X = 587,935.37'  
NAD 27 Y = 482,303.31'  
NAD 27 LAT = 32.325647°  
NAD 27 LONG = -104.048656°



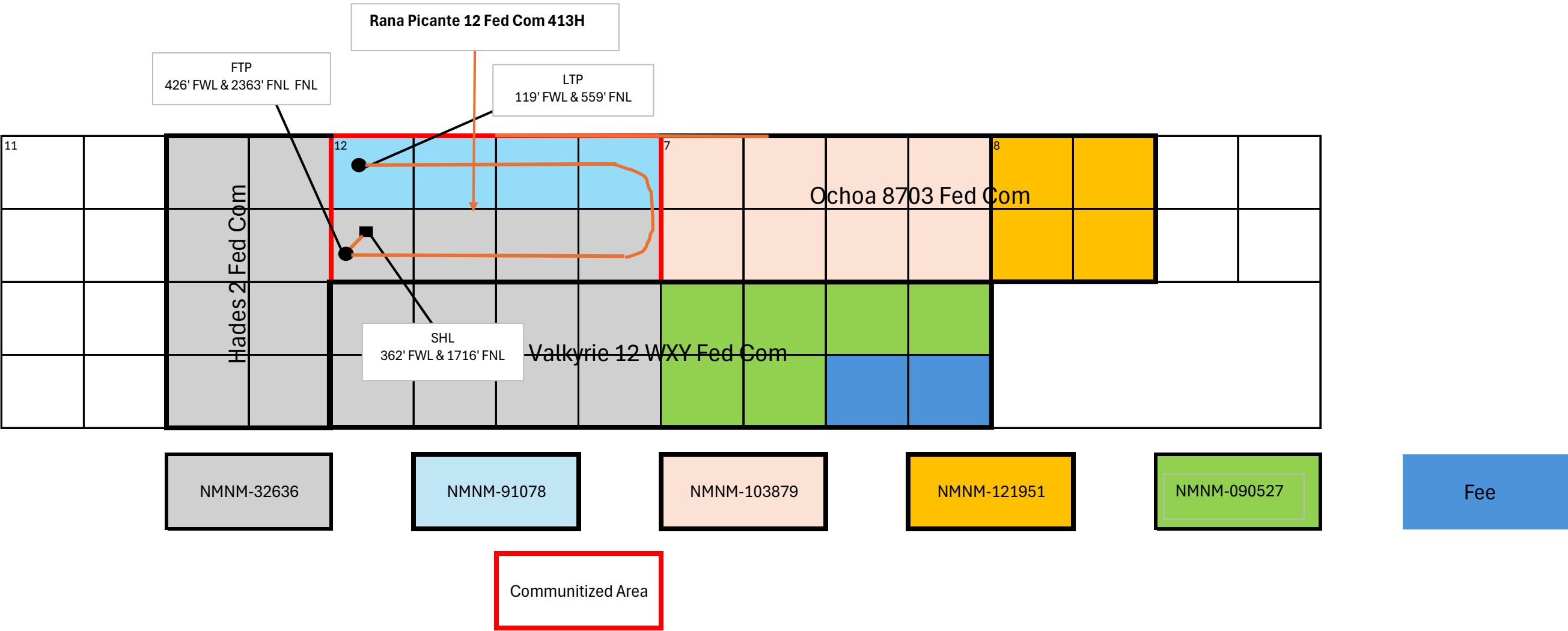


EXHIBIT C

**Rana Picante 12 Fed Com 413H NSL Notification**

N/2 of Section 12, T23S-R28E, Eddy County, New Mexico (containing 320.00 acres, more or less)

**Notification:**

Offset Proration Unit – Valkyrie 12 WXY Fed Com Spacing Unit			
<i>Owner Type</i>	<i>Affected Party</i>	<i>Mailing Address</i>	<i>Date Notice Sent &amp; Tracking No.</i>
WI Owner/Operator	Marathon Oil Permian LLC	990 Town & Country Blvd, Houston, Texas 77024	1/24/25 - 9589071052701502392287
Mineral Interest	Bureau of Land Management	301 Dinosaur Trail, Santa Fe, NM 87508	1/24/25 - 9589071052701502392270

**EXHIBIT D**

Sante Fe Main Office  
Phone: (505) 476-3441

General Information  
Phone: (505) 629-6116

Online Phone Directory  
<https://www.emnrd.nm.gov/ocd/contact-us>

State of New Mexico  
Energy, Minerals and Natural Resources  
Oil Conservation Division  
1220 S. St Francis Dr.  
Santa Fe, NM 87505

CONDITIONS

Action 424424

CONDITIONS

Operator: Permian Resources Operating, LLC 300 N. Marienfeld St Ste 1000 Midland, TX 79701	OGRID: 372165
	Action Number: 424424
	Action Type: [UF-NSL] Non-Standard Location (NSL)

CONDITIONS

Created By	Condition	Condition Date
llowe	None	1/27/2025