

MEWBOURNE OIL COMPANY  
4801 Business Park Blvd  
Hobbs, NM 88240  
575-393-5905  
September 19, 2022

Engineering Bureau  
New Mexico Oil Conservation Division  
1220 S. St. Francis Drive  
Santa Fe, NM 87505

Bureau of Land Management  
620 E. Greene Street  
Carlsbad, NM 88220-6292

Commissioner of Public Lands  
Attn: Commingling Manager  
PO Box 1148  
Santa Fe, NM 87504-1148


RE: Application for State Lease Commingle & Off Lease Measurement

To: Whom It May Concern

Mewbourne Oil Company ("Mewbourne") is requesting permission to surface commingle production from eleven wells located on State lease LG24170000 which comprise portions of section 19 & 18, T19S, R35E, Lea County, New Mexico. All oil production from each well is to be stored in a central tank battery in the SESW of section 19, T19S, R35E. All gas production will be allocated then combined and measured by a common gas meter (Targa MM #118001368) located Off Lease in the SESE of section 24, T19S, R34E. Information detailing each well is attached.

Please find the following enclosed:

- Cover Letter
- Commingling Summary Page
- Form C102 of wells & battery
- Detailed Maps: lease boundaries & facility locations
- Application Checklist
- Form C-107B
- Copy of letter sent certified to all involved parties
- List of all involved parties

Signed:   
Printed Name: Chad Cole  
Title: Regulatory Specialist  
Date: 9/19/2022

**APPLICATION FOR LEASE COMMINGLING, CENTRAL TANK BATTERY (CTB)****Commingling procedure for Santa Vaca leases:**

Mewbourne Oil Company is requesting approval for lease commingling production from 11 wells located on State leases below in a Central Tank Battery "CTB":

<b>Well Name</b>	<b>Location</b>	<b>API #</b>	<b>Pool #</b>	<b>MCFPD</b>	<b>Dry BTU @ 14.73 PSI</b>
<b>SANTA VACA 19/18 B1MD State Com 1H</b>	205' FSL & 1640' FWL, Sec 19, T19S, R35E	30-025-50368	[55610] SCHARB; BONE SPRING	~3000	~1250
<b>SANTA VACA 19/18 B1NC State Com 1H</b>	205' FSL & 1660' FWL, Sec 19, T19S, R35E	30-025-50487	[55610] SCHARB; BONE SPRING	~3000	~1250
<b>SANTA VACA 19/18 B1OB FEE 1H</b>	205' FSL & 1320' FEL, Sec 19, T19S, R35E	30-025-50324	[49553] PALMILLO; BONE SPRING, EAST	~3000	~1250
<b>SANTA VACA 19/18 B2MD State Com 1H</b>	205' FSL & 1380' FWL, Sec 19, T19S, R35E	30-025-46804	[55610] SCHARB; BONE SPRING	~3000	~1250
<b>SANTA VACA 19/18 B2NC State Com 1H</b>	205' FSL & 1980' FWL, Sec 19, T19S, R35E	30-025-49154	[55610] SCHARB; BONE SPRING	~3000	~1250
<b>SANTA VACA 19/18 B2OB FEE 1H</b>	205' FSL & 1340' FEL, Sec 19, T19S, R35E	30-025-50325	[55610] SCHARB; BONE SPRING	~3000	~1250
<b>SANTA VACA 19/18 B2PA FEE 1H</b>	205' FSL & 1270' FEL, Sec 19, T19S, R35E	30-025-50241	[55610] SCHARB; BONE SPRING	~3000	~1250
<b>SANTA VACA 19/18 B3MD State Com 1H</b>	205' FSL & 1350' FWL, Sec 19, T19S, R35E	30-025-46803	[55610] SCHARB; BONE SPRING	~3000	~1250
<b>SANTA VACA 19/18 B3NC State Com 1H</b>	205' FSL & 1410' FWL, Sec 19, T19S, R35E	30-025-49155	[55610] SCHARB; BONE SPRING	~3000	~1250
<b>SANTA VACA 19/18 B3OB FEE 1H</b>	205' FSL & 1360' FEL, Sec 19, T19S, R35E	30-025-50242	[55610] SCHARB; BONE SPRING	~3000	~1250
<b>SANTA VACA 19/18 B3PA FEE 1H</b>	205' FSL & 1300' FEL, Sec 19, T19S, R35E	30-025-50326	[49553] PALMILLO; BONE SPRING, EAST	~3000	~1250

**Oil, Water, & Gas metering**

The central tank battery in the SESW of Section 19, T19S, R35E, Lea County, New Mexico. The production for all eleven wells will come to its own separator. From the separator production will be allocated as follows:

**Oil Metering:**

Oil volumes from each well producing to the battery will be determined by using an allocation meter at the facility for each well. Oil from each separator will be metered and then sent to a heater treater (HT). Oil from the HT will then flow to a vapor recovery tower (VRT) and then to the 750 BBL oil tanks (OT). Oil production will be allocated on a daily basis based on the oil allocation meter downstream of the separator. This meter will be proven based on API, NMOCD and BLM specifications by tank testing. This process is performed by isolating a well to specific oil tanks and calibrating the meter based on the production numbers. The oil production from these wells listed above will be measured, commingled and then sold via truck haul or LACT.

**Water Metering:**

Water volumes from each well producing to the battery will be determined by using an allocation meter at the facility for each well. Water from each separator will be metered and sent to the 1000 BBL gun barrel (GB). From the GB the water will be sent to the 750 BBL water tanks (WT). Water production will be allocated on a daily basis based on the water allocation meter downstream of the separator. The water production from these wells listed above will be measured, commingled and disposed of via truck haul or pipelined to disposal.

**Gas Metering:**

Gas volumes from each well producing to this battery will be determined by using an allocation gas meter after the separator at the facility for each well. The gas production from each well listed above will be measured, commingled, and then sold off lease using the 24 hr. well test method. A Targa common gas sales meter #118001368 will be located off lease in the SESE of section 24, T19S, R34E. This meter is calibrated on a regular basis per API, NMOCD and BLM specifications.

**Economic Justification**

Well Name	BOPD EST	Oil Gravity @ 60°	Value/bbl	MCFPD	Dry BTU @ 14.73 PSI	Value/MCF
SANTA VACA 19/18 B1MD State Com 1H	1500	48	\$82	~3000	~1250	\$8.30
SANTA VACA 19/18 B1NC State Com 1H	1500	48	\$82	~3000	~1250	\$8.30
SANTA VACA 19/18 B1OB FEE 1H	1500	48	\$82	~3000	~1250	\$8.30
SANTA VACA 19/18 B2MD State Com 1H	1500	48	\$82	~3000	~1250	\$8.30
SANTA VACA 19/18 B2NC State Com 1H	1500	48	\$82	~3000	~1250	\$8.30

SANTA VACA 19/18 B2OB FEE 1H	1500	48	\$82	~3000	~1250	\$8.30
SANTA VACA 19/18 B2PA FEE 1H	1500	48	\$82	~3000	~1250	\$8.30
SANTA VACA 19/18 B3MD State Com 1H	1500	48	\$82	~3000	~1250	\$8.30
SANTA VACA 19/18 B3NC State Com 1H	1500	48	\$82	~3000	~1250	\$8.30
SANTA VACA 19/18 B3OB FEE 1H	1500	48	\$82	~3000	~1250	\$8.30
SANTA VACA 19/18 B3PA FEE 1H	1500	48	\$82	~3000	~1250	\$8.30
	16,500	48	\$82	~33,000	1250	\$8.30

**Process and Flow Descriptions:**

The flow of production is shown in detail on the enclosed facility diagram and map which shows lease boundaries, wells, battery, & MM location. The commingling of production is in the interest of conservation and waste and will result in the most effective economic means of producing the reserves in place from the affected wells and will not result in reduced royalty or improper measurement of production.

Working, royalty, & overriding interest owners have been notified of the proposal via certified mail (see attached

Signed: 

Printed Name: Chad Cole

Title: Regulatory Specialist

Date: 9/19/2022

District I  
1625 N. French Dr., Hobbs, NM 88240  
Phone: (505) 393-6161 Fax: (505) 393-0720  
District II  
811 S. First St., Artesia, NM 88210  
Phone: (505) 748-1283 Fax: (505) 748-9720  
District III  
1000 Rio Brazos Road, Aztec, NM 87410  
Phone: (505) 334-6178 Fax: (505) 334-6170  
District IV  
1220 S. St. Francis Dr., Santa Fe, NM 87505  
Phone: (505) 476-3460 Fax: (505) 476-3462

State of New Mexico  
Energy, Minerals & Natural Resources Department  
**OIL CONSERVATION DIVISION**  
1220 South St. Francis Dr.  
Santa Fe, NM 87505

Form C-102  
Revised August 1, 2011  
Submit one copy to appropriate  
District Office

☐ AMENDED REPORT

**WELL LOCATION AND ACREAGE DEDICATION PLAT**

1 API Number	2 Pool Code	3 Pool Name
4 Property Code	5 Property Name <b>SANTA VACA 19/18 BMD STATE COM</b>	6 Well Number <b>1H</b>
7 OGRID NO.	8 Operator Name <b>MEWBOURNE OIL COMPANY</b>	9 Elevation <b>3789'</b>

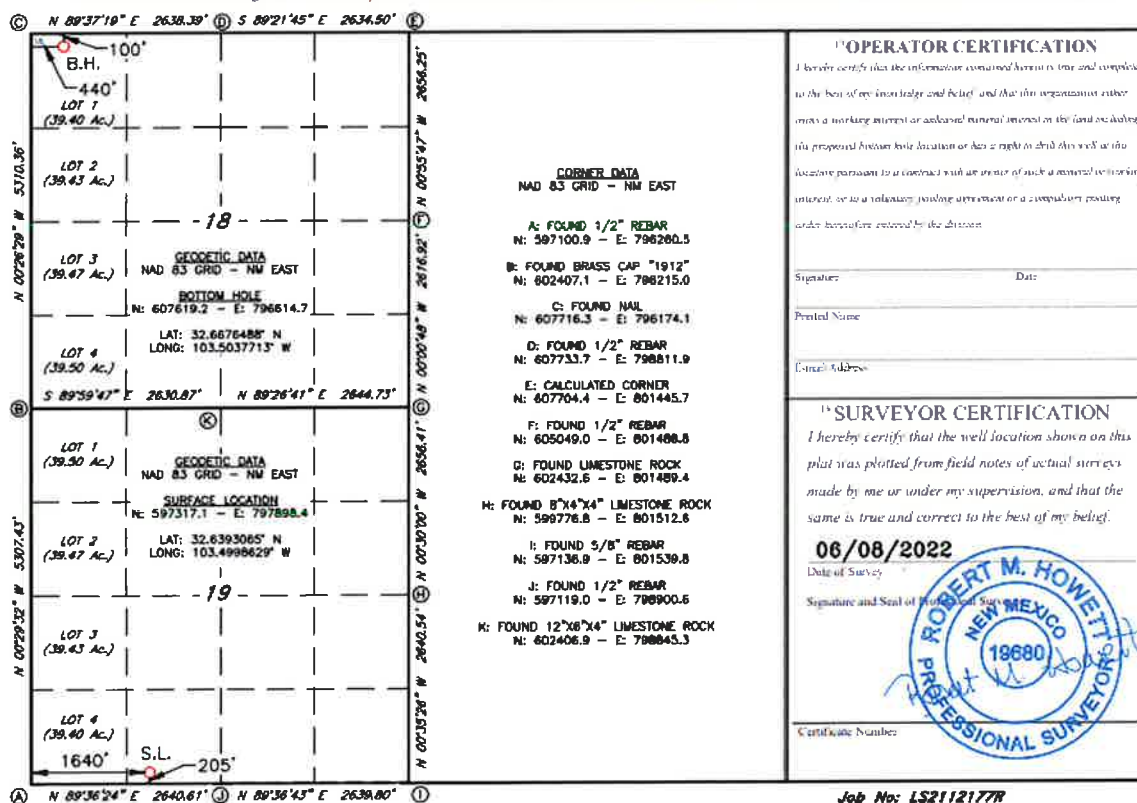
**\*\* Surface Location**

UL or lot no.	Section	Township	Range	Lot 1dn	Feet from the	North/South line	Feet from the	East/West line	County
<b>N</b>	<b>19</b>	<b>19S</b>	<b>35E</b>		<b>205</b>	<b>SOUTH</b>	<b>1640</b>	<b>WEST</b>	<b>LEA</b>

**\*\* Bottom Hole Location If Different From Surface**

UL or lot no.	Section	Township	Range	Lot 1dn	Feet from the	North/South line	Feet from the	East/West line	County
<b>1</b>	<b>18</b>	<b>19S</b>	<b>35E</b>		<b>100</b>	<b>NORTH</b>	<b>440</b>	<b>WEST</b>	<b>LEA</b>
12 Dedicated Acres	13 Joint or Infill	14 Consolidation Code	15 Order No.						

No allowable will be assigned to this completion until all interest have been consolidated or a non-standard unit has been approved by the division.



☐ AMENDED REPORT

## Job No: 15211217XR



District I  
1625 N. French Dr., Hobbs, NM 88240  
Phone: (575) 393-6161 Fax: (575) 393-0720  
District II  
811 S. First St., Artesia, NM 88210  
Phone: (575) 748-1283 Fax: (575) 748-9720  
District III  
1000 Rio Brazos Road, Aztec, NM 87410  
Phone: (505) 334-6178 Fax: (505) 334-6170  
District IV  
1220 S. St. Francis Dr., Santa Fe, NM 87505  
Phone: (505) 476-3460 Fax: (505) 476-3462

State of New Mexico  
Energy, Minerals & Natural Resources Department  
**OIL CONSERVATION DIVISION**  
1220 South St. Francis Dr.  
Santa Fe, NM 87505

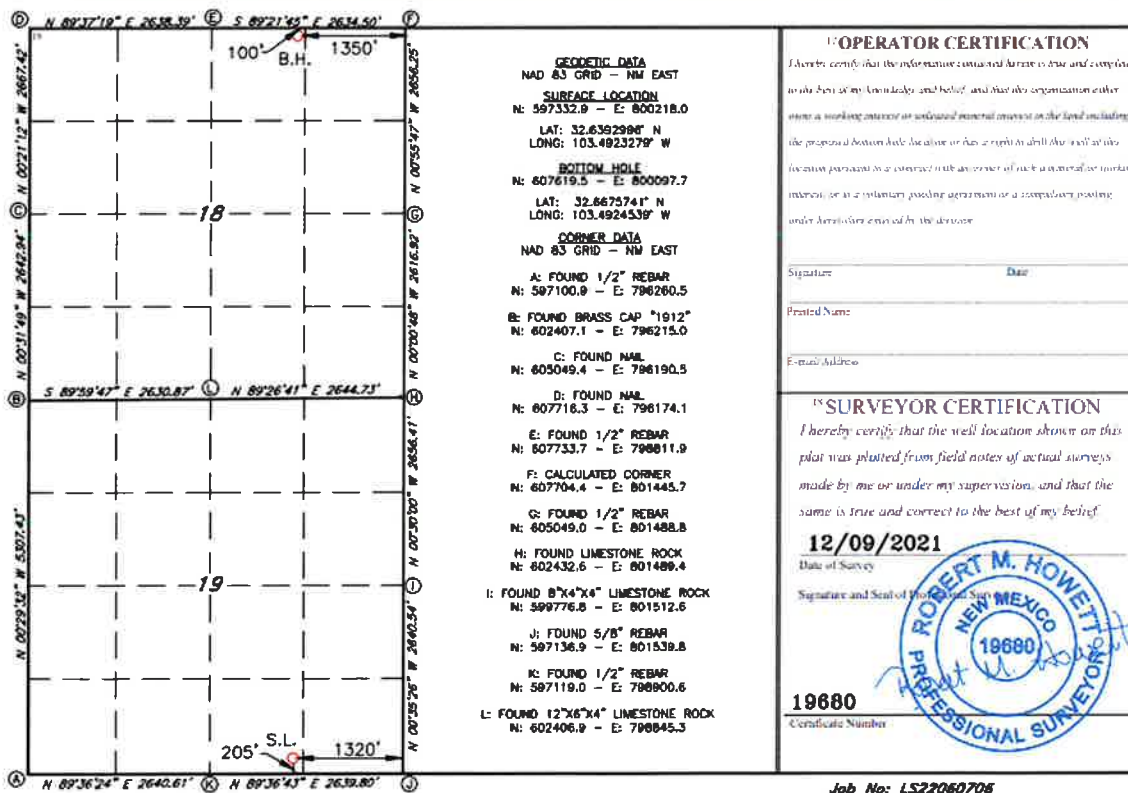
Form C-102  
Revised August 1, 2011  
Submit one copy to appropriate  
District Office

☐ AMENDED REPORT

**WELL LOCATION AND ACREAGE DEDICATION PLAT**

1 API Number		2 Pool Code		3 Pool Name	
4 Property Code		5 Property Name <b>SANTA VACA 19/18 B10B FEE</b>			6 Well Number <b>1H</b>
7 OGRID NO.		8 Operator Name <b>MEWBORNE OIL COMPANY</b>			9 Elevation <b>3793'</b>
10 Surface Location					
UL or lot no. <b>0</b>	Section <b>19</b>	Township <b>19S</b>	Range <b>35E</b>	Lot Idn	Feet from the <b>205</b>
				North/South line <b>SOUTH</b>	Feet from the <b>1320</b>
				East/West line <b>EAST</b>	County <b>LEA</b>
11 Bottom Hole Location If Different From Surface					
UL or lot no. <b>B</b>	Section <b>18</b>	Township <b>19S</b>	Range <b>35E</b>	Lot Idn	Feet from the <b>100</b>
				North/South line <b>NORTH</b>	Feet from the <b>1350</b>
				East/West line <b>EAST</b>	County <b>LEA</b>
12 Dedicated Acres		13 Joint or Infill		14 Consolidation Code	
				15 Order No.	

No allowable will be assigned to this completion until all interest have been consolidated or a non-standard unit has been approved by the division.



District I  
1625 N. French Dr., Hobbs, NM 88240  
Phone: (575) 393-6161 Fax: (575) 393-9720  
District II  
811 S. First St., Artesia, NM 88210  
Phone: (575) 748-3283 Fax: (575) 748-9720  
District III  
1000 Rio Grande Road, Aztec, NM 87410  
Phone: (505) 334-6178 Fax: (505) 334-6170  
District IV  
1220 S. St. Francis Dr., Santa Fe, NM 87505  
Phone: (505) 476-3460 Fax: (505) 476-3462

State of New Mexico  
Energy, Minerals & Natural Resources Department  
OIL CONSERVATION DIVISION  
1220 South St. Francis Dr.  
Santa Fe, NM 87505

Form C-102  
Revised August 1, 2011  
Submit one copy to appropriate  
District Office

☐ AMENDED REPORT

WELL LOCATION AND ACREAGE DEDICATION PLAT

1 API Number		2 Pool Code		3 Pool Name	
4 Property Code		5 Property Name <b>SANTA VACA 19/18 B2MD STATE COM</b>			6 Well Number <b>1H</b>
7 GRID NO.		8 Operator Name <b>MEWBOURNE OIL COMPANY</b>			9 Elevation <b>3788'</b>

10 Surface Location

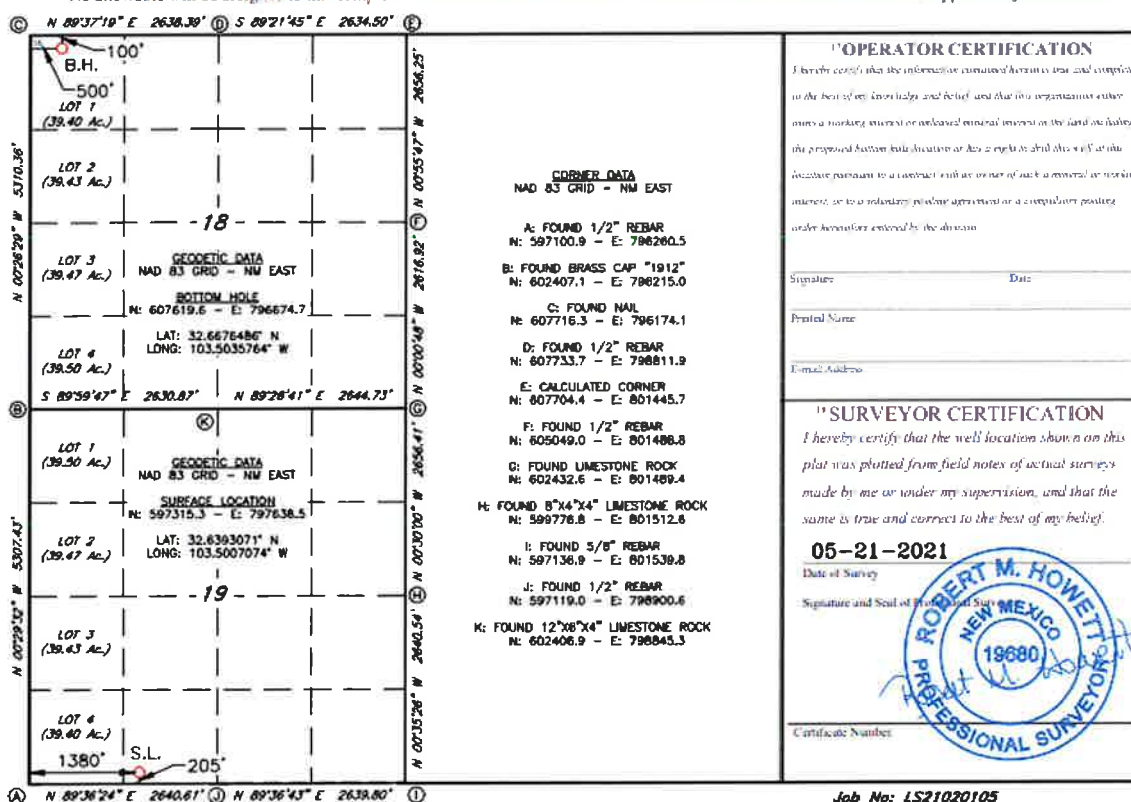
U/L or lot no.	Section	Township	Range	Lot 1dn	Feet from the	North South line	Feet from the	East West line	County
<b>N</b>	<b>19</b>	<b>19S</b>	<b>35E</b>		<b>205</b>	<b>SOUTH</b>	<b>1380</b>	<b>WEST</b>	<b>LEA</b>

11 Bottom Hole Location If Different From Surface

U/L or lot no.	Section	Township	Range	Lot 1dn	Feet from the	North South line	Feet from the	East West line	County
<b>1</b>	<b>18</b>	<b>19S</b>	<b>35E</b>		<b>100</b>	<b>NORTH</b>	<b>500</b>	<b>WEST</b>	<b>LEA</b>

12 Dedicated Acres	13 Joint or Infill	14 Consolidation Code	15 Order No.

No allowable will be assigned to this completion until all interest have been consolidated or a non-standard unit has been approved by the division.





District I  
1623 N. French Dr., Hobbs, NM 88240  
Phone: (575) 393-6161 Fax: (575) 393-0720  
District II  
311 S. First St., Artesia, NM 88210  
Phone: (575) 748-1285 Fax: (575) 748-9720  
District III  
1000 Rio Brazos Road, Aztec, NM 87410  
Phone: (505) 334-6178 Fax: (505) 334-6170  
District IV  
1220 S. St. Francis Dr., Santa Fe, NM 87505  
Phone: (505) 476-3460 Fax: (505) 476-3462

State of New Mexico  
Energy, Minerals & Natural Resources Department  
OIL CONSERVATION DIVISION  
1220 South St. Francis Dr.  
Santa Fe, NM 87505

Form C-102  
Revised August 1, 2011  
Submit one copy to appropriate  
District Office

☐ AMENDED REPORT

WELL LOCATION AND ACREAGE DEDICATION PLAT

1 API Number		2 Pool Code		3 Pool Name	
4 Property Code		5 Property Name <b>SANTA VACA 19/18 B2NC STATE COM</b>			6 Well Number <b>1H</b>
7 OGRID NO.		8 Operator Name <b>MEWBOURNE OIL COMPANY</b>			9 Elevation <b>3788'</b>
10 Surface Location					
UL or Lot no. <b>N</b>	Section <b>19</b>	Township <b>19S</b>	Range <b>35E</b>	Lot Idn	Feet from the <b>205</b>
		North-South line <b>SOUTH</b>		Feet from the <b>1440</b>	East-West line <b>WEST</b>
				County <b>LEA</b>	
11 Bottom Hole Location If Different From Surface					
UL or Lot no. <b>C</b>	Section <b>18</b>	Township <b>19S</b>	Range <b>35E</b>	Lot Idn	Feet from the <b>100</b>
		North-South line <b>NORTH</b>		Feet from the <b>1980</b>	East-West line <b>WEST</b>
				County <b>LEA</b>	
12 Dedicated Acres		13 Joint or Infill	14 Consolidation Code		15 Order No.

No allowable will be assigned to this completion until all interest have been consolidated or a non-standard unit has been approved by the division.

<p>© N 89°37'19" E 2638.38' Ⓢ S 89°21'45" E 2634.50' Ⓢ</p> <p>1980' B.H. 100'</p> <p>LOT 1 (39.40 Ac.)</p> <p>LOT 2 (39.43 Ac.)</p> <p>LOT 3 (39.47 Ac.)</p> <p>LOT 4 (39.50 Ac.)</p> <p>GEODETIC DATA NAD 83 GRID - NM EAST BOTTOM HOLE N: 607629.4 - E: 798154.4 LAT: 32.6676435° N LONG: 103.4987681° W</p> <p>GEODETIC DATA NAD 83 GRID - NM EAST SURFACE LOCATION N: 597315.7 - E: 797698.5 LAT: 32.6393070° N LONG: 103.5005124° W</p> <p>1440' S.L. 205'</p> <p>© N 89°36'24" E 2640.61' Ⓢ N 89°36'45" E 2638.80' Ⓢ</p>		<p>11 OPERATOR CERTIFICATION</p> <p>I hereby certify that the information contained herein is true and complete to the best of my knowledge and belief, and that this organization either owns a working interest or an adjuvanted mineral interest in the land including the proposed bottom hole location or has a right to drill this well at this location pursuant to a contract with an owner of such a mineral or working interest or to a voluntary pooling agreement or a compulsory pooling order heretofore entered by the division.</p> <p>Signature: _____ Date: _____</p> <p>Printed Name: _____</p> <p>Printed Address: _____</p>
<p>12 SURVEYOR CERTIFICATION</p> <p>I hereby certify that the well location shown on this plat was plotted from field notes of actual surveys made by me or under my supervision, and that the same is true and correct to the best of my belief.</p> <p>05-21-2021</p> <p>Date of Survey</p> <p>Signature and Seal of Professional Surveyor</p> <p>Certificate Number</p>		<p>CORNER DATA NAD 83 GRID - NM EAST</p> <p>A: FOUND 1/2" REBAR N: 597100.9 - E: 796280.5</p> <p>B: FOUND BRASS CAP "1912" N: 602407.1 - E: 796215.0</p> <p>C: FOUND NAIL N: 607716.3 - E: 796174.1</p> <p>D: FOUND 1/2" REBAR N: 607733.7 - E: 798811.9</p> <p>E: CALCULATED CORNER N: 607704.4 - E: 801445.7</p> <p>F: FOUND 1/2" REBAR N: 605049.0 - E: 801488.8</p> <p>G: FOUND LIMESTONE ROCK N: 602432.6 - E: 801489.4</p> <p>H: FOUND 8"x4"x4" LIMESTONE ROCK N: 598776.8 - E: 801512.6</p> <p>I: FOUND 5/8" REBAR N: 597136.9 - E: 801539.8</p> <p>J: FOUND 1/2" REBAR N: 597119.0 - E: 798900.6</p> <p>K: FOUND 12"x8"x4" LIMESTONE ROCK N: 602406.9 - E: 798845.3</p>

Job No: LS21020105

District I  
1625 N. French Dr., Hobbs, NM 88240  
Phone: (575) 393-6161 Fax: (575) 393-0720  
District II  
811 S. First St., Artesia, NM 88210  
Phone: (505) 748-1283 Fax: (505) 748-9720  
District III  
1000 Rio Grande Road, Artesia, NM 87410  
Phone: (505) 334-6176 Fax: (505) 334-6170  
District IV  
1220 S. St. Francis Dr., Santa Fe, NM 87505  
Phone: (505) 476-3460 Fax: (505) 476-3462

State of New Mexico  
Energy, Minerals & Natural Resources Department  
**OIL CONSERVATION DIVISION**  
1220 South St. Francis Dr.  
Santa Fe, NM 87505

Form C-102  
Revised August 1, 2011  
Submit one copy to appropriate  
District Office

☐ AMENDED REPORT

**WELL LOCATION AND ACREAGE DEDICATION PLAT**

1 API Number		2 Pool Code		3 Pool Name	
4 Property Code		5 Property Name <b>SANTA VACA 19/18 B20B FEE</b>			6 Well Number <b>1H</b>
7 GRID NO.		8 Operator Name <b>MEWBOURNE OIL COMPANY</b>			9 Elevation <b>3793'</b>

10 Surface Location

U/L or lot no.	Section	Township	Range	Lot Idn	Feet from the	North/South line	Feet from the	East/West line	County
<b>0</b>	<b>19</b>	<b>19S</b>	<b>35E</b>		<b>205</b>	<b>SOUTH</b>	<b>1340</b>	<b>EAST</b>	<b>LEA</b>

11 Bottom Hole Location If Different From Surface

U/L or lot no.	Section	Township	Range	Lot Idn	Feet from the	North/South line	Feet from the	East/West line	County
<b>B</b>	<b>18</b>	<b>19S</b>	<b>35E</b>		<b>100</b>	<b>NORTH</b>	<b>1900</b>	<b>EAST</b>	<b>LEA</b>

12 Dedicated Acres	13 Joint or Infill	14 Consolidation Code	15 Order No.
--------------------	--------------------	-----------------------	--------------

No allowable will be assigned to this completion until all interest have been consolidated or a non-standard unit has been approved by the division.

	<p><b>GEODETIC DATA</b> NAD 83 GRID - NW EAST</p> <p><b>SURFACE LOCATION</b> N: 597332.7 - E: 800198.0 LAT: 32.6392996° N LONG: 103.4923928° W</p> <p><b>BOTTOM HOLE</b> N: 607625.6 - E: 799547.8 LAT: 32.6676029° N LONG: 103.4942405° W</p> <p><b>CORNER DATA</b> NAD 83 GRID - NW EAST</p> <p>A: FOUND 1/2" REBAR N: 597100.9 - E: 796260.5</p> <p>B: FOUND BRASS CAP "1912" N: 602407.1 - E: 796215.0</p> <p>C: FOUND NAIL N: 605049.4 - E: 796190.5</p> <p>D: FOUND NAIL N: 607710.3 - E: 796174.1</p> <p>E: FOUND 1/2" REBAR N: 607733.7 - E: 796611.9</p> <p>F: CALCULATED CORNER N: 607704.4 - E: 801445.7</p> <p>G: FOUND 1/2" REBAR N: 605049.0 - E: 801488.8</p> <p>H: FOUND LIMESTONE ROCK N: 602432.6 - E: 801489.4</p> <p>I: FOUND 8"x4"x4" LIMESTONE ROCK N: 598776.8 - E: 801512.6</p> <p>J: FOUND 5/8" REBAR N: 597136.9 - E: 801539.8</p> <p>K: FOUND 1/2" REBAR N: 597119.0 - E: 796800.6</p> <p>L: FOUND 12"x6"x4" LIMESTONE ROCK N: 602406.9 - E: 796845.3</p>	<p><b>10 OPERATOR CERTIFICATION</b> I hereby certify that the information contained herein is true and a complete in the best of my knowledge and belief, and that this organization either owns a working interest or undivided mineral interest in the land including the proposed bottom hole location or has a right to drill this well at this location pursuant to a contract with the owner of such a mineral or working interest, or in a voluntary pooling agreement or a completed pooling order heretofore entered by the division.</p> <p>Signature: _____ Date: _____</p> <p>Printed Name: _____</p> <p>E-mail Address: _____</p>
	<p><b>11 SURVEYOR CERTIFICATION</b> I hereby certify that the well location shown on this plat was plotted from field notes of actual surveys made by me or under my supervision, and that the same is true and correct to the best of my belief.</p> <p><b>12/09/2021</b> Date of Survey</p> <p>Signature and Seal of Professional Surveyor: _____</p> <p><b>19680</b> Certificate Number</p> <p>REV: SL MOVE 06/08/22</p> <p><b>Job No: LS21121272R</b></p>	

District I  
1623 N. French Dr., Hobbs, NM 88240  
Phone: (575) 393-6161 Fax: (575) 393-0720  
District II  
811 S. First St., Artesia, NM 88210  
Phone: (575) 748-1283 Fax: (575) 748-9720  
District III  
1000 Rev. Beavers Road, Artesia, NM 87210  
Phone: (505) 334-6178 Fax: (505) 334-6170  
District IV  
1220 S. St. Francis Dr., Santa Fe, NM 87505  
Phone: (505) 476-3460 Fax: (505) 476-3462

State of New Mexico  
Energy, Minerals & Natural Resources Department  
OIL CONSERVATION DIVISION  
1220 South St. Francis Dr.  
Santa Fe, NM 87505

Form C-102  
Revised August 1, 2011  
Submit one copy to appropriate  
District Office

☐ AMENDED REPORT

WELL LOCATION AND ACREAGE DEDICATION PLAT

1 API Number		2 Pool Code		3 Pool Name	
4 Property Code		5 Property Name <b>SANTA VACA 19/18 B2PA FEE</b>			6 Well Number <b>1H</b>
7 OGRID NO		8 Operator Name <b>MEWBOURNE OIL COMPANY</b>			9 Elevation <b>3793'</b>
10 Surface Location					
UL or lot no <b>P</b>	Section <b>19</b>	Township <b>19S</b>	Range <b>35E</b>	Lot Idn	Feet from the <b>205</b>
		North/South line <b>SOUTH</b>		Feet from the <b>1280</b>	East/West line <b>EAST</b>
				County <b>LEA</b>	
11 Bottom Hole Location If Different From Surface					
UL or lot no <b>A</b>	Section <b>18</b>	Township <b>19S</b>	Range <b>35E</b>	Lot Idn	Feet from the <b>100</b>
		North/South line <b>NORTH</b>		Feet from the <b>500</b>	East/West line <b>EAST</b>
				County <b>LEA</b>	
12 Dedicated Acres	13 Joint or Infill	14 Consolidation Code	15 Order No.		

No allowable will be assigned to this completion until all interest have been consolidated or a non-standard unit has been approved by the division.

	<p><b>17 OPERATOR CERTIFICATION</b> I hereby certify that the information contained herein is true and I comply to the best of my knowledge and belief, and that this organization either owns a working interest or undivided mineral interest in the land including the proposed bottom hole location or has a right to drill the well at this location pursuant to a contract with an owner of such a mineral or working interest, or to a voluntary pooling agreement or a compulsory pooling under authority entered by the division.</p> <p>Signature _____ Date _____</p> <p>Printed Name _____</p> <p>E-mail Address _____</p>
	<p><b>18 SURVEYOR CERTIFICATION</b> I hereby certify that the well location shown on this plat was plotted from field notes of actual surveys made by me or under my supervision, and that the same is true and correct to the best of my belief.</p> <p><b>12/09/2021</b> Date of Survey</p> <p>Signature and Seal of Professional Surveyor _____</p> <p><b>19680</b> Certificate Number</p> <p>REV: SL MOVE 06/08/22</p>

Job No: LS21121274R

District I  
1605 N. French Dr., Hobbs, NM 88240  
Phone: (575) 393-6161 Fax: (575) 393-0720  
District II  
311 S. First St., Artesia, NM 88210  
Phone: (575) 748-1283 Fax: (575) 748-9720  
District III  
1000 Rio Brazos Road, Aztec, NM 87410  
Phone: (505) 354-6178 Fax: (505) 334-6170  
District IV  
1220 S. St. Francis Dr., Santa Fe, NM 87505  
Phone: (505) 476-3460 Fax: (505) 476-3462

State of New Mexico  
Energy, Minerals & Natural Resources Department  
OIL CONSERVATION DIVISION  
1220 South St. Francis Dr.  
Santa Fe, NM 87505

Form C-102  
Revised August 1, 2011  
Submit one copy to appropriate  
District Office

☐ AMENDED REPORT

WELL LOCATION AND ACREAGE DEDICATION PLAT

1 API Number		2 Pool Code		3 Pool Name	
4 Property Code		5 Property Name <b>SANTA VACA 19/18 B3MD STATE COM</b>			6 Well Number <b>1H</b>
7 OGRID NO.		8 Operator Name <b>MEWBOURNE OIL COMPANY</b>			9 Elevation <b>3788'</b>
10 Surface Location					
U/L or lot no. <b>N</b>	Section <b>19</b>	Township <b>19S</b>	Range <b>35E</b>	Lot Idn <b>205</b>	Feet from the North/South line <b>SOUTH</b>
				Feet from the East/West line <b>1350</b>	County <b>LEA</b>
11 Bottom Hole Location If Different From Surface					
U/L or lot no. <b>1</b>	Section <b>18</b>	Township <b>19S</b>	Range <b>35E</b>	Lot Idn <b>100</b>	Feet from the North/South line <b>NORTH</b>
				Feet from the East/West line <b>500</b>	County <b>LEA</b>
12 Dedicated Acres		13 Acre or Infill		14 Consolidation Code	
				15 Order No.	

No allowable will be assigned to this completion until all interest have been consolidated or a non-standard unit has been approved by the division.

	<p><b>CORNER DATA</b> NAD 83 GRID - NM EAST</p> <p>A: FOUND 1/2\" REBAR N: 597100.9 - E: 796260.5</p> <p>B: FOUND BRASS CAP \"1912\" N: 602407.1 - E: 796215.0</p> <p>C: FOUND NAIL N: 607716.3 - E: 796174.1</p> <p>D: FOUND 1/2\" REBAR N: 607733.7 - E: 796811.9</p> <p>E: CALCULATED CORNER N: 607704.4 - E: 801445.7</p> <p>F: FOUND 1/2\" REBAR N: 605049.0 - E: 801488.8</p> <p>G: FOUND LIMESTONE ROCK N: 602432.6 - E: 801489.4</p> <p>H: FOUND 8\"X4\"X4\" LIMESTONE ROCK N: 599776.8 - E: 801512.6</p> <p>I: FOUND 5/8\" REBAR N: 597136.9 - E: 801539.8</p> <p>J: FOUND 1/2\" REBAR N: 597119.0 - E: 796900.6</p> <p>K: FOUND 12\"X8\"X4\" LIMESTONE ROCK N: 602406.9 - E: 796845.3</p>	<p><b>11 OPERATOR CERTIFICATION</b> I hereby certify that the information contained herein is true and complete to the best of my knowledge and belief, and that this organization either owns a working interest or oil/mineral interest in the land including the proposed bottom hole location or has a right to drill this well at this location pursuant to a contract with an owner of such a mineral or working interest, or to a voluntary pooling agreement or a compulsory pooling order heretofore entered by the division.</p> <p>Signature: _____ Date: _____</p> <p>Printed Name: _____</p> <p>Typed Address: _____</p>
	<p><b>12 SURVEYOR CERTIFICATION</b> I hereby certify that the well location shown on this plat was plotted from field notes of actual surveys made by me or under my supervision, and that the same is true and correct to the best of my belief.</p> <p><b>05-21-2021</b> Date of Survey</p> <p>Signature and Seal of Professional Surveyor: </p> <p>Certificate Number: _____</p>	

Job No: LS21050528



District I  
1625 N. French Dr., Hobbs, NM 88240  
Phone: (575) 393-6161 Fax: (575) 393-0720

District II  
811 S. First St., Artesia, NM 88210  
Phone: (575) 748-1283 Fax: (575) 748-9720

District III  
1000 Rio Brazos Road, Artesia, NM 87410  
Phone: (505) 334-6178 Fax: (505) 334-6170

District IV  
1227 S. St. Francis Dr., Santa Fe, NM 87505  
Phone: (505) 476-3460 Fax: (505) 476-3462

State of New Mexico  
Energy, Minerals & Natural Resources Department  
OIL CONSERVATION DIVISION  
1220 South St. Francis Dr.  
Santa Fe, NM 87505

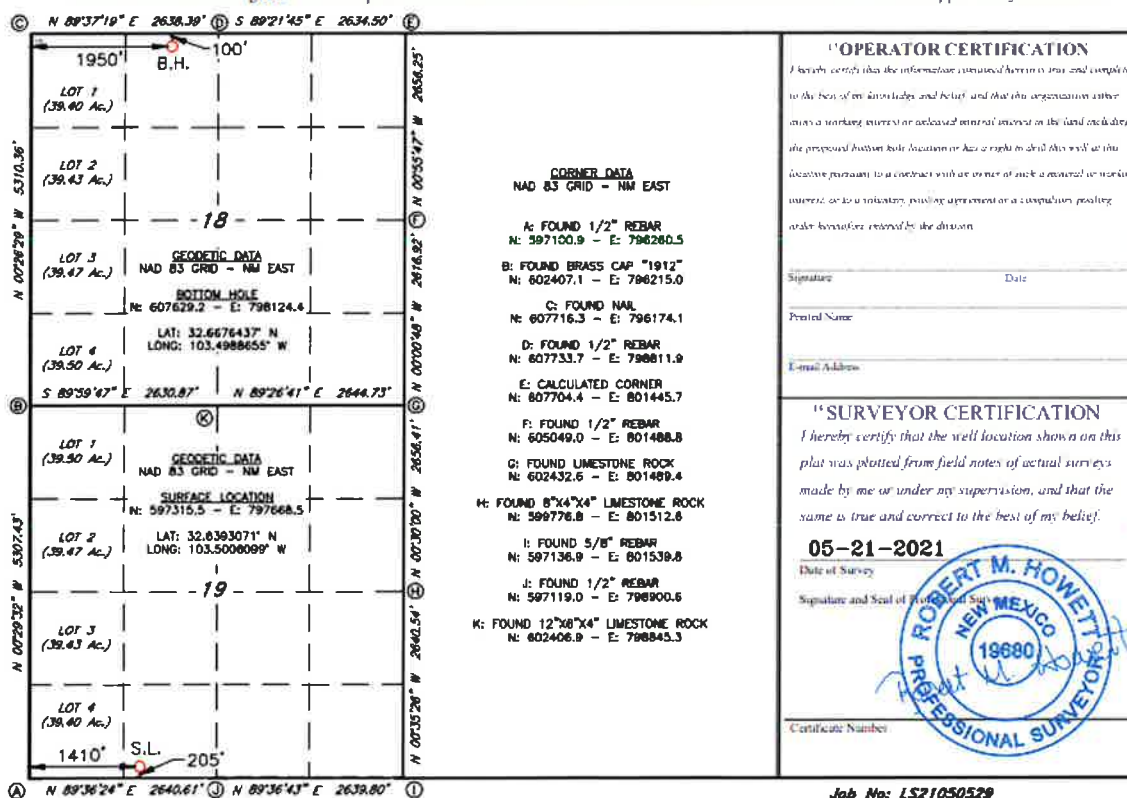
Form C-102  
Revised August 1, 2011  
Submit one copy to appropriate  
District Office

☐ AMENDED REPORT

WELL LOCATION AND ACREAGE DEDICATION PLAT

1 API Number		2 Pool Code		3 Pool Name	
4 Property Code		5 Property Name <b>SANTA VACA 19/18 B3NC STATE COM</b>			6 Well Number <b>1H</b>
7 GRID NO.		8 Operator Name <b>MEWBOURNE OIL COMPANY</b>			9 Elevation <b>3787'</b>
10 Surface Location					
UL or lot no. <b>N</b>	Section <b>19</b>	Township <b>19S</b>	Range <b>35E</b>	Lot 1dn <b>205</b>	Feet from the <b>SOUTH</b>
				Feet from the <b>1410</b>	East West line <b>WEST</b>
County <b>LEA</b>					
11 Bottom Hole Location If Different From Surface					
UL or lot no. <b>C</b>	Section <b>18</b>	Township <b>19S</b>	Range <b>35E</b>	Lot 1dn <b>100</b>	Feet from the <b>NORTH</b>
				Feet from the <b>1950</b>	East West line <b>WEST</b>
County <b>LEA</b>					
12 Dedicated Acres		13 Joint or Infill		14 Consolidation Code	
15 Order No.					

No allowable will be assigned to this completion until all interest have been consolidated or a non-standard unit has been approved by the division.



District I  
1625 N. French Dr., Hobbs, NM 88240  
Phone: (505) 393-6161 Fax: (505) 393-6720  
District II  
811 S. First St., Artesia, NM 88210  
Phone: (505) 748-1283 Fax: (505) 748-9720  
District III  
1000 Rio Brazos Road, Artesia, NM 87510  
Phone: (505) 334-6178 Fax: (505) 334-6170  
District IV  
1220 S. St. Francis Dr., Santa Fe, NM 87505  
Phone: (505) 476-3460 Fax: (505) 476-3462

State of New Mexico  
Energy, Minerals & Natural Resources Department  
OIL CONSERVATION DIVISION  
1220 South St. Francis Dr.  
Santa Fe, NM 87505

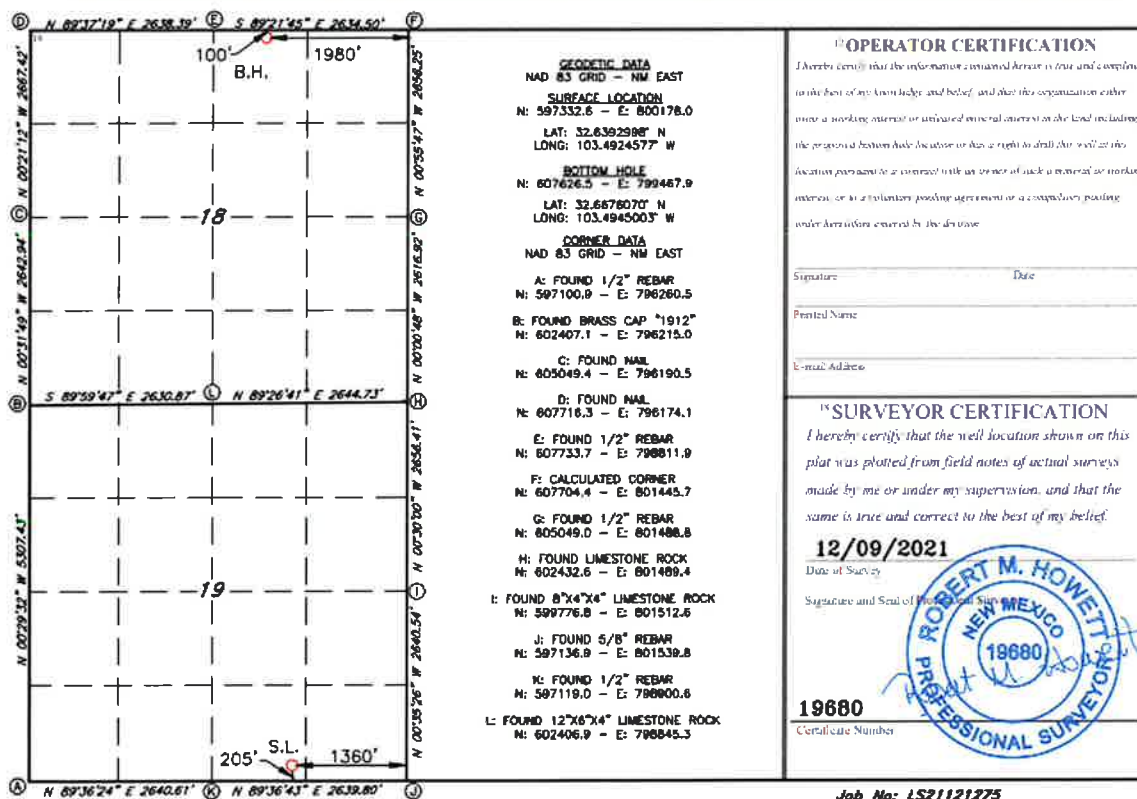
Form C-102  
Revised August 1, 2011  
Submit one copy to appropriate  
District Office

☐ AMENDED REPORT

WELL LOCATION AND ACREAGE DEDICATION PLAT

1 API Number		2 Pool Code		3 Pool Name	
4 Property Code		5 Property Name <b>SANTA VACA 19/18 B30B FEE</b>			6 Well Number <b>1H</b>
7 GRID NO.		8 Operator Name <b>MEWBOURNE OIL COMPANY</b>			9 Elevation <b>3793'</b>
10 Surface Location					
UL or lot no. <b>0</b>	Section <b>19</b>	Township <b>19S</b>	Range <b>35E</b>	Lot Idn <b>205</b>	Feet from the <b>SOUTH</b>
				Feet from the <b>1360</b>	East West line <b>EAST</b>
County <b>LEA</b>					
11 Bottom Hole Location If Different From Surface					
UL or lot no. <b>B</b>	Section <b>18</b>	Township <b>19S</b>	Range <b>35E</b>	Lot Idn <b>100</b>	Feet from the <b>NORTH</b>
				Feet from the <b>1980</b>	East West line <b>EAST</b>
County <b>LEA</b>					
12 Dedicated Acres		13 Joint or Infill		14 Consolidation Code	
15 Order No.					

No allowable will be assigned to this completion until all interest have been consolidated or a non-standard unit has been approved by the division.





District I  
1625 N. French Dr., Hobbs, NM 88240  
Phone: (575) 395-4161 Fax: (575) 393-0720  
District II  
811 S. First St., Artesia, NM 88201  
Phone: (505) 748-1283 Fax: (505) 748-9720  
District III  
1000 Rio Brazos Road, Artesia, NM 87410  
Phone: (505) 334-6178 Fax: (505) 334-6070  
District IV  
1220 S. St. Francis Dr., Santa Fe, NM 87505  
Phone: (505) 476-3460 Fax: (505) 476-3462

State of New Mexico  
Energy, Minerals & Natural Resources Department  
OIL CONSERVATION DIVISION  
1220 South St. Francis Dr.  
Santa Fe, NM 87505

Form C-102  
Revised August 1, 2011  
Submit one copy to appropriate  
District Office

☐ AMENDED REPORT

WELL LOCATION AND ACREAGE DEDICATION PLAT

1 APN Number	2 Pool Code	3 Pool Name
4 Property Code	5 Property Name <b>SANTA VACA 19/18 B3PA FEE</b>	6 Well Number <b>1H</b>
7 OGRID NO	8 Operator Name <b>MEWBOURNE OIL COMPANY</b>	9 Elevation <b>3792'</b>

10 Surface Location

U/L or lot no.	Section	Township	Range	Lot Idn	Feet from the	North/South line	Feet from the	East/West line	County
<b>P</b>	<b>19</b>	<b>19S</b>	<b>35E</b>		<b>205</b>	<b>SOUTH</b>	<b>1300</b>	<b>EAST</b>	<b>LEA</b>

11 Bottom Hole Location If Different From Surface

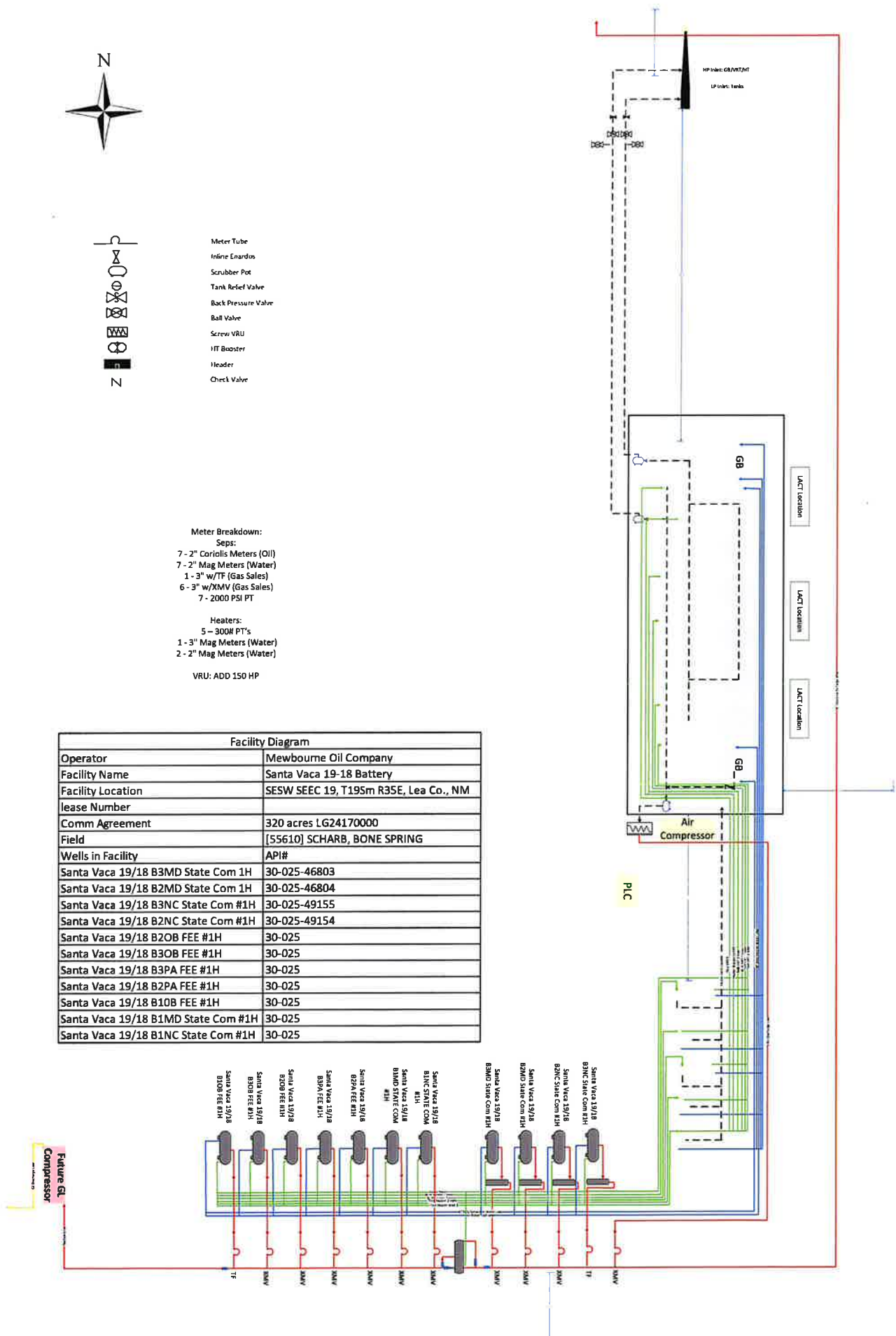
U/L or lot no.	Section	Township	Range	Lot Idn	Feet from the	North/South line	Feet from the	East/West line	County
<b>A</b>	<b>18</b>	<b>19S</b>	<b>35E</b>		<b>100</b>	<b>NORTH</b>	<b>660</b>	<b>EAST</b>	<b>LEA</b>

12 Dedicated Acres	13 Joint or Infill	14 Consolidation Code	15 Order No.

No allowable will be assigned to this completion until all interest have been consolidated or a non-standard unit has been approved by the division.

	<p><b>GEODETIC DATA</b> NAD 83 GRID - NM EAST</p> <p><b>SURFACE LOCATION</b> N: 597333.0 - E: 800238.0 LAT: 32.6362996° N LONG: 103.4922628° W</p> <p><b>BOTTOM HOLE</b> N: 607611.8 - E: 800787.5 LAT: 32.6575379° N LONG: 103.4902127° W</p> <p><b>CORNER DATA</b> NAD 83 GRID - NM EAST</p> <p>A: FOUND 1/2" REBAR N: 597100.9 - E: 796260.5</p> <p>B: FOUND BRASS CAP "1912" N: 602407.1 - E: 796215.0</p> <p>C: FOUND NAIL N: 605049.4 - E: 796190.5</p> <p>D: FOUND NAIL N: 607716.3 - E: 796174.1</p> <p>E: FOUND 1/2" REBAR N: 607733.7 - E: 796611.9</p> <p>F: CALCULATED CORNER N: 607704.4 - E: 801445.7</p> <p>G: FOUND 1/2" REBAR N: 605049.0 - E: 801488.8</p> <p>H: FOUND LIMESTONE ROCK N: 602432.6 - E: 801489.4</p> <p>I: FOUND 8"x4"x4" LIMESTONE ROCK N: 598776.8 - E: 801512.5</p> <p>J: FOUND 5/8" REBAR N: 597136.9 - E: 801539.8</p> <p>K: FOUND 1/2" REBAR N: 597119.0 - E: 796900.8</p> <p>L: FOUND 12"x6"x4" LIMESTONE ROCK N: 602406.9 - E: 796845.3</p>	<p><b>11 OPERATOR CERTIFICATION</b> I hereby certify that the information contained herein is true and complete to the best of my knowledge and belief, and that this information either shows a working interest or mineral interest in the land including the proposed bottom hole location or has a right to drill the well at the location pursuant to a contract with an owner of such a mineral or working interest or in a voluntary pooling agreement or a compulsory pooling under authority granted by the division.</p> <p>Signature: _____ Date: _____</p> <p>Printed Name: _____</p> <p>E-mail Address: _____</p>
		<p><b>12 SURVEYOR CERTIFICATION</b> I hereby certify that the well location shown on this plat was plotted from field notes of actual surveys made by me or under my supervision, and that the same is true and correct to the best of my belief.</p> <p><b>12/09/2021</b> Date of Survey</p> <p>Signature and Seal of Professional Surveyor: </p> <p><b>19680</b> Certificate Number</p>

Job No: LS21121276

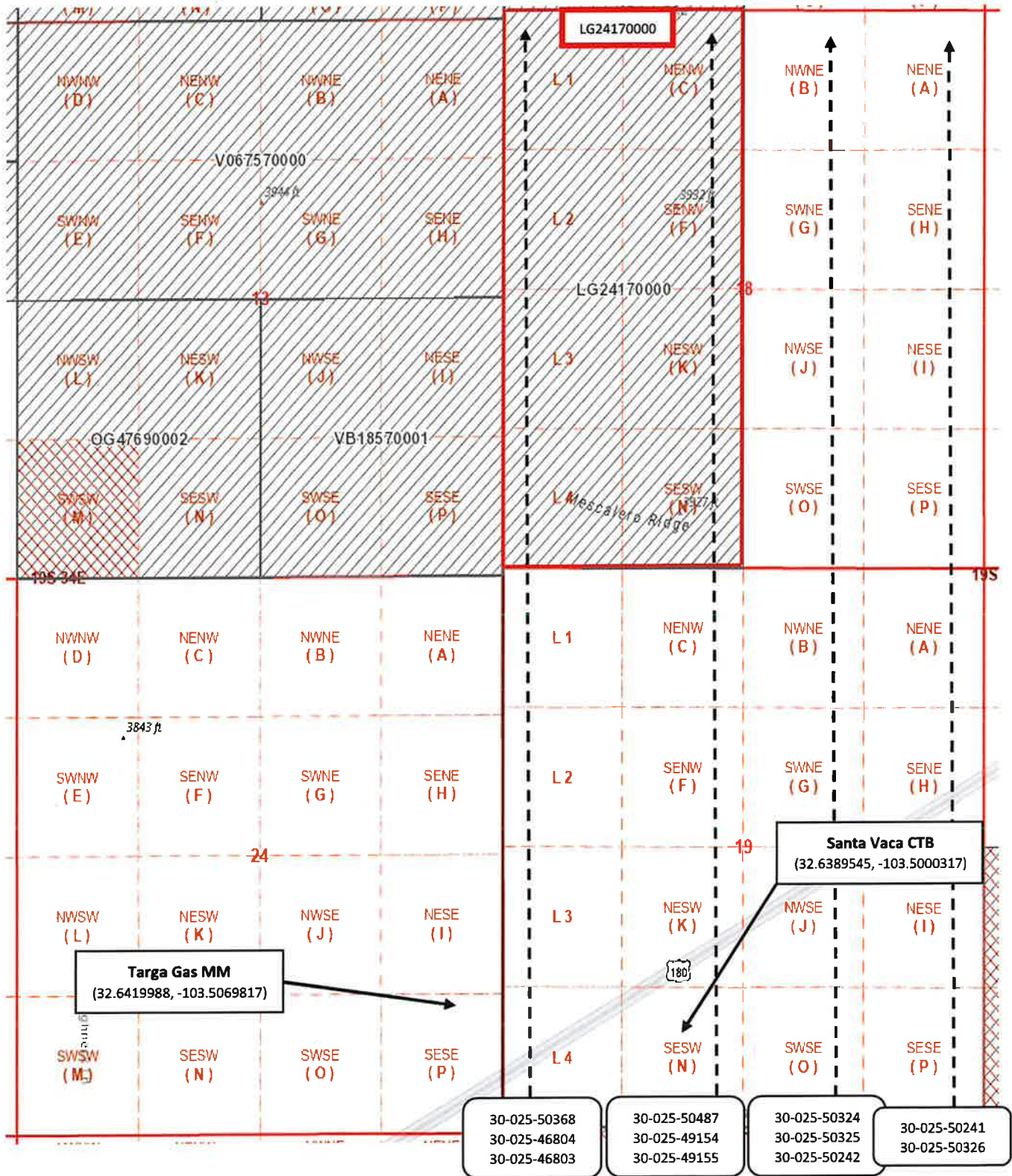








## LEASE BOUNDARY MAP:



Revised March 23, 2017

RECEIVED:	REVIEWER:	TYPE:	APP NO:
-----------	-----------	-------	---------

ABOVE THIS TABLE FOR OCD DIVISION USE ONLY

**NEW MEXICO OIL CONSERVATION DIVISION**  
 - Geological & Engineering Bureau -  
 1220 South St. Francis Drive, Santa Fe, NM 87505

**ADMINISTRATIVE APPLICATION CHECKLIST**

THIS CHECKLIST IS MANDATORY FOR ALL ADMINISTRATIVE APPLICATIONS FOR EXCEPTIONS TO DIVISION RULES AND  
 REGULATIONS WHICH REQUIRE PROCESSING AT THE DIVISION LEVEL IN SANTA FE

**Applicant:** Mewbourne Oil Company**OGRID Number:** 14744**Well Name:** Santa Vaca 19-18 B1MD State Com 1H**API:** 30-025-50368**Pool:** Scharb; Bone Spring**Pool Code:** 55610

**SUBMIT ACCURATE AND COMPLETE INFORMATION REQUIRED TO PROCESS THE TYPE OF APPLICATION  
 INDICATED BELOW**

**1) TYPE OF APPLICATION:** Check those which apply for [A]

A. Location – Spacing Unit – Simultaneous Dedication

☐ NSL☐ NSP (PROJECT AREA)☐ NSP (PRORATION UNIT)☐ SD

B. Check one only for [ I ] or [ II ]

[ I ] Commingling – Storage – Measurement

☐ DHC☒ CTB☐ PLC☐ PC☐ OLS☐ OLM

[ II ] Injection – Disposal – Pressure Increase – Enhanced Oil Recovery

☐ WFX☐ PMX☐ SWD☐ IPI☐ EOR☐ PPR**2) NOTIFICATION REQUIRED TO:** Check those which apply.A. ☐ Offset operators or lease holdersB. ☒ Royalty, overriding royalty owners, revenue ownersC. ☐ Application requires published noticeD. ☒ Notification and/or concurrent approval by SLOE. ☐ Notification and/or concurrent approval by BLMF. ☐ Surface ownerG. ☐ For all of the above, proof of notification or publication is attached, and/or,H. ☐ No notice required**FOR OCD ONLY**☐

Notice Complete

☐Application  
Content  
Complete

**3) CERTIFICATION:** I hereby certify that the information submitted with this application for  
 administrative approval is **accurate** and **complete** to the best of my knowledge. I also  
 understand that **no action** will be taken on this application until the required information and  
 notifications are submitted to the Division.

**Note: Statement must be completed by an individual with managerial and/or supervisory capacity.**

Chad Cole

Print or Type Name

Chad Cole

Signature

9/19/2022

Date

575-393-5905

Phone Number

ccole@mewbourne.com

e-mail Address

Revised March 23, 2017

RECEIVED:	REVIEWER:	TYPE:	APP NO:
-----------	-----------	-------	---------

ABOVE THIS TABLE FOR OCD DIVISION USE ONLY

**NEW MEXICO OIL CONSERVATION DIVISION**  
 - Geological & Engineering Bureau -  
 1220 South St. Francis Drive, Santa Fe, NM 87505

**ADMINISTRATIVE APPLICATION CHECKLIST**

THIS CHECKLIST IS MANDATORY FOR ALL ADMINISTRATIVE APPLICATIONS FOR EXCEPTIONS TO DIVISION RULES AND  
 REGULATIONS WHICH REQUIRE PROCESSING AT THE DIVISION LEVEL IN SANTA FE

**Applicant:** Mewbourne Oil Company**OGRID Number:** 14744**Well Name:** Santa Vaca 19-18 B1MD State Com 1H**API:** 30-025-50368**Pool:** Scharb; Bone Spring**Pool Code:** 55610

**SUBMIT ACCURATE AND COMPLETE INFORMATION REQUIRED TO PROCESS THE TYPE OF APPLICATION  
 INDICATED BELOW**

**1) TYPE OF APPLICATION:** Check those which apply for [A]

A. Location – Spacing Unit – Simultaneous Dedication

☐ NSL☐ NSP (PROJECT AREA)☐ NSP (PRORATION UNIT)☐ SD

B. Check one only for [ I ] or [ II ]

[ I ] Commingling – Storage – Measurement

☐ DHC☐ CTB☐ PLC☒ PC☐ OLS☐ OLM

[ II ] Injection – Disposal – Pressure Increase – Enhanced Oil Recovery

☐ WFX☐ PMX☐ SWD☐ IPI☐ EOR☐ PPR**2) NOTIFICATION REQUIRED TO:** Check those which apply.A. ☐ Offset operators or lease holdersB. ☒ Royalty, overriding royalty owners, revenue ownersC. ☐ Application requires published noticeD. ☒ Notification and/or concurrent approval by SLOE. ☐ Notification and/or concurrent approval by BLMF. ☐ Surface ownerG. ☐ For all of the above, proof of notification or publication is attached, and/or,H. ☐ No notice required**FOR OCD ONLY**☐ Notice Complete☐ Application  
Content  
Complete

**3) CERTIFICATION:** I hereby certify that the information submitted with this application for  
 administrative approval is **accurate** and **complete** to the best of my knowledge. I also  
 understand that **no action** will be taken on this application until the required information and  
 notifications are submitted to the Division.

**Note: Statement must be completed by an individual with managerial and/or supervisory capacity.**

Chad Cole

Print or Type Name

Chad Cole

Signature

9/19/2022

Date

575-393-5905

Phone Number

ccole@mewbourne.com

e-mail Address



Revised March 23, 2017

RECEIVED:	REVIEWER:	TYPE:	APP NO:
-----------	-----------	-------	---------

ABOVE THIS TABLE FOR OCD DIVISION USE ONLY

**NEW MEXICO OIL CONSERVATION DIVISION**  
 - Geological & Engineering Bureau -  
 1220 South St. Francis Drive, Santa Fe, NM 87505

**ADMINISTRATIVE APPLICATION CHECKLIST**

THIS CHECKLIST IS MANDATORY FOR ALL ADMINISTRATIVE APPLICATIONS FOR EXCEPTIONS TO DIVISION RULES AND  
 REGULATIONS WHICH REQUIRE PROCESSING AT THE DIVISION LEVEL IN SANTA FE

**Applicant:** Mewbourne Oil Company**OGRID Number:** 14744**Well Name:** Santa Vaca 19-18 B1MD State Com 1H**API:** 30-025-50368**Pool:** Scharb; Bone Spring**Pool Code:** 55610

**SUBMIT ACCURATE AND COMPLETE INFORMATION REQUIRED TO PROCESS THE TYPE OF APPLICATION  
 INDICATED BELOW**

**1) TYPE OF APPLICATION:** Check those which apply for [A]

A. Location – Spacing Unit – Simultaneous Dedication

☐ NSL☐ NSP (PROJECT AREA)☐ NSP (PRORATION UNIT)☐ SD

B. Check one only for [ I ] or [ II ]

[ I ] Commingling – Storage – Measurement

☐ DHC☐ CTB☐ PLC☐ PC☐ OLS☒ OLM

[ II ] Injection – Disposal – Pressure Increase – Enhanced Oil Recovery

☐ WFX☐ PMX☐ SWD☐ IPI☐ EOR☐ PPR**2) NOTIFICATION REQUIRED TO:** Check those which apply.A. ☐ Offset operators or lease holdersB. ☒ Royalty, overriding royalty owners, revenue ownersC. ☐ Application requires published noticeD. ☒ Notification and/or concurrent approval by SLOE. ☐ Notification and/or concurrent approval by BLMF. ☐ Surface ownerG. ☐ For all of the above, proof of notification or publication is attached, and/or,H. ☐ No notice required**FOR OCD ONLY**☐

Notice Complete

☐Application  
Content  
Complete

**3) CERTIFICATION:** I hereby certify that the information submitted with this application for administrative approval is **accurate** and **complete** to the best of my knowledge. I also understand that **no action** will be taken on this application until the required information and notifications are submitted to the Division.

**Note: Statement must be completed by an individual with managerial and/or supervisory capacity.**

Chad Cole

Print or Type Name

Chad Cole

Signature

9/19/2022

Date

575-393-5905

Phone Number

ccole@mewbourne.com

e-mail Address

District I  
1625 N. French Drive, Hobbs, NM 88240  
District II  
811 S. First St., Artesia, NM 88210  
District III  
1000 Rio Brazos Road, Aztec, NM 87410  
District IV  
1220 S. St Francis Dr, Santa Fe, NM  
87505

State of New Mexico  
Energy, Minerals and Natural Resources Department

Form C-107-B  
Revised August 1, 2011

### OIL CONSERVATION DIVISION

1220 S. St Francis Drive  
Santa Fe, New Mexico 87505

Submit the original  
application to the Santa Fe  
office with one copy to the  
appropriate District Office.

#### APPLICATION FOR SURFACE COMMINGLING (DIVERSE OWNERSHIP)

OPERATOR NAME: Mewbourne Oil Company

OPERATOR ADDRESS: 4801 Business Park BLVD PO Box 5270 Hobbs NM 88240

APPLICATION TYPE:

☐ Pool Commingling ☐ Lease Commingling ☒ Pool and Lease Commingling ☐ Off-Lease Storage and Measurement (Only if not Surface Commingled)

LEASE TYPE: ☒ Fee ☒ State ☐ Federal

Is this an Amendment to existing Order? ☐ Yes ☒ No If "Yes", please include the appropriate Order No.

Have the Bureau of Land Management (BLM) and State Land office (SLO) been notified in writing of the proposed commingling

☒ Yes ☐ No

#### (A) POOL COMMINGLING

Please attach sheets with the following information

(1) Pool Names and Codes	Gravities / BTU of Non-Commingled Production	Calculated Gravities / BTU of Commingled Production		Calculated Value of Commingled Production	Volumes

(2) Are any wells producing at top allowables? ☒ Yes ☐ No

(3) Has all interest owners been notified by certified mail of the proposed commingling? ☒ Yes ☐ No.

(4) Measurement type: ☒ Metering ☐ Other (Specify)

(5) Will commingling decrease the value of production? ☐ Yes ☒ No If "yes", describe why commingling should be approved

#### (B) LEASE COMMINGLING

Please attach sheets with the following information

(1) Pool Name and Code.

(2) Is all production from same source of supply? ☒ Yes ☐ No

(3) Has all interest owners been notified by certified mail of the proposed commingling? ☒ Yes ☐ No

(4) Measurement type: ☒ Metering ☐ Other (Specify)

#### (C) POOL and LEASE COMMINGLING

Please attach sheets with the following information

(1) Complete Sections A and E.

#### (D) OFF-LEASE STORAGE and MEASUREMENT

Please attached sheets with the following information

(1) Is all production from same source of supply? ☐ Yes ☐ No

(2) Include proof of notice to all interest owners.

#### (E) ADDITIONAL INFORMATION (for all application types)

Please attach sheets with the following information

(1) A schematic diagram of facility, including legal location.

(2) A plat with lease boundaries showing all well and facility locations. Include lease numbers if Federal or State lands are involved.

(3) Lease Names, Lease and Well Numbers, and API Numbers.

I hereby certify that the information above is true and complete to the best of my knowledge and belief.

SIGNATURE: Chad Cole TITLE: Regulatory Specialist DATE: 9/19/2022

TYPE OR PRINT NAME Chad Cole TELEPHONE NO.: 575-393-5905

E-MAIL ADDRESS: ccole@mewbourne.com

Well Name	Location	API #	Pool #	MCFPD	Dry BTU @ 14.73 PSI
<b>SANTA VACA 19/18 B1MD State Com 1H</b>	205' FSL & 1640' FWL, Sec 19, T19S, R35E	30-025-50368	[55610] SCHARB; BONE SPRING	~3000	~1250
<b>SANTA VACA 19/18 B1NC State Com 1H</b>	205' FSL & 1660' FWL, Sec 19, T19S, R35E	30-025-50487	[55610] SCHARB; BONE SPRING	~3000	~1250
<b>SANTA VACA 19/18 B1OB FEE 1H</b>	205' FSL & 1320' FEL, Sec 19, T19S, R35E	30-025-50324	[49553] PALMILLO; BONE SPRING, EAST	~3000	~1250
<b>SANTA VACA 19/18 B2MD State Com 1H</b>	205' FSL & 1380' FWL, Sec 19, T19S, R35E	30-025-46804	[55610] SCHARB; BONE SPRING	~3000	~1250
<b>SANTA VACA 19/18 B2NC State Com 1H</b>	205' FSL & 1980' FWL, Sec 19, T19S, R35E	30-025-49154	[55610] SCHARB; BONE SPRING	~3000	~1250
<b>SANTA VACA 19/18 B2OB FEE 1H</b>	205' FSL & 1340' FEL, Sec 19, T19S, R35E	30-025-50325	[55610] SCHARB; BONE SPRING	~3000	~1250
<b>SANTA VACA 19/18 B2PA FEE 1H</b>	205' FSL & 1270' FEL, Sec 19, T19S, R35E	30-025-50241	[55610] SCHARB; BONE SPRING	~3000	~1250
<b>SANTA VACA 19/18 B3MD State Com 1H</b>	205' FSL & 1350' FWL, Sec 19, T19S, R35E	30-025-46803	[55610] SCHARB; BONE SPRING	~3000	~1250
<b>SANTA VACA 19/18 B3NC State Com 1H</b>	205' FSL & 1410' FWL, Sec 19, T19S, R35E	30-025-49155	[55610] SCHARB; BONE SPRING	~3000	~1250
<b>SANTA VACA 19/18 B3OB FEE 1H</b>	205' FSL & 1360' FEL, Sec 19, T19S, R35E	30-025-50242	[55610] SCHARB; BONE SPRING	~3000	~1250
<b>SANTA VACA 19/18 B3PA FEE 1H</b>	205' FSL & 1300' FEL, Sec 19, T19S, R35E	30-025-50326	[49553] PALMILLO; BONE SPRING, EAST	~3000	~1250

**MEWBOURNE OIL COMPANY**500 WEST TEXAS AVENUE, SUITE 1020  
MIDLAND, TEXAS 79701-4279

TELEPHONE (432) 682-3715

October 4, 2022

Via Certified Mail

See Attached Address List

Re: Application for Central Tank Battery, Lease Commingle, Off Lease Measurement, Sales,  
& StorageSANTA VACA 19/18 B1MD State Com #1H  
API# 30-025-50368  
205' FSL & 1640' FWL  
Section 19, T19S, R35E  
Lea County, New MexicoSANTA VACA 19/18 B1NC State Com #1H  
API# 30-025-50487  
205' FSL & 1660' FWL  
Section 19, T19S, R35E  
Lea County, New MexicoSANTA VACA 19/18 B1OB FEE #1H  
API# 30-025-50324  
205' FSL & 1320' FWL  
Section 19, T19S, R35E  
Lea County, New MexicoSANTA VACA 19/18 B1OB FEE #1H  
API# 30-025-46804  
205' FSL & 1380' FWL  
Section 19, T19S, R35E  
Lea County, New MexicoSANTA VACA 19/18 B2NC State Com #1H  
API# 30-025-49154  
205' FSL & 1980' FWL  
Section 19, T19S, R35E  
Lea County, New MexicoSANTA VACA 19/18 B2NC State Com #1H  
API# 30-025-50325  
205' FSL & 1340' FWL  
Section 19, T19S, R35E  
Lea County, New MexicoSANTA VACA 19/18 B2NC State Com #1H  
API# 30-025-50241  
205' FSL & 1270' FWL  
Section 19, T19S, R35E  
Lea County, New MexicoSANTA VACA 19/18 B2NC State Com #1H  
API# 30-025-46803  
205' FSL & 1350' FWL  
Section 19, T19S, R35E  
Lea County, New MexicoSANTA VACA 19/18 B2NC State Com #1H  
API# 30-025-49155  
205' FSL & 1410' FWL  
Section 19, T19S, R35E  
Lea County, New MexicoSANTA VACA 19/18 B2NC State Com #1H  
API# 30-025-50242  
205' FSL & 1360' FWL  
Section 19, T19S, R35E  
Lea County, New MexicoSANTA VACA 19/18 B2NC State Com #1H  
API# 30-025-50326  
205' FSL & 1300' FWL  
Section 19, T19S, R35E  
Lea County, New Mexico

Ladies and Gentlemen:

Mewbourne Oil Company ("Mewbourne") has filed an application with the New Mexico Oil Conservation Division ("Division") seeking authorization for a Central Tank Battery, Lease Commingle, and have Off Lease Measurement, Sales, and Storage for the above captioned wells.

The SANTA VACA 19/18 B1MD State Com #1H, SANTA VACA 19/18 B1NC State Com #1H, SANTA VACA 19/18 B1OB FEE #1H, SANTA VACA 19/18 B1OB FEE #1H, SANTA VACA 19/18 B2NC State Com #1H, SANTA VACA 19/18 B2NC State Com #1H, SANTA VACA 19/18 B2NC State Com #1H, SANTA VACA 19/18 B2NC State Com #1H, SANTA VACA 19/18 B2NC State Com #1H, and the SANTA VACA 19/18 B2NC State Com #1H wells are on State Lease LG 2417 (237.8 acres), and multiple fee leases (1037.8 acres) which all comprise ALL of Section 18 and ALL of Section 19, T19S, R35E, Lea County, New Mexico.

All oil production from these wells is to be stored in a central tank battery in the SE4SW4 of Section 19, T19S, R35E, Lea County, New Mexico. The gas production from these wells will be allocated then combined and measured by Targa Common Gas Sales Meter #118001368 located Off Lease in the SE4SE4 of Section 24, T19S, R34E, Lea County, New Mexico. Mewbourne will allocate oil & gas production based on the allocation meters.

If you object to the either application, you must notify the Division in writing no later than 20 days from the date of this letter (the Division's address is 1220 South St. Francis Drive, Santa Fe, New Mexico 87505). Failure to object will preclude you from contesting this matter later.

Should you have any questions regarding the above, please email Chad Cole at [ccole@mewbourne.com](mailto:ccole@mewbourne.com) or call him at (575) 393-5905.

Sincerely,

**MEWBOURNE OIL COMPANY**



Brad Dunn  
Landman

Released to Imaging: 9/15/2025 3:01:29 PM



District I

1625 N. French Drive, Hobbs, NM 88240

District II

811 S. First St., Artesia, NM 88210

District III

1000 Rio Brazos Road, Aztec, NM 87410

District IV1220 S. St Francis Dr, Santa Fe, NM  
87505

State of New Mexico

Energy, Minerals and Natural Resources Department

Form C-107-B

Revised August 1, 2011

**OIL CONSERVATION DIVISION**1220 S. St Francis Drive  
Santa Fe, New Mexico 87505

Submit the original application to the Santa Fe office with one copy to the appropriate District Office.

**APPLICATION FOR SURFACE COMMINGLING (DIVERSE OWNERSHIP)**

OPERATOR NAME: Mewbourne Oil Company

OPERATOR ADDRESS: 4801 Business Park BLVD PO Box 5270 Hobbs NM 88240

APPLICATION TYPE:

☐ Pool Commingling    ☐ Lease Commingling    ☒ Pool and Lease Commingling    ☐ Off-Lease Storage and Measurement (Only if not Surface Commingled)
LEASE TYPE:    ☒ Fee    ☒ State    ☐ FederalIs this an Amendment to existing Order?    ☐ Yes    ☒ No    If "Yes", please include the appropriate Order No. \_\_\_\_\_

Have the Bureau of Land Management (BLM) and State Land office (SLO) been notified in writing of the proposed commingling

☒ Yes    ☐ No**(A) POOL COMMINGLING**

Please attach sheets with the following information

(1) Pool Names and Codes	Gravities / BTU of Non-Commingle Production	Calculated Gravities / BTU of Commingled Production		Calculated Value of Commingled Production	Volumes

(2) Are any wells producing at top allowables?    ☒ Yes    ☐ No(3) Has all interest owners been notified by certified mail of the proposed commingling?    ☒ Yes    ☐ No.(4) Measurement type:    ☒ Metering    ☐ Other (Specify)(5) Will commingling decrease the value of production?    ☐ Yes    ☒ No    If "yes", describe why commingling should be approved**(B) LEASE COMMINGLING**

Please attach sheets with the following information

(1) Pool Name and Code.

(2) Is all production from same source of supply?    ☒ Yes    ☐ No(3) Has all interest owners been notified by certified mail of the proposed commingling?    ☒ Yes    ☐ No(4) Measurement type:    ☒ Metering    ☐ Other (Specify)**(C) POOL and LEASE COMMINGLING**

Please attach sheets with the following information

(1) Complete Sections A and E.

**(D) OFF-LEASE STORAGE and MEASUREMENT**

Please attached sheets with the following information

(1) Is all production from same source of supply?    ☐ Yes    ☐ No

(2) Include proof of notice to all interest owners.

**(E) ADDITIONAL INFORMATION (for all application types)**

Please attach sheets with the following information

(1) A schematic diagram of facility, including legal location.

(2) A plat with lease boundaries showing all well and facility locations. Include lease numbers if Federal or State lands are involved.

(3) Lease Names, Lease and Well Numbers, and API Numbers.

I hereby certify that the information above is true and complete to the best of my knowledge and belief.

SIGNATURE: Chad Cole TITLE: Regulatory Specialist DATE: 9/19/2022

TYPE OR PRINT NAME: Chad Cole TELEPHONE NO.: 575-393-5905

E-MAIL ADDRESS: ccole@mewbourne.com

Well Name	Location	API #	Pool #	MCFPD	Dry BTU @ 14.73 PSI
<b>SANTA VACA 19/18 B1MD State Com 1H</b>	205' FSL & 1640' FWL, Sec 19, T19S, R35E	30-025-50368	[55610] SCHARB; BONE SPRING	~3000	~1250
<b>SANTA VACA 19/18 B1NC State Com 1H</b>	205' FSL & 1660' FWL, Sec 19, T19S, R35E	30-025-50487	[55610] SCHARB; BONE SPRING	~3000	~1250
<b>SANTA VACA 19/18 B1OB FEE 1H</b>	205' FSL & 1320' FEL, Sec 19, T19S, R35E	30-025-50324	[49553] PALMILLO; BONE SPRING, EAST	~3000	~1250
<b>SANTA VACA 19/18 B2MD State Com 1H</b>	205' FSL & 1380' FWL, Sec 19, T19S, R35E	30-025-46804	[55610] SCHARB; BONE SPRING	~3000	~1250
<b>SANTA VACA 19/18 B2NC State Com 1H</b>	205' FSL & 1980' FWL, Sec 19, T19S, R35E	30-025-49154	[55610] SCHARB; BONE SPRING	~3000	~1250
<b>SANTA VACA 19/18 B2OB FEE 1H</b>	205' FSL & 1340' FEL, Sec 19, T19S, R35E	30-025-50325	[55610] SCHARB; BONE SPRING	~3000	~1250
<b>SANTA VACA 19/18 B2PA FEE 1H</b>	205' FSL & 1270' FEL, Sec 19, T19S, R35E	30-025-50241	[55610] SCHARB; BONE SPRING	~3000	~1250
<b>SANTA VACA 19/18 B3MD State Com 1H</b>	205' FSL & 1350' FWL, Sec 19, T19S, R35E	30-025-46803	[55610] SCHARB; BONE SPRING	~3000	~1250
<b>SANTA VACA 19/18 B3NC State Com 1H</b>	205' FSL & 1410' FWL, Sec 19, T19S, R35E	30-025-49155	[55610] SCHARB; BONE SPRING	~3000	~1250
<b>SANTA VACA 19/18 B3OB FEE 1H</b>	205' FSL & 1360' FEL, Sec 19, T19S, R35E	30-025-50242	[55610] SCHARB; BONE SPRING	~3000	~1250
<b>SANTA VACA 19/18 B3PA FEE 1H</b>	205' FSL & 1300' FEL, Sec 19, T19S, R35E	30-025-50326	[49553] PALMILLO; BONE SPRING, EAST	~3000	~1250

**APPLICATION FOR LEASE COMMINGLING, CENTRAL TANK BATTERY (CTB)****Commingling procedure for Santa Vaca leases:**

Mewbourne Oil Company is requesting approval for lease commingling production from 11 wells located on State leases below in a Central Tank Battery "CTB":

<b>Well Name</b>	<b>Location</b>	<b>API #</b>	<b>Pool #</b>	<b>MCFPD</b>	<b>Dry BTU @ 14.73 PSI</b>
<b>SANTA VACA 19/18 B1MD State Com 1H</b>	205' FSL & 1640' FWL, Sec 19, T19S, R35E	30-025-50368	[55610] SCHARB; BONE SPRING	~3000	~1250
<b>SANTA VACA 19/18 B1NC State Com 1H</b>	205' FSL & 1660' FWL, Sec 19, T19S, R35E	30-025-50487	[55610] SCHARB; BONE SPRING	~3000	~1250
<b>SANTA VACA 19/18 B1OB FEE 1H</b>	205' FSL & 1320' FEL, Sec 19, T19S, R35E	30-025-50324	[49553] PALMILLO; BONE SPRING, EAST	~3000	~1250
<b>SANTA VACA 19/18 B2MD State Com 1H</b>	205' FSL & 1380' FWL, Sec 19, T19S, R35E	30-025-46804	[55610] SCHARB; BONE SPRING	~3000	~1250
<b>SANTA VACA 19/18 B2NC State Com 1H</b>	205' FSL & 1980' FWL, Sec 19, T19S, R35E	30-025-49154	[55610] SCHARB; BONE SPRING	~3000	~1250
<b>SANTA VACA 19/18 B2OB FEE 1H</b>	205' FSL & 1340' FEL, Sec 19, T19S, R35E	30-025-50325	[55610] SCHARB; BONE SPRING	~3000	~1250
<b>SANTA VACA 19/18 B2PA FEE 1H</b>	205' FSL & 1270' FEL, Sec 19, T19S, R35E	30-025-50241	[55610] SCHARB; BONE SPRING	~3000	~1250
<b>SANTA VACA 19/18 B3MD State Com 1H</b>	205' FSL & 1350' FWL, Sec 19, T19S, R35E	30-025-46803	[55610] SCHARB; BONE SPRING	~3000	~1250
<b>SANTA VACA 19/18 B3NC State Com 1H</b>	205' FSL & 1410' FWL, Sec 19, T19S, R35E	30-025-49155	[55610] SCHARB; BONE SPRING	~3000	~1250
<b>SANTA VACA 19/18 B3OB FEE 1H</b>	205' FSL & 1360' FEL, Sec 19, T19S, R35E	30-025-50242	[55610] SCHARB; BONE SPRING	~3000	~1250
<b>SANTA VACA 19/18 B3PA FEE 1H</b>	205' FSL & 1300' FEL, Sec 19, T19S, R35E	30-025-50326	[49553] PALMILLO; BONE SPRING, EAST	~3000	~1250

### Oil, Water, & Gas metering

The central tank battery in the SESW of Section 19, T19S, R35E, Lea County, New Mexico. The production for all eleven wells will come to its own separator. From the separator production will be allocated as follows:

#### Oil Metering:

Oil volumes from each well producing to the battery will be determined by using an allocation meter at the facility for each well. Oil from each separator will be metered and then sent to a heater treater (HT). Oil from the HT will then flow to a vapor recovery tower (VRT) and then to the 750 BBL oil tanks (OT). Oil production will be allocated on a daily basis based on the oil allocation meter downstream of the separator. This meter will be proven based on API, NMOCD and BLM specifications by tank testing. This process is performed by isolating a well to specific oil tanks and calibrating the meter based on the production numbers. The oil production from these wells listed above will be measured, commingled and then sold via truck haul or LACT.

#### Water Metering:

Water volumes from each well producing to the battery will be determined by using an allocation meter at the facility for each well. Water from each separator will be metered and sent to the 1000 BBL gun barrel (GB). From the GB the water will be sent to the 750 BBL water tanks (WT). Water production will be allocated on a daily basis based on the water allocation meter downstream of the separator. The water production from these wells listed above will be measured, commingled and disposed of via truck haul or pipelined to disposal.

#### Gas Metering:

Gas volumes from each well producing to this battery will be determined by using an allocation gas meter after the separator at the facility for each well. The gas production from each well listed above will be measured, commingled, and then sold off lease using the 24 hr. well test method. A Targa common gas sales meter #118001368 will be located off lease in the SESE of section 24, T19S, R34E. This meter is calibrated on a regular basis per API, NMOCD and BLM specifications.

### Economic Justification

Well Name	BOPD EST	Oil Gravity @ 60°	Value/bbl	MCFPD	Dry BTU @ 14.73 PSI	Value/MCF
SANTA VACA 19/18 B1MD State Com 1H	1500	48	\$82	~3000	~1250	\$8.30
SANTA VACA 19/18 B1NC State Com 1H	1500	48	\$82	~3000	~1250	\$8.30
SANTA VACA 19/18 B1OB FEE 1H	1500	48	\$82	~3000	~1250	\$8.30
SANTA VACA 19/18 B2MD State Com 1H	1500	48	\$82	~3000	~1250	\$8.30
SANTA VACA 19/18 B2NC State Com 1H	1500	48	\$82	~3000	~1250	\$8.30

<b>SANTA VACA 19/18 B2OB FEE 1H</b>	1500	48	\$82	~3000	~1250	\$8.30
<b>SANTA VACA 19/18 B2PA FEE 1H</b>	1500	48	\$82	~3000	~1250	\$8.30
<b>SANTA VACA 19/18 B3MD State Com 1H</b>	1500	48	\$82	~3000	~1250	\$8.30
<b>SANTA VACA 19/18 B3NC State Com 1H</b>	1500	48	\$82	~3000	~1250	\$8.30
<b>SANTA VACA 19/18 B3OB FEE 1H</b>	1500	48	\$82	~3000	~1250	\$8.30
<b>SANTA VACA 19/18 B3PA FEE 1H</b>	1500	48	\$82	~3000	~1250	\$8.30
	16,500	48	\$82	~33,000	1250	\$8.30

**Process and Flow Descriptions:**

The flow of production is shown in detail on the enclosed facility diagram and map which shows lease boundaries, wells, battery, & MM location. The commingling of production is in the interest of conservation and waste and will result in the most effective economic means of producing the reserves in place from the affected wells and will not result in reduced royalty or improper measurement of production.

Working, royalty, & overriding interest owners have been notified of the proposal via certified mail (see attached

Signed: Chad Cole

Printed Name: Chad Cole

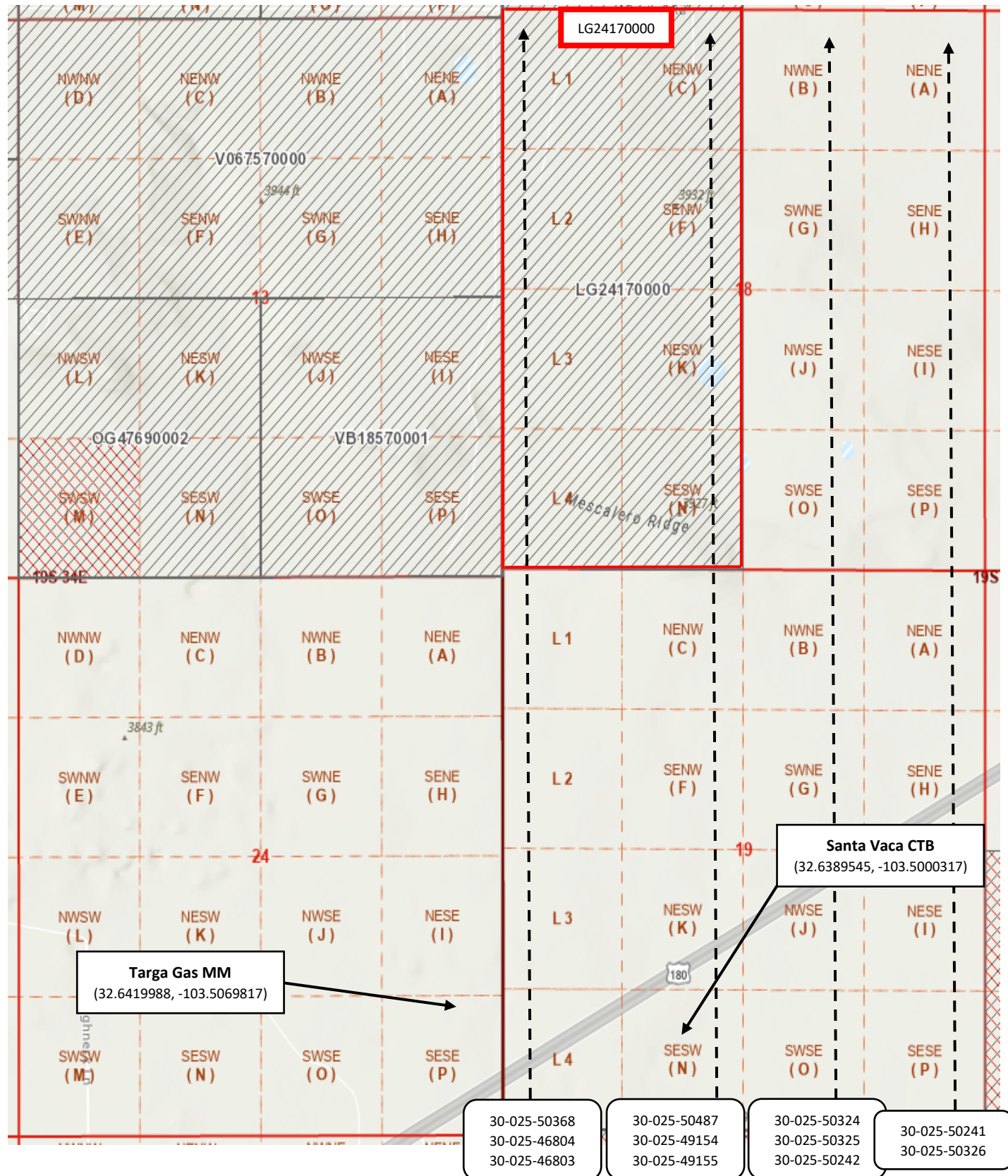
Title: Regulatory Specialist

Date: 9/19/2022





LEASE BOUNDARY MAP:





## SANTA VACA 19/18 COMMINGLE DISTRIBUTION LIST

OWNER NAME	ADDRESS 1	ADDRESS 2	ADDRESS 3	CITY	STATE	ZIP	CERTIFIED NUMBER
CHEVRON USA INC	JOINT INTEREST BILLING	SECTION 732S	P.O. BOX 2100	HOUSTON	Texas	77252-2100	9414 8368 9784 6863 8117 29
YATES ENERGY CORPORATION	P O BOX 2323			ROSWELL	New Mexico	88202-2323	8189 1968 9784 6863 8117 29
WORRALL INVESTMENT CORPORATION	P O BOX 1834			ROSWELL	New Mexico	88202-1834	8264 3368 9784 6863 8117 29
INNOVENTIONS INC	P O BOX 40			CEDAR CREST	New Mexico	87008	8548 8768 9784 6863 8117 29
SCOTT BROTHERS TRUST	HC 64 BOX 2012			CASTLE VALLEY	Utah	84532	8652 0368 9784 6863 8117 29
SEALY HUTCHINGS CAVIN INC	P O BOX 1125			ROSWELL	New Mexico	88202-1125	9414 8368 9784 6865 3956 61
HUTCHINGS OIL COMPANY	P O BOX 1216			ALBUQUERQUE	New Mexico	87103-1216	4082 8668 9784 6865 3956 61
YATES US INC	P O BOX 2323			ROSWELL	New Mexico	88201	4131 7468 9784 6865 3956 61
MOUTRAY PROPERTIES LLC	P O BOX 1598			CARLSBAD	New Mexico	88220	4266 3168 9784 6865 3956 61
NEW MEXICO STATE LAND OFFICE	ATTN: KENDA MONTOYA	310 OLD SANTA FE TRAIL		SANTA FE	New Mexico	87501	4354 2868 9784 6865 3956 61
OCCIDENTAL PERMIAN LTD	ATTN JOINT INTEREST	P O BOX 27570		HOUSTON	Texas	77227-7570	4464 3168 9784 6865 3956 61
CHEVRON USA INC	JOINT INTEREST BILLING	SECTION 732S	P.O. BOX 2100	HOUSTON	Texas	77252-2100	4544 0568 9784 6865 3956 61
YATES ENERGY CORPORATION	P O BOX 2323			ROSWELL	New Mexico	88202-2323	4608 8868 9784 6865 3956 61
JALAPENO CORPORATION	P O BOX 484			ALBUQUERQUE	New Mexico	87103-0484	6021 2768 9784 6865 3956 61
OCCIDENTAL PERMIAN LTD	ATTN JOINT INTEREST	P O BOX 27570		HOUSTON	Texas	77227-7570	6132 7768 9784 6865 3956 61
GERONIMO HOLDING CORPORATION	P O BOX 804			MIDLAND	Texas	79702-0804	6298 0368 9784 6865 3956 61
INNOVENTIONS INC	P O BOX 40			CEDAR CREST	New Mexico	87008	6558 6468 9784 6865 3956 61
WINN INVESTMENTS INC	C/O CAROLYN MADISON	302 W TILDEN		ROSWELL	New Mexico	88203	7099 8768 9784 6865 3956 61
SCOTT BROTHERS TRUST	HC 64 BOX 2012			CASTLE VALLEY	Utah	84532	7179 4768 9784 6865 3956 61
CL&F OPERATING LLC	111 VETERANS MEMORIAL BLVD, STE 500			METAIRIE	Texas	70005-3099	7329 7868 9784 6865 3956 61

District I  
1625 N. French Dr., Hobbs, NM 88240  
Phone: (575) 393-6161 Fax: (575) 393-0720  
District II  
811 S. First St., Artesia, NM 88210  
Phone: (575) 748-1283 Fax: (575) 748-9720  
District III  
1000 Rio Brazos Road, Aztec, NM 87410  
Phone: (505) 334-6178 Fax: (505) 334-6170  
District IV  
1220 S. St. Francis Dr., Santa Fe, NM 87505  
Phone: (505) 476-3460 Fax: (505) 476-3462

State of New Mexico  
Energy, Minerals & Natural Resources Department  
OIL CONSERVATION DIVISION  
1220 South St. Francis Dr.  
Santa Fe, NM 87505

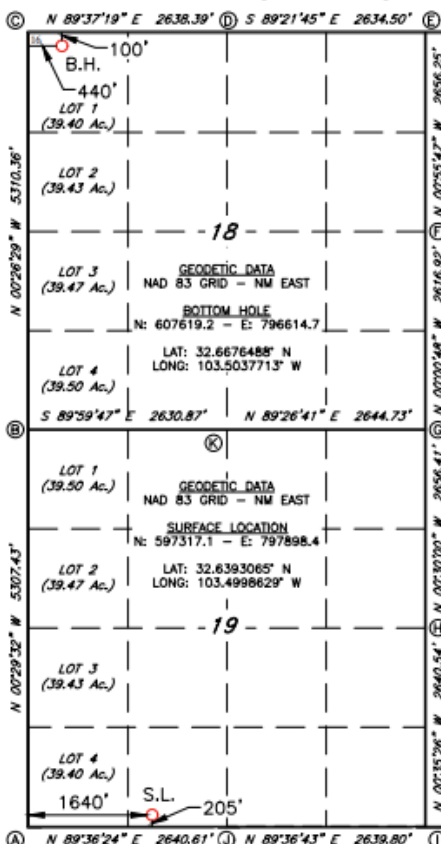
Form C-102  
Revised August 1, 2011  
Submit one copy to appropriate  
District Office

☐ AMENDED REPORT

WELL LOCATION AND ACREAGE DEDICATION PLAT

1 API Number		2 Pool Code		3 Pool Name		
4 Property Code		5 Property Name <b>SANTA VACA 19/18 B1MD STATE COM</b>			6 Well Number <b>1H</b>	
7 OGRID NO.		8 Operator Name <b>MEWBOURNE OIL COMPANY</b>			9 Elevation <b>3789'</b>	
10 Surface Location						
UL or lot no. <b>N</b>	Section <b>19</b>	Township <b>19S</b>	Range <b>35E</b>	Lot Idn <b>205</b>	Feet from the North/South line <b>SOUTH</b> Feet From the East/West line <b>1640</b> <b>WEST</b>	County <b>LEA</b>
11 Bottom Hole Location If Different From Surface						
UL or lot no. <b>1</b>	Section <b>18</b>	Township <b>19S</b>	Range <b>35E</b>	Lot Idn <b>100</b>	Feet from the North/South line <b>NORTH</b> Feet from the East/West line <b>440</b> <b>WEST</b>	County <b>LEA</b>
12 Dedicated Acres		13 Joint or Infill		14 Consolidation Code		15 Order No.

No allowable will be assigned to this completion until all interest have been consolidated or a non-standard unit has been approved by the division.



CORNER DATA  
NAD 83 GRID - NM EAST

A: FOUND 1/2" REBAR  
N: 597100.9 - E: 796260.5

B: FOUND BRASS CAP "1912"  
N: 602407.1 - E: 796215.0

C: FOUND NAIL  
N: 607716.3 - E: 796174.1

D: FOUND 1/2" REBAR  
N: 607733.7 - E: 796611.9

E: CALCULATED CORNER  
N: 607704.4 - E: 801445.7

F: FOUND 1/2" REBAR  
N: 605049.0 - E: 801488.8

G: FOUND LIMESTONE ROCK  
N: 602432.6 - E: 801489.4

H: FOUND 8"x4"x4" LIMESTONE ROCK  
N: 599776.8 - E: 801512.6

I: FOUND 5/8" REBAR  
N: 597136.9 - E: 801539.8

J: FOUND 1/2" REBAR  
N: 597119.0 - E: 798900.6

K: FOUND 12"x6"x4" LIMESTONE ROCK  
N: 602406.9 - E: 798845.3

17 OPERATOR CERTIFICATION

I hereby certify that the information contained herein is true and complete to the best of my knowledge and belief, and that this organization either owns a working interest or unleased mineral interest in the land including the proposed bottom hole location or has a right to drill this well at this location pursuant to a contract with an owner of such a mineral or working interest, or to a voluntary pooling agreement or a compulsory pooling order heretofore entered by the division.

Signature \_\_\_\_\_ Date \_\_\_\_\_

Printed Name \_\_\_\_\_

E-mail Address \_\_\_\_\_

18 SURVEYOR CERTIFICATION

I hereby certify that the well location shown on this plat was plotted from field notes of actual surveys made by me or under my supervision, and that the same is true and correct to the best of my belief.

**06/08/2022**

Date of Survey

Signature and Seal of Professional Surveyor

Certificate Number

Job No: LS2112177R

District I  
1625 N. French Dr., Hobbs, NM 88240  
Phone: (575) 393-6161 Fax: (575) 393-0720  
District II  
811 S. First St., Artesia, NM 88210  
Phone: (575) 748-1283 Fax: (575) 748-9720  
District III  
1000 Rio Brazos Road, Aztec, NM 87410  
Phone: (505) 334-6178 Fax: (505) 334-6170  
District IV  
1220 S. St. Francis Dr., Santa Fe, NM 87505  
Phone: (505) 476-3460 Fax: (505) 476-3462

State of New Mexico  
Energy, Minerals & Natural Resources Department  
**OIL CONSERVATION DIVISION**  
1220 South St. Francis Dr.  
Santa Fe, NM 87505

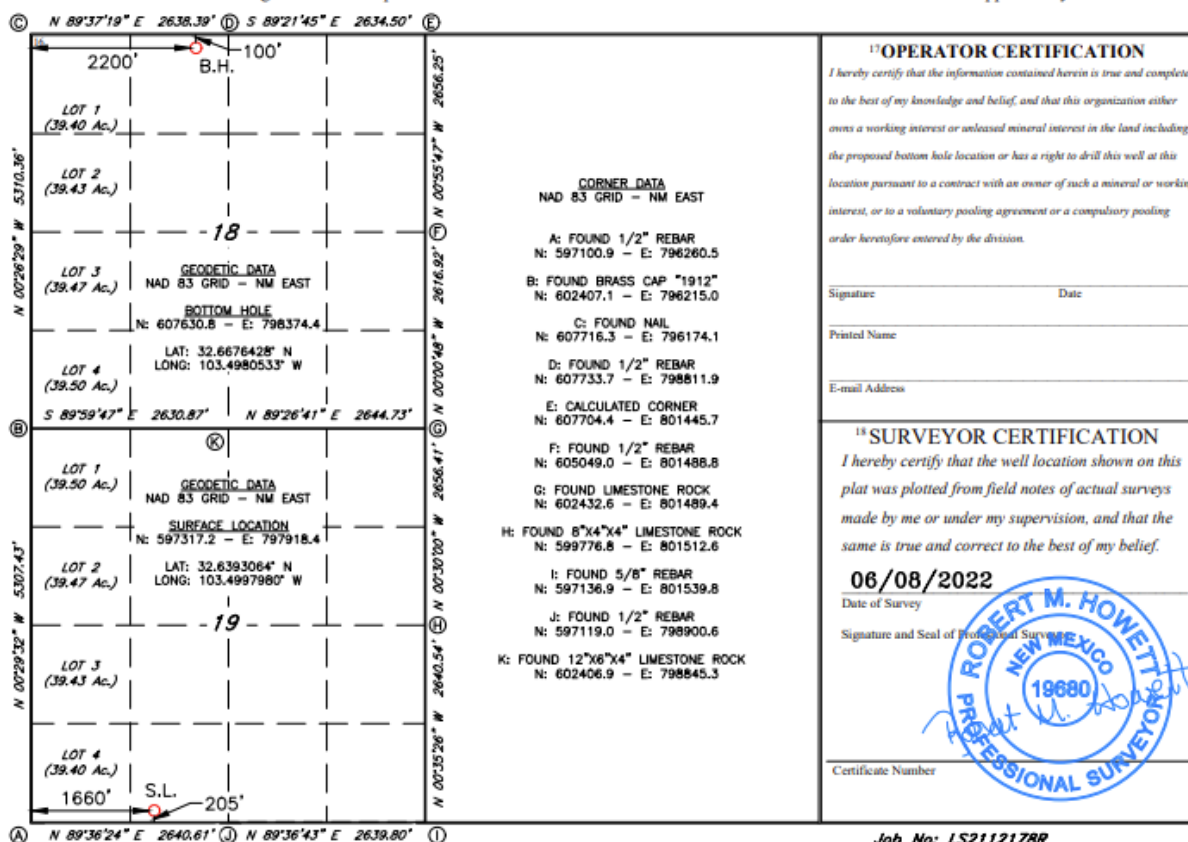
Form C-102  
Revised August 1, 2011  
Submit one copy to appropriate  
District Office

☐ AMENDED REPORT

**WELL LOCATION AND ACREAGE DEDICATION PLAT**

1 API Number		2 Pool Code		3 Pool Name	
4 Property Code		5 Property Name <b>SANTA VACA 19/18 B1NC STATE COM</b>			
7 OGRID NO.		6 Well Number <b>1H</b>			
		8 Operator Name <b>MEWBOURNE OIL COMPANY</b>			
		9 Elevation <b>3789'</b>			
10 Surface Location					
UL or lot no. <b>N</b>	Section <b>19</b>	Township <b>19S</b>	Range <b>35E</b>	Lot Idn <b>205</b>	Feet from the <b>SOUTH</b>
					Feet From the <b>1660</b>
					East/West line <b>WEST</b>
					County <b>LEA</b>
11 Bottom Hole Location If Different From Surface					
UL or lot no. <b>C</b>	Section <b>18</b>	Township <b>19S</b>	Range <b>35E</b>	Lot Idn <b>100</b>	Feet from the <b>NORTH</b>
					Feet from the <b>2200</b>
					East/West line <b>WEST</b>
					County <b>LEA</b>
12 Dedicated Acres		13 Joint or Infill		14 Consolidation Code	
				15 Order No.	

No allowable will be assigned to this completion until all interest have been consolidated or a non-standard unit has been approved by the division.





District I  
1623 N. French Dr., Hobbs, NM 88240  
Phone: (575) 393-6161 Fax: (575) 393-0720  
District II  
811 S. First St., Artesia, NM 88210  
Phone: (575) 748-1283 Fax: (575) 748-9720  
District III  
1000 Rio Brazos Road, Aztec, NM 87410  
Phone: (505) 334-6178 Fax: (505) 334-6170  
District IV  
1220 S. St. Francis Dr., Santa Fe, NM 87505  
Phone: (505) 476-3460 Fax: (505) 476-3462

State of New Mexico  
Energy, Minerals & Natural Resources Department  
OIL CONSERVATION DIVISION  
1220 South St. Francis Dr.  
Santa Fe, NM 87505

Form C-102  
Revised August 1, 2011  
Submit one copy to appropriate  
District Office

☐ AMENDED REPORT

WELL LOCATION AND ACREAGE DEDICATION PLAT

1 API Number		2 Pool Code		3 Pool Name					
4 Property Code		5 Property Name <b>SANTA VACA 19/18 B10B FEE</b>						6 Well Number <b>1H</b>	
7 OGRID NO.		8 Operator Name <b>MEWBOURNE OIL COMPANY</b>						9 Elevation <b>3793'</b>	
10 Surface Location									
UL or lot no. <b>0</b>	Section <b>19</b>	Township <b>19S</b>	Range <b>35E</b>	Lot Idn	Feet from the <b>205</b>	North/South line <b>SOUTH</b>	Feet From the <b>1320</b>	East/West line <b>EAST</b>	County <b>LEA</b>
11 Bottom Hole Location If Different From Surface									
UL or lot no. <b>B</b>	Section <b>18</b>	Township <b>19S</b>	Range <b>35E</b>	Lot Idn	Feet from the <b>100</b>	North/South line <b>NORTH</b>	Feet from the <b>1350</b>	East/West line <b>EAST</b>	County <b>LEA</b>
12 Dedicated Acres		13 Joint or Infill		14 Consolidation Code		15 Order No.			

No allowable will be assigned to this completion until all interest have been consolidated or a non-standard unit has been approved by the division.

	<p><b>17 OPERATOR CERTIFICATION</b> I hereby certify that the information contained herein is true and complete to the best of my knowledge and belief, and that this organization either owns a working interest or unleased mineral interest in the land including the proposed bottom hole location or has a right to drill this well at this location pursuant to a contract with an owner of such a mineral or working interest, or to a voluntary pooling agreement or a compulsory pooling order heretofore entered by the division.</p> <p>Signature _____ Date _____</p> <p>Printed Name _____</p> <p>E-mail Address _____</p>
	<p><b>18 SURVEYOR CERTIFICATION</b> I hereby certify that the well location shown on this plat was plotted from field notes of actual surveys made by me or under my supervision, and that the same is true and correct to the best of my belief.</p> <p><b>12/09/2021</b> Date of Survey</p> <p>Signature and Seal of Professional Surveyor _____</p> <p><b>19680</b> Certificate Number</p>

Job No: LS22060706

District I  
1625 N. French Dr., Hobbs, NM 88240  
Phone: (575) 393-6161 Fax: (575) 393-0720  
District II  
811 S. First St., Artesia, NM 88210  
Phone: (575) 748-1283 Fax: (575) 748-9720  
District III  
1000 Rio Brazos Road, Aztec, NM 87410  
Phone: (505) 334-6178 Fax: (505) 334-6170  
District IV  
1220 S. St. Francis Dr., Santa Fe, NM 87505  
Phone: (505) 476-3460 Fax: (505) 476-3462

State of New Mexico  
Energy, Minerals & Natural Resources Division  
OIL CONSERVATION DIVISION  
1220 South St. Francis Dr.  
Santa Fe, NM 87505

Form C-102  
Revised August 1, 2011  
Submit one copy to appropriate  
District Office

☐ AMENDED REPORT

WELL LOCATION AND ACREAGE DEDICATION PLAT

1 API Number		2 Pool Code		3 Pool Name					
4 Property Code		5 Property Name <b>SANTA VACA 19/18 B2MD STATE COM</b>						6 Well Number <b>1H</b>	
7 OGRID NO.		8 Operator Name <b>MEWBOURNE OIL COMPANY</b>						9 Elevation <b>3788'</b>	
10 Surface Location									
UL or lot no.	Section	Township	Range	Lot Idn	Feet from the	North/South line	Feet From the	East/West line	County
<b>N</b>	<b>19</b>	<b>19S</b>	<b>35E</b>		<b>205</b>	<b>SOUTH</b>	<b>1380</b>	<b>WEST</b>	<b>LEA</b>
11 Bottom Hole Location If Different From Surface									
UL or lot no.	Section	Township	Range	Lot Idn	Feet from the	North/South line	Feet from the	East/West line	County
<b>1</b>	<b>18</b>	<b>19S</b>	<b>35E</b>		<b>100</b>	<b>NORTH</b>	<b>500</b>	<b>WEST</b>	<b>LEA</b>
12 Dedicated Acres		13 Joint or Infill		14 Consolidation Code		15 Order No.			

No allowable will be assigned to this completion until all interest have been consolidated or a non-standard unit has been approved by the division.

① N 89°37'19" E 2638.39' ② S 89°21'45" E 2634.50' ③

④ N 89°36'24" E 2640.61' ⑤ N 89°36'43" E 2639.80' ⑥

**17 OPERATOR CERTIFICATION**  
I hereby certify that the information contained herein is true and complete to the best of my knowledge and belief, and that this organization either owns a working interest or unleased mineral interest in the land including the proposed bottom hole location or has a right to drill this well at this location pursuant to a contract with an owner of such a mineral or working interest, or to a voluntary pooling agreement or a compulsory pooling order heretofore entered by the division.

Signature \_\_\_\_\_ Date \_\_\_\_\_

Printed Name \_\_\_\_\_

E-mail Address \_\_\_\_\_

**18 SURVEYOR CERTIFICATION**  
I hereby certify that the well location shown on this plat was plotted from field notes of actual surveys made by me or under my supervision, and that the same is true and correct to the best of my belief.

**05-21-2021**  
Date of Survey

Signature and Seal of Professional Surveyor \_\_\_\_\_

Certificate Number \_\_\_\_\_

**Job No: LS21020105**



District I  
1625 N. French Dr., Hobbs, NM 88240  
Phone: (575) 393-6161 Fax: (575) 393-0720  
District II  
811 S. First St., Artesia, NM 88210  
Phone: (575) 748-1283 Fax: (575) 748-9720  
District III  
1000 Rio Brazos Road, Aztec, NM 87410  
Phone: (505) 334-6178 Fax: (505) 334-6170  
District IV  
1220 S. St. Francis Dr., Santa Fe, NM 87505  
Phone: (505) 476-3460 Fax: (505) 476-3462

State of New Mexico  
Energy, Minerals & Natural Resources Department  
**OIL CONSERVATION DIVISION**  
1220 South St. Francis Dr.  
Santa Fe, NM 87505

Form C-102  
Revised August 1, 2011  
Submit one copy to appropriate  
District Office

☐ AMENDED REPORT

**WELL LOCATION AND ACREAGE DEDICATION PLAT**

<sup>1</sup> API Number	<sup>2</sup> Pool Code	<sup>3</sup> Pool Name
<sup>4</sup> Property Code	<sup>5</sup> Property Name <b>SANTA VACA 19/18 B2NC STATE COM</b>	<sup>6</sup> Well Number <b>1H</b>
<sup>7</sup> OGRID NO.	<sup>8</sup> Operator Name <b>MEWBOURNE OIL COMPANY</b>	<sup>9</sup> Elevation <b>3788'</b>

<sup>10</sup> Surface Location

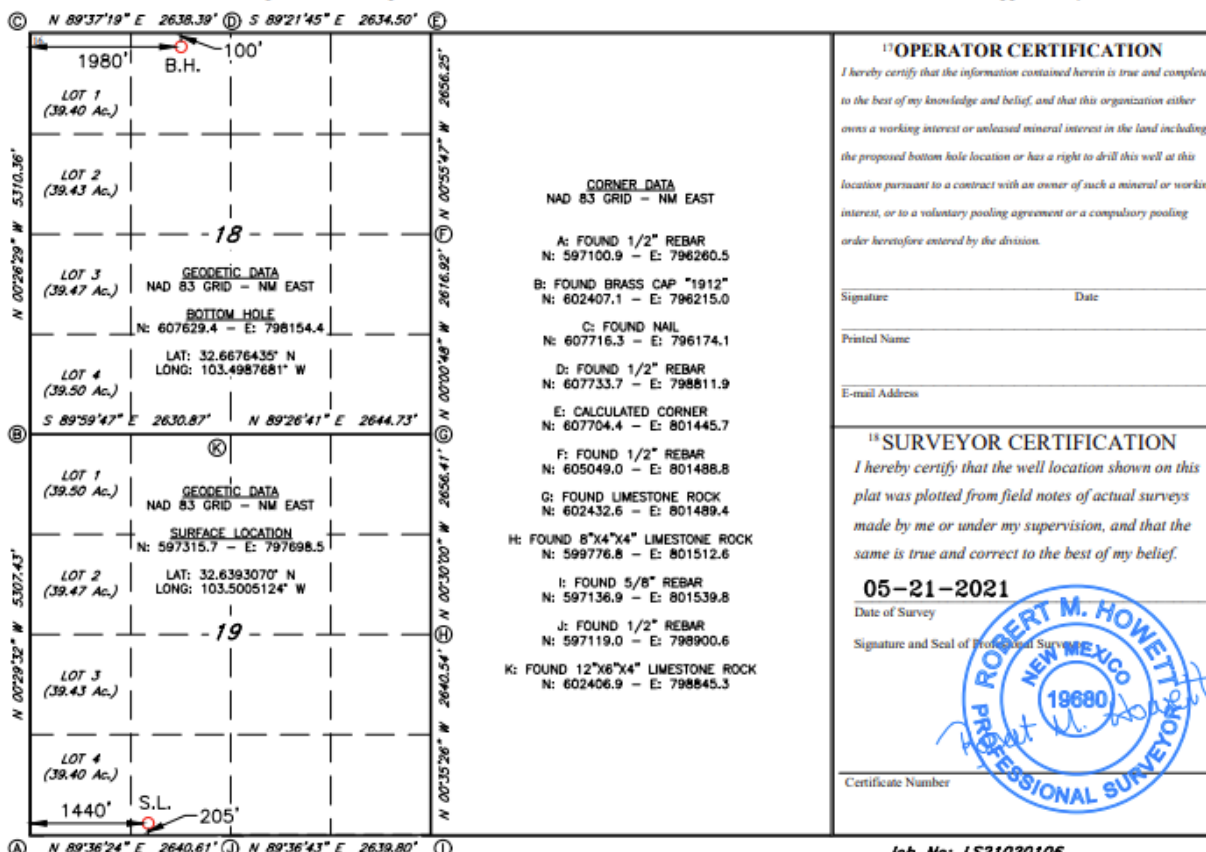
UL or lot no.	Section	Township	Range	Lot Idn	Feet from the	North/South line	Feet From the	East/West line	County
<b>N</b>	<b>19</b>	<b>19S</b>	<b>35E</b>		<b>205</b>	<b>SOUTH</b>	<b>1440</b>	<b>WEST</b>	<b>LEA</b>

<sup>11</sup> Bottom Hole Location If Different From Surface

UL or lot no.	Section	Township	Range	Lot Idn	Feet from the	North/South line	Feet from the	East/West line	County
<b>C</b>	<b>18</b>	<b>19S</b>	<b>35E</b>		<b>100</b>	<b>NORTH</b>	<b>1980</b>	<b>WEST</b>	<b>LEA</b>

<sup>12</sup> Dedicated Acres	<sup>13</sup> Joint or Infill	<sup>14</sup> Consolidation Code	<sup>15</sup> Order No.

No allowable will be assigned to this completion until all interest have been consolidated or a non-standard unit has been approved by the division.



Job No: LS21020106

District I  
1625 N. French Dr., Hobbs, NM 88240  
Phone: (575) 393-6161 Fax: (575) 393-0720  
District II  
811 S. First St., Artesia, NM 88210  
Phone: (575) 748-1283 Fax: (575) 748-9720  
District III  
1000 Rio Brazos Road, Aztec, NM 87410  
Phone: (505) 334-6178 Fax: (505) 334-6170  
District IV  
1220 S. St. Francis Dr., Santa Fe, NM 87505  
Phone: (505) 476-3460 Fax: (505) 476-3462

State of New Mexico  
Energy, Minerals & Natural Resources Department  
OIL CONSERVATION DIVISION  
1220 South St. Francis Dr.  
Santa Fe, NM 87505

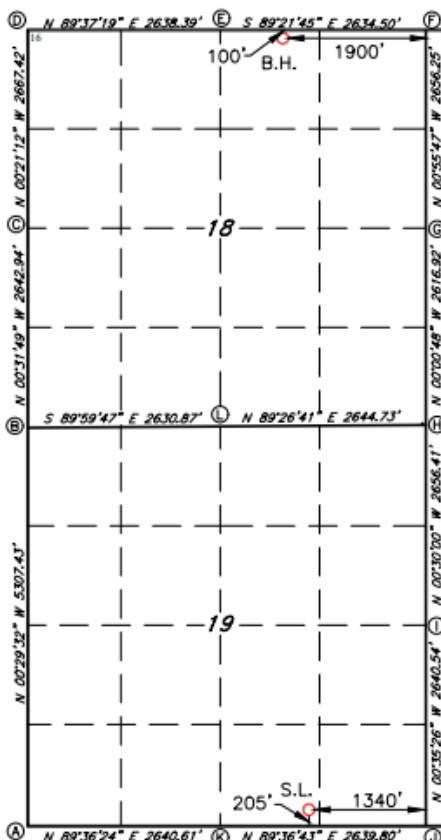
Form C-102  
Revised August 1, 2011  
Submit one copy to appropriate  
District Office

☐ AMENDED REPORT

WELL LOCATION AND ACREAGE DEDICATION PLAT

1 API Number		2 Pool Code		3 Pool Name					
4 Property Code		5 Property Name <b>SANTA VACA 19/18 B20B FEE</b>						6 Well Number <b>1H</b>	
7 OGRID NO.		8 Operator Name <b>MEWBOURNE OIL COMPANY</b>						9 Elevation <b>3793'</b>	
10 Surface Location									
UL or lot no. <b>0</b>	Section <b>19</b>	Township <b>19S</b>	Range <b>35E</b>	Lot Idn	Feet from the <b>205</b>	North/South line <b>SOUTH</b>	Feet From the <b>1340</b>	East/West line <b>EAST</b>	County <b>LEA</b>
11 Bottom Hole Location If Different From Surface									
UL or lot no. <b>B</b>	Section <b>18</b>	Township <b>19S</b>	Range <b>35E</b>	Lot Idn	Feet from the <b>100</b>	North/South line <b>NORTH</b>	Feet from the <b>1900</b>	East/West line <b>EAST</b>	County <b>LEA</b>
12 Dedicated Acres		13 Joint or Infill		14 Consolidation Code		15 Order No.			

No allowable will be assigned to this completion until all interest have been consolidated or a non-standard unit has been approved by the division.



GEODETIC DATA  
NAD 83 GRID - NM EAST  
SURFACE LOCATION  
N: 597332.7 - E: 800198.0  
LAT: 32.6392996° N  
LONG: 103.4923928° W  
BOTTOM HOLE  
N: 607625.6 - E: 799547.8  
LAT: 32.6676029° N  
LONG: 103.4942405° W  
CORNER DATA  
NAD 83 GRID - NM EAST  
A: FOUND 1/2" REBAR  
N: 597100.9 - E: 796260.5  
B: FOUND BRASS CAP "1912"  
N: 602407.1 - E: 796215.0  
C: FOUND NAIL  
N: 605049.4 - E: 796190.5  
D: FOUND NAIL  
N: 607716.3 - E: 796174.1  
E: FOUND 1/2" REBAR  
N: 607733.7 - E: 798811.9  
F: CALCULATED CORNER  
N: 607704.4 - E: 801445.7  
G: FOUND 1/2" REBAR  
N: 605049.0 - E: 801488.8  
H: FOUND LIMESTONE ROCK  
N: 602432.6 - E: 801489.4  
I: FOUND 8"x4"x4" LIMESTONE ROCK  
N: 599776.8 - E: 801512.6  
J: FOUND 5/8" REBAR  
N: 597136.9 - E: 801539.8  
K: FOUND 1/2" REBAR  
N: 597119.0 - E: 798900.6  
L: FOUND 12"x6"x4" LIMESTONE ROCK  
N: 602406.9 - E: 798845.3

17 OPERATOR CERTIFICATION

I hereby certify that the information contained herein is true and complete to the best of my knowledge and belief, and that this organization either owns a working interest or unleased mineral interest in the land including the proposed bottom hole location or has a right to drill this well at this location pursuant to a contract with an owner of such a mineral or working interest, or to a voluntary pooling agreement or a compulsory pooling order heretofore entered by the division.

Signature \_\_\_\_\_ Date \_\_\_\_\_

Printed Name \_\_\_\_\_

E-mail Address \_\_\_\_\_

18 SURVEYOR CERTIFICATION

I hereby certify that the well location shown on this plat was plotted from field notes of actual surveys made by me or under my supervision, and that the same is true and correct to the best of my belief.

12/09/2021

Date of Survey

Signature and Seal of Professional Surveyor

19680

Certificate Number

REV: SL MOVE 06/08/22

Job No: LS21121272R

District I  
1625 N. French Dr., Hobbs, NM 88240  
Phone: (575) 393-6161 Fax: (575) 393-0720  
District II  
811 S. First St., Artesia, NM 88210  
Phone: (575) 748-1283 Fax: (575) 748-9720  
District III  
1000 Rio Brazos Road, Aztec, NM 87410  
Phone: (505) 334-6178 Fax: (505) 334-6170  
District IV  
1220 S. St. Francis Dr., Santa Fe, NM 87505  
Phone: (505) 476-3460 Fax: (505) 476-3462

State of New Mexico  
Energy, Minerals & Natural Resources Department  
**OIL CONSERVATION DIVISION**  
1220 South St. Francis Dr.  
Santa Fe, NM 87505

Form C-102  
Revised August 1, 2011  
Submit one copy to appropriate  
District Office

☐ AMENDED REPORT

**WELL LOCATION AND ACREAGE DEDICATION PLAT**

1 API Number		2 Pool Code		3 Pool Name					
4 Property Code		5 Property Name <b>SANTA VACA 19/18 B2PA FEE</b>						6 Well Number <b>1H</b>	
7 OGRID NO.		8 Operator Name <b>MEWBOURNE OIL COMPANY</b>						9 Elevation <b>3793'</b>	
10 Surface Location									
UL or lot no. <b>P</b>	Section <b>19</b>	Township <b>19S</b>	Range <b>35E</b>	Lot Idn	Feet from the <b>205</b>	North/South line <b>SOUTH</b>	Feet From the <b>1280</b>	East/West line <b>EAST</b>	County <b>LEA</b>
11 Bottom Hole Location If Different From Surface									
UL or lot no. <b>A</b>	Section <b>18</b>	Township <b>19S</b>	Range <b>35E</b>	Lot Idn	Feet from the <b>100</b>	North/South line <b>NORTH</b>	Feet from the <b>500</b>	East/West line <b>EAST</b>	County <b>LEA</b>
12 Dedicated Acres		13 Joint or Infill		14 Consolidation Code		15 Order No.			

No allowable will be assigned to this completion until all interest have been consolidated or a non-standard unit has been approved by the division.

	<p><b>GEODETIC DATA</b> NAD 83 GRID - NM EAST <b>SURFACE LOCATION</b> N: 597333.2 - E: 800258.0 LAT: 32.6392994° N LONG: 103.4921979° W <b>BOTTOM HOLE</b> N: 607610.0 - E: 800947.5 LAT: 32.6675296° N LONG: 103.4896929° W <b>CORNER DATA</b> NAD 83 GRID - NM EAST A: FOUND 1/2" REBAR N: 597100.9 - E: 796260.5 B: FOUND BRASS CAP "1912" N: 602407.1 - E: 796215.0 C: FOUND NAIL N: 605049.4 - E: 796190.5 D: FOUND NAIL N: 607716.3 - E: 796174.1 E: FOUND 1/2" REBAR N: 607733.7 - E: 798811.9 F: CALCULATED CORNER N: 607704.4 - E: 801445.7 G: FOUND 1/2" REBAR N: 605049.0 - E: 801488.8 H: FOUND LIMESTONE ROCK N: 602432.6 - E: 801489.4 I: FOUND 8"x4"x4" LIMESTONE ROCK N: 599776.8 - E: 801512.6 J: FOUND 5/8" REBAR N: 597136.9 - E: 801539.8 K: FOUND 1/2" REBAR N: 597119.0 - E: 798900.6 L: FOUND 12"x6"x4" LIMESTONE ROCK N: 602406.9 - E: 798845.3</p>	<p><b>17 OPERATOR CERTIFICATION</b> I hereby certify that the information contained herein is true and complete to the best of my knowledge and belief, and that this organization either owns a working interest or undivided mineral interest in the land including the proposed bottom hole location or has a right to drill this well at this location pursuant to a contract with an owner of such a mineral or working interest, or to a voluntary pooling agreement or a compulsory pooling order heretofore entered by the division.</p> <p>Signature _____ Date _____ Printed Name _____ E-mail Address _____</p>
	<p><b>18 SURVEYOR CERTIFICATION</b> I hereby certify that the well location shown on this plat was plotted from field notes of actual surveys made by me or under my supervision, and that the same is true and correct to the best of my belief.</p> <p><b>12/09/2021</b> Date of Survey Signature and Seal of Professional Surveyor <b>19680</b> Certificate Number REV: SL MOVE 06/08/22</p>	

Job No: LS21121274R

District I  
1625 N. French Dr., Hobbs, NM 88240  
Phone: (575) 393-6161 Fax: (575) 393-0720  
District II  
811 S. First St., Artesia, NM 88210  
Phone: (575) 748-1283 Fax: (575) 748-9720  
District III  
1000 Rio Brazos Road, Aztec, NM 87410  
Phone: (505) 334-6178 Fax: (505) 334-6170  
District IV  
1220 S. St. Francis Dr., Santa Fe, NM 87505  
Phone: (505) 476-3460 Fax: (505) 476-3462

State of New Mexico  
Energy, Minerals & Natural Resources Department  
OIL CONSERVATION DIVISION  
1220 South St. Francis Dr.  
Santa Fe, NM 87505

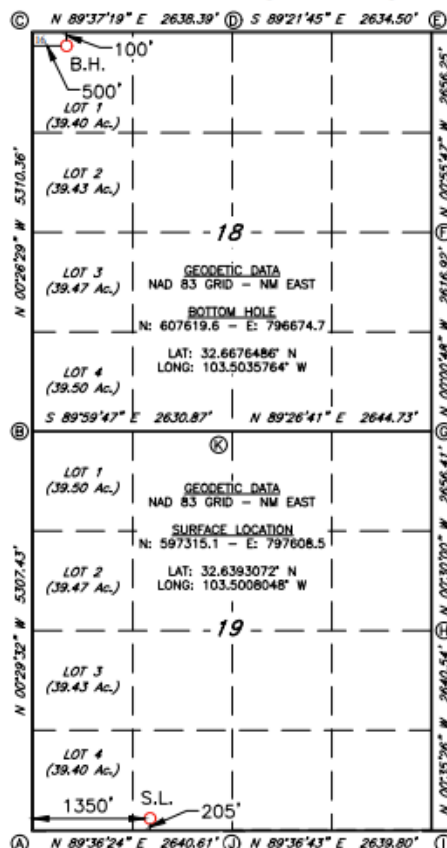
Form C-102  
Revised August 1, 2011  
Submit one copy to appropriate  
District Office

☐ AMENDED REPORT

WELL LOCATION AND ACREAGE DEDICATION PLAT

1 API Number		2 Pool Code		3 Pool Name	
4 Property Code		5 Property Name <b>SANTA VACA 19/18 B3MD STATE COM</b>			6 Well Number <b>1H</b>
7 OGRID NO.		8 Operator Name <b>MEWBOURNE OIL COMPANY</b>			9 Elevation <b>3788'</b>
10 Surface Location					
UL or lot no.	Section	Township	Range	Lot Idn	Feet from the North/South line
<b>N</b>	<b>19</b>	<b>19S</b>	<b>35E</b>		<b>205</b>
				Feet From the	East/West line
				<b>1350</b>	<b>WEST</b>
				County <b>LEA</b>	
11 Bottom Hole Location If Different From Surface					
UL or lot no.	Section	Township	Range	Lot Idn	Feet from the North/South line
<b>1</b>	<b>18</b>	<b>19S</b>	<b>35E</b>		<b>100</b>
				Feet from the	East/West line
				<b>500</b>	<b>WEST</b>
				County <b>LEA</b>	
12 Dedicated Acres	13 Joint or Infill	14 Consolidation Code		15 Order No.	

No allowable will be assigned to this completion until all interest have been consolidated or a non-standard unit has been approved by the division.



CORNER DATA  
NAD 83 GRID - NM EAST

A: FOUND 1/2" REBAR  
N: 597100.9 - E: 796260.5

B: FOUND BRASS CAP "1912"  
N: 602407.1 - E: 796215.0

C: FOUND NAIL  
N: 607716.3 - E: 796174.1

D: FOUND 1/2" REBAR  
N: 607733.7 - E: 798811.9

E: CALCULATED CORNER  
N: 607704.4 - E: 801445.7

F: FOUND 1/2" REBAR  
N: 605049.0 - E: 801488.8

G: FOUND LIMESTONE ROCK  
N: 602432.6 - E: 801489.4

H: FOUND 8"x4"x4" LIMESTONE ROCK  
N: 599776.8 - E: 801512.6

I: FOUND 5/8" REBAR  
N: 597136.9 - E: 801539.8

J: FOUND 1/2" REBAR  
N: 597119.0 - E: 798900.6

K: FOUND 12"x6"x4" LIMESTONE ROCK  
N: 602406.9 - E: 798845.3

17 OPERATOR CERTIFICATION

I hereby certify that the information contained herein is true and complete to the best of my knowledge and belief, and that this organization either owns a working interest or an undivided mineral interest in the land including the proposed bottom hole location or has a right to drill this well at this location pursuant to a contract with an owner of such a mineral or working interest, or to a voluntary pooling agreement or a compulsory pooling order heretofore entered by the division.

Signature \_\_\_\_\_ Date \_\_\_\_\_

Printed Name \_\_\_\_\_

E-mail Address \_\_\_\_\_

18 SURVEYOR CERTIFICATION

I hereby certify that the well location shown on this plat was plotted from field notes of actual surveys made by me or under my supervision, and that the same is true and correct to the best of my belief.

**05-21-2021**

Date of Survey

Signature and Seal of Professional Surveyor

Certificate Number

Job No: LS21050528



District I  
1625 N. French Dr., Hobbs, NM 88240  
Phone: (575) 393-6161 Fax: (575) 393-0720  
District II  
811 S. First St., Artesia, NM 88210  
Phone: (575) 748-1283 Fax: (575) 748-9720  
District III  
1000 Rio Brazos Road, Aztec, NM 87410  
Phone: (505) 334-6178 Fax: (505) 334-6170  
District IV  
1220 S. St. Francis Dr., Santa Fe, NM 87505  
Phone: (505) 476-3460 Fax: (505) 476-3462

State of New Mexico  
Energy, Minerals & Natural Resources Department  
OIL CONSERVATION DIVISION  
1220 South St. Francis Dr.  
Santa Fe, NM 87505

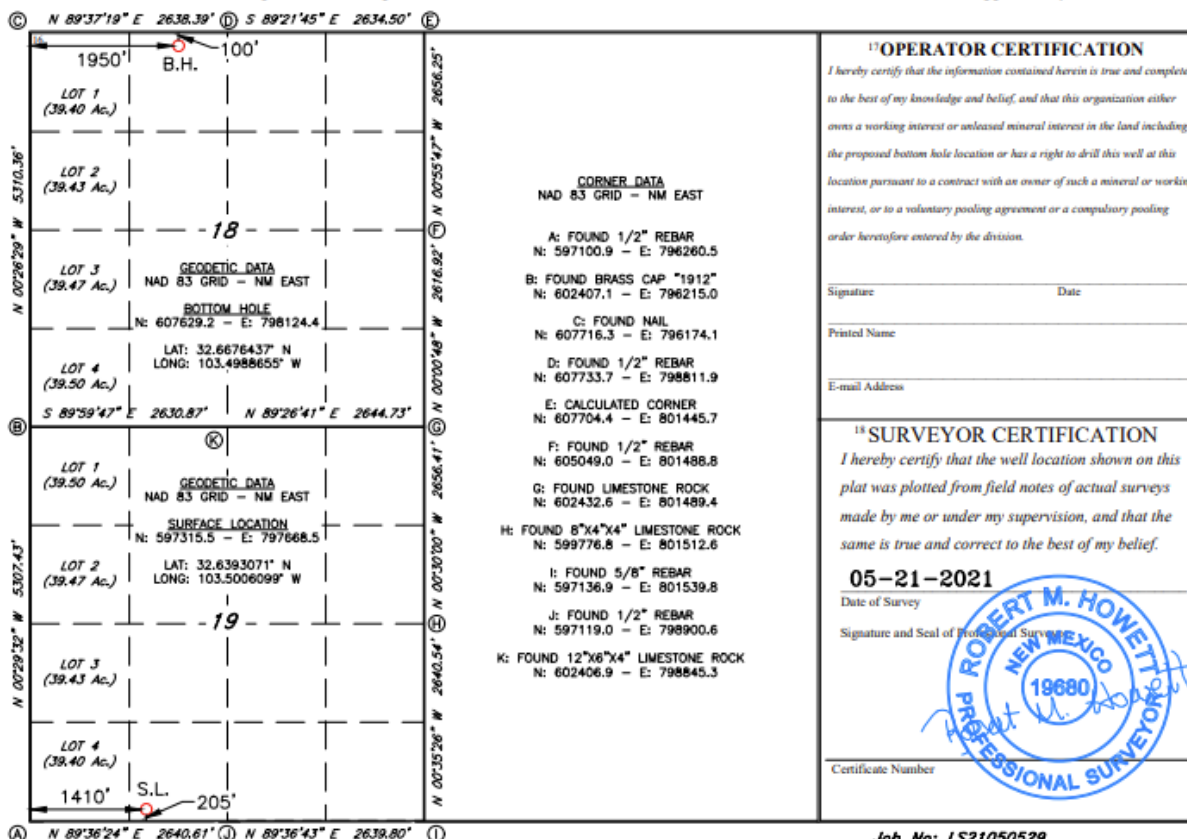
Form C-102  
Revised August 1, 2011  
Submit one copy to appropriate  
District Office

☐ AMENDED REPORT

WELL LOCATION AND ACREAGE DEDICATION PLAT

1 API Number		2 Pool Code		3 Pool Name	
4 Property Code		5 Property Name <b>SANTA VACA 19/18 B3NC STATE COM</b>			
6 Well Number <b>1H</b>		7 OGRID NO.			
8 Operator Name <b>MEWBOURNE OIL COMPANY</b>				9 Elevation <b>3787'</b>	
10 Surface Location					
UL or lot no. <b>N</b>	Section <b>19</b>	Township <b>19S</b>	Range <b>35E</b>	Lot Idn	Feet from the North/South line <b>205</b>
				Feet From the East/West line <b>1410</b>	County <b>WEST</b>
11 Bottom Hole Location If Different From Surface					
UL or lot no. <b>C</b>	Section <b>18</b>	Township <b>19S</b>	Range <b>35E</b>	Lot Idn	Feet from the North/South line <b>100</b>
				Feet from the East/West line <b>1950</b>	County <b>WEST</b>
12 Dedicated Acres		13 Joint or Infill		14 Consolidation Code	
				15 Order No.	

No allowable will be assigned to this completion until all interest have been consolidated or a non-standard unit has been approved by the division.



District I  
1625 N. French Dr., Hobbs, NM 88240  
Phone: (575) 393-6161 Fax: (575) 393-0720  
District II  
811 S. First St., Artesia, NM 88210  
Phone: (575) 748-1283 Fax: (575) 748-9720  
District III  
1000 Rio Brazos Road, Aztec, NM 87410  
Phone: (505) 334-6178 Fax: (505) 334-6170  
District IV  
1220 S. St. Francis Dr., Santa Fe, NM 87505  
Phone: (505) 476-3460 Fax: (505) 476-3462

State of New Mexico  
Energy, Minerals & Natural Resources Department  
OIL CONSERVATION DIVISION  
1220 South St. Francis Dr.  
Santa Fe, NM 87505

Form C-102  
Revised August 1, 2011  
Submit one copy to appropriate  
District Office

☐ AMENDED REPORT

WELL LOCATION AND ACREAGE DEDICATION PLAT

1 API Number		2 Pool Code		3 Pool Name					
4 Property Code		5 Property Name <b>SANTA VACA 19/18 B30B FEE</b>						6 Well Number <b>1H</b>	
7 OGRID NO.		8 Operator Name <b>MEWBOURNE OIL COMPANY</b>						9 Elevation <b>3793'</b>	
10 Surface Location									
UL or lot no. <b>0</b>	Section <b>19</b>	Township <b>19S</b>	Range <b>35E</b>	Lot Idn	Feet from the <b>205</b>	North/South line <b>SOUTH</b>	Feet From the <b>1360</b>	East/West line <b>EAST</b>	County <b>LEA</b>
11 Bottom Hole Location If Different From Surface									
UL or lot no. <b>B</b>	Section <b>18</b>	Township <b>19S</b>	Range <b>35E</b>	Lot Idn	Feet from the <b>100</b>	North/South line <b>NORTH</b>	Feet from the <b>1980</b>	East/West line <b>EAST</b>	County <b>LEA</b>
12 Dedicated Acres		13 Joint or Infill		14 Consolidation Code		15 Order No.			

No allowable will be assigned to this completion until all interest have been consolidated or a non-standard unit has been approved by the division.

	<p><b>GEODETIC DATA</b> NAD 83 GRID - NM EAST</p> <p><b>SURFACE LOCATION</b> N: 597332.6 - E: 800178.0 LAT: 32.6392998° N LONG: 103.4924577° W</p> <p><b>BOTTOM HOLE</b> N: 607626.5 - E: 799467.9 LAT: 32.6676070° N LONG: 103.4945003° W</p> <p><b>CORNER DATA</b> NAD 83 GRID - NM EAST</p> <p>A: FOUND 1/2" REBAR N: 597100.9 - E: 796260.5</p> <p>B: FOUND BRASS CAP *1912* N: 602407.1 - E: 796215.0</p> <p>C: FOUND NAIL N: 605049.4 - E: 796190.5</p> <p>D: FOUND NAIL N: 607716.3 - E: 796174.1</p> <p>E: FOUND 1/2" REBAR N: 607733.7 - E: 798811.9</p> <p>F: CALCULATED CORNER N: 607704.4 - E: 801445.7</p> <p>G: FOUND 1/2" REBAR N: 605049.0 - E: 801488.8</p> <p>H: FOUND LIMESTONE ROCK N: 602432.6 - E: 801489.4</p> <p>I: FOUND 8"x4"x4" LIMESTONE ROCK N: 599776.8 - E: 801512.6</p> <p>J: FOUND 5/8" REBAR N: 597136.9 - E: 801539.8</p> <p>K: FOUND 1/2" REBAR N: 597119.0 - E: 798900.6</p> <p>L: FOUND 12"x6"x4" LIMESTONE ROCK N: 602406.9 - E: 798845.3</p>	<p><b>17 OPERATOR CERTIFICATION</b> I hereby certify that the information contained herein is true and complete to the best of my knowledge and belief, and that this organization either owns a working interest or unleased mineral interest in the land including the proposed bottom hole location or has a right to drill this well at this location pursuant to a contract with an owner of such a mineral or working interest, or to a voluntary pooling agreement or a compulsory pooling order heretofore entered by the division.</p> <p>Signature _____ Date _____</p> <p>Printed Name _____</p> <p>E-mail Address _____</p>
	<p><b>18 SURVEYOR CERTIFICATION</b> I hereby certify that the well location shown on this plat was plotted from field notes of actual surveys made by me or under my supervision, and that the same is true and correct to the best of my belief.</p> <p><b>12/09/2021</b> Date of Survey</p> <p>Signature and Seal of Professional Surveyor _____</p> <p><b>19680</b> Certificate Number</p>	

Job No: LS21121275

District I  
1625 N. French Dr., Hobbs, NM 88240  
Phone: (575) 393-6161 Fax: (575) 393-0720  
District II  
811 S. First St., Artesia, NM 88210  
Phone: (575) 748-1283 Fax: (575) 748-9720  
District III  
1000 Rio Brazos Road, Aztec, NM 87410  
Phone: (505) 334-6178 Fax: (505) 334-6170  
District IV  
1220 S. St. Francis Dr., Santa Fe, NM 87505  
Phone: (505) 476-3460 Fax: (505) 476-3462

State of New Mexico  
Energy, Minerals & Natural Resources Department  
OIL CONSERVATION DIVISION  
1220 South St. Francis Dr.  
Santa Fe, NM 87505

Form C-102  
Revised August 1, 2011  
Submit one copy to appropriate  
District Office

☐ AMENDED REPORT

WELL LOCATION AND ACREAGE DEDICATION PLAT

1 API Number		2 Pool Code		3 Pool Name					
4 Property Code		5 Property Name <b>SANTA VACA 19/18 B3PA FEE</b>						6 Well Number <b>1H</b>	
7 OGRID NO.		8 Operator Name <b>MEWBOURNE OIL COMPANY</b>						9 Elevation <b>3792'</b>	
10 Surface Location									
UL or lot no. <b>P</b>	Section <b>19</b>	Township <b>19S</b>	Range <b>35E</b>	Lot Idn	Feet from the <b>205</b>	North/South line <b>SOUTH</b>	Feet From the <b>1300</b>	East/West line <b>EAST</b>	County <b>LEA</b>
11 Bottom Hole Location If Different From Surface									
UL or lot no. <b>A</b>	Section <b>18</b>	Township <b>19S</b>	Range <b>35E</b>	Lot Idn	Feet from the <b>100</b>	North/South line <b>NORTH</b>	Feet from the <b>660</b>	East/West line <b>EAST</b>	County <b>LEA</b>
12 Dedicated Acres		13 Joint or Infill		14 Consolidation Code		15 Order No.			

No allowable will be assigned to this completion until all interest have been consolidated or a non-standard unit has been approved by the division.

	<p><b>17 OPERATOR CERTIFICATION</b> I hereby certify that the information contained herein is true and complete to the best of my knowledge and belief, and that this organization either owns a working interest or undivided mineral interest in the land including the proposed bottom hole location or has a right to drill this well at this location pursuant to a contract with an owner of such a mineral or working interest, or to a voluntary pooling agreement or a compulsory pooling order heretofore entered by the division.</p> <p>Signature _____ Date _____</p> <p>Printed Name _____</p> <p>E-mail Address _____</p>
	<p><b>18 SURVEYOR CERTIFICATION</b> I hereby certify that the well location shown on this plat was plotted from field notes of actual surveys made by me or under my supervision, and that the same is true and correct to the best of my belief.</p> <p><b>12/09/2021</b> Date of Survey</p> <p>Signature and Seal of Professional Surveyor _____</p> <p><b>19680</b> Certificate Number</p>

Job No: LS21121276



Revised March 23, 2017

RECEIVED:	REVIEWER:	TYPE:	APP NO:
-----------	-----------	-------	---------

ABOVE THIS TABLE FOR OCD DIVISION USE ONLY

**NEW MEXICO OIL CONSERVATION DIVISION**  
 - Geological & Engineering Bureau -  
 1220 South St. Francis Drive, Santa Fe, NM 87505



### ADMINISTRATIVE APPLICATION CHECKLIST

THIS CHECKLIST IS MANDATORY FOR ALL ADMINISTRATIVE APPLICATIONS FOR EXCEPTIONS TO DIVISION RULES AND REGULATIONS WHICH REQUIRE PROCESSING AT THE DIVISION LEVEL IN SANTA FE

Applicant: \_\_\_\_\_ OGRID Number: \_\_\_\_\_  
 Well Name: \_\_\_\_\_ API: \_\_\_\_\_  
 Pool: \_\_\_\_\_ Pool Code: \_\_\_\_\_

### SUBMIT ACCURATE AND COMPLETE INFORMATION REQUIRED TO PROCESS THE TYPE OF APPLICATION INDICATED BELOW

1) **TYPE OF APPLICATION:** Check those which apply for [A]

A. Location – Spacing Unit – Simultaneous Dedication

☐ NSL      ☐ NSP (PROJECT AREA)      ☐ NSP (PRORATION UNIT)      ☐ SD

B. Check one only for [ I ] or [ II ]

[ I ] Commingling – Storage – Measurement

☐ DHC    ☐ CTB    ☐ PLC    ☐ PC    ☐ OLS    ☐ OLM

[ II ] Injection – Disposal – Pressure Increase – Enhanced Oil Recovery

☐ WFX    ☐ PMX    ☐ SWD    ☐ IPI    ☐ EOR    ☐ PPR

2) **NOTIFICATION REQUIRED TO:** Check those which apply.

- A. ☐ Offset operators or lease holders  
 B. ☐ Royalty, overriding royalty owners, revenue owners  
 C. ☐ Application requires published notice  
 D. ☐ Notification and/or concurrent approval by SLO  
 E. ☐ Notification and/or concurrent approval by BLM  
 F. ☐ Surface owner  
 G. ☐ For all of the above, proof of notification or publication is attached, and/or,  
 H. ☐ No notice required

#### FOR OCD ONLY

- ☐ Notice Complete  
☐ Application Content Complete

3) **CERTIFICATION:** I hereby certify that the information submitted with this application for administrative approval is **accurate** and **complete** to the best of my knowledge. I also understand that **no action** will be taken on this application until the required information and notifications are submitted to the Division.

**Note: Statement must be completed by an individual with managerial and/or supervisory capacity.**

\_\_\_\_\_  
 Print or Type Name

Chad Cole  
 Signature

\_\_\_\_\_  
 Date

\_\_\_\_\_  
 Phone Number

\_\_\_\_\_  
 e-mail Address

Revised March 23, 2017

RECEIVED:	REVIEWER:	TYPE:	APP NO:
-----------	-----------	-------	---------

ABOVE THIS TABLE FOR OCD DIVISION USE ONLY

**NEW MEXICO OIL CONSERVATION DIVISION**  
 - Geological & Engineering Bureau -  
 1220 South St. Francis Drive, Santa Fe, NM 87505



### ADMINISTRATIVE APPLICATION CHECKLIST

THIS CHECKLIST IS MANDATORY FOR ALL ADMINISTRATIVE APPLICATIONS FOR EXCEPTIONS TO DIVISION RULES AND REGULATIONS WHICH REQUIRE PROCESSING AT THE DIVISION LEVEL IN SANTA FE

Applicant: \_\_\_\_\_ OGRID Number: \_\_\_\_\_  
 Well Name: \_\_\_\_\_ API: \_\_\_\_\_  
 Pool: \_\_\_\_\_ Pool Code: \_\_\_\_\_

### SUBMIT ACCURATE AND COMPLETE INFORMATION REQUIRED TO PROCESS THE TYPE OF APPLICATION INDICATED BELOW

1) **TYPE OF APPLICATION:** Check those which apply for [A]

A. Location – Spacing Unit – Simultaneous Dedication

☐ NSL      ☐ NSP (PROJECT AREA)      ☐ NSP (PRORATION UNIT)      ☐ SD

B. Check one only for [ I ] or [ II ]

[ I ] Commingling – Storage – Measurement

☐ DHC    ☐ CTB    ☐ PLC    ☐ PC    ☐ OLS    ☐ OLM

[ II ] Injection – Disposal – Pressure Increase – Enhanced Oil Recovery

☐ WFX    ☐ PMX    ☐ SWD    ☐ IPI    ☐ EOR    ☐ PPR

2) **NOTIFICATION REQUIRED TO:** Check those which apply.

- A. ☐ Offset operators or lease holders  
 B. ☐ Royalty, overriding royalty owners, revenue owners  
 C. ☐ Application requires published notice  
 D. ☐ Notification and/or concurrent approval by SLO  
 E. ☐ Notification and/or concurrent approval by BLM  
 F. ☐ Surface owner  
 G. ☐ For all of the above, proof of notification or publication is attached, and/or,  
 H. ☐ No notice required

#### FOR OCD ONLY

- ☐ Notice Complete  
☐ Application Content Complete

3) **CERTIFICATION:** I hereby certify that the information submitted with this application for administrative approval is **accurate** and **complete** to the best of my knowledge. I also understand that **no action** will be taken on this application until the required information and notifications are submitted to the Division.

**Note: Statement must be completed by an individual with managerial and/or supervisory capacity.**

\_\_\_\_\_  
 Print or Type Name

\_\_\_\_\_  
 Date

\_\_\_\_\_  
 Phone Number

\_\_\_\_\_  
 Signature

\_\_\_\_\_  
 e-mail Address

Revised March 23, 2017

RECEIVED:	REVIEWER:	TYPE:	APP NO:
-----------	-----------	-------	---------

ABOVE THIS TABLE FOR OCD DIVISION USE ONLY

**NEW MEXICO OIL CONSERVATION DIVISION**  
 - Geological & Engineering Bureau -  
 1220 South St. Francis Drive, Santa Fe, NM 87505



### ADMINISTRATIVE APPLICATION CHECKLIST

THIS CHECKLIST IS MANDATORY FOR ALL ADMINISTRATIVE APPLICATIONS FOR EXCEPTIONS TO DIVISION RULES AND REGULATIONS WHICH REQUIRE PROCESSING AT THE DIVISION LEVEL IN SANTA FE

Applicant: \_\_\_\_\_ OGRID Number: \_\_\_\_\_  
 Well Name: \_\_\_\_\_ API: \_\_\_\_\_  
 Pool: \_\_\_\_\_ Pool Code: \_\_\_\_\_

### SUBMIT ACCURATE AND COMPLETE INFORMATION REQUIRED TO PROCESS THE TYPE OF APPLICATION INDICATED BELOW

1) **TYPE OF APPLICATION:** Check those which apply for [A]

A. Location – Spacing Unit – Simultaneous Dedication

☐ NSL      ☐ NSP (PROJECT AREA)      ☐ NSP (PRORATION UNIT)      ☐ SD

B. Check one only for [ I ] or [ II ]

[ I ] Commingling – Storage – Measurement

☐ DHC    ☐ CTB    ☐ PLC    ☐ PC    ☐ OLS    ☐ OLM

[ II ] Injection – Disposal – Pressure Increase – Enhanced Oil Recovery

☐ WFX    ☐ PMX    ☐ SWD    ☐ IPI    ☐ EOR    ☐ PPR

2) **NOTIFICATION REQUIRED TO:** Check those which apply.

- A. ☐ Offset operators or lease holders  
 B. ☐ Royalty, overriding royalty owners, revenue owners  
 C. ☐ Application requires published notice  
 D. ☐ Notification and/or concurrent approval by SLO  
 E. ☐ Notification and/or concurrent approval by BLM  
 F. ☐ Surface owner  
 G. ☐ For all of the above, proof of notification or publication is attached, and/or,  
 H. ☐ No notice required

#### FOR OCD ONLY

- ☐ Notice Complete  
☐ Application Content Complete

3) **CERTIFICATION:** I hereby certify that the information submitted with this application for administrative approval is **accurate** and **complete** to the best of my knowledge. I also understand that **no action** will be taken on this application until the required information and notifications are submitted to the Division.

**Note: Statement must be completed by an individual with managerial and/or supervisory capacity.**

\_\_\_\_\_  
 Print or Type Name

*Chad Cole*  
 \_\_\_\_\_

Signature

\_\_\_\_\_  
 Date

\_\_\_\_\_  
 Phone Number

\_\_\_\_\_  
 e-mail Address

**STATE OF NEW MEXICO  
ENERGY, MINERALS AND NATURAL RESOURCES DEPARTMENT  
OIL CONSERVATION DIVISION**

**APPLICATION FOR SURFACE COMMINGLING  
SUBMITTED BY MEWBOURNE OIL CO**

**ORDER NO. PLC-1028**

**ORDER**

The Director of the New Mexico Oil Conservation Division (“OCD”), having considered the application and the recommendation of the OCD Engineering Bureau, issues the following Order.

**FINDINGS OF FACT**

1. Mewbourne Oil Co (“Applicant”) submitted a complete application to surface commingle the oil and gas production from the pools, leases, and wells as described in Exhibit A (“Application”).
2. Applicant proposed a method to allocate the oil and gas production to the pools, leases, and wells to be commingled.
3. Applicant provided notice of the Application to all persons owning an interest in the oil and gas production to be commingled, including the owners of royalty and overriding royalty interests, regardless of whether they have a right or option to take their interests in kind, and those persons either submitted a written waiver or did not file an objection to the Application.
4. Applicant provided notice of the Application to the Bureau of Land Management (“BLM”) or New Mexico State Land Office (“NMSLO”), as applicable.
5. Applicant certified the commingling of oil and gas production from the pools, leases, and wells will not in reasonable probability reduce the value of the oil and gas production to less than if it had remained segregated.
6. Applicant in the notice for the Application stated that it sought authorization to prospectively include additional pools, leases, and wells in accordance with 19.15.12.10 C.(4)(g) NMAC.
7. Applicant stated that it sought authorization to surface commingle and off-lease measure, as applicable, oil and gas production from wells which have not yet been approved to be drilled, but will produce from a pool and lease as described in Exhibit A.

**CONCLUSIONS OF LAW**

8. OCD has jurisdiction to issue this Order pursuant to the Oil and Gas Act, NMSA 1978, §§ 70-2-6, 70-2-11, 70-2-12, 70-2-16, and 70-2-17, 19.15.12. NMAC, and 19.15.23. NMAC.

9. Applicant satisfied the notice requirements for the Application in accordance with 19.15.12.10 A.(2) NMAC, 19.15.12.10 C.(4)(c) NMAC, and 19.15.12.10 C.(4)(e) NMAC, as applicable.
10. Applicant satisfied the notice requirements for the Application in accordance with 19.15.23.9 A.(5) NMAC and 19.15.23.9 A.(6) NMAC, as applicable.
11. Applicant's proposed method of allocation, as modified herein, complies with 19.15.12.10 B.(1) NMAC or 19.15.12.10 C.(1) NMAC, as applicable.
12. Commingling of oil and gas production from state, federal, or tribal leases shall not commence until approved by the BLM or NMSLO, as applicable, in accordance with 19.15.12.10 B.(3) NMAC and 19.15.12.10 C.(4)(h) NMAC.
13. Applicant satisfied the notice requirements for the subsequent addition of pools, leases, and wells in the notice for the Application, in accordance with 19.15.12.10 C.(4)(g) NMAC. Subsequent additions of pools, leases, and wells within Applicant's defined parameters, as modified herein, will not, in reasonable probability, reduce the commingled production's value or otherwise adversely affect the interest owners in the production to be added.
14. By granting the Application with the conditions specified below, this Order prevents waste and protects correlative rights, public health, and the environment.

### **ORDER**

1. Applicant is authorized to surface commingle oil and gas production from the pools, leases, and wells as described in Exhibit A.

Applicant is authorized to store and measure oil and gas production off-lease from the pools, leases, and wells as described in Exhibit A at a central tank battery or gas title transfer meter described in Exhibit A.

Applicant is authorized to surface commingle oil and gas production from wells not included in Exhibit A but that produce from a pool and lease as described in Exhibit A.

Applicant is authorized to store and measure oil and gas production off-lease from wells not included in Exhibit A but that produce from a pool and lease as described in Exhibit A at a central tank battery or gas title transfer meter described in Exhibit A.

2. The allocation of oil and gas production to wells not included in Exhibit A but that produce from a pool and lease as described in Exhibit A shall be determined in the same manner as to wells identified in Exhibit A that produce from that pool and lease, provided that if more than one allocation method is being used or if there are no wells identified in Exhibit A that produce from the pool and lease, then allocation of oil and gas production to each well not included in Exhibit A shall be determined by OCD prior to commingling production from it with the production from another well.



3. The oil and gas production for each well identified in Exhibit A shall be separated and metered prior to commingling it with production from another well.
4. Applicant shall measure and market the commingled oil at a central tank battery described in Exhibit A in accordance with this Order and 19.15.18.15. NMAC or 19.15.23.8. NMAC.
5. Applicant shall measure and market the commingled gas at a well pad, central delivery point, central tank battery, or gas title transfer meter described in Exhibit A in accordance with this Order and 19.15.19.9. NMAC, provided however that if the gas is vented or flared, and regardless of the reason or authorization pursuant to 19.15.28.8 B. NMAC for such venting or flaring, Applicant shall measure or estimate the gas in accordance with 19.15.28.8 E. NMAC.
6. Applicant shall calibrate the meters used to measure or allocate oil and gas production in accordance with 19.15.12.10 C.(2) NMAC.
7. If the commingling of oil and gas production from any pool, lease, or well reduces the value of the commingled oil and gas production to less than if it had remained segregated, no later than sixty (60) days after the decrease in value has occurred Applicant shall submit a new surface commingling application to OCD to amend this Order to remove the pool, lease, or well whose oil and gas production caused the decrease in value. If Applicant fails to submit a new application, this Order shall terminate on the following day, and if OCD denies the application, this Order shall terminate on the date of such action.
8. Applicant may submit an application to amend this Order to add pools, leases, and subsequently drilled wells with spacing units adjacent to or within the tracts commingled by this Order by submitting a Form C-107-B in accordance with 19.15.12.10 C.(4)(g) NMAC, provided the pools, leases, and subsequently drilled wells are within the identified parameters included in the Application.
9. If a well is not included in Exhibit A but produces from a pool and lease as described in Exhibit A, then Applicant shall submit Forms C-102 and C-103 to the OCD Engineering Bureau after the well has been approved to be drilled and prior to off-lease measuring or commingling oil or gas production from it with the production from another well. The Form C-103 shall reference this Order and identify the well, proposed method to determine the allocation of oil and gas production to it, and the location(s) that commingling of its production will occur.
10. Applicant shall not commence commingling oil or gas production from state, federal, or tribal leases until approved by the BLM or NMSLO, as applicable.
11. If OCD determines that Applicant has failed to comply with any provision of this Order, OCD may take any action authorized by the Oil and Gas Act or the New Mexico Administrative Code (NMAC).

12. OCD retains jurisdiction of this matter and reserves the right to modify or revoke this Order as it deems necessary.

**STATE OF NEW MEXICO  
OIL CONSERVATION DIVISION**



---

**ALBERT C. S. CHANG  
DIRECTOR**

**DATE:** 9/12/2025

State of New Mexico  
Energy, Minerals and Natural Resources Department

## Exhibit A

Order: PLC-1028

Operator: Mewbourne Oil Co (14744)

Central Tank Battery: Santa Vaca 19-18 Battery

Central Tank Battery Location: UL N, Section 19, Township 19 South, Range 35 East

Gas Title Transfer Meter Location: UL P, Section 24, Township 19 South, Range 34 East

### Pools

Pool Name	Pool Code
PALMILLO;BONE SPRING, EAST	49553
SCHARB;BONE SPRING	55610

### Leases as defined in 19.15.12.7(C) NMAC

Lease	UL or Q/Q	S-T-R
CA Bone Spring SLO 204278 PUN 1392817	E2W2	18-19S-35E
	E2W2	19-19S-35E
CA Bone Spring SLO 204278 PUN 1392415	E2W2	18-19S-35E
	E2W2	19-19S-35E
CA Bone Spring SLO 204278 PUN 1398754	E2W2	18-19S-35E
	E2W2	19-19S-35E
CA Bone Spring SLO 204279 PUN 1392427	W2W2	18-19S-35E
	W2W2	19-19S-35E
CA Bone Spring SLO 204279 PUN 1392845	W2W2	18-19S-35E
	W2W2	19-19S-35E
CA Bone Spring SLO 204279 PUN 1398743	W2W2	18-19S-35E
	W2W2	19-19S-35E
Fee Leases	E2	18-19S-35E
	ALL	19-19S-35E

### Wells

Well API	Well Name	UL or Q/Q	S-T-R	Pool
30-025-50368	SANTA VACA 19 18 B1MD STATE	W2W2	18-19S-35E	55610
	COM #001H	W2W2	19-19S-35E	
30-025-50487	SANTA VACA 19 18 B1NC STATE	E2W2	18-19S-35E	55610
	COM #001H	E2W2	19-19S-35E	
30-025-50324	SANTA VACA 19 18 B1OB FEE #001H	W2E2	18-19S-35E	49553
		W2E2	19-19S-35E	
30-025-46804	SANTA VACA 19 18 B2MD STATE	W2W2	18-19S-35E	55610
	COM #001H	W2W2	19-19S-35E	
30-025-49154	SANTA VACA 19 18 B2NC STATE	E2W2	18-19S-35E	55610
	COM #001H	E2W2	19-19S-35E	

30-025-50325	SANTA VACA 19 18 B2OB FEE #001H	W2E2 W2E2	18-19S-35E 19-19S-35E	55610
30-025-50241	SANTA VACA 19 18 B2PA FEE #001H	E2E2 E2E2	18-19S-35E 19-19S-35E	55610
30-025-46803	SANTA VACA 19 18 B3MD STATE COM #001H	W2W2 W2W2	18-19S-35E 19-19S-35E	55610
30-025-49155	SANTA VACA 19 18 B3NC STATE COM #001H	E2W2 E2W2	18-19S-35E 19-19S-35E	55610
30-025-50242	SANTA VACA 19 18 B3OB FEE #001H	W2E2 W2E2	18-19S-35E 19-19S-35E	55610
30-025-50326	SANTA VACA 19 18 B3PA FEE #001H	W2E2 W2E2	18-19S-35E 19-19S-35E	49553

Sante Fe Main Office  
Phone: (505) 476-3441

General Information  
Phone: (505) 629-6116

Online Phone Directory  
<https://www.emnrd.nm.gov/ocd/contact-us>

State of New Mexico  
Energy, Minerals and Natural Resources  
Oil Conservation Division  
1220 S. St Francis Dr.  
Santa Fe, NM 87505

CONDITIONS

Action 150148

CONDITIONS

Operator: MEWBOURNE OIL CO P.O. Box 5270 Hobbs, NM 88241	OGRID: 14744
	Action Number: 150148
	Action Type: [C-107] Surface Commingle or Off-Lease (C-107B)

CONDITIONS

Created By	Condition	Condition Date
sarah.clelland	Please review the content of the order to ensure you are familiar with the authorities granted and any conditions of approval. If you have any questions regarding this matter, please email us at <a href="mailto:OCD.Engineer@emnrd.nm.gov">OCD.Engineer@emnrd.nm.gov</a> .	9/15/2025