

Revised March 23, 2017

RECEIVED:	REVIEWER:	TYPE:	APP NO:
-----------	-----------	-------	---------

ABOVE THIS TABLE FOR OCD DIVISION USE ONLY

**NEW MEXICO OIL CONSERVATION DIVISION**  
 - Geological & Engineering Bureau -  
 1220 South St. Francis Drive, Santa Fe, NM 87505



### ADMINISTRATIVE APPLICATION CHECKLIST

THIS CHECKLIST IS MANDATORY FOR ALL ADMINISTRATIVE APPLICATIONS FOR EXCEPTIONS TO DIVISION RULES AND REGULATIONS WHICH REQUIRE PROCESSING AT THE DIVISION LEVEL IN SANTA FE

Applicant: \_\_\_\_\_ OGRID Number: \_\_\_\_\_  
 Well Name: \_\_\_\_\_ API: \_\_\_\_\_  
 Pool: \_\_\_\_\_ Pool Code: \_\_\_\_\_

### SUBMIT ACCURATE AND COMPLETE INFORMATION REQUIRED TO PROCESS THE TYPE OF APPLICATION INDICATED BELOW

1) **TYPE OF APPLICATION:** Check those which apply for [A]

A. Location – Spacing Unit – Simultaneous Dedication

☐ NSL      ☐ NSP (PROJECT AREA)      ☐ NSP (PRORATION UNIT)      ☐ SD

B. Check one only for [ I ] or [ II ]

[ I ] Commingling – Storage – Measurement

☐ DHC    ☐ CTB    ☐ PLC    ☐ PC    ☐ OLS    ☐ OLM

[ II ] Injection – Disposal – Pressure Increase – Enhanced Oil Recovery

☐ WFX    ☐ PMX    ☐ SWD    ☐ IPI    ☐ EOR    ☐ PPR

2) **NOTIFICATION REQUIRED TO:** Check those which apply.

- A. ☐ Offset operators or lease holders  
 B. ☐ Royalty, overriding royalty owners, revenue owners  
 C. ☐ Application requires published notice  
 D. ☐ Notification and/or concurrent approval by SLO  
 E. ☐ Notification and/or concurrent approval by BLM  
 F. ☐ Surface owner  
 G. ☐ For all of the above, proof of notification or publication is attached, and/or,  
 H. ☐ No notice required

#### FOR OCD ONLY

- ☐ Notice Complete  
☐ Application Content Complete

- 3) **CERTIFICATION:** I hereby certify that the information submitted with this application for administrative approval is **accurate** and **complete** to the best of my knowledge. I also understand that **no action** will be taken on this application until the required information and notifications are submitted to the Division.

**Note: Statement must be completed by an individual with managerial and/or supervisory capacity.**

Print or Type Name

*Russell Young*

Signature

Date

Phone Number

e-mail Address



November 20, 2025

**VIA ONLINE FILING**

Albert C.S. Chang, Division Director  
Oil Conservation Division  
New Mexico Department of Energy, Minerals and Natural Resources  
1220 South Saint Francis Drive  
Santa Fe, NM 87505

**Re: Application of XTO Permian Operating, LLC for administrative approval to surface commingle (pool and lease) oil and gas production from leases comprised of Sections 8, 17, 18, 19, 20, 27, 28, 29, 30, 31, 32, 33 and 34, Township 25 South, Range 30 East, NMPM, AND Sections 3, 4, and 10, Township 26 North, Range 30 East, NMPM, Eddy County, New Mexico (the "Lands")**

Dear Mr. Chang:

XTO Permian Operating, LLC (OGRID No. 373075) ("XTO"), pursuant to 19.15.12.10 NMAC, seeks administrative approval to surface commingle (pool and lease) *diversely* owned oil and gas production at the Poker Lake Unit 27 BD CVB, ("CVB") *insofar as all existing and future wells drilled in the following pools and leases:*

(a) The 7,682.62-acre, more or less, Wolfcamp PA "D" (NMNM 105723198) comprised of:

Township 25 South, Range 30 East, NMPM

Section 08: E2NE, E2SW, SE

Section 17: All

Section 18: Lots 3 & 4, E2SW, E2

Section 19: All

Section 20: All

Section 27: S2

Section 28: All

Section 29: All

Section 30: NE, E2SE

Section 31: E2NE

Section 32: All

Section 33: All

Section 34: All

XTO Permian Operating, LLC.  
6401 Holiday Hill Road, Bldg 5  
Midland, TX 79707

Township 26 South, Range 30 East, N.M.P.M.

Section 03: All

Section 04: NE

Section 10: N2

And includes production from the PURPLE SAGE; WOLFCAMP (GAS) [98220] pool drilled to the following wells:

<u>API</u>	<u>Well Name</u>	<u>Number</u>
30-015-46245	POKER LAKE UNIT 27 BD	102H
30-015-46291	POKER LAKE UNIT 27 BD	103H
30-015-46292	POKER LAKE UNIT 27 BD	104H
30-015-46261	POKER LAKE UNIT 27 BD	105H
30-015-46264	POKER LAKE UNIT 27 BD	121H
30-015-46265	POKER LAKE UNIT 27 BD	122H
30-015-46290	POKER LAKE UNIT 27 BD	124H
30-015-46266	POKER LAKE UNIT 27 BD	125H
30-015-46255	POKER LAKE UNIT 27 BD	126H
30-015-46436	POKER LAKE UNIT 27 BD	128H
30-015-46257	POKER LAKE UNIT 27 BD	152H
30-015-46254	POKER LAKE UNIT 27 BD	154H
30-015-46259	POKER LAKE UNIT 27 BD	158H
30-015-46249	POKER LAKE UNIT 27 BD	161H
30-015-46247	POKER LAKE UNIT 27 BD	163H
30-015-46260	POKER LAKE UNIT 27 BD	165H
30-015-46258	POKER LAKE UNIT 27 BD	167H

- (b) Federal Leases: NMNM105445072, NMNM105552170, NMNM105317154, NMNM105441981, NMNM105554641, and NMNM105316634, consisting of the S/2 of Section 27 and all of Section 34, Township 25 North, Range 30 East and all of Section 3 and the N/2 of Section 10, Township 26 North, Range 30 East, drilled to the WILDCAT G-015 S263001O; BONE SPRING [97814] pool and consisting of the following wells:

<u>API</u>	<u>Well Name</u>	<u>Number</u>
30-015-56506	POKER LAKE UNIT 27 BD	509H
30-015-56507	POKER LAKE UNIT 27 BD	510H
300-15-56491	POKER LAKE UNIT 27 BD	511H
30-015-56497	POKER LAKE UNIT 27 BD	512H
30-015-56492	POKER LAKE UNIT 27 BD	609H
30-015-56508	POKER LAKE UNIT 27 BD	610H
30-015-56363	POKER LAKE UNIT 27 BD	611H
30-015-56490	POKER LAKE UNIT 27 BD	612H

- (c) Pursuant to 19.15.12.10.C(4)(g), from all future additions of pools, leases or leases and pools to the Poker Lake Unit 27 BD CVB ("CVB") with notice provided only to the owners of interests to be added.

Oil and gas production from these leases will be commingled and sold at this CVB, located on the project area in the SW/4 of Section 27, Township 25 North, Range 30 East. XTO plans to use the well test method for allocation of production and measurement purposes. Production will flow from the wellbore to either a test separator or bulk (common) production separator. The test separator will separate

XTO Permian Operating, LLC.  
6401 Holiday Hill Road, Bldg 5  
Midland, TX 79707

the gas, oil, and water. Gas production from the test separator will be metered with a calibrated orifice meter that is manufactured to AGA specifications. Oil production from the test separator will be metered using a Coriolis meter. Gas and oil production will then be allocated on a daily basis based on the most recent individual well tests of oil, gas and water.

**Exhibit 1** is a land plat showing XTO's current development plan, well pads, and the central vessel battery ("CVB Site") in the subject area. The plats also identify the wellbores and leases.

**Exhibit 2** is a completed Application for Surface Commingling (Diverse Ownership) Form C-107B, that includes a statement from Steven D. Wolfe, Senior Facilities Engineer with XTO, explaining how XTO plans to utilize the well test method and the measurement devices to be utilized, along with a detailed schematic of the surface facilities (Attachment A to the statement).

Ownership is diverse between the above-described leases, each of which are either subject to a pooling agreement, unit agreement, or a pooling order and are therefore considered "leases" as defined by 19.15.12.7(C) NMAC. **Exhibit 3** is a list of the interest owners (including any owners of royalty or overriding royalty interests) affected by this application, an example of the letter sent by certified mail advising the interest owners that any objections must be filed in writing with the Division within 20 days from the date the Division receives this application, and proof of mailing. A copy of this application has been provided to the Bureau of Land Management and New Mexico State Lands Office since federal and state lands are involved.

Thank you for your consideration of this application. Please feel free to contact me if you have any questions or need additional information.

Sincerely,

*Russell Young*

Russell Young  
New Mexico Commingle Manager  
Unconventional, Upstream

XTO Permian Operating, LLC.  
6401 Holiday Hill Road, Bldg 5  
Midland, TX 79707





Date: 11/21/2025

# Poker Lake Unit 27 BD CVB Lease Map

EDDY COUNTY, NM

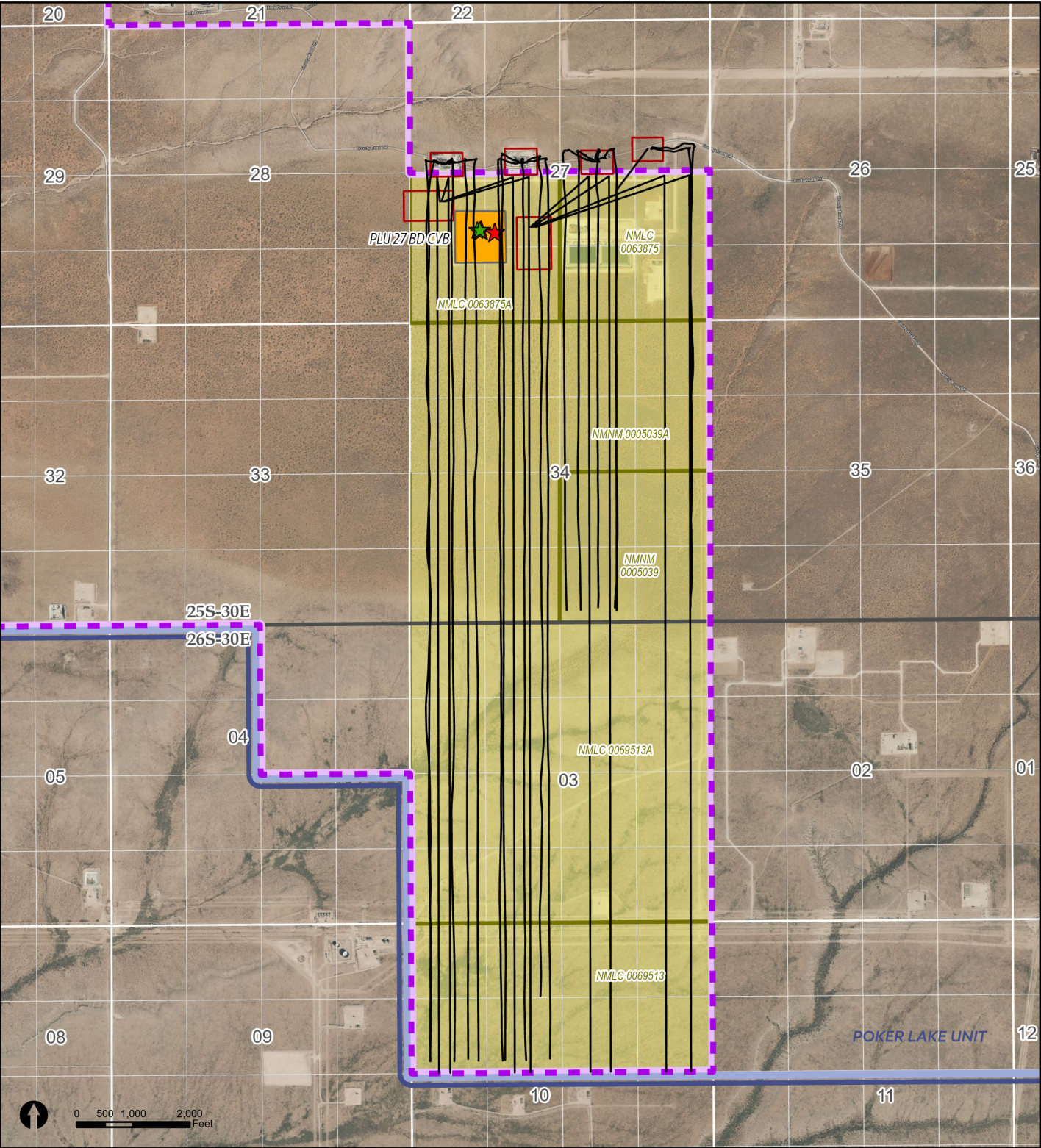
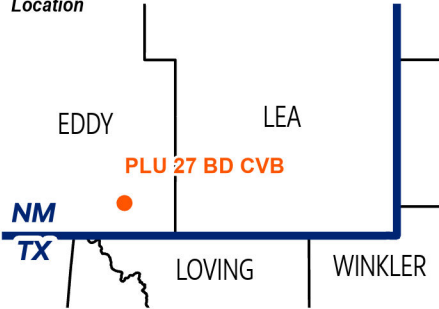
### Legend

- ★ Gas FMP/Sales Meter (2)
- ★ OIL FMP/Sales Meter (2)
- CTB SITE
- POKER LAKE UNIT
- WOLFCAMP "D" 1ST REV NMNM105723198/NMNM071016AT
- FEDERAL SURFACE & MINERAL LEASE
- STATE SURFACE & MINERAL LEASE

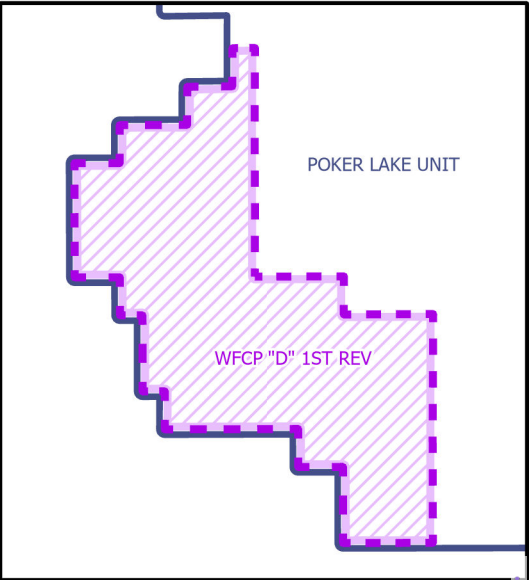
### Wells

3001546245 POKER LAKE UNIT 27 BD 102H  
3001546291 POKER LAKE UNIT 27 BD 103H  
3001546292 POKER LAKE UNIT 27 BD 104H  
3001546261 POKER LAKE UNIT 27 BD 105H  
3001546264 POKER LAKE UNIT 27 BD 121H  
3001546265 POKER LAKE UNIT 27 BD 122H  
3001546290 POKER LAKE UNIT 27 BD 124H  
3001546266 POKER LAKE UNIT 27 BD 125H  
3001546255 POKER LAKE UNIT 27 BD 126H  
3001546436 POKER LAKE UNIT 27 BD 128H  
3001546257 POKER LAKE UNIT 27 BD 152H  
3001546254 POKER LAKE UNIT 27 BD 154H  
3001546259 POKER LAKE UNIT 27 BD 158H  
3001546249 POKER LAKE UNIT 27 BD 161H  
3001546247 POKER LAKE UNIT 27 BD 163H  
3001546260 POKER LAKE UNIT 27 BD 165H  
3001546258 POKER LAKE UNIT 27 BD 167H  
3001556506 POKER LAKE UNIT 27 BD 509H  
3001556507 POKER LAKE UNIT 27 BD 510H  
3001556491 POKER LAKE UNIT 27 BD 511H  
3001556497 POKER LAKE UNIT 27 BD 512H  
3001556492 POKER LAKE UNIT 27 BD 609H  
3001556508 POKER LAKE UNIT 27 BD 610H  
3001556363 POKER LAKE UNIT 27 BD 611H  
3001556490 POKER LAKE UNIT 27 BD 612H

### Location



## WOLFCAMP PA





District I  
1625 N. French Drive, Hobbs, NM 88240  
District II  
811 S. First St., Artesia, NM 88210  
District III  
1000 Rio Brazos Road, Aztec, NM 87410  
District IV  
1220 S. St Francis Dr, Santa Fe, NM  
87505

State of New Mexico  
Energy, Minerals and Natural Resources Department

Form C-107-B  
Revised August 1, 2011

**OIL CONSERVATION DIVISION**  
1220 S. St Francis Drive  
Santa Fe, New Mexico 87505

Submit the original  
application to the Santa Fe  
office with one copy to the  
appropriate District Office.

**APPLICATION FOR SURFACE COMMINGLING (DIVERSE OWNERSHIP)**

OPERATOR NAME: [373075] XTO PERMIAN OPERATING LLC..

OPERATOR ADDRESS: 6401 Holiday Hill Road, Midland, TX 79707

APPLICATION TYPE:

☐ Pool Commingling ☐ Lease Commingling ☒ Pool and Lease Commingling ☐ Off-Lease Storage and Measurement (Only if not Surface Commingled)

LEASE TYPE: ☐ Fee ☒ State ☒ Federal

Is this an Amendment to existing Order? ☐ Yes ☐ No If "Yes", please include the appropriate Order No. \_\_\_\_\_

Have the Bureau of Land Management (BLM) and State Land office (SLO) been notified in writing of the proposed commingling

☒ Yes ☐ No

**(A) POOL COMMINGLING**  
Please attach sheets with the following information

(1) Pool Names and Codes	Gravities / BTU of Non-Commingled Production	Calculated Gravities / BTU of Commingled Production		Calculated Value of Commingled Production	Volumes
[98220] PURPLE SAGE; WOLFCAMP (GAS)	50/1295	48/1246		\$59.25/4.55	6,523/bbl 57,004/mcfd
[97814] WILDCAT G-015 S263001O; BONE SPRING	45/1159				11,748/bbl 33,693/mcfd

(2) Are any wells producing at top allowables? ☐ Yes ☒ No

(3) Has all interest owners been notified by certified mail of the proposed commingling? ☒ Yes ☐ No.

(4) Measurement type: ☐ Metering ☒ Other (Specify) Well Test Method

(5) Will commingling decrease the value of production? ☐ Yes ☒ No If "yes", describe why commingling should be approved

**(B) LEASE COMMINGLING**  
Please attach sheets with the following information

(1) Pool Name and Code.

(2) Is all production from same source of supply? ☐ Yes ☐ No

(3) Has all interest owners been notified by certified mail of the proposed commingling? ☐ Yes ☐ No

(4) Measurement type: ☐ Metering ☐ Other (Specify)

**(C) POOL and LEASE COMMINGLING**  
Please attach sheets with the following information

(1) Complete Sections A and E.

**(D) OFF-LEASE STORAGE and MEASUREMENT**  
Please attached sheets with the following information

(1) Is all production from same source of supply? ☐ Yes ☐ No

(2) Include proof of notice to all interest owners.

**(E) ADDITIONAL INFORMATION (for all application types)**  
Please attach sheets with the following information

(1) A schematic diagram of facility, including legal location. See attached

(2) A plat with lease boundaries showing all well and facility locations. Include lease numbers if Federal or State lands are involved. See attached

(3) Lease Names, Lease and Well Numbers, and API Numbers. See attached

I hereby certify that the information above is true and complete to the best of my knowledge and belief.

SIGNATURE: Russell Young TITLE: NM Commingle Manager DATE: 11/20/2025

TYPE OR PRINT NAME Russell Young TELEPHONE NO.: (832) 302-5430

E-MAIL ADDRESS: russell.young@exxonmobil.com

## Facility Process Flow and Measurement

The production from each well will flow from its respective surface hole location through a flowline to an inlet header on the tank battery. The layout of the Facility is shown on the included Site Flow Diagram (SFD). The inlet header directs the well production into either a test separator or bulk (common) production separator. If a well is not directed to the test separator, the flow is directed into the bulk production separator.

The test separator is a horizontal vessel where the gas, oil, and water are separated and measured. The test separator has been designed to handle the Initial Production (IP) Rates of the wells and accurately measure the fluids. The gas flow is measured using an orifice meter following API Standard MPMS14.3.2 and the flow is calculated using an electronic flow meter (EFM). The oil flow is measured using a Coriolis flow meter following the API Standard MPMS 5.6. The water flow is measured using a mag meter. One well can be tested every day. Well test by separating and metering the oil production from the well for either (a) a minimum of twenty-four (24) consecutive hours; or (b) a combination of nonconsecutive periods that meet the following conditions: (i) each period shall be a minimum of six (6) hours; and (ii) the total duration of the nonconsecutive periods shall be a minimum of eighteen (18) hours. The Well Test Method used follows the American Petroleum Institute's Manual of Petroleum Measurement Standards, Chapter 20 (API MPMS 20.1) and meets BLM, state, and federal regulations.

At the battery, fluid that is sent to the bulk production separators separates oil, gas and water. The oil then flows into a horizontal heater treater where heat is added to meet RVP requirements. From the heater treater the oil is routed to a Vapor Recovery Tower (VRT) and then transferred into the oil pipeline using a LACT unit. The LACT unit has a Coriolis flow meter that will be used as the sales meter. The sales meter for the oil will be at the battery.

After separation, the gas from the battery test and bulk separators is recombined into a shared battery gas line along with flash gas. Flash gas is recovered with compression from heater treaters, VRTs, and vessels. The shared gas line allows flow to either a gas sales line or to a flare on location at the battery. Gas flow is directed to the flare in the event of an emergency. The gas is measured going to the sales meter utilizing an orifice meter and the flow is calculated using an electronic flow meter (EFM). The gas meter is the gas sales meter for the facility.

After separation, the water from the test and bulk separators is recombined into a shared line routed to a Surge Vessel. The Surge vessel separates any remain gas and oil from the water. The water is pumped into the SWD system pipeline after being measured with a mag meter. The gas is recovered using compression and sent to the gas sales line. The residual oil is recovered and pumped back to the heater treater.

## Reservoir Forecasted Declines

These wells may produce high volumes for a short three-month period and are then expected to decline for the remaining life of each well. After the initial period of hyperbolic decline, production stabilizes at a more predictable exponential decline rate.

## Production and Allocation

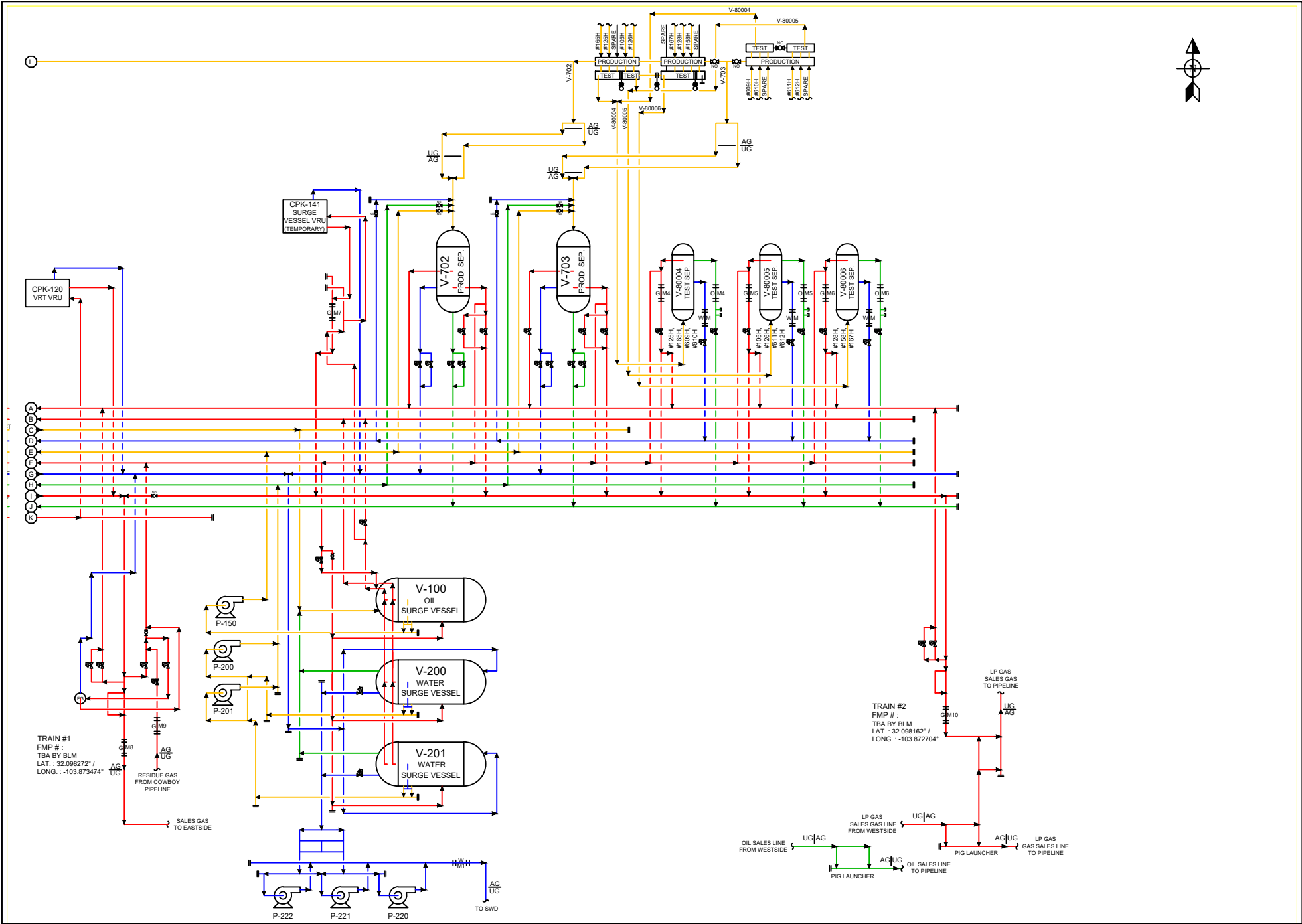
Based on the decline rates, the wells will be tested at differing frequencies for optimum accuracy. Based on the production decline, the following three periods will be used to determine well test frequency:

- Range 1 – Initial Production Period – from the first production until the earlier of either the peak production rate or thirty (30) days after the first production; minimum 10 well tests/per month
- Range 2 – Plateau Period – the end of the initial production period to the peak decline rate; minimum 3 well tests/per month
- Range 3 – Decline Period – the end of plateau period until well is plugged and abandoned; minimum 3 well tests/ per month when the decline rate is >22% per month, 2 well tests/per month when the decline rate is between 22%-10% per month, and 1 well test/per month when the decline rate is <10% per month

Gas and oil production will then be allocated on a daily basis based on the most recent individual well tests of oil, gas, and water.

All the Test Data is collected into our Production Accounting System for Allocation. The allocation methodology is shown specifically in the attached spreadsheet. The time increment for reported sales through the sales meters is monthly.

**Commingled approval will allow XTO to efficiently and effectively market production from the subject acreage.**



Facility Gas Usage	
ROYALTY FREE EQUIPMENT	USAGE
V-500	16.67 MCFD
HEAT. TREAT.	
HP & LP FLARE PILOTS	1.2 MCFD
--	--

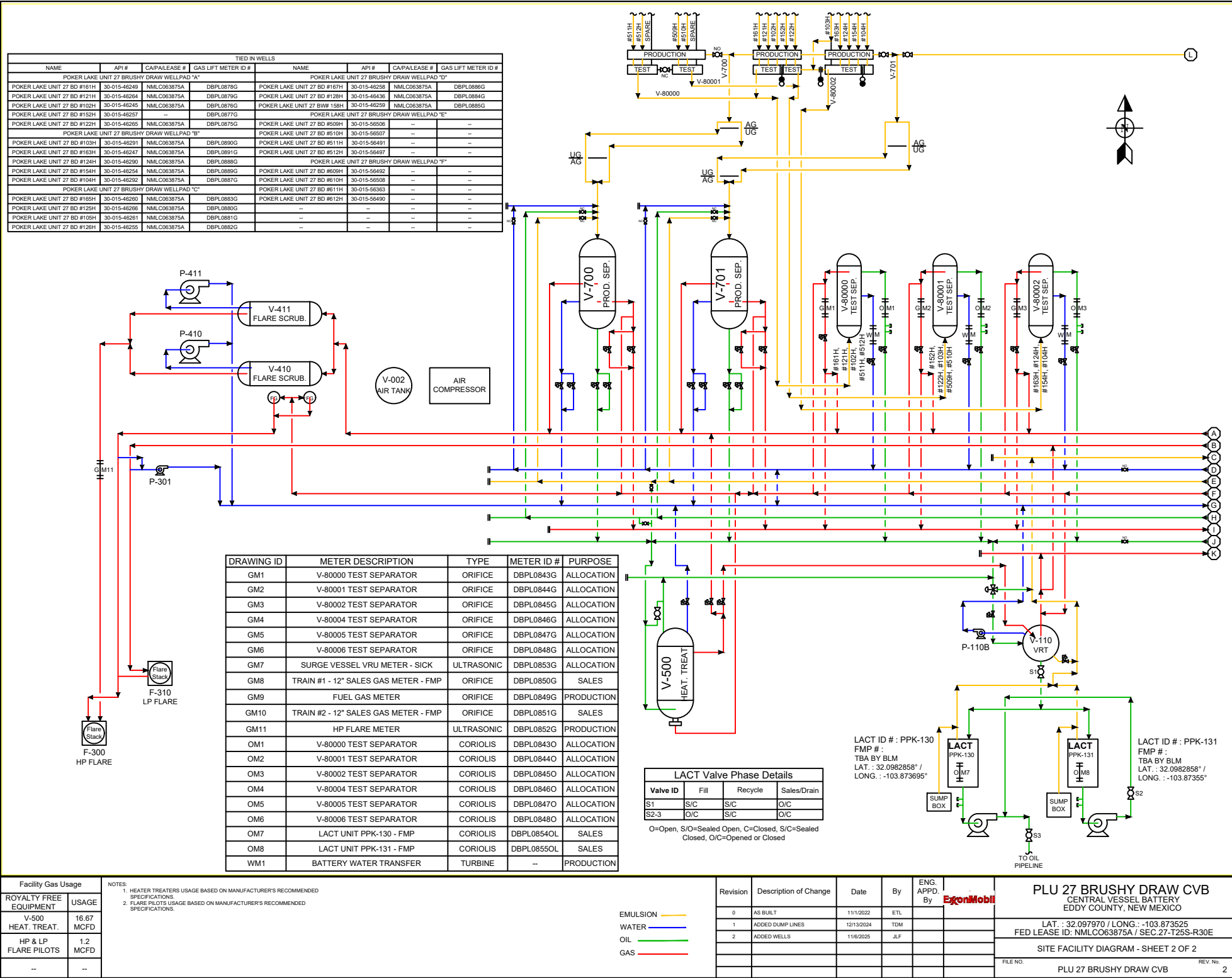
NOTES:  
1. HEATER TREATERS USAGE BASED ON MANUFACTURER'S RECOMMENDED SPECIFICATIONS.  
2. FLARE PILOTS USAGE BASED ON MANUFACTURER'S RECOMMENDED SPECIFICATIONS.

EMULSION  
WATER  
OIL  
GAS

Revision	Description of Change	Date	By	ENG. APP'D By
0	AS BUILT	11/12/2022	ETL	
1	ADDED DUMP LINES	12/13/2024	TDM	
2	ADDED WELLS	11/6/2025	JLF	

PLU 27 BRUSHY DRAW CVB CENTRAL VESSEL BATTERY EDDY COUNTY, NEW MEXICO	
LAT. : 32.097970 / LONG. : -103.873525 FED LEASE ID:NMLC063875A / SEC.27-T25S-R30E	
SITE FACILITY DIAGRAM - SHEET 1 OF 2	
FILE NO.	REV. No.
PLU 27 BRUSHY DRAW CVB	





NAME	ADDRESS	ADDRESS 2
Ellen M. Grooms, Trustee of the EMG Revocable Trust U/A/D 11/01/2004	1000 W. 4th Street	Roswell NM 88201
New Mexico Military Institute	101 W. College Blvd.	Roswell NM 88202
Chevron U.S.A. Inc	1400 Smith Street	Houston TX 77002
LJA Charitable Investments, LLC	1717 West Loop S Ste 1800	Houston TX 77027
32 Minerals I BPEOR NM, LLC	201 Main Street, Ste. 2600	Fort Worth TX 76102
32 Minerals II BPEOR NM, LLC	201 Main Street, Ste. 2600	Fort Worth
BEPCO, L.P.	201 Main Street, Ste. 2600	Fort Worth
BMT I BPEOR NM, LLC	201 Main Street, Ste. 2600	Fort Worth
BMT II BPEOR NM, LLC	201 Main Street, Ste. 2600	Fort Worth
CTV-LMB I BPEOR NM, LLC	201 Main Street, Ste. 2600	Fort Worth
CTV-LMB II BPEOR NM, LLC	201 Main Street, Ste. 2600	Fort Worth
CTV-SRB I BPEOR NM, LLC	201 Main Street, Ste. 2600	Fort Worth
CTV-SRB II BPEOR NM, LLC	201 Main Street, Ste. 2600	Fort Worth
Hyatt Anne Bass Management Trust	201 Main Street, Ste. 2600	Fort Worth
LMBI I BPEOR NM, LLC	201 Main Street, Ste. 2600	Fort Worth
LMBI II BPEOR NM, LLC	201 Main Street, Ste. 2600	Fort Worth
PRB II 1993C I BPEOR NM, LLC	201 Main Street, Ste. 2600	Fort Worth
PRB II 1993C II BPEOR NM, LLC	201 Main Street, Ste. 2600	Fort Worth
RFB 1993C I BPEOR NM, LLC	201 Main Street, Ste. 2600	Fort Worth
RFB 1993C II BPEOR NM, LLC	201 Main Street, Ste. 2600	Fort Worth
Samantha Simms Bass Management Trust	201 Main Street, Ste. 2600	Fort Worth
SRBI I BPEOR NM, LLC	201 Main Street, Ste. 2600	Fort Worth
SRBI II BPEOR NM, LLC	201 Main Street, Ste. 2600	Fort Worth
SSB 1993C I BPEOR NM, LLC	201 Main Street, Ste. 2600	Fort Worth
SSB 1993C II BPEOR NM, LLC	201 Main Street, Ste. 2600	Fort Worth
Thru Line BPEOR NM, LLC	201 Main Street, Ste. 2600	Fort Worth
CTAM O&G, LLC	201 Main Street, Ste. 3000	Fort Worth
GC O&G, LLC	201 Main Street, Ste. 3000	Fort Worth
Rolla R. Hinkle, III	205 N. Missouri Ave.	Roswell NM 88201
Bureau of Land Management ATTN: Jonathan Shepard	620 E Greene St	Carlsbad NM 88220
Devon Energy Production Company, L.P.	333 West Sheridan Avenue	Oklahoma City OK 73102-5015
Toles-Com-Ltd.	400 N. Pennsylvania Ave., Ste 950	Roswell NM 88201
Good Earth Minerals, LLC	600 17th Street, Ste. 2800S	Denver CO 80202
Bureau of Land Management	301 Dinosaur Trail	Santa Fe NM 87508
Compound Properties, LLC	652 Pointe Benton Ln	Covington KY 41014
Matlock Minerals Ltd. Co.	849 Broken Arrow	Roswell NM 88201
State of New Mexico Land Office	310 OLD SANTA FE TRAIL	SANTA FE NM 87501
Santa Elena Minerals IV, LP	P.O. Box 2063	Midland TX 79702
Madison M. Hinkle and Susan M. Hinkle Revocable	P.O. Box 2292	Roswell NM 88201
Penasco Petroleum LLC	P.O. Box 2292	Roswell NM 88202
Hope Royalties, LLC	P.O. Box 647	Artesia NM 88211
Mark McClellan and Paula McClellan, as joint tenants	P.O. Box 730	Roswell NM 88201
F. H. Scott	UNK	UNK
W. B. Wilder	UNK	UNK



November 20, 2025

**CERTIFIED MAIL**  
**RETURN RECEIPT REQUESTED**

TO: ALL AFFECTED PARTIES

**Re: Application of XTO Permian Operating, LLC for administrative approval to surface commingle (pool and lease) oil and gas production from leases comprised of Sections 8, 17, 18, 19, 20, 27, 28, 29, 30, 31, 32, 33 and 34, Township 25 South, Range 30 East, NMPM, AND Sections 3, 4, and 10, Township 26 North, Range 30 East, NMPM, Eddy County, New Mexico (the "Lands")**

To Whom It May Concern:

Enclosed is a copy of the above-referenced application, which was filed with the New Mexico Oil Conservation Division on this date. Any objection to this application must be filed in writing within twenty (20) days from the date this application is received by the Division's Santa Fe office located at 1220 South St. Francis Drive, Santa Fe, New Mexico, 87505. If no objection is received within this twenty-day period, this application may be approved administratively by the Division.

If you have any questions about this application, please contact the following:

Russell Young  
(832) 302-5430  
Russell.young@exxonmobil.com

Sincerely,

*Russell Young*

Russell Young  
New Mexico Commingle Manager  
Unconventional, Upstream

XTO Permian Operating, LLC.  
6401 Holiday Hill Road, Bldg 5  
Midland, TX 79707

PLU 27 BD - POSTAL DELIVERY LIST				
CERTIFIED MAIL RECEIPT #	NAME	ADDRESS	ADDRESS 2	DATE NOTIFICATION SENT
9589 0710 5270 1533 1702 67	Ellen M. Grooms, Trustee of the EMG Revocable Trust U/A/D 11/01/2004	1000 W. 4th Street	Roswell NM 88201	11/24/2025
9589 0710 5270 1533 1702 74	New Mexico Military Institute	101 W. College Blvd.	Roswell NM 88202	11/24/2025
9589 0710 5270 1533 1702 81	Chevron U.S.A. Inc	1400 Smith Street	Houston TX 77002	11/24/2025
9589 0710 5270 1533 1702 98	LJA Charitable Investments, LLC	1717 West Loop S Ste 1800	Houston TX 77027	11/24/2025
9589 0710 5270 1533 1703 04	32 Minerals I BPEOR NM, LLC	201 Main Street, Ste. 2600	Fort Worth TX 76102	11/24/2025
9589 0710 5270 1533 1703 04	32 Minerals II BPEOR NM, LLC	201 Main Street, Ste. 2600	Fort Worth TX 76102	11/24/2025
9589 0710 5270 1533 1703 04	BEPCO, L.P.	201 Main Street, Ste. 2600	Fort Worth TX 76102	11/24/2025
9589 0710 5270 1533 1703 04	BMT I BPEOR NM, LLC	201 Main Street, Ste. 2600	Fort Worth TX 76102	11/24/2025
9589 0710 5270 1533 1703 04	BMT II BPEOR NM, LLC	201 Main Street, Ste. 2600	Fort Worth TX 76102	11/24/2025
9589 0710 5270 1533 1703 04	CTV-LMB I BPEOR NM, LLC	201 Main Street, Ste. 2600	Fort Worth TX 76102	11/24/2025
9589 0710 5270 1533 1703 04	CTV-LMB II BPEOR NM, LLC	201 Main Street, Ste. 2600	Fort Worth TX 76102	11/24/2025
9589 0710 5270 1533 1703 04	CTV-SRB I BPEOR NM, LLC	201 Main Street, Ste. 2600	Fort Worth TX 76102	11/24/2025
9589 0710 5270 1533 1703 04	CTV-SRB II BPEOR NM, LLC	201 Main Street, Ste. 2600	Fort Worth TX 76102	11/24/2025
9589 0710 5270 1533 1703 04	Hyatt Anne Bass Management Trust	201 Main Street, Ste. 2600	Fort Worth TX 76102	11/24/2025
9589 0710 5270 1533 1703 04	LMBI I BPEOR NM, LLC	201 Main Street, Ste. 2600	Fort Worth TX 76102	11/24/2025
9589 0710 5270 1533 1703 04	LMBI II BPEOR NM, LLC	201 Main Street, Ste. 2600	Fort Worth TX 76102	11/24/2025
9589 0710 5270 1533 1703 04	PRB II 1993C I BPEOR NM, LLC	201 Main Street, Ste. 2600	Fort Worth TX 76102	11/24/2025
9589 0710 5270 1533 1703 04	PRB II 1993C II BPEOR NM, LLC	201 Main Street, Ste. 2600	Fort Worth TX 76102	11/24/2025
9589 0710 5270 1533 1703 04	RFB 1993C I BPEOR NM, LLC	201 Main Street, Ste. 2600	Fort Worth TX 76102	11/24/2025
9589 0710 5270 1533 1703 04	RFB 1993C II BPEOR NM, LLC	201 Main Street, Ste. 2600	Fort Worth TX 76102	11/24/2025
9589 0710 5270 1533 1703 04	Samantha Simms Bass Management Trust	201 Main Street, Ste. 2600	Fort Worth TX 76102	11/24/2025
9589 0710 5270 1533 1703 04	SRBI I BPEOR NM, LLC	201 Main Street, Ste. 2600	Fort Worth TX 76102	11/24/2025
9589 0710 5270 1533 1703 04	SRBI II BPEOR NM, LLC	201 Main Street, Ste. 2600	Fort Worth TX 76102	11/24/2025
9589 0710 5270 1533 1703 04	SSB 1993C I BPEOR NM, LLC	201 Main Street, Ste. 2600	Fort Worth TX 76102	11/24/2025
9589 0710 5270 1533 1703 04	SSB 1993C II BPEOR NM, LLC	201 Main Street, Ste. 2600	Fort Worth TX 76102	11/24/2025
9589 0710 5270 1533 1703 04	Thru Line BPEOR NM, LLC	201 Main Street, Ste. 2600	Fort Worth TX 76102	11/24/2025
9589 0710 5270 1533 1703 04	CTAM O&G, LLC	201 Main Street, Ste. 3000	Fort Worth TX 76102	11/24/2025
9589 0710 5270 1533 1703 04	GC O&G, LLC	201 Main Street, Ste. 3000	Fort Worth TX 76102	11/24/2025
9589 0710 5270 1533 1703 11	Rolla R. Hinkle, III	205 N. Missouri Ave.	Roswell NM 88201	11/24/2025
9589 0710 5270 1533 1703 28	Bureau of Land Management ATTN: Jonathan Shepard	620 E Greene St	Carlsbad NM 88220	11/24/2025
9589 0710 5270 1533 1703 35	Devon Energy Production Company, L.P.	333 West Sheridan Avenue	Oklahoma City OK 73102-5015	11/24/2025
9589 0710 5270 1533 1703 42	Toles-Com-Ltd.	400 N. Pennsylvania Ave., Ste 950	Roswell NM 88201	11/24/2025
9589 0710 5270 1533 1703 59	Good Earth Minerals, LLC	600 17th Street, Ste, 2800S	Denver CO 80202	11/24/2025
9589 0710 5270 1533 1703 66	Bureau of Land Management	301 Dinosaur Trail	Santa Fe NM 87508	11/24/2025
9589 0710 5270 1533 1703 73	Compound Properties, LLC	652 Pointe Benton Ln	Covington KY 41014	11/24/2025
9589 0710 5270 1533 1703 80	Matlock Minerals Ltd. Co.	849 Broken Arrow	Roswell NM 88201	11/24/2025
9589 0710 5270 1533 1703 97	State of New Mexico Land Office	310 OLD SANTA FE TRAIL	SANTA FE NM 87501	11/24/2025
9589 0710 5270 1533 1704 03	Santa Elena Minerals IV, LP	P.O. Box 2063	Midland TX 79702	11/24/2025
9589 0710 5270 1533 1704 10	n M. Hinkle and Susan M. Hinkle Revocab	P.O. Box 2292	Roswell NM 88201	11/24/2025
9589 0710 5270 1533 1704 27	Penasco Petroleum LLC	P.O. Box 2292	Roswell NM 88202	11/24/2025
9589 0710 5270 1533 1704 34	Hope Royalties, LLC	P.O. Box 647	Artesia NM 88211	11/24/2025
9589 0710 5270 1533 1704 41	Mark McClellan and Paula McClellan, as joint tenants	P.O. Box 730	Roswell NM 88201	11/24/2025
N/A	F. H. Scott	UNK	UNK	N/A
N/A	W. B. Wilder	UNK	UNK	N/A



<div>Released to Imaging: 12/23/2025 7:49:55 AM</div> <div>9589071052701533170267</div> <div><div><div>Copy</div><div>Add to Informed Delivery</div></div><div><div>Latest Update</div><div>Your item has been delivered to an agent at the front desk, reception, or mail room at 10:32 am on November 28, 2025 in ROSWELL, NM 88201.</div><div>Get More Out of USPS Tracking:<div>USPS Tracking Plus®</div></div></div><div><div>Delivered to Agent</div><div>Delivered to Agent, Front Desk/Reception/Mail Room</div><div>ROSWELL, NM 88201</div><div>November 28, 2025, 10:32 am</div><div>See All Tracking History</div><div>What Do USPS Tracking Statuses Mean?</div></div></div>	
<div>Text &amp; Email Updates</div>	
<div>USPS Tracking Plus®</div>	
<div>Product Information</div>	
<div>See Less</div>	
<div>Tracking Number: 9589071052701533170274</div> <div><div><div>Copy</div><div>Add to Informed Delivery</div></div><div><div>Latest Update</div><div>Your item was delivered to an individual at the address at 9:57 am on December 1, 2025 in ROSWELL, NM 88201.</div><div>Get More Out of USPS Tracking:<div>USPS Tracking Plus®</div></div></div><div><div>Delivered</div><div>Delivered, Left with Individual</div><div>ROSWELL, NM 88201</div><div>December 1, 2025, 9:57 am</div><div>See All Tracking History</div><div>What Do USPS Tracking Statuses Mean?</div></div></div>	
<div>See More</div>	
<div>Tracking Number: 9589071052701533170281</div> <div><div><div>Copy</div><div>Add to Informed Delivery</div></div><div><div>Latest Update</div><div>Your item has been delivered to an agent. The item was picked up at USPS at 2:33 pm on December 1, 2025 in HOUSTON, TX 77002.</div><div>Get More Out of USPS Tracking:<div>USPS Tracking Plus®</div></div></div><div><div>Delivered to Agent</div><div>Delivered to Agent, Picked up at USPS</div><div>HOUSTON, TX 77002</div><div>December 1, 2025, 2:33 pm</div><div>See All Tracking History</div><div>What Do USPS Tracking Statuses Mean?</div></div></div>	
<div>See More</div>	
<div>Tracking Number: 9589071052701533170298</div> <div><div><div>Copy</div><div>Add to Informed Delivery</div></div><div><div>Latest Update</div><div>Your item was delivered to the front desk, reception area, or mail room at 3:11 pm on December 1, 2025 in HOUSTON, TX 77027.</div><div>Get More Out of USPS Tracking:<div>USPS Tracking Plus®</div></div></div><div><div>Delivered</div><div>Delivered, Front Desk/Reception/Mail Room</div><div>HOUSTON, TX 77027</div><div>December 1, 2025, 3:11 pm</div><div>See All Tracking History</div><div>What Do USPS Tracking Statuses Mean?</div></div></div>	
<div>See More</div>	
<div>Tracking Number: 9589071052701533170304</div> <div><div><div>Copy</div><div>Add to Informed Delivery</div></div><div><div>Latest Update</div><div>Your item was delivered to an individual at the address at 12:14 pm on December 1, 2025 in FORT WORTH, TX 76102.</div><div>Get More Out of USPS Tracking:<div>USPS Tracking Plus®</div></div></div><div><div>Delivered</div><div>Delivered, Left with Individual</div><div>FORT WORTH, TX 76102</div><div>December 1, 2025, 12:14 pm</div><div>See All Tracking History</div><div>What Do USPS Tracking Statuses Mean?</div></div></div>	
<div>See More</div>	
<div>Tracking Number: 9589071052701533170328</div> <div><div><div>Copy</div><div>Add to Informed Delivery</div></div><div><div>Latest Update</div><div>Your item was delivered to an individual at the address at 11:50 am on November 28, 2025 in CARLSBAD, NM 88220.</div><div>Get More Out of USPS Tracking:<div>USPS Tracking Plus®</div></div></div><div><div>Delivered</div><div>Delivered, Left with Individual</div><div>CARLSBAD, NM 88220</div><div>November 28, 2025, 11:50 am</div><div>See All Tracking History</div><div>What Do USPS Tracking Statuses Mean?</div></div></div>	
<div>See More</div>	
<div>Tracking Number: 9589071052701533170335</div> <div><div><div>Copy</div><div>Add to Informed Delivery</div></div><div><div>Latest Update</div><div>Your item has been delivered and is available at a PO Box at 9:31 am on November 28, 2025 in OKLAHOMA CITY, OK 73102.</div><div>Get More Out of USPS Tracking:<div>USPS Tracking Plus®</div></div></div><div><div>Delivered</div><div>Delivered, PO Box</div><div>OKLAHOMA CITY, OK 73102</div><div>November 28, 2025, 9:31 am</div><div>See All Tracking History</div><div>What Do USPS Tracking Statuses Mean?</div></div></div>	
<div>See More</div>	
<div>Tracking Number: 9589071052701533170342</div> <div><div><div>Copy</div><div>Add to Informed Delivery</div></div><div><div>Latest Update</div><div>Your item was delivered to an individual at the address at 10:20 am on December 1, 2025 in ROSWELL, NM 88201.</div><div>Get More Out of USPS Tracking:<div>USPS Tracking Plus®</div></div></div><div><div>Delivered</div><div>Delivered, Left with Individual</div><div>ROSWELL, NM 88201</div><div>December 1, 2025, 10:20 am</div><div>See All Tracking History</div><div>What Do USPS Tracking Statuses Mean?</div></div></div>	
<div>See More</div>	
<div>Tracking Number: 9589071052701533170359</div> <div><div><div>Copy</div><div>Add to Informed Delivery</div></div><div><div>Latest Update</div><div>Your item was delivered to an individual at the address at 10:38 am on November 29, 2025 in DENVER, CO 80202.</div><div>Get More Out of USPS Tracking:<div>USPS Tracking Plus®</div></div></div><div><div>Delivered</div><div>Delivered, Left with Individual</div><div>DENVER, CO 80202</div><div>November 29, 2025, 10:38 am</div><div>See All Tracking History</div><div>What Do USPS Tracking Statuses Mean?</div></div></div>	
<div>See More</div>	
<div>Tracking Number: 9589071052701533170366</div> <div><div><div>Copy</div><div>Add to Informed Delivery</div></div><div><div>Latest Update</div><div>Your item was delivered to the front desk, reception area, or mail room at 2:35 pm on December 1, 2025 in SANTA FE, NM 87508.</div><div>Get More Out of USPS Tracking:<div>USPS Tracking Plus®</div></div></div><div><div>Delivered</div><div>Delivered, Front Desk/Reception/Mail Room</div><div>SANTA FE, NM 87508</div><div>December 1, 2025, 2:35 pm</div><div>See All Tracking History</div><div>What Do USPS Tracking Statuses Mean?</div></div></div>	
<div>See More</div>	
<div>Tracking Number: 9589071052701533170373</div> <div><div><div>Copy</div><div>Add to Informed Delivery</div></div><div><div>Latest Update</div><div>Your package is moving within the USPS network and is on track to be delivered to its final destination. It is currently in transit to the next facility.</div><div>Get More Out of USPS Tracking:<div>USPS Tracking Plus®</div></div></div><div><div>Delivered</div><div>Delivered, Individual Picked Up at Post Office</div><div>ROSWELL, NM 88201</div><div>November 29, 2025, 12:09 pm</div><div>See All Tracking History</div><div>What Do USPS Tracking Statuses Mean?</div></div></div>	
<div>See More</div>	
<div>Tracking Number: 9589071052701533170397</div> <div><div><div>Copy</div><div>Add to Informed Delivery</div></div><div><div>Latest Update</div><div>Your item was picked up at the post office at 7:57 am on December 2, 2025 in SANTA FE, NM 87501.</div><div>Get More Out of USPS Tracking:<div>USPS Tracking Plus®</div></div></div><div><div>Delivered</div><div>Delivered, Individual Picked Up at Post Office</div><div>SANTA FE, NM 87501</div><div>December 2, 2025, 7:57 am</div><div>See All Tracking History</div><div>What Do USPS Tracking Statuses Mean?</div></div></div>	
<div>See More</div>	
<div>Tracking Number: 9589071052701533170403</div> <div><div><div>Copy</div><div>Add to Informed Delivery</div></div><div><div>Latest Update</div><div>Your item was picked up at the post office at 1:15 pm on December 2, 2025 in MIDLAND, TX 79701.</div><div>Get More Out of USPS Tracking:<div>USPS Tracking Plus®</div></div></div><div><div>Delivered</div><div>Delivered, Individual Picked Up at Post Office</div><div>MIDLAND, TX 79701</div><div>December 2, 2025, 1:15 pm</div><div>See All Tracking History</div><div>What Do USPS Tracking Statuses Mean?</div></div></div>	
<div>See More</div>	
<div>Tracking Number: 9589071052701533170410</div> <div><div><div>Copy</div><div>Add to Informed Delivery</div></div><div><div>Latest Update</div><div>Your item was picked up at the post office at 10:39 am on November 28, 2025 in ROSWELL, NM 88201.</div><div>Get More Out of USPS Tracking:<div>USPS Tracking Plus®</div></div></div><div><div>Delivered</div><div>Delivered, Individual Picked Up at Post Office</div><div>ROSWELL, NM 88201</div><div>November 28, 2025, 10:39 am</div><div>See All Tracking History</div><div>What Do USPS Tracking Statuses Mean?</div></div></div>	
<div>See More</div>	
<div>Tracking Number: 9589071052701533170427</div> <div><div><div>Copy</div><div>Add to Informed Delivery</div></div><div><div>Latest Update</div><div>Your item was picked up at the post office at 10:39 am on November 28, 2025 in ROSWELL, NM 88201.</div><div>Get More Out of USPS Tracking:<div>USPS Tracking Plus®</div></div></div><div><div>Delivered</div><div>Delivered, Individual Picked Up at Post Office</div><div>ROSWELL, NM 88201</div><div>November 28, 2025, 10:39 am</div><div>See All Tracking History</div><div>What Do USPS Tracking Statuses Mean?</div></div></div>	
<div>See More</div>	
<div>Tracking Number: 9589071052701533170434</div> <div><div><div>Copy</div><div>Add to Informed Delivery</div></div><div><div>Latest Update</div><div>Your item was picked up at the post office at 11:32 am on December 1, 2025 in ARTESIA, NM 88210.</div><div>Get More Out of USPS Tracking:<div>USPS Tracking Plus®</div></div></div><div><div>Delivered</div><div>Delivered, Individual Picked Up at Post Office</div><div>ARTESIA, NM 88210</div><div>December 1, 2025, 11:32 am</div><div>See All Tracking History</div><div>What Do USPS Tracking Statuses Mean?</div></div></div>	
<div>See More</div>	
<div>Tracking Number: 9589071052701533170441</div> <div><div><div>Copy</div><div>Add to Informed Delivery</div></div><div><div>Latest Update</div><div>Your item was picked up at the post office at 10:21 am on December 1, 2025 in ROSWELL, NM 88201.</div><div>Get More Out of USPS Tracking:<div>USPS Tracking Plus®</div></div></div><div><div>Delivered</div><div>Delivered, Individual Picked Up at Post Office</div><div>ROSWELL, NM 88201</div><div>December 1, 2025, 10:21 am</div><div>See All Tracking History</div><div>What Do USPS Tracking Statuses Mean?</div></div></div>	
<div>See More</div>	



**Affidavit of Publication****Copy of Publication:**No. 74920

State of New Mexico

Publisher

County of Eddy:

**Adrian Hedden**

being duly sworn, says that he is the

**Publisher**

of the Carlsbad Current Argus, a weekly newspaper of  
 general circulation, published in English at Carlsbad,  
 said county and state, and that the hereto attached

**Legal Ad**

was published in a regular and entire issue of the said  
 Carlsbad Current Argus, a weekly newspaper duly qualified  
 for that purpose within the meaning of Chapter 167 of  
 the 1937 Session Laws of the state of New Mexico for  
1 Consecutive weeks/day on the same

day as follows:

First Publication December 4, 2025

Second Publication \_\_\_\_\_

Third Publication \_\_\_\_\_

Fourth Publication \_\_\_\_\_

Fifth Publication \_\_\_\_\_

Sixth Publication \_\_\_\_\_

Seventh Publication \_\_\_\_\_

Eighth Publication \_\_\_\_\_

Subscribed and sworn before me this

4th day of December 2025

LATISHA ROMINE  
 Notary Public, State of New Mexico  
 Commission No. 1076338  
 My Commission Expires  
 05-12-2027



Latisha Romine

Notary Public, Eddy County, New Mexico

TO: ALL AFFECTED PARTIES, INCLUDING: Ellen M. Grooms, Trustee of the EMG Revocable Trust U/A/D 11/01/2004, New Mexico Military Institute, Chevron U.S.A. Inc, LJA Charitable Investments, LLC, 32 Minerals I BPEOR NM, LLC, 32 Minerals II BPEOR NM, LLC, BEPCO, L.P., BMT I BPEOR NM, LLC, BMT II BPEOR NM, LLC, CTV-LMB I BPEOR NM, LLC, CTV-LMB II BPEOR NM, LLC, CTV-SRB I BPEOR NM, LLC, CTV-SRB II BPEOR NM, LLC, Hyatt Anne Bass Management Trust, LMBI I BPEOR NM, LLC, LMBI II BPEOR NM, LLC, PRB II 1993C I BPEOR NM, LLC, PRB II 1993C II BPEOR NM, LLC, RFB 1993C I BPEOR NM, LLC, RFB 1993C II BPEOR NM, LLC, Samantha Simms Bass Management Trust, SRBI I BPEOR NM, LLC, SRBI II BPEOR NM, LLC, SSB 1993C I BPEOR NM, LLC, SSB 1993C II BPEOR NM, LLC, Thru Line BPEOR NM, LLC, CTAM O&G, LLC, GC O&G, LLC, Rolla R. Hinkle, III, "Bureau of Land Management ATTN: Jonathan Shepard", Devon Energy Production Company, L.P., Toles-Com-Ltd., Good Earth Minerals, LLC, Bureau of Land Management, Compound Properties, LLC, Matlock Minerals Ltd. Co., State of New Mexico Land Office, Santa Elena Minerals IV, LP, Madison M. Hinkle and Susan M. Hinkle Revocable Trust, Penasco Petroleum LLC, Hope Royalties, LLC, Mark McClellan and Paula McClellan, as joint tenants

Application of XTO Permian Operating, LLC for administrative approval to surface commingle (pool and lease) oil and gas production from leases comprised of Sections 8, 17, 18, 19, 20, 27, 28, 29, 30, 31, 32, 33 and 34, Township 25 South, Range 30 East, NMPM, AND Sections 3, 4, and 10, Township 26 North, Range 30 East, NMPM, Eddy County, New Mexico (the Lands)

XTO Permian Operating, LLC (OGRID No. 373075) (XTO), pursuant to 19.15.12.10 NMAC, seeks administrative approval to surface commingle (pool and lease) diversely owned oil and gas production at the Poker Lake Unit 27 BD CVB, (CVB) insofar as all existing and future wells drilled in the following pools and leases:

(a) The 7,682.62-acre, more or less, Wolfcamp PA"D" (NMNM 105723198) comprised of:

Township 25 South, Range 30 East, NMPM

Section 08: E2NE, E2SW, SE

Section 17: All

Section 18: Lots 3 & 4, E2SW, E2

Section 19: All

Section 20: All

Section 27: S2

Section 28: All

Section 29: All

Section 30: NE, E2SE

Section 31: E2NE

Section 32: All

Section 33: All

Section 34: All

Township 26 South, Range 30 East, N.M.P.M.

Section 03: All

Section 04: NE

Section 10: N2

And includes production from the PURPLE SAGE; WOLFCAMP (GAS) [98220] pool drilled to the following wells:

API	Well Name	Number
30-015-46245	POKER LAKE UNIT 27 BD	102H
30-015-46291	POKER LAKE UNIT 27 BD	103H
30-015-46292	POKER LAKE UNIT 27 BD	104H
30-015-46261	POKER LAKE UNIT 27 BD	105H
30-015-46264	POKER LAKE UNIT 27 BD	121H
30-015-46265	POKER LAKE UNIT 27 BD	122H
30-015-46290	POKER LAKE UNIT 27 BD	124H
30-015-46266	POKER LAKE UNIT 27 BD	125H
30-015-46255	POKER LAKE UNIT 27 BD	126H
30-015-46436	POKER LAKE UNIT 27 BD	128H
30-015-46257	POKER LAKE UNIT 27 BD	152H
30-015-46254	POKER LAKE UNIT 27 BD	154H
30-015-46259	POKER LAKE UNIT 27 BD	158H
30-015-46249	POKER LAKE UNIT 27 BD	161H
30-015-46247	POKER LAKE UNIT 27 BD	163H
30-015-46260	POKER LAKE UNIT 27 BD	165H
30-015-46258	POKER LAKE UNIT 27 BD	167H

(b) Federal Leases: NMNM105445072, NMNM105552170, NMNM105317154, NMNM105441981, NMNM105554641, and NMNM105316634, consisting of the S/2 of Section 27 and all of Section 34, Township 25 North, Range 30 East and all of Section 3 and the N/2 of Section 10, Township 26 North, Range 30 East,

drilled to the WILDCAT G-015 S2630010; BONE SPRING [97814] pool and consisting of the following wells:

API	Well Name	Number
30-015-56506	POKER LAKE UNIT 27 BD	509H
30-015-56507	POKER LAKE UNIT 27 BD	510H
300-15-56491	POKER LAKE UNIT 27 BD	511H
30-015-56497	POKER LAKE UNIT 27 BD	512H
30-015-56492	POKER LAKE UNIT 27 BD	609H
30-015-56508	POKER LAKE UNIT 27 BD	610H
30-015-56363	POKER LAKE UNIT 27 BD	611H
30-015-56490	POKER LAKE UNIT 27 BD	612H

(c) Pursuant to 19.15.12.10.C(4)(g), from all future additions of pools, leases or leases and pools to the Poker Lake Unit 27 BD CVB (CVB) with notice provided only to the owners of interests to be added.

Any objection to this application must be filed in writing within twenty (20) days from the date of publication with the New Mexico Oil Conservation Division, 1220 South St. Francis Drive, Santa Fe, New Mexico, 87505. If no objection is received within this twenty-day period, this application may be approved administratively by the Division. If you have any questions about this application, please contact Russell Young, XTO Energy, Inc., (832)-454-2857 or Russell.young@exxonmobil.com.

74920-Published in Carlsbad Current Argus Dec. 4, 2025

**STATE OF NEW MEXICO  
ENERGY, MINERALS AND NATURAL RESOURCES DEPARTMENT  
OIL CONSERVATION DIVISION**

**APPLICATION FOR SURFACE COMMINGLING  
SUBMITTED BY XTO PERMIAN OPERATING, LLC**

**ORDER NO. PLC-1064**

**ORDER**

The Director of the New Mexico Oil Conservation Division (“OCD”), having considered the application and the recommendation of the OCD Engineering Bureau, issues the following Order.

**FINDINGS OF FACT**

1. XTO Permian Operating, LLC (“Applicant”) submitted a complete application to surface commingle the oil and gas production from the pools, leases, and wells as described in Exhibit A (“Application”).
2. Applicant proposed a method to allocate the oil and gas production to the pools, leases, and wells to be commingled.
3. Applicant provided notice of the Application to all persons owning an interest in the oil and gas production to be commingled, including the owners of royalty and overriding royalty interests, regardless of whether they have a right or option to take their interests in kind, and those persons either submitted a written waiver or did not file an objection to the Application.
4. Applicant provided notice of the Application to the Bureau of Land Management (“BLM”) or New Mexico State Land Office (“NMSLO”), as applicable.
5. Applicant certified the commingling of oil and gas production from the pools, leases, and wells will not in reasonable probability reduce the value of the oil and gas production to less than if it had remained segregated.
6. Applicant in the notice for the Application stated that it sought authorization to prospectively include additional pools, leases, and wells in accordance with 19.15.12.10 C.(4)(g) NMAC.
7. Applicant stated that it sought authorization to surface commingle and off-lease measure, as applicable, oil and gas production from wells which have not yet been approved to be drilled, but will produce from a pool and lease as described in Exhibit A.

**CONCLUSIONS OF LAW**

8. OCD has jurisdiction to issue this Order pursuant to the Oil and Gas Act, NMSA 1978, §§ 70-2-6, 70-2-11, 70-2-12, 70-2-16, and 70-2-17, 19.15.12. NMAC, and 19.15.23. NMAC.
9. Applicant satisfied the notice requirements for the Application in accordance with 19.15.12.10 A.(2) NMAC, 19.15.12.10 C.(4)(c) NMAC, and 19.15.12.10 C.(4)(e) NMAC, as applicable.



10. Applicant satisfied the notice requirements for the Application in accordance with 19.15.23.9 A.(5) NMAC and 19.15.23.9 A.(6) NMAC, as applicable.
11. Applicant's proposed method of allocation, as modified herein, complies with 19.15.12.10 B.(1) NMAC or 19.15.12.10 C.(1) NMAC, as applicable.
12. Commingling of oil and gas production from state, federal, or tribal leases shall not commence until approved by the BLM or NMSLO, as applicable, in accordance with 19.15.12.10 B.(3) NMAC and 19.15.12.10 C.(4)(h) NMAC.
13. Applicant satisfied the notice requirements for the subsequent addition of pools, leases, and wells in the notice for the Application, in accordance with 19.15.12.10 C.(4)(g) NMAC. Subsequent additions of pools, leases, and wells within Applicant's defined parameters, as modified herein, will not, in reasonable probability, reduce the commingled production's value or otherwise adversely affect the interest owners in the production to be added.
14. By granting the Application with the conditions specified below, this Order prevents waste and protects correlative rights, public health, and the environment.

### **ORDER**

1. Applicant is authorized to surface commingle oil and gas production from the pools, leases, and wells as described in Exhibit A.

Applicant is authorized to store and measure oil and gas production off-lease from the pools, leases, and wells as described in Exhibit A at a central tank battery or gas title transfer meter described in Exhibit A.

Applicant is authorized to surface commingle oil and gas production from wells not included in Exhibit A but that produce from a pool and lease as described in Exhibit A.

Applicant is authorized to store and measure oil and gas production off-lease from wells not included in Exhibit A but that produce from a pool and lease as described in Exhibit A at a central tank battery or gas title transfer meter described in Exhibit A.

2. The allocation of oil and gas production to wells not included in Exhibit A but that produce from a pool and lease as described in Exhibit A shall be determined in the same manner as to wells identified in Exhibit A that produce from that pool and lease, provided that if more than one allocation method is being used or if there are no wells identified in Exhibit A that produce from the pool and lease, then allocation of oil and gas production to each well not included in Exhibit A shall be determined by OCD prior to commingling production from it with the production from another well.
3. The allocation of oil and gas production shall be based on the production life of each well as measured for three periods: (a) the initial production period shall be measured from the first production until the earlier of either the peak production rate or thirty (30) days after the first production; (b) the plateau period shall be measured from the end of the initial production

period to the peak decline rate; and (c) the decline period shall be measured from the end of the plateau period until the well is plugged and abandoned.

During the initial production period, the oil and gas production for each well identified in Exhibit A shall be allocated using a production curve calculated from a minimum of ten (10) well tests per month, except that any day in which a well test cannot achieve an accurate result due to a temporary change in oil and gas production shall not be included in the computation of time determining the well test schedule. The production curve shall be calculated by interpolating daily production for each day using the known daily production obtained by well tests and shall use a method of interpolation that is at minimum as accurate as maintaining a constant rate of change for each day's production between the known daily production values.

During the plateau period, the oil and gas production for each well identified in Exhibit A shall be allocated using a minimum of three (3) well tests per month.

During the decline period, the oil and gas production for each well identified in Exhibit A shall be allocated as follows: (a) a minimum of three (3) well tests per month when the decline rate is greater than twenty-two percent (22%) per month; (b) a minimum of two (2) well tests per month when the decline rate is between twenty-two percent (22%) and ten percent (10%) per month; and (c) a minimum of one (1) well test per month when the decline rate is less than ten percent (10%) per month.

Upon OCD's request, Applicant shall submit a Form C-103 to the OCD Engineering Bureau that contains the decline rate curve and other relevant information demonstrating the production life of a well.

Applicant shall conduct a well test by separating and metering the oil and gas production from that well for either (a) a minimum of twenty-four (24) consecutive hours; or (b) a combination of nonconsecutive periods that meet the following conditions: (i) each period shall be a minimum of six (6) hours; and (ii) the total duration of the nonconsecutive periods shall be a minimum of eighteen (18) hours.

The well test requirements of this Order shall be suspended for any well shut-in for a period that continues for more than fifteen (15) days until the well commences production.

4. Applicant shall measure and market the commingled oil at a central tank battery described in Exhibit A in accordance with this Order and 19.15.18.15. NMAC or 19.15.23.8. NMAC.
5. Applicant shall measure and market the commingled gas at a well pad, central delivery point, central tank battery, or gas title transfer meter described in Exhibit A in accordance with this Order and 19.15.19.9. NMAC, provided however that if the gas is vented or flared, and regardless of the reason or authorization pursuant to 19.15.28.8 B. NMAC for such venting or flaring, Applicant shall measure or estimate the gas in accordance with 19.15.28.8 E. NMAC.

6. Applicant shall calibrate the meters used to measure or allocate oil and gas production in accordance with 19.15.12.10 C.(2) NMAC.
7. If the commingling of oil and gas production from any pool, lease, or well reduces the value of the commingled oil and gas production to less than if it had remained segregated, no later than sixty (60) days after the decrease in value has occurred Applicant shall submit a new surface commingling application to OCD to amend this Order to remove the pool, lease, or well whose oil and gas production caused the decrease in value. If Applicant fails to submit a new application, this Order shall terminate on the following day, and if OCD denies the application, this Order shall terminate on the date of such action.
8. Applicant may submit an application to amend this Order to add pools, leases, and subsequently drilled wells with spacing units adjacent to or within the tracts commingled by this Order by submitting a Form C-107-B in accordance with 19.15.12.10 C.(4)(g) NMAC, provided the pools, leases, and subsequently drilled wells are within the identified parameters included in the Application.
9. If a well is not included in Exhibit A but produces from a pool and lease as described in Exhibit A, then Applicant shall submit Forms C-102 and C-103 to the OCD Engineering Bureau after the well has been approved to be drilled and prior to off-lease measuring or commingling oil or gas production from it with the production from another well. The Form C-103 shall reference this Order and identify the well, proposed method to determine the allocation of oil and gas production to it, and the location(s) that commingling of its production will occur.
10. Applicant shall not commence commingling oil or gas production from state, federal, or tribal leases until approved by the BLM or NMSLO, as applicable.
11. If OCD determines that Applicant has failed to comply with any provision of this Order, OCD may take any action authorized by the Oil and Gas Act or the New Mexico Administrative Code (NMAC).
12. OCD retains jurisdiction of this matter and reserves the right to modify or revoke this Order as it deems necessary.

**STATE OF NEW MEXICO  
OIL CONSERVATION DIVISION**



**ALBERT C. S. CHANG  
DIRECTOR**

**DATE:** 12/20/2025

State of New Mexico  
Energy, Minerals and Natural Resources Department

## Exhibit A

Order: **PLC-1064**

Operator: **XTO Permian Operating, LLC (373075)**

Central Tank Battery: **Poker Lake Unit 27 BD Central Vessel Battery**

Central Tank Battery Location: **UL L, M, Section 27, Township 25 South, Range 30**

Gas Title Transfer Meter Location: **UL L, M, Section 27, Township 25 South, Range 30**

### Pools

Pool Name	Pool Code
<b>WILDCAT G-015 S263001O;BONE SPRING</b>	<b>97814</b>
<b>PURPLE SAGE;WOLFCAMP (GAS)</b>	<b>98220</b>

### Leases as defined in 19.15.12.7(C) NMAC

Lease	UL or Q/Q	S-T-R
<b>PA Wolfcamp NMNM 105723198 (071016AT)</b>	<b>E2NE, E2SW, SE4</b>	<b>08-25S-30E</b>
	<b>ALL</b>	<b>17-25S-30E</b>
	<b>SW4, E2</b>	<b>18-25S-30E</b>
	<b>ALL</b>	<b>19-25S-30E</b>
	<b>ALL</b>	<b>20-25S-30E</b>
	<b>S2</b>	<b>27-25S-30E</b>
	<b>ALL</b>	<b>28-25S-30E</b>
	<b>ALL</b>	<b>29-25S-30E</b>
	<b>NE4, E2SE</b>	<b>30-25S-30E</b>
	<b>E2NE</b>	<b>31-25S-30E</b>
	<b>ALL</b>	<b>32-25S-30E</b>
	<b>ALL</b>	<b>33-25S-30E</b>
	<b>ALL</b>	<b>34-25S-30E</b>
	<b>ALL</b>	<b>03-26S-30E</b>
	<b>NE4</b>	<b>04-26S-30E</b>
	<b>N2</b>	<b>10-26S-30E</b>
<b>BLM Lease NMNM 105445072 (NMLC 0063875A)</b>	<b>N2, SW4</b>	<b>27-25S-30E</b>
<b>BLM Lease NMNM 105552170 (NMLC 0063875)</b>	<b>SE4</b>	<b>27-25S-30E</b>
<b>BLM Lease NMNM 105317154 (0005039A)</b>	<b>N2, SW4</b>	<b>34-25S-30E</b>
<b>BLM Lease NMNM 105441981 (0005039)</b>	<b>SE4</b>	<b>34-25S-30E</b>
<b>BLM Lease NMNM 105554641 (NMLC 0069513A)</b>	<b>ALL</b>	<b>03-26S-30E</b>
<b>BLM Lease NMNM 105316634 (NMLC 0069513)</b>	<b>N2</b>	<b>10-26S-30E</b>

### Wells

Well API	Well Name	UL or Q/Q	S-T-R	Pool
<b>30-015-46245</b>	<b>POKER LAKE UNIT 27 BD #102H</b>	<b>SW4</b>	<b>27-25S-30E</b>	<b>98220</b>
		<b>W2</b>	<b>34-25S-30E</b>	
		<b>W2</b>	<b>03-26S-30E</b>	
		<b>NW4</b>	<b>10-26S-30E</b>	



30-015-46291	POKER LAKE UNIT 27 BD #103H	SW4 W2 W2 NW4	27-25S-30E 34-25S-30E 03-26S-30E 10-26S-30E	98220
30-015-46292	POKER LAKE UNIT 27 BD #104H	SW4 W2 W2 NW4	27-25S-30E 34-25S-30E 03-26S-30E 10-26S-30E	98220
30-015-46261	POKER LAKE UNIT 27 BD #105H	SE4 E2	27-25S-30E 34-25S-30E	98220
30-015-46264	POKER LAKE UNIT 27 BD #121H	SW4 W2 W2 NW4	27-25S-30E 34-25S-30E 03-26S-30E 10-26S-30E	98220
30-015-46265	POKER LAKE UNIT 27 BD #122H	SW4 W2 W2 NW4	27-25S-30E 34-25S-30E 03-26S-30E 10-26S-30E	98220
30-015-46290	POKER LAKE UNIT 27 BD #124H	SW4 W2 W2 NW4	27-25S-30E 34-25S-30E 03-26S-30E 10-26S-30E	98220
30-015-46266	POKER LAKE UNIT 27 BD #125H	SE4 E2	27-25S-30E 34-25S-30E	98220
30-015-46255	POKER LAKE UNIT 27 BD #126H	SE4 E2	27-25S-30E 34-25S-30E	98220
30-015-46436	POKER LAKE UNIT 27 BD #128H	SE4 E2	27-25S-30E 34-25S-30E	98220
30-015-46257	POKER LAKE UNIT 27 BD #152H	SW4 W2 W2 NW4	27-25S-30E 34-25S-30E 03-26S-30E 10-26S-30E	98220
30-015-46254	POKER LAKE UNIT 27 BD #154H	SW4 W2 W2 NW4	27-25S-30E 34-25S-30E 03-26S-30E 10-26S-30E	98220
30-015-46259	POKER LAKE UNIT 27 BD #158H	SE4 E2	27-25S-30E 34-25S-30E	98220
30-015-46249	POKER LAKE UNIT 27 BD #161H	SW4 W2 W2 NW4	27-25S-30E 34-25S-30E 03-26S-30E 10-26S-30E	98220
30-015-46247	POKER LAKE UNIT 27 BD #163H	SW4 W2 W2 NW4	27-25S-30E 34-25S-30E 03-26S-30E 10-26S-30E	98220
30-015-46260	POKER LAKE UNIT 27 BD #165H	SE4 E2	27-25S-30E 34-25S-30E	98220

30-015-46258	POKER LAKE UNIT 27 BD #167H	SE4 E2	27-25S-30E 34-25S-30E	98220
30-015-56506	POKER LAKE UNIT 27 BD #509H	W2SW W2W2 W2W2 W2NW	27-25S-30E 34-25S-30E 03-26S-30E 10-26S-30E	97814
30-015-56507	POKER LAKE UNIT 27 BD #510H	W2SW W2W2 W2W2 W2NW	27-25S-30E 34-25S-30E 03-26S-30E 10-26S-30E	97814
30-015-56491	POKER LAKE UNIT 27 BD #511H	E2SW E2W2 E2W2 E2NW	27-25S-30E 34-25S-30E 03-26S-30E 10-26S-30E	97814
30-015-56497	POKER LAKE UNIT 27 BD #512H	E2SW E2W2 E2W2 E2NW	27-25S-30E 34-25S-30E 03-26S-30E 10-26S-30E	97814
30-015-56492	POKER LAKE UNIT 27 BD #609H	W2SE W2E2 W2E2 W2NE	27-25S-30E 34-25S-30E 03-26S-30E 10-26S-30E	97814
30-015-56508	POKER LAKE UNIT 27 BD #610H	W2SE W2E2 W2E2 W2NE	27-25S-30E 34-25S-30E 03-26S-30E 10-26S-30E	97814
30-015-56363	POKER LAKE UNIT 27 BD #611H	E2SE E2E2 E2E2 E2NE	27-25S-30E 34-25S-30E 03-26S-30E 10-26S-30E	97814
30-015-56490	POKER LAKE UNIT 27 BD #612H	E2SE E2E2 E2E2 E2NE	27-25S-30E 34-25S-30E 03-26S-30E 10-26S-30E	97814

Sante Fe Main Office  
Phone: (505) 476-3441

General Information  
Phone: (505) 629-6116

Online Phone Directory  
<https://www.emnrd.nm.gov/ocd/contact-us>

State of New Mexico  
Energy, Minerals and Natural Resources  
Oil Conservation Division  
1220 S. St Francis Dr.  
Santa Fe, NM 87505

CONDITIONS

Action 529222

CONDITIONS

Operator:  XTO PERMIAN OPERATING LLC. 6401 HOLIDAY HILL ROAD MIDLAND, TX 79707	OGRID:  373075
	Action Number:  529222
	Action Type:  [C-107] Surface Commingle or Off-Lease (C-107B)

CONDITIONS

Created By	Condition	Condition Date
sarah.clelland	Please review the content of the order to ensure you are familiar with the authorities granted and any conditions of approval. If you have any questions regarding this matter, please email us at <a href="mailto:OCD.Engineer@emnrd.nm.gov">OCD.Engineer@emnrd.nm.gov</a> .	12/23/2025