

State of New Mexico
Energy, Minerals and Natural Resources Department

Michelle Lujan-Grisham
Governor

Erin Taylor
Acting Cabinet Secretary

Ben Shelton
Deputy Secretary

Albert C.S. Chang
Division Director
Oil Conservation Division



ADMINISTRATIVE NON-STANDARD SPACING UNIT

Jacob Everhart
jeverhart@bwenergy.com

Administrative Order NSP – 2373

XTO Permian Operating, LLC [OGRID 373075]

Poker Lake Unit 15 27 BD Well No. 302H (API No. 30-015-PENDING)

Poker Lake Unit 15 27 BD Well No. 701H (API No. 30-015-PENDING)

Poker Lake Unit 15 27 BD Well No. 702H (API No. 30-015-PENDING)

Poker Lake Unit 15 27 BD Well No. 703H (API No. 30-015-PENDING)

Poker Lake Unit 15 27 BD Well No. 704H (API No. 30-015-PENDING)

Poker Lake Unit 15 34 BD Well No. 305H (API No. 30-015-PENDING)

Poker Lake Unit 15 34 BD Well No. 306H (API No. 30-015-PENDING)

HSU: Section 15, Section 22 and N/2 Section 27, T23S, R30E, Eddy County

Reference is made to your application received on February 25th, 2026.

You have requested approval of a non-standard horizontal spacing unit to be included in your proposed horizontal spacing unit, as follows:

Proposed Horizontal Spacing Unit:

Description	Acres	Pool	Pool Code
All of Section 15	1600	Corral Canyon; Bone Spring, South	13354
All of Section 22			
N/2 Section 27			

NSP - 2373
XTO Permian Operating, LLC
Page 2 of 2

You have requested an exception pursuant to Rule 19.15.16.15(A)(3) NMAC, to approve a non-standard horizontal spacing unit consisting of the entire area described above as the horizontal spacing unit. The proposed horizontal spacing unit does not consist of a quarter - quarter section or equivalent in both sections, as required by Rule 19.15.16.15(B)(1) NMAC.

We understand that you are seeking this exception for an allowance to create a non-standard horizontal spacing unit, comprised of the Proposed Horizontal Spacing Unit referenced above within Eddy County, New Mexico.

The Division understands you have given notice of this application to all operators or owners who are "affected persons," as defined in Paragraph (8) Subsection A of 19.15.2.7 NMAC, in all adjoining units which are to be being included.

You have requested this non-standard horizontal spacing unit to allow for efficient surface facility placement, to reduce surface disturbance and to enhance recovery within the proposed total Horizontal Spacing Unit; all of Section 15, all of Section 22, and the N/2 Section 27 underlying the Bone Spring formation.

Pursuant to the authority conferred by Division Rule 19.15.16.15(B)(5) NMAC, the above-described **non-standard horizontal spacing unit is hereby approved**. Further, the Applicant may add additional wells to the non-standard spacing unit, the well(s) must be in the same horizontal spacing unit and pool/formation. The new well's APD shall reference this NSP order number on Form C-102 with an adjacent letter stating this request.

General Provisions

The above approvals are subject to your being in compliance with all other applicable Division rules, including, but not limited to Division Rule 19.15.5.9 NMAC.

Jurisdiction of this case is retained for the entry of such further orders as the Division may deem necessary.



Albert C.S. Chang
Division Director
AC/lrl

Date: 4/3/26

ID NO. 557653

NSP - 2373

Revised March 23, 2017

RECEIVED: 02/25/26	REVIEWER:	TYPE:	APP NO:
---------------------------	-----------	-------	---------

ABOVE THIS TABLE FOR OCD DIVISION USE ONLY

NEW MEXICO OIL CONSERVATION DIVISION
 - Geological & Engineering Bureau -
 1220 South St. Francis Drive, Santa Fe, NM 87505



ADMINISTRATIVE APPLICATION CHECKLIST

THIS CHECKLIST IS MANDATORY FOR ALL ADMINISTRATIVE APPLICATIONS FOR EXCEPTIONS TO DIVISION RULES AND REGULATIONS WHICH REQUIRE PROCESSING AT THE DIVISION LEVEL IN SANTA FE

Applicant: XTO Permian Operating, LLC **OGRID Number:** 373075
Well Name: Poker Lake Unit 15-27 & 15-34 **API:** Various - See Attached C-102s
Pool: CORRAL CANYON; BONE SPRING, SOUTH **Pool Code:** 13354

SUBMIT ACCURATE AND COMPLETE INFORMATION REQUIRED TO PROCESS THE TYPE OF APPLICATION INDICATED BELOW

- 1) **TYPE OF APPLICATION:** Check those which apply for [A]
 A. Location – Spacing Unit – Simultaneous Dedication
 NSL NSP (PROJECT AREA) NSP (PRORATION UNIT) SD
- B. Check one only for [I] or [II]
 [I] Commingling – Storage – Measurement
 DHC CTB PLC PC OLS OLM
 [II] Injection – Disposal – Pressure Increase – Enhanced Oil Recovery
 WFX PMX SWD IPI EOR PPR

- 2) **NOTIFICATION REQUIRED TO:** Check those which apply.
 A. Offset operators or lease holders
 B. Royalty, overriding royalty owners, revenue owners
 C. Application requires published notice
 D. Notification and/or concurrent approval by SLO
 E. Notification and/or concurrent approval by BLM
 F. Surface owner
 G. For all of the above, proof of notification or publication is attached, and/or,
 H. No notice required

FOR OCD ONLY	
<input type="checkbox"/>	Notice Complete
<input type="checkbox"/>	Application Content Complete

3) **CERTIFICATION:** I hereby certify that the information submitted with this application for administrative approval is **accurate** and **complete** to the best of my knowledge. I also understand that **no action** will be taken on this application until the required information and notifications are submitted to the Division.

Note: Statement must be completed by an individual with managerial and/or supervisory capacity.

Jacob Everhart

Print or Type Name

Signature

2/5/2026
Date

(505) 999 - 0401
Phone Number

jeverhart@bwenergyllaw.com
e-mail Address

BEATTY & WOZNIAK, P.C.

ATTORNEYS AT LAW
1675 BROADWAY, SUITE 600
DENVER, COLORADO 80202
TELEPHONE 303-407-4499
FAX 1-800-886-6566
www.bwenergylaw.com

OFFICE LOCATIONS

COLORADO
NEW MEXICO
WYOMING

MIGUEL A. SUAZO
ALSO ADMITTED IN TX, CO

JACOB L. EVERHART
ALSO ADMITTED IN CO, ND, & UT

February 25, 2026

VIA ONLINE FILING

Albert Chang
Division Director
Oil Conservation Division
Energy, Minerals and Natural Resource Department
1220 South Saint Francis Drive
Santa Fe, New Mexico 87505

ATTN: Leonard Lowe

RE: Application of XTO Permian Operating, LLC, for Administrative Approval of 1,600-acre Non-Standard Horizontal Spacing Unit (NSP)

Poker Lake Unit 15-27 BD & 15-34 BD
Sections 15 and 22, and the N/2 of Section 27, Township 25 South, Range 30 East,
N.M.P.M., Eddy County, New Mexico
Corral Canyon; Bone Spring, South [Pool Code: 13354]

Dear Mr. Chang,

XTO Permian Operating, LLC (“XTO”), (OGRID No. 373075), pursuant to Division rules 19.15.16.15.(B)(5) and 19.15.15.11.B. NMAC, seeks administrative approval of a Non-Standard Horizontal Spacing Unit (“NSP”) for its Poker Lake Unit 15-27 BD and 15-34 BD well(s) located in a 1,600-acre, more or less, spacing unit underlying all of Sections 15 and 22, and the N/2 of Section 27, Township 25 South, Range 30 East, N.M.P.M. Eddy County, NM.

Reason for the Request: The proposed NSP is unorthodox in size and acreage under both 19.15.15.11.B.(1) and 19.15.16.15(B)(1) NMAC. The NSP well(s) dedicate 1,600 acres, which is more than the 40-acre (quarter-quarter) spacing unit building blocks provided under 19.15.16.15.B(1). The NSP is located within the Poker Lake Federal Exploratory Unit. XTO is the unit operator.

Notice is provided under 19.15.16.15.B.(5)(b)(ii) NMAC to affected persons in all tracts that *adjoin the non-standard horizontal spacing unit.*

The proposed 1,600-acre Non-Standard Spacing Unit will be developed by the following well(s):

- **Poker Lake Unit 15-27 BD 302H** (API No. 30-015-*Pending*)
 - Well Type: Infill
 - Pool Name: Corral Canyon; Bone Spring, South
 - Pool Code: [13354]
- **Poker Lake Unit 15-27 BD 701H** (API No. 30-015-*Pending*)
 - Well Type: Defining
 - Pool Name: Corral Canyon; Bone Spring, South
 - Pool Code: [13354]
- **Poker Lake Unit 15-27 BD 702H** (API No. 30-015-*Pending*)
 - Well Type: Infill
 - Pool Name: Corral Canyon; Bone Spring, South
 - Pool Code: [13354]
- **Poker Lake Unit 15-27 BD 703H** (API No. 30-015-*Pending*)
 - Well Type: Infill
 - Pool Name: Corral Canyon; Bone Spring, South
 - Pool Code: [13354]
- **Poker Lake Unit 15-27 BD 704H** (API No. 30-015-*Pending*)
 - Well Type: Infill
 - Pool Name: Corral Canyon; Bone Spring, South
 - Pool Code: [13354]
- **Poker Lake Unit 15-34 BD 305H** (API No. 30-015-*Pending*)
 - Well Type: Infill
 - Pool Name: Corral Canyon; Bone Spring, South
 - Pool Code: [13354]
- **Poker Lake Unit 15-34 BD 306H** (API No. 30-015-*Pending*)
 - Well Type: Infill
 - Pool Name: Corral Canyon; Bone Spring, South
 - Pool Code: [13354]

The Division has placed the well(s) listed above in the Corral Canyon; Bone Spring, South Pool [No. 13354] which provides for 40-acre spacing, comprised of one or more contiguous tracts that the horizontal oil well's completed interval penetrates, each of which consists of a governmental quarter-quarter section or equivalent. 19.15.16.15.B.(1)(a) NMAC.

The acreage included in the Non-Standard Spacing Unit will be subject to the following leases:

- NMLC0063873A, NMLC0063873, NMLC0063875A, NMLC0063875

XTO seeks administrative approval of a Non-Standard Spacing Unit to develop the acreage as a single development area and to maximize the productive lateral. Doing so allows XTO to efficiently locate surface facilities, such as well pad locations and centralized tank batteries, reduce disturbance impacts, reduce emissions and leak points, consolidate roadways, reduce traffic, consolidate pipeline(s), and promotes effective well spacing, thereby ensuring the promotion of conservation, the prevention of waste, and the protection of correlative rights. Division rules 19.15.16.7.P and 19.15.16.15.B(8) NMAC encourage oil and gas development, where possible, in enlarged areas of common ownership to minimize surface disturbance and to promote efficient well spacing. Further, Division rule 19.15.16.15.(B)(5) NMAC authorizes administrative approval of such a request.

Please find the below listed Exhibits included in this application:

Exhibit 1 is a statement from XTO Commercial & Land Advisor, Corie Mathews, CPL.

Exhibit 2 is a copy of the Well Location and Acreage Dedication Plat (C-102) for each well within the proposed Non-Standard Spacing Unit and includes the SHL, FTP, LTP, and BHL for each well.

Exhibit 3 includes: (1) a lease map showing the proposed Non-Standard Horizontal Spacing Unit, and the adjoining tracts identifying the notification area, (2) an example of a Standard Horizontal Spacing Unit, and (3) a map showing the entirety of the Poker Lake Federal Exploratory Unit.

Exhibit 4 is a list of affected persons under 19.15.16.15.B(5)(b)(ii) who were sent a copy of this application, proof of publication, and attachments by certified mail advising that any objections must be filed in writing with the Division within 20 days from the date the Division receives the application.

Thank you for your time and attention to this matter. Please let me know if you require additional information.

Very truly yours,

BEATTY & WOZNIAK, P.C.



Miguel Suazo
msuazo@bwenergylaw.com

Jacob L. Everhart
jeverhart@bwenergylaw.com
Attorney(s) for XTO Permian Operating, LLC

Exhibit 1



Land Dept. Loc. 115
22777 Springwoods Village Pkwy
Spring TX 77389-1425
346-335-5864 - Direct Phone
corie.a.mathews@ExxonMobil.com

February 24, 2026

Landman Statement

I have reviewed the ownership of the oil and gas leasehold in the proposed 1,600-acre, more or less, Non-Standard Horizontal Spacing Unit ("NSHSU") underlying all of Sections 15 and 22, the N/2 of Section 27, Township 25 South, Range 30 East, N.M.P.M. Eddy County, NM, for purposes of the administrative approval for XTO's **Poker Lake Unit 15-27BD and 15-34 BD well(s)**. As of the date of this letter, the affected parties are:

See Attached EXHIBIT "4"

XTO is seeking approval of the non-standard proration unit to eliminate the need for separate production facilities and additional administrative approvals. Approval of the NSHSU will allow for efficient surface facility placement, reduced surface disturbance, and the consolidation of roads, storage tanks, and pipelines. These measures support effective well spacing, conservation of the resource, enhanced recoveries and economics, and waste prevention, while also helping to minimize environmental impacts such as emissions from multiple tank batteries and associated facilities. The Oil Conservation Division's rules encourage such developments to maximize efficiency and reduce surface disturbance in areas of common ownership.

Sincerely,

XTO Permian Operating, LLC.

Corie A Mathews

Corie Mathews, CPL

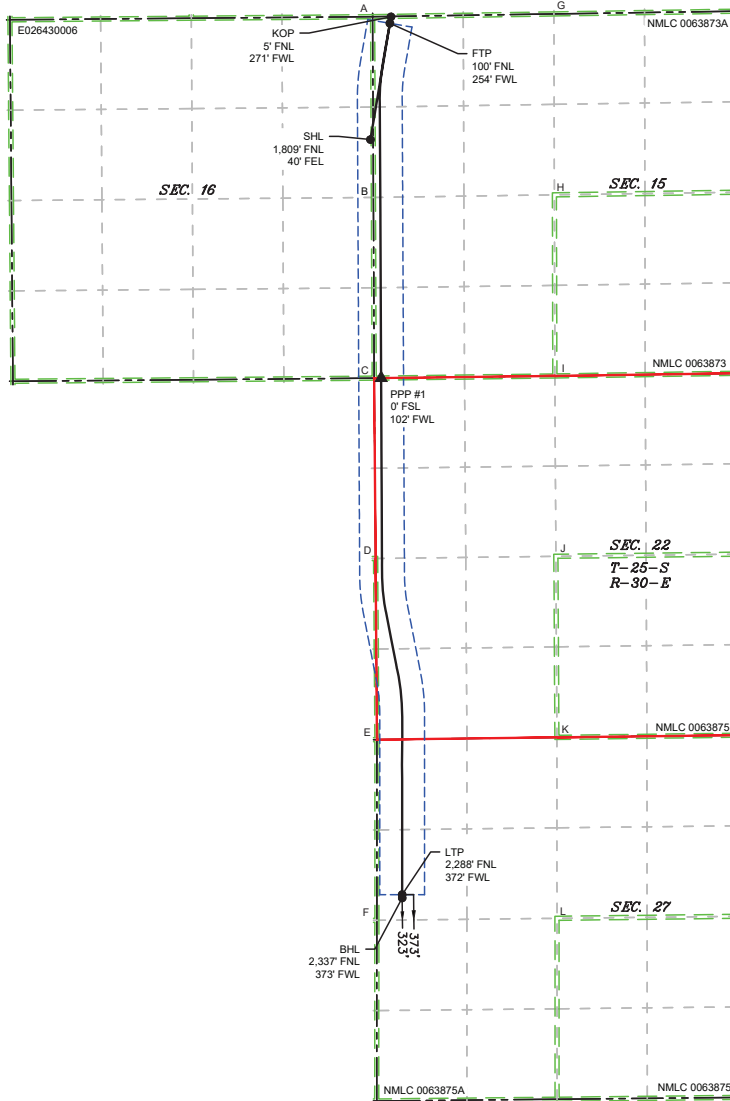
Commercial & Land Advisor – Delaware NM

Exhibit 2

ACREAGE DEDICATION PLATS

This grid represents a standard section. You may superimpose a non-standard section, or larger area, over this grid. Operators must outline the dedicated areage in a red box, clearly show the well surface location and bottom hole location, if it is directionally drilled, with the dimensions from the section lines in the cardinal directions. If this is a horizontal wellbore show on this plat the location of the First Take Point and Last Take Point, and the point within the completed interval (other than the First Take Point or Last Take Point) that is closest to any outer boundary of the tract.

Surveyors shall use the latest United States government survey or dependent resurvey. Well Locations will be in reference to the New Mexico Principal Meridian. If the land is not surveyed, contact the OCD Engineering Bureau. Independent subdivision surveys will not be accepted.



\\618-013-XTO Energy - NM\003-Poker Lake Unit\34 - PLU T5 Brushy Draw\Wells\18 - 302H\DWG\15-27 BD 302H C-102.dwg

LEGEND

- SECTION LINE
- TOWNSHIP LINE
- DEDICATED ACREAGE
- 330' BUFFER
- MINERAL LEASE
- WELL BORE
- ▲ PPP
- WELL

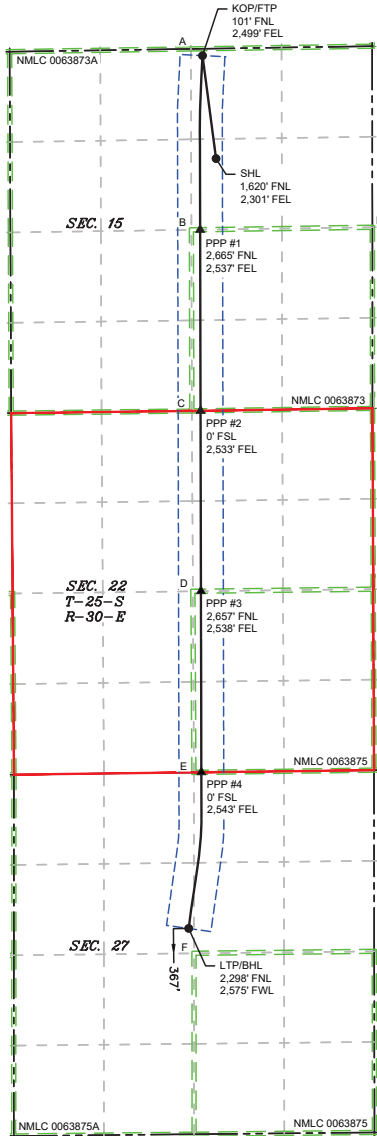
WELL COORDINATE TABLE								
WELL	NAD 83 NME X	NAD 83 NME Y	NAD 83 LAT	NAD 83 LON	NAD 27 NME X	NAD 27 NME Y	NAD 27 LAT	NAD 27 LON
SHL	682,369.4	412,312.6	32.132706	-103.877719	641,184.7	412,254.1	32.132581	-103.877236
KOP	682,672.0	414,120.8	32.137673	-103.876716	641,487.4	414,062.3	32.137548	-103.876233
FTP	682,655.5	414,025.4	32.137411	-103.876771	641,470.8	413,966.9	32.137286	-103.876288
LTP	682,836.6	401,190.3	32.102127	-103.876362	641,651.4	401,132.1	32.102002	-103.875880
BHL	682,837.0	401,140.8	32.101991	-103.876361	641,651.9	401,082.6	32.101866	-103.875880
PPP1	682,526.8	408,799.5	32.123047	-103.877258	641,341.9	408,741.1	32.122922	-103.876776

CORNER COORDINATE TABLE				
CORNER	NAD 83 NME X	NAD 83 NME Y	NAD 27 NME X	NAD 27 NME Y
A	682,401.5	414,121.6	641,216.8	414,063.0
B	682,412.8	411,459.6	641,228.0	411,401.1
C	682,424.4	408,798.2	641,239.5	408,739.8
D	682,445.5	406,142.3	641,260.5	406,083.9
E	682,465.3	403,473.7	641,280.2	403,415.4
F	682,464.0	400,813.6	641,278.8	400,755.4
G	685,071.9	414,162.6	643,887.3	414,104.3
H	685,078.9	411,497.8	643,894.1	411,439.5
I	685,085.8	408,830.4	643,900.8	408,772.2
J	685,100.9	406,174.0	643,915.8	406,115.9
K	685,116.0	403,507.4	643,930.8	403,449.4
L	685,117.3	400,842.9	643,932.0	400,784.9

ACREAGE DEDICATION PLATS

This grid represents a standard section. You may superimpose a non-standard section, or larger area, over this grid. Operators must outline the dedicated areage in a red box, clearly show the well surface location and bottom hole location, if it is directionally drilled, with the dimensions from the section lines in the cardinal directions. If this is a horizontal wellbore show on this plat the location of the First Take Point and Last Take Point, and the point within the completed interval (other than the First Take Point or Last Take Point) that is closest to any outer boundary of the tract.

Surveyors shall use the latest United States government survey or dependent resurvey. Well Locations will be in reference to the New Mexico Principal Meridian. If the land is not surveyed, contact the OCD Engineering Bureau. Independent subdivision surveys will not be accepted.



LEGEND

- SECTION LINE
- 330' BUFFER
- PPP
- TOWNSHIP LINE
- MINERAL LEASE
- WELL
- DEDICATED ACREAGE
- WELL BORE

WELL COORDINATE TABLE								
WELL	NAD 83 NME X	NAD 83 NME Y	NAD 83 LAT	NAD 83 LON	NAD 27 NME X	NAD 27 NME Y	NAD 27 LAT	NAD 27 LON
SHL	685,442.1	412,548.2	32.133318	-103.867789	644,257.4	412,489.8	32.133193	-103.867306
KOP/FTP	685,242.5	414,064.1	32.137487	-103.868413	644,057.9	414,005.8	32.137363	-103.867930
LTP/BHL	685,039.2	401,208.2	32.102150	-103.869249	643,854.0	401,150.2	32.102026	-103.868767
PPP1	685,207.7	411,499.6	32.130438	-103.868561	644,023.0	411,441.3	32.130314	-103.868078
PPP2	685,213.7	408,832.3	32.123106	-103.868579	644,028.7	408,774.1	32.122982	-103.868097
PPP3	685,219.5	406,175.5	32.115803	-103.868597	644,034.5	406,117.3	32.115678	-103.868115
PPP4	685,225.5	403,508.8	32.108472	-103.868615	644,040.3	403,450.7	32.108348	-103.868134

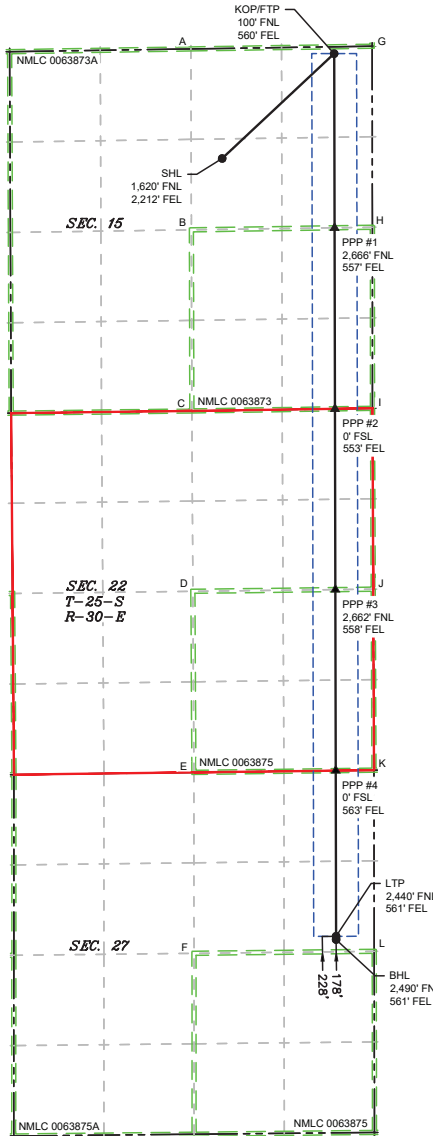
CORNER COORDINATE TABLE				
CORNER	NAD 83 NME X	NAD 83 NME Y	NAD 27 NME X	NAD 27 NME Y
A	685,071.9	414,162.6	643,887.3	414,104.3
B	685,078.9	411,497.8	643,894.1	411,439.5
C	685,085.8	408,830.4	643,900.8	408,772.2
D	685,100.9	406,174.0	643,915.8	406,115.9
E	685,116.0	403,507.4	643,930.8	403,449.4
F	685,117.3	400,842.9	643,932.0	400,784.9
G	687,742.3	414,202.1	646,557.7	414,143.7
H	687,744.7	411,535.9	646,559.9	411,477.7
I	687,746.5	408,869.7	646,561.5	408,811.5
J	687,757.3	406,205.8	646,572.1	406,147.7
K	687,768.3	403,539.7	646,583.1	403,481.7
L	687,772.0	400,872.2	646,586.7	400,814.2

\\618-013-XTO Energy - NM\003-Poker Lake Unit\34 - PLU 15 Brushy Draw\Wells\48 - 701H\DWG\15-27 BD 701H C-102.dwg

ACREAGE DEDICATION PLATS

This grid represents a standard section. You may superimpose a non-standard section, or larger area, over this grid. Operators must outline the dedicated acreage in a red box, clearly show the well surface location and bottom hole location, if it is directionally drilled, with the dimensions from the section lines in the cardinal directions. If this is a horizontal wellbore show on this plat the location of the First Take Point and Last Take Point, and the point within the completed interval (other than the First Take Point or Last Take Point) that is closest to any outer boundary of the tract.

Surveyors shall use the latest United States government survey or dependent resurvey. Well Locations will be in reference to the New Mexico Principal Meridian. If the land is not surveyed, contact the OCD Engineering Bureau. Independent subdivision surveys will not be accepted.



LEGEND

- SECTION LINE
- 330' BUFFER
- TOWNSHIP LINE
- MINERAL LEASE
- DEDICATED ACREAGE
- WELL BORE
- ▲ PPP
- WELL

WELL COORDINATE TABLE								
WELL	NAD 83 NME X	NAD 83 NME Y	NAD 83 LAT	NAD 83 LON	NAD 27 NME X	NAD 27 NME Y	NAD 27 LAT	NAD 27 LON
SHL	685,532.1	412,549.5	32.133320	-103.867498	644,347.4	412,491.2	32.133196	-103.867016
KOP/FTP	687,181.9	414,093.9	32.137546	-103.862147	645,997.2	414,035.6	32.137422	-103.861664
LTP	687,210.7	401,092.7	32.101807	-103.862237	646,025.4	401,034.8	32.101683	-103.861757
BHL	687,210.8	401,043.1	32.101671	-103.862238	646,025.6	400,985.1	32.101546	-103.861757
PPP1	687,187.6	411,528.0	32.130492	-103.862165	646,002.8	411,469.7	32.130368	-103.861682
PPP2	687,193.5	408,861.5	32.123163	-103.862183	646,008.5	408,803.3	32.123038	-103.861702
PPP3	687,199.4	406,199.2	32.115844	-103.862202	646,014.3	406,141.0	32.115720	-103.861720
PPP4	687,205.3	403,532.9	32.108515	-103.862220	646,020.1	403,474.8	32.108390	-103.861739

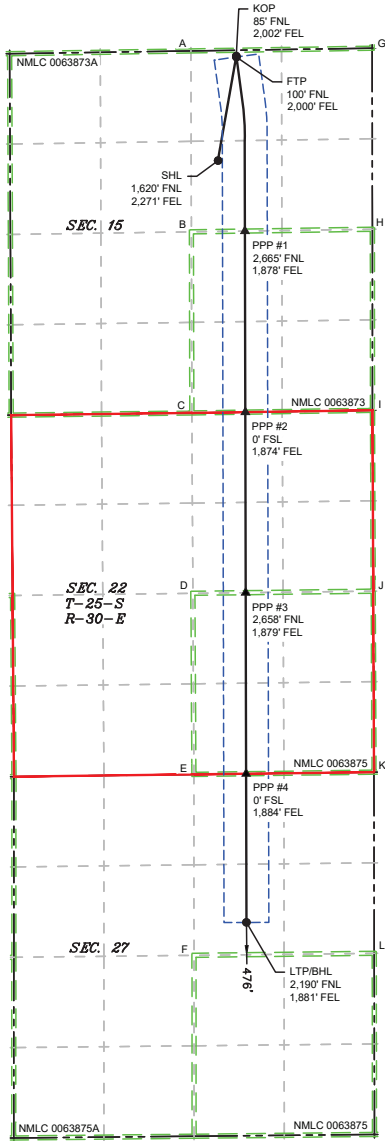
CORNER COORDINATE TABLE				
CORNER	NAD 83 NME X	NAD 83 NME Y	NAD 27 NME X	NAD 27 NME Y
A	685,071.9	414,162.6	643,887.3	414,104.3
B	685,078.9	411,497.8	643,894.1	411,439.5
C	685,085.8	408,830.4	643,900.8	408,772.2
D	685,100.9	406,174.0	643,915.8	406,115.9
E	685,116.0	403,507.4	643,930.8	403,449.4
F	685,117.3	400,842.9	643,932.0	400,784.9
G	687,742.3	414,202.1	646,557.7	414,143.7
H	687,744.7	411,535.9	646,559.9	411,477.7
I	687,746.5	408,869.7	646,561.5	408,811.5
J	687,757.3	406,205.8	646,572.1	406,147.7
K	687,768.3	403,539.7	646,583.1	403,481.7
L	687,772.0	400,872.2	646,586.7	400,814.2

\\618-013\XT0_Energy - NM\003_Poker_Lake_Unit_V34 - PLU T5 Brushy Draw\Wells\--68 - 704H\DWG\15-27 BD 704H C-102.dwg

ACREAGE DEDICATION PLATS

This grid represents a standard section. You may superimpose a non-standard section, or larger area, over this grid. Operators must outline the dedicated acreage in a red box, clearly show the well surface location and bottom hole location, if it is directionally drilled, with the dimensions from the section lines in the cardinal directions. If this is a horizontal wellbore show on this plat the location of the First Take Point and Last Take Point, and the point within the completed interval (other than the First Take Point or Last Take Point) that is closest to any outer boundary of the tract.

Surveyors shall use the latest United States government survey or dependent resurvey. Well Locations will be in reference to the New Mexico Principal Meridian. If the land is not surveyed, contact the OCD Engineering Bureau. Independent subdivision surveys will not be accepted.



LEGEND

- SECTION LINE
- TOWNSHIP LINE
- DEDICATED ACREAGE
- 330' BUFFER
- MINERAL LEASE
- WELL BORE
- ▲ PPP
- WELL

WELL COORDINATE TABLE								
WELL	NAD 83 NME X	NAD 83 NME Y	NAD 83 LAT	NAD 83 LON	NAD 27 NME X	NAD 27 NME Y	NAD 27 LAT	NAD 27 LON
SHL	685,472.1	412,548.6	32.133319	-103.867692	644,287.4	412,490.3	32.133194	-103.867209
KOP	685,740.4	414,087.5	32.137546	-103.866804	644,555.7	414,029.2	32.137421	-103.866321
FTP	685,742.4	414,072.5	32.137504	-103.866798	644,557.8	414,014.2	32.137380	-103.866315
LTP/BHL	685,889.6	401,326.5	32.102466	-103.866501	644,704.3	401,268.5	32.102341	-103.866020
PPP1	685,867.0	411,509.1	32.130456	-103.866431	644,682.2	411,450.8	32.130332	-103.865948
PPP2	685,872.9	408,842.1	32.123125	-103.866449	644,687.9	408,783.9	32.123001	-103.865967
PPP3	685,878.8	406,183.4	32.115817	-103.866468	644,693.7	406,125.2	32.115692	-103.865986
PPP4	685,884.7	403,516.8	32.108486	-103.866486	644,699.5	403,468.7	32.108362	-103.866004

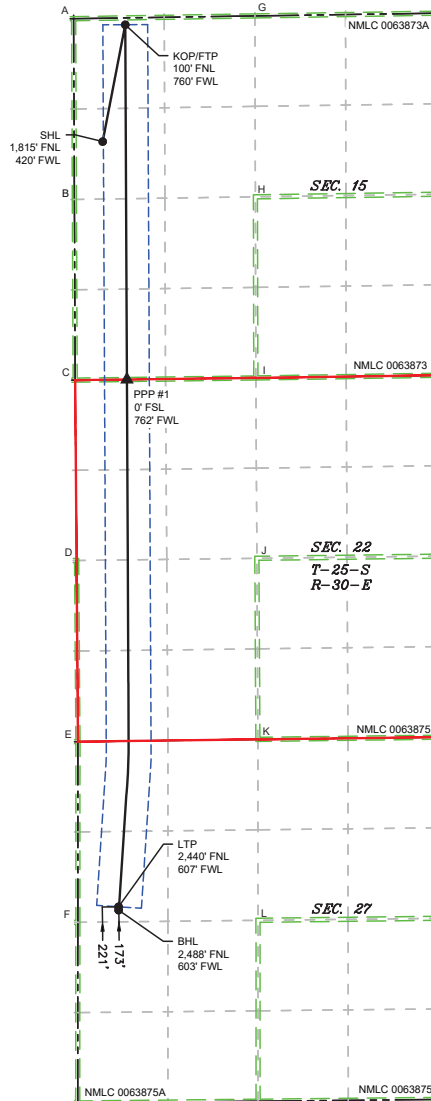
CORNER COORDINATE TABLE				
CORNER	NAD 83 NME X	NAD 83 NME Y	NAD 27 NME X	NAD 27 NME Y
A	685,071.9	414,162.6	643,887.3	414,104.3
B	685,078.9	411,497.8	643,894.1	411,439.5
C	685,085.8	408,830.4	643,900.8	408,772.2
D	685,100.9	406,174.0	643,915.8	406,115.9
E	685,116.0	403,507.4	643,930.8	403,449.4
F	685,117.3	400,842.9	643,932.0	400,784.9
G	687,742.3	414,202.1	646,557.7	414,143.7
H	687,744.7	411,535.9	646,559.9	411,477.7
I	687,746.5	408,869.7	646,561.5	408,811.5
J	687,757.3	406,205.8	646,572.1	406,147.7
K	687,768.3	403,539.7	646,583.1	403,481.7
L	687,772.0	400,872.2	646,586.7	400,814.2

\\618-013-XTO Energy - NM\003-Poker Lake Unit\34 - PLU T5 Brushy Draw\Wells\49 - 702H\DWG\15-27 BD 702H C-102.dwg

ACREAGE DEDICATION PLATS

This grid represents a standard section. You may superimpose a non-standard section, or larger area, over this grid. Operators must outline the dedicated acreage in a red box, clearly show the well surface location and bottom hole location, if it is directionally drilled, with the dimensions from the section lines in the cardinal directions. If this is a horizontal wellbore show on this plat the location of the First Take Point and Last Take Point, and the point within the completed interval (other than the First Take Point or Last Take Point) that is closest to any outer boundary of the tract.

Surveyors shall use the latest United States government survey or dependent resurvey. Well Locations will be in reference to the New Mexico Principal Meridian. If the land is not surveyed, contact the OCD Engineering Bureau. Independent subdivision surveys will not be accepted.



\\618-013-XTO Energy - NM\003-Poker Lake Unit\34 - PLU 15 Brushy Draw\Wells\21 - 305H\DWG\15-34 BD 305H C-102.dwg

LEGEND

- SECTION LINE
- 330' BUFFER
- MINERAL LEASE
- DEDICATED ACREAGE
- TOWNSHIP LINE
- WELL BORE
- ▲ PPP
- WELL

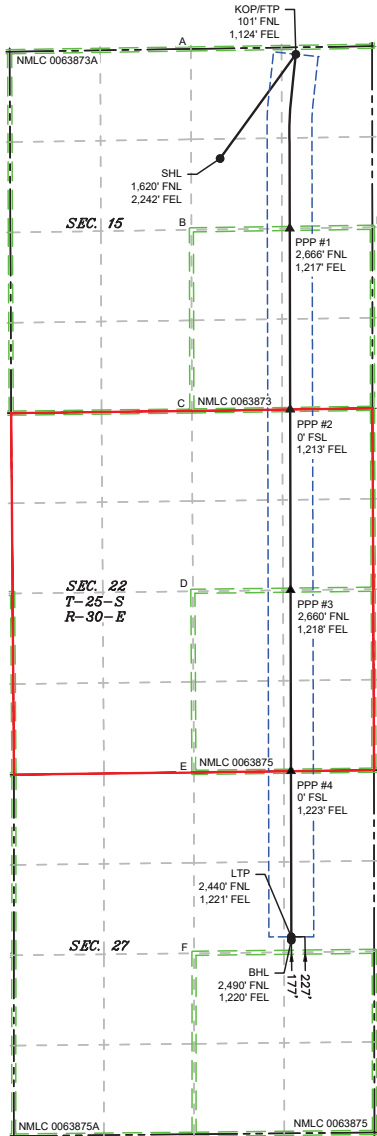
WELL COORDINATE TABLE								
WELL	NAD 83 NME X	NAD 83 NME Y	NAD 83 LAT	NAD 83 LON	NAD 27 NME X	NAD 27 NME Y	NAD 27 LAT	NAD 27 LON
SHL	682,829.4	412,312.7	32.132701	-103.876233	641,644.7	412,254.1	32.132576	-103.875750
KOP/FTP	683,161.9	414,033.2	32.137427	-103.875135	641,977.2	413,974.6	32.137302	-103.874652
LTP	683,070.7	401,041.2	32.101715	-103.875608	641,885.5	400,983.0	32.101590	-103.875126
BHL	683,067.5	400,992.7	32.101581	-103.875619	641,882.3	400,934.5	32.101456	-103.875137
PPP1	683,186.7	408,807.5	32.123062	-103.875127	642,001.8	408,749.0	32.122937	-103.874644

CORNER COORDINATE TABLE				
CORNER	NAD 83 NME X	NAD 83 NME Y	NAD 27 NME X	NAD 27 NME Y
A	682,401.5	414,121.6	641,216.8	414,063.0
B	682,412.8	411,459.6	641,228.0	411,401.1
C	682,424.4	408,798.2	641,239.5	408,739.8
D	682,445.5	406,142.3	641,260.5	406,083.9
E	682,465.3	403,473.7	641,280.2	403,415.4
F	682,464.0	400,813.6	641,278.8	400,755.4
G	685,071.9	414,162.6	643,887.3	414,104.3
H	685,078.9	411,497.8	643,894.1	411,439.5
I	685,085.8	408,830.4	643,900.8	408,772.2
J	685,100.9	406,174.0	643,915.8	406,115.9
K	685,116.0	403,507.4	643,930.8	403,449.4
L	685,117.3	400,842.9	643,932.0	400,784.9

ACREAGE DEDICATION PLATS

This grid represents a standard section. You may superimpose a non-standard section, or larger area, over this grid. Operators must outline the dedicated areage in a red box, clearly show the well surface location and bottom hole location, if it is directionally drilled, with the dimensions from the section lines in the cardinal directions. If this is a horizontal wellbore show on this plat the location of the First Take Point and Last Take Point, and the point within the completed interval (other than the First Take Point or Last Take Point) that is closest to any outer boundary of the tract.

Surveyors shall use the latest United States government survey or dependent resurvey. Well Locations will be in reference to the New Mexico Principal Meridian. If the land is not surveyed, contact the OCD Engineering Bureau. Independent subdivision surveys will not be accepted.



LEGEND

- SECTION LINE
- TOWNSHIP LINE
- DEDICATED ACREAGE
- 330' BUFFER
- MINERAL LEASE
- WELL BORE
- ▲ PPP
- WELL

WELL COORDINATE TABLE								
WELL	NAD 83 NME X	NAD 83 NME Y	NAD 83 LAT	NAD 83 LON	NAD 27 NME X	NAD 27 NME Y	NAD 27 LAT	NAD 27 LON
SHL	685,502.1	412,549.0	32.133319	-103.867595	644,317.4	412,490.7	32.133195	-103.867112
KOP/FTP	686,617.5	414,084.3	32.137526	-103.863970	645,432.8	414,025.9	32.137402	-103.863487
LTP	686,550.9	401,084.7	32.101793	-103.864369	645,365.6	401,026.7	32.101669	-103.863888
BHL	686,551.0	401,035.0	32.101657	-103.864369	645,365.7	400,977.1	32.101532	-103.863888
PPP1	686,527.7	411,518.5	32.130474	-103.864297	645,343.0	411,460.2	32.130350	-103.863814
PPP2	686,533.6	408,851.8	32.123144	-103.864315	645,348.6	408,793.6	32.123020	-103.863833
PPP3	686,539.5	406,191.3	32.115830	-103.864333	645,354.4	406,133.1	32.115706	-103.863852
PPP4	686,545.4	403,524.8	32.108501	-103.864352	645,360.3	403,466.8	32.108376	-103.863871

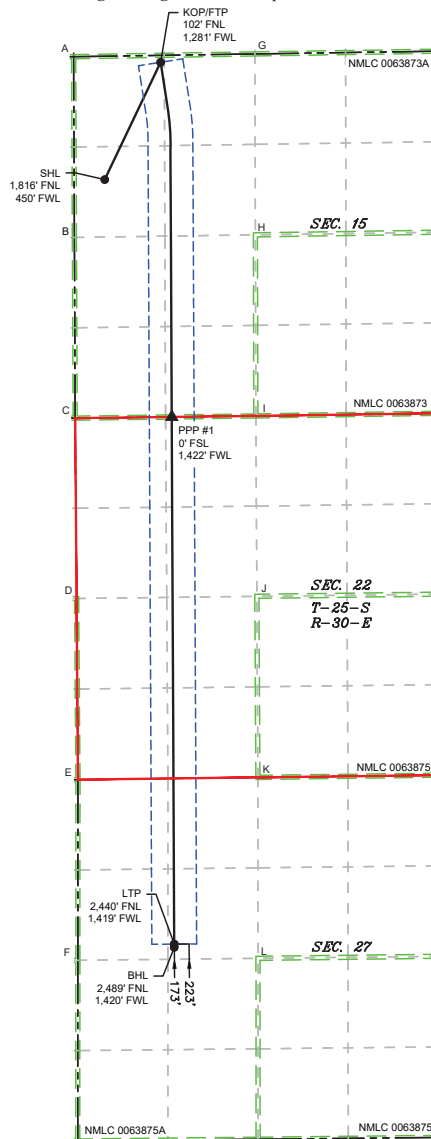
CORNER COORDINATE TABLE				
CORNER	NAD 83 NME X	NAD 83 NME Y	NAD 27 NME X	NAD 27 NME Y
A	685,071.9	414,162.6	643,887.3	414,104.3
B	685,078.9	411,497.8	643,894.1	411,439.5
C	685,085.8	408,830.4	643,900.8	408,772.2
D	685,100.9	406,174.0	643,915.8	406,115.9
E	685,116.0	403,507.4	643,930.8	403,449.4
F	685,117.3	400,842.9	643,932.0	400,784.9
G	687,742.3	414,202.1	646,557.7	414,143.7
H	687,744.7	411,535.9	646,559.9	411,477.7
I	687,746.5	408,869.7	646,561.5	408,811.5
J	687,757.3	406,205.8	646,572.1	406,147.7
K	687,768.3	403,539.7	646,583.1	403,481.7
L	687,772.0	400,872.2	646,586.7	400,814.2

\618:013\XTO Energy - NM\003\oker Lake Unit\34 - PLU T5 Brushy Draw\Wells\--50 - 703H\DWG\15--27 BD 703H C--102.dwg

ACREAGE DEDICATION PLATS

This grid represents a standard section. You may superimpose a non-standard section, or larger area, over this grid. Operators must outline the dedicated acreage in a red box, clearly show the well surface location and bottom hole location, if it is directionally drilled, with the dimensions from the section lines in the cardinal directions. If this is a horizontal wellbore show on this plat the location of the First Take Point and Last Take Point, and the point within the completed interval (other than the First Take Point or Last Take Point) that is closest to any outer boundary of the tract.

Surveyors shall use the latest United States government survey or dependent resurvey. Well Locations will be in reference to the New Mexico Principal Meridian. If the land is not surveyed, contact the OCD Engineering Bureau. Independent subdivision surveys will not be accepted.



LEGEND

- SECTION LINE
- 330' BUFFER
- PPP
- TOWNSHIP LINE
- MINERAL LEASE
- WELL
- DEDICATED ACREAGE
- WELL BORE

WELL COORDINATE TABLE								
WELL	NAD 83 NME X	NAD 83 NME Y	NAD 83 LAT	NAD 83 LON	NAD 27 NME X	NAD 27 NME Y	NAD 27 LAT	NAD 27 LON
SHL	682,859.4	412,312.7	32.132701	-103.876136	641,674.7	412,254.1	32.132576	-103.875653
KOP/FTP	683,683.0	414,039.4	32.137438	-103.873451	642,498.4	413,981.0	32.137313	-103.872968
LTP	683,883.6	401,051.6	32.101734	-103.872983	642,698.3	400,993.5	32.101609	-103.872501
BHL	683,883.8	401,002.1	32.101597	-103.872983	642,698.6	400,944.1	32.101473	-103.872501
PPP1	683,846.7	408,815.5	32.123076	-103.872995	642,661.8	408,757.2	32.122951	-103.872512

CORNER COORDINATE TABLE				
CORNER	NAD 83 NME X	NAD 83 NME Y	NAD 27 NME X	NAD 27 NME Y
A	682,401.5	414,121.6	641,216.8	414,063.0
B	682,412.8	411,459.6	641,228.0	411,401.1
C	682,424.4	408,798.2	641,239.5	408,739.8
D	682,445.5	406,142.3	641,260.5	406,083.9
E	682,465.3	403,473.7	641,280.2	403,415.4
F	682,464.0	400,813.6	641,278.8	400,755.4
G	685,071.9	414,162.5	643,887.3	414,104.3
H	685,078.9	411,497.8	643,894.1	411,439.5
I	685,085.8	408,830.4	643,900.8	408,772.2
J	685,100.9	406,174.0	643,915.8	406,115.9
K	685,116.0	403,507.4	643,930.8	403,449.4
L	685,117.3	400,842.9	643,932.0	400,784.9

\618\013\XTO Energy - NM\003\oker Lake Unit\34 - PLU T5 Brushy Draw\Wells\--22 - 306H\DWG\15-34 BD 306H C--102.dwg

Exhibit 3

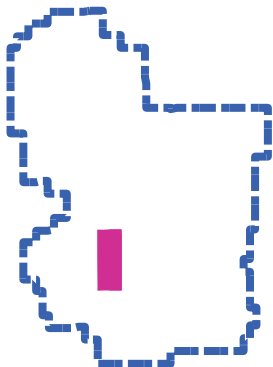
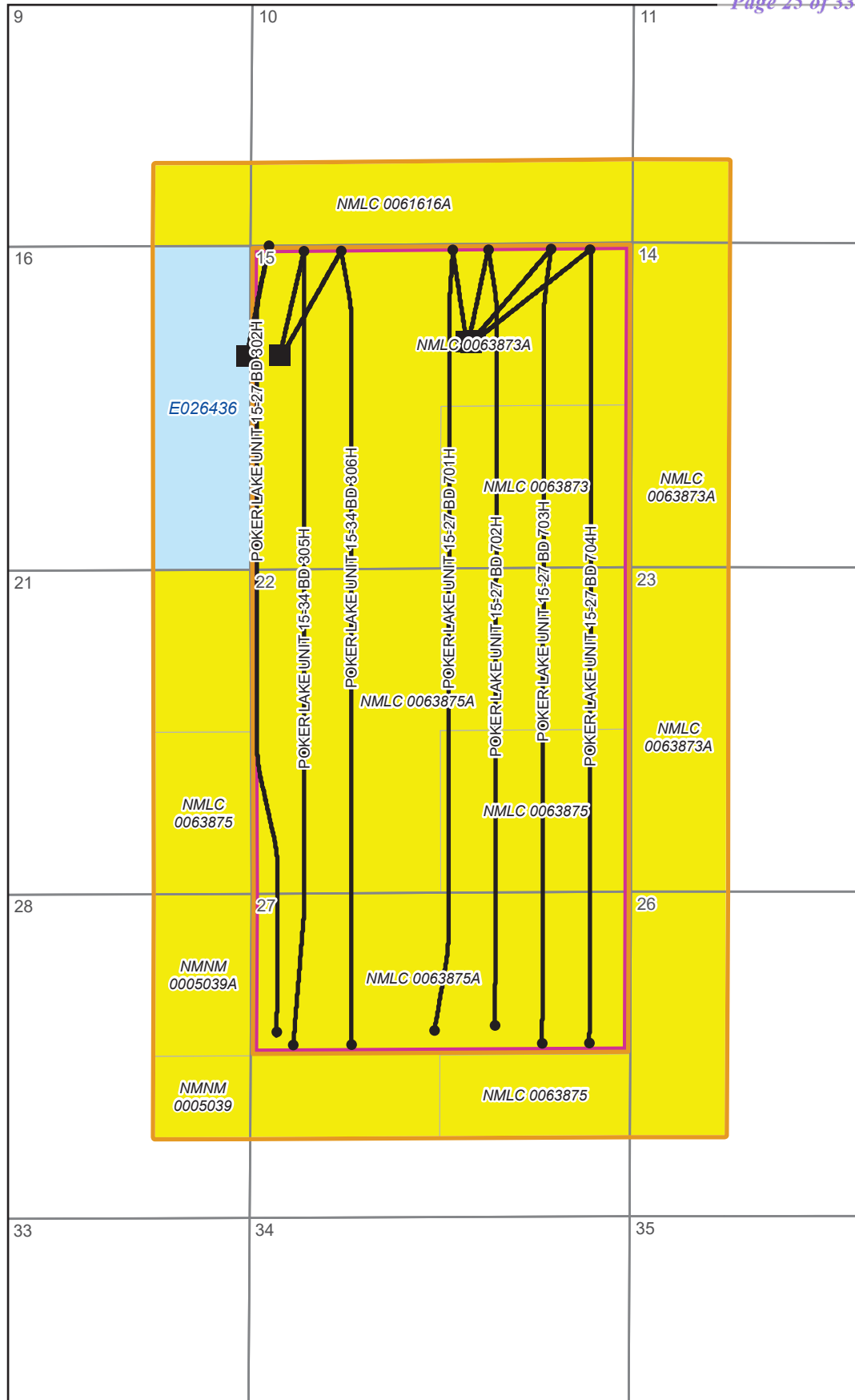


Poker Lake Unit 15-27 BD & Poker Lake Unit 15-34 BD NSL Exhibit Bone Spring Pool

Notification Area:

- Sec 9: SESE
- Sec 10: S2S2
- Sec. 11: SWSW
- Sec. 14: W2W2
- Sec. 16: E2E2
- Sec. 21: E2E2
- Sec. 23: W2W2
- Sec. 26: W2NW, NWSW
- Sec. 27: N2S2
- Sec. 28: E2NE, NESE

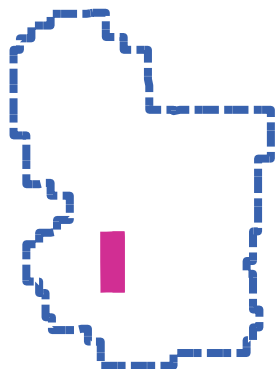
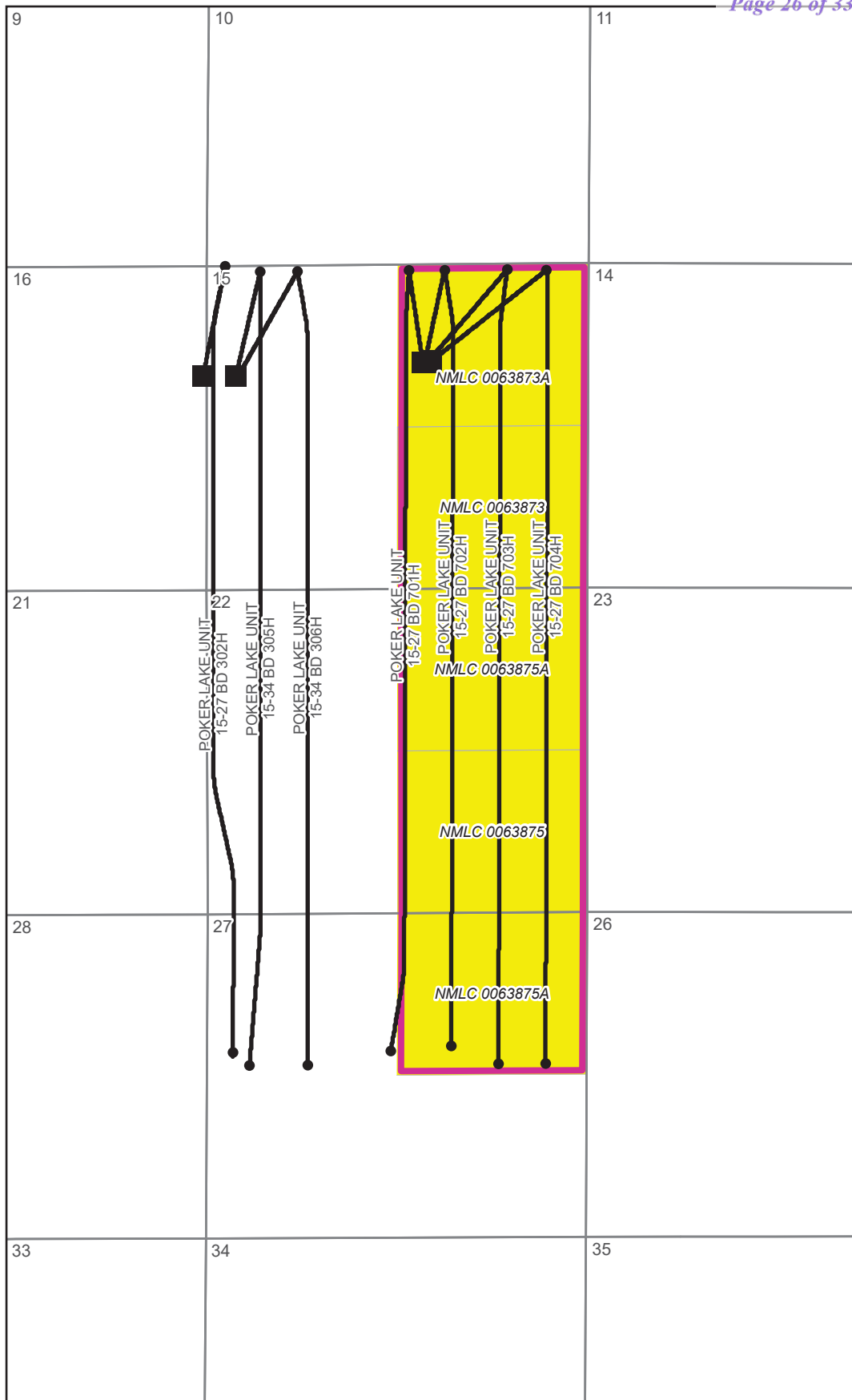
- Take Points
- Surface Holes
- Poker Lake Unit 15-27 BD & Poker Lane Unit 15-34 BD Wells
- Notification Area
- ▭ Non Standard Proposed Horizontal Spacing Unit (1,600 Acres)
- ▭ Poker Lake Federal Unit
- Federal Acreage
- State Acreage





Poker Lake Unit 15-27 BD & Poker Lake Unit 15-34 BD NSL Exhibit Bone Spring Pool

- Take Points
- Surface Holes
- Poker Lake Unit 15-27 BD & Poker Lane Unit 15-34 BD Wells
- ▭ Standard Horizontal Spacing Unit (800 Acres)
- ▭ Poker Lake Federal Unit
- Federal Acreage
- State Acreage





POKER LAKE UNIT EDDY COUNTY, NEW MEXICO

Land GIS Dept: O:\Arcview\Projects\Kelli\Project_APRX\Delaware Federal Unit PODs\Delaware Federal Unit PODs.aprx Layout: PLU LEASES

Date: 5/22/2025

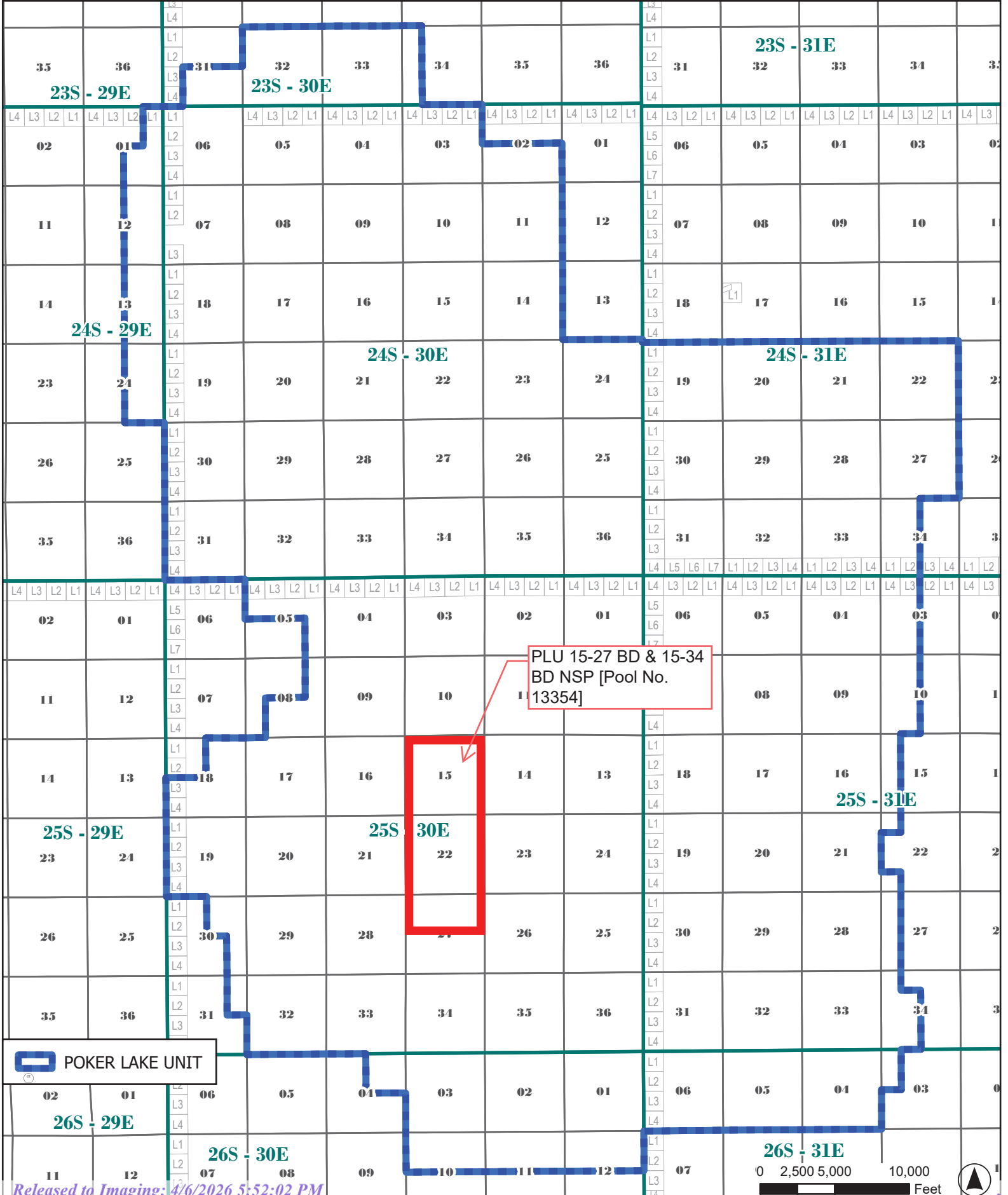


Exhibit 4

Operator	WI Owners	Acreage Type	Tracking
<p>XTO Delaware Basin, LLC</p> <p>6401 Holiday Hill Rd Bldg 5 Midland, TX 79707</p>	<p>Chevron U.S.A. Inc.</p> <p>ATTN: Land Dept., 6301 Deauville Blvd. Midland, TX 79706</p> <p>XTO Delaware Basin, LLC</p> <p>6401 Holiday Hill Rd Bldg 5 Midland, TX 79707</p>	<p>OP & WI</p>	<p>9589 0710 5270 2981 1389 91</p>
	<p>Bureau of Land Management</p> <p>620 E Green St. Carlsbad, NM 88220</p> <p>301 Dinosaur Trail Santa Fe, NM 87508</p>	<p>Federal</p>	<p>9589 0710 5270 2981 1389 84</p>
	<p>New Mexico State Land Office (SLO)</p> <p>310 Old Santa Fe Trail Santa Fe, NM 87501 (physical)</p> <p>PO Box 1148 Santa Fe, NM 87504-1148 (Mailing)</p>	<p>State</p>	<p>9589 0710 5270 2981 1389 77</p>

BEATTY & WOZNIAK, P.C.

ATTORNEYS AT LAW
1675 BROADWAY, SUITE 600
DENVER, COLORADO 80202
TELEPHONE 303-407-4499
FAX 1-800-886-6566
www.bwenergylaw.com

OFFICE LOCATIONS

COLORADO
NEW MEXICO
WYOMING

MIGUEL A. SUAZO
ALSO ADMITTED IN TX, CO

JACOB L. EVERHART
ALSO ADMITTED IN CO, ND, & UT

February 25, 2026

VIA CERTIFIED MAIL
RETURN RECEIPT REQUESTED

TO: ALL AFFECTED PERSONS

RE: Application of XTO Permian Operating, LLC, for Administrative Approval of 1,600-acre Non-Standard Horizontal Spacing Unit (NSP) in the Corral Canyon; Bone Spring, South [Pool Code: 13354] for the Poker Lake Fed Com Unit 15-27 BD and 15-34 BD wells dedicated to the lands comprised of all of Sections 15 and 22, and the N/2 of Section 27, Township 25 South, Range 30 East, N.M.P.M. Eddy County, NM

To Whom It May Concern,

Enclosed is a copy of the above-referenced application filed with the New Mexico Oil Conservation Division (the "Division") on this date. Any objections that you have to these applications must be filed in writing with the New Mexico Oil Conservation Division, 1220 South St. Francis Drive, Santa Fe, New Mexico, 87505, within twenty (20) days from the date the Division receives the above-referenced applications. If no objection is received within the twenty-day period, the application may be approved administratively by the Division.

This Application would have been filed with, and received by, the Division either on the date of this letter as referenced above, or no later than two (2) days after the date referenced above. Email correspondence for this matter can be sent to the Division at OCD.Engineer@emnrd.nm.gov. If you have any questions about this application, please contact the following:

Corie Mathews, CPL, Commercial & Land Advisor – Delaware Basin NM
ExxonMobil
(346) 335-5864
Corie.a.mathews@exxonmobil.com

Very truly yours,
BEATTY & WOZNIAK, P.C.

A handwritten signature in blue ink, appearing to read "Miguel A. Suazo".

Miguel A. Suazo
msuazo@bwenergylaw.com

Jacob L. Everhart
jeverhart@bwenergylaw.com

*Attorney(s) for XTO Permian Operating,
LLC*

Sante Fe Main Office
Phone: (505) 476-3441

General Information
Phone: (505) 629-6116

Online Phone Directory
<https://www.emnrd.nm.gov/ocd/contact-us>

State of New Mexico
Energy, Minerals and Natural Resources
Oil Conservation Division
1220 S. St Francis Dr.
Santa Fe, NM 87505

COMMENTS

Action 557653

COMMENTS

Operator: XTO PERMIAN OPERATING LLC. 3617 Big Spring St. MIDLAND, TX 79705	OGRID: 373075
	Action Number: 557653
	Action Type: [UF-NSP] Non-Standard Proration (NSP)

COMMENTS

Created By	Comment	Comment Date
llowe	If the Operator wants to add existing wells within the same NSP HSU, the operator will need to submit a C-103 X or Z to the OCD online portal. The sundry shall state the following: "Adding Wells to an NSP HSU: Well Name, Well API No., Pool Name, Pool Code, NSP Order Number". Send an email to ocd.engineer@emnrd.nm.gov . TITLED: Adding existing wells to NSP-XXXX, C-103 X or Z. NSP-XXXX.	4/6/2026

Sante Fe Main Office
Phone: (505) 476-3441

General Information
Phone: (505) 629-6116

Online Phone Directory
<https://www.emnrd.nm.gov/ocd/contact-us>

State of New Mexico
Energy, Minerals and Natural Resources
Oil Conservation Division
1220 S. St Francis Dr.
Santa Fe, NM 87505

CONDITIONS

Action 557653

CONDITIONS

Operator: XTO PERMIAN OPERATING LLC. 3617 Big Spring St. MIDLAND, TX 79705	OGRID: 373075
	Action Number: 557653
	Action Type: [UF-NSP] Non-Standard Proration (NSP)

CONDITIONS

Created By	Condition	Condition Date
llowe	This NSP order was approved with pending API wells. The owner of the NSP shall update the OCD when API number(s) are assigned to those pending APD well(s) by sending an e-mail to ocd.engineer@emnrd.nm.gov . TITLED: Updating NSP-XXX with API number(s) and associated Well Name.	4/6/2026