

RECEIVED:	REVIEWER:	TYPE:	APP NO:
-----------	-----------	-------	---------

ABOVE THIS TABLE FOR OCD DIVISION USE ONLY

NEW MEXICO OIL CONSERVATION DIVISION
 - Geological & Engineering Bureau -
 1220 South St. Francis Drive, Santa Fe, NM 87505



ADMINISTRATIVE APPLICATION CHECKLIST

THIS CHECKLIST IS MANDATORY FOR ALL ADMINISTRATIVE APPLICATIONS FOR EXCEPTIONS TO DIVISION RULES AND REGULATIONS WHICH REQUIRE PROCESSING AT THE DIVISION LEVEL IN SANTA FE

Applicant: _____ OGRID Number: _____
 Well Name: _____ API: _____
 Pool: _____ Pool Code: _____

SUBMIT ACCURATE AND COMPLETE INFORMATION REQUIRED TO PROCESS THE TYPE OF APPLICATION INDICATED BELOW

- 1) **TYPE OF APPLICATION:** Check those which apply for [A]
 A. Location – Spacing Unit – Simultaneous Dedication
 NSL NSP (PROJECT AREA) NSP (PRORATION UNIT) SD
- B. Check one only for [I] or [II]
 [I] Commingling – Storage – Measurement
 DHC CTB PLC PC OLS OLM
 [II] Injection – Disposal – Pressure Increase – Enhanced Oil Recovery
 WFX PMX SWD IPI EOR PPR

- 2) **NOTIFICATION REQUIRED TO:** Check those which apply.
 A. Offset operators or lease holders
 B. Royalty, overriding royalty owners, revenue owners
 C. Application requires published notice
 D. Notification and/or concurrent approval by SLO
 E. Notification and/or concurrent approval by BLM
 F. Surface owner
 G. For all of the above, proof of notification or publication is attached, and/or,
 H. No notice required

<u>FOR OCD ONLY</u>	
<input type="checkbox"/>	Notice Complete
<input type="checkbox"/>	Application Content Complete

3) **CERTIFICATION:** I hereby certify that the information submitted with this application for administrative approval is **accurate** and **complete** to the best of my knowledge. I also understand that **no action** will be taken on this application until the required information and notifications are submitted to the Division.

Note: Statement must be completed by an individual with managerial and/or supervisory capacity.

 Print or Type Name

Date

Resell Young

Phone Number

Signature

e-mail Address



March 12, 2026

VIA ONLINE FILING

Albert C.S. Chang, Division Director
Oil Conservation Division
New Mexico Department of Energy, Minerals and Natural Resources
1220 South Saint Francis Drive
Santa Fe, NM 87505

Re: Application of XTO Permian Operating, LLC for administrative approval to amend CTB-1120A and for administrative approval to surface commingle (pool and lease) oil and gas production from Sections 1, 12, 13, and 24, Township 24 South, Range 29 East, NMPM, Eddy County, New Mexico (the “Lands”)

Dear Mr. Chang:

XTO Permian Operating, LLC (OGRID No. 373075) (“XTO”), pursuant to 19.15.12.10 NMAC, seeks to amend Administrative Order CTB-1120A (“Order CTB-1120A”). Order CTB-1120A authorizes lease commingling, off-lease storage, off-lease measurement, and off-lease marketing at the **Poker Lake Unit 13 PC CVB (“Facility”)** *insofar as all existing and future wells committed to the following:*

See Exhibit A of Order CTB-1120A attached hereto as **Exhibit 1**.

Pursuant to 19.15.12.10 C.(4)(g), XTO seeks to amend the terms of Order CTB-1120A to add pools and wells with spacing units adjacent to the tracts commingled by Order CTB-1120A. The additional pools and wells are within the identified parameters included in the application. The additional pools and wells are as follows:

- (a) Federal Leases: NMNM105469353 and NMNM105443079, drilled to the PIERCE CROSSING; BONE SPRING, EAST [96473] pool in the S2 NE/4 and the SE/4 of Section 13 and the E/2 of Section 24, Township 24 South, Range 29 East and consisting of the following wells.

<u>API</u>	<u>Well Name</u>	<u>Number</u>
30-015-56753	POKER LAKE UNIT 13 1 PC	#507H
30-015-56743	POKER LAKE UNIT 13 1 PC	#705H
30-015-56744	POKER LAKE UNIT 13 1 PC	#707H
30-015-56745	POKER LAKE UNIT 13 1 PC	#708H
30-015-56746	POKER LAKE UNIT 13 1 PC	#805H
30-015-56747	POKER LAKE UNIT 13 1 PC	#806H

- (b) Federal Leases: NMNM105511730 and NMNM105469353, drilled to the CEDAR CANYON; BONE SPRING [11520], WILDCAT S243006B; LWR BONE SPRING [97753] and PIERCE CROSSING; BONE SPRING, EAST [96473] pools in the E/2 E/2 of Section 1,

XTO Permian Operating, LLC.
3617 North Big Spring Street
Midland, Texas 79705

An ExxonMobil Subsidiary

E/2 E/2 of Section 12, and the E/2 NE/4, NE/4 SE/4 of Section 13, Township 24 South, Range 29 East, and consisting of the following wells.

<u>API</u>	<u>Well Name</u>	<u>Number</u>
30-015-56749	POKER LAKE UNIT 13 24 PC #707H	
30-015-56750	POKER LAKE UNIT 13 24 PC #708H	
30-015-56752	POKER LAKE UNIT 13 24 PC #806H	

- (c) Federal Leases: NMNM105511730 and NMNM105469353, drilled to the CEDAR CANYON; BONE SPRING [11520], WILDCAT S243006B; LWR BONE SPRING [97753] and PIERCE CROSSING; BONE SPRING, EAST [96473] pools in the W/2 SE/4 of Section 1, W/2 E/2 of Section 12, and the W/2 NE/4 and NE/4 SE/4 of Section 13, Township 24 South, Range 29 East, and consisting of the following wells.

<u>API</u>	<u>Well Name</u>	<u>Number</u>
30-015-56748	POKER LAKE UNIT 13 24 PC #705H	
30-015-56749	POKER LAKE UNIT 13 24 PC #707H	
30-015-56750	POKER LAKE UNIT 13 24 PC #708H	
30-015-56751	POKER LAKE UNIT 13 24 PC #805H	
30-015-56752	POKER LAKE UNIT 13 24 PC #806H	

- (d) Pursuant to 19.15.12.10.C(4)(g), *from all future additions of pools, leases or leases and pools with notice provided only to the owners of interests to be added.*

Oil and gas production from these leases will be commingled and sold at the Facility, located ON the project area in the SW/4 NE/4 of Section 13, Township 24 South, Range 29 East. XTO plans to use the well test method for allocation of production and measurement purposes. Production will flow from the wellbore to either a test separator or bulk (common) production separator. The test separator will separate the gas, oil, and water. Gas production from the test separator will be metered with a calibrated orifice meter that is manufactured to AGA specifications. Oil production from the test separator will be metered using a Coriolis meter. Gas and oil production will then be allocated on a daily basis based on the most recent individual well tests of oil, gas and water.

Exhibit 2 is a plat showing the Facility site, well pads, well names, API numbers and leases in the subject area.

Exhibit 3 is a completed Application for Surface Commingling (Diverse Ownership) Form C-107B, that includes a statement from Steven D. Wolfe, Senior Facilities Engineer with XTO, explaining how XTO plans to utilize the well test method and the measurement devices to be utilized, along with a detailed schematic of the surface facilities (Attachment A to the statement).

Ownership is diverse between the above-described leases, each of which are either subject to a pooling agreement, unit agreement, or a pooling order and are therefore considered "leases" as defined by 19.15.12.7(C) NMAC. **Exhibit 4** is a list of the interest owners (including any owners of royalty or overriding royalty interests) affected by this application, an example of the letter sent by certified mail advising the interest owners that any objections must be filed in writing with the Division within 20 days from the date the Division receives this application, and proof of mailing. A copy of this application has been provided to the Bureau of Land Management since federal lands are involved.

Thank you for your consideration of this application. For questions concerning this application, please contact Heather Riley at heather.riley@exxonmobil.com or (432) 894-2025.

Sincerely,

Russell Young

Russell Young
New Mexico Commingle Manager
Unconventional, Upstream

XTO Permian Operating, LLC.
3617 North Big Spring Street
Midland, Texas 79705

An ExxonMobil Subsidiary

10. Applicant's proposed method of allocation, as modified herein, complies with 19.15.12.10 B.(1) NMAC or 19.15.12.10 C.(1) NMAC, as applicable.
11. Commingling of oil and gas production from state, federal, or tribal leases shall not commence until approved by the BLM or NMSLO, as applicable, in accordance with 19.15.12.10 B.(3) NMAC and 19.15.12.10 C.(4)(h) NMAC.
12. Applicant satisfied the notice requirements for the subsequent addition of pools, leases, and wells in the notice for the Application, in accordance with 19.15.12.10 C.(4)(g) NMAC. Subsequent additions of pools, leases, and wells within Applicant's defined parameters, as modified herein, will not, in reasonable probability, reduce the commingled production's value or otherwise adversely affect the interest owners in the production to be added.
13. By granting the Application with the conditions specified below, this Order prevents waste and protects correlative rights, public health, and the environment.

ORDER

1. Applicant is authorized to surface commingle oil and gas production from the pools, leases, and wells as described in Exhibit A.

Applicant is authorized to store and measure oil and gas production off-lease from the pools, leases, and wells as described in Exhibit A at a central tank battery or gas title transfer meter described in Exhibit A.

Applicant is authorized to surface commingle oil and gas production from wells not included in Exhibit A but that produce from a pool and lease as described in Exhibit A.

Applicant is authorized to store and measure oil and gas production off-lease from wells not included in Exhibit A but that produce from a pool and lease as described in Exhibit A at a central tank battery or gas title transfer meter described in Exhibit A.

2. This Order supersedes Order CTB-1120.
3. The allocation of oil and gas production to wells not included in Exhibit A but that produce from a pool and lease as described in Exhibit A shall be determined in the same manner as to wells identified in Exhibit A that produce from that pool and lease, provided that if more than one allocation method is being used or if there are no wells identified in Exhibit A that produce from the pool and lease, then allocation of oil and gas production to each well not included in Exhibit A shall be determined by OCD prior to commingling production from it with the production from another well.
4. The allocation of oil and gas production shall be based on the production life of each well as measured for three periods: (a) the initial production period shall be measured from the first production until the earlier of either the peak production rate or thirty (30) days after the first production; (b) the plateau period shall be measured from the end of the initial production period to the peak decline rate; and (c) the decline period shall be measured from the end of the plateau period until the well is plugged and abandoned.

During the initial production period, the oil and gas production for each well identified in Exhibit A shall be allocated using a production curve calculated from a minimum of ten (10) well tests per month, except that any day in which a well test cannot achieve an accurate result due to a temporary change in oil and gas production shall not be included in the computation of time determining the well test schedule. The production curve shall be calculated by interpolating daily production for each day using the known daily production obtained by well tests and shall use a method of interpolation that is at minimum as accurate as maintaining a constant rate of change for each day's production between the known daily production values.

During the plateau period, the oil and gas production for each well identified in Exhibit A shall be allocated using a minimum of three (3) well tests per month.

During the decline period, the oil and gas production for each well identified in Exhibit A shall be allocated as follows: (a) a minimum of three (3) well tests per month when the decline rate is greater than twenty-two percent (22%) per month; (b) a minimum of two (2) well tests per month when the decline rate is between twenty-two percent (22%) and ten percent (10%) per month; and (c) a minimum of one (1) well test per month when the decline rate is less than ten percent (10%) per month.

Upon OCD's request, Applicant shall submit a Form C-103 to the OCD Engineering Bureau that contains the decline rate curve and other relevant information demonstrating the production life of a well.

Applicant shall conduct a well test by separating and metering the oil and gas production from that well for either (a) a minimum of twenty-four (24) consecutive hours; or (b) a combination of nonconsecutive periods that meet the following conditions: (i) each period shall be a minimum of six (6) hours; and (ii) the total duration of the nonconsecutive periods shall be a minimum of eighteen (18) hours.

The well test requirements of this Order shall be suspended for any well shut-in for a period that continues for more than fifteen (15) days until the well commences production.

determined by separating and measuring the gas production from that well for a minimum of twenty-four (24) consecutive hours. Applicant shall conduct this test a minimum of one (1) time per month for each well.

The well test requirements of this Order shall be suspended for any well shut-in for a period that continues for more than thirty (30) days until the well commences production.

5. Applicant shall measure and market the commingled oil at a central tank battery described in Exhibit A in accordance with this Order and 19.15.18.15. NMAC or 19.15.23.8. NMAC.
6. Applicant shall measure and market the commingled gas at a well pad, central delivery point, central tank battery, or gas title transfer meter described in Exhibit A in accordance with this Order and 19.15.19.9. NMAC, provided however that if the gas is vented or flared, and regardless of the reason or authorization pursuant to 19.15.28.8 B. NMAC for such venting

or flaring, Applicant shall measure or estimate the gas in accordance with 19.15.28.8 E. NMAC.

7. Applicant shall calibrate the meters used to measure or allocate oil and gas production in accordance with 19.15.12.10 C.(2) NMAC.
8. If the commingling of oil and gas production from any pool, lease, or well reduces the value of the commingled oil and gas production to less than if it had remained segregated, no later than sixty (60) days after the decrease in value has occurred Applicant shall submit a new surface commingling application to OCD to amend this Order to remove the pool, lease, or well whose oil and gas production caused the decrease in value. If Applicant fails to submit a new application, this Order shall terminate on the following day, and if OCD denies the application, this Order shall terminate on the date of such action.
9. Applicant may submit an application to amend this Order to add pools, leases, and subsequently drilled wells with spacing units adjacent to or within the tracts commingled by this Order by submitting a Form C-107-B in accordance with 19.15.12.10 C.(4)(g) NMAC, provided the pools, leases, and subsequently drilled wells are within the identified parameters included in the Application.
10. If a well is not included in Exhibit A but produces from a pool and lease as described in Exhibit A, then Applicant shall submit Forms C-102 and C-103 to the OCD Engineering Bureau after the well has been approved to be drilled and prior to off-lease measuring or commingling oil or gas production from it with the production from another well. The Form C-103 shall reference this Order and identify the well, proposed method to determine the allocation of oil and gas production to it, and the location(s) that commingling of its production will occur.
11. Applicant shall not commence commingling oil or gas production from state, federal, or tribal leases until approved by the BLM or NMSLO, as applicable.
12. If OCD determines that Applicant has failed to comply with any provision of this Order, OCD may take any action authorized by the Oil and Gas Act or the New Mexico Administrative Code (NMAC).
13. OCD retains jurisdiction of this matter and reserves the right to modify or revoke this Order as it deems necessary.

**STATE OF NEW MEXICO
OIL CONSERVATION DIVISION**



**ALBERT CHANG
DIRECTOR**

DATE: 7/16/2025

State of New Mexico
Energy, Minerals and Natural Resources Department

Exhibit A

Order: CTB-1120-A
Operator: XTO Permian Operating, LLC (373075)
Central Tank Battery: Poker Lake Unit 13 PC Central Vessel Battery
Central Tank Battery Location: UL G, Section 13, Township 24 South, Range 29 East
Gas Title Transfer Meter Location: UL G, Section 13, Township 24 South, Range 29 East

Pools

Pool Name	Pool Code
PURPLE SAGE; WOLFCAMP (GAS)	98220

Leases as defined in 19.15.12.7(C) NMAC

Lease	UL or Q/Q	S-T-R
Poker Lake Exploratory Unit Agreement NMNM 105422429 (071016X)	E/2 NE/4, SE/4	1-24S-29E
	E/2	12-24S-29E
	E/2	13-24S-29E
	E/2	24-24S-29E
BLM Lease NMLC 105511730 (NMLC 0070175A)	E/2 NE/4, SE/4	1-24S-29E
	NE/4	12-24S-29E
BLM Lease NMNM 105469353 (0005912)	SE/4	12-24S-29E
	E/2	13-24S-29E
BLM Lease NMNM 105443079 (NMLC 0069005)	E/2	24-24S-29E

Wells

Well API	Well Name	UL or Q/Q	S-T-R	Pool
30-015-54010	Poker Lake Unit 13 1 PC #105H	E/2	13-24S-29E	98220
		E/2	24-24S-29E	
30-015-53565	Poker Lake Unit 13 1 PC #107H	E/2	13-24S-29E	98220
		E/2	24-24S-29E	
30-015-54012	Poker Lake Unit 13 1 PC #116H	E/2	13-24S-29E	98220
		E/2	24-24S-29E	
30-015-53563	Poker Lake Unit 13 1 PC #118H	E/2	13-24S-29E	98220
		E/2	24-24S-29E	
30-015-53562	Poker Lake Unit 13 1 PC #125H	E/2	13-24S-29E	98220
		E/2	24-24S-29E	
30-015-53554	Poker Lake Unit 13 1 PC #127H	E/2	13-24S-29E	98220
		E/2	24-24S-29E	
30-015-53560	Poker Lake Unit 13 1 PC #158H	E/2	13-24S-29E	98220
		E/2	24-24S-29E	
30-015-54013	Poker Lake Unit 13 1 PC #165H	E/2	13-24S-29E	98220
		E/2	24-24S-29E	
30-015-54014	Poker Lake Unit 13 1 PC #167H	E/2	13-24S-29E	98220
		E/2	24-24S-29E	

30-015-54359	Poker Lake Unit 13 24 PC #106H	SE/4	1-24S-29E	98220
		E/2	12-24S-29E	
		NE/4	13-24S-29E	
30-015-53557	Poker Lake Unit 13 24 PC #116H	SE/4	1-24S-29E	98220
		E/2	12-24S-29E	
		NE/4	13-24S-29E	
30-015-54358	Poker Lake Unit 13 24 PC #125H	SE/4	1-24S-29E	98220
		E/2	12-24S-29E	
		NE/4	13-24S-29E	
30-015-54357	Poker Lake Unit 13 24 PC #165H	SE/4	1-24S-29E	98220
		E/2	12-24S-29E	
		NE/4	13-24S-29E	
30-015-53558	Poker Lake Unit 13 24 PC #108H	SE/4	13-24S-29E	98220
		E/2	24-24S-29E	
		E/2 NE/4	1-24S-29E	
30-015-53556	Poker Lake Unit 13 24 PC #118H	E/2	12-24S-29E	98220
		NE/4	13-24S-29E	
		SE/4	13-24S-29E	
30-015-53553	Poker Lake Unit 13 24 PC #127H	E/2	24-24S-29E	98220
		E/2 NE/4, SE/4	1-24S-29E	
		E/2	12-24S-29E	
30-015-54015	Poker Lake Unit 13 24 PC #166H	NE/4	13-24S-29E	98220
		E/2 NE/4	1-24S-29E	
		E/2	12-24S-29E	
30-015-53552	Poker Lake Unit 13 24 PC #168H	E/2	12-24S-29E	98220
		NE/4	13-24S-29E	
		E/2 NE/4	1-24S-29E	



POKER LAKE UNIT 13 PC CVB LEASE MAP

EDDY COUNTY, NM

Legend

FEDERAL SURFACE AND MINERAL LEASE

- NMLC 0069005 / NMNM105443079
- NMLC 0070175A / NMNM105511730
- NMNM 0005912 / NMNM105469353

★ GAS FMP (2)

★ OIL FMP (2)

CVB SITE

POKER LAKE UNIT

Wells

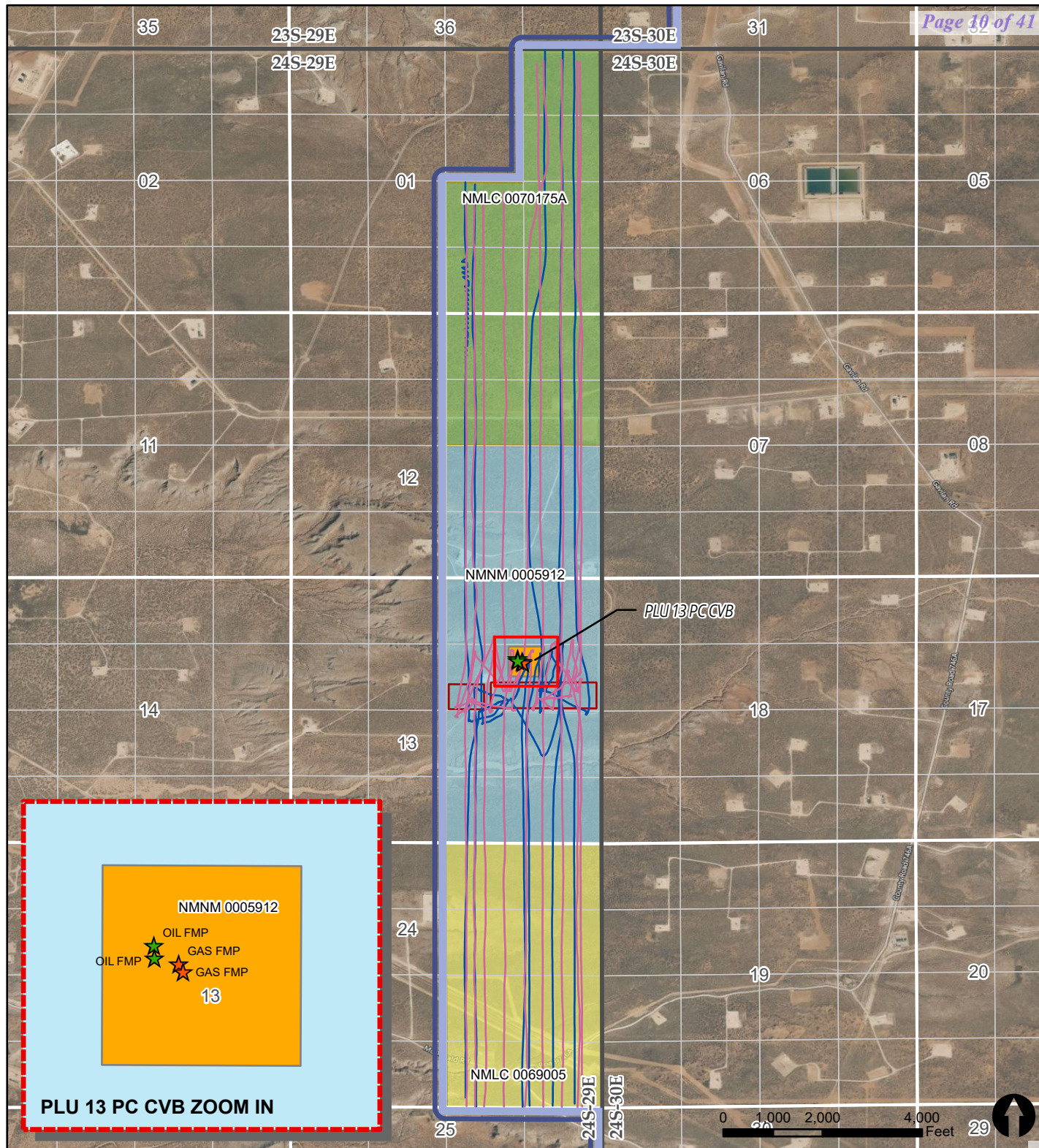
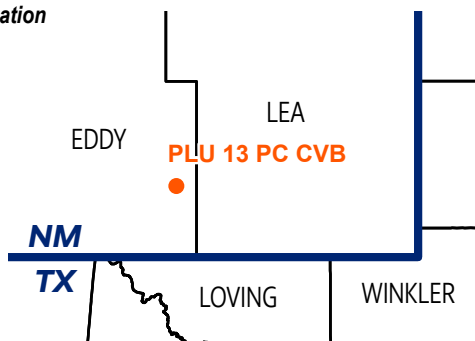
Wolfcamp

- 3001554010 Poker Lake Unit 131 PC 105H
- 3001553565 Poker Lake Unit 131 PC 107H
- 3001554012 Poker Lake Unit 131 PC 116H
- 3001553563 Poker Lake Unit 131 PC 118H
- 3001553562 Poker Lake Unit 131 PC 125H
- 3001553554 Poker Lake Unit 131 PC 127H
- 3001553560 Poker Lake Unit 131 PC 158H
- 3001554013 Poker Lake Unit 131 PC 165H
- 3001554014 Poker Lake Unit 131 PC 167H
- 3001554359 Poker Lake Unit 1324 PC 106H
- 3001553558 Poker Lake Unit 1324 PC 108H
- 3001553557 Poker Lake Unit 1324 PC 116H
- 3001553556 Poker Lake Unit 1324 PC 118H
- 3001554358 Poker Lake Unit 1324 PC 125H
- 3001553553 Poker Lake Unit 1324 PC 127H
- 3001554357 Poker Lake Unit 1324 PC 165H
- 3001554015 Poker Lake Unit 1324 PC 166H
- 3001553552 Poker Lake Unit 1324 PC 168H

Bone Spring

- 3001556753 POKER LAKE UNIT 13 1 PC 507H
- 3001556743 POKER LAKE UNIT 13 1 PC 705H
- 3001556748 POKER LAKE UNIT 13 24 PC 705H
- 3001556744 POKER LAKE UNIT 13 1 PC 707H
- 3001556749 POKER LAKE UNIT 13 24 PC 707H
- 3001556745 POKER LAKE UNIT 13 1 PC 708H
- 3001556750 POKER LAKE UNIT 13 24 PC 708H
- 3001556746 POKER LAKE UNIT 13 1 PC 805H
- 3001556751 POKER LAKE UNIT 13 24 PC 805H
- 3001556747 POKER LAKE UNIT 13 1 PC 806H
- 3001556752 POKER LAKE UNIT 13 24 PC 806H

Location



District I
1625 N. French Drive, Hobbs, NM 88240
District II
811 S. First St., Artesia, NM 88210
District III
1000 Rio Brazos Road, Aztec, NM 87410
District IV
1220 S. St Francis Dr, Santa Fe, NM
87505

State of New Mexico
Energy, Minerals and Natural Resources Department

Form C-107-B
Revised August 1, 2011

OIL CONSERVATION DIVISION
1220 S. St Francis Drive
Santa Fe, New Mexico 87505

Submit the original
application to the Santa Fe
office with one copy to the
appropriate District Office.

APPLICATION FOR SURFACE COMMINGLING (DIVERSE OWNERSHIP)

OPERATOR NAME: [373075] XTO PERMIAN OPERATING LLC.
OPERATOR ADDRESS: 3617 North Big Spring Street, Midland, Texas 79705
APPLICATION TYPE:

Pool Commingling Lease Commingling [X] Pool and Lease Commingling Off-Lease Storage and Measurement (Only if not Surface Commingled)

LEASE TYPE: Fee State [X] Federal

Is this an Amendment to existing Order? [X] Yes [] No If "Yes", please include the appropriate Order No. CTB-1120A
Have the Bureau of Land Management (BLM) and State Land office (SLO) been notified in writing of the proposed commingling
[X] Yes [] No

(A) POOL COMMINGLING
Please attach sheets with the following information

Table with 5 columns: (1) Pool Names and Codes, Gravities / BTU of Non-Commingled Production, Calculated Gravities / BTU of Commingled Production, Calculated Value of Commingled Production, Volumes. Rows include PURPLE SAGE; WOLFCAMP (GAS), CEDAR CANYON; BONE SPRING, WILDCAT S243006B; BONE SPRING, PIERCE CROSSING; BONE SPRING.

(2) Are any wells producing at top allowables? [] Yes [X] No
(3) Has all interest owners been notified by certified mail of the proposed commingling? [X] Yes [] No.
(4) Measurement type: [] Metering [X] Other (Specify) Well Test Method
(5) Will commingling decrease the value of production? [] Yes [X] No If "yes", describe why commingling should be approved

(B) LEASE COMMINGLING
Please attach sheets with the following information

(1) Pool Name and Code.
(2) Is all production from same source of supply? [] Yes [] No
(3) Has all interest owners been notified by certified mail of the proposed commingling? [] Yes [] No
(4) Measurement type: [] Metering [] Other (Specify)

(C) POOL and LEASE COMMINGLING
Please attach sheets with the following information

(1) Complete Sections A and E.

(D) OFF-LEASE STORAGE and MEASUREMENT
Please attached sheets with the following information

(1) Is all production from same source of supply? [] Yes [] No
(2) Include proof of notice to all interest owners.

(E) ADDITIONAL INFORMATION (for all application types)
Please attach sheets with the following information

(1) A schematic diagram of facility, including legal location. See attached
(2) A plat with lease boundaries showing all well and facility locations. Include lease numbers if Federal or State lands are involved. See attached
(3) Lease Names, Lease and Well Numbers, and API Numbers. See attached

I hereby certify that the information above is true and complete to the best of my knowledge and belief.

SIGNATURE: Russell Young TITLE: NM Commingle Manager DATE: 1/22/2026

TYPE OR PRINT NAME Russell Young TELEPHONE NO.: (832) 302-5430
E-MAIL ADDRESS: russell.young@exxonmobil.com

Facility Process Flow and Measurement

The production from each well will flow from its respective surface hole location through a flowline to an inlet header at the facility. The inlet header directs the well production into either a test separator or bulk (common) production separator. If a well is not directed to the test separator, the flow is directed into the bulk production separator.

The test separator is a horizontal vessel where the gas, oil, and water are separated and measured. The gas flow is measured using an orifice meter following API Standard MPMS14.3.2 and the flow is calculated using an electronic flow meter (EFM). The oil flow is measured using a meter following the API Standard MPMS 5.6. The water flow is measured using a meter. Well test by separating and metering the oil production from the well for either (a) a minimum of twenty-four (24) consecutive hours; or (b) a combination of nonconsecutive periods that meet the following conditions: (i) each period shall be a minimum of six (6) hours; and (ii) the total duration of the nonconsecutive periods shall be a minimum of eighteen (18) hours. The Well Test Method used follows the API Standard MPMS 20.1 and meets state and federal regulations.

At the facility production is separated into oil, gas and water. The oil then flows into a heater treater. From the heater treater the oil is routed to a Vapor Recovery Tower (VRT) and then transferred into the oil pipeline using a LACT unit used as an FMP/sales meter.

The facility design has common ancillary equipment that includes—vapor recovery units, flares, and a water system. The flash gas is metered and then will enter the primary gas line after all FMPs / sales meter.

Reservoir Forecasted Declines

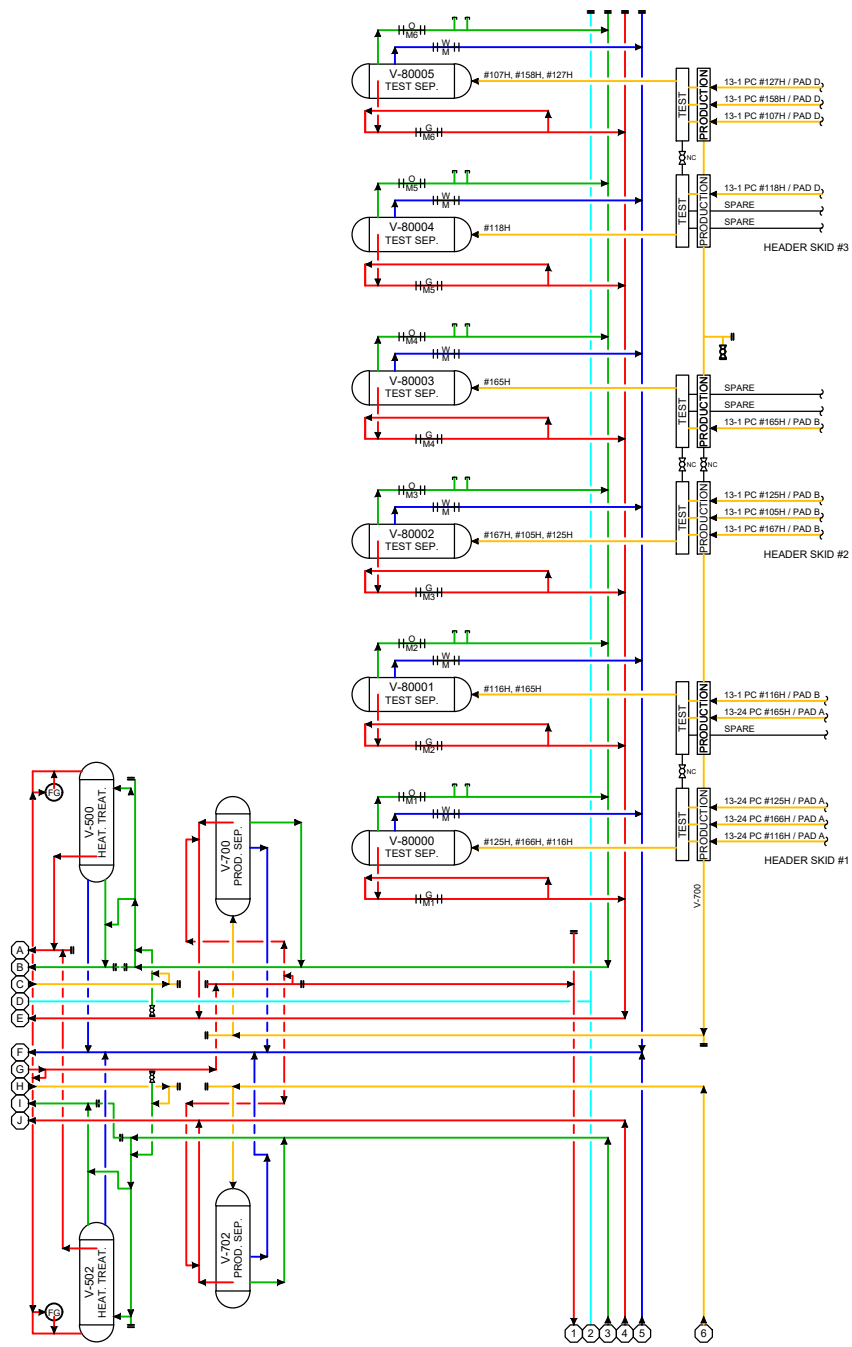
These wells may produce high volumes for a short three-month period and are then expected to decline for the remaining life of each well. After the initial period of hyperbolic decline, production stabilizes at a more predictable exponential decline rate.

Production and Allocation

Based on the decline rates, the wells will be tested at differing frequencies for optimum accuracy. Based on the production decline, the following three periods will be used to determine well test frequency:

- Range 1 – Initial Production Period – from the first production until the earlier of either the peak production rate or thirty (30) days after the first production; minimum 10 well tests/per month
- Range 2 – Plateau Period – the end of the initial production period to the peak decline rate; minimum 3 well tests/per month
- Range 3 – Decline Period – the end of plateau period until well is plugged and abandoned; minimum 3 well tests/ per month when the decline rate is >22% per month, 2 well tests/per month when the decline rate is between 22%-10% per month, and 1 well test/per month when the decline rate is <10% per month

Gas and oil production will then be allocated daily based on the most recent individual well tests of oil, gas and water. The time increment for reported sales through the sales meters is monthly.



DRAWING ID	METER DESCRIPTION	TYPE	METER ID #	PURPOSE
GM1	V-80000 TEST SEPARATOR	ORIFICE	DBPC0074G	ALLOCATION
GM2	V-80001 TEST SEPARATOR	ORIFICE	DBPC0075G	ALLOCATION
GM3	V-80002 TEST SEPARATOR	ORIFICE	DBPC0076G	ALLOCATION
GM4	V-80003 TEST SEPARATOR	ORIFICE	DBPC0077G	ALLOCATION
GM5	V-80004 TEST SEPARATOR	ORIFICE	DBPC0078G	ALLOCATION
GM6	V-80005 TEST SEPARATOR	ORIFICE	DBPC0079G	ALLOCATION
GM7	V-400 SALES GAS SCRUB. - TRAIN #1 FMP	ORIFICE	DBPC0068G	SALES
GM8	V-402 SALES GAS SCRUB. - TRAIN #3 FMP	ORIFICE	DBPC0069G	SALES
GM9	VRU CPK-140 & CPK-142 (SICK)	ULTRASONIC	DBPC0073G	PRODUCTION
GM10	20" SALES GAS CHECK TO COUGAR COMP. STA. (SICK)	ULTRASONIC	DBPC0071G	SALES CHECK
GM11	GAS LIFT BUY-BACK	ORIFICE	DBPC0072G	PRODUCTION
GM12	HP FLARE METER (SICK)	ULTRASONIC	DBPC0070G	PRODUCTION
GM13	V-80021 TEST SEPARATOR	ORIFICE	--	ALLOCATION
GM14	V-80020 TEST SEPARATOR	ORIFICE	--	ALLOCATION
GM15	V-80022 TEST SEPARATOR	ORIFICE	--	ALLOCATION
GM16	V-80023 TEST SEPARATOR	ORIFICE	--	ALLOCATION
OM1	V-80000 TEST SEPARATOR	CORIOLIS	DBPC0074O	ALLOCATION
OM2	V-80001 TEST SEPARATOR	CORIOLIS	DBPC0075O	ALLOCATION
OM3	V-80002 TEST SEPARATOR	CORIOLIS	DBPC0076O	ALLOCATION
OM4	V-80003 TEST SEPARATOR	CORIOLIS	DBPC0077O	ALLOCATION
OM5	V-80004 TEST SEPARATOR	CORIOLIS	DBPC0078O	ALLOCATION
OM6	V-80005 TEST SEPARATOR	CORIOLIS	DBPC0079O	ALLOCATION
OM7	LACT UNIT PPK-130 - TRAIN #1 FMP	CORIOLIS	DBPC0080OL	SALES
OM8	LACT UNIT PPK-132 - TRAIN #3 FMP	CORIOLIS	DBPC0081OL	SALES
OM9	V-80021 TEST SEPARATOR	CORIOLIS	--	ALLOCATION
OM10	V-80020 TEST SEPARATOR	CORIOLIS	--	ALLOCATION
OM11	V-80022 TEST SEPARATOR	CORIOLIS	--	ALLOCATION
OM12	V-80023 TEST SEPARATOR	CORIOLIS	--	ALLOCATION
WM1	WATER TRANSFER METER	MAGMETER	--	PRODUCTION

Facility Gas Usage	
Equipment	Usage
TRAIN 1 HEATER TREATER	11.8 MSCFD
TRAIN 3 HEATER TREATER	11.8 MSCFD

- EMULSION — Yellow
- WATER — Blue
- OIL — Green
- GAS — Red
- INSTR. AIR — Cyan

ISSUED FOR REVIEW

DATE: _____
SIGN: _____

Revision	Description of Change	Date	By	ENG. APPD. By
0	FOR APPROVAL	3/5/2025	JLF	SK
1	ADD. NEW TEST., HDR. & WELLS	1/21/2026	JLF	SK

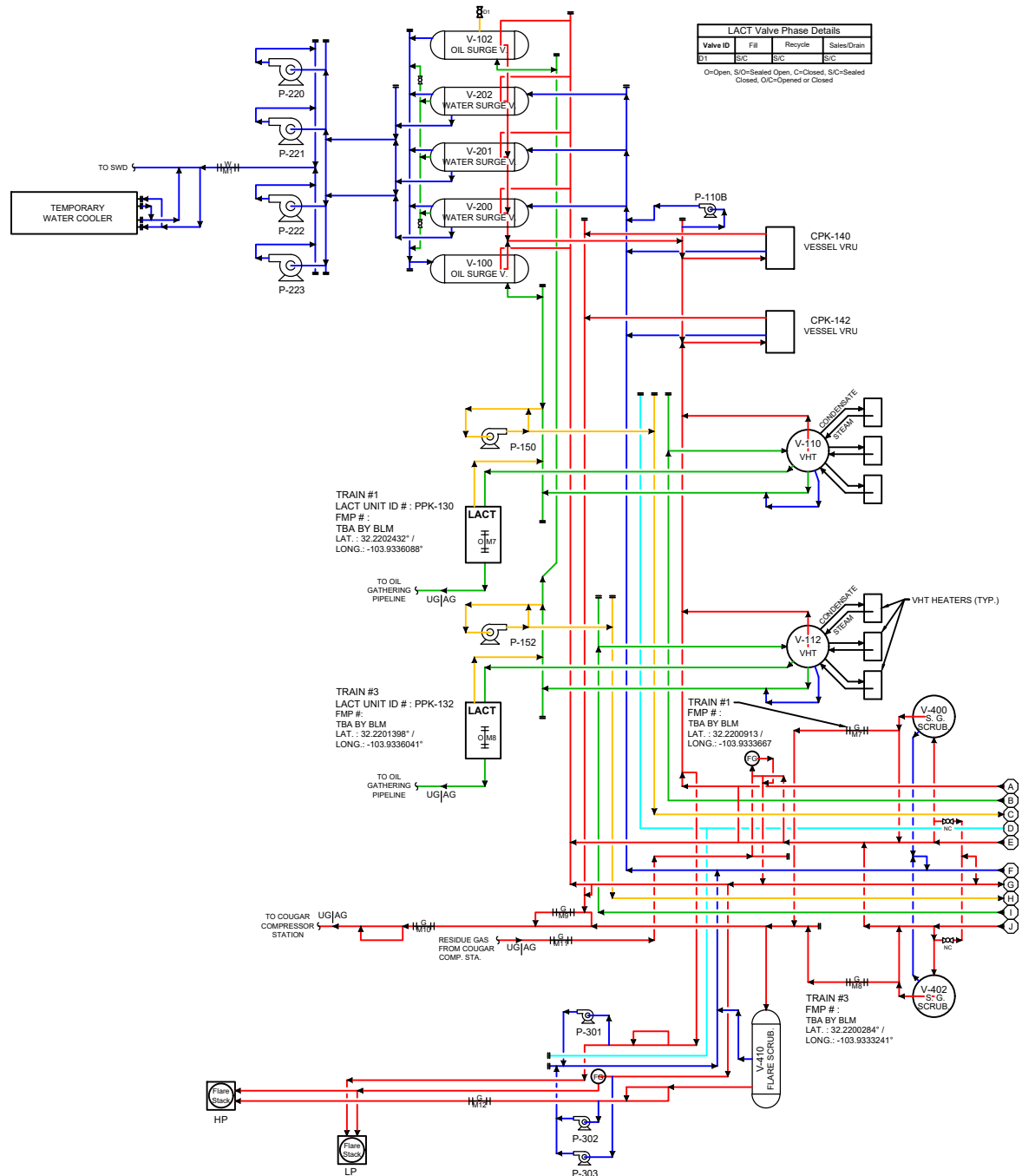


POKER LAKE UNIT 13 PC
CENTRAL VESSEL BATTERY
EDDY COUNTY, NEW MEXICO

LAT.: 32.22022 / LONG.: -103.93364
USA NMNM005912 / SEC. 13-T24S-R29E, SENE

SITE FACILITY DIAGRAM - SHEET 1 OF 3

FILE NO. _____ REV. No. _____
POKER LAKE UNIT 13 PC CVB



LACT Valve Phase Details			
Valve ID	Fill	Recycle	Sales/Drain
V1	S/C	S/C	S/C

O=Open, S/C=Sealed Open, C=Closed, S/C=Sealed Closed, O/C=Opened or Closed



Facility Gas Usage	
Equipment	Usage
TRAIN 1 HEATER TREATER	11.8 MSCFD
TRAIN 3 HEATER TREATER	11.8 MSCFD

EMULSION	—
WATER	—
OIL	—
GAS	—
INSTR. AIR	—

ISSUED FOR REVIEW

DATE: _____

SIGN: _____

Revision	Description of Change	Date	By	ENG. APPD. By
0	FOR APPROVAL	3/5/2025	JLF	SK
1	ADD. NEW TEST, HDR. & WELLS	1/21/2026	JLF	SK

POKER LAKE UNIT 13 PC
CENTRAL VESSEL BATTERY
EDDY COUNTY, NEW MEXICO

LAT.: 32.22022 / LONG.: -103.93364
USA NMNM005912 / SEC. 13-T24S-R29E, SENE

SITE FACILITY DIAGRAM - SHEET 3 OF 3

FILE NO. _____ REV. No. _____

POKER LAKE UNIT 13 PC CVB 1



DRAWING REVISION LOG				
REVISION	DATE	REVISION DESCRIPTION	BY	REQUESTED BY
1	1/21/2026	ADDED NEW TESTERS, HEADERS & WELLS FM WP B & C	JLF	SK

Facility Gas Usage	
Equipment	Usage
TRAIN 1 HEATER TREATER	11.8 MSCFD
TRAIN 3 HEATER TREATER	11.8 MSCFD

- EMULSION —
- WATER —
- OIL —
- GAS —
- INSTR. AIR —

ISSUED
FOR
REVIEW

DATE: _____
SIGN: _____

Revision	Description of Change	Date	By	ENG. APPD. By
0	FOR APPROVAL	3/5/2025	JLF	SK
1	ADD. NEW TEST., HDR. & WELLS	1/21/2026	JLF	SK



POKER LAKE UNIT 13 PC
CENTRAL VESSEL BATTERY
EDDY COUNTY, NEW MEXICO

LAT.: 32.22022 / LONG.: -103.93364
USA NMNM005912 / SEC. 13-T24S-R29E, SENE

SITE FACILITY DIAGRAM - DRAWING LOG

FILE NO. POKER LAKE UNIT 13 PC CVB

REV. No. 1



January 22, 2026

CERTIFIED MAIL
RETURN RECEIPT REQUESTED

TO: ALL AFFECTED PARTIES

Re: Application of XTO Permian Operating, LLC for administrative approval to amend CTB-1120A and for administrative approval to surface commingle (pool and lease) oil and gas production from Sections 1, 12, 13, and 24, Township 24 South, Range 29 East, NMPM, Eddy County, New Mexico (the "Lands")

To Whom It May Concern:

Enclosed is a copy of the above-referenced application, which was filed with the New Mexico Oil Conservation Division on this date. Any objection to this application must be filed in writing within twenty (20) days from the date this application is received by the Division's Santa Fe office located at 1220 South St. Francis Drive, Santa Fe, New Mexico, 87505. If no objection is received within this twenty-day period, this application may be approved administratively by the Division.

If you have any questions about this application, please contact the following:

Russell Young
(832) 302-5430
Russell.young@exxonmobil.com

Sincerely,

Russell Young

Russell Young
New Mexico Commingle Manager
Unconventional, Upstream

XTO Permian Operating, LLC.
3617 North Big Spring Street
Midland, Texas 79705

PLU 13 PC - POSTAL DELIVERY LIST				
CERTIFIED RECEIPT #	NAME	ADDRESS	ADDRESS 2	DATE NOTIFICATION SENT
9589 0710 5270 1533 1717 90	Eckard Century, LLC	906 W. McDermott Drive, Suite 116-323	Allen TX 75013	1.23.26
9589 0710 5270 1533 1716 22	Elliott - Hall Company	P.O. Box 150530	Ogden UT 84415	1.23.26
9589 0710 5270 1533 1716 15	Elliott - Hall Company	2668 Grant Ave, Suite 104	Ogden UT 84401	1.23.26
9589 0710 5270 1533 1717 83	Estate of Betty Ruth Wright, Dec'd, c/o William Wright	1000 Paseo De Peralta	Santa Fe NM 87501	1.23.26
9589 0710 5270 1533 1716 39	Estate of Betty Ruth Wright, Dec'd, c/o William Wright	104 Villa Alegre St.	Santa Fe NM 87501	1.23.26
9589 0710 5270 1533 1716 08	Estate of Willa June Morgan, Dec'd	9500 New Ave.	Gilroy CA 95020	1.23.26
9589 0710 5270 1533 1717 76	Juana B. Hall, Trustee of the George W. Hall 1984 Revocable Trust	P.O. Box 797	Perry OK 73077	1.23.26
9589 0710 5270 1533 1716 46	Juana B. Hall, Trustee of the George W. Hall 1984 Revocable Trust	702 Wakefield Rd.	Perry OK 73077	1.23.26
9589 0710 5270 1533 1715 92	MSH Family Real Estate Partnership II, LLC	4143 Maple Avenue, Suite 500	Dallas TX 75219	1.23.26
9589 0710 5270 1533 1717 69	O. R. Hall Royalty, LLC	P.O. Box 150530	Ogden UT 84415	1.23.26
9589 0710 5270 1533 1715 53	O. R. Hall Royalty, LLC	1186 E. 4600 St., Suite 412	Ogden UT 84403	1.23.26
9589 0710 5270 1533 1715 85	O. R. Hall Royalty, LLC	2668 Grant Avenue, Suite 104	Ogden UT 84401	1.23.26
9598 0710 5270 1533 1717 52	Texas Pacific Royalty Acquisitions, LLC	1700 Pacific Avenue, Suite 2900	Dallas TX 75201	1.23.26
9598 0710 5270 1533 1716 60	Pegasus Resources, LLC	P.O. Box 470698	Fort Worth TX 76147	1.23.26
9589 0710 5270 1533 1715 78	Pegasus Resources, LLC	3230 Camp Bowie Blvd., Suite 300	Fort Worth TX 76107	1.23.26
9589 0710 5270 1533 1717 45	Vatex Mineral Fund I, LP	1204 W. 7th Street, Suite 200	Fort Worth TX 76102	1.23.26
9589 0710 5270 1533 1716 77	West Bend Energy Partners, LLC	1320 S. University Drive, Suite 701	Fort Worth TX 76107	1.23.26
9589 0710 5270 1533 1715 61	West Bend Energy Partners, LLC	1320 S. University Drive, Suite 700	Fort Worth TX 76107	1.23.26
9589 0710 5270 1533 1717 38	West Bend Energy Partners, LLC	P.O. Box 472087	Fort Worth TX 76147	1.23.26
9589 0710 5270 1533 1716 84	SMP Sidecar Titan Mineral Holdings, LP	4143 Maple Avenue, Suite 500	Dallas TX 75219	1.23.26
9589 0710 5270 1533 1715 54	SMP Titan Flex, LP	4143 Maple Avenue, Suite 500	Dallas TX 75219	1.23.26
9589 0710 5270 1533 1717 21	SMP Titan Mineral Holdings, LP	4143 Maple Avenue, Suite 500	Dallas TX 75219	1.23.26
9598 0710 5270 1533 1716 91	BEPKO, LP	201 Main Street, Suite 3000	Fort Worth TX 76102	1.23.26
9598 0710 5270 1533 1716 91	CTAM O&G, LLC	201 Main Street, Suite 3000	Fort Worth TX 76102	1.23.26
9598 0710 5270 1533 1716 91	CTV-LMB I BPEOR NM, LLC	201 Main Street, Suite 3000	Fort Worth TX 76102	1.23.26
9598 0710 5270 1533 1716 91	CTV-LMB II BPEOR NM, LLC	201 Main Street, Suite 3000	Fort Worth TX 76102	1.23.26
9598 0710 5270 1533 1716 91	CTV-SRB I BPEOR NM, LLC	201 Main Street, Suite 3000	Fort Worth TX 76102	1.23.26
9598 0710 5270 1533 1716 91	CTV-SRB II BPEOR NM, LLC	201 Main Street, Suite 3000	Fort Worth TX 76102	1.23.26
9598 0710 5270 1533 1716 91	GC O&G, LLC	201 Main Street, Suite 3000	Fort Worth TX 76102	1.23.26
9598 0710 5270 1533 1716 91	Hyatt Anne Bass Management Trust	201 Main Street, Suite 3000	Fort Worth TX 76102	1.23.26
9598 0710 5270 1533 1716 91	LMB I BPEOR NM, LLC	201 Main Street, Suite 3000	Fort Worth TX 76102	1.23.26
9598 0710 5270 1533 1716 91	LMB I BPEOR NM, LLC	201 Main Street, Suite 2300	Fort Worth TX 76102	1.23.26
9598 0710 5270 1533 1716 91	LMB II BPEOR NM, LLC	201 Main Street, Suite 3000	Fort Worth TX 76102	1.23.26
9598 0710 5270 1533 1716 91	LMB II BPEOR NM, LLC	201 Main Street, Suite 2300	Fort Worth TX 76102	1.23.26
9598 0710 5270 1533 1716 91	Samantha Sims Bass Management Trust	201 Main Street, Suite 3000	Fort Worth TX 76102	1.23.26
9598 0710 5270 1533 1716 91	SRBI I BPEOR NM, LLC	201 Main Street, Suite 3000	Fort Worth TX 76102	1.23.26
9598 0710 5270 1533 1716 91	SRBI I BPEOR NM, LLC	201 Main Street, Suite 2300	Fort Worth TX 76102	1.23.26
9598 0710 5270 1533 1716 91	SRBI II BPEOR NM, LLC	201 Main Street, Suite 3000	Fort Worth TX 76102	1.23.26
9598 0710 5270 1533 1716 91	SRBI II BPEOR NM, LLC	201 Main Street, Suite 2300	Fort Worth TX 76102	1.23.26
9598 0710 5270 1533 1716 91	Thru Line BPEOR NM, LLC	201 Main Street, Suite 3000	Fort Worth TX 76102	1.23.26
9598 0710 5270 1533 1716 91	Thru Line BPEOR NM, LLC	201 Main Street, Suite 2300	Fort Worth TX 76102	1.23.26
9589 0710 5270 1533 1715 47	Chevron U.S.A. Inc.	1400 Smith Street	Houston TX 77002	1.23.26
9589 0710 5270 1533 1717 14	XTO Delaware Basin, LLC	22777 Spingwoods Village Parkway	Spring TX 77389	1.23.26
9589 0710 5270 1533 1717 07	Bureau of Land Management - Attn: Jonathan Shepard	301 Dinosaur Trail	Santa Fe NM 87508	1.23.26
9589 0710 5270 1533 1715 30	Bureau of Land Management	620 E. Greene St.	Carlsbad NM 88220	1.23.26

USPS Tracking®

FAQs >

Tracking Number:

Remove X

9589071052701533171790

Copy

Add to Informed Delivery (<https://informedelivery.usps.com/>)

Latest Update

Your item was delivered to an individual at the address at 11:20 am on January 31, 2026 in ALLEN, TX 75013.

Get More Out of USPS Tracking:

USPS Tracking Plus®

Delivered

Delivered, Left with Individual

ALLEN, TX 75013

January 31, 2026, 11:20 am

[See All Tracking History](#)

[What Do USPS Tracking Statuses Mean?](https://faq.usps.com/s/article/Where-is-my-package) (<https://faq.usps.com/s/article/Where-is-my-package>)

Text & Email Updates



USPS Tracking Plus®



Product Information



Feedback

See Less ^

Tracking Number:

Remove X

9589071052701533171622

Copy

Add to Informed Delivery (<https://informedelivery.usps.com/>)

Latest Update

Your item was picked up at a postal facility at 9:44 am on January 29, 2026 in MIDLAND, TX 79705.

Get More Out of USPS Tracking:

USPS Tracking Plus®

Delivered

Delivered, Individual Picked Up at Postal Facility

MIDLAND, TX 79705

January 29, 2026, 9:44 am

[See All Tracking History](#)

[What Do USPS Tracking Statuses Mean?](https://faq.usps.com/s/article/Where-is-my-package) (https://faq.usps.com/s/article/Where-is-my-package)

[See More](#) 

Tracking Number:

[Remove](#) 

9589071052701533171615

[Copy](#)

[Add to Informed Delivery \(https://informedelivery.usps.com/\)](https://informedelivery.usps.com/)

Latest Update

Your item was returned to the sender on February 13, 2026 at 8:10 am in MIDLAND, TX 79705 because it could not be delivered as addressed.

Get More Out of USPS Tracking:

USPS Tracking Plus[®]

Alert

 **Return to Sender**

MIDLAND, TX 79705

February 13, 2026, 8:10 am

 **In Transit to Next Facility**

February 8, 2026

 [See All Tracking History](#)

[What Do USPS Tracking Statuses Mean?](https://faq.usps.com/s/article/Where-is-my-package) (https://faq.usps.com/s/article/Where-is-my-package)

[See More](#) 

Tracking Number:

[Remove](#) 

9589071052701533171783

[Copy](#)

[Add to Informed Delivery \(https://informedelivery.usps.com/\)](https://informedelivery.usps.com/)

Latest Update

Your item was delivered to an individual at the address at 11:34 am on February 17, 2026 in SANTA FE, NM 87501.

Get More Out of USPS Tracking:

USPS Tracking Plus[®]

Delivered

Delivered, Left with Individual

SANTA FE, NM 87501

February 17, 2026, 11:34 am

[See All Tracking History](#)

[What Do USPS Tracking Statuses Mean?](https://faq.usps.com/s/article/Where-is-my-package) (https://faq.usps.com/s/article/Where-is-my-package)

[See More](#) 

Tracking Number:

[Remove](#) 

9589071052701533171639

[Copy](#)

[Add to Informed Delivery](https://informedelivery.usps.com/) (https://informedelivery.usps.com/)

Latest Update

Your item was picked up at a postal facility at 9:44 am on January 29, 2026 in MIDLAND, TX 79705.

Get More Out of USPS Tracking:

USPS Tracking Plus[®]

Delivered

Delivered, Individual Picked Up at Postal Facility

MIDLAND, TX 79705

January 29, 2026, 9:44 am

[See All Tracking History](#)

[What Do USPS Tracking Statuses Mean?](https://faq.usps.com/s/article/Where-is-my-package) (https://faq.usps.com/s/article/Where-is-my-package)

[See More](#) 

Tracking Number:

[Remove](#) 

9589071052701533171608

[Copy](#)

[Add to Informed Delivery](https://informedelivery.usps.com/) (https://informedelivery.usps.com/)

Latest Update

Your item has been delivered to the original sender at 9:31 am on February 26, 2026 in MIDLAND, TX 79705.

Get More Out of USPS Tracking:

USPS Tracking Plus[®]

Delivered

Delivered, To Original Sender

MIDLAND, TX 79705

February 26, 2026, 9:31 am

[See All Tracking History](#)

[What Do USPS Tracking Statuses Mean?](https://faq.usps.com/s/article/Where-is-my-package) (https://faq.usps.com/s/article/Where-is-my-package)

[See More](#) 

Tracking Number:

Remove X

9589071052701533171776

Copy

Add to Informed Delivery (<https://informedelivery.usps.com/>)

Latest Update

Your item was picked up at the post office at 9:22 am on January 29, 2026 in PERRY, OK 73077.

Get More Out of USPS Tracking:

USPS Tracking Plus®

Delivered

Delivered, Individual Picked Up at Post Office

PERRY, OK 73077

January 29, 2026, 9:22 am

See All Tracking History

[What Do USPS Tracking Statuses Mean?](https://faq.usps.com/s/article/Where-is-my-package) (<https://faq.usps.com/s/article/Where-is-my-package>)

See More ∨

Tracking Number:

Remove X

9589071052701533171646

Copy

Add to Informed Delivery (<https://informedelivery.usps.com/>)

Latest Update

Your item was picked up at the post office at 1:14 pm on January 30, 2026 in PERRY, OK 73077.

Get More Out of USPS Tracking:

USPS Tracking Plus®

Delivered

Delivered, Individual Picked Up at Post Office

PERRY, OK 73077

January 30, 2026, 1:14 pm

See All Tracking History

[What Do USPS Tracking Statuses Mean?](https://faq.usps.com/s/article/Where-is-my-package) (<https://faq.usps.com/s/article/Where-is-my-package>)

See More ∨

Tracking Number:

Remove X

9589071052701533171592

Copy

Add to Informed Delivery (<https://informedelivery.usps.com/>)

Latest Update

Your item was delivered to the front desk, reception area, or mail room at 12:47 pm on February 4, 2026 in DALLAS, TX 75219.

Get More Out of USPS Tracking:

USPS Tracking Plus®

Delivered

Delivered, Front Desk/Reception/Mail Room

DALLAS, TX 75219

February 4, 2026, 12:47 pm

[See All Tracking History](#)

[What Do USPS Tracking Statuses Mean?](https://faq.usps.com/s/article/Where-is-my-package) (https://faq.usps.com/s/article/Where-is-my-package)

[See More](#) ∨

Tracking Number:

[Remove](#) ✕

9589071052701533171769

[Copy](#)

[Add to Informed Delivery \(https://informedelivery.usps.com/\)](https://informedelivery.usps.com/)

Latest Update

Your item was picked up at a postal facility at 9:44 am on January 29, 2026 in MIDLAND, TX 79705.

Get More Out of USPS Tracking:

USPS Tracking Plus®

Delivered

Delivered, Individual Picked Up at Postal Facility

MIDLAND, TX 79705

January 29, 2026, 9:44 am

[See All Tracking History](#)

[What Do USPS Tracking Statuses Mean?](https://faq.usps.com/s/article/Where-is-my-package) (https://faq.usps.com/s/article/Where-is-my-package)

[See More](#) ∨

Tracking Number:

[Remove](#) ✕

9589071052701533171653

[Copy](#)

[Add to Informed Delivery \(https://informedelivery.usps.com/\)](https://informedelivery.usps.com/)

Latest Update

Your item was picked up at the post office at 12:40 pm on February 3, 2026 in OGDEN, UT 84403.

Get More Out of USPS Tracking:

USPS Tracking Plus®

Delivered

Delivered, Individual Picked Up at Post Office

OGDEN, UT 84403

February 3, 2026, 12:40 pm

[See All Tracking History](#)

[What Do USPS Tracking Statuses Mean?](https://faq.usps.com/s/article/Where-is-my-package) (https://faq.usps.com/s/article/Where-is-my-package)

[See More](#) ▾

Tracking Number:

[Remove](#) ✕

9589071052701533171585

[Copy](#)

[Add to Informed Delivery](https://informedelivery.usps.com/) (https://informedelivery.usps.com/)

Latest Update

Your item was picked up at a postal facility at 9:44 am on January 29, 2026 in MIDLAND, TX 79705.

Get More Out of USPS Tracking:

USPS Tracking Plus[®]

Delivered

Delivered, Individual Picked Up at Postal Facility

MIDLAND, TX 79705

January 29, 2026, 9:44 am

[See All Tracking History](#)

[What Do USPS Tracking Statuses Mean?](https://faq.usps.com/s/article/Where-is-my-package) (https://faq.usps.com/s/article/Where-is-my-package)

[See More](#) ▾

Tracking Number:

[Remove](#) ✕

9589071052701533171752

[Copy](#)

[Add to Informed Delivery](https://informedelivery.usps.com/) (https://informedelivery.usps.com/)

Latest Update

Your item has been delivered to the original sender at 9:44 am on February 24, 2026 in MIDLAND, TX 79705.

Get More Out of USPS Tracking:

USPS Tracking Plus[®]

Delivered

Delivered, To Original Sender

MIDLAND, TX 79705

February 24, 2026, 9:44 am

[See All Tracking History](#)

[What Do USPS Tracking Statuses Mean?](https://faq.usps.com/s/article/Where-is-my-package) (https://faq.usps.com/s/article/Where-is-my-package)

[See More](#) ▾

Tracking Number:

Remove X

9589071052701533171660

Copy

Add to Informed Delivery (<https://informedelivery.usps.com/>)

Latest Update

Your item was picked up at the post office at 4:20 pm on February 5, 2026 in FORT WORTH, TX 76107.

Get More Out of USPS Tracking:

USPS Tracking Plus®

Delivered

Delivered, Individual Picked Up at Post Office

FORT WORTH, TX 76107

February 5, 2026, 4:20 pm

See All Tracking History

[What Do USPS Tracking Statuses Mean?](https://faq.usps.com/s/article/Where-is-my-package) (<https://faq.usps.com/s/article/Where-is-my-package>)

See More ∨

Tracking Number:

Remove X

9589071052701533171578

Copy

Add to Informed Delivery (<https://informedelivery.usps.com/>)

Latest Update

Your item was delivered to an individual at the address at 4:24 pm on February 2, 2026 in FORT WORTH, TX 76107.

Get More Out of USPS Tracking:

USPS Tracking Plus®

Delivered

Delivered, Left with Individual

FORT WORTH, TX 76107

February 2, 2026, 4:24 pm

See All Tracking History

[What Do USPS Tracking Statuses Mean?](https://faq.usps.com/s/article/Where-is-my-package) (<https://faq.usps.com/s/article/Where-is-my-package>)

See More ∨

Tracking Number:

Remove X

9589071052701533171745

Copy

Add to Informed Delivery (<https://informedelivery.usps.com/>)

Latest Update

Your item was picked up at a postal facility at 9:43 am on January 29, 2026 in MIDLAND, TX 79705.

Get More Out of USPS Tracking:

USPS Tracking Plus[®]

Delivered

Delivered, Individual Picked Up at Postal Facility

MIDLAND, TX 79705

January 29, 2026, 9:43 am

[See All Tracking History](#)

[What Do USPS Tracking Statuses Mean? \(https://faq.usps.com/s/article/Where-is-my-package\)](https://faq.usps.com/s/article/Where-is-my-package)

[See More](#) 

[Remove](#) 

Tracking Number:

9589071052701533171677

[Copy](#)

[Add to Informed Delivery \(https://informedelivery.usps.com/\)](https://informedelivery.usps.com/)

Latest Update

Your item was delivered to the front desk, reception area, or mail room at 2:36 pm on January 30, 2026 in FORT WORTH, TX 76107.

Get More Out of USPS Tracking:

USPS Tracking Plus[®]

Delivered

Delivered, Front Desk/Reception/Mail Room

FORT WORTH, TX 76107

January 30, 2026, 2:36 pm

[See All Tracking History](#)

[What Do USPS Tracking Statuses Mean? \(https://faq.usps.com/s/article/Where-is-my-package\)](https://faq.usps.com/s/article/Where-is-my-package)

[See More](#) 

[Remove](#) 

Tracking Number:

9589071052701533171561

[Copy](#)

[Add to Informed Delivery \(https://informedelivery.usps.com/\)](https://informedelivery.usps.com/)

Latest Update

Your item was delivered to the front desk, reception area, or mail room at 2:36 pm on January 30, 2026 in FORT WORTH, TX 76107.

Get More Out of USPS Tracking:

USPS Tracking Plus®

Delivered

Delivered, Front Desk/Reception/Mail Room

FORT WORTH, TX 76107

January 30, 2026, 2:36 pm

[See All Tracking History](#)

[What Do USPS Tracking Statuses Mean?](https://faq.usps.com/s/article/Where-is-my-package) (https://faq.usps.com/s/article/Where-is-my-package)

[See More](#) ▾

Tracking Number:

[Remove](#) ✕

9589071052701533171738

[Copy](#)

[Add to Informed Delivery](https://informedelivery.usps.com/) (https://informedelivery.usps.com/)

Latest Update

Your item was picked up at the post office at 12:46 pm on February 4, 2026 in FORT WORTH, TX 76107.

Get More Out of USPS Tracking:

USPS Tracking Plus®

Delivered

Delivered, Individual Picked Up at Post Office

FORT WORTH, TX 76107

February 4, 2026, 12:46 pm

[See All Tracking History](#)

[What Do USPS Tracking Statuses Mean?](https://faq.usps.com/s/article/Where-is-my-package) (https://faq.usps.com/s/article/Where-is-my-package)

[See More](#) ▾

Tracking Number:

[Remove](#) ✕

9589071052701533171684

[Copy](#)

[Add to Informed Delivery](https://informedelivery.usps.com/) (https://informedelivery.usps.com/)

Latest Update

Your item was delivered to the front desk, reception area, or mail room at 12:46 pm on February 4, 2026 in DALLAS, TX 75219.

Get More Out of USPS Tracking:

USPS Tracking Plus®

Delivered

Delivered, Front Desk/Reception/Mail Room

DALLAS, TX 75219

February 4, 2026, 12:46 pm

[See All Tracking History](#)

[What Do USPS Tracking Statuses Mean?](https://faq.usps.com/s/article/Where-is-my-package) (https://faq.usps.com/s/article/Where-is-my-package)

See More 

Tracking Number:

Remove X

9589071052701533171554

Copy

Add to Informed Delivery (<https://informedelivery.usps.com/>)

Latest Update

Your item was picked up at a postal facility at 9:43 am on January 29, 2026 in MIDLAND, TX 79705.

Get More Out of USPS Tracking:

USPS Tracking Plus[®]

Delivered

Delivered, Individual Picked Up at Postal Facility

MIDLAND, TX 79705

January 29, 2026, 9:43 am

See All Tracking History

[What Do USPS Tracking Statuses Mean?](https://faq.usps.com/s/article/Where-is-my-package) (<https://faq.usps.com/s/article/Where-is-my-package>)

See More 

Tracking Number:

Remove X

9589071052701533171721

Copy

Add to Informed Delivery (<https://informedelivery.usps.com/>)

Latest Update

Your item was delivered to the front desk, reception area, or mail room at 12:46 pm on February 4, 2026 in DALLAS, TX 75219.

Get More Out of USPS Tracking:

USPS Tracking Plus[®]

Delivered

Delivered, Front Desk/Reception/Mail Room

DALLAS, TX 75219

February 4, 2026, 12:46 pm

See All Tracking History

[What Do USPS Tracking Statuses Mean?](https://faq.usps.com/s/article/Where-is-my-package) (<https://faq.usps.com/s/article/Where-is-my-package>)

See More 

Tracking Number:

Remove X

9589071052701533171691

Copy

Add to Informed Delivery (<https://informedelivery.usps.com/>)

Latest Update

Your item was delivered to an individual at the address at 10:22 am on February 11, 2026 in FORT WORTH, TX 76102.

Get More Out of USPS Tracking:

USPS Tracking Plus®

Delivered

Delivered, Left with Individual

FORT WORTH, TX 76102
February 11, 2026, 10:22 am

See All Tracking History

[What Do USPS Tracking Statuses Mean?](https://faq.usps.com/s/article/Where-is-my-package) (https://faq.usps.com/s/article/Where-is-my-package)

See More ∨

Tracking Number:

Remove X

9589071052701533171547

Copy

Add to Informed Delivery (https://informedelivery.usps.com/)

Latest Update

Your item has been delivered to an agent. The item was picked up at USPS at 3:11 pm on February 2, 2026 in HOUSTON, TX 77002.

Get More Out of USPS Tracking:

USPS Tracking Plus®

Delivered to Agent

Delivered to Agent, Picked up at USPS

HOUSTON, TX 77002
February 2, 2026, 3:11 pm

See All Tracking History

[What Do USPS Tracking Statuses Mean?](https://faq.usps.com/s/article/Where-is-my-package) (https://faq.usps.com/s/article/Where-is-my-package)

See More ∨

Tracking Number:

Remove X

9589071052701533171714

Copy

Add to Informed Delivery (https://informedelivery.usps.com/)

Latest Update

Your item was picked up at a postal facility at 9:43 am on January 29, 2026 in MIDLAND, TX 79705.

Get More Out of USPS Tracking:

USPS Tracking Plus®

Delivered

Delivered, Individual Picked Up at Postal Facility

MIDLAND, TX 79705

January 29, 2026, 9:43 am

[See All Tracking History](#)

[What Do USPS Tracking Statuses Mean?](https://faq.usps.com/s/article/Where-is-my-package) (https://faq.usps.com/s/article/Where-is-my-package)

[See More](#) ▾

Tracking Number:

[Remove](#) ✕

9589071052701533171707

[Copy](#)

[Add to Informed Delivery \(https://informedelivery.usps.com/\)](https://informedelivery.usps.com/)

Latest Update

Your item was delivered to the front desk, reception area, or mail room at 11:27 am on January 29, 2026 in SANTA FE, NM 87508.

Get More Out of USPS Tracking:

USPS Tracking Plus®

Delivered

Delivered, Front Desk/Reception/Mail Room

SANTA FE, NM 87508

January 29, 2026, 11:27 am

[See All Tracking History](#)

[What Do USPS Tracking Statuses Mean?](https://faq.usps.com/s/article/Where-is-my-package) (https://faq.usps.com/s/article/Where-is-my-package)

[See More](#) ▾

Tracking Number:

[Remove](#) ✕

9589071052701533171530

[Copy](#)

[Add to Informed Delivery \(https://informedelivery.usps.com/\)](https://informedelivery.usps.com/)

Latest Update

Your item was delivered to the front desk, reception area, or mail room at 1:26 pm on January 29, 2026 in CARLSBAD, NM 88220.

Get More Out of USPS Tracking:

USPS Tracking Plus®

Delivered

Delivered, Front Desk/Reception/Mail Room

CARLSBAD, NM 88220

January 29, 2026, 1:26 pm

[See All Tracking History](#)

[What Do USPS Tracking Statuses Mean?](https://faq.usps.com/s/article/Where-is-my-package) (https://faq.usps.com/s/article/Where-is-my-package)

See More 

Track Another Package

Enter tracking or barcode numbers

Need More Help?

Contact USPS Tracking support for further assistance.

FAQs

**STATE OF NEW MEXICO
ENERGY, MINERALS AND NATURAL RESOURCES DEPARTMENT
OIL CONSERVATION DIVISION**

**APPLICATION FOR SURFACE COMMINGLING
SUBMITTED BY XTO PERMIAN OPERATING, LLC**

ORDER NO. PLC-1098

ORDER

The Director of the New Mexico Oil Conservation Division (“OCD”), having considered the application and the recommendation of the OCD Engineering Bureau, issues the following Order.

FINDINGS OF FACT

1. XTO Permian Operating, LLC (“Applicant”) submitted a complete application to surface commingle the oil and gas production from the pools and leases described in Exhibit A (“Application”).
2. Applicant included a complete list of the wells currently dedicated to each pool and lease.
3. Applicant proposed a method to allocate the oil and gas production to the pools, leases, and wells to be commingled.
4. Applicant certified the commingling of oil and gas production from the pools, leases, and wells will not in reasonable probability reduce the value of the oil and gas production to less than if it had remained segregated.
5. Applicant in the notice for the Application stated that it sought authorization to prospectively include additional pools and leases in accordance with 19.15.12.10(C)(4)(g) NMAC.
6. Applicant stated that it sought authorization to surface commingle and off-lease measure, as applicable, oil and gas production from wells which have not yet been approved to be drilled, but will produce from a pool and lease as described in Exhibit A.
7. Applicant submitted or intends to submit one or more proposed communitization agreement(s) (“Proposed Agreement(s)”) to the BLM or NMSLO, as applicable, identifying the acreage of each lease to be consolidated into a single pooled area (“CA Pooled Area”), as described in Exhibit A.
8. Applicant submitted or intends to submit one or more application(s) to the BLM or NMSLO, as applicable, to form or revise a participating area (“PA”) and has identified the acreage of each lease within each spacing unit (“PA Pooled Area”) to be included in the application(s), as described in Exhibit A.
9. Applicant provided notice of the Application to all persons owning an interest in the oil and gas production to be commingled, including the owners of royalty and overriding royalty

interests, regardless of whether they have a right or option to take their interests in kind, and those persons either submitted a written waiver or did not file an objection to the Application.

10. Applicant provided notice of the Application to the Bureau of Land Management (“BLM”) or New Mexico State Land Office (“NMSLO”), as applicable.

CONCLUSIONS OF LAW

11. OCD has jurisdiction to issue this Order pursuant to the Oil and Gas Act, NMSA 1978, §§ 70-2-6, 70-2-11, 70-2-12, 70-2-16, and 70-2-17, 19.15.12. NMAC, and 19.15.23. NMAC.
12. Applicant satisfied the notice requirements for the Application in accordance with 19.15.12.10(A)(2) NMAC, 19.15.12.10(C)(4)(c) NMAC, and 19.15.12.10(C)(4)(e) NMAC, as applicable.
13. Applicant satisfied the notice requirements for the Application in accordance with 19.15.23.9(A)(5) NMAC and 19.15.23.9(A)(6) NMAC, as applicable.
14. Applicant’s proposed method of allocation, as modified herein, complies with 19.15.12.10(B)(1) NMAC or 19.15.12.10(C)(1) NMAC, as applicable.
15. Commingling of oil and gas production from state, federal, or tribal leases shall not commence until approved by the BLM or NMSLO, as applicable, in accordance with 19.15.12.10(B)(3) NMAC and 19.15.12.10(C)(4)(h) NMAC.
16. Applicant satisfied the notice requirements for the subsequent addition of pools, leases, and wells in the notice for the Application, in accordance with 19.15.12.10(C)(4)(g) NMAC. Subsequent additions of pools, leases, and wells within Applicant’s defined parameters, as modified herein, will not, in reasonable probability, reduce the commingled production’s value or otherwise adversely affect the interest owners in the production to be added.
17. By granting the Application with the conditions specified below, this Order prevents waste and protects correlative rights, public health, and the environment.

ORDER

1. Applicant is authorized to surface commingle oil and gas production from the pools and leases as described in Exhibit A.

Applicant is authorized to surface commingle oil and gas production from the wells included in Exhibit A provided that they produce from a pool and lease described in Exhibit A.

Applicant is authorized to store and measure oil and gas production off-lease, as applicable, from the pools and leases as described in Exhibit A at a central tank battery or gas title transfer meter described in Exhibit A.

Applicant is authorized to surface commingle oil and gas production from wells not included in Exhibit A but that produce from a pool and lease as described in Exhibit A.

Applicant is authorized to store and measure oil and gas production off-lease, as applicable, from wells not included in Exhibit A but that produce from a pool and lease as described in Exhibit A at a central tank battery or gas title transfer meter described in Exhibit A.

2. This Order supersedes Order CTB-1120-A.
3. No later than sixty (60) days after the BLM or NMSLO, as applicable, approves Applicant's paying well determination for a well, Applicant shall submit to the BLM or NMSLO an application to form or revise a PA that includes the PA Pooled Area as defined in Applicant's Form C-102 ("PA Application"). If Applicant fails to submit the PA Application, this Order shall terminate on the following day. No later than sixty (60) days after the BLM or NMSLO approves or denies the PA Application, Applicant shall submit a Form C-103 to OCD with a copy of the decision. If Applicant withdraws or the BLM or NMSLO denies the PA Application, this Order shall terminate on the date of such action. If the BLM or NMSLO approves but modifies the PA Application, Applicant shall comply with the approved PA, and no later than sixty (60) days after such decision, Applicant shall submit a new surface commingling application to OCD to conform this Order with the approved PA if the formation or dedicated lands are modified or if a modification is made that will affect this Order. If Applicant fails to submit the new surface commingling application or OCD denies the new surface commingling application, this Order shall terminate on the date of such action.

Applicant shall allocate the oil and gas production to each lease within a PA Pooled Area in proportion to the acreage that each lease bears to the entire acreage of the PA Pooled Area until the PA Pooled Area is included in a PA. After a PA Pooled Area is included in a PA, the oil and gas production from the PA Pooled Area shall be allocated as required by the BLM's or NMSLO's, as applicable, approval of the PA, including any production that had been allocated previously in accordance with this Order.

4. The allocation of oil and gas production to wells not included in Exhibit A but that produce from a pool and lease as described in Exhibit A shall be determined in the same manner as to wells identified in Exhibit A that produce from that pool and lease, provided that if more than one allocation method is being used or if there are no wells identified in Exhibit A that produce from the pool and lease, then allocation of oil and gas production to each well not included in Exhibit A shall be determined by OCD prior to commingling production from it with the production from another well.
5. The allocation of oil and gas production shall be based on the production life of each well as measured for three periods:
 - a. The initial production period shall be measured from the first production until the earlier of either the peak production rate or thirty (30) days after the first production.

During the initial production period, the oil and gas production for each well identified in Exhibit A shall be allocated using a production curve calculated from a minimum of ten (10) well tests per month, except that any day in which a well test cannot achieve an accurate result due to a temporary change in oil and gas production shall not be included in the computation of time determining the well test schedule. The production curve shall be calculated by interpolating daily production for each day using the known daily production obtained by well tests and shall use a method of interpolation that is at minimum as accurate as maintaining a constant rate of change for each day's production between the known daily production values.

- b. The plateau period shall be measured from the end of the initial production period to the peak decline rate.

During the plateau period, the oil and gas production for each well identified in Exhibit A shall be allocated using a minimum of three (3) well tests per month.

- c. The decline period shall be measured from the end of the plateau period until the well is plugged and abandoned.

During the decline period, the oil and gas production for each well identified in Exhibit A shall be allocated as follows:

- i. a minimum of three (3) well tests per month when the decline rate is greater than twenty-two percent (22%) per month;
- ii. a minimum of two (2) well tests per month when the decline rate is between twenty-two percent (22%) and ten percent (10%) per month; and
- iii. a minimum of one (1) well test per month when the decline rate is less than ten percent (10%) per month.

Upon OCD's request, Applicant shall submit a Form C-103 to the OCD Engineering Bureau that contains the decline rate curve and other relevant information demonstrating the production life of a well.

Applicant shall conduct a well test by separating and metering the oil and gas production from that well for either:

- a. a minimum of twenty-four (24) consecutive hours; or
- b. a combination of nonconsecutive periods that meet the following conditions:
 - i. Each period shall be a minimum of six (6) hours.
 - ii. The total duration of the nonconsecutive periods shall be a minimum of eighteen (18) hours.
 - iii. A vessel shall be allowed to reach equilibrium and a sufficient liquid retention time for accurate measurement achieved prior to beginning the well test.

The well test requirements of this Order shall be suspended for any well shut-in for a period that continues for more than fifteen (15) days until the well commences production.

6. If Applicant recovers oil or gas production from produced water prior to Applicant injecting it or transferring custody of it, then that production shall be allocated to each well in the proportion that it contributed to the total produced water.
7. If Applicant recovers gas production using a vapor recovery unit (VRU), then that gas production shall be allocated to each well in the proportion that it contributed to the total oil production.
8. Applicant shall measure and market the commingled oil at a central tank battery described in Exhibit A in accordance with this Order and 19.15.18.15 NMAC or 19.15.23.8 NMAC.
9. Applicant shall measure and market the commingled gas at a well pad, central delivery point, central tank battery, or gas title transfer meter described in Exhibit A in accordance with this Order and 19.15.19.9 NMAC, provided however that if the gas is vented or flared, and regardless of the reason or authorization pursuant to 19.15.28.8(B) NMAC for such venting or flaring, Applicant shall measure or estimate the gas in accordance with 19.15.28.8(E) NMAC.
10. Applicant shall calibrate the meters used to measure or allocate oil and gas production in accordance with 19.15.12.10(C)(2) NMAC.
11. Applicant shall install and utilize vessels that are appropriately designed to ensure sufficient separation of the fluids and to accurately measure oil and gas production.
12. If the commingling of oil and gas production from any pool, lease, or well reduces the value of the commingled oil and gas production to less than if it had remained segregated, no later than sixty (60) days after the decrease in value has occurred Applicant shall submit a new surface commingling application to OCD to amend this Order to remove the pool, lease, or well whose oil and gas production caused the decrease in value. If Applicant fails to submit a new application, this Order shall terminate on the following day, and if OCD denies the application, this Order shall terminate on the date of such action.
13. Applicant may submit an application to amend this Order to add pools, leases, and subsequently drilled wells with spacing units adjacent to or within the tracts commingled by this Order by submitting a Form C-107-B in accordance with 19.15.12.10(C)(4)(g) NMAC, provided the pools, leases, and subsequently drilled wells are within the identified parameters included in the Application.
14. If a well is not included in Exhibit A but produces from a pool and lease as described in Exhibit A, then Applicant shall submit Forms C-102 and C-103 to the OCD Engineering Bureau after the well has been approved to be drilled and prior to off-lease measuring or commingling oil or gas production from it with the production from another well. The Form

C-103 shall reference this Order and identify the well, proposed method to determine the allocation of oil and gas production to it, and the location(s) that commingling of its production will occur.

15. Applicant shall not commence commingling oil or gas production from state, federal, or tribal leases until approved by the BLM or NMSLO, as applicable.
16. If OCD determines that Applicant has failed to comply with any provision of this Order, OCD may take any action authorized by the Oil and Gas Act or the New Mexico Administrative Code (NMAC).
17. OCD retains jurisdiction of this matter and reserves the right to modify or revoke this Order as it deems necessary.

**STATE OF NEW MEXICO
OIL CONSERVATION DIVISION**

Albert Chang

**ALBERT C. S. CHANG
DIRECTOR**

DATE: 04/10/2026

State of New Mexico
Energy, Minerals and Natural Resources Department

Exhibit A

Order: PLC-1098
Operator: XTO Permian Operating, LLC (373075)
Central Tank Battery: Poker Lake Unit 13 PC Central Vessel Battery
Central Tank Battery Location: UL G, Section 13, Township 24 South, Range 29 East
Gas Title Transfer Meter Location: UL G, Section 13, Township 24 South, Range 29 East

Pools

Pool Name	Pool Code
CEDAR CANYON;BONE SPRING	11520
PIERCE CROSSING; BONE SPRING, EAST	96473
WILDCAT S243006B;LWR BONE SPRING	97753
PURPLE SAGE;WOLFCAMP (GAS)	98220

Leases as defined in 19.15.12.7(C) NMAC

Lease	UL or Q/Q	S-T-R
Poker Lake Exploratory Unit Agreement NMNM 105422429 (071016X)	E/2 NE/4, SE/4	01-24S-29E
	E/2	12-24S-29E
	E/2	13-24S-29E
	E/2	24-24S-29E
BLM Lease NMLC 105511730 (NMLC 0070175A)	E/2 NE/4, SE/4	01-24S-29E
	NE/4	12-24S-29E
BLM Lease NMNM 105469353 (0005912)	SE/4	12-24S-29E
	E/2	13-24S-29E
BLM Lease NMNM 105443079 (NMLC 0069005)	E/2	24-24S-29E

Wells

Well API	Well Name	UL or Q/Q	S-T-R	Pool
30-015-54010	Poker Lake Unit 13 1 PC #105H	E/2	13-24S-29E	98220
		E/2	24-24S-29E	
30-015-53565	Poker Lake Unit 13 1 PC #107H	E/2	13-24S-29E	98220
		E/2	24-24S-29E	
30-015-54012	Poker Lake Unit 13 1 PC #116H	E/2	13-24S-29E	98220
		E/2	24-24S-29E	
30-015-53563	Poker Lake Unit 13 1 PC #118H	E/2	13-24S-29E	98220
		E/2	24-24S-29E	
30-015-53562	Poker Lake Unit 13 1 PC #125H	E/2	13-24S-29E	98220
		E/2	24-24S-29E	
30-015-53554	Poker Lake Unit 13 1 PC #127H	E/2	13-24S-29E	98220
		E/2	24-24S-29E	
30-015-53560	Poker Lake Unit 13 1 PC #158H	E/2	13-24S-29E	98220
		E/2	24-24S-29E	
30-015-54013	Poker Lake Unit 13 1 PC #165H	E/2	13-24S-29E	98220
		E/2	24-24S-29E	

30-015-54014	Poker Lake Unit 13 1 PC #167H	E/2 E/2	13-24S-29E 24-24S-29E	98220
30-015-54359	Poker Lake Unit 13 24 PC #106H	SE/4 E/2 NE/4	1-24S-29E 12-24S-29E 13-24S-29E	98220
30-015-53557	Poker Lake Unit 13 24 PC #116H	SE/4 E/2 NE/4	1-24S-29E 12-24S-29E 13-24S-29E	98220
30-015-54358	Poker Lake Unit 13 24 PC #125H	SE/4 E/2 NE/4	1-24S-29E 12-24S-29E 13-24S-29E	98220
30-015-54357	Poker Lake Unit 13 24 PC #165H	SE/4 E/2 NE/4	1-24S-29E 12-24S-29E 13-24S-29E	98220
30-015-53558	Poker Lake Unit 13 24 PC #108H	SE/4 E/2	13-24S-29E 24-24S-29E	98220
30-015-53556	Poker Lake Unit 13 24 PC #118H	E/2 NE/4 E/2 NE/4	1-24S-29E 12-24S-29E 13-24S-29E	98220
30-015-53553	Poker Lake Unit 13 24 PC #127H	SE/4 E/2	13-24S-29E 24-24S-29E	98220
30-015-54015	Poker Lake Unit 13 24 PC #166H	E/2 NE/4, SE/4 E/2 NE/4	1-24S-29E 12-24S-29E 13-24S-29E	98220
30-015-53552	Poker Lake Unit 13 24 PC #168H	E/2 NE/4 E/2 NE/4	1-24S-29E 12-24S-29E 13-24S-29E	98220
30-015-56753	POKER LAKE UNIT 13 1 PC #507H	S2NE, SE4 E2	13-24S-29E 24-24S-29E	96473
30-015-56743	POKER LAKE UNIT 13 1 PC #705H	S2NE, SE4 E2	13-24S-29E 24-24S-29E	96473
30-015-56744	POKER LAKE UNIT 13 1 PC #707H	S2NE, SE4 E2	13-24S-29E 24-24S-29E	96473
30-015-56745	POKER LAKE UNIT 13 1 PC #708H	S2NE, SE4 E2	13-24S-29E 24-24S-29E	96473
30-015-56746	POKER LAKE UNIT 13 1 PC #805H	S2NE, SE4 E2	13-24S-29E 24-24S-29E	96473
30-015-56747	POKER LAKE UNIT 13 1 PC #806H	S2NE, SE4 E2	13-24S-29E 24-24S-29E	96473
03-015-56748	POKER LAKE UNIT 13 24 PC #705H	W2SE W2SE W2NE, NWSE W2NE	01-24S-29E 12-24S-29E 13-24S-29E 12-24S-29E	11520 96473 97753
30-015-56749	POKER LAKE UNIT 13 24 PC #707H	E2E2 E2SE E2NE, NESE E2NE	01-24S-29E 12-24S-29E 13-24S-29E 12-24S-29E	11520 96473 97753

30-015-56750	POKER LAKE UNIT 13 24 PC #708H	E2E2	01-24S-29E	11520
		E2SE	12-24S-29E	96473
		E2NE, NESE	13-24S-29E	
		E2NE	12-24S-29E	97753
30-015-56751	POKER LAKE UNIT 13 24 PC #805H	W2SE	01-24S-29E	11520
		W2SE	12-24S-29E	96473
		W2NE, NWSE	13-24S-29E	
		W2NE	12-24S-29E	97753
30-015-56752	POKER LAKE UNIT 13 24 PC #806H	E2E2	01-24S-29E	11520
		E2SE	12-24S-29E	96473
		E2NE, NESE	13-24S-29E	
		E2NE	12-24S-29E	97753

Sante Fe Main Office
Phone: (505) 476-3441

General Information
Phone: (505) 629-6116

Online Phone Directory
<https://www.emnrd.nm.gov/ocd/contact-us>

State of New Mexico
Energy, Minerals and Natural Resources
Oil Conservation Division
1220 S. St Francis Dr.
Santa Fe, NM 87505

CONDITIONS

Action 562509

CONDITIONS

Operator: XTO PERMIAN OPERATING LLC. 3617 Big Spring St. MIDLAND, TX 79705	OGRID: 373075
	Action Number: 562509
	Action Type: [C-107] Surface Commingle or Off-Lease (C-107B)

CONDITIONS

Created By	Condition	Condition Date
sarah.clelland	Please review the content of the order to ensure you are familiar with the authorities granted and any conditions of approval. If you have any questions regarding this matter, please email us at OCD.Engineer@emnrd.nm.gov .	4/14/2026