

PERMIAN
RESOURCES

300 N. MARIENFELD STREET, SUITE 1000
MIDLAND, TX 79701

OFFICE 432.695.4222
FAX 432.695.4063

April 9, 2025

Mr. Dean McClure
1220 S. St. Francis Dr.
Santa Fe, New Mexico 87505

RE: Application of Permian Resources Operating, LLC to authorize surface commingling at the Airstream 24 CTB located in the in the SWSW quarter of section 13, T22S, R34E, Lea County, New Mexico.

Mr. McClure,

Pursuant to Division Rule 19.15.12.10, Permian Resources Operating, LLC. respectfully requests administrative approval to Surface Commingle at a Common Central Tank Battery. We would like to add additional leases to the existing order CTB-880.

API Number	Well Name	UL or Q/Q	STR	Pool Name	Pool Code
3002545155	AIRSTREAM 24 STATE COM 501H	SWSW	M-13-22S-34E	Ojo Chiso; Bone Spring, South	97293
3002545181	AIRSTREAM 24 STATE COM 502H	SWSW	M-13-22S-34E	Ojo Chiso; Bone Spring, South	97293
3002553702	AIRSTREAM 24 STATE COM 301H	SWSW	M-13-22S-34E	Ojo Chiso; Bone Spring, South	97293
3002553703	AIRSTREAM 24 STATE COM 302H	SWSW	M-13-22S-34E	Ojo Chiso; Bone Spring, South	97293
3002553704	AIRSTREAM 24 STATE COM 303H	SWSE	O-13-22S-34E	Ojo Chiso; Bone Spring, South	97293
3002553705	AIRSTREAM 24 STATE COM 304H	SWSE	O-13-22S-34E	Ojo Chiso; Bone Spring, South	97293

Each well is metered individually. This action will prevent waste, promote conservation and protect correlative rights. These wells are operated by Permian Resources Operating, LLC. with the diverse ownership. Pursuant Division Rule 19.15.12.10, the interest owners that are to be notified are listed on the attached notice list and are being sent a copy of this application by certified mail, return receipt.

Also Attached:

- NMOCD Form C-107B
- NMOCD Administrative Application Checklist
- Lease plat shows State Lease boundaries
- Production Flow diagram
- NMOCD form C-102 well plats for each well
- A copy of notice letter to interest owners and Notice List

For future addition of wells, leases, and pools to this commingling operation, notice shall be given to the interest owners in the wells, leases or pools to be added, in accordance with the Division Rule 19.15.12.10 C (4)(g) NMAC.

Sincerely,

Kanicia Schlichting
Regulatory Specialist
432-400-0185

RECEIVED:	REVIEWER:	TYPE:	APP NO:
-----------	-----------	-------	---------

ABOVE THIS TABLE FOR OCD DIVISION USE ONLY

NEW MEXICO OIL CONSERVATION DIVISION
 - Geological & Engineering Bureau -
 1220 South St. Francis Drive, Santa Fe, NM 87505



ADMINISTRATIVE APPLICATION CHECKLIST

THIS CHECKLIST IS MANDATORY FOR ALL ADMINISTRATIVE APPLICATIONS FOR EXCEPTIONS TO DIVISION RULES AND REGULATIONS WHICH REQUIRE PROCESSING AT THE DIVISION LEVEL IN SANTA FE

Applicant: _____ **OGRID Number:** _____
Well Name: _____ **API:** _____
Pool: _____ **Pool Code:** _____

SUBMIT ACCURATE AND COMPLETE INFORMATION REQUIRED TO PROCESS THE TYPE OF APPLICATION INDICATED BELOW

- 1) **TYPE OF APPLICATION:** Check those which apply for [A]
 A. Location – Spacing Unit – Simultaneous Dedication
 NSL NSP (PROJECT AREA) NSP (PRORATION UNIT) SD
- B. Check one only for [I] or [II]
 [I] Commingling – Storage – Measurement
 DHC CTB PLC PC OLS OLM
 [II] Injection – Disposal – Pressure Increase – Enhanced Oil Recovery
 WFX PMX SWD IPI EOR PPR

- 2) **NOTIFICATION REQUIRED TO:** Check those which apply.
 A. Offset operators or lease holders
 B. Royalty, overriding royalty owners, revenue owners
 C. Application requires published notice
 D. Notification and/or concurrent approval by SLO
 E. Notification and/or concurrent approval by BLM
 F. Surface owner
 G. For all of the above, proof of notification or publication is attached, and/or,
 H. No notice required

<u>FOR OCD ONLY</u>	
<input type="checkbox"/>	Notice Complete
<input type="checkbox"/>	Application Content Complete

3) **CERTIFICATION:** I hereby certify that the information submitted with this application for administrative approval is **accurate** and **complete** to the best of my knowledge. I also understand that **no action** will be taken on this application until the required information and notifications are submitted to the Division.

Note: Statement must be completed by an individual with managerial and/or supervisory capacity.

 Print or Type Name

Cassie Evans

 Signature

Date

Phone Number

e-mail Address

API Number	Well Name	UL or Q/Q	STR	Pool Name	Pool Code	Status
3002545155	AIRSTREAM 24 STATE COM 501H	SWSW	M-13-22S-34E	Ojo Chiso; Bone Spring, South	97293	Producing
3002545181	AIRSTREAM 24 STATE COM 502H	SWSW	M-13-22S-34E	Ojo Chiso; Bone Spring, South	97293	Producing
3002553702	AIRSTREAM 24 STATE COM 301H	SWSW	M-13-22S-34E	Ojo Chiso; Bone Spring, South	97293	New
3002553703	AIRSTREAM 24 STATE COM 302H	SWSW	M-13-22S-34E	Ojo Chiso; Bone Spring, South	97293	New
3002553704	AIRSTREAM 24 STATE COM 303H	SWSE	O-13-22S-34E	Ojo Chiso; Bone Spring, South	97293	New
3002553705	AIRSTREAM 24 STATE COM 304H	SWSE	O-13-22S-34E	Ojo Chiso; Bone Spring, South	97293	New

District I
1625 N. French Drive, Hobbs, NM 88240
District II
811 S. First St., Artesia, NM 88210
District III
1000 Rio Brazos Road, Aztec, NM 87410
District IV
1220 S. St Francis Dr, Santa Fe, NM
87505

State of New Mexico
Energy, Minerals and Natural Resources Department

Form C-107-B
Revised August 1, 2011

OIL CONSERVATION DIVISION
1220 S. St Francis Drive
Santa Fe, New Mexico 87505

Submit the original application to the Santa Fe office with one copy to the appropriate District Office.

APPLICATION FOR SURFACE COMMINGLING (DIVERSE OWNERSHIP)

OPERATOR NAME: Earthstone Operating, LLC
OPERATOR ADDRESS: 300 N. Marienfeld St., Suite 1000, Midland, TX 79701
APPLICATION TYPE:

Pool Commingling Lease Commingling Pool and Lease Commingling Off-Lease Storage and Measurement (Only if not Surface Commingled)

LEASE TYPE: Fee State Federal

Is this an Amendment to existing Order? Yes No If "Yes", please include the appropriate Order No. CTB-880
Have the Bureau of Land Management (BLM) and State Land office (SLO) been notified in writing of the proposed commingling
 Yes No

(A) POOL COMMINGLING
Please attach sheets with the following information

(1) Pool Names and Codes	Gravities / BTU of Non-Commingled Production	Calculated Gravities / BTU of Commingled Production		Calculated Value of Commingled Production	Volumes

(2) Are any wells producing at top allowables? Yes No
(3) Has all interest owners been notified by certified mail of the proposed commingling? Yes No.
(4) Measurement type: Metering Other (Specify)
(5) Will commingling decrease the value of production? Yes No If "yes", describe why commingling should be approved

(B) LEASE COMMINGLING
Please attach sheets with the following information

(1) Pool Name and Code. Ojo Chiso; Bone Spring, South 97293
(2) Is all production from same source of supply? Yes No
(3) Has all interest owners been notified by certified mail of the proposed commingling? Yes No
(4) Measurement type: Metering Other (Specify)

(C) POOL and LEASE COMMINGLING
Please attach sheets with the following information

(1) Complete Sections A and E.

(D) OFF-LEASE STORAGE and MEASUREMENT
Please attached sheets with the following information

(1) Is all production from same source of supply? Yes No
(2) Include proof of notice to all interest owners.

(E) ADDITIONAL INFORMATION (for all application types)
Please attach sheets with the following information

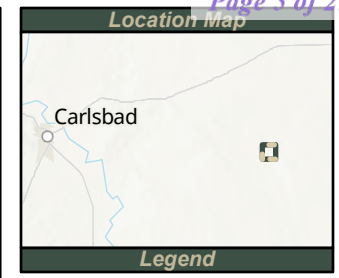
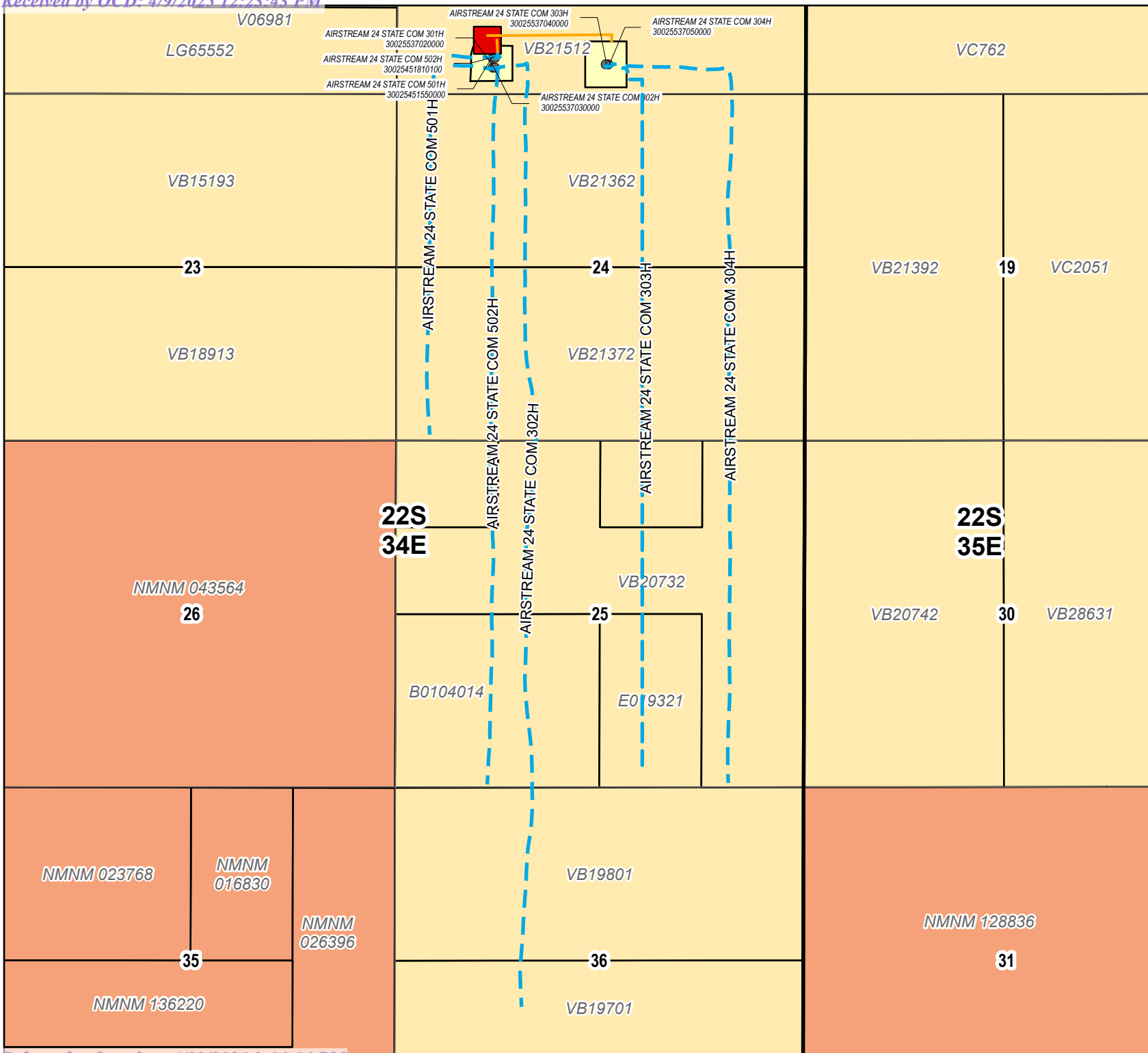
(1) A schematic diagram of facility, including legal location.
(2) A plat with lease boundaries showing all well and facility locations. Include lease numbers if Federal or State lands are involved.
(3) Lease Names, Lease and Well Numbers, and API Numbers.

I hereby certify that the information above is true and complete to the best of my knowledge and belief.

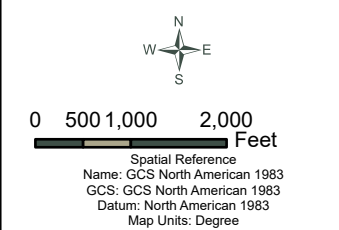
SIGNATURE: K. Schlichting TITLE: Regulatory Specialist DATE: 4/9/25

TYPE OR PRINT NAME Kanicia Schlichting TELEPHONE NO.: 432-400-0185

E-MAIL ADDRESS: kanicia.schlichting@permianres.com



- State Leases
- Federal Leases
- Fee Leases
- Wellbores
- Communitized Areas
- Flowlines
- Central Tank Battery
- SHL
- Facility / Pads



This map and its contents are not a legal surveyed document. It is meant for the use of Permian Resources and its employees and cannot be shared without expressed written authorization.

PERMIAN RESOURCES

Airstream Commingling

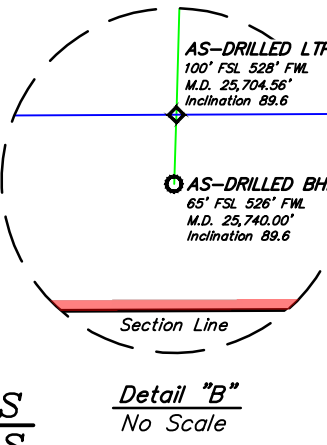
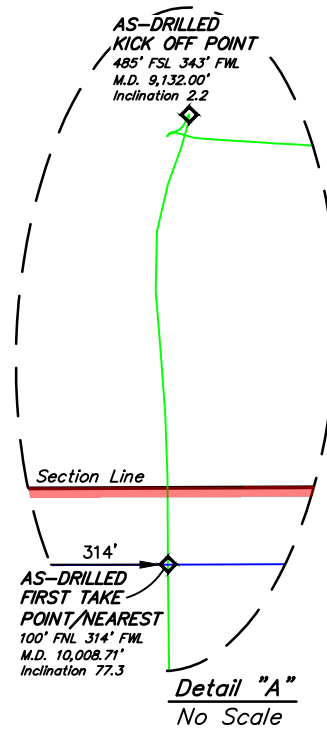
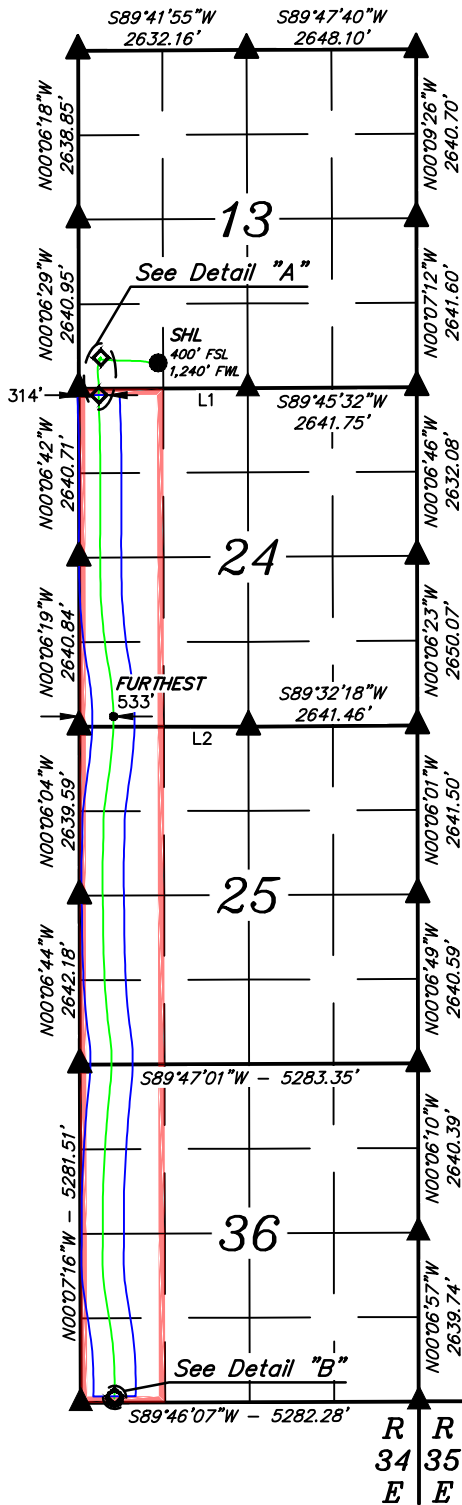
Lea County, New Mexico

Created Date: 3/24/2025 Revised Date: 3/24/2025

Author: K. Schlichting Drafter: T. Douglass

Path: X:\GIS\MapServer\workspace\Commingling\Projects\Commingling\template.aprx

Property Name AIRSTREAM 24 STATE COM	Well Number 301H	Drawn By L.T.T. 02-10-25	Revised By REV. 1 D.M.C. 02-11-25 (ADD & REMOVE DIMENSIONS)
---	---------------------	-----------------------------	--



APPROXIMATE WELLBORE MEASURED DEPTH DISTANCE FROM FTP TO LTP	
TRACT	DISTANCE
SEC. 24	5,199.25'
SEC. 25	5,296.16'
SEC. 36	5,200.44'
TOTAL	15,695.85'

- = SURFACE HOLE LOCATION
- ◆ = AS-DRILLED KICK OFF POINT/FIRST TAKE POINT/LAST TAKE POINT
- = AS-DRILLED BOTTOM HOLE LOCATION
- ▲ = SECTION CORNER LOCATED
- = HORIZONTAL SPACING UNIT
- = AS-DRILLED WELLBORE
- = 330' BUFFER FROM WELLBORE

NAD 83 (SURFACE HOLE LOCATION)	FOOTAGE
LATITUDE = 32°23'07.98" (32.385550°)	400' FSL
LONGITUDE = -103°25'41.46" (-103.428183°)	1,240' FWL
NAD 27 (SURFACE HOLE LOCATION)	
LATITUDE = 32°23'07.53" (32.385426°)	
LONGITUDE = -103°25'39.74" (-103.427705°)	
STATE PLANE NAD 83 (N.M. EAST)	
N: 505176.91' E: 820747.85'	
STATE PLANE NAD 27 (N.M. EAST)	
N: 505116.25' E: 779564.44'	

NAD 83 (AS-DRILLED KOP)	FOOTAGE
LATITUDE = 32°23'08.83" (32.385786°)	485' FSL
LONGITUDE = -103°25'51.92" (-103.431089°)	343' FWL
NAD 27 (AS-DRILLED KOP)	
LATITUDE = 32°23'08.38" (32.385661°)	
LONGITUDE = -103°25'50.20" (-103.430611°)	
STATE PLANE NAD 83 (N.M. EAST)	
N: 505254.96' E: 819849.92'	
STATE PLANE NAD 27 (N.M. EAST)	
N: 505194.30' E: 778666.54'	

NAD 83 (AS-DRILLED FTP)	FOOTAGE
LATITUDE = 32°23'03.04" (32.384177°)	100' FNL
LONGITUDE = -103°25'52.27" (-103.431187°)	314' FWL
NAD 27 (AS-DRILLED FTP)	
LATITUDE = 32°23'02.59" (32.384052°)	
LONGITUDE = -103°25'50.55" (-103.430708°)	
STATE PLANE NAD 83 (N.M. EAST)	
N: 504669.35' E: 819824.78'	
STATE PLANE NAD 27 (N.M. EAST)	
N: 504608.71' E: 778641.39'	

NAD 83 (AS-DRILLED LTP)	FOOTAGE
LATITUDE = 32°20'28.26" (32.341182°)	100' FSL
LONGITUDE = -103°25'50.20" (-103.430610°)	528' FWL
NAD 27 (AS-DRILLED LTP)	
LATITUDE = 32°20'27.81" (32.341058°)	
LONGITUDE = -103°25'48.48" (-103.430133°)	
STATE PLANE NAD 83 (N.M. EAST)	
N: 489029.13' E: 820134.70'	
STATE PLANE NAD 27 (N.M. EAST)	
N: 488968.93' E: 778950.99'	

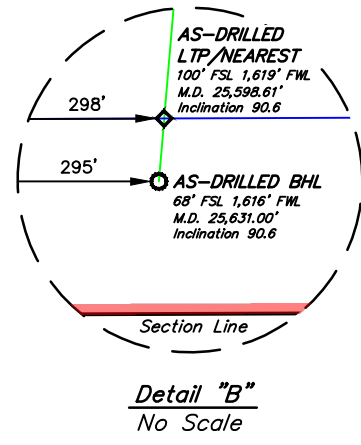
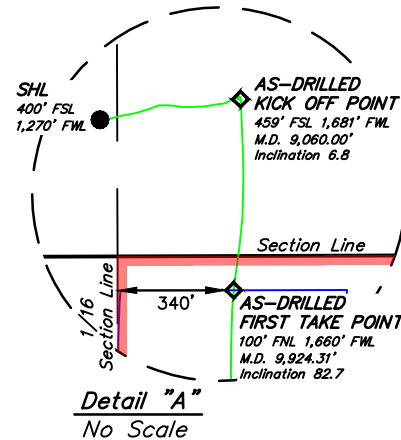
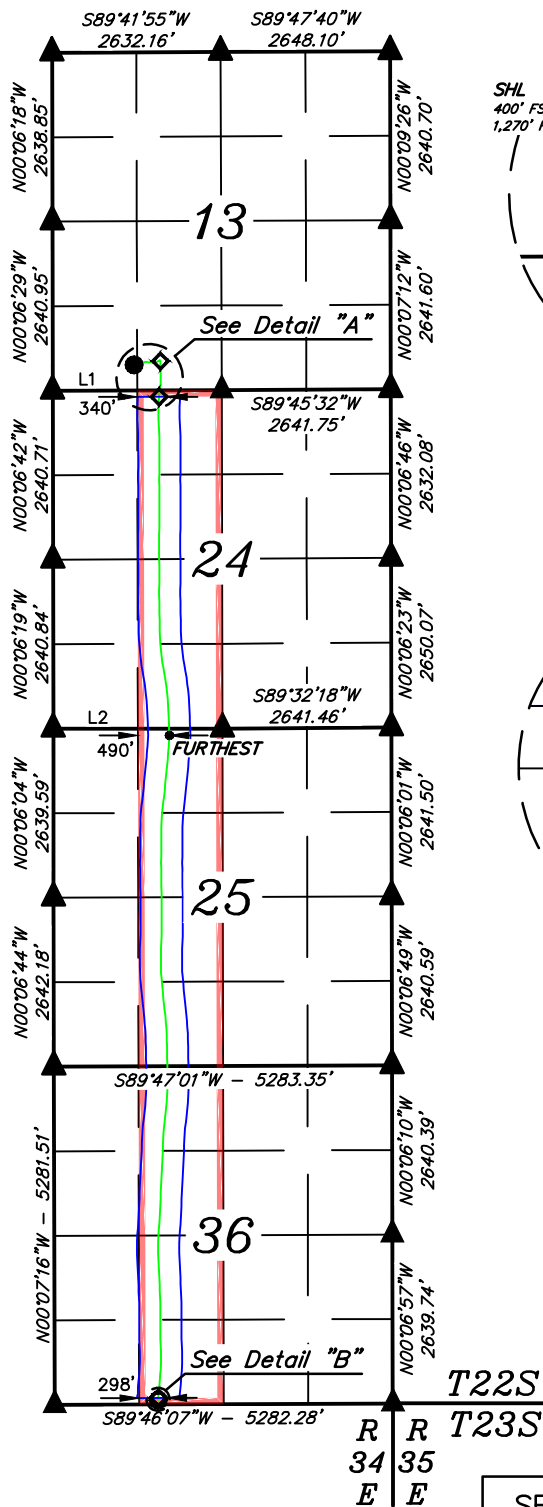
NAD 83 (AS-DRILLED BHL)	FOOTAGE
LATITUDE = 32°20'27.91" (32.341085°)	65' FSL
LONGITUDE = -103°25'50.21" (-103.430615°)	526' FWL
NAD 27 (AS-DRILLED BHL)	
LATITUDE = 32°20'27.46" (32.340961°)	
LONGITUDE = -103°25'48.49" (-103.430137°)	
STATE PLANE NAD 83 (N.M. EAST)	
N: 488993.71' E: 820133.60'	
STATE PLANE NAD 27 (N.M. EAST)	
N: 488933.51' E: 778949.89'	

SECTION LINE TABLE		
LINE	DIRECTION	LENGTH
L1	S89°47'20"W	2641.47'
L2	N89°58'41"W	2641.91'



- NOTE:
- Distances referenced on plat to section lines are perpendicular.
 - Basis of Bearings is a Transverse Mercator Projection with a Central Meridian of W103°53'00" (NAD 83)
 - Wellbore data provided by Permian Resources Operating, LLC.
 - As-Drilled well head has not been field verified.

Property Name AIRSTREAM 24 STATE COM	Well Number 302H	Drawn By L.T.T. 02-10-25	Revised By REV. 1 D.M.C. 02-11-25 (ADD & REMOVE DIMENSIONS)
---	---------------------	-----------------------------	--



TRACT	DISTANCE
SEC. 24	5,199.59'
SEC. 25	5,285.21'
SEC. 36	5,189.50'
TOTAL	15,674.30'

- = SURFACE HOLE LOCATION
- ◆ = AS-DRILLED KICK OFF POINT/FIRST TAKE POINT/LAST TAKE POINT
- = AS-DRILLED BOTTOM HOLE LOCATION
- ▲ = SECTION CORNER LOCATED
- = HORIZONTAL SPACING UNIT
- = AS-DRILLED WELLBORE
- = 330' BUFFER FROM WELLBORE

NAD 83 (SURFACE HOLE LOCATION)	FOOTAGE
LATITUDE = 32°23'07.98" (32.385550°)	400' FSL
LONGITUDE = -103°25'41.11" (-103.428086°)	1,270' FWL
NAD 27 (SURFACE HOLE LOCATION)	
LATITUDE = 32°23'07.53" (32.385426°)	
LONGITUDE = -103°25'39.39" (-103.427607°)	
STATE PLANE NAD 83 (N.M. EAST)	
N: 505177.15' E: 820777.84'	
STATE PLANE NAD 27 (N.M. EAST)	
N: 505116.49' E: 779594.44'	

NAD 83 (AS-DRILLED KOP)	FOOTAGE
LATITUDE = 32°23'08.56" (32.385711°)	459' FSL
LONGITUDE = -103°25'36.31" (-103.426754°)	1,681' FWL
NAD 27 (AS-DRILLED KOP)	
LATITUDE = 32°23'08.11" (32.385586°)	
LONGITUDE = -103°25'34.59" (-103.426276°)	
STATE PLANE NAD 83 (N.M. EAST)	
N: 505239.04' E: 821188.44'	
STATE PLANE NAD 27 (N.M. EAST)	
N: 505178.37' E: 780005.03'	

NAD 83 (AS-DRILLED FTP)	FOOTAGE
LATITUDE = 32°23'03.03" (32.384175°)	100' FNL
LONGITUDE = -103°25'36.57" (-103.426826°)	1,660' FWL
NAD 27 (AS-DRILLED FTP)	
LATITUDE = 32°23'02.58" (32.384050°)	
LONGITUDE = -103°25'34.85" (-103.426348°)	
STATE PLANE NAD 83 (N.M. EAST)	
N: 504679.97' E: 821170.97'	
STATE PLANE NAD 27 (N.M. EAST)	
N: 504619.32' E: 779987.54'	

NAD 83 (AS-DRILLED LTP)	FOOTAGE
LATITUDE = 32°20'28.25" (32.341182°)	100' FSL
LONGITUDE = -103°25'37.48" (-103.427078°)	1,619' FWL
NAD 27 (AS-DRILLED LTP)	
LATITUDE = 32°20'27.81" (32.341057°)	
LONGITUDE = -103°25'35.76" (-103.426601°)	
STATE PLANE NAD 83 (N.M. EAST)	
N: 489038.12' E: 821225.71'	
STATE PLANE NAD 27 (N.M. EAST)	
N: 488977.91' E: 780041.98'	

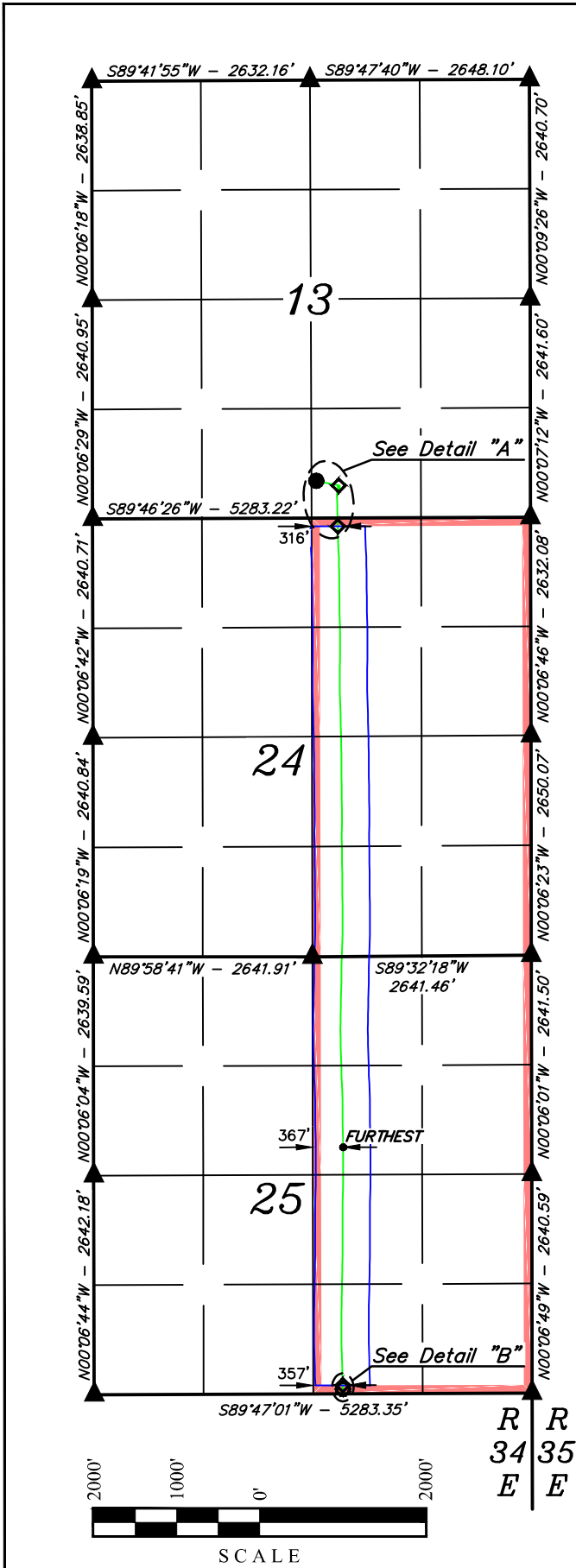
NAD 83 (AS-DRILLED BHL)	FOOTAGE
LATITUDE = 32°20'27.94" (32.341093°)	68' FSL
LONGITUDE = -103°25'37.51" (-103.427087°)	1,616' FWL
NAD 27 (AS-DRILLED BHL)	
LATITUDE = 32°20'27.49" (32.340969°)	
LONGITUDE = -103°25'35.80" (-103.426610°)	
STATE PLANE NAD 83 (N.M. EAST)	
N: 489005.84' E: 821223.15'	
STATE PLANE NAD 27 (N.M. EAST)	
N: 488945.63' E: 780039.41'	

LINE	DIRECTION	LENGTH
L1	S89°47'20"W	2641.47'
L2	N89°58'41"W	2641.91'



- NOTE:
- Distances referenced on plat to section lines are perpendicular.
 - Basis of Bearings is a Transverse Mercator Projection with a Central Meridian of W103°53'00" (NAD 83)
 - Wellbore data provided by Permian Resources Operating, LLC.
 - As-Drilled well head has not been field verified.

Property Name AIRSTREAM 24 STATE COM	Well Number 303H	Drawn By L.T.T. 02-10-25	Revised By REV. 1 D.M.C. 02-11-25 (ADD & REMOVE DIMENSIONS)
---	---------------------	-----------------------------	--



- = SURFACE HOLE LOCATION
- ◆ = AS-DRILLED KICK OFF POINT/FIRST TAKE POINT/LAST TAKE POINT
- = AS-DRILLED BOTTOM HOLE LOCATION
- ▲ = SECTION CORNER LOCATED
- = HORIZONTAL SPACING UNIT
- = AS-DRILLED WELLBORE
- = 330' BUFFER FROM WELLBORE

NOTE:

- Distances referenced on plat to section lines are perpendicular.
- Basis of Bearings is a Transverse Mercator Projection with a Central Meridian of W103°53'00" (NAD 83)
- Wellbore data provided by Permian Resources Operating, LLC.
- As-Drilled well head has not been field verified.

APPROXIMATE WELLBORE MEASURED DEPTH DISTANCE FROM FTP TO LTP	
TRACT	DISTANCE
SEC. 24	5,194.80'
SEC. 25	5,174.47'
TOTAL	10,369.27'

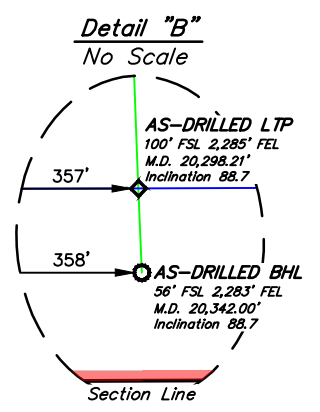
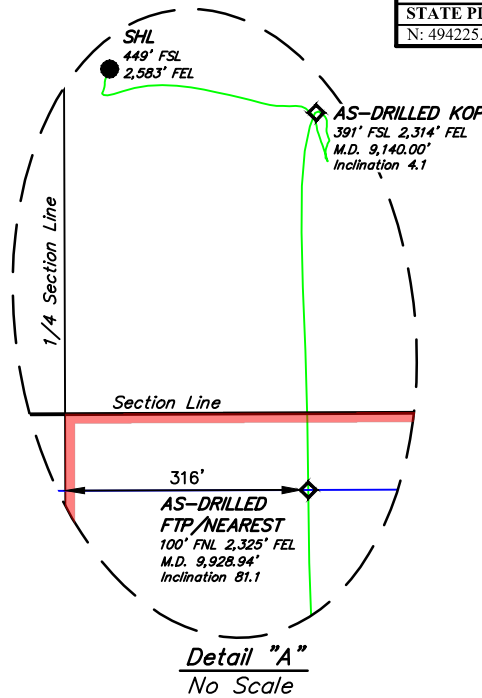
NAD 83 (SURFACE HOLE LOCATION)		FOOTAGES
LATITUDE = 32°23'08.46" (32.385685°)	449' FSL	2,583' FEL
LONGITUDE = -103°25'24.43" (-103.423454°)		
NAD 27 (SURFACE HOLE LOCATION)		
LATITUDE = 32°23'08.02" (32.385560°)		
LONGITUDE = -103°25'22.71" (-103.422976°)		
STATE PLANE NAD 83 (N.M. EAST)		
N: 505238.15' E: 822207.25'		
STATE PLANE NAD 27 (N.M. EAST)		
N: 505177.47' E: 781023.81'		

NAD 83 (AS-DRILLED KOP)		FOOTAGES
LATITUDE = 32°23'07.89" (32.385525°)	391' FSL	2,314' FEL
LONGITUDE = -103°25'21.30" (-103.422584°)		
NAD 27 (AS-DRILLED KOP)		
LATITUDE = 32°23'07.44" (32.385401°)		
LONGITUDE = -103°25'19.58" (-103.422106°)		
STATE PLANE NAD 83 (N.M. EAST)		
N: 505182.35' E: 822476.30'		
STATE PLANE NAD 27 (N.M. EAST)		
N: 505121.68' E: 781292.84'		

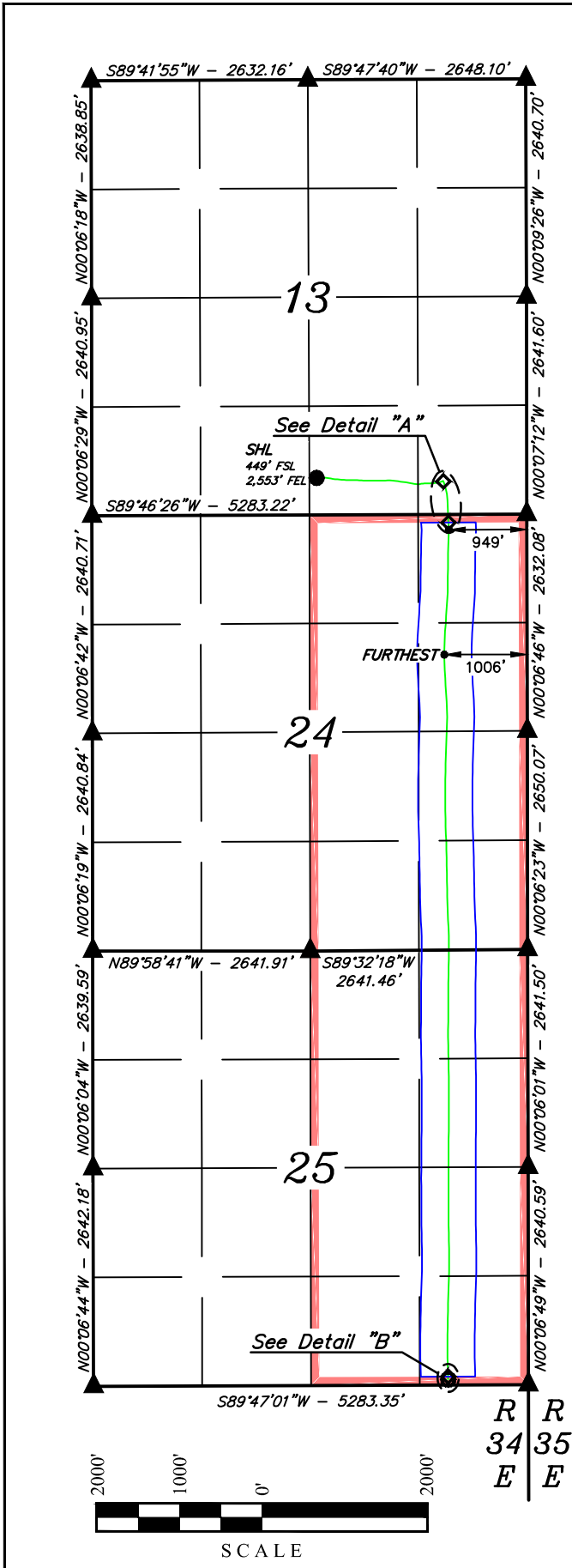
NAD 83 (AS-DRILLED FTP)		FOOTAGES
LATITUDE = 32°23'03.03" (32.384175°)	100' FNL	2,325' FEL
LONGITUDE = -103°25'21.45" (-103.422624°)		
NAD 27 (AS-DRILLED FTP)		
LATITUDE = 32°23'02.58" (32.384050°)		
LONGITUDE = -103°25'19.73" (-103.422146°)		
STATE PLANE NAD 83 (N.M. EAST)		
N: 504690.99' E: 822468.15'		
STATE PLANE NAD 27 (N.M. EAST)		
N: 504630.32' E: 781284.69'		

NAD 83 (AS-DRILLED LTP)		FOOTAGES
LATITUDE = 32°21'20.50" (32.355693°)	100' FSL	2,285' FEL
LONGITUDE = -103°25'21.27" (-103.422574°)		
NAD 27 (AS-DRILLED LTP)		
LATITUDE = 32°21'20.05" (32.35569°)		
LONGITUDE = -103°25'19.55" (-103.422096°)		
STATE PLANE NAD 83 (N.M. EAST)		
N: 494329.28' E: 822571.85'		
STATE PLANE NAD 27 (N.M. EAST)		
N: 494268.91' E: 781388.18'		

NAD 83 (AS-DRILLED BHL)		FOOTAGES
LATITUDE = 32°21'20.06" (32.355573°)	56' FSL	2,283' FEL
LONGITUDE = -103°25'21.25" (-103.422569°)		
NAD 27 (AS-DRILLED BHL)		
LATITUDE = 32°21'19.61" (32.355448°)		
LONGITUDE = -103°25'19.53" (-103.422092°)		
STATE PLANE NAD 83 (N.M. EAST)		
N: 494285.54' E: 822573.72'		
STATE PLANE NAD 27 (N.M. EAST)		
N: 494225.17' E: 781390.05'		



Property Name AIRSTREAM 24 STATE COM	Well Number 304H	Drawn By L.T.T. 02-10-25	Revised By REV. 1 D.M.C. 02-11-25 (ADD & REMOVE DIMENSIONS)
---	---------------------	-----------------------------	--

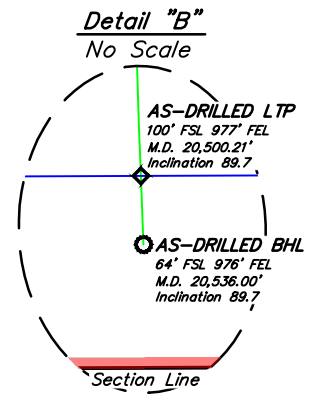
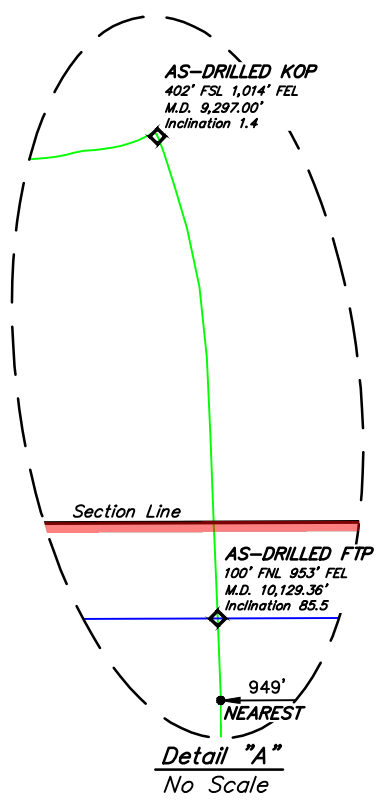


- = SURFACE HOLE LOCATION
- ◇ = AS-DRILLED KICK OFF POINT/FIRST TAKE POINT/LAST TAKE POINT
- = AS-DRILLED BOTTOM HOLE LOCATION
- ▲ = SECTION CORNER LOCATED
- = HORIZONTAL SPACING UNIT
- = AS-DRILLED WELLBORE
- = 330' BUFFER FROM WELLBORE

NOTE:

- Distances referenced on plat to section lines are perpendicular.
- Basis of Bearings is a Transverse Mercator Projection with a Central Meridian of W103°53'00" (NAD 83)
- Wellbore data provided by Permian Resources Operating, LLC.
- As-Drilled well head has not been field verified.

APPROXIMATE WELLBORE MEASURED DEPTH DISTANCE FROM FTP TO LTP	
TRACT	DISTANCE
SEC. 24	5,190.77'
SEC. 25	5,180.08'
TOTAL	10,370.85'



NAD 83 (SURFACE HOLE LOCATION)		FOOTAGES
LATITUDE = 32°23'08.46" (32.385685°)	LONGITUDE = -103°25'24.08" (-103.423357°)	449' FSL
NAD 27 (SURFACE HOLE LOCATION)		2,553' FEL
LATITUDE = 32°23'08.02" (32.385560°)	LONGITUDE = -103°25'22.36" (-103.422879°)	
STATE PLANE NAD 83 (N.M. EAST)		
N: 505238.38'	E: 822237.24'	
STATE PLANE NAD 27 (N.M. EAST)		
N: 505177.70'	E: 781053.80'	

NAD 83 (AS-DRILLED KOP)		FOOTAGES
LATITUDE = 32°23'07.99" (32.385554°)	LONGITUDE = -103°25'06.15" (-103.418374°)	402' FSL
NAD 27 (AS-DRILLED KOP)		1,014' FEL
LATITUDE = 32°23'07.55" (32.385430°)	LONGITUDE = -103°25'04.43" (-103.417896°)	
STATE PLANE NAD 83 (N.M. EAST)		
N: 505204.03'	E: 823775.91'	
STATE PLANE NAD 27 (N.M. EAST)		
N: 505143.35'	E: 782592.42'	

NAD 83 (AS-DRILLED FTP)		FOOTAGES
LATITUDE = 32°23'03.02" (32.384173°)	LONGITUDE = -103°25'05.44" (-103.418178°)	100' FNL
NAD 27 (AS-DRILLED FTP)		953' FEL
LATITUDE = 32°23'02.58" (32.384049°)	LONGITUDE = -103°25'03.72" (-103.417700°)	
STATE PLANE NAD 83 (N.M. EAST)		
N: 504702.18'	E: 823840.77'	
STATE PLANE NAD 27 (N.M. EAST)		
N: 504641.51'	E: 782657.27'	

NAD 83 (AS-DRILLED LTP)		FOOTAGES
LATITUDE = 32°21'20.49" (32.355691°)	LONGITUDE = -103°25'06.02" (-103.418340°)	100' FSL
NAD 27 (AS-DRILLED LTP)		977' FEL
LATITUDE = 32°21'20.04" (32.355567°)	LONGITUDE = -103°25'04.31" (-103.417863°)	
STATE PLANE NAD 83 (N.M. EAST)		
N: 494339.71'	E: 823879.18'	
STATE PLANE NAD 27 (N.M. EAST)		
N: 494279.33'	E: 782695.48'	

NAD 83 (AS-DRILLED BHL)		FOOTAGES
LATITUDE = 32°21'20.13" (32.355593°)	LONGITUDE = -103°25'06.01" (-103.418336°)	64' FSL
NAD 27 (AS-DRILLED BHL)		976' FEL
LATITUDE = 32°21'19.69" (32.355468°)	LONGITUDE = -103°25'04.29" (-103.417859°)	
STATE PLANE NAD 83 (N.M. EAST)		
N: 494303.95'	E: 823880.70'	
STATE PLANE NAD 27 (N.M. EAST)		
N: 494243.57'	E: 782697.00'	

District I
1625 N. French Dr., Hobbs, NM 88240
Phone: (575) 393-6161 Fax: (575) 393-0720
District II
811 S. First St., Artesia, NM 88210
Phone: (575) 748-1283 Fax: (575) 748-9720
District III
1000 Rio Brazos Road, Aztec, NM 87410
Phone: (505) 334-6178 Fax: (505) 334-6170
District IV
1220 S. St. Francis Dr., Santa Fe, NM 87505
Phone: (505) 476-3460 Fax: (505) 476-3462

State of New Mexico
Energy, Minerals & Natural Resources Department
OIL CONSERVATION DIVISION
1220 South St. Francis Dr.
Santa Fe, NM 87505

Form C-102
Revised August 1, 2011
Submit one copy to appropriate
District Office

AMENDED REPORT

WELL LOCATION AND ACREAGE DEDICATION PLAT

¹ API Number 30-025-45155		² Pool Code 97293		³ Pool Name Ojo Chiso; Bone Spring, South	
⁴ Property Code 322320		⁵ Property Name AIRSTREAM 24 STATE COM		⁶ Well Number #501H	
⁷ OGRID No. 372165		⁸ Operator Name CENTENNIAL RESOURCE PRODUCTION, LLC		⁹ Elevation 3498.2'	

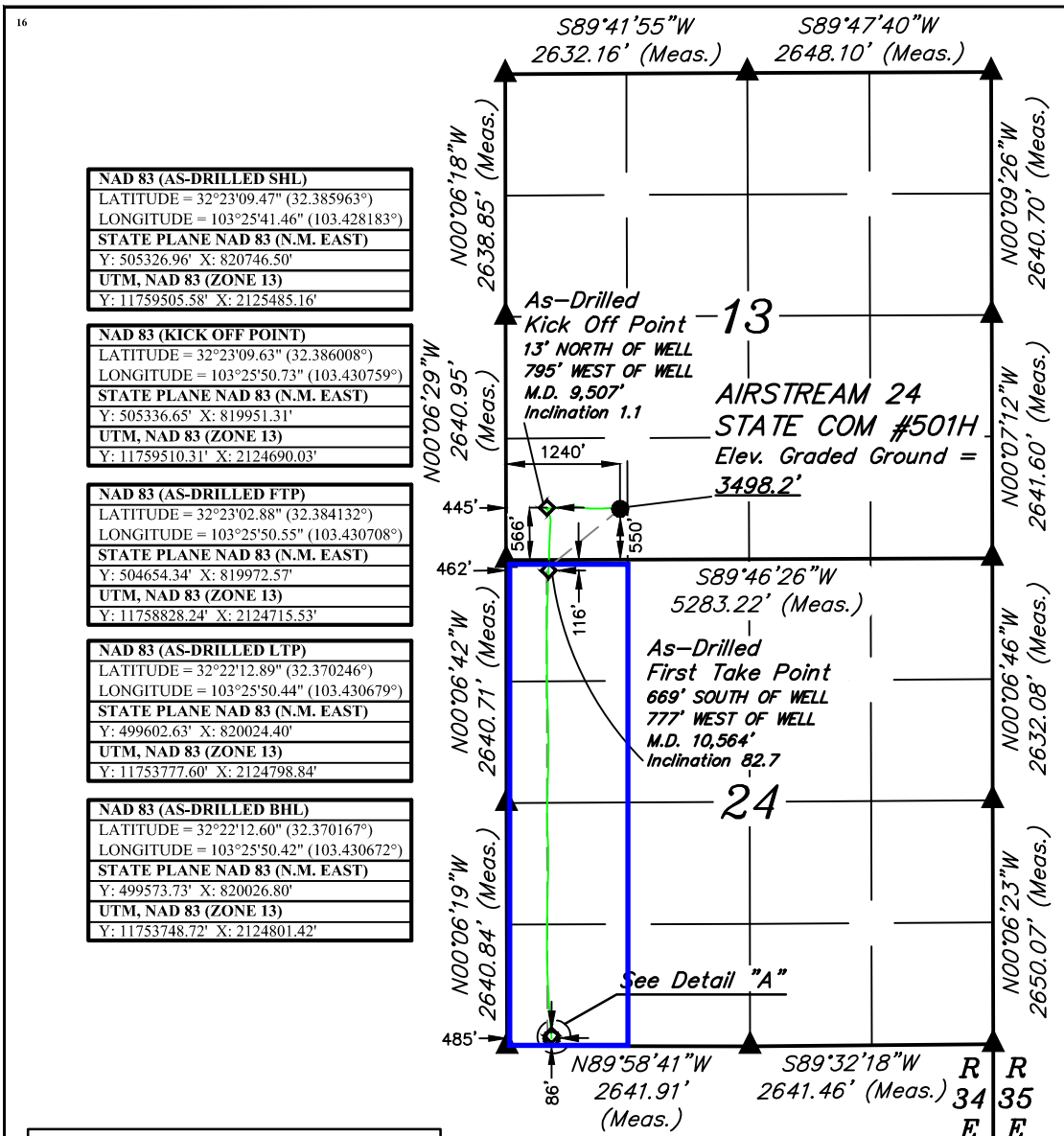
¹⁰ Surface Location

UL or lot no.	Section	Township	Range	Lot Idn	Feet from the	North/South line	Feet from the	East/West line	County
M	13	22S	34E		550	SOUTH	1240	WEST	LEA

¹¹ Bottom Hole Location If Different From Surface

UL or lot no.	Section	Township	Range	Lot Idn	Feet from the	North/South line	Feet from the	East/West line	County
M	24	22S	34E		86	SOUTH	485	WEST	LEA
¹² Dedicated Acres 160		¹³ Joint or Infill		¹⁴ Consolidation Code		¹⁵ Order No.			

No allowable will be assigned to this completion until all interests have been consolidated or a non-standard unit has been approved by the division.



¹⁷ OPERATOR CERTIFICATION
I hereby certify that the information contained herein is true and complete to the best of my knowledge and belief, and that this organization either owns a working interest or unleased mineral interest in the land including the proposed bottom hole location or has a right to drill this well at this location pursuant to a contract with an owner of such a mineral or working interest, or to a voluntary pooling agreement or a compulsory pooling order heretofore entered by the division.

Signature: *KC* Date: **2/14/19**
Kanicia Castillo
Printed Name
kanicia.castillo@cdevinc.com
E-mail Address

¹⁸ SURVEYOR CERTIFICATION
I hereby certify that the well location shown on this plat was plotted from field notes of actual surveys made by me or under my supervision, and that the same is true and correct to the best of my belief.

October 24, 2018
Date of Survey
Signature and Seal of Professional Surveyor:

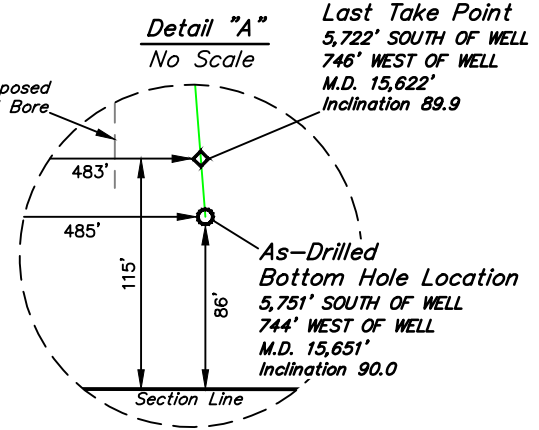
PAUL BUCHELE
NEW MEXICO
23782
PROFESSIONAL SURVEYOR
01-10-19
Certificate Number:

APPROXIMATE WELL BORE DISTANCE FROM FTP TO LTP	
TOTAL	5,055.22'



SCALE
DRAWN BY: 01-10-19 D.J.S.

- NOTE:
- Distances referenced on plat to section lines are perpendicular.
 - Basis of Bearing is a Transverse Mercator Projection with a Central Meridian of W103°53'00"
- = AS-DRILLED SURFACE HOLE LOCATION
◆ = AS-DRILLED KOP/FTP/LTP
○ = AS-DRILLED BOTTOM HOLE LOCATION
▲ = SECTION CORNER LOCATED



District I
1625 N. French Dr., Hobbs, NM 88240
Phone: (575) 393-6161 Fax: (575) 393-0720
District II
811 S. First St., Artesia, NM 88210
Phone: (575) 748-1283 Fax: (575) 748-9720
District III
1000 Rio Brazos Road, Aztec, NM 87410
Phone: (505) 334-6178 Fax: (505) 334-6170
District IV
1220 S. St. Francis Dr., Santa Fe, NM 87505
Phone: (505) 476-3460 Fax: (505) 476-3462

State of New Mexico
Energy, Minerals & Natural Resources Department
OIL CONSERVATION DIVISION
1220 South St. Francis Dr.
Santa Fe, NM 87505

Form C-102
Revised August 1, 2011
Submit one copy to appropriate
District Office

AMENDED REPORT

WELL LOCATION AND ACREAGE DEDICATION PLAT

¹ API Number 30-025-45181		² Pool Code 97293		³ Pool Name Ojo Chiso: Bone Spring, South	
⁴ Property Code 322320		⁵ Property Name AIRSTREAM 24 STATE COM			⁶ Well Number #502H
⁷ OGRID No. 372165		⁸ Operator Name CENTENNIAL RESOURCE PRODUCTION, LLC			⁹ Elevation 3498.2'

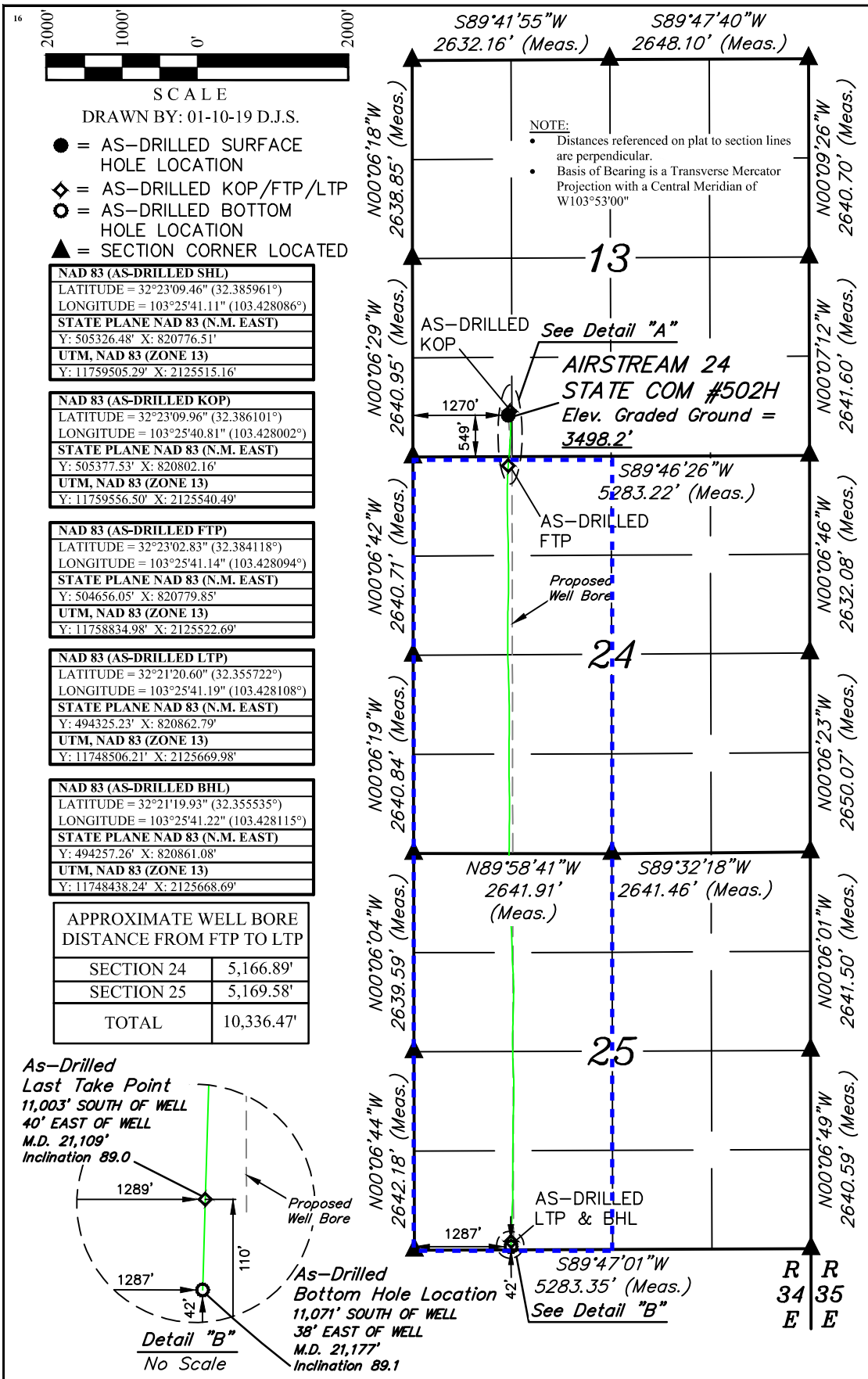
¹⁰ Surface Location

UL or lot no.	Section	Township	Range	Lot Idn	Feet from the	North/South line	Feet from the	East/West line	County
M	13	22S	34E		549	SOUTH	1270	WEST	LEA

¹¹ Bottom Hole Location If Different From Surface

UL or lot no.	Section	Township	Range	Lot Idn	Feet from the	North/South line	Feet from the	East/West line	County
M	25	22S	34E		42	SOUTH	1287	WEST	LEA
¹² Dedicated Acres 640		¹³ Joint or Infill		¹⁴ Consolidation Code		¹⁵ Order No.			

No allowable will be assigned to this completion until all interests have been consolidated or a non-standard unit has been approved by the division.



¹⁷ OPERATOR CERTIFICATION
I hereby certify that the information contained herein is true and complete to the best of my knowledge and belief, and that this organization either owns a working interest or unleased mineral interest in the land including the proposed bottom hole location or has a right to drill this well at this location pursuant to a contract with an owner of such a mineral or working interest, or to a voluntary pooling agreement or a compulsory pooling order heretofore entered by the division.

Signature: *K.C.* Date: **2/20/19**
Kanicia Castillo
Printed Name
Kanicia.castillo@cdevinc.com
E-mail Address

Detail "A" As-Drilled Kick Off Point
No Scale 51' NORTH OF WELL
26' EAST OF WELL
M.D. 9,659'
Inclination 2.4

Detail "B" As-Drilled First Take Point
No Scale 671' SOUTH OF WELL
1' EAST OF WELL
M.D. 10,769'
Inclination 89.0

¹⁸ SURVEYOR CERTIFICATION
I hereby certify that the well location shown on this plat was plotted from field notes of actual surveys made by me or under my supervision, and that the same is true and correct to the best of my belief.

December 14, 2018
Date of Survey
Signature and Seal of Professional Surveyor:
PAUL BUCHELE
NEW MEXICO
23782
PROFESSIONAL SURVEYOR
01-10-19

Certificate Number:



300 N. MARIENFELD STREET, SUITE 1000
MIDLAND, TX 79701

OFFICE 432.695.4222
FAX 432.695.4063

CERTIFIED MAIL
RETURN RECEIPT REQUESTED

Date: April 9, 2025

Re: Application of Permian Resources Operating, LLC to authorize surface commingling at the Airstream 24 CTB located in the in the SWSW quarter of section 13, T22S, R34E, Lea County, New Mexico.

Dear Sir/Madam:

Enclosed please find a copy of the above-referenced application to commingle production by method of metering per well at the Airstream Central Tank Battery located in Lea County, New Mexico, filed this date with the New Mexico Oil Conservation Division. This is a request to add to additional leases to already existing commingle order CTB-880.

API Number	Well Name	UL or Q/Q	STR	Pool Name	Pool Code
3002545155	AIRSTREAM 24 STATE COM 501H	SWSW	M-13-22S-34E	Ojo Chiso; Bone Spring, South	97293
3002545181	AIRSTREAM 24 STATE COM 502H	SWSW	M-13-22S-34E	Ojo Chiso; Bone Spring, South	97293
3002553702	AIRSTREAM 24 STATE COM 301H	SWSW	M-13-22S-34E	Ojo Chiso; Bone Spring, South	97293
3002553703	AIRSTREAM 24 STATE COM 302H	SWSW	M-13-22S-34E	Ojo Chiso; Bone Spring, South	97293
3002553704	AIRSTREAM 24 STATE COM 303H	SWSE	O-13-22S-34E	Ojo Chiso; Bone Spring, South	97293
3002553705	AIRSTREAM 24 STATE COM 304H	SWSE	O-13-22S-34E	Ojo Chiso; Bone Spring, South	97293

Any objection to this application must be filed in writing within twenty (20) days from this date at the Division's Santa Fe Office located at 1220 South St. Francis Drive, Santa Fe, New Mexico, 87505. If no objection is received within this twenty-day period, this application may be approved administratively by the Division.

Pursuant to Statewide Rule 19.15.12.10(C)(4)(g) Permian Resources Operating, LLC requests the option to include additional pools and/or leases within the defined parameters set forth in the order for future additions.

For questions regarding this application, please contact me at (432) 400-0185 or kanicia.schlichting@permianres.com.

Sincerely,

Kanicia Schlichting
Regulatory Specialist

Legal Notice

Permian Resources Operating, LLC is applying to surface commingle six wells to a central tank battery in Lea County, New Mexico. The central tank battery will be located at the Airstream 24 State CTB in the SWSW quarter of section 13, T22S, R34E. The six wells, details and locations are the following:
3002545155, AIRSTREAM 24 STATE COM 501H, SWSW, M-13-22S-34E, Ojo Chiso; Bone Spring, South
3002545181, AIRSTREAM 24 STATE COM 502H, SWSW, M-13-22S-34E, Ojo Chiso; Bone Spring, South
3002553702, AIRSTREAM 24 STATE COM 301H, SWSW, M-13-22S-34E, Ojo Chiso; Bone Spring, South
3002553703, AIRSTREAM 24 STATE COM 302H, SWSW, M-13-22S-34E, Ojo Chiso; Bone Spring, South
3002553704, AIRSTREAM 24 STATE COM 303H, SWSE, O-13-22S-34E, Ojo Chiso; Bone Spring, South
3002553705, AIRSTREAM 24 STATE COM 304H, SWSE, O-13-22S-34E, Ojo Chiso; Bone Spring, South
Interested parties must file objections or requests for hearing with the New Mexico Oil Conservation Division, 1220 South Saint Francis Dr., Santa Fe, NM 87505, within 20 days. Additional information can be obtained by contacting Kanicia Schlichting, Permian Resources Operating, LLC, 300 N. Marienfeld St., Suite 1000, Midland, TX 79701. Phone number is 432-400-0185.

Airstream Notice List

Name	Address	Adress 2	City	State	Zip	Zip 1	Certified Numbers
State of New Mexico	PO Box 1148		Santa Fe	NM	87504	1148	_9407111898765442225733
GMT New Mexico Royalty Company, LLC	4949 S. Niagara Street	Ste 250	Denver	CO	80237		_9407111898765442225955
ConocoPhillips Company	21879 Network Pl		Chicago	IL	60673	1218	_9407111898765442225924
Permian Resources Operating, LLC	300 N Marienfeld Street	Ste 1000	Midland	TX	79701		_9407111898765442225993
Leaco New Mexico Exploration and Production, LLC	PO Box 840133		Dallas	TX	75284	133	_9407111898765442225986

USPS Tracking®

FAQs >

Tracking Number:

Remove X

9407111898765442225733

Copy

Add to Informed Delivery (<https://informedelivery.usps.com/>)

Latest Update

Your item was picked up at a postal facility at 7:57 am on April 14, 2025 in SANTA FE, NM 87501.

Get More Out of USPS Tracking:

USPS Tracking Plus®

Delivered

Delivered, Individual Picked Up at Postal Facility

SANTA FE, NM 87501

April 14, 2025, 7:57 am

[See All Tracking History](#)

Feedback

[What Do USPS Tracking Statuses Mean?](https://faq.usps.com/s/article/Where-is-my-package) (<https://faq.usps.com/s/article/Where-is-my-package>)

Text & Email Updates



USPS Tracking Plus®



Product Information



See Less ^

Tracking Number:

Remove X

9407111898765442225955

Copy

Add to Informed Delivery (<https://informedelivery.usps.com/>)

Latest Update

Your item was delivered to the front desk, reception area, or mail room at 1:32 pm on April 14, 2025 in DENVER, CO 80237.

Get More Out of USPS Tracking:

USPS Tracking Plus®

Delivered

Delivered, Front Desk/Reception/Mail Room

DENVER, CO 80237
April 14, 2025, 1:32 pm

[See All Tracking History](#)

[What Do USPS Tracking Statuses Mean?](https://faq.usps.com/s/article/Where-is-my-package) (https://faq.usps.com/s/article/Where-is-my-package)

[See More](#) ∨

Tracking Number:

[Remove](#) ✕

9407111898765442225924

[Copy](#)

[Add to Informed Delivery](https://informedelivery.usps.com/) (https://informedelivery.usps.com/)

Latest Update

Unfortunately, there are multiple items with that information. To clarify, please provide a few more details.

Enter and submit the send date.

Send Date (MM/DD/YYYY)

Submit

[What Do USPS Tracking Statuses Mean?](https://faq.usps.com/s/article/Where-is-my-package) (https://faq.usps.com/s/article/Where-is-my-package)

Tracking Number:

[Remove](#) ✕

9407111898765442225993

Copy **Add to Informed Delivery** (<https://informedelivery.usps.com/>)

Latest Update

Your item was delivered to an individual at the address at 1:19 pm on April 11, 2025 in MIDLAND, TX 79701.

Get More Out of USPS Tracking:

USPS Tracking Plus[®]

Delivered

Delivered, Left with Individual

MIDLAND, TX 79701
April 11, 2025, 1:19 pm

See All Tracking History

What Do USPS Tracking Statuses Mean? (<https://faq.usps.com/s/article/Where-is-my-package>)

See More 

Tracking Number:

Remove 

9407111898765442225986

Copy **Add to Informed Delivery** (<https://informedelivery.usps.com/>)

Latest Update

Your item has been delivered and is available at a PO Box at 8:57 pm on April 12, 2025 in DALLAS, TX 75284.

Get More Out of USPS Tracking:

USPS Tracking Plus[®]

Delivered

Delivered, PO Box

DALLAS, TX 75284
April 12, 2025, 8:57 pm

See All Tracking History

What Do USPS Tracking Statuses Mean? (<https://faq.usps.com/s/article/Where-is-my-package>)

See More 

Track Another Package

Enter tracking or barcode numbers

Need More Help?

Contact USPS Tracking support for further assistance.

FAQs

**STATE OF NEW MEXICO
ENERGY, MINERALS AND NATURAL RESOURCES DEPARTMENT
OIL CONSERVATION DIVISION**

**APPLICATION FOR SURFACE COMMINGLING
SUBMITTED BY PERMIAN RESOURCES OPERATING, ORDER NO. CTB-1220
LLC**

ORDER

The Director of the New Mexico Oil Conservation Division (“OCD”), having considered the application and the recommendation of the OCD Engineering Bureau, issues the following Order.

FINDINGS OF FACT

1. Permian Resources Operating, LLC (“Applicant”) submitted a complete application to surface commingle the oil and gas production from the pools and leases described in Exhibit A (“Application”).
2. Applicant included a complete list of the wells currently dedicated to each pool and lease.
3. Applicant proposed a method to allocate the oil and gas production to the pools, leases, and wells to be commingled.
4. Applicant in the notice for the Application stated that it sought authorization to prospectively include additional pools and leases in accordance with 19.15.12.10(C)(4)(g) NMAC.
5. Applicant stated that it sought authorization to surface commingle and off-lease measure, as applicable, oil and gas production from wells which have not yet been approved to be drilled, but will produce from a pool and lease as described in Exhibit A.
6. Applicant provided notice of the Application to all persons owning an interest in the oil and gas production to be commingled, including the owners of royalty and overriding royalty interests, regardless of whether they have a right or option to take their interests in kind, and those persons either submitted a written waiver or did not file an objection to the Application.
7. Applicant provided notice of the Application to the Bureau of Land Management (“BLM”) or New Mexico State Land Office (“NMSLO”), as applicable.

CONCLUSIONS OF LAW

8. OCD has jurisdiction to issue this Order pursuant to the Oil and Gas Act, NMSA 1978, §§ 70-2-6, 70-2-11, 70-2-12, 70-2-16, and 70-2-17, 19.15.12. NMAC, and 19.15.23. NMAC.
9. Applicant satisfied the notice requirements for the Application in accordance with 19.15.12.10(A)(2) NMAC, 19.15.12.10(C)(4)(c) NMAC, and 19.15.12.10(C)(4)(e) NMAC, as applicable.

10. Applicant satisfied the notice requirements for the Application in accordance with 19.15.23.9(A)(5) NMAC and 19.15.23.9(A)(6) NMAC, as applicable.
11. Applicant's proposed method of allocation, as modified herein, complies with 19.15.12.10(B)(1) NMAC or 19.15.12.10(C)(1) NMAC, as applicable.
12. Commingling of oil and gas production from state, federal, or tribal leases shall not commence until approved by the BLM or NMSLO, as applicable, in accordance with 19.15.12.10(B)(3) NMAC and 19.15.12.10(C)(4)(h) NMAC.
13. Applicant satisfied the notice requirements for the subsequent addition of pools, leases, and wells in the notice for the Application, in accordance with 19.15.12.10(C)(4)(g) NMAC. Subsequent additions of pools, leases, and wells within Applicant's defined parameters, as modified herein, will not, in reasonable probability, reduce the commingled production's value or otherwise adversely affect the interest owners in the production to be added.
14. By granting the Application with the conditions specified below, this Order prevents waste and protects correlative rights, public health, and the environment.

ORDER

1. Applicant is authorized to surface commingle oil and gas production from the pools and leases as described in Exhibit A.

Applicant is authorized to surface commingle oil and gas production from the wells included in Exhibit A provided that they produce from a pool and lease described in Exhibit A.

Applicant is authorized to store and measure oil and gas production off-lease, as applicable, from the pools and leases as described in Exhibit A at a central tank battery or gas title transfer meter described in Exhibit A.

Applicant is authorized to surface commingle oil and gas production from wells not included in Exhibit A but that produce from a pool and lease as described in Exhibit A.

Applicant is authorized to store and measure oil and gas production off-lease, as applicable, from wells not included in Exhibit A but that produce from a pool and lease as described in Exhibit A at a central tank battery or gas title transfer meter described in Exhibit A.

2. This Order supersedes Order CTB-1220.
3. The allocation of oil and gas production to wells not included in Exhibit A but that produce from a pool and lease as described in Exhibit A shall be determined in the same manner as to wells identified in Exhibit A that produce from that pool and lease, provided that if more than one allocation method is being used or if there are no wells identified in Exhibit A that produce from the pool and lease, then allocation of oil and gas production to each well not included in Exhibit A shall be determined by OCD prior to commingling production from it with the production from another well.

4. The oil and gas production for each well identified in Exhibit A shall be separated and metered prior to commingling it with production from another well.
5. If Applicant recovers oil or gas production from produced water prior to Applicant injecting it or transferring custody of it, then that production shall be allocated to each well in the proportion that it contributed to the total produced water.
6. If Applicant recovers gas production using a vapor recovery unit (VRU), then that gas production shall be allocated to each well in the proportion that it contributed to the total oil production.
7. Applicant shall measure and market the commingled oil at a central tank battery described in Exhibit A in accordance with this Order and 19.15.18.15 NMAC or 19.15.23.8 NMAC.
8. Applicant shall measure and market the commingled gas at a well pad, central delivery point, central tank battery, or gas title transfer meter described in Exhibit A in accordance with this Order and 19.15.19.9 NMAC, provided however that if the gas is vented or flared, and regardless of the reason or authorization pursuant to 19.15.28.8(B) NMAC for such venting or flaring, Applicant shall measure or estimate the gas in accordance with 19.15.28.8(E) NMAC.
9. Applicant shall calibrate the meters used to measure or allocate oil and gas production in accordance with 19.15.12.10(C)(2) NMAC.
10. Applicant shall install and utilize vessels that are appropriately designed to ensure sufficient separation of the fluids and to accurately measure oil and gas production.
11. If the commingling of oil and gas production from any pool, lease, or well reduces the value of the commingled oil and gas production to less than if it had remained segregated, no later than sixty (60) days after the decrease in value has occurred Applicant shall submit a new surface commingling application to OCD to amend this Order to remove the pool, lease, or well whose oil and gas production caused the decrease in value. If Applicant fails to submit a new application, this Order shall terminate on the following day, and if OCD denies the application, this Order shall terminate on the date of such action.
12. Applicant may submit an application to amend this Order to add pools, leases, and subsequently drilled wells with spacing units adjacent to or within the tracts commingled by this Order by submitting a Form C-107-B in accordance with 19.15.12.10(C)(4)(g) NMAC, provided the pools, leases, and subsequently drilled wells are within the identified parameters included in the Application.
13. If a well is not included in Exhibit A but produces from a pool and lease as described in Exhibit A, then Applicant shall submit Forms C-102 and C-103 to the OCD Engineering Bureau after the well has been approved to be drilled and prior to off-lease measuring or commingling oil or gas production from it with the production from another well. The Form

C-103 shall reference this Order and identify the well, proposed method to determine the allocation of oil and gas production to it, and the location(s) that commingling of its production will occur.

14. Applicant shall not commence commingling oil or gas production from state, federal, or tribal leases until approved by the BLM or NMSLO, as applicable.
15. If OCD determines that Applicant has failed to comply with any provision of this Order, OCD may take any action authorized by the Oil and Gas Act or the New Mexico Administrative Code (NMAC).
16. OCD retains jurisdiction of this matter and reserves the right to modify or revoke this Order as it deems necessary.

**STATE OF NEW MEXICO
OIL CONSERVATION DIVISION**



**ALBERT C. S. CHANG
DIRECTOR**

DATE: 4/24/26

State of New Mexico
Energy, Minerals and Natural Resources Department

Exhibit A

Order: CTB-1220

Operator: Permian Resources Operating, LLC (372165)

Central Tank Battery: Airstream 24 Central Tank Battery

Central Tank Battery Location: UL M, Section 13, Township 22 South, Range 34 East

Gas Title Transfer Meter Location: UL M, Section 13, Township 22 South, Range 34 East

Pools

Pool Name	Pool Code
OJO CHISO;BONE SPRING, SOUTH	97293

Leases as defined in 19.15.12.7(C) NMAC

Lease	UL or Q/Q	S-T-R
CA Bone Spring SLO 205112 PUN 1407835	E2W2	24-22S-34E
	E2W2	25-22S-34E
	E2W2	36-22S-34E
CA Bone Spring SLO 205113 PUN 1410506	W2W2	24-22S-34E
	W2W2	25-22S-34E
	W2W2	36-22S-34E
CA Bone Spring SLO 203980 PUN 1378840	E2	24-22S-34E
	E2	25-22S-34E
CA Bone Spring SLO 203791 PUN 1373426	W2	24-22S-34E
	W2	25-22S-34E
CA Bone Spring SLO 203789 PUN 1373419	W2W2	24-22S-34E

Wells

Well API	Well Name	UL or Q/Q	S-T-R	Pool
30-025-45155	AIRSTREAM 24 STATE COM #501H	W2W2	24-22S-34E	97293
30-025-45181	AIRSTREAM 24 STATE COM #502H	W2	24-22S-34E	97293
		W2	25-22S-34E	
30-02553702	AIRSTREAM 24 STATE COM #301H	W2W2	24-22S-34E	97293
		W2W2	25-22S-34E	
		W2W2	36-22S-34E	
30-025-53703	AIRSTREAM 24 STATE COM #302H	E2W2	24-22S-34E	97293
		E2W2	25-22S-34E	
		E2W2	36-22S-34E	
30-025-53704	AIRSTREAM 24 STATE COM #303H	E2	24-22S-34E	97293
		E2	25-22S-34E	
30-025-53705	AIRSTREAM 24 STATE COM #304H	E2	24-22S-34E	97293
		E2	25-22S-34E	

Sante Fe Main Office
Phone: (505) 476-3441

General Information
Phone: (505) 629-6116

Online Phone Directory
<https://www.emnrd.nm.gov/ocd/contact-us>

State of New Mexico
Energy, Minerals and Natural Resources
Oil Conservation Division
1220 S. St Francis Dr.
Santa Fe, NM 87505

CONDITIONS

Action 450326

CONDITIONS

Operator: Earthstone Operating, LLC 300 N. Marienfeld St Ste 1000 Midland, TX 79701	OGRID: 331165
	Action Number: 450326
	Action Type: [C-107] Surface Commingle or Off-Lease (C-107B)

CONDITIONS

Created By	Condition	Condition Date
sarah.clelland	Please review the content of the order to ensure you are familiar with the authorities granted and any conditions of approval. If you have any questions regarding this matter, please email us at OCD.Engineer@emnrd.nm.gov .	4/28/2026