

State of New Mexico  
Energy, Minerals and Natural Resources Department

**Michelle Lujan-Grisham**  
Governor

**Erin Taylor**  
Acting Cabinet Secretary

**Ben Shelton**  
Deputy Secretary

**Albert C.S. Chang**  
Division Director  
Oil Conservation Division



**ADMINISTRATIVE NON-STANDARD SPACING UNIT**

Jacob L. Everhart  
[jeverhart@bwenergy.com](mailto:jeverhart@bwenergy.com)

**Administrative Order NSP – 2395**

**Coterra Energy Operating Company [OGRID 215099]**  
Diamondtail 23 Federal Well No. 401H (30-025-PENDING)  
Diamondtail 23 Federal Well No. 402H (30-025-PENDING)  
**HSU: Section 23, T23S R32E, Lea County, New Mexico**

Reference is made to your application received on April 10<sup>th</sup>, 2026.

You have requested approval of a non-standard horizontal spacing unit to be included in your proposed horizontal spacing unit, as follows:

**Proposed Horizontal Spacing Unit:**

<b>Description</b>	<b>Acres</b>	<b>Pool</b>	<b>Pool code</b>
Section 23	640	Diamondtail; Wolfcamp	17645

You have requested an exception pursuant to Rule 19.15.16.15(A)(3) NMAC, to approve a non-standard horizontal spacing unit consisting of the entire area described above as the horizontal spacing unit. The proposed horizontal spacing unit does not consist of a quarter - quarter section or equivalent in both sections, as required by Rule 19.15.16.15(B)(1) NMAC.

NSP – 2395  
Coterra Energy Operating Company  
Page 2 of 2

---

We understand that you are seeking this exception for an allowance to create a non-standard horizontal spacing unit, comprised of the Proposed Horizontal Spacing Unit referenced above within Lea County, New Mexico.

The Division understands you have given notice of this application to all operators or owners who are "affected persons," as defined in Paragraph (8) Subsection A of 19.15.2.7 NMAC, in all adjoining units which are to be being included.

You have requested this non-standard horizontal spacing unit in order to efficiently locate surface facilities, to reduce surface disturbance and to promote effective well spacing within the Wolfcamp formation underlying all of Section 23 within the referenced Horizontal Spacing Unit. Thus, protecting correlative rights within the pool/formation and adjacent tracts.

Pursuant to the authority conferred by Division Rule 19.15.16.15(B)(5) NMAC, the above-described **non-standard horizontal spacing unit is hereby approved**. Further, the Applicant may add additional wells to the non-standard spacing unit, the well(s) must be in the same horizontal spacing unit and pool/formation. The new well's APD shall reference this NSP order number on Form C-102 with an adjacent letter stating this request.

### **General Provisions**

The above approvals are subject to your being in compliance with all other applicable Division rules, including, but not limited to Division Rule 19.15.5.9 NMAC.

Jurisdiction of this case is retained for the entry of such further orders as the Division may deem necessary.



---

**Albert C.S. Chang**  
Division Director  
AC/lrl

Date: 06/05/2026

ID NO. 574071

NSP - 2395

Revised March 23, 2017

RECEIVED: <b>04/10/26</b>	REVIEWER:	TYPE:	APP NO:
---------------------------	-----------	-------	---------

ABOVE THIS TABLE FOR OCD DIVISION USE ONLY

**NEW MEXICO OIL CONSERVATION DIVISION**  
 - Geological & Engineering Bureau -  
 1220 South St. Francis Drive, Santa Fe, NM 87505



**ADMINISTRATIVE APPLICATION CHECKLIST**

THIS CHECKLIST IS MANDATORY FOR ALL ADMINISTRATIVE APPLICATIONS FOR EXCEPTIONS TO DIVISION RULES AND REGULATIONS WHICH REQUIRE PROCESSING AT THE DIVISION LEVEL IN SANTA FE

**Applicant:** Coterra Energy Operating Company **OGRID Number:** 215099  
**Well Name:** Diamondtail 23 Federal 401H & 402H **API:** Various - See C-102s  
**Pool:** Diamondtail; Wolfcamp **Pool Code:** 17645

**SUBMIT ACCURATE AND COMPLETE INFORMATION REQUIRED TO PROCESS THE TYPE OF APPLICATION INDICATED BELOW**

- 1) **TYPE OF APPLICATION:** Check those which apply for [A]
- A. Location – Spacing Unit – Simultaneous Dedication  
 NSL       NSP (PROJECT AREA)       NSP (PRORATION UNIT)       SD
- B. Check one only for [ I ] or [ II ]
- [ I ] Commingling – Storage – Measurement  
 DHC    CTB    PLC    PC    OLS    OLM
- [ II ] Injection – Disposal – Pressure Increase – Enhanced Oil Recovery  
 WFX    PMX    SWD    IPI    EOR    PPR

- 2) **NOTIFICATION REQUIRED TO:** Check those which apply.
- A.  Offset operators or lease holders  
 B.  Royalty, overriding royalty owners, revenue owners  
 C.  Application requires published notice  
 D.  Notification and/or concurrent approval by SLO  
 E.  Notification and/or concurrent approval by BLM  
 F.  Surface owner  
 G.  For all of the above, proof of notification or publication is attached, and/or,  
 H.  No notice required

<b>FOR OCD ONLY</b>
<input type="checkbox"/> Notice Complete
<input type="checkbox"/> Application Content Complete

3) **CERTIFICATION:** I hereby certify that the information submitted with this application for administrative approval is **accurate** and **complete** to the best of my knowledge. I also understand that **no action** will be taken on this application until the required information and notifications are submitted to the Division.

**Note: Statement must be completed by an individual with managerial and/or supervisory capacity.**

Jacob L. Everhart

Print or Type Name

Signature

4/10/2025  
Date

(505) 999 - 0401  
Phone Number

jeverhart@bwnenergy.com  
e-mail Address

**BEATTY & WOZNIAK, P.C.**

ATTORNEYS AT LAW

1675 BROADWAY, SUITE 600  
DENVER, COLORADO 80202  
TELEPHONE 303-407-4499  
FAX 1-800-886-6566  
www.bwenergylaw.com

OFFICE LOCATIONS

COLORADO

NEW MEXICO

WYOMING

MIGUEL A. SUAZO  
ALSO ADMITTED IN TX, CO

JACOB L. EVERHART  
ALSO ADMITTED IN CO, ND, & UT

April 10, 2026

**VIA ONLINE FILING**

Albert Chang  
Division Director  
Oil Conservation Division  
Energy, Minerals and Natural Resource Department  
1220 South Saint Francis Drive  
Santa Fe, New Mexico 87505

ATTN: Leonard Lowe

**RE: Application of Coterra Energy Operating Co., LLC, for Administrative Approval of 640-acre Non-Standard Horizontal Spacing Unit (NSP)**

Diamondtail 23 Federal  
All of Section 23, Township 23 South, Range 32 East, N.M.P.M., Lea County, New Mexico  
Diamondtail; Wolfcamp [Pool Code: 17645]

Dear Mr. Chang,

Coterra Energy Operating Co., (“Coterra”), (OGRID No. 215099), pursuant to Division rules 19.15.16.15.(B)(5) and 19.15.15.11.B. NMAC, seeks administrative approval of a Non-Standard Horizontal Spacing Unit (“NSP”) for its Diamondtail 23 Federal well(s) located in a 640-acre, more or less, spacing unit underlying all Section 23, Township 23 South, Range 32 East, N.M.P.M., Lea County, NM.

**Reason for the Request:** The proposed NSP is unorthodox in size and acreage under both 19.15.15.11.B.(1) and 19.15.16.15(B)(1) NMAC. The NSP well(s) dedicate 640-acres, which is more than the 40-acre (quarter-quarter) spacing unit building blocks provided under 19.15.16.15.B(1). Additionally, the NSP will be developed by multiple “U-Turn” wells.

Notice is provided under 19.15.16.15.B.(5)(b)(ii) NMAC to affected persons in all tracts that *adjoin the non-standard horizontal spacing unit.*

The proposed 640-acre Non-Standard Spacing Unit will be developed by the following well(s):

- **Diamondtail 23 Federal 401H** (API No. 30-025-*Pending*)
  - Well Type: Infill (U-Turn)
  - Pool Name: Diamondtail; Wolfcamp
  - Pool Code: [17645]
  
- **Diamondtail 23 Federal 402H** (API No. 30-025-*Pending*)
  - Well Type: Infill (U-Turn)
  - Pool Name: Diamondtail; Wolfcamp
  - Pool Code: [17645]

The Division has placed the well(s) listed above in the Diamondtail; Wolfcamp Pool [No. 17645] which provides for 40-acre spacing, comprised of one or more contiguous tracts that the horizontal oil well's completed interval penetrates, each of which consists of a governmental quarter-quarter section or equivalent. 19.15.16.15.B.(1)(a) NMAC.

The acreage included in the Non-Standard Spacing Unit will be subject to the following leases:

- NMNM 127894

In addition to the reasons stated above, Coterra seeks administrative approval of a Non-Standard Spacing Unit to develop the acreage as a single development area and to maximize the productive lateral. Doing so allows Coterra to efficiently locate surface facilities, such as well pad locations and centralized tank batteries, reduce disturbance impacts, reduce emissions and leak points, consolidate roadways, reduce traffic, consolidate pipeline(s), and promotes effective well spacing, thereby ensuring the promotion of conservation, the prevention of waste, and the protection of correlative rights. Division rules 19.15.16.7.P and 19.15.16.15.B(8) NMAC encourage oil and gas development, where possible, in enlarged areas of common ownership to minimize surface disturbance and to promote efficient well spacing. Further, Division rule 19.15.16.15.(B)(5) NMAC authorizes administrative approval of such a request.

Please find the below listed Exhibits included in this application:

**Exhibit 1** is a statement from Coterra Landman – Permian Production, Annaliese Stump.

**Exhibit 2** is a copy of the Well Location and Acreage Dedication Plat (C-102) for each well within the proposed Non-Standard Spacing Unit and includes the SHL, FTP, LTP, and BHL for each well.

**Exhibit 3** includes: (1) a lease map showing the proposed Non-Standard Horizontal Spacing Unit, (2) the adjoining tracts identifying the notification area, and (3) a map showing the U-Turn wells in addition to the existing wells within the NSP.

**Exhibit 4** is a list of affected persons under 19.15.16.15.B(5)(b)(ii) who were sent a copy

of this application, proof of publication, and attachments by certified mail advising that any objections must be filed in writing with the Division within 20 days from the date the Division receives the application.

Thank you for your time and attention to this matter. Please let me know if you require additional information.

Very truly yours,

BEATTY & WOZNIAK, P.C.



Miguel Suazo

[msuazo@bwenergylaw.com](mailto:msuazo@bwenergylaw.com)

James Parrot

[jparrot@bwenergylaw.com](mailto:jparrot@bwenergylaw.com)

Jacob L. Everhart

[jeverhart@bwenergylaw.com](mailto:jeverhart@bwenergylaw.com)

*Attorney(s) for Coterra Energy Operating Co.*

# Exhibit 1



April 8, 2026

### LANDMAN STATEMENT

I have reviewed the ownership of the oil and gas leasehold in the proposed 640-acre more or less, Non-Standard Horizontal Spacing Unit ("NSHSU") underlying all of Section 23, Township 23 South, Range 32 East, N.M.P.M., Lea County, NM, for purposes of the administrative approval for Coterra's **Diamondtail Federal 23 Unit** well(s). As of the date of this letter, the affected parties are:

### SEE ATTACHED EXHIBIT 4

Pursuant to 19.15.16.15.B.(9)(a) NMAC, Coterra certifies that all working interest owners in the existing well(s) and unit(s) have approved and consented to being re-dedicated to the new 640-acre NSHSU, once approved.

Coterra is seeking approval of the NSHSU to eliminate the need for separate production facilities and additional administrative approvals. Approval of the NSHSU will allow for efficient surface facility placement, reduced surface disturbance, and the consolidation of roads, storage tanks, and pipelines. These measures support effective well spacing, conservation of the resource, enhanced recoveries, improved economics and royalties, and waste prevention, while also helping to minimize environmental impacts such as emissions and spills from multiple tank batteries and associated facilities. The Oil Conservation Division's rules encourage such developments to maximize efficiency and reduce surface disturbance in areas of common ownership.

Sincerely,

Coterra Energy Operating Co.,

A handwritten signature in blue ink that reads "Annaliese Stump".

Annaliese Stump, RL

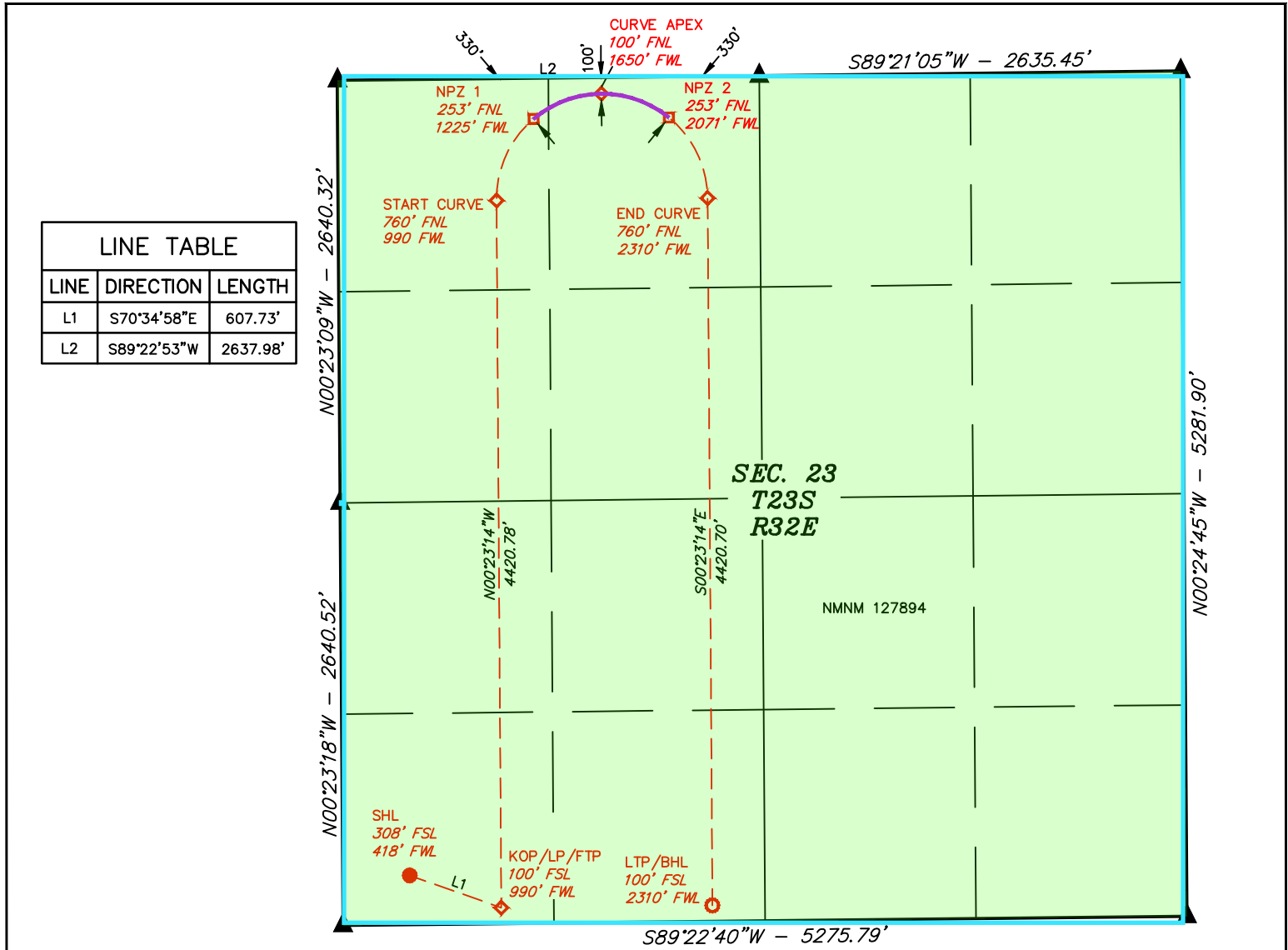
Landman -- Permian Basin

[Annaliese.Stump@coterra.com](mailto:Annaliese.Stump@coterra.com)

# Exhibit 2



Property Name DIAMONDTAIL 23 FEDERAL	Well Number 401H	Drawn By C.D. 03-13-26	Revised By REV. 1 D.M.C. 03-23-26 (WELL NAME CHANGE)
---	---------------------	---------------------------	---



LINE TABLE		
LINE	DIRECTION	LENGTH
L1	S70°34'58"E	607.73'
L2	S89°22'53"W	2637.98'



SCALE

**NOTE:**

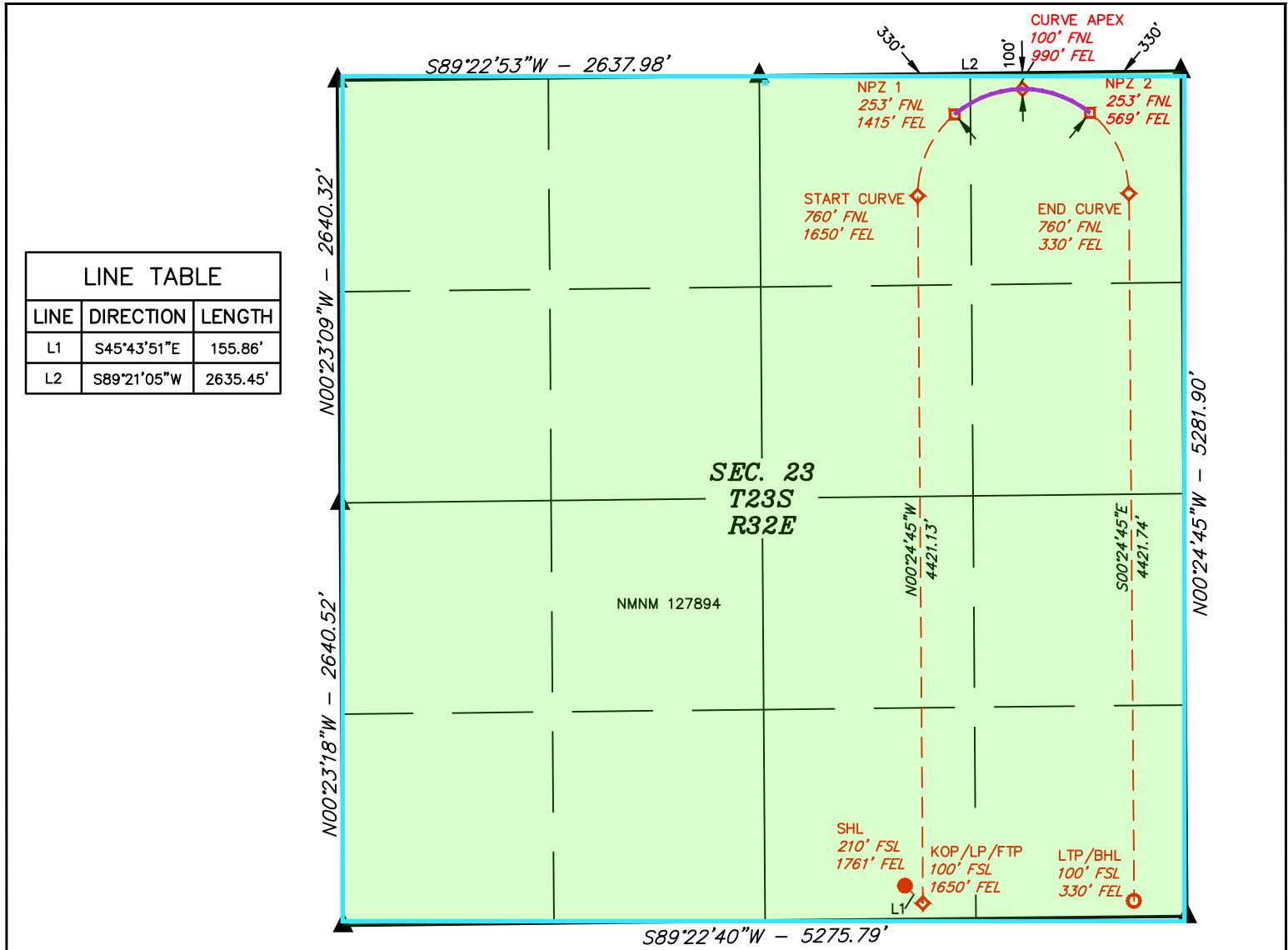
- Distances referenced on plat to section lines are perpendicular.
- Bearings, Distances, Coordinates and acreage are based on the New Mexico coordinate grid system of 1983, East Zone, in U.S. Feet.
- Colored areas within section lines represent Federal oil & gas leases.

- = SURFACE HOLE LOCATION
- ◆ = KICK OFF POINT/LANDING POINT/FIRST TAKE POINT/CURVE APEX
- = NPZ POINT
- = LAST TAKE POINT/ BOTTOM HOLE LOCATION
- ▲ = SECTION CORNER LOCATED
- = NON-PERFORATION ZONE

<b>NAD 83 (SURFACE HOLE LOCATION)</b> LATITUDE = 32°17'01.50" (32.283751°) LONGITUDE = -103°39'09.37" (-103.652604°)	<b>NAD 83 (KOP/LP/FTP)</b> LATITUDE = 32°16'59.47" (32.283186°) LONGITUDE = -103°39'02.71" (-103.650753°)	<b>NAD 83 (START CURVE)</b> LATITUDE = 32°17'43.21" (32.295337°) LONGITUDE = -103°39'02.73" (-103.650759°)	<b>NAD 83 (NPZ 1)</b> LATITUDE = 32°17'48.24" (32.296733°) LONGITUDE = -103°38'60.00" (-103.649999°)
<b>NAD 27 (SURFACE HOLE LOCATION)</b> LATITUDE = 32°17'01.06" (32.283628°) LONGITUDE = -103°39'07.64" (-103.652121°)	<b>NAD 27 (KOP/LP/FTP)</b> LATITUDE = 32°16'59.02" (32.283062°) LONGITUDE = -103°39'00.97" (-103.650270°)	<b>NAD 27 (START CURVE)</b> LATITUDE = 32°17'42.77" (32.295214°) LONGITUDE = -103°39'00.99" (-103.650276°)	<b>NAD 27 (NPZ 1)</b> LATITUDE = 32°17'47.79" (32.296609°) LONGITUDE = -103°38'58.26" (-103.649516°)
<b>STATE PLANE NAD 83 (N.M. EAST)</b> N: 467628.87' E: 751705.25'	<b>STATE PLANE NAD 83 (N.M. EAST)</b> N: 467426.83' E: 752278.42'	<b>STATE PLANE NAD 83 (N.M. EAST)</b> N: 471847.51' E: 752248.54'	<b>STATE PLANE NAD 83 (N.M. EAST)</b> N: 472356.71' E: 752480.11'
<b>STATE PLANE NAD 27 (N.M. EAST)</b> N: 467569.44' E: 710521.79'	<b>STATE PLANE NAD 27 (N.M. EAST)</b> N: 467367.41' E: 711094.95'	<b>STATE PLANE NAD 27 (N.M. EAST)</b> N: 471787.97' E: 711065.18'	<b>STATE PLANE NAD 27 (N.M. EAST)</b> N: 472297.15' E: 711296.76'
<b>NAD 83 (CURVE APEX)</b> LATITUDE = 32°17'49.77" (32.297159°) LONGITUDE = -103°38'55.05" (-103.648624°)	<b>NAD 83 (NPZ 2)</b> LATITUDE = 32°17'48.27" (32.296743°) LONGITUDE = -103°38'50.14" (-103.647262°)	<b>NAD 83 (END CURVE)</b> LATITUDE = 32°17'43.27" (32.295353°) LONGITUDE = -103°38'47.35" (-103.646487°)	<b>NAD 83 (LTP/BHL)</b> LATITUDE = 32°16'59.53" (32.283202°) LONGITUDE = -103°38'47.34" (-103.646482°)
<b>NAD 27 (CURVE APEX)</b> LATITUDE = 32°17'49.33" (32.297036°) LONGITUDE = -103°38'53.31" (-103.648141°)	<b>NAD 27 (NPZ 2)</b> LATITUDE = 32°17'47.83" (32.296620°) LONGITUDE = -103°38'48.40" (-103.646778°)	<b>NAD 27 (END CURVE)</b> LATITUDE = 32°17'42.83" (32.295230°) LONGITUDE = -103°38'45.61" (-103.646004°)	<b>NAD 27 (LTP/BHL)</b> LATITUDE = 32°16'59.08" (32.283078°) LONGITUDE = -103°38'45.60" (-103.645999°)
<b>STATE PLANE NAD 83 (N.M. EAST)</b> N: 472514.63' E: 752904.06'	<b>STATE PLANE NAD 83 (N.M. EAST)</b> N: 472365.84' E: 753325.96'	<b>STATE PLANE NAD 83 (N.M. EAST)</b> N: 471861.76' E: 753568.47'	<b>STATE PLANE NAD 83 (N.M. EAST)</b> N: 467441.16' E: 753598.35'
<b>STATE PLANE NAD 27 (N.M. EAST)</b> N: 472455.06' E: 711720.72'	<b>STATE PLANE NAD 27 (N.M. EAST)</b> N: 472306.28' E: 712142.62'	<b>STATE PLANE NAD 27 (N.M. EAST)</b> N: 471802.22' E: 712385.11'	<b>STATE PLANE NAD 27 (N.M. EAST)</b> N: 467381.74' E: 712414.88'



Property Name DIAMONDTAIL 23 FEDERAL	Well Number 402H	Drawn By C.D. 03-11-26	Revised By REV. 1 D.M.C. 03-23-26 (WELL NAME CHANGE)
---	---------------------	---------------------------	---



SCALE

**NOTE:**

- Distances referenced on plat to section lines are perpendicular.
- Bearings, Distances, Coordinates and acreage are based on the New Mexico coordinate grid system of 1983, East Zone, in U.S. Feet.
- Colored areas within section lines represent Federal oil & gas leases.


- = SURFACE HOLE LOCATION
- ◆ = KICK OFF POINT/LANDING POINT/FIRST TAKE POINT/CURVE APEX
- = NPZ POINT
- = LAST TAKE POINT/ BOTTOM HOLE LOCATION
- ▲ = SECTION CORNER LOCATED
- = NON-PERFORATION ZONE

<b>NAD 83 (SURFACE HOLE LOCATION)</b> LATITUDE = 32°17'00.67" (32.283519°) LONGITUDE = -103°38'33.30" (-103.642584°)	<b>NAD 83 (KOP/LP/FTP)</b> LATITUDE = 32°16'59.58" (32.283218°) LONGITUDE = -103°38'32.01" (-103.642225°)	<b>NAD 83 (START CURVE)</b> LATITUDE = 32°17'43.33" (32.295370°) LONGITUDE = -103°38'32.05" (-103.642236°)	<b>NAD 83 (NPZ 1)</b> LATITUDE = 32°17'48.36" (32.296766°) LONGITUDE = -103°38'29.32" (-103.641476°)
<b>NAD 27 (SURFACE HOLE LOCATION)</b> LATITUDE = 32°17'00.22" (32.283395°) LONGITUDE = -103°38'31.56" (-103.642101°)	<b>NAD 27 (KOP/LP/FTP)</b> LATITUDE = 32°16'59.14" (32.283094°) LONGITUDE = -103°38'30.27" (-103.641742°)	<b>NAD 27 (START CURVE)</b> LATITUDE = 32°17'42.89" (32.295247°) LONGITUDE = -103°38'30.31" (-103.641753°)	<b>NAD 27 (NPZ 1)</b> LATITUDE = 32°17'47.91" (32.296643°) LONGITUDE = -103°38'27.58" (-103.640993°)
<b>STATE PLANE NAD 83 (N.M. EAST)</b> N: 467564.24' E: 754802.38'	<b>STATE PLANE NAD 83 (N.M. EAST)</b> N: 467455.45' E: 754913.99'	<b>STATE PLANE NAD 83 (N.M. EAST)</b> N: 471876.46' E: 754882.15'	<b>STATE PLANE NAD 83 (N.M. EAST)</b> N: 472385.78' E: 755113.45'
<b>STATE PLANE NAD 27 (N.M. EAST)</b> N: 467504.82' E: 713618.91'	<b>STATE PLANE NAD 27 (N.M. EAST)</b> N: 467396.03' E: 713730.51'	<b>STATE PLANE NAD 27 (N.M. EAST)</b> N: 471816.92' E: 713698.79'	<b>STATE PLANE NAD 27 (N.M. EAST)</b> N: 472326.22' E: 713930.10'
<b>NAD 83 (CURVE APEX)</b> LATITUDE = 32°17'49.90" (32.297193°) LONGITUDE = -103°38'24.36" (-103.640101°)	<b>NAD 83 (NPZ 2)</b> LATITUDE = 32°17'48.40" (32.296778°) LONGITUDE = -103°38'19.46" (-103.638739°)	<b>NAD 83 (END CURVE)</b> LATITUDE = 32°17'43.40" (32.295388°) LONGITUDE = -103°38'16.67" (-103.637964°)	<b>NAD 83 (LTP/BHL)</b> LATITUDE = 32°16'59.64" (32.283234°) LONGITUDE = -103°38'16.63" (-103.637954°)
<b>NAD 27 (CURVE APEX)</b> LATITUDE = 32°17'49.45" (32.297070°) LONGITUDE = -103°38'22.63" (-103.639618°)	<b>NAD 27 (NPZ 2)</b> LATITUDE = 32°17'47.95" (32.296654°) LONGITUDE = -103°38'17.72" (-103.638256°)	<b>NAD 27 (END CURVE)</b> LATITUDE = 32°17'42.95" (32.295265°) LONGITUDE = -103°38'14.93" (-103.637481°)	<b>NAD 27 (LTP/BHL)</b> LATITUDE = 32°16'59.20" (32.283110°) LONGITUDE = -103°38'14.90" (-103.637471°)
<b>STATE PLANE NAD 83 (N.M. EAST)</b> N: 472543.92' E: 755537.36'	<b>STATE PLANE NAD 83 (N.M. EAST)</b> N: 472395.36' E: 755959.31'	<b>STATE PLANE NAD 83 (N.M. EAST)</b> N: 471891.40' E: 756202.08'	<b>STATE PLANE NAD 83 (N.M. EAST)</b> N: 467469.78' E: 756233.92'
<b>STATE PLANE NAD 27 (N.M. EAST)</b> N: 472484.36' E: 714354.01'	<b>STATE PLANE NAD 27 (N.M. EAST)</b> N: 472335.80' E: 714775.95'	<b>STATE PLANE NAD 27 (N.M. EAST)</b> N: 471831.86' E: 715018.71'	<b>STATE PLANE NAD 27 (N.M. EAST)</b> N: 467410.36' E: 715050.44'

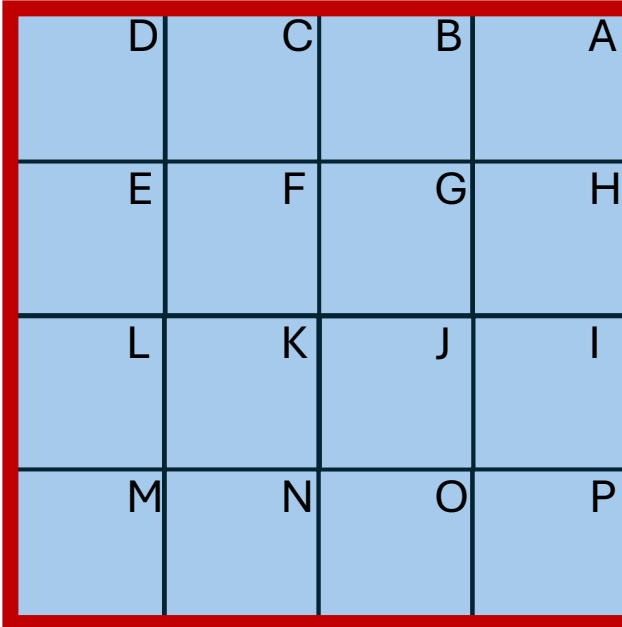
# Exhibit 3

# DIAMONDTAIL 23

T23S/R32E, LEA CO., NM

 Tract 1:  
NMNM127894  
Federal  
640.00 Acres

SECTION 23

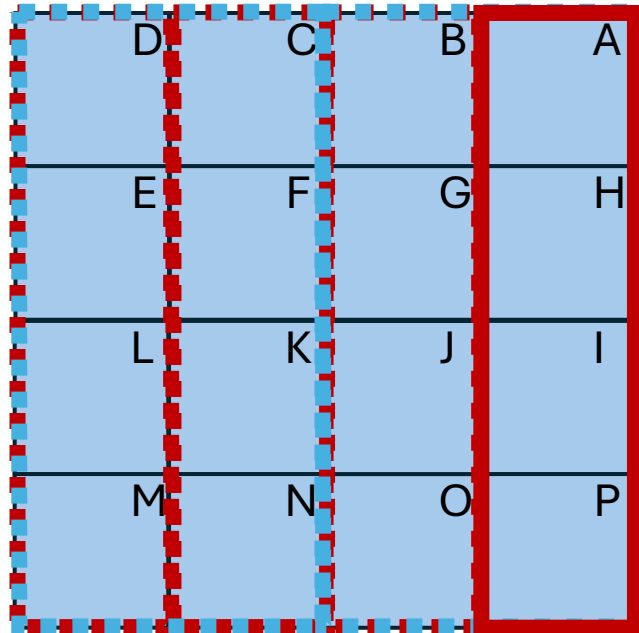


D	C	B	A
E	F	G	H
L	K	J	I
M	N	O	P

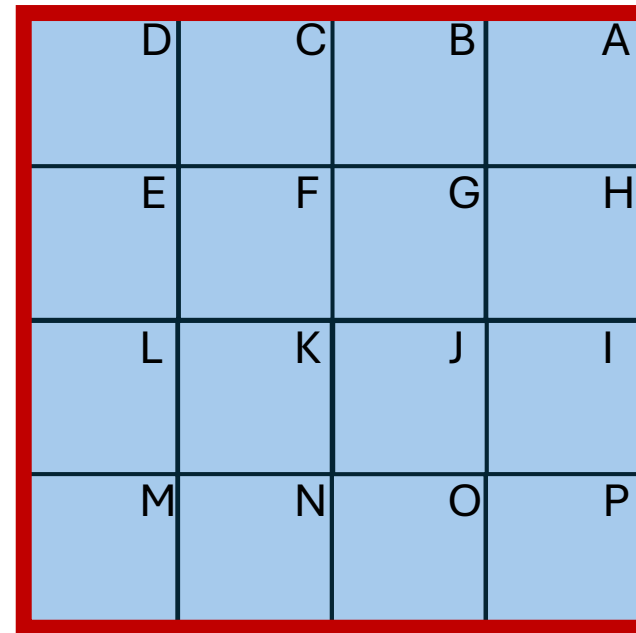
# DIAMONDTAIL 23


T23S/R32E, LEA CO., NM  
SECTION 23

STANDARD



NON-STANDARD



 Tract 1:  
NMNM127894  
Federal  
640.00 Acres

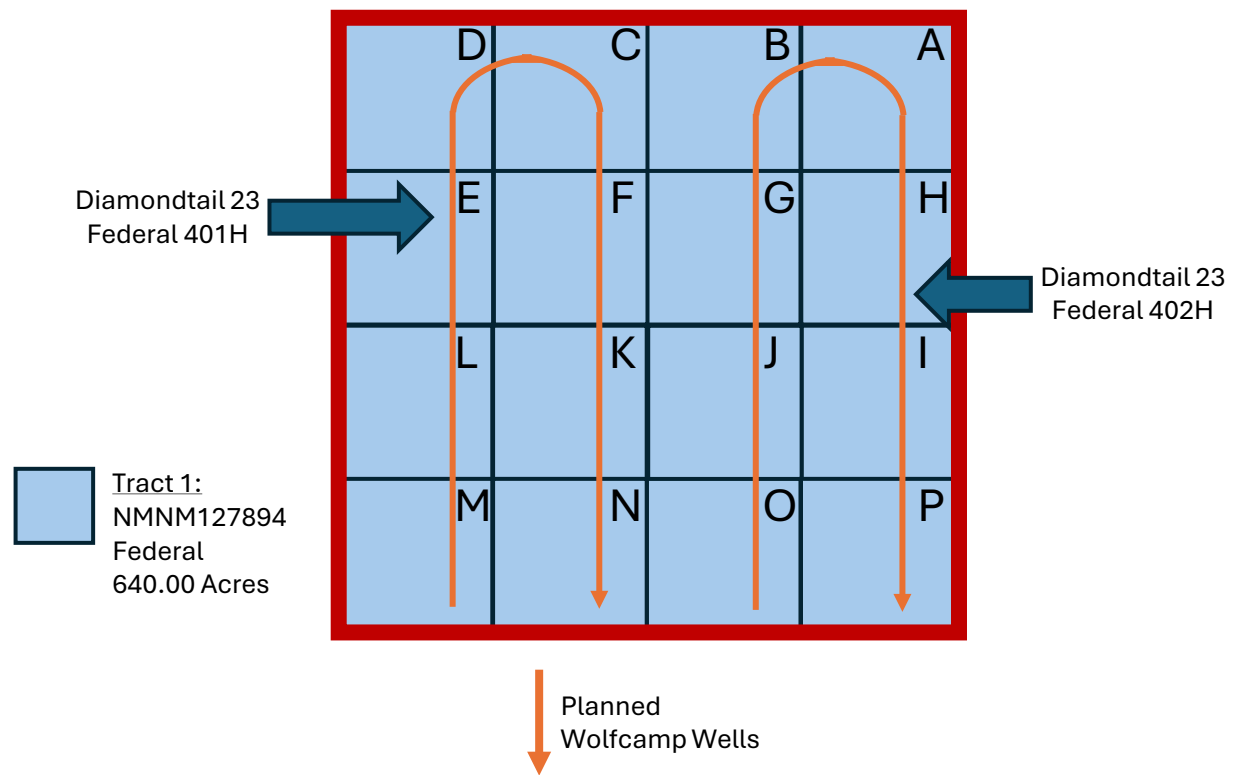
# DIAMONDTAIL 23

T23S/R32E, LEA CO., NM  
SECTION 23

Pool Code [17645]

Diamondtail 23 Federal 401H | API Number Pending

Diamondtail 23 Federal 402H | API Number Pending



### T23S/R32E, LEA CO., NM

SECTION 15				SECTION 14				SECTION 13				
D	C	B	A	D	C NMNM 084729	B	A	D	C NMNM 077062	B	A NMNM 140718	
E	F	G	H NMNM 084728	E	F	G	H	E	F	G	H	
L	K NMNM 095642	J	I	L	K	J	I	L	K	J NMNM 0536344	I	
M	N	O	P	M	N	O	P	M	N	O	P	
SECTION 22	D	C	B NMNM 088163	A	D	C	B	A	D	C NMNM 136216	B	A
	E	F	G	H	<b>DIAMONDTAIL 23</b>				E	F	G	H
	L	K NMNM 086153	J	I	L	K NMNM 127894	J	I	L	K	J	I
	M	N	O	P	M	N	O	P	M	N	O NMNM 063228	P
D	C	B	A	D	C	B	A	D	C NMNM 086154	B	A	
E	F	G NMNM 063228	H	E	F	G	H	E	F	G	H	
L	K	J	I	L	K	J NMNM 088164	I	L	K	J	I	
M	N	O	P	M	N	O	P	M	N	O	P	
SECTION 27				SECTION 26				SECTION 25				

# Exhibit 4

Offsetting Section:	Operator:	Working Interest Owner(s) -- N/A if Coterra/Cimarex is NOT Operator	Addresses:	Notice Sent:
Section 13 Operators:	Devon Energy Production Company LP (6137)	N/A	Devon Energy Production Company LP 333 W Sheridan Ave Oklahoma City, OK 73102-8260	9589 0710 5270 2981 1397 45
Section 14 Operators:	Strata Production Co. (21712)	N/A	Strata Production Company PO Box 1030 Roswell, NM 88202-1030	9589 0710 5270 2981 1397 52
	Marathon Oil Permian LLC (372098)	N/A	Marathon Oil Permian LLC 990 Town And Country Blvd Houston, TX 77024	9589 0710 5270 2981 1395 47
	COG Operating LLC (229137)	N/A	COG Operating LLC 600 W. Illinois Ave. Midland, TX 79701	9589 0710 5270 2981 1397 69
	Coterra Energy Operating Co. (215099)	Long LLC (0.57%) Strata Production Co. (1.33%) Coterra Energy Operating Co. (98.10%)	Coterra Energy Operating Co. 6001 Deauville Blvd., Suite 300N Midland, TX 79706	9589 0710 5270 2981 1397 76
Section 15 Operators:	Devon Energy Production Company LP (6137)	N/A	Devon Energy Production Company LP 333 W Sheridan Ave Oklahoma City, OK 73102-8260	9589 0710 5270 2981 1397 45
	Marathon Oil Permian LLC (372098)	N/A	Marathon Oil Permian LLC 990 Town And Country Blvd Houston, TX 77024	9589 0710 5270 2981 1395 47
Section 22 Operator:	COG Operating LLC (229137)	N/A	COG Operating LLC 600 W. Illinois Ave. Midland, TX 79701	9589 0710 5270 2981 1397 69
Section 24 Operator:	Harvard Petroleum Company LLC (10155)	N/A	Harvard Petroleum Company LLC PO Box 936 Roswell, NM 88202	9589 0710 5270 2981 1392 88
	Devon Energy Production Company LP (6137)	N/A	Devon Energy Production Company LP 333 W Sheridan Ave Oklahoma City, OK 73102-8260	9589 0710 5270 2981 1397 45
Section 25 Operator:	Coterra Energy Operating Co. (215099)	Coterra Energy Operating Co. (100%)	Coterra Energy Operating Co. 6001 Deauville Blvd., Suite 300N Midland, TX 79706	N/A
Section 26 Operators:	COG Operating LLC (229137)	N/A	COG Operating LLC 600 W. Illinois Ave. Midland, TX 79701	9589 0710 5270 2981 1397 69
	Chevron U.S.A. Inc. (4323)	N/A	Chevron U.S.A. Inc. 1400 Smith St. Houston, TX 77002	9589 0710 5270 2981 1392 95
Section 27 Operator:	COG Operating LLC (229137)	N/A	COG Operating LLC 600 W. Illinois Ave. Midland, TX 79701	9589 0710 5270 2981 1397 69

Offsetting Mineral Ownership:	Address:	Notice Sent:
Federal (All above sections)	Bureau of Land Management 301 Dinosaur Trail Santa Fe, NM 87508	9589 0710 5270 2981 1393 01

**BEATTY & WOZNIAK, P.C.**

ATTORNEYS AT LAW  
1675 BROADWAY, SUITE 600  
DENVER, COLORADO 80202  
TELEPHONE 303-407-4499  
FAX 1-800-886-6566  
www.bwenergylaw.com

OFFICE LOCATIONS

COLORADO  
NEW MEXICO  
WYOMING

MIGUEL A. SUAZO  
ALSO ADMITTED IN TX, CO

JACOB L. EVERHART  
ALSO ADMITTED IN CO, ND, & UT

April 10, 2026

**VIA CERTIFIED MAIL**  
**RETURN RECEIPT REQUESTED**

TO: ALL AFFECTED PERSONS

**RE: Application of Coterra Energy Energy Operating Co. (“Coterra”), for  
Administrative Approval of 640-acre Non-Standard Horizontal Spacing Unit (NSP)  
in the Diamondtail; Wolfcamp [Pool Code: 17645] for the Diamondtail Federal 23  
Unit located in Section 23, Township 23 South, Range 32 East, N.M.P.M., Lea  
County, New Mexico**

To Whom It May Concern,

Enclosed is a copy of the above-referenced application filed with the New Mexico Oil Conservation Division (the “Division”) on this date. Any objections that you have to these applications must be filed in writing with the New Mexico Oil Conservation Division, 1220 South St. Francis Drive, Santa Fe, New Mexico, 87505, within twenty (20) days from the date the Division receives the above-referenced applications. If no objection is received within the twenty-day period, the application may be approved administratively by the Division.

This Application would have been filed with, and received by, the Division either on the date of this letter as referenced above, or no later than two (2) days after the date referenced above. Email correspondence for this matter can be sent to the Division at [OCD.Engineer@emrld.nm.gov](mailto:OCD.Engineer@emrld.nm.gov). If you have any questions about this application, please contact the following:

Annaliese Stumpe, RL, Landman – Permian Production  
Coterra  
(432) 571 – 7702  
[Annaliese.stump@coterra.com](mailto:Annaliese.stump@coterra.com)

Very truly yours,  
BEATTY & WOZNIAK, P.C.



Miguel A. Suazo  
[msuazo@bwenergylaw.com](mailto:msuazo@bwenergylaw.com)

Jacob L. Everhart  
[jeverhart@bwenergylaw.com](mailto:jeverhart@bwenergylaw.com)

*Attorney(s) for Coterra Energy Operating  
Co.,*

Sante Fe Main Office  
Phone: (505) 476-3441

General Information  
Phone: (505) 629-6116

Online Phone Directory  
<https://www.emnrd.nm.gov/ocd/contact-us>

**State of New Mexico  
Energy, Minerals and Natural Resources  
Oil Conservation Division  
1220 S. St Francis Dr.  
Santa Fe, NM 87505**

COMMENTS

Action 574071

**COMMENTS**

Operator: Coterra Energy Operating Co. 6001 Deauville Blvd Midland, TX 79706	OGRID: 215099
	Action Number: 574071
	Action Type: [UF-NSP] Non-Standard Proration (NSP)

**COMMENTS**

Created By	Comment	Comment Date
llowe	This NSP order was approved with pending API wells. The owner of the NSP shall update the OCD when API number(s) are assigned to those pending APD well(s) by sending an e-mail to <a href="mailto:ocd.engineer@emnrd.nm.gov">ocd.engineer@emnrd.nm.gov</a> . TITLED: Updating NSP-XXX with API number(s) and associated Well Name.	6/8/2026
llowe	If the Operator wants to add existing wells within the same NSP HSU, the operator will need to submit a C-103 X or Z to the OCD online portal. The sundry shall state the following: "Adding Wells to an NSP HSU: Well Name, Well API No., Pool Name, Pool Code, NSP Order Number". Send an email to <a href="mailto:ocd.engineer@emnrd.nm.gov">ocd.engineer@emnrd.nm.gov</a> . TITLED: Adding existing wells to NSP-XXXX, C-103 X or Z. NSP-XXXX.	6/8/2026

Sante Fe Main Office  
Phone: (505) 476-3441

General Information  
Phone: (505) 629-6116

Online Phone Directory  
<https://www.emnrd.nm.gov/ocd/contact-us>

**State of New Mexico**  
**Energy, Minerals and Natural Resources**  
**Oil Conservation Division**  
**1220 S. St Francis Dr.**  
**Santa Fe, NM 87505**

CONDITIONS

Action 574071

**CONDITIONS**

Operator: Coterra Energy Operating Co. 6001 Deauville Blvd Midland, TX 79706	OGRID: 215099
	Action Number: 574071
	Action Type: [UF-NSP] Non-Standard Proration (NSP)

**CONDITIONS**

Created By	Condition	Condition Date
llowe	None	4/27/2026