

State of New Mexico
Energy, Minerals and Natural Resources Department

Michelle Lujan Grisham
Governor

Erin Taylor
Acting Cabinet Secretary

Ben Shelton
Deputy Secretary

Albert C.S. Chang
Division Director
Oil Conservation Division



A. Raylee Starnes
arstarnes@hollandhart.com

ADMINISTRATIVE NON-STANDARD LOCATION

Administrative Order NSL – 9348

**Devon Energy Production Company, L.P. [OGRID 6137]
Fiji 17 5 Federal Com Well No. 834H
API No. 30-015-57733**

Reference is made to your application received on April 24th, 2026.

Proposed Location

	<u>Footages</u>	<u>Unit/Lot</u>	<u>Sec.</u>	<u>Twsp</u>	<u>Range</u>	<u>County</u>
Surface	2480 FNL & 1177 FEL	H	17	23S	31E	Eddy
First Take Point	2540 FNL & 330 FEL	H	17	23S	31E	Eddy
Last Take Point	100 FNL & 330 FEL	A/1	05	23S	31E	Eddy
Terminus	20 FNL & 330 FEL	A/1	05	23S	31E	Eddy

Proposed Horizontal Units

<u>Description</u>	<u>Acres</u>	<u>Pool</u>	<u>Pool Code</u>
NE/4 Section 17	160	Sand Dunes; Wolfcamp, West	97672
E/2 Section 08	639.7	Sand Dunes; Wolfcamp	96991
E/2 Section 05			

The proposed Horizontal Spacing Unit consists of a total of 799.7 acres. The unorthodox location pertains to the heel portion of the perforated zone, within the Sand Dunes; Wolfcamp, West (97672) pool.

You have requested to drill this horizontal well at an unorthodox well location described above in the referenced pool or formation. 19.15.16.15(B)(3)(a) NMAC governs this proposed well and

Administrative Order NSL - 9348
Devon Energy Production Company, L.P.
Page 2 of 2

provides that the operator shall dedicate to each horizontal **gas** well a standard horizontal spacing unit that comprises of one or more contiguous tracts that the horizontal well's completed interval penetrates, each of which consists of a governmental quarter section or equivalent. 19.15.16.15(C)(1)(a) NMAC governs the distance in the horizontal plane from any point in the completed interval to any outer boundary of the horizontal spacing unit, measured along a line perpendicular to the completed interval or to the tangent thereof, shall be a minimum of 660 feet for a **gas** well. 19.15.16.15(C)(1)(b) NMAC governs the first and last take point of a horizontal well shall be no closer than 330 feet for a **gas** in the horizontal plane, to any outer boundary of the horizontal spacing unit.

The request to deviate from an orthodox location has met all requirements of 19.15.16.15 (C)(5)(a) NMAC. It is understood that you are seeking this exception in order to create a non-standard location, comprised of First and Last Take Points referenced above within the described Horizontal Spacing Unit.

This well's completed interval is as close as 100 feet to the southern edge of the horizontal spacing unit. Encroachment will impact the following tracts.

Section 17, encroachment to the SE/4

The Division understands you have given notice of this application to all operators or owners who are "affected persons," as defined in 19.15.2.7(A)(8) NMAC, in all adjoining units towards which the proposed location encroaches.

Division understands you are seeking this unorthodox location in order to minimize reserves left in the ground by increasing the completed lateral to obtain the ultimate recovery of reserves and preventing waste of natural resources of current and future well development within the Wolfcamp formation underlying the NE/4 Section 17, E/2 Section 8 and Section 5.

Your application has been filed under 19.15.16.15(C)(6) NMAC, 19.15.15.13 NMAC and 19.15.4.12 (A)(2) NMAC.

Per 19.15.15.13 (B) NMAC, **Division approves this unorthodox location.**

Reference this NSL order number on the As Drilled C-102 submitted with the Authorization to Transport, to place this well into production.

The above approvals are subject to your following all other applicable Division rules.

Jurisdiction of this case is retained for the entry of further orders as Division deems necessary.



Albert C.S. Chang
Division Director
AC/lrl

Date: 06/18/2026

ID NO. 578982

NSP - 9348

Revised March 23, 2017

RECEIVED: 04/24/26	REVIEWER:	TYPE:	APP NO:
---------------------------	-----------	-------	---------

ABOVE THIS TABLE FOR OCD DIVISION USE ONLY

NEW MEXICO OIL CONSERVATION DIVISION
 - Geological & Engineering Bureau -
 1220 South St. Francis Drive, Santa Fe, NM 87505



ADMINISTRATIVE APPLICATION CHECKLIST

THIS CHECKLIST IS MANDATORY FOR ALL ADMINISTRATIVE APPLICATIONS FOR EXCEPTIONS TO DIVISION RULES AND REGULATIONS WHICH REQUIRE PROCESSING AT THE DIVISION LEVEL IN SANTA FE

Applicant: Devon Energy Production Company, L.P. **OGRID Number:** 6137
Well Name: Fiji 17 5 Fed Com 834H **API:** 30-015-57733
Pool: Sand Dunes; Wolfcamp, West (gas) **Pool Code:** 97672

SUBMIT ACCURATE AND COMPLETE INFORMATION REQUIRED TO PROCESS THE TYPE OF APPLICATION INDICATED BELOW

- 1) **TYPE OF APPLICATION:** Check those which apply for [A]
 A. Location – Spacing Unit – Simultaneous Dedication
 NSL NSP (PROJECT AREA) NSP (PRORATION UNIT) SD
- B. Check one only for [I] or [II]
 [I] Commingling – Storage – Measurement
 DHC CTB PLC PC OLS OLM
 [II] Injection – Disposal – Pressure Increase – Enhanced Oil Recovery
 WFX PMX SWD IPI EOR PPR

FOR OCD ONLY
<input type="checkbox"/> Notice Complete
<input type="checkbox"/> Application Content Complete

- 2) **NOTIFICATION REQUIRED TO:** Check those which apply.
 A. Offset operators or lease holders
 B. Royalty, overriding royalty owners, revenue owners
 C. Application requires published notice
 D. Notification and/or concurrent approval by SLO
 E. Notification and/or concurrent approval by BLM
 F. Surface owner
 G. For all of the above, proof of notification or publication is attached, and/or,
 H. No notice required

3) **CERTIFICATION:** I hereby certify that the information submitted with this application for administrative approval is **accurate** and **complete** to the best of my knowledge. I also understand that **no action** will be taken on this application until the required information and notifications are submitted to the Division.

Note: Statement must be completed by an individual with managerial and/or supervisory capacity.

A. Raylee Starnes

Print or Type Name

Signature

April 24, 2026

Date

505-988-4421

Phone Number

arstarnes@hollandhart.com

e-mail Address



A. Raylee Starnes
Associate
Phone (505) 954-3669
arstarnes@hollandhart.com

April 24, 2026

VIA ONLINE FILING

Albert Chang, Division Director
Oil Conservation Division
Energy, Minerals and Natural Resources Department
1220 South Saint Francis Drive
Santa Fe, New Mexico 87505

**Re: Devon Energy Production Company, L.P.
Request for Administrative Approval of an Unorthodox Well Location**

Fiji 17 5 Fed Com 834H well
Lots 1-2, S/2 NE/4, and NW/4 (E/2 equivalent) of irregular Section 5, E/2 of Section 8,
and NE/4 of Section 17, Township 23 South, Range 31 East, NMPM, Eddy County, New
Mexico
Sand Dunes; Wolfcamp, West (gas) [97672]
API No. 30-015-57733

Dear Mr. Chang:

Devon Energy Production Company, L.P. (“Devon”) (OGRID No. 6137), pursuant to Division Rules 19.15.16.15.C(6) and 19.15.15.13 NMAC and applicable rules governing acreage and well location requirements for the Sand Dunes; Wolfcamp, West (gas) [97672], seeks administrative approval of an unorthodox well location for its Fiji 17 5 Fed Com 834H well (API No. 30-015-57733), in a 799.7-acre, more or less, spacing unit underlying Lots 1-2, S/2 NE/4, and NW/4 (E/2 equivalent) of irregular Section 5, E/2 of Section 8, and NE/4 of Section 17, Township 23 South, Range 31 East, NMPM, Eddy County, New Mexico.

The location for the proposed **Fiji 17 5 Fed Com 834H well** is as follows:

- Surface location: 2,480’ FNL and 1,177 FEL (Unit H) of Section 17
- First take point: 2,540’ FNL and 330’ FEL (Unit H) of Section 17
- Last take point: 100’ FNL and 330’ FEL (Lot 1) of irregular Section 5
- Bottom location: 20’ FNL and 330’ FEL (Lot 1) of irregular Section 5

T 505.954.3669 F 505.983.6043
110 North Guadalupe, Suite 1, Santa Fe, NM 87501-1849
Mail to: P.O. Box 2208, Santa Fe, NM 87504-2208
www.hollandhart.com

Alaska	Montana	Utah
Colorado	Nevada	Washington, D.C.
Idaho	New Mexico	Wyoming

The well traverses two pools, one of which is a gas pool; therefore, the setback requirements for the gas pool applies to the spacing unit. This application is specific to the Sand Dunes; Wolfcamp, west (gas) [97672], which covers Section 17. The other pool involved is the Sand Dunes; Wolfcamp (oil) Pool [96991], which covers Sections 5 and 8.

Since this acreage is governed by the Division’s statewide rules, the proposed first and last take point, as well as the lateral, for this well will be unorthodox because it is closer than the standard offsets to the northern, southern, and eastern boundary of the spacing unit—thus, encroaching on the Department of Energy’s (“DOE”) WIPP facility to the north, OXY USA, Inc.’s (“OXY”) Pure Gold MDP1 spacing unit to the south, and Devon’s Cat Island spacing unit to the east.

Exhibit A is an Engineering Statement explaining why approval of the application is necessary.

Exhibit B is a Form C-102 showing the **Fiji 17 5 Fed Com 834H** well encroaches on the tract to the north in the SE/4 of Section 32, T22S-R31E, OXY’s Pure Gold MDP1 spacing unit to the south, and Devon’s Cat Island spacing unit to the east.

Exhibit C is a plat for Sections 4, 5, 8, 9, 16 and 17, T23S-R31E, and Section 32, T22S-R31E, that shows the proposed Fiji 17 5 Fed Com 834H well in relation to the adjoining tracts to the north south, and east. Exhibit B also includes an ownership list for the affected tract to the north, showing that it is part of DOE’s WIPP facility, the tract to the south, which is operated by OXY USA, Inc., and the spacing unit to the east, which is operated by Devon. In addition, the exhibit identifies that these include state and federal leases. Accordingly, the “affected persons”¹ are DOE, OXY, the other working interest owners in Devon’s Cat Island spacing unit, State Land Office of New Mexico, and Bureau of Land Management (“BLM”).

Exhibit D is a spreadsheet listing all affected persons Devon provided notice and includes tracking information demonstrating that each of the affected persons was sent a copy of this application with all attachments by certified mail advising that any objections must be filed in writing with the Division within 20 days from the date the Division receives the application. The following are the affected persons:

Type	Affected Party	Offsetting Acreage
Operator	OXY	SE/4 of Section 17, T23S-R31E
Federal Mineral Interest	Bureau of Land Management	

¹ See 19.15.2.7.A(8) NMAC [defining “affected persons” as, “in the absence of an operator, or with respect to an application wherein the operator of the spacing unit or identified tract is the applicant, each working interest owner”] and 19.15.4.12.A(2)(a) NMAC.

N/A	Department of Energy (WIPP)	SE/4 of Section 32, T22S-R31E
Operator	Deveon Energy Production Company	W/2 of Section 4, 9, and 16, T23S-R31E
Federal Mineral Interest	Bureau of Land Management	
Working Interest Owner	Oxy Y-1 Company	
Working Interest Owner	Camterra Resources, Partners, Inc.	
Working Interest Owner	EOG Resources, Inc.	
State Land Minerals	New Mexico State Land Office	W/2 of Section 16, T23S-R31E

Your attention to this matter is appreciated.

Sincerely,



A. Raylee Starnes
**ATTORNEY FOR
 DEVON ENERGY PRODUCTION COMPANY, L.P.**



Devon Energy Production Company LP
333 West Sheridan Avenue
Oklahoma City, OK 73102

405 228 4214 Phone
www.devonenergy.com

March 17, 2026

Mr. Leonard Lowe
New Mexico Oil Conservation Division
1220 South Francis Drive
Sante Fe, New Mexico 87505

RE: Application for Non-Standard Location
Engineering Statement
Devon Energy Production Company, L.P.
Fiji 17-5 Fed Com 834H
E2 of Sections 5 & 8, & NE4 of Section 17,
T23S-R31E,
Eddy County, New Mexico

Dear Mr. Lowe:

Devon Energy Production Company, LP (“Devon”) respectfully requests administrative approval of a non-standard location for the Fiji 17 5 Fed Com 834H well referenced above. The well is in the Sand Dunes; Wolfcamp Oil Pool [96991] for the E2 of Sections 5 & 8, and in the Sand Dunes; Wolfcamp West (Gas) Pool [97672] for the NE4 of Section 17, with a planned perpendicular setback located at 330’ FEL, and first and last take points 100’ from the section lines.

The Fiji 17-5 Fed Com horizontal spacing unit, being the E2 of Section 5 & 8, and SE4 of Section 17, is directly offset to the west Cat Lanta 16-4 horizontal spacing unit, being the W2 of Section 16, 9 & 4. Devon plans to co-develop these two Wolfcamp spacing units.

It is Devon’s responsibility as a prudent operator to minimize reserves left in the ground. Co-development of these units with decreased perpendicular setbacks for the Fiji 17-5 Fed Com 834H and the Cat Lanta 16 4 Fed Com 811H will allow for optimal spacing in both the horizontal and vertical directions and decreasing the first and last take point will increase the complete horizontal lateral, together thereby increasing the ultimate recovery of reserves and preventing waste of natural resources. Approval of this non-standard location is necessary to avoid causing wasted resources and reducing production from current and future well development in the area.

Respectfully,

Devon Energy Production Company, L.P.

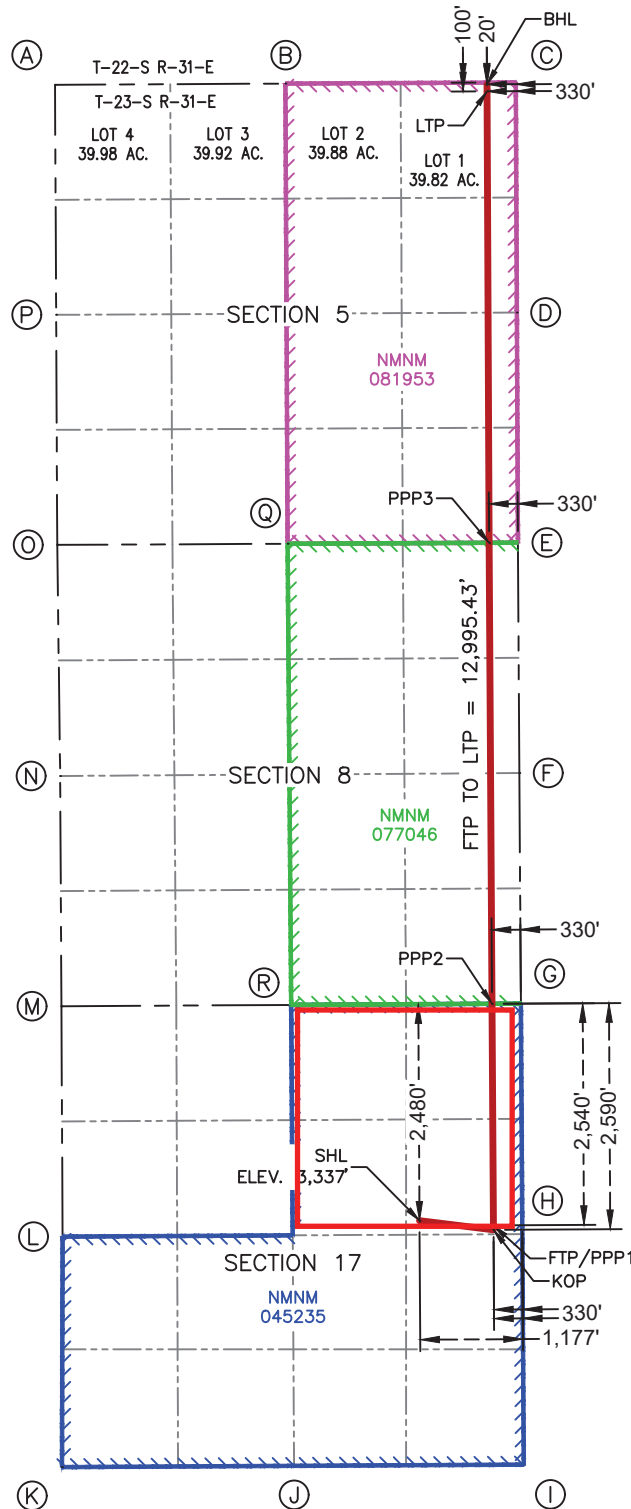
Keevin Barnes
Reservoir Engineer

ACREAGE DEDICATION PLATS

This grid represents a standard section. You may superimpose a non-standard section, or larger area, over this grid. Operators must outline the dedicated acreage in a red box, clearly show the well surface location and bottom hole location, if it is directionally drilled, with the dimensions from the section lines in the cardinal directions. If this is a horizontal wellbore show on this plat the location of the First Take Point and Last Take Point, and the point within the Completed interval (other than the First Take Point or Last Take Point) that is closest to any outer boundary of the tract.

Surveyors shall use the latest United States government survey or dependent resurvey. Well locations will be in reference to the New Mexico Principal Meridian. If the land is not surveyed, contact the OCD Engineering Bureau. Independent subdivision surveys will not be acceptable.

FIJI 17 5 FED COM 834H



SURFACE HOLE LOCATION
 2,480' FNL & 1,177' FEL
 ELEV. = 3,337'
 NAD 83 X = 707,614.24'
 NAD 83 Y = 475,079.24'
 NAD 83 LAT = 32.304919°
 NAD 83 LONG = -103.795151°

KICK-OFF POINT
 2,590' FNL & 330' FEL
 NAD 83 X = 708,461.75'
 NAD 83 Y = 474,974.03'
 NAD 83 LAT = 32.304618°
 NAD 83 LONG = -103.792410°

FIRST TAKE POINT & PENETRATION POINT 1
 2,540' FNL & 330' FEL
 NAD 83 X = 708,461.44'
 NAD 83 Y = 475,024.03'
 NAD 83 LAT = 32.304755°
 NAD 83 LONG = -103.792410°

PENETRATION POINT 2
 0' FSL & 330' FEL
 NAD 83 X = 708,445.59'
 NAD 83 Y = 477,563.98'
 NAD 83 LAT = 32.311737°
 NAD 83 LONG = -103.792420°

PENETRATION POINT 3
 0' FNL & 330' FEL
 NAD 83 X = 708,411.99'
 NAD 83 Y = 482,846.40'
 NAD 83 LAT = 32.326258°
 NAD 83 LONG = -103.792442°

LAST TAKE POINT
 100' FNL & 330' FEL
 NAD 83 X = 708,387.74'
 NAD 83 Y = 488,019.25'
 NAD 83 LAT = 32.340477°
 NAD 83 LONG = -103.792436°

BOTTOM HOLE LOCATION
 20' FNL & 330' FEL
 NAD 83 X = 708,387.37'
 NAD 83 Y = 488,099.25'
 NAD 83 LAT = 32.340697°
 NAD 83 LONG = -103.792436°

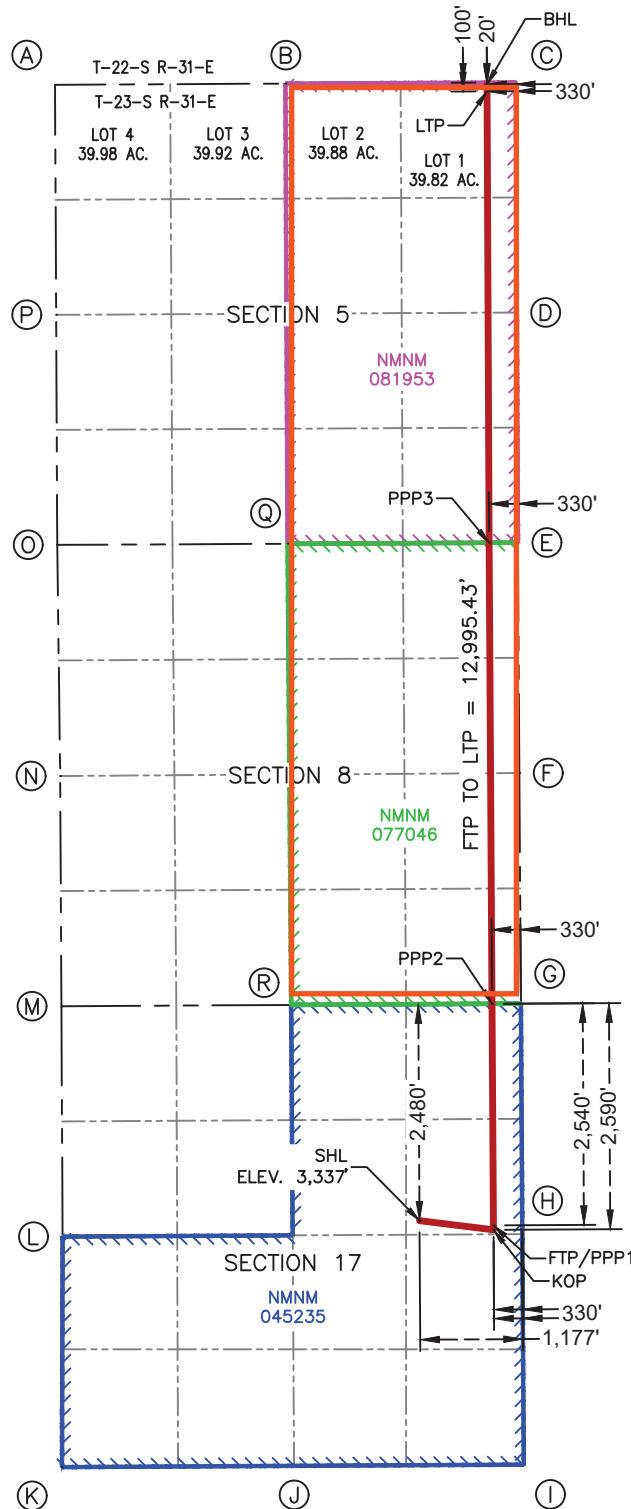
CORNER COORDINATES NEW MEXICO EAST - NAD 83	
A	IRON PIPE W/ BRASS CAP N:488,094.53' E:703,438.48'
B	CALCULATED CORNER N:488,107.71' E:706,077.87'
C	IRON PIPE W/ BRASS CAP N:488,120.90' E:708,717.27'
D	CALCULATED CORNER N:485,484.46' E:708,729.63'
E	IRON PIPE W/ BRASS CAP N:482,848.03' E:708,741.99'
F	IRON PIPE W/ BRASS CAP N:480,207.58' E:708,757.61'
G	IRON PIPE W/ BRASS CAP N:477,565.85' E:708,775.58'
H	CALCULATED CORNER N:474,924.68' E:708,792.06'
I	IRON PIPE W/ BRASS CAP N:472,283.52' E:708,808.55'
J	IRON PIPE W/ BRASS CAP N:472,269.46' E:706,177.34'
K	CALCULATED CORNER N:472,254.85' E:703,518.28'
L	IRON PIPE W/ BRASS CAP N:474,895.93' E:703,525.49'
M	IRON PIPE W/ BRASS CAP N:477,535.40' E:703,511.58'
N	IRON PIPE W/ BRASS CAP N:480,174.50' E:703,497.53'
O	IRON PIPE W/ BRASS CAP N:482,821.99' E:703,464.00'
P	CALCULATED CORNER N:485,458.26' E:703,451.24'
Q	CALCULATED CORNER N:482,835.01' E:706,103.00'
R	IRON PIPE W/ BRASS CAP N:477,550.97' E:706,144.27'

ACREAGE DEDICATION PLATS

This grid represents a standard section. You may superimpose a non-standard section, or larger area, over this grid. Operators must outline the dedicated acreage in a red box, clearly show the well surface location and bottom hole location, if it is directionally drilled, with the dimensions from the section lines in the cardinal directions. If this is a horizontal wellbore show on this plat the location of the First Take Point and Last Take Point, and the point within the Completed interval (other than the First Take Point or Last Take Point) that is closest to any outer boundary of the tract.

Surveyors shall use the latest United States government survey or dependent resurvey. Well locations will be in reference to the New Mexico Principal Meridian. If the land is not surveyed, contact the OCD Engineering Bureau. Independent subdivision surveys will not be acceptable.

FIJI 17 5 FED COM 834H



SURFACE HOLE LOCATION
 2,480' FNL & 1,177' FEL
 ELEV. = 3,337'
 NAD 83 X = 707,614.24'
 NAD 83 Y = 475,079.24'
 NAD 83 LAT = 32.304919°
 NAD 83 LONG = -103.795151°

KICK-OFF POINT
 2,590' FNL & 330' FEL
 NAD 83 X = 708,461.75'
 NAD 83 Y = 474,974.03'
 NAD 83 LAT = 32.304618°
 NAD 83 LONG = -103.792410°

FIRST TAKE POINT & PENETRATION POINT 1
 2,540' FNL & 330' FEL
 NAD 83 X = 708,461.44'
 NAD 83 Y = 475,024.03'
 NAD 83 LAT = 32.304755°
 NAD 83 LONG = -103.792410°

PENETRATION POINT 2
 0' FSL & 330' FEL
 NAD 83 X = 708,445.59'
 NAD 83 Y = 477,563.98'
 NAD 83 LAT = 32.311737°
 NAD 83 LONG = -103.792420°

PENETRATION POINT 3
 0' FNL & 330' FEL
 NAD 83 X = 708,411.99'
 NAD 83 Y = 482,846.40'
 NAD 83 LAT = 32.326258°
 NAD 83 LONG = -103.792442°

LAST TAKE POINT
 100' FNL & 330' FEL
 NAD 83 X = 708,387.74'
 NAD 83 Y = 488,019.25'
 NAD 83 LAT = 32.340477°
 NAD 83 LONG = -103.792436°

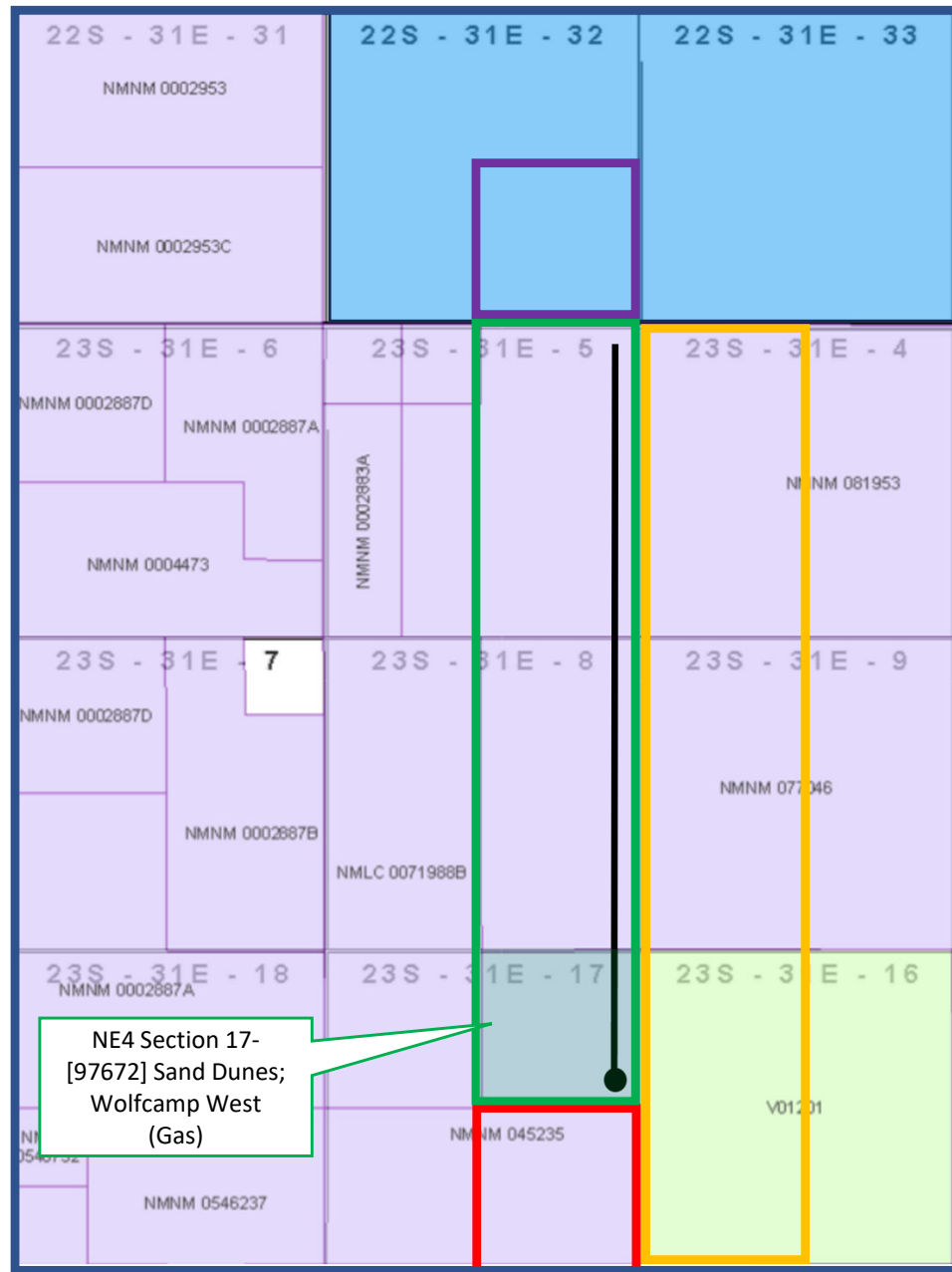
BOTTOM HOLE LOCATION
 20' FNL & 330' FEL
 NAD 83 X = 708,387.37'
 NAD 83 Y = 488,099.25'
 NAD 83 LAT = 32.340697°
 NAD 83 LONG = -103.792436°

CORNER COORDINATES NEW MEXICO EAST - NAD 83	
A	IRON PIPE W/ BRASS CAP N:488,094.53' E:703,438.48'
B	CALCULATED CORNER N:488,107.71' E:706,077.87'
C	IRON PIPE W/ BRASS CAP N:488,120.90' E:708,717.27'
D	CALCULATED CORNER N:485,484.46' E:708,729.63'
E	IRON PIPE W/ BRASS CAP N:482,848.03' E:708,741.99'
F	IRON PIPE W/ BRASS CAP N:480,207.58' E:708,757.61'
G	IRON PIPE W/ BRASS CAP N:477,565.85' E:708,775.58'
H	CALCULATED CORNER N:474,924.68' E:708,792.06'
I	IRON PIPE W/ BRASS CAP N:472,283.52' E:708,808.55'
J	IRON PIPE W/ BRASS CAP N:472,269.46' E:706,177.34'
K	CALCULATED CORNER N:472,254.85' E:703,518.28'
L	IRON PIPE W/ BRASS CAP N:474,895.93' E:703,525.49'
M	IRON PIPE W/ BRASS CAP N:477,535.40' E:703,511.58'
N	IRON PIPE W/ BRASS CAP N:480,174.50' E:703,497.53'
O	IRON PIPE W/ BRASS CAP N:482,821.99' E:703,464.00'
P	CALCULATED CORNER N:485,458.26' E:703,451.24'
Q	CALCULATED CORNER N:482,835.01' E:706,103.00'
R	IRON PIPE W/ BRASS CAP N:477,550.97' E:706,144.27'

Fiji 17 5 Fed Com 834H- NSL

EXHIBIT C

- Federal Lease
- State Lease
- Unleased



FTP: 2540' FNL & 330' FEL, Sec 17
LTP: 100' FNL & 330' FEL, Sec 5

Horizontal Spacing Unit
Devon Operated- Fiji
NE4 of Section 17, E2 of
Sections 8 & 5
T23S-R31E

Affected Offsetting Tract-
Unleased Federal
Minerals/WIPP
SE4 of Section 32,
T22S-R31E

Affected Offsetting Spacing
Unit
OXY Operated-
Pure Gold MDP1 29 17
SE4 of Sections 17, E2 of
Sections 20 & 29
T23S-R31E

Affected Offsetting Spacing
Unit
Devon Operated-
Cat Island 16-4
W2 of Sections 16, 9 & 4
T23S-R31E

Bureau of Land Management	620 E. Greene Street	Carlsbad NM	88220-6292
Bureau of Land Management	301 Dinosaur Trail	Santa Fe NM	87508
Camterra Resources Partners, Ltd.	3811 Turtle Creek Drive, Suite 1275	Dallas TX	75219
EOG Resources, Inc.	Midland Division - Land Dept., 5509 Champions Drive	Midland TX	79706
New Mexico Oil Conservation Division	1220 South St. Francis Dr.	Santa Fe NM	87505
New Mexico State Land Office	310 Old Santa Fe Trail	Santa Fe NM	87504-1148
New Mexico State Land Office	P.O. Box 1148	Santa Fe NM	87504
OXY USA Inc.	5 Greenway Plaza, Suite 110	Houston TX	77046
OXY Y-1 Company	5 Greenway Plaza, Suite 110	Houston TX	77046
U.S. Department of Energy	4021 National Parks Highway	Carlsbad NM	88220



A. Raylee Starnes
Associate
Phone (505) 954-3669
arstarnes@hollandhart.com

April 1, 2026

VIA CERTIFIED MAIL
RETURN RECEIPT REQUESTED

TO: ALL AFFECTED PERSONS

Re: Devon Energy Production Company, L.P
Request for Administrative Approval of an Unorthodox Well Location

Fiji 17 5 Fed Com 834H well
Lots 1-2, S/2 NE/4, and NW/4 (E/2 equivalent) of irregular Section 5, E/2 of Section 8,
and NE/4 of Section 17, Township 23 South, Range 31 East, NMPM, Eddy County, New
Mexico
Sand Dunes; Wolfcamp, West (gas) [97672]
API No. 30-015-57733

Ladies and Gentlemen:

Enclosed is a copy of the above-referenced application which was filed with the New Mexico Oil Conservation Division on this date. Any objection to this application must be filed in writing within twenty days from the date this application is received by the New Mexico Oil Conservation Division, 1220 South St. Francis Drive, Santa Fe, New Mexico, 87505. If no objection is received within this twenty-day period, this application may be approved administratively by the Division.

If you have any questions about this application, please contact the following:

Aaron Young
Devon Energy Production Company, L.P.
(405) 228-2850
Aaron.Young@dvn.com

Sincerely,

A. Raylee Starnes
ATTORNEY FOR
DEVON ENERGY PRODUCTION COMPANY, L.P

T 505.954.3669 F 505.983.6043
110 North Guadalupe, Suite 1, Santa Fe, NM 87501-1849
Mail to: P.O. Box 2208, Santa Fe, NM 87504-2208
www.hollandhart.com

Alaska	Montana	Utah
Colorado	Nevada	Washington, D.C.
Idaho	New Mexico	Wyoming

Devon - Fiji 834H - NSL
Postal Delivery Report

9414811898765525374180	Bureau of Land Management	620 E Greene St	Carlsbad	NM	88220-6292	Your item was delivered to an individual at the address at 12:34 pm on April 9, 2026 in CARLSBAD, NM 88220.
9414811898765525374135	Bureau of Land Management	301 Dinosaur Trl	Santa Fe	NM	87508-1560	Your item was delivered to the front desk, reception area, or mail room at 11:43 am on April 3, 2026 in SANTA FE, NM 87508.
9414811898765525374173	Camterra Resources Partners, Ltd.	3811 Turtle Creek Blvd Ste 1275	Dallas	TX	75219-4556	Your item was delivered to the front desk, reception area, or mail room at 4:29 pm on April 4, 2026 in DALLAS, TX 75219.
9414811898765525374319	EOG Resources, Inc.	5509 Champions Dr Midland Division - Land Dept	Midland	TX	79706-2843	Your item was picked up at the post office at 8:22 am on April 6, 2026 in MIDLAND, TX 79701.
9414811898765525374364	New Mexico Oil Conservation Division	1220 S St Francis Dr	Santa Fe	NM	87505-4225	Your item was delivered to the front desk, reception area, or mail room at 10:34 am on April 3, 2026 in SANTA FE, NM 87505.
9414811898765525374326	New Mexico State Land Office	310 Old Santa Fe Trl	Santa Fe	NM	87501-2708	Your item was picked up at the post office at 7:34 am on April 8, 2026 in SANTA FE, NM 87501.
9414811898765525374302	New Mexico State Land Office	PO Box 1148	Santa Fe	NM	87504-1148	Your item was picked up at the post office at 7:57 am on April 6, 2026 in SANTA FE, NM 87501.
9414811898765525374340	OXY USA Inc.	5 Greenway Plz Ste 110	Houston	TX	77046-0521	Your item has been delivered to an agent at the front desk, reception, or mail room at 10:43 am on April 4, 2026 in HOUSTON, TX 77046.
9414811898765525374388	OXY Y-1 Company	5 Greenway Plz Ste 110	Houston	TX	77046-0521	Your item has been delivered to an agent at the front desk, reception, or mail room at 10:43 am on April 4, 2026 in HOUSTON, TX 77046.
9414811898765525374333	U.S. Department of Energy	4021 National Parks Hwy	Carlsbad	NM	88220-9082	Your item has been delivered and is available at a PO Box at 7:26 am on April 6, 2026 in CARLSBAD, NM 88220.

Sante Fe Main Office
Phone: (505) 476-3441

General Information
Phone: (505) 629-6116

Online Phone Directory
<https://www.emnrd.nm.gov/oecd/contact-us>

State of New Mexico
Energy, Minerals and Natural Resources
Oil Conservation Division
1220 S. St Francis Dr.
Santa Fe, NM 87505

CONDITIONS

Action 578982

CONDITIONS

Operator: DEVON ENERGY PRODUCTION COMPANY, LP 333 West Sheridan Ave. Oklahoma City, OK 73102	OGRID: 6137
	Action Number: 578982
	Action Type: [UF-NSL] Non-Standard Location (NSL)

CONDITIONS

Created By	Condition	Condition Date
llowe	None	5/27/2026