

**CASE NO. 24347**

**APPLICATION OF MEWBOURNE OIL COMPANY  
FOR COMPULSORY POOLING, LEA COUNTY, NEW MEXICO**

**EXHIBIT LIST - Part I - Revised**

1. Pooling Checklist
2. Landman's Affidavit
  - 2-A: C-102s
  - 2-B, 2-C, and 2-D: Tract Maps and Ownership Lists
  - 2-E: Summary of Communications and Proposal Letter
  - 2-F: AFEs
  - 2-G: Offset Information

**JAMES BRUCE**  
ATTORNEY AT LAW

POST OFFICE BOX 1056  
SANTA FE, NEW MEXICO 87504

369 MONTEZUMA, NO. 213  
SANTA FE, NEW MEXICO 87501

(505) 982-2043 (Phone)  
(505) 660-6612 (Cell)

[jamesbruc@aol.com](mailto:jamesbruc@aol.com)

8  
April 8, 2024

NOTICE OF FILING REVISED EXHIBIT PACKAGES

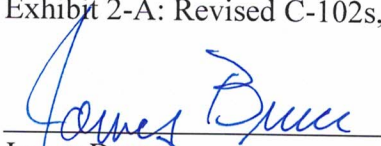
Case No. 24347

The revised exhibit packages contain:

Part I

Exhibit 1: A revised pooling checklist, reflecting two pools and pool codes. It also corrects a typo on page 1.

Exhibit 2-A: Revised C-102s, reflecting two pools and pool codes.

  
James Bruce  
Attorney for Mewbourne Oil Company

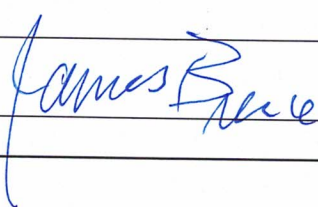
<b>COMPULSORY POOLING APPLICATION CHECKLIST</b>	
<b>ALL INFORMATION IN THE APPLICATION MUST BE SUPPORTED BY SIGNED AFFIDAVITS</b>	
<b>Case: 24347</b>	<b>APPLICANT'S RESPONSE</b>
<b>Date: April 4, 2024</b>	
Applicant	Mewbourne Oil Company
Designated Operator & OGRID (affiliation if applicable)	Mewbourne Oil Company/OGRID 14744
Applicant's Counsel:	James Bruce
Case Title:	Application of Mewbourne Oil Company for Compulsory Pooling and Approval of a Non-Standard Spacing Unit, Lea County, New Mexico
Entries of Appearance/Intervenors:	
Well Family	Cow Bell Bone Spring wells
<b>Formation/Pool</b>	
Formation Name(s) or Vertical Extent:	Bone Spring
Primary Product (Oil or Gas):	Oil
Pooling this vertical extent:	Entire Bone Spring formation
Pool Name and Pool Code:	Quail Ridge; Bone Spring /Pool Code 50460 (E/2§9-T19S-R34E) EK; Bone Spring/Pool Code 21650 (E/2 §4-T19S-R34E)
Well Location Setback Rules:	Statewide Rules
<b>Spacing Unit</b>	
Type (Horizontal/Vertical)	Horizontal
Size (Acres)	640 acres
Building Blocks:	40 acres
Orientation:	South-North
Description: TRS/County	E/2 §9 and E/2 §4, Township 19 South, Range 34 East, NMPPM, Lea County
Standard Horizontal Well Spacing Unit (Y/N), If No, describe <u>and is approval of non-standard unit requested in this application?</u>	No. Approval of the NSP is requested in this application.
	EXHIBIT /
<b>Other Situations</b>	
Depth Severance: Y/N. If yes, description	N
Proximity Tracts: If yes, description	N



Proximity Defining Well: if yes, description	
Applicant's Ownership in Each Tract	Exhibit 2-B
<b>Well(s)</b>	
Name & API (if assigned), surface and bottom hole location, footages, completion target, orientation, completion status (standard or non-standard)	Add wells as needed
Well #1	Cow Bell 9/4 B3OB Fed. Com. Well No. 1 API No. 30-025-Pending SHL: 205 FSL & 1855 FEL \$9 BHL: 100 FNL & 2050 FEL \$4 FTP: 100 FSL & 2050 FEL \$9 LTP: 100 FNL & 2050 FEL \$4 Third Bone Spring/TVD 10750 feet/MD 20930 feet
Well #2	Cow Bell 9/4 B3PA Fed. Com. Well No. 1 API No. 30-025-Pending SHL: 210 FSL & 1825 FEL \$9 BHL: 100 FNL & 660 FEL \$4 FTP: 100 FSL & 660 FEL \$9 LTP: 100 FNL & 660 FEL \$4 Third Bone Spring/TVD 10750 feet/MD 20950 feet
Horizontal Well First and Last Take Points	See above
Completion Target (Formation, TVD and MD)	See above
<b>AFE Capex and Operating Costs</b>	
Drilling Supervision/Month \$	\$10000
Production Supervision/Month \$	\$1000
Justification for Supervision Costs	Exhibit 2, page 2
Requested Risk Charge	Cost plus 200%
<b>Notice of Hearing</b>	
Proposed Notice of Hearing	Exhibit 7
Proof of Mailed Notice of Hearing (20 days before hearing)	Exhibit 4
Proof of Published Notice of Hearing (10 days before hearing)	Exhibit 6



<b>Ownership Determination</b>	
Land Ownership Schematic of the Spacing Unit	Exhibits 2-B and 2-C
Tract List (including lease numbers and owners)	Exhibits 2-B and 2-C
If approval of Non-Standard Spacing Unit is requested, Tract List (including lease numbers and owners) of Tracts subject to notice requirements.	
Pooled Parties (including ownership type)	Exhibits 2-B and 2-C; Working Interest Owners and Record Title Owners
Unlocatable Parties to be Pooled	Yes
Ownership Depth Severance (including percentage above & below)	No Depth Severance
<b>Joinder</b>	
Sample Copy of Proposal Letter	Exhibit 2-E
List of Interest Owners (i.e. Exhibit A of JOA)	Exhibits 2-B and 2-C
Chronology of Contact with Non-Joined Working Interests	Exhibit 2-E
Overhead Rates In Proposal Letter	
Cost Estimate to Drill and Complete	Exhibit 2-F
Cost Estimate to Equip Well	Exhibit 2-F
Cost Estimate for Production Facilities	Exhibit 2-F
<b>Geology</b>	
Summary (including special considerations)	Exhibit 3
Spacing Unit Schematic	Exhibits 2-A and 3-A
Gunbarrel/Lateral Trajectory Schematic	Exhibits 3-B and 3-C
Well Orientation (with rationale)	South-North; Exhibits 3, 3-A, and 3-B
Target Formation	Bone Spring
HSU Cross Section	Exhibit 3-B
Depth Severance Discussion	N/A
<b>Forms, Figures and Tables</b>	
C-102	Exhibit 2-A

Tracts	Exhibits 2-B and 2-C
Summary of Interests, Unit Recapitulation (Tracts)	Exhibits 2-B and 2-C
General Location Map (including basin)	Exhibit 3-A
Well Bore Location Map	Exhibits 2-A and 3-C
Structure Contour Map - Subsea Depth	Exhibit 3-A
Cross Section Location Map (including wells)	Exhibit 3-B
Cross Section (including Landing Zone)	Exhibit 3-B
<b>Additional Information</b>	
Special Provisions/Stipulations	
<b>CERTIFICATION: I hereby certify that the information provided in this checklist is complete and accurate.</b>	
<b>Printed Name</b> (Attorney or Party Representative):	James Bruce
<b>Signed Name</b> (Attorney or Party Representative):	
<b>Date:</b>	April 2, 2024



**STATE OF NEW MEXICO  
ENERGY, MINERALS AND NATURAL RESOURCES DEPARTMENT  
OIL CONSERVATION DIVISION**

**APPLICATION OF MEWBOURNE OIL  
COMPANY FOR APPROVAL OF A  
NON-STANDARD SPACING UNIT AND  
COMPULSORY POOLING, LEA COUNTY,  
NEW MEXICO.**

**Case No. 24347**

**SELF-AFFIRMED STATEMENT OF THOMAS SLOAN**

Thomas Sloan deposes and states:

1. I am a landman for Mewbourne Oil Company ("Mewbourne"), and have personal knowledge of the matters stated herein. I have been qualified by the Division as an expert petroleum landman.
  2. The purpose of this application is to force pool working interest and unleased mineral interest owners into the Bone Spring horizontal spacing unit described below, as well as Record Title Owners of several leases for purposes of obtaining approval of a communitization agreement.
  3. The interest owners being pooled have been contacted regarding the proposed wells but have simply refused to voluntarily commit their interests to the wells.
  4. In this case Mewbourne seeks an order pooling all uncommitted mineral interest owners in the Bone Spring formation underlying a non-standard horizontal spacing unit comprised of the of the E/2 of Section 9 and Lots 1, 2, the S/2NE/4, and the SE/4 (the E/2) of Section 4, Township 19 South, Range 34 East, N.M.P.M., Eddy County, New Mexico. The unit will be dedicated to (a) the Cow Bell 9/4 B3PA Fed Com 1H, to be drilled from a surface location in the SW4SE4 of Section 9 to a bottom hole location in Lot 1 of Section 4, and (b) the Cow Bell 9/4 B3OB Fed Com 1H to be drilled from a surface location in the SW4SE4 of Section 9 to a bottom hole location in Lot 2 of Section 4.
  5. There are no depth severances in the Bone Spring formation.
  6. C-102s for the wells are marked as Exhibit 2-A. Land plats and information on the parties being pooled, and their interests, are set forth in Exhibits 2-B and 2-C.
- Some interest owners are or may be unlocatable. To find the addresses for the parties we examined county and government records, and also conducted internet searches including google and drillinginfo. A notice list is attached as Exhibit 2-D.

EXHIBIT

2

7. Exhibit 2-E contains a summary of communications with the uncommitted parties, and a sample copy of the proposal letters sent to the interest owners.

AFE for the wells are marked Exhibit 2-F. The costs in the AFEs are fair and reasonable for wells of this depth and length in this area of Lea County.

8. Mewbourne has made a good faith effort to locate or obtain the voluntary joinder of the working interest and mineral owners in the proposed wells.

9. Mewbourne requests overhead and administrative rates of \$10000/month for a drilling well and \$1000/month for a producing well. These rates are fair, and comparable to the rates charged by other operators for wells of this type in this portion of Lea County. They are also the rates set forth in the Joint Operating Agreement for the well unit. Mewbourne requests that these rates be adjusted periodically as provided in the COPAS Accounting Procedure.

10. Mewbourne requests that the maximum cost plus 200% risk charge be assessed against non-consenting working interest owners.

11. Applicant requests that it be designated operator of the wells.

12. Mewbourne requests approval of the non-standard unit in this application. Exhibit 2-G is a plat showing affected offsetting tracts and the interest owners entitled to notice.

13. The attachments to this affidavit were prepared by me or under my supervision, or compiled from company business records.

14. The granting of this application is in the interests of conservation and the prevention of waste.

I understand that this Self-Affirmed Statement will be used as written testimony in these cases. I affirm that my testimony in paragraphs 1 through 14 above is true and correct and is made under penalty of perjury under the laws of the State of New Mexico. My testimony is made as of the date handwritten next to my signature below.

April 2, 2024  
Date

/c/ Thomas Sloan  
Thomas Sloan



District I  
1625 N. French Dr., Hobbs, NM 88240  
Phone: (575) 393-6161 Fax: (575) 393-0720  
District II  
811 S. First St., Artesia, NM 88210  
Phone: (575) 748-1283 Fax: (575) 748-9720  
District III  
1000 Rio Brazos Road, Aztec, NM 87410  
Phone: (505) 334-6178 Fax: (505) 334-6170  
District IV  
1220 S. St. Francis Dr., Santa Fe, NM 87505  
Phone: (505) 476-3460 Fax: (505) 476-3462

State of New Mexico  
Energy, Minerals & Natural Resources Department  
OIL CONSERVATION DIVISION  
1220 South St. Francis Dr.  
Santa Fe, NM 87505

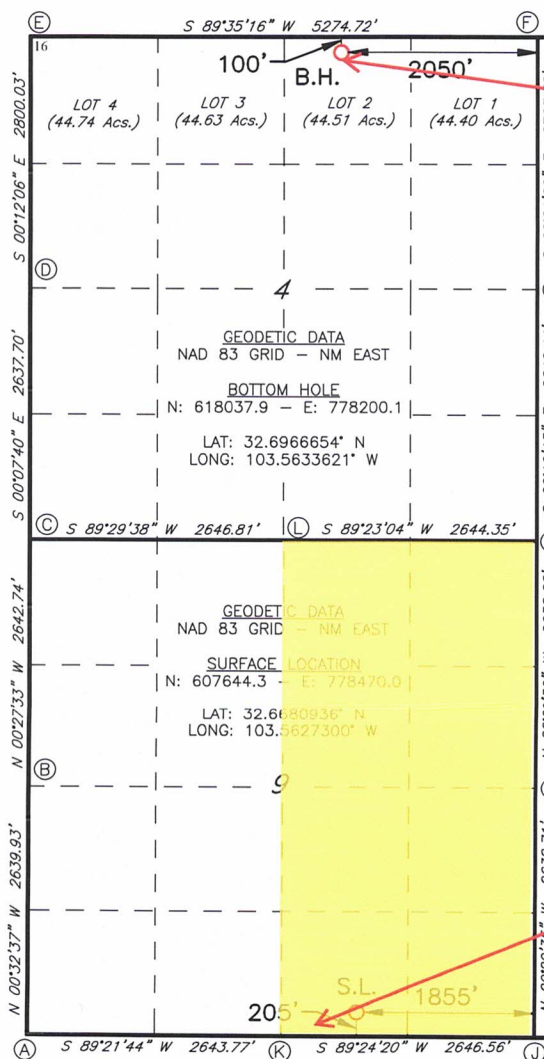
Form C-102  
Revised August 1, 2011  
Submit one copy to appropriate  
District Office

☐ AMENDED REPORT

WELL LOCATION AND ACREAGE DEDICATION PLAT

<sup>1</sup> API Number <b>PENDING</b>		<sup>2</sup> Pool Code <b>50460</b>		<sup>3</sup> Pool Name <b>QUAIL RIDGE; BONE SPRING</b>					
<sup>4</sup> Property Code		<sup>5</sup> Property Name <b>COW BELL 9/4 B30B FED COM</b>						<sup>6</sup> Well Number <b>1H</b>	
<sup>7</sup> OGRID NO. <b>14744</b>		<sup>8</sup> Operator Name <b>MEWBOURNE OIL COMPANY</b>						<sup>9</sup> Elevation <b>3821'</b>	
<sup>10</sup> Surface Location									
UL or lot no. <b>0</b>	Section <b>9</b>	Township <b>19S</b>	Range <b>34E</b>	Lot Idn	Feet from the <b>205</b>	North/South line <b>SOUTH</b>	Feet From the <b>1855</b>	East/West line <b>EAST</b>	County <b>LEA</b>
<sup>11</sup> Bottom Hole Location If Different From Surface									
UL or lot no. <b>2</b>	Section <b>4</b>	Township <b>19S</b>	Range <b>34E</b>	Lot Idn	Feet from the <b>100</b>	North/South line <b>NORTH</b>	Feet from the <b>2050</b>	East/West line <b>EAST</b>	County <b>LEA</b>
<sup>12</sup> Dedicated Acres <b>648.91</b>		<sup>13</sup> Joint or Infill		<sup>14</sup> Consolidation Code		<sup>15</sup> Order No.			

No allowable will be assigned to this completion until all interest have been consolidated or a non-standard unit has been approved by the division.



<sup>17</sup> OPERATOR CERTIFICATION

I hereby certify that the information contained herein is true and complete to the best of my knowledge and belief, and that this organization either owns a working interest or unleased mineral interest in the land including

EXHIBIT 2-A

Signature \_\_\_\_\_ Date \_\_\_\_\_  
Printed Name \_\_\_\_\_  
E-mail Address \_\_\_\_\_

<sup>18</sup> SURVEYOR CERTIFICATION

I hereby certify that the well location shown on this plat was plotted from field notes of actual surveys made by me or under my supervision, and that the same is true and correct to the best of my belief.

**03/29/2022**

Date of Survey

Signature and Seal of Professional Surveyor

**19680**

Certificate Number

Job No: LS22030176

**District I**  
1625 N. French Dr., Hobbs, NM 88240  
Phone: (575) 393-6161 Fax: (575) 393-0720

**District II**  
811 S. First St., Artesia, NM 88210  
Phone: (575) 748-1283 Fax: (575) 748-9720

**District III**  
1000 Rio Brazos Road, Aztec, NM 87410  
Phone: (505) 334-6178 Fax: (505) 334-6170

**District IV**  
1220 S. St. Francis Dr., Santa Fe, NM 87505  
Phone: (505) 476-3460 Fax: (505) 476-3462

State of New Mexico  
Energy, Minerals & Natural Resources Department  
OIL CONSERVATION DIVISION  
1220 South St. Francis Dr.  
Santa Fe, NM 87505

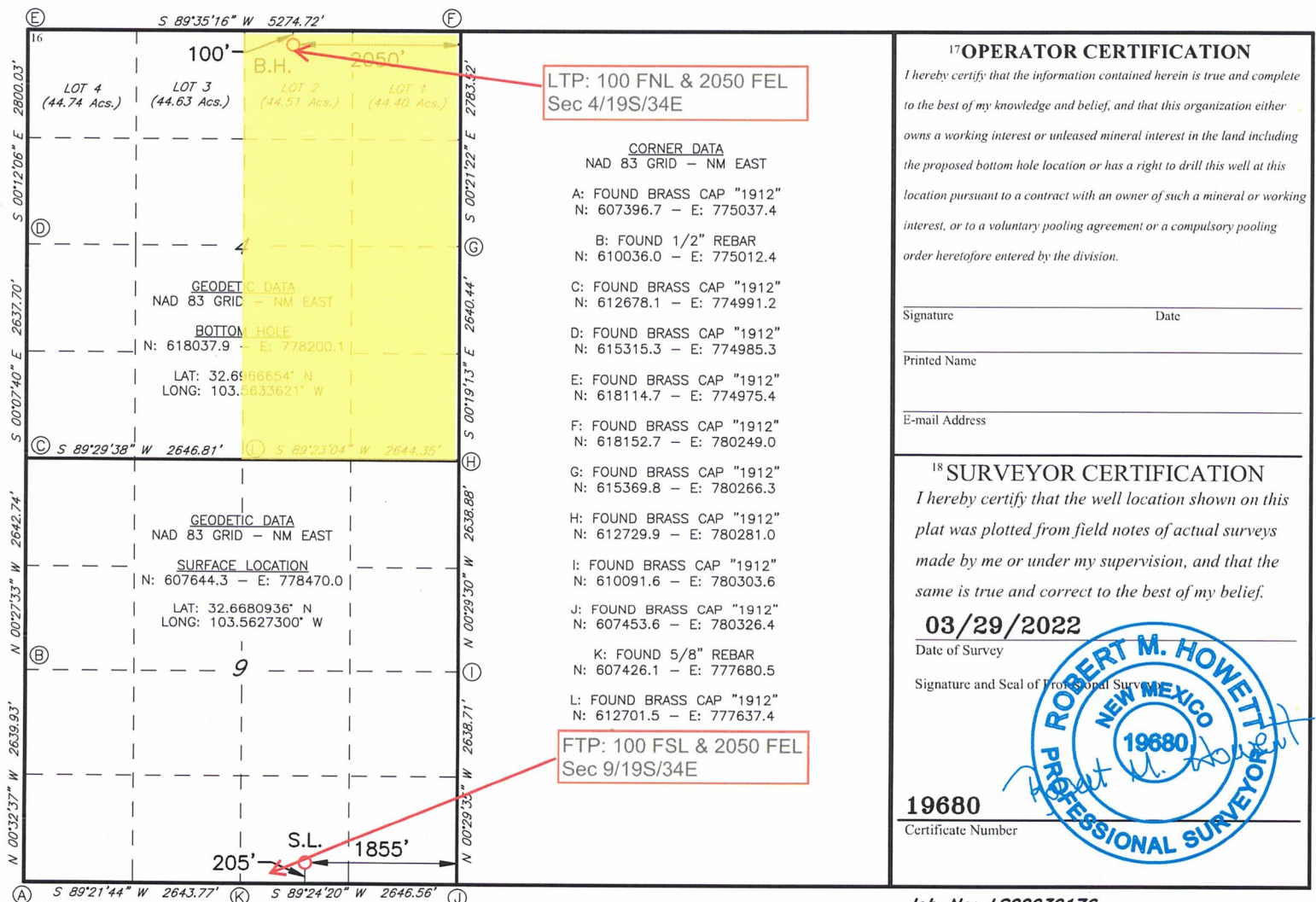
Form C-102  
Revised August 1, 2011  
Submit one copy to appropriate  
District Office

☐ AMENDED REPORT

## WELL LOCATION AND ACREAGE DEDICATION PLAT

<sup>1</sup> API Number <b>PENDING</b>		<sup>2</sup> Pool Code <b>21650</b>		<sup>3</sup> Pool Name <b>E-K; BONE SPRING</b>					
<sup>4</sup> Property Code		<sup>5</sup> Property Name <b>COW BELL 9/4 B30B FED COM</b>						<sup>6</sup> Well Number <b>1H</b>	
<sup>7</sup> OGRID NO. <b>14744</b>		<sup>8</sup> Operator Name <b>MEWBOURNE OIL COMPANY</b>						<sup>9</sup> Elevation <b>3821'</b>	
<sup>10</sup> Surface Location									
UL or lot no. <b>0</b>	Section <b>9</b>	Township <b>19S</b>	Range <b>34E</b>	Lot Idn	Feet from the <b>205</b>	North/South line <b>SOUTH</b>	Feet From the <b>1855</b>	East/West line <b>EAST</b>	County <b>LEA</b>
<sup>11</sup> Bottom Hole Location If Different From Surface									
UL or lot no. <b>2</b>	Section <b>4</b>	Township <b>19S</b>	Range <b>34E</b>	Lot Idn	Feet from the <b>100</b>	North/South line <b>NORTH</b>	Feet from the <b>2050</b>	East/West line <b>EAST</b>	County <b>LEA</b>
<sup>12</sup> Dedicated Acres <b>648.91</b>		<sup>13</sup> Joint or Infill		<sup>14</sup> Consolidation Code		<sup>15</sup> Order No.			

No allowable will be assigned to this completion until all interest have been consolidated or a non-standard unit has been approved by the division.





District I  
1625 N. French Dr., Hobbs, NM 88240  
Phone: (575) 393-6161 Fax: (575) 393-0720  
District II  
811 S. First St., Artesia, NM 88210  
Phone: (575) 748-1283 Fax: (575) 748-9720  
District III  
1000 Rio Brazos Road, Aztec, NM 87410  
Phone: (505) 334-6178 Fax: (505) 334-6170  
District IV  
1220 S. St. Francis Dr., Santa Fe, NM 87505  
Phone: (505) 476-3460 Fax: (505) 476-3462

State of New Mexico  
Energy, Minerals & Natural Resources Department  
OIL CONSERVATION DIVISION  
1220 South St. Francis Dr.  
Santa Fe, NM 87505

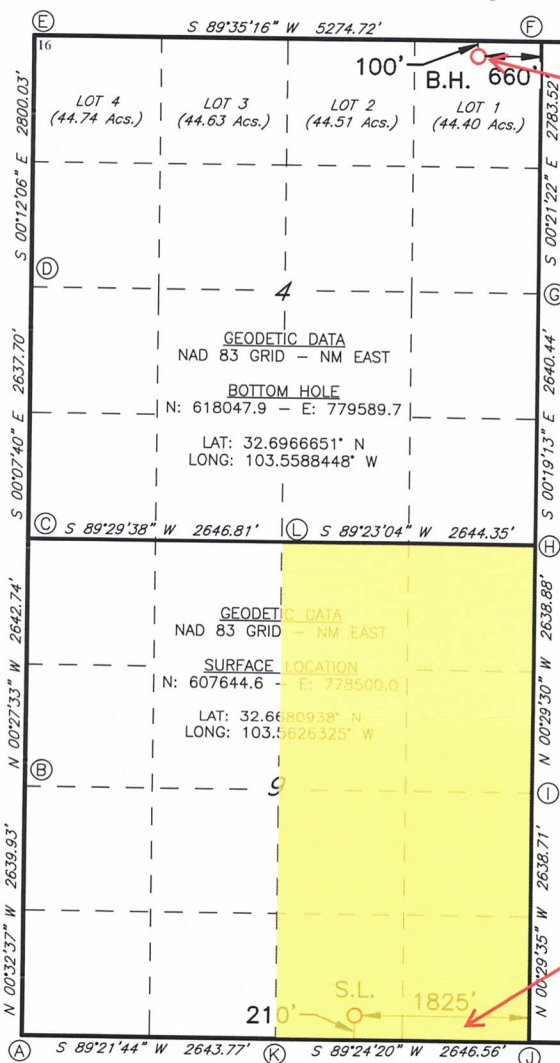
Form C-102  
Revised August 1, 2011  
Submit one copy to appropriate  
District Office

☐ AMENDED REPORT

WELL LOCATION AND ACREAGE DEDICATION PLAT

<sup>1</sup> API Number <b>PENDING</b>		<sup>2</sup> Pool Code <b>50460</b>		<sup>3</sup> Pool Name <b>QUAIL RIDGE; BONE SPRING</b>					
<sup>4</sup> Property Code		<sup>5</sup> Property Name <b>COW BELL 9/4 B3PA FED COM</b>						<sup>6</sup> Well Number <b>1H</b>	
<sup>7</sup> OGRID NO. <b>14744</b>		<sup>8</sup> Operator Name <b>MEWBOURNE OIL COMPANY</b>						<sup>9</sup> Elevation <b>3821'</b>	
<sup>10</sup> Surface Location									
UL or lot no. <b>0</b>	Section <b>9</b>	Township <b>19S</b>	Range <b>34E</b>	Lot Idn	Feet from the <b>210</b>	North/South line <b>SOUTH</b>	Feet From the <b>1825</b>	East/West line <b>EAST</b>	County <b>LEA</b>
<sup>11</sup> Bottom Hole Location If Different From Surface									
UL or lot no. <b>1</b>	Section <b>4</b>	Township <b>19S</b>	Range <b>34E</b>	Lot Idn	Feet from the <b>100</b>	North/South line <b>NORTH</b>	Feet from the <b>660</b>	East/West line <b>EAST</b>	County <b>LEA</b>
<sup>12</sup> Dedicated Acres <b>648.91</b>		<sup>13</sup> Joint or Infill		<sup>14</sup> Consolidation Code		<sup>15</sup> Order No.			

No allowable will be assigned to this completion until all interest have been consolidated or a non-standard unit has been approved by the division.



LTP: 100 FNL & 660  
FEL Sec 4/19S/34E

CORNER DATA  
NAD 83 GRID - NM EAST

A: FOUND BRASS CAP "1912"  
N: 607396.7 - E: 775037.4

B: FOUND 1/2" REBAR  
N: 610036.0 - E: 775012.4

C: FOUND BRASS CAP "1912"  
N: 612678.1 - E: 774991.2

D: FOUND BRASS CAP "1912"  
N: 615315.3 - E: 774985.3

E: FOUND BRASS CAP "1912"  
N: 618114.7 - E: 774975.4

F: FOUND BRASS CAP "1912"  
N: 618152.7 - E: 780249.0

G: FOUND BRASS CAP "1912"  
N: 615369.8 - E: 780266.3

H: FOUND BRASS CAP "1912"  
N: 612729.9 - E: 780281.0

I: FOUND BRASS CAP "1912"  
N: 610091.6 - E: 780303.6

J: FOUND BRASS CAP "1912"  
N: 607453.6 - E: 780326.4

K: FOUND 5/8" REBAR  
N: 607426.1 - E: 777680.5

L: FOUND BRASS CAP "1912"  
N: 612701.5 - E: 777637.4

FTP: 100 FSL & 660  
FEL Sec 9/19S/34E

<sup>17</sup> OPERATOR CERTIFICATION

I hereby certify that the information contained herein is true and complete to the best of my knowledge and belief, and that this organization either owns a working interest or unleased mineral interest in the land including the proposed bottom hole location or has a right to drill this well at this location pursuant to a contract with an owner of such a mineral or working interest, or to a voluntary pooling agreement or a compulsory pooling order heretofore entered by the division.

Signature \_\_\_\_\_ Date \_\_\_\_\_

Printed Name \_\_\_\_\_

E-mail Address \_\_\_\_\_

<sup>18</sup> SURVEYOR CERTIFICATION

I hereby certify that the well location shown on this plat was plotted from field notes of actual surveys made by me or under my supervision, and that the same is true and correct to the best of my belief.

03/29/2022

Date of Survey \_\_\_\_\_

Signature and Seal of Professional Surveyor \_\_\_\_\_

19680

Certificate Number



Job No: LS22030177

District I  
1625 N. French Dr., Hobbs, NM 88240  
Phone: (575) 393-6161 Fax: (575) 393-0720  
District II  
811 S. First St., Artesia, NM 88210  
Phone: (505) 748-1283 Fax: (505) 748-9720  
District III  
1000 Rio Brazos Road, Aztec, NM 87410  
Phone: (505) 334-6178 Fax: (505) 334-6170  
District IV  
1220 S. St. Francis Dr., Santa Fe, NM 87505  
Phone: (505) 476-3460 Fax: (505) 476-3462

State of New Mexico  
Energy, Minerals & Natural Resources Department  
OIL CONSERVATION DIVISION  
1220 South St. Francis Dr.  
Santa Fe, NM 87505

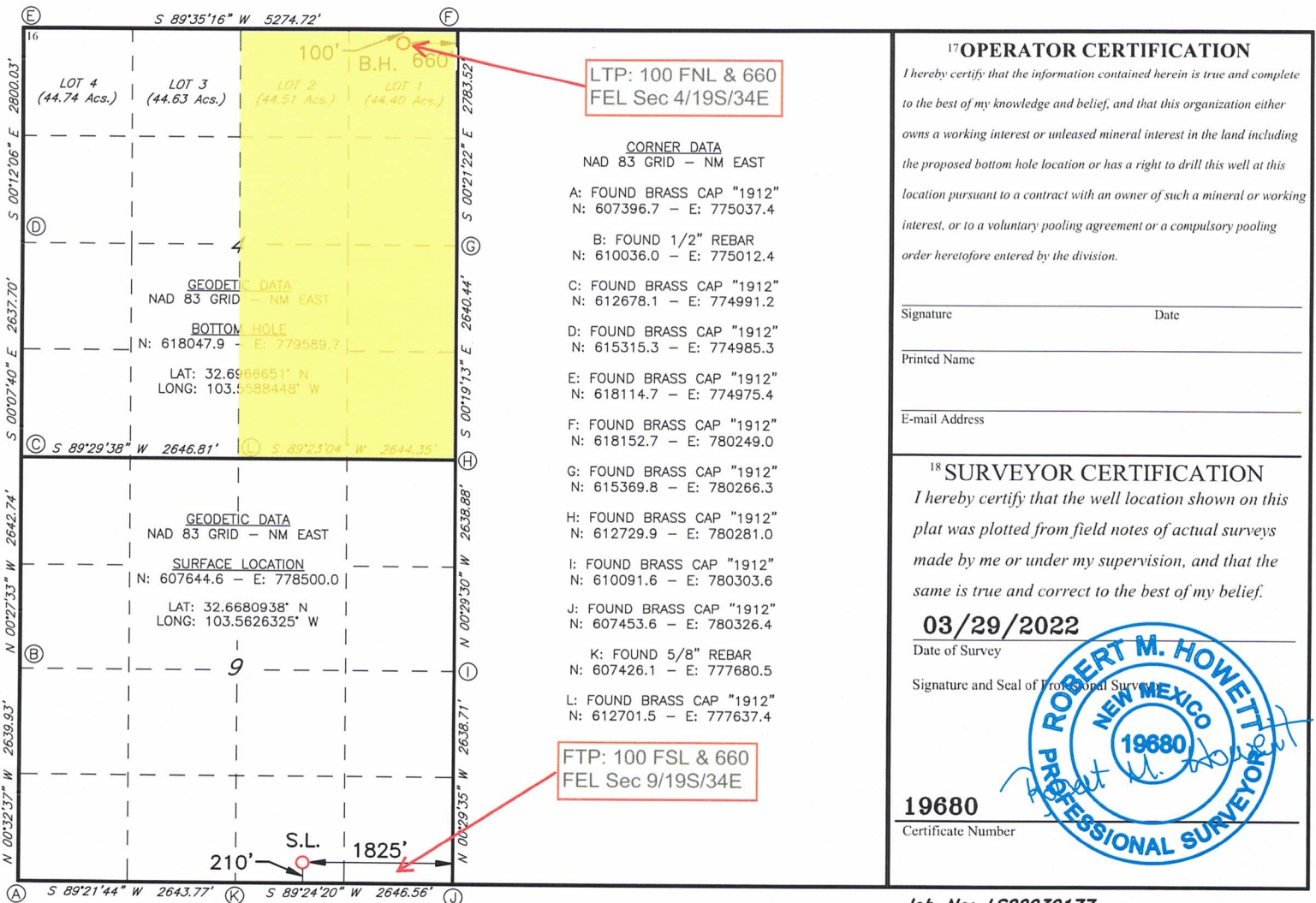
Form C-102  
Revised August 1, 2011  
Submit one copy to appropriate  
District Office

☐ AMENDED REPORT

WELL LOCATION AND ACREAGE DEDICATION PLAT

<sup>1</sup> API Number <b>PENDING</b>		<sup>2</sup> Pool Code <b>21650</b>		<sup>3</sup> Pool Name <b>E-K; BONE SPRING</b>					
<sup>4</sup> Property Code		<sup>5</sup> Property Name <b>COW BELL 9/4 B3PA FED COM</b>						<sup>6</sup> Well Number <b>1H</b>	
<sup>7</sup> OGRID NO. <b>14744</b>		<sup>8</sup> Operator Name <b>MEWBOURNE OIL COMPANY</b>						<sup>9</sup> Elevation <b>3821'</b>	
<sup>10</sup> Surface Location									
UL or lot no. <b>0</b>	Section <b>9</b>	Township <b>19S</b>	Range <b>34E</b>	Lot Idn	Feet from the <b>210</b>	North/South line <b>SOUTH</b>	Feet From the <b>1825</b>	East/West line <b>EAST</b>	County <b>LEA</b>
<sup>11</sup> Bottom Hole Location If Different From Surface									
UL or lot no. <b>1</b>	Section <b>4</b>	Township <b>19S</b>	Range <b>34E</b>	Lot Idn	Feet from the <b>100</b>	North/South line <b>NORTH</b>	Feet from the <b>660</b>	East/West line <b>EAST</b>	County <b>LEA</b>
<sup>12</sup> Dedicated Acres <b>648.91</b>		<sup>13</sup> Joint or Infill		<sup>14</sup> Consolidation Code		<sup>15</sup> Order No.			

No allowable will be assigned to this completion until all interest have been consolidated or a non-standard unit has been approved by the division.





**COWBELL 9/4 POOLING PLAT AND  
WORKING INTEREST OWNERSHIP BY TRACT  
(EAST HALF SPACING UNIT)  
PREPARED BY THOMAS SLOAN 3/8/2024**

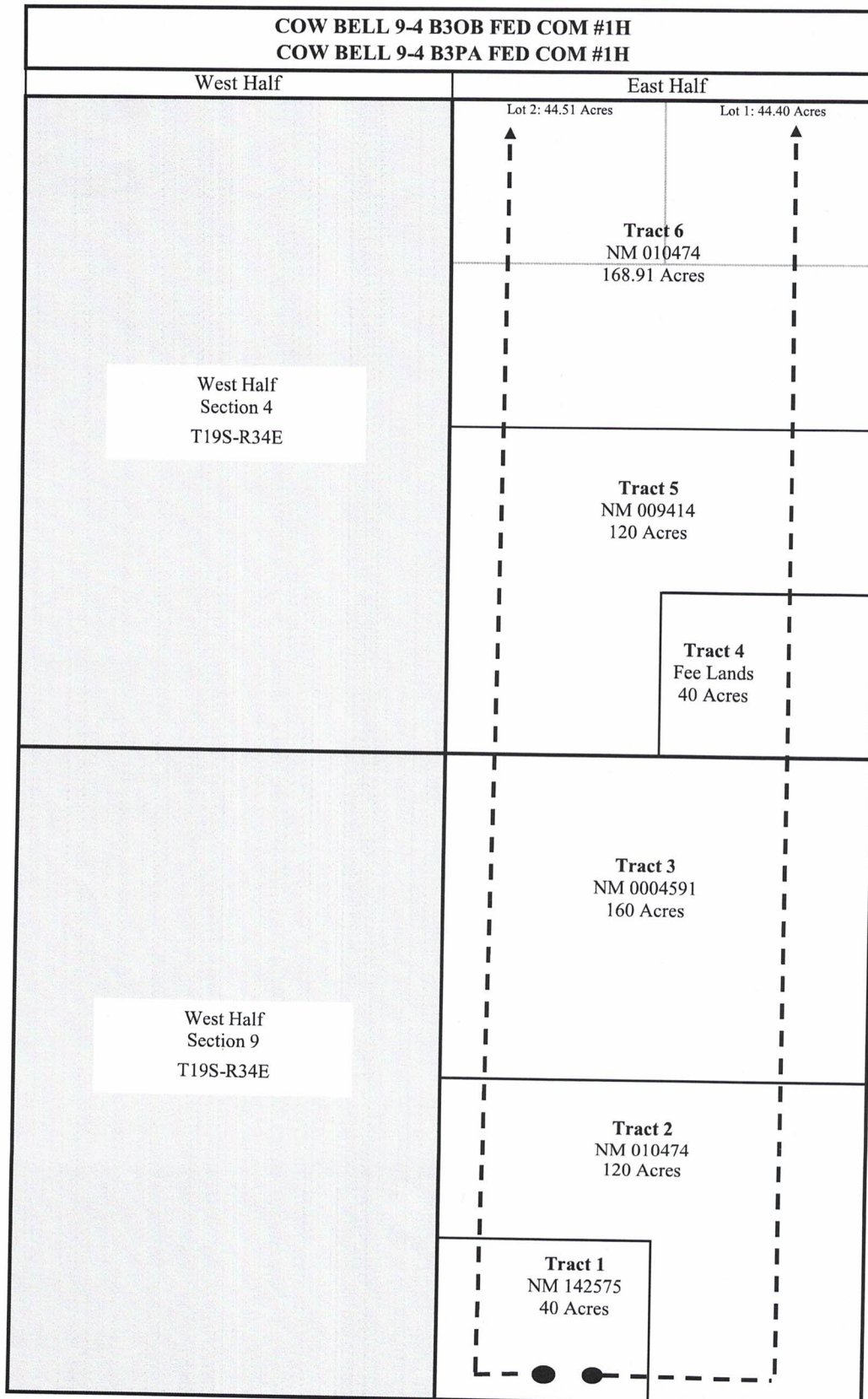


EXHIBIT 2-B

Tract 1 NM 142575	Tract 2 NM 010474	Tract 3 NM 0004591	Tract 4 Fee Lands	Tract 5 NM 009414	Tract 6 NM 010474	Unit Total
40.00	120.00	160.00	40.00	120.00	168.91	648.91
6.164183%	18.492549%	24.656732%	6.164183%	18.492549%	26.029804%	100.000000%
E/2 Section 9			E/2 Section 4			

**COW BELL 9-4 B3OB FED COM #1H & COW BELL 9-4 B3PA FED COM #1H  
East Half Unit Ownership**

Tract No.	Party	Net Acres	% of Tract	% of Spacing unit
1	Mewbourne Oil Company, et al	20.0000000	50.000000%	3.082092%
	David J. Disiere, et ux Teresa E. Disiere	20.0000000	50.000000%	3.082092%
	<b>Total Tract 1</b>	<b>40.0000000</b>	<b>50.000000%</b>	<b>6.164183%</b>

Tract No.	Party	Net Acres	% of Tract	% of Spacing unit
2	Mewbourne Oil Company, et al	120.0000000	100.000000%	18.492549%
	<b>Total Tract 2</b>	<b>120.0000000</b>	<b>100.000000%</b>	<b>18.492549%</b>

Tract No.	Party	Net Acres	% of Tract	% of Spacing unit
3	Mewbourne Oil Company, et al	160.0000000	100.000000%	24.656732%
	<b>Total Tract 3</b>	<b>160.0000000</b>	<b>100.000000%</b>	<b>24.656732%</b>

Tract No.	Party	Net Acres	% of Tract	% of Spacing unit
4	Mewbourne Oil Company, et al	37.1666667	92.916667%	5.727553%
	Bradford Ace Christmas	1.1666667	2.916667%	0.179789%
	OLLI Operating, LLC	0.6666667	1.666667%	0.102736%
	The Estate of John Richard Anderson, Deceased	0.5000000	1.250000%	0.077052%
	The Michelle M. Wiley Dynasty Trust, u/t/a dated August 21, 1997	0.2500000	0.625000%	0.038526%
	Sarah Anderson Harold	0.2500000	0.625000%	0.038526%
	<b>Total Tract 4</b>	<b>40.0000000</b>	<b>100.000000%</b>	<b>6.164183%</b>

Tract No.	Party	Net Acres	% of Tract	% of Spacing unit
5	Mewbourne Oil Company, et al	120.0000000	100.000000%	18.492549%
	<b>Total Tract 5</b>	<b>120.0000000</b>	<b>100.000000%</b>	<b>18.492549%</b>

Tract No.	Party	Net Acres	% of Tract	% of Spacing unit
6	Mewbourne Oil Company, et al	168.9100000	100.000000%	26.029804%
	<b>Total Tract 6</b>	<b>168.9100000</b>	<b>100.000000%</b>	<b>26.029804%</b>

<b>Total Spacing Unit</b>	<b>648.9100000</b>		<b>100.000000%</b>
---------------------------	--------------------	--	--------------------

\*\* PARTIES HIGHLIGHTED IN RED ARE PARTIES TO BE POOLED \*\*



**COWBELL 9/4 POOLING PLAT AND  
RECORD TITLE OWNERSHIP BY TRACT  
(EAST HALF SPACING UNIT)  
PREPARED BY THOMAS SLOAN 3/8/2024**

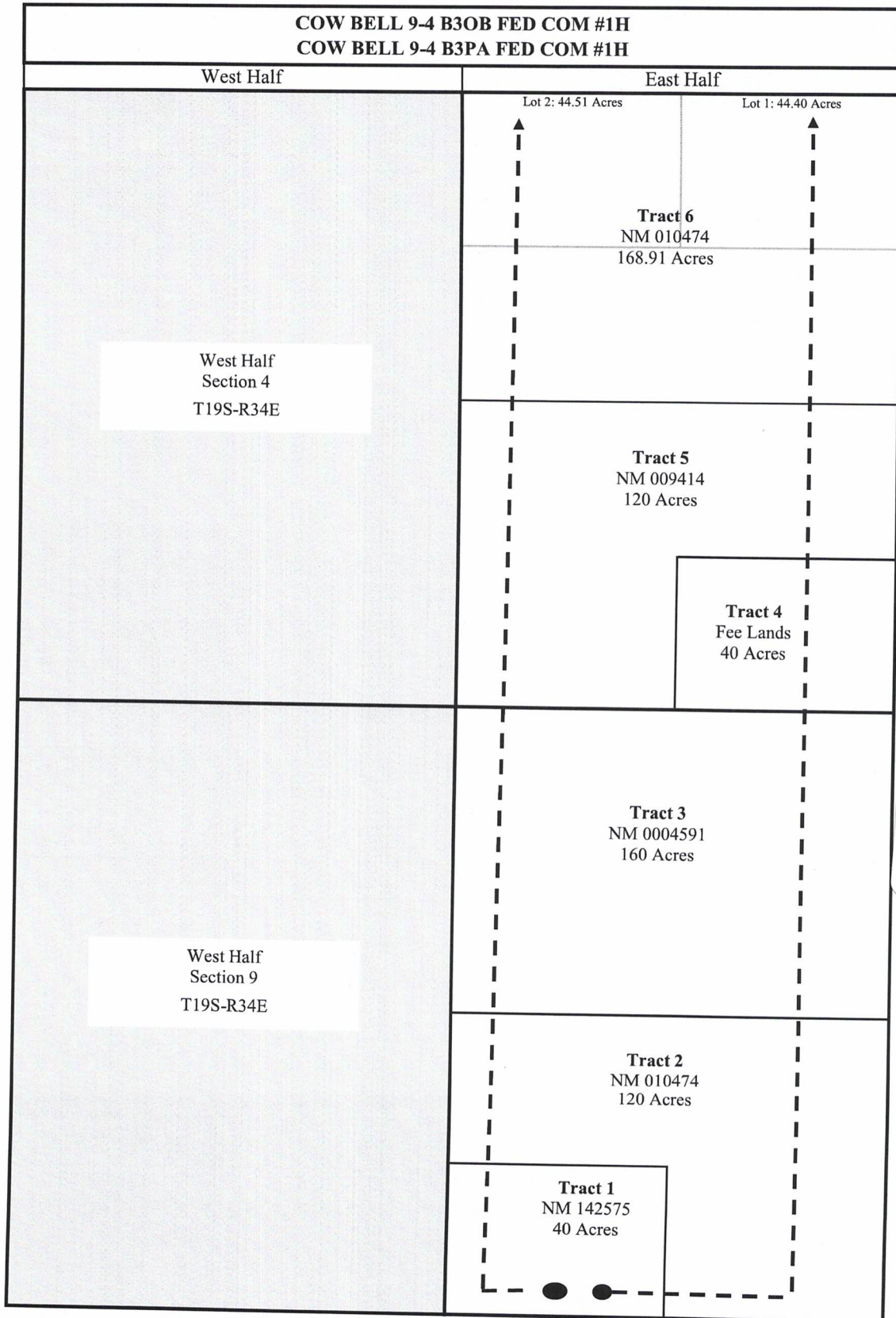


EXHIBIT 2-C

Tract 1 NM 142575	Tract 2 NM 010474	Tract 3 NM 0004591	Tract 4 Fee Lands	Tract 5 NM 009414	Tract 6 NM 010474	Unit Total
40.00	120.00	160.00	40.00	120.00	168.91	648.91
6.164183%	18.492549%	24.656732%	6.164183%	18.492549%	26.029804%	100.000000%
E/2 Section 9			E/2 Section 4			

**COW BELL 9-4 B3OB FED COM #1H & COW BELL 9-4 B3PA FED COM #1H**  
**East Half Unit Record Title Ownership**

Tract No.	Record Title Party	% of Tract	% of Spacing unit
1	David J. Disiere, et ux Teresa E. Disiere	100.000000%	6.164183%
	<b>Total Tract 1</b>		<b>6.164183%</b>

Tract No.	Record Title Party	% of Tract	% of Spacing unit
2	Magnum Hunter Production Inc.	50.000000%	9.246275%
	Apache Corp	50.000000%	9.246275%
	<b>Total Tract 2</b>	<b>50.000000%</b>	<b>18.492549%</b>

Tract No.	Record Title Party	% of Tract	% of Spacing unit
3	Seely Oil Co	100.000000%	24.656732%
	<b>Total Tract 3</b>	<b>100.000000%</b>	<b>24.656732%</b>

Tract No.	Record Title Party	% of Tract	% of Spacing unit
4	Mewbourne Oil Company, et al	92.916667%	5.727553%
	Bradford Ace Christmas	2.916667%	0.179789%
	OLLI Operating, LLC	1.666667%	0.102736%
	The Estate of John Richard Anderson, Deceased	1.250000%	0.077052%
	The Michelle M. Wiley Dynasty Trust, u/t/a dated August 21, 1997	0.625000%	0.038526%
	Sarah Anderson Harold	0.625000%	0.038526%
	<b>Total Tract 4</b>	<b>100.000000%</b>	<b>6.164183%</b>

Tract No.	Record Title Party	% of Tract	% of Spacing unit
5	Magnum Hunter Production Inc.	100.000000%	18.492549%
	<b>Total Tract 5</b>	<b>100.000000%</b>	<b>18.492549%</b>

Tract No.	Record Title Party	% of Tract	% of Spacing unit
6	Mewbourne Oil Company, et al	50.000000%	13.014902%
	Mark Shidler Inc	50.000000%	13.014902%
	<b>Total Tract 6</b>	<b>50.000000%</b>	<b>26.029804%</b>

<b>Total Spacing Unit</b>	<b>100.000000%</b>
---------------------------	--------------------

**\*\* PARTIES HIGHLIGHTED IN RED ARE PARTIES TO BE POOLED \*\***



**COW BELL 9-4 POOLING NOTICE LIST**

Prepared by Thomas Sloan

March 8, 2024

**Working Interest Owners:**

Bradford Ace Christmas

P.O. Box 173

Wagon Mound New Mexico 87752-0173

OLLI Operating, LLC

2540 King Arthur Boulevard, Suite 209K

Louisville Texas 75056

David J. Disiere, et ux Teresa E. Disiere

1224 Wyndham Hill Ln.

Southlake Texas 76092

**Unleased Mineral Interest Owners:**

John Richard Anderson(The Estate of John Richard Anderson, Deceased)

P.O. Box 136

GailTexas79738-0136

The Michelle M. Wiley Dynasty Trust, u/t/a dated August 21, 1997

6608 Ocaso Dr.,

Castle Pines,CO 80108-8138

Sarah Anderson Harold

2017 Canyon Dr.,

Cheyenne,Wyoming82009

EXHIBIT

2.D

**Record Title Owners:**

MARK SHIDLER INC

1313 CAMPBELL RD, STE D

HOUSTON, TX 77055

APACHE CORP

2000 POST OAK BLVD, STE 100

HOUSTON TX 77056

SEELY OIL CO

815 W 10TH ST

FORT WORTH TX 76102



**Summary of Communications**  
**COW BELL 9-4 B3OB FED COM #1H**  
**COW BELL 9-4 B3PA FED COM #1H**

**David J. Disiere, et ux Teresa E. Disiere**

**(Working Interest Owner)**

1. October 21, 2022 – Mewbourne Oil Company Landman Tyler Jolly sent Well proposal letter, AFEs, and Operating Agreement via certified mail. Proof of delivery attached.
2. February 20, 2024 – Followed up with a phone call to discuss.

**Bradford Ace Christmas**

**(Working Interest Owner)**

1. August 11, 2022 – Mewbourne Oil Company Landman Thomas Sloan sent Offer letter for an Oil and Gas Lease via Certified Mail. Proof of delivery attached.
2. October 21, 2022 - Mewbourne Oil Company Landman Tyler Jolly sent Well proposal letter, AFEs, and Operating Agreement via certified mail. Proof of delivery attached.
3. March 5, 2024 – Followed up with a phone call to discuss.

**OLLI Operating, LLC**

**(Working Interest Owner)**

1. August 11, 2022 – Mewbourne Oil Company Landman Thomas Sloan sent Offer letter for an Oil and Gas Lease via Email. Email and Offer Letter attached.
2. October 21, 2022 - Mewbourne Oil Company Landman Tyler Jolly sent Well proposal letter, AFEs, and Operating Agreement via certified mail. Proof of delivery attached.
3. February 20, 2024 – Followed up with a phone call to discuss, Party did not answer, Left Voicemail.
4. February 27, 2024 – Followed up with a phone call to discuss, Party did not answer, Left Voicemail.

**John Richard Anderson (The Estate of John Richard Anderson, Deceased)**

**(Unleased Mineral Interest Owner)**

1. August 11, 2022 Mewbourne Oil Company Landman Thomas Sloan sent Offer letter for an Oil and Gas Lease via Certified Mail. Proof of delivery attached.
2. October 21, 2022 - Mewbourne Oil Company Landman Tyler Jolly sent Well proposal letter, AFEs, and Operating Agreement via certified mail. Proof of delivery attached.
3. February 20, 2024 – Followed up with a phone call to discuss.

**The Michelle M. Wiley Dynasty Trust, u/t/a dated August 21, 1997**

**(Unleased Mineral Interest Owner)**

1. August 11, 2022 – Mewbourne Oil Company Landman Thomas Sloan sent Offer letter for an Oil and Gas Lease via Certified Mail. Mailing was never claimed, return letter attached.

EXHIBIT 2-E

2. October 21, 2022 - Mewbourne Oil Company Landman Tyler Jolly sent Well proposal letter, AFEs, and Operating Agreement via certified mail. Proof of delivery attached.
3. December 27, 2022 – Landman Tyler Jolly located additional address and sent the same well proposal materials to new address. Proof of delivery attached.
4. February 27, 2024 – Followed up with a phone call to discuss.

**Sarah Anderson Harold****(Unleased Mineral Interest Owner)**

1. August 11, 2022 – Mewbourne Oil Company Landman Thomas Sloan sent Offer letter for an Oil and Gas Lease via Certified Mail. Proof of delivery attached.
2. October 21, 2022 - Mewbourne Oil Company Landman Tyler Jolly sent Well proposal letter, AFEs, and Operating Agreement via certified mail. Proof of delivery attached.
3. Second Offer to Lease minerals sent via email. Email attached.
4. February 20, 2024 – Followed up with a phone call to discuss, party did not answer, left Voicemail.
5. March 5, 2024 – Followed up with a phone call to discuss, party did not answer, left Voicemail.

**Mark Shidler Inc.****(Bare Record Title Interest Owner in NMNM 010474)**

1. February 29, 2024 - Sent Communitization Agreement Via overnight mail. Proof of delivery attached.
2. March 4, 2024 - Followed up with Phone Call to discuss Communitization Agreement.
3. March 4, 2024 - Followed up with email (attached) to discuss Communitization Agreement.

**Apache Corp****(Bare Record Title Interest Owner in NMNM 010474)**

1. February 29, 2024 - Sent Communitization Agreement Via overnight mail. Proof of delivery attached.
2. March 4, 2024 - Followed up with email (attached) to discuss Communitization Agreement.
3. March 12, 2024 - Followed up with Phone Call to discuss Communitization Agreement.

**Seely Oil Co****(Bare Record Title Interest Owner in NMNM 010474)**

1. February 29, 2024 - Sent Communitization Agreement via overnight mail. Proof of delivery attached.
2. March 4, 2024 - Followed up with email (attached) to discuss Communitization Agreement.
3. March 5, 2024 - Followed up with Phone Call to discuss Communitization Agreement, Party refuses to execute Communitization Agreement unless provided with a redacted Title Opinion.
4. March 8, 2024 - Followed up with email (attached) to providing further details of Record Title ownership (by providing a redacted Title Opinion) to David Henderson at Seely Oil Co.



## MEWBOURNE OIL COMPANY

500 West Texas, Suite 1020  
Midland, Texas 79701  
Phone (432) 682-3715

October 21, 2022

Certified Mail

David J. Disiere  
1224 Wyndham Hill Ln.,  
Southlake, Texas 76092

Re: Cow Bell 9/4 Working Interest Unit  
and Well Proposals  
Sections 9 and 4, T19S, R34E  
Lea County, New Mexico

Ladies and Gentlemen:

Mewbourne Oil Company ("MOC"), as Operator, hereby proposes creating a two (2) section working interest unit comprising of Section 9 and Section 4, T19S, R34E, Lea County, New Mexico. As part of the initial development of this unit, MOC hereby proposes the following wells targeting the 3<sup>rd</sup> Bone Spring Sand interval within the Bone Spring formation:

- 1) Cow Bell 9/4 B3MD Fed Com #1H – API #pending  
Surface Location: 205' FSL, 1450' FWL, Section 9, T19S, R34E  
Bottom Hole Location: 100' FNL, 330' FWL, Section 4, T19S, R34E  
Proposed Total Vertical Depth: 10,810'  
Proposed Total Measured Depth: 21,050'  
Target: 3<sup>rd</sup> Bone Spring Sand  
Spacing Unit: W2W2 of Section 9 and W2SW4, SW4NW4, and Lot 4 (NW4NW4) of Section 4, T19S, R34E, Lea County, New Mexico
- 2) Cow Bell 9/4 B3NC Fed Com #1H – API #pending  
Surface Location: 205' FSL, 1480' FWL, Section 9, T19S, R34E  
Bottom Hole Location: 100' FNL, 1800' FWL, Section 4, T19S, R34E  
Proposed Total Vertical Depth: 10,740'  
Proposed Total Measured Depth: 20,920'  
Target: 3<sup>rd</sup> Bone Spring Sand  
Spacing Unit: E2W2 of Section 9 and E2SW4, SE4NW4, and Lot 3 (NW4NW4) of Section 4, T19S, R34E, Lea County, New Mexico

- 3) Cow Bell 9/4 B3OB Fed Com #1H – API #pending  
Surface Location: 205' FSL, 1550' FEL, Section 9, T19S, R34E  
Bottom Hole Location: 100' FNL, 2050' FEL, Section 4, T19S, R34E  
Proposed Total Vertical Depth: 10,750'  
Proposed Total Measured Depth: 20,930'  
Target: 3<sup>rd</sup> Bone Spring Sand  
Spacing Unit: W2E2 of Section 9 and W2SE4, SW4NE4, and Lot 2 (NW4NE4)  
of Section 4, T19S, R34E, Lea County, New Mexico
- 4) Cow Bell 9/4 B3PA Fed Com #1H – API #pending  
Surface Location: 205' FSL, 1580' FEL, Section 9, T19S, R34E  
Bottom Hole Location: 100' FNL, 660' FEL, Section 4, T19S, R34E  
Proposed Total Vertical Depth: 10,750'  
Proposed Total Measured Depth: 20,950'  
Target: 3<sup>rd</sup> Bone Spring Sand  
Spacing Unit: E2E2 of Section 9 and E2SE4, SE4NE4, and Lot 1 (NE4NE4)  
of Section 4, T19S, R34E, Lea County, New Mexico

The wells are planned to be pad drilled with the first well tentatively planned to spud in 2<sup>nd</sup> quarter 2023. In the event you elect to participate in the proposed wells, please execute the enclosed set of Operating Agreement signature and acknowledgement pages and AFEs before returning them to the undersigned within thirty (30) days. The enclosed Operating Agreement provides a non-consent penalty of 300%/100% and COPAS drilling/producing rates of \$10,000/month and \$1,000/month respectively. A final Exhibit A will be provided after all elections are made. Please enclose your most current well information requirements with your executed AFEs so that we may supply well data when available.

Please contact me at (432) 682-3715 or [tjolly@mewbourne.com](mailto:tjolly@mewbourne.com) if you have any questions or need additional information.

Very truly yours,

**MEWBOURNE OIL COMPANY**



Tyler Jolly  
Landman



## AUTHORIZATION FOR EXPENDITURE

Well Name: COW BELL 9/4 B3OB FED COM #1H		Prospect: COW BELL	
Location: SL: 205 FSL & 1550 FEL (9); BHL: 100 FNL & 2050 FEL (4)		County: LEA ST: NM	
Sec: 9	Blk:	Survey:	TWP: 19S RNG: 34E Prop. TVD: 10750 TMD: 20930

INTANGIBLE COSTS 0180		CODE	TCP	CODE	CC
Regulatory Permits & Surveys		0180-0100	\$20,000	0180-0200	
Location / Road / Site / Preparation		0180-0105	\$50,000	0180-0205	\$35,000
Location / Restoration		0180-0106	\$200,000	0180-0206	\$35,000
Daywork / Turnkey / Footage Drilling	23 days drlg / 3 days comp @ \$26,000/d	0180-0110	\$638,700	0180-0210	\$83,300
Fuel	1700 gal/day @ \$4.30/gal	0180-0114	\$179,600	0180-0214	\$317,300
Alternate Fuels		0180-0115		0180-0215	\$96,500
Mud, Chemical & Additives		0180-0120	\$40,000	0180-0220	
Mud - Specialized		0180-0121	\$150,000	0180-0221	
Horizontal Drillout Services				0180-0222	\$200,000
Stimulation Toe Preparation				0180-0223	\$40,000
Cementing		0180-0125	\$180,000	0180-0225	\$50,000
Logging & Wireline Services		0180-0130	\$2,300	0180-0230	\$357,200
Casing / Tubing / Snubbing Service		0180-0134	\$30,000	0180-0234	\$15,000
Mud Logging		0180-0137	\$35,000		
Stimulation	49 Stg 19.5 MMgal & 19.6 MMlbs			0180-0241	\$2,700,000
Stimulation Rentals & Other				0180-0242	\$285,000
Water & Other		0180-0145	\$35,000	0180-0245	\$598,100
Bits		0180-0148	\$93,700	0180-0248	\$5,000
Inspection & Repair Services		0180-0150	\$50,000	0180-0250	\$5,000
Misc. Air & Pumping Services		0180-0154		0180-0254	\$10,000
Testing & Flowback Services		0180-0158	\$12,000	0180-0258	\$24,000
Completion / Workover Rig				0180-0260	\$10,500
Rig Mobilization		0180-0164	\$120,000		
Transportation		0180-0165	\$30,000	0180-0265	\$12,500
Welding, Construction, & Maint. Services		0180-0168	\$4,000	0180-0268	\$15,000
Contract Services & Supervision		0180-0170	\$124,900	0180-0270	\$51,300
Directional Services	Includes vertical control	0180-0175	\$341,800		
Equipment Rental		0180-0180	\$166,600	0180-0280	\$20,800
Well / Lease Legal		0180-0184	\$5,000	0180-0284	
Well / Lease Insurance		0180-0185	\$5,300	0180-0285	
Intangible Supplies		0180-0188	\$8,000	0180-0288	\$1,000
Damages		0180-0190	\$30,000	0180-0290	\$10,000
Pipeline Interconnect & ROW Easements		0180-0192		0180-0292	\$10,000
Company Supervision		0180-0195	\$115,200	0180-0295	\$28,800
Overhead Fixed Rate		0180-0196	\$10,000	0180-0296	\$20,000
Contingencies	5% (TCP) 5% (CC)	0180-0199	\$133,900	0180-0299	\$251,800
TOTAL			\$2,811,000		\$5,288,100

TANGIBLE COSTS 0181		CODE	TCP	CODE	CC
Casing (19.1" - 30")		0181-0793			
Casing (10.1" - 19.0")	1810' - 13 3/8" 54.5# J-55 ST&C @ \$76.30/ft	0181-0794	\$147,500		
Casing (8.1" - 10.0")	3565' - 9 5/8" 40# HCL80 LT&C @ \$60.83/ft	0181-0795	\$231,600		
Casing (6.1" - 8.0")	11020' - 7" 29# HPP110 BT&C @ \$51.98/ft	0181-0796	\$611,800		
Casing (4.1" - 6.0")	10070' - 4 1/2" 13.5# HCP-110 CDC-HTQ @ \$29.38/ft			0181-0797	\$316,000
Tubing	10175' - 2 7/8" 6.5# L-80 IPC Tbg @ \$13.00/ft			0181-0798	\$141,300
Drilling Head		0181-0860	\$35,000		
Tubing Head & Upper Section				0181-0870	\$30,000
Horizontal Completion Tools	Completion liner hanger			0181-0871	\$50,000
Subsurface Equip. & Artificial Lift	Packer			0181-0880	\$25,000
Pumping Unit Systems				0181-0885	
Service Pumps	TP/CP/circ. pump			0181-0886	\$16,000
Storage Tanks	(1/2) 6 - 750 bbl/5 - 750 bbl coated/1 - GB			0181-0890	\$253,000
Emissions Control Equipment	(1/2) VRT/VRU/FIare/KO			0181-0892	\$153,300
Separation / Treating Equipment	(1/2) Hz. Sep./Vt. Sep./Hz. HT/Vt. HT			0181-0895	\$88,600
Automation / Metering Equipment	Automation/fiber/meters			0181-0898	\$89,300
Line Pipe & Valves - Gathering	Facility gas work & GL injection			0181-0900	\$25,000
Fittings / Valves & Accessories	Flowline/parts			0181-0906	\$202,600
Cathodic Protection				0181-0908	
Electrical Installation				0181-0909	\$125,000
Equipment Installation				0181-0910	\$185,000
Pipeline Construction	Facility gas work & GL injection			0181-0920	\$25,000
TOTAL			\$1,025,900		\$1,725,100
SUBTOTAL			\$3,836,900		\$7,013,200
TOTAL WELL COST					\$10,850,100

Extra Expense Insurance

☐ I elect to be covered by Operator's Extra Expense Insurance and pay my proportionate share of the premium.  
Operator has secured Extra Expense Insurance covering costs of well control, clean up and redrilling as estimated in Line Item 0180-0185.

☐ I elect to purchase my own well control insurance policy.

If neither box is checked above, non-operating working interest owner elects to be covered by Operator's well control insurance.

Prepared by: H. Buckley Date: 10/19/2022

Company Approval: Date:

Joint Owner Interest: Amount:

Joint Owner Name: Signature:

EXHIBIT

2.F



## MEWBOURNE OIL COMPANY

## AUTHORIZATION FOR EXPENDITURE

Well Name: COW BELL 9/4 B3PA FED COM #1H		Prospect: COW BELL	
Location: SL: 205 FSL & 1580 FEL (9); BHL: 100 FNL & 660 FEL (4)		County: LEA	ST: NM
Sec: 9	Blk:	Survey:	TWP: 19S RNG: 34E Prop. TVD: 10750 TMD: 20950

INTANGIBLE COSTS 0180		CODE	TCP	CODE	CC
Regulatory Permits & Surveys		0180-0100	\$20,000	0180-0200	
Location / Road / Site / Preparation		0180-0105	\$50,000	0180-0205	\$35,000
Location / Restoration		0180-0106	\$200,000	0180-0206	\$35,000
Daywork / Turnkey / Footage Drilling 23 days drlg / 3 days comp @ \$26,000/d		0180-0110	\$638,700	0180-0210	\$83,300
Fuel 1700 gal/day @ \$4.30/gal		0180-0114	\$179,600	0180-0214	\$317,300
Alternate Fuels		0180-0115		0180-0215	\$96,500
Mud, Chemical & Additives		0180-0120	\$40,000	0180-0220	
Mud - Specialized		0180-0121	\$150,000	0180-0221	
Horizontal Drillout Services				0180-0222	\$200,000
Stimulation Toe Preparation				0180-0223	\$40,000
Cementing		0180-0125	\$180,000	0180-0225	\$50,000
Logging & Wireline Services		0180-0130	\$2,300	0180-0230	\$357,200
Casing / Tubing / Snubbing Service		0180-0134	\$30,000	0180-0234	\$15,000
Mud Logging		0180-0137	\$35,000		
Stimulation 49 Stg 19.6 MMgal & 19.6 MMlbs				0180-0241	\$2,700,000
Stimulation Rentals & Other				0180-0242	\$285,000
Water & Other		0180-0145	\$35,000	0180-0245	\$598,100
Bits		0180-0148	\$93,700	0180-0248	\$5,000
Inspection & Repair Services		0180-0150	\$50,000	0180-0250	\$5,000
Misc. Air & Pumping Services		0180-0154		0180-0254	\$10,000
Testing & Flowback Services		0180-0158	\$12,000	0180-0258	\$24,000
Completion / Workover Rig				0180-0260	\$10,500
Rig Mobilization		0180-0164	\$120,000		
Transportation		0180-0165	\$30,000	0180-0265	\$12,500
Welding, Construction, & Maint. Services		0180-0168	\$4,000	0180-0268	\$15,000
Contract Services & Supervision		0180-0170	\$124,900	0180-0270	\$51,300
Directional Services Includes vertical control		0180-0175	\$341,800		
Equipment Rental		0180-0180	\$166,600	0180-0280	\$20,800
Well / Lease Legal		0180-0184	\$5,000	0180-0284	
Well / Lease Insurance		0180-0185	\$5,300	0180-0285	
Intangible Supplies		0180-0188	\$8,000	0180-0288	\$1,000
Damages		0180-0190	\$30,000	0180-0290	\$10,000
Pipeline Interconnect & ROW Easements		0180-0192		0180-0292	\$10,000
Company Supervision		0180-0195	\$115,200	0180-0295	\$28,800
Overhead Fixed Rate		0180-0196	\$10,000	0180-0296	\$20,000
Contingencies 5% (TCP) 5% (CC)		0180-0199	\$133,900	0180-0299	\$251,800
TOTAL			\$2,811,000		\$5,288,100

TANGIBLE COSTS 0181		CODE	TCP	CODE	CC
Casing (19.1" - 30")		0181-0793			
Casing (10.1" - 19.0") 1810' - 13 3/8" 54.5# J-55 ST&C @ \$76.30/ft		0181-0794	\$147,500		
Casing (8.1" - 10.0") 3565' - 9 5/8" 40# HCL80 LT&C @ \$60.83/ft		0181-0795	\$231,600		
Casing (6.1" - 8.0") 11020' - 7" 29# HPP110 BT&C @ \$51.98/ft		0181-0796	\$611,800		
Casing (4.1" - 6.0") 10070' - 4 1/2" 13.5# HCP-110 CDC-HTQ @ \$29.38/ft				0181-0797	\$316,000
Tubing 10175' - 2 7/8" 6.5# L-80 IPC Tbg @ \$13.00/ft				0181-0798	\$141,300
Drilling Head		0181-0860	\$35,000		
Tubing Head & Upper Section				0181-0870	\$30,000
Horizontal Completion Tools Completion liner hanger				0181-0871	\$50,000
Subsurface Equip. & Artificial Lift Packer				0181-0880	\$25,000
Pumping Unit Systems				0181-0885	
Service Pumps TP/CP/circ. pump				0181-0886	\$16,000
Storage Tanks (1/2) 6 - 750 bbl/5 - 750 bbl coated/1 - GB				0181-0890	\$253,000
Emissions Control Equipment (1/2) VRT/VRU/Flare/KO				0181-0892	\$153,300
Separation / Treating Equipment (1/2) Hz. Sep./Vt. Sep./Hz. HT/Vt. HT				0181-0895	\$88,600
Automation / Metering Equipment Automation/fiber/meters				0181-0898	\$89,300
Line Pipe & Valves - Gathering Facility gas work & GL injection				0181-0900	\$25,000
Fittings / Valves & Accessories Flowline/parts				0181-0906	\$202,600
Cathodic Protection				0181-0908	
Electrical Installation				0181-0909	\$125,000
Equipment Installation				0181-0910	\$185,000
Pipeline Construction Facility gas work & GL injection				0181-0920	\$25,000
TOTAL			\$1,025,900		\$1,725,100
SUBTOTAL			\$3,836,900		\$7,013,200
TOTAL WELL COST					\$10,850,100

Extra Expense Insurance

☐ I elect to be covered by Operator's Extra Expense Insurance and pay my proportionate share of the premium.  
Operator has secured Extra Expense Insurance covering costs of well control, clean up and redrilling as estimated in Line Item 0180-0185.

☐ I elect to purchase my own well control insurance policy.

If neither box is checked above, non-operating working interest owner elects to be covered by Operator's well control insurance.

Prepared by: H. Buckley Date: 10/19/2022

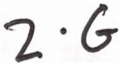
Company Approval: Date:

Joint Owner Interest: Amount:

Joint Owner Name: Signature:



**EAST HALF OF SECTIONS 9 & 4, T19S, R34E, LEA COUNTY, NM**



TRACT	LEASHOLD/WORKING INTEREST/OPERATORS OF OFFSET TRACTS
1	AMTEX ENERGY INC; XTO Delaware Basin, LLC (RICHARDSON & BASS INC)
2	CHEVRON U.S.A. INC.
3	COTERRA ENERGY
4	PRIMA EXPLORATION, INC
5	MATADOR PRODUCTION COMPANY/MRC DELAWARE RESOURCES, LLC
6	MEWBOURNE OIL COMPANY
7	CONOCOPHILLIPS

ADDRESSES OF PARTIES
<b>AMTEX ENERGY INC</b> 214 West Texas Avenue, Suite 302, Midland, Texas 79701
<b>XTO Delaware Basin, LLC (RICHARDSON &amp; BASS INC)</b> 22777 Springwoods Village Parkway, Spring, Texas 77389
<b>COTERRA ENERGY (MAGNUM HUNTER PRODUCTION, INC.)</b> 6001 Deauville Blvd, Suite 300N Midland, TX 79706
<b>MATADOR PRODUCTION COMPANY/MRC DELAWARE RESOURCES, LLC</b> 5400 LBJ Parkway, Suite 1500 Dallas TX 75240
<b>CONOCOPHILLIPS</b> 600 W. Illinois Ave., Midland, TX 79701
<b>CHEVRON U.S.A. INC.</b> 1400 Smith Street Houston, TX 77002 HOU140/45130
<b>MEWBOURNE OIL COMPANY</b> N/A
<b>PRIMA EXPLORATION, INC</b> 250 Fillmore Street, Ste. 500 Denver, CO 80206