



February 26, 2026

Certified Tracking #: 9214 8969 0099 9790 1854 0199 17

Attn: Kyle Paradis
Bureau of Land Management
301 Dinosaur Trail
Santa Fe, NM 87508

Attn: Commissioner of Public Lands
New Mexico State Land Office
P.O Box 1148
Santa Fe, NM 87504

New Mexico Oil Conservation Division
1220 S. Saint Francis Drive
Santa Fe, NM 87505

Re: 2026 Plan of Development
Canyon Largo Unit (NMNM078383X)
Rio Arriba County, New Mexico

Ladies & Gentleman:

Hilcorp Energy Company, as Operator, hereby tenders the enclosed 2026 Plan of Development ("POD") and 2025 summary/review of operations for your review along with accompanying well status lists and participating area production graphs.

In accordance with the subject Unit Agreement, please signify your approval and/or consent by executing and returning a copy of the attached approval page to the undersigned.

If you have any questions or concerns regarding this matter, please do not hesitate to contact me at the email or number provided in the footer below.

Sincerely,

A handwritten signature in blue ink that reads 'Gatewood D. Brown'.

Gatewood D. Brown
Senior Landman – New Mexico

1111 Travis Street, Houston, TX 77002
Phone: (713) 289-2767 gabrown@hilcorp.com



**Canyon Largo Unit (NMNM078383X)
2026 PLAN OF DEVELOPMENT APPROVALS**

Bureau of Land Management

Date

New Mexico Oil Conservation Division

Date

New Mexico Commissioner of Public Lands

Date

1111 Travis Street, Houston, TX 77002
Phone: (713) 289-2767 gabrown@hilcorp.com

**2026 PLAN OF DEVELOPMENT
CANYON LARGO UNIT
NMNM-078383X
RIO ARRIBA COUNTY, NEW MEXICO**

Previous Year Operations:

Drilling: Hilcorp Energy Company (“Hilcorp”) did not drill any new wells in 2025.

Recompletions: Hilcorp did not recomplete any wells in 2025:

Plug Back: Hilcorp did not plug back any wells in 2025.

Conversions: Hilcorp did not convert any wells in 2025.

Plug & Abandonment: Hilcorp plugged & abandoned the following wells in 2025:

Well Name	API	Section	Township	Range	Current Zone
CANYON LARGO UNIT 304	3003922687	11	24N	05W	GP
CANYON LARGO UNIT 022	3003905469	15	24N	06W	PC
CANYON LARGO UNIT 331	3003923325	6	24N	05W	GP
CANYON LARGO UNIT 341	3003923403	2	24N	07W	GP

Participating Areas

Paying Well Determination: Hilcorp did not submit any well for paying determination in 2025.

PA Application Submitted or Approved: Hilcorp did not submit a PA Application in 2025.

Surface Disturbing Activities: Hilcorp did not create any new surface disturbances in 2025.

Water

Use: Hilcorp did not have any recomplete projects in 2025.

Fresh Water:

Drilling: N/A

Completion: N/A

Fresh Water Storage:

Drilling: N/A

Completion: N/A

Water Transfer:

Drilling: N/A

Completion: N/A

Produced Water:

Drilling: N/A

Completion: N/A

Disposal:

SWD Well Name	API Number	Legal Description
N/A	N/A	N/A

2025 Water Disposal Data

Facility	Total (BBL)	Daily Avg (BPD)	Mode of Transport (Piped, Trucked, Both)
N/A	N/A	N/A	N/A

Planned Year Operations:

Drilling: Hilcorp plans to drill two wells in the Canyon Largo Unit during 2026.

Well Name	API	Section	Township	Range	Current Zone
Canyon Largo Unit 2407-03F #004H		4	24N	07W	MC
Canyon Largo Unit 2407-03F #001H		4	24N	07W	MC

Recompletions: Hilcorp does not anticipate any recomplete projects in 2026:

Sidetrack/Reentry: Hilcorp does not anticipate any sidetrack/reentry projects in the Canyon Largo Unit during 2026.

Plug Back Program: Hilcorp does not anticipate any plug-back projects in the Canyon Largo Unit during 2026.

Conversion Program: Hilcorp does not anticipate any conversion projects in the Canyon Largo Unit during 2026.

Plugging & Abandonment Program: Hilcorp anticipates plugging & abandoning the following wells in the Canyon Largo Unit during 2026.

Well Name	API	Section	Township	Range	Current Zone
CANYON LARGO UNIT 501	3003930811	28	25N	07W	DK
CANYON LARGO UNIT 052	3003905970	13	25N	07W	PC

Participating Areas

Paying Well Determination Planned: Hilcorp does not anticipate submitting any paying well determinations in 2026.

PA Application Planned: Hilcorp does not anticipate submitting any PA applications in 2026.

Surface Disturbing Activities: Hilcorp does not anticipate submitting any additional surface disturbing activities in 2026.

Water Use: Hilcorp plans to drill two wells in 2026.

Fresh Water

Drilling: N/A

Completion: Hilcorp anticipates using approximately 250,000 barrels for the two new drills in 2026.

Fresh Water Storage

Drilling: N/A

Completion: N/A

Water Transfer:

N/A

Disposal:

2026 Water Disposal Estimate (based on 2025)

Facility	Total (BBL)	Daily Avg (BPD)	Mode of Transport (Piped, Trucked, Both)
N/A	N/A	N/A	N/A

**HILCORP ENERGY COMPANY – OPERATOR
EXHIBIT A
WELLS ASSOCIATED WITH THE CANYON LARGO UNIT
RIO ARRIBA COUNTY, NEW MEXICO**

Well Name	Well No.	API	State Well Classification	Well Status	Reservoir	OCD Lease Type	Reporting Serial
CANYON LARGO UNIT	24	3003960041	Gas	PROD	PICTURED CLIFFS	State	PC PA - NMNM78383A
CANYON LARGO UNIT	95	3003905763	Gas	PROD	GALLUP	State	Lease Basis - E-291-66
CANYON LARGO UNIT	95	3003905763	Gas	PROD	DAKOTA	State	DK PA - NMNM78383D
CANYON LARGO UNIT	294	3003922308	Gas	PROD	DAKOTA	State	DK PA - NMNM78383D
CANYON LARGO UNIT	294	3003922308	Gas	PROD	MESAVERDE	State	MV PA - NMNM78383F
CANYON LARGO UNIT	166	3003921505	Gas	PROD	DAKOTA	State	DK PA - NMNM78383D
CANYON LARGO UNIT	166	3003921505	Gas	PROD	CHACRA	State	CH PA - NMNM78383B
CANYON LARGO UNIT	183	3003920527	Gas	PROD	CHACRA	State	CH PA - NMNM78383B
CANYON LARGO UNIT	183	3003920527	Gas	PROD	PICTURED CLIFFS	State	PC PA - NMNM78383A
CANYON LARGO UNIT	294N	3003930323	Gas	PROD	MESAVERDE	State	MV PA - NMNM78383F
CANYON LARGO UNIT	294N	3003930323	Gas	PROD	DAKOTA	State	DK PA - NMNM78383D
CANYON LARGO UNIT	294E	3003925714	Gas	PROD	DAKOTA	State	DK PA - NMNM78383D
CANYON LARGO UNIT	294E	3003925714	Gas	PROD	MESAVERDE	State	MV PA - NMNM78383F
CANYON LARGO UNIT	271	3003920980	Gas	PROD	PICTURED CLIFFS	State	PC PA - NMNM78383A
CANYON LARGO UNIT	321	3003923139	Gas	PROD	GALLUP	State	GL PA - NMNM78383C

Well Name	Well No.	API	State Well Classification	Well Status	Reservoir	OCD Lease Type	Reporting Serial
CANYON LARGO UNIT	327	3003923242	Gas	PROD	GALLUP	State	GL PA - NMNM78383C
CANYON LARGO UNIT	47	3003960044	Gas	PROD	PICTURED CLIFFS	State	PC PA - NMNM78383A
CANYON LARGO UNIT	139	3003908102	Gas	PROD	CHACRA	State	CH PA - NMNM78383B
CANYON LARGO UNIT	473	3003929579	Gas	PROD	DAKOTA	State	Lease Basis - NMNM112677
CANYON LARGO UNIT	458	3003929283	Gas	PROD	DAKOTA	State	Lease Basis - NMNM350511
CANYON LARGO UNIT	345	3003923656	Gas	PROD	GALLUP	State	GL PA - NMNM78383C
CANYON LARGO UNIT	20	3003905554	Gas	PROD	PICTURED CLIFFS	FEE	PC PA - NMNM78383A
CANYON LARGO UNIT	22	3003905469	Gas	PROD	PICTURED CLIFFS	FEE	PC PA - NMNM78383A
CANYON LARGO UNIT	480	3003930218	Gas	PROD	DAKOTA	Federal	Lease Basis - NMNM120967
CANYON LARGO UNIT	474	3003929680	Gas	PROD	UNK	Federal	N/A - Cancelled Permit
CANYON LARGO UNIT	108	3003905465	Gas	PROD	PICTURED CLIFFS	Federal	PC PA - NMNM78383A
CANYON LARGO UNIT	119	3003905491	Gas	PROD	GALLUP	Federal	GL PA - NMNM78383C
CANYON LARGO UNIT	21	3003960032	Gas	PROD	PICTURED CLIFFS	Federal	PC PA - NMNM78383A
CANYON LARGO UNIT	1	3003905631	Gas	PROD	PICTURED CLIFFS	Federal	PC PA - NMNM78383A
CANYON LARGO UNIT	117	3003905653	Gas	PROD	DAKOTA	Federal	DK PA - NMNM78383D
CANYON LARGO UNIT	117E	3003930253	Gas	PROD	DAKOTA	Federal	DK PA - NMNM78383D

Well Name	Well No.	API	State Well Classification	Well Status	Reservoir	OCD Lease Type	Reporting Serial
CANYON LARGO UNIT	120	3003905632	Gas	PROD	PICTURED CLIFFS	Federal	PC PA - NMNM78383A
CANYON LARGO UNIT	176	3003920541	Gas	PROD	PICTURED CLIFFS	Federal	PC PA - NMNM78383A
CANYON LARGO UNIT	19	3003905677	Gas	PROD	PICTURED CLIFFS	Federal	PC PA - NMNM78383A
CANYON LARGO UNIT	249	3003920908	Gas	PROD	DAKOTA	Federal	DK PA - NMNM78383D
CANYON LARGO UNIT	301	3003922451	Gas	PROD	GALLUP	Federal	GL PA - NMNM78383C
CANYON LARGO UNIT	302	3003922684	Gas	PROD	GALLUP	Federal	GL PA - NMNM78383C
CANYON LARGO UNIT	303	3003922685	Gas	PROD	GALLUP	Federal	GL PA - NMNM78383C
CANYON LARGO UNIT	308	3003923650	Gas	PROD	GALLUP	Federal	GL PA - NMNM78383C
CANYON LARGO UNIT	310	3003922889	Gas	PROD	GALLUP	Federal	GL PA - NMNM78383C
CANYON LARGO UNIT	311	3003922887	Gas	PROD	GALLUP	Federal	GL PA - NMNM78383C
CANYON LARGO UNIT	328	3003923266	Gas	PROD	GALLUP	Federal	GL PA - NMNM78383C
CANYON LARGO UNIT	331	3003923325	Gas	PROD	GALLUP	Federal	GL PA - NMNM78383C
CANYON LARGO UNIT	337	3003923399	Gas	PROD	GALLUP	Federal	GL PA - NMNM78383C
CANYON LARGO UNIT	338	3003923401	Gas	PROD	GALLUP	Federal	GL PA - NMNM78383C
CANYON LARGO UNIT	339	3003923400	Gas	PROD	GALLUP	Federal	GL PA - NMNM78383C
CANYON LARGO UNIT	135	3003905732	Gas	PROD	DAKOTA	Federal	DK PA - NMNM78383D
CANYON LARGO UNIT	175	3003920536	Gas	PROD	PICTURED CLIFFS	Federal	PC PA - NMNM78383A

Well Name	Well No.	API	State Well Classification	Well Status	Reservoir	OCD Lease Type	Reporting Serial
CANYON LARGO UNIT	326	3003923264	Gas	PROD	GALLUP	Federal	GL PA - NMNM78383C
CANYON LARGO UNIT	344	3003923387	Gas	PROD	MESAVERDE	Federal	GL PA - NMNM78383C
CANYON LARGO UNIT	344	3003923387	Gas	PROD	GALLUP	Federal	GL PA - NMNM78383C
CANYON LARGO UNIT	358	3003923877	Gas	PROD	GALLUP	Federal	GL PA - NMNM78383C
CANYON LARGO UNIT	393	3003925552	Gas	PROD	GALLUP	Federal	GL PA - NMNM78383C
CANYON LARGO UNIT	400	3003925750	Gas	PROD	DAKOTA	Federal	Lease Basis - NMSF078875
CANYON LARGO UNIT	43	3003905860	Gas	PROD	PICTURED CLIFFS	Federal	PC PA - NMNM78383A
CANYON LARGO UNIT	44	3003960043	Gas	PROD	PICTURED CLIFFS	Federal	PC PA - NMNM78383A
CANYON LARGO UNIT	45	3003905852	Gas	PROD	PICTURED CLIFFS	Federal	PC PA - NMNM78383A
CANYON LARGO UNIT	48	3003905759	Gas	PROD	PICTURED CLIFFS	Federal	PC PA - NMNM78383A
CANYON LARGO UNIT	492	3003930052	Gas	PROD	DAKOTA	Federal	Lease Basis - NMSF078875
CANYON LARGO UNIT	493	3003930038	Gas	PROD	DAKOTA	Federal	Lease Basis - NMSF078875
CANYON LARGO UNIT	494	3003930053	Gas	P&A	DAKOTA	Federal	Lease Basis - NMSF078875
CANYON LARGO UNIT	494	3003930053	Gas	P&A	GALLUP	Federal	GL PA - NMNM78383C
CANYON LARGO UNIT	506	3003931098	Gas	PROD	DAKOTA	Federal	Lease Basis - NMSF078875
CANYON LARGO UNIT	114	3003920540	Gas	PROD	PICTURED CLIFFS	Federal	PC PA - NMNM78383A

Well Name	Well No.	API	State Well Classification	Well Status	Reservoir	OCD Lease Type	Reporting Serial
CANYON LARGO UNIT	14	3003960049	Gas	PROD	PICTURED CLIFFS	Federal	PC PA - NMNM78383A
CANYON LARGO UNIT	196	3003920742	Gas	PROD	PICTURED CLIFFS	Federal	PC PA - NMNM78383A
CANYON LARGO UNIT	512	3003931177	Gas	EXPIRED	DAKOTA	Federal	Expired Permit
CANYON LARGO UNIT	126	3003905537	Gas	PROD	GALLUP	Federal	GL PA - NMNM78383C
CANYON LARGO UNIT	130R	3003923426	Gas	PROD	GALLUP	Federal	GL PA - NMNM78383C
CANYON LARGO UNIT	131R	3003923531	Gas	PROD	GALLUP	Federal	GL PA - NMNM78383C
CANYON LARGO UNIT	286E	3003929976	Gas	PROD	DAKOTA	Federal	DK PA - NMNM78383D
CANYON LARGO UNIT	291	3003921964	Gas	PROD	DAKOTA	Federal	DK PA - NMNM78383D
CANYON LARGO UNIT	3	3003905543	Gas	PROD	PICTURED CLIFFS	Federal	PC PA - NMNM78383A
CANYON LARGO UNIT	304	3003922687	Gas	PROD	GALLUP	Federal	GL PA - NMNM78383C
CANYON LARGO UNIT	305	3003922686	Gas	PROD	GALLUP	Federal	GL PA - NMNM78383C
CANYON LARGO UNIT	306	3003923083	Gas	PROD	GALLUP	Federal	GL PA - NMNM78383C
CANYON LARGO UNIT	307	3003923651	Gas	PROD	GALLUP	Federal	GL PA - NMNM78383C
CANYON LARGO UNIT	467	3003929382	Gas	PROD	DAKOTA	Federal	Lease Basis - NMSF078877
CANYON LARGO UNIT	71	3003905556	Gas	PROD	PICTURED CLIFFS	Federal	PC PA - NMNM78383A
CANYON LARGO UNIT	77	3003905581	Gas	PROD	PICTURED CLIFFS	Federal	PC PA - NMNM78383A

Well Name	Well No.	API	State Well Classification	Well Status	Reservoir	OCD Lease Type	Reporting Serial
CANYON LARGO UNIT	92	3003905562	Gas	PROD	PICTURED CLIFFS	Federal	PC PA - NMNM78383A
CANYON LARGO UNIT	157	3003920281	Gas	PROD	PICTURED CLIFFS	Federal	PC PA - NMNM78383A
CANYON LARGO UNIT	173	3003920893	Gas	PROD	PICTURED CLIFFS	Federal	PC PA - NMNM78383A
CANYON LARGO UNIT	181	3003920544	Gas	PROD	PICTURED CLIFFS	Federal	PC PA - NMNM78383A
CANYON LARGO UNIT	501	3003930811	Gas	PROD	DAKOTA	Federal	Lease Basis - NMSF078878
CANYON LARGO UNIT	56	3003905867	Gas	PROD	PICTURED CLIFFS	Federal	PC PA - NMNM78383A
CANYON LARGO UNIT	174	3003920537	Gas	PROD	PICTURED CLIFFS	Federal	PC PA - NMNM78383A
CANYON LARGO UNIT	180	3003920543	Gas	PROD	PICTURED CLIFFS	Federal	PC PA - NMNM78383A
CANYON LARGO UNIT	193	3003920706	Gas	PROD	PICTURED CLIFFS	Federal	PC PA - NMNM78383A
CANYON LARGO UNIT	447	3003925480	Gas	PROD	GALLUP	Federal	GL PA - NMNM78383C
CANYON LARGO UNIT	447	3003925480	Gas	PROD	DAKOTA	Federal	GL PA - NMNM78383C
CANYON LARGO UNIT	499	3003930810	Gas	PROD	DAKOTA	Federal	Lease Basis - NMSF078879
CANYON LARGO UNIT	505	3003931097	Gas	PROD	DAKOTA	Federal	Lease Basis - NMSF078879
CANYON LARGO UNIT	54	3003905880	Gas	PROD	PICTURED CLIFFS	Federal	PC PA - NMNM78383A

Well Name	Well No.	API	State Well Classification	Well Status	Reservoir	OCD Lease Type	Reporting Serial
CANYON LARGO UNIT	79	3003905960	Gas	PROD	PICTURED CLIFFS	Federal	PC PA - NMNM78383A
CANYON LARGO UNIT	156	3003920280	Gas	PROD	PICTURED CLIFFS	Federal	PC PA - NMNM78383A
CANYON LARGO UNIT	179	3003920542	Gas	PROD	PICTURED CLIFFS	Federal	PC PA - NMNM78383A
CANYON LARGO UNIT	242	3003920898	Gas	PROD	PICTURED CLIFFS	Federal	PC PA - NMNM78383A
CANYON LARGO UNIT	255	3003920906	Gas	PROD	DAKOTA	Federal	DK PA - NMNM78383D
CANYON LARGO UNIT	255E	3003925749	Gas	PROD	DAKOTA	Federal	DK PA - NMNM78383D
CANYON LARGO UNIT	425	3003925367	Gas	PROD	DAKOTA	Federal	Lease Basis - NMSF078880
CANYON LARGO UNIT	425E	3003930082	Gas	PROD	DAKOTA	Federal	Lease Basis - NMSF078880
CANYON LARGO UNIT	428	3003925485	Gas	PROD	GALLUP	Federal	Lease Basis - NMSF078880
CANYON LARGO UNIT	428	3003925485	Gas	PROD	DAKOTA	Federal	DK PA - NMNM78383D
CANYON LARGO UNIT	428E	3003927584	Gas	PROD	DAKOTA	Federal	DK PA - NMNM78383D
CANYON LARGO UNIT	431	3003925386	Gas	PROD	DAKOTA	Federal	DK PA - NMNM78383D
CANYON LARGO UNIT	431E	3003927585	Gas	PROD	DAKOTA	Federal	DK PA - NMNM78383D
CANYON LARGO UNIT	464	3003927871	Gas	PROD	DAKOTA	Federal	Lease Basis - NMSF078880
CANYON LARGO UNIT	469	3003929381	Gas	PROD	DAKOTA	Federal	DK PA - NMNM78383D
CANYON LARGO UNIT	52	3003905970	Gas	PROD	PICTURED CLIFFS	Federal	PC PA - NMNM78383A

Well Name	Well No.	API	State Well Classification	Well Status	Reservoir	OCD Lease Type	Reporting Serial
CANYON LARGO UNIT	448	3003926007	Gas	PROD	DAKOTA	Federal	Lease Basis - NMSF078881
CANYON LARGO UNIT	450	3003926515	Gas	PROD	DAKOTA	Federal	DK PA - NMNM78383D
CANYON LARGO UNIT	452	3003927018	Gas	PROD	DAKOTA	Federal	DK PA - NMNM78383D
CANYON LARGO UNIT	455	3003927749	Gas	PROD	DAKOTA	Federal	Lease Basis - NMSF078881
CANYON LARGO UNIT	455	3003927749	Gas	PROD	MANCOS	Federal	Lease Basis - NMSF078881
CANYON LARGO UNIT	463	3003929361	Gas	PROD	DAKOTA	Federal	Lease Basis - NMSF078881
CANYON LARGO UNIT	482	3003931042	Gas	PROD	DAKOTA	Federal	Lease Basis - NMSF078881
CANYON LARGO UNIT	50	3003906141	Gas	PROD	PICTURED CLIFFS	Federal	PC PA - NMNM78383A
CANYON LARGO UNIT	49	3003906164	Gas	PROD	PICTURED CLIFFS	Federal	PC PA - NMNM78383A
CANYON LARGO UNIT	144	3003920270	Gas	PROD	PICTURED CLIFFS	Federal	PC PA - NMNM78383A
CANYON LARGO UNIT	342	3003923385	Gas	P&A		Federal	P&A
CANYON LARGO UNIT	37	3003905946	Gas	PROD	PICTURED CLIFFS	Federal	PC PA - NMNM78383A
CANYON LARGO UNIT	38	3003905884	Gas	PROD	PICTURED CLIFFS	Federal	PC PA - NMNM78383A
CANYON LARGO UNIT	415	3003925379	Gas	PROD	DAKOTA	Federal	Lease Basis - NMSF078882
CANYON LARGO UNIT	451	3003926646	Gas	PROD	DAKOTA	Federal	DK PA - NMNM78383D
CANYON LARGO UNIT	488	3003930057	Gas	PROD	DAKOTA	Federal	DK PA - NMNM78383D

Well Name	Well No.	API	State Well Classification	Well Status	Reservoir	OCD Lease Type	Reporting Serial
CANYON LARGO UNIT	489	3003930039	Gas	PROD	DAKOTA	Federal	Lease Basis - NMSF078882
CANYON LARGO UNIT	490	3003930056	Gas	PROD	GALLUP	Federal	Lease Basis - NMSF078882
CANYON LARGO UNIT	490	3003930056	Gas	PROD	DAKOTA	Federal	Lease Basis - NMSF078882
CANYON LARGO UNIT	491	3003930054	Gas	PROD	DAKOTA	Federal	Lease Basis - NMSF078882
CANYON LARGO UNIT	29	3003906059	Gas	PROD	PICTURED CLIFFS	Federal	PC PA - NMNM78383A
CANYON LARGO UNIT	454	3003927745	Gas	PROD	DAKOTA	Federal	DK PA - NMNM78383D
CANYON LARGO UNIT	459	3003927746	Gas	PROD	DAKOTA	Federal	Lease Basis - NMSF078883
CANYON LARGO UNIT	460	3003927747	Gas	PROD	DAKOTA	Federal	Lease Basis - NMSF078883
CANYON LARGO UNIT	461	3003927748	Gas	PROD	DAKOTA	Federal	Lease Basis - NMSF078883
CANYON LARGO UNIT	461E	3003930820	Gas	PROD	DAKOTA	Federal	Lease Basis - NMSF078883
CANYON LARGO UNIT	485	3003929716	Gas	PROD	DAKOTA	Federal	DK PA - NMNM78383D
CANYON LARGO UNIT	485E	3003931060	Gas	PROD	DAKOTA	Federal	DK PA - NMNM78383D
CANYON LARGO UNIT	485E	3003931060	Gas	PROD	MANCOS	Federal	Lease Basis - NMSF078883
CANYON LARGO UNIT	486	3003929722	Gas	PROD	DAKOTA	Federal	DK PA - NMNM78383D
CANYON LARGO UNIT	61	3003923820	Gas	PROD	PICTURED CLIFFS	Federal	PC PA - NMNM78383A
CANYON LARGO UNIT	27	3003906162	Gas	PROD	PICTURED CLIFFS	Federal	PC PA - NMNM78383A
CANYON LARGO UNIT	107	3003982340	Gas	PROD	CHACRA	Federal	CH PA - NMNM78383B

Well Name	Well No.	API	State Well Classification	Well Status	Reservoir	OCD Lease Type	Reporting Serial
CANYON LARGO UNIT	13	3003906044	Gas	PROD	PICTURED CLIFFS	Federal	PC PA - NMNM78383A
CANYON LARGO UNIT	154	3003920278	Gas	PROD	CHACRA	Federal	CH PA - NMNM78383B
CANYON LARGO UNIT	165	3003920407	Gas	PROD	CHACRA	Federal	CH PA - NMNM78383B
CANYON LARGO UNIT	178	3003920530	Gas	PROD	PICTURED CLIFFS	Federal	PC PA - NMNM78383A
CANYON LARGO UNIT	229	3003920791	Gas	PROD	PICTURED CLIFFS	Federal	PC PA - NMNM78383A
CANYON LARGO UNIT	230	3003920783	Gas	PROD	PICTURED CLIFFS	Federal	PC PA - NMNM78383A
CANYON LARGO UNIT	238	3003920793	Gas	PROD	CHACRA	Federal	Lease Basis - NMSF078884
CANYON LARGO UNIT	238	3003920793	Gas	PROD	MESAVERDE	Federal	CH PA - NMNM78383B
CANYON LARGO UNIT	240	3003920640	Gas	PROD	DAKOTA	Federal	DK PA - NMNM78383D
CANYON LARGO UNIT	253	3003920806	Gas	PROD	DAKOTA	Federal	DK PA - NMNM78383D
CANYON LARGO UNIT	254	3003920807	Gas	PROD	DAKOTA	Federal	DK PA - NMNM78383D
CANYON LARGO UNIT	254E	3003930014	Gas	PROD	DAKOTA	Federal	DK PA - NMNM78383D
CANYON LARGO UNIT	279E	3003930439	Gas	PROD	DAKOTA	Federal	DK PA - NMNM78383D
CANYON LARGO UNIT	288	3003921172	Gas	PROD	CHACRA	Federal	CH PA - NMNM78383B
CANYON LARGO UNIT	288	3003921172	Gas	PROD	DAKOTA	Federal	DK PA - NMNM78383D
CANYON LARGO UNIT	288E	3003930470	Gas	PROD	DAKOTA	Federal	DK PA - NMNM78383D

Well Name	Well No.	API	State Well Classification	Well Status	Reservoir	OCD Lease Type	Reporting Serial
CANYON LARGO UNIT	33	3003906081	Gas	PROD	PICTURED CLIFFS	Federal	PC PA - NMNM78383A
CANYON LARGO UNIT	35	3003906046	Gas	PROD	PICTURED CLIFFS	Federal	PC PA - NMNM78383A
CANYON LARGO UNIT	36	3003905999	Gas	PROD	PICTURED CLIFFS	Federal	PC PA - NMNM78383A
CANYON LARGO UNIT	409	3003925385	Gas	PROD	DAKOTA	Federal	DK PA - NMNM78383D
CANYON LARGO UNIT	409	3003925385	Gas	PROD	CHACRA	Federal	CH PA - NMNM78383B
CANYON LARGO UNIT	409E	3003929959	Gas	PROD	DAKOTA	Federal	DK PA - NMNM78383D
CANYON LARGO UNIT	449	3003926370	Gas	PROD	DAKOTA	Federal	DK PA - NMNM78383D
CANYON LARGO UNIT	449E	3003929962	Gas	PROD	DAKOTA	Federal	DK PA - NMNM78383D
CANYON LARGO UNIT	69	3003906002	Gas	PROD	CHACRA	Federal	CH PA - NMNM78383B
CANYON LARGO UNIT	11	3003906194	Gas	PROD	PICTURED CLIFFS	Federal	PC PA - NMNM78383A
CANYON LARGO UNIT	150	3003920252	Gas	PROD	CHACRA	Federal	CH PA - NMNM78383B
CANYON LARGO UNIT	186	3003920501	Gas	PROD	DAKOTA	Federal	DK PA - NMNM78383D
CANYON LARGO UNIT	186	3003920501	Gas	PROD	MESAVERDE	Federal	Lease Basis - NMSF078885
CANYON LARGO UNIT	203	3003920756	Gas	PROD	PICTURED CLIFFS	Federal	PC PA - NMNM78383A
CANYON LARGO UNIT	204	3003920747	Gas	PROD	PICTURED CLIFFS	Federal	PC PA - NMNM78383A

Well Name	Well No.	API	State Well Classification	Well Status	Reservoir	OCD Lease Type	Reporting Serial
CANYON LARGO UNIT	224	3003920786	Gas	PROD	PICTURED CLIFFS	Federal	PC PA - NMNM78383A
CANYON LARGO UNIT	237	3003920792	Gas	PROD	MESAVERDE	Federal	MV PA - NMNM78383F
CANYON LARGO UNIT	237	3003920792	Gas	PROD	CHACRA	Federal	CH PA - NMNM78383B
CANYON LARGO UNIT	239	3003920639	Gas	PROD	DAKOTA	Federal	DK PA - NMNM78383D
CANYON LARGO UNIT	239	3003920639	Gas	PROD	MESAVERDE	Federal	DK PA - NMNM78383D
CANYON LARGO UNIT	239E	3003925549	Gas	PROD	DAKOTA	Federal	DK PA - NMNM78383D
CANYON LARGO UNIT	239E	3003925549	Gas	PROD	MESAVERDE	Federal	MV PA - NMNM78383F
CANYON LARGO UNIT	239N	3003930883	Gas	PROD	MESAVERDE	Federal	MV PA - NMNM78383F
CANYON LARGO UNIT	239N	3003930883	Gas	PROD	DAKOTA	Federal	DK PA - NMNM78383D
CANYON LARGO UNIT	239N	3003930883	Gas	PROD	CHACRA	Federal	CH PA - NMNM78383B
CANYON LARGO UNIT	239P	3003930882	Gas	PROD	DAKOTA	Federal	DK PA - NMNM78383D
CANYON LARGO UNIT	239P	3003930882	Gas	PROD	MESAVERDE	Federal	MV PA - NMNM78383F
CANYON LARGO UNIT	250	3003920804	Gas	PROD	DAKOTA	Federal	DK PA - NMNM78383D
CANYON LARGO UNIT	250E	3003925720	Gas	PROD	DAKOTA	Federal	DK PA - NMNM78383D
CANYON LARGO UNIT	250E	3003925720	Gas	PROD	MESAVERDE	Federal	MV PA - NMNM78383F
CANYON LARGO UNIT	250E	3003925720	Gas	PROD	CHACRA	Federal	CH PA - NMNM78383B
CANYON LARGO UNIT	250N	3003930398	Gas	PROD	DAKOTA	Federal	DK PA - NMNM78383D
CANYON LARGO UNIT	250P	3003930878	Gas	PROD	MESAVERDE	Federal	MV PA - NMNM78383F
CANYON LARGO UNIT	250P	3003930878	Gas	PROD	DAKOTA	Federal	DK PA - NMNM78383D

Well Name	Well No.	API	State Well Classification	Well Status	Reservoir	OCD Lease Type	Reporting Serial
CANYON LARGO UNIT	252	3003920805	Gas	PROD	MESAVERDE	Federal	DK PA - NMNM78383D
CANYON LARGO UNIT	252	3003920805	Gas	PROD	DAKOTA	Federal	DK PA - NMNM78383D
CANYON LARGO UNIT	278	3003920889	Gas	PROD	DAKOTA	Federal	DK PA - NMNM78383D
CANYON LARGO UNIT	278	3003920889	Gas	PROD	CHACRA	Federal	CH PA - NMNM78383B
CANYON LARGO UNIT	278E	3003929960	Gas	PROD	MESAVERDE	Federal	DK PA - NMNM78383D
CANYON LARGO UNIT	278E	3003929960	Gas	PROD	MANCOS	Federal	DK PA - NMNM78383D
CANYON LARGO UNIT	278E	3003929960	Gas	PROD	DAKOTA	Federal	DK PA - NMNM78383D
CANYON LARGO UNIT	287M	3003925550	Gas	PROD	MESAVERDE	Federal	Lease Basis - NMSF078885
CANYON LARGO UNIT	287M	3003925550	Gas	PROD	DAKOTA	Federal	DK PA - NMNM78383D
CANYON LARGO UNIT	292E	3003930951	Gas	PROD	DAKOTA	Federal	DK PA - NMNM78383D
CANYON LARGO UNIT	292F	3003930952	Gas	PROD	DAKOTA	Federal	DK PA - NMNM78383D
CANYON LARGO UNIT	31	3003906073	Gas	PROD	PICTURED CLIFFS	Federal	PC PA - NMNM78383A
CANYON LARGO UNIT	32	3003906117	Gas	PROD	PICTURED CLIFFS	Federal	PC PA - NMNM78383A
CANYON LARGO UNIT	388	3003925277	Gas	PROD	CHACRA	Federal	CH PA - NMNM78383B
CANYON LARGO UNIT	465	3003929380	Gas	PROD	DAKOTA	Federal	Lease Basis - NMSF078885
CANYON LARGO UNIT	465E	3003930478	Gas	PROD	DAKOTA	Federal	DK PA - NMNM78383D
CANYON LARGO UNIT	67	3003906189	Gas	PROD	PICTURED CLIFFS	Federal	PC PA - NMNM78383A

Well Name	Well No.	API	State Well Classification	Well Status	Reservoir	OCD Lease Type	Reporting Serial
CANYON LARGO UNIT	90	3003906195	Gas	PROD	PICTURED CLIFFS	Federal	PC PA - NMNM78383A
CANYON LARGO UNIT	292	3003922202	Gas	PROD	DAKOTA	Federal	DK PA - NMNM78383D
CANYON LARGO UNIT	106	3003905414	Gas	PROD	PICTURED CLIFFS	Federal	PC PA - NMNM78383A
CANYON LARGO UNIT	261	3003920932	Gas	PROD	PICTURED CLIFFS	Federal	PC PA - NMNM78383A
CANYON LARGO UNIT	324	3003923338	Gas	PROD	GALLUP	Federal	GL PA - NMNM78383C
CANYON LARGO UNIT	466	3003929379	Gas	PROD	MANCOS	Federal	GL PA - NMNM78383C
CANYON LARGO UNIT	466	3003929379	Gas	PROD	DAKOTA	Federal	GL PA - NMNM78383C
CANYON LARGO UNIT	475	3003929794	Gas	EXPIRED	DAKOTA	Federal	Cancelled Permit
CANYON LARGO UNIT	478	3003929620	Gas	EXPIRED	DAKOTA	Federal	Cancelled Permit
CANYON LARGO UNIT	5	3003905415	Gas	PROD	PICTURED CLIFFS	Federal	PC PA - NMNM78383A
CANYON LARGO UNIT	332	3003923326	Gas	PROD	GALLUP	Federal	GL PA - NMNM78383C
CANYON LARGO UNIT	333	3003923346	Gas	PROD	GALLUP	Federal	GL PA - NMNM78383C
CANYON LARGO UNIT	340	3003923402	Gas	PROD	GALLUP	Federal	GL PA - NMNM78383C
CANYON LARGO UNIT	456	3003927743	Gas	PROD	DAKOTA	Federal	LEASE - NMSF078922
CANYON LARGO UNIT	456	3003927743	Gas	PROD	MANCOS	Federal	LEASE - NMSF078923
CANYON LARGO UNIT	462	3003927744	Gas	PROD	MANCOS	Federal	LEASE - NMSF078924
CANYON LARGO UNIT	462	3003927744	Gas	PROD	DAKOTA	Federal	LEASE - NMSF078925

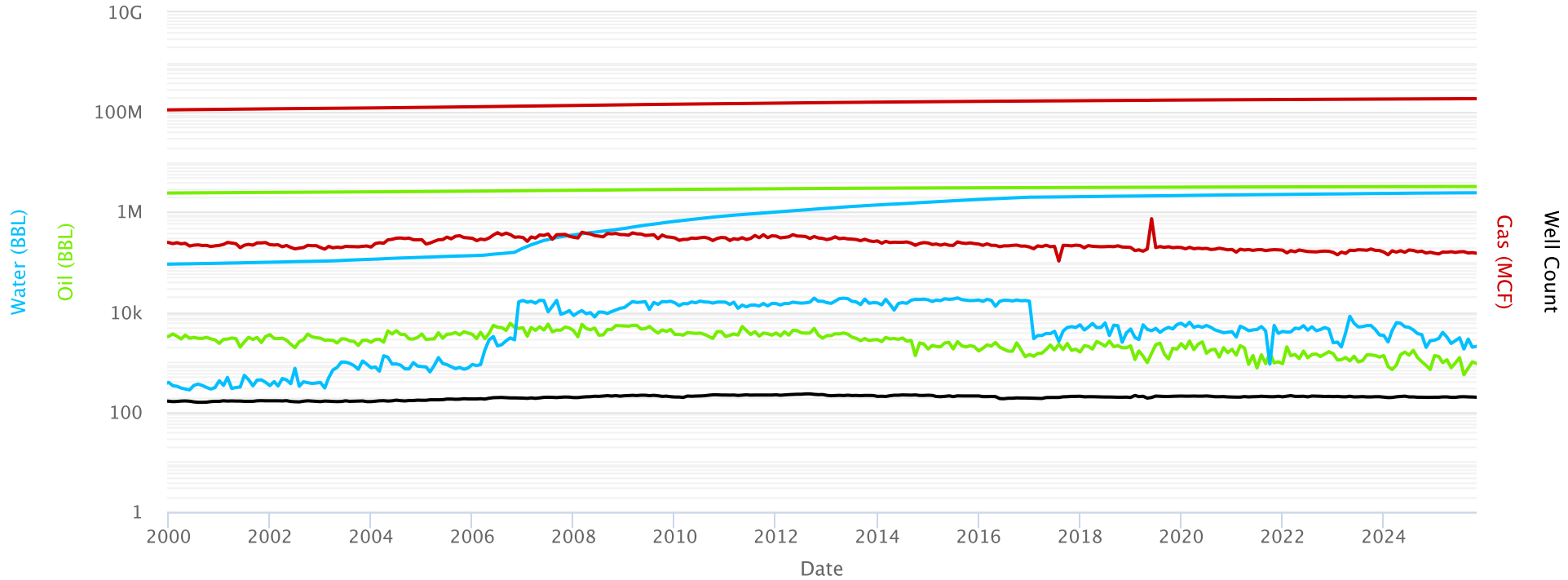
Well Name	Well No.	API	State Well Classification	Well Status	Reservoir	OCD Lease Type	Reporting Serial
CANYON LARGO UNIT	198	3003920703	Gas	PROD	PICTURED CLIFFS	Federal	PC PA - NMNM78383A
CANYON LARGO UNIT	199	3003920702	Gas	PROD	PICTURED CLIFFS	Federal	PC PA - NMNM78383A
CANYON LARGO UNIT	200	3003920725	Gas	PROD	PICTURED CLIFFS	Federal	PC PA - NMNM78383A
CANYON LARGO UNIT	82R	3003926215	Gas	PROD	PICTURED CLIFFS	Federal	PC PA - NMNM78383A
CANYON LARGO UNIT	313	3003922939	Gas	PROD	GALLUP	Federal	DK PA - NMNM78383D
CANYON LARGO UNIT	313	3003922939	Gas	PROD	DAKOTA	Federal	DK PA - NMNM78383D
CANYON LARGO UNIT	316	3003923009	Gas	PROD	DAKOTA	Federal	DK PA - NMNM78383D
CANYON LARGO UNIT	317	3003923090	Gas	PROD	GALLUP	Federal	GL PA - NMNM78383C
CANYON LARGO UNIT	319	3003905791	Gas	PROD	GALLUP	Federal	GL PA - NMNM78383C
CANYON LARGO UNIT	141	3003920074	Gas	PROD	CHACRA	Federal	CH PA - NMNM78383B
CANYON LARGO UNIT	143	3003920099	Gas	PROD	CHACRA	Federal	CH PA - NMNM78383B
CANYON LARGO UNIT	336	3003923410	Gas	PROD	PICTURED CLIFFS	Federal	PC PA - NMNM78383A
CANYON LARGO UNIT	470	3003929378	Gas	PROD	DAKOTA	Federal	DK PA - NMNM78383D
CANYON LARGO UNIT	483	3003929713	Gas	PROD	DAKOTA	Federal	DK PA - NMNM78383D
CANYON LARGO UNIT	94	3003905963	Gas	PROD	PICTURED CLIFFS	Federal	PC PA - NMNM78383A
CANYON LARGO UNIT	341	3003923403	Gas	PROD	GALLUP	Federal	GL PA - NMNM78383C

Well Name	Well No.	API	State Well Classification	Well Status	Reservoir	OCD Lease Type	Reporting Serial
CANYON LARGO UNIT	297	3003922386	Gas	PROD	DAKOTA	Federal	DK PA - NMNM78383D
CANYON LARGO UNIT	297E	3003930427	Gas	PROD	DAKOTA	Federal	DK PA - NMNM78383D
CANYON LARGO UNIT	83	3003905679	Gas	PROD	PICTURED CLIFFS	Federal	PC PA - NMNM78383A
CANYON LARGO UNIT	84	3003905452	Gas	PROD	PICTURED CLIFFS	Federal	PC PA - NMNM78383A
CANYON LARGO UNIT	87	3003905673	Gas	PROD	PICTURED CLIFFS	Federal	PC PA - NMNM78383A
CANYON LARGO UNIT COM	136	3003982259	Gas	PROD	CHACRA	FEE	LEASE - NMNM73959
CANYON LARGO UNIT COM	136	3003982259	Gas	PROD	PICTURED CLIFFS	FEE	LEASE - NMNM73959
CANYON LARGO UNIT COM	26	3003906140	Gas	PROD	PICTURED CLIFFS	FEE	PC PA - NMNM78383A
CANYON LARGO UNIT COM	471	3003929377	Gas	PROD	DAKOTA	FEE	LEASE - NMNM117734
CANYON LARGO UNIT COM	484	3003929721	Gas	PROD	DAKOTA	FEE	LEASE - NMNM120420
CANYON LARGO UNIT COM	468	3003929383	Gas	PROD	DAKOTA	Federal	LEASE- NMNM115845
CANYON LARGO UNIT COM	295	3003922260	Gas	PROD	DAKOTA	Federal	LEASE - NMNM88367
CANYON LARGO UNIT COM	481	3003929641	Gas	PROD	DAKOTA	Federal	LEASE- NMNM117353
CANYON LARGO UNIT COM	487	3003929717	Gas	PROD	DAKOTA	Federal	LEASE - NMNM123952
CANYON LARGO UNIT COM	142	3003920130	Gas	PROD	CHACRA	Federal	LEASE - NMNM74016
CANYON LARGO UNIT COM	30	3003906093	Gas	PROD	PICTURED CLIFFS	Federal	LEASE - NMNM74064

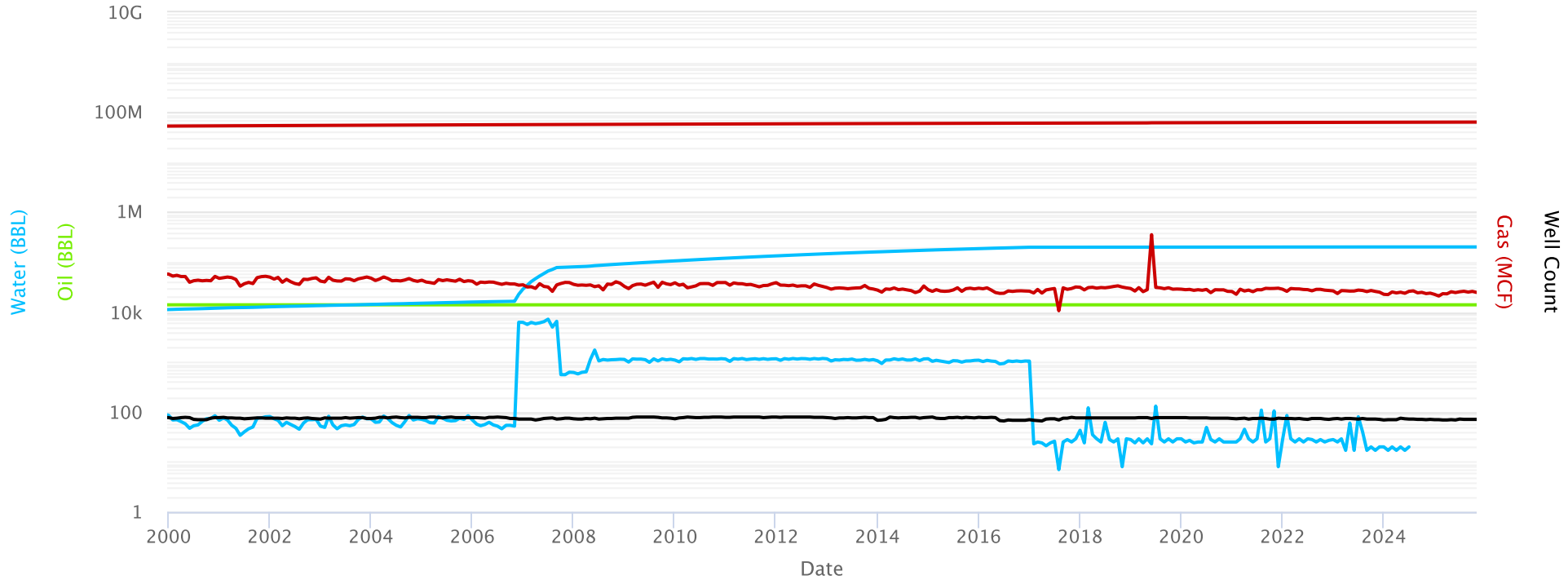
Well Name	Well No.	API	State Well Classification	Well Status	Reservoir	OCD Lease Type	Reporting Serial
CANYON LARGO UNIT COM	40	3003905900	Gas	PROD	PICTURED CLIFFS	Federal	LEASE - NMNM97677
CANYON LARGO UNIT COM	472	3003930001	Gas	PROD	DAKOTA	Federal	LEASE - NMNM120265
CANYON LARGO UNIT COM	110	3003905675	Gas	PROD	DAKOTA	Federal	LEASE - NMNM73647
CANYON LARGO UNIT COM	111	3003905651	Gas	PROD	DAKOTA	Federal	LEASE - NMSF080594
CANYON LARGO UNIT COM	318E	3003930434	Gas	PROD	DAKOTA	Federal	LEASE - NMNM68163
CANYON LARGO UNIT COM	318F	3003930540	Gas	PROD	DAKOTA	Federal	LEASE - NMNM68163
CANYON LARGO UNIT COM	318	3003923263	Gas	PROD	DAKOTA	Federal	LEASE - NMNM68163
CANYON LARGO UNIT COM NP	137	3003920073	Gas	PROD	PICTURED CLIFFS	Federal	LEASE - NMNM73992
CANYON LARGO UNIT NP	457	3003929282	Gas	PROD	GALLUP	State	Needs GP Com Agreement
CANYON LARGO UNIT NP	457	3003929282	Gas	PROD	DAKOTA	State	State Com dtd 6.3.2005 - DK
CANYON LARGO UNIT NP	182	3003923550	Gas	P&A	GALLUP	State	P&A
CANYON LARGO UNIT NP	188	3003920498	Gas	PROD	DAKOTA	Federal	Lease Basis - NMSF078875
CANYON LARGO UNIT NP	122	3003905532	Gas	PROD	MESAVERDE	Federal	Lease Basis - NMSF078877
CANYON LARGO UNIT NP	349	3003923574	Gas	PROD	MESAVERDE	Federal	MV PA - NMNM78383B
CANYON LARGO UNIT NP	453	3003927583	Gas	PROD	DAKOTA	Federal	LEASE - NMSF078879
CANYON LARGO UNIT NP	453	3003927583	Gas	PROD	GALLUP	Federal	LEASE - NMSF078879
CANYON LARGO UNIT NP	146	3003920232	Gas	PROD	PICTURED CLIFFS	Federal	LEASE - NMSF078880

Well Name	Well No.	API	State Well Classification	Well Status	Reservoir	OCD Lease Type	Reporting Serial
CANYON LARGO UNIT NP	78	3003960048	Gas	PROD	PICTURED CLIFFS	Federal	LEASE - NMSF078880
CANYON LARGO UNIT NP	187	3003920548	Gas	PROD	DAKOTA	Federal	LEASE - NMSF078882
CANYON LARGO UNIT NP	89	3003905441	Gas	PROD	GALLUP	Federal	GL PA - NMNM78383C
CANYON LARGO UNIT NP	89	3003905441	Gas	PROD	DAKOTA	Federal	LEASE - NMSF078886
CANYON LARGO UNIT NP	347	3003923575	Gas	PROD	MESAVERDE	Federal	LEASE - NMSF078922

Monthly Production



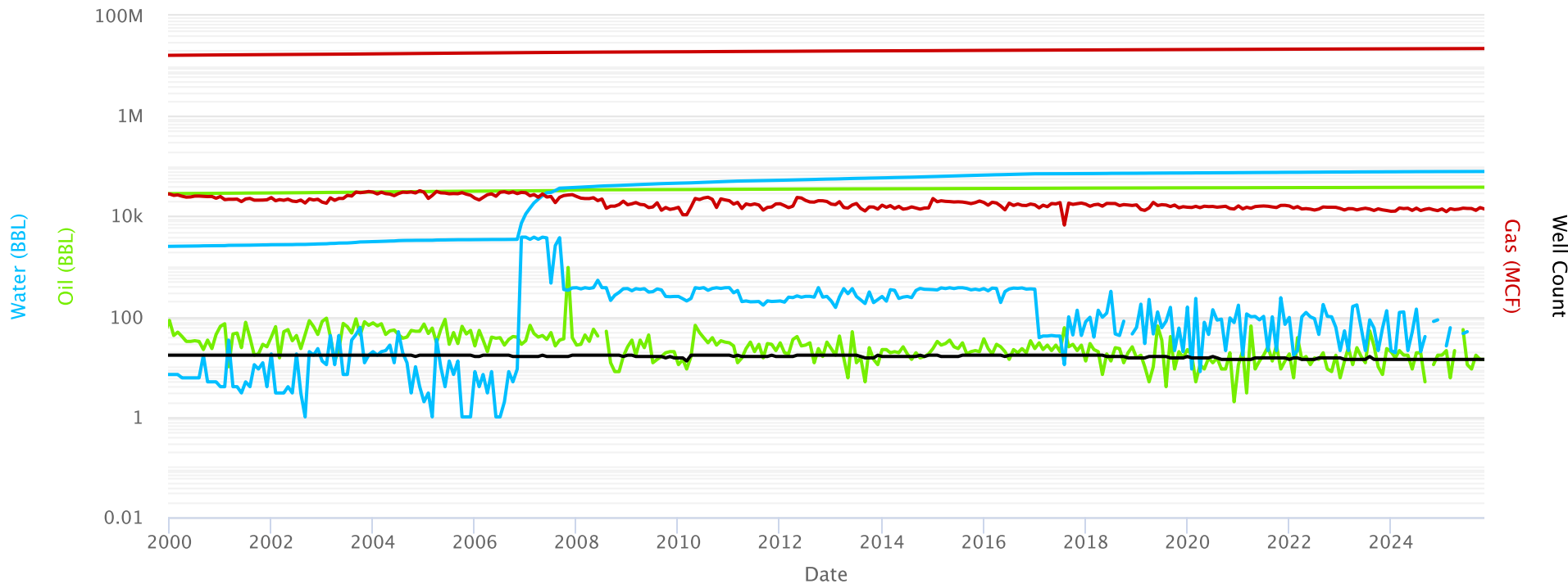
Canyon Largo Unit NMNM 078383A PC Pictured Cliffs PA - 47th Revision Monthly Production



■ Cum Oil
■ Cum Gas
■ Cum Water
■ Oil
■ Gas
■ Water
■ Well Count

Chacra PA - 11th Revision

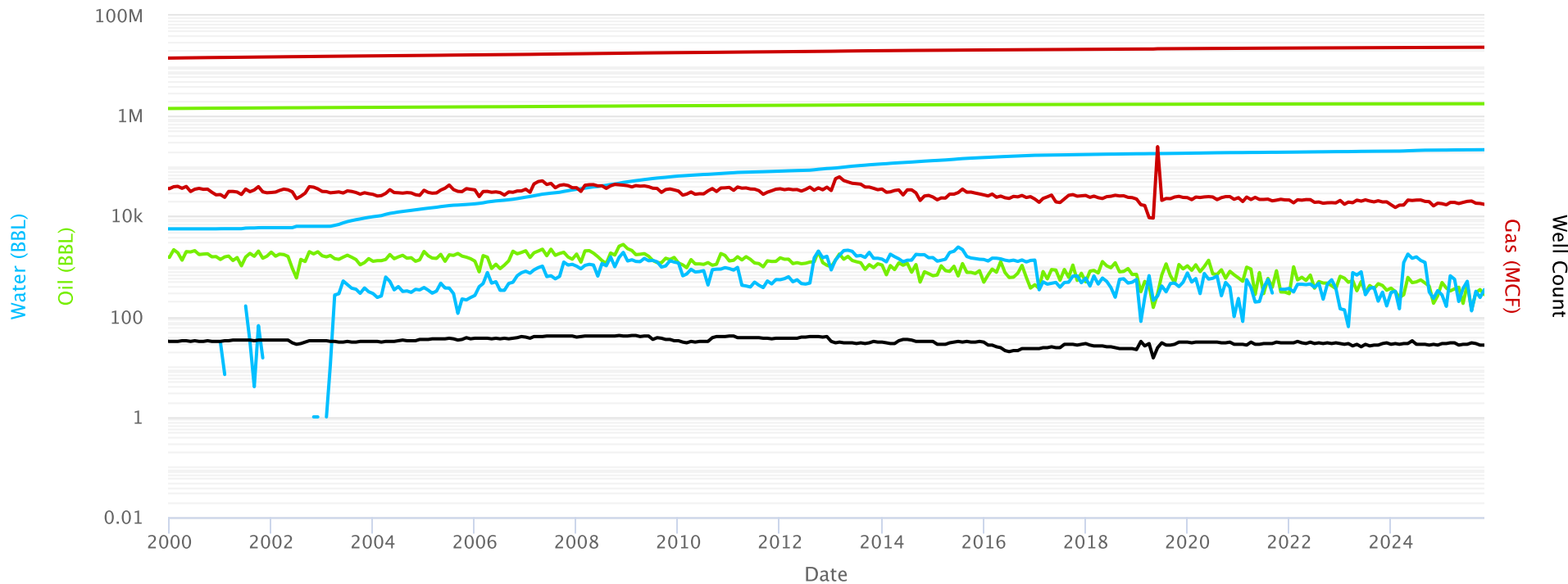
Monthly Production



Canyon Largo Unit NMNM 078383C GP MC

Gallup/Mancos PA - 27th Revision

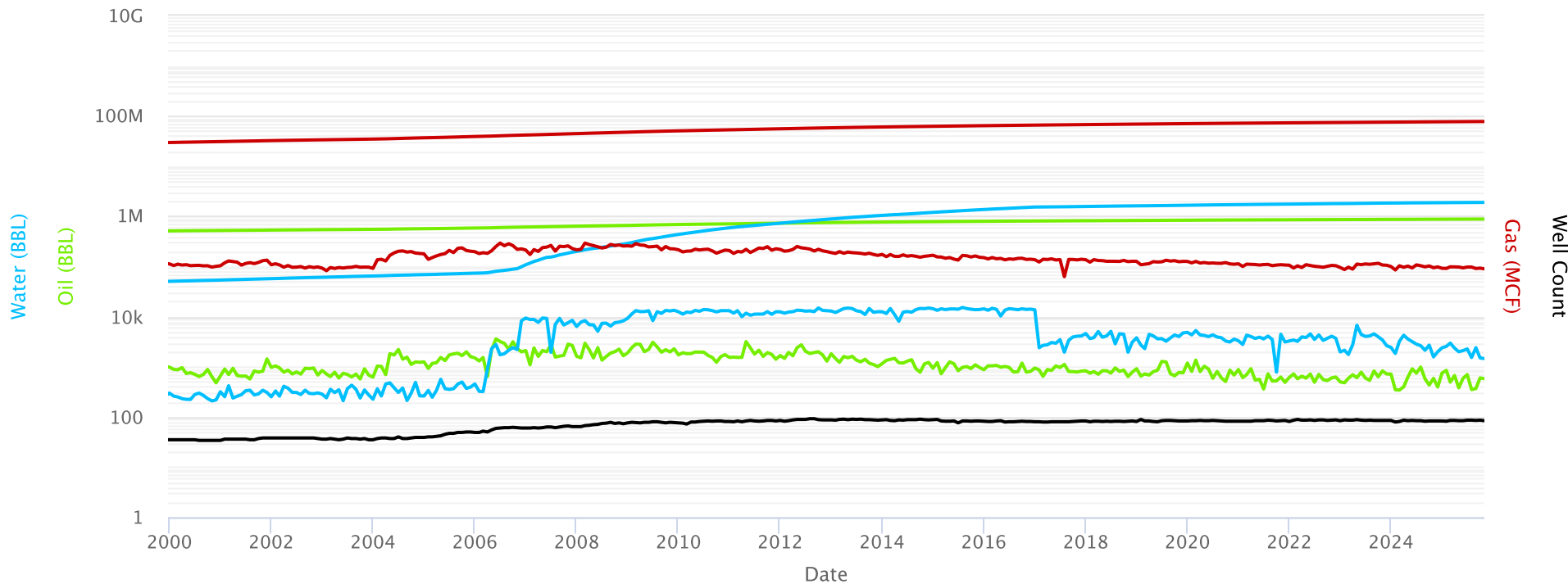
Monthly Production



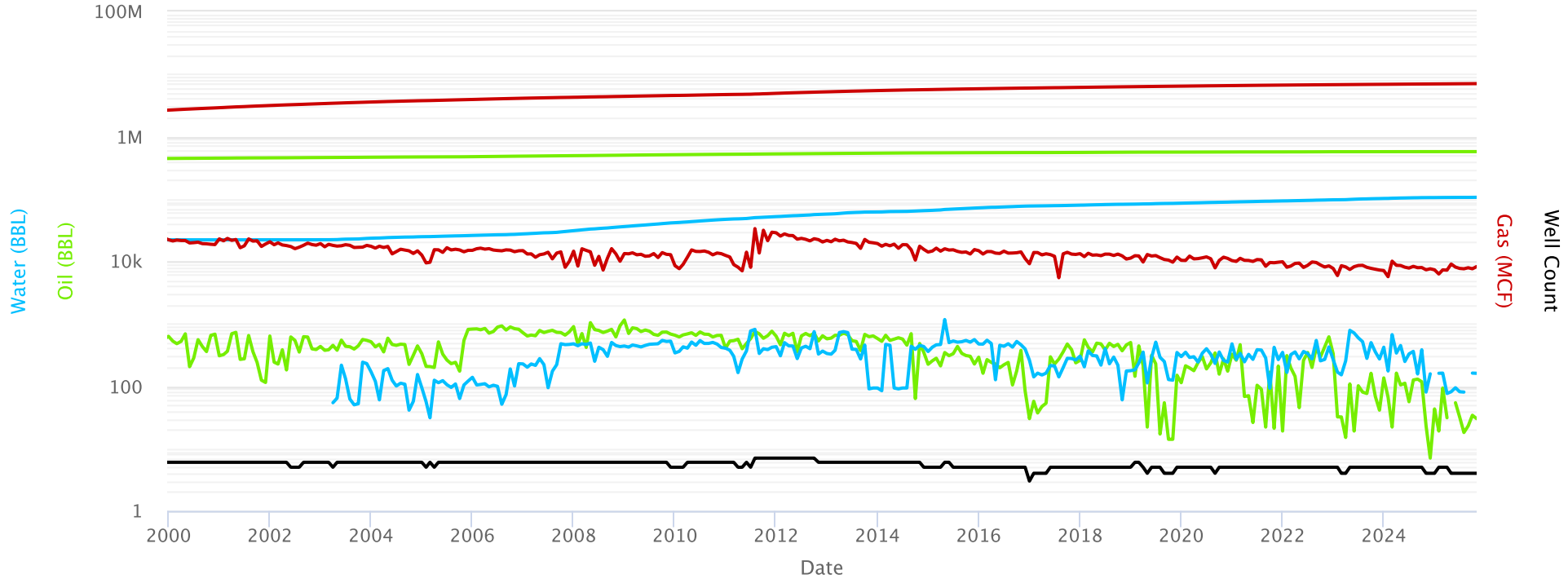
● Cum Oil ● Cum Gas ■ Cum Water ● Oil ● Gas ● Water ● Well Count

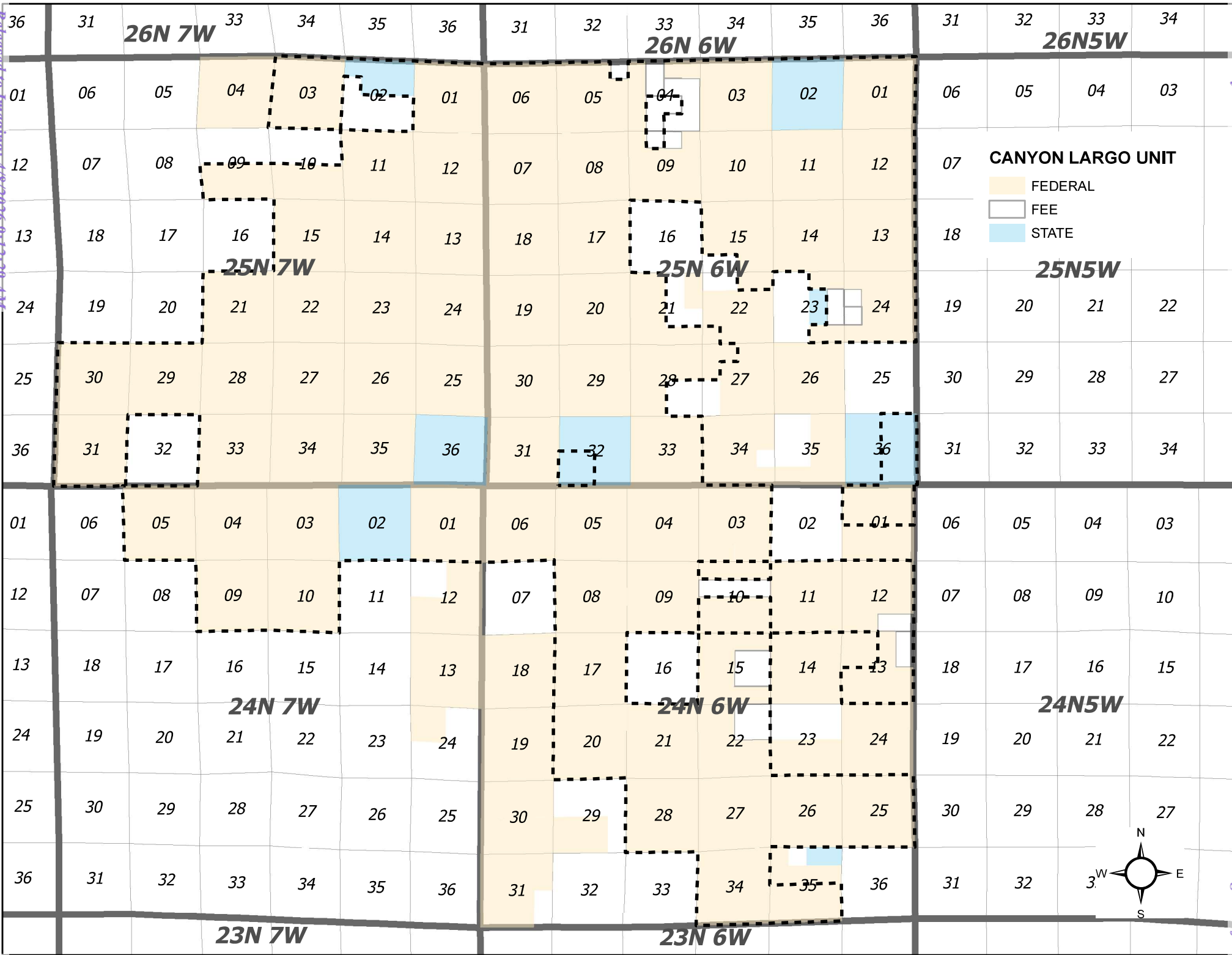
Dakota PA - 35th Revision

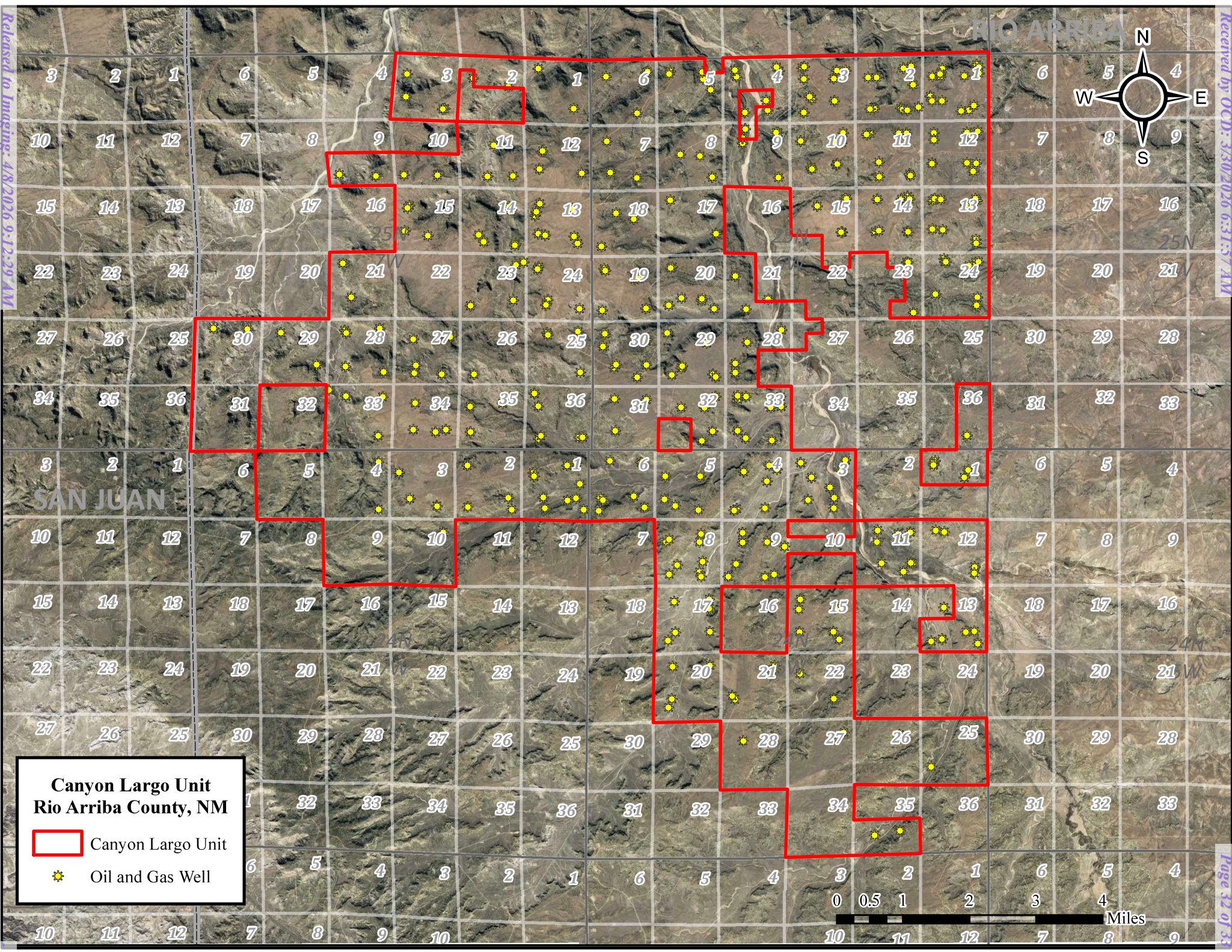
Monthly Production




Mesaverde PA B - 1st Revision Monthly Production








Canyon Largo Unit
Rio Arriba County, NM

 Canyon Largo Unit

 Oil and Gas Well



Sante Fe Main Office
Phone: (505) 476-3441

General Information
Phone: (505) 629-6116

Online Phone Directory
<https://www.emnrd.nm.gov/ocd/contact-us>

State of New Mexico
Energy, Minerals and Natural Resources
Oil Conservation Division
1220 S. St Francis Dr.
Santa Fe, NM 87505

CONDITIONS

Action 568668

CONDITIONS

Operator: HILCORP ENERGY COMPANY 1111 Travis Street Houston, TX 77002	OGRID: 372171
	Action Number: 568668
	Action Type: [HEAR] Order Compliance/Progress Report (ORDER COMPLIANCE REPORT)

CONDITIONS

Created By	Condition	Condition Date
dmcclure	ACCEPTED FOR RECORD	4/8/2026