



February 26, 2026

Certified Tracking #: **9216 8969 0099 9790 1854 0199 17**

Attn: Kyle Paradis  
Bureau of Land Management  
301 Dinosaur Trail  
Santa Fe, NM 87508

Attn: Commissioner of Public Lands  
New Mexico State Land Office  
P.O Box 1148  
Santa Fe, NM 87504

**New Mexico Oil Conservation Division  
1220 S. Saint Francis Drive  
Santa Fe, NM 87505**

Re: 2026 Plan of Development  
**San Juan 29-7 Unit (NMNM078417X)**  
Rio Arriba County, New Mexico

Ladies & Gentleman:

Hilcorp Energy Company, as Operator, hereby tenders the enclosed 2026 Plan of Development ("POD") and 2025 summary/review of operations for your review along with accompanying well status lists and participating area production graphs.

In accordance with the subject Unit Agreement, please signify your approval and/or consent by executing and returning a copy of the attached approval page to the undersigned.

If you have any questions or concerns regarding this matter, please do not hesitate to contact me at the email or number provided in the footer below.

Sincerely,

A handwritten signature in blue ink that reads 'Gatewood D. Brown'.

Gatewood D. Brown  
Senior Landman – New Mexico

1111 Travis Street, Houston, TX 77002  
Phone: (713) 289-2767 [gabrown@hilcorp.com](mailto:gabrown@hilcorp.com)



**San Juan 29-7 Unit (NMNM078417X)  
2026 PLAN OF DEVELOPMENT APPROVALS**

\_\_\_\_\_  
**Bureau of Land Management**

\_\_\_\_\_  
**Date**

\_\_\_\_\_  
**New Mexico Oil Conservation Division**

\_\_\_\_\_  
**Date**

\_\_\_\_\_  
**New Mexico Commissioner of Public Lands**

\_\_\_\_\_  
**Date**

1111 Travis Street, Houston, TX 77002  
Phone: (713) 289-2767 gabrown@hilcorp.com

**2026 PLAN OF DEVELOPMENT  
SAN JUAN 29-7 UNIT  
NMNM-078417X  
RIO ARRIBA COUNTY, NEW MEXICO**

**Previous Year Operations:**

**Drilling:** Hilcorp Energy Company (“Hilcorp”) did not drill any wells in 2025.

**Recompletions:** Hilcorp executed the following recompletions in 2025:

Well Name	API	Section	Township	Range	Type
SAN JUAN 29-7 UNIT 004C	3003929635	10	29N	07W	FRC UPHOLE RECOMPLETE
SAN JUAN 29-7 UNIT 047A	3003921613	2	29N	07W	FRC UPHOLE RECOMPLETE
SAN JUAN 29-7 UNIT 071A	3003921631	24	29N	07W	FRC UPHOLE RECOMPLETE
SAN JUAN 29-7 UNIT 084A	3003921914	1	29N	07W	FRC UPHOLE RECOMPLETE
SAN JUAN 29-7 UNIT 102R	3003920514	15	29N	07W	FRC PC UPHOLE RECOMPLETE
SAN JUAN 29-7 UNIT 081M	3003927458	18	29N	07W	FRC PC UPHOLE RECOMPLETE
SAN JUAN 29-7 UNIT 080A	3003923882	9	29N	07W	FRC UPHOLE RECOMPLETE
SAN JUAN 29-7 UNIT 062A	3003925428	14	29N	07W	FRC PC UPHOLE RECOMPLETE
SAN JUAN 29-7 UNIT 064A	3003921614	11	29N	07W	FRC PC UPHOLE RECOMPLETE
SAN JUAN 29-7 UNIT 081N	3003929703	18	29N	07W	FRC PC UPHOLE RECOMPLETE

**Plug Back:** Hilcorp did not plug back any wells in 2025.

**Conversions:** Hilcorp did not convert any wells in 2025.

**Plug & Abandonment:** Hilcorp did not plug & abandon any wells in 2025:

**Participating Areas**

**Paying Well Determination:** Hilcorp did not submit any well for paying determination in 2025.

**PA Application Submitted or Approved:** Hilcorp did not submit a PA application in 2025.

**Surface Disturbing Activities:** Hilcorp performed two (2) sidetracks in 2025. No new surface disturbance was required.

**Water**

**Use:** Hilcorp executed ten (10) recompletions in 2025.

**Fresh Water:**

Drilling: N/A

Completion: Hilcorp used approximately 11,873 barrels for recompletions.

**Fresh Water Storage:**

Drilling: N/A

Completion: N/A

**Water Transfer:**

Drilling: N/A

Completion: N/A

Produced Water:  
 Drilling: N/A  
 Completion: N/A

Disposal:

SWD Well Name	API Number	Legal Description
N/A	N/A	N/A

2025 Water Disposal Data

Facility	Total (BBL)	Daily Avg (BPD)	Mode of Transport (Piped, Trucked, Both)
N/A	N/A	N/A	N/A

**Planned Year Operations:**

**Drilling:** Hilcorp anticipates drilling the following projects in the San Juan 29-7 Unit during 2026:

Well Name	API	Section	Township	Range	Type
SAN JUAN 29-7 UNIT 092N	3003931504	16	29N	06W	MK DK DRILL & COMPLETE
SAN JUAN 29-7 UNIT 045N	TBD	20	29N	07W	MK DK DRILL & COMPLETE

**Recompletions:** Hilcorp anticipates recompleting the following project in 2026:

Well Name	API	Section	Township	Range	Type
SAN JUAN 29-7 UNIT 037A	3003923951	12	29N	07W	FRC UPHOLE RECOMPLETE
SAN JUAN 29-7 UNIT 057B	3003925633	11	29N	07W	FRC UPHOLE RECOMPLETE
SAN JUAN 29-7 UNIT 106M	3003923940	36	29N	07W	FRC PC UPHOLE RECOMPLETE
SAN JUAN 29-7 UNIT 126M	3003930250	18	29N	07W	FRC PC UPHOLE RECOMPLETE
SAN JUAN 29-7 UNIT 072C	3003926650	26	29N	07W	FRC PC UPHOLE RECOMPLETE
SAN JUAN 29-7 UNIT 38B	3003929725	4	29N	07W	FRC UPHOLE RECOMPLETE

**Sidetrack/Reentry:** Hilcorp does not anticipate any sidetrack/reentry projects in the San Juan 29-7 Unit during 2026.

**Plug Back Program:** Hilcorp does not anticipate any plug-back projects in the San Juan 29-7 Unit during 2026.

**Conversion Program:** Hilcorp does not anticipate any conversion projects in the San Juan 29-7 Unit during 2026.

**Plugging & Abandonment Program:** Hilcorp does not anticipate any P&A projects in the San Juan 29-7 Unit during 2026.

**Participating Areas**

**Paying Well Determination Planned:** Hilcorp does not anticipate submitting any Paying Well Determinations in 2026.

**PA Application Planned:** Hilcorp does not anticipate submitting any PA applications in 2026.

**Surface Disturbing Activities:** Hilcorp does not anticipate new disturbance in 2026.

**Water Use:** Hilcorp anticipates two (2) recompletions and five (5) new drills in 2026.

Fresh Water

Drilling: N/A

Completion: Hilcorp anticipates using approximately 22,950 barrels for recompletions and completion of the new drills.

Fresh Water Storage

Drilling: N/A

Completion: N/A

Water Transfer

Water will be trucked to each recompletion and new drill. No water transfers, poseidon tanks, or lay flat water lines will be utilized.

**Disposal:**

2026 Water Disposal Estimate (based on 2025)

Facility	Total (BBL)	Daily Avg (BPD)	Mode of Transport (Piped, Trucked, Both)
N/A	N/A	N/A	N/A

**HILCORP ENERGY COMPANY - OPERATOR  
EXHIBIT A  
WELLS ASSOCIATED WITH THE SAN JUAN 29-7 UNIT  
RIO ARRIBA COUNTY, NEW MEXICO**

Well Name	Well No.	API	State Well Classification	Well Status	Reservoir	OCD Lease Type	Reporting Serial
SAN JUAN 29-7 UNIT	91	3003907635	Gas	PROD	MESAVERDE	State	MV PA - NMNM78417A
SAN JUAN 29-7 UNIT	92	3003907600	Gas	PROD	PICTURED CLIFFS	State	PC PA - NMNM78417C
SAN JUAN 29-7 UNIT	32A	3003922064	Gas	PROD	DAKOTA	State	DK PA - NMNM78417B
SAN JUAN 29-7 UNIT	32A	3003922064	Gas	PROD	MESAVERDE	State	MV PA - NMNM78417A
SAN JUAN 29-7 UNIT	32	3003907480	Gas	PROD	MESAVERDE	State	MV PA - NMNM78417A
SAN JUAN 29-7 UNIT	32E	3003922411	Gas	PROD	MESAVERDE	State	DK PA - NMNM78417B
SAN JUAN 29-7 UNIT	32E	3003922411	Gas	PROD	DAKOTA	State	DK PA - NMNM78417B
SAN JUAN 29-7 UNIT	93B	3003926047	Gas	PROD	MESAVERDE	State	MV PA - NMNM78417A
SAN JUAN 29-7 UNIT	47B	3003925622	Gas	PROD	MESAVERDE	State	MV PA - NMNM78417A
SAN JUAN 29-7 UNIT	582	3003924830	Gas	PROD	FRUITLAND COAL	State	FC PA - NMNM78417D
SAN JUAN 29-7 UNIT	129M	3003925592	Gas	PROD	DAKOTA	State	DK PA - NMNM78417B
SAN JUAN 29-7 UNIT	129M	3003925592	Gas	PROD	MESAVERDE	State	MV PA - NMNM78417A
SAN JUAN 29-7 UNIT	129N	3003931087	Gas	PROD	MESAVERDE	State	MV PA - NMNM78417A
SAN JUAN 29-7 UNIT	175	3003926617	Gas	PROD	PICTURED CLIFFS	State	PC PA - NMNM78417C
SAN JUAN 29-7 UNIT	181	3003926995	Gas	PROD	PICTURED CLIFFS	State	PC PA - NMNM78417C
SAN JUAN 29-7 UNIT	190	3003927333	Gas	PROD	FRUITLAND COAL	State	FC PA - NMNM78417D
SAN JUAN 29-7 UNIT	190	3003927333	Gas	PROD	PICTURED CLIFFS	State	PC PA - NMNM78417C
SAN JUAN 29-7 UNIT	91B	3003925826	Gas	PROD	MESAVERDE	State	MV PA - NMNM78417A
SAN JUAN 29-7 UNIT	92A	3003925613	Gas	PROD	DAKOTA	State	DK PA - NMNM78417B
SAN JUAN 29-7 UNIT	92A	3003925613	Gas	PROD	MESAVERDE	State	MV PA - NMNM78417A,
SAN JUAN 29-7 UNIT	92B	3003925825	Gas	PROD	MESAVERDE	State	MV PA - NMNM78417A
SAN JUAN 29-7 UNIT	92M	3003926809	Gas	PROD	DAKOTA	State	DK PA - NMNM78417B
SAN JUAN 29-7 UNIT	92M	3003926809	Gas	PROD	MESAVERDE	State	MV PA - NMNM78417A

Well Name	Well No.	API	State Well Classification	Well Status	Reservoir	OCD Lease Type	Reporting Serial
SAN JUAN 29-7 UNIT	92R	3003925342	Gas	PROD	MESAVERDE	State	MV PA - NMNM78417A
SAN JUAN 29-7 UNIT	92R	3003925342	Gas	PROD	FRUITLAND COAL	State	FC PA - NMNM78417D
SAN JUAN 29-7 UNIT	93R	3003925264	Gas	PROD	MESAVERDE	State	MV PA - NMNM78417A
SAN JUAN 29-7 UNIT	167	3003926061	Gas	PROD	PICTURED CLIFFS	State	PC PA - NMNM78417C
SAN JUAN 29-7 UNIT	167	3003926061	Gas	PROD	FRUITLAND COAL	State	FC PA - NMNM78417D
SAN JUAN 29-7 UNIT	31A	3003922065	Gas	PROD	DAKOTA	State	DK PA - NMNM78417B
SAN JUAN 29-7 UNIT	31A	3003922065	Gas	PROD	MESAVERDE	State	MV PA - NMNM78417A
SAN JUAN 29-7 UNIT	31B	3003926046	Gas	PROD	MESAVERDE	State	MV PA - NMNM78417A
SAN JUAN 29-7 UNIT	31C	3003926048	Gas	PROD	MESAVERDE	State	MV PA - NMNM78417A
SAN JUAN 29-7 UNIT	31E	3003923601	Gas	PROD	MESAVERDE	State	DK PA - NMNM78417B
SAN JUAN 29-7 UNIT	31E	3003923601	Gas	PROD	DAKOTA	State	DK PA - NMNM78417B
SAN JUAN 29-7 UNIT	32B	3003926021	Gas	PROD	MESAVERDE	State	MV PA - NMNM78417A
SAN JUAN 29-7 UNIT	32N	3003930563	Gas	PROD	DAKOTA	State	DK PA - NMNM78417B
SAN JUAN 29-7 UNIT	32N	3003930563	Gas	PROD	MESAVERDE	State	MV PA - NMNM78417A
SAN JUAN 29-7 UNIT	31	3003907496	Gas	PROD	MESAVERDE	State	MV PA - NMNM78417A
SAN JUAN 29-7 UNIT	47	3003907709	Gas	PROD	MESAVERDE	State	MV PA - NMNM78417A
SAN JUAN 29-7 UNIT	532	3003924624	Gas	PROD	FRUITLAND COAL	State	FC PA - NMNM78417D
SAN JUAN 29-7 UNIT	47C	3003926074	Gas	PROD	MESAVERDE	State	MV PA - NMNM78417A
SAN JUAN 29-7 UNIT	93A	3003925478	Gas	PROD	PICTURED CLIFFS	State	MV PA - NMNM78417A
SAN JUAN 29-7 UNIT	93A	3003925478	Gas	PROD	MESAVERDE	State	MV PA - NMNM78417A
SAN JUAN 29-7 UNIT	93A	3003925478	Gas	PROD	MESAVERDE	State	MV PA - NMNM78417A
SAN JUAN 29-7 UNIT	93A	3003925478	Gas	PROD	PICTURED CLIFFS	State	MV PA - NMNM78417A
SAN JUAN 29-7 UNIT	193	3003927574	Gas	PROD	PICTURED CLIFFS	State	PC PA - NMNM78417C
SAN JUAN 29-7 UNIT	193	3003927574	Gas	PROD	FRUITLAND COAL	State	PC PA - NMNM78417C
SAN JUAN 29-7 UNIT	55	3003907493	Gas	PROD	MESAVERDE	State	MV PA - NMNM78417A
SAN JUAN 29-7 UNIT	68	3003907475	Gas	PROD	MESAVERDE	State	MV PA - NMNM78417A
SAN JUAN 29-7 UNIT	105E	3003930519	Gas	PROD	DAKOTA	State	DK PA - NMNM78417B

Well Name	Well No.	API	State Well Classification	Well Status	Reservoir	OCD Lease Type	Reporting Serial
SAN JUAN 29-7 UNIT	105E	3003930519	Gas	PROD	MESAVERDE	State	MV PA - NMNM78417A
SAN JUAN 29-7 UNIT	105M	3003930225	Gas	PROD	DAKOTA	State	Lease Basis - NMNM78413A, Lease Basis - NMNM78413B
SAN JUAN 29-7 UNIT	105M	3003930225	Gas	PROD	MESAVERDE	State	Lease Basis - NMNM78413A, Lease Basis - NMNM78413B
SAN JUAN 29-7 UNIT	106M	3003923940	Gas	PROD	DAKOTA	State	DK PA - NMNM78417B
SAN JUAN 29-7 UNIT	106M	3003923940	Gas	PROD	MESAVERDE	State	MV PA - NMNM78417A
SAN JUAN 29-7 UNIT	106N	3003926790	Gas	PROD	DAKOTA	State	DK PA - NMNM78417B
SAN JUAN 29-7 UNIT	106N	3003926790	Gas	PROD	MESAVERDE	State	MV PA - NMNM78417A
SAN JUAN 29-7 UNIT	180	3003926830	Gas	PROD	PICTURED CLIFFS	State	PC PA - NMNM78417C
SAN JUAN 29-7 UNIT	55A	3003921616	Gas	PROD	MESAVERDE	State	MV PA - NMNM78417A
SAN JUAN 29-7 UNIT	105	3003920616	Gas	PROD	MESAVERDE	State	DK PA - NMNM78417B
SAN JUAN 29-7 UNIT	105	3003920616	Gas	PROD	DAKOTA	State	DK PA - NMNM78417B
SAN JUAN 29-7 UNIT	47A	3003921613	Gas	PROD	FRUITLAND COAL	State	MV PA - NMNM78417A
SAN JUAN 29-7 UNIT	47A	3003921613	Gas	PROD	MESAVERDE	State	MV PA - NMNM78417A
SAN JUAN 29-7 UNIT	93C	3003931161	Gas	PROD	MESAVERDE	State	MV PA - NMNM78417A
SAN JUAN 29-7 UNIT	93C	3003931161	Gas	PROD	DAKOTA	State	DK COM - NMNM78417X
SAN JUAN 29-7 UNIT	156	3003925698	Gas	PROD	PICTURED CLIFFS	FEE	PC PA - NMNM78417C
SAN JUAN 29-7 UNIT	160	3003925848	Gas	PROD	PICTURED CLIFFS	FEE	PC PA - NMNM78417C
SAN JUAN 29-7 UNIT	178	3003927429	Gas	PROD	PICTURED CLIFFS	FEE	PC PA - NMNM78417C
SAN JUAN 29-7 UNIT	179	3003927286	Gas	PROD	PICTURED CLIFFS	FEE	PC PA - NMNM78417C
SAN JUAN 29-7 UNIT	38	3003907665	Gas	PROD	MESAVERDE	FEE	MV PA - NMNM78417A
SAN JUAN 29-7 UNIT	38A	3003921615	Gas	PROD	MESAVERDE	FEE	MV PA - NMNM78417A
SAN JUAN 29-7 UNIT	538	3003924809	Gas	PROD	FRUITLAND COAL	FEE	FC PA - NMNM78417D
SAN JUAN 29-7 UNIT	53B	3003925899	Gas	PROD	MESAVERDE	FEE	MV PA - NMNM78417A

Well Name	Well No.	API	State Well Classification	Well Status	Reservoir	OCD Lease Type	Reporting Serial
SAN JUAN 29-7 UNIT	54	3003907602	Gas	PROD	MESAVERDE	FEE	MV PA - NMNM78417A
SAN JUAN 29-7 UNIT	545	3003924829	Gas	PROD	FRUITLAND COAL	FEE	FC PA - NMNM78417D
SAN JUAN 29-7 UNIT	545S	3003929272	Gas	PROD	FRUITLAND COAL	FEE	FC PA - NMNM78417D
SAN JUAN 29-7 UNIT	54C	3003927430	Gas	PROD	MESAVERDE	FEE	MV PA - NMNM78417A
SAN JUAN 29-7 UNIT	550	3003924842	Gas	PROD	FRUITLAND COAL	FEE	FC PA - NMNM78417D
SAN JUAN 29-7 UNIT	562	3003924904	Gas	PROD	FRUITLAND COAL	FEE	FC PA - NMNM78417D
SAN JUAN 29-7 UNIT	563S	3003927428	Gas	PROD	FRUITLAND COAL	FEE	FC PA - NMNM78417D
SAN JUAN 29-7 UNIT	56B	3003925815	Gas	PROD	MESAVERDE	FEE	MV PA - NMNM78417A
SAN JUAN 29-7 UNIT	57B	3003925633	Gas	PROD	MESAVERDE	FEE	MV PA - NMNM78417A
SAN JUAN 29-7 UNIT	58	3003907556	Gas	PROD	MESAVERDE	FEE	MV PA - NMNM78417A
SAN JUAN 29-7 UNIT	585	3003930124	Gas	PROD	FRUITLAND COAL	FEE	FC PA - NMNM78417D
SAN JUAN 29-7 UNIT	585	3003930124	Gas	PROD	PICTURED CLIFFS	FEE	PC PA - NMNM78417C
SAN JUAN 29-7 UNIT	58A	3003925617	Gas	PROD	DAKOTA	FEE	DK PA - NMNM78417B
SAN JUAN 29-7 UNIT	58A	3003925617	Gas	PROD	MESAVERDE	FEE	MV PA - NMNM78417A
SAN JUAN 29-7 UNIT	58M	3003926618	Gas	PROD	MESAVERDE	FEE	MV PA - NMNM78417A
SAN JUAN 29-7 UNIT	58M	3003926618	Gas	PROD	DAKOTA	FEE	DK PA - NMNM78417B
SAN JUAN 29-7 UNIT	58N	3003930314	Gas	PROD	MESAVERDE	FEE	MV PA - NMNM78417A
SAN JUAN 29-7 UNIT	58N	3003930314	Gas	PROD	DAKOTA	FEE	DK PA - NMNM78417B
SAN JUAN 29-7 UNIT	62A	3003925428	Gas	PROD	FRUITLAND COAL	FEE	MV PA - NMNM78417A
SAN JUAN 29-7 UNIT	62A	3003925428	Gas	PROD	MESAVERDE	FEE	MV PA - NMNM78417A
SAN JUAN 29-7 UNIT	63A	3003925479	Gas	PROD	MESAVERDE	FEE	MV PA - NMNM78417A
SAN JUAN 29-7 UNIT	64A	3003921614	Gas	PROD	MESAVERDE	FEE	MV PA - NMNM78417A
SAN JUAN 29-7 UNIT	67	3003907565	Gas	PROD	MESAVERDE	FEE	MV PA - NMNM78417A
SAN JUAN 29-7 UNIT	67N	3003930698	Gas	PROD	DAKOTA	FEE	DK PA - NMNM78417B
SAN JUAN 29-7 UNIT	67N	3003930698	Gas	PROD	MESAVERDE	FEE	MV PA - NMNM78417A
SAN JUAN 29-7 UNIT	71	3003907590	Gas	PROD	MESAVERDE	FEE	MV PA - NMNM78417A
SAN JUAN 29-7 UNIT	71B	3003929589	Gas	PROD	DAKOTA	FEE	Lease Basis - NMNM116787

Well Name	Well No.	API	State Well Classification	Well Status	Reservoir	OCD Lease Type	Reporting Serial
SAN JUAN 29-7 UNIT	71B	3003929589	Gas	PROD	MESAVERDE	FEE	MV PA - NMNM78417A
SAN JUAN 29-7 UNIT	72	3003907554	Gas	PROD	MESAVERDE	FEE	MV PA - NMNM78417A
SAN JUAN 29-7 UNIT	73A	3003925429	Gas	PROD	MESAVERDE	FEE	MV PA - NMNM78417A
SAN JUAN 29-7 UNIT	73C	3003930582	Gas	PROD	DAKOTA	FEE	DK PA - NMNM78417B
SAN JUAN 29-7 UNIT	73C	3003930582	Gas	PROD	MESAVERDE	FEE	MV PA - NMNM78417A
SAN JUAN 29-7 UNIT	75	3003907583	Gas	PROD	MESAVERDE	FEE	MV PA - NMNM78417A
SAN JUAN 29-7 UNIT	75A	3003925616	Gas	PROD	MESAVERDE	FEE	MV PA - NMNM78417A
SAN JUAN 29-7 UNIT	75A	3003925616	Gas	PROD	DAKOTA	FEE	Lease Basis - NMNM99306
SAN JUAN 29-7 UNIT	75M	3003930866	Gas	PROD	DAKOTA	FEE	Lease Basis - NMNM99306
SAN JUAN 29-7 UNIT	75M	3003930866	Gas	PROD	MESAVERDE	FEE	MV PA - NMNM78417A
SAN JUAN 29-7 UNIT	80	3003907657	Gas	PROD	MESAVERDE	FEE	MV PA - NMNM78417A
SAN JUAN 29-7 UNIT	80A	3003923882	Gas	PROD	MESAVERDE	FEE	MV PA - NMNM78417A
SAN JUAN 29-7 UNIT	62B	3003926073	Gas	PROD	MESAVERDE	Fee	MV PA - NMNM78417A
SAN JUAN 29-7 UNIT	72B	3003926042	Gas	PROD	MESAVERDE	Federal	MV PA - NMNM78417A
SAN JUAN 29-7 UNIT	185	3003927484	Gas	PROD	PICTURED CLIFFS	Federal	PC PA - NMNM78417C
SAN JUAN 29-7 UNIT	540	3003925008	Gas	PROD	FRUITLAND COAL	Federal	FC PA - NMNM78417D
SAN JUAN 29-7 UNIT	63	3003907668	Gas	PROD	MESAVERDE	Federal	MV PA - NMNM78417A
SAN JUAN 29-7 UNIT	63B	3003926779	Gas	PROD	MESAVERDE	Federal	MV PA - NMNM78417A
SAN JUAN 29-7 UNIT	553	3003924895	Gas	PROD	FRUITLAND COAL	Federal	FC PA - NMNM78417D
SAN JUAN 29-7 UNIT	62	3003907633	Gas	PROD	MESAVERDE	Federal	MV PA - NMNM78417A
SAN JUAN 29-7 UNIT	62C	3003929991	Gas	PROD	MESAVERDE	Federal	MV PA - NMNM78417A
SAN JUAN 29-7 UNIT	62C	3003929991	Gas	PROD	DAKOTA	Federal	Lease Basis - NMNM117933
SAN JUAN 29-7 UNIT	102A	3003925440	Gas	PROD	MESAVERDE	Federal	MV PA - NMNM78417A
SAN JUAN 29-7 UNIT	102B	3003931126	Gas	PROD	MESAVERDE	Federal	MV PA - NMNM78417A
SAN JUAN 29-7 UNIT	102B	3003931126	Gas	PROD	DAKOTA	Federal	DK PA - NMNM78417B
SAN JUAN 29-7 UNIT	102C	3003931095	Gas	PROD	DAKOTA	Federal	DK PA - NMNM78417B
SAN JUAN 29-7 UNIT	102C	3003931095	Gas	PROD	MESAVERDE	Federal	MV PA - NMNM78417A

Well Name	Well No.	API	State Well Classification	Well Status	Reservoir	OCD Lease Type	Reporting Serial
SAN JUAN 29-7 UNIT	102R	3003920514	Gas	PROD	MESAVERDE	Federal	MV PA - NMNM78417A
SAN JUAN 29-7 UNIT	194	3003929459	Gas	PROD	FRUITLAND COAL	Federal	FC PA - NMNM78417D
SAN JUAN 29-7 UNIT	194	3003929459	Gas	PROD	PICTURED CLIFFS	Federal	Lease Basis - NMSF077842
SAN JUAN 29-7 UNIT	56	3003960102	Gas	PROD	MESAVERDE	Federal	MV PA - NMNM78417A
SAN JUAN 29-7 UNIT	56A	3003923953	Gas	PROD	MESAVERDE	Federal	MV PA - NMNM78417A
SAN JUAN 29-7 UNIT	56C	3003931116	Gas	PROD	MESAVERDE	Federal	MV PA - NMNM78417A
SAN JUAN 29-7 UNIT	56C	3003931116	Gas	PROD	DAKOTA	Federal	Lease Basis - NMNM129844
SAN JUAN 29-7 UNIT	585S	3003929682	Gas	PROD	PICTURED CLIFFS	Federal	PC PA - NMNM78417C
SAN JUAN 29-7 UNIT	585S	3003929682	Gas	PROD	FRUITLAND COAL	Federal	FC PA - NMNM78417D
SAN JUAN 29-7 UNIT	163	3003925892	Gas	PROD	PICTURED CLIFFS	Federal	PC PA - NMNM78417C
SAN JUAN 29-7 UNIT	166	3003925897	Gas	PROD	PICTURED CLIFFS	Federal	PC PA - NMNM78417C
SAN JUAN 29-7 UNIT	172	3003926746	Gas	PROD	PICTURED CLIFFS	Federal	PC PA - NMNM78417C
SAN JUAN 29-7 UNIT	176	3003926722	Gas	PROD	FRUITLAND COAL	Federal	FC PA - NMNM78417D
SAN JUAN 29-7 UNIT	176	3003926722	Gas	PROD	PICTURED CLIFFS	Federal	PC PA - NMNM78417C
SAN JUAN 29-7 UNIT	177	3003926723	Gas	PROD	PICTURED CLIFFS	Federal	PC PA - NMNM78417C
SAN JUAN 29-7 UNIT	35A	3003921627	Gas	PROD	MESAVERDE	Federal	MV PA - NMNM78417A
SAN JUAN 29-7 UNIT	35C	3003925880	Gas	PROD	MESAVERDE	Federal	MV PA - NMNM78417A
SAN JUAN 29-7 UNIT	4	3003907642	Gas	PROD	MESAVERDE	Federal	MV PA - NMNM78417A
SAN JUAN 29-7 UNIT	4C	3003929635	Gas	PROD	MESAVERDE	Federal	MV PA - NMNM78417A
SAN JUAN 29-7 UNIT	4C	3003929635	Gas	PROD	DAKOTA	Federal	Lease Basis - NMNM116827
SAN JUAN 29-7 UNIT	537	3003925021	Gas	PROD	FRUITLAND COAL	Federal	FC PA - NMNM78417D
SAN JUAN 29-7 UNIT	63C	3003927710	Gas	PROD	DAKOTA	Federal	DK PA - NMNM78417B
SAN JUAN 29-7 UNIT	63C	3003927710	Gas	PROD	MESAVERDE	Federal	MV PA - NMNM78417A
SAN JUAN 29-7 UNIT	65	3003907593	Gas	PROD	MESAVERDE	Federal	MV PA - NMNM78417A
SAN JUAN 29-7 UNIT	66A	3003925664	Gas	PROD	DAKOTA	Federal	DK PA - NMNM78417B
SAN JUAN 29-7 UNIT	66A	3003925664	Gas	PROD	MESAVERDE	Federal	MV PA - NMNM78417A
SAN JUAN 29-7 UNIT	66B	3003926806	Gas	PROD	MESAVERDE	Federal	MV PA - NMNM78417A

Well Name	Well No.	API	State Well Classification	Well Status	Reservoir	OCD Lease Type	Reporting Serial
SAN JUAN 29-7 UNIT	67A	3003925644	Gas	PROD	MESAVERDE	Federal	MV PA - NMNM78417A
SAN JUAN 29-7 UNIT	67A	3003925644	Gas	PROD	DAKOTA	Federal	DK PA - NMNM78417B
SAN JUAN 29-7 UNIT	140	3003924142	Gas	PROD	DAKOTA	Federal	DK PA - NMNM78417B
SAN JUAN 29-7 UNIT	140	3003924142	Gas	PROD	MESAVERDE	Federal	MV PA - NMNM78417A
SAN JUAN 29-7 UNIT	140N	3003927036	Gas	PROD	MESAVERDE	Federal	MV PA - NMNM78417A
SAN JUAN 29-7 UNIT	140N	3003927036	Gas	PROD	DAKOTA	Federal	DK PA - NMNM78417B
SAN JUAN 29-7 UNIT	140P	3003931260	Gas	PROD	MESAVERDE	Federal	MV PA - NMNM78417A
SAN JUAN 29-7 UNIT	140P	3003931260	Gas	PROD	DAKOTA	Federal	DK PA - NMNM78417B
SAN JUAN 29-7 UNIT	141	3003924145	Gas	PROD	DAKOTA	Federal	DK PA - NMNM78417B
SAN JUAN 29-7 UNIT	141M	3003930412	Gas	PROD	DAKOTA	Federal	DK PA - NMNM78417B
SAN JUAN 29-7 UNIT	141M	3003930412	Gas	PROD	MANCOS	Federal	Lease Basis - NMSF078423
SAN JUAN 29-7 UNIT	141M	3003930412	Gas	PROD	MESAVERDE	Federal	MV PA - NMNM78417A
SAN JUAN 29-7 UNIT	182	3003927788	Gas	PROD	PICTURED CLIFFS	Federal	PC PA - NMNM78417C
SAN JUAN 29-7 UNIT	189	3003927313	Gas	PROD	FRUITLAND COAL	Federal	FC PA - NMNM78417D
SAN JUAN 29-7 UNIT	189	3003927313	Gas	PROD	PICTURED CLIFFS	Federal	PC PA - NMNM78417C
SAN JUAN 29-7 UNIT	29	3003907615	Gas	PROD	MESAVERDE	Federal	MV PA - NMNM78417A
SAN JUAN 29-7 UNIT	29A	3003923965	Gas	PROD	MESAVERDE	Federal	MV PA - NMNM78417A
SAN JUAN 29-7 UNIT	29B	3003930211	Gas	PROD	MESAVERDE	Federal	MV PA - NMNM78417A
SAN JUAN 29-7 UNIT	29B	3003930211	Gas	PROD	DAKOTA	Federal	DK PA - NMNM78417B
SAN JUAN 29-7 UNIT	35	3003907644	Gas	PROD	MESAVERDE	Federal	MV PA - NMNM78417A
SAN JUAN 29-7 UNIT	35B	3003925912	Gas	PROD	MESAVERDE	Federal	MV PA - NMNM78417A
SAN JUAN 29-7 UNIT	43	3003907661	Gas	PROD	MESAVERDE	Federal	MV PA - NMNM78417A
SAN JUAN 29-7 UNIT	44	3003907630	Gas	PROD	MESAVERDE	Federal	MV PA - NMNM78417A
SAN JUAN 29-7 UNIT	44A	3003921980	Gas	PROD	MESAVERDE	Federal	MV PA - NMNM78417A
SAN JUAN 29-7 UNIT	44A	3003921980	Gas	PROD	DAKOTA	Federal	DK PA - NMNM78417B
SAN JUAN 29-7 UNIT	44B	3003926081	Gas	PROD	MESAVERDE	Federal	MV PA - NMNM78417A
SAN JUAN 29-7 UNIT	44C	3003926051	Gas	PROD	PICTURED CLIFFS	Federal	PC PA - NMNM78417C

Well Name	Well No.	API	State Well Classification	Well Status	Reservoir	OCD Lease Type	Reporting Serial
SAN JUAN 29-7 UNIT	44C	3003926051	Gas	PROD	MESAVERDE	Federal	MV PA - NMNM78417A
SAN JUAN 29-7 UNIT	44E	3003929963	Gas	PROD	DAKOTA	Federal	DK PA - NMNM78417B
SAN JUAN 29-7 UNIT	48	3003907669	Gas	PROD	MESAVERDE	Federal	MV PA - NMNM78417A
SAN JUAN 29-7 UNIT	48A	3003921626	Gas	PROD	MESAVERDE	Federal	MV PA - NMNM78417A
SAN JUAN 29-7 UNIT	48B	3003926138	Gas	PROD	MESAVERDE	Federal	MV PA - NMNM78417A
SAN JUAN 29-7 UNIT	519	3003925268	Gas	PROD	FRUITLAND COAL	Federal	FC PA - NMNM78417D
SAN JUAN 29-7 UNIT	519	3003925268	Gas	PROD	PICTURED CLIFFS	Federal	PC PA - NMNM78417C
SAN JUAN 29-7 UNIT	520	3003925635	Gas	PROD	FRUITLAND COAL	Federal	FC PA - NMNM78417D
SAN JUAN 29-7 UNIT	520	3003925635	Gas	PROD	PICTURED CLIFFS	Federal	PC PA - NMNM78417C
SAN JUAN 29-7 UNIT	520S	3003929816	Gas	PROD	FRUITLAND COAL	Federal	FC PA - NMNM78417D
SAN JUAN 29-7 UNIT	520S	3003929816	Gas	PROD	PICTURED CLIFFS	Federal	PC PA - NMNM78417C
SAN JUAN 29-7 UNIT	521	3003924866	Gas	PROD	FRUITLAND COAL	Federal	FC PA - NMNM78417D
SAN JUAN 29-7 UNIT	521S	3003929457	Gas	PROD	FRUITLAND COAL	Federal	FC PA - NMNM78417D
SAN JUAN 29-7 UNIT	534	3003925240	Gas	PROD	FRUITLAND COAL	Federal	FC PA - NMNM78417D
SAN JUAN 29-7 UNIT	549S	3003929744	Gas	PROD	FRUITLAND COAL	Federal	FC PA - NMNM78417D
SAN JUAN 29-7 UNIT	549S	3003929744	Gas	PROD	PICTURED CLIFFS	Federal	PC PA - NMNM78417C
SAN JUAN 29-7 UNIT	54A	3003923952	Gas	PROD	MESAVERDE	Federal	MV PA - NMNM78417A
SAN JUAN 29-7 UNIT	54B	3003925858	Gas	PROD	MESAVERDE	Federal	MV PA - NMNM78417A
SAN JUAN 29-7 UNIT	550S	3003929202	Gas	PROD	DAKOTA	Federal	Lease Basis - NMNM116728
SAN JUAN 29-7 UNIT	550S	3003929202	Gas	PROD	MESAVERDE	Federal	Lease Basis - NMNM116728
SAN JUAN 29-7 UNIT	57A	3003925567	Gas	PROD	DAKOTA	Federal	DK PA - NMNM78417B
SAN JUAN 29-7 UNIT	57A	3003925567	Gas	PROD	MESAVERDE	Federal	MV PA - NMNM78417A
SAN JUAN 29-7 UNIT	57C	3003925857	Gas	PROD	MESAVERDE	Federal	MV PA - NMNM78417A
SAN JUAN 29-7 UNIT	57E	3003930353	Gas	PROD	MESAVERDE	Federal	MV PA - NMNM78417A
SAN JUAN 29-7 UNIT	57E	3003930353	Gas	PROD	DAKOTA	Federal	DK PA - NMNM78417B
SAN JUAN 29-7 UNIT	587	3003930384	Gas	PROD	FRUITLAND COAL	Federal	FC PA - NMNM78417D
SAN JUAN 29-7 UNIT	588	3003930383	Gas	PROD	PICTURED CLIFFS	Federal	PC PA - NMNM78417C

Well Name	Well No.	API	State Well Classification	Well Status	Reservoir	OCD Lease Type	Reporting Serial
SAN JUAN 29-7 UNIT	588	3003930383	Gas	PROD	FRUITLAND COAL	Federal	Lease Basis - NMSF078423
SAN JUAN 29-7 UNIT	64	3003907662	Gas	PROD	MESAVERDE	Federal	MV PA - NMNM78417A
SAN JUAN 29-7 UNIT	64B	3003925649	Gas	PROD	MESAVERDE	Federal	MV PA - NMNM78417A
SAN JUAN 29-7 UNIT	64C	3003925648	Gas	PROD	MESAVERDE	Federal	MV PA - NMNM78417A
SAN JUAN 29-7 UNIT	80B	3003927021	Gas	PROD	MESAVERDE	Federal	MV PA - NMNM78417A
SAN JUAN 29-7 UNIT	80B	3003927021	Gas	PROD	PICTURED CLIFFS	Federal	PC PA - NMNM78417C
SAN JUAN 29-7 UNIT	80B	3003927021	Gas	PROD	DAKOTA	Federal	DK PA - NMNM78417B
SAN JUAN 29-7 UNIT	80M	3003927680	Gas	PROD	DAKOTA	Federal	DK PA - NMNM78417B
SAN JUAN 29-7 UNIT	80M	3003927680	Gas	PROD	MESAVERDE	Federal	MV PA - NMNM78417A
SAN JUAN 29-7 UNIT	86	3003907617	Gas	PROD	MESAVERDE	Federal	MV PA - NMNM78417A
SAN JUAN 29-7 UNIT	86A	3003922629	Gas	PROD	DAKOTA	Federal	DK PA - NMNM78417B
SAN JUAN 29-7 UNIT	86A	3003922629	Gas	PROD	MESAVERDE	Federal	MV PA - NMNM78417A
SAN JUAN 29-7 UNIT	86M	3003929696	Gas	PROD	MESAVERDE	Federal	MV PA - NMNM78417A
SAN JUAN 29-7 UNIT	86M	3003929696	Gas	PROD	DAKOTA	Federal	DK PA - NMNM78417B
SAN JUAN 29-7 UNIT	86N	3003931000	Gas	PROD	DAKOTA	Federal	DK PA - NMNM78417B
SAN JUAN 29-7 UNIT	86N	3003931000	Gas	PROD	MESAVERDE	Federal	MV PA - NMNM78417A
SAN JUAN 29-7 UNIT	128M	3003925652	Gas	PROD	DAKOTA	Federal	DK PA - NMNM78417B
SAN JUAN 29-7 UNIT	128M	3003925652	Gas	PROD	MESAVERDE	Federal	MV PA - NMNM78417A
SAN JUAN 29-7 UNIT	130	3003923776	Gas	PROD	DAKOTA	Federal	DK PA - NMNM78417B
SAN JUAN 29-7 UNIT	130M	3003925684	Gas	PROD	MESAVERDE	Federal	MV PA - NMNM78417A
SAN JUAN 29-7 UNIT	130M	3003925684	Gas	PROD	DAKOTA	Federal	DK PA - NMNM78417B
SAN JUAN 29-7 UNIT	147	3003925499	Gas	PROD	PICTURED CLIFFS	Federal	PC PA - NMNM78417C
SAN JUAN 29-7 UNIT	186	3003927425	Gas	PROD	FRUITLAND COAL	Federal	FC PA - NMNM78417D
SAN JUAN 29-7 UNIT	186	3003927425	Gas	PROD	PICTURED CLIFFS	Federal	PC PA - NMNM78417C
SAN JUAN 29-7 UNIT	191	3003927474	Gas	PROD	PICTURED CLIFFS	Federal	PC PA - NMNM78417C
SAN JUAN 29-7 UNIT	191	3003927474	Gas	PROD	FRUITLAND COAL	Federal	FC PA - NMNM78417D

Well Name	Well No.	API	State Well Classification	Well Status	Reservoir	OCD Lease Type	Reporting Serial
SAN JUAN 29-7 UNIT	197	3003929745	Gas	PROD	FRUITLAND COAL	Federal	Lease Basis - NMNM117656, Lease Basis - NMNM117657
SAN JUAN 29-7 UNIT	197	3003929745	Gas	PROD	PICTURED CLIFFS	Federal	Lease Basis - NMNM117656, Lease Basis - NMNM117657
SAN JUAN 29-7 UNIT	40	3003907555	Gas	PROD	MESAVERDE	Federal	MV PA - NMNM78417A
SAN JUAN 29-7 UNIT	40E	3003923957	Gas	PROD	DAKOTA	Federal	DK PA - NMNM78417B
SAN JUAN 29-7 UNIT	45	3003907561	Gas	PROD	MESAVERDE	Federal	MV PA - NMNM78417A
SAN JUAN 29-7 UNIT	45A	3003923955	Gas	PROD	MESAVERDE	Federal	MV PA - NMNM78417A
SAN JUAN 29-7 UNIT	45A	3003923955	Gas	PROD	DAKOTA	Federal	DK PA - NMNM78417B
SAN JUAN 29-7 UNIT	45B	3003926155	Gas	PROD	MESAVERDE	Federal	MV PA - NMNM78417A
SAN JUAN 29-7 UNIT	45E	3003923956	Gas	PROD	DAKOTA	Federal	DK PA - NMNM78417B
SAN JUAN 29-7 UNIT	49	3003907598	Gas	PROD	MESAVERDE	Federal	MV PA - NMNM78417A
SAN JUAN 29-7 UNIT	49A	3003921916	Gas	PROD	MESAVERDE	Federal	MV PA - NMNM78417A
SAN JUAN 29-7 UNIT	49A	3003921916	Gas	PROD	DAKOTA	Federal	DK PA - NMNM78417B
SAN JUAN 29-7 UNIT	49M	3003929763	Gas	PROD	DAKOTA	Federal	DK PA - NMNM78417B
SAN JUAN 29-7 UNIT	49M	3003929763	Gas	PROD	MESAVERDE	Federal	MV PA - NMNM78417A
SAN JUAN 29-7 UNIT	49N	3003930230	Gas	PROD	MESAVERDE	Federal	MV PA - NMNM78417A
SAN JUAN 29-7 UNIT	49N	3003930230	Gas	PROD	DAKOTA	Federal	DK PA - NMNM78417B
SAN JUAN 29-7 UNIT	50	3003907586	Gas	PROD	MESAVERDE	Federal	MV PA - NMNM78417A
SAN JUAN 29-7 UNIT	50A	3003925643	Gas	PROD	DAKOTA	Federal	DK PA - NMNM78417B
SAN JUAN 29-7 UNIT	50A	3003925643	Gas	PROD	MESAVERDE	Federal	MV PA - NMNM78417A
SAN JUAN 29-7 UNIT	50B	3003926072	Gas	PROD	MESAVERDE	Federal	MV PA - NMNM78417A
SAN JUAN 29-7 UNIT	50M	3003929796	Gas	PROD	DAKOTA	Federal	DK PA - NMNM78417B
SAN JUAN 29-7 UNIT	50M	3003929796	Gas	PROD	MESAVERDE	Federal	MV PA - NMNM78417A
SAN JUAN 29-7 UNIT	51	3003907574	Gas	PROD	MESAVERDE	Federal	MV PA - NMNM78417A
SAN JUAN 29-7 UNIT	51B	3003925958	Gas	PROD	MESAVERDE	Federal	MV PA - NMNM78417A

Well Name	Well No.	API	State Well Classification	Well Status	Reservoir	OCD Lease Type	Reporting Serial
SAN JUAN 29-7 UNIT	526S	3003927659	Gas	PROD	PICTURED CLIFFS	Federal	PC PA - NMNM78417C
SAN JUAN 29-7 UNIT	526S	3003927659	Gas	PROD	FRUITLAND COAL	Federal	FC PA - NMNM78417D
SAN JUAN 29-7 UNIT	528S	3003929852	Gas	PROD	FRUITLAND COAL	Federal	Lease Basis - NMNM131798, Lease Basis - NMNM96695
SAN JUAN 29-7 UNIT	528S	3003929852	Gas	PROD	PICTURED CLIFFS	Federal	Lease Basis - NMNM131798, Lease Basis - NMNM96695
SAN JUAN 29-7 UNIT	53	3003907544	Gas	PROD	MESAVERDE	Federal	MV PA - NMNM78417A
SAN JUAN 29-7 UNIT	53M	3003930801	Gas	PROD	DAKOTA	Federal	DK PA - NMNM78417B
SAN JUAN 29-7 UNIT	53M	3003930801	Gas	PROD	MESAVERDE	Federal	MV PA - NMNM78417A
SAN JUAN 29-7 UNIT	586	3003930194	Gas	PROD	FRUITLAND COAL	Federal	FC PA - NMNM78417D
SAN JUAN 29-7 UNIT	586	3003930194	Gas	PROD	PICTURED CLIFFS	Federal	PC PA - NMNM78417C
SAN JUAN 29-7 UNIT	589	3003930403	Gas	PROD	FRUITLAND COAL	Federal	FC PA - NMNM78417D
SAN JUAN 29-7 UNIT	589	3003930403	Gas	PROD	PICTURED CLIFFS	Federal	PC PA - NMNM78417C
SAN JUAN 29-7 UNIT	59B	3003925970	Gas	PROD	MESAVERDE	Federal	MV PA - NMNM78417A
SAN JUAN 29-7 UNIT	65A	3003921917	Gas	PROD	DAKOTA	Federal	DK PA - NMNM78417B
SAN JUAN 29-7 UNIT	65A	3003921917	Gas	PROD	MESAVERDE	Federal	MV PA - NMNM78417A
SAN JUAN 29-7 UNIT	65M	3003930516	Gas	PROD	MESAVERDE	Federal	MV PA - NMNM78417A
SAN JUAN 29-7 UNIT	67M	3003930440	Gas	PROD	MESAVERDE	Federal	MV PA - NMNM78417A
SAN JUAN 29-7 UNIT	67M	3003930440	Gas	PROD	DAKOTA	Federal	DK PA - NMNM78417B
SAN JUAN 29-7 UNIT	73	3003907559	Gas	PROD	MESAVERDE	Federal	MV PA - NMNM78417A
SAN JUAN 29-7 UNIT	73B	3003926136	Gas	PROD	MESAVERDE	Federal	MV PA - NMNM78417A
SAN JUAN 29-7 UNIT	75N	3003930818	Gas	PROD	MESAVERDE	Federal	MV PA - NMNM78417A
SAN JUAN 29-7 UNIT	75N	3003930818	Gas	PROD	DAKOTA	Federal	Lease Basis - NMNM99306
SAN JUAN 29-7 UNIT	71A	3003921631	Gas	PROD	MESAVERDE	Federal	MV PA - NMNM78417A
SAN JUAN 29-7 UNIT	71M	3003930506	Gas	PROD	DAKOTA	Federal	Lease Basis - NMNM116787
SAN JUAN 29-7 UNIT	71M	3003930506	Gas	PROD	MESAVERDE	Federal	MV PA - NMNM78417A

Well Name	Well No.	API	State Well Classification	Well Status	Reservoir	OCD Lease Type	Reporting Serial
SAN JUAN 29-7 UNIT	559	3003924913	Gas	PROD	FRUITLAND COAL	Federal	FC PA - NMNM78417D
SAN JUAN 29-7 UNIT	66	3003907562	Gas	PROD	MESAVERDE	Federal	MV PA - NMNM78417A
SAN JUAN 29-7 UNIT	66	3003907562	Gas	PROD	PICTURED CLIFFS	Federal	PC PA - NMNM78417C
SAN JUAN 29-7 UNIT	66M	3003930322	Gas	PROD	MESAVERDE	Federal	MV PA - NMNM78417A
SAN JUAN 29-7 UNIT	66M	3003930322	Gas	PROD	DAKOTA	Federal	DK PA - NMNM78417B
SAN JUAN 29-7 UNIT	123	3003923620	Gas	PROD	MESAVERDE	Federal	MV PA - NMNM78417A
SAN JUAN 29-7 UNIT	123	3003923620	Gas	PROD	DAKOTA	Federal	DK PA - NMNM78417B
SAN JUAN 29-7 UNIT	128	3003923777	Gas	PROD	MESAVERDE	Federal	DK PA - NMNM78417B
SAN JUAN 29-7 UNIT	128	3003923777	Gas	PROD	DAKOTA	Federal	DK PA - NMNM78417B
SAN JUAN 29-7 UNIT	128	3003923777	Gas	PROD	MANCOS	Federal	DK PA - NMNM78417B
SAN JUAN 29-7 UNIT	138	3003924149	Gas	PROD	MESAVERDE	Federal	MV PA - NMNM78417A
SAN JUAN 29-7 UNIT	138	3003924149	Gas	PROD	DAKOTA	Federal	DK PA - NMNM78417B
SAN JUAN 29-7 UNIT	138M	3003930961	Gas	PROD	MANCOS	Federal	Lease Basis - NMSF078425
SAN JUAN 29-7 UNIT	138M	3003930961	Gas	PROD	MESAVERDE	Federal	MV PA - NMNM78417A
SAN JUAN 29-7 UNIT	138M	3003930961	Gas	PROD	DAKOTA	Federal	DK PA - NMNM78417B
SAN JUAN 29-7 UNIT	139	3003924146	Gas	PROD	DAKOTA	Federal	DK PA - NMNM78417B
SAN JUAN 29-7 UNIT	139	3003924146	Gas	PROD	MESAVERDE	Federal	MV PA - NMNM78417A
SAN JUAN 29-7 UNIT	139M	3003930507	Gas	PROD	DAKOTA	Federal	DK PA - NMNM78417B
SAN JUAN 29-7 UNIT	139M	3003930507	Gas	PROD	MESAVERDE	Federal	MV PA - NMNM78417A
SAN JUAN 29-7 UNIT	139N	3003930969	Gas	PROD	DAKOTA	Federal	DK PA - NMNM78417B
SAN JUAN 29-7 UNIT	139N	3003930969	Gas	PROD	MESAVERDE	Federal	MV PA - NMNM78417A
SAN JUAN 29-7 UNIT	151	3003925540	Gas	PROD	PICTURED CLIFFS	Federal	Lease Basis - NMSF078425
SAN JUAN 29-7 UNIT	30	3003900541	Gas	PROD	MESAVERDE	Federal	MV PA - NMNM78417A
SAN JUAN 29-7 UNIT	30A	3003922269	Gas	PROD	MESAVERDE	Federal	MV PA - NMNM78417A
SAN JUAN 29-7 UNIT	30A	3003922269	Gas	PROD	DAKOTA	Federal	DK PA - NMNM78417B
SAN JUAN 29-7 UNIT	30E	3003923629	Gas	PROD	DAKOTA	Federal	DK PA - NMNM78417B
SAN JUAN 29-7 UNIT	30M	3003930509	Gas	PROD	DAKOTA	Federal	DK PA - NMNM78417B

Well Name	Well No.	API	State Well Classification	Well Status	Reservoir	OCD Lease Type	Reporting Serial
SAN JUAN 29-7 UNIT	30M	3003930509	Gas	PROD	MESAVERDE	Federal	MV PA - NMNM78417A
SAN JUAN 29-7 UNIT	30N	3003930428	Gas	PROD	DAKOTA	Federal	DK PA - NMNM78417B
SAN JUAN 29-7 UNIT	30N	3003930428	Gas	PROD	MESAVERDE	Federal	MV PA - NMNM78417A
SAN JUAN 29-7 UNIT	530	3003924797	Gas	PROD	FRUITLAND COAL	Federal	FC PA - NMNM78417D
SAN JUAN 29-7 UNIT	530S	3003929718	Gas	PROD	PICTURED CLIFFS	Federal	Lease Basis - NMSF078425
SAN JUAN 29-7 UNIT	530S	3003929718	Gas	PROD	FRUITLAND COAL	Federal	FC PA - NMNM78417D
SAN JUAN 29-7 UNIT	59	3003907537	Gas	PROD	MESAVERDE	Federal	MV PA - NMNM78417A
SAN JUAN 29-7 UNIT	59C	3003926063	Gas	PROD	MESAVERDE	Federal	MV PA - NMNM78417A
SAN JUAN 29-7 UNIT	60	3003907501	Gas	PROD	MESAVERDE	Federal	MV PA - NMNM78417A
SAN JUAN 29-7 UNIT	60A	3003921920	Gas	PROD	MESAVERDE	Federal	MV PA - NMNM78417A
SAN JUAN 29-7 UNIT	60A	3003921920	Gas	PROD	DAKOTA	Federal	DK PA - NMNM78417B
SAN JUAN 29-7 UNIT	60M	3003930508	Gas	PROD	DAKOTA	Federal	DK PA - NMNM78417B
SAN JUAN 29-7 UNIT	60M	3003930508	Gas	PROD	MESAVERDE	Federal	MV PA - NMNM78417A
SAN JUAN 29-7 UNIT	60N	3003930448	Gas	PROD	MESAVERDE	Federal	MV PA - NMNM78417A
SAN JUAN 29-7 UNIT	60N	3003930448	Gas	PROD	DAKOTA	Federal	DK PA - NMNM78417B
SAN JUAN 29-7 UNIT	61	3003907478	Gas	PROD	MESAVERDE	Federal	MV PA - NMNM78417A
SAN JUAN 29-7 UNIT	61A	3003922379	Gas	PROD	DAKOTA	Federal	DK PA - NMNM78417B
SAN JUAN 29-7 UNIT	61A	3003922379	Gas	PROD	MESAVERDE	Federal	MV PA - NMNM78417A
SAN JUAN 29-7 UNIT	61B	3003926135	Gas	PROD	MESAVERDE	Federal	MV PA - NMNM78417A
SAN JUAN 29-7 UNIT	61M	3003929556	Gas	PROD	DAKOTA	Federal	DK PA - NMNM78417B
SAN JUAN 29-7 UNIT	61M	3003929556	Gas	PROD	MESAVERDE	Federal	MV PA - NMNM78417A
SAN JUAN 29-7 UNIT	69	3003907541	Gas	PROD	PICTURED CLIFFS	Federal	PC PA - NMNM78417C
SAN JUAN 29-7 UNIT	69	3003907541	Gas	PROD	MESAVERDE	Federal	MV PA - NMNM78417A
SAN JUAN 29-7 UNIT	69A	3003921632	Gas	PROD	MESAVERDE	Federal	MV PA - NMNM78417A
SAN JUAN 29-7 UNIT	70	3003907479	Gas	PROD	MESAVERDE	Federal	MV PA - NMNM78417A
SAN JUAN 29-7 UNIT	70E	3003923626	Gas	PROD	MESAVERDE	Federal	MV PA - NMNM78417A
SAN JUAN 29-7 UNIT	70E	3003923626	Gas	PROD	DAKOTA	Federal	DK PA - NMNM78417B

Well Name	Well No.	API	State Well Classification	Well Status	Reservoir	OCD Lease Type	Reporting Serial
SAN JUAN 29-7 UNIT	70M	3003930417	Gas	PROD	DAKOTA	Federal	DK PA - NMNM78417B
SAN JUAN 29-7 UNIT	70M	3003930417	Gas	PROD	MESAVERDE	Federal	MV PA - NMNM78417A
SAN JUAN 29-7 UNIT	72C	3003926650	Gas	PROD	MESAVERDE	Federal	PC PA - NMNM78417C
SAN JUAN 29-7 UNIT	74	3003907523	Gas	PROD	MESAVERDE	Federal	MV PA - NMNM78417A
SAN JUAN 29-7 UNIT	70A	3003922380	Gas	PROD	MESAVERDE	Federal	MV PA - NMNM78417A
SAN JUAN 29-7 UNIT	70A	3003922380	Gas	PROD	DAKOTA	Federal	DK PA - NMNM78417B
SAN JUAN 29-7 UNIT	70B	3003926010	Gas	PROD	MESAVERDE	Federal	MV PA - NMNM78417A
SAN JUAN 29-7 UNIT	103	3003920509	Gas	PROD	PICTURED CLIFFS	Federal	PC PA - NMNM78417C
SAN JUAN 29-7 UNIT	109	3003921330	Gas	PROD	MESAVERDE	Federal	DK PA - NMNM78417B
SAN JUAN 29-7 UNIT	109	3003921330	Gas	PROD	MANCOS	Federal	DK PA - NMNM78417B
SAN JUAN 29-7 UNIT	109	3003921330	Gas	PROD	DAKOTA	Federal	DK PA - NMNM78417B
SAN JUAN 29-7 UNIT	109M	3003922399	Gas	PROD	MESAVERDE	Federal	MV PA - NMNM78417A
SAN JUAN 29-7 UNIT	109M	3003922399	Gas	PROD	DAKOTA	Federal	DK PA - NMNM78417B
SAN JUAN 29-7 UNIT	109N	3003929701	Gas	PROD	MESAVERDE	Federal	MV PA - NMNM78417A
SAN JUAN 29-7 UNIT	109N	3003929701	Gas	PROD	DAKOTA	Federal	DK PA - NMNM78417B
SAN JUAN 29-7 UNIT	109P	3003930235	Gas	PROD	DAKOTA	Federal	DK PA - NMNM78417B
SAN JUAN 29-7 UNIT	109P	3003930235	Gas	PROD	MESAVERDE	Federal	MV PA - NMNM78417A
SAN JUAN 29-7 UNIT	110	3003921331	Gas	PROD	MESAVERDE	Federal	MV PA - NMNM78417A
SAN JUAN 29-7 UNIT	110	3003921331	Gas	PROD	DAKOTA	Federal	DK PA - NMNM78417B
SAN JUAN 29-7 UNIT	110M	3003922401	Gas	PROD	DAKOTA	Federal	DK PA - NMNM78417B
SAN JUAN 29-7 UNIT	110M	3003922401	Gas	PROD	MESAVERDE	Federal	MV PA - NMNM78417A
SAN JUAN 29-7 UNIT	110N	3003930551	Gas	PROD	DAKOTA	Federal	DK PA - NMNM78417B
SAN JUAN 29-7 UNIT	110N	3003930551	Gas	PROD	MESAVERDE	Federal	MV PA - NMNM78417A
SAN JUAN 29-7 UNIT	111	3003921332	Gas	PROD	DAKOTA	Federal	DK PA - NMNM78417B
SAN JUAN 29-7 UNIT	111	3003921332	Gas	PROD	MESAVERDE	Federal	DK PA - NMNM78417B
SAN JUAN 29-7 UNIT	111M	3003922400	Gas	PROD	DAKOTA	Federal	DK PA - NMNM78417B
SAN JUAN 29-7 UNIT	111M	3003922400	Gas	PROD	MESAVERDE	Federal	MV PA - NMNM78417A

Well Name	Well No.	API	State Well Classification	Well Status	Reservoir	OCD Lease Type	Reporting Serial
SAN JUAN 29-7 UNIT	112	3003921408	Gas	PROD	DAKOTA	Federal	DK PA - NMNM78417B
SAN JUAN 29-7 UNIT	112M	3003922398	Gas	PROD	DAKOTA	Federal	DK PA - NMNM78417B
SAN JUAN 29-7 UNIT	112M	3003922398	Gas	PROD	MESAVERDE	Federal	MV PA - NMNM78417A
SAN JUAN 29-7 UNIT	112N	3003929743	Gas	PROD	DAKOTA	Federal	DK PA - NMNM78417B
SAN JUAN 29-7 UNIT	112N	3003929743	Gas	PROD	MESAVERDE	Federal	MV PA - NMNM78417A
SAN JUAN 29-7 UNIT	113M	3003923959	Gas	PROD	DAKOTA	Federal	DK PA - NMNM78417B
SAN JUAN 29-7 UNIT	113M	3003923959	Gas	PROD	MESAVERDE	Federal	MV PA - NMNM78417A
SAN JUAN 29-7 UNIT	113N	3003929692	Gas	PROD	DAKOTA	Federal	DK PA - NMNM78417B
SAN JUAN 29-7 UNIT	113N	3003929692	Gas	PROD	MESAVERDE	Federal	MV PA - NMNM78417A
SAN JUAN 29-7 UNIT	114	3003921747	Gas	PROD	MESAVERDE	Federal	MV PA - NMNM78417A
SAN JUAN 29-7 UNIT	114	3003921747	Gas	PROD	DAKOTA	Federal	DK PA - NMNM78417B
SAN JUAN 29-7 UNIT	114M	3003922425	Gas	PROD	MESAVERDE	Federal	MV PA - NMNM78417A
SAN JUAN 29-7 UNIT	114M	3003922425	Gas	PROD	DAKOTA	Federal	DK PA - NMNM78417B
SAN JUAN 29-7 UNIT	115	3003923074	Gas	PROD	PICTURED CLIFFS	Federal	PC PA - NMNM78417C
SAN JUAN 29-7 UNIT	117	3003922762	Gas	PROD	MESAVERDE	Federal	DK PA - NMNM78417B
SAN JUAN 29-7 UNIT	117	3003922762	Gas	PROD	DAKOTA	Federal	DK PA - NMNM78417B
SAN JUAN 29-7 UNIT	117M	3003930245	Gas	PROD	DAKOTA	Federal	DK PA - NMNM78417B
SAN JUAN 29-7 UNIT	117M	3003930245	Gas	PROD	MESAVERDE	Federal	MV PA - NMNM78417A
SAN JUAN 29-7 UNIT	117N	3003930406	Gas	PROD	MESAVERDE	Federal	MV PA - NMNM78417A
SAN JUAN 29-7 UNIT	117N	3003930406	Gas	PROD	DAKOTA	Federal	DK PA - NMNM78417B
SAN JUAN 29-7 UNIT	94	3003907569	Gas	PROD	MESAVERDE	Federal	MV PA - NMNM78417A
SAN JUAN 29-7 UNIT	94A	3003921630	Gas	PROD	MESAVERDE	Federal	MV PA - NMNM78417A
SAN JUAN 29-7 UNIT	95	3003907497	Gas	PROD	MESAVERDE	Federal	MV PA - NMNM78417A
SAN JUAN 29-7 UNIT	96	3003907482	Gas	PROD	MESAVERDE	Federal	MV PA - NMNM78417A
SAN JUAN 29-7 UNIT	96B	3003926143	Gas	PROD	MESAVERDE	Federal	MV PA - NMNM78417A
SAN JUAN 29-7 UNIT	96C	3003926154	Gas	PROD	MESAVERDE	Federal	MV PA - NMNM78417A
SAN JUAN 29-7 UNIT	97	3003907484	Gas	PROD	MESAVERDE	Federal	MV PA - NMNM78417A

Well Name	Well No.	API	State Well Classification	Well Status	Reservoir	OCD Lease Type	Reporting Serial
SAN JUAN 29-7 UNIT	97B	3003925861	Gas	PROD	MESAVERDE	Federal	MV PA - NMNM78417A
SAN JUAN 29-7 UNIT	97C	3003926131	Gas	PROD	MESAVERDE	Federal	MV PA - NMNM78417A
SAN JUAN 29-7 UNIT	98	3003907535	Gas	PROD	MESAVERDE	Federal	MV PA - NMNM78417A
SAN JUAN 29-7 UNIT	99	3003907529	Gas	PROD	MESAVERDE	Federal	MV PA - NMNM78417A
SAN JUAN 29-7 UNIT	99C	3003931154	Gas	PROD	MESAVERDE	Federal	MV PA - NMNM78417A
SAN JUAN 29-7 UNIT	116	3003922033	Gas	PROD	MANCOS	Federal	DK PA - NMNM78417B
SAN JUAN 29-7 UNIT	116	3003922033	Gas	PROD	MESAVERDE	Federal	DK PA - NMNM78417B
SAN JUAN 29-7 UNIT	116	3003922033	Gas	PROD	DAKOTA	Federal	DK PA - NMNM78417B
SAN JUAN 29-7 UNIT	116E	3003930409	Gas	PROD	MESAVERDE	Federal	MV PA - NMNM78417A
SAN JUAN 29-7 UNIT	116E	3003930409	Gas	PROD	DAKOTA	Federal	DK PA - NMNM78417B
SAN JUAN 29-7 UNIT	117E	3003926648	Gas	PROD	DAKOTA	Federal	DK PA - NMNM78417B
SAN JUAN 29-7 UNIT	127	3003923775	Gas	PROD	MESAVERDE	Federal	DK PA - NMNM78417B
SAN JUAN 29-7 UNIT	127	3003923775	Gas	PROD	DAKOTA	Federal	DK PA - NMNM78417B
SAN JUAN 29-7 UNIT	127	3003923775	Gas	PROD	MANCOS	Federal	DK PA - NMNM78417B
SAN JUAN 29-7 UNIT	127M	3003925586	Gas	PROD	DAKOTA	Federal	DK PA - NMNM78417B
SAN JUAN 29-7 UNIT	127M	3003925586	Gas	PROD	MESAVERDE	Federal	MV PA - NMNM78417A
SAN JUAN 29-7 UNIT	127N	3003929710	Gas	PROD	MESAVERDE	Federal	MV PA - NMNM78417A
SAN JUAN 29-7 UNIT	127N	3003929710	Gas	PROD	DAKOTA	Federal	DK PA - NMNM78417B
SAN JUAN 29-7 UNIT	78	3003907522	Gas	PROD	MESAVERDE	Federal	MV PA - NMNM78417A
SAN JUAN 29-7 UNIT	78A	3003921633	Gas	PROD	MESAVERDE	Federal	MV PA - NMNM78417A
SAN JUAN 29-7 UNIT	78B	3003926062	Gas	PROD	MESAVERDE	Federal	MV PA - NMNM78417A
SAN JUAN 29-7 UNIT	87	3003907588	Gas	PROD	MESAVERDE	Federal	MV PA - NMNM78417A
SAN JUAN 29-7 UNIT	87B	3003926052	Gas	PROD	MESAVERDE	Federal	MV PA - NMNM78417A
SAN JUAN 29-7 UNIT	11	3003907681	Gas	PROD	MESAVERDE	Federal	MV PA - NMNM78417A
SAN JUAN 29-7 UNIT	11B	3003927035	Gas	PROD	MESAVERDE	Federal	MV PA - NMNM78417A
SAN JUAN 29-7 UNIT	183	3003927451	Gas	PROD	PICTURED CLIFFS	Federal	PC PA - NMNM78417C
SAN JUAN 29-7 UNIT	34	3003907691	Gas	PROD	MESAVERDE	Federal	MV PA - NMNM78417A

Well Name	Well No.	API	State Well Classification	Well Status	Reservoir	OCD Lease Type	Reporting Serial
SAN JUAN 29-7 UNIT	34M	3003929814	Gas	PROD	DAKOTA	Federal	DK PA - NMNM78417B
SAN JUAN 29-7 UNIT	34M	3003929814	Gas	PROD	MESAVERDE	Federal	MV PA - NMNM78417A
SAN JUAN 29-7 UNIT	37	3003907643	Gas	PROD	MESAVERDE	Federal	MV PA - NMNM78417A
SAN JUAN 29-7 UNIT	37A	3003923951	Gas	PROD	PICTURED CLIFFS	Federal	Lease Basis - NMSF078919
SAN JUAN 29-7 UNIT	37A	3003923951	Gas	PROD	MESAVERDE	Federal	MV PA - NMNM78417A
SAN JUAN 29-7 UNIT	37B	3003925650	Gas	PROD	MESAVERDE	Federal	MV PA - NMNM78417A
SAN JUAN 29-7 UNIT	37C	3003925651	Gas	PROD	MESAVERDE	Federal	MV PA - NMNM78417A
SAN JUAN 29-7 UNIT	543	3003925053	Gas	PROD	FRUITLAND COAL	Federal	FC PA - NMNM78417D
SAN JUAN 29-7 UNIT	552	3003925162	Gas	PROD	FRUITLAND COAL	Federal	FC PA - NMNM78417D
SAN JUAN 29-7 UNIT	82A	3003921622	Gas	PROD	MESAVERDE	Federal	MV PA - NMNM78417A
SAN JUAN 29-7 UNIT	82A	3003921622	Gas	PROD	PICTURED CLIFFS	Federal	MV PA - NMNM78417A
SAN JUAN 29-7 UNIT	82A	3003921622	Gas	PROD	FRUITLAND COAL	Federal	MV PA - NMNM78417A
SAN JUAN 29-7 UNIT	82M	3003931080	Gas	PROD	MANCOS	Federal	Lease Basis - NMNM129809
SAN JUAN 29-7 UNIT	82M	3003931080	Gas	PROD	MESAVERDE	Federal	MV PA - NMNM78417A
SAN JUAN 29-7 UNIT	82M	3003931080	Gas	PROD	DAKOTA	Federal	DK PA - NMNM78417B
SAN JUAN 29-7 UNIT	100	3003908118	Gas	PROD	DAKOTA	Federal	DK PA - NMNM78417B
SAN JUAN 29-7 UNIT	100M	3003929773	Gas	PROD	DAKOTA	Federal	DK PA - NMNM78417B
SAN JUAN 29-7 UNIT	100M	3003929773	Gas	PROD	MESAVERDE	Federal	MV PA - NMNM78417A
SAN JUAN 29-7 UNIT	170	3003926745	Gas	PROD	FRUITLAND COAL	Federal	Lease Basis - NMSF078943
SAN JUAN 29-7 UNIT	170	3003926745	Gas	PROD	PICTURED CLIFFS	Federal	PC PA - NMNM78417C
SAN JUAN 29-7 UNIT	188	3003927441	Gas	PROD	FRUITLAND COAL	Federal	FC PA - NMNM78417D
SAN JUAN 29-7 UNIT	188	3003927441	Gas	PROD	PICTURED CLIFFS	Federal	PC PA - NMNM78417C
SAN JUAN 29-7 UNIT	46	3003907700	Gas	PROD	MESAVERDE	Federal	MV PA - NMNM78417A
SAN JUAN 29-7 UNIT	46A	3003923943	Gas	PROD	MESAVERDE	Federal	MV PA - NMNM78417A
SAN JUAN 29-7 UNIT	46B	3003926142	Gas	PROD	MESAVERDE	Federal	MV PA - NMNM78417A
SAN JUAN 29-7 UNIT	46C	3003929730	Gas	PROD	MESAVERDE	Federal	MV PA - NMNM78417A
SAN JUAN 29-7 UNIT	46C	3003929730	Gas	PROD	DAKOTA	Federal	DK PA - NMNM78417B

Well Name	Well No.	API	State Well Classification	Well Status	Reservoir	OCD Lease Type	Reporting Serial
SAN JUAN 29-7 UNIT	583	3003925260	Gas	PROD	FRUITLAND COAL	Federal	FC PA - NMNM78417D
SAN JUAN 29-7 UNIT	583	3003925260	Gas	PROD	PICTURED CLIFFS	Federal	PC PA - NMNM78417C
SAN JUAN 29-7 UNIT	584	3003925654	Gas	PROD	FRUITLAND COAL	Federal	Lease Basis - NMSF078943
SAN JUAN 29-7 UNIT	584	3003925654	Gas	PROD	PICTURED CLIFFS	Federal	PC PA - NMNM78417C
SAN JUAN 29-7 UNIT	88	3003907684	Gas	PROD	MESAVERDE	Federal	MV PA - NMNM78417A
SAN JUAN 29-7 UNIT	88A	3003921624	Gas	PROD	MESAVERDE	Federal	MV PA - NMNM78417A
SAN JUAN 29-7 UNIT	101M	3003930212	Gas	PROD	MESAVERDE	Federal	MV PA - NMNM78417A
SAN JUAN 29-7 UNIT	101M	3003930212	Gas	PROD	DAKOTA	Federal	DK PA - NMNM78417B
SAN JUAN 29-7 UNIT	126N	3003930592	Gas	PROD	MESAVERDE	Federal	MV PA - NMNM78417A
SAN JUAN 29-7 UNIT	126N	3003930592	Gas	PROD	DAKOTA	Federal	DK PA - NMNM78417B
SAN JUAN 29-7 UNIT	52	3003907664	Gas	PROD	MESAVERDE	Federal	MV PA - NMNM78417A
SAN JUAN 29-7 UNIT	52A	3003923944	Gas	PROD	FRUITLAND COAL	Federal	MV PA - NMNM78417A
SAN JUAN 29-7 UNIT	52A	3003923944	Gas	PROD	MESAVERDE	Federal	MV PA - NMNM78417A
SAN JUAN 29-7 UNIT	547	3003925022	Gas	PROD	FRUITLAND COAL	Federal	FC PA - NMNM78417D
SAN JUAN 29-7 UNIT	548	3003925055	Gas	PROD	FRUITLAND COAL	Federal	FC PA - NMNM78417D
SAN JUAN 29-7 UNIT	89	3003907656	Gas	PROD	MESAVERDE	Federal	MV PA - NMNM78417A
SAN JUAN 29-7 UNIT	89A	3003921625	Gas	PROD	FRUITLAND COAL	Federal	FC PA - NMNM78417D
SAN JUAN 29-7 UNIT	89A	3003921625	Gas	PROD	MESAVERDE	Federal	MV PA - NMNM78417A
SAN JUAN 29-7 UNIT	89A	3003921625	Gas	PROD	PICTURED CLIFFS	Federal	Lease Basis - NMSF078943A
SAN JUAN 29-7 UNIT	113	3003921843	Gas	PROD	DAKOTA	Federal	DK PA - NMNM78417B
SAN JUAN 29-7 UNIT	113	3003921843	Gas	PROD	MESAVERDE	Federal	MV PA - NMNM78417A
SAN JUAN 29-7 UNIT	11A	3003925564	Gas	PROD	MESAVERDE	Federal	MV PA - NMNM78417A
SAN JUAN 29-7 UNIT	11A	3003925564	Gas	PROD	DAKOTA	Federal	DK PA - NMNM78417B
SAN JUAN 29-7 UNIT	11C	3003926126	Gas	PROD	MESAVERDE	Federal	MV PA - NMNM78417A
SAN JUAN 29-7 UNIT	124	3003923624	Gas	PROD	DAKOTA	Federal	DK PA - NMNM78417B
SAN JUAN 29-7 UNIT	124	3003923624	Gas	PROD	MESAVERDE	Federal	DK PA - NMNM78417B
SAN JUAN 29-7 UNIT	124M	3003923958	Gas	PROD	MESAVERDE	Federal	MV PA - NMNM78417A

Well Name	Well No.	API	State Well Classification	Well Status	Reservoir	OCD Lease Type	Reporting Serial
SAN JUAN 29-7 UNIT	124M	3003923958	Gas	PROD	DAKOTA	Federal	DK PA - NMNM78417B
SAN JUAN 29-7 UNIT	126M	3003930250	Gas	PROD	DAKOTA	Federal	DK PA - NMNM78417B
SAN JUAN 29-7 UNIT	126M	3003930250	Gas	PROD	MESAVERDE	Federal	MV PA - NMNM78417A
SAN JUAN 29-7 UNIT	187	3003927325	Gas	PROD	PICTURED CLIFFS	Federal	PC PA - NMNM78417C
SAN JUAN 29-7 UNIT	187	3003927325	Gas	PROD	FRUITLAND COAL	Federal	FC PA - NMNM78417D
SAN JUAN 29-7 UNIT	34A	3003925565	Gas	PROD	PICTURED CLIFFS	Federal	PC PA - NMNM78417C
SAN JUAN 29-7 UNIT	34A	3003925565	Gas	PROD	MESAVERDE	Federal	MV PA - NMNM78417A
SAN JUAN 29-7 UNIT	34B	3003929725	Gas	PROD	MESAVERDE	Federal	MV PA - NMNM78417A
SAN JUAN 29-7 UNIT	34B	3003929725	Gas	PROD	DAKOTA	Federal	DK PA - NMNM78417B
SAN JUAN 29-7 UNIT	38B	3003929639	Gas	PROD	DAKOTA	Federal	Lease Basis - NMNM116307
SAN JUAN 29-7 UNIT	38B	3003929639	Gas	PROD	PICTURED CLIFFS	Federal	Lease Basis - NMNM116307
SAN JUAN 29-7 UNIT	38B	3003929639	Gas	PROD	MESAVERDE	Federal	MV PA - NMNM78417A
SAN JUAN 29-7 UNIT	38M	3003930628	Gas	PROD	MESAVERDE	Federal	MV PA - NMNM78417A
SAN JUAN 29-7 UNIT	38M	3003930628	Gas	PROD	DAKOTA	Federal	Lease Basis - NMNM116307
SAN JUAN 29-7 UNIT	40A	3003921918	Gas	PROD	DAKOTA	Federal	DK PA - NMNM78417B
SAN JUAN 29-7 UNIT	40A	3003921918	Gas	PROD	MESAVERDE	Federal	MV PA - NMNM78417A
SAN JUAN 29-7 UNIT	40B	3003925859	Gas	PROD	MESAVERDE	Federal	MV PA - NMNM78417A
SAN JUAN 29-7 UNIT	40M	3003929731	Gas	PROD	MESAVERDE	Federal	MV PA - NMNM78417A
SAN JUAN 29-7 UNIT	40M	3003929731	Gas	PROD	DAKOTA	Federal	DK PA - NMNM78417B
SAN JUAN 29-7 UNIT	41	3003907520	Gas	PROD	MESAVERDE	Federal	MV PA - NMNM78417A
SAN JUAN 29-7 UNIT	41B	3003925860	Gas	PROD	MESAVERDE	Federal	MV PA - NMNM78417A
SAN JUAN 29-7 UNIT	41C	3003925913	Gas	PROD	MESAVERDE	Federal	MV PA - NMNM78417A
SAN JUAN 29-7 UNIT	42	3003907540	Gas	PROD	MESAVERDE	Federal	MV PA - NMNM78417A
SAN JUAN 29-7 UNIT	533	3003924802	Gas	PROD	FRUITLAND COAL	Federal	FC PA - NMNM78417D
SAN JUAN 29-7 UNIT	53A	3003925682	Gas	PROD	DAKOTA	Federal	DK PA - NMNM78417B
SAN JUAN 29-7 UNIT	53A	3003925682	Gas	PROD	MESAVERDE	Federal	MV PA - NMNM78417A
SAN JUAN 29-7 UNIT	544	3003925007	Gas	PROD	FRUITLAND COAL	Federal	FC PA - NMNM78417D

Well Name	Well No.	API	State Well Classification	Well Status	Reservoir	OCD Lease Type	Reporting Serial
SAN JUAN 29-7 UNIT	580	3003924860	Gas	PROD	FRUITLAND COAL	Federal	FC PA - NMNM78417D
SAN JUAN 29-7 UNIT	586S	3003929880	Gas	PROD	PICTURED CLIFFS	Federal	PC PA - NMNM78417C
SAN JUAN 29-7 UNIT	586S	3003929880	Gas	PROD	FRUITLAND COAL	Federal	FC PA - NMNM78417D
SAN JUAN 29-7 UNIT	76A	3003921629	Gas	PROD	MESAVERDE	Federal	MV PA - NMNM78417A
SAN JUAN 29-7 UNIT	81	3003907626	Gas	PROD	MESAVERDE	Federal	MV PA - NMNM78417A
SAN JUAN 29-7 UNIT	81M	3003927458	Gas	PROD	MESAVERDE	Federal	MV PA - NMNM78417A
SAN JUAN 29-7 UNIT	81M	3003927458	Gas	PROD	DAKOTA	Federal	DK PA - NMNM78417B
SAN JUAN 29-7 UNIT	82	3003907671	Gas	PROD	MESAVERDE	Federal	MV PA - NMNM78417A
SAN JUAN 29-7 UNIT	82	3003907671	Gas	PROD	PICTURED CLIFFS	Federal	PC PA - NMNM78417C
SAN JUAN 29-7 UNIT	82B	3003927697	Gas	PROD	MESAVERDE	Federal	MV PA - NMNM78417A
SAN JUAN 29-7 UNIT	82B	3003927697	Gas	PROD	DAKOTA	Federal	DK PA - NMNM78417B
SAN JUAN 29-7 UNIT	83	3003907685	Gas	PROD	MESAVERDE	Federal	MV PA - NMNM78417A
SAN JUAN 29-7 UNIT	83B	3003930712	Gas	PROD	DAKOTA	Federal	Lease Basis - NMNM122562
SAN JUAN 29-7 UNIT	83B	3003930712	Gas	PROD	MESAVERDE	Federal	MV PA - NMNM78417A
SAN JUAN 29-7 UNIT	84	3003907706	Gas	PROD	MESAVERDE	Federal	MV PA - NMNM78417A
SAN JUAN 29-7 UNIT	84A	3003921914	Gas	PROD	MESAVERDE	Federal	MV PA - NMNM78417A
SAN JUAN 29-7 UNIT	84A	3003921914	Gas	PROD	FRUITLAND COAL	Federal	MV PA - NMNM78417A
SAN JUAN 29-7 UNIT	84B	3003930868	Gas	PROD	DAKOTA	Federal	Lease Basis - NMSF078945
SAN JUAN 29-7 UNIT	84B	3003930868	Gas	PROD	MESAVERDE	Federal	MV PA - NMNM78417A
SAN JUAN 29-7 UNIT	85	3003907694	Gas	PROD	MESAVERDE	Federal	MV PA - NMNM78417A
SAN JUAN 29-7 UNIT	85A	3003923950	Gas	PROD	MESAVERDE	Federal	MV PA - NMNM78417A
SAN JUAN 29-7 UNIT	85B	3003925667	Gas	PROD	MESAVERDE	Federal	MV PA - NMNM78417A
SAN JUAN 29-7 UNIT	85C	3003925668	Gas	PROD	MESAVERDE	Federal	MV PA - NMNM78417A
SAN JUAN 29-7 UNIT	154	3003925717	Gas	PROD	PICTURED CLIFFS	Federal	PC PA - NMNM78417C
SAN JUAN 29-7 UNIT	159	3003925856	Gas	PROD	PICTURED CLIFFS	Federal	PC PA - NMNM78417C
SAN JUAN 29-7 UNIT	168	3003926652	Gas	PROD	PICTURED CLIFFS	Federal	PC PA - NMNM78417C
SAN JUAN 29-7 UNIT	169	3003927452	Gas	PROD	PICTURED CLIFFS	Federal	PC PA - NMNM78417C

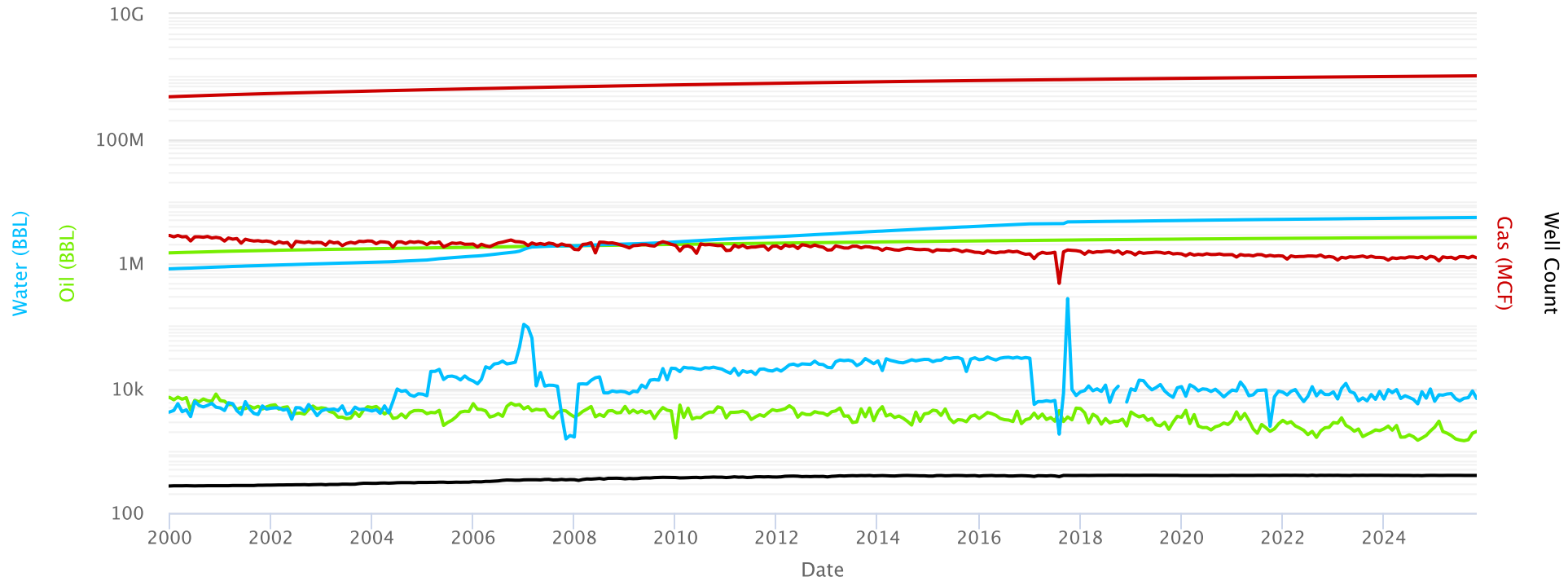
Well Name	Well No.	API	State Well Classification	Well Status	Reservoir	OCD Lease Type	Reporting Serial
SAN JUAN 29-7 UNIT	79	3003907683	Gas	PROD	MESAVERDE	Federal	MV PA - NMNM78417A
SAN JUAN 29-7 UNIT	79A	3003921623	Gas	PROD	MESAVERDE	Federal	MV PA - NMNM78417A
SAN JUAN 29-7 UNIT	79B	3003926222	Gas	PROD	MESAVERDE	Federal	MV PA - NMNM78417A
SAN JUAN 29-7 UNIT	79B	3003926222	Gas	PROD	DAKOTA	Federal	DK PA - NMNM78417B
SAN JUAN 29-7 UNIT	79M	3003929972	Gas	PROD	DAKOTA	Federal	DK PA - NMNM78417B
SAN JUAN 29-7 UNIT	79M	3003929972	Gas	PROD	MESAVERDE	Federal	MV PA - NMNM78417A
SAN JUAN 29-7 UNIT	90	3003907710	Gas	PROD	MESAVERDE	Federal	MV PA - NMNM78417A
SAN JUAN 29-7 UNIT	90A	3003925566	Gas	PROD	MESAVERDE	Federal	MV PA - NMNM78417A
SAN JUAN 29-7 UNIT	90A	3003925566	Gas	PROD	DAKOTA	Federal	DK PA - NMNM78417B
SAN JUAN 29-7 UNIT	90M	3003926153	Gas	PROD	MESAVERDE	Federal	MV PA - NMNM78417A
SAN JUAN 29-7 UNIT	90N	3003929815	Gas	PROD	MESAVERDE	Federal	MV PA - NMNM78417A
SAN JUAN 29-7 UNIT	90N	3003929815	Gas	PROD	DAKOTA	Federal	DK PA - NMNM78417B
SAN JUAN 29-7 UNIT	126	3003923774	Gas	PROD	MANCOS	Federal	DK PA - NMNM78417B
SAN JUAN 29-7 UNIT	126	3003923774	Gas	PROD	DAKOTA	Federal	DK PA - NMNM78417B
SAN JUAN 29-7 UNIT	126	3003923774	Gas	PROD	MESAVERDE	Federal	DK PA - NMNM78417B
SAN JUAN 29-7 UNIT	29M	3003930227	Gas	PROD	DAKOTA	Federal	DK PA - NMNM78417B
SAN JUAN 29-7 UNIT	29M	3003930227	Gas	PROD	MESAVERDE	Federal	MV PA - NMNM78417A
SAN JUAN 29-7 UNIT	33A	3003921628	Gas	PROD	MESAVERDE	Federal	MV PA - NMNM78417A
SAN JUAN 29-7 UNIT	33B	3003927064	Gas	PROD	MESAVERDE	Federal	MV PA - NMNM78417A
SAN JUAN 29-7 UNIT	33C	3003929793	Gas	PROD	DAKOTA	Federal	Lease Basis - NMNM116706
SAN JUAN 29-7 UNIT	33C	3003929793	Gas	PROD	MESAVERDE	Federal	MV PA - NMNM78417A
SAN JUAN 29-7 UNIT	4A	3003925574	Gas	PROD	PICTURED CLIFFS	Federal	PC PA - NMNM78417C
SAN JUAN 29-7 UNIT	4A	3003925574	Gas	PROD	MESAVERDE	Federal	MV PA - NMNM78417A
SAN JUAN 29-7 UNIT	507R	3003925263	Gas	PROD	FRUITLAND COAL	Federal	FC PA - NMNM78417D
SAN JUAN 29-7 UNIT	507S	3003929467	Gas	PROD	FRUITLAND COAL	Federal	FC PA - NMNM78417D
SAN JUAN 29-7 UNIT	76B	3003926147	Gas	PROD	MESAVERDE	Federal	MV PA - NMNM78417A
SAN JUAN 29-7 UNIT	76R	3003920319	Gas	PROD	MESAVERDE	Federal	MV PA - NMNM78417A

Well Name	Well No.	API	State Well Classification	Well Status	Reservoir	OCD Lease Type	Reporting Serial
SAN JUAN 29-7 UNIT	77	3003907505	Gas	PROD	MESAVERDE	Federal	MV PA - NMNM78417A
SAN JUAN 29-7 UNIT	77A	3003921919	Gas	PROD	DAKOTA	Federal	DK PA - NMNM78417B
SAN JUAN 29-7 UNIT	77A	3003921919	Gas	PROD	MESAVERDE	Federal	MV PA - NMNM78417A
SAN JUAN 29-7 UNIT	77B	3003925887	Gas	PROD	MESAVERDE	Federal	MV PA - NMNM78417A
SAN JUAN 29-7 UNIT	77E	3003923625	Gas	PROD	DAKOTA	Federal	DK PA - NMNM78417B
SAN JUAN 29-7 UNIT	77E	3003923625	Gas	PROD	MESAVERDE	Federal	DK PA - NMNM78417B
SAN JUAN 29-7 UNIT	77N	3003930993	Gas	PROD	MESAVERDE	Federal	MV PA - NMNM78417A
SAN JUAN 29-7 UNIT	77N	3003930993	Gas	PROD	DAKOTA	Federal	DK PA - NMNM78417B
SAN JUAN 29-7 UNIT	81A	3003925642	Gas	PROD	DAKOTA	Federal	DK PA - NMNM78417B
SAN JUAN 29-7 UNIT	81A	3003925642	Gas	PROD	MESAVERDE	Federal	MV PA - NMNM78417A
SAN JUAN 29-7 UNIT	81N	3003929703	Gas	PROD	MESAVERDE	Federal	MV PA - NMNM78417A
SAN JUAN 29-7 UNIT	81N	3003929703	Gas	PROD	DAKOTA	Federal	DK PA - NMNM78417B
SAN JUAN 29-7 UNIT	83A	3003925516	Gas	PROD	MESAVERDE	Federal	MV PA - NMNM78417A
SAN JUAN 29-7 UNIT	83A	3003925516	Gas	PROD	PICTURED CLIFFS	Federal	Lease Basis - NMNM95710
SAN JUAN 29-7 UNIT	83M	3003930713	Gas	PROD	MESAVERDE	Federal	MV PA - NMNM78417A
SAN JUAN 29-7 UNIT	83M	3003930713	Gas	PROD	DAKOTA	Federal	Lease Basis - NMNM122562
SAN JUAN 29-7 UNIT NP	574	3003925251	Gas	PROD	FRUITLAND COAL	State	FC PA - NMNM78417D
SAN JUAN 29-7 UNIT NP	574	3003925251	Gas	PROD	PICTURED CLIFFS	State	PC PA - NMNM78417C
SAN JUAN 29-7 UNIT NP	515	3003924315	Gas	PROD	FRUITLAND COAL	State	FC PA - NMNM78417D
SAN JUAN 29-7 UNIT NP	516	3003924294	Gas	PROD	MESAVERDE	State	MV PA - NMNM78417A
SAN JUAN 29-7 UNIT NP	516	3003924294	Gas	PROD	FRUITLAND COAL	State	FC PA - NMNM78417D
SAN JUAN 29-7 UNIT NP	516	3003924294	Gas	PROD	DAKOTA	State	DK PA - NMNM78417B
SAN JUAN 29-7 UNIT NP	554	3003924810	Gas	PROD	FRUITLAND COAL	FEE	FC PA - NMNM78417D

Well Name	Well No.	API	State Well Classification	Well Status	Reservoir	OCD Lease Type	Reporting Serial
SAN JUAN 29-7 UNIT NP	560	3003924811	Gas	PROD	FRUITLAND COAL	FEE	Lease Basis - NMNM96698
SAN JUAN 29-7 UNIT NP	561	3003924812	Gas	PROD	FRUITLAND COAL	FEE	Lease Basis - NMNM96699
SAN JUAN 29-7 UNIT NP	565	3003924813	Gas	PROD	FRUITLAND COAL	FEE	Lease Basis - NMNM96701
SAN JUAN 29-7 UNIT NP	525	3003924839	Gas	PROD	FRUITLAND COAL	Federal	Lease Basis - NMSF078424
SAN JUAN 29-7 UNIT NP	526	3003924817	Gas	PROD	FRUITLAND COAL	Federal	FC PA - NMNM78417D
SAN JUAN 29-7 UNIT NP	563	3003925009	Gas	PROD	FRUITLAND COAL	Federal	FC PA - NMNM78417D
SAN JUAN 29-7 UNIT NP	142	3003924314	Gas	PROD	FRUITLAND COAL	Federal	Lease Basis - NMSF078425
SAN JUAN 29-7 UNIT NP	142	3003924314	Gas	PROD	PICTURED CLIFFS	Federal	Lease Basis - NMSF078425
SAN JUAN 29-7 UNIT NP	143	3003924299	Gas	PROD	FRUITLAND COAL	Federal	PC PA - NMNM78417C
SAN JUAN 29-7 UNIT NP	143	3003924299	Gas	PROD	PICTURED CLIFFS	Federal	PC PA - NMNM78417C
SAN JUAN 29-7 UNIT NP	517	3003924959	Gas	PROD	FRUITLAND COAL	Federal	Lease Basis - NMSF078425
SAN JUAN 29-7 UNIT NP	518	3003924969	Gas	PROD	FRUITLAND COAL	Federal	Lease Basis - NMSF078425
SAN JUAN 29-7 UNIT NP	528	3003924818	Gas	PROD	FRUITLAND COAL	Federal	Lease Basis - NMNM96695
SAN JUAN 29-7 UNIT NP	529	3003924796	Gas	PROD	FRUITLAND COAL	Federal	Lease Basis - NMSF078425
SAN JUAN 29-7 UNIT NP	531	3003924798	Gas	PROD	FRUITLAND COAL	Federal	Lease Basis - NMSF078425
SAN JUAN 29-7 UNIT NP	577	3003924991	Gas	PROD	FRUITLAND COAL	Federal	Lease Basis - NMNM96703

Well Name	Well No.	API	State Well Classification	Well Status	Reservoir	OCD Lease Type	Reporting Serial
SAN JUAN 29-7 UNIT NP	512	3003924342	Gas	PROD	DAKOTA	Federal	Lease Basis - NMSF078503A
SAN JUAN 29-7 UNIT NP	512	3003924342	Gas	PROD	FRUITLAND COAL	Federal	Lease Basis - NMSF078503A
SAN JUAN 29-7 UNIT NP	512	3003924342	Gas	PROD	MESAVERDE	Federal	Lease Basis - NMSF078503A
SAN JUAN 29-7 UNIT NP	513	3003924298	Gas	PROD	FRUITLAND COAL	Federal	Lease Basis - NMSF078503A
SAN JUAN 29-7 UNIT NP	569	3003924906	Gas	PROD	FRUITLAND COAL	Federal	Lease Basis - NMNM96702
SAN JUAN 29-7 UNIT NP	511	3003924378	Gas	PROD	FRUITLAND COAL	Federal	Lease Basis - NMNM96694
SAN JUAN 29-7 UNIT NP	514	3003924334	Gas	PROD	FRUITLAND COAL	Federal	Lease Basis - NMSF079514

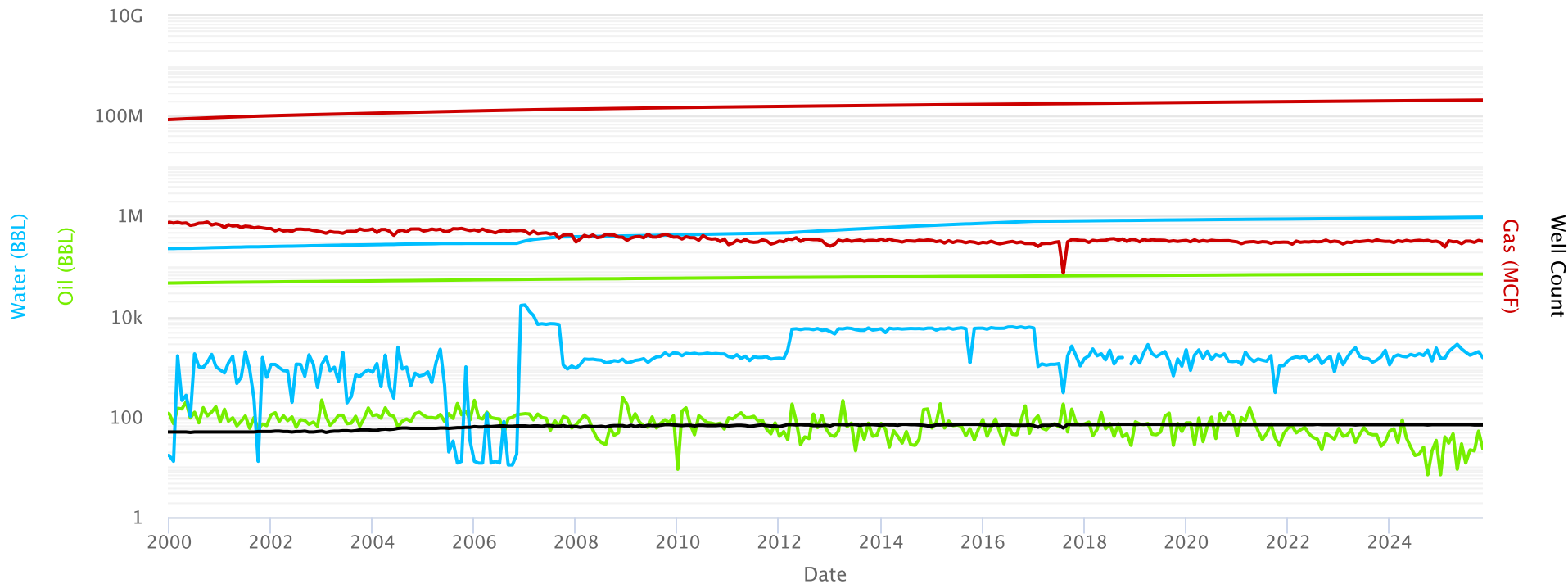
## Monthly Production



# San Juan 29-7 Unit NMNM 078417D FRC

## Fruitland Coal PA - 22nd Revision

Monthly Production

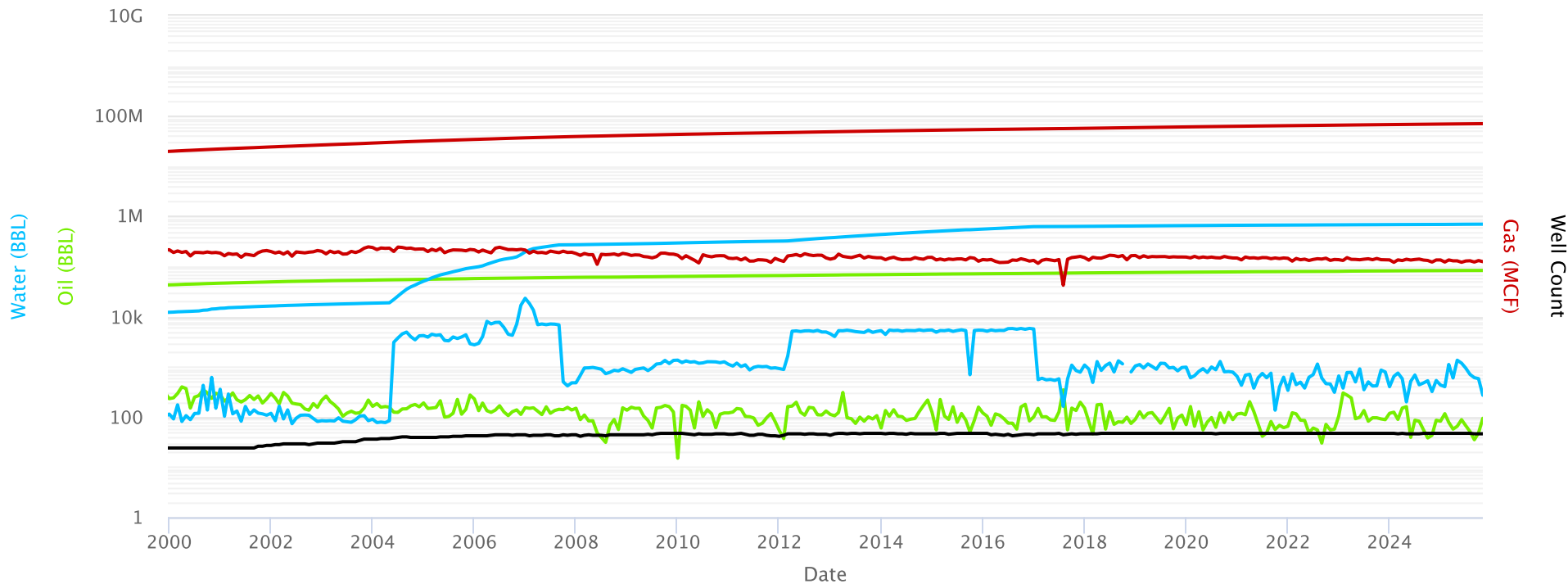


● Cum Oil   ● Cum Gas   ■ Cum Water   ▲ Oil   ▼ Gas   ● Water   ◆ Well Count

# San Juan 29-7 Unit NMNM 078417C PC

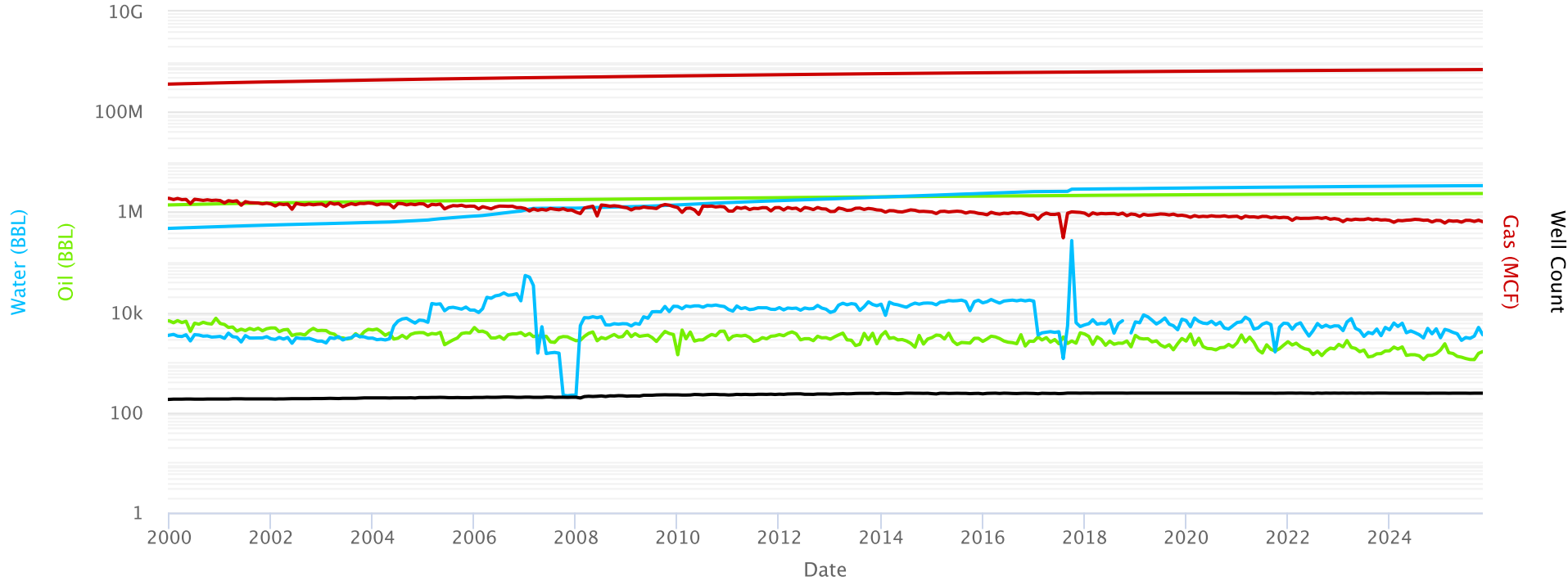
## Pictured Cliffs PA - 18th Revision

Monthly Production



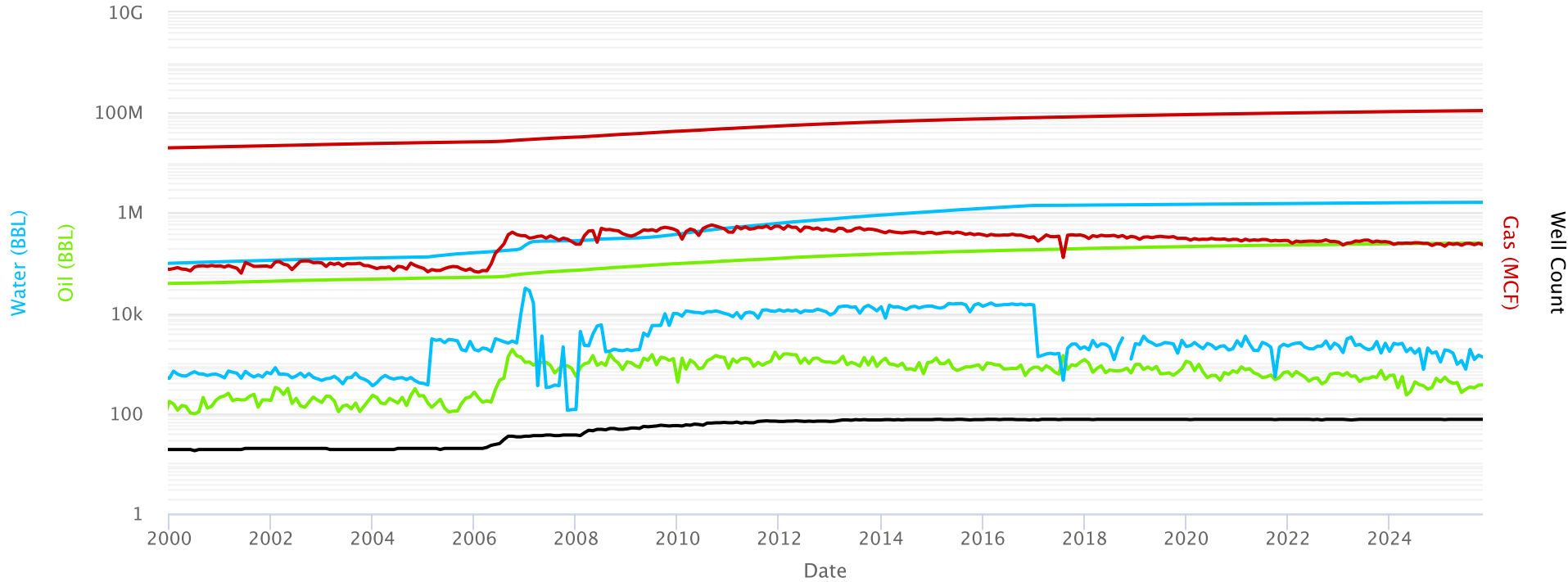
● Cum Oil   ● Cum Gas   ■ Cum Water   ▲ Oil   ▼ Gas   ◆ Water   ◆ Well Count

# San Juan 29-7 Unit NMNM 078417A MV Mesaverde PA - 13th Revision Monthly Production

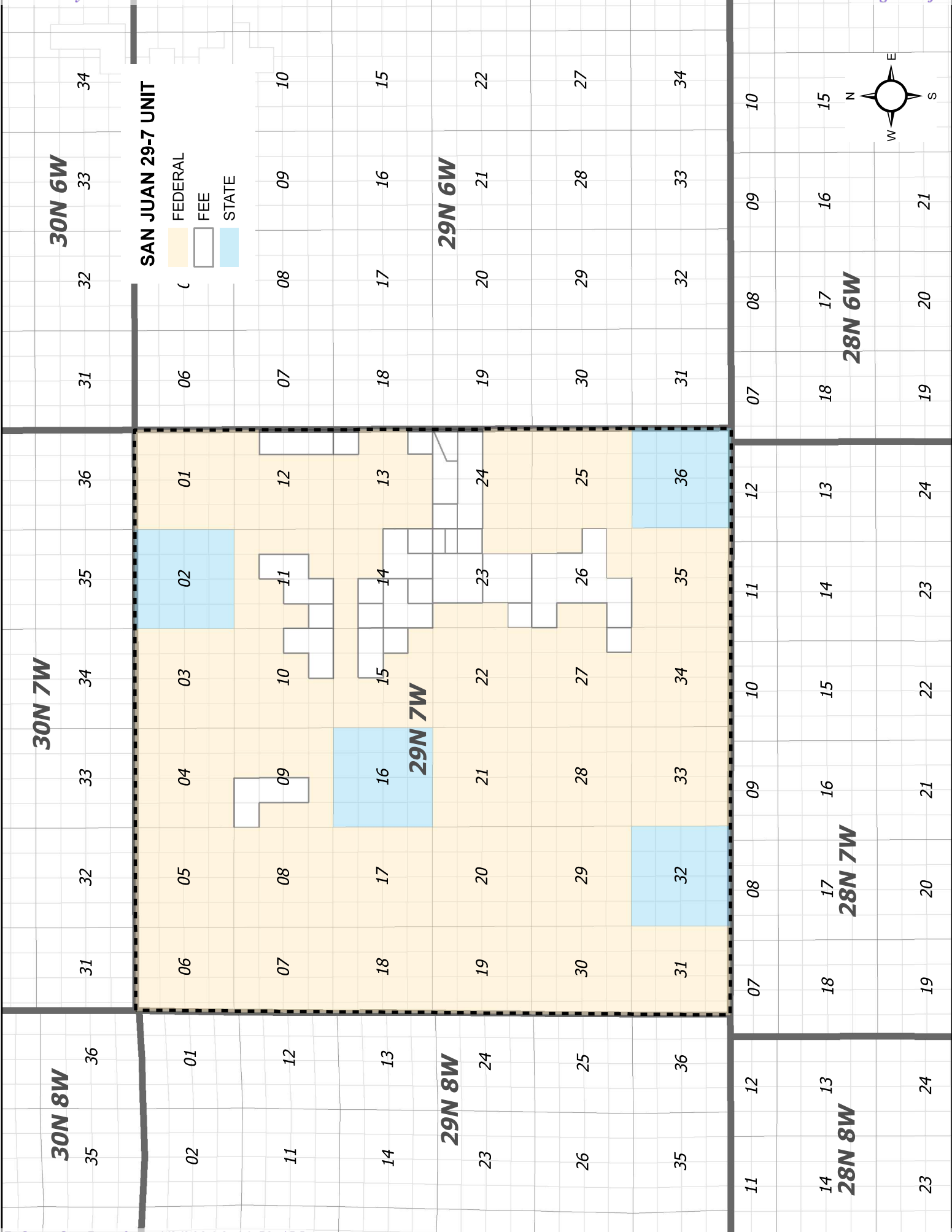


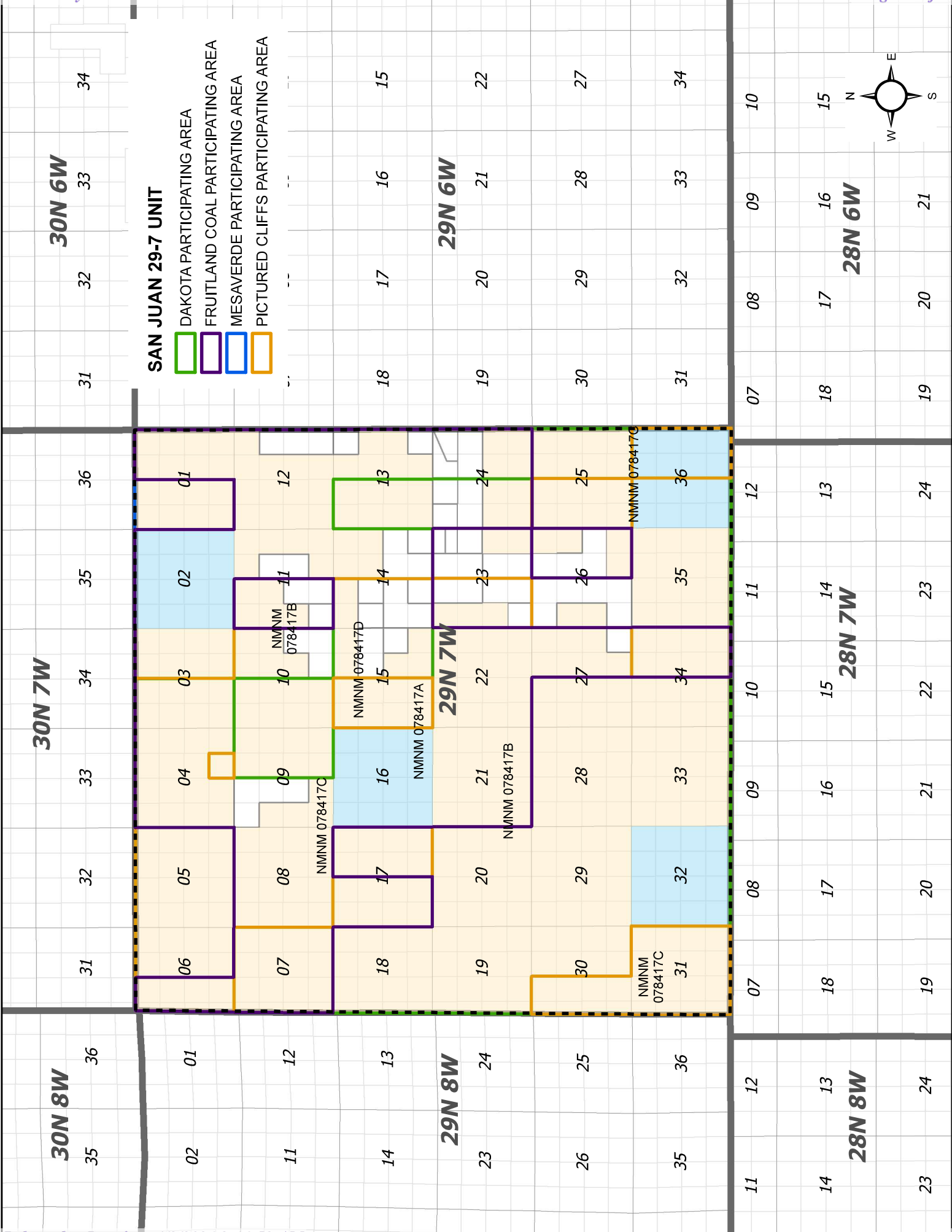
### Dakota PA - 21st Revision

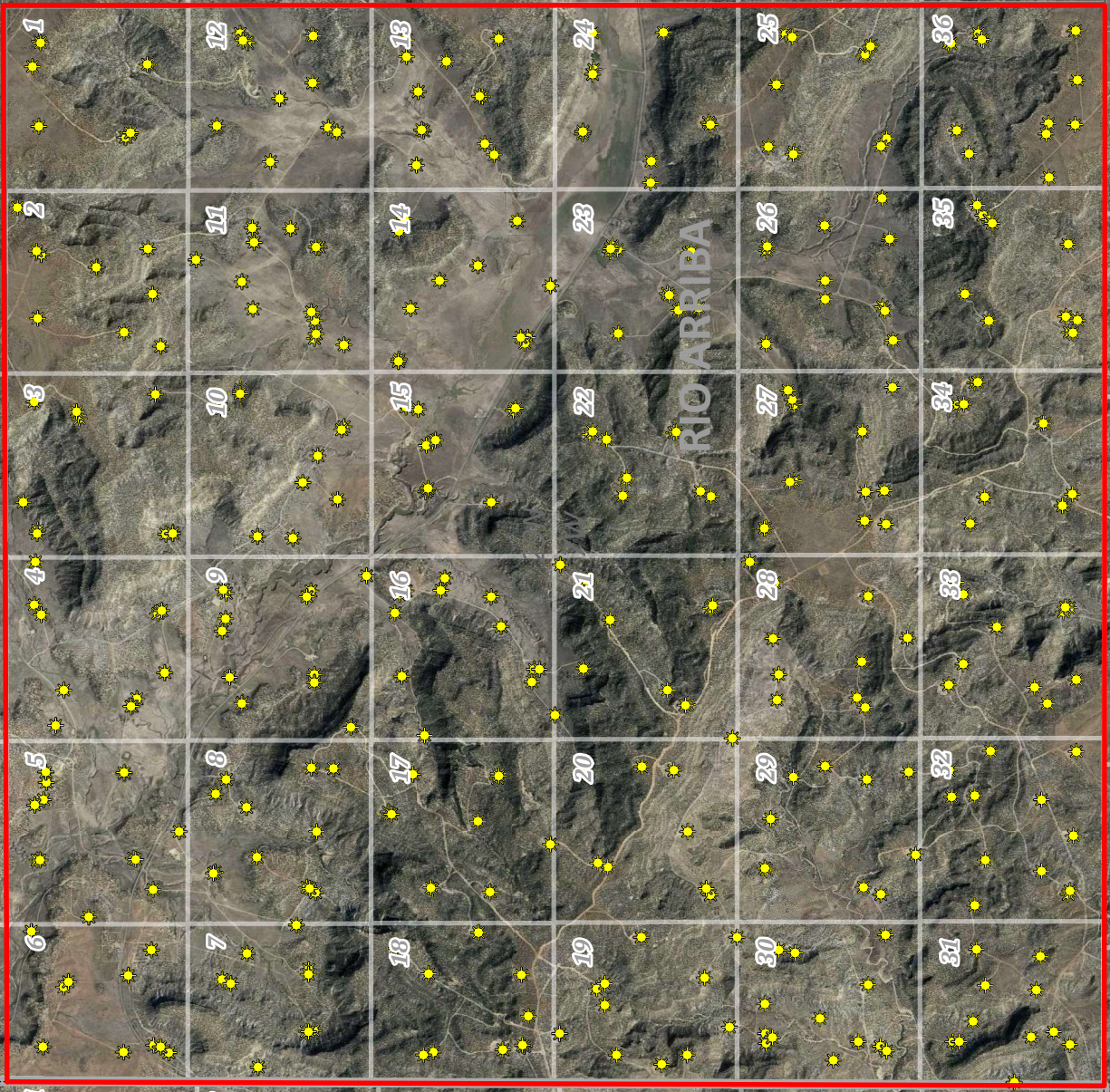
Monthly Production



● Cum Oil   ● Cum Gas   ■ Cum Water   ▲ Oil   ▼ Gas   ● Water   ◆ Well Count







**San Juan 29-7 Unit**  
**Rio Arriba County, NM**

- San Juan 29-7 Unit
- ★ Oil and Gas Well

Sante Fe Main Office  
Phone: (505) 476-3441

General Information  
Phone: (505) 629-6116

Online Phone Directory  
<https://www.emnrd.nm.gov/ocd/contact-us>

**State of New Mexico**  
**Energy, Minerals and Natural Resources**  
**Oil Conservation Division**  
**1220 S. St Francis Dr.**  
**Santa Fe, NM 87505**

CONDITIONS

Action 568674

**CONDITIONS**

Operator: HILCORP ENERGY COMPANY 1111 Travis Street Houston, TX 77002	OGRID: 372171
	Action Number: 568674
	Action Type: [HEAR] Order Compliance/Progress Report (ORDER COMPLIANCE REPORT)

**CONDITIONS**

Created By	Condition	Condition Date
dmcclure	ACCEPTED FOR RECORD	4/8/2026