

Case No.
3453

Large Exhibits

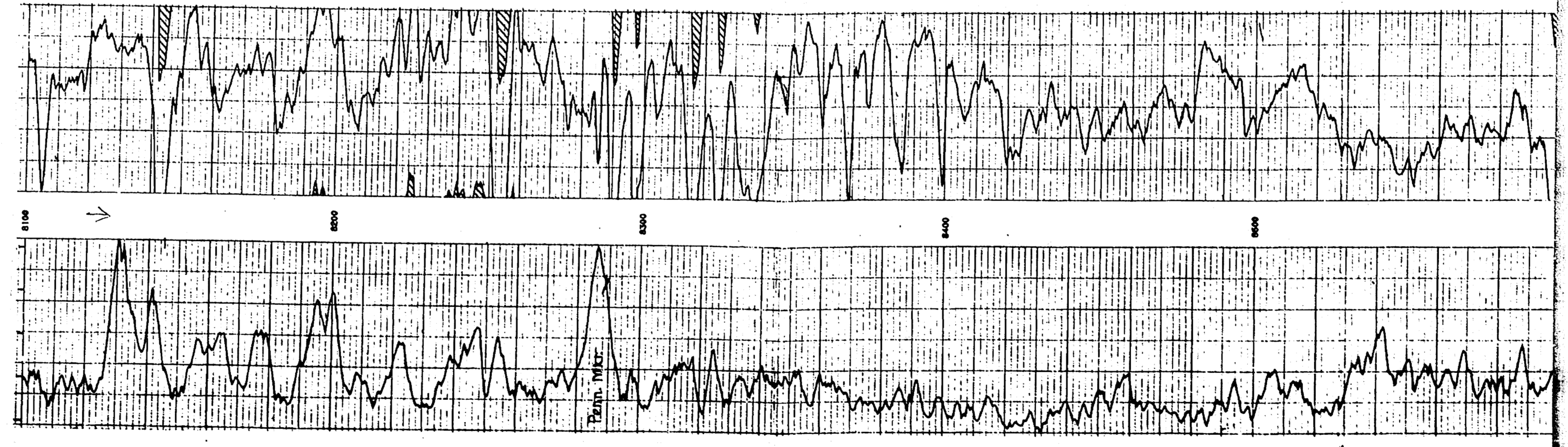


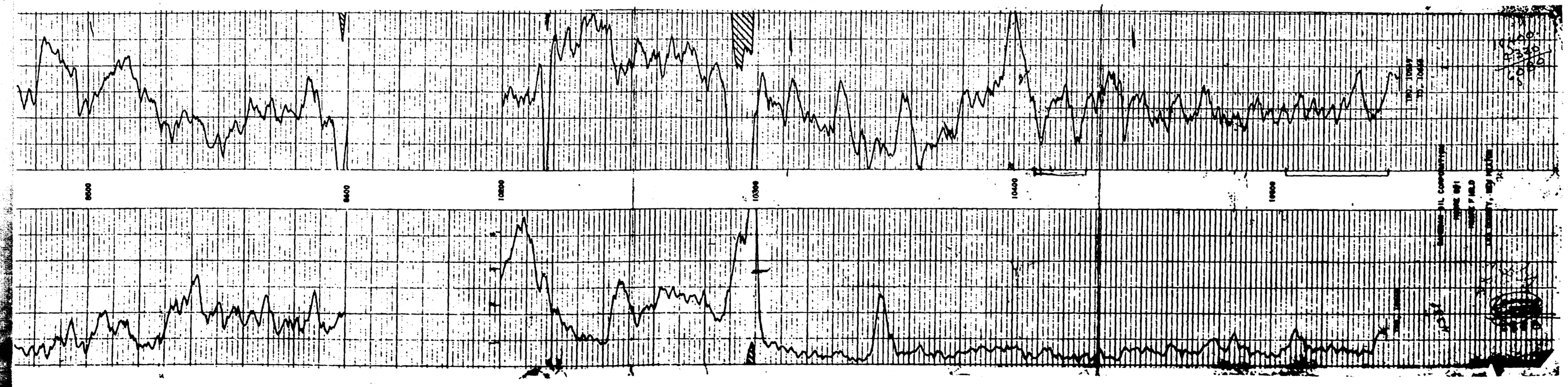
AREA 111 111111 111111
BEFORE EXAMINER NUTER
OIL CONSERVATION COMMISSION
CASE NO. 3453
EXHIBIT NO. 3

Location:
 Standard Oil Corporation
 New York, N.Y.
 Lee County, New Mexico

Log measured from: 1' above rotary table
Pressure: 277 above 2-5/8" range
Pressure: 1038
Direction: 1038

Type of Log: Ocean Bay
Date: 5-22-53
Time: 10:00 AM
Relative Depth (F.L.L.): 10000
Bottom of Log: 10000
Bottom of Core: 10000
Top of Fluid in Hole: 10000
Maximum Observed Temperature: 72.1
Time recorded: 2:00 PM
Statistical variation - inches: 20 - 75
Recorded by: 2002
Witnessed by: 2002





GAMMA RAY ENERGY LOG

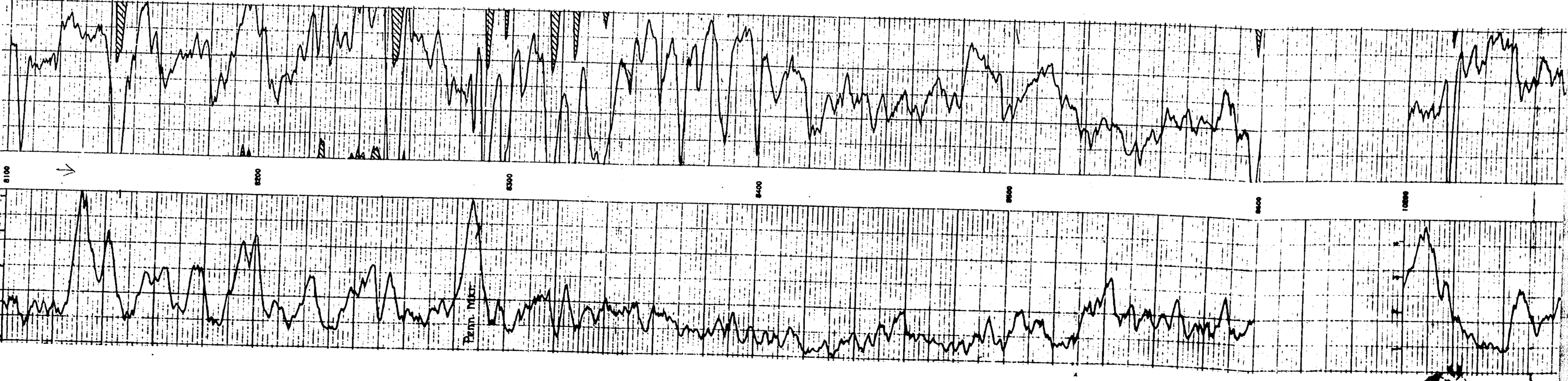
Log No. 180
Project No. 180
Date of Run 5-11-53
Log No. 180

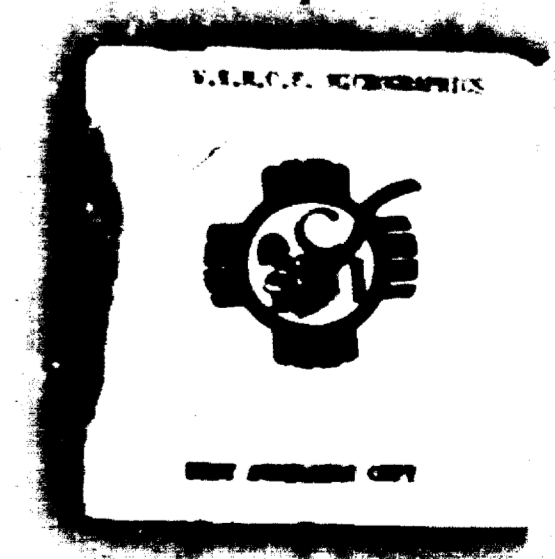
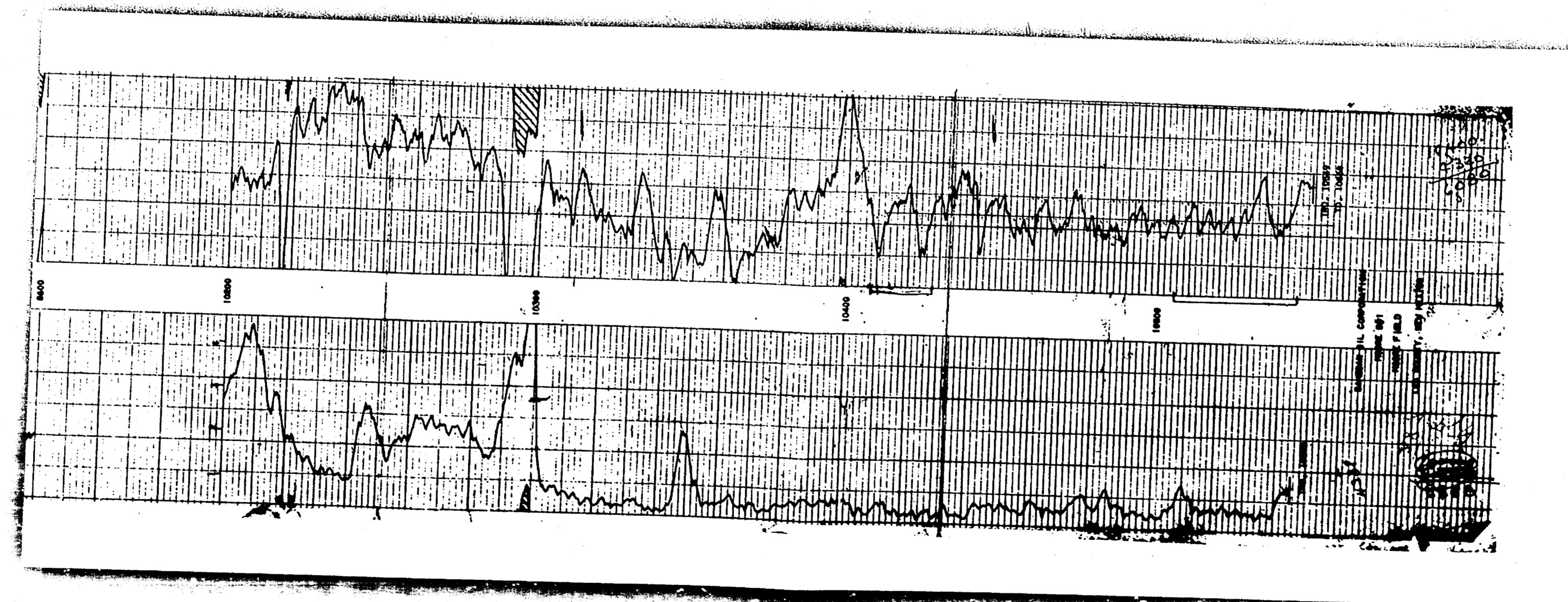
Operator J. E. Smith
Location 1/2 mile S.W. of
 1/4 Sec 20, T. 2N., R. 22W., S. 20-0-2
County Jay County, New Mexico
Section 180
Range 180

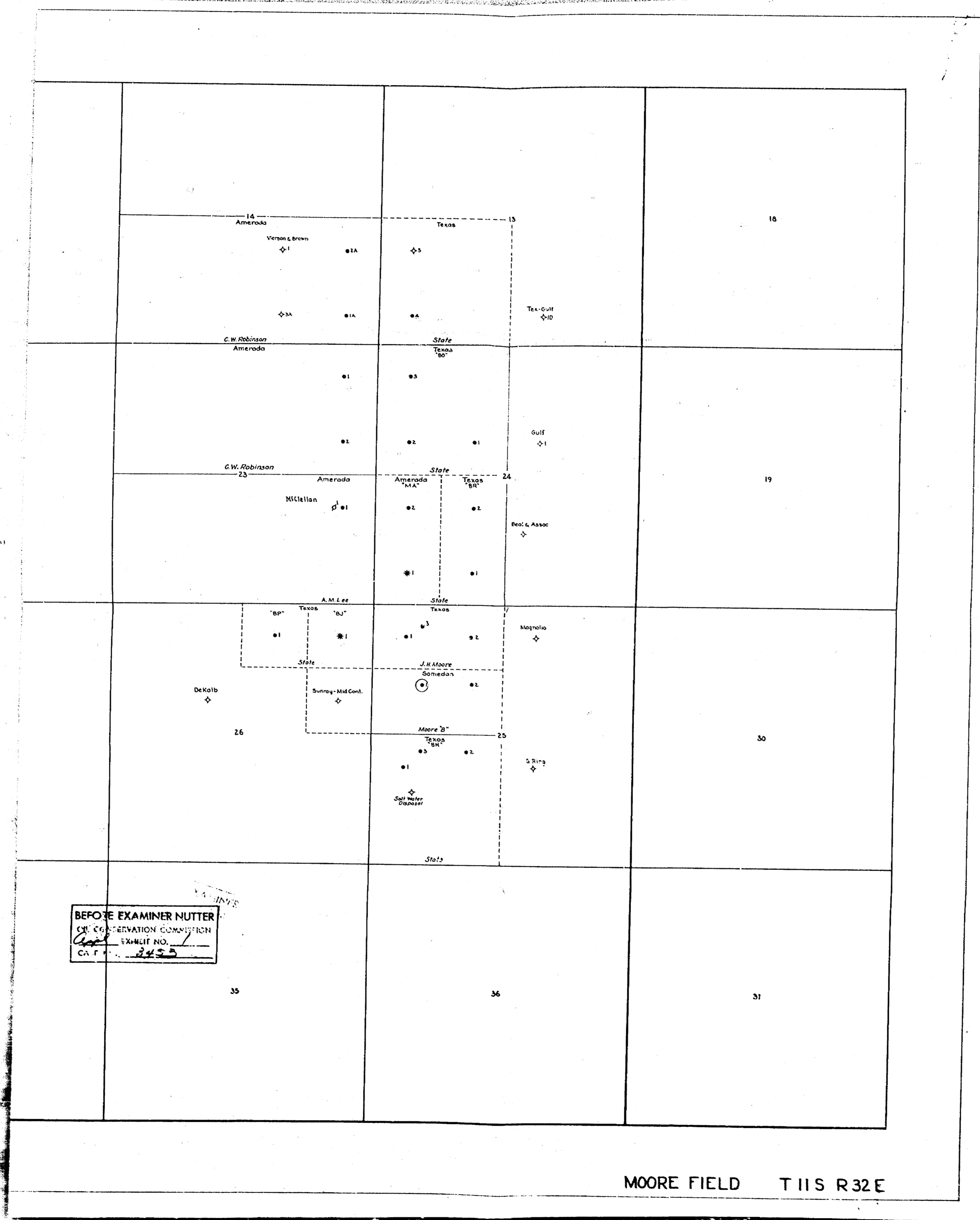
Drilling Method 1/2 inch rotary table
Drill Bit 1 1/2" 5-3/8" Fringe
Drill Rod 1 1/2" 5-3/8" Fringe

Type of Log Energy
Well Depth (Feet) 100
Depth of Log (Feet) 100
Type of Log Energy
Scale of Log 100
Scale of Log 100
Scale of Log 100
Scale of Log 100
Scale of Log 100
Scale of Log 100

App 1 Ek 3
 Ct 3123







MOORE FIELD T 11 S R 32 E

