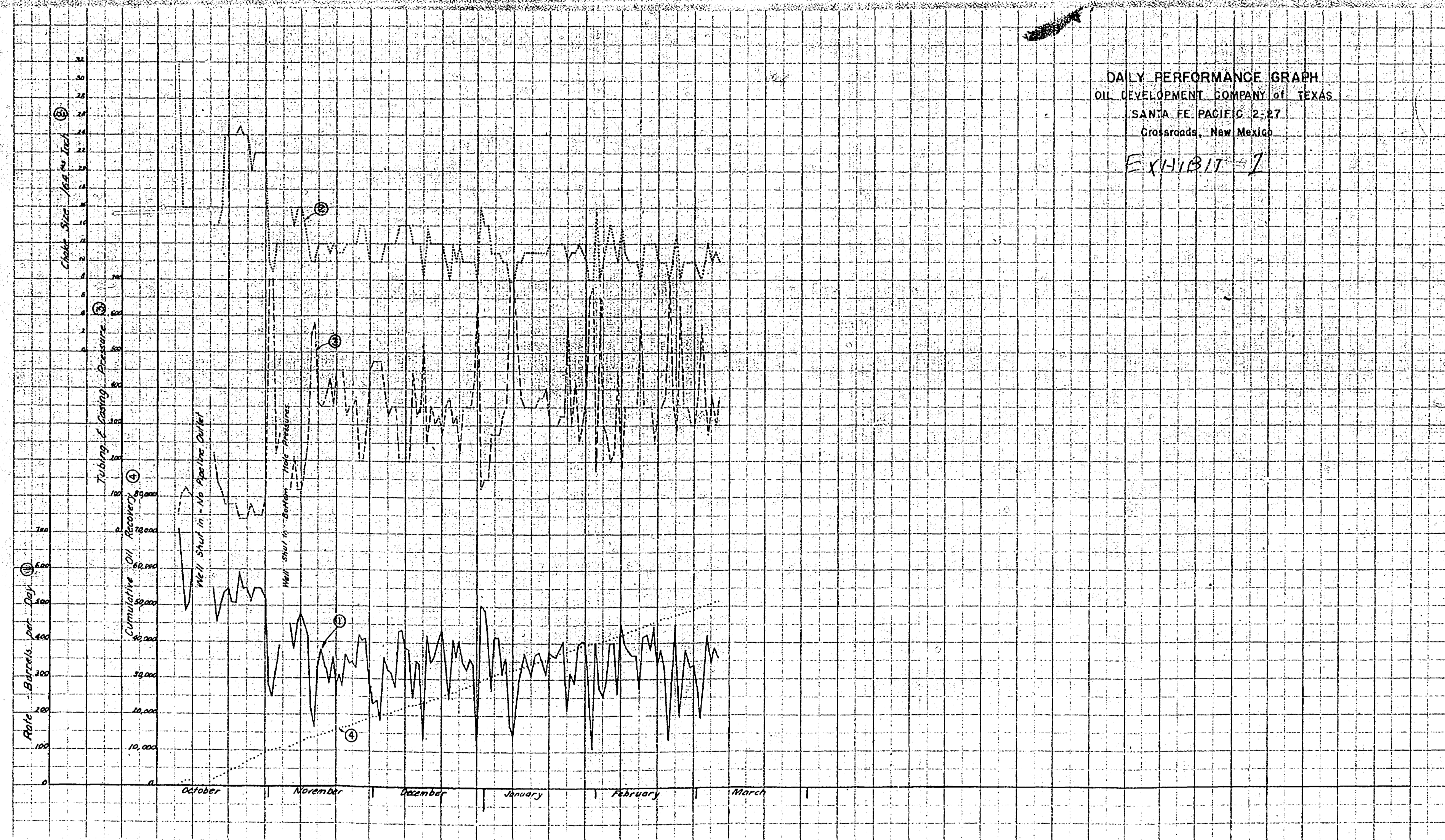


CASE No.

149

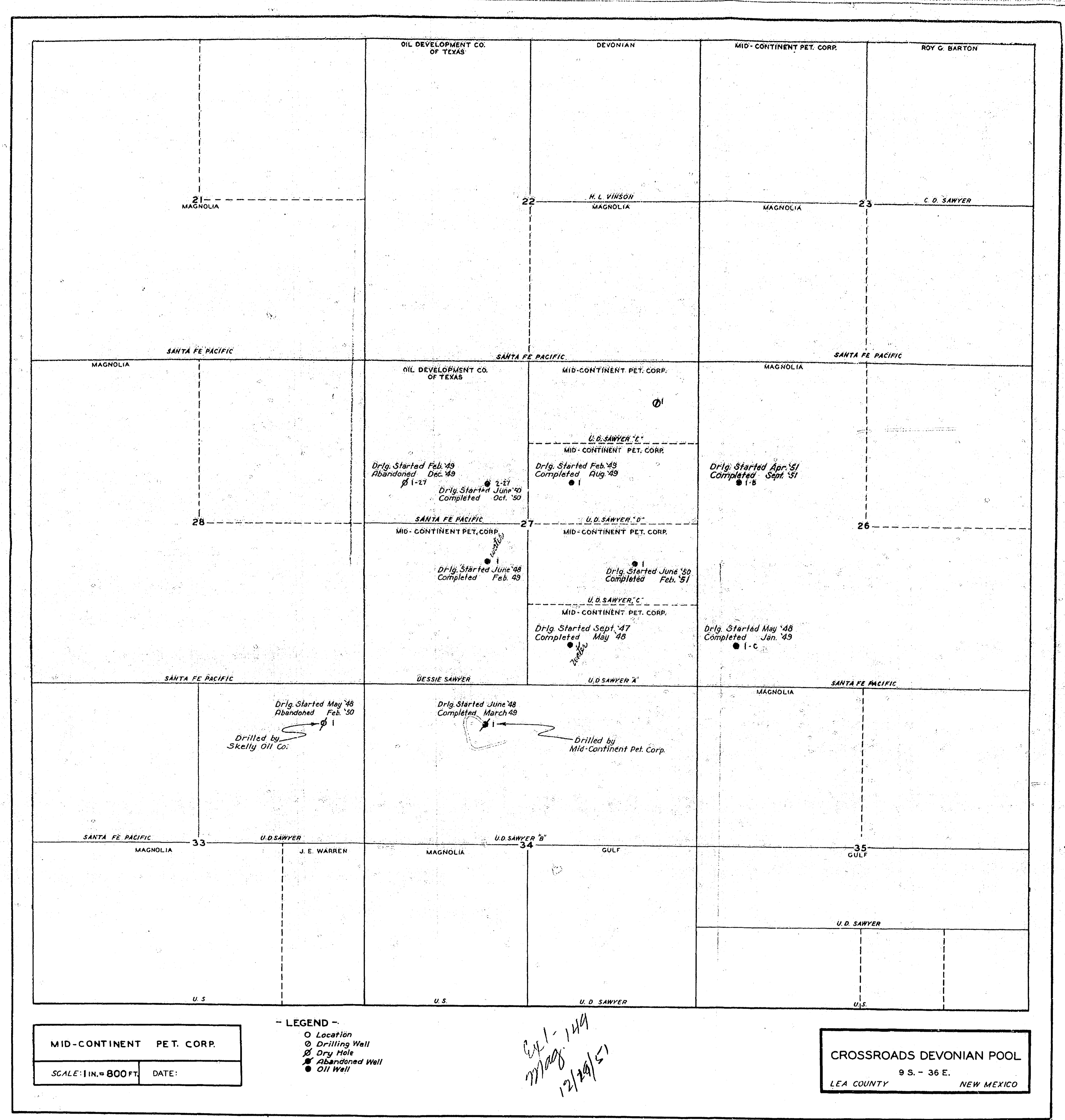
Large Exhibits

OCD



THIS GRAPH IS THE PROPERTY OF THE OIL DEVELOPMENT COMPANY OF TEXAS AND IS NOT TO BE REPRODUCED OR COPIED IN ANY MANNER WITHOUT THE WRITTEN PERMISSION OF THE COMPANY.

PLotted by [illegible]



MAGNOLIA		OIL DEVELOPMENT CO. OF TEXAS	DEVONIAN	MID-CONTINENT PET. CORR.	ROY G. BARTON
MAGNOLIA		22		MAGNOLIA	23
SANTA FE PACIFIC		SANTA FE PACIFIC		SANTA FE PACIFIC	
MAGNOLIA	OIL DEVELOPMENT CO. OF TEXAS	MID-CONTINENT PET. CORR.	MAGNOLIA	SANTA FE PACIFIC	
28		27		26	
SANTA FE PACIFIC		DESSIE SAWYER	U.D. SAWYER 'A'	SANTA FE PACIFIC	
SANTA FE PACIFIC		J. E. WARREN	U.D. SAWYER 'B'	MAGNOLIA	SANTA FE PACIFIC
MAGNOLIA	33	34	GULF	35	
U.S.		U.S.		U.D. SAWYER	
U.S.		U.S.		U.S.	

Drig. Started Feb '49
Abandoned Dec '49
1-17

Drig. Started Jan '49
Completed Oct '50
1-21

Drig. Started Feb '49
Completed Aug '49
1

Drig. Started Apr '51
Completed Sept '51
1-5

Drig. Started June '48
Completed Feb '49
1

Drig. Started June '50
Completed Feb '51
1

Drig. Started Sept '47
Completed May '48
1-3

Drig. Started May '48
Completed Jan '49
1-C

Drig. Started May '48
Abandoned Feb '50
1

Drilled by Skelly Oil Co.

Drig. Started June '48
Completed March '49
1

Drilled by Mid-Continent Pet. Corp.

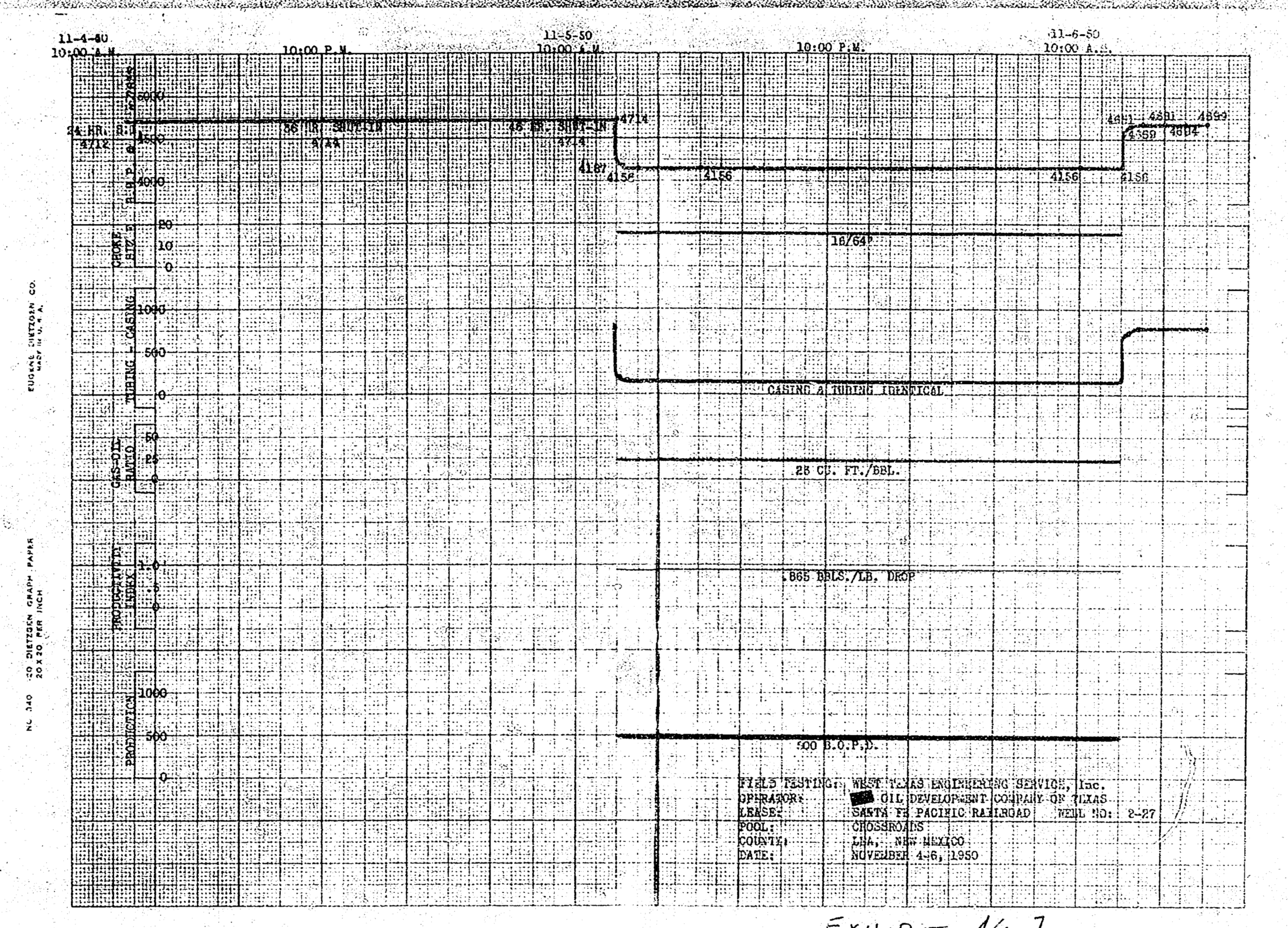
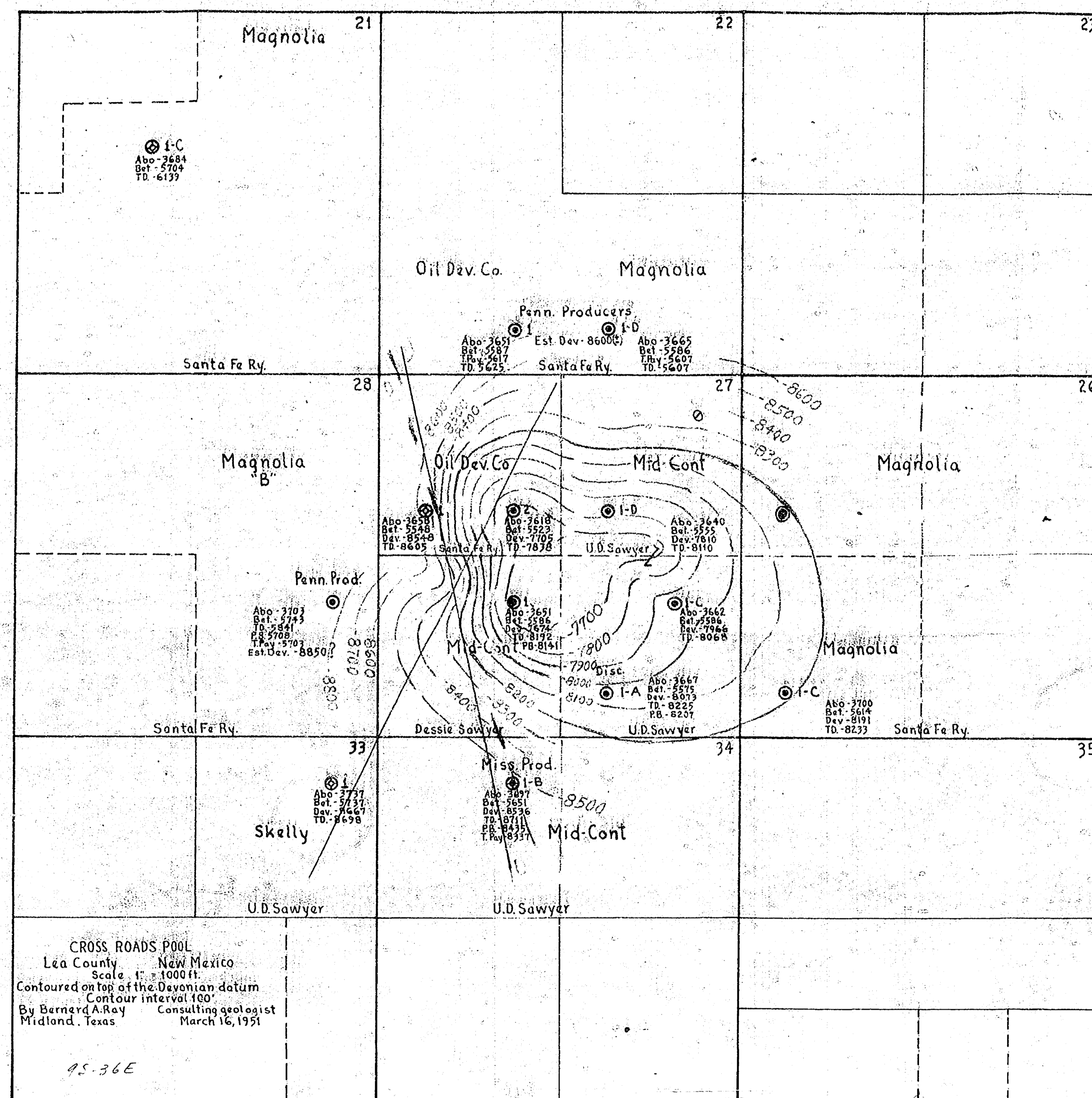
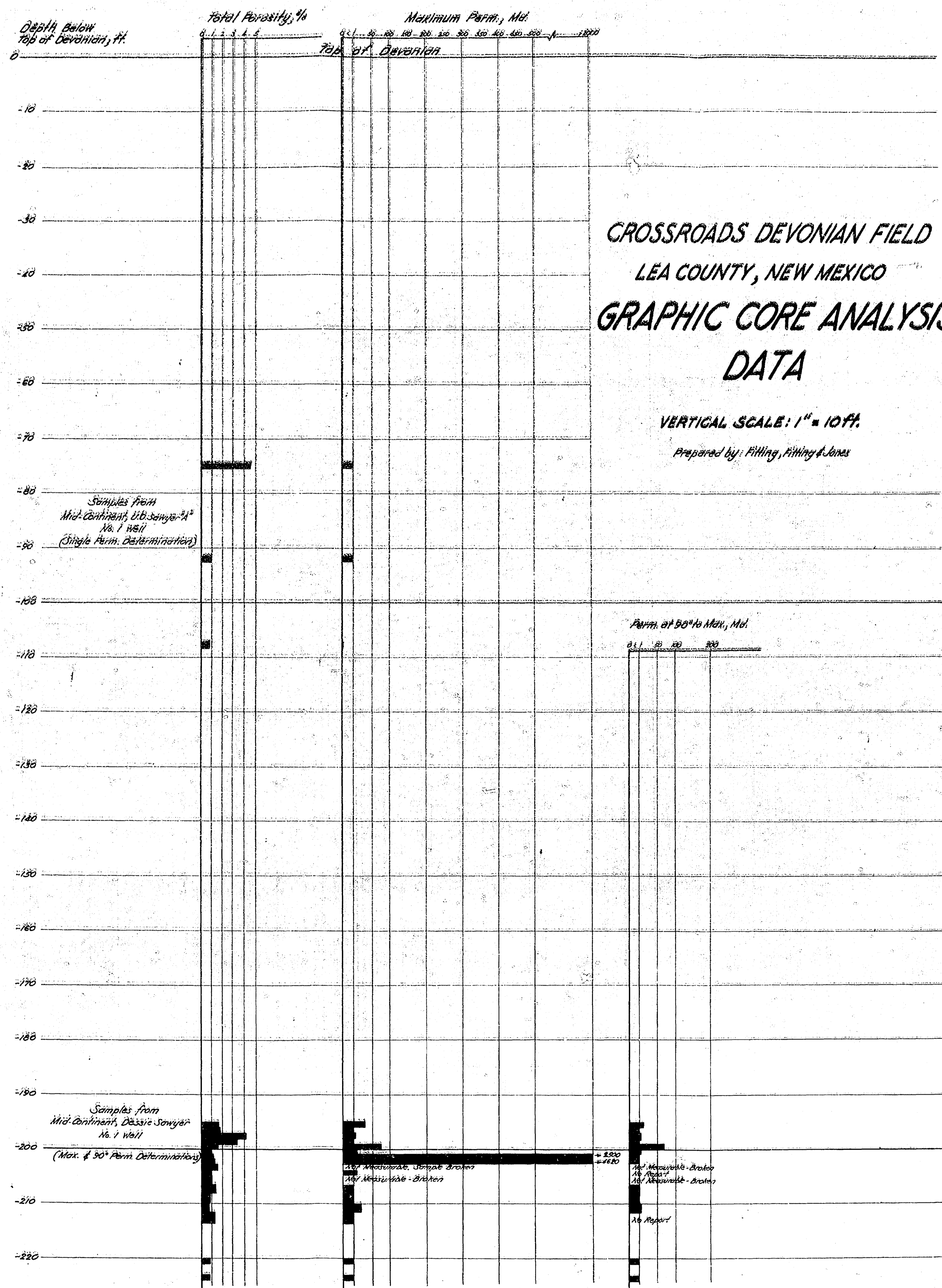


EXHIBIT No. 1



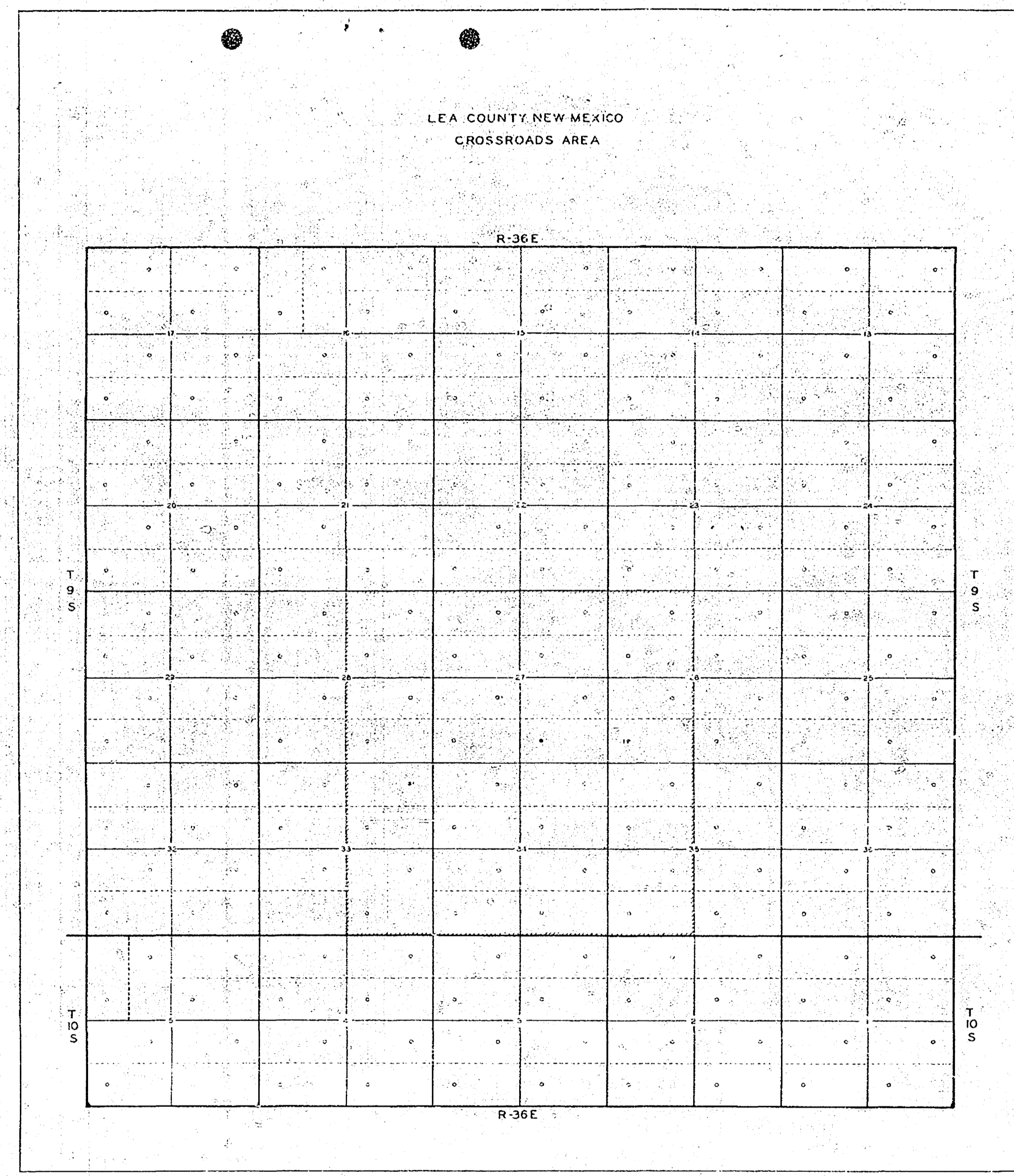
620000
 1000
 4000
 1,000,000
 1,000,000
 250,000
 125,000
 62,500
 31,250
 15,625
 7,812.5
 3,906.25
 1,953.125
 976.5625
 488.28125
 244.140625
 122.0703125
 61.03515625
 30.517578125
 15.2587890625
 7.62939453125
 3.814697265625
 1.9073486328125
 0.95367431640625

Bl #1 - Mid-Cont
 Case 149
 3/21/51
 Cont. 779

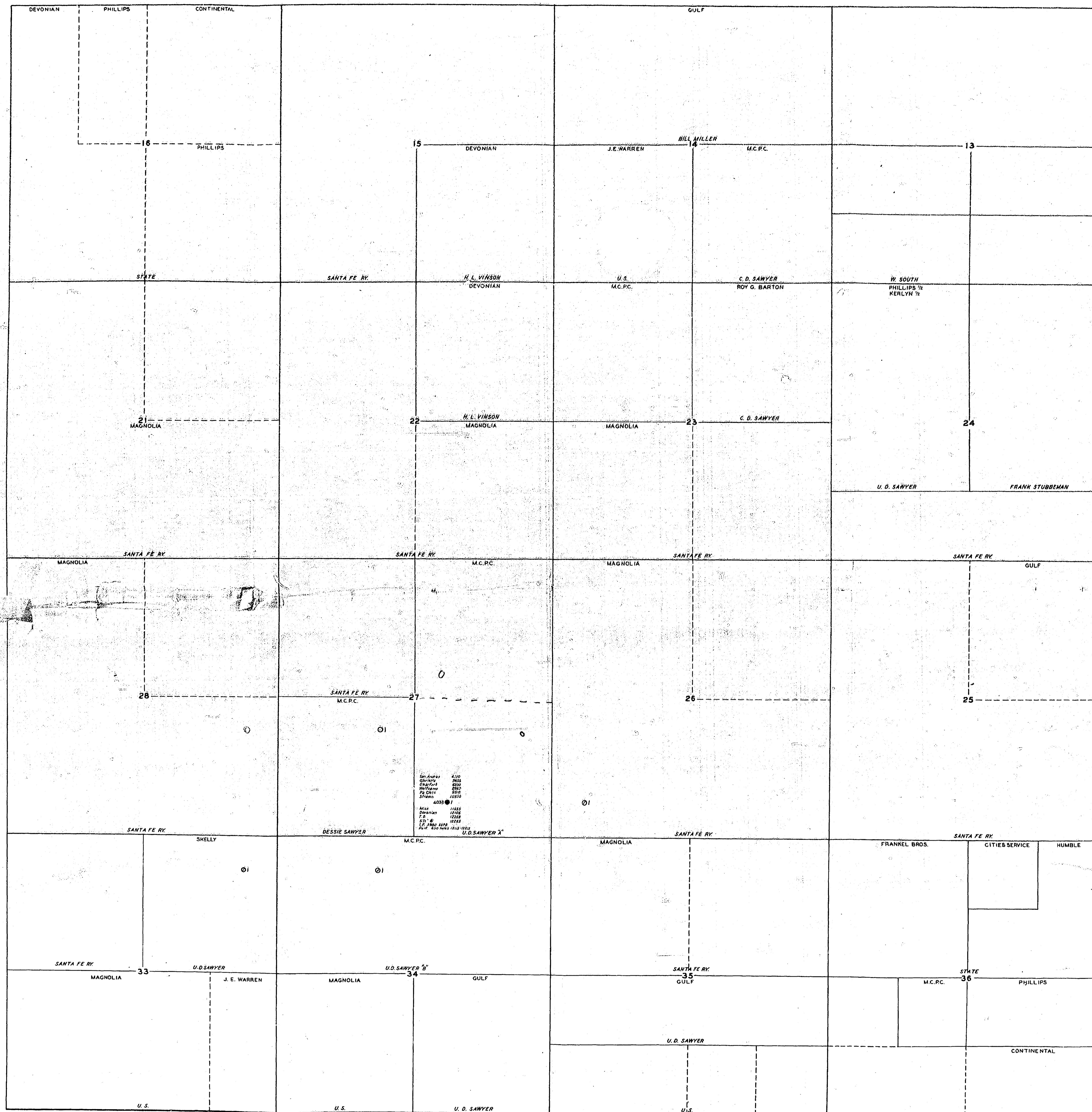


Sample Ex. No. 1
Core 149
11/19/51

LEA COUNTY, NEW MEXICO
CROSSROADS AREA



R 36 E

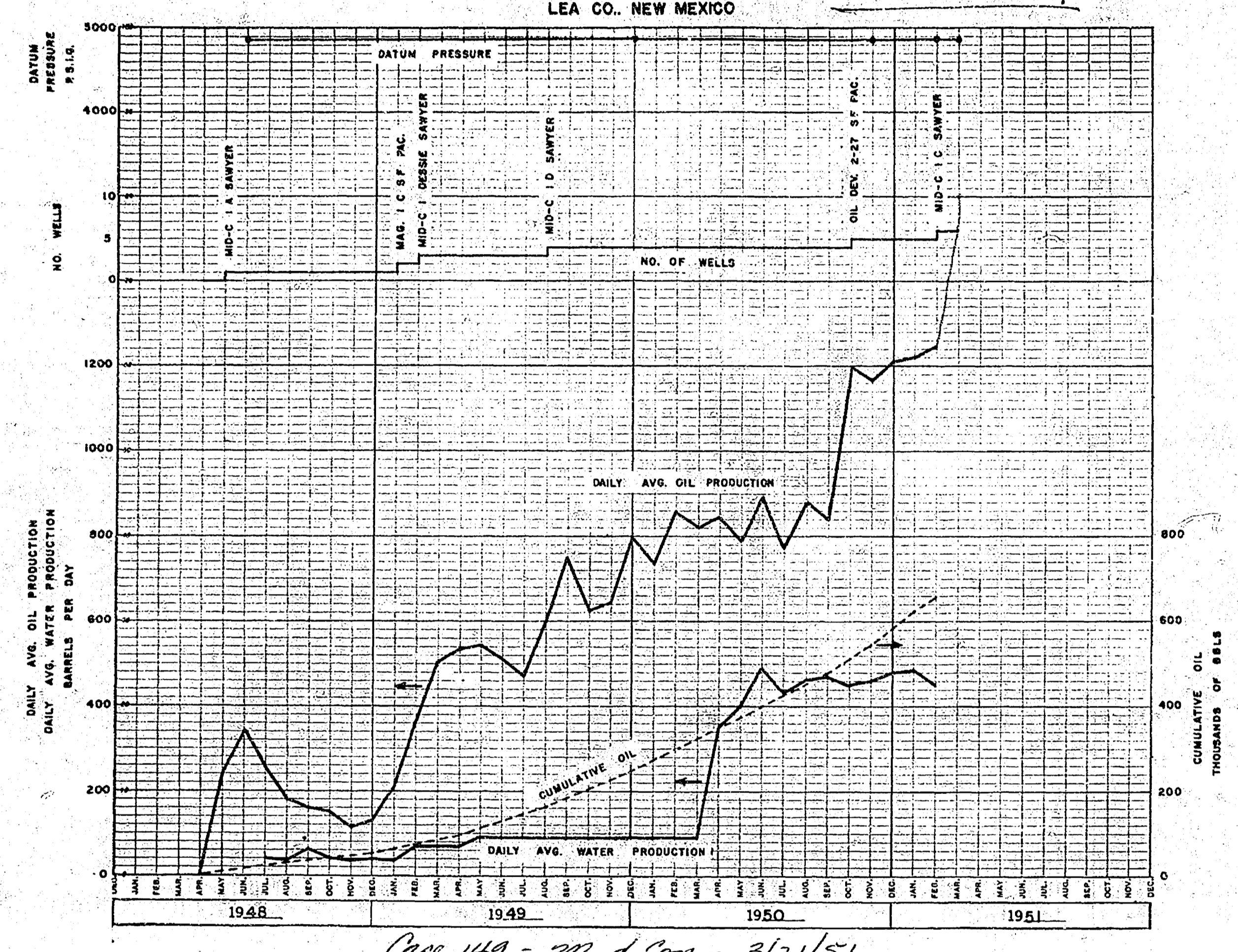


T 9 S

MID-CONTINENT PET. CORP.
 SCALE: 1/4" = 800 FT. DATE:

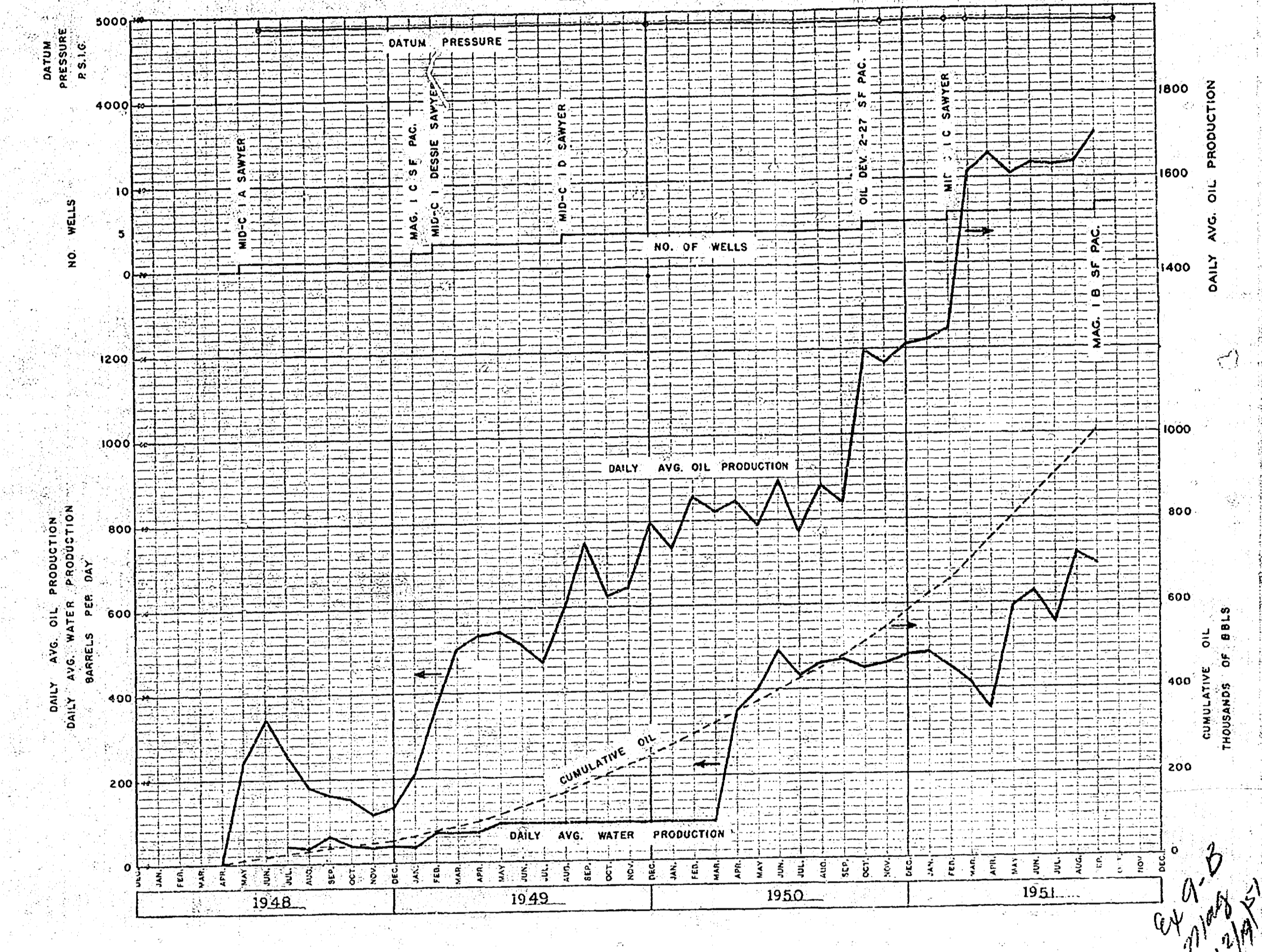
U. D. SAWYER 'A' & 'B'
 DESSIE SAWYER
 LEA COUNTY NEW MEXICO

PERFORMANCE CURVES
CROSSROADS DEVONIAN POOL
 LEA CO., NEW MEXICO **EXHIBIT 9**



Case 149 - Prod Com - 3/21/51

PERFORMANCE CURVES
CROSSROADS DEVONIAN POOL
 LEA CO., NEW MEXICO



Case 149 - Prod Com - 3/21/51