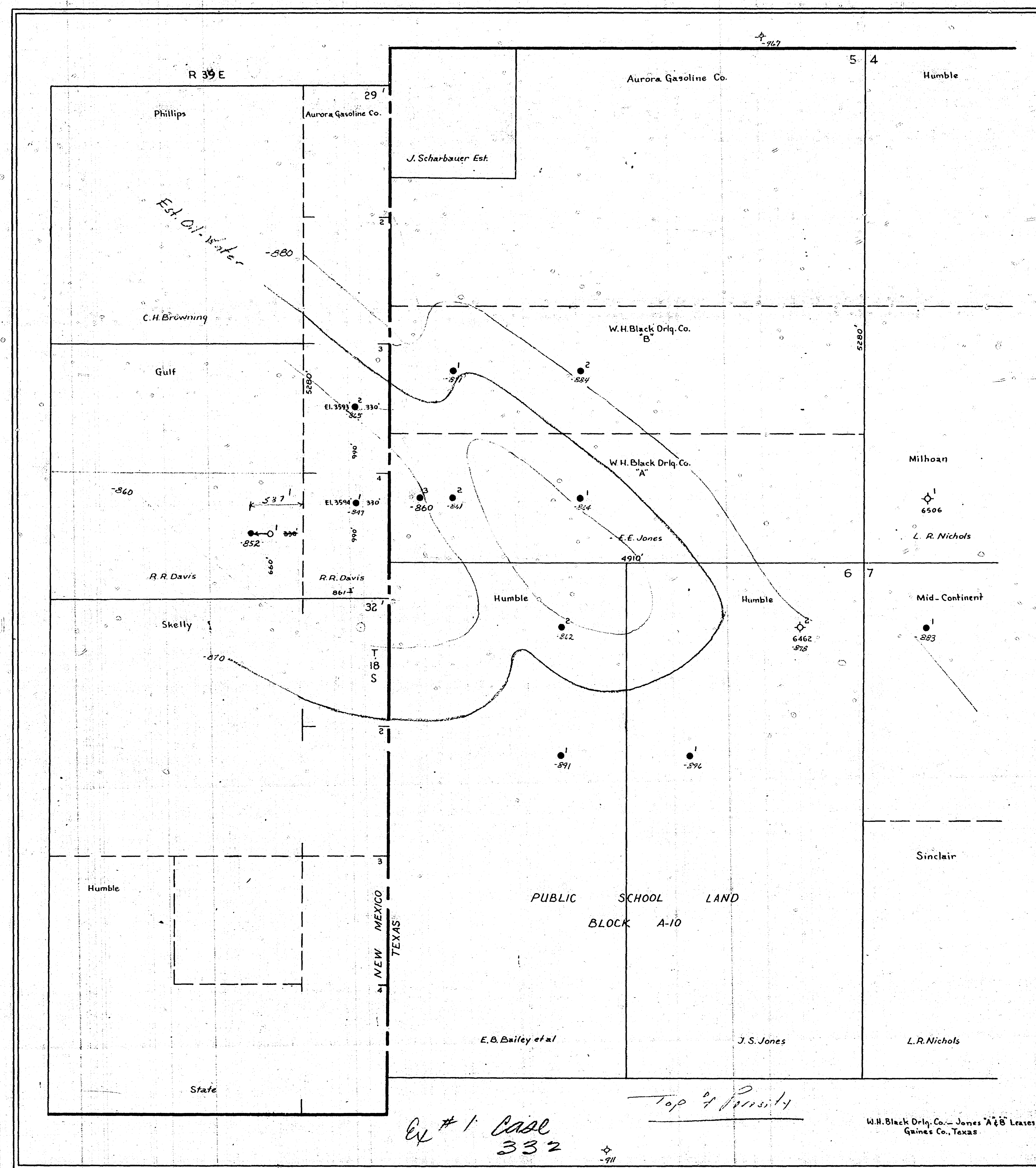


Case No.

332

Large Exhibits

178



LANE RADIOACTIVITY LOG WELLS COMPANY

Location of Well: *Chal 332*
 COMPANY: AURORA GASOLINE COMPANY
 WELL: DAVIS NO. 1
 FIELD: EAST HOBBS
 COUNTY: LEA STATE: N. MEX.
 LOCATION: 330' PSL 990' PSL UNIT 0
 LOT 4 SEC. 29-188-39E

LOG MEAS. FROM KELLY DRIVE BUSHING (RT A) ELEV. 3593'
 DRIG. MEAS. FROM KELLY DRIVE BUSHING (RT A) ELEV. 3593'
 PERM. DATUM G.L. IS 10' BELOW R.T. ELEV. 3594'

TYPE OF LOG	0/R	H-
RUN NO.	1	1
DATE	10-20-51	10-20-51
TOTAL DEPTH (DRILLER) RACK	4469'	4469'
EFFECTIVE DEPTH (DRILLER)	4469'	4469'
TOP OF LOGGED INTERVAL	0	0
BOTTOM OF LOGGED INTERVAL	4469'	4469'
TYPE OF FLUID IN HOLE	MUD	MUD
FLUID LEVEL	FULL	FULL
MAXIMUM RECORDED TEMP.		
NEUTRON SOURCE STRENGTH & TYPE	600W	
SOURCE SPACING - IN.	8.25"	
LENGTH OF MEASURING DEVICE - IN.	36"	
O.D. OF INSTRUMENT - IN.	3 5/8"	3 5/8"
TIME CONSTANT - SECONDS	H	H
LOGGING SPEED FT. MIN.	30-50	35-60
STATISTICAL VARIATION - IN.		
SENSITIVITY REFERENCE	274	275
RECORDED BY	VIVERETTE	VIVERETTE
WITNESSED BY	SIMON	SIMON

CASING RECORD		INTERVAL	
RUN NO.	BIT SIZE	CASING WT.-LB.	FROM R/A LOG
1	15	10-3/4	SURF. TO 317'
1	9 7/8	7 7/8	SURF. TO 313 1/2'
1	6 3/4	5 1/2	SURF. TO 4469'

REMARKS OR OTHER DATA

LANE RADIOACTIVITY LOG WELLS COMPANY

Location of Well: *Chal 332*
 COMPANY: AURORA GASOLINE CO.
 WELL: DAVIS NO. 2
 FIELD: EAST HOBBS
 COUNTY: LEA STATE: N. M.
 LOCATION: 1980' PSL 330' PSL
 SEC. 29-188-39E

LOG MEAS. FROM DRIVE BUSHING ELEV. 3593'
 DRIG. MEAS. FROM DRIVE BUSHING ELEV. 3593'
 PERM. DATUM 10 3/4" BRADEN HEAD ELEV. 3582'

TYPE OF LOG	G/R	H-
RUN NO.	1	1
DATE	11/28/51	11/28/51
TOTAL DEPTH (DRILLER) RACK	6433'	6433'
EFFECTIVE DEPTH (DRILLER)	6433'	6433'
TOP OF LOGGED INTERVAL	1700'	1700'
BOTTOM OF LOGGED INTERVAL	6430'	6430'
TYPE OF FLUID IN HOLE	MUD 9#	MUD 9#
FLUID LEVEL	FULL	FULL
MAXIMUM RECORDED TEMP.		
NEUTRON SOURCE STRENGTH & TYPE	600W	
SOURCE SPACING - IN.	8.25"	
LENGTH OF MEASURING DEVICE - IN.	36"	
O.D. OF INSTRUMENT - IN.	3 5/8"	3 5/8"
TIME CONSTANT - SECONDS	H	H
LOGGING SPEED FT. MIN.	35-30	40-100
STATISTICAL VARIATION - IN.		
SENSITIVITY REFERENCE	274	275
RECORDED BY	RUHON	RUHON
WITNESSED BY	SIMON	SIMON

CASING RECORD		INTERVAL	
RUN NO.	BIT SIZE	CASING WT.-LB.	FROM R/A LOG
1	13 3/8	10 3/4	SURF. TO 1865'
1	9 3/8		TO
1	7 7/8		TO
1	4 5/4		TO

LANE RADIOACTIVITY LOG WELLS COMPANY

Location of Well: *Chal 332*
 COMPANY: GULF OIL CORP.
 WELL: DAVIS NO. 1
 FIELD: EAST HOBBS
 COUNTY: LEA STATE: N. M.
 LOCATION: 660' PSL-2103' PSL
 3607' D.P. SEC. 29-188-39E

LOG MEAS. FROM ROTARY TABLE ELEV. 3608'
 DRIG. MEAS. FROM ROTARY TABLE ELEV. 3608'
 PERM. DATUM TUBING HEAD FLANGE ELEV. 3597.74'

TYPE OF LOG	0/R	H-
RUN NO.	1	1
DATE	12-9-51	12-9-51
TOTAL DEPTH (DRILLER) STRAIN	4467'	4467'
EFFECTIVE DEPTH (DRILLER)	4467'	4467'
TOP OF LOGGED INTERVAL	0	0
BOTTOM OF LOGGED INTERVAL	4466'	4466'
TYPE OF FLUID IN HOLE	MUD	MUD
FLUID LEVEL		
MAXIMUM RECORDED TEMP.		
NEUTRON SOURCE STRENGTH & TYPE	600W	
SOURCE SPACING - IN.	8.25"	
LENGTH OF MEASURING DEVICE - IN.	36"	
O.D. OF INSTRUMENT - IN.	3 5/8"	3 5/8"
TIME CONSTANT - SECONDS	H	H
LOGGING SPEED FT. MIN.	30	30
STATISTICAL VARIATION - IN.		
SENSITIVITY REFERENCE	274	275
RECORDED BY	SCHLOTTERBACK	LEPLEY
WITNESSED BY	LEPLEY	LEPLEY

2908
4468 TO
4467 TO
4466 TO

CASING RECORD		INTERVAL	
RUN NO.	BIT SIZE	CASING WT.-LB.	FROM R/A LOG
1	11	8 5/8	SURF. TO 494'
1	7 7/8	5 1/2	SURF. TO 508'
			TO 4426'
			TO
			TO

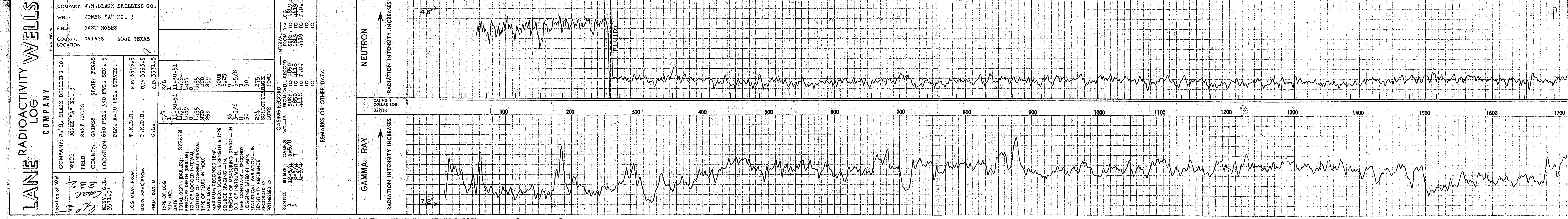
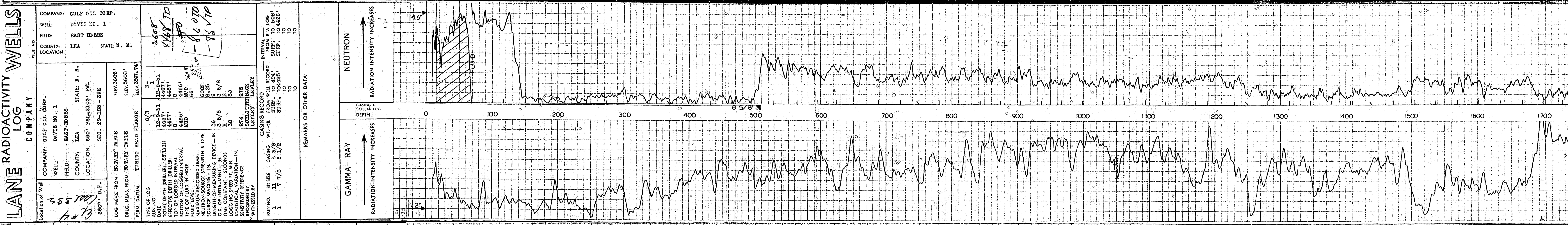
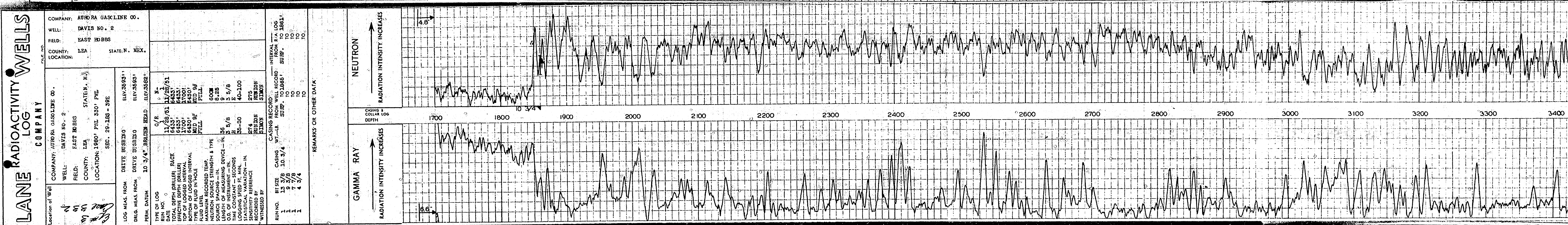
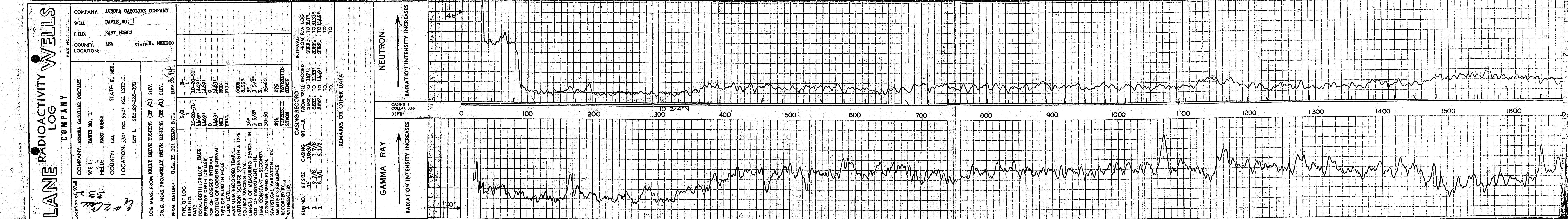
LANE RADIOACTIVITY LOG WELLS COMPANY

Location of Well: *Chal 332*
 COMPANY: W. H. SLACK DRILLING CO.
 WELL: JONES "A" NO. 3
 FIELD: EAST HOBBS
 COUNTY: GAINES STATE: TEXAS
 LOCATION: 660 PSL. 330 PSL. SEC. 5
 ELK. A-10 PSL. SURVEY.
 ELEV. G.L. 3571.5'

LOG MEAS. FROM T.K.D.B. ELEV. 3593.5
 DRIG. MEAS. FROM T.K.D.B. ELEV. 3593.5
 PERM. DATUM G.L. ELEV. 3571.5'

TYPE OF LOG	G/R	H/L
RUN NO.	1	1
DATE	11-30-51	11-30-51
TOTAL DEPTH (DRILLER) STRAIN	4455'	4455'
EFFECTIVE DEPTH (DRILLER)	4455'	4455'
TOP OF LOGGED INTERVAL	0	0
BOTTOM OF LOGGED INTERVAL	4455'	4455'
TYPE OF FLUID IN HOLE	MUD	MUD
FLUID LEVEL		
MAXIMUM RECORDED TEMP.		
NEUTRON SOURCE STRENGTH & TYPE	600W	
SOURCE SPACING - IN.	8.25"	
LENGTH OF MEASURING DEVICE - IN.	36"	
O.D. OF INSTRUMENT - IN.	3-5/8"	3-5/8"
TIME CONSTANT - SECONDS	H	H
LOGGING SPEED FT. MIN.	30	30
STATISTICAL VARIATION - IN.		
SENSITIVITY REFERENCE	274	275
RECORDED BY	SCHLOTTERBACK	LEPLEY
WITNESSED BY	LEPLEY	LEPLEY

CASING RECORD		INTERVAL	
RUN NO.	BIT SIZE	CASING WT.-LB.	FROM R/A LOG
1	12-3/4	9-5/8	SURF. TO 1850
1	8-3/4	7	SURF. TO 4418
1	4-5/4		SURF. TO 4419
			TO T.D.
			TO
			TO



COMPANY: ATRORA GASOLINE COMPANY
 WELL: DAVIS NO. 1
 FIELD: EAST BEARS
 COUNTY: LEA
 LOCATION: STATE, N. MEXICO

LOG MEAS FROM: DRIVE BEARING
 FEEL: 10 3/4" BRIDGE HEAD

TYPE OF LOG: 1
 TOTAL DEPTH DRILLER: 1000
 BOTTOM OF LOGGED INTERVAL: 1000
 LOG MEAS FROM: DRIVE BEARING
 FEEL: 10 3/4" BRIDGE HEAD

CASING RECORD
 INTERVAL: 1000 TO 1000
 WT-LB: 100
 WT-FT: 100
 WT-SP: 100

COMPANY: ATRORA GASOLINE CO.
 WELL: DAVIS NO. 2
 FIELD: EAST BEARS
 COUNTY: LEA
 LOCATION: STATE, N. MEX.

LOG MEAS FROM: DRIVE BEARING
 FEEL: 10 3/4" BRIDGE HEAD

TYPE OF LOG: 1
 TOTAL DEPTH DRILLER: 1000
 BOTTOM OF LOGGED INTERVAL: 1000
 LOG MEAS FROM: DRIVE BEARING
 FEEL: 10 3/4" BRIDGE HEAD

CASING RECORD
 INTERVAL: 1000 TO 1000
 WT-LB: 100
 WT-FT: 100
 WT-SP: 100

COMPANY: OIL CO. OORP.
 WELL: DAVIS NO. 1
 FIELD: EAST BEARS
 COUNTY: LEA
 LOCATION: STATE, N. M.

LOG MEAS FROM: DRIVE BEARING
 FEEL: 10 3/4" BRIDGE HEAD

TYPE OF LOG: 1
 TOTAL DEPTH DRILLER: 1000
 BOTTOM OF LOGGED INTERVAL: 1000
 LOG MEAS FROM: DRIVE BEARING
 FEEL: 10 3/4" BRIDGE HEAD

CASING RECORD
 INTERVAL: 1000 TO 1000
 WT-LB: 100
 WT-FT: 100
 WT-SP: 100

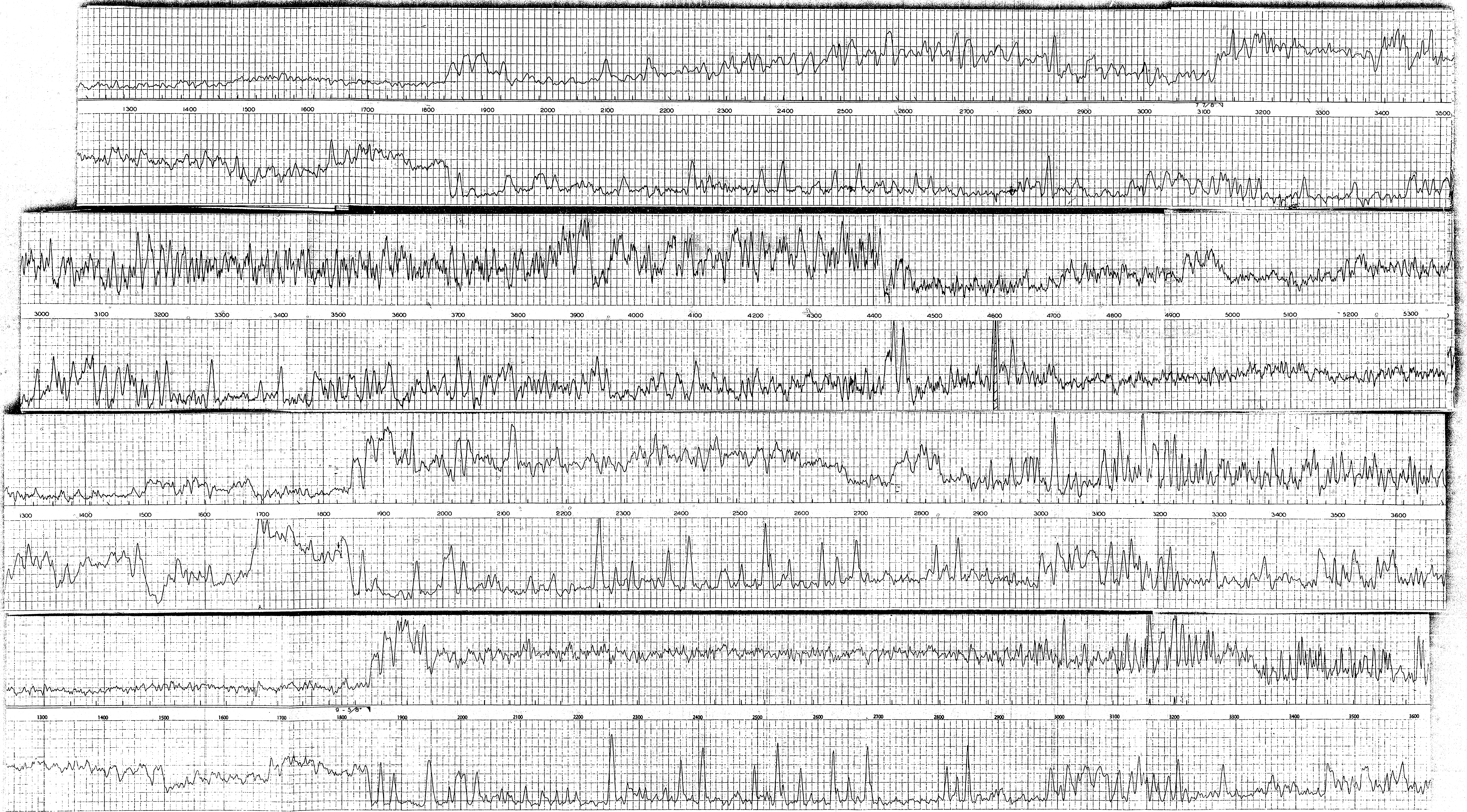
COMPANY: H.H. LACK DRILLING CO.
 WELL: JONES 'A' C. 1
 FIELD: EAST BEARS
 COUNTY: DALLAS
 LOCATION: STATE, TEXAS

LOG MEAS FROM: DRIVE BEARING
 FEEL: 10 3/4" BRIDGE HEAD

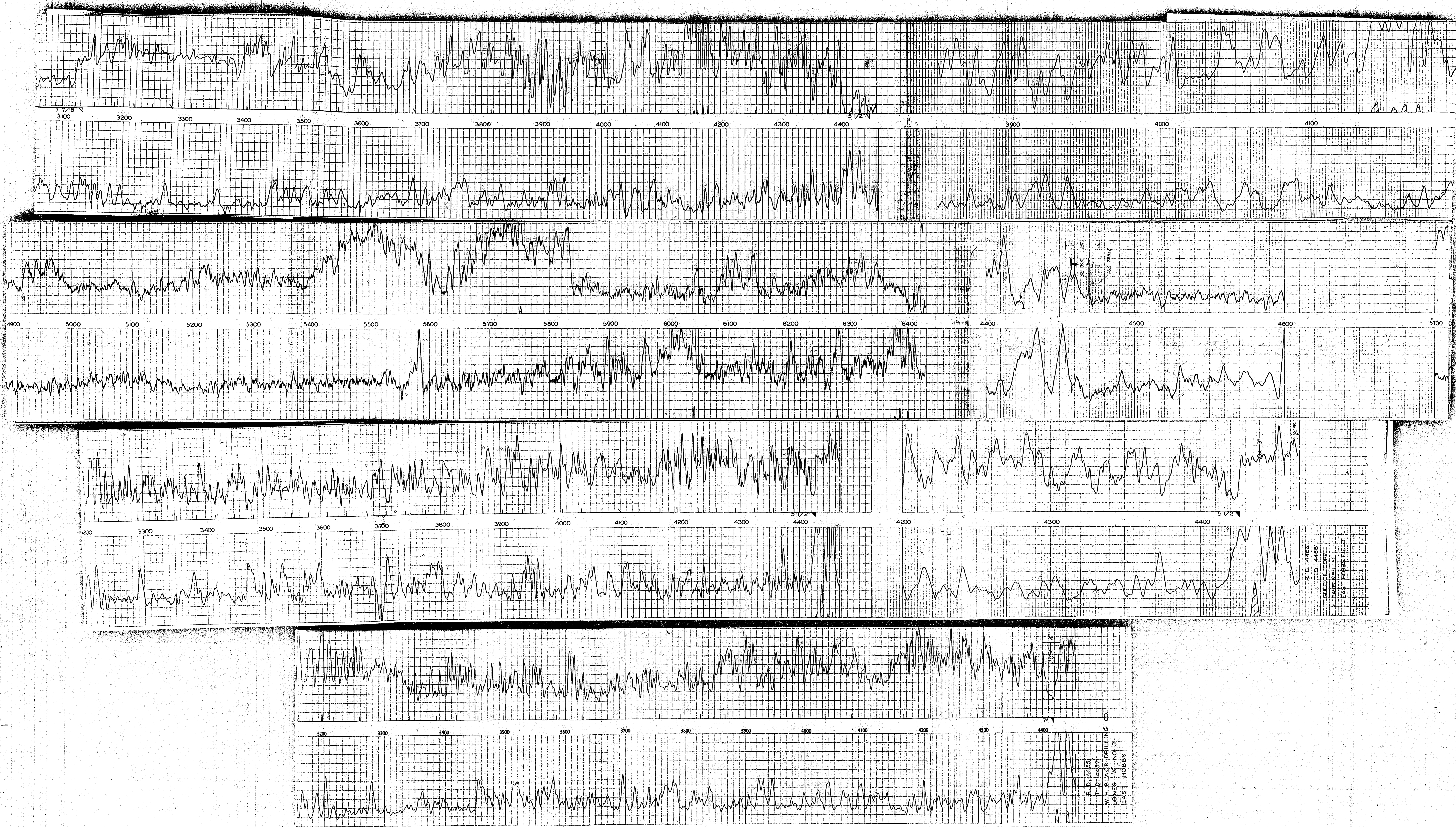
TYPE OF LOG: 1
 TOTAL DEPTH DRILLER: 1000
 BOTTOM OF LOGGED INTERVAL: 1000
 LOG MEAS FROM: DRIVE BEARING
 FEEL: 10 3/4" BRIDGE HEAD

CASING RECORD
 INTERVAL: 1000 TO 1000
 WT-LB: 100
 WT-FT: 100
 WT-SP: 100

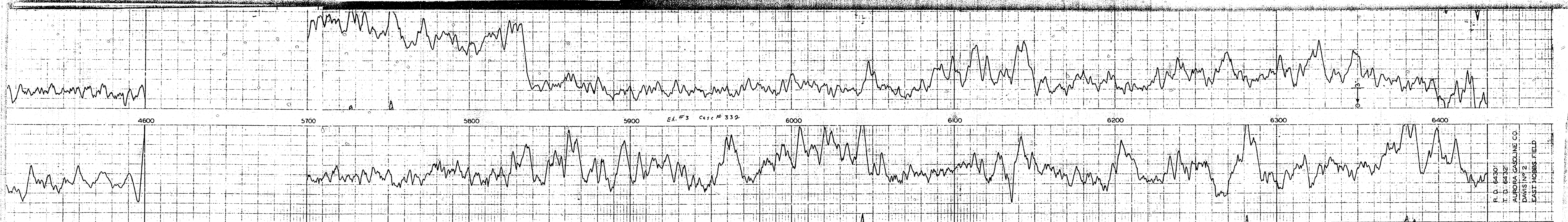
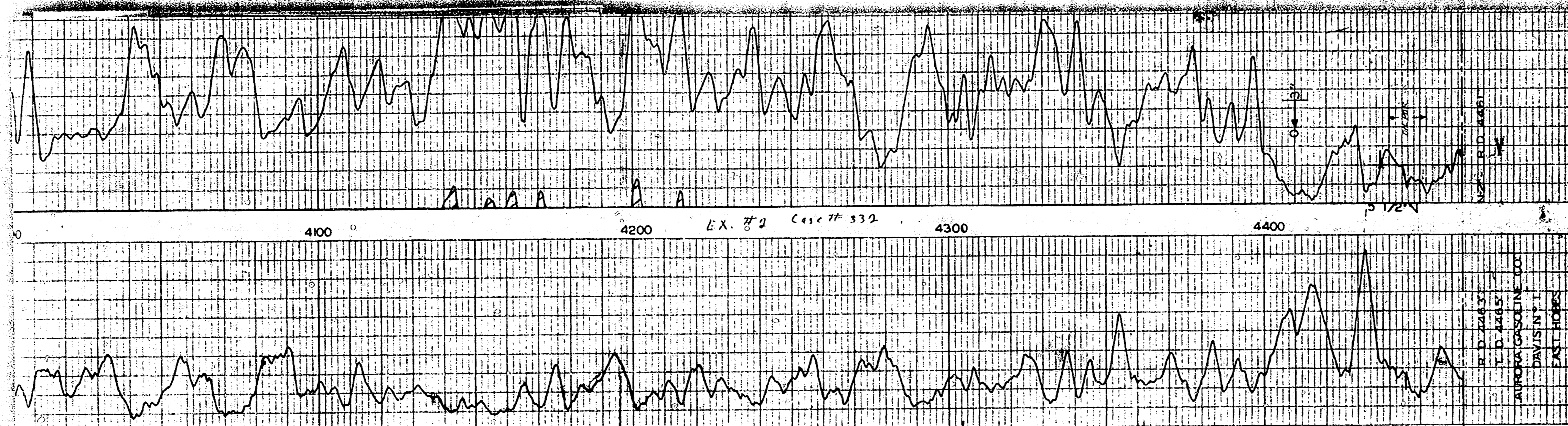
180



181



182



183