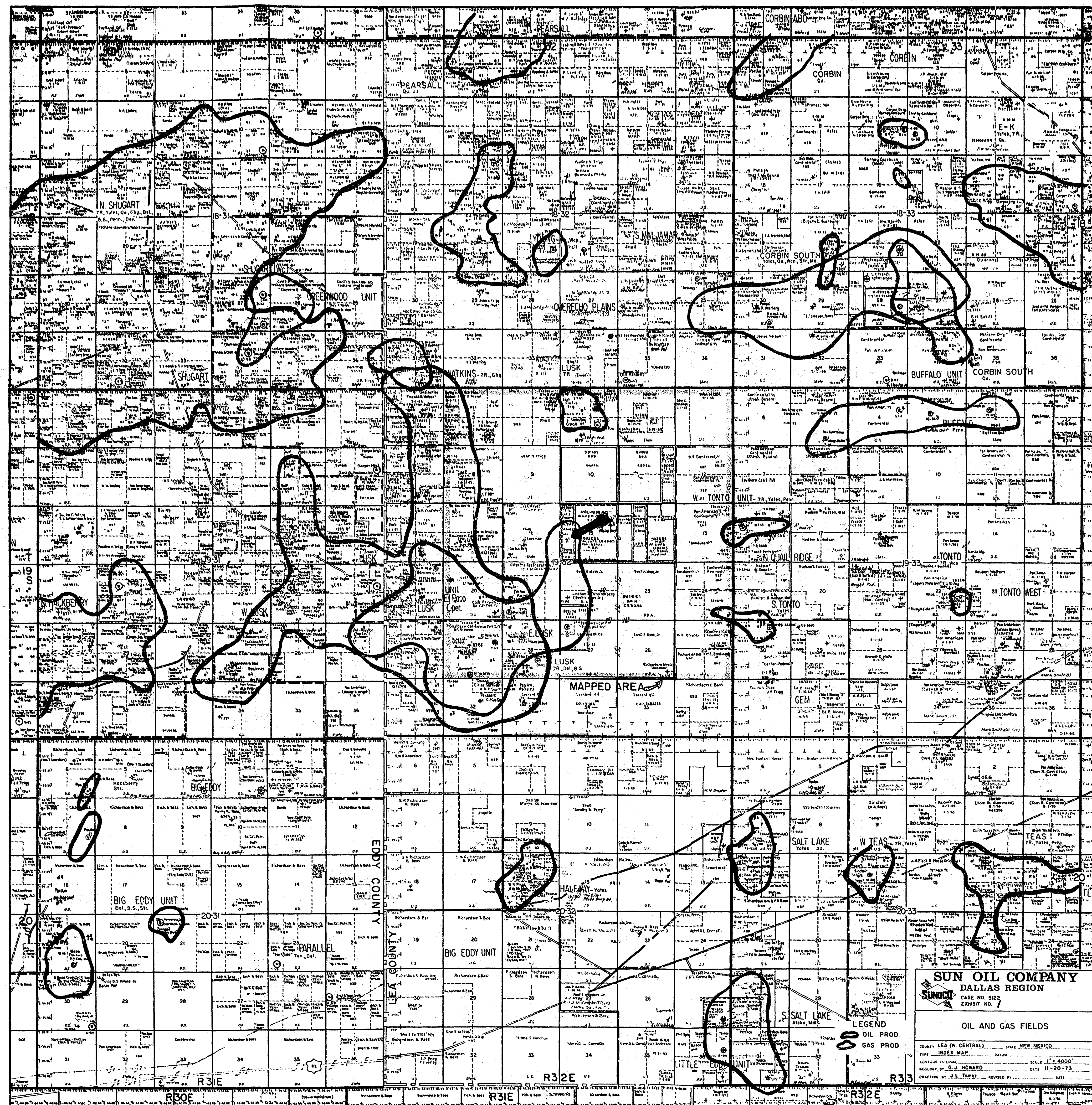
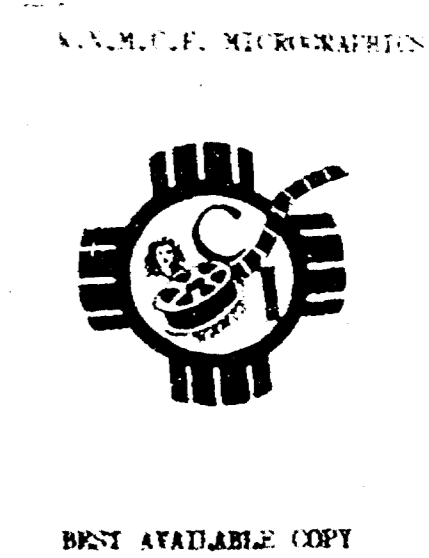
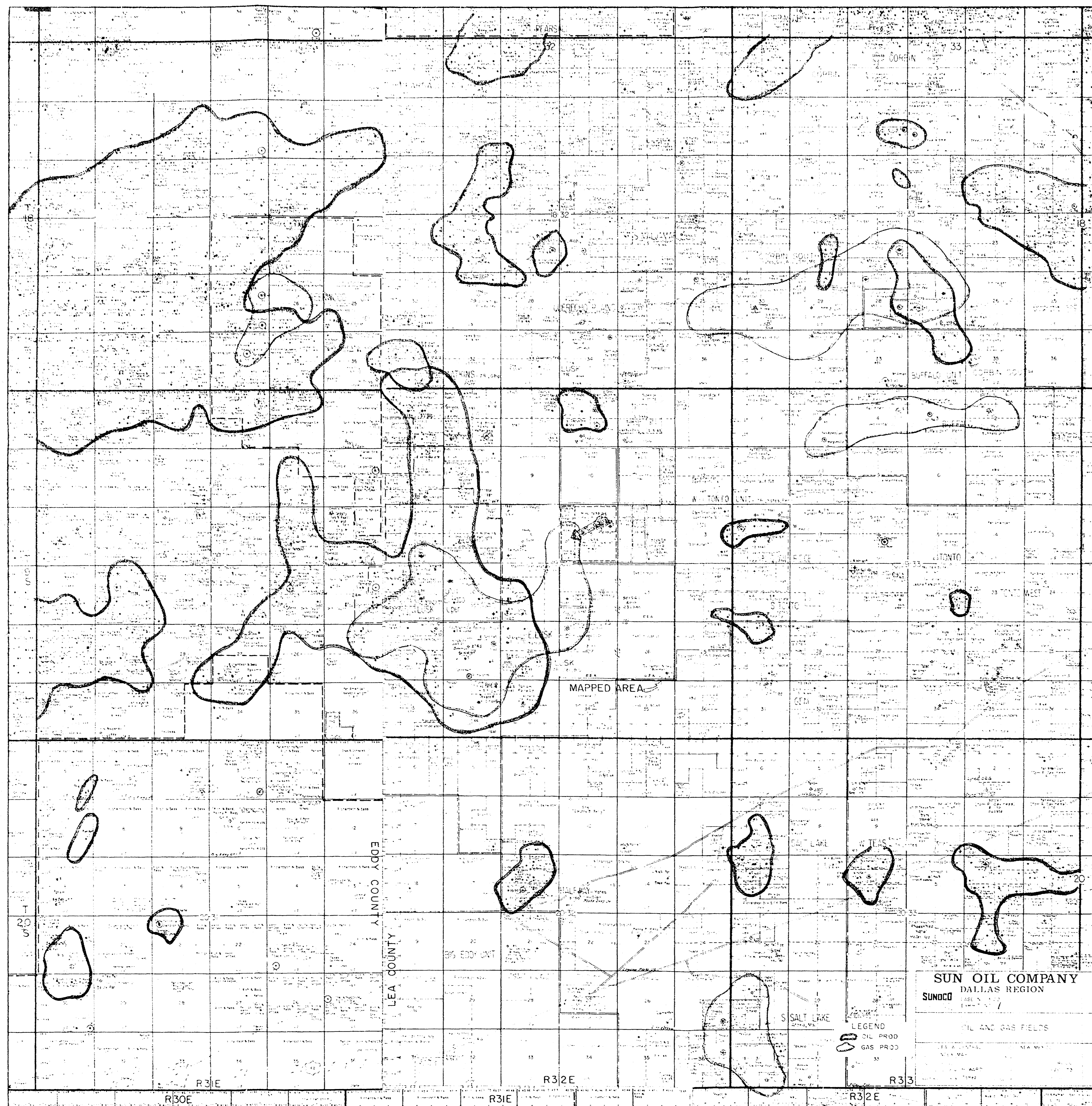


Case No.
5122

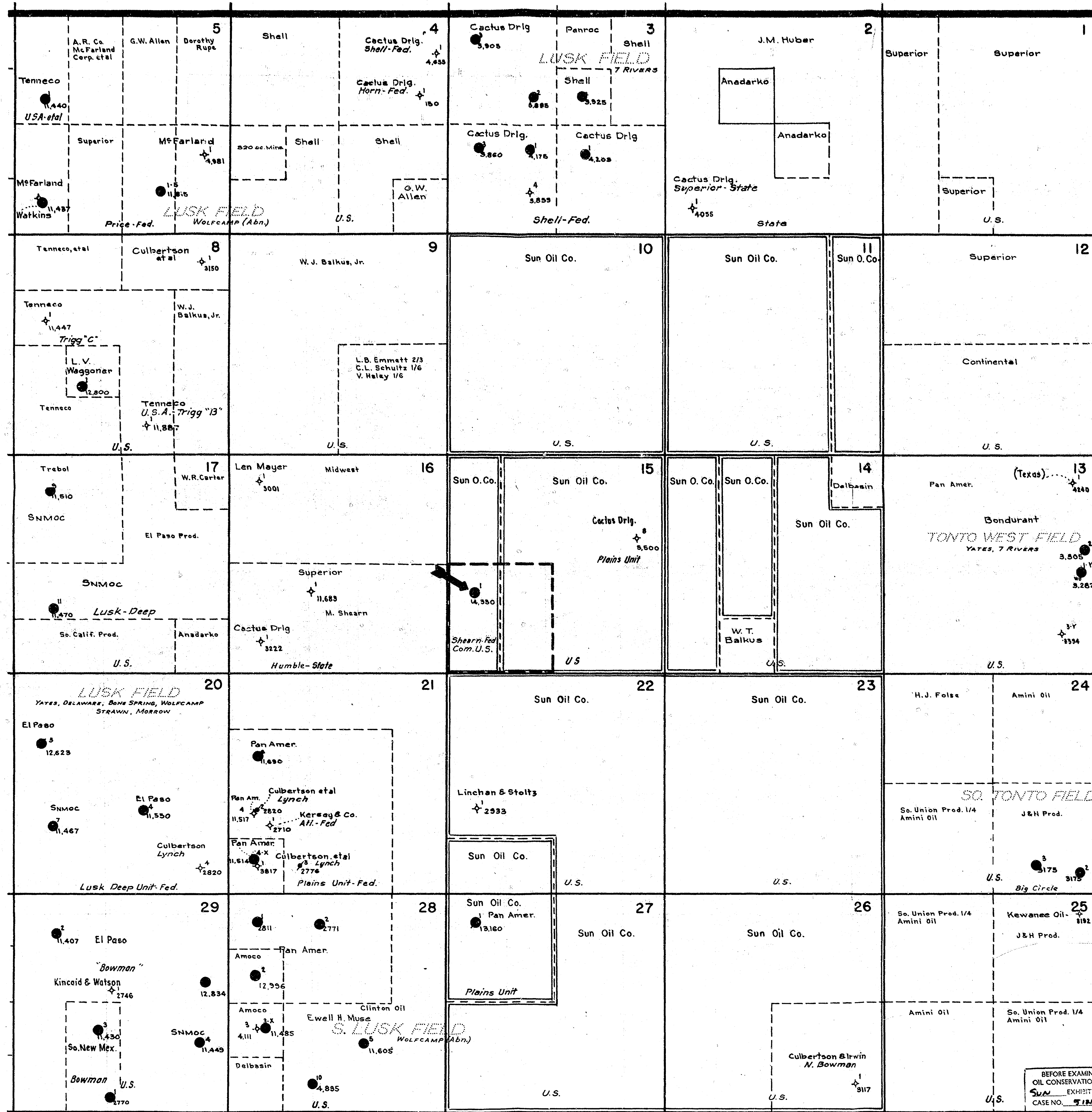
Large Exhibits







R.-32-E.



T.
19
S.

T.
19
S.

LEGEND

- PRODUCING ZONES
- Seven Rivers
 - Yates
 - Delaware
 - Wolfcamp
 - Strawn
 - Morrow

- Oil Well
- * Gas Well
- + Plugged & Abandoned
- ✖ Oil Abandoned
- * Gas Abandoned

Proposed Proration Unit

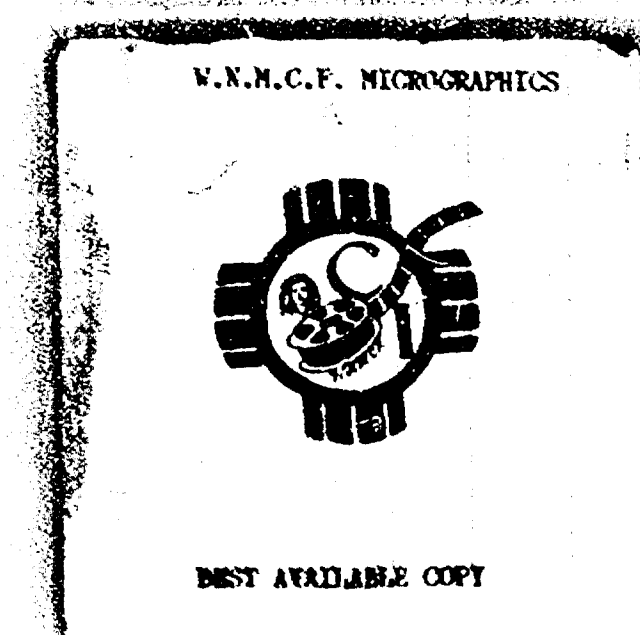
R.-32-E.

Case No. 8122
Exhibit No. 2

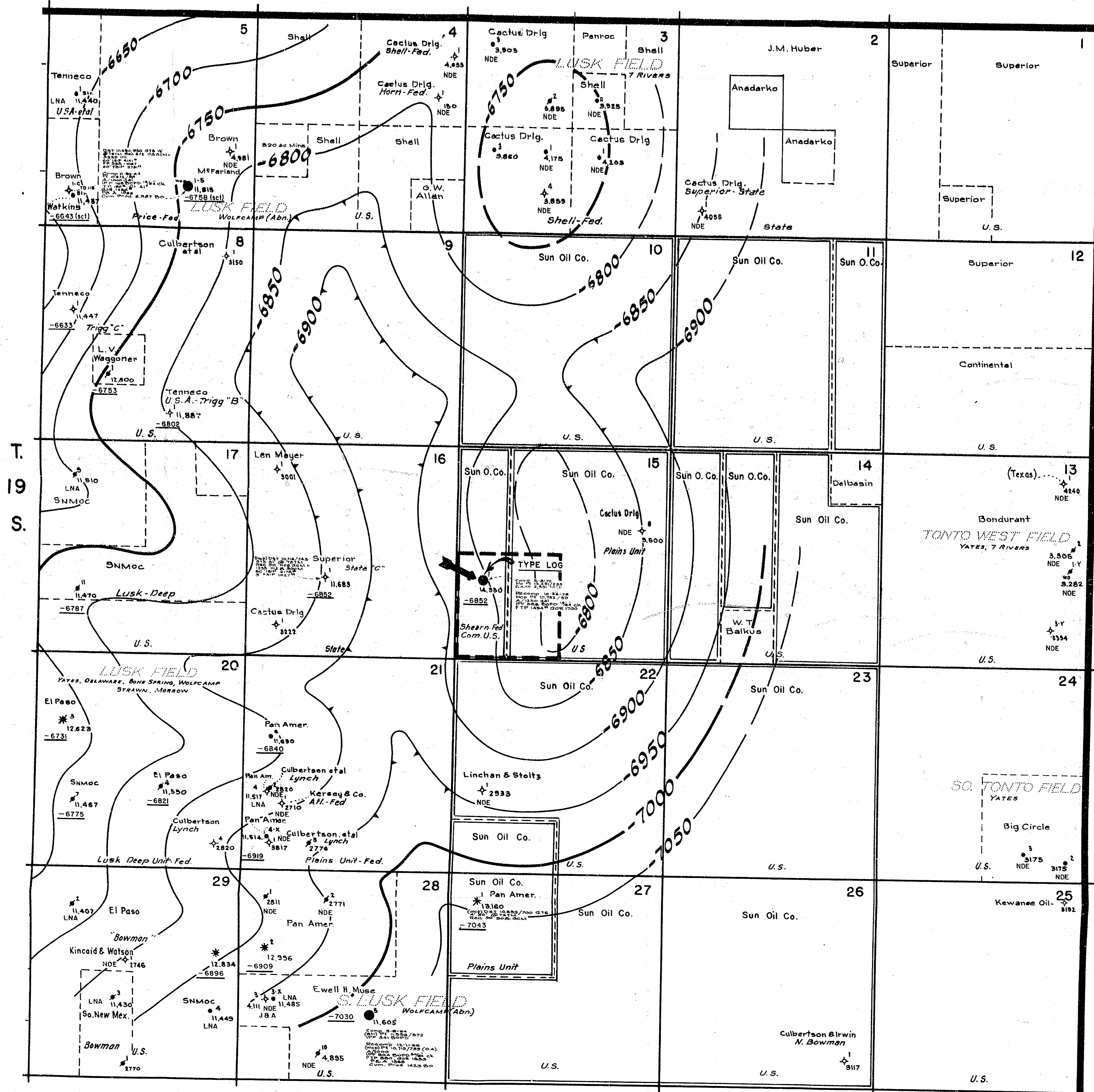
SUN OIL COMPANY
DALLAS REGION

LUSK FIELD AREA

COUNTY: ... STATE: New Mexico
TYPE: Producing Zone Index And Land Plat.
CONTOUR INTERVAL: ... SCALE: 1"=1,000'
GEOLOGY BY: ... DATE: 11-16-73
DRAWING BY: Richardson REVISED BY: ... DATE: ...



R. - 32 - E.

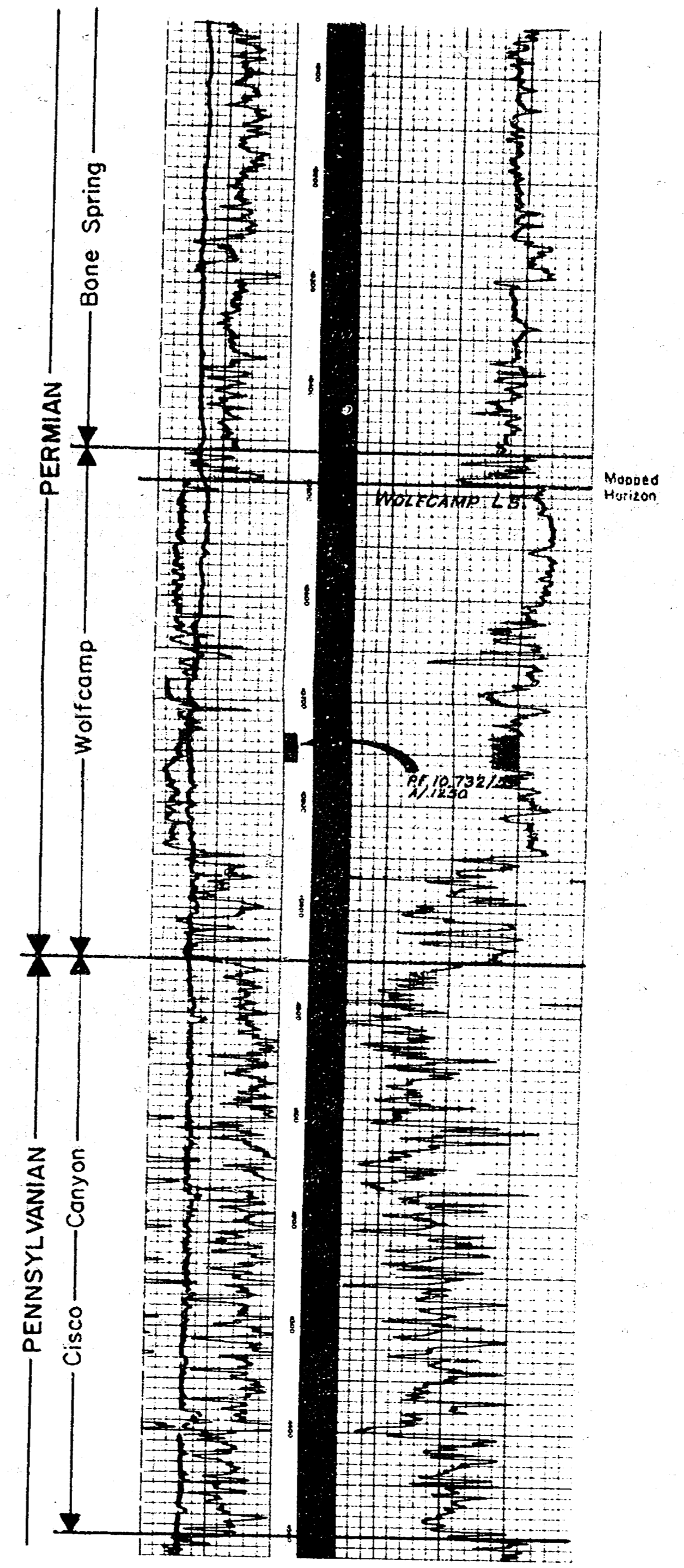


R. - 32 - E.
LEGEND

● Wolfcamp Production	NDE Not Deep Enough
• Oil Well	LNA Log Not Available
☆ Gas Well	Sct. Scout Top
⊕ Plugged & Abandoned	
⊖ Oil Abandoned	
✱ Gas Abandoned	
[] Proposed Proration Unit	

TYPE LOG

COMPANY Sun Oil Company
 WELL Shearn-Federal Com. No. 1
 LOCATION 1980' FSL. A 680' FWL
 Sec. 15 TWP. 19 Sp. Rge. 32 E.
 COUNTY Lea STATE New Mexico
 ELEVATION 3638 DF TO 14,230



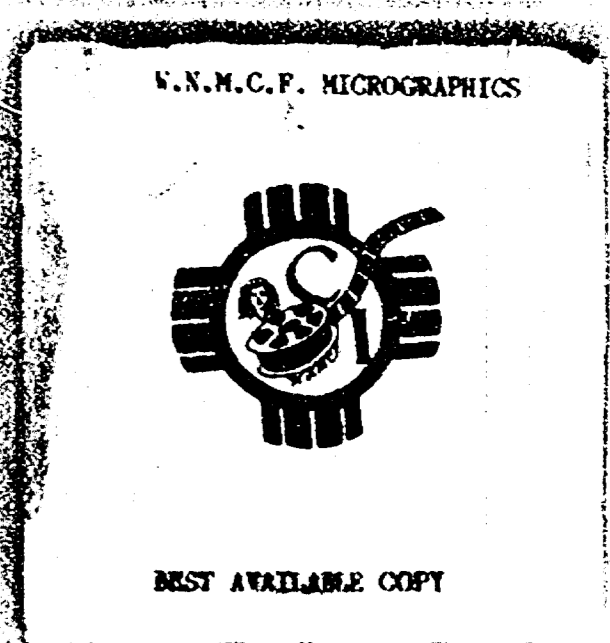
BEFORE EXAMINER STATES
 OIL CONSERVATION COMMISSION
 Case No. 5122 EXHIBIT NO. 3
 Submitted by J.P.S.
 Hearing Date

Case No. 5122
 Exhibit No. 3

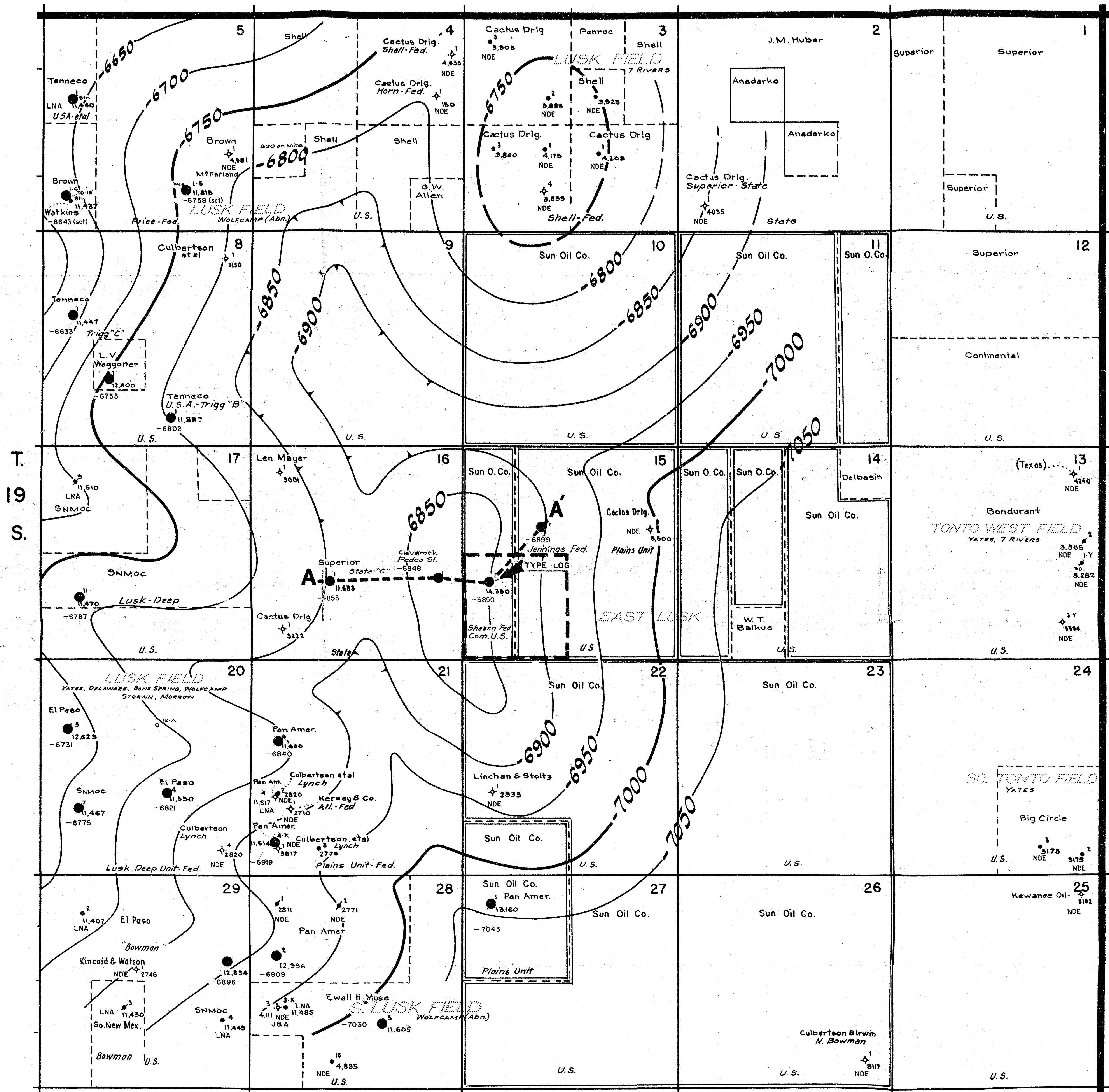
SUN OIL COMPANY
 DALLAS REGION

LUSK FIELD AREA

COUNTY Lea STATE New Mexico
 TYPE Structure DATUM Top Wolfcamp L.S.
 CONTOUR INTERVAL 50' SCALE 1" = 1000'
 GEOLOGY by G.J. Howard DATE 10-19-73
 DRAFTING by McKinley REVISED BY DATE



R. - 32 - E.



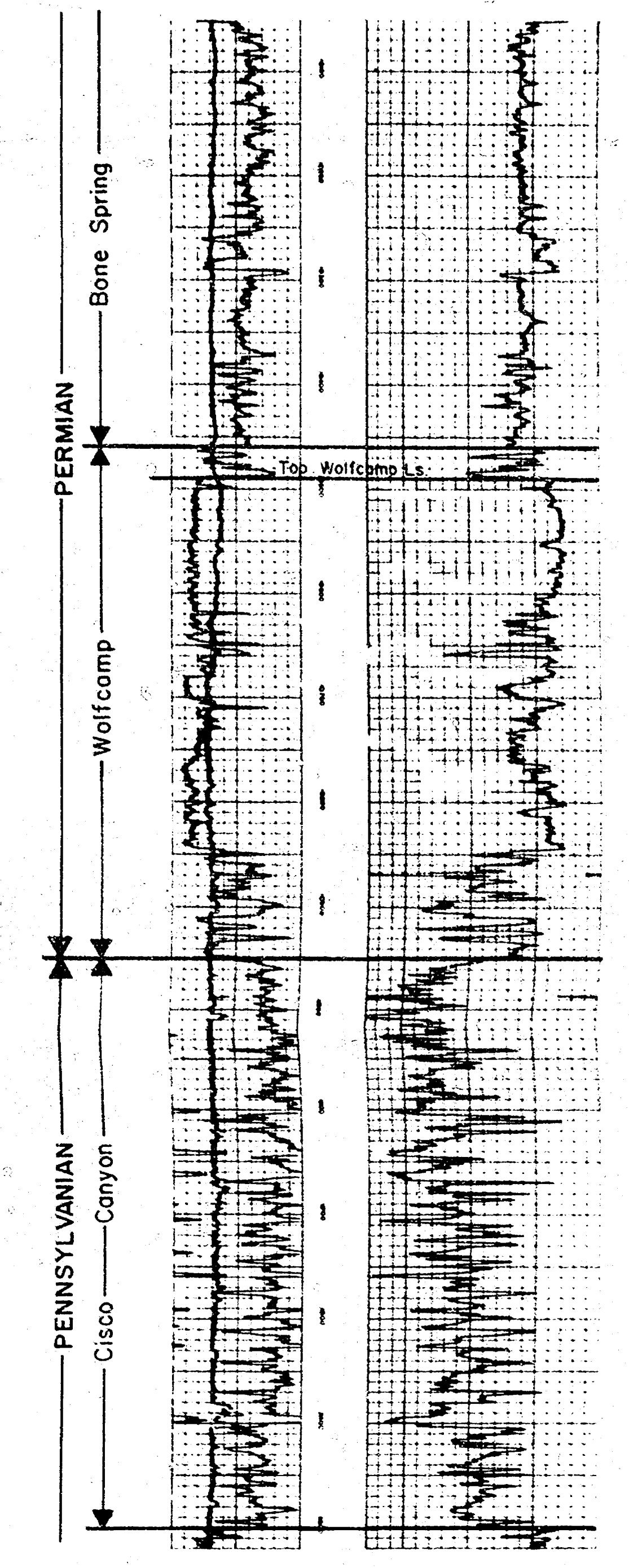
R. - 32 - E.

LEGEND

- Wolfcamp Production
- Wolfcamp Penetration
- NDE Not Deep Enough
- LNA Log Not Available
- Sct. Scout Top

□ Proposed Proration Unit

TYPE LOG
SUN OIL COMPANY
Shearn Federal Comm. No. 1



Case No. 5122
Exhibit No. G-1

BEFORE EXAMINER NUTTER
OIL CONSERVATION COMMISSION
STATE EXHIBIT NO. 1
CASE NO. 6722

SUN OIL COMPANY
DALLAS REGION

**EAST LUSK-
WOLFCAMP OIL POOL**

COUNTY ... LEO STATE ... New Mexico
TYPE ... Structure DATUM Top Wolfcamp Limestone
CONTOUR INTERVAL ... 50' SCALE ... 1"=1000'
GEOLOGY BY ... G.J. Howard DATE ... 10-19-73
DRAWING BY ... McKinley REVISOR ... W.L. Larson DATE ... Feb. 1975



A

Superior Oil Company
State No. 1-C
Elevation 3628 KB

Cleverock Energy Corp.
Cleverock - Padco State No. 1
Elevation 3629 KB

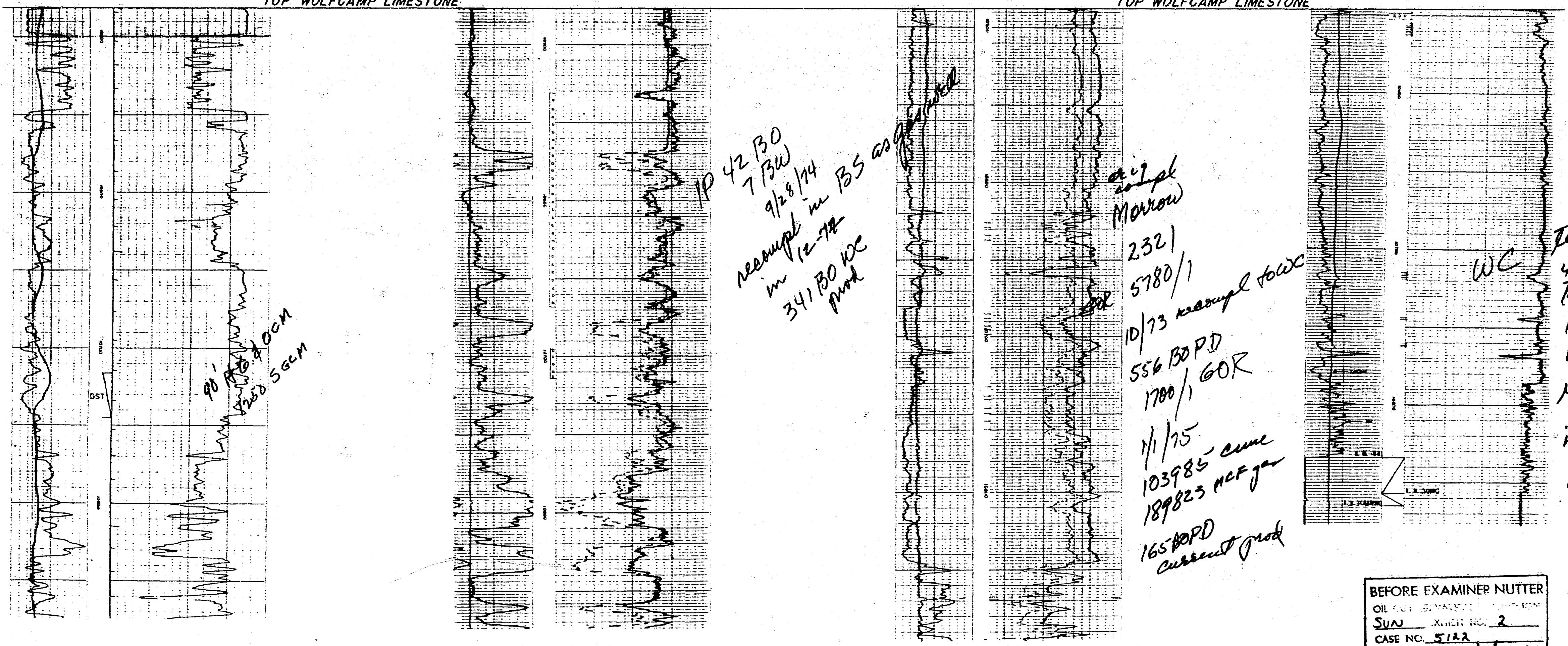
Sun Oil Company
Shearn Federal Comm. No. 1
Elevation 3638 KB

Sun Oil Company
Jennings Federal No. 1
Elevation 3648 KB

A'

TOP WOLF CAMP LIMESTONE

TOP WOLF CAMP LIMESTONE



BEFORE EXAMINER NUTTER
OIL COMPANY
SUN
CASE NO. 5122

CASE NO. 5122 EXHIBIT NO. G-2
SUN OIL COMPANY
DALLAS REGION
EAST LUSK - WOLF CAMP OIL POOL
LEA COUNTY, NEW MEXICO
STRATIGRAPHIC CROSS SECTION A-A'
DATUM: TOP WOLF CAMP LIMESTONE
VERTICAL SCALE: 1"=40' HORIZONTAL SCALE: NONE
K.W. LARSON FEBRUARY 1975

