

Case No.

6058

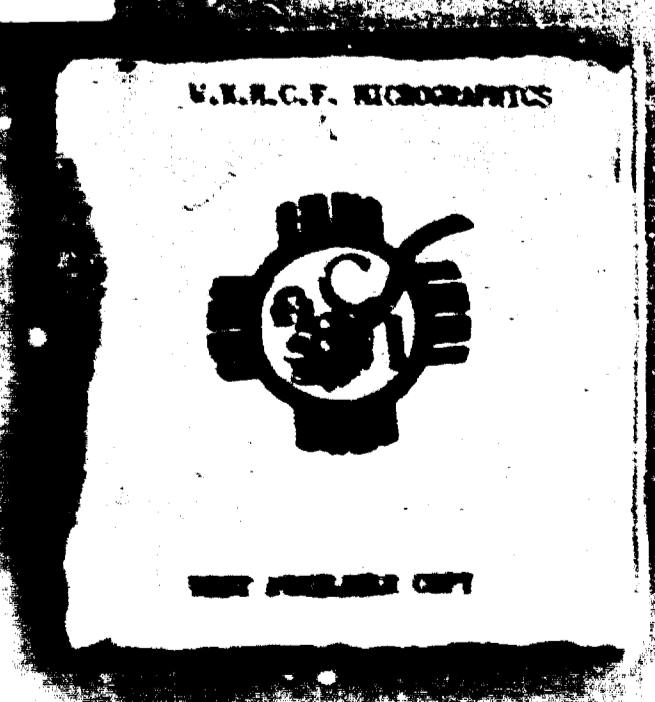
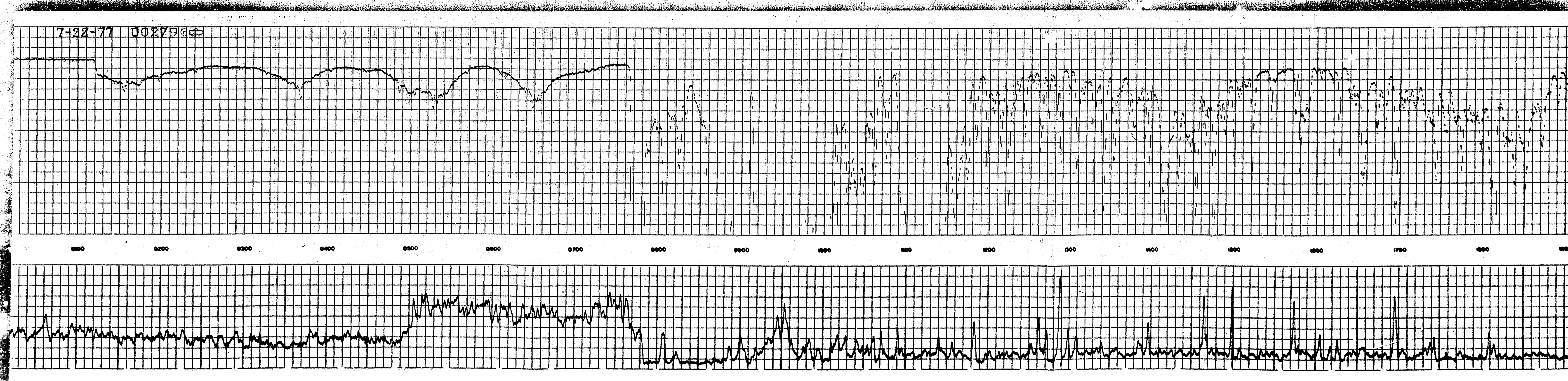
Large Exhibits



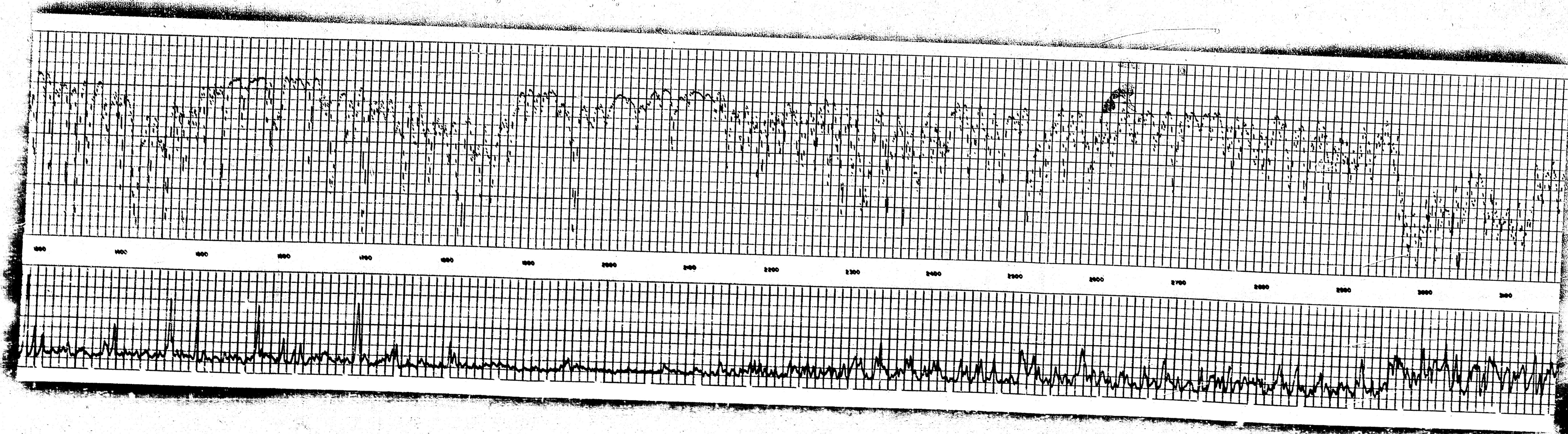




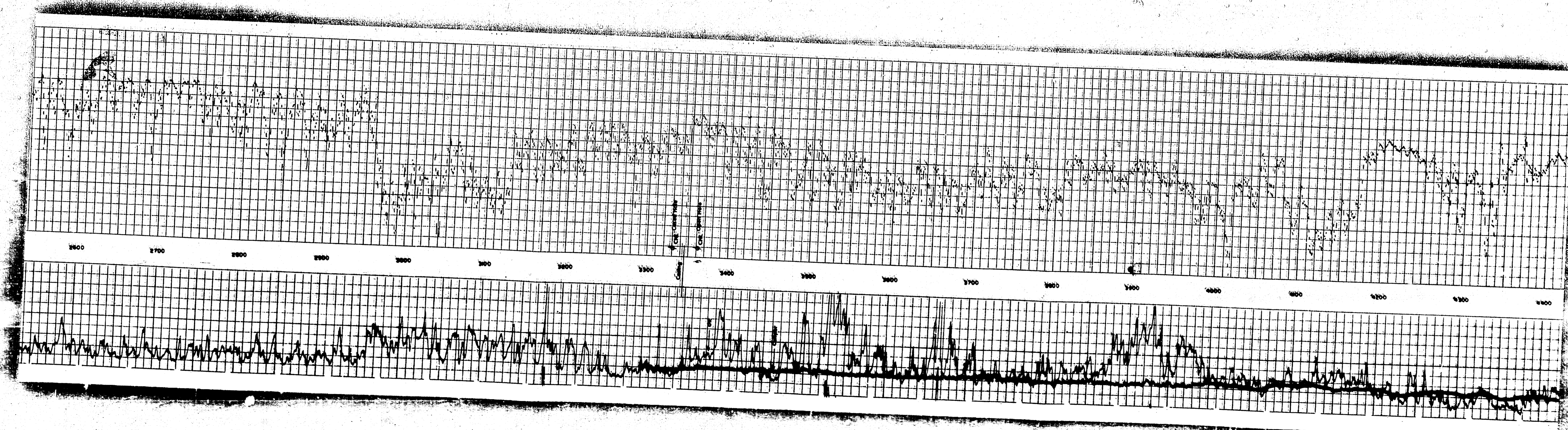




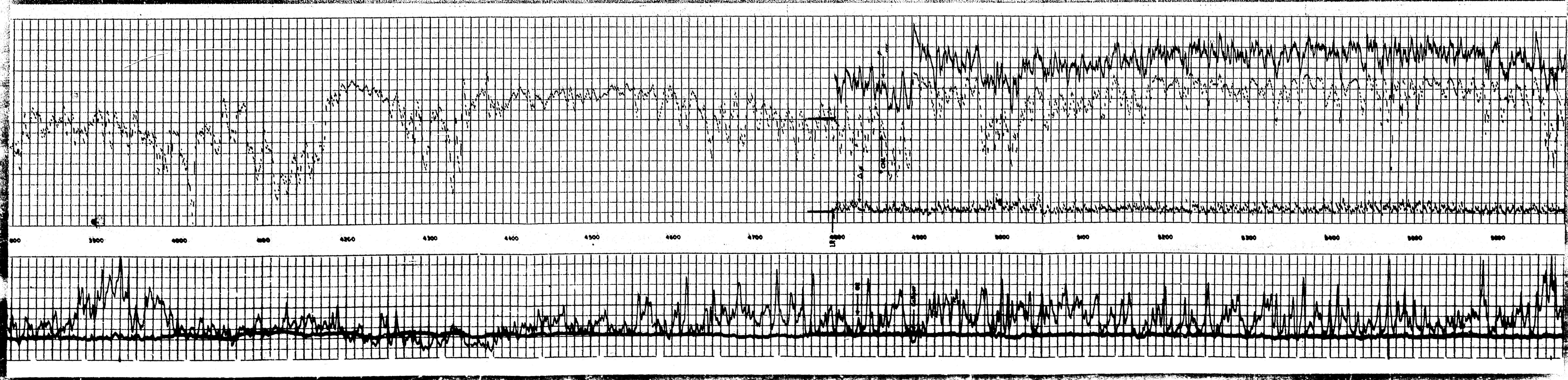




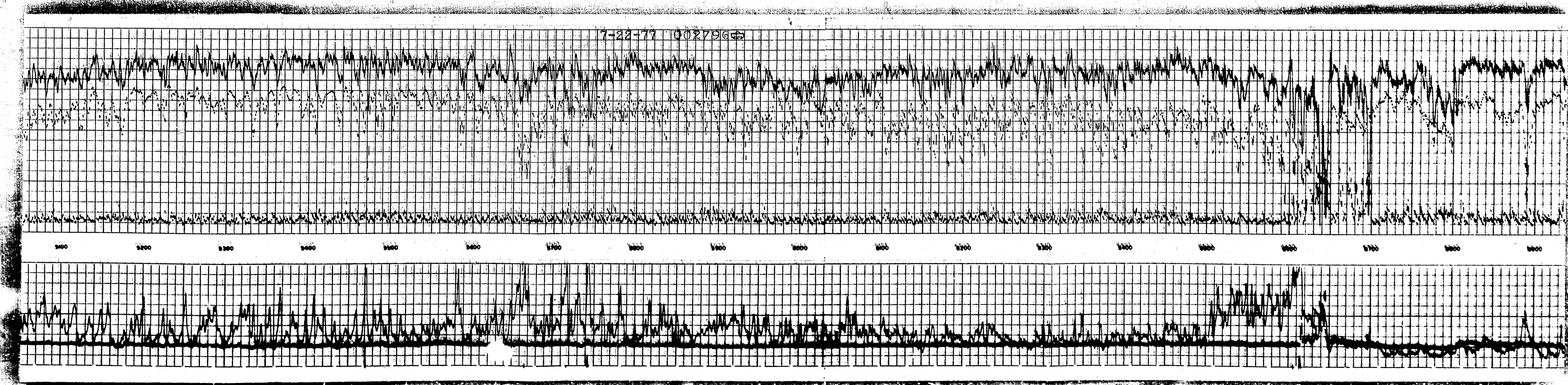




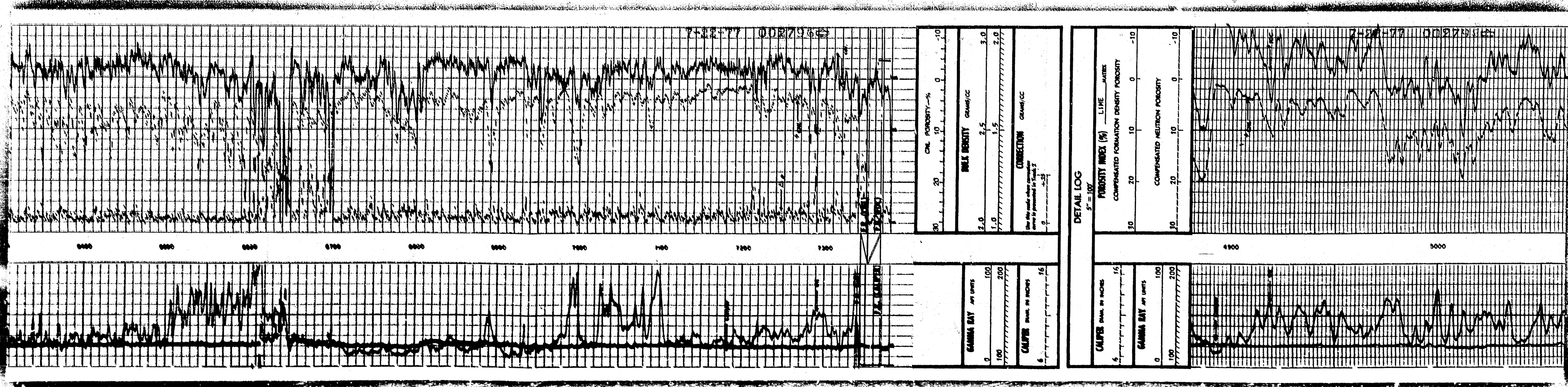








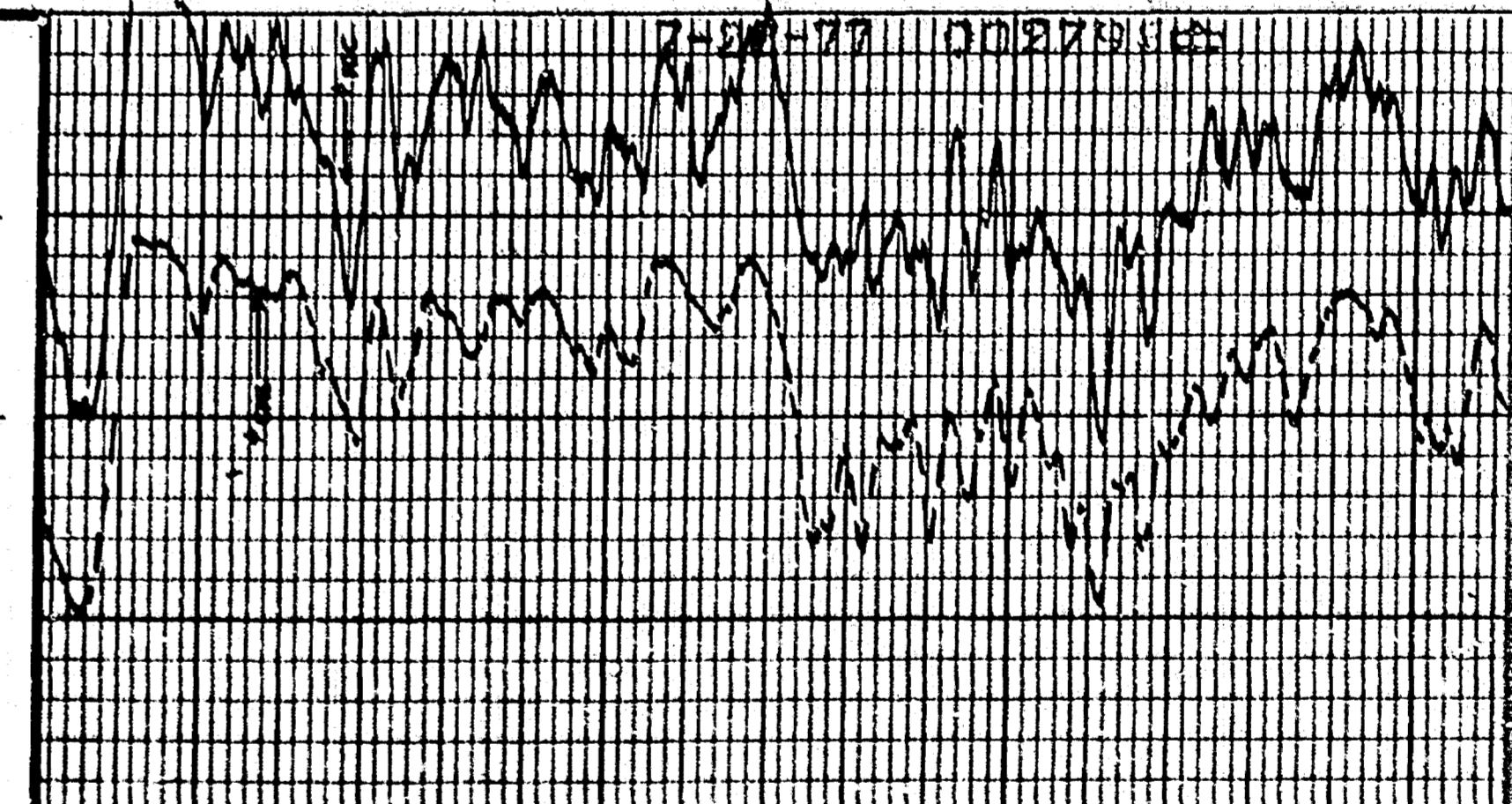




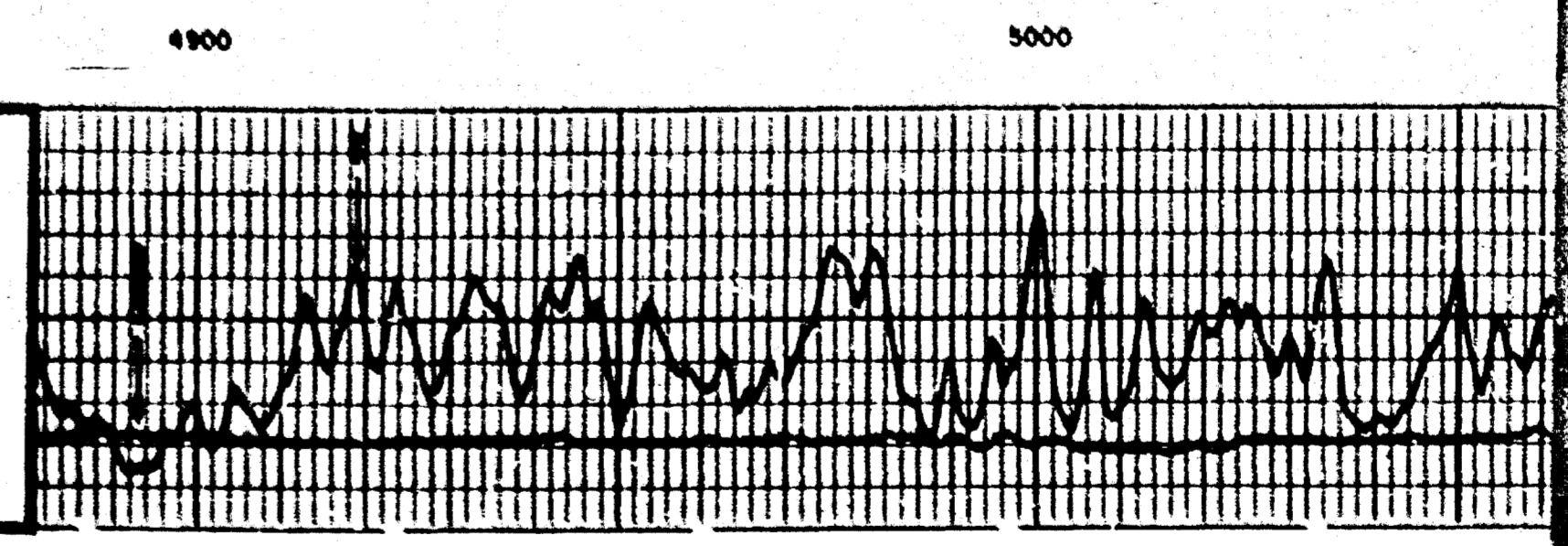
CEM. POROSITY-%	0
WELL DENSITY GRAM/CC	2.5
GAMMA RAY GRAM/CC	1.5
COMPARATED FORMATION POROSITY	2.0
CORRECTION GRAM/CC	0

DETAIL LOG  
F-107

WELL DENSITY GRAM/CC	2.5
GAMMA RAY GRAM/CC	1.5
COMPARATED FORMATION POROSITY	2.0
CORRECTION GRAM/CC	0



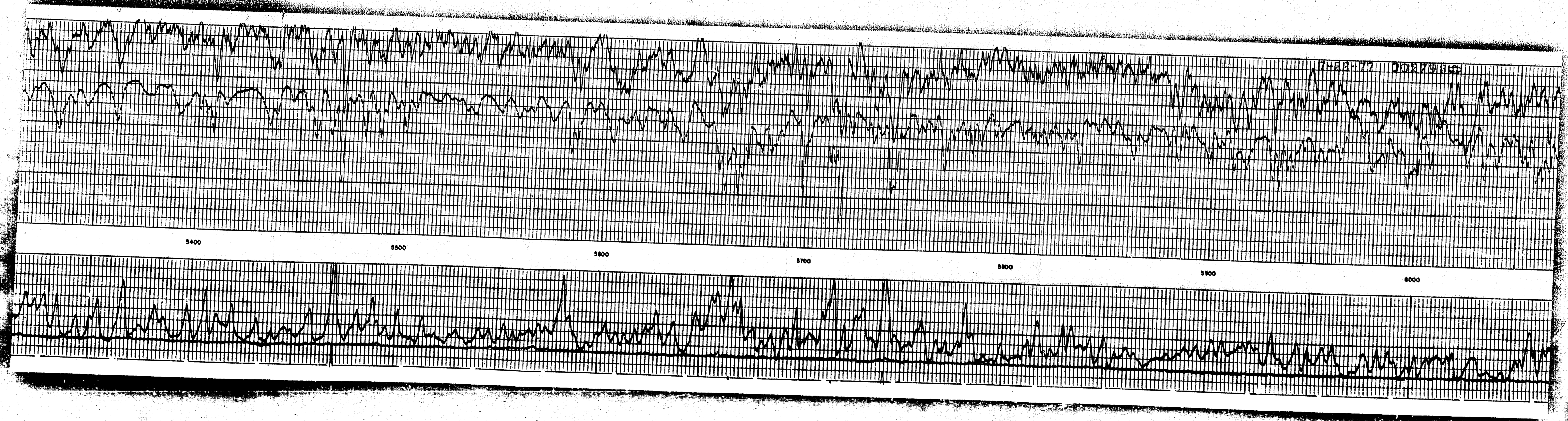
WELL DENSITY GRAM/CC	2.5
GAMMA RAY GRAM/CC	1.5
COMPARATED FORMATION POROSITY	2.0
CORRECTION GRAM/CC	0



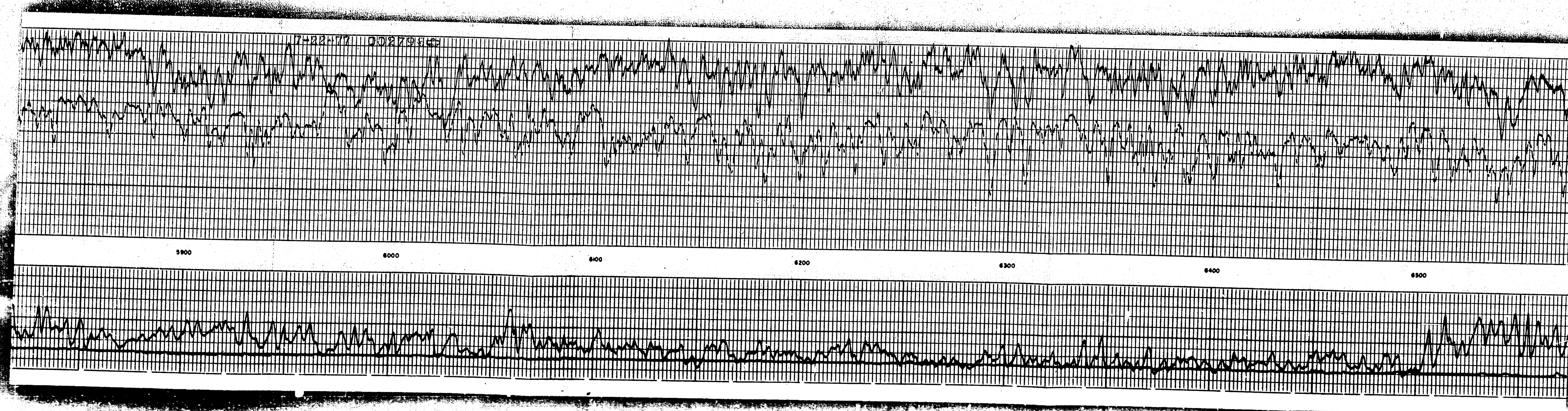




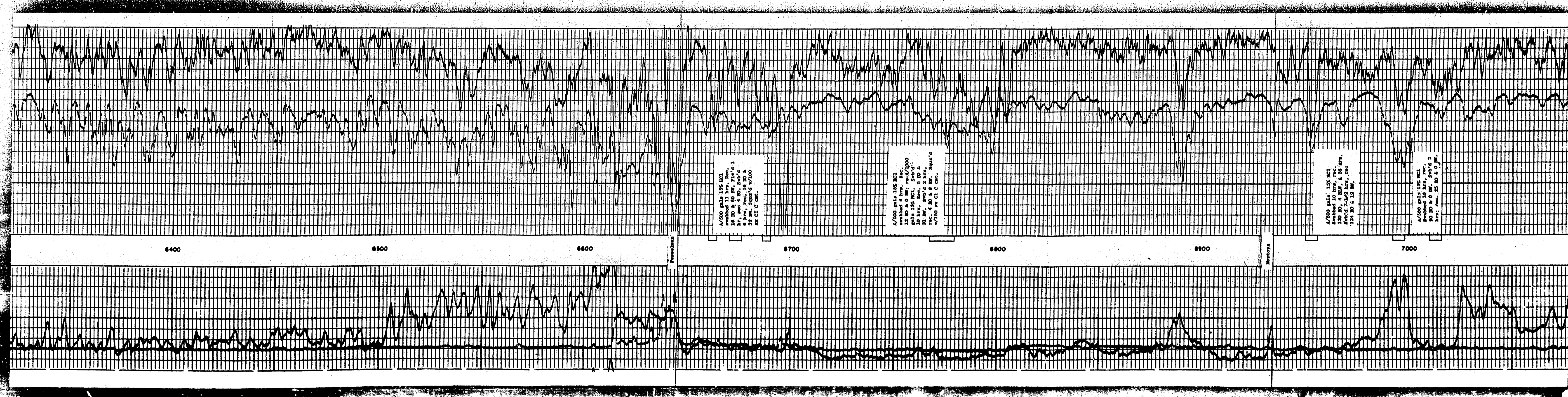












4000 041 155 041  
1000 041 155 041  
1000 041 155 041  
1000 041 155 041  
1000 041 155 041  
1000 041 155 041

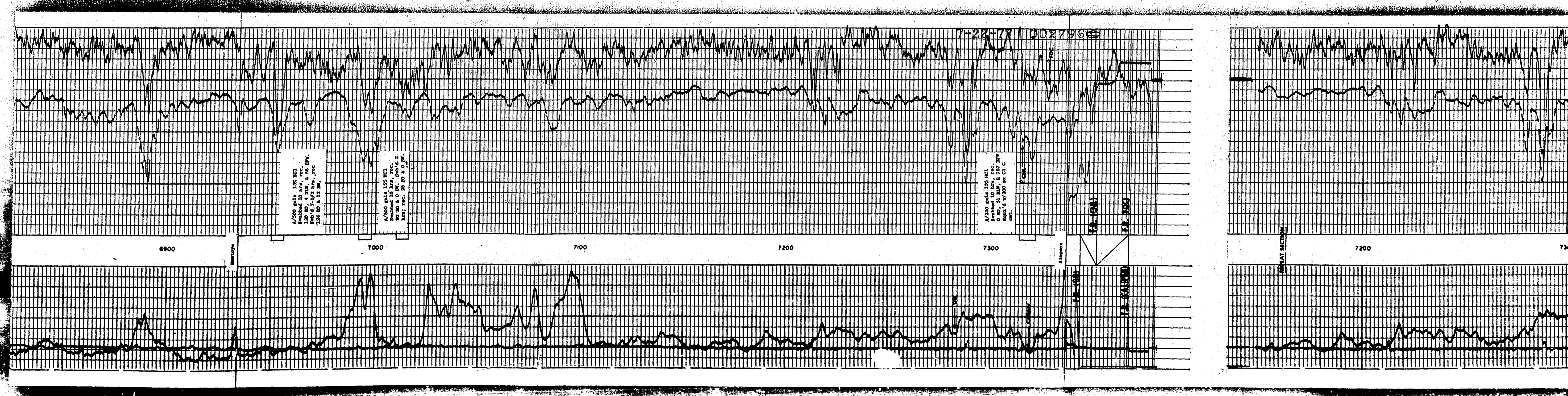
4000 041 155 041  
1000 041 155 041  
1000 041 155 041  
1000 041 155 041  
1000 041 155 041  
1000 041 155 041

4000 041 155 041  
1000 041 155 041  
1000 041 155 041  
1000 041 155 041  
1000 041 155 041  
1000 041 155 041

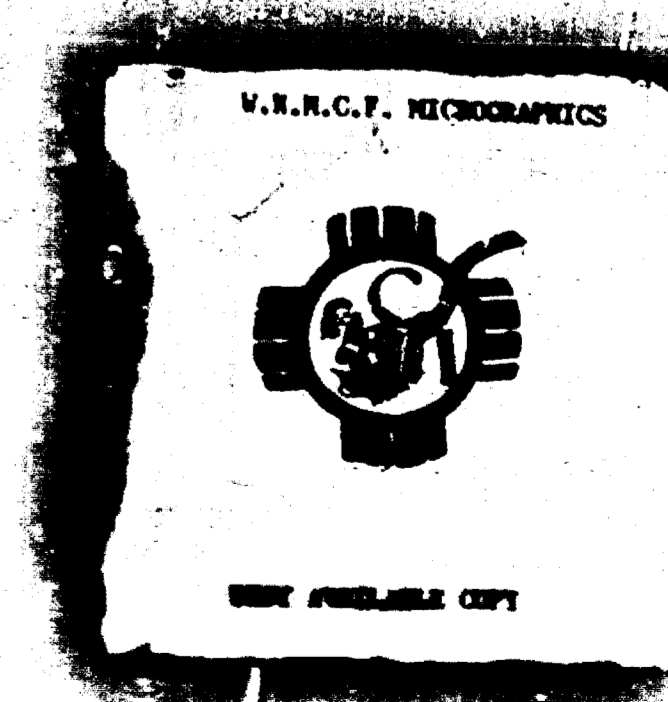
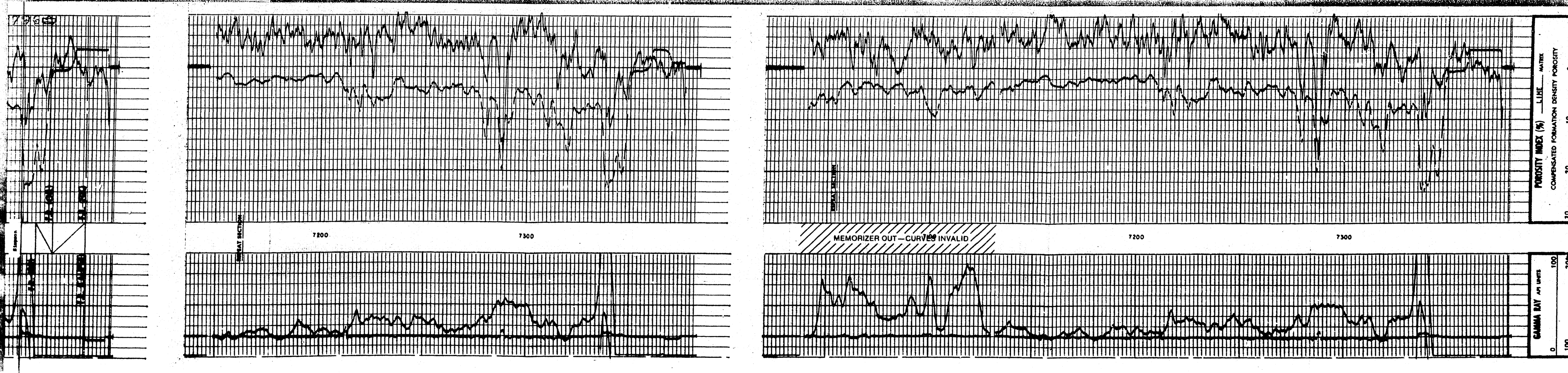
4000 041 155 041  
1000 041 155 041  
1000 041 155 041  
1000 041 155 041  
1000 041 155 041  
1000 041 155 041



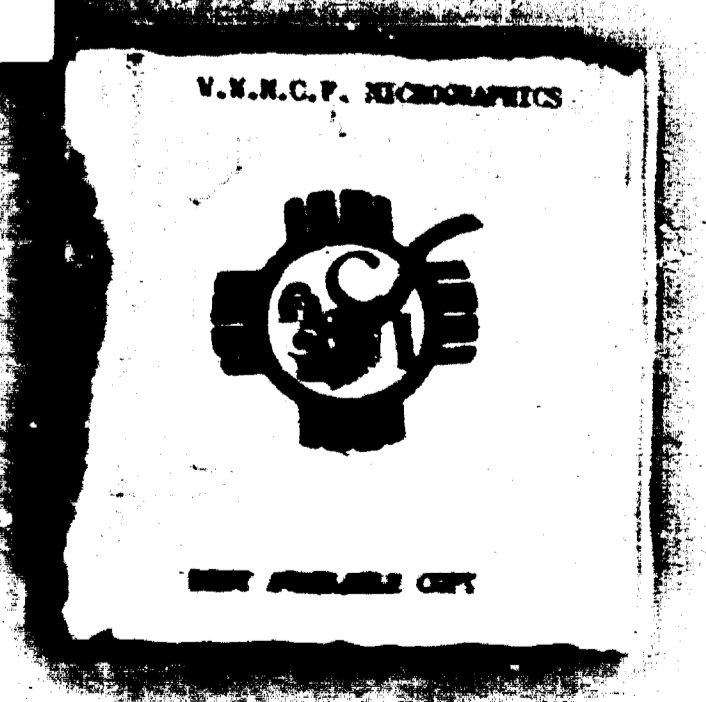
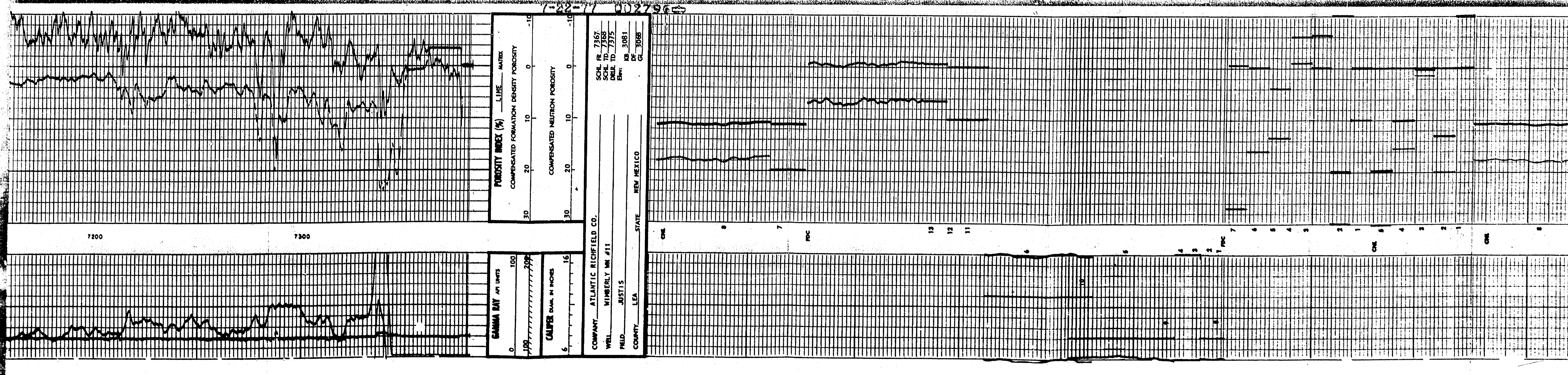




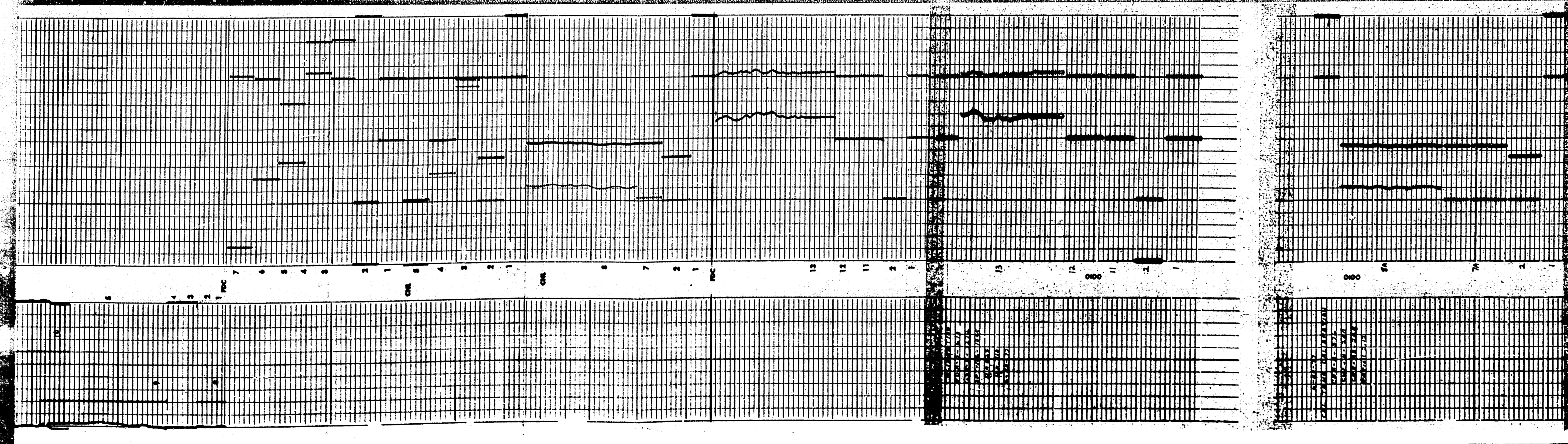












**COMPUTED NETION CALIBRATION CORING**

1. MECHANICAL ZERO  
 2. RECORD SENSITIVITY (FROM MICROSCOPE # USED)  
 3. P. F. NO.  
 4. 1. 1.54 19.7 41.1 11.0 5.0  
 2. 1.54 19.7 41.1 11.0 5.0  
 3. 1.54 19.7 41.1 11.0 5.0  
 4. 1.54 19.7 41.1 11.0 5.0  
 5. 1.54 19.7 41.1 11.0 5.0  
 6. 1.54 19.7 41.1 11.0 5.0

7. PROPORTIONAL CONSTANT WITH CORRECTION FACTOR  
 8. LOG POSITION WITH CORRECTION FACTOR  
 9. LOG POSITION WITH CORRECTION FACTOR  
 10. LOG POSITION WITH CORRECTION FACTOR

RATIO NORMALIZED TO 100% (RATIO LOG)

11. 272 10.4 13.5 11.5

**FORMATION DENSITY COMPENSATED CALIBRATION CORING**

1. MECHANICAL ZERO  
 2. RECORD SENSITIVITY  
 3. P. F. NO.  
 4. 1.54 19.7 41.1 11.0 5.0  
 5. 1.54 19.7 41.1 11.0 5.0  
 6. 1.54 19.7 41.1 11.0 5.0

7. PROPORTIONAL CONSTANT WITH CORRECTION FACTOR  
 8. LOG POSITION WITH CORRECTION FACTOR  
 9. LOG POSITION WITH CORRECTION FACTOR  
 10. LOG POSITION WITH CORRECTION FACTOR

RATIO NORMALIZED TO 100% (RATIO LOG)

11. 272 10.4 13.5 11.5

**GAMMA RAY CALIBRATION CORING**

1. MECHANICAL ZERO  
 2. RECORD SENSITIVITY  
 3. P. F. NO.  
 4. 1.54 19.7 41.1 11.0 5.0  
 5. 1.54 19.7 41.1 11.0 5.0  
 6. 1.54 19.7 41.1 11.0 5.0

7. PROPORTIONAL CONSTANT WITH CORRECTION FACTOR  
 8. LOG POSITION WITH CORRECTION FACTOR  
 9. LOG POSITION WITH CORRECTION FACTOR  
 10. LOG POSITION WITH CORRECTION FACTOR

RATIO NORMALIZED TO 100% (RATIO LOG)

11. 272 10.4 13.5 11.5

