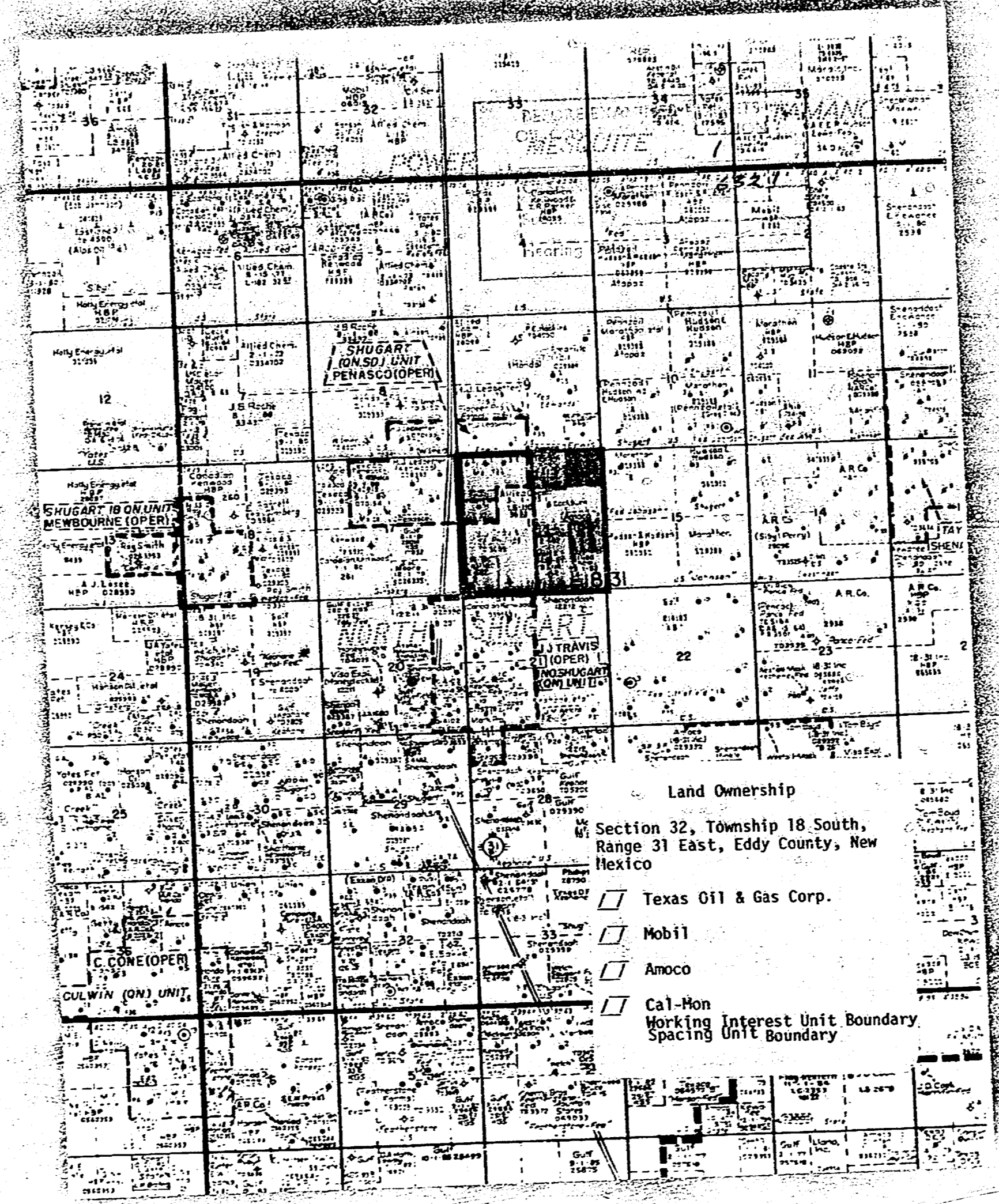
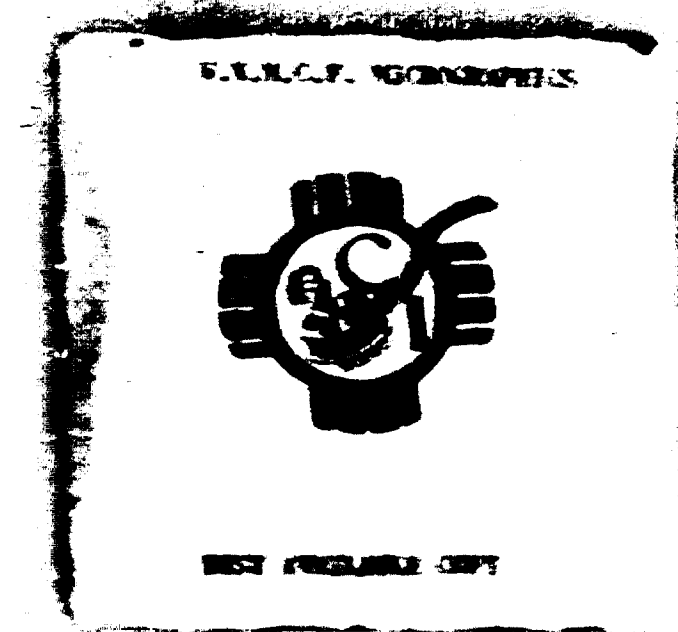
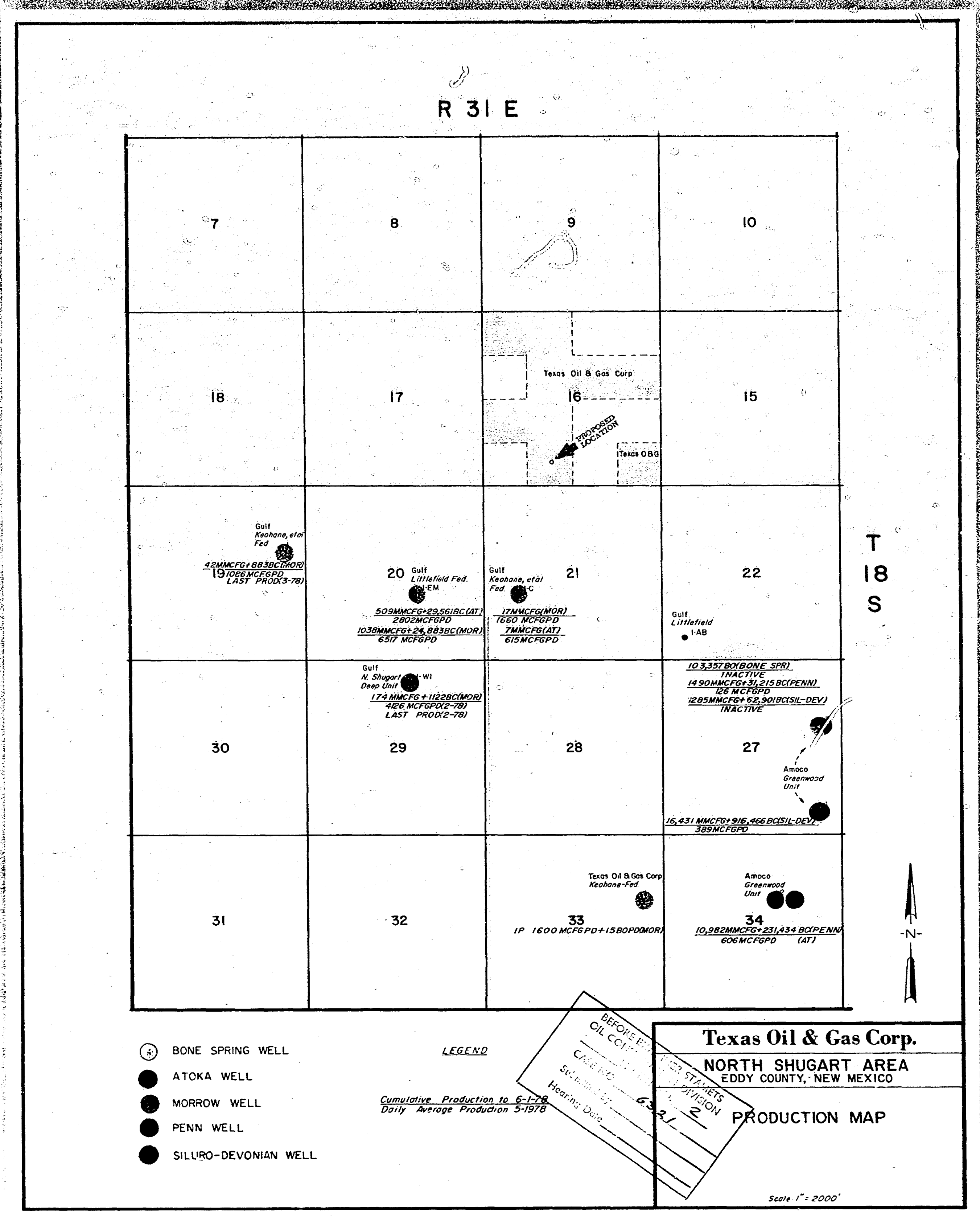


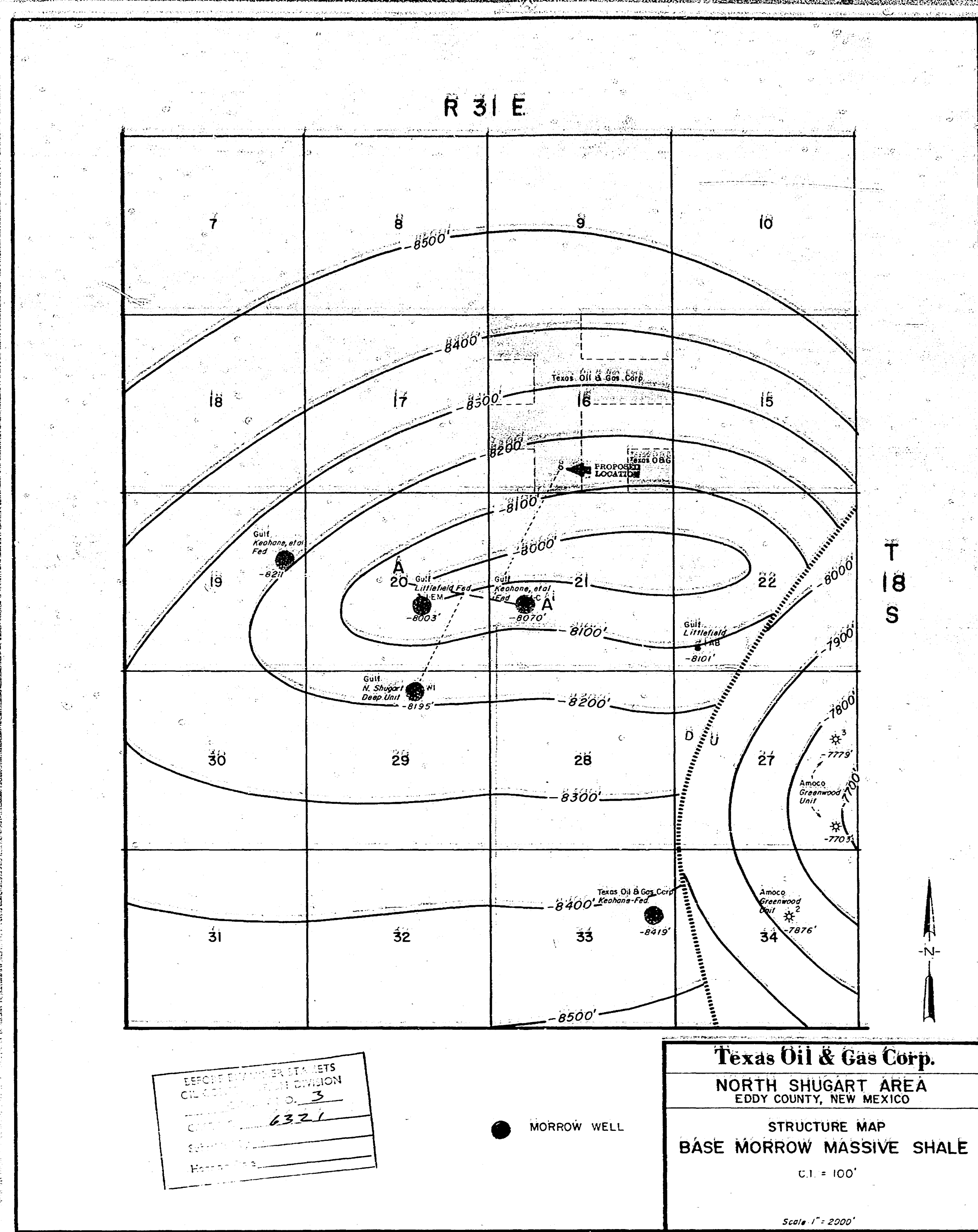
Case No.
6321

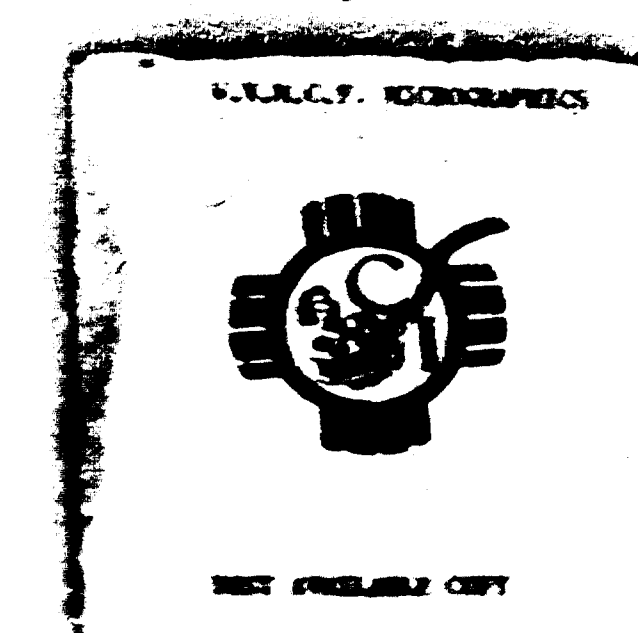
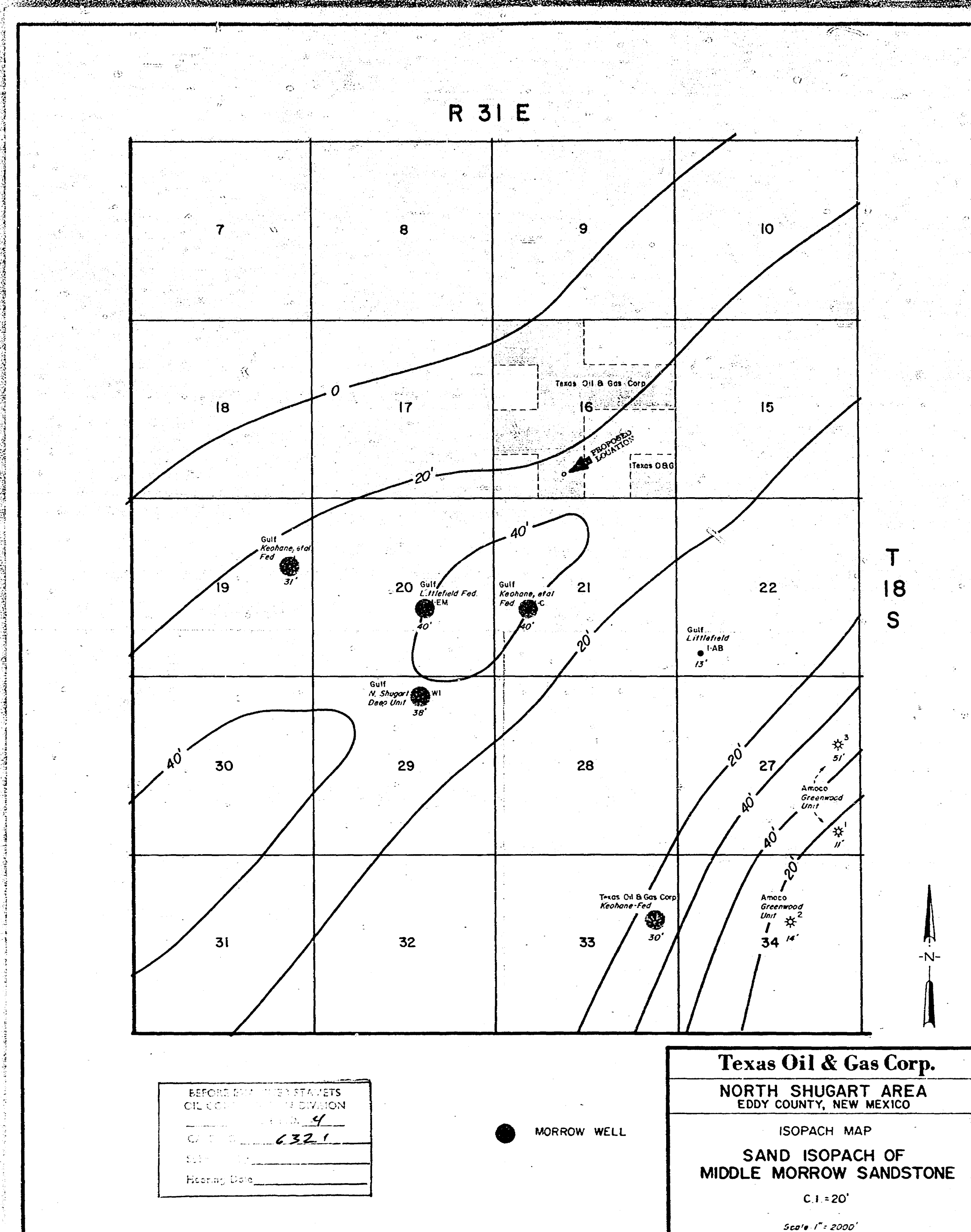
Large Exhibits







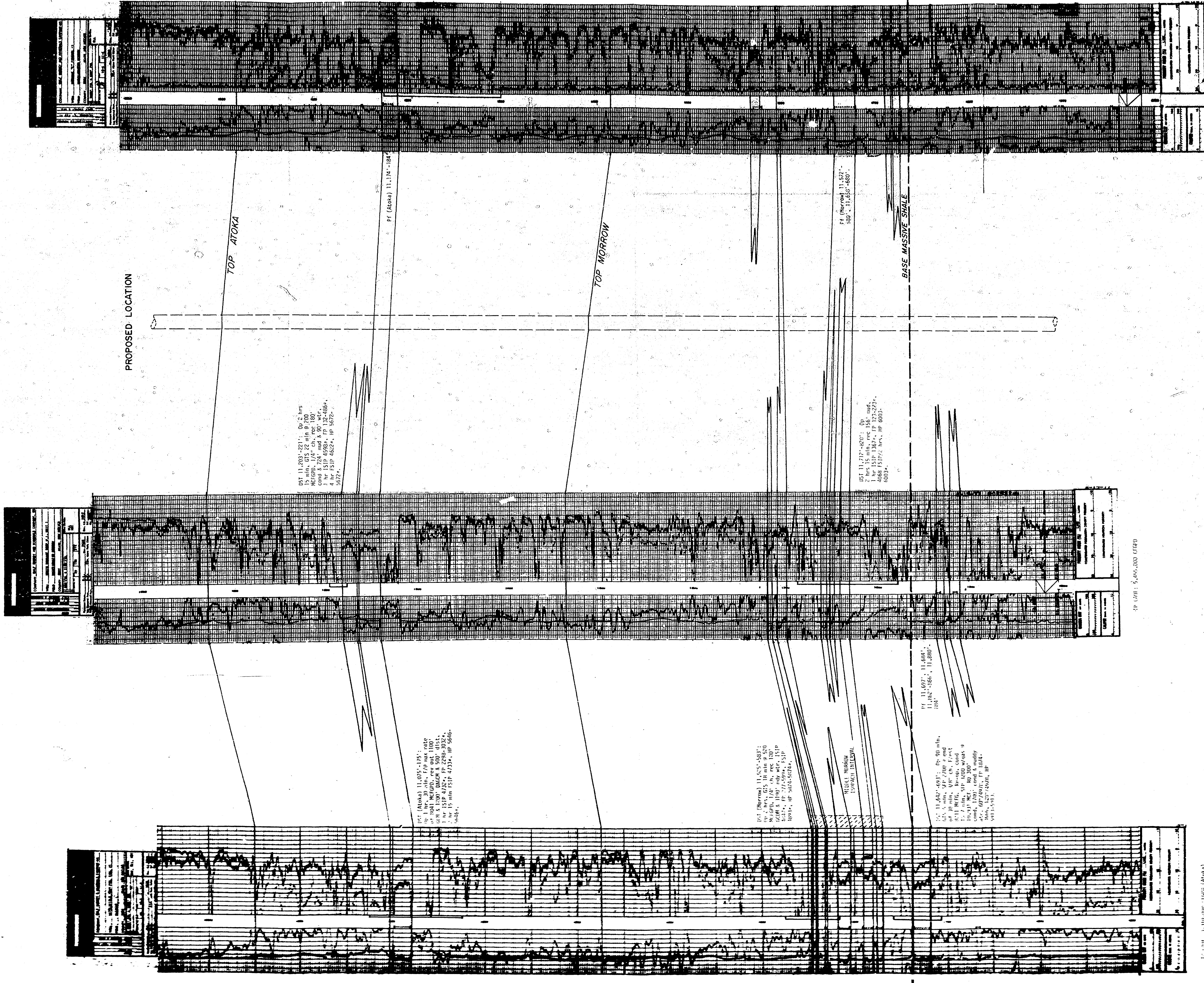




A



A'



BEFORE ANY WORK IS STARTED
 OIL COMPANY'S REPRESENTATIVE
 SHALL SIGN AND RETURN THIS
 CHECK TO THE SURVEYOR

DATE: 11/27/57

BY: [Signature]

Asoka 11,275 - 307'
 McPherson 42' 80' 5.2 EN
 21/24
 11,275 - 307'
 McPherson 42' 80' 5.2 EN

Texas Oil & Gas Corp.
NORTH SUGAR CREEK AREA
 EDDY COUNTY, NEW MEXICO

CROSS SECTION A-A'

SCALE
 Vertical: 1" = 500'
 Horizontal: 1" = 1000'

