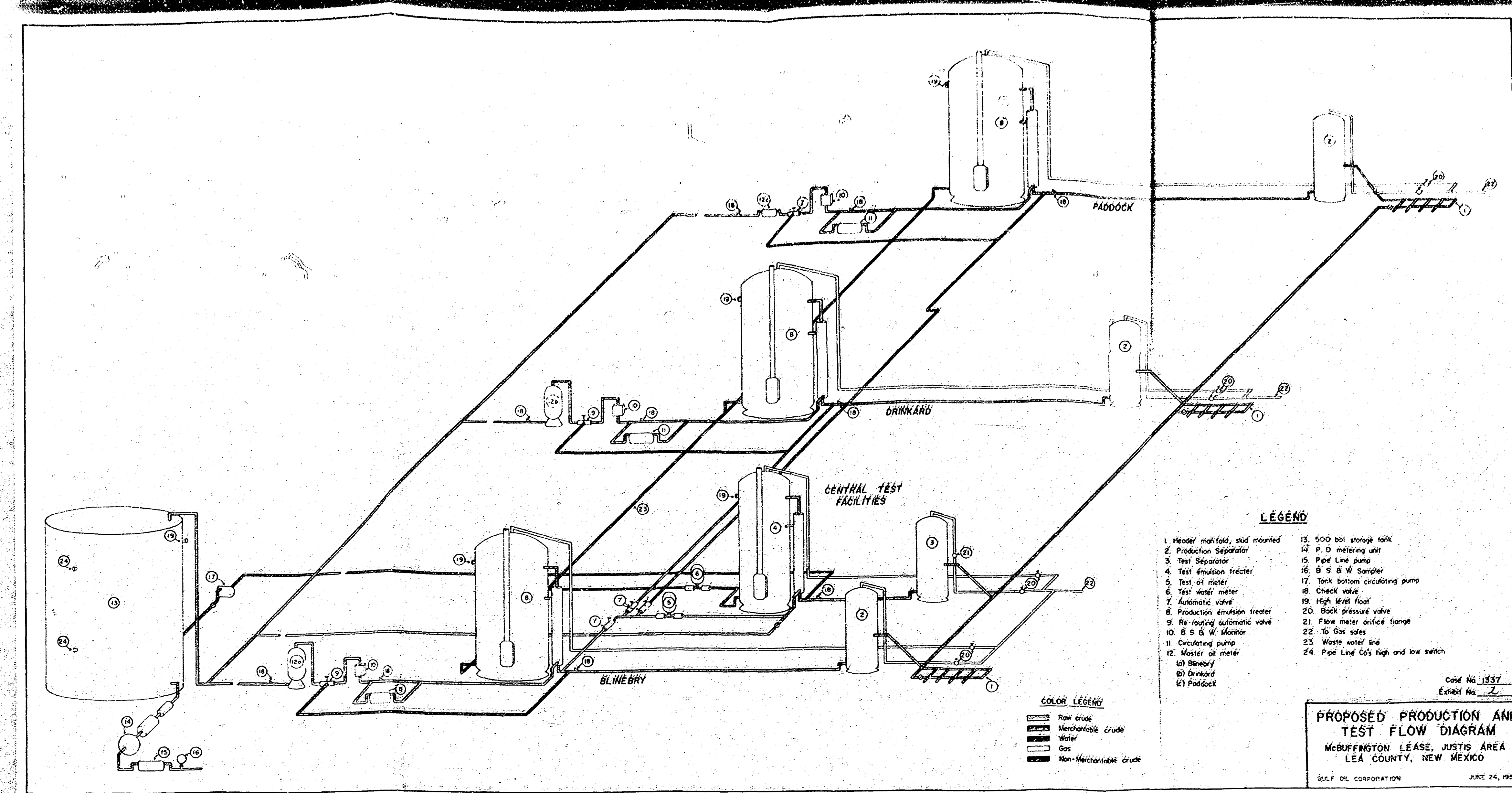


Case No.

1337

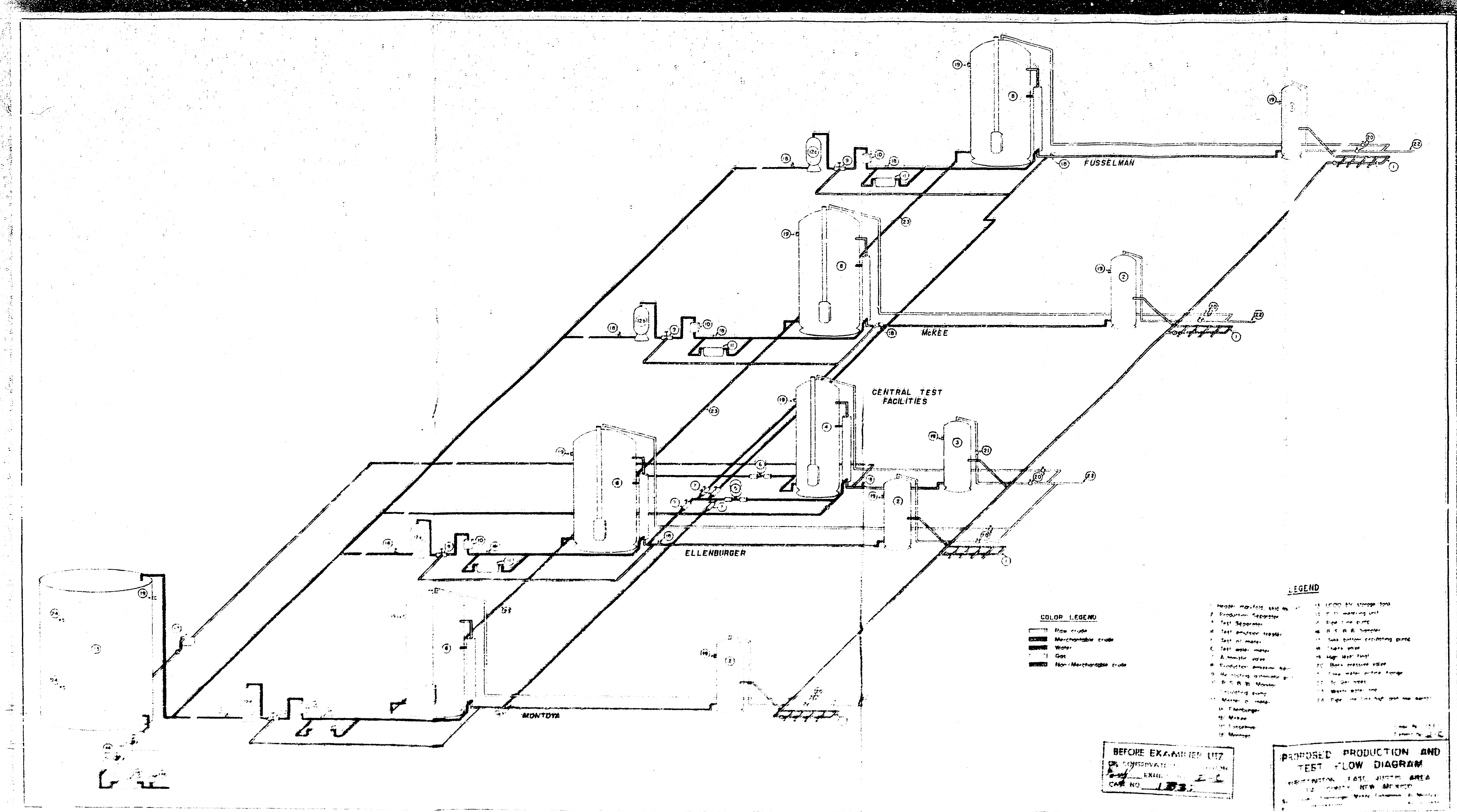
Large Exhibit



- LEGEND**
- 1. Header manifold, steel mounted
  - 2. Production Separator
  - 3. Test Separator
  - 4. Test emission heater
  - 5. Test oil meter
  - 6. Test water meter
  - 7. Automatic valve
  - 8. Production emission heater
  - 9. Re-circulating automatic valve
  - 10. S. S. & W. Monitor
  - 11. Circulating pump
  - 12. Master oil meter
  - 13. Blowby
  - 14. Driveway
  - 15. 500 bbl storage tank
  - 16. P. O. metering unit
  - 17. Fuel Line pump
  - 18. 12" S. & W. Sampler
  - 19. Tank bottom circulating pump
  - 20. Check valve
  - 21. High Well floor
  - 22. Back pressure valve
  - 23. Flow meter orifice large
  - 24. 10' gas sales
  - 25. Waste water line
  - 26. Pipe Line 60' high and low switch

- COLOR LEGEND**
- Flow crude
  - Non-ferrous crude
  - Water
  - Gas
  - Non-ferrous crude

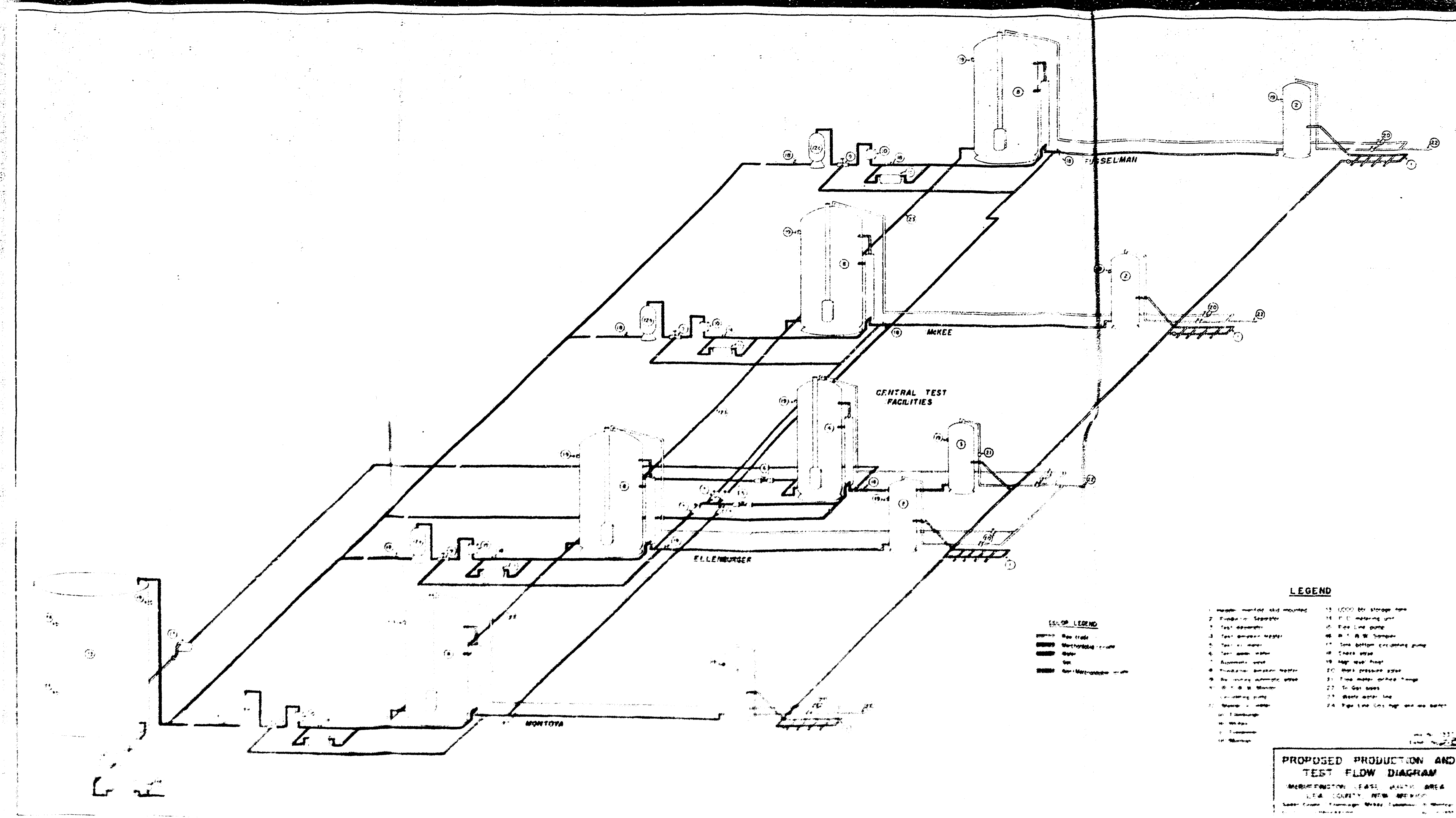
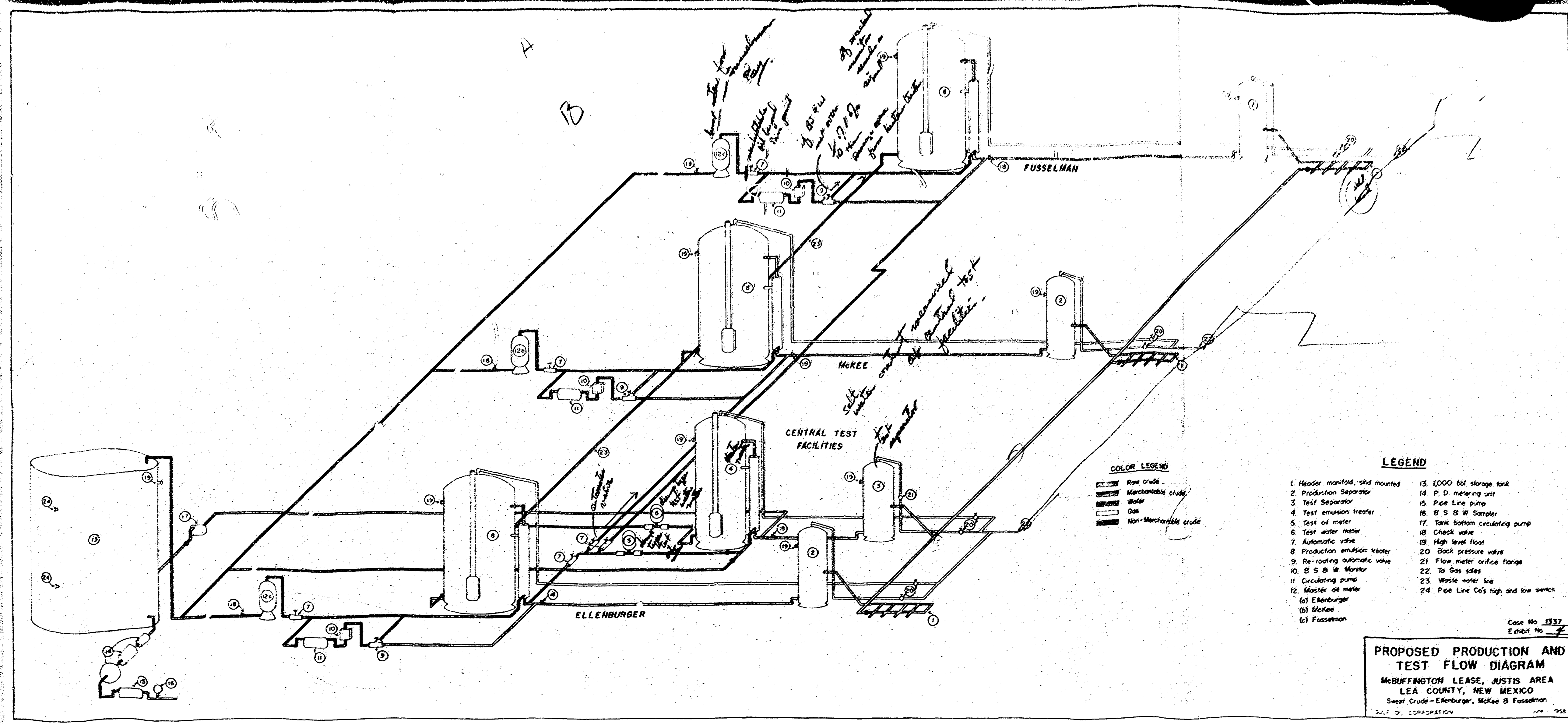
Case No. 1337  
Exhibit No. 2  
**PROPOSED PRODUCTION AND TEST FLOW DIAGRAM**  
MCCREFFINGTON LEASE, JUSTIS AREA  
LEA COUNTY, NEW MEXICO  
GULF OIL CORPORATION      APR 14, 1959

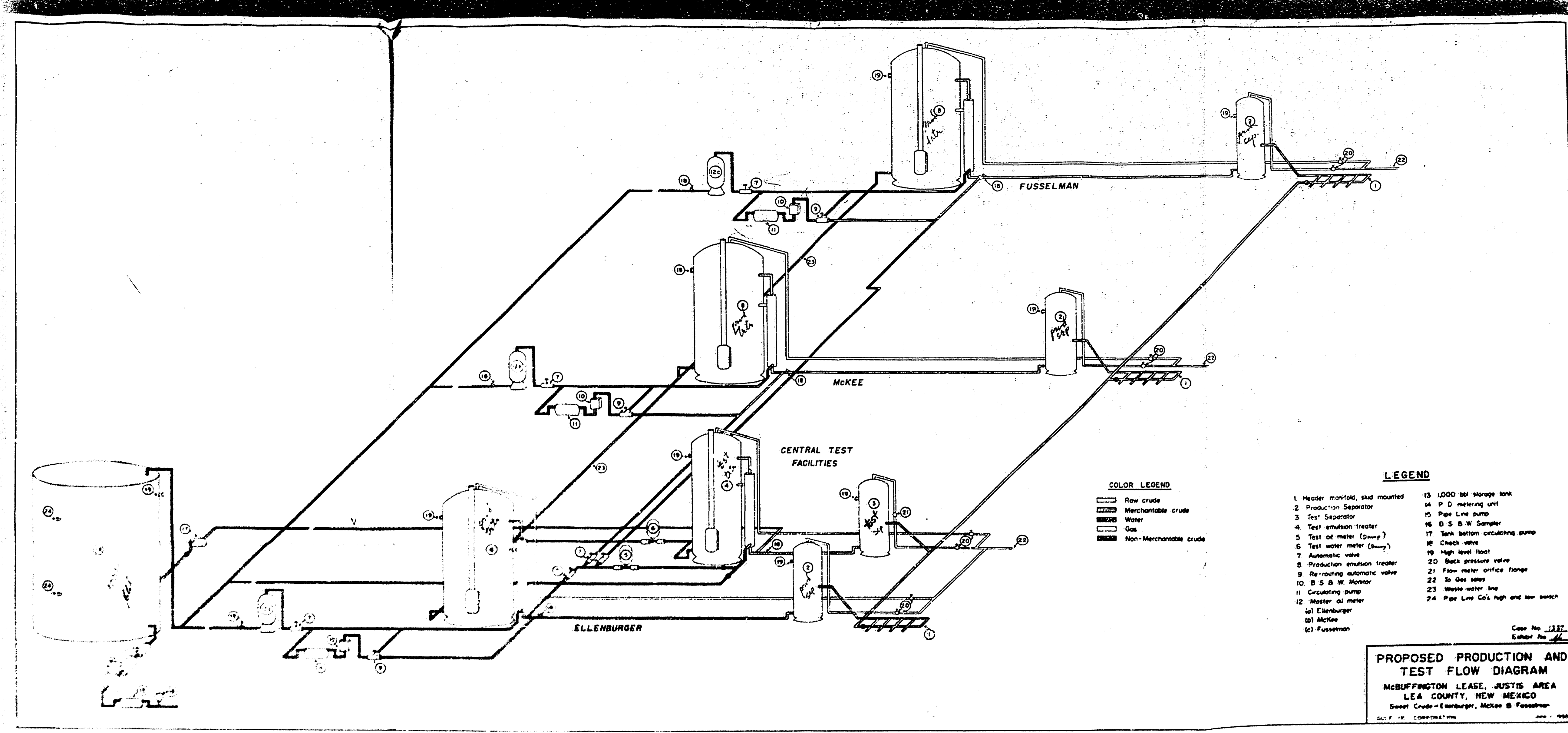
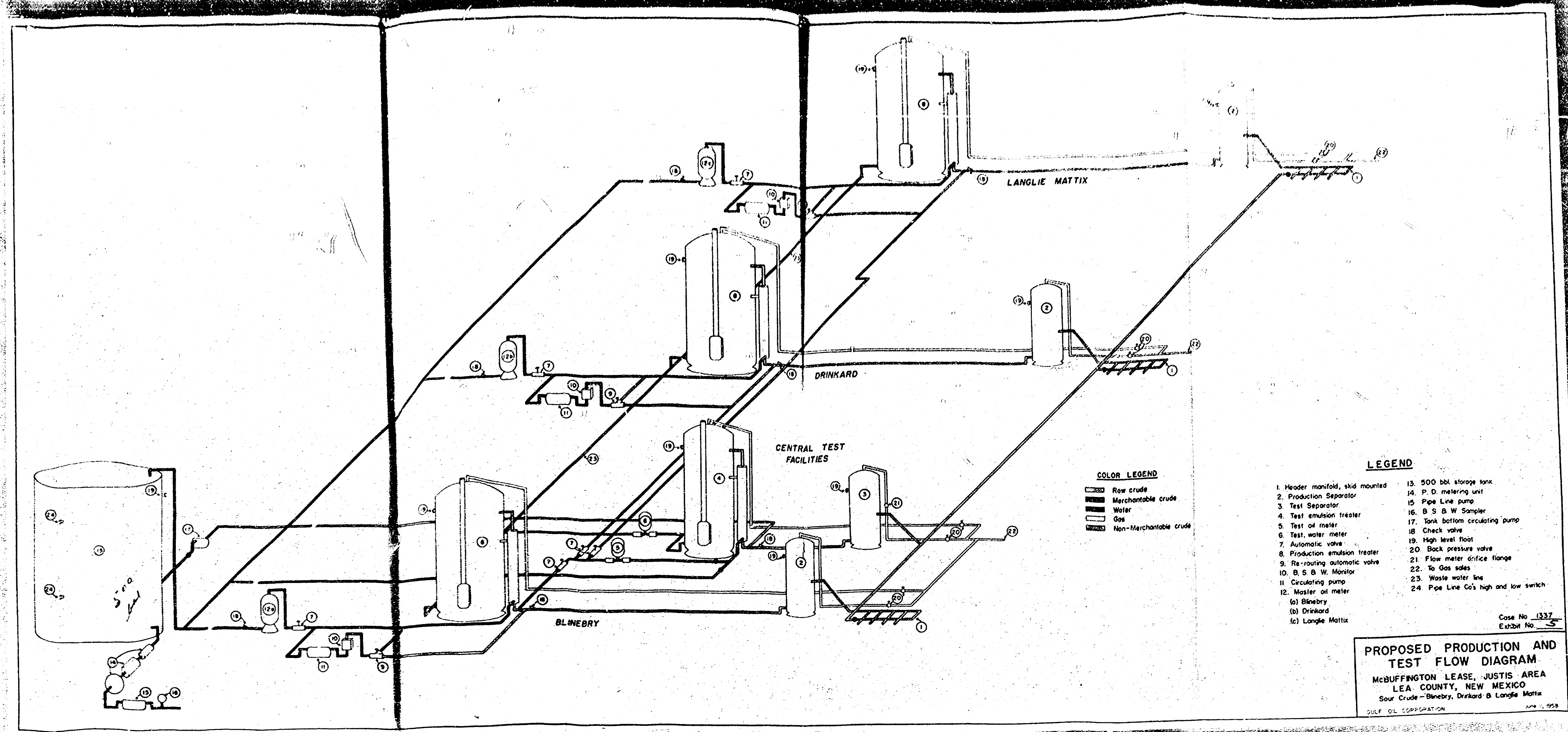


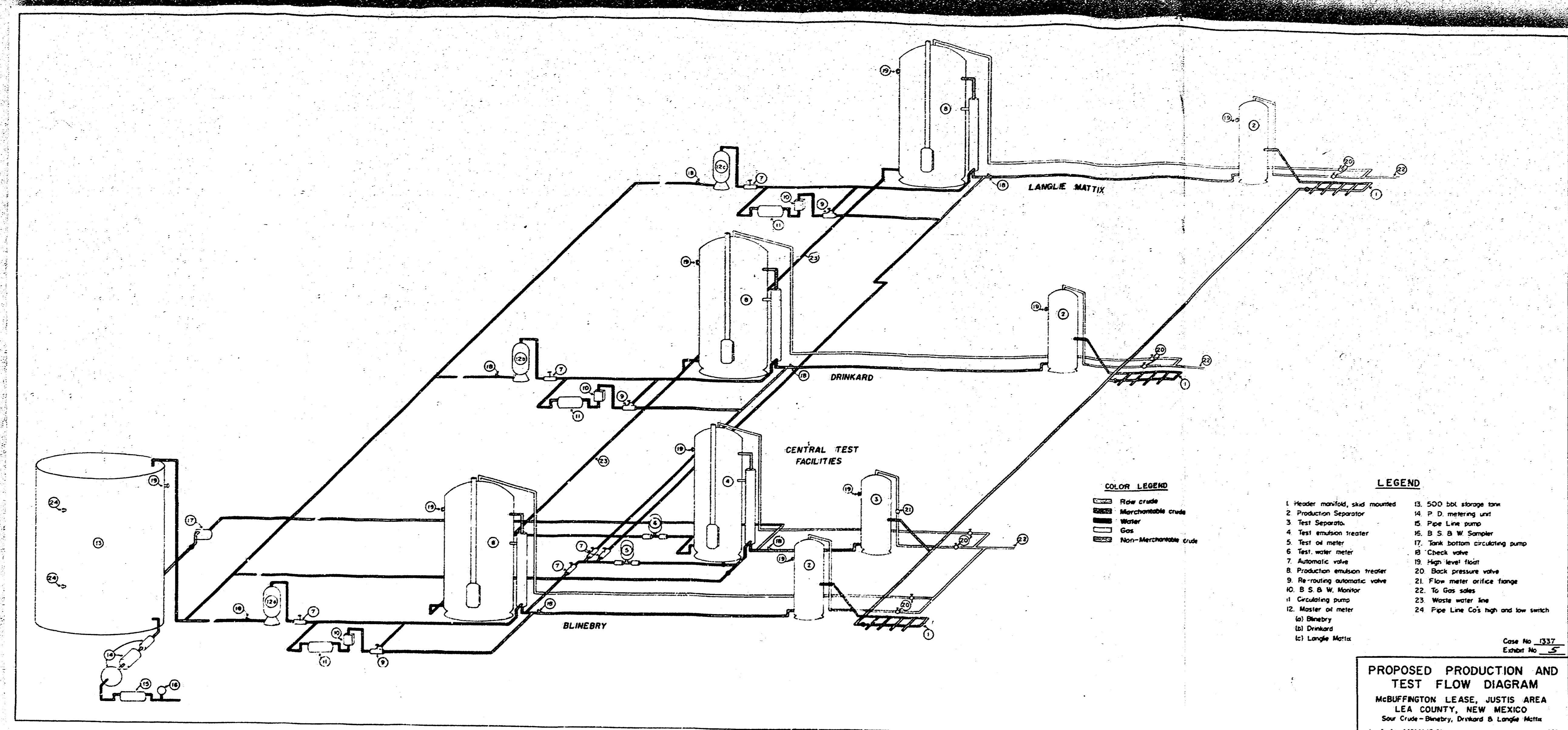
- LEGEND**
- 1. Header manifold, steel mounted
  - 2. Production Separator
  - 3. Test Separator
  - 4. Test emission heater
  - 5. Test oil meter
  - 6. Test water meter
  - 7. Automatic valve
  - 8. Production emission heater
  - 9. Re-circulating automatic valve
  - 10. S. S. & W. Monitor
  - 11. Circulating pump
  - 12. Master oil meter
  - 13. Blowby
  - 14. Driveway
  - 15. 500 bbl storage tank
  - 16. P. O. metering unit
  - 17. Fuel Line pump
  - 18. 12" S. & W. Sampler
  - 19. Tank bottom circulating pump
  - 20. Check valve
  - 21. High Well floor
  - 22. Back pressure valve
  - 23. Flow meter orifice large
  - 24. 10' gas sales
  - 25. Waste water line
  - 26. Pipe Line 60' high and low switch

- COLOR LEGEND**
- Flow crude
  - Non-ferrous crude
  - Water
  - Gas
  - Non-ferrous crude

BEFORE EXAMINATION  
GULF OIL CORPORATION  
Case No. 1337  
**PROPOSED PRODUCTION AND TEST FLOW DIAGRAM**  
MCCREFFINGTON LEASE, JUSTIS AREA  
LEA COUNTY, NEW MEXICO  
GULF OIL CORPORATION      APR 14, 1959







**LEGEND**

- |                                  |  |
|----------------------------------|--|
| 1. Header manifold, skid mounted | 13. 500 bbl storage tank               |
| 2. Production Separator          | 14. 7" D. metering unit                |
| 3. Test Separator                | 15. Pipe Line pump                     |
| 4. Test emulsion treater         | 16. 8" S. D. W. Separator              |
| 5. Test oil meter                | 17. Tank bottom circulating pump       |
| 6. Test water meter              | 18. Check valve                        |
| 7. Automatic valve               | 19. High level float                   |
| 8. Production emulsion treater   | 20. Back pressure valve                |
| 9. Re-treating automatic valve   | 21. Flow meter orifice flange          |
| 10. 8" S. D. W. Separator        | 22. 1/2" Gas valve                     |
| 11. Circulating pump             | 23. Waste water line                   |
| 12. Master oil meter             | 24. Pipe Line CO's high and low switch |
| (a) Blineby                      |  |
| (b) Drinkard                     |  |
| (c) Langle Matix                 |  |

Case No. 337  
 Sheet No. 5  
**PROPOSED PRODUCTION AND TEST FLOW DIAGRAM**  
 McBUFFINGTON LEASE, JUSTIS AREA  
 LEA COUNTY, NEW MEXICO  
 Sew. Crude - Blineby, Drinkard & Langle Matix  
 S. L. CORPORATION APR 1, 1958