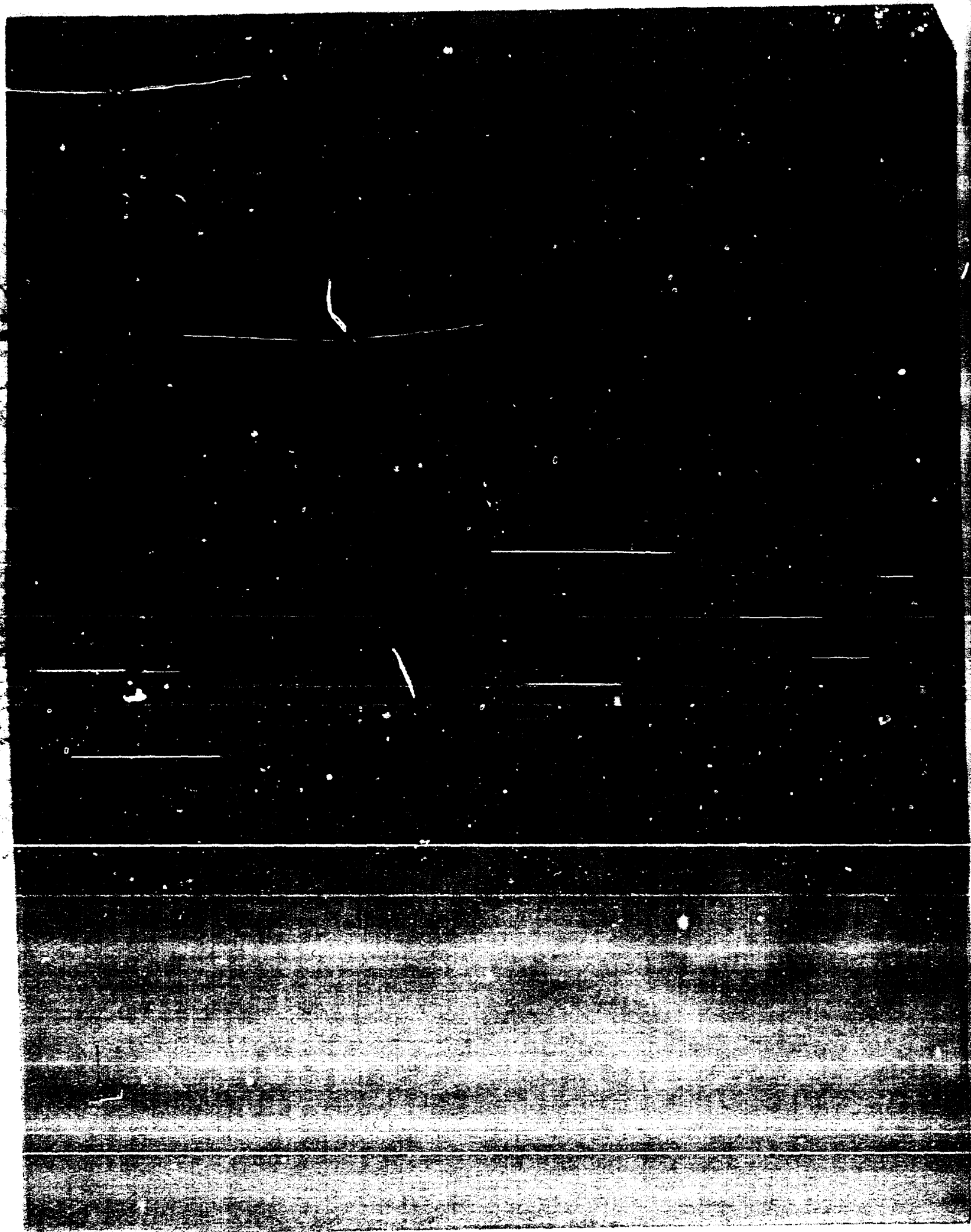


CASE 1827: Application of GULF OIL
for an oil-oil dual of its Learcy
McBuffington Well No. 5.

Case No.

1827

Application, Transcript,
Small Exhibits, Etc.



DEARNLEY-MEIER REPORTING SERVICE, Inc.

PHONE CN 3-6691

ALBUQUERQUE, NEW MEXICO

BEFORE THE
OIL CONSERVATION COMMISSION
Santa Fe, New Mexico
December 11, 1959
EXAMINER HEARING

IN THE MATTER OF:

Application of Gulf Oil Corporation for an oil-oil dual completion. Applicant, in the above-styled cause, seeks an order authorizing the dual completion of its Learcy McBuffington Well No. 5, located 1650 feet from the South line and 1980 feet from the East line of Section 13, Township 25 South, Range 37 East, Lea County, New Mexico, in such a manner as to permit the production of oil from an undesignated Paddock pool and the production of oil from the Justis-Blinebry Pool through parallel strings of tubing.

Case 1827

BEFORE:

Mr. Daniel S. Nutter, Examiner

TRANSCRIPT OF HEARING

MR. NUTTER: We will take up next Case 1827.

MR. PAYNE: Case 1827: Application of Gulf Oil Corporation for an oil-oil dual completion.

MR. KASTLER: If the Examiner please, my name is Bill Kastler from Roswell, New Mexico, appearing on behalf of Gulf Oil Corporation. Our witness this morning is Mr. John H. Hoover.

(Witness sworn.)

JOHN H. HOOVER

called as a witness, being first duly sworn on oath, testified as follows:



DIRECT EXAMINATION

BY MR. KASTLER:

Q Will you please state your name and by whom you are employed?

A John Hoover, employed by Gulf Oil Corporation, Roswell, New Mexico.

Q What is your position at Roswell?

A Petroleum engineer.

Q Are you an old hand at testifying before the New Mexico Oil Conservation Commission?

A Yes, sir, I have previously testified.

Q Are you familiar with Gulf's application in Case 1827?

A Yes, I am.

MR. KASTLER: I submit Mr. Hoover's qualifications are acceptable.

MR. NUTTER: Mr. Hoover is qualified as an old hand.

Q (By Mr. Kastler) Will you please explain briefly what Gulf seeks in its application in Case 1827?

A Yes, sir. Gulf is asking for permission to oil-oil dually complete our Learcy McBuffington Well No. 5 in an undesignated pool and in the Justis-Blinbry Pool. The New Mexico Oil Conservation Commission, by Order R-1434 in Case 1701 dated July 2nd, 1959, authorized Gulf to oil-oil dual complete this same well, McBuffington No. 5, in an undesignated Paddock pool and in the Justis-Ellenberger Pool. We now propose to abandon the

DEARNLEY-MEIER REPORTING SERVICE, Inc.

PHONE CN 3-6691

ALBUQUERQUE, NEW MEXICO



Ellenberger and recomplete in the Justis-Blinbry. The Paddock perforations will be identical to the original case.

Q Do you propose to produce in this dual completed well, if authorized, through dual strings of tubing?

A Yes, sir.

Q What's the reason for abandoning the Ellenberger in this well?

A The Ellenberger has gone to water.

Q Have you prepared for an exhibit here a lease plat which will show Gulf Learcy McBuffington lease and the location of the well thereon?

A Yes, sir, we have marked it Exhibit No. 1. It shows the Learcy McBuffington lease as outlined in green and described as the South Half of Section 13, Township 25 South, Range 37 East, Lea County, New Mexico. Also shown on this lease plat is the Learcy McBuffington Well No. 5, it's circled and colored in red, being located 1650 feet from the South line and 1980 feet from the East line of this Section 13.

Q Does this proposed lease plat show offset operators as well?

A Yes, it does.

Q Does it show the location of various wells on this lease and offsetting this lease, and the pay zones to which they are completed?

A Yes, it does.

DEARNLEY-MEIER REPORTING SERVICE, Inc.

PHONE CM 3-6691

ALBUQUERQUE, NEW MEXICO



DEARNLEY-MEIER REPORTING SERVICE, Inc.

PHONE CH 3-6691

ALBUQUERQUE, NEW MEXICO

Q Insofar as is material to this cause?

A Yes.

Q Mr. Hoover, have you prepared an electrolog or supervised and directed the preparation of such a log for use here as Exhibit No. 2?

A Yes, it's marked Exhibit No. 2, and this log shows the top of the Glorietta formation at 4654, the base of the Justis Gas Pool at 4892, the top of the Blinebry Pool at 5120 feet, the top of the Tubb Pool at 5680 feet. Also shown are the existing Paddock at 4940 and 4946 feet, as well as a company test that was made on August 6, 1959, in the Paddock pay.

Q What were the results of that test?

A The well flowed 96 barrels of oil and 24 barrels of water through 2-3/8 tubing, with a 15/64ths inch choke, a GOR of 3210.

Q Does Exhibit No. 2 also show the areas between which selective perforations will be made in the Blinebry zone?

A Yes, it does. This zone which has not been perforated as yet shows that the proposed perforations will be in the interval 5286 feet to 5538 feet. It will be perforated selectively.

MR. NUTTER: That was 5538?

A Yes, sir. 5286 to 5538.

Q (By Mr. Kastler) Have you prepared a schematic diagram, Mr. Hoover, to illustrate the proposed type of installation to make this a dually completed well?

A Yes, sir, it has been labelled Exhibit 3. This exhibit



DEARNLEY-MEIER REPORTING SERVICE, Inc.

PHONE CH 3-6691

ALBUQUERQUE, NEW MEXICO

shows the well to be, to have 13 3/8 inch O.D. casing set at 423 feet. The cement was circulated to the surface. 9 5/8 inch O.D. casing set at 3450 feet, cement also circulated to the surface. The well was completed to a total depth of 8300 feet; 7 inch casing set at 8,260 feet, cemented with 1,000 sacks; the top of the cement at 2575 by temperature survey.

The well had a Baker Model "D" Packer set at 8,150 feet, which was set for the dual completion in the Paddock and Ellenberger, and this packer has now, has a Trip Bob set in it and two sacks of cement dumped on top. The calculated top of the cement is at 8,142.

A cast iron bridge plug has been set at approximately 5570 feet. Two sacks of cement dumped on top. The calculated top of the cement at 5562 feet, and this would be the new plugback depth of the well.

This installation shows the proposed method by which we would dually complete in the undesignated Paddock and the Blinebry. We propose to set a Baker Model "DA" Packer at 5,050 feet. We will install two strings of tubing, the short string will be 2 3/8 inch O.D., the long string, 2 7/8 inch Hydril. There will be 2 3/8 inch O.D. tail pipe below the packer set at 5,250 feet. The Paddock perforations, as shown here, are 4940 feet, 4946 feet. These are the same perforations as in the original Paddock-Ellenberger dual. The proposed Blinebry interval is shown here, 5286 feet to 5538 feet with selective perforations within that



interval. The color scheme, we show green to be the Paddock producing string, and in red the Blinebry. I believe that covers the proposed mechanical installation.

Q Mr. Hoover, isn't a dual completion such as is illustrated in Exhibit No. 3 a sort of a usual type dual completion that Gulf has previously made with the approval of the New Mexico Oil Conservation Commission?

A Yes, it is.

Q Inasmuch as it uses Model Baker "D" Packer and parallel strings of tubing?

A Yes.

Q Then why is it necessary to have this hearing?

A This is a first dual in which this undesignated Paddock and the Blinebry are open within the same well bore.

Q What tests have been made of the pressures in the respective formations?

A On our McBuffington No. 5 a test was made on June 10th of 1959 in the Paddock for bottomhole pressure. The bottomhole pressure datum of a minus 1860 feet was 2,099 pounds. The shut-in tubing pressure at that time was 1120 pounds. Since the Blinebry has not been opened in this well, we have used a test that was made on our McBuffington No. 6, which is a Blinebry producer, a south offset to this Well No. 5. This test was made on March the 10th, 1959; the bottomhole pressure was 2292 pounds at a datum of a minus 2300 feet. The shut-in tubing pressure was 1480 pounds.

DEARNLEY-MEIER REPORTING SERVICE, Inc.

PHONE CH 3-6691

ALBUQUERQUE, NEW MEXICO



Q Mr. Hoover, is the Blinebry production fairly well established in this general vicinity?

A Yes, it is.

Q Has there been any fluid analysis made?

A We have a fluid analysis on the Paddock formation, which was taken from the north offset well, being Western Petroleum Company well, it's a north offset to our No. 5, indicated it had a gravity of 39 degrees, a sulphur content of .67. On our McBuffington No. 6, the fluid analysis indicated that the gravity would be 38.8, and the sulphur .61.

MR. NUTTER: For what formation?

A For the Blinebry. We have extrapolated these pressures to the proposed setting depth of the Baker Model "D" Packer at 5,050 feet, using the pressure gradients. Our calculated pressure on top of the packer would be approximately 2136 pounds, underneath the packer approximately 2180 pounds, giving us a differential of somewhat less than a hundred pounds across the packer.

MR. NUTTER: That packer will stand that differential?

A Yes, sir, I believe we will never have any trouble with that.

Q (By Mr. Kastler) Can adequate tests be made to determine if there is communication between the two zones at the time that the Baker Model "D" Packer is installed?

A Yes, sir. When the packer is installed, there are two tests run. The long string is latched into the packer, into the

DEARNLEY-MEIER REPORTING SERVICE, Inc.

PHONE CH 3-6691

ALBUQUERQUE, NEW MEXICO



DEARNLEY-MEIER REPORTING SERVICE, Inc.

PHONE CH 3-6691

ALBUQUERQUE, NEW MEXICO

tailpipe assembly, and it is pressured below the packer, down through the tubing below the packer to determine if there is any drop in pressure. Then it is pressured down the casing tubing annulus, which would be on top of the packer, to determine if there is any drop in pressure.

Q In making initial packer leakage tests of that sort, would you use for test purposes pressures far in excess of what you would expect to encounter here?

A Yes, sir. In making the packer test?

Q Yes, sir.

A Yes, sir.

Q Have you made any study to determine the approximate cost of drilling and completing a well to the Blinebry zone?

A Yes, sir. A well to the Blinebry would cost in the neighborhood of \$50,000.00, and the dual completion of this well, since we have our tubing or part of our dual completion equipment already installed, which was used on the other dual, we probably can dual in the neighborhood of \$10,000.00. Therefore, we would realize a saving in the neighborhood of \$40,000.00.

Q In your opinion would the granting of this application operate in such a manner as to prevent waste?

A Yes, it would, it would prevent waste.

Q Have all offset operators been notified of this application?

A Yes, they have.



DEARNLEY-MEIER REPORTING SERVICE, Inc.

PHONE CH 3-6691

ALBUQUERQUE, NEW MEXICO

Q Would correlative rights be adversely affected, if granted?

A No, they would not be adversely affected.

Q Is the royalty ownership common in both zones of the proposed completion?

A Yes.

Q If the application were granted, would Gulf comply with all conditions of approval and perform all required tests?

A Yes, sir.

Q Were Exhibits 1, 2, and 3 prepared by you or under your direction and supervision?

A Yes, sir, they were.

MR. KASTLER: That concludes the questions on direct testimony. I would like at this time to move that Exhibits 1, 2, and 3 be admitted in evidence in this case.

MR. NUTTER: Gulf's Exhibits 1, 2, and 3 will be entered. Does anyone have any questions of Mr. Hoover?

MR. PAYNE: Yes, sir.

MR. NUTTER: Mr. Payne.

CROSS EXAMINATION

BY MR. PAYNE:

Q Mr. Hoover, your Exhibit No. 3 shows that you propose to install a Baker Model "DA" Packer. Is that the usual Baker Model "D" Production Packer?

A Yes, sir.



DEARNLEY-MEIER REPORTING SERVICE, Inc.

PHONE CH 3-6691

ALBUQUERQUE, NEW MEXICO

Q Do either of these zones make water?

A The Paddock.

Q The Paddock only?

A Of course, we haven't opened the Blinebry in this one, but the Paddock on the initial test did make a little water.

BY MR. NUTTER:

Q Do you have gas-oil ratios on these two zones, Mr. Hoover?

A On our McBuffington No. 6 in the Blinebry, the gas-oil ratio was 916. On this Paddock, I believe on our log the test shows that the gas-oil ratio was 3210.

Q What was the actual status of the Ellenberger prior to the time you plugged it off?

A You would like the last test?

Q Yes, sir. What it was producing prior to the time it was shut in.

A Yes, sir. I don't have the exact test here, but it was in the neighborhood of 11 barrels of oil and 440 to 50 barrels of water.

Q Is this No. 5 well in the north end of the pool as far as the Ellenberger is concerned?

A I believe it is, yes, sir.

Q I note on your Exhibit 1 that for the No. 5 you have the symbol "H.E." What does that stand for?

A That's our designation for Holt or Paddock.



Q I see.

A That's the Paddock-Ellenberger. That's dualled now, or was in the Paddock-Ellenberger.

Q In other words, you are calling the Paddock the Holt?

A Yes, it is Paddock.

MR. NUTTER: Any further questions of Mr. Hoover? He may be excused.

(Witness excused.)

MR. NUTTER: Do you have anything further, Mr. Kastler?

MR. KASTLER: No, I haven't.

MR. NUTTER: Does anyone have anything further for Case 1827? We will take that case under advisement.

DEARNLEY-MEIER REPORTING SERVICE, Inc.

PHONE CH 3-6691

ALBUQUERQUE, NEW MEXICO



STATE OF NEW MEXICO)
) ss
COUNTY OF BERNALILLO)

I, ADA DEARNLEY, Notary Public in and for the County of Bernalillo, State of New Mexico, do hereby certify that the foregoing and attached Transcript of Hearing was reported by me in stenotype, and that the same was reduced to typewritten transcript under my personal supervision, and contains a true and correct record of said proceedings, to the best of my knowledge, skill and ability.

DATED this 24th day of December, 1959, in the City of Albuquerque, County of Bernalillo, State of New Mexico.

Ada Dearnley
NOTARY PUBLIC

My Commission Expires:

June 19, 1963.

I do hereby certify that the foregoing is a correct record of the proceedings in the Trustee Hearing of Case No. 1827, heard by me on 12-11, 1959.

James, Examiner
New Mexico Oil Conservation Commission

DEARNLEY-MEIER REPORTING SERVICE, Inc.

PHONE CH 3-6691

ALBUQUERQUE, NEW MEXICO



DOCKET: EXAMINER HEARING DECEMBER 11, 1959

OIL CONSERVATION COMMISSION - 9 a.m., Mabry Hall, State Capitol, Santa Fe, New Mexico.

The following cases will be heard before Daniel S. Nutter, Examiner, or A. L. Porter, Jr., Secretary:

CASE 1804:

(Continued)

Application of Cabot Carbon Company for an oil-oil dual completion and for permission to commingle the production from two separate pools. Applicant, in the above-styled cause, seeks an order authorizing the dual completion of its Howard Fleet Well No. 1, located 1980 feet from the South line and 660 feet from the East line of Section 35, Township 13 South, Range 37 East, Lea County, New Mexico, in such a manner as to permit the production of oil from an undesignated Pennsylvanian oil pool and the production of oil from the King-Devonian Pool through parallel strings of 1½-inch tubing. Applicant further seeks permission to commingle the Devonian and Pennsylvanian production from said Howard Fleet Well No. 1.

NEW CASES

CASE 1824:

Application of The Atlantic Refining Company for an exception to Rule 104 (c) of the Commission Rules and Regulations. Applicant, in the above-styled cause, seeks an exception to Rule 104 (c) so that it may recomplete in the Denton Wolfcamp Pool its Federal Jones Well No. 2, located 330 feet from the South and East lines of Section 34, Township 14 South, Range 37 East, Lea County, New Mexico, said well being located closer than 660 feet to a well producing from the same common source of supply.

CASE 1825:

Application of Continental Oil Company for an amendment of Order R-1440. Applicant, in the above-styled cause, seeks an order amending Order R-1440 to permit the commingling of Tubb and Blinebry production on its Lockhart A-17 lease in Section 17, Township 21 South, Range 37 East, Lea County, New Mexico, without separate measurement.

CASE 1826:

Application of Continental Oil Company for an amendment of Order R-1445. Applicant, in the above-styled cause, seeks an amendment of Order R-1445 to permit the installation of automatic custody transfer equipment to handle the Delaware production from its Wilder, Payne and Bradley leases in Sections 25, 26 and 35, Township 26 South, Range 32 East, and in Sections 30 and 31, Township 26 South, Range 33 East, Lea County, New Mexico, and for permission to produce more than 16 wells in a common tank battery.

CASE 1827:

Application of Gulf Oil Corporation for an oil-oil dual completion. Applicant, in the above-styled cause, seeks an order authorizing the dual completion of its Learcy McBuffington Well No. 5, located 1650 feet from the South line and 1980 feet from the East line of Section 13, Township 25 South, Range 37 East, Lea County, New Mexico, in such a manner as to permit the production of oil from an undesignated Paddock pool and the production of oil from the Justis-Blinebry Pool through parallel strings of tubing.

- CASE 1828: Application of Francis L. Harvey for an exception to Rule 104 of the Commission Rules and Regulations and for certain exceptions to well completion requirements. Applicant, in the above-styled cause, seeks an order establishing 2 $\frac{1}{2}$ -acre spacing for Mesaverde oil wells in Sections 10, 11, 21, 22, 23 and 33 of Township 18 North, Range 3 West, Sandoval County, New Mexico, in exception to Rule 104. Applicant further proposes certain exceptions to well completion requirements.
- CASE 1829: Application of John M. Kelly for an exception to the overproduction shut-in provisions of Order R-520, as amended by Order R-967, for one well in the Jalmat Gas Pool. Applicant, in the above-styled cause, seeks an order allowing its Shahan Well No. 3 in the SW/4 NE/4 of Section 33, Township 25 South, Range 37 East, Jalmat Gas Pool, Lea County, New Mexico, to compensate for its overproduced status without being completely shut-in in order to prevent possible waste.
- CASE 1830: Application of Texaco Inc. for an oil-oil dual completion. Applicant, in the above-styled cause, seeks an order authorizing the dual completion of its United Royalty "A" Well No. 3 located in Unit F, Section 19, Township 24 South, Range 38 East, Lea County, New Mexico, in such a manner as to permit the production of oil from the Dollarhide-Queen Pool and the production of oil from the Dollarhide-Drinkard Pool through parallel strings of tubing.
- CASE 1831: Application of Texaco Inc. for an oil-oil dual completion. Applicant, in the above-styled cause, seeks an order authorizing the dual completion of its United Royalty "A" Well No. 4, located in Unit K, Section 19, Township 24 South, Range 38 East, Lea County, New Mexico, in such a manner as to permit the production of oil from the Dollarhide-Queen Pool and the production of oil from the Dollarhide-Drinkard Pool through parallel strings of tubing.
- CASE 1832: Application of Jal Oil Company for an exception to the overproduction shut-in provisions of Order R-520, as amended by Order R-967, for one well in the Jalmat Gas Pool. Applicant, in the above-styled cause, seeks an order allowing the following-described well in the Jalmat Gas Pool to compensate for its overproduced status without being completely shut-in in order to prevent possible waste:

Watkins Well No. 2, SE/4 NE/4 of Section 25,
Township 24 South, Range 36 East, Lea County,
New Mexico.

OIL CONSERVATION COMMISSION
P. O. BOX 871
SANTA FE, NEW MEXICO

December 17, 1959

C
O
P
Y

Mr. Bill Kastler
Gulf Oil Corporation
Box 669
Roswell, New Mexico

Dear Mr. Kastler:

We enclose herewith two copies of Order No. R-1434-A
issued by the Oil Conservation Commission on December
16, 1959 in Case No. 1827.

Very truly yours,

A. L. PORTER, Jr.
Secretary-Director

ir/

BEFORE THE OIL CONSERVATION COMMISSION
OF THE STATE OF NEW MEXICO

IN THE MATTER OF THE HEARING
CALLED BY THE OIL CONSERVATION
COMMISSION OF NEW MEXICO FOR
THE PURPOSE OF CONSIDERING:

CASE No. 1827
Order No. R-1434-A

APPLICATION OF GULF OIL CORPO-
RATION FOR AN OIL-OIL DUAL
COMPLETION IN AN UNDESIGNATED
PADDOCK POOL AND IN THE JUSTIS-
BLINEBRY POOL, LEA COUNTY,
NEW MEXICO

ORDER OF THE COMMISSION

BY THE COMMISSION:

This cause came on for hearing at 9 o'clock a.m. on December 11, 1959, at Santa Fe, New Mexico, before Daniel S. Nutter, Examiner duly appointed by the Oil Conservation Commission of New Mexico, hereinafter referred to as the "Commission," in accordance with Rule 1214 of the Commission Rules and Regulations.

NOW, on this 16th day of December, 1959, the Commission, a quorum being present, having considered the application, the evidence adduced, and the recommendations of the Examiner, Daniel S. Nutter, and being fully advised in the premises,

FINDS:

(1) That due public notice having been given as required by law, the Commission has jurisdiction of this cause and the subject matter thereof.

(2) That the applicant is the operator of the Learcy McBuffington Well No. 5, located 1650 feet from the South line and 1980 feet from the East line of Section 13, Township 25 South, Range 37 East, N44W, Lea County, New Mexico.

(3) That the applicant was authorized by Order No. R-1434 to dually complete the said Learcy McBuffington Well No. 5 in such a manner as to permit the production of oil from an undesignated Paddock pool and the production of oil from the Justis-Elleberger Pool.

(4) That the applicant proposes that said Order No. R-1434 be superseded and that the applicant be authorized to dually complete the above-described Learcy McBuffington Well No. 5 in such a manner as to permit the production of oil from an undesignated Paddock pool and the production of oil from the Justis-Blinebry

-2-

Case No. 1827
Order No. R-1434-A

Pool through parallel strings of 2-3/8 inch OD EUE and 2-7/8 inch Hydril tubing, respectively.

(5) That the mechanics of the proposed dual completion are feasible and in accord with good conservation practices.

(6) That approval of the proposed dual completion will neither cause waste nor impair correlative rights.

IT IS THEREFORE ORDERED:

(1) That Order No. R-1434 be and the same is hereby superseded.

(2) That the applicant be and the same is hereby authorized to dually complete the Learcy McBuffington Well No. 5, located 1650 feet from the South line and 1980 feet from the East line of Section 13, Township 25 South, Range 37 East, NMPM, Lea County, New Mexico, in such a manner as to permit the production of oil from an undesignated Paddock pool and the production of oil from the Justis-Blinbry Pool through parallel strings of 2-3/8 inch OD EUE and 2-7/8 inch Hydril tubing, respectively.

PROVIDED HOWEVER, That applicant shall complete, operate, and produce said well in accordance with the provisions of Section V, Rule 112-A.

PROVIDED FURTHER, That applicant shall take packer-leakage tests upon completion and annually thereafter during the Annual Gas-Oil Ratio Test Period for the Justis-Blinbry Pool.

IT IS FURTHER ORDERED:

That jurisdiction of this cause is hereby retained by the Commission for such further order or orders as may seem necessary or convenient for the prevention of waste and/or protection of correlative rights; upon failure of applicant to comply with any requirement of this order, after proper notice and hearing the Commission may terminate the authority hereby granted and require applicant or its successors and assigns to limit its activities to regular single-zone production in the interests of conservation.

-3-

Case No. 1827

Order No. R-1434-A

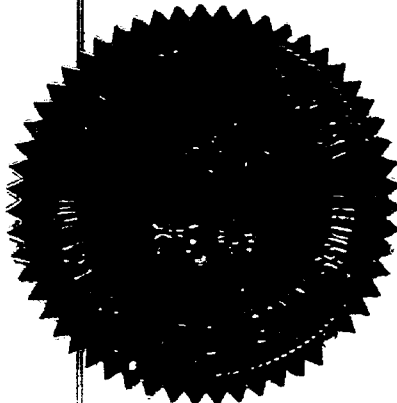
DONE at Santa Fe, New Mexico, on the day and year herein-
above designated.

STATE OF NEW MEXICO
OIL CONSERVATION COMMISSION

John Burroughs
JOHN BURROUGHS, Chairman

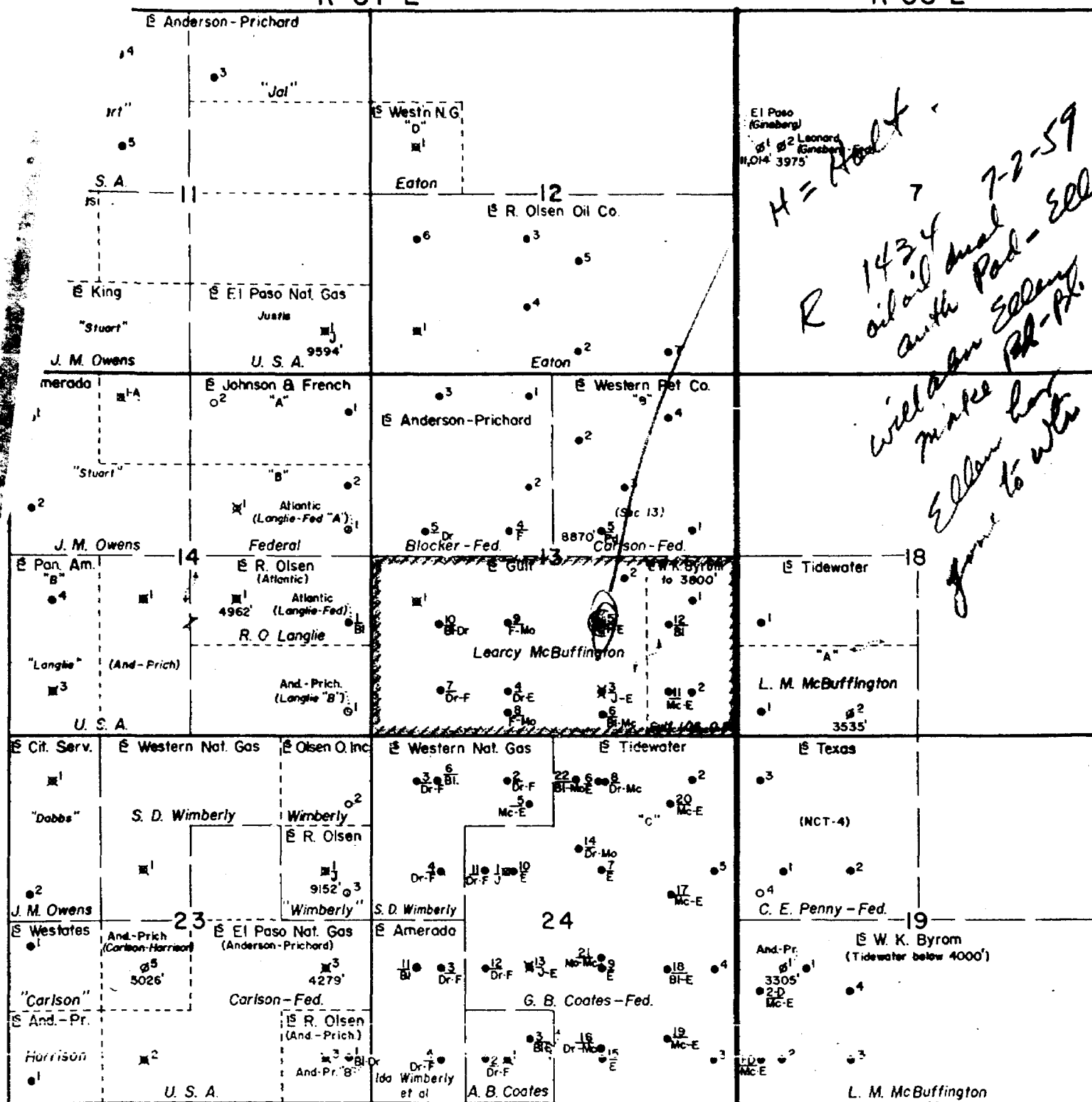
Murray E. Morgan
MURRAY E. MORGAN, Member

A. L. Porter, Jr.
A. L. PORTER, Jr., Member & Secretary



ven/

R-38-E.



El Paso
(Ginsberg)
61 62
11,014 397

EI Paso
(Ginsberg)
Box 2 Leonard
(Ginsberg)
OK 3975

H = Root

R 1434
oil oil dual
auth Pad - ELLam.
will be ELLam.
make Pad - Pk.
ELLam has
gone to with

18

15 Tidewater

T
25
S

T
25
S

BEFORE EXAMINER NUTTER

CIL CONSERVATION COMMISSION

Appl. - EXHIBIT NO. 1827
CASE NO.

LEASE PLAT

LEARCY McBUFFINGTON

LEA COUNTY, NEW MEXICO

-LEGEND-

- ☐ Pertinent Gulf Lease
☒ Pertinent Gulf Well

Gulf Oil Corporation.

Dec. 11, 1959

Exhibit No. 1
Case No. 1827



PETROLEUM AND ITS PRODUCTS

GULF OIL CORPORATION

P. O. DRAWER 1290 · FORT WORTH 1, TEXAS

H. P. REARDON
DIVISION
PETROLEUM ENGINEER

FORT WORTH
PRODUCTION DIVISION

November 11, 1959

Oil Conservation Commission
State of New Mexico
P. O. Box 871
Santa Fe, New Mexico

Re: Application for an Order Amending R-1434 in Case 1701
to Permit Gulf to Oil-Oil Dually Complete Learcy Mc-
Buffington Well No. 5 in an Undesignated Paddock Pool
and in the Justis-Blinbry Pool

Gentlemen:

New Mexico Oil Conservation Commission Order R-1434 dated July 2, 1959, authorized Gulf to oil-oil dually complete L. McBuffington Well No. 5 in an undesignated Paddock Pool and in the Justis-Ellenburger Pool; however, applicant now proposes to abandon the Ellenburger formation and recomplete in the Justis-Blinbry Pool. Therefore, Gulf Oil Corporation herewith makes application for an order amending R-1434 in Case 1701 authorizing Gulf to dually complete subject well in such a manner that the Justis-Blinbry and an undesignated Paddock oil reservoir may be produced through parallel strings of tubing. A hearing is being requested for this oil-oil dual as the two zones involved have not previously been approved by the Commission.

In support of this application, Gulf offers the following:

- (a) Applicant is the owner and operator of all producing rights below 3800 feet in the Learcy McBuffington Lease, which consists of the S/2 of Section 13, T-25-S, R-37-E, Lea County, New Mexico. Subject well is located 1650 feet from the south line and 1980 feet from the east line of said Section 13.
- (b) The 13-3/8" casing in subject well was set at 423 feet and the cement circulated. The 9-5/8" casing was set at 3450 feet and the cement circulated with 2350 sacks. This well was drilled to a total depth of 8300 feet and the 7" casing was set at 8260 feet with top of cement outside the 7" indicated at 2575 feet. In plugging back to the Blinbry pay, applicant proposes to set plugs at approximately 8150 feet and 5570 feet, as shown on the attached sketch.
- (c) If approved, the subject well will be dually completed through the use of parallel strings of tubing

Cancel
R-1434
Noted
Mailed
11-30-59
JH

Ex-11
Hewins
Dec. 11

Case 1827

November 11, 1959

as shown on the attached diagrammatic sketch. The two producing intervals will be separated by means of a Baker Production Packer set at approximately 5050 feet, which is capable of withstanding any differential in pressures expected to be encountered between the two producing formations.

The manner and method of the proposed dual completion is mechanically feasible and practical and the granting of this application is in the interest of conservation and the protection of correlative rights. Applicant will comply with all rules and regulations of the New Mexico Oil Conservation Commission to maintain separation of production from the two pays.

By copy of this letter of application, all offset operators are notified of the proposed dual completion.

Respectfully submitted,

GULF OIL CORPORATION

By: H. P. Pearson
Division Petroleum Engineer

cc: Oil Conservation Commission
P. O. Box 2045
Hobbs, New Mexico

Anderson-Prichard Oil Corporation
P. O. Box 196
Midland, Texas

W. K. Byrom
1000 Dal Paso
Hobbs, New Mexico

R. Olsen Oil Company
Drawer Z
Jal, New Mexico

Texaco, Inc.
P. O. Box 1270
Midland, Texas

Tidewater Oil Company
Att'n: J. B. Holloway
P. O. Box 1404
Houston, Texas

Western Natural Gas Company
Midland Tower Building
Midland, Texas

Western Petroleum Company
291 Sutter Street
San Francisco, California

Texas-New Mexico Pipe Line Company
P. O. Box 1510
Midland, Texas

