

CASE 1837: Application of CONTINENTAL
for an oil-oil dual of its Baish "A"
Well No. 27.

Case No.

1837

Application, Transcript,
Small Exhibits, Etc.

JANUARY 6, 1960

DEARNLEY-MEIER REPORTING SERVICE, Inc.

PHONE CH 3-6691

ALBUQUERQUE, NEW MEXICO

BEFORE THE
OIL CONSERVATION COMMISSION
SANTA FE, NEW MEXICO
JANUARY 6, 1960

IN THE MATTER OF:

CASE 1837: Application of Continental Oil Company for
an oil-oil dual completion. Applicant, in
the above-styled cause, seeks an order
authorizing the dual completion of its Baish
"A" Well No. 27, located in the NE/4 SE/4
of Section 21, Township 17 South, Range 32
East, Lea County, New Mexico, in such a man-
ner as to permit the production of oil from
an undesignated Wolfcamp pool through paral-
lel strings of tubing.

BEFORE:

Daniel S. Nutter, Examiner.

TRANSCRIPT OF HEARING

MR. NUTTER: We will take next Case 1837.

MR. PAYNE: Case 1837. Application of Continental
Oil Company for an oil-oil dual completion.

MR. KELLAHIN: If the Commission please, I ask the
record to show the same appearances as in Case 1835. Our witness
will be Mr. E. D. Coltharp.

E. D. COLTHARP

called as a witness, having been first duly sworn, testified as
follows:

DIRECT EXAMINATION



BY: MR. KELLAHIN:

Q Will you state your name, please?

A E. D. Coltharp.

Q By whom are you employed and in what position, Mr. Coltharp?

A With Continental Oil Company as district engineer in the Artesia, New Mexico District.

Q Have you had any training or experience as a petroleum engineer?

A Yes, sir, I have.

Q Would you outline that for the benefit of the Commission, please.

A I graduated with a BS degree in petroleum engineering from the University of Texas, was with the Texas Railroad Commission for a year and a half after that.

Q In what capacity?

A As field engineer and examiner, with W. H. Bryant, Independent, four years; Continental Oil Company two years and a half, as district engineer for a year and a half.

Q Where are you presently located?

A Located presently at Artesia.

MR. KELLAHIN: Are the witness' qualifications acceptable?

MR. NUTTER: Yes, sir. Please proceed.

Q (By Mr. Kellahin) Are you familiar with the applica-



tion in Case 1837?

A Yes, sir, I am.

Q Would you state briefly what is proposed in this application?

A This is the application of Continental Oil Company for a dual completion, oil-oil dual completion, of its ME Baish "A" No. 27 well in an undesignated Wolfcamp and Abo formation, located 1980 from the South line, 810 feet from the East line, Section 21, Township 17 South, Range 32 East, Lea County, New Mexico.

Q Before we get into a discussion of the dual completion, would you outline briefly the history of this well?

A This well was originally drilled to a total depth of about 13,670 feet. The Devonian formation was found to be non-productive. The well was then plugged back to approximately 12,400 feet, and the Cisco formation was tested, however, this zone had very small oil production and declined pretty rapidly, and we plugged it on back to the Wolfcamp formation, where we had a potential test of 145 barrels of oil per day and 145 barrels of water per day. The gas volume was too small to measure at that time.

Q What are the perforations in the Wolfcamp?

A The perforations that we produce from are 9,850 feet to 9,862 feet. This is measured from the Kelly Bushman measurement.

Q Following that completion, what occurred in the well?



DEARNLEY-MEIER REPORTING SERVICE, Inc.

PHONE CH 3-6611

ALBUQUERQUE, NEW MEXICO

A The Abo formation was then tested from the interval of 8,977 to 8,987, approximately ten feet of perforations were opened, and also we tried a little lower zone, however, water and communication caused us to squeeze the next interval, which was from 9,004 to 9,013. The initial potential of this well at the upper perforations of 8,977 to 8,987 was four hundred and seventy barrels of oil per day, no water, through a quarter inch choke, and gas-oil ratio of twelve to nine. The cumulative production from this Abo formation to November 1, 1959, was 6,503 barrels of oil; however, to January the 1st, 1960, it is approximately 12,000 barrels of oil.

Q It is presently being produced from the Abo, is that correct?

A Yes, sir.

Q Referring to what has been marked Exhibit No. 1, will you discuss that exhibit, please?

A Exhibit 1 is a location and ownership plat showing the ME Baish "A" lease and the surrounding area. The ME Baish lease is indicated by the red, and the ME Baish "A" No. 27 well is circled in red.

Q Now, referring to what has been marked as Exhibit No. 2, will you discuss that exhibit?

A Exhibit No. 2 is just a section of the gamma-ray zonic log which shows or indicates that the top of each of these zones, top of the Abo formation at approximately 7608, and the Abo



perforations at 8977 to 8986. The top of the Wolfcamp formation at 9108, top of the Wolfcamp perforations at 9850 to 62.

Q Now, referring to what has been marked as Exhibit No. 3 will you discuss that exhibit.

A Exhibit No. 3 is a schematic diagram of the proposed method of dual completion. As shown in this diagram, the proposed dual completion will be accomplished by producing both zones through two inch tubing.

MR. PAYNE: Two inch or two and three-eighths?

A Two and three-eighths, that's the common normal size. Two and three-eighths inch is the correct measurement, that's OD measurement. We propose setting a Baker model "D" production packer at 9750 to separate the two producing zones, and we are placing a dual production packer at approximately 8950, which would be just above the Abo perforations, and then also on the left-hand side it shows the casing size, the depth, and the top of the cement. The cement, by temperature survey on the oil string was indicated to come back up to 6700 feet on the surface pipe, and the intermediate string, the cement was circulated.

Q Now, in your opinion, are the Abo and Wolfcamp formations capable of being produced?

A Yes, sir, they are.

Q Will the well be equipped in such a manner that there will be no commingling of any sort in the well bore?

A Yes, sir, it will be.

DEARNLEY-MEIER REPORTING SERVICE, Inc.

PHONE CH 3-6691

ALBUQUERQUE, NEW MEXICO



DEARNLEY-MEIER REPORTING SERVICE, Inc.

PHONE CH 3-6691

ALBUQUERQUE, NEW MEXICO

Q Will the battery and lease equipment be provided to prevent any commingling of fluids in the two zones?

A They will be separated all the way to the pipe line.

Q Is the proposed dual completion mechanically and economically feasible, in your opinion?

A Yes, sir, it is.

Q Will you be able in this type of dual completion, to make adequate packer leakage tests or any other tests that may be required by the Commission?

A Yes, sir, we will be.

Q How will those tests be accomplished?

A By shutting off the required length of time.

Q In your opinion, will the approval of this application result in the prevention of waste and result in the protection of correlative rights?

A Yes, sir.

Q Were Exhibits 1, 2, and 3 prepared by you or under your direction and supervision?

A Yes, sir, they were.

MR. KELLAHIN: At this time we would like to offer in evidence Exhibits 1, 2, and 3.

MR. NUTTER: Continental's Exhibits 1, 2, and 3 will be entered.

MR. KELLAHIN: That's all the questions I have.

MR. NUTTER: Does anyone have any questions of Mr.



Coltharp?

MR. PAYNE: Yes, sir.

MR. NUTTER: Mr. Payne.

CROSS EXAMINATION

BY: MR. PAYNE:

Q Mr. Coltharp, has this well already been dually completed?

A No, sir.

Q It is producing from the Abo now, is that correct?

A Yes, sir.

Q Do you have the gravity of the Abo fluid?

A Yes, sir, the gravity of the Abo fluid was 42.4 degrees API.

Q What do you anticipate the Wolfcamp will be?

A We have checked the Wolfcamp, and on the test and everything, it was 38.6.

Q Are both of these pools presently undesignated?

A Yes, sir.

Q But the well is within the horizontal limits of the Maljamar pool?

A Yes, sir.

Q Now, do you have a gas-oil ratio on the two zones?

A The gas-oil ratio on the Abo was 1209 as previously stated, and likewise, the gas-oil ratio on the Wolfcamp was too small to measure. We were making a hundred barrels of water a day

DEARNLEY-MEIER REPORTING SERVICE, Inc.

ALBUQUERQUE, NEW MEXICO PHONE CH 3-6691



on test.

Q What about pressure?

A The pressure, the static bottom hole pressure on the Abo formation was 3322 taken at the mid-point of the perforations. The Wolfcamp, the only pressure we were able to get on it was on a DST. Initial DST was 2690. That was a thirty minute drill stem test.

Q In view of these variations in gravity, gas-oil ratio and pressure, you would be able to detect a packer leak relatively easy, isn't that correct?

A Yes, sir, we would notice it fairly rapidly.

MR. PAYNE: That's all.

MR. NUTTER: Any further questions?

MR. KELLAHIN: I have one I would like to ask.

REDIRECT EXAMINATION

BY: MR. KELLAHIN:

Q Is this well within the vertical limits of the Maljamar Co-operative Repressuring Agreement?

A Not in the vertical; horizontal. The Maljamar Co-operative is only down through the Grayburg and San Andres.

MR. KELLAHIN: That's all.

MR. NUTTER: The witness may be excused if there are no further questions.

(Witness excused.)

MR. NUTTER: Does anyone have anything further in

DEARNLEY-MEIER REPORTING SERVICE, Inc.

PHONE CH 3-6691

ALBUQUERQUE, NEW MEXICO



Case 1837? Take that cause under advisement and take a fifteen minute recess.

STATE OF NEW MEXICO)
COUNTY OF BERNALILLO)

I, J. A. Trujillo, Notary Public in and for the County of Bernalillo, State of New Mexico, do hereby certify that the foregoing and attached Transcript of Proceedings before the New Mexico Oil Conservation Commission was reported by me in Stenotype and reduced to typewritten transcript by me, and that the same is a true and correct record to the best of my knowledge, skill and ability.

WITNESS my Hand and Seal this, the 13th day of January, 1960, in the City of Albuquerque, County of Bernalillo, State of New Mexico.

Joseph A. Trujillo
NOTARY PUBLIC

My Commission Expires:

October 5, 1960

I do hereby certify that the foregoing is a complete record of the proceedings in the Examiner hearing of Case No. 1837, heard by me on 1-6, 1960.

[Signature], Examiner
New Mexico Oil Conservation Commission

DEARNLEY-MEIER REPORTING SERVICE, Inc.

PHONE CH 3-6691

ALBUQUERQUE, NEW MEXICO



BEFORE THE OIL CONSERVATION COMMISSION
OF THE STATE OF NEW MEXICO

IN THE MATTER OF THE HEARING
CALLED BY THE OIL CONSERVATION
COMMISSION OF NEW MEXICO FOR
THE PURPOSE OF CONSIDERING:

CASE No. 1837
Order No. R-1581

APPLICATION OF CONTINENTAL OIL
COMPANY FOR AN OIL-OIL DUAL COM-
PLETION IN THE MALJAMAR-ABO POOL
AND IN AN UNDESIGNATED WOLFCAMP
POOL, LEA COUNTY, NEW MEXICO

ORDER OF THE COMMISSION

BY THE COMMISSION:

This cause came on for hearing at 9 o'clock a.m. on January 6, 1960, at Santa Fe, New Mexico, before Daniel S. Nutter, Examiner duly appointed by the Oil Conservation Commission of New Mexico, hereinafter referred to as the "Commission," in accordance with Rule 1214 of the Commission Rules and Regulations.

NOW, on this 18th day of January, 1960, the Commission, a quorum being present, having considered the application, the evidence adduced, and the recommendations of the Examiner, Daniel S. Nutter, and being fully advised in the premises,

FINDS:

(1) That due public notice having been given as required by law, the Commission has jurisdiction of this cause and the subject matter thereof.

(2) That the applicant is the owner and operator of the Baish "A" Well No. 27, located in the NE/4 SE/4 of Section 21, Township 17 South, Range 32 East, NMPM, Lea County, New Mexico.

(3) That the applicant proposes to dually complete the above-described Baish "A" Well No. 27 in such a manner as to permit the production of oil from the Maljamar-Abo pool and the production of oil from an undesignated Wolfcamp pool through parallel strings of 2-3/8 inch OD tubing.

(4) That the mechanics of the proposed dual completion are feasible and in accord with good conservation practices.

(5) That approval of the proposed dual completion will neither cause waste nor impair correlative rights.

-2-
Case No. 1837
Order No. R-1581

IT IS THEREFORE ORDERED:

That the applicant be and the same is hereby authorized to dually complete the Saish "A" Well No. 27, located in the NE/4 SE/4 of Section 21, Township 17 South, Range 32 East, MUM, Lea County, New Mexico, in such a manner as to permit the production of oil from the Maljamar-Abo pool and the production of oil from an undesignated Wolfcamp pool through parallel strings of 2-3/8 inch OD tubing.

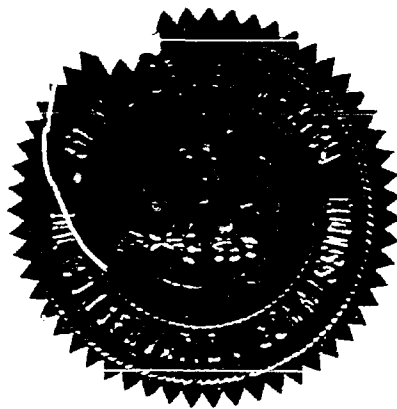
PROVIDED HOWEVER, That applicant shall complete, operate, and produce said well in accordance with the provisions of Section V, Rule 112-A.

PROVIDED FURTHER, That applicant shall take packer-leakage tests upon completion and annually thereafter during the Annual Gas-Oil Ratio Test Period for the Maljamar-Abo Pool.

IT IS FURTHER ORDERED:

That jurisdiction of this cause is hereby retained by the Commission for such further order or orders as may seem necessary or convenient for the prevention of waste and/or protection of correlative rights; upon failure of applicant to comply with any requirement of this order, after proper notice and hearing the Commission may terminate the authority hereby granted and require applicant or its successors and assigns to limit its activities to regular single-zone production in the interests of conservation.

DONE at Santa Fe, New Mexico, on the day and year hereinabove designated.



STATE OF NEW MEXICO
OIL CONSERVATION COMMISSION

John Burroughs
JOHN BURROUGHS, Chairman

Murray E. Morgan
MURRAY E. MORGAN, Member

A. L. Porter, Jr.
A. L. PORTER, Jr., Member & Secretary

vam/

R-32-E

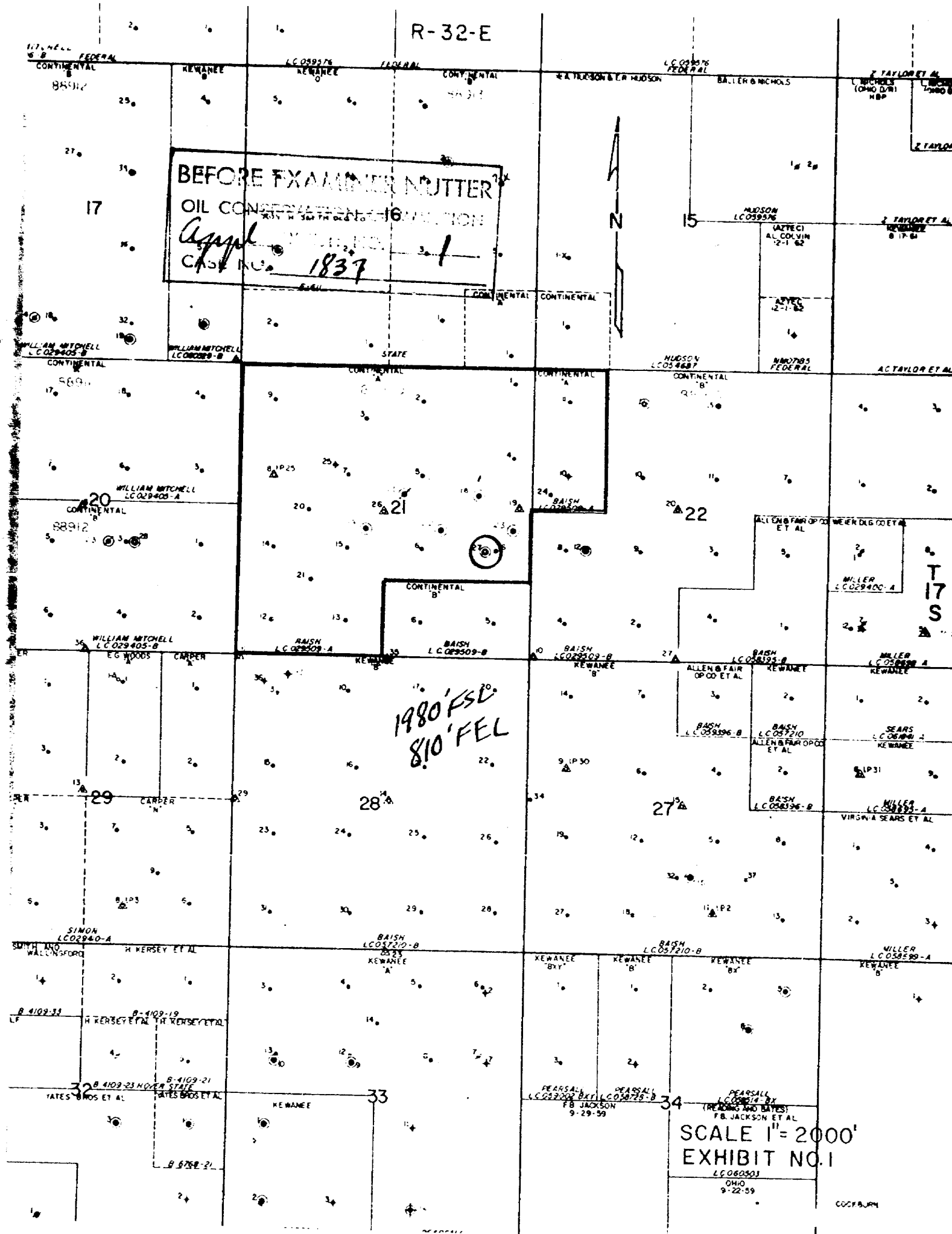
BEFORE EXAMINER NUTTER

OIL CONSERVATION

Case No. 1837

1980' FSL
810' FEL

SCALE 1" = 2000'
EXHIBIT NO. 1



CONTINENTAL OIL COMPANY
Production Department

Proposed Dual Completion Equipment and Casing Record

November 10, 1959

Dual Completion Equipment

Casing Record

Wolfcamp Tubing

Abo Tubing

13 3/8" CD casing set at 428'
w/350 sx cement circulated

2 3/8" OD Non-upset tbg.
w/turned down collars

Guiberson Dual Completion
Packer
at 8950'

12 5/8" OD csg. set at 5052'
w/4855 sx cement circulated

8977'

Abo Perforations

8987' Tbg. Perforations
at 8987'

Cement return on production
casing to 6700'

Gr: 42.4

GOR: 1209

11-1-59 6503
1-1-60 12000 R.O. cum

9004'

Abo perforations

9013' squeezed

BEFORE EXAMINER NUTTER

OIL CONSERVATION COMMISSION

EXHIBIT NO. 1

CASE NO. 1837

BHP 332V

Baker Model 3 production
packer w/tbg. seal assembly
at 9750'

Gr: 38.6

GOR: TSTM

WC BHP
DST 2690

Plug back depth 13,475'
w/reg. neat cement

7" OD csg. set to 13,642'
sx cement

ED 13,670'

Seating Nipple at 9045'

9850'

Wolfcamp Perforations

9862'

Bridge plug at 9866'

Exhibit No. III

DOCKET: EXAMINER HEARINGS JANUARY 6, 1960OIL CONSERVATION COMMISSION - 9 a.m., Mabry Hall, State Capitol, Santa Fe, New Mexico

The following cases will be heard before Daniel S. Nutter, Examiner, or A. L. Porter, Jr., Secretary-Director.

- CASE 1835: Application of Continental Oil Company for two non-standard gas proration units. Applicant, in the above-styled cause, seeks an order establishing two non-standard gas proration units in the Eumont Gas Pool, one consisting of the N/2 of Section 3, the other consisting of the S/2 of said Section 3, Township 20 South, Range 36 East, Lea County, New Mexico. Applicant proposes to dedicate the units respectively to its Reed A-3 Well No. 2, located 1980 feet from the North line and 660 feet from the East line of said Section 3 and to its Reed A-3 Well No. 3, located 1980 feet from the South line and 660 feet from the East line of said Section 3. Applicant further proposes the cancellation of an existing Eumont gas proration unit comprising the E/2 of said Section 3 and presently dedicated to the said Reed A-3 Well No. 3.
- CASE 1836: Application of Continental Oil Company for approval of an automatic custody transfer system. Applicant, in the above-styled cause, seeks an order authorizing it to install an automatic custody transfer system to handle the Arrowhead Pool production from all wells on its State J-2 lease consisting of the N/2 and the SE/4 of Section 2, Township 22 South, Range 36 East, Lea County, New Mexico.
- CASE 1837: Application of Continental Oil Company for an oil-oil dual completion. Applicant, in the above-styled cause, seeks an order authorizing the dual completion of its Balish "A" Well No. 27, located in the NE/4 SE/4 of Section 21, Township 17 South, Range 32 East, Lea County, New Mexico, in such a manner as to permit the production of oil from an undesignated Abo pool and the production of oil from an undesignated Wolfcamp pool through parallel strings of tubing.
- CASE 1838: Application of El Paso Natural Gas Company for a gas-gas dual completion. Applicant, in the above-styled cause, seeks an order authorizing the dual completion of its Huerfano Unit Well No. 111 (GD), located in Unit F, Section 20, Township 26 North, Range 9 West, San Juan County, New Mexico, in such a manner as to permit the production of gas from an undesignated Gallup pool and the production of gas from an undesignated Dakota pool through parallel strings of tubing.
- CASE 1839: Application of Franklin, Aston & Fair, Inc., for permission to commingle the production from three separate leases. Applicant, in the above-styled cause, seeks permission to commingle the Empire-Abo Pool production from three separate State leases, one in Section 6, Township 18 South, Range 28 East, and the other two in Section 31, Township 17 South, Range 28 East, Eddy County, New Mexico.
- CASE 1840: Application of Pan American Petroleum Corporation for a non-standard gas unit. Applicant, in the above-styled cause, seeks an order establishing a 264-acre non-standard gas unit in the Blanco-Pictured Cliffs Pool consisting of the N/2 of Section 6, Township 29 North, Range 9 West, San Juan County, New Mexico, to be dedicated to the Houck Gas Unit Well No. 1, located 1650 feet from the North and East lines of said Section 6.

CASE 1841:

Application of Sinclair Oil & Gas Company for the creation of a new pool in the Potash-Oil Area and for the promulgation of special rules and regulations pertaining thereto. Applicant, in the above-styled cause, seeks an order creating a new pool for Yates production in the Potash-Oil Area as defined by Order R-111-A, said pool to comprise the SE/4 NW/4 of Section 16, Township 20 South, Range 33 East, Lea County, New Mexico, and such other acreage as may reasonably be proven productive from the same common source of supply. Applicant further seeks the promulgation of special rules and regulations for said pool as follows:

A. Cable Tool Casing Program.

Same as Order R-1078 for Teas Pool.

B. Rotary Tool Casing Program.

Surface casing set at 600 feet and cement circulated. No salt protection string. Production casing to be set through pay from 3146 feet to 3232 feet (approximately) with cement circulated to at least 50 feet into surface casing.

CASE 1842:

Application of Skelly Oil Company for permission to commingle the production from two separate pools. Applicant, in the above-styled cause, seeks permission to commingle the production from the Langlie-Mattix Pool and the Drinkard Pool from all wells on its Baker "A" lease comprising the NW/4 of Section 26, Township 22 South, Range 37 East, Lea County, New Mexico.

CASE 1843:

Application of Roy H. Smith Drilling Company for permission to commingle the production from two separate pools. Applicant, in the above-styled cause, seeks permission to commingle the production from the Maljamar-Yates Pool and the Pearsall Pool from all wells on its Walker "A" lease, comprising the S/2 NE/4 of Section 5, Township 18 South, Range 32 East, Lea County, New Mexico.

CASE 1844:

Application of Texaco Inc. for permission to commingle the production from two separate pools and for permission to install an automatic custody transfer system. Applicant, in the above-styled cause, seeks an order authorizing it to commingle the production from the Justis-Ellenburger and Justis-McKee Pools from all wells on its C. E. Penny lease consisting of the NW/4 of Section 19, Township 25 South, Range 38 East, Lea County, New Mexico, and for permission to install an automatic custody transfer system to handle said commingled production.

CASE 1845:

Application of Western Natural Gas Company for an oil-gas dual completion and for an unorthodox gas well location. Applicant, in the above-styled cause, seeks an order authorizing the dual completion of its Bonnie Schlosser Federal Well No. 1, located 790 feet from the North line and 1980 feet from the West line of Section 10, Township 27 North, Range 11 West, San Juan County, New Mexico, in such a manner as to permit the production of oil from an undesignated Gallup pool and the production of gas from an undesignated Dakota pool through parallel strings of tubing. Applicant further seeks an unorthodox Dakota gas well location for the said Bonnie Schlosser Federal Well No. 1.

CASE 1846: Application of Rice Engineering and Operating, Inc. for an order authorizing a salt water disposal well. Applicant, in the above-styled cause, seeks an order authorizing it to recompleate the Lowe Oberholtzer Well No. 2 as a salt water disposal well. Said well is located 1980 feet from the North and East lines of Section 8, Township 12 South, Range 38 East, Gladiola Pool, Lea County, New Mexico. Applicant proposes to inject the produced salt water in the Devonian formation in the interval from 12,223 feet to 12,500 feet.

CASE 1847: Application of Rice Engineering and Operating, Inc. for an order authorizing a salt water disposal well. Applicant, in the above-styled cause, seeks an order authorizing the disposal of produced salt water through its Hobbs SWD Well No. F-29 to be located 1880 feet from the North line and 1742 feet from the West line of Section 29, Township 18 South, Range 38 East, Hobbs, Pool, Lea County, New Mexico. Applicant proposes to inject the produced salt water into the San Andres formation in the interval from 4700 feet to 5000 feet.

CASE 1848: Application of El Paso Natural Gas Company for an exception to Paragraph 3 of Order R-1065. Applicant, in the above-styled cause, seeks an extension of time to make up the accrued underproduction of the Jones 4-A Well (a pressure build-up test well), located in Unit B, Section 13, Township 28 North, Range 8 West, Blanco-Mesaverde Pool, San Juan County, New Mexico.

CASE 1849: Application of Western Natural Gas Company for an exception to the over-production shut-in provisions of Order R-520, as amended by Order No. R-967, for 3 wells in the Jalmat Gas Pool. Applicant, in the above-styled cause, seeks an order permitting the following-described gas wells in the Jalmat Gas Pool, Lea County, New Mexico, to compensate for their overproduced status without being completely shut-in in order to prevent possible waste.

Wells Federal No. 1 Well, SW/4 NE/4 of Section 6,
T-26-S, R-37-E.

Guthrie No. 1 Well, SW/4 SE/4 of Section 34,
T-23-S, R-36-E.

State McDonald A-15 Well No. 1, NW/4 SW/4 of Section 15,
T-22-S, R-36-E.

Case 1837



11/11/59

NOV 11 1959

CONTINENTAL OIL COMPANY

825 PETROLEUM BUILDING
ROSWELL, NEW MEXICO

WM. A. MEAD
DIVISION SUPERINTENDENT
OF PRODUCTION
NEW MEXICO DIVISION

November 24, 1959

New Mexico Oil Conservation Commission
Post Office Box 871
Santa Fe, New Mexico

Attention: Mr. A. L. Porter, Jr., Secretary-Director

Gentlemen:

Re: Continental Oil Company's
Application for Dual Comple-
tion of its Baish "A" No. 27
in the undesignated Abo and
Wolfcamp Oil Pools, Section 21-
17S-32E, Lea County, New Mexico

We are attaching three copies of Continental Oil Com-
pany's Application for Dual Completion of its Baish "A" No. 27
in the undesignated Abo and Wolfcamp Oil Pools.

Please set this application for hearing at the earliest
convenient date.

Yours very truly,

W. A. Mead

WAM-BR
cc: CHH HLJ HGD

*Checked
mailed
12-27-59*

NEW MEXICO OIL CONSERVATION COMMISSION
SANTA FE, NEW MEXICO

7-3-58

APPLICATION FOR DUAL COMPLETION

| | | | | |
|--|-------------------|-------------------------|------------------------|----------------------------------|
| Field Name <u>Undesignated Abo and Wolfcamp</u> | | | County <u>Lea</u> | Date <u>November 16, 1959</u> |
| Operator <u>Continental Oil Company</u> | | Lease <u>Baish A</u> | | Well No. <u>27</u> |
| Location of Well <u>T</u> | Unit <u>21</u> | Section <u>17S</u> | Township <u>32E</u> | Range |

1. Has the New Mexico Oil Conservation Commission heretofore authorized the dual completion of a well in these same pools or in the same zones within one mile of the subject well? YES NO X
2. If answer is yes, identify one such instance: Order No. _____; Operator, Lease, and Well No.:

| 3. The following facts are submitted: | Upper Zone | Lower Zone |
|--|----------------------|------------------------|
| a. Name of reservoir | <u>Abo</u> | <u>Wolfcamp</u> |
| b. Top and Bottom of Pay Section (Perforations) | <u>8977' - 8987'</u> | <u>9850' - 9862'</u> |
| c. Type of production (Oil or Gas) | <u>Oil</u> | <u>Oil</u> |
| d. Method of Production (Flowing or Artificial Lift) | <u>Flowing</u> | <u>Artificial Lift</u> |

4. The following are attached. (Please mark YES or NO)

- Yes a. Diagrammatic Sketch of the Dual Completion, showing all casing strings, including size and setting, top of cement, perforated intervals, tubing strings, including diameters and setting depth, location and type of packers and side door chokes, and such other information as may be pertinent.
- Yes b. Plat showing the location of all wells on applicant's lease, all offset wells on offset leases, and the names and addresses of operators of all leases offsetting applicant's lease.
- No c. Waivers consenting to such dual completion from each offset operator, or in lieu thereof, evidence that said offset operators have been furnished copies of the application.*
- Yes d. Electrical log of the well or other acceptable log with tops and bottoms of producing zones and intervals of perforation indicated thereon. (If such log is not available at the time application is filed, it shall be submitted as provided by Rule 112-A.)

| | | |
|--|----------------------------|----------------------------|
| 5. List all offset operators to the lease on which this well is located together with their correct mailing address. | | |
| <u>Carper Drilling Company</u> | <u>Carper Building</u> | <u>Artesia, New Mexico</u> |
| <u>Kewanee Oil Company</u> | <u>Box 2239</u> | <u>Tulsa, Oklahoma</u> |
| <u>Hudson & Hudson</u> | <u>1810 Electric Bldg.</u> | <u>Fort Worth, Texas</u> |

6. Were all operators listed in Item 5 above notified and furnished a copy of this application? YES NO X. If answer is yes, give date of such notification _____.

CERTIFICATE: I, the undersigned, state that I am the Division Superintendent of the Continental Oil Co. (company), and that I am authorized by said company to make this report; and that this report was prepared under my supervision and direction and that the facts stated therein are true, correct and complete to the best of my knowledge.

NMOCC (3) CHH
HLJ File
HGD JWK

W. C. Mead
Signature

* Should waivers from all offset operators not accompany an application for administrative approval, the New Mexico Oil Conservation Commission will hold the application for a period of twenty (20) days from date of receipt by the Commission's Santa Fe office. If, after said twenty-day period, no protest nor request for hearing is received by the Santa Fe office, the application will then be processed.

NOTE: If the proposed dual completion will result in an unorthodox well location and/or a non-standard proration unit in either or both of the producing zones, then separate application for approval of the same should be filed simultaneously with this application.