



HRC, Inc.
P.O. Box 1606
Hobbs, NM 88241-6056
(575) 393-6662 (575) 393-6662 Fax

February 24, 2021

Jim Griswold
Senior Hydrologist
ENMRD/Oil Conservation Division
1220 South St. Francis Drive
Santa Fe, NM 87505


Ref: 2020 Annual Report
Schubert Farms No. 1 (API # 30-025-37548)

Dear Mr. Griswold,

Attached please find the Annual Report of Operations numbers for the Hobbs Facility for the year of 2020. Please review and report back any questions or comments.

Thank you.

Sincerely,


Gary M. Schubert
GMS/br

Attachments

H.R.C., Inc.

ANNUAL CLASS III WELL REPORT

H.R.C., INC.

YEARLY REPORT (BW-036)

API 30-025-37548

February 18, 2021

DAVID ALVARADO

(ACTING AGENT FOR H.R.C., INC.)

H.R.C., Inc.

20.6.2.3107 NMAC MONITORING, REPORTING, AND OTHER REQUIERMENTS

SUMMARY OF CLASS III OPERATIONS 2020

Schubert Farms Well # 1 production operations in 2020 recorded a downward trend as the COVID Pandemic became priority as the industry's ability to establish safety protections and adapt to the NMDOH and CDC regulations. H.R.C., Inc. quickly placed into action for its team the methods of protection by wearing appropriate masks, hand sanitizers, aerosols and nitrile gloves in the field and office, tickets were gathered where they were stored in plastic bags and handled diligently for the least exposure possible to its employees. In 2019 a total of 263,276 bbl. of brine was extracted where in 2020 a total of 223,276 bbl. were extracted a difference of 39,651 bbl. less than 2019 or respectfully 84.9% of 2019. In 2020 there were no leaks that occurred during the fiscal year. In December a new impeller with shaft was installed in the RFD pump. With the new installation of the impeller the pump gained more efficiency allowing the pump to be slowed down to 53.2 Hz. while extraction of brine stayed the same. The fresh water systems and well are well insulated protecting the fresh water total system from freezing. All meters and valves were well protected and are in good working condition.

H.R.C., Inc. Preventive maintenance scheduled plan is to replace any connections or valves that could be showing wear. This will continue as a safe operating condition and it will continue in 2021 as needed. Connections are changed when the first sign of salt is seen behind the threaded end.

During 2020 the transfer pump that transports brine to the sales tanks required a mechanical seal replaced in the month of September. This is a common task due to the abrasion of the 9.98 PPG brine. In replacing the seals fresh water was used to clean out the lines and valves were shut in allowing the connecting unions to be broken to prevent any impact to the ground within the pump shop where the pump resides.

Daily inspections of all lines and connections are visually looked at during a walk around of the facility tanks. All lines are each walked and visually inspected that lead to the pump house. Readings on pressure gauges are recorded with the reading of the brine output meter and the

H.R.C., Inc.

injection of fresh water are recorded on the day to month logs. Safety shut off mechanisms are tested to insure if high or low pressures were to occur all systems would shut down.

A total of 223,625 Bbl. of brine was extracted and weighed at an average of 9.89 PPG or a SG of 1.1851 in 2020. Production of brine slowed down due to demand of brine during the months of April, May, June, and July, attributed to COVID 19 slowdown of the oil Industry. Brine sales started rebounding in October and held steady at a means of 25,830 bbl. per month for the rest of 2020.

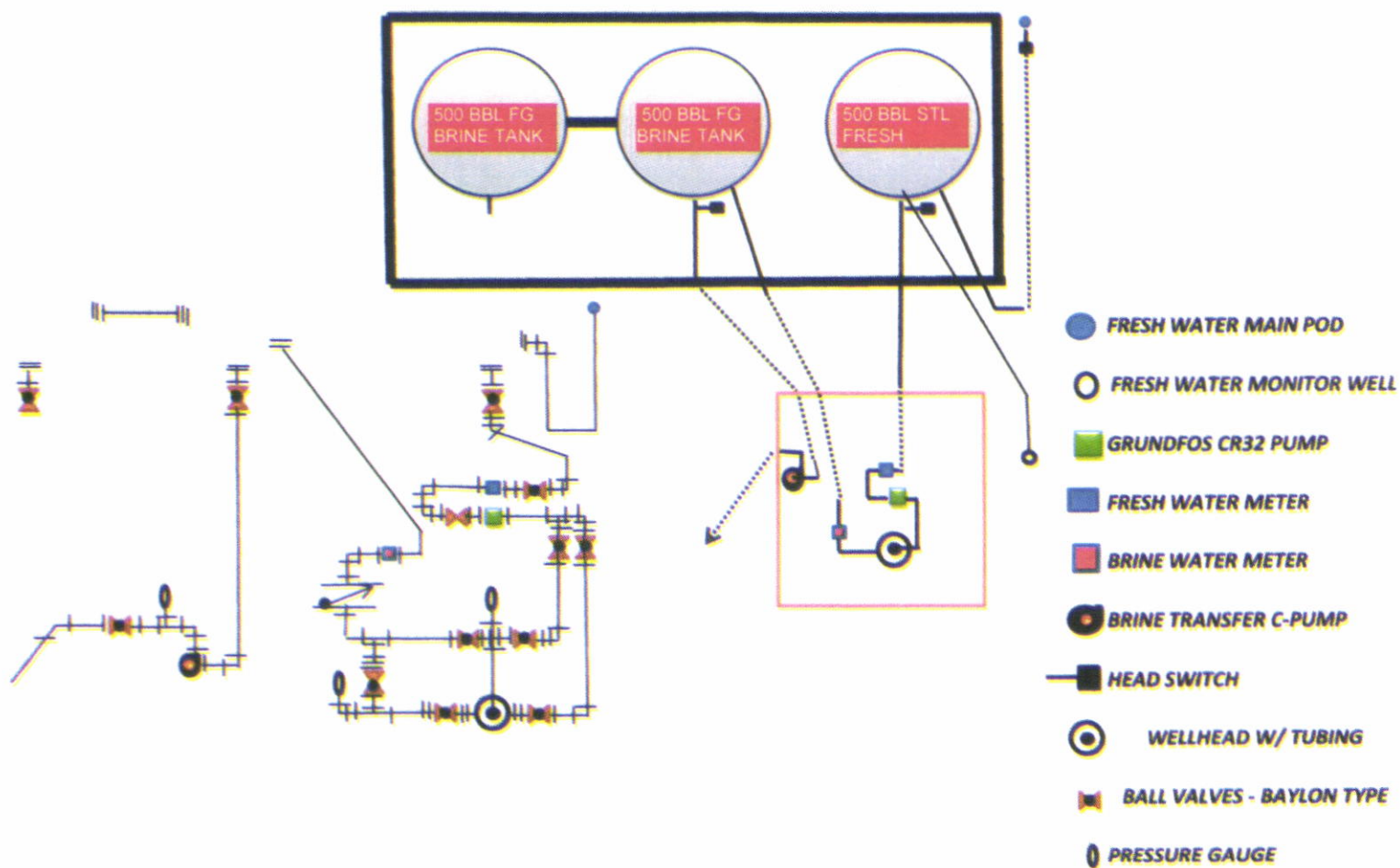
H.R.C., Inc. Schubert Farms # 1 is an asset and continues to assist in the needs of the Industry.

Please find below an isotope schematic of the facility's operation equipment on the BW-36. No modifications were done in 2020 and the Isotope of the facility stands as is.

H.R.C., Inc.

SCHUBERT FARMS No. 1
API # 30-025-37548
UL: B, SEC 25, T19S, R34E

FACILITY ISOTOPE



H.R.C., Inc.

2020 FLUID INJECTION & BRINE PRODUCTION VOLUME

MONTH	BRINE	FRESH WATER	
JANUARY	23,319	23,098	
FEBRUARY	13,446	13,282	
MARCH	22,734	22,517	
APRIL	13,047	12,869	
MAY	13,526	13,321	
JUNE	5,901	5,840	
JULY	12,314	12,126	
AUGUST	21,698	21,474	
SEPTEMBER	20,148	19,995	
OCTOBER	21,239	21,031	
NOVEMBER	27,587	27,321	
DECEMBER	28,666	28,373	
YEAR TOTAL	223,625	221,247	

YEARLY TOTALS BRINE & FRESH

YEAR	BRINE	FRESH		
2017	153,518	148,678		
2018	306,806	303,899		
2019	263,276	261,658		
2020	223,625	221,247		
TOTAL	946,865	935,482		

H.R.C., Inc.

Semi-Annual Monitor Well Analytical Data Results

Monitor well for the BW-36 last testing for 2019 is on record with OCD, Cardinal Laboratories performed and sampled water from the monitor well on December 20, 2019 for your review. Cardinal Laboratories is accredited through Texas NELAP under certificate number T104704398-20-13 for 6/04/20 and 12/04/20

Cardinal Laboratories is accredited through the State of Colorado Department of Public Health and Environment for:

Method EPA 552.2 Total Haloacetic Acids (HAA-5)

Method EPA 524.2 Total Trihalomethanes (TTHM)

Method EPA 524.4 Regulated VOCs (V1, V2, V3)

Cardinal Laboratories is accredited through the State of New Mexico Environment Department for:

Method SM 9223-B Total Coliform and E. coli (Colilert MMO-MUG)

Method EPA 524.2 Regulated VOCs and Total Trihalomethanes (TTHM)

Method EPA 552.2 Total Haloacetic Acids (HAA-5)

Please find the Table below comparison of the June 2020 sample and December 2020 sample for Inorganic Compounds and Total Recovery Metals by ICP (E200.7) full detail of the Analytical results are attached at the end of this report for your viewing.

Analyte	Result	MDL	Reporting Limit	Units	Analyzed Date	Method
---------	--------	-----	-----------------	-------	---------------	--------

FW MONITOR INORGANIC COMPOUNDS JUNE 2020

Alkalinity, Bicarbonate	234		5.00	mg/L	6-05-20	310.1
Alkalinity Carbonate	<1.00		1.00	mg/L	6-05-20	310.1
Chloride	356		4.00	mg/L	6-05-20	4500-C1-B
Conductivity	1960		1.0	uS/cm	6-05-20	120.1
pH	7.73		0.100	pH Units	6-05-20	150.1

H.R.C., Inc.

Sulfate	260		50.0	mg/L	6-11-20	375.4
TDS	1170		5.0	mg/L	6-08-20	160.1
Alkalinity Total	192		4.0	mg/L	6-05-20	310.1

FW MONITOR TOTAL RECOVERABLE METALS by ICP (E220.7)

Continued Report for June 2020

Analyte	Result	MDL	Reporting Limit	Units	Analyzed Date	Method
---------	--------	-----	--------------------	-------	------------------	--------

Calcium	179		0.500	mg/L	6-10-20	EPA200.7
Magnesium	51.5		0.500	mg/L	6-10-20	EPA200.7
Potassium	5.39	0.758	5.00	mg/L	6-10-20	EPA200.7
Sodium	126		5.00	mg/L	6-10-20	EPA200.7

FW MONITOR DECEMBER 2020 RESULTS

Analyte	Result	MDL	Reporting Limit	Units	Analyzed Date	Method
---------	--------	-----	--------------------	-------	------------------	--------

INORGANIC COMPOUNDS

Alkalinity, Bicarbonate	220		5.0	mg/L	12-07-20	310.1
Alkalinity Carbonate	<1.00		1.00	mg/L	12-07-20	310.1
Chloride	372		4.0	mg/L	12-07-20	4500-C1-B
Conductivity	2060		1.00	umhos/cm@	12-07-20	120.1
pH	7.52		0.100	pH Units	12-07-20	150.1
Sulfate	263		50.0	mg/L	12-10-20	375.4
TDS	1160		5.00	mg/L	12-11-20	160.1
Alkalinity Total	180		4.0	mg/L	12-07-20	310.1

H.R.C., Inc.

FW MONITOR TOTAL RECOVERABLE METALS by ICP (E220.7)

Calcium	185		0.500	mg/L	12-11-20	EPA200.7
Magnesium	53.8		0.500	mg/L	12-11-20	EPA200.7
Potassium	5.23	0.758	5.00	mg/L	12-11-20	EPA200.7
Sodium	135		5.00	mg/L	12-11-20	EPA200.7

INJECTION PRESSURE

Injection pressure still runs the same the annulus average is 20 PSIG and the tubing average is at 240 PSIG the RFD pump runs at 53.2 Hz. with a yield of 28 to 29 GPM. With the new replacement of the RFD impeller and rod allowed better pump efficiency. The lease operator checks the pressure daily and records it on his daily logs.

PIPE LINE HYDROSTATIC TEST RESULTS

Lines that lead to the storage tanks from the wellhead have a hydrostatic pressure of 8.3 pounds of pressure at the base of the line at the fill tank when idle. The operating static pressure average is 11.7 psi respectively. The operating pressure is at around 20 psig. Discharge line is of 3" Polyethylene SDR 11 with a max operating pressure of 160 PSI.

Brine Water transfer line from storage tanks at the Schubert Farms Well # 1 facility to the storage point located 1.5 miles south of the Schubert Farms Well # 1 has an operating pressure of 130 psi. The second point of diversion is the transfer of brine from the storage tanks known as the Peanut Shed to the ANITZ sales facility located 0.8 miles east of WHY 18 on Nadine Rd. (P-26-19S-38E) this line is constructed of 2" SDR 11 Polyethylene Line with a max pressure of 160 psi the line enters into the west 16' holding tank at the top and has a hydrostatic pressure at the base of the line of 0 pounds of pressure at the base of the line due to the (Peanut Shed) storage tanks being higher in elevation. In the transferring operation of brine from the storage tanks (Peanut Shed) it takes 20 to 30 static pounds to move fluid through the 2" line to the ANITZ sales point. Pump # 1 runs at 26 GPM and Pump # 2 runs at 42 GPM depending on demand both pumps can be run together.

H.R.C., Inc.

Visual Leak Inspections Monitoring

H.R.C., Inc. Operation personnel walks each line that is above ground and inspects all connecting points for any sign of leaks or sweating of threads on connections daily.

The Lease Operator drives out the lines that are underground and below frost level for any signs of compromised line integrity. This is done up to four times a day.

Quarterly Chemical Analyses

Cardinal Laboratories is accredited through Texas NELAP under certificate number T104704398-20-13.

Cardinal Laboratories is accredited through the State of Colorado Department of Public Health and Environment for:

Method EPA 552.2	Total Haloacetic Acids (HAA-5)
Method EPA 524.2	Total Trihalomethanes (TTHM)
Method EPA 524.4	Regulated VOCs (V1, V2, V3)

Cardinal Laboratories is accredited through the State of New Mexico Environment Department for:

Method SM 9223-B	Total Coliform and E. coli (Colilert MMO-MUG)
Method EPA 524.2	Regulated VOCs and Total Trihalomethanes (TTHM)
Method EPA 552.2	Total Haloacetic Acids (HAA-5)

Depicted below is Cardinals Analytical Results for Brine and Fresh water at the BW-36.

With this reports is attached the Cardinals results for your viewing.

H.R.C., Inc.

BRINE ANALYTICAL RESULTS: JUNE 2020

Analyte	Result	MDL	Reporting Limit	Units	Analyzed Date	Method
---------	--------	-----	-----------------	-------	---------------	--------

INORGANIC COMPOUNDS

Alkalinity, Bicarbonate	244		5.0	mg/L	6-05-20	310.1
Alkalinity Carbonate	<1.00		1.00	mg/L	6-05-20	310.1
Chloride	186,000		4.00	mg/L	6-05-20	4500-C1-B
Conductivity	264,000		1.00	uS/cm	6-05-20	120.1
pH	6.95		0.100	pH Units	6-05-20	150.1
Sulfate	2660		1250	mg/L	6-11-20	375.4
TDS	294,000		5.00	mg/L	6-08-20	160.1
Alkalinity Total	200		4.0	mg/L	6-05-20	310.1

TOTAL RECOVERABLE METALS by ICP (E220.7)

Continued Brine Report for June 2020

Analyte	Result	MDL	Reporting Limit	Units	Analyzed Date	Method
---------	--------	-----	-----------------	-------	---------------	--------

Calcium	681		50.0	mg/L	6-10-20	EPA200.7
Magnesium	204		50.0	mg/L	6-10-20	EPA200.7
Potassium	335	75.8	500	mg/L	6-10-20	EPA200.7
Sodium	107,000		500	mg/L	6-10-20	EPA200.7

H.R.C., Inc.

BRINE ANALYTICAL RESULTS: DECEMBER 2020

Analyte	Result	MDL	Reporting Limit	Units	Analyzed Date	Method
---------	--------	-----	-----------------	-------	---------------	--------

INORGANIC COMPOUNDS

Alkalinity, Bicarbonate	244		5.0	mg/L	12-07-20	310.1
Alkalinity Carbonate	<1.00		1.00	mg/L	12-07-20	310.1
Chloride	176,000		4.00	mg/L	12-07-20	4500-C1-B
Conductivity	262,000		1.00	uS/cm	12-07-20	120.1
pH	6.9		0.100	pH Units	12-07-20	150.1
Sulfate	2310		500	mg/L	12-10-20	375.4
TDS	291,000		5.00	mg/L	12-09-20	160.1
Alkalinity Total	200		4.0	mg/L	12-07-20	310.1

TOTAL RECOVERABLE METALS by ICP (E220.7)

Continued Brine Report for December 2020

Analyte	Result	MDL	Reporting Limit	Units	Analyzed Date	Method
---------	--------	-----	-----------------	-------	---------------	--------

Calcium	750		50.0	mg/L	12-11-20	EPA200.7
Magnesium	198		50.0	mg/L	12-11-20	EPA200.7
Potassium	274	75.8	500	mg/L	12-11-20	EPA200.7
Sodium	108,000		500	mg/L	12-11-20	EPA200.7

H.R.C., Inc.

FRESH WATER ANALYTICAL RESULTS: JUNE 2020

Analyte	Result	MDL	Reporting Limit	Units	Analyzed Date	Method
---------	--------	-----	-----------------	-------	---------------	--------

INORGANIC COMPOUNDS

Alkalinity, Bicarbonate	298		5.00	mg/L	6-05-20	310.1
Alkalinity Carbonate	<1.00		1.00	mg/L	6-05-20	310.1
Chloride	284		4.00	mg/L	6-05-20	4500-C1-B
Conductivity	1730		1.00	uS/cm	6-05-20	120.1
pH	7.72		0.100	pH Units	6-05-20	150.1
Sulfate	198		50.0	mg/L	6-11-20	375.4
TDS	1070		5.00	mg/L	6-08-20	160.1
Alkalinity Total	244		4.00	mg/L	6-05-20	310.1

TOTAL RECOVERABLE METALS by ICP (E220.7)

Continued F/W Report for June 2020

Analyte	Result	MDL	Reporting Limit	Units	Analyzed Date	Method
---------	--------	-----	-----------------	-------	---------------	--------

Calcium	132		0.500	mg/L	6-10-20	EPA200.7
Magnesium	31.6		0.500	mg/L	6-10-20	EPA200.7
Potassium	14.7	0.758	5.00	mg/L	6-10-20	EPA200.7
Sodium	162		5.00	mg/L	6-10-20	EPA200.7

H.R.C., Inc.

FRESH WATER ANALYTICAL RESULTS: DECEMBER 2020

Analyte	Result	MDL	Reporting Limit	Units	Analyzed Date	Method
---------	--------	-----	-----------------	-------	---------------	--------

INORGANIC COMPOUNDS

Alkalinity, Bicarbonate	234		5.00	mg/L	12-07-20	310.1
Alkalinity Carbonate	<1.00		1.00	mg/L	12-07-20	310.1
Chloride	240		4.00	mg/L	12-07-20	4500-C1-B
Conductivity	1,620		1.00	uS/cm	12-07-20	120.1
pH	7.87		0.100	pH Units	12-07-20	150.1
Sulfate	233		50.0	mg/L	12-07-20	375.4
TDS	929		5.00	mg/L	12-09-20	160.1
Alkalinity Total	192		4.00	mg/L	12-07-20	310.1

TOTAL RECOVERABLE METALS by ICP (E220.7)

Continued F/W Report for December 2020

Analyte	Result	MDL	Reporting Limit	Units	Analyzed Date	Method
---------	--------	-----	-----------------	-------	---------------	--------

Calcium	140		0.500	mg/L	12-11-20	EPA200.7
Magnesium	39.2		0.500	mg/L	12-11-20	EPA200.7
Potassium	4.37	0.758	5.00	mg/L	12-11-20	EPA200.7
Sodium	124		5.00	mg/L	12-11-20	EPA200.7

H.R.C., Inc.

MECHANICAL INTEGRITY TEST CHART

A formation mechanical test was performed on 2/23/17 on the BW-36. The Salado Formation was pressured up to 320 psi and was witnessed by a district officer and C-103 approved by Mark Whitaker in Hobbs on 11/15/17.

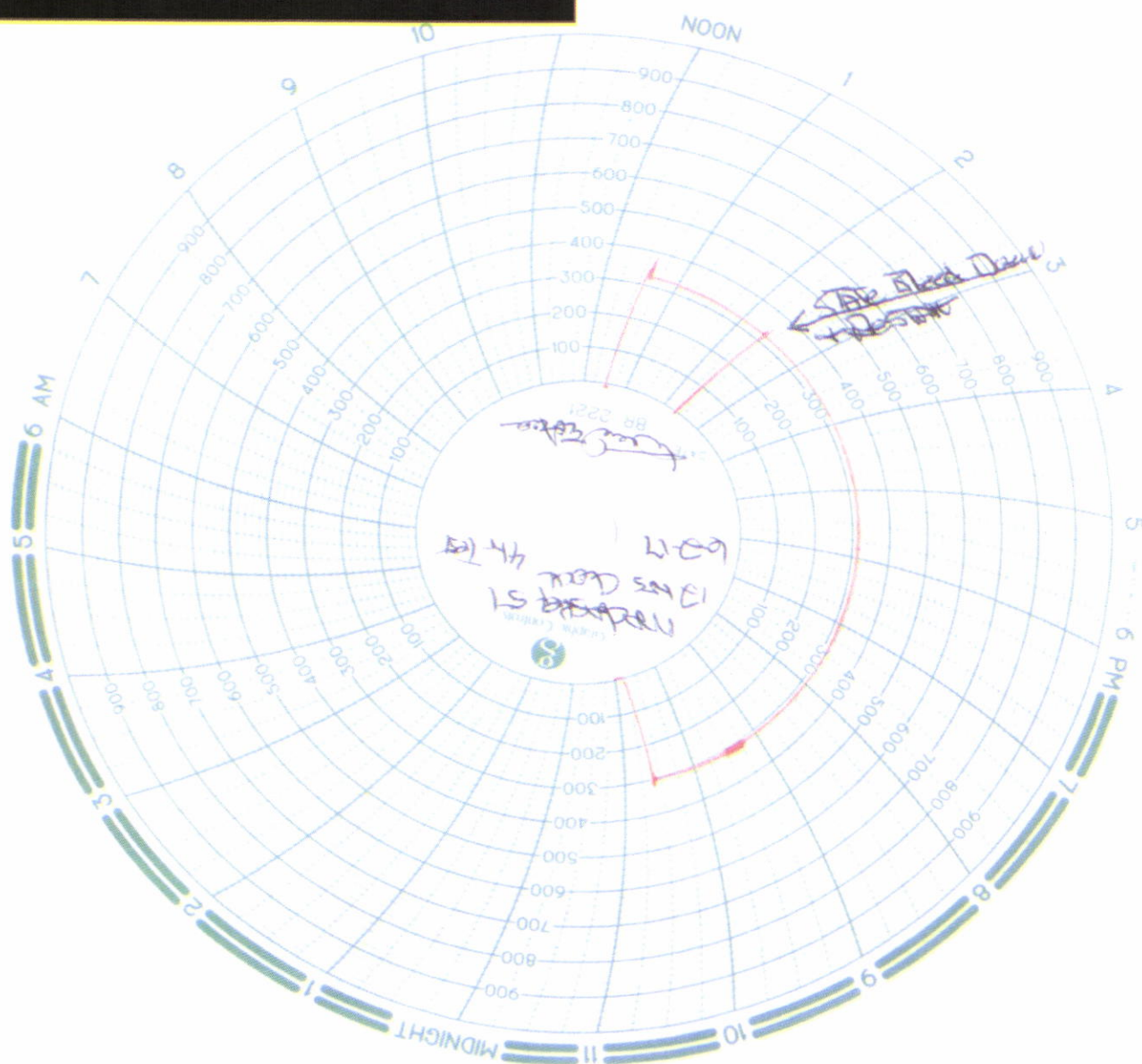
Recorder was removed and well was bled back to tanks. Nipple up connections and placed well back into operation producing brine at 230-240 psi. Please find the subsequent report C-103 and the Chart below for your viewing.

Next formation integrity test will be scheduled in February of 2022 H.R.C., Inc. will notify Santa Fe and Hobbs District Office to set up a time and date of the BW-36 Formation MIT.

Please find a copy of the MIT Chart on page 15 on page 16, 17 the C-103 Subsequent Report.

H.R.C., Inc.

MIT BW-36 CHART 6-2-17



H.R.C., Inc.

Submit Copy To Appropriate District Office
 District I - (505) 334-0161
 1625 N. French Dr. Hobbs, NM 88240
 District II - (505) 248-1283
 1415 N. First St., Artesia, NM 88203
 District III - (505) 344-0178
 1000 Rio Hondo Rd., Aztec, NM 87410
 District IV - (505) 476-1460
 1220 S. St. Francis Dr., Santa Fe, NM 87505

State of New Mexico
 Energy, Minerals and Natural Resources

OIL CONSERVATION DIVISION
 1220 South St. Francis Dr.
 Santa Fe, NM 87505

Form C-103
 Revised July 18, 2013

SUNDRY NOTICES AND REPORTS ON WELLS
 EXAMINE THIS FORM FOR INSTRUCTIONS TO DRILLER REGARDING
 DOWNHOLE RESERVOIR USE. ATTACH TO THIS FORM A COPY OF THE
 INFORMATION.

1. Type of Well: Oil Well ☐ Gas Well ☐ Other ☒
 2. Name of Operator
 H.R.C., Inc.
 3. Address of Operator
 P.O. Box 5102, Hobbs, NM 88240
 4. Well Location

Unit Letter B Section 28 feet from the Township 19S Range 38E

11. Elevation (Show whether DR, R&B, RI, GR, etc.)
 3525

WELL API NO.

50-025-37548

5. Indicate Type of Lease

STATE ☐ FEDERAL ☒

6. State Oil & Gas Lease No.

N/A

7. Lease Name or Unit Agreement Name

SCHUBERT FARM

8. Well Number (001)

9. OGRID Number

131652

10. Pool name or Wildcat

Salado

(96173)

12. Check Appropriate Box to Indicate Nature of Notice, Report or Other Data

NOTICE OF INTENTION TO

PERFORM REMEDIAL WORK ☐ PLUG AND ABANDON ☐
 TEMPORARILY ABANDON ☐ CHANGE PLANS ☐
 PULL OR ALTER CASING ☐ MULTIPLE COMPLET ☐
 DOWNHOLE COMMINGLE ☐
 CLOSED-LOOP SYSTEM ☐
 OTHER ☐

SUBSEQUENT REPORT OF

REMEDIAL WORK ☐ ALTERING CASING ☐
 COMMENCE DRILLING OPNS ☐ P AND A ☐
 CASING/CEMENT JOB ☐

OTHER WORKOVER TO CONVERT TO BRINE WELL ☒

13. Describe proposed or completed operations. Clearly state all pertinent details, and give pertinent dates, including estimated date of starting any proposed work. SEE RULE 19.15.7.14 NMAC. For Multiple completions, Attach wellbore diagram of proposed completion or recompletion.

*****SEE ATTACHED WORKOVER PROCEDURE COMPLETION REPORT

Spud Date:

Rig Release Date:

I hereby certify that the information above is true and complete to the best of my knowledge and belief.

SIGNATURE

TITLE

OWNER/PRES

DATE

11/14/17

Type or print name

EMERY M. SCHUBERT

E-mail address

EMERY.SCHUBERT@CNMATE.COM

PHONE

505 393 2222

For State Use Only

APPROVED BY

Michael Schubert

TITLE

PES

DATE

11/15/17

Conditions of Approval (if any)

H.R.C., Inc.

Feb 9, 2017

Rig up Capitan Wireline and set CIBP @ 2667'; above previous CIBP and cement plug that was set @ 2750' on June 21, 2016. (CIBP above top of cement was required to set whip stock by Baker Hughes).

Feb. 20, 2017

Rig up Lucky Services and Baker Hughes reverse unit
Set BOP; run in hole with 2 7/8" tubing and csg. scraper, circulate; tag CIBP @ 2660'.
Run in hole with whipstock and set. lay down 2 joints
SDIN.

Feb. 21, 2017

Rig up swivel; mill csg. from 2651 to 2661", come out of hole and rig up with bit assembly.
POOH with mill, lay down, make up bit assy.
Run in hole begin drill into salt, drill from 2661' to 2715
Rig down swivel and pull up into csg.
SDIN

Feb 22, 2017

RH tag @ 2703; wash to 2715, circulate; space out tbgs. with sub
Set bottom of tbgs./ bit assembly @ 2680'
Rig down swivel and pulling unit
Install well head
Hook up reverse unit.
Circulate and pressure to 275 psi
SDIN

Feb. 23, 2017

Pressure to 300 psi; make chart;
Circulate 5 hours at 150 to 200 psi;
Water turns salty. Rig down reverse unit;
Shut well in
Begin installing surface equipment

April 17, 2017

Begin injecting water to produce brine water.

H.R.C., Inc.

H.R.C., Inc. has updated the 2020 AOR for the Schubert Farms Well # 1 (BW-36) showing no new permits have been plotted on the NM OCD GIS program in the half mile AOR. H.R.C., Inc. will give notice to the Department if any future staking transpires within the AOR.

Please, find on page 19 the half mile AOR review map showing no new permits nor has there been any new wells drilled at this point.

Please find on page 20 the two mile 2020 AOR review showing the same three APD permits as in 2019. Apache Corp. has three APDs as depicted in the two mile AOR H.R.C., Inc. has placed the information below for your viewing and will give notice to the Department if any future staking transpires within the 2 mile AOR.

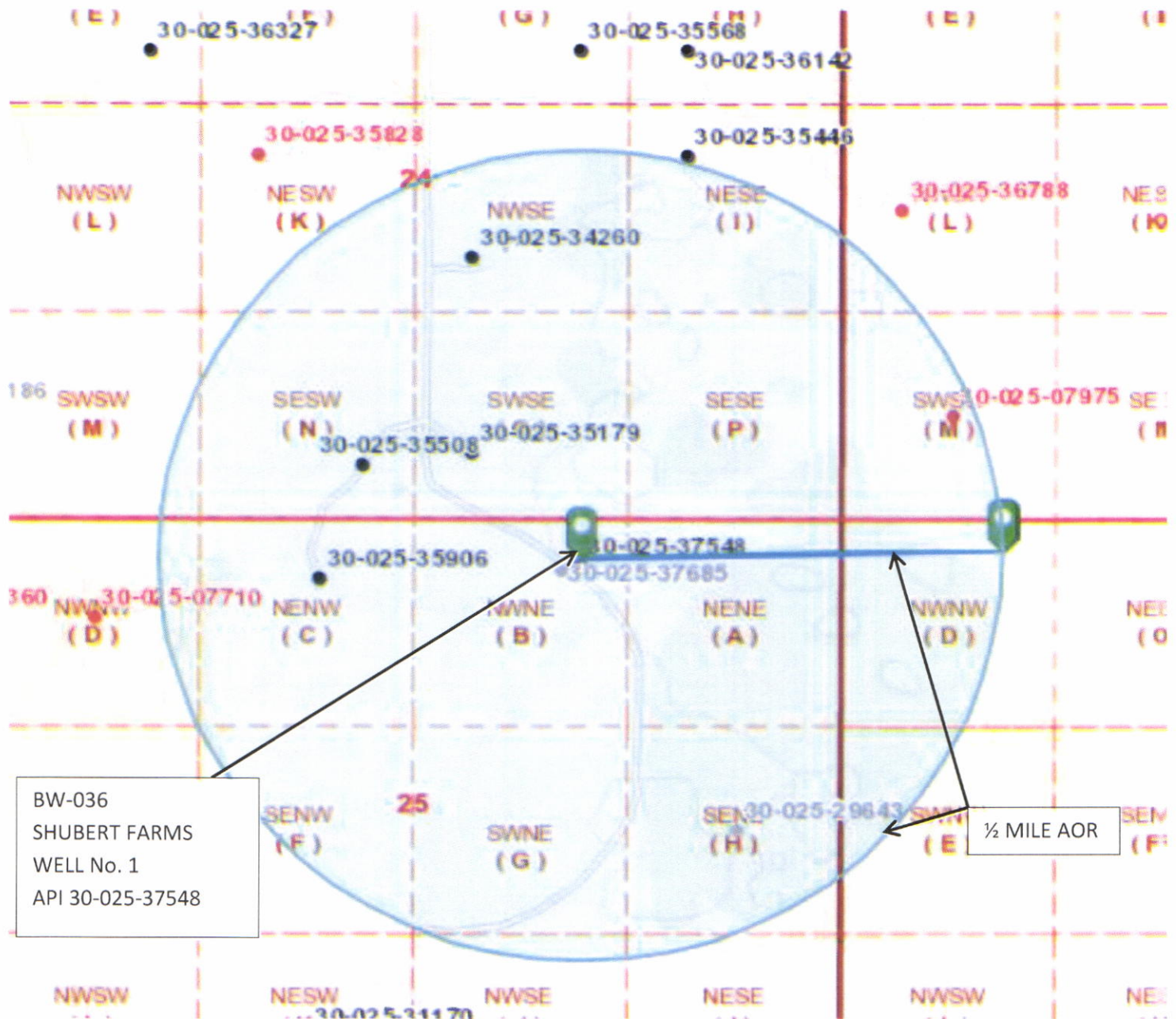
New Permits to Drill in Two Mile AOR

30-025-42532	Werta Federal # 006	Apache Corp.	I-35-19S- 38E	32.61576	-103.11174	Oil House Drinker
30-025-42530	Plow Boy Federal # 002	Apache Corp.	J-35-19S- 38E	32.61394	-103-11716	Oil House Blinebry
30-025-42531	Werta Federal # 005	Apache Corp.	P-35-19S- 38E	32.61213	-103.11175	Oil House Blinebry

H.R.C., Inc.

HALF MILE AOR SCHUBERT FARMS WELL # 1 (BW-36)

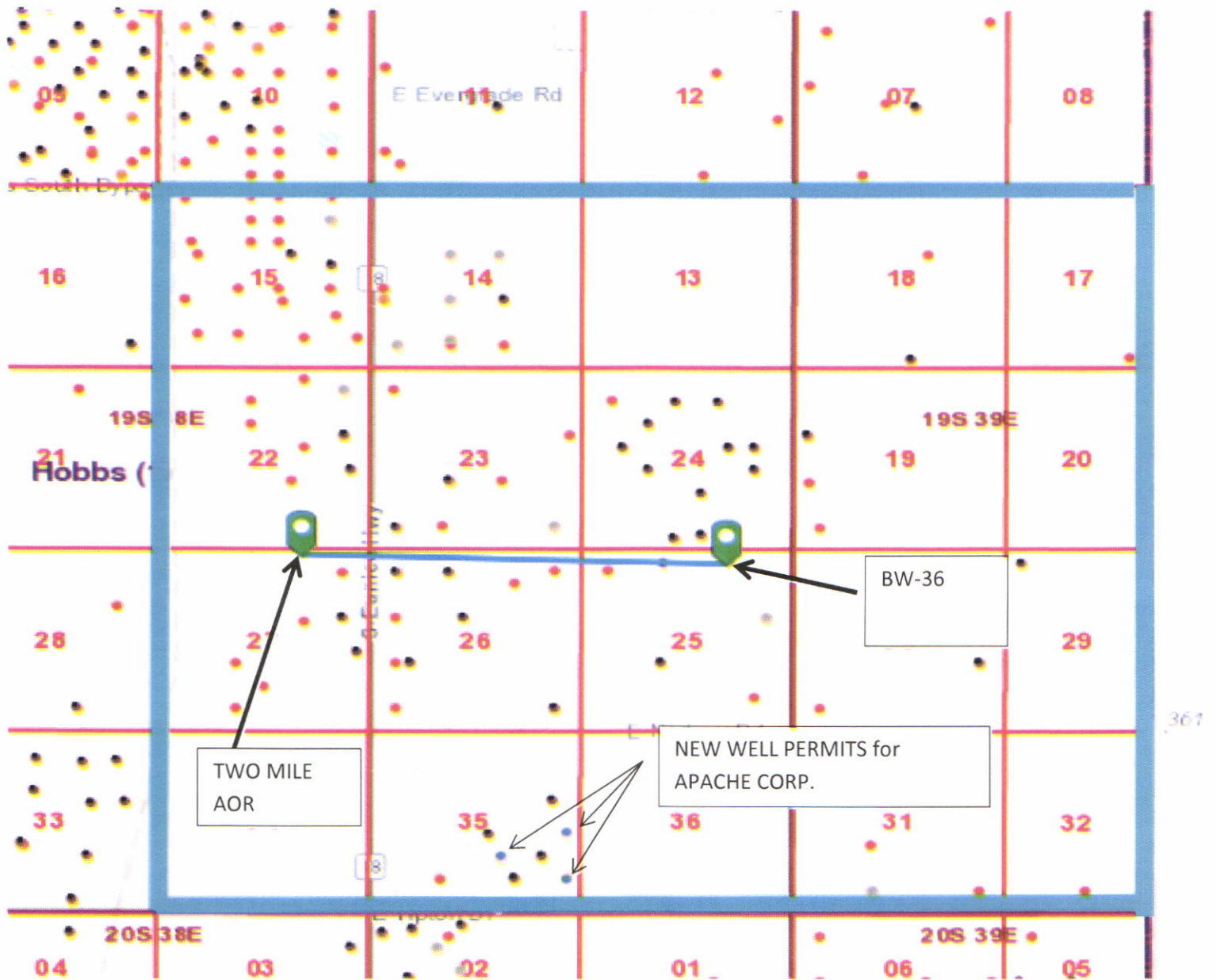
2020



H.R.C., Inc.

TWO MILE AOR SCHUBERT FARMS WELL # 1 (BW-36)

2020



H.R.C., Inc.

MITs, SURFACE SUBSIDENCE SURVEYS, CAVERN SIZE AND SHAPE AND VOLUME

Please see page 15 through page 17 for last MIT conducted and C-103 Subsequent Report on 6-2-17 held 300 psi and passed with OCD witnesses.

Surface Subsidence Surveys were conducted by Basin Surveys certified by Gary L. Jones. Three Elevation markers are in place. Please find below where the EM markers are located for BW-36.

NEW MEXICO STATE PLANE COORDINATES (NAD83)

WELL	NORTHING	EASTING	LATITUDE	LONGITUDE	ELEVATION
EM-1	597952.32	921529.98	32°38'15.88"	103°05'53.79"	3581.27
EM-2	597849.72	921532.48	32°38'14.86"	103°05'53.77"	3581.58
EM-3	598024.36	921313.69	32°38'16.62"	103°05'56.30"	3582.37

Three Surveys were conducted by Basin Surveys during the 2020 period with the description stating there were no changes in elevations that had occurred also one survey that was conducted in January 2020 that was reported in the 2019 report. H.R.C., Inc. has depicted the 2020 reports of the surveys for your review in the table below. Please find the plats of the Surveys at the end of this report for your viewing.

REVISION #	DATE	DESCRIPTION
6	January 15, 2019	Resurvey-No Change in Elevations
7	May 7, 2019	Resurvey-No Change in Elevations
8	October 14, 2019	Resurvey-No Change in Elevations
9	January 31, 2020	Resurvey-No Change in Elevations
10	May 12, 2020	Resurvey-No Change in Elevations
11	September 9, 2020	Resurvey-No Change in Elevations

H.R.C., Inc.

Cavern Characterization

BW-36 has extracted an estimated total of 1,445,579 ft.³ of Halite from the Salado formation from March, 2017 to December 31, 2020. This calculates to 115,646,304 lbs. of Halite that has produced 946,865 Bbl. of brine within this period stated above.

The Litho Density Compensated Neutron log shown on page 23 has approximately 51' of good Halite net pay showing less than 4 API units on the Gama Ray side of the log that is presently being mined. This interval is from 2661'-2715'

Without a true means of running a log that would allow us to see a true picture behind the anhydrite rock would be questionable. The characterization of the cavern can be mathematically calculated using $V = \pi R^2 h / 3$ where $[V = (3.14159 * 159.8858^2) * (54') / 3]$

$V = 1,445,578.89$ ft.³ of Halite has been extracted to date respectively. This amount of volume calculated correlates with the total of brine produced from 2017 through December 31, 2020 of 946,865 Bbl.

It takes 122.136 Lbs. of salt to produce one barrel of quality brine yielding a Specific Gravity of 1.1959. Multiplying salt ratio to total fluid bbl. total of 946,865 (extracted fluid bbl.) equals 115,646,304 Lbs. of salt mined from 2017 to the end of December 31, 2020.

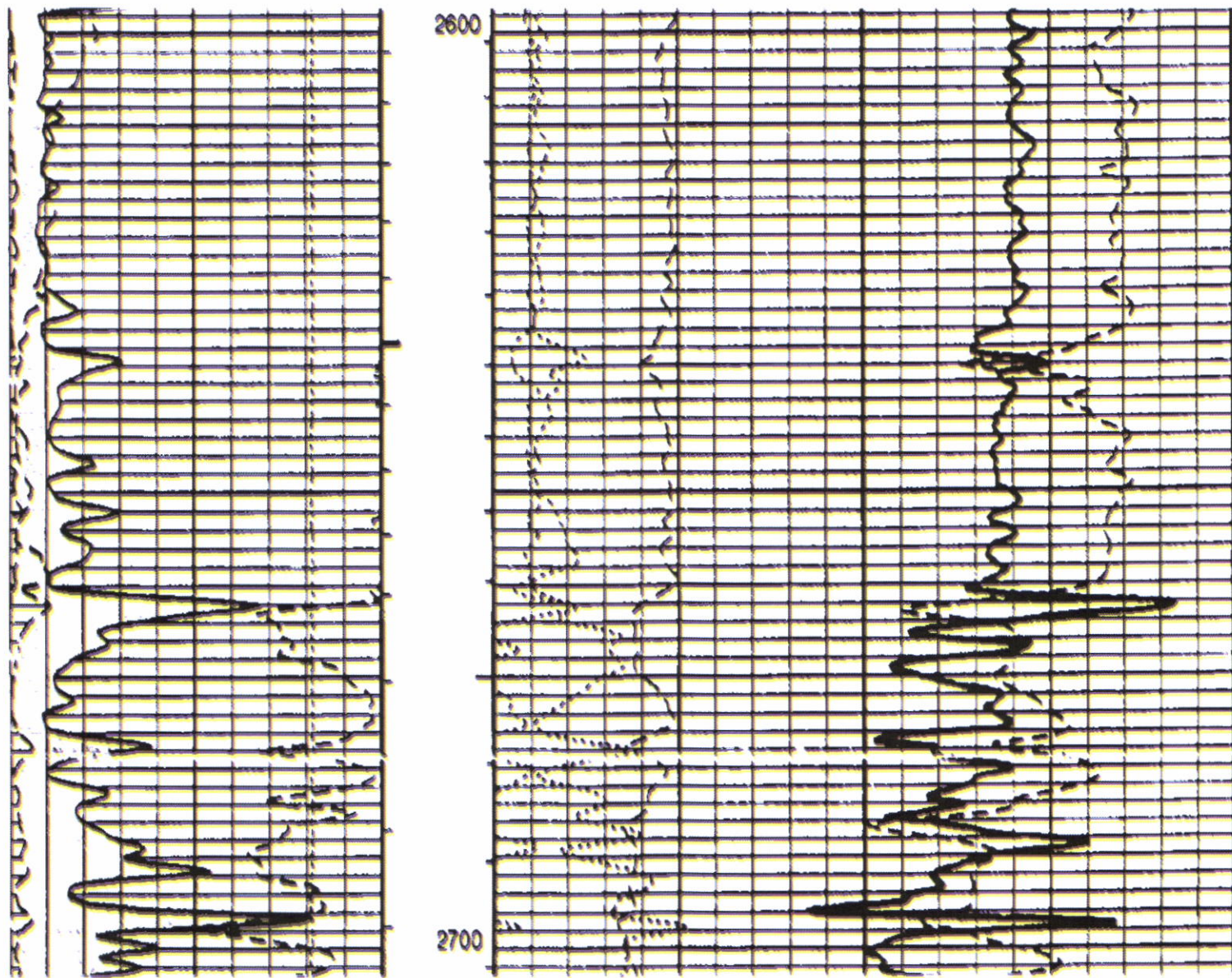
Taking the amount of Halite mined of 115,646,304 Lbs. and dividing the amount by 80 (Lbs. salt per ft.³) will equal 1,445,579 ft.³. In respect to the cavern safety factor of 0.45 % the Schubert Farms Well No. 1 (BW-36) has a factor value of $(319.77' W / 955' H) = 0.3348$ well below the States warning factor. New horizons above 2661' will yield greater opportunities.

BW-36 has a lot of life to continue mining for Halite that is used throughout our needs for the oil industry in Southeastern New Mexico.

H.R.C., Inc.

SCHUBERT FARMS WELL # 001 LITHO DENSITY COMPENSATED NEUTRON LOG

WINDOW @ 2661' TD OH 2715'



H.R.C., Inc.

SUMMARY RATIO EXTRACTION VS. INJECTION**2020 FLUID INJECTION & BRINE PRODUCTION VOLUME RATIO %**

MONTH	BRINE	PSI	FRESH WATER	PSI	RATIO	RATIO %
JANUARY	23319	230-240	23098	20	23319:23098	1.009568
FEBRUARY	13446	230-240	13282	20	6723:6641	1.012348
MARCH	22734	230-240	22517	20	22734:22517	1.009637
APRIL	13047	230-240	12869	20	13047:12869	1.013832
MAY	13526	230-240	13321	20	13526:13321	1.015389
JUNE	5901	230-240	5840	20	5901:5840	1.010445
JULY	12314	230-240	12126	20	131:129	1.015504
AUGUST	21698	230-240	21474	20	10849:10737	1.010431
SEPTEMBER	20148	230-240	19995	20	6716:6665	1.007652
OCTOBER	21239	230-240	21031	20	21239:21031	1.00989
NOVEMBER	27587	230-240	27321	20	3941:3903	1.009736
DECEMBER	28666	230-240	28373	20	28666:28373	1.010327

MAJOR FACILITY ACTIVITY OR EVENTS

No major activities or events have taken place during 2020 on location.

H.R.C., Inc.

CAVERN CHARACTERIZATION DATA RESULTS.

Please refer to page 22 and page 23 for data results.

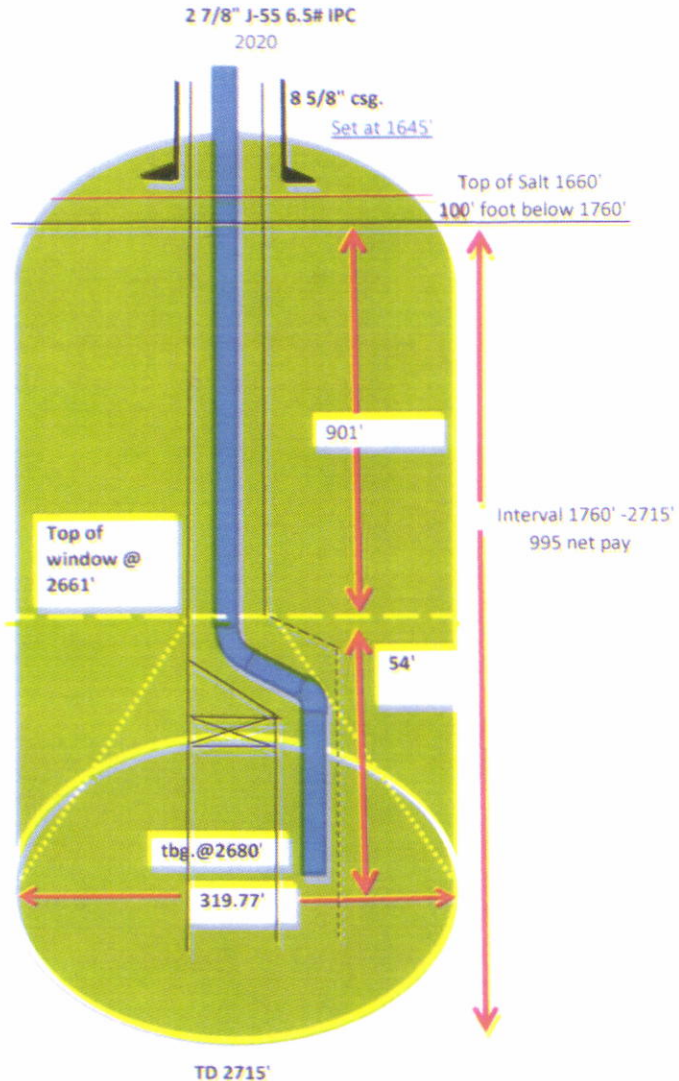
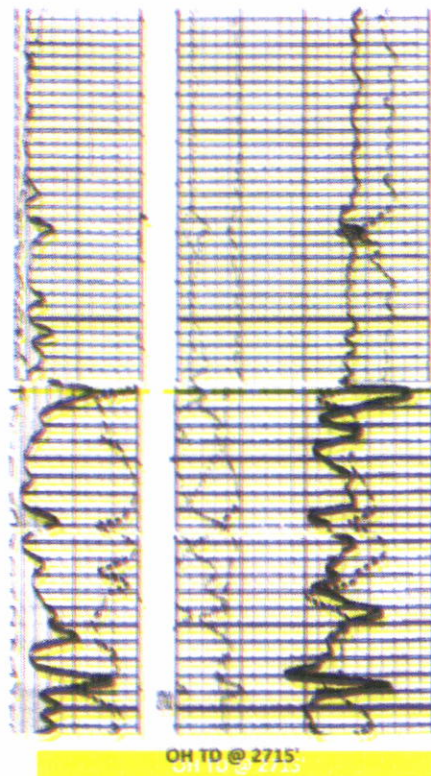
On Page 26; please find the characterization of the Schubert Farms Well No. 1 (BW-36)

We have attached a copy for your viewing at the end of this yearly report.

H.R.C., Inc.

Schubert Farms Well No1
 API 30-025-37548
 B SEC 25 T19S R38E
 LAT: 32.6375999 LONG:-103.0988007

CAVERN SIZE BY CUBIC FOOT OF VOLUME



PPG 9.97 brine
 PPG 8.34 fresh
 SG 1.1951

2017 thru Dec. 2020 Total Brine bbl. 946,865
 122.136 LBS / BBL = 115,646,304 LBS HALITE
 (115,646,304 LBS) / (80BLS per ft³) = 1,445,579 ft³

$$V = \frac{\pi R^2 h}{3}$$

$$V = (3.14159 * 159.8858^2) * (54') / 3$$

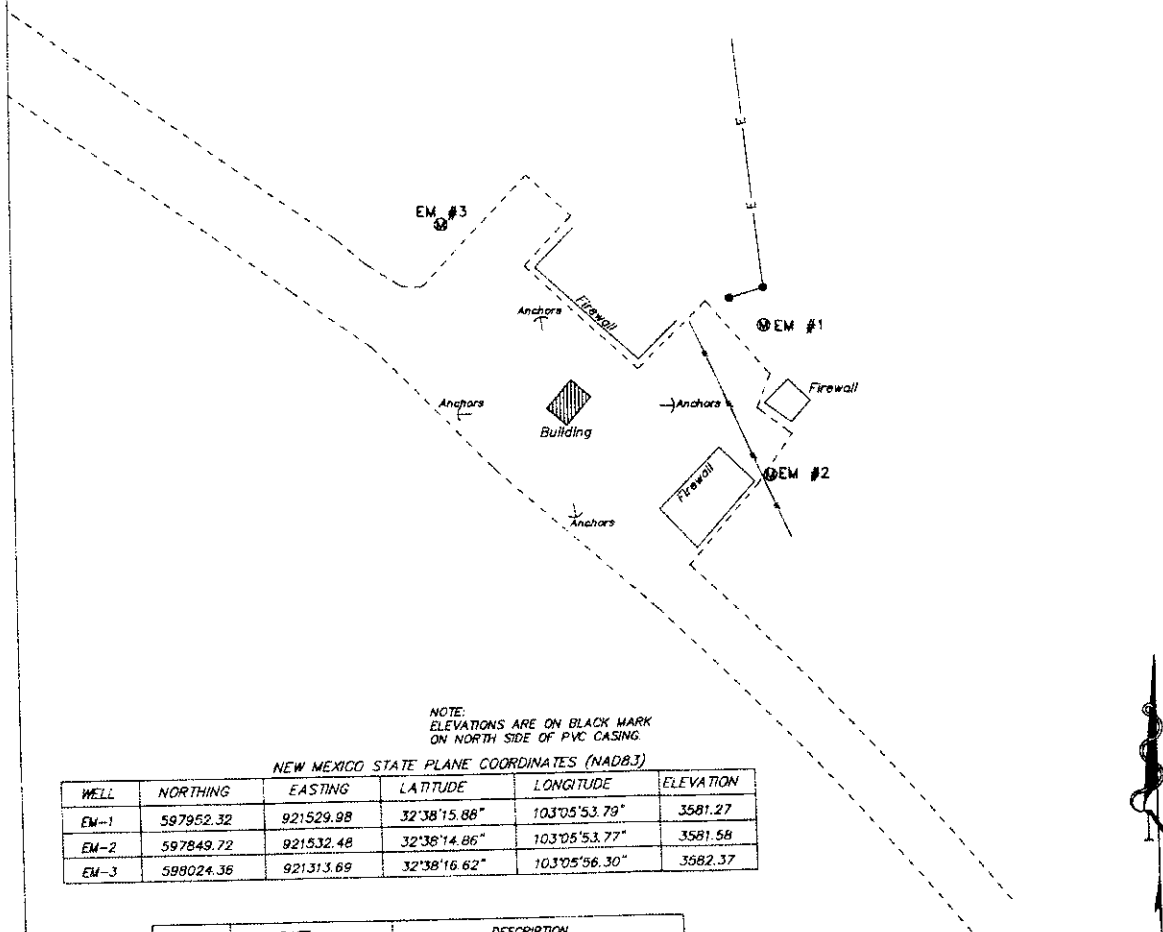
$$V = 1,445,578.89 \text{ ft}^3$$

Est. height is 54'
 Est. cavern floor diameter is 319.77'
 Cavern Ratio 319.77' / 955 = 0.3348 Factor

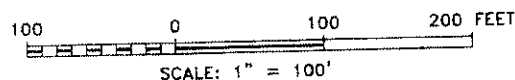
Schubert Farms Well No. 1**Year 2020**

MONTH	BRINE PRODUCTION (BY Meter)	FRESH WATER INJECTED (By Meter)
January	23,319	23,098
February	13,446	13,282
March	22,734	22,517
April	13,047	12,869
May	13,526	13,321
June	5,901	5,840
July	12,314	12,126
August	21,698	21,474
September	20,148	19,995
October	21,239	21,031
November	27,587	27,321
December	28,666	28,373

**SECTION 25, TOWNSHIP 19 SOUTH, RANGE 38 EAST, N.M.P.M.,
LEA COUNTY, NEW MEXICO.**

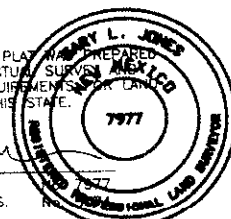


REVISION #	DATE	DESCRIPTION
1	MAY 11, 2017	ORIGINAL SURVEY
2	AUGUST 30, 2017	RESURVEY-NO CHANGE IN ELEVATIONS
3	JANUARY 10, 2018	RESURVEY-NO CHANGE IN ELEVATIONS
4	MAY 1, 2018	RESURVEY-NO CHANGE IN ELEVATIONS
5	SEPTEMBER 5, 2018	RESURVEY-NO CHANGE IN ELEVATIONS
6	JANUARY 15, 2019	RESURVEY-NO CHANGE IN ELEVATIONS
7	MAY 7, 2019	RESURVEY-NO CHANGE IN ELEVATIONS
8	OCTOBER 14, 2019	RESURVEY-NO CHANGE IN ELEVATIONS
9	JANUARY 31, 2020	RESURVEY-NO CHANGE IN ELEVATIONS
10	MAY 12, 2020	RESURVEY-NO CHANGE IN ELEVATIONS
11	SEPTEMBER 9, 2020	RESURVEY-NO CHANGE IN ELEVATIONS



I HEREBY CERTIFY THAT THIS PLAN WAS PREPARED
FROM FIELD NOTES OF AN ACTUAL SURVEY
MEETS OR EXCEEDS ALL REQUIREMENTS OF THE
SURVEYS AS SPECIFIED BY THIS STATE.

GARY L. JONES N.M. P.S.
TEXAS P.L.S.



BASIN SURVEYS P.O. BOX 1786-HOBBS, NEW MEXICO

W.O. Number: 35186

Drawn By: K. GOAD

Date: 09-09-2020

Disk: KJG - SCHUBERT FARMS 35186

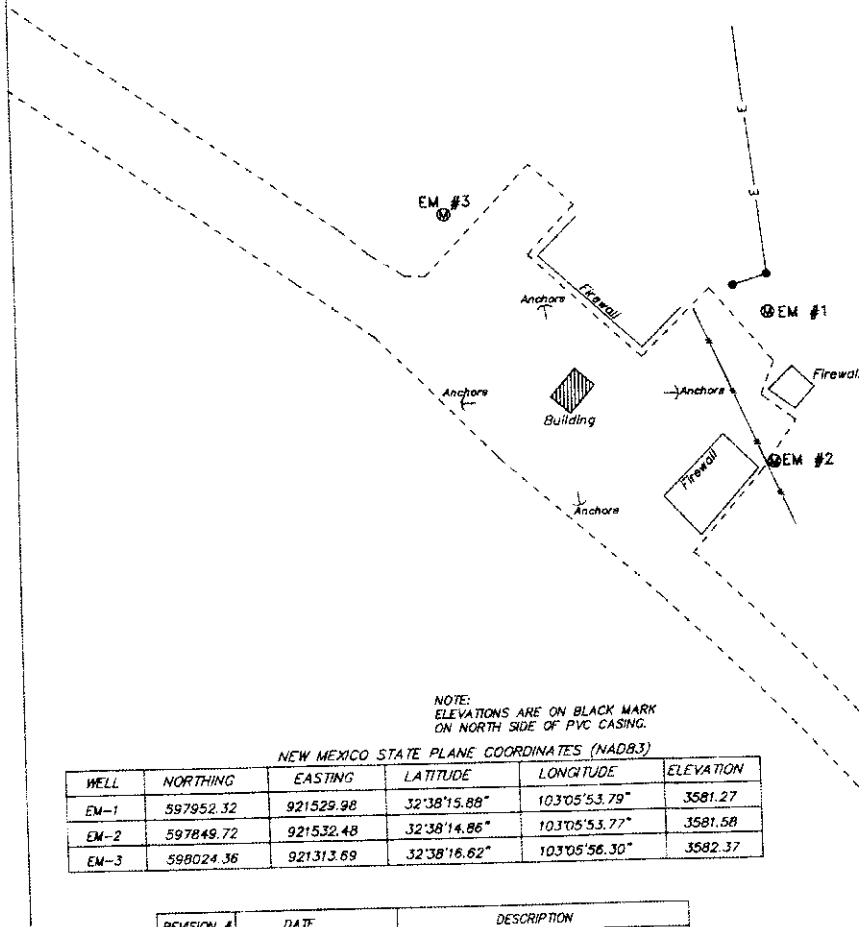
H.R.C. INC.

REF: ELEVATION MARKERS

ELEVATION MARKERS LOCATED IN
SECTION 25, TOWNSHIP 19 SOUTH, RANGE 38 EAST,
N.M.P.M., LEA COUNTY, NEW MEXICO.

Survey Date: 09-09-2020 Sheet 1 of 1 Sheets

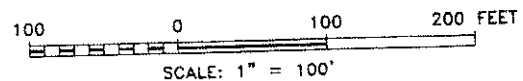
**SECTION 25, TOWNSHIP 19 SOUTH, RANGE 38 EAST, N.M.P.M.,
LEA COUNTY, NEW MEXICO.**



NEW MEXICO STATE PLANE COORDINATES (NAD83)

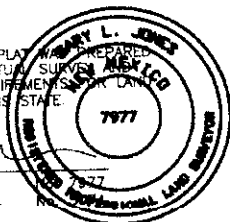
WELL	NORTHING	EASTING	LATITUDE	LONGITUDE	ELEVATION
EM-1	597952.32	921529.98	32°38'15.88"	103°05'53.79"	3581.27
EM-2	597849.72	921532.48	32°38'14.86"	103°05'53.77"	3581.58
EM-3	598024.36	921313.69	32°38'16.62"	103°05'56.30"	3582.37

REVISION #	DATE	DESCRIPTION
1	MAY 11, 2017	ORIGINAL SURVEY
2	AUGUST 30, 2017	RESURVEY-NO CHANGE IN ELEVATIONS
3	JANUARY 10, 2018	RESURVEY-NO CHANGE IN ELEVATIONS
4	MAY 1, 2018	RESURVEY-NO CHANGE IN ELEVATIONS
5	SEPTEMBER 5, 2018	RESURVEY-NO CHANGE IN ELEVATIONS
6	JANUARY 15, 2019	RESURVEY-NO CHANGE IN ELEVATIONS
7	MAY 7, 2019	RESURVEY-NO CHANGE IN ELEVATIONS
8	OCTOBER 14, 2019	RESURVEY-NO CHANGE IN ELEVATIONS
9	JANUARY 31, 2020	RESURVEY-NO CHANGE IN ELEVATIONS
10	MAY 12, 2020	RESURVEY-NO CHANGE IN ELEVATIONS



I HEREBY CERTIFY THAT THIS PLAN WAS PREPARED
FROM FIELD NOTES OF AN ACTUAL SURVEY
MEETS OR EXCEEDS ALL REQUIREMENTS FOR LAND
SURVEYS AS SPECIFIED BY THIS STATE.

GARY L. JONES N.M. P.S.
TEXAS P.L.S.



Basin Surveys P.O. BOX 1786-HOBBS, NEW MEXICO

W.O. Number: 35103

Drawn By: K. GOAD

Date: 05-12-2020

Disk: KJG - SCHUBERT FARMS 35103

REF: ELEVATION MARKERS

H.R.C. INC.

ELEVATION MARKERS LOCATED IN
SECTION 25, TOWNSHIP 19 SOUTH, RANGE 38 EAST,
N.M.P.M., LEA COUNTY, NEW MEXICO.

Survey Date: 05-12-2020 Sheet 1 of 1 Sheets



PHONE (575) 393-2326 • 101 E. MARLAND • HOBBS, NM 88240

June 15, 2020

BEN DONAHUE

ETZ WATER STATION

PO BOX 6056

HOBBS, NM 88241

RE: SCHUBERT

Enclosed are the results of analyses for samples received by the laboratory on 06/04/20 10:25.

Cardinal Laboratories is accredited through Texas NELAP under certificate number T104704398-20-13. Accreditation applies to drinking water, non-potable water and solid and chemical materials. All accredited analytes are denoted by an asterisk (*). For a complete list of accredited analytes and matrices visit the TCEQ website at www.tceq.texas.gov/field/ga/lab_accred_certif.html.

Cardinal Laboratories is accredited through the State of Colorado Department of Public Health and Environment for:

Method EPA 552.2	Total Haloacetic Acids (HAA-5)
Method EPA 524.2	Total Trihalomethanes (TTHM)
Method EPA 524.4	Regulated VOCs (V1, V2, V3)

Cardinal Laboratories is accredited through the State of New Mexico Environment Department for:

Method SM 9223-B	Total Coliform and E. coli (Colilert MMO-MUG)
Method EPA 524.2	Regulated VOCs and Total Trihalomethanes (TTHM)
Method EPA 552.2	Total Haloacetic Acids (HAA-5)

Accreditation applies to public drinking water matrices for State of Colorado and New Mexico.

This report meets NELAP requirements and is made up of a cover page, analytical results, and a copy of the original chain-of-custody. If you have any questions concerning this report, please feel free to contact me.

Sincerely,

A handwritten signature in black ink, appearing to read "Celey D. Keene". The signature is fluid and cursive, with a long horizontal stroke at the end.

Celey D. Keene

Lab Director/Quality Manager



PHONE (575) 393-2326 • 101 E. MARLAND • HOBBS, NM 88240

Analytical Results For:ETZ WATER STATION
PO BOX 6056
HOBBS NM, 88241Project: SCHUBERT
Project Number: SCHUBERT FARMS # 1 WATER SA
Project Manager: BEN DONAHUE
Fax To:Reported:
15-Jun-20 15:03

Sample ID	Laboratory ID	Matrix	Date Sampled	Date Received
BRINE WATER	H001512-01	Water	03-Jun-20 15:48	04-Jun-20 10:25
FRESH WATER	H001512-02	Water	03-Jun-20 15:50	04-Jun-20 10:25
MONITOR WELL	H001512-03	Water	03-Jun-20 15:45	04-Jun-20 10:25

Cardinal Laboratories

*=Accredited Analyte

PLEASE NOTE: Liability and Damages. Cardinal's liability and client's exclusive remedy for any claim arising, whether based in contract or tort, shall be limited to the amount paid by client for analyses. All claims, including those for negligence or any other cause whatsoever shall be deemed waived unless made in writing and received by Cardinal within thirty (30) days after completion of the applicable service. In no event shall Cardinal be liable for incidental or consequential damage including, without limitation, business interruptions, loss of use, or loss of profits incurred by client, its subsidiaries, affiliates or successors arising out of or related to the performance of the services hereunder by Cardinal, regardless of whether such claim is based upon any of the above stated reasons or otherwise. Results relate only to the samples identified above. This report shall not be reproduced except in full with written approval of Cardinal Laboratories.

Celey D. Keene, Lab Director/Quality Manager



PHONE (575) 393-2326 • 101 E. MARLAND • HOBBS, NM 88240

Analytical Results For:

ETZ WATER STATION
PO BOX 6056
HOBBS NM, 88241

Project: SCHUBERT
Project Number: SCHUBERT FARMS # 1 WATER SA
Project Manager: BEN DONAHUE
Fax To:

Reported:
15-Jun-20 15:03

BRINE WATER
H001512-01 (Water)

Analyte	Result	MDL	Reporting Limit	Units	Dilution	Batch	Analyst	Analyzed	Method	Notes
---------	--------	-----	-----------------	-------	----------	-------	---------	----------	--------	-------

Cardinal Laboratories**Inorganic Compounds**

Alkalinity, Bicarbonate	244		5.00	mg/L	1	0060508	AC	05-Jun-20	310.1	
Alkalinity, Carbonate	<1.00		1.00	mg/L	1	0060508	AC	05-Jun-20	310.1	
Chloride*	186000		4.00	mg/L	1	0052602	GM	05-Jun-20	4500-Cl-B	
Conductivity*	264000		1.00	uS/cm	1	0060503	AC	05-Jun-20	120.1	
pH*	6.95		0.100	pH Units	1	0060503	AC	05-Jun-20	150.1	
Sulfate*	2660		1250	mg/L	125	0061104	AC	11-Jun-20	375.4	
TDS*	294000		5.00	mg/L	1	0060211	GM	08-Jun-20	160.1	
Alkalinity, Total*	200		4.00	mg/L	1	0060508	AC	05-Jun-20	310.1	

Green Analytical Laboratories**Total Recoverable Metals by ICP (E200.7)**

Calcium*	681		50.0	mg/L	500	B200973	AES	10-Jun-20	EPA200.7	
Magnesium*	204		50.0	mg/L	500	B200973	AES	10-Jun-20	EPA200.7	
Potassium*	335	75.8	500	mg/L	500	B200973	AES	10-Jun-20	EPA200.7	J
Sodium*	107000		500	mg/L	500	B200973	AES	10-Jun-20	EPA200.7	

Cardinal Laboratories

*--Accredited Analyte

PLEASE NOTE: Liability and Damages. Cardinal's liability and client's exclusive remedy for any claim arising, whether based in contract or tort, shall be limited to the amount paid by client for analyses. All claims, including those for negligence in any other cause whatsoever shall be deemed waived unless made in writing and received by Cardinal within thirty (30) days after completion of the applicable service. In no event shall Cardinal be liable for incidental or consequential damage including, without limitation, business interruptions, loss of use, or loss of profits incurred by client, its subsidiaries, affiliates or successors arising out of or related to the performance of the services hereunder by Cardinal, regardless of whether such claim is based upon any of the above stated reasons or otherwise. Results relate only to the samples identified above. This report shall not be reproduced except in full with written approval of Cardinal Laboratories.

Celey D. Keene, Lab Director/Quality Manager



PHONE (575) 393-2326 • 101 E. MARLAND • HOBBS, NM 88240

Analytical Results For:

ETZ WATER STATION
PO BOX 6056
HOBBS NM, 88241

Project: SCHUBERT
Project Number: SCHUBERT FARMS # 1 WATER SA
Project Manager: BEN DONAHUE
Fax To:

Reported:
15-Jun-20 15:03

FRESH WATER**H001512-02 (Water)**

Analyte	Result	MDL	Reporting Limit	Units	Dilution	Batch	Analyst	Analyzed	Method	Notes
---------	--------	-----	-----------------	-------	----------	-------	---------	----------	--------	-------

Cardinal Laboratories**Inorganic Compounds**

Alkalinity, Bicarbonate	298		5.00	mg/L	1	0060508	AC	05-Jun-20	310.1	
Alkalinity, Carbonate	<1.00		1.00	mg/L	1	0060508	AC	05-Jun-20	310.1	
Chloride*	284		4.00	mg/L	1	0052602	GM	05-Jun-20	4500-Cl-B	
Conductivity*	1730		1.00	uS/cm	1	0060503	AC	05-Jun-20	120.1	
pH*	7.72		0.100	pH Units	1	0060503	AC	05-Jun-20	150.1	
Sulfate*	198		50.0	mg/L	5	0061104	AC	11-Jun-20	375.4	
TDS*	1070		5.00	mg/L	1	0060211	GM	08-Jun-20	160.1	
Alkalinity, Total*	244		4.00	mg/L	1	0060508	AC	05-Jun-20	310.1	

Green Analytical Laboratories**Total Recoverable Metals by ICP (E200.7)**

Calcium*	132		0.500	mg/L	5	B200973	AES	10-Jun-20	EPA200.7	
Magnesium*	31.6		0.500	mg/L	5	B200973	AES	10-Jun-20	EPA200.7	
Potassium*	14.7	0.758	5.00	mg/L	5	B200973	AES	10-Jun-20	EPA200.7	
Sodium*	162		5.00	mg/L	5	B200973	AES	10-Jun-20	EPA200.7	

Cardinal Laboratories

* = Accredited Analyte

PLEASE NOTE: Liability and Damages. Cardinal's liability and client's exclusive remedy for any claim arising, whether based in contract or tort, shall be limited to the amount paid by client for analyses. All claims, including those for negligence or any other cause whatsoever shall be deemed waived unless made in writing and received by Cardinal within thirty (30) days after completion of the applicable service. In no event shall Cardinal be liable for incidental or consequential damage including, without limitation, business interruptions, loss of use, or loss of profits incurred by client, its subsidiaries, affiliates or successors arising out of or related to the performance of the services hereunder by Cardinal, regardless of whether such claim is based upon any of the above stated reasons or otherwise. Results relate only to the samples identified above. This report shall not be reproduced except in full with written approval of Cardinal Laboratories.

Celey D. Keene, Lab Director/Quality Manager



PHONE (575) 393-2326 • 101 E. MARLAND • HOBBS, NM 88240

Analytical Results For:

ETZ WATER STATION
PO BOX 6056
HOBBS NM, 88241

Project: SCHUBERT
Project Number: SCHUBERT FARMS # 1 WATER SA
Project Manager: BEN DONAHUE
Fax To:

Reported:
15-Jun-20 15:03

MONITOR WELL**H001512-03 (Water)**

Analyte	Result	MDL	Reporting Limit	Units	Dilution	Batch	Analyst	Analyzed	Method	Notes
---------	--------	-----	-----------------	-------	----------	-------	---------	----------	--------	-------

Cardinal Laboratories**Inorganic Compounds**

Alkalinity, Bicarbonate	234		5.00	mg/L	1	0060508	AC	05-Jun-20	310.1	
Alkalinity, Carbonate	<1.00		1.00	mg/L	1	0060508	AC	05-Jun-20	310.1	
Chloride*	356		4.00	mg/L	1	0060502	GM	05-Jun-20	4500-Cl-B	
Conductivity*	1960		1.00	uS/cm	1	0060503	AC	05-Jun-20	120.1	
pH*	7.53		0.100	pH Units	1	0060503	AC	05-Jun-20	150.1	
Sulfate*	260		50.0	mg/L	5	0061104	AC	11-Jun-20	375.4	
TDS*	1170		5.00	mg/L	1	0060211	GM	08-Jun-20	160.1	
Alkalinity, Total*	192		4.00	mg/L	1	0060508	AC	05-Jun-20	310.1	

Green Analytical Laboratories**Total Recoverable Metals by ICP (E200.7)**

Calcium*	179		0.500	mg/L	5	B200973	AES	10-Jun-20	EPA200.7	
Magnesium*	51.5		0.500	mg/L	5	B200973	AES	10-Jun-20	EPA200.7	
Potassium*	5.39	0.758	5.00	mg/L	5	B200973	AES	10-Jun-20	EPA200.7	
Sodium*	126		5.00	mg/L	5	B200973	AES	10-Jun-20	EPA200.7	

Cardinal Laboratories

* = Accredited Analyte

PLEASE NOTE: Liability and Damages. Cardinal's liability and client's exclusive remedy for any claim arising, whether based in contract or tort, shall be limited to the amount paid by client for analyses. All claims, including those for negligence in any other cause whatsoever shall be deemed waived unless made in writing and received by Cardinal within thirty (30) days after completion of the applicable service. In no event shall Cardinal be liable for incidental or consequential damage including, without limitation, business interruptions, loss of use, or loss of profits incurred by client, its subsidiaries, affiliates or successors arising out of or related to the performance of the services hereunder by Cardinal, regardless of whether such claim is based upon any of the above stated reasons or otherwise. Results relate only to the samples identified above. This report shall not be reproduced except in full with written approval of Cardinal Laboratories.

Celey D. Keene, Lab Director/Quality Manager



PHONE (575) 393-2326 • 101 E. MARLAND • HOBBS, NM 88240

Analytical Results For:

ETZ WATER STATION
PO BOX 6056
HOBBS NM, 88241

Project: SCHUBERT
Project Number: SCHUBERT FARMS # 1 WATER SA
Project Manager: BEN DONAHUE
Fax To:

Reported:
15-Jun-20 15:03

Inorganic Compounds - Quality Control**Cardinal Laboratories**

Analyte	Result	Reporting Limit	Units	Spike Level	Source Result	%REC	%REC Limits	RPD	RPD Limit	Notes
---------	--------	-----------------	-------	-------------	---------------	------	-------------	-----	-----------	-------

Batch 0052602 - General Prep - Wet Chem**Blank (0052602-BLK1)**

Prepared & Analyzed: 26-May-20

Chloride	ND	4.00	mg/L							
----------	----	------	------	--	--	--	--	--	--	--

LCS (0052602-BS1)

Prepared & Analyzed: 26-May-20

Chloride	104	4.00	mg/L	100	104	80-120				
----------	-----	------	------	-----	-----	--------	--	--	--	--

LCS Dup (0052602-BSD1)

Prepared & Analyzed: 26-May-20

Chloride	104	4.00	mg/L	100	104	80-120	0.00	20		
----------	-----	------	------	-----	-----	--------	------	----	--	--

Batch 0060211 - Filtration**Blank (0060211-BLK1)**

Prepared: 02-Jun-20 Analyzed: 03-Jun-20

TDS	ND	5.00	mg/L							
-----	----	------	------	--	--	--	--	--	--	--

LCS (0060211-BS1)

Prepared: 02-Jun-20 Analyzed: 03-Jun-20

TDS	523		mg/L	500	105	80-120				
-----	-----	--	------	-----	-----	--------	--	--	--	--

Duplicate (0060211-DUP1)

Source: H001477-02

Prepared: 02-Jun-20 Analyzed: 03-Jun-20

TDS	721	5.00	mg/L		724		0.415	20		
-----	-----	------	------	--	-----	--	-------	----	--	--

Batch 0060502 - General Prep - Wet Chem**Blank (0060502-BLK1)**

Prepared & Analyzed: 05-Jun-20

Chloride	ND	4.00	mg/L							
----------	----	------	------	--	--	--	--	--	--	--

LCS (0060502-BS1)

Prepared & Analyzed: 05-Jun-20

Chloride	100	4.00	mg/L	100	100	80-120				
----------	-----	------	------	-----	-----	--------	--	--	--	--

Cardinal Laboratories

* = Accredited Analyte

PLEASE NOTE: Liability and Damages. Cardinal's liability and client's exclusive remedy for any claim arising, whether based in contract or tort, shall be limited to the amount paid by client for analyses. All claims, including those for negligence or any other cause whatsoever shall be deemed waived unless made in writing and received by Cardinal within thirty (30) days after completion of the applicable service. In no event shall Cardinal be liable for incidental or consequential damage including, without limitation, business interruptions, loss of use, or loss of profits incurred by client, its subsidiaries, affiliates or successors arising out of or related to the performance of the services hereunder by Cardinal, regardless of whether such claim is based upon any of the above stated reasons or otherwise. Results relate only to the samples identified above. This report shall not be reproduced except in full with written approval of Cardinal Laboratories.

Celey D. Keene, Lab Director/Quality Manager



PHONE (575) 393-2326 • 101 E. MARLAND • HOBBS, NM 88240

Analytical Results For:
 ETZ WATER STATION
 PO BOX 6056
 HOBBS NM, 88241

 Project: SCHUBERT
 Project Number: SCHUBERT FARMS # 1 WATER SA
 Project Manager: BEN DONAHUE
 Fax To:

 Reported:
 15-Jun-20 15:03
Inorganic Compounds - Quality Control**Cardinal Laboratories**

Analyte	Result	Reporting Limit	Units	Spike Level	Source Result	%REC	%REC Limits	RPD	RPD Limit	Notes
---------	--------	--------------------	-------	----------------	------------------	------	----------------	-----	--------------	-------

Batch 0060502 - General Prep - Wet Chem**LCS Dup (0060502-BSD1)**

Prepared & Analyzed: 05-Jun-20

Chloride	104	4.00	mg/L	100		104	80-120	3.92	20	
----------	-----	------	------	-----	--	-----	--------	------	----	--

Batch 0060503 - General Prep - Wet Chem**LCS (0060503-BS1)**

Prepared & Analyzed: 05-Jun-20

pH	7.13		pH Units	7.00		102	90-110			
Conductivity	101000		uS/cm	100000		101	80-120			

Duplicate (0060503-DUP1)

Source: H001511-01

Prepared & Analyzed: 05-Jun-20

pH	7.02	0.100	pH Units		6.99			0.428	20	
Conductivity	275000	1.00	uS/cm		276000			0.218	20	

Batch 0060508 - General Prep - Wet Chem**Blank (0060508-BLK1)**

Prepared & Analyzed: 05-Jun-20

Alkalinity, Carbonate	ND	1.00	mg/L							
Alkalinity, Bicarbonate	5.00	5.00	mg/L							
Alkalinity, Total	4.00	4.00	mg/L							

LCS (0060508-BS1)

Prepared & Analyzed: 05-Jun-20

Alkalinity, Carbonate	ND	2.50	mg/L				80-120			
Alkalinity, Bicarbonate	305	12.5	mg/L				80-120			
Alkalinity, Total	250	10.0	mg/L	250		100	80-120			

LCS Dup (0060508-BSD1)

Prepared & Analyzed: 05-Jun-20

Alkalinity, Carbonate	ND	2.50	mg/L				80-120		20	
Alkalinity, Bicarbonate	305	12.5	mg/L				80-120	0.00	20	
Alkalinity, Total	250	10.0	mg/L	250		100	80-120	0.00	20	

Cardinal Laboratories

*=Accredited Analyte

PLEASE NOTE: Liability and Damages. Cardinal's liability and client's exclusive remedy for any claim arising, whether based in contract or tort, shall be limited to the amount paid by client for analyses. All claims, including those for negligence or any other cause whatsoever shall be deemed waived unless made in writing and received by Cardinal within thirty (30) days after completion of the applicable service. In no event shall Cardinal be liable for incidental or consequential damage including, without limitation, business interruptions, loss of use, or loss of profits incurred by client, its subsidiaries, affiliates or successors arising out of or related to the performance of the services hereunder by Cardinal, regardless of whether such claim is based upon any of the above stated reasons or otherwise. Results relate only to the samples identified above. This report shall not be reproduced except in full with written approval of Cardinal Laboratories.

Celey D. Keene, Lab Director/Quality Manager



PHONE (575) 393-2326 • 101 E. MARLAND • HOBBS, NM 88240

Analytical Results For:

ETZ WATER STATION
PO BOX 6056
HOBBS NM, 88241

Project: SCHUBERT
Project Number: SCHUBERT FARMS # 1 WATER SA
Project Manager: BEN DONAHUE
Fax To:

Reported:
15-Jun-20 15:03

Inorganic Compounds - Quality Control**Cardinal Laboratories**

Analyte	Result	Reporting Limit	Units	Spike Level	Source Result	%REC	%REC Limits	RPD	RPD Limit	Notes
---------	--------	--------------------	-------	----------------	------------------	------	----------------	-----	--------------	-------

Batch 0061104 - General Prep - Wet Chem**Blank (0061104-BLK1)**

Prepared & Analyzed: 11-Jun-20

Sulfate	ND	10.0	mg/L
---------	----	------	------

LCS (0061104-BS1)

Prepared & Analyzed: 11-Jun-20

Sulfate	20.0	10.0	mg/L	20.0	100	80-120
---------	------	------	------	------	-----	--------

LCS Dup (0061104-BSD1)

Prepared & Analyzed: 11-Jun-20

Sulfate	18.8	10.0	mg/L	20.0	94.0	80-120	6.34	20
---------	------	------	------	------	------	--------	------	----

Cardinal Laboratories

*=Accredited Analyte

PLEASE NOTE: Liability and Damages. Cardinal's liability and client's exclusive remedy for any claim arising, whether based in contract or tort, shall be limited to the amount paid by client for analyses. All claims, including those for negligence or any other cause whatsoever shall be deemed waived unless made in writing and received by Cardinal within thirty (30) days after completion of the applicable service. In no event shall Cardinal be liable for incidental or consequential damage including, without limitation, business interruptions, loss of use, or loss of profits incurred by client, its subsidiaries, affiliates or successors arising out of or related to the performance of the services hereunder by Cardinal, regardless of whether such claim is based upon any of the above stated reasons or otherwise. Results relate only to the samples identified above. This report shall not be reproduced except in full with written approval of Cardinal Laboratories.

Celey D. Keene, Lab Director/Quality Manager



PHONE (575) 393-2326 • 101 E. MARLAND • HOBBS, NM 88240

Analytical Results For:

ETZ WATER STATION
PO BOX 6056
HOBBS NM, 88241

Project: SCHUBERT
Project Number: SCHUBERT FARMS # 1 WATER SA
Project Manager: BEN DONAHUE
Fax To:

Reported:
15-Jun-20 15:03

Total Recoverable Metals by ICP (E200.7) - Quality Control**Green Analytical Laboratories**

Analyte	Result	Reporting Limit	Units	Spike Level	Source Result	%REC	%REC Limits	RPD	RPD Limit	Notes
---------	--------	--------------------	-------	----------------	------------------	------	----------------	-----	--------------	-------

Batch B200973 - Total Rec. 200.7/200.8/200.2**Blank (B200973-BLK1)**

Prepared: 08-Jun-20 Analyzed: 10-Jun-20

Magnesium	ND	0.100	mg/L							
Calcium	ND	0.100	mg/L							
Sodium	ND	1.00	mg/L							
Potassium	ND	1.00	mg/L							

LCS (B200973-BS1)

Prepared: 08-Jun-20 Analyzed: 10-Jun-20

Sodium	3.35	1.00	mg/L	3.24		103	85-115			
Potassium	8.50	1.00	mg/L	8.00		106	85-115			
Magnesium	20.6	0.100	mg/L	20.0		103	85-115			
Calcium	4.05	0.100	mg/L	4.00		101	85-115			

LCS Dup (B200973-BSD1)

Prepared: 08-Jun-20 Analyzed: 10-Jun-20

Magnesium	20.2	0.100	mg/L	20.0		101	85-115	2.12	20	
Potassium	8.30	1.00	mg/L	8.00		104	85-115	2.40	20	
Sodium	3.25	1.00	mg/L	3.24		100	85-115	3.04	20	
Calcium	3.95	0.100	mg/L	4.00		98.8	85-115	2.38	20	

Cardinal Laboratories

* = Accredited Analyte

PLEASE NOTE: Liability and Damages. Cardinal's liability and client's exclusive remedy for any claim arising, whether based in contract or tort, shall be limited to the amount paid by client for analyses. All claims, including those for negligence or any other cause whatsoever shall be deemed waived unless made in writing and received by Cardinal within thirty (30) days after completion of the applicable service. In no event shall Cardinal be liable for incidental or consequential damage including, without limitation, business interruptions, loss of use, or loss of profits incurred by client, its subsidiaries, affiliates or successors arising out of or related to the performance of the services hereunder by Cardinal, regardless of whether such claim is based upon any of the above stated reasons or otherwise. Results relate only to the samples identified above. This report shall not be reproduced except in full with written approval of Cardinal Laboratories.

Celey D. Keene, Lab Director/Quality Manager



PHONE (575) 393-2326 • 101 E. MARLAND • HOBBS, NM 88240

Notes and Definitions

- J Estimated concentration. Analyte concentration between MDL and RL.
- ND Analyte NOT DETECTED at or above the reporting limit
- RPD Relative Percent Difference
- ** Samples not received at proper temperature of 6°C or below.
- *** Insufficient time to reach temperature.
- Chloride by SM4500Cl-B does not require samples be received at or below 6°C
Samples reported on an as received basis (wet) unless otherwise noted on report

Cardinal Laboratories

*=Accredited Analyte

PLEASE NOTE: Liability and Damages. Cardinal's liability and client's exclusive remedy for any claim arising, whether posed in contract or tort, shall be limited to the amount paid by client for analyses. All claims, including those for negligence or any other cause whatsoever shall be deemed waived unless made in writing and received by Cardinal within thirty (30) days after completion of the applicable service. In no event shall Cardinal be liable for incidental or consequential damage including, without limitation, business interruptions, loss of use, or loss of profits incurred by client, its subsidiaries, affiliates or successors arising out of or related to the performance of the services hereunder by Cardinal, regardless of whether such claim is based upon any of the above stated reasons or otherwise. Results relate only to the samples identified above. This report shall not be reproduced except in full with written approval of Cardinal Laboratories.

A handwritten signature in cursive script, reading "Celey D. Keene".

Celey D. Keene, Lab Director/Quality Manager



CARDINAL
Laboratories

101 East Marland, Hobbs, NM 88240
(575) 393-2326 FAX (575) 393-2476

CHAIN-OF-CUSTODY AND ANALYSIS REQUEST

Company Name: Erz Water Station Project Manager: Ben Donahue Address: PO Box 5102 City: Hobbs State: NM Zip: 88241 Phone #: 575 343 3144 Fax #: Project #: Project Owner: Project Name: Schubert Farms #1 Water Samples Project Location: Schubert Farms #1 Bine Well Sampler Name: Ben Donahue				BILL TO				ANALYSIS REQUEST																											
P.O. #: Company: Attn: Address: City: State: Zip: Phone #: Fax #:				Cations / Anions																															
FOR LAB USE ONLY				MATRIX				PRESERV				SAMPLING																							
Lab I.D.				Sample I.D.				(G)RAB OR (C)OMP. # CONTAINERS				GROUNDWATER WASTEWATER SOIL OIL SLUDGE OTHER				ACID/BASE: ICE / COOL OTHER				DATE TIME															
H001512				1 Bine Water				1				✓								6/3/20 3:48pm															
2				Fresh Water				1				✓								6/3/20 3:50pm															
3				Monitor Well				1				✓								6/3/20 3:45pm															
<p><small>PLEASE NOTE: Liability and Damages. Cardinal's liability and client's exclusive remedy for any claim arising whether based in contract or tort, shall be limited to the amount paid by the client for the analyses. All claims including those for negligence and any other cause whatsoever shall be deemed waived unless made in writing and received by Cardinal within 30 days after completion of the applicable service. In no event shall Cardinal be liable for incidental or consequential damages, including without limitation, business interruptions, loss of use, or loss of profits incurred by client, its subsidiaries, affiliates or successors arising out of or related to the performance of services hereunder by Cardinal, regardless of whether such claim is based upon any of the above stated reasons or otherwise.</small></p>																																			
Relinquished By: Ben Donahue Date: 6/4/2020 Time: 10:25am								Received By: Jamara Oldaker Date: _____ Time: _____								Verbal Result: <input type="checkbox"/> Yes <input type="checkbox"/> No Add'l Phone #: All Results are emailed. Please provide Email address: garjmschubert@gmail.com																			
Relinquished By: _____ Date: _____ Time: _____								Received By: _____ Date: _____ Time: _____								REMARKS:																			
Delivered By: (Circle One) _____ Sampler - UPS - Bus - Other: _____								Observed Temp. °C 0.6 Corrected Temp. °C _____																											
Sample Condition Cool <input checked="" type="checkbox"/> Intact <input type="checkbox"/> Yes <input checked="" type="checkbox"/> No <input type="checkbox"/>								CHECKED BY: (Initials) TO								Turnaround Time: Standard <input checked="" type="checkbox"/> Rush <input type="checkbox"/> Thermometer ID #113 Correction Factor -0.4°C																			
Bacteria (only) Sample Condition Cool <input type="checkbox"/> Intact <input type="checkbox"/> Yes <input type="checkbox"/> No <input type="checkbox"/>								Observed Temp. °C _____ Corrected Temp. °C _____								Turnaround Time: Standard <input checked="" type="checkbox"/> Rush <input type="checkbox"/> Thermometer ID #113 Correction Factor -0.4°C																			



PHONE (575) 393-2326 • 101 E. MARLAND • HOBBS, NM 88240

December 15, 2020

BEN DONAHUE

ETZ WATER STATION

PO BOX 6056

HOBBS, NM 88241

RE: SCHUBERT

Enclosed are the results of analyses for samples received by the laboratory on 12/04/20 14:00.

Cardinal Laboratories is accredited through Texas NELAP under certificate number T104704398-20-13. Accreditation applies to drinking water, non-potable water and solid and chemical materials. All accredited analytes are denoted by an asterisk (*). For a complete list of accredited analytes and matrices visit the TCEQ website at www.tceq.texas.gov/field/qa/lab_accred_certif.html.

Cardinal Laboratories is accredited through the State of Colorado Department of Public Health and Environment for:

Method EPA 552.2	Total Haloacetic Acids (HAA-5)
Method EPA 524.2	Total Trihalomethanes (TTHM)
Method EPA 524.4	Regulated VOCs (V1, V2, V3)

Cardinal Laboratories is accredited through the State of New Mexico Environment Department for:

Method SM 9223-B	Total Coliform and E. coli (Colilert MMO-MUG)
Method EPA 524.2	Regulated VOCs and Total Trihalomethanes (TTHM)
Method EPA 552.2	Total Haloacetic Acids (HAA-5)

Accreditation applies to public drinking water matrices for State of Colorado and New Mexico.

This report meets NELAP requirements and is made up of a cover page, analytical results, and a copy of the original chain-of-custody. If you have any questions concerning this report, please feel free to contact me.

Sincerely,

A handwritten signature in black ink, appearing to read "C. D. Keene".

Celey D. Keene

Lab Director/Quality Manager



PHONE (575) 393-2326 • 101 E. MARLAND • HOBBS, NM 88240

Analytical Results For:

ETZ WATER STATION
PO BOX 6056
HOBBS NM, 88241

Project: SCHUBERT
Project Number: SCHUBERT FARMS #1
Project Manager: BEN DONAHUE
Fax To:

Reported:
15-Dec-20 16:01

Sample ID	Laboratory ID	Matrix	Date Sampled	Date Received
BRINE WATER	H003187-01	Water	03-Dec-20 13:00	04-Dec-20 14:00
FRESH WATER	H003187-02	Water	03-Dec-20 13:05	04-Dec-20 14:00
MONITOR WELL	H003187-03	Water	03-Dec-20 13:02	04-Dec-20 14:00

Cardinal Laboratories

*=Accredited Anal

PLEASE NOTE: Liability and Damages: Cardinal's liability and client's exclusive remedy for any claim arising, whether based in contract or tort, shall be limited to the amount paid by client for analysis. All claims, including those for negligence or other cause whatsoever shall be deemed waived unless made in writing and received by Cardinal within thirty (30) days after completion of the applicable service. In no event shall Cardinal be liable for incidental or consequential damages, including, without limitation, business interruptions, loss of use, or loss of profits incurred by client, its subsidiaries, affiliates or successors arising out of or related to the performance of the services hereunder by Cardinal, regardless of where claim is based upon any of the above stated reasons or otherwise. Results relate only to the samples identified above. This report shall not be reproduced except in full with written approval of Cardinal Laboratories.

Colby D. Keene, Lab Director/Quality Manager



PHONE (575) 393-2326 • 101 E. MARLAND • HOBBS, NM 88240

Analytical Results For:

ETZ WATER STATION
PO BOX 6056
HOBBS NM, 88241

Project: SCHUBERT
Project Number: SCHUBERT FARMS #1
Project Manager: BEN DONAHUE
Fax To:

Reported:
15-Dec-20 16:01

BRINE WATER
H003187-01 (Water)

Analyte	Result	MDL	Reporting Limit	Units	Dilution	Batch	Analyst	Analyzed	Method	Notes
Cardinal Laboratories										
Inorganic Compounds										
Alkalinity, Bicarbonate	244		5.00	mg/L	1	0120709	GM	07-Dec-20	310.1	
Alkalinity, Carbonate	<1.00		1.00	mg/L	1	0120709	GM	07-Dec-20	310.1	
Chloride*	176000		4.00	mg/L	1	0111906	GM	07-Dec-20	4500-Cl-B	
Conductivity*	262000		1.00	umhos/cm @ 25°C	1	0120707	GM	07-Dec-20	120.1	
pH*	6.90		0.100	pH Units	1	0120707	GM	07-Dec-20	150.1	
Temperature °C	23.0			pH Units	1	0120707	GM	07-Dec-20	150.1	
Sulfate*	2310		500	mg/L	50	0120404	GM	10-Dec-20	375.4	
TDS*	291000		5.00	mg/L	1	0112304	GM	09-Dec-20	160.1	
Alkalinity, Total*	200		4.00	mg/L	1	0120709	GM	07-Dec-20	310.1	

Green Analytical Laboratories**Total Recoverable Metals by ICP (E200.7)**

Calcium*	750		50.0	mg/L	500	B202689	AES	11-Dec-20	EPA200.7	
Magnesium*	198		50.0	mg/L	500	B202689	AES	11-Dec-20	EPA200.7	
Potassium*	274	75.8	500	mg/L	500	B202689	AES	11-Dec-20	EPA200.7	
Sodium*	108000		500	mg/L	500	B202689	AES	11-Dec-20	EPA200.7	

Cardinal Laboratories

* = Accredited Analysis

PLEASE NOTE: Liability and Damages. Cardinal's liability and client's exclusive remedy for any claim arising, whether based in contract or tort, shall be limited to the amount paid by client for analyses. All claims, including those for negligence or other cause whatsoever shall be deemed waived unless made in writing and received by Cardinal within thirty (30) days after completion of the applicable service. In no event shall Cardinal be liable for incidental or consequential (including, without limitation, business interruptions, loss of use, or loss of profits incurred by client, its subsidiaries, affiliates or successors arising out of or related to the performance of the services hereunder by Cardinal, regardless of whether claim is based upon any of the above stated reasons or otherwise. Results relate only to the samples identified above. This report shall not be reproduced except in full with written approval of Cardinal Laboratories.

Coley D. Keene, Lab Director/Quality Manager



PHONE (575) 393-2326 • 101 E. MARLAND • HOBBS, NM 88240

Analytical Results For:

ETZ WATER STATION
PO BOX 6056
HOBBS NM, 88241

Project: SCHUBERT
Project Number: SCHUBERT FARMS #1
Project Manager: BEN DONAHUE
Fax To:

Reported:
15-Dec-20 16:01

FRESH WATER
H003187-02 (Water)

Analyte	Result	MDL	Reporting Limit	Units	Dilution	Batch	Analyst	Analyzed	Method	Not
Cardinal Laboratories										
Inorganic Compounds										
Alkalinity, Bicarbonate	234		5.00	mg/L	1	0120709	GM	07-Dec-20	310.1	
Alkalinity, Carbonate	<1.00		1.00	mg/L	1	0120709	GM	07-Dec-20	310.1	
Chloride*	240		4.00	mg/L	1	0111906	GM	07-Dec-20	4500-Cl-B	
Conductivity*	1620		1.00	umhos/cm @ 25°C	1	0120707	GM	07-Dec-20	120.1	
pH*	7.87		0.100	pH Units	1	0120707	GM	07-Dec-20	150.1	
Temperature °C	23.0			pH Units	1	0120707	GM	07-Dec-20	150.1	
Sulfate*	233		50.0	mg/L	5	0120404	GM	10-Dec-20	375.4	
TDS*	929		5.00	mg/L	1	0112304	GM	09-Dec-20	160.1	
Alkalinity, Total*	192		4.00	mg/L	1	0120709	GM	07-Dec-20	310.1	

Green Analytical Laboratories**Total Recoverable Metals by ICP (E200.7)**

Calcium*	140		0.500	mg/L	5	B202689	AES	11-Dec-20	EPA200.7	
Magnesium*	39.2		0.500	mg/L	5	B202689	AES	11-Dec-20	EPA200.7	
Potassium*	4.37	0.758	5.00	mg/L	5	B202689	AES	11-Dec-20	EPA200.7	
Sodium*	124		5.00	mg/L	5	B202689	AES	11-Dec-20	EPA200.7	

Cardinal Laboratories

* = Accredited Analy

PLEASE NOTE: Liability and Damages. Cardinal's liability and client's exclusive remedy for any claim arising, whether based in contract or tort, shall be limited to the amount paid by client for analysis. All claims, including those for negligence or other cause whatsoever shall be deemed waived unless made in writing and received by Cardinal within thirty (30) days after completion of the applicable service. In no event shall Cardinal be liable for incidental or consequential damages, including, without limitation, business interruptions, loss of use, or loss of profits incurred by client, its subsidiaries, affiliates or successors arising out of or related to the performance of the services hereunder by Cardinal, regardless of whether claim is based upon any of the above stated reasons or otherwise. Results relate only to the samples identified above. This report shall not be reproduced except in full with written approval of Cardinal Laboratories.

Colby D. Keene, Lab Director/Quality Manager



PHONE (575) 393-2326 • 101 E. MARLAND • HOBBS, NM 88240

Analytical Results For:

ETZ WATER STATION
PO BOX 6056
HOBBS NM, 88241

Project: SCHUBERT
Project Number: SCHUBERT FARMS #1
Project Manager: BEN DONAHUE
Fax To:

Reported:
15-Dec-20 16:01

MONITOR WELL**H003187-03 (Water)**

Analyte	Result	MDL	Reporting Limit	Units	Dilution	Batch	Analyst	Analyzed	Method	Not
Cardinal Laboratories										
Inorganic Compounds										
Alkalinity, Bicarbonate	220		5.00	mg/L	1	0120709	GM	07-Dec-20	310.1	
Alkalinity, Carbonate	<1.00		1.00	mg/L	1	0120709	GM	07-Dec-20	310.1	
Chloride*	372		4.00	mg/L	1	0111906	GM	07-Dec-20	4500-CL-B	
Conductivity*	2060		1.00	umhos/cm @ 25°C	1	0120707	GM	07-Dec-20	120.1	
pH*	7.52		0.100	pH Units	1	0120707	GM	07-Dec-20	150.1	
Temperature °C	23.0			pH Units	1	0120707	GM	07-Dec-20	150.1	
Sulfate*	263		50.0	mg/L	5	0120404	GM	10-Dec-20	375.4	
TDS*	1160		5.00	mg/L	1	0120812	GM	11-Dec-20	160.1	
Alkalinity, Total*	180		4.00	mg/L	1	0120709	GM	07-Dec-20	310.1	

Green Analytical Laboratories**Total Recoverable Metals by ICP (E200.7)**

Calcium*	185		0.500	mg/L	5	B202689	AES	11-Dec-20	EPA200.7	
Magnesium*	53.8		0.500	mg/L	5	B202689	AES	11-Dec-20	EPA200.7	
Potassium*	5.23	0.758	5.00	mg/L	5	B202689	AES	11-Dec-20	EPA200.7	
Sodium*	135		5.00	mg/L	5	B202689	AES	11-Dec-20	EPA200.7	

Cardinal Laboratories

* = Accredited Analysis

PLEASE NOTE: Liability and Damages. Cardinal's liability and client's exclusive remedy for any claim arising, whether based in contract or tort, shall be limited to the amount paid by client for analyses. All claims, including those for negligence or other cause whatsoever shall be deemed waived unless made in writing and received by Cardinal within thirty (30) days after completion of the applicable service. In no event shall Cardinal be liable for incidental or consequential damages, including, without limitation, business interruptions, loss of use, or loss of profits incurred by client, its subsidiaries, affiliates or successors arising out of or related to the performance of the services hereunder by Cardinal, regardless of whether claim is based upon any of the above stated reasons or otherwise. Results relate only to the samples identified above. This report shall not be reproduced except in full with written approval of Cardinal Laboratories.

Coley D. Keene, Lab Director/Quality Manager



PHONE (575) 393-2326 • 101 E. MARLAND • HOBBS, NM 88240

Analytical Results For:

ETZ WATER STATION
PO BOX 6056
HOBBS NM, 88241

Project: SCHUBERT
Project Number: SCHUBERT FARMS #1
Project Manager: BEN DONAHUE
Fax To:

Reported:
15-Dec-20 16:01

Inorganic Compounds - Quality Control
Cardinal Laboratories

Analyte	Result	Reporting Limit	Units	Spike Level	Source Result	%REC	%REC Limits	RPD	RPD Limit	Notes
Batch 0111906 - General Prep - Wet Chem										
Blank (0111906-BLK1)				Prepared & Analyzed: 19-Nov-20						
Chloride	ND	4.00	mg/L							
LCS (0111906-BS1)				Prepared & Analyzed: 19-Nov-20						
Chloride	100	4.00	mg/L	100		100	80-120			
LCS Dup (0111906-BSD1)				Prepared & Analyzed: 19-Nov-20						
Chloride	100	4.00	mg/L	100		100	80-120	0.00	20	
Batch 0112304 - Filtration										
Blank (0112304-BLK1)				Prepared: 20-Nov-20 Analyzed: 23-Nov-20						
TDS	ND	5.00	mg/L							
LCS (0112304-BS1)				Prepared: 20-Nov-20 Analyzed: 23-Nov-20						
TDS	494		mg/L	500		98.8	80-120			
Duplicate (0112304-DUP1)				Source: H003086-01 Prepared: 20-Nov-20 Analyzed: 23-Nov-20						
TDS	410	5.00	mg/L		414			0.971	20	
Batch 0120404 - General Prep - Wet Chem										
Blank (0120404-BLK1)				Prepared: 04-Dec-20 Analyzed: 10-Dec-20						
Sulfate	ND	10.0	mg/L							
LCS (0120404-BS1)				Prepared: 04-Dec-20 Analyzed: 10-Dec-20						
Sulfate	21.0	10.0	mg/L	20.0		105	80-120			

Cardinal Laboratories

*=Accredited Anal

PLEASE NOTE: Liability and Damages. Cardinal's liability and client's exclusive remedy for any claim arising, whether based in contract or tort, shall be limited to the amount paid by client for analyses. All claims, including those for negligence, any other cause whatsoever shall be deemed waived unless made in writing and received by Cardinal within thirty (30) days after completion of the applicable service. In no event shall Cardinal be liable for incidental or consequential damages, including, without limitation, business interruptions, loss of use, or loss of profits incurred by client, its subsidiaries, affiliates or successors arising out of or related to the performance of the services hereunder by Cardinal, regardless of whether claim is based upon any of the above stated reasons or otherwise. Results relate only to the samples identified above. This report shall not be reproduced except in full with written approval of Cardinal Laboratories.

Coley D. Keena, Lab Director/Quality Manager



PHONE (575) 393-2326 • 101 E. MARLAND • HOBBS, NM 88240

Analytical Results For:

ETZ WATER STATION
PO BOX 6056
HOBBS NM, 88241

Project: SCHUBERT
Project Number: SCHUBERT FARMS #1
Project Manager: BEN DONAHUE
Fax To:

Reported:
15-Dec-20 16:01

Inorganic Compounds - Quality Control**Cardinal Laboratories**

Analyte	Result	Reporting Limit	Units	Spike Level	Source Result	%REC	%REC Limits	RPD	RPD Limit	Notes
---------	--------	-----------------	-------	-------------	---------------	------	-------------	-----	-----------	-------

Batch 0120404 - General Prep - Wet Chem**LCS Dup (0120404-BSD1)**

Prepared: 04-Dec-20 Analyzed: 10-Dec-20

Sulfate	20.2	10.0	mg/L	20.0		101	80-120	3.94	20	
---------	------	------	------	------	--	-----	--------	------	----	--

Batch 0120707 - General Prep - Wet Chem**LCS (0120707-BS1)**

Prepared & Analyzed: 07-Dec-20

Conductivity	102000		uS/cm	100000		102	80-120			
pH	7.09		pH Units	7.00		101	90-110			

Duplicate (0120707-DUP1)

Source: H003187-01

Prepared & Analyzed: 07-Dec-20

pH	7.00	0.100	pH Units	6.90				1.44	20	
Conductivity	262000	1.00	umhos/cm @ 25°C	262000				0.305	20	
Temperature °C	23.0		pH Units	23.0				0.00	200	

Batch 0120709 - General Prep - Wet Chem**Blank (0120709-BLK1)**

Prepared & Analyzed: 07-Dec-20

Alkalinity, Carbonate	ND	1.00	mg/L							
Alkalinity, Bicarbonate	5.00	5.00	mg/L							
Alkalinity, Total	4.00	4.00	mg/L							

LCS (0120709-BS1)

Prepared & Analyzed: 07-Dec-20

Alkalinity, Carbonate	ND	2.50	mg/L				80-120			
Alkalinity, Bicarbonate	305	12.5	mg/L				80-120			
Alkalinity, Total	250	10.0	mg/L	250		100	80-120			

LCS Dup (0120709-BSD1)

Prepared & Analyzed: 07-Dec-20

Alkalinity, Carbonate	ND	2.50	mg/L				80-120		20	
Alkalinity, Bicarbonate	318	12.5	mg/L				80-120	4.02	20	
Alkalinity, Total	260	10.0	mg/L	250		104	80-120	3.92	20	

Cardinal Laboratories

* = Accredited Analyte

PLEASE NOTE: Liability and Damages. Cardinal's liability and client's exclusive remedy for any claim arising, whether based in contract or tort, shall be limited to the amount paid by client for analyses. All claims, including those for negligence, without limitation, business interruptions, loss of use, or loss of profits incurred by client, its subsidiaries, affiliates or successors arising out of or related to the performance of the services hereunder by Cardinal, regardless of whether claim is based upon any of the above stated reasons or otherwise. Results relate only to the samples identified above. This report shall not be reproduced except in full with written approval of Cardinal Laboratories.

Coley D. Keene, Lab Director/Quality Manager



PHONE (575) 393-2326 • 101 E. MARLAND • HOBBS, NM 88240

Analytical Results For:

ETZ WATER STATION
PO BOX 6056
HOBBS NM, 88241

Project: SCHUBERT
Project Number: SCHUBERT FARMS #1
Project Manager: BEN DONAHUE
Fax To:

Reported:
15-Dec-20 16:01

Inorganic Compounds - Quality Control**Cardinal Laboratories**

Analyte	Result	Reporting Limit	Units	Spike Level	Source Result	%REC	%REC Limits	RPD	RPD Limit	Notes
Batch 0120812 - Filtration										
Blank (0120812-BLK1)										
TDS	ND	5.00	mg/L							Prepared: 08-Dec-20 Analyzed: 11-Dec-20
LCS (0120812-BS1)										
TDS	532		mg/L	500		106	80-120			Prepared: 08-Dec-20 Analyzed: 11-Dec-20
Duplicate (0120812-DUP1)										
TDS	1090	5.00	mg/L		1160			5.88	20	Source: H003187-03 Prepared: 08-Dec-20 Analyzed: 11-Dec-20

Cardinal Laboratories

*=Accredited Analy

PLEASE NOTE: Liability and Damages. Cardinal's liability and client's exclusive remedy for any claim arising, whether based in contract or tort, shall be limited to the amount paid by client for analyses. All claims, including those for negligence or other cause whatsoever shall be deemed waived unless made in writing and received by Cardinal within thirty (30) days after completion of the applicable service. In no event shall Cardinal be liable for incidental or consequential damages, including, without limitation, business interruptions, loss of use, or loss of profits incurred by client, its subsidiaries, affiliates or successors arising out of or related to the performance of the services hereunder by Cardinal, regardless of whether claim is based upon any of the above stated reasons or otherwise. Results relate only to the samples identified above. This report shall not be reproduced except in full with written approval of Cardinal Laboratories.

Celestine Keene, Lab Director/Quality Manager



PHONE (575) 393-2326 • 101 E. MARLAND • HOBBS, NM 88240

Analytical Results For:

ETZ WATER STATION
PO BOX 6056
HOBBS NM, 88241

Project: SCHUBERT
Project Number: SCHUBERT FARMS #1
Project Manager: BEN DONAHUE
Fax To:

Reported:
15-Dec-20 16:01

Total Recoverable Metals by ICP (E200.7) - Quality Control**Green Analytical Laboratories**

Analyte	Result	Reporting Limit	Units	Spike Level	Source Result	%REC	%REC Limits	RPD	RPD Limit	Notes
Batch B202689 - Total Rec. 200.7/200.8/200.2										
Blank (B202689-BLK1)				Prepared: 10-Dec-20 Analyzed: 11-Dec-20						
Magnesium	ND	0.100	mg/L							
Calcium	ND	0.100	mg/L							
Sodium	ND	1.00	mg/L							
Potassium	ND	1.00	mg/L							
LCS (B202689-BS1)				Prepared: 10-Dec-20 Analyzed: 11-Dec-20						
Sodium	3.32	1.00	mg/L	3.24		103	85-115			
Potassium	7.99	1.00	mg/L	8.00		99.9	85-115			
Magnesium	20.4	0.100	mg/L	20.0		102	85-115			
Calcium	3.93	0.100	mg/L	4.00		98.2	85-115			
LCS Dup (B202689-BSD1)				Prepared: 10-Dec-20 Analyzed: 11-Dec-20						
Magnesium	20.9	0.100	mg/L	20.0		104	85-115	2.36	20	
Potassium	7.98	1.00	mg/L	8.00		99.8	85-115	0.164	20	
Sodium	3.37	1.00	mg/L	3.24		104	85-115	1.39	20	
Calcium	4.02	0.100	mg/L	4.00		101	85-115	2.40	20	

Cardinal Laboratories

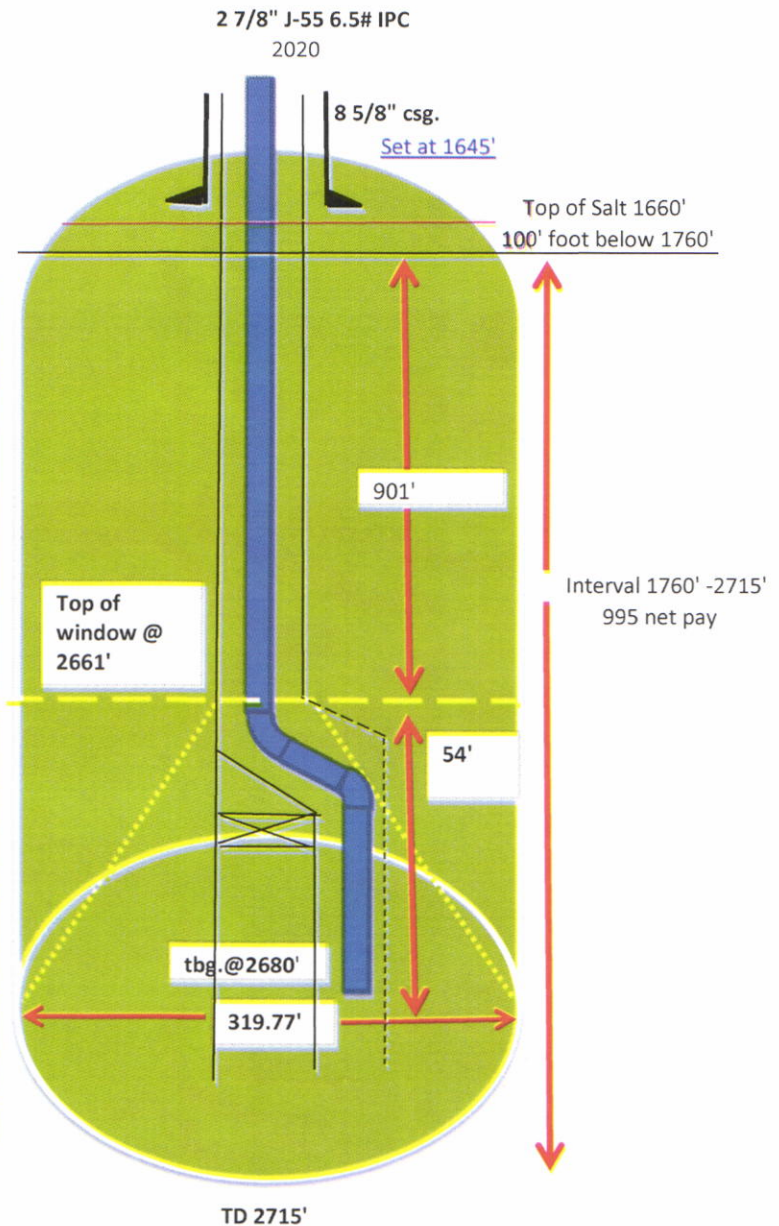
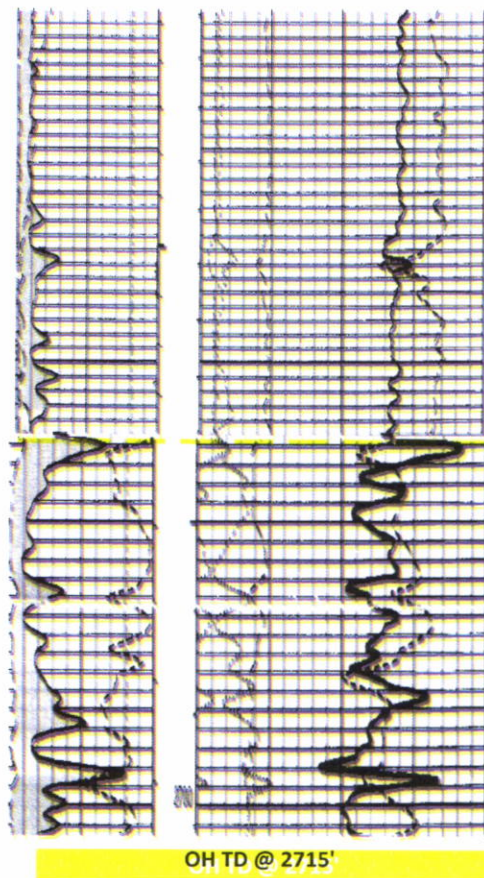
*=Accredited Analy

PLEASE NOTE: Liability and Damages. Cardinal's liability and client's exclusive remedy for any claim arising, whether based in contract or tort, shall be limited to the amount paid by client for analyses. All claims, including those for negligence or other cause whatsoever shall be deemed waived unless made in writing and received by Cardinal within thirty (30) days after completion of the applicable service. In no event shall Cardinal be liable for incidental or consequential damages, including, without limitation, business interruptions, loss of use, or loss of profits incurred by client, its subsidiaries, affiliates or successors arising out of or related to the performance of the services hereunder by Cardinal, regardless of whether claim is based upon any of the above stated reasons or otherwise. Results relate only to the samples identified above. This report shall not be reproduced except in full with written approval of Cardinal Laboratories.

Coley D. Keene, Lab Director/Quality Manager

Schubert Farms Well No1
 API 30-025-37548
 B SEC 25 T19S R38E
 LAT: 32.6375999 LONG:-103.0988007

CAVERN SIZE BY CUBIC FOOT OF VOLUME



PPG 9.97 brine
 PPG 8.34 fresh
 SG 1.1951
 2017 thru Dec. 2020 Total Brine bbl. 946,865
 122.136 LBS / BBL = 115,646,304 LBS HALITE
 (115,646,304 LBS) / (80BLS per ft³) = 1,445,579 ft³

$$V = \pi R^2 h / 3$$

$$V = (3.14159 * 159.8858^2) * (54') / 3$$

$$V = 1,445,578.89 \text{ ft}^3$$

Est. height is 54'
 Est. cavern floor diameter is 319.77'
 Cavern Ratio 319.77' / 955 = 0.3348 Factor

District I
1625 N. French Dr., Hobbs, NM 88240
Phone:(575) 393-6161 Fax:(575) 393-0720
District II
811 S. First St., Artesia, NM 88210
Phone:(575) 748-1283 Fax:(575) 748-9720
District III
1000 Rio Brazos Rd., Aztec, NM 87410
Phone:(505) 334-6178 Fax:(505) 334-6170
District IV
1220 S. St Francis Dr., Santa Fe, NM 87505
Phone:(505) 476-3470 Fax:(505) 476-3462

State of New Mexico
Energy, Minerals and Natural Resources
Oil Conservation Division
1220 S. St Francis Dr.
Santa Fe, NM 87505

COMMENTS

Action 19990

COMMENTS

Operator: HRC INC P.O. Box 5102 Hobbs, NM 88241	OGRID: 131652
	Action Number: 19990
	Action Type: [UF-DP] Discharge Permit (DISCHARGE PERMIT)

COMMENTS

Created By	Comment	Comment Date
cchavez	BW-36 Annual Report 2020 Schubert Farms No. 1	6/9/2021

District I
1625 N. French Dr., Hobbs, NM 88240
Phone:(575) 393-6161 Fax:(575) 393-0720
District II
811 S. First St., Artesia, NM 88210
Phone:(575) 748-1283 Fax:(575) 748-9720
District III
1000 Rio Brazos Rd., Aztec, NM 87410
Phone:(505) 334-6178 Fax:(505) 334-6170
District IV
1220 S. St Francis Dr., Santa Fe, NM 87505
Phone:(505) 476-3470 Fax:(505) 476-3462

State of New Mexico
Energy, Minerals and Natural Resources
Oil Conservation Division
1220 S. St Francis Dr.
Santa Fe, NM 87505

CONDITIONS

Action 19990

CONDITIONS

Operator: HRC INC P.O. Box 5102 Hobbs, NM 88241	OGRID: 131652
	Action Number: 19990
	Action Type: [UF-DP] Discharge Permit (DISCHARGE PERMIT)

CONDITIONS

Created By	Condition	Condition Date
cchavez	None	6/9/2021