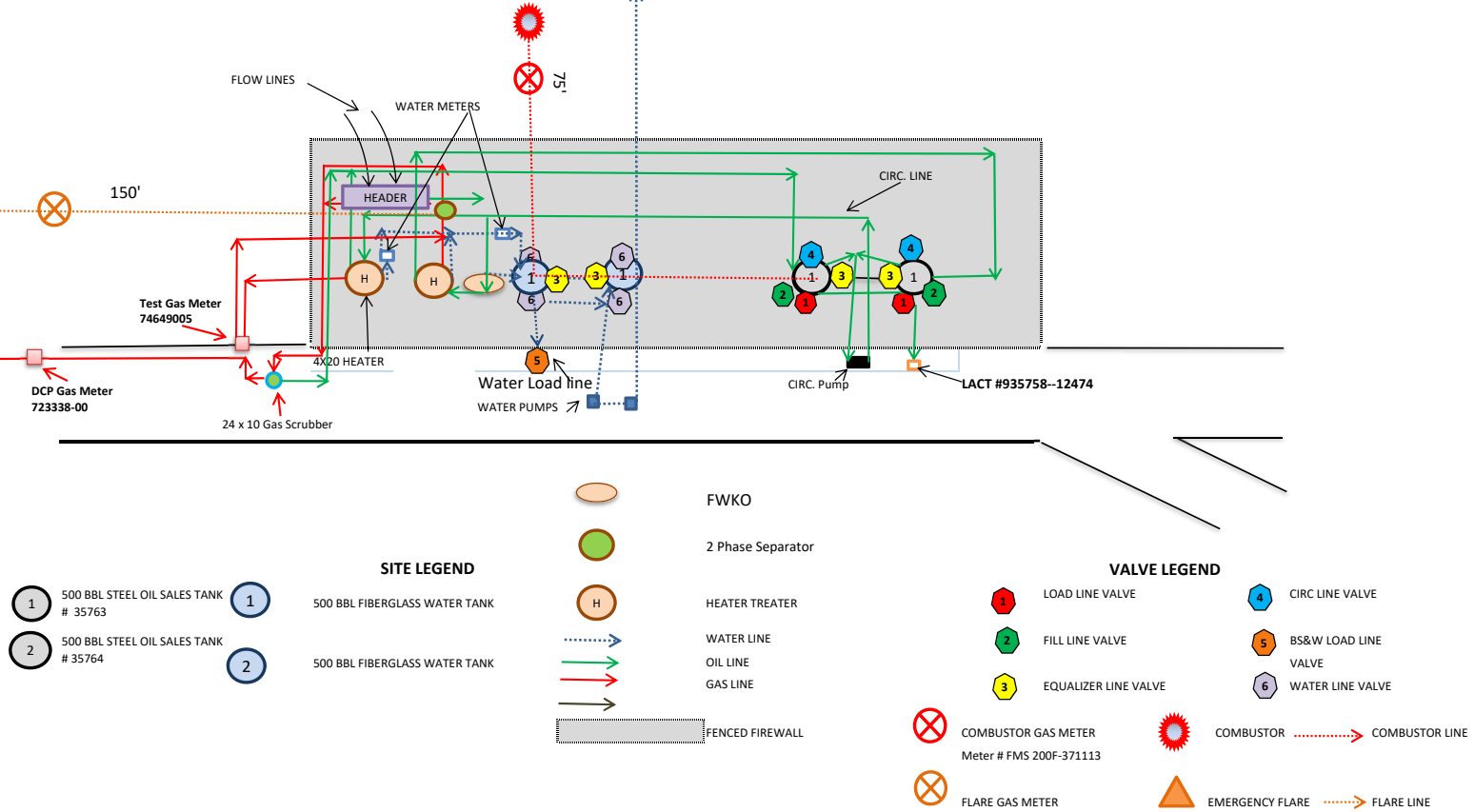


A diagram of a horizontal red line representing a gas line. An arrow at the left end points left. A red square is located on the line. An arrow points from the text 'DCP Gas Meter 723338-00' to this square.

PRODUCED WATER IS TRANSFERRED TO GJSAU WF STATION
(LOCATED AT T17S, R 30E, Sec. 13 , Unit K, NESW)





District I
1625 N. French Dr., Hobbs, NM 88240
Phone:(575) 393-6161 Fax:(575) 393-0720
District II
811 S. First St., Artesia, NM 88210
Phone:(575) 748-1283 Fax:(575) 748-9720
District III
1000 Rio Brazos Rd., Aztec, NM 87410
Phone:(505) 334-6178 Fax:(505) 334-6170
District IV
1220 S. St Francis Dr., Santa Fe, NM 87505
Phone:(505) 476-3470 Fax:(505) 476-3462

State of New Mexico
Energy, Minerals and Natural Resources
Oil Conservation Division
1220 S. St Francis Dr.
Santa Fe, NM 87505

QUESTIONS

Action 74405

QUESTIONS

Operator: BURNETT OIL CO INC 801 Cherry Street Unit #9 Fort Worth, TX 76102	OGRID: 3080
	Action Number: 74405
	Action Type: [UF-FAC] TB Registration (TB-REG)

QUESTIONS

Facility Details <i>Please answer all of the questions in this group.</i>	
Name of the facility	Gissler B 2 Tank Battery
Date the facility was opened	01/01/1971
Depth to ground water, if known	Not answered.

Verification	
Does the operator have other facilities with a matching name	No
Are there other facilites located within approximately 50 feet	No

District I
1625 N. French Dr., Hobbs, NM 88240
Phone:(575) 393-6161 Fax:(575) 393-0720
District II
811 S. First St., Artesia, NM 88210
Phone:(575) 748-1283 Fax:(575) 748-9720
District III
1000 Rio Brazos Rd., Aztec, NM 87410
Phone:(505) 334-6178 Fax:(505) 334-6170
District IV
1220 S. St Francis Dr., Santa Fe, NM 87505
Phone:(505) 476-3470 Fax:(505) 476-3462

State of New Mexico
Energy, Minerals and Natural Resources
Oil Conservation Division
1220 S. St Francis Dr.
Santa Fe, NM 87505

ACKNOWLEDGMENTS

Action 74405

ACKNOWLEDGMENTS

Operator: BURNETT OIL CO INC 801 Cherry Street Unit #9 Fort Worth, TX 76102	OGRID: 3080
	Action Number: 74405
	Action Type: [UF-FAC] TB Registration (TB-REG)

ACKNOWLEDGMENTS

<input checked="" type="checkbox"/>	I certify that I am authorized to register a facility on behalf of the responsible operator.
<input checked="" type="checkbox"/>	I certify that I will notify OCD of any changes of ownership for this facility.
<input checked="" type="checkbox"/>	I certify that I will notify OCD when this facility is closed.