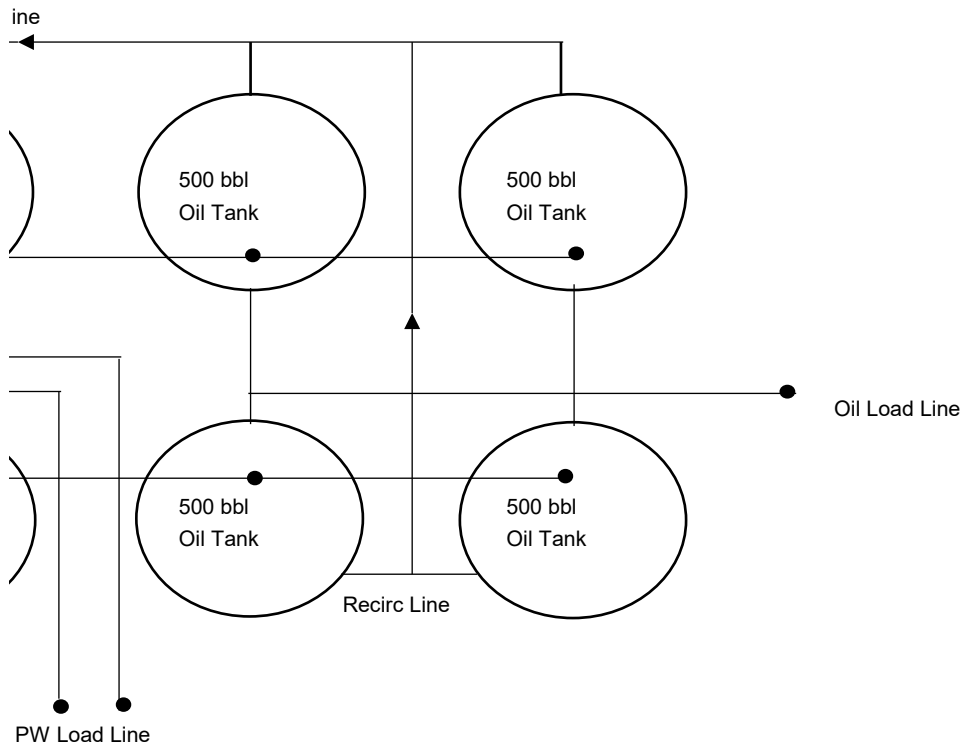
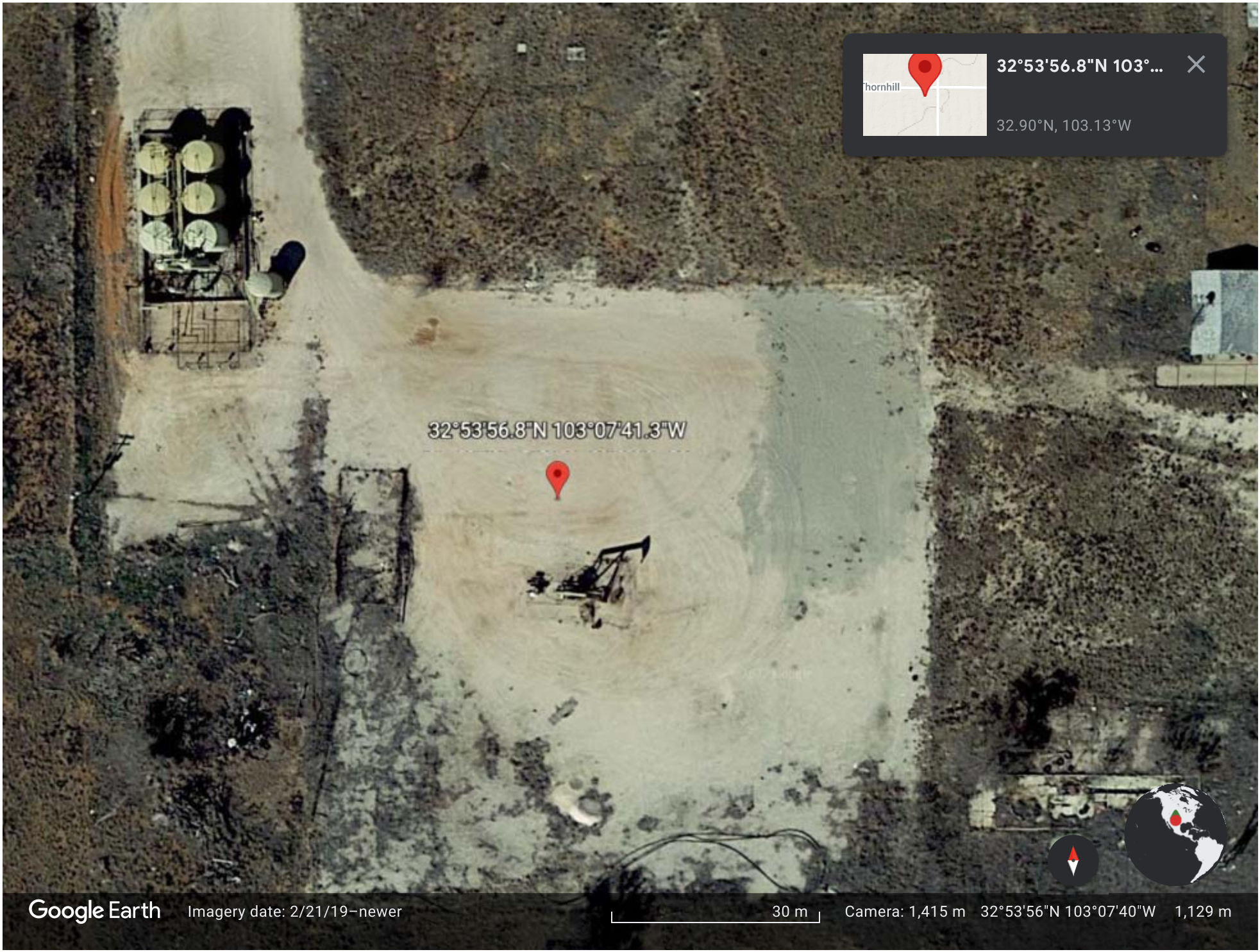
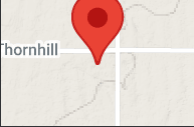


Wynn Ramsland TB
30-025-39622
Harvard Petroleum Company, LLC - Operator
A-27-16S-38E, 330 FNL & 500 FEL
32.8989868, -103.1280594

site security plan located at HPC offices, 200 E. 2nd, Roswell, NM







32°53'56.8"N 103°...

32.90°N, 103.13°W

✕

District I
1625 N. French Dr., Hobbs, NM 88240
Phone:(575) 393-6161 Fax:(575) 393-0720
District II
811 S. First St., Artesia, NM 88210
Phone:(575) 748-1283 Fax:(575) 748-9720
District III
1000 Rio Brazos Rd., Aztec, NM 87410
Phone:(505) 334-6178 Fax:(505) 334-6170
District IV
1220 S. St Francis Dr., Santa Fe, NM 87505
Phone:(505) 476-3470 Fax:(505) 476-3462

State of New Mexico
Energy, Minerals and Natural Resources
Oil Conservation Division
1220 S. St Francis Dr.
Santa Fe, NM 87505

QUESTIONS

Action 81145

QUESTIONS

Operator: HARVARD PETROLEUM COMPANY, LLC P.O. Box 936 Roswell, NM 88202	OGRID: 10155
	Action Number: 81145
	Action Type: [UF-FAC] TB Registration (TB-REG)

QUESTIONS

Facility Details <i>Please answer all of the questions in this group.</i>	
Name of the facility	Wynn Ramsland Tank Battery
Date the facility was opened	Not answered.
Depth to ground water, if known	Not answered.

Verification	
Does the operator have other facilities with a matching name	No
Are there other facilites located within approximately 50 feet	No

District I
1625 N. French Dr., Hobbs, NM 88240
Phone:(575) 393-6161 Fax:(575) 393-0720
District II
811 S. First St., Artesia, NM 88210
Phone:(575) 748-1283 Fax:(575) 748-9720
District III
1000 Rio Brazos Rd., Aztec, NM 87410
Phone:(505) 334-6178 Fax:(505) 334-6170
District IV
1220 S. St Francis Dr., Santa Fe, NM 87505
Phone:(505) 476-3470 Fax:(505) 476-3462

State of New Mexico
Energy, Minerals and Natural Resources
Oil Conservation Division
1220 S. St Francis Dr.
Santa Fe, NM 87505

ACKNOWLEDGMENTS

Action 81145

ACKNOWLEDGMENTS

Operator: HARVARD PETROLEUM COMPANY, LLC P.O. Box 936 Roswell, NM 88202	OGRID: 10155
	Action Number: 81145
	Action Type: [UF-FAC] TB Registration (TB-REG)

ACKNOWLEDGMENTS

<input checked="" type="checkbox"/>	I certify that I am authorized to register a facility on behalf of the responsible operator.
<input checked="" type="checkbox"/>	I certify that I will notify OCD of any changes of ownership for this facility.
<input checked="" type="checkbox"/>	I certify that I will notify OCD when this facility is closed.