

RF-451 -  
NDBL Recycle Facility  
ID fSL2019032229

C-147 Closure

OWL SWD OPERATING,  
LLC [308339]  
March 16, 2022

District I  
1625 N. French Dr., Hobbs, NM 88240  
District II  
811 S. First St., Artesia, NM 88210  
District III  
1000 Rio Brazos Road, Aztec, NM 87410  
District IV  
1220 S. St. Francis Dr., Santa Fe, NM 87505

State of New Mexico  
Energy Minerals and Natural Resources  
Department  
Oil Conservation Division  
1220 South St. Francis Dr.  
Santa Fe, NM 87505

Form C-147  
Revised April 3, 2017

## Recycling Facility Only

Type of action: ☐ Permit ☐ Registration ☐ Modification ☒ Closure ☐ Other (explain) \_\_\_\_\_

Be advised that approval of this request does not relieve the operator of liability should operations result in pollution of surface water, ground water or the environment. Nor does approval relieve the operator of its responsibility to comply with any other applicable governmental authority's rules, regulations or ordinances.

1.  
Operator: Oilfield Water Logistics (For multiple operators attach page with information) OGRID #: \_\_\_\_\_  
Address: 8201 Preston Rd, Suite 520, Dallas, TX 75225  
Facility or well name (include API# if associated with a well): NDBL Recycle  
OCD Permit Number: 1RF-451 (For new facilities the permit number will be assigned by the district office)  
U/L or Qtr/Qtr NW/NW Section 23 Township 24S Range 33E County: Lea County  
Surface Owner: ☐ Federal ☐ State ☒ Private ☐ Tribal Trust or Indian Allotment

2.  
☒ **Recycling Facility:**  
Location of recycling facility (if applicable): Latitude 32.209590 Longitude -103.550533 NAD83  
Proposed Use: ☐ Drilling\* ☒ Completion\* ☒ Production\* ☐ Plugging\*  
*\*The re-use of produced water may NOT be used until fresh water zones are cased and cemented*  
☐ Other, *requires permit for other uses. Describe use, process, testing, volume of produced water and ensure there will be no adverse impact on groundwater or surface water.*  
☒ Fluid Storage  
☒ Above ground tanks ☐ Activity permitted under 19.15.17 NMAC explain type \_\_\_\_\_  
☐ Activity permitted under 19.15.36 NMAC explain type: \_\_\_\_\_ ☐ Other explain \_\_\_\_\_  
☒ **Closure Report (required within 60 days of closure completion):** ☒ **Recycling Facility Closure Completion Date:** 1/18/2022

3.  
**Variances:**  
Justifications and/or demonstrations that the proposed variance will afford reasonable protection against contamination of fresh water, human health, and the environment.  
*Check the below box only if a variance is requested:*  
☐ Variance(s): Requests must be submitted to the appropriate division district for consideration of approval. If a Variance is requested, include the variance information on a separate page and attach it to the C-147 as part of the application.  
**If a Variance is requested, it must be approved prior to implementation.**

4.  
**Operator Application Certification:**  
I hereby certify that the information and attachments submitted with this application are true, accurate and complete to the best of my knowledge and belief.  
Name (Print): Nick Hines Title: President  
Signature: [Signature] Date: 2/7/2022  
e-mail address: nhines@oilfieldwaterlogistics.com Telephone: 214-292-2011

5.  
OCD Representative Signature: Victoria Venegas Approval/Registration Date: 03/16/2022  
Title: Environmental Specialist OCD Permit Number: 1RF-451  
☐ OCD Conditions \_\_\_\_\_  
☐ Additional OCD Conditions on Attachment \_\_\_\_\_

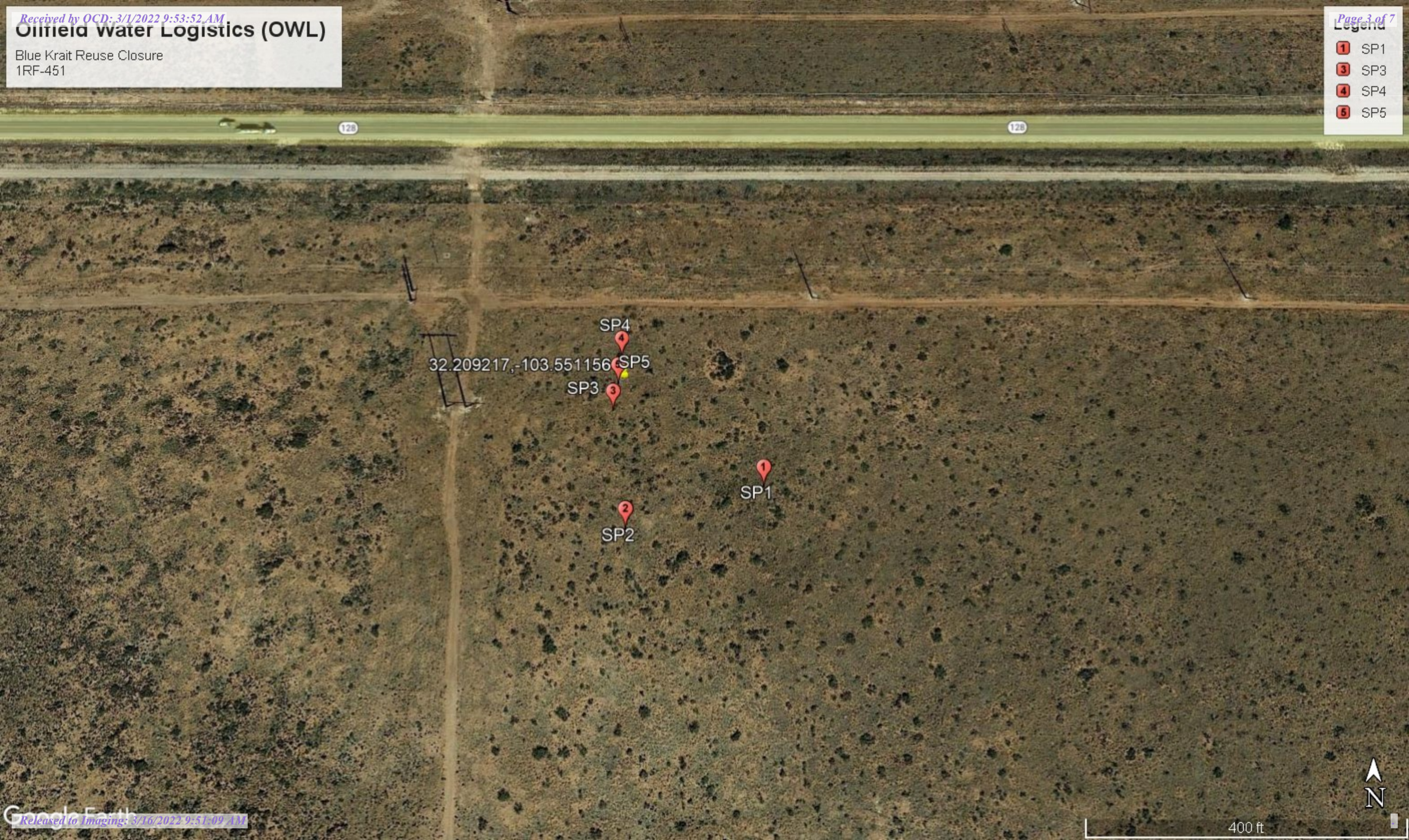


# Oilfield water Logistics (OWL)

Blue Krait Reuse Closure  
1RF-451

## Legend

- 1 SP1
- 3 SP3
- 4 SP4
- 5 SP5





1RF -451 - NDBL Recycle - OWL SWD Operating, LLC  
Closure Sampling

Location	GPS Coordinates	Sample Date	Lab I.D>	Sample Depth (feet BGS)	Field Screening		Laboratory Results										
					PID Result (PPM)	Titration Result (mg/kg)	Chloride (mg/kg)	Total TPH (mg/kg)	TPH GRO + DRO (mg/kg)	BTEX (mg/kg)	Benzene (mg/kg)	Toluene (mg/kg)	Ethyl-benzene (mg/kg)	Total Xylenes (mg/kg)	TPH GRO (mg/kg)	TPH DRO (mg/kg)	TPH Ext DRO (mg/kg)
sp1	32.208768,-103.550503	1/24/22		Surf	0.29	724											
sp1	32.208768,-103.550503	1/24/22		1'	0.20	499											
sp1	32.208768,-103.550503	1/24/22		2'	0.18	449											
sp1	32.208768,-103.550503	1/24/22		3'	0.15	374											
sp1	32.208768,-103.550503	1/24/22		4'	0.18	449											
sp1	32.208768,-103.550503	1/24/22	H220261-01	2'			160	<20	<20	<0.300	<0.050	<0.050	<0.050	<0.150	<10.0	<10.0	<10.0
sp1	32.208768,-103.550503	1/24/22	H220261-02	4'			128	<20	<20	<0.300	<0.050	<0.050	<0.050	<0.150	<10.0	<10.0	<10.0
sp2	32.208607,-103.551109	1/24/22		Surf	1.47	3673											
sp2	32.208607,-103.551109	1/24/22		1'	0.15	374.00											
sp2	32.208607,-103.551109	1/24/22		2'	0.15	374											
sp2	32.208607,-103.551109	1/24/22		3'	0.14	349.00											
sp2	32.208607,-103.551109	1/24/22		4'	0.15	374.00											
sp2	32.208607,-103.551109	1/24/22	H220261-03	2'			64	<55.1	<55.1	<0.300	<0.050	<0.050	<0.050	<0.150	<10.0	45.1	<10.0
sp2	32.208607,-103.551109	1/24/22	H220261-04	4'			488	<66.7	<66.7	<0.300	<0.050	<0.050	<0.050	<0.150	<10.0	56.7	<10.0
sp3	32.209199,-103.551193	1/24/22		Surf	0.20	499											
sp3	32.209199,-103.551193	1/24/22		1'	0.14	349											
sp3	32.209199,-103.551193	1/24/22		2'	0.09	224											
sp3	32.209199,-103.551193	1/24/22		3'	0.13	324											
sp3	32.209199,-103.551193	1/24/22		4'	0.13	324											
sp3	32.209199,-103.551193	1/24/22	H220261-05	2'			16	<20	<20	<0.300	<0.050	<0.050	<0.050	<0.150	<10.0	<10.0	<10.0
sp3	32.209199,-103.551193	1/24/22	H220261-06	4'			32	<20	<20	<0.300	<0.050	<0.050	<0.050	<0.150	<10.0	<10.0	<10.0
sp4	32.209199,-103.551193	1/24/22		Surf	0.69	1724											
sp4	32.209199,-103.551193	1/24/22		1'	0.45	1124											
sp4	32.209199,-103.551193	1/24/22		2'	0.28	699											
sp4	32.209199,-103.551193	1/24/22		3'	0.14	349											
sp4	32.209199,-103.551193	1/24/22		4'	0.11	274											
sp4	32.209199,-103.551193	1/24/22	H220261-07	2'			656	<20	<20	<0.300	<0.050	<0.050	<0.050	<0.150	<10.0	<10.0	<10.0
sp4	32.209199,-103.551193	1/24/22	H220261-08	4'			64	<20	<20	<0.300	<0.050	<0.050	<0.050	<0.150	<10.0	<10.0	<10.0
sp5	32.209217,-103.551156	1/24/22		Surf	1.20	2999											
sp5	32.209217,-103.551156	1/24/22		1'	0.28	699											
sp5	32.209217,-103.551156	1/24/22		2'	0.28	699											
sp5	32.209217,-103.551156	1/24/22		3'	0.15	374											
sp5	32.209217,-103.551156	1/24/22		4'	0.15	374											
sp5	32.209217,-103.551156	1/24/22	H220261-09	2'			192	<20	<20	<0.300	<0.050	<0.050	<0.050	<0.150	<10.0	<10.0	<10.0
sp5	32.209217,-103.551156	1/24/22	H220261-10	4'			32.0	<20	<20	<0.300	<0.050	<0.050	<0.050	<0.150	<10.0	<10.0	<10.0
comp		1/24/22	H220261-11	comp			<16.0	<20	<20	<0.300	<0.050	<0.050	<0.050	<0.150	<10.0	<10.0	<10.0



**District I**

1625 N. French Dr., Hobbs, NM 88240  
Phone:(575) 393-6161 Fax:(575) 393-0720

**District II**

811 S. First St., Artesia, NM 88210  
Phone:(575) 748-1283 Fax:(575) 748-9720

**District III**

1000 Rio Brazos Rd., Aztec, NM 87410  
Phone:(505) 334-6178 Fax:(505) 334-6170

**District IV**

1220 S. St Francis Dr., Santa Fe, NM 87505  
Phone:(505) 476-3470 Fax:(505) 476-3462

**State of New Mexico**  
**Energy, Minerals and Natural Resources**  
**Oil Conservation Division**  
**1220 S. St Francis Dr.**  
**Santa Fe, NM 87505**

COMMENTS

Action 85132

**COMMENTS**

Operator: OWL SWD OPERATING, LLC 8201 Preston Road Dallas, TX 75225	OGRID: 308339
	Action Number: 85132
	Action Type: [C-147] Water Recycle Short (C-147S)

**COMMENTS**

Created By	Comment	Comment Date
vvenegas	NMOCD has reviewed the closure report submitted by OWL SWD OPERATING, LLC [308339] on 03/01/2022, for 1RF-451 - NDBL Recycle in D-23-24S-33E, Lea County, New Mexico. The closure report has been approved. The permit associated with 1RF-451 - NDBL Recycle is closed. Please note that according to 19.15.34.14.G: The re-vegetation and reclamation obligations imposed by federal, state trust land or tribal agencies on lands managed by those agencies shall supersede these provisions and govern the obligations of any operator subject to those provisions, provided that the other requirements provide equal or better protection of fresh water, human health and the environment. As stated by 19.15.34.14.H, the operator shall notify the Division when reclamation and re-vegetation are complete.	3/16/2022

**District I**

1625 N. French Dr., Hobbs, NM 88240  
 Phone:(575) 393-6161 Fax:(575) 393-0720

**District II**

811 S. First St., Artesia, NM 88210  
 Phone:(575) 748-1283 Fax:(575) 748-9720

**District III**

1000 Rio Brazos Rd., Aztec, NM 87410  
 Phone:(505) 334-6178 Fax:(505) 334-6170

**District IV**

1220 S. St Francis Dr., Santa Fe, NM 87505  
 Phone:(505) 476-3470 Fax:(505) 476-3462

**State of New Mexico**  
**Energy, Minerals and Natural Resources**  
**Oil Conservation Division**  
**1220 S. St Francis Dr.**  
**Santa Fe, NM 87505**

CONDITIONS

Action 85132

**CONDITIONS**

Operator: OWL SWD OPERATING, LLC 8201 Preston Road Dallas, TX 75225	OGRID: 308339
	Action Number: 85132
	Action Type: [C-147] Water Recycle Short (C-147S)

**CONDITIONS**

Created By	Condition	Condition Date
vvenegas	NMOCD has reviewed the closure report submitted by OWL SWD OPERATING, LLC [308339] on 03/01/2022, for 1RF-451 - NDBL Recycle in D-23-24S-33E, Lea County, New Mexico. The closure report has been approved. The permit associated with 1RF-451 - NDBL Recycle is closed. Please note that according to 19.15.34.14.G: The re-vegetation and reclamation obligations imposed by federal, state trust land or tribal agencies on lands managed by those agencies shall supersede these provisions and govern the obligations of any operator subject to those provisions, provided that the other requirements provide equal or better protection of fresh water, human health and the environment. As stated by 19.15.34.14.H, the operator shall notify the Division when reclamation and re-vegetation are complete.	3/16/2022