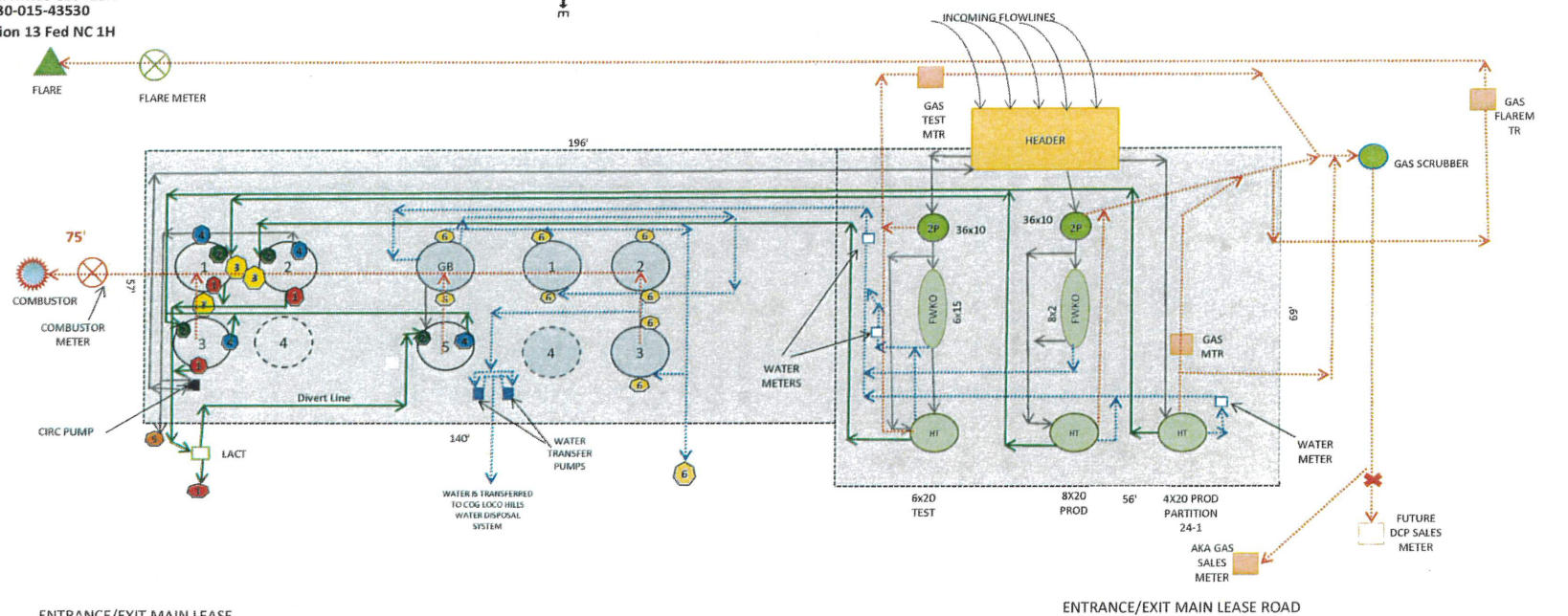


EDDY COUNTY, NM



ENTRANCE/EXIT MAIN LEASE

ENTRANCE/EXIT MAIN LEASE ROAD



Mack Energy Corporation
 EDDY COUNTY, NM
 PARTITION FEDERAL BATTERY
 T 175, R 31E, SEC 24, UNIT G, SWNE
 1395' FNL, 2550' FEL
 LEASE: NMLC-029415A

ATTACHMENT TO SITE FACILITY DIAGRAM

General sealing of valves, sales by tank guage

Production Phase:

Load Line Valves sealed closed. Fill valve to tank that is in production will be open.






Equalizer valve to tank that is in production will be open. Circulation valves will be opened as necessary, then resealed.

BS&W Load Line valve will be sealed at all times, unless cleaning tanks, then resealed once tank maintenance is complete.

Sales Phase:

The tank from which sales are being made will be isolated by sealing closed the fill line valve, circulating valve, and the equalizer valve during sales and opening the sales valve. Upon completion of the sale, the sales valve will be resealed.

Sales by truck will be by tank gauge.

	<u>VALVE</u>	<u>PRODUCTION PHASE</u>	<u>SALES PHASE</u>	<u>CIRCULATING</u>	<u>NOTE</u>
	LOAD LINE VALVE	CLOSED	OPEN	CLOSED	Sealed after Lact
	PRODUCTION FILL LINE VALVE	OPEN OR CLOSED	CLOSED	CLOSED OR OPEN	
	EQUALIZER LINE VALVE	OPEN	CLOSED	CLOSED OR OPEN	
	CIRCULATING LINE VALVE	OPEN OR CLOSED	CLOSED	OPEN	
	BS&W LOAD LINE VALVE	CLOSED	CLOSED	CLOSED	OPEN FOR TANK MAINTENANCE, RESEALED ONCE MAINTENANCE IS COMPLETE
	WATER LINE VALVE	OPEN	NA	NA	WATER TANKS ARE ISOLATED FROM OIL PRODUCTION TANKS

PARTITION BATTERY

PARTITION FEDERAL 1	30--015-39061
PARTITION 13 FED NC 1H	30-015-43530
PARTITION 13 FED MD 1H	30-015-43552

New Wells - Not Drilled

Partition 24 Fed HE 1H	30-015-44903
Partition 24 Fed AD 1H	30-015-44931
Partition 24 Fed IL 1H	30-015-44932
Nosler 24 Fed PM 1H	

A wide-angle photograph of an industrial site, likely a water treatment or storage facility, set in a flat, arid desert landscape under a clear blue sky. In the middle ground, there are several large, cylindrical storage tanks of varying colors (tan, grey, and green). These tanks are interconnected by a network of metal pipes and walkways. To the left, there are utility poles and some smaller structures. The foreground is a vast, flat, reddish-brown dirt area. The text "Partition Federal" is superimposed in large, black, sans-serif font across the center of the image.

Partition Federal

District I
1625 N. French Dr., Hobbs, NM 88240
Phone:(575) 393-6161 Fax:(575) 393-0720
District II
811 S. First St., Artesia, NM 88210
Phone:(575) 748-1283 Fax:(575) 748-9720
District III
1000 Rio Brazos Rd., Aztec, NM 87410
Phone:(505) 334-6178 Fax:(505) 334-6170
District IV
1220 S. St Francis Dr., Santa Fe, NM 87505
Phone:(505) 476-3470 Fax:(505) 476-3462

State of New Mexico
Energy, Minerals and Natural Resources
Oil Conservation Division
1220 S. St Francis Dr.
Santa Fe, NM 87505

QUESTIONS

Action 100197

QUESTIONS

Operator: MACK ENERGY CORP P.O. Box 960 Artesia, NM 882110960	OGRID: 13837
	Action Number: 100197
	Action Type: [UF-FAC] TB Registration (TB-REG)

QUESTIONS

Facility Details	
<i>Please answer all of the questions in this group.</i>	
Name of the facility	Partition Federal Battery
Date the facility was opened	03/07/2018
Depth to ground water, if known	Not answered.

Verification	
Does the operator have other facilities with a matching name	No
Are there other facilites located within approximately 50 feet	No

District I
1625 N. French Dr., Hobbs, NM 88240
Phone:(575) 393-6161 Fax:(575) 393-0720
District II
811 S. First St., Artesia, NM 88210
Phone:(575) 748-1283 Fax:(575) 748-9720
District III
1000 Rio Brazos Rd., Aztec, NM 87410
Phone:(505) 334-6178 Fax:(505) 334-6170
District IV
1220 S. St Francis Dr., Santa Fe, NM 87505
Phone:(505) 476-3470 Fax:(505) 476-3462

State of New Mexico
Energy, Minerals and Natural Resources
Oil Conservation Division
1220 S. St Francis Dr.
Santa Fe, NM 87505

ACKNOWLEDGMENTS

Action 100197

ACKNOWLEDGMENTS

Operator: MACK ENERGY CORP P.O. Box 960 Artesia, NM 882110960	OGRID: 13837
	Action Number: 100197
	Action Type: [UF-FAC] TB Registration (TB-REG)

ACKNOWLEDGMENTS

<input checked="" type="checkbox"/>	I certify that I am authorized to register a facility on behalf of the responsible operator.
<input checked="" type="checkbox"/>	I certify that I will notify OCD of any changes of ownership for this facility.
<input checked="" type="checkbox"/>	I certify that I will notify OCD when this facility is closed.