

Drone Imagery Date: Oct 5, 2023



U.S. Feet
Scale 1"=60'

Rev. 4 - Issued for Information Preliminary Version 0	Apr. 3, 2023	Drafted by: LaVerne Woroschuk (Elite Optz.)
		Reviewed by: Ramon Barrera (Elite Optz.)
		Approved by: (Caza Petro.)
Rev. 5 - Issued for Information Preliminary Version 0	June 12, 2023	Drafted by: Marcos Barriga (Elite Optz.)
		Reviewed by: (Caza Petro.)
		Approved by: (Caza Petro.)
Rev. 6 - Issued for Information Preliminary Version 5	June 20, 2024	Drafted by: Marcos Barriga (Elite Optz.)
		Reviewed by: LaVerne Woroschuk (Elite Optz.)
		Approved by: (Caza Petro.)
Job. #: 21-EliteOptz-0003-Rev6		Page 1 of 9

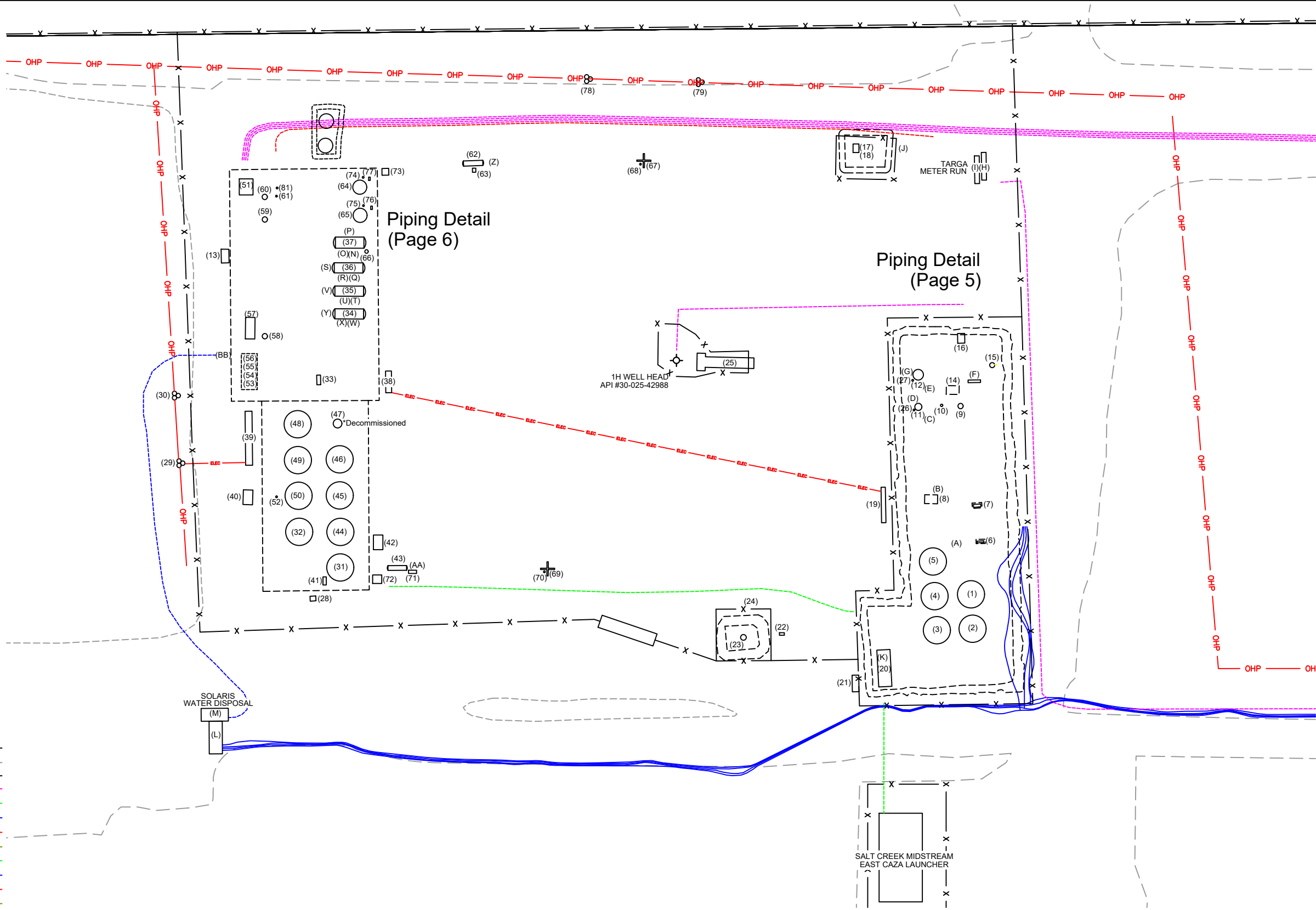
Aerial As-Built Overview of
Caza Petroleum, LLC.
Eagle Claw Federal Com
Wells 1H, 2H, 3H, 4H, 5H, 6H
Tank Batteries
BLM Lease Number: NMNM132945



Disclaimer: This drawing is intended for Caza Petroleum, LLC. internal purposes only and is not to be relied upon as a boundary survey or to establish real property interests. Survey information shown on this drawing was gathered between the dates of: Dec. 29, 2020 and Oct. 5, 2023. Survey information was collected using a combination of GNSS observations and geo-referenced aerial drone imagery when required. Observations refer to: NAD83 (2011) Datum, New Mexico State Plane Coordinate System, East Zone (3001), US Survey Feet, CSF=0.99990909. This drawing includes additional information that was collected from various sources including first hand observations, walk-through photos when applicable and third party information as well as information provided by Caza Petroleum, LLC. Caza Petroleum, LLC. is to verify the accuracy of all information as presented on this drawing. Elite Optimization, LP. is not responsible for design by engineer of records, erection or operation of any facilities represented by this drawing. This drawing is not an official engineering drawing or land survey drawing; this drawing is not to be used for construction.



Equipment Layout Plan up to date as of: Oct. 5, 2023



LEGEND:

Wellhead is shown thus:

Berms/Containments/Skids are shown thus:

Pad Edge is shown thus:

Fences are shown thus:

As-built UG Flowline is shown thus:

As-built UG Oil Line is shown thus:

As-built UG Water Line is shown thus:

As-built UG Gas Line is shown thus:

As-built UG Oil & Water Line is shown thus:

As-built AG Oil Line is shown thus:

As-built AG Water Line is shown thus:

As-built AG Gas Line is shown thus:

As-built AG Oil & Water Line is shown thus:

U.S. Feet
Scale 1"=60'

Rev. 4 - Issued for Information Preliminary Version 0	Apr. 3, 2023	Drafted by: LaVerne Woroschuk (Elite Optz.)	
		Reviewed by: Ramon Barrera (Elite Optz.)	
		Approved by: (Caza Petro.)	
Rev. 5 - Issued for Information Preliminary Version 0	June 12, 2023	Drafted by: Marcos Barriga (Elite Optz.)	
		Reviewed by: (Caza Petro.)	
		Approved by: (Caza Petro.)	
Rev. 6 - Issued for Information Preliminary Version 5	June 20, 2024	Drafted by: Marcos Barriga (Elite Optz.)	
		Reviewed by: LaVerne Woroschuk (Elite Optz.)	
		Approved by: (Caza Petro.)	

Job. #: 21-EliteOptz-0003-Rev6

Page 2 of 9

As-Built Equipment Layout Plan for
Caza Petroleum, LLC.
Eagle Claw Federal Com
Wells 1H, 2H, 3H, 4H, 5H, 6H
Tank Batteries
BLM Lease Number: NMNM132945

Disclaimer: This drawing is intended for Caza Petroleum, LLC. internal purposes only and is not to be relied upon as a boundary survey or to establish real property interests. Survey information shown on this drawing was gathered between the dates of: Dec. 29, 2020 and Oct. 5, 2023. Survey information was collected using a combination of GNSS observations and geo-referenced aerial drone imagery when required. Observations refer to: NAD83 (2011) Datum, New Mexico State Plane Coordinate System, East Zone (3001), US Survey Feet, CSF=0.99990909. This drawing includes additional information that was collected from various sources including first hand observations, walk-through photos when applicable and third party information as well as information provided by Caza Petroleum, LLC. Caza Petroleum, LLC. is to verify the accuracy of all information as presented on this drawing. Elite Optimization, LP. is not responsible for design by engineer of records, erection or operation of any facilities represented by this drawing. This drawing is not an official engineering drawing or land survey drawing; this drawing is not to be used for construction.

Released to Imaging: 10/14/2024 1:10:00 PM

Ref.	Piece	Year	Manufacturer	Serial No.	Model No.	Dimensions	Additional Info.	Long.	Lat.
1	Oil Tank	2016	Azteca Fabrication	CA1831	--	15.5 x 16 - 500 BBL	--	-103.486026	32.608696
2	Oil Tank	2013	Edge Manufacturing	ST1206-P	--	15.5 x 16 - 500 BBL	DP 8 oz	-103.486022	32.608642
3	Bad Oil Tank	2014	Edge Manufacturing	API-9135	--	15.5 x 16 - 500 BBL	DP 8 oz	-103.486091	32.608640
4	Test Oil Tank	2016	Azteca Fabrication	CA1832	--	15.5 x 16 - 500 BBL	--	-103.486093	32.608694
5	Water Tank	2014	Edge Manufacturing	T-1037	--	15.5 x 16 - 500 BBL	DP 8 oz	-103.486096	32.608751
6	Water Pump	--	Centripump	7618DR	MTX	--	1.5x3-13, 50HP	-103.486004	32.608781
7	Recycle Pump	2017	Gorman-Rupp	1747657	GMS1 1/2GH3-B /S2	--	--	-103.486012	32.608837
8	VRU	2014	Platinum	PVR-1875	--	--	--	-103.486101	32.608846
9	Vert. Separator	2016	Azteca	CA1808	--	--	MAWP 1440 PSI at 150F, 1H Well	-103.486044	32.608993
10	Fuel Pot	--	Manchester	N/A	--	--	--	-103.486079	32.608995
11	Vert. Heater Treater	2014	Edge Manufacturing	EMT 288-2	--	4 x 20	WP 75 PSI, 1H Well	-103.486123	32.608993
12	Vert. Heater Treater	2014	Edge Manufacturing	EMT 06761	--	6 x 20	WP 75 PSI, 2H Well	-103.486122	32.609040
13	Vert. Separator	2018	TriPoint	RSA-070	--	30 x 10	2-PH, MAWP 250 PSI, 2H Well	-103.486080	32.609043
14	VRU	--	Platinum	1160	--	--	--	-103.486057	32.609019
15	Flare Scrubber	2012	Smith Industries	8065-K	--	30 x 10	2-PH, WP 125 PSI	-103.485985	32.609058
16	Inlet Header	--	--	N/A	--	--	--	-103.486042	32.609098
17	Flare	--	--	None	--	--	--	-103.486234	32.609394
18	Flare Control	--	Ignition Management System / Platinum Control	2019052800020	Edge-600	--	--	-103.486248	32.609375
19	Panel Rack	--	--	N/A	--	--	--	-103.486183	32.608840
20	LACT	2020	Angus Measurement	30992-5/35596	--	--	--	-103.486186	32.608581
21	LACT Panel	--	--	--	--	--	--	-103.486254	32.608562
22	Jatco Pot	--	Jatco Inc.	N/A	J-5000CX	--	--	-103.486377	32.608639
23	Combustor	--	FlameCo	1708-890	--	--	--	-103.486459	32.608641
24	Combustor Ignition Control	--	Ignition Management System / Platinum Control	2019022000107	Edge-600	--	--	-103.486447	32.608673
25	Pumping Unit	2019	Jack Artificial Machinery	SLS19-1518	C1280D-365-240TH	--	--	-103.486496	32.609068
26	Fuel Pot	--	--	--	--	--	Heater Treater EMT 288-2	-103.486133	32.608987
27	Fuel Pot	--	--	--	--	--	Heater Treater EMT 6761	-103.486134	32.609035
28	Oxygen Tank	--	--	--	--	--	--	-103.487240	32.608708
29	Transformer (No Meter)	--	--	No Meter	--	--	(3) 100 kVa	-103.487478	32.608912
30	Transformer (No Meter)	--	--	No Meter	--	--	(3) 100 kVa	-103.487503	32.609019
31	Oil Tank	2021	Petrosmith	API-19020	--	15.5 x 30 - 1000 BBL	DP 16 oz	-103.487193	32.608746
32	Water Tank	2021	Petrosmith	API-19022	--	15.5 x 30 - 1000 BBL	DP 16 oz	-103.487271	32.608804
33	Recycle Pump	2021	Odessa Pumps	670718	--	--	4x3-10, 15 HP	-103.487232	32.609030
34	Horz. Test Separator	2021	Pitts	NC245	--	72 x 15	MAWP 250 psi	-103.487172	32.609146
35	Horz. Test Separator	2021	Pitts	NC 246	--	72 x 15	MAWP 250 PSI	-103.487172	32.609181
36	Horz. Test Separator	2021	Pitts	NC 249	--	72 x 15	MAWP 250 PSI	-103.487172	32.609218
37	Horz. Test Separator	2022	Edge Manufacturing	E0446	--	6 x 15	WP 250 PSI, well 4	-103.487175	32.609256
38	Panel Rack	--	--	--	--	--	--	-103.487102	32.609038
39	Panel Rack	--	--	--	--	--	--	-103.487361	32.608954
40	VRU	--	Platinum	PVR-2374	--	--	PVR-2374	-103.487361	32.608858
41	Transfer Pump	--	Centripump	20820-DR	MTX	--	3x4-10, 10 HP	-103.487223	32.608726
42	VRU	2022	Platinum	PVR-2387	--	--	--	-103.487120	32.608789
43	Horz. Flare Scrubber	2021	Permian Tank	F-37153	--	30 x 10	WP 50 PSI	-103.487089	32.608745
44	Oil Tank	2021	Petrosmith	API-19019	--	15.5 x 30 - 1000 BBL	DP 16 oz	-103.487193	32.608805
45	Oil Tank	2021	PermianLide	0S255234	--	15.5 x 30 - 1000 BBL	DP 16 oz	-103.487194	32.608860
46	Oil Tank	2021	PermianLide	0S265161	--	15.5 x 30 - 1000 BBL	DP 16 oz	-103.487196	32.608916
47	VRT *Decommissioned	2021	Permian Tank	F8803	--	72 x 40	WP 125 PSI	-103.487199	32.608972
48	Gunbarrel	2021	Permian Tank	0S262971	--	15.5 x 35 - 1150 BBL	DP 16 oz	-103.487271	32.608973
49	Bad Oil Tank	2021	PermianLide	0S260921	--	15.5 x 30 - 1000 BBL	DP 16 oz	-103.487271	32.608915
50	Water Tank	2021	PermianLide	0S261101	--	15.5 x 30 - 1000 BBL	DP 16 oz	-103.487270	32.608860
51	Inlet Header	--	--	--	--	--	--	-103.487361	32.609348
52	Fuel Pot	--	Manchester	N/A	--	--	--	-103.487307	32.608861
53	Transfer Pump	--	Centripump	50322-DR	MTX	--	3x4-10, 75 HP	-103.487350	32.609041
54	Transfer Pump	--	Centripump	50022-DR	MTX	--	1.5x3-10, 40 HP	-103.487369	32.609041

Rev. 4 - Issued for Information
Preliminary Version 0

Apr. 3, 2023

Drafted by: LaVerne Woroschuk
(Elite Optz.)

Reviewed by: Ramon Barrera
(Elite Optz.)

Approved by: (Caza Petro.)

Rev. 5 - Issued for Information
Preliminary Version 0

June 12, 2023

Drafted by: Marcos Barriga
(Elite Optz.)

Reviewed by: (Caza Petro.)

Approved by: (Caza Petro.)

Rev. 6 - Issued for Information
Preliminary Version 5

June 20, 2024

Drafted by: Marcos Barriga
(Elite Optz.)


Reviewed by: LaVerne Woroschuk
(Elite Optz.)

Approved by: (Caza Petro.)

Job. #: 21-EliteOptz-0003-Rev6

Page 3 of 9

As-Built Equipment List for
Caza Petroleum, LLC.
Eagle Claw Federal Com
Wells 1H, 2H, 3H, 4H, 5H, 6H
Tank Batteries
BLM Lease Number: NMNM132945




Disclaimer: This drawing is intended for Caza Petroleum, LLC. internal purposes only and is not to be relied upon as a boundary survey or to establish real property interests. Survey information shown on this drawing was gathered between the dates of: Dec. 29, 2020 and Oct. 5, 2023.

Survey information was collected using a combination of GNSS observations and geo-referenced aerial drone imagery when required. Observations refer to: NAD83 (2011) Datum, New Mexico State Plane Coordinate System, East Zone (3001), US Survey Feet, CSF=0.99990909

This drawing includes additional information that was collected from various sources including first hand observations, walk-through photos when applicable and third party information as well as information provided by Caza Petroleum, LLC.

Caza Petroleum, LLC. is to verify the accuracy of all information as presented on this drawing. Elite Optimization, LP. is not responsible for design by engineer of records, erection or operation of any facilities represented by this drawing.

This drawing is not an official engineering drawing or land survey drawing; this drawing is not to be used for construction.



(Paper: 11 x 17)

Received by OCD: 10/14/2024 12:35:11 PM

Released to Imaging: 10/14/2024 1:10:00 PM

Ref.	Piece	Year	Manufacturer	Serial No.	Model No.	Dimensions	Additional Info.	Long.	Lat.
55	Charge Pump	--	Centripump	50222-DR	MTX	--	4x6-13, 10 HP	-103.487368	32.609062
56	Charge Pump	--	Centripump	49922-DR	MTX	--	4x6-13, 15 HP	-103.487348	32.609062
57	VRU	--	Platinum	PVR-2427	--	--	--	-103.487354	32.609119
58	Scrubber	2022	Pessco	2345	--	36 x 10	WP 250 PSI	-103.487329	32.609111
59	Scrubber	2022	Pessco	2344	--	36 x 10	WP 250 PSI	-103.487328	32.609294
60	Scrubber	2022	Pessco	2343	--	36 x 10	WP 250 PSI	-103.487328	32.609330
61	Fuel Pot	--	Manchester	N/A	--	--	Scrubber #2343	-103.487307	32.609330
62	Horz. Flare Scrubber	2015	Caughlin Equipment	CEC-R206-15	--	--	MAWP 1440 PSI at 120F	-103.486942	32.609379
63	Reduction Pump	--	Gorman Rupp	1777127	GMS1 1/2GH3-B /S2	--	--	-103.486941	32.609367
64	Vert. Heater Treater	2022	Pessco	2308	--	8 x 20	WP 125 PSI	-103.487153	32.609344
65	Vert. Heater Treater	2022	Pessco	2080	--	8 x 20	WP 125 PSI	-103.487153	32.609300
66	Fuel Pot	--	Manchester	N/A	--	--	Horz. Test Sep. E0446	-103.487141	32.609243
67	Flare	2022	FlareTech	22-1161-2	FT-PMI-PH	6"VSS x 40' Tall		-103.486625	32.609381
68	Fuel Gas Scrubber	2021	Dragon	171982	--	10-3/4"OD x 16-1/2"	MAWP 250 PSI	-103.486637	32.609382
69	Flare	2022	FlareTech	22-1161-1	--	6"x18"SL x 30' Tall	--	-103.486812	32.608749
70	Fuel Pot	--	Manchester	N/A	--	--	HP Flare 22-1161-1	-103.486813	32.608732
71	Reduction Pump	--	Gorman Rupp	1780298	GMS1 1/2GH3-B /S2	--	--	-103.487066	32.608740
72	Flare Control	2022	FlareTech	22-1161-1	--	--	--	-103.487131	32.608719
73	Flare Control	2022	Flaretech	22-1161-2	FT-PMI-CP-PH	--	--	-103.487106	32.609368
74	Fuel Pot	--	--	Not Available	--	--	Vert Heater Treater 2308	-103.487143	32.609361
75	Fuel Pot	--	--	Not Available	--	--	Vert. Heater Treater 2080	-103.487141	32.609316
76	Control Box	--	Platinum	2022072200050	Platinum-600	--	Vert Heater Treater 02308	-103.487134	32.609357
77	Control Box	--	Platinum	2022072200033	Platinum-600	--	Vert. Heater Treater 2080	-103.487130	32.609310
78	Transformer (No Meter)	--	--	No Meter	--	--	(3) 37.5 kVa	-103.486733	32.609520
79	Transformer (No Meter)	--	--	No Meter	--	--	(3) 100 kVa	-103.486525	32.609515
80	Compressor	--	Ingersol Rand	CBV900793	--	--	--	-103.487404	32.609237
81	Fuel Pot	--	--	--	--	--	--	-103.487298	32.609351
A	Meter - Water	2020	Rosemount	14799362	8732EMT2M1KUM4	--	--	-103.486054	32.608786
B	Meter - VRU	2020	Turbines Inc.	F16495	--	--	--	-103.486095	32.608859
C	Meter - Water	--	Endress + Hauser	P9075416000	Promag300	--	--	-103.486099	32.608973
D	Meter - Oil	2019	Micromotion	3445545	--	--	--	-103.486128	32.608999
E	Meter - Water	--	NuFlo	12175591538	--	--	--	-103.486110	32.609013
F	Meter - Gas	--	Canalta	D0201546	--	--	ABB S/N T184342780	-103.486021	32.609031
G	Meter - Oil	--	Endress + Hauser	SA041416000	Promass300	--	--	-103.486128	32.609054
H	Meter - Gas	--	Flowzone	14017066-1	--	--	ABB S/N T134246199	-103.485992	32.609367
I	Meter - Gas	--	Daniel	150088059	--	--	ABB S/N T172080382	-103.486010	32.609363
J	Meter - Flare	--	Turbines Inc.	2201195	F103-P-AH-CH-HGL-IB-IG-OG-PB-PX-XN-ZU-1TO	--	--	-103.486146	32.609399
K	Meter - LACT	--	Endress + Hauser	NA04B616000	Promass300	--	--	-103.486188	32.608599
L	Meter - Water	--	Endress + Hauser	N7091716000	Promag300	--	Solaris Water Disposal	-103.487420	32.608515
M	Meter - Water	--	Endress + Hauser	S8006716000	Promag 300	--	Solaris Water Disposal	-103.487433	32.608491
N	Meter - Water	--	NuFlo	12175696406	--	--	(Test Sep. P0446)	-103.487164	32.609245
O	Meter - Oil	--	Endress + Hauser	T302EB16000	Promass 300	--	(Test Sep. P0446)	-103.487173	32.609244
P	Meter - Gas	--	RJ Single	8924	--	--	ABB S/N T224484715 (Test Sep. P0446)	-103.487170	32.609270
Q	Meter - Water	--	NuFlo	12180499917	--	--	(Test Sep. NC 249)	-103.487162	32.609205
R	Meter - Oil	--	Endress + Hauser	T405ES16000	Promass 300	--	(Test Sep. NC 249)	-103.487170	32.609205
S	Meter - Gas	--	Precision Flow	SF211729	--	--	ABB T224484717, (Test Sep. NC 249)	-103.487220	32.609227
T	Meter - Water	--	NuFlo	1218499917	--	--	(Test Sep. NC 246)	-103.487161	32.609168
U	Meter - Oil	--	Endress + Hauser	T4015916000	Promass 300	--	(Test Sep. NC 246)	-103.487169	32.609167
V	Meter - Gas	--	RJ Single	8228	--	--	ABB T224484724 (Test Sep. NC 246)	-103.487218	32.609191
W	Meter - Water	--	NuFlo	12122091689	--	--	(Test Sep. NC-245)	-103.487162	32.609133
X	Meter - Oil	--	Endress + Hauser	T4015416000	Promass 300	--	(Test Sep. NC 245)	-103.487172	32.609132
Y	Meter - Gas	--	RJ Single	8087	--	--	ABB T223980852 (Test Sep.NC-245)	-103.487218	32.609156
Z	Meter - HP Flare	2022	Sierra	314322	640i-VT-2-L13-M0-E2-P2-V4-DD-0-8-99-MB-OMIX	--	--	-103.486907	32.609381
AA	Meter - LP Flare	2022	Sierra	314339	640i-VT-2-L13-M0-E2-P2-V4-DD-0-8-99-MB-OMIX	--	--	-103.487056	32.608747
BB	Meter - Water	--	Turbines Inc.	2239544	E112-P-AH-CH-HAA-IB-OT-PB-PX-XD-ZB-ZL-ZU-1TO	--	--	-103.487388	32.609081

Rev. 4 - Issued for Information Preliminary Version 0

Apr. 3, 2023

Drafted by: LaVerne Woroschuk (Elite Optz.)

Reviewed by: Ramon Barrera (Elite Optz.)

Approved by: (Caza Petro.)

Rev. 5 - Issued for Information Preliminary Version 0

June 12, 2023

Drafted by: Marcos Barriga (Elite Optz.)

Reviewed by: (Caza Petro.)

Approved by: (Caza Petro.)

Rev. 6 - Issued for Information Preliminary Version 5

June 20, 2024

Drafted by: Marcos Barriga (Elite Optz.)

Reviewed by: LaVerne Woroschuk (Elite Optz.)

Approved by: (Caza Petro.)


Job. #: 21-EliteOptz-0003-Rev6

Page 4 of 9

As-Built Equipment & Meter List for Caza Petroleum, LLC. Eagle Claw Federal Com Wells 1H, 2H, 3H, 4H, 5H, 6H Tank Batteries BLM Lease Number: NMNM132945



Disclaimer: This drawing is intended for Caza Petroleum, LLC. internal purposes only and is not to be relied upon as a boundary survey or to establish real property interests. Survey information shown on this drawing was gathered between the dates of: Dec. 29, 2020 and Oct. 5, 2023. Survey information was collected using a combination of GNSS observations and geo-referenced aerial drone imagery when required. Observations refer to: NAD83 (2011) Datum, New Mexico State Plane Coordinate System, East Zone (3001), US Survey Feet, CSF=0.99990909 This drawing includes additional information that was collected from various sources including first hand observations, walk-through photos when applicable and third party information as well as information provided by Caza Petroleum, LLC. Caza Petroleum, LLC. is to verify the accuracy of all information as presented on this drawing. Elite Optimization, LP. is not responsible for design by engineer of records, erection or operation of any facilities represented by this drawing. This drawing is not an official engineering drawing or land survey drawing; this drawing is not to be used for construction.

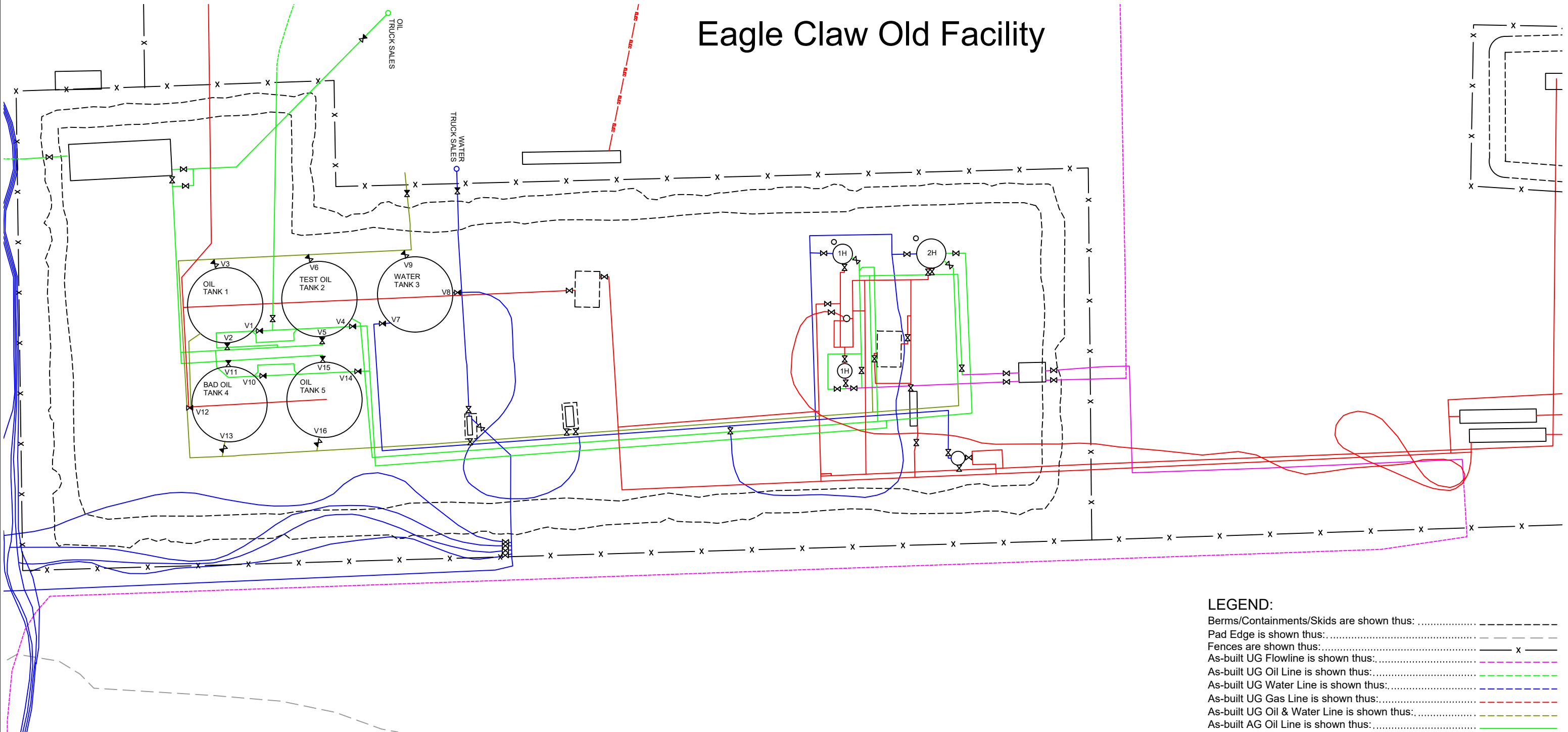


Received by OCD: 10/14/2024 12:35:11 PM

Released to Imaging: 10/14/2024 1:10:00 PM

(Paper: 11 x 17)

Piping Detail up to date as of: Oct. 5, 2023



Eagle Claw Old Facility

- LEGEND:**
- Berms/Containments/Skids are shown thus: -----
 - Pad Edge is shown thus: ----- x -----
 - Fences are shown thus: -----
 - As-built UG Flowline is shown thus: -----
 - As-built UG Oil Line is shown thus: -----
 - As-built UG Water Line is shown thus: -----
 - As-built UG Gas Line is shown thus: -----
 - As-built UG Oil & Water Line is shown thus: -----
 - As-built AG Oil Line is shown thus: -----
 - As-built AG Water Line is shown thus: -----
 - As-built AG Gas Line is shown thus: -----
 - As-built AG Oil & Water Line is shown thus: -----
 - Valve Open is shown thus: ⌘
 - Valve Closed is shown thus: ⌘
 - Valve that varies Open/Closed is shown thus: ⌘

U.S. Feet
Scale 1"=20'

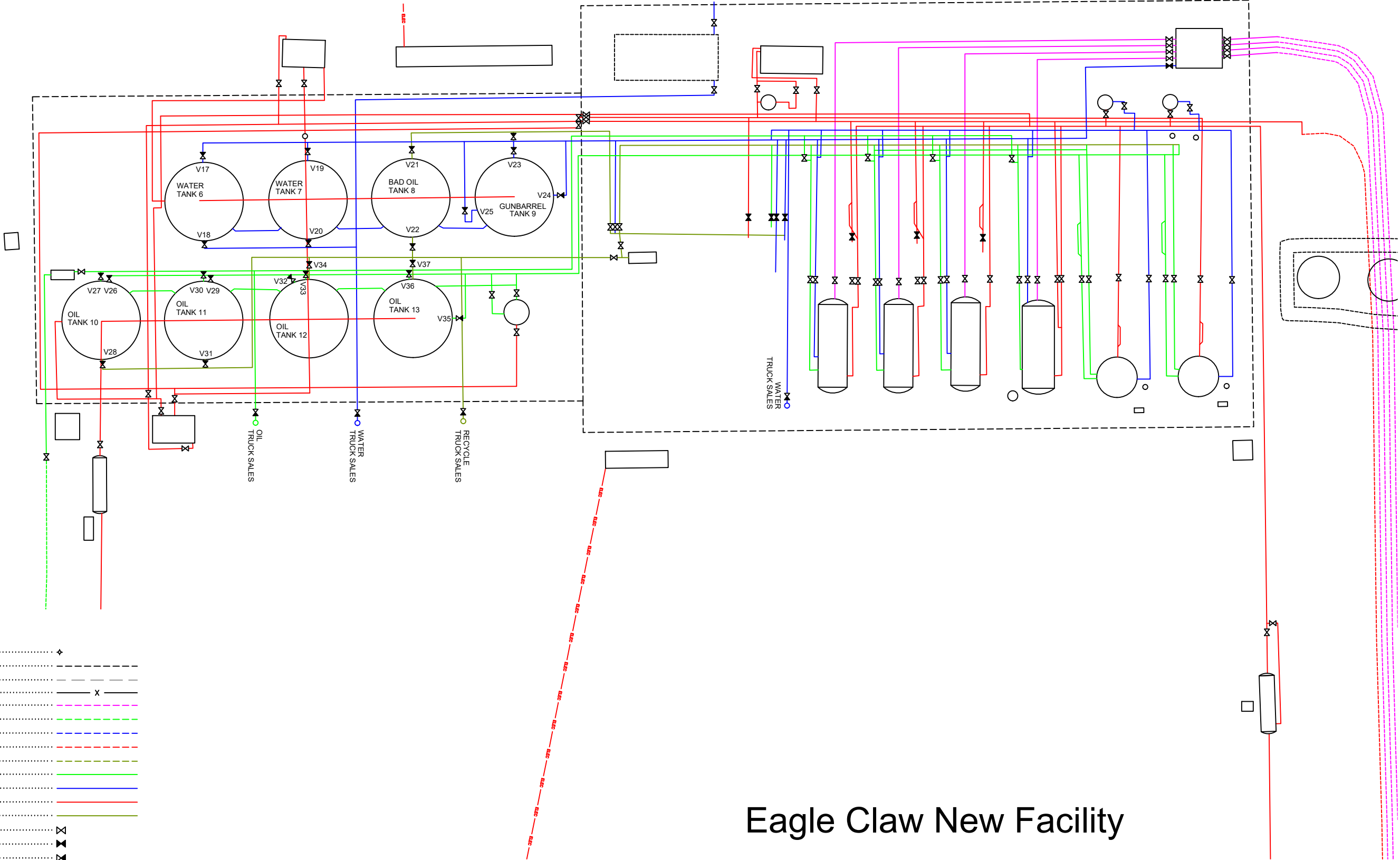
Rev. 4 - Issued for Information Preliminary Version 0	Apr. 3, 2023	Drafted by: LaVerne Woroschuk (Elite Optz.)	Reviewed by: Ramon Barrera (Elite Optz.)
Rev. 5 - Issued for Information Preliminary Version 0	June 12, 2023	Drafted by: Marcos Barriga (Elite Optz.)	Reviewed by: Marcos Barriga (Caza Petro.)
Rev. 6 - Issued for Information Preliminary Version 5	June 20, 2024	Drafted by: Marcos Barriga (Elite Optz.)	Reviewed by: LaVerne Woroschuk (Elite Optz.)
Job. #: 21-EliteOptz-0003-Rev6		Page 5 of 9	

As-Built Piping Detail (1H & 2H)
Caza Petroleum, LLC.
Eagle Claw Federal Com
Wells 1H, 2H Tank Battery
BLM Lease Number: NMNM132945



Disclaimer: This drawing is intended for Caza Petroleum, LLC. internal purposes only and is not to be relied upon as a boundary survey or to establish real property interests. Survey information shown on this drawing was gathered between the dates of: Dec. 29, 2020 and Oct. 5, 2023. Survey information was collected using a combination of GNSS observations and geo-referenced aerial drone imagery when required. Observations refer to: NAD83 (2011) Datum, New Mexico State Plane Coordinate System, East Zone (3001), US Survey Feet, CSF=0.99990909. This drawing includes additional information that was collected from various sources including first hand observations, walk-through photos when applicable and third party information as well as information provided by Caza Petroleum, LLC. Caza Petroleum, LLC. is to verify the accuracy of all information as presented on this drawing. Elite Optimization, LP. is not responsible for design by engineer of records, erection or operation of any facilities represented by this drawing. This drawing is not an official engineering drawing or land survey drawing; this drawing is not to be used for construction.

Piping Detail up to date as of: Oct. 5, 2023



- LEGEND:**
- Wellhead is shown thus:
 - Berms/Containments/Skids are shown thus:
 - Pad Edge is shown thus:
 - Fences are shown thus:
 - As-built UG Flowline is shown thus:
 - As-built UG Oil Line is shown thus:
 - As-built UG Water Line is shown thus:
 - As-built UG Gas Line is shown thus:
 - As-built UG Oil & Water Line is shown thus:
 - As-built AG Oil Line is shown thus:
 - As-built AG Water Line is shown thus:
 - As-built AG Gas Line is shown thus:
 - As-built AG Oil & Water Line is shown thus:
 - Valve Open is shown thus:
 - Valve Closed is shown thus:
 - Valve that varies Open/Closed is shown thus:

Eagle Claw New Facility

U.S. Feet
Scale 1"=20'

Rev. 4 - Issued for Information Preliminary Version 0	Apr. 3, 2023	Drafted by: LaVerne Woroschuk (Elite Optz.)	Reviewed by: Ramon Barrera (Elite Optz.)
Rev. 5 - Issued for Information Preliminary Version 0	June 12, 2023	Drafted by: Marcos Barriga (Elite Optz.)	Approved by: (Caza Petro.)
Rev. 6 - Issued for Information Preliminary Version 5	June 20, 2024	Drafted by: Marcos Barriga (Elite Optz.)	Reviewed by: LaVerne Woroschuk (Elite Optz.)
Job. #: 21-EliteOptz-0003-Rev6		Page 6 of 9	

As-Built Piping Detail (3H, 4H, 5H, 6H)
Caza Petroleum, LLC.
Eagle Claw Federal Com
Wells 3H, 4H, 5H, 6H Tank Battery
BLM Lease Number: NMNM132945



Disclaimer: This drawing is intended for Caza Petroleum, LLC. internal purposes only and is not to be relied upon as a boundary survey or to establish real property interests. Survey information shown on this drawing was gathered between the dates of: Dec. 29, 2020 and Oct. 5, 2023. Survey information was collected using a combination of GNSS observations and geo-referenced aerial drone imagery when required. Observations refer to: NAD83 (2011) Datum, New Mexico State Plane Coordinate System, East Zone (3001), US Survey Feet, CSF=0.99990909. This drawing includes additional information that was collected from various sources including first hand observations, walk-through photos when applicable and third party information as well as information provided by Caza Petroleum, LLC. Caza Petroleum, LLC. is to verify the accuracy of all information as presented on this drawing. Elite Optimization, LP. is not responsible for design by engineer of records, erection or operation of any facilities represented by this drawing. This drawing is not an official engineering drawing or land survey drawing; this drawing is not to be used for construction.



Valve Position Table- Old Facility (1H, 2H Facility)							Valve Position Table - New Facility (3H, 4H, 5H, 6H Facility)						
	Production Phase		Sales Phase		Circulation Phase			Production Phase		Sales Phase		Circulation Phase	
Ref.	Sealed	Open	Sealed	Open	Sealed	Open	Ref.	Sealed	Open	Sealed	Open	Sealed	Open
Oil Tank 1							Water Tank 6						
V1 (Fill)	N	Y	Y	N	N	Y	V17 (Fill)	N	Y	Y	N	N	Y
V2 (Sales)	Y	N	N	Y	Y	N	V18 (Sales)	Y	N	N	Y	Y	N
V3 (Recycle)	Y	N	N	Y	N	Y	Water Tank 7						
Oil Tank 2							V19 (Fill)	N	Y	Y	N	N	Y
V4 (Fill)	N	Y	Y	N	N	Y	V20 (Sales)	Y	N	N	Y	Y	N
V5 (Sales)	Y	N	N	Y	Y	N	Bad Oil Tank 8						
V6 (Recycle)	Y	N	N	Y	N	Y	V21 (Recycle)	Y	N	N	Y	Y	N
Water Tank 3							V22 (Recycle)	N	Y	Y	N	N	Y
V7 (Fill)	N	Y	Y	N	N	Y	Gunbarrel Tank 9						
V8 (Sales)	Y	N	N	Y	Y	N	V23 (Fill)	N	Y	N	Y	Y	N
V9 (Recycle)	Y	N	N	Y	N	Y	V24 (Sales)	N	Y	N	Y	Y	N
Bad Oil Tank 4							V25 (Sales)	N	Y	N	Y	Y	N
V10 (Fill)	N	Y	Y	N	N	Y	Oil Tank 10						
V11 (Sales)	Y	N	N	Y	Y	N	V26 (Fill)	N	Y	Y	N	N	Y
V12 (LACT Recycle)	Y	N	N	Y	N	Y	V27 (Sales)	Y	N	N	Y	Y	N
V13 (Recycle)	N	Y	N	Y	N	Y	V28 (Recycle)	Y	N	Y	N	N	Y
Oil Tank 5							Oil Tank 11						
V14 (Fill)	N	Y	Y	N	N	Y	V29 (Fill)	N	Y	Y	N	N	Y
V15 (Sales)	Y	N	N	Y	Y	N	V30 (Sales)	Y	N	N	Y	Y	N
V16 (Recycle)	Y	N	N	Y	N	Y	V31 (Recycle)	Y	N	Y	N	N	Y
							Oil Tank 12						
							V32 (Fill)	N	Y	Y	N	N	Y
							V33 (Sales)	Y	N	N	Y	Y	N
							V34 (Recycle)	Y	N	Y	N	N	Y
							Oil Tank 13						
							V35 (Fill)	N	Y	Y	N	N	Y
							V36 (Sales)	Y	N	N	Y	Y	N
							V37 (Recycle)	Y	N	Y	N	N	Y

Rev. 4 - Issued for Information Preliminary Version 0

Apr. 3, 2023

Drafted by: LaVerne Woroschuk (Elite Optz.)

Reviewed by: Ramon Barrera (Elite Optz.)

Approved by: (Caza Petro.)

Rev. 5 - Issued for Information Preliminary Version 0

June 12, 2023

Drafted by: Marcos Barriga (Elite Optz.)

Reviewed by: (Caza Petro.)

Approved by: (Caza Petro.)

Rev. 6 - Issued for Information Preliminary Version 5

June 20, 2024

Drafted by: Marcos Barriga (Elite Optz.)

Reviewed by: LaVerne Woroschuk (Elite Optz.)

Approved by: (Caza Petro.)

Job. #: 21-EliteOptz-0003-Rev6

Page 7 of 9

As-Built Valve Position Tables


Caza Petroleum, LLC.

Eagle Claw Federal Com


Wells 1H, 2H, 3H, 4H, 5H, 6H

Tank Batteries

BLM Lease Number: NMNM132945



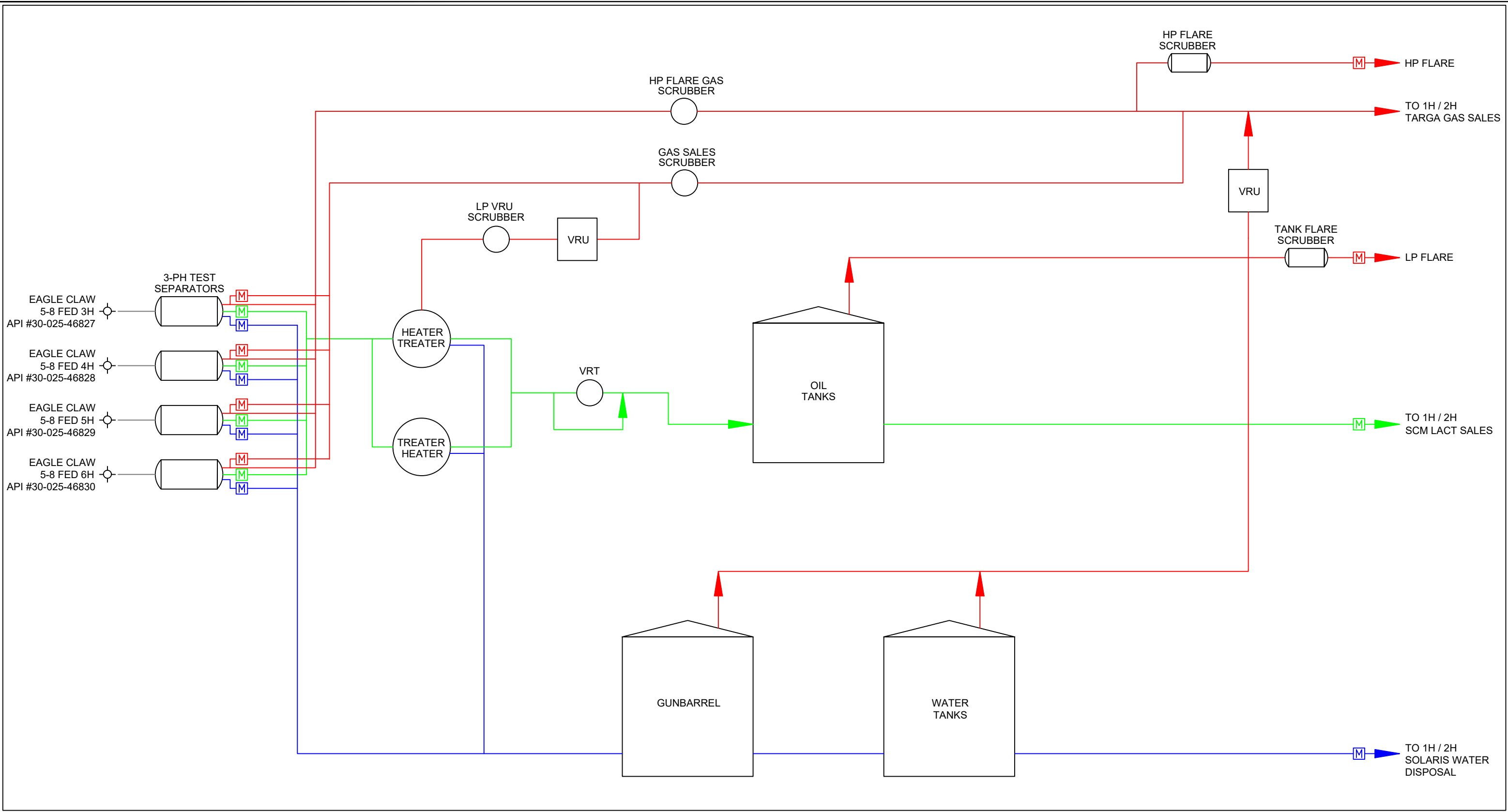
Disclaimer: This drawing is intended for Caza Petroleum, LLC. internal purposes only and is not to be relied upon as a boundary survey or to establish real property interests. Survey information shown on this drawing was gathered between the dates of: Dec. 29, 2020 and Oct. 5, 2023. Survey information was collected using a combination of GNSS observations and geo-referenced aerial drone imagery when required. Observations refer to: NAD83 (2011) Datum, New Mexico State Plane Coordinate System, East Zone (3001), US Survey Feet, CSF=0.99990909 This drawing includes additional information that was collected from various sources including first hand observations, walk-through photos when applicable and third party information as well as information provided by Caza Petroleum, LLC. Caza Petroleum, LLC. is to verify the accuracy of all information as presented on this drawing. Elite Optimization, LP. is not responsible for design by engineer of records, erection or operation of any facilities represented by this drawing. This drawing is not an official engineering drawing or land survey drawing; this drawing is not to be used for construction.



Received by OCD: 10/14/2024 12:35:11 PM

Released to Imaging: 10/14/2024 1:10:00 PM

(Paper: 11 x 17)



LEGEND:

Wellstream is shown thus:.....

Gas is shown thus:.....

Oil is shown thus:.....

Water is shown thus:.....

Oil & Water / Bad Oil is shown thus:.....

Gas Meter is shown thus:.....

Oil Meter is shown thus:.....

Water Meter is shown thus:.....

Rev. 4 - Issued for Information Preliminary Version 0	Apr. 3, 2023	Drafted by: LaVerne Woroschuk (Elite Optz.)	Reviewed by: Ramon Barrera (Elite Optz.)
Rev. 5 - Issued for Information Preliminary Version 0	June 12, 2023	Drafted by: Marcos Barriga (Elite Optz.)	Reviewed by: (Caza Petro.)
Rev. 6 - Issued for Information Preliminary Version 5	June 20, 2024	Drafted by: Marcos Barriga (Elite Optz.)	Reviewed by: LaVerne Woroschuk (Elite Optz.)

Job. #: 21-EliteOptz-0003-Rev6

Page 8 of 9

As-Built Process Flow Diagram for (Part 1)

Caza Petroleum, LLC.

Eagle Claw Federal Com

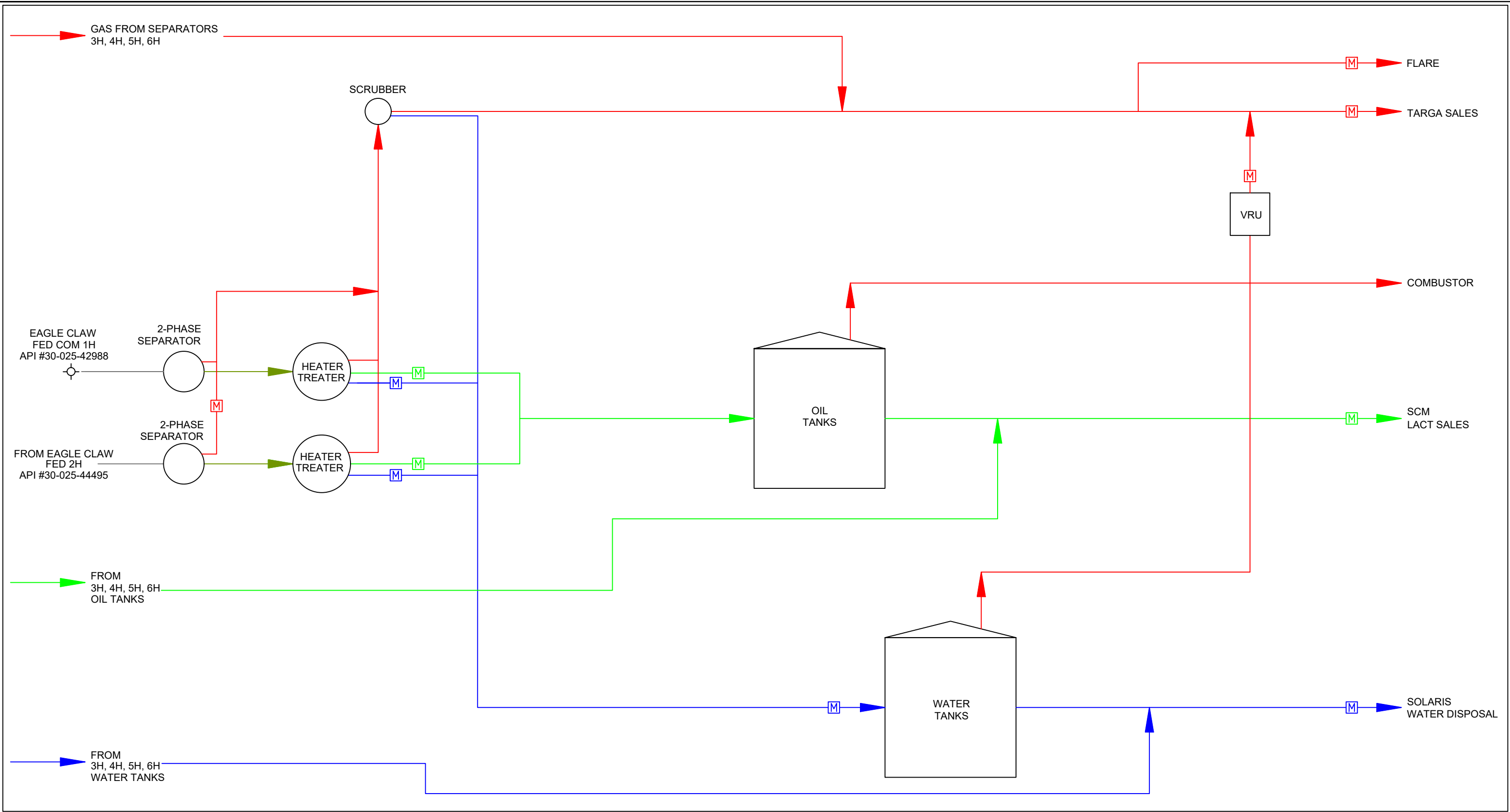
Wells 3H, 4H, 5H, 6H

BLM Lease Number: NMNM132945

Caza Petroleum, LLC

Disclaimer: This drawing is intended for Caza Petroleum, LLC. internal purposes only and is not to be relied upon as a boundary survey or to establish real property interests. Survey information shown on this drawing was gathered between the dates of: Dec. 29, 2020 and Oct. 5, 2023. Survey information was collected using a combination of GNSS observations and geo-referenced aerial drone imagery when required. Observations refer to: NAD83 (2011) Datum, New Mexico State Plane Coordinate System, East Zone (3001), US Survey Feet, CSF=0.99990909. This drawing includes additional information that was collected from various sources including first hand observations, walk-through photos when applicable and third party information as well as information provided by Caza Petroleum, LLC. Caza Petroleum, LLC. is to verify the accuracy of all information as presented on this drawing. Elite Optimization, LP. is not responsible for design by engineer of records, erection or operation of any facilities represented by this drawing. This drawing is not an official engineering drawing or land survey drawing; this drawing is not to be used for construction.

ELITE OPTIMIZATION



LEGEND:

Wellstream is shown thus:.....

Gas is shown thus:.....

Oil is shown thus:.....

Water is shown thus:.....

Oil & Water / Bad Oil is shown thus:.....

Gas Meter is shown thus:.....

Oil Meter is shown thus:.....

Water Meter is shown thus:.....

Rev. 4 - Issued for Information Preliminary Version 0	Apr. 3, 2023	Drafted by: LaVerne Woroschuk (Elite Optz.)
		Reviewed by: Ramon Barrera (Elite Optz.)
		Approved by: (Caza Petro.)
Rev. 5 - Issued for Information Preliminary Version 0	June 12, 2023	Drafted by: Marcos Barriga (Elite Optz.)
		Reviewed by: (Caza Petro.)
		Approved by: (Caza Petro.)
Rev. 6 - Issued for Information Preliminary Version 5	June 20, 2024	Drafted by: Marcos Barriga (Elite Optz.)
		Reviewed by: LaVerne Woroschuk (Elite Optz.)
		Approved by: (Caza Petro.)

Job. #: 21-EliteOptz-0003-Rev6

Page 9 of 9

As-Built Process Flow Diagram for (Part 2)

Caza Petroleum, LLC.

Eagle Claw Federal Com Wells 1H, 2H

BLM Lease Number: NMNM132945

Disclaimer: This drawing is intended for Caza Petroleum, LLC. internal purposes only and is not to be relied upon as a boundary survey or to establish real property interests. Survey information shown on this drawing was gathered between the dates of: Dec. 29, 2020 and Oct. 5, 2023. Survey information was collected using a combination of GNSS observations and geo-referenced aerial drone imagery when required. Observations refer to: NAD83 (2011) Datum, New Mexico State Plane Coordinate System, East Zone (3001), US Survey Feet, CSF=0.99990909. This drawing includes additional information that was collected from various sources including first hand observations, walk-through photos when applicable and third party information as well as information provided by Caza Petroleum, LLC. Caza Petroleum, LLC. is to verify the accuracy of all information as presented on this drawing. Elite Optimization, LP. is not responsible for design by engineer of records, erection or operation of any facilities represented by this drawing. This drawing is not an official engineering drawing or land survey drawing; this drawing is not to be used for construction.

District I
1625 N. French Dr., Hobbs, NM 88240
Phone:(575) 393-6161 Fax:(575) 393-0720

District II
811 S. First St., Artesia, NM 88210
Phone:(575) 748-1283 Fax:(575) 748-9720

District III
1000 Rio Brazos Rd., Aztec, NM 87410
Phone:(505) 334-6178 Fax:(505) 334-6170

District IV
1220 S. St Francis Dr., Santa Fe, NM 87505
Phone:(505) 476-3470 Fax:(505) 476-3462

State of New Mexico
Energy, Minerals and Natural Resources
Oil Conservation Division
1220 S. St Francis Dr.
Santa Fe, NM 87505

QUESTIONS

Action 392410

QUESTIONS

Operator: CAZA OPERATING, LLC 200 N Loraine St Midland, TX 79701	OGRID: 249099
	Action Number: 392410
	Action Type: [UF-FAC] TB Registration (TB-REG)

QUESTIONS

Facility Details	
<i>Please answer all the questions in this group.</i>	
Name of the facility	Eagleclaw 5-8 Federal 1H-2H Production Facility
Date the facility was opened	11/18/2017
Depth to ground water, if known	64

Verification	
Does the operator have other facilities with a matching name	No
Are there other facilites located within approximately 50 feet	No

District I
1625 N. French Dr., Hobbs, NM 88240
Phone:(575) 393-6161 Fax:(575) 393-0720
District II
811 S. First St., Artesia, NM 88210
Phone:(575) 748-1283 Fax:(575) 748-9720
District III
1000 Rio Brazos Rd., Aztec, NM 87410
Phone:(505) 334-6178 Fax:(505) 334-6170
District IV
1220 S. St Francis Dr., Santa Fe, NM 87505
Phone:(505) 476-3470 Fax:(505) 476-3462

State of New Mexico
Energy, Minerals and Natural Resources
Oil Conservation Division
1220 S. St Francis Dr.
Santa Fe, NM 87505

ACKNOWLEDGMENTS

Action 392410

ACKNOWLEDGMENTS

Operator: CAZA OPERATING, LLC 200 N Loraine St Midland, TX 79701	OGRID: 249099
	Action Number: 392410
	Action Type: [UF-FAC] TB Registration (TB-REG)

ACKNOWLEDGMENTS

<input checked="" type="checkbox"/>	I certify that I am authorized to register a facility on behalf of the responsible operator.
<input checked="" type="checkbox"/>	I certify that I will notify OCD of any changes of ownership for this facility.
<input checked="" type="checkbox"/>	I certify that I will notify OCD when this facility is closed.