

Ancell Environmental Consulting Services, LLC

July 5, 2025

New Mexico Oil Conservation Division (NMOCD)  
Attn: Leigh Barr, Administrative Permitting  
1220 South St. Francis Drive  
Santa Fe, New Mexico 87505

RE: Annual Leak Detection Report – Evaporation Ponds  
Reporting Period July 2023 - June 2024  
T-N-T Environmental, Inc. (OGRID 22099)  
Permit NM 1-008 (Evaporation Ponds and Landfarm)  
SE/4 of Section 7 and SW/4 of Section 8 (3 evaporation ponds) and  
the SW/4 SE/4 and SE/4 NW/4 of Section 5 and NE/4 NW/4 of Section  
8 (landfarm), Township 25 North, Range 3 West, NMPM, Rio Arriba  
County, New Mexico

Dear Ms. Barr,

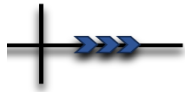
On behalf of T-N-T Environmental, Inc. (TNT), Ancell Environmental Consulting Services, LLC (AECS) would like to present the delinquent monitoring records detailing the weekly and monthly inspections of the leak detection systems in place for each pond to demonstrate compliance with the NM1-8 Conditions listed below. Based upon the existing permit conditions of Permit NM1-008 and the transitional provision of 19.15.36.20.A NMAC, TNT is required to inspect the leak detection sumps at Pond One (1) and Pond Three (3) on a weekly basis and the monitoring wells surrounding Pond Two (2) monthly. If fluid is present in the leak detection system, the fluids in the pond and the leak detection system must be analyzed for total dissolved solids (TDS) to determine if the concentrations are comparable and indicative of any leaks. The purpose of this Annual Leak Detection Report is to fulfill the requirements outlined in Conditions 2 and 4 of the Reporting and Record Keeping Section listed in permit NM1-008.

## Leak Detection Sump and Monitor Well Results

### *Pond 1*

The leak detection sump water level was recorded as 1 to 2 inches. The weekly inspection records are attached.

180 E. 12<sup>th</sup> St.  
Durango CO. 81301  
[tancellenviroco@gmail.com](mailto:tancellenviroco@gmail.com)



Ancell Environmental Consulting Services, LLC

### *Pond 2*

The water levels in the monitoring wells surrounding the pond were recorded as dry. The monthly monitor well records are attached.

### *Pond 3*

The leak detection sump water level was measured as zero (0) inches. The weekly inspection records are attached.

## Discussion

Pond 1 reported water levels ranging from 1-inch to 2-inches over the duration of the monitoring period. A small accumulation of liquid in the bottom of the pipe is typical of the detection system due to condensation between the two liners of the active pond. As such, no water is detected in the Leak Detection Sump that would indicate a leak in Pond 1.

Pond #2 and Pond #3 have not received any waste for over 5 years. Currently, TNT is in the process of evaluating permanently closing Pond #2. As for Pond #3, efforts to repair a leak detected in 2017 are in the planning phase. TNT has continued to monitor the leak detection systems for these two ponds and neither have recorded any liquid present in the monitoring wells or leak detection sump. Therefore, no leak has been detected in either system.

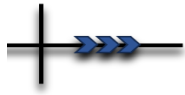
If you should have any questions or comments regarding this Annual Report for the 2023-2024 monitoring period, please feel free to contact AECS at (970) 946-9869.

Sincerely,

*Emilee Skyles*

Emilee Skyles  
Project Manager

NM1-8 Evaporation Pond Monitoring  
Annual Report 2023-2024  
Page 2



Ancell Environmental Consulting Services, LLC

## FIGURES

Figure 1. Site Location Map

Figure 2. Topographic Map

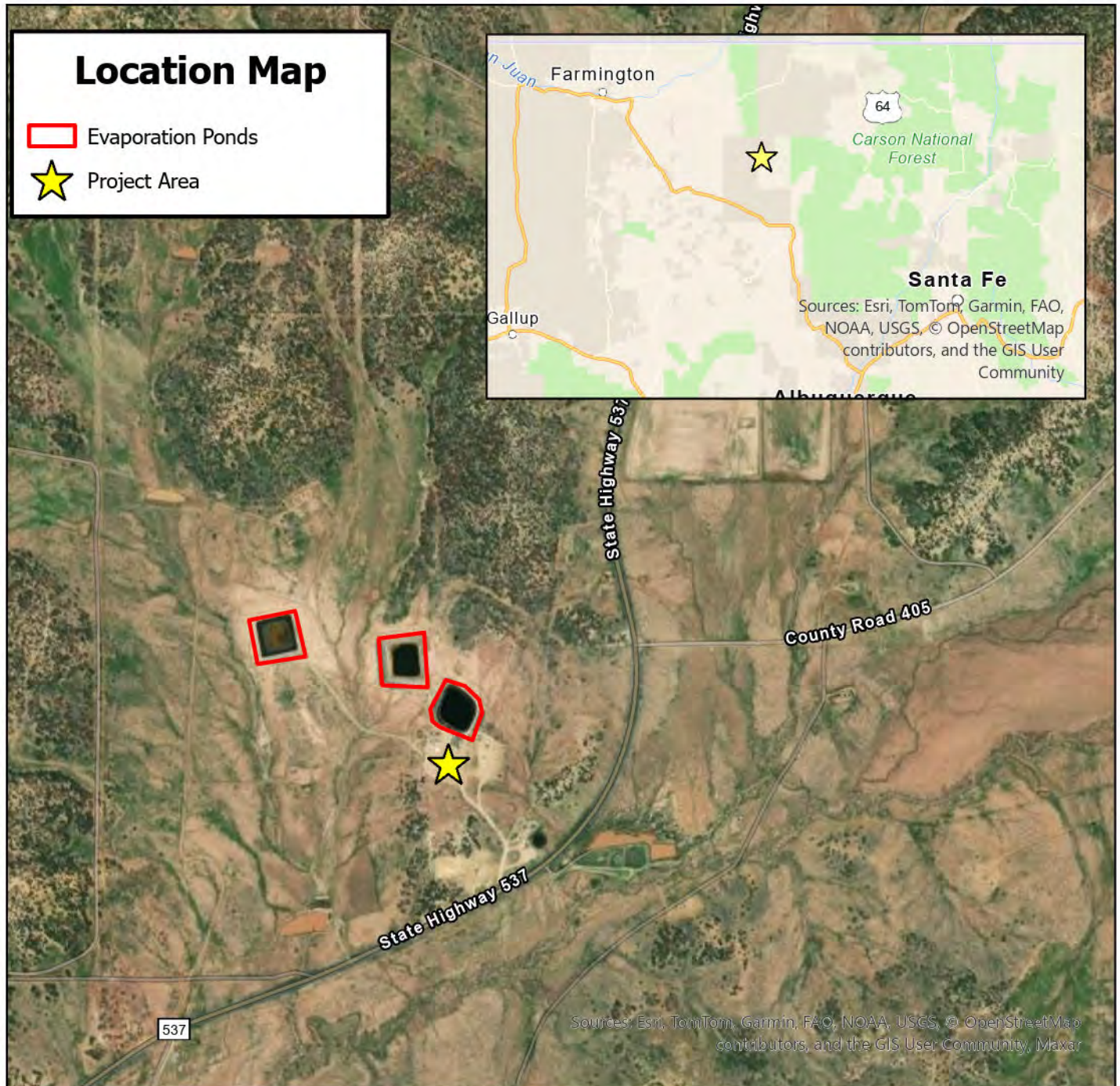
## ATTACHMENTS

Weekly Report on Leak Detection Sumps, Pond One and Pond Three

Monthly Monitor Well Report Records

## Limitations

Ancell Environmental Consulting Services has prepared this report to the best of its ability. No other warranty, expressed or implied, is made or intended. AECS has reviewed and relied upon documents referenced in this report and on oral statements made by individuals. AECS has not conducted an independent examination of the facts contained in the referenced materials and statements. AECS has presumed the genuineness of these documents and statements and that the information provided therein is true and accurate.



0 500 1,000 2,000 3,000 4,000 Feet



Ancell Environmental  
Consulting Services



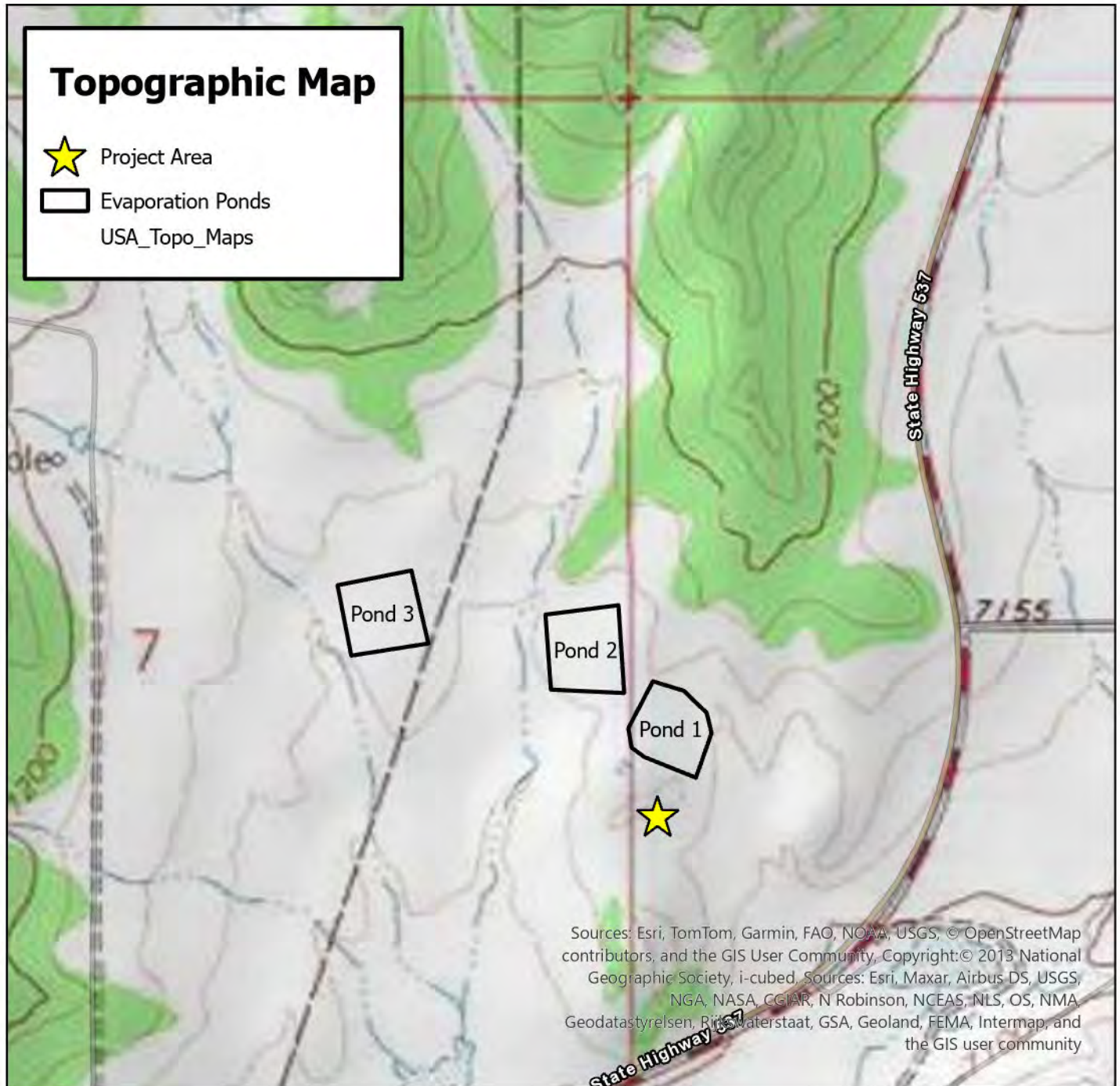
**TNT Environmental, Inc**

**Permit NM1-008**  
**Evaporation Ponds and Landfarm**  
**Facility ID: FEEM0112335451**

SE/4 of Section 7 and SW/4 of Section 8 (Evaporation Ponds) and SW/4  
SE/4 and SE/4 NW/4 of Section 5 and NE/4 NW/4 of Section 8  
(Landfarm)  
Township 25 North, Range 3 West, Rio Arriba County, New Mexico

**Fig  
1**





0 500 1,000 2,000 3,000 4,000 Feet



Ancell Environmental  
Consulting Services



**TNT Environmental, Inc**

**Permit NM1-008**  
**Evaporation Ponds and Landfarm**  
**Facility ID: FEEM0112335451**

SW/4 SE/4 and SE/4 NW/4 of Section 5 and NE/4 NW/4 of Section 8  
Township 25 North, Range 3 West, Rio Arriba County, New Mexico

**Fig  
2**

# T-n-T weekly Reports On Leak Detection Sumps Year 2023

	Pit # 1	Pit # 3
Date	Water Level	Water Level
6-30	1"	0"
7-3	2"	0"
7-4	1"	0"
7-5	1"	0"
7-6	1"	0"
7-7	1"	0"
7-10	2"	0"
7-11	1"	0"
7-12	1"	0"
7-13	1"	0"
7-14	1"	0"
7-17	2"	0"
7-18	1"	0"
7-19	1"	0"
7-20	1"	0"
7-21	1"	0"
7-24	2"	0"
7-25	1"	0"
7-26	1"	0"
7-27	1"	0"
7-28	1"	0"
7-31	2"	0"
8-1	1"	0"
8-2	1"	0"
8-3	1"	0"
8-4	1"	0"
8-7	2"	0"
8-8	1"	0"

	Pit # 1	Pit # 3
Date	Water Level	Water Level
8-9	1"	0"
8-10	1"	0"
8-11	1"	0"
8-14	2"	0"
8-15	1"	0"
8-16	1"	0"
8-17	1"	0"
8-18	1"	0"
8-21	2"	0"
8-22	1"	0"
8-23	1"	0"
8-24	1"	0"
8-25	1"	0"
8-28	2"	0"
8-29	1"	0"
8-30	1"	0"
8-31	1"	0"
9-1	1"	0"
9-4	2"	0"
9-5	1"	0"
9-6	1"	0"
9-7	1"	0"
9-8	1"	0"
9-11	2"	0"
9-12	1"	0"
9-13	1"	0"
9-14	1"	0"
9-15	1"	0"



# T-n-T weekly Reports On Leak Detection Sumps

## Year 2023

	Pit # 1	Pit # 3
Date	Water Level	Water Level
9-18	2"	0"
9-19	1"	0"
9-20	1"	0"
9-21	1"	0"
9-22	1"	0"
9-25	2"	0"
9-26	1"	0"
9-27	1"	0"
9-28	1"	0"
9-29	1"	0"
10-2	2"	0"
10-3	1"	0"
10-4	1"	0"
10-5	1"	0"
10-6	1"	0"
10-9	2"	0"
10-10	1"	0"
10-11	1"	0"
10-12	1"	0"
10-13	1"	0"
10-16	2"	0"
10-17	1"	0"
10-18	1"	0"
10-19	1"	0"
10-20	1"	0"
10-23	2"	0"
10-24	1"	0"
10-25	1"	0"

	Pit # 1	Pit # 3
Date	Water Level	Water Level
10-26	1"	0"
10-27	1"	0"
10-30	2"	0"
10-31	1"	0"
11-1	1"	0"
11-2	1"	0"
11-3	1"	0"
11-6	2"	0"
11-7	1"	0"
11-8	1"	0"
11-9	1"	0"
11-10	1"	0"
11-13	2"	0"
11-14	1"	0"
11-15	1"	0"
11-16	1"	0"
11-17	1"	0"
11-20	2"	0"
11-21	1"	0"
11-22	1"	0"
11-23	1"	0"
11-24	1"	0"
11-27	2"	0"
11-28	1"	0"
11-29	1"	0"
11-30	1"	0"
12-1	1"	0"
12-4	2"	0"

# **T-n-T weekly Reports On Leak Detection Sumps** **Year 2023 - 2024**

	Pit #1	Pit #3
Date	Water Level	Water Level
12-5	1"	0"
12-6	1"	0"
12-7	1"	0"
12-8	1"	0"
12-11	2"	0"
12-12	1"	0"
12-13	1"	0"
12-14	1"	0"
12-15	1"	0"
12-18	2"	0"
12-19	1"	0"
12-20	1"	0"
12-21	1"	0"
12-22	1"	0"
12-25	2"	0"
12-26	1"	0"
12-27	1"	0"
12-28	1"	0"
12-29	1"	0"
1-2-24	2"	0"
1-3-24	1"	0"
1-4-24	1"	0"
1-5-24	1"	0"
1-8-24	2"	0"
1-9-24	1"	0"
1-10-24	1"	0"
1-11-24	1"	0"
1-12-24	1"	0"

	Pit #1	Pit #3
Date	Water Level	Water Level
1-15-24	2"	0"
1-16-24	1"	0"
1-17-24	1"	0"
1-18-24	1"	0"
1-19-24	1"	0"
1-22-24	2"	0"
1-23-24	1"	0"
1-24-24	1"	0"
1-25-24	1"	0"
1-26-24	1"	0"
1-29-24	2"	0"
1-30-24	1"	0"
1-31-24	1"	0"
2-1-24	1"	0"
2-2-24	1"	0"
2-5-24	2"	0"
2-6-24	1"	0"
2-7-24	1"	0"
2-8-24	1"	0"
2-9-24	1"	0"
2-12-24	2"	0"
2-13-24	1"	0"
2-14-24	1"	0"
2-15-24	1"	0"
2-16-24	1"	0"
2-19-24	2"	0"
2-20-24	1"	0"
2-21-24	1"	0"



# T-n-T weekly Reports On Leak Detection Sumps Year 2024

	Pit #1	Pit #3
Date	Water Level	Water Level
2-22-24	1"	0
2-23-24	1"	0"
2-26-24	2"	0"
2-27-24	1"	0"
2-28-24	1"	0"
2-29-24	1"	0"
3-1-24	1"	0"
3-4-24	2"	0"
3-5-24	1"	0"
3-6-24	1"	0"
3-7-24	1"	0"
3-8-24	1"	0"
3-11-24	2"	0"
3-12-24	1"	0"
3-13-24	1"	0"
3-14-24	1"	0"
3-15-24	1"	0"
3-18-24	2"	0"
3-19-24	1"	0"
3-20-24	1"	0"
3-21-24	1"	0"
3-22-24	1"	0"
3-25-24	2"	0"
3-26-24	1"	0"
3-27-24	1"	0"
3-28-24	1"	0"
3-29-24	1"	0"
4-1-24	2"	0"

	Pit #1	Pit #3
Date	Water Level	Water Level
4-2-24	1"	0"
4-3-24	1"	0"
4-4-24	1"	0"
4-5-24	1"	0"
4-8-24	2"	0"
4-9-24	1"	0"
4-10-24	1"	0"
4-11-24	1"	0"
4-12-24	1"	0"
4-15-24	2"	0"
4-16-24	1"	0"
4-17-24	1"	0"
4-18-24	1"	0"
4-19-24	1"	0"
4-22-24	2"	0"
4-23-24	1"	0"
4-24-24	1"	0"
4-25-24	1"	0"
4-26-24	1"	0"
4-29-24	2"	0"
4-30-24	1"	0"
5-1-24	1"	0"
5-2-24	1"	0"
5-3-24	1"	0"
5-6-24	2"	0"
5-7-24	1"	0"
5-8-24	1"	0"
5-9-24	1"	0"

# T-n-T weekly Reports On Leak Detection Sumps Year 2024

	Pit #1	Pit #3
Date	Water Level	Water Level
5-10-24	1"	0"
5-10-24	1"	0"
5-13-24	2"	0"
5-14-24	1"	0"
5-15-24	1"	0"
5-16-24	1"	0"
5-17-24	1"	0"
5-20-24	2"	0"
5-21-24	1"	0"
5-22-24	1"	0"
5-23-24	1"	0"
5-24-24	1"	0"
5-27-24	2"	0"
5-28-24	2"	0"
5-29-24	1"	0"
5-30-24	1"	0"
5-31-24	1"	0"
6-3-24	2"	0"
6-4-24	1"	0"
6-5-24	1"	0"
6-6-24	1"	0"
6-7-24	1"	0"
6-10-24	2"	0"
6-11-24	1"	0"
6-12-24	1"	0"
6-13-24	1"	0"
6-14-24	1"	0"
6-17-24	2"	0"

	Pit #1	Pit #3
Date	Water Level	Water Level
6-18-24	1"	0"
6-19-24	1"	0"
6-20-24	1"	0"
6-21-24	1"	0"
6-24-24	2"	0"
6-25-24	1"	0"
6-26-24	1"	0"
6-27-24	1"	0"
6-28-24	1"	0"
7-1-24	2"	0"
7-2-24	1"	0"
7-3-24	1"	0"
7-5-24	1"	0"
7-8-24	2"	0"
7-9-24	1"	0"
7-10-24	1"	0"
7-11-24	1"	0"
7-12-24	1"	0"
7-15-24	2"	0"
7-16-24	1"	0"
7-17-24	1"	0"
7-18-24	1"	0"
7-19-24	1"	0"
7-22-24	2"	0"
7-23-24	1"	0"
7-24-24	1"	0"
7-25-24	1"	0"
7-26-24	1"	0"

# T-n-T weekly Reports On Leak Detection Sumps Year 2024

	Pit #1	Pit #3
Date	Water Level	Water Level
7/29	2"	0"
7/30	1"	0"
7/31	1"	0"
8/1	1"	0"
8-2	1"	0"
8/5	2"	0"
8/6	1"	0"
8/7	1"	0"
8-8	1"	0"
8-9	1"	0"
8-12	2"	0"
8-13	1"	0"
8-14	1"	0"
8-15	1"	0"
8-16	1"	0"
8-19	2"	0"
8-20	1"	0"
8-21	1"	0"
8-22	1"	0"
8-23	1"	0"
8-26	2"	0"
8-27	1"	0"
8-28	1"	0"
8-29	1"	0"
8-30	1"	0"
9-3	2"	0"
9-4	1"	0"
9-5	1"	0"

	Pit #1	Pit #3
Date	Water Level	Water Level
9-6	1"	0"
9-9	2"	0"
9-10	1"	0"
9-11	1"	0"
9-12	1"	0"
9-13	1"	0"
9-16	2"	0"
9-17	1"	0"
9-18	1"	0"
9-19	1"	0"
9-20	1"	0"
9-23	2"	0"
9-24	1"	0"
9-25	1"	0"
9-26	1"	0"
9-27	1"	0"
9-30	2"	0"
10-1	1"	0"
10-2	1"	0"
10-3	1"	0"
10-4	1"	0"
10-7	2"	0"
10-8	1"	0"
10-9	1"	0"
10-11	1"	0"
10-14	2"	0"
10-15	1"	0"
10-16	1"	0"



## T-N-T Pit #2 Monthly Monitor Well Report

Year: 20-23

	MONTH			MONTH			MONTH			MONTH		
	February			March			April			May		
Pit #2 Site	DATE	Water Level	Conduc tivity	DATE	Water Level	Conduc tivity	DATE	Water Level	Conduc tivity	DATE	Water Level	Conduc tivity
Well #1	2/15	Dry		3/15	Dry		4/14	Dry		5/15	0	
Well #2	2/15	Dry		3/15	Dry		4/14	Dry		5/15	0	
Well #3	2/15	Dry		3/15	Dry		4/14	Dry		5/15	0	
Well #4	2/15	Dry		3/15	Dry		4/14	Dry		5/15	0	
Well #5	2/15	Dry		3/15	Dry		4/14	Dry		5/15	0	
Well #6	2/15	Dry		3/15	Dry		4/14	Dry		5/15	0	
Well #7	2/15	Dry		3/15	Dry		4/14	Dry		5/15	0	
Well #8	2/15	Dry		3/15	Dry		4/14	Dry		5/15	0	
Well #9	2/15	Dry		3/15	Dry		4/14	Dry		5/15	0	
Well #10	2/15	Dry		3/15	Dry		4/14	Dry		5/15	0	
Well #11	2/15	Dry		3/15	Dry		4/14	Dry		5/15	0	
Well #12	2/15	Dry		3/15	Dry		4/14	Dry		5/15	0	
Well #13	2/15	Dry		3/15	Dry		4/14	Dry		5/15	0	

	MONTH			MONTH			MONTH			MONTH		
	June			July			August			September		
Pit #2 Site	DATE	Water Level	Conduc tivity	DATE	Water Level	Conduc tivity	DATE	Water Level	Conduc tivity	DATE	Water Level	Conduc tivity
Well #1	6/15	Dry		7/14	Dry		8/15	0		9/15	Dry	
Well #2	6/15	Dry		7/14	Dry		8/15	0		9/15	Dry	
Well #3	6/15	Dry		7/14	Dry		8/15	0		9/15	Dry	
Well #4	6/15	Dry		7/14	Dry		8/15	0		9/15	Dry	
Well #5	6/15	Dry		7/14	Dry		8/15	0		9/15	Dry	
Well #6	6/15	Dry		7/14	Dry		8/15	0		9/15	Dry	
Well #7	6/15	Dry		7/14	Dry		8/15	0		9/15	Dry	
Well #8	6/15	Dry		7/14	Dry		8/15	0		9/15	Dry	
Well #9	6/15	Dry		7/14	Dry		8/15	0		9/15	Dry	
Well #10	6/15	Dry		7/14	Dry		8/15	0		9/15	Dry	
Well #11	6/15	Dry		7/14	Dry		8/15	0		9/15	Dry	
Well #12	6/15	Dry		7/14	Dry		8/15	0		9/15	Dry	
Well #13	6/15	Dry		7/14	Dry		8/15	0		9/15	Dry	

## T-N-T Pit #2 Monthly Monitor Well Report

Year: 2023-2024

	MONTH			MONTH			MONTH			MONTH		
	October			November			December			January		
Pit #2 Site	DATE	Water Level	Conduc tivity	DATE	Water Level	Conduc tivity	DATE	Water Level	Conduc tivity	DATE	Water Level	Conduc tivity
Well #1	10/16	Dry		11-15	0		12/15	Dry		1/15	Dry	
Well #2	10/16	Dry		11-15	0		12/15	Dry		1/15	Dry	
Well #3	10/16	Dry		11-15	0		12/15	Dry		1/15	Dry	
Well #4	10/16	Dry		11-15	0		12/15	Dry		1/15	Dry	
Well #5	10/16	Dry		11-15	0		12/15	Dry		1/15	Dry	
Well #6	10/16	Dry		11-15	0		12/15	Dry		1/15	Dry	
Well #7	10/16	Dry		11-15	0		12/15	Dry		1/15	Dry	
Well #8	10/16	Dry		11-15	0		12/15	Dry		1/15	Dry	
Well #9	10/16	Dry		11-15	0		12/15	Dry		1/15	Dry	
Well #10	10/16	Dry		11-15	0		12/15	Dry		1/15	Dry	
Well #11	10/16	Dry		11-15	0		12/15	Dry		1/15	Dry	
Well #12	10/16	Dry		11-15	0		12/15	Dry		1/15	Dry	
Well #13	10/16	Dry		11-15	0		12/15	Dry		1/15	Dry	

	MONTH			MONTH			MONTH			MONTH		
	February			March			April			May		
Pit #2 Site	DATE	Water Level	Conduc tivity	DATE	Water Level	Conduc tivity	DATE	Water Level	Conduc tivity	DATE	Water Level	Conduc tivity
Well #1	2/15	Dry		3/15	Dry		4/15	Dry		5/15	Dry	
Well #2	2/15	Dry		3/15	Dry		4/15	Dry		5/15	Dry	
Well #3	2/15	Dry		3/15	Dry		4/15	Dry		5/15	Dry	
Well #4	2/15	Dry		3/15	Dry		4/15	Dry		5/15	Dry	
Well #5	2/15	Dry		3/15	Dry		4/15	Dry		5/15	Dry	
Well #6	2/15	Dry		3/15	Dry		4/15	Dry		5/15	Dry	
Well #7	2/15	Dry		3/15	Dry		4/15	Dry		5/15	Dry	
Well #8	2/15	Dry		3/15	Dry		4/15	Dry		5/15	Dry	
Well #9	2/15	Dry		3/15	Dry		4/15	Dry		5/15	Dry	
Well #10	2/15	Dry		3/15	Dry		4/15	Dry		5/15	Dry	
Well #11	2/15	Dry		3/15	Dry		4/15	Dry		5/15	Dry	
Well #12	2/15	Dry		3/15	Dry		4/15	Dry		5/15	Dry	
Well #13	2/15	Dry		3/15	Dry		4/15	Dry		5/15	Dry	

## T-N-T Pit #2 Monthly Monitor Well Report

Year: 2024-2025

	MONTH			MONTH			MONTH			MONTH		
	June			July			August			September		
Pit #2 Site	DATE	Water Level	Conduc tivity	DATE	Water Level	Conduc tivity	DATE	Water Level	Conduc tivity	DATE	Water Level	Conduc tivity
Well #1	6/14	Dry		7/15	Dry		8/15	Dry		9/16	Dry	
Well #2	6/14	Dry		7/15	Dry		8/15	Dry		9/16	Dry	
Well #3	6/14	Dry		7/15	Dry		8/15	Dry		9/16	Dry	
Well #4	6/14	Dry		7/15	Dry		8/15	Dry		9/16	Dry	
Well #5	6/14	Dry		7/15	Dry		8/15	Dry		9/16	Dry	
Well #6	6/14	Dry		7/15	Dry		8/15	Dry		9/16	Dry	
Well #7	6/14	Dry		7/15	Dry		8/15	Dry		9/16	Dry	
Well #8	6/14	Dry		7/15	Dry		8/15	Dry		9/16	Dry	
Well #9	6/14	Dry		7/15	Dry		8/15	Dry		9/16	Dry	
Well #10	6/14	Dry		7/15	Dry		8/15	Dry		9/16	Dry	
Well #11	6/14	Dry		7/15	Dry		8/15	Dry		9/16	Dry	
Well #12	6/14	Dry		7/15	Dry		8/15	Dry		9/16	Dry	
Well #13	6/14	Dry		7/15	Dry		8/15	Dry		9/16	Dry	

	MONTH			MONTH			MONTH			MONTH		
	October			November			December			January		
Pit #2 Site	DATE	Water Level	Conduc tivity	DATE	Water Level	Conduc tivity	DATE	Water Level	Conduc tivity	DATE	Water Level	Conduc tivity
Well #1	10/15	Dry		11/15	Dry		12/16	Dry		1/15	Dry	
Well #2	10/15	Dry		11/15	Dry		12/16	Dry		1/15	Dry	
Well #3	10/15	Dry		11/15	Dry		12/16	Dry		1/15	Dry	
Well #4	10/15	Dry		11/15	Dry		12/16	Dry		1/15	Dry	
Well #5	10/15	Dry		11/15	Dry		12/16	Dry		1/15	Dry	
Well #6	10/15	Dry		11/15	Dry		12/16	Dry		1/15	Dry	
Well #7	10/15	Dry		11/15	Dry		12/16	Dry		1/15	Dry	
Well #8	10/15	Dry		11/15	Dry		12/16	Dry		1/15	Dry	
Well #9	10/15	Dry		11/15	Dry		12/16	Dry		1/15	Dry	
Well #10	10/15	Dry		11/15	Dry		12/16	Dry		1/15	Dry	
Well #11	10/15	Dry		11/15	Dry		12/16	Dry		1/15	Dry	
Well #12	10/15	Dry		11/15	Dry		12/16	Dry		1/15	Dry	
Well #13	10/15	Dry		11/15	Dry		12/16	Dry		1/15	Dry	



Sante Fe Main Office  
Phone: (505) 476-3441

General Information  
Phone: (505) 629-6116

Online Phone Directory  
<https://www.emnrd.nm.gov/ocd/contact-us>

State of New Mexico  
Energy, Minerals and Natural Resources  
Oil Conservation Division  
1220 S. St Francis Dr.  
Santa Fe, NM 87505

CONDITIONS

Action 481860

CONDITIONS

Operator: T-N-T ENVIRONMENTAL INC PO Box 2530 Farmington, NM 87499	OGRID: 22099
	Action Number: 481860
	Action Type: [C-137] Non-Fee SWMF Submittal (SWMF NON-FEE SUBMITTAL)

CONDITIONS

Created By	Condition	Condition Date
lbarr	Accepted for record.	11/7/2025