

NM1-64
Milestone Battle Axe
SWMF
Approved
Contingency Plan
June 26, 2026



Battle Axe Contingency Plan

Date Created: 2/25/2026

Revision: 0

Review Date: TBD

1.0 PURPOSE

This Emergency Contingency Plan has been developed in accordance with 19.15.36.13.N NMAC and serves as the primary emergency response document for the Battle Axe Surface Waste Management Facility.

The purpose of this plan is to establish procedures for preventing, responding to, and managing emergency situations in a manner that minimizes hazards to fresh water, public health, employee safety, and the environment.

This plan addresses emergency coordination, response actions, equipment, evacuation procedures, regulatory notifications, and post-incident recovery associated with fires, explosions, releases of oil field waste, or operational failures.

2.0 FACILITY IDENTIFICATION AND SCOPE

2.1 Facility Information

- **Facility Name:** Battle Axe Surface Waste Management Facility
- **Facility ID:** NM1-64
- **Operator:** Milestone Environmental Services, LLC
- **Physical Address:** 1290 NM Highway 128, Jal, NM 88252
- **Coordinates:** 32.189167, -103.416169
- **Regulatory Authority:** New Mexico Oil Conservation Division (NMOCD)

2.2 Scope of Operations

The facility is permitted to receive, store, and manage oil field waste in accordance with NMOCD regulations.

Waste Streams may include:

- Produced water and brine
- Drilling fluids
- Tank bottoms
- Sediment and solids
- Other E&P exempt wastes



MILESTONE
ENVIRONMENTAL SERVICES

SAFETY: IT'S OUR FAMILY VALUE

Battle Axe Contingency Plan

Date Created: 2/25/2026

Revision: 0

Review Date: TBD

3.0 Emergency Coordinator Designation and Authority 19.15.36.13.N(3)

3.1 Primary Emergency Coordinator

Name: Jimmy Hamilton

Title: Operations Manager

Business Address: 1290 NM Highway 128, Jal, NM 88252

Office Phone: 575-214-6800

Mobile Phone: 432-813-7961

The Primary Emergency Coordinator has full authority to implement this plan and direct all emergency response actions.

3.2 Alternate Emergency Coordinator

Name: Hector Cervantes

Title: Regional Manager

Business Address: 1290 NM Highway 128, Jal, NM 88252

Mobile Phone: 432-894-8773

The Alternate Emergency Coordinator has the same authority in the absence of the Primary Coordinator.

3.3 Availability

At least one Emergency Coordinator shall be available at all times, either onsite or on call.



Battle Axe Contingency Plan

Date Created: 2/25/2026

Revision: 0

Review Date: TBD

4.0 Emergency Equipment and Resources 19.15.36.13.N(4)

4.1 Emergency Equipment Inventory

The Battle Axe Surface Waste Management Facility maintains emergency response equipment to support response to fires, spills, releases of oil field waste, and other emergency situations. The equipment listed below is available onsite and maintained to support emergency response activities.

Equipment	Location	Description	Capability
Fire Extinguishers	Located throughout facility including tank battery, equipment areas, and office	Portable fire suppression units	Used to control small fires involving hydrocarbons, electrical equipment, or general combustibles
Spill Response Kits	Located near tank battery, transfer areas, and truck unloading/loading areas	Kits containing absorbent pads, absorbent socks, containment materials, and personal protective equipment	Used for containment and recovery of oil field waste or chemical spills
Emergency Shutoff Valves	Located on transfer lines, tank systems, and process piping	Manual valves designed to stop flow of fluids	Used to isolate equipment and stop releases of oil field waste
Cellular Phones / Communication Devices	Maintained by facility personnel and supervisors	Mobile communication devices	Used to notify emergency responders, supervisors, and regulatory agencies
First Aid Kits	Located in office area and company vehicles	OSHA-compliant first aid supplies	Used to provide immediate medical response for minor injuries
Personal Protective Equipment (PPE)	Stored in designated safety equipment areas	equipment areas Includes gloves, eye protection, protective clothing, and respiratory protection as required	Used to protect personnel during emergency response and cleanup activities
Containment Equipment	Located within facility operations area	Includes containment berms and secondary containment structures	Used to prevent releases from migrating beyond controlled areas



Battle Axe Contingency Plan

Date Created: 2/25/2026

Revision: 0

Review Date: TBD

Equipment Inspection and Maintenance

Emergency equipment is inspected regularly to ensure it remains functional and available for use during emergency situations.

5.0 Evacuation Procedures and Site Map 19.15.36.13.N(5) NMAC

5.1 Evacuation Signal

Facility personnel are notified of the need to evacuate the Battle Axe Surface Waste Management Facility through the following signal:

Three (3) air horn blasts accompanied by verbal notification when possible.

Upon hearing the evacuation signal, all personnel must immediately stop work activities and proceed to the designated assembly area using the identified evacuation routes.

This evacuation signal is consistent with the procedures described in the facility Emergency Action Plan (EAP).

5.2 Evacuation Routes

Personnel shall evacuate the facility using the designated primary evacuation routes identified on the facility site map.

The primary evacuation route directs personnel away from operational areas toward the facility entrance and designated muster point located at the cement pad near the facility exit.

Personnel shall remain aware of surrounding conditions and avoid areas affected by fire, spills, or hazardous releases while evacuating.

5.3 Alternate Evacuation Routes

If the primary evacuation route is not accessible due to fire, explosion, or release of oil field waste, personnel shall utilize alternate evacuation routes identified on the facility site map.

Alternate evacuation routes allow personnel to safely exit the facility while avoiding hazardous areas.

5.4 Assembly/ Muster Point

After evacuating the facility, all personnel shall report to the designated assembly/muster point located at the facility entrance near the cement pad and exit gate.

Supervisors or designated personnel will account for all employees, contractors, and visitors to ensure everyone has safely evacuated the facility.

Personnel shall remain at the assembly area until they receive further instructions from the Emergency Coordinator or emergency responders.



Battle Axe Contingency Plan

Date Created: 2/25/2026

Revision: 0

Review Date: TBD

5.5 Site Evacuation Map

A facility site plan showing evacuation routes, alternate evacuation routes, and assembly locations is included in this Contingency Plan as:

Appendix A – Battle Axe Facility Evacuation Site Map

The site map will be updated as necessary to reflect facility changes or updates to evacuation procedures.

6.0 Emergency Response Procedures (Spill, Fire, Explosion) (19.15.36.13.N(6))

The Battle Axe Surface Waste Management Facility shall maintain procedures to respond to spills, fires, explosions, and other emergency situations in a manner that protects fresh water, public health, and the environment.

6.1 General Emergency Response

In the event of an emergency, personnel shall:

- Ensure personal safety and the safety of others
- Activate the evacuation signal (three horn blasts) if necessary
- Notify the Emergency Coordinator immediately
- Contact emergency responders (911) if required
- Take action to control the emergency only if it is safe to do so

All response actions shall prioritize protection of personnel, containment of released materials, and prevention of environmental impacts.

6.2 Fire and Explosion Response

In the event of a fire or explosion:

- Activate the evacuation signal and evacuate personnel immediately
- Contact emergency responders (911) if safe to do so
- Notify the Emergency Coordinator and facility management
- Do not attempt to extinguish fires unless the fire is small and contained, personnel are trained, proper equipment is available, and it is safe to do so

Personnel shall not place themselves at risk during fire or explosion events.

6.3 Spill or Release Response

In the event of a spill or release of oil field waste:



MILESTONE
ENVIRONMENTAL SERVICES

SAFETY: IT'S OUR FAMILY VALUE

Battle Axe Contingency Plan

Date Created: 2/25/2026

Revision: 0

Review Date: TBD

Initial Response Actions

- Stop the source of the release if it can be done safely
- Shut down pumps and isolate affected systems
- Close valves or activate emergency shutoff systems
- Establish a safe perimeter around the affected area

Containment

- Deploy absorbent materials, berms, or other containment equipment
- Prevent migration of released material outside containment areas
- Protect drainage pathways, soil, and nearby water resources

Notification

- Notify the Emergency Coordinator
- Notify facility management
- Notify appropriate regulatory agencies if required

6.4 Incident Stabilization

- Secure the affected area
- Prevent additional releases
- Maintain containment measures
- Coordinate additional response resources if necessary

7.0 Contaminant Identification and Remediation 19.15.36.13.N(6) NMAC

7.1 Expected Contaminants

- Produced water and brine
- Hydrocarbon liquids and residual oil
- Sediment and solids
- Treatment chemicals and additives
- Potential gases (including H₂S)

7.2 Potentially Impacted Media

- Soil
- Surface water



MILESTONE
ENVIRONMENTAL SERVICES

SAFETY: IT'S OUR FAMILY VALUE

Battle Axe Contingency Plan

Date Created: 2/25/2026

Revision: 0

Review Date: TBD

- Groundwater
- Air

7.3 Investigation Procedures

- Identify the source and cause of the release
- Review operational records, logs, and manifests
- Conduct visual inspections
- Collect samples if necessary
- Document findings

7.4 Remediation Procedures

- Containment of released materials
- Recovery of liquids using vacuum trucks
- Excavation of impacted soil
- Proper storage and transportation of waste
- Disposal at approved facilities

All remediation will be conducted in accordance with applicable regulatory requirements, including 19.15.36.K NMAC: Operator shall comply with the spill reporting and corrective action provisions of 19.15.30 NMAC or 19.15.29 NMAC.

8.0 Plan Distribution and Availability 19.15.36.13.N(7) NMAC

- Battle Axe Surface Waste Management Facility
- Jal Fire Department
- Lea County Sheriff's Office
- Local medical facilities
- New Mexico Oil Conservation Division
- Local emergency response agencies

The plan shall be readily accessible to facility personnel and emergency responders.

9.0 Plan Amendments 19.15.36.13.N(8) NMAC

This Contingency Plan shall be amended within five (5) working days whenever:

- The facility permit is revised or modified
- The plan fails during an emergency



MILESTONE
ENVIRONMENTAL SERVICES

SAFETY: IT'S OUR FAMILY VALUE

Battle Axe Contingency Plan

Date Created: 2/25/2026

Revision: 0

Review Date: TBD

- Facility operations or design changes increase risk
- Emergency coordinator information changes
- Emergency equipment inventory changes

10.0 Emergency Notification Procedures 19.15.36.13.N(9) NMAC

10.1 Internal Notification

- Activate the evacuation alarm (three air horn blasts)
- Notify the Emergency Coordinator
- Notify all onsite personnel

10.2 External Notification

- Emergency services (911) – Phone: 911
- Jal Fire Department – Phone: 575-395-2585
- Lea County Sheriff – Phone: 575-396-8186
- New Mexico Oil Conservation Division – Phone: 505-827-7126
- Other agencies as required

11.0 Release Characterization and Hazard Assessment 19.15.36.13.N(10) NMAC

The Emergency Coordinator shall immediately determine:

- The type and characteristics of released material
- The source of the release
- The estimated quantity
- The extent of the affected area

Hazard Assessment Includes

- Potential impacts to fresh water
- Risks to public health
- Air quality impacts
- Fire and explosion hazards

12.0 Post-Incident Monitoring 19.15.36.13.N(11) NMAC

Monitoring may include:

- Visual inspection



MILESTONE
ENVIRONMENTAL SERVICES

SAFETY: IT'S OUR FAMILY VALUE

Battle Axe Contingency Plan

Date Created: 2/25/2026

Revision: 0

Review Date: TBD

- Pressure monitoring
- Gas detection
- Equipment integrity checks

Monitoring shall continue until all systems are stabilized, hazards are eliminated, and operations can safely resume.

13.0 Waste Handling and Disposal 19.15.36.13.N(12) NMAC

- Proper containment of recovered materials
- Characterization if necessary
- Transport by licensed haulers
- Disposal at authorized facilities

All activities shall be documented.

14.0 Incompatible Waste Control and Emergency Plan Amendments 19.15.36.13.N(13)-(14) NMAC

The emergency Coordinator will ensure:

- No incompatible waste is managed until cleanup is complete
- Waste compatibility is verified

The Emergency Coordinator has authority to amend this plan during the emergency to protect fresh water, public health, and the environment.



MILESTONE
ENVIRONMENTAL SERVICES

SAFETY: IT'S OUR FAMILY VALUE

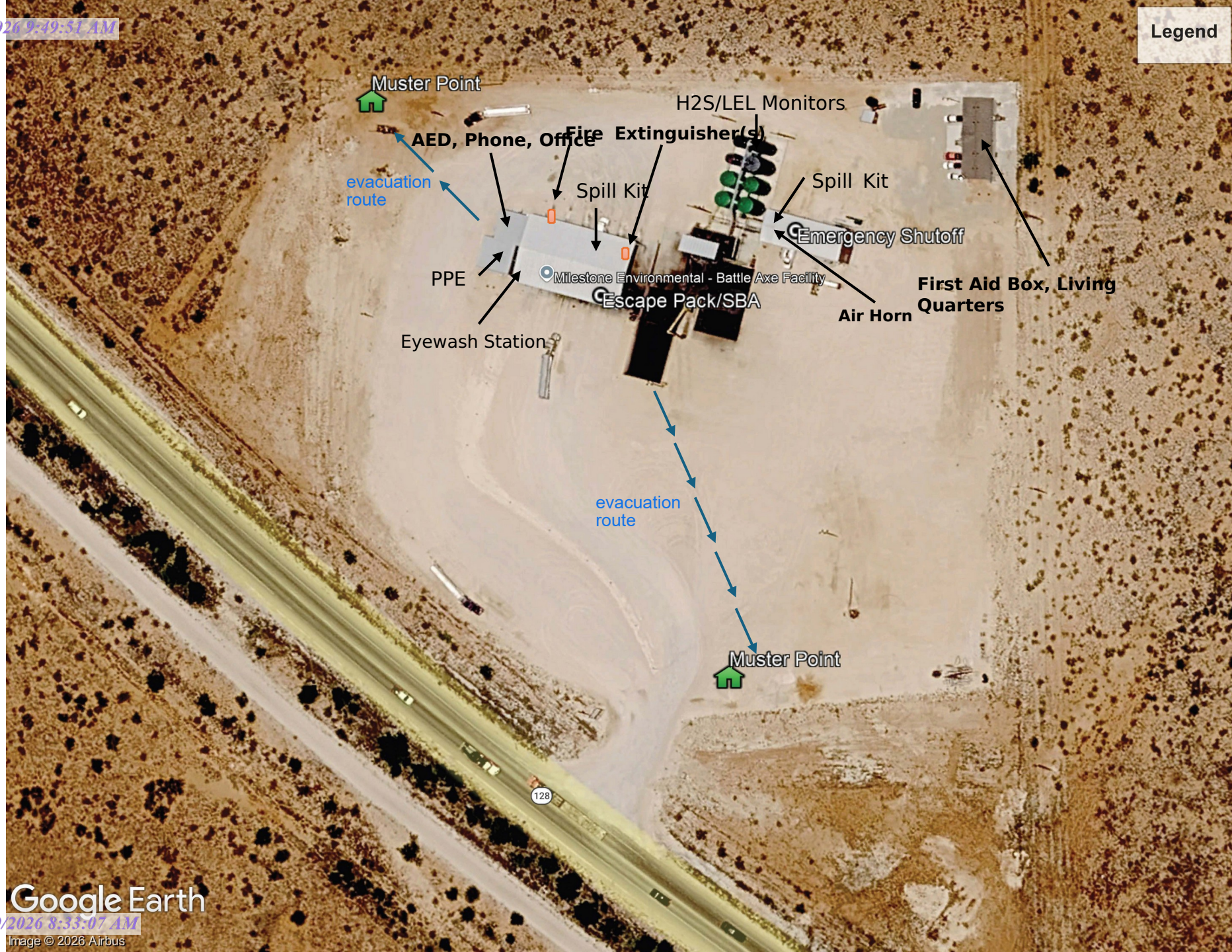
Battle Axe Contingency Plan

Date Created: 2/25/2026

Revision: 0

Review Date: TBD

Appendix A



Muster Point

H2S/LEL Monitors

AED, Phone, Office

Fire Extinguisher(s)

evacuation route

Spill Kit

Spill Kit

Emergency Shutoff

PPE

Milestone Environmental - Battle Axe Facility

Escape Pack/SBA

Air Horn

First Aid Box, Living Quarters

Eyewash Station

evacuation route

Muster Point

Sante Fe Main Office
Phone: (505) 476-3441

General Information
Phone: (505) 629-6116

Online Phone Directory
<https://www.emnrd.nm.gov/ocd/contact-us>

State of New Mexico
Energy, Minerals and Natural Resources
Oil Conservation Division
1220 S. St Francis Dr.
Santa Fe, NM 87505

CONDITIONS

Action 599811

CONDITIONS

Operator: Milestone Environmental Services, LLC 840 Gessner Road Houston, TX 77024	OGRID: 328435
	Action Number: 599811
	Action Type: [C-137] Non-Fee SWMF Submittal (SWMF NON-FEE SUBMITTAL)

CONDITIONS

Created By	Condition	Condition Date
joseph.kennedy	None	6/26/2026