

Page 1 of 76
Received by OGD: 4/4/2023 8:23:21 AM
Released to Imaging: 4/5/2023 8:29:14 AM

District I
1625 N. French Dr., Hobbs, NM 88240
District II
311 S. First St., Artesia, NM 88210
District III
1000 Rio Brazos Road, Aztec, NM 87410
District IV
1220 S. St. Francis Dr., Santa Fe, NM 87505

State of New Mexico
Energy Minerals and Natural Resources
Oil Conservation Division
1220 South St. Francis Dr.
Santa Fe, NM 87505

Form C-141
Revised April 3, 2017

Submit 1 Copy to appropriate District Office in
accordance with 19.15.29 NMAC.

Release Notification and Corrective Action

OPERATOR

☐ Initial Report ☒ Final Report

Name of Company	OXY USA INC	Contact	WADE DITTRICH
Address	PO BOX 4294; HOUSTON, TX 77210	Telephone No.	575-390-2828
Facility Name	Shell State #3 CTB	Facility Type	BATTERY
Surface Owner	STATE	Mineral Owner	STATE
		API No.	30-025-33246

LOCATION OF RELEASE



Unit Letter	Section	Township	Range	Feet from the	North/South Line	Feet from the	East/West Line	County
F	36	22S	32E					LEA

Latitude N 32.34979 Longitude W 103.62951 NAD83

NATURE OF RELEASE

Type of Release	OIL & PRODUCED WATER	Volume of Release	10 bbls OIL & 10 bbls PRODUCED WATER	Volume Recovered	18 bbls
Source of Release	Power loss caused the tank to spill over	Date and Hour of Occurrence	08/31/2016	Date and Hour of Discovery	
Was Immediate Notice Given?	<input checked="" type="checkbox"/> Yes <input type="checkbox"/> No <input type="checkbox"/> Not Required	If YES, To Whom?	Jamie Keyes, Kristen Lynch- NMOCD		
By Whom?	Kathy Purvis @ BBC International Inc.	Date and Hour	08/31/2016 @ 4:16 pm		
Was a Watercourse Reached?	<input type="checkbox"/> Yes <input checked="" type="checkbox"/> No	If YES, Volume Impacting the Watercourse.			
If a Watercourse was Impacted, Describe Fully.*					
Describe Cause of Problem and Remedial Action Taken.*					
A loss of power caused a tank to spill over and leak 10 bbls of oil and 10 bbls of produced water. A vacuum truck recovered all the free-standing fluids and the power was restored.					
Describe Area Affected and Cleanup Action Taken.*					
The affected area is approximately 250' x 25' both on and off location. Remediation was completed in accordance with the remediation plan approved for the release (IRP-4440) by Olivia Yu on 06-02-2017 and by Amber Groves on 06/20/2017.					

I hereby certify that the information given above is true and complete to the best of my knowledge and understand that pursuant to NMOCD rules and regulations all operators are required to report and/or file certain release notifications and perform corrective actions for releases which may endanger public health or the environment. The acceptance of a C-141 report by the NMOCD marked as "Final Report" does not relieve the operator of liability should their operations have failed to adequately investigate and remediate contamination that pose a threat to ground water, surface water, human health or the environment. In addition, NMOCD acceptance of a C-141 report does not relieve the operator of responsibility for compliance with any other federal, state, or local laws and/or regulations.

Signature: 	OIL CONSERVATION DIVISION		
Printed Name: WADE DITTRICH	Approved by Environmental Specialist: 		
Title: ENVIRONMENTAL SPECIALIST	Approval Date: 4/5/2023	Expiration Date: N/A	
E-mail Address: WADE.DITTRICH@OXY.COM	Conditions of Approval:	Attached <input type="checkbox"/>	
Date: 12-21-17 Phone: 575-390-2828	None		

Attach Additional Sheets If Necessary

Closure Report

Site Description

Site Name:	Shell State #3 CTB
Company:	Oxy Permian Ltd.
Legal Description:	U/L F, Section 36, T22S, R32E
County:	Lea County, NM
GPS Coordinates:	N 32.34979° W 103.62951°

Release Data

Date of Release:	08/31/2016
Type of Release:	Oil and produced water
Source of Release:	Power loss caused tank to spill over
Volume of Release:	10 bbls oil, 10 bbls produced water
Volume Recovered:	18 bbls

Remediation Specifications

Remediation Parameters:	Excavate SP1, SP2, SP3, SP6, SP7, SP10, SP11, SP12 to a depth of 1 foot, Submit laboratory analyses of bottom and sidewall confirmation samples. Scrape surface 6 inches at SP4 & SP5. Excavate SP8 and SP9 to a depth of 2.5 feet. Submit laboratory analyses of bottom and sidewall confirmation samples.	
Remediation Activities:	11/28/2017 to 12/07/2017	
Plan Sent to OCD:	11/01/2016	Email from Cliff Brunson to Kristen Lynch
OCD Approval of Plan:	06/02/2017	Email from Olivia Yu to Casey Summers
Plan Sent to SLO:	06/12/2017	Email from Cliff Brunson to Amber Groves
SLO Approval of Plan:	06/20/2017	Email from Amber Groves to Cliff Brunson

Supporting Documentation

Initial C-141	Signed 09/12/2016
Final C-141	Upon completion
Site Diagram	September 2016
Groundwater Plot	375'
TOPO Maps	September 2016
Lab Summary	09/20/2016-09/21/2016 and 12/05/2017
Lab Analysis	09/20/2016-09/21/2016 and 12/05/2017
Correspondence	Request and approval of remediation plan via email

Request for Closure

Based on the completion of the remediation plan, BBC requests closure approval from NMOCD.

Wade Dittrich, Oxy Permian Ltd.

12/18/2017

District I
1625 N. French Dr., Hobbs, NM 88240
District II
811 S. First St., Artesia, NM 88210
District III
1000 Rio Brazos Road, Aztec, NM 87410
District IV
1220 S. St. Francis Dr., Santa Fe, NM 87505

State of New Mexico
Energy Minerals and Natural Resources

Oil Conservation Division
1220 South St. Francis Dr.
Santa Fe, NM 87505

Form C-141
Revised August 8, 2011

Submit 1 Copy to appropriate District Office in
accordance with 19.15.29 NMAC.

Release Notification and Corrective Action

OPERATOR

☒ Initial Report ☐ Final Report

Name of Company	Oxy Permian Ltd.	Contact	Casey Summers
Address	6 Desta Drive, Midland, TX 79705	Telephone No.	(575) 513-8289
Facility Name	Shell State #3 CTB	Facility Type	Battery
Surface Owner	State	Mineral Owner	API No. 30-025-33246

LOCATION OF RELEASE

Unit Letter	Section	Township	Range	Feet from the	North/South Line	Feet from the	East/West Line	County
F	36	22S	32E					Lea County, NM

Latitude N 32.34979° Longitude W 103.62951°

NATURE OF RELEASE

Type of Release	Oil and Produced water	Volume of Release	10 bbls oil, 10 bbls produced water	Volume Recovered	18 bbls
Source of Release	Power loss caused the tank to spill over	Date and Hour of Occurrence	08/31/2016	Date and Hour of Discovery	
Was Immediate Notice Given?	<input checked="" type="checkbox"/> Yes <input type="checkbox"/> No <input type="checkbox"/> Not Required	If YES, To Whom?	Jamie Keyes, Kristen Lynch- NMOCD		
By Whom?	Kathy Purvis @ BBC International Inc.	Date and Hour	08/31/2016 @ 4:16 pm		
Was a Watercourse Reached?	<input type="checkbox"/> Yes <input checked="" type="checkbox"/> No	If YES, Volume Impacting the Watercourse.			

If a Watercourse was Impacted, Describe Fully.*

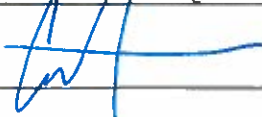
Describe Cause of Problem and Remedial Action Taken.*

A loss of power caused a tank to spill over and leak 10 bbls of oil and 10 bbls of produced water. A vacuum truck recovered all the free-standing fluids and the power was restored.

Describe Area Affected and Cleanup Action Taken.*

The affected area is approximately 250' x 25' both on and off location. Remediation will be completed in accordance with an approved remediation plan from NMOCD.

I hereby certify that the information given above is true and complete to the best of my knowledge and understand that pursuant to NMOCD rules and regulations all operators are required to report and/or file certain release notifications and perform corrective actions for releases which may endanger public health or the environment. The acceptance of a C-141 report by the NMOCD marked as "Final Report" does not relieve the operator of liability should their operations have failed to adequately investigate and remediate contamination that pose a threat to ground water, surface water, human health or the environment. In addition, NMOCD acceptance of a C-141 report does not relieve the operator of responsibility for compliance with any other federal, state, or local laws and/or regulations.

Signature:				OIL CONSERVATION DIVISION	
Printed Name:	Casey Summers	Approved by Environmental Specialist:			
Title:	NM Environmental Advisor	Approval Date:	Expiration Date:		
E-mail Address:	Casey_Summers@oxy.com	Conditions of Approval:			Attached <input type="checkbox"/>
Date:	9-12-16	Phone:	(575) 513-8289		

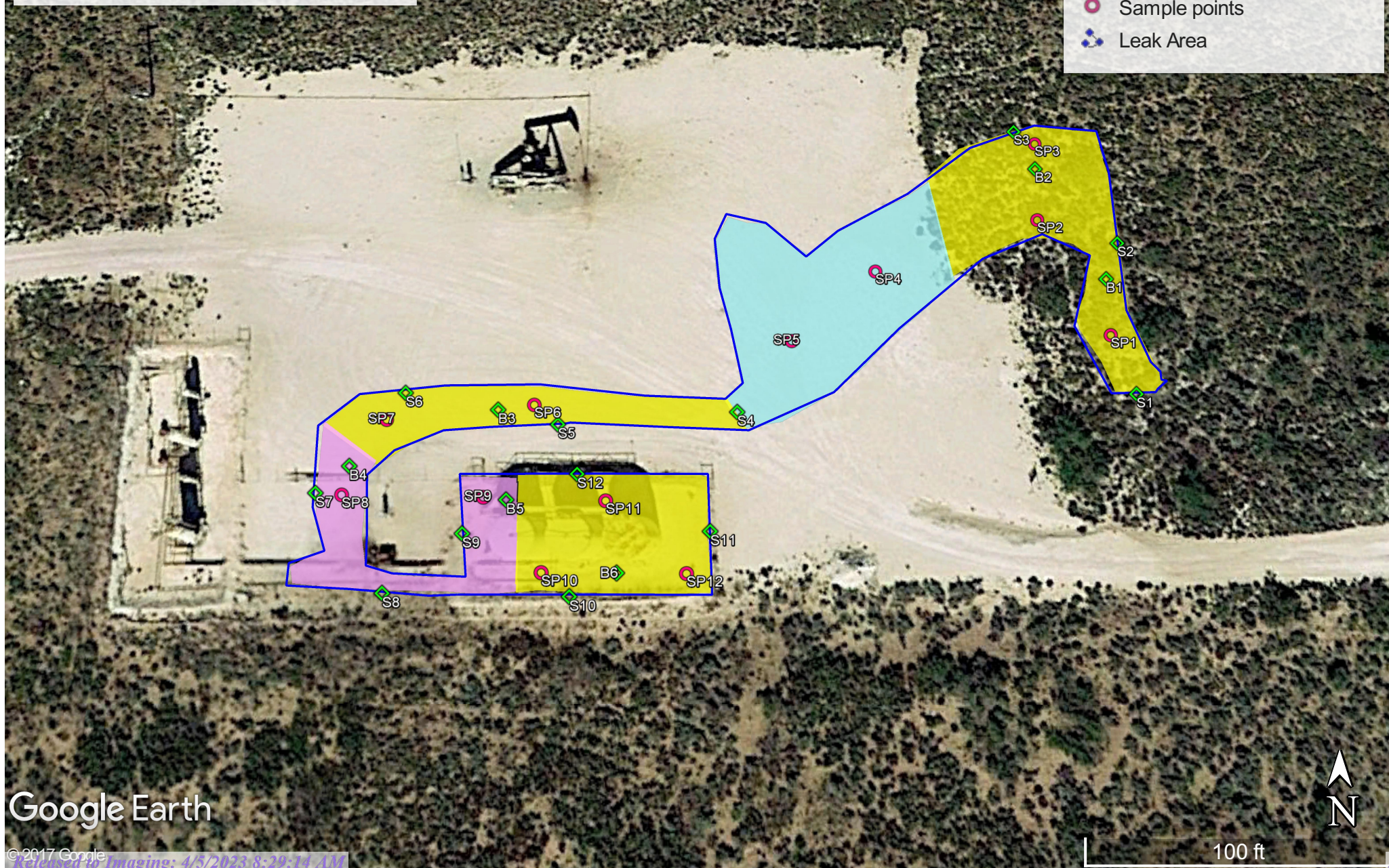
Attach Additional Sheets If Necessary

Oxy, Shell State #3 CTB

Leak date: 08/31/2016
Lea County, NM
API# 30-025-33246
1RP-4440

Legend

- 1 ft Excavation
- 2.5 ft Excavation
- 6 In. Surface scrape
- Confirmation sample points
- Sample points
- Leak Area



Oxy, Shell State #3 CTB

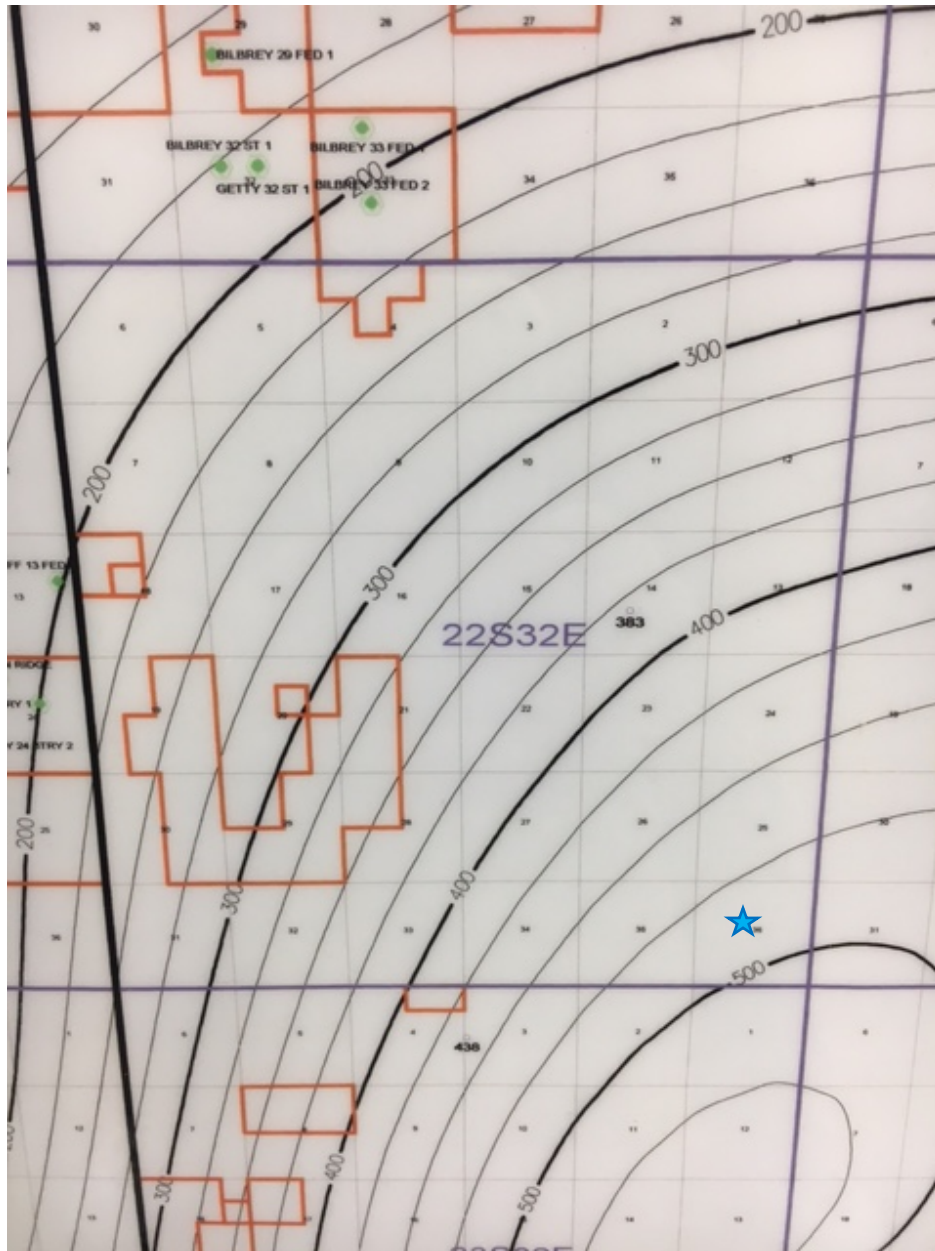
Sample points, hand auger

SP1, N 32.34993 W-103.62880
SP2, N 32.35006 W-103.62887
SP3, N 32.35014 W-103.62887
SP4, N 32.35000 W-103.62907
SP5, N 32.34993 W-103.62917
SP6, N 32.34986 W-103.62947
SP7, N 32.34985 W-103.62963
SP8, N 32.34977 W-103.62968
SP9, N 32.34977 W-103.62952
SP10, N 32.34970 W-103.62945
SP11, N 32.34977 W-103.62938
SP12, N 32.34970 W-103.62929

Confirmation sample points, hand auger

B1, N 32.34999 W-103.62880	S6, N 32.34987 W-103.62961
B2, N 32.35011 W-103.62887	S7, N 32.34977 W-103.62971
B3, N 32.34985 W-103.62951	S8, N 32.34968 W-103.62962
B4, N 32.34980 W-103.62967	S9, N 32.34973 W-103.62954
B5, N 32.34977 W-103.62949	S10, N 32.34967 W-103.62942
B6, N 32.34970 W-103.62937	S11, N 32.34974 W-103.62926
S1, N 32.34987 W-103.62877	S12, N 32.34979 W-103.62941
S2, N 32.35003 W-103.62878	
S3, N 32.35015 W-103.62890	
S4, N 32.34985 W-103.62923	
S5, N 32.34984 W-103.62944	

Oxy, Shell State #3 CTB
U/L F, Section 36, T22S, R32E
Groundwater: 475'





New Mexico Office of the State Engineer

Water Column/Average Depth to Water

(quarters are 1=NW 2=NE 3=SW 4=SE)
(quarters are smallest to largest) (NAD83 UTM in meters)

No records found.

UTMNAD83 Radius Search (in meters):

Easting (X): 628870 Northing (Y): 3580064 Radius: 1700

The data is furnished by the NMOSE/ISC and is accepted by the recipient with the expressed understanding that the OSE/ISC make no warranties, expressed or implied, concerning the accuracy, completeness, reliability, usability, or suitability for any particular purpose of the data.

12/18/17 2:24 PM

WATER COLUMN/ AVERAGE
DEPTH TO WATER

Public Land Survey System (PLSS)					
Q64:	Q16: SE	Q4: NW	Sec: 36	Tws: 22S	Rng: 32E

State Plane Coordinate System - NAD27					
X:	ft	Y:	ft	Zone:	

State Plane Coordinate System - NAD83					
X:	ft	Y:	ft	Zone:	

Degrees/Minutes/Seconds					
Longitude (X):	Degrees:	°	Minutes:	'	Seconds: "
Latitude (Y):	Degrees:	°	Minutes:	'	Seconds: "

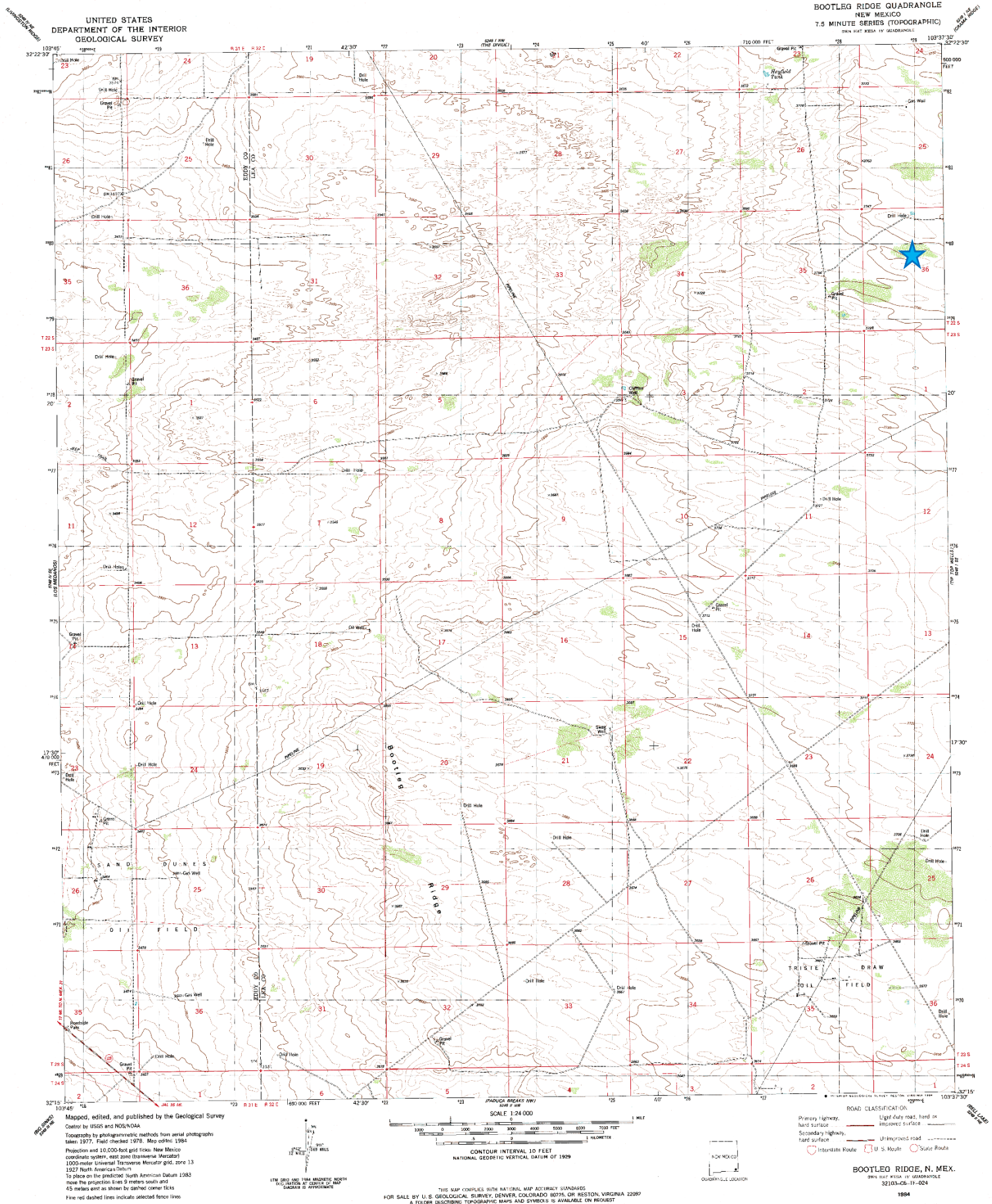
UTM - NAD27					
Easting (X):	mtrs	Northing (Y):	mtrs	Zone:	

SUBMIT

All Conversion Results are displayed as <u>NAD 1983 UTM Zone 13</u>					
Easting (X):	628870.0	mtrs	Northing (Y):	3580064.0	mtrs
~~ Please keep screen open to copy UTM values for Reports. ~~					

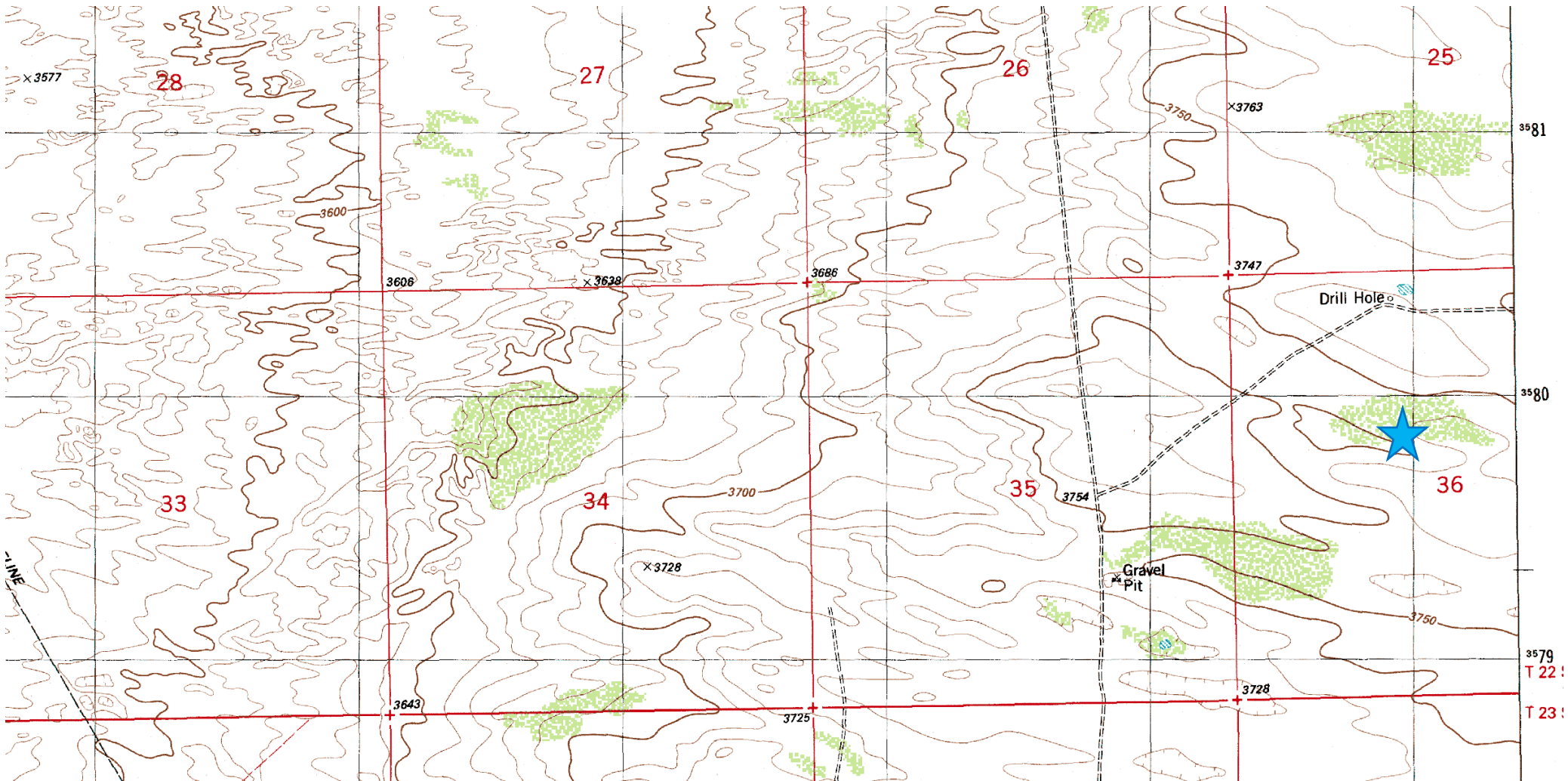
Oxy

Shell State #3 CTB



Oxy

Shell State #3 CTB



Laboratory Analytical Results Summary
Shell State #3 CTB

		Sample	SP1 @ Surface	SP1 @ 1'
Analyte	Method	Date	9/20/16	9/20/16
			mg/Kg	mg/Kg
Benzene	BTEX 8021B		<0.050	<0.050
Toluene	BTEX 8021B		0.156	<0.050
Ethylbenzene	BTEX 8021B		0.14	<0.050
Total Xylenes	BTEX 8021B		0.551	<0.150
Total BTEX	BTEX 8021B		0.847	<0.300
Chloride	SM4500Cl-B		32	<16.0
GRO	TPH 8015M		<200	<10.0
DRO	TPH 8015M		23900	<10.0

		Sample	SP5 @ Surface
Analyte	Method	Date	9/20/16
			mg/Kg
Benzene	BTEX 8021B		<0.050
Toluene	BTEX 8021B		<0.050
Ethylbenzene	BTEX 8021B		<0.050
Total Xylenes	BTEX 8021B		<0.150
Total BTEX	BTEX 8021B		<0.300
Chloride	SM4500Cl-B		64
GRO	TPH 8015M		<10.0
DRO	TPH 8015M		14.2

		Sample	SP9 @ Surface	SP9 @ 1'	SP9 @ 2'	SP9 @ 3'
Analyte	Method	Date	9/21/16	9/21/16	9/21/16	9/21/16
			mg/Kg	mg/Kg	mg/Kg	mg/Kg
Benzene	BTEX 8021B		<0.050	<0.050	N/A	N/A
Toluene	BTEX 8021B		0.091	<0.050	N/A	N/A
Ethylbenzene	BTEX 8021B		0.111	<0.050	N/A	N/A
Total Xylenes	BTEX 8021B		0.278	<0.150	N/A	N/A
Total BTEX	BTEX 8021B		0.481	<0.300	N/A	N/A
Chloride	SM4500Cl-B		16	352	992	160
GRO	TPH 8015M		<100	<10.0	N/A	N/A
DRO	TPH 8015M		9460	<10.0	N/A	N/A

		Sample	SP2 @ Surface	SP2 @ 1'
Analyte	Method	Date	9/20/16	9/20/16
			mg/Kg	mg/Kg
Benzene	BTEX 8021B		<0.050	<0.050
Toluene	BTEX 8021B		0.185	<0.050
Ethylbenzene	BTEX 8021B		0.15	<0.050
Total Xylenes	BTEX 8021B		0.59	<0.150
Total BTEX	BTEX 8021B		0.924	<0.300
Chloride	SM4500Cl-B		32	<16.0
GRO	TPH 8015M		<200	<10.0
DRO	TPH 8015M		22700	<10.0

		Sample	SP6 @ Surface	SP6 @ 1'
Analyte	Method	Date	9/20/16	9/20/16
			mg/Kg	mg/Kg
Benzene	BTEX 8021B		<0.050	<0.050
Toluene	BTEX 8021B		0.144	<0.050
Ethylbenzene	BTEX 8021B		0.075	<0.050
Total Xylenes	BTEX 8021B		0.33	<0.150
Total BTEX	BTEX 8021B		0.586	<0.300
Chloride	SM4500Cl-B		1390	96
GRO	TPH 8015M		<50.0	<10.0
DRO	TPH 8015M		9470	<10.0

		Sample	SP10 @ Surface	SP10 @ 1'	SP10 @ 2'	SP10 @ 3'
Analyte	Method	Date	9/21/16	9/21/16	9/21/16	9/21/16
			mg/Kg	mg/Kg	mg/Kg	mg/Kg
Benzene	BTEX 8021B		<0.050	<0.050	N/A	N/A
Toluene	BTEX 8021B		0.095	<0.050	N/A	N/A
Ethylbenzene	BTEX 8021B		0.116	<0.050	N/A	N/A
Total Xylenes	BTEX 8021B		0.314	<0.150	N/A	N/A
Total BTEX	BTEX 8021B		0.525	<0.300	N/A	N/A
Chloride	SM4500Cl-B		16	336	320	224
GRO	TPH 8015M		<100	<10.0	N/A	N/A
DRO	TPH 8015M		10800	12.4	N/A	N/A

		Sample	SP3 @ Surface	SP3 @ 1'
Analyte	Method	Date	9/20/16	9/20/16
			mg/Kg	mg/Kg
Benzene	BTEX 8021B		<0.050	<0.050
Toluene	BTEX 8021B		0.091	<0.050
Ethylbenzene	BTEX 8021B		0.065	<0.050
Total Xylenes	BTEX 8021B		0.251	<0.150
Total BTEX	BTEX 8021B		0.408	<0.300
Chloride	SM4500Cl-B		<16.0	<16.0
GRO	TPH 8015M		<200	<10.0
DRO	TPH 8015M		8000	<10.0

		Sample	SP7 @ Surface	SP7 @ 1'
Analyte	Method	Date	9/20/16	9/20/16
			mg/Kg	mg/Kg
Benzene	BTEX 8021B		<0.050	<0.050
Toluene	BTEX 8021B		0.141	<0.050
Ethylbenzene	BTEX 8021B		0.086	<0.050
Total Xylenes	BTEX 8021B		0.355	<0.150
Total BTEX	BTEX 8021B		0.582	<0.300
Chloride	SM4500Cl-B		176	<16.0
GRO	TPH 8015M		<50.0	<10.0
DRO	TPH 8015M		8100	<10.0

		Sample	SP11 @ Surface	SP11 @ 1'	SP11 @ 2'	SP11 @ 3'
Analyte	Method	Date	9/21/16	9/21/16	9/21/16	9/21/16
			mg/Kg	mg/Kg	mg/Kg	mg/Kg
Benzene	BTEX 8021B		<0.050	<0.050	N/A	N/A
Toluene	BTEX 8021B		0.187	<0.050	N/A	N/A
Ethylbenzene	BTEX 8021B		0.238	<0.050	N/A	N/A
Total Xylenes	BTEX 8021B		0.848	<0.150	N/A	N/A
Total BTEX	BTEX 8021B		1.27	<0.300	N/A	N/A
Chloride	SM4500Cl-B		96	960	320	32
GRO	TPH 8015M		<100	<10.0	N/A	N/A
DRO	TPH 8015M		7630	45.2	N/A	N/A

		Sample	SP4 @ Surface
Analyte	Method	Date	9/20/16
			mg/Kg
Benzene	BTEX 8021B		<0.050
Toluene	BTEX 8021B		<0.050
Ethylbenzene	BTEX 8021B		<0.050
Total Xylenes	BTEX 8021B		<0.150
Total BTEX	BTEX 8021B		<0.300
Chloride	SM4500Cl-B		64
GRO	TPH 8015M		<10.0
DRO	TPH 8015M		<10.0

		Sample	SP8 @ Surface	SP8 @ 1'	SP8 @ 2'	SP8 @ 3'
Analyte	Method	Date	9/21/16	9/21/16	9/21/16	9/21/16
			mg/Kg	mg/Kg	mg/Kg	mg/Kg
Benzene	BTEX 8021B		<0.050	<0.050	N/A	N/A
Toluene	BTEX 8021B		0.096	<0.050	N/A	N/A
Ethylbenzene	BTEX 8021B		<0.050	<0.050	N/A	N/A
Total Xylenes	BTEX 8021B		<0.150	<0.150	N/A	N/A
Total BTEX	BTEX 8021B		<0.300	<0.300	N/A	N/A
Chloride	SM4500Cl-B		480	2040	1960	32
GRO	TPH 8015M		<50.0	<10.0	N/A	N/A
DRO	TPH 8015M		1970	21.9	N/A	N/A

		Sample	SP12 @ Surface	SP12 @ 1'	SP12 @ 2'	SP12 @ 3'
Analyte	Method	Date	9/21/16	9/21/16	9/21/16	9/21/16
			mg/Kg	mg/Kg	mg/Kg	mg/Kg
Benzene	BTEX 8021B		<0.050	<0.050	N/A	N/A
Toluene	BTEX 8021B		0.259	<0.050	N/A	N/A
Ethylbenzene	BTEX 8021B		0.211	<0.050	N/A	N/A
Total Xylenes	BTEX 8021B		0.727	<0.150	N/A	N/A
Total BTEX	BTEX 8021B		1.2	<0.300	N/A	N/A
Chloride	SM4500Cl-B		96	384	32	256
GRO	TPH 8015M		<100	<10.0	N/A	N/A
DRO	TPH 8015M		9250	<10.0	N/A	N/A

		Sample ID	SIDEWALL 1	SIDEWALL 2	SIDEWALL 3	SIDEWALL 4	SIDEWALL 5	SIDEWALL 6	SIDEWALL 7	SIDEWALL 8	SIDEWALL 9	SIDEWALL 10	SIDEWALL 11	SIDEWALL 12
Analyte	Method	Date	12/5/17	12/5/17	12/5/17	12/5/17	12/5/17	12/5/17	12/5/17	12/5/17	12/5/17	12/5/17	12/5/17	12/5/17
			mg/kg	mg/kg	mg/kg	mg/kg	mg/kg	mg/kg	mg/kg	mg/kg	mg/kg	mg/kg	mg/kg	mg/kg
Chloride	SM4500Cl-B		<16.0	<16.0	96	<16.0	96	16	32	80	16	96	16	<16.0

		Sample ID	BOTTOM 1	BOTTOM 2	BOTTOM 3	BOTTOM 4	BOTTOM 5	BOTTOM 6
Analyte	Method	Date	12/5/17	12/5/17	12/5/17	12/5/17	12/5/17	12/5/17
			mg/kg	mg/kg	mg/kg	mg/kg	mg/kg	mg/kg
Chloride	SM4500Cl-B		64	32	32	48	48	32



PHONE (575) 393-2326 ° 101 E. MARLAND ° HOBBS, NM 88240

September 28, 2016

Cliff Brunson

BBC International, Inc.

P.O. Box 805

Hobbs, NM 88241

RE: SHELL STATE #3 CTB

Enclosed are the results of analyses for samples received by the laboratory on 09/22/16 15:00.

Cardinal Laboratories is accredited through Texas NELAP under certificate number T104704398-16-8. Accreditation applies to drinking water, non-potable water and solid and chemical materials. All accredited analytes are denoted by an asterisk (*). For a complete list of accredited analytes and matrices visit the TCEQ website at www.tceq.texas.gov/field/qa/lab_accred_certif.html.

Cardinal Laboratories is accredited through the State of Colorado Department of Public Health and Environment for:

Method EPA 552.2	Haloacetic Acids (HAA-5)
Method EPA 524.2	Total Trihalomethanes (TTHM)
Method EPA 524.4	Regulated VOCs (V1, V2, V3)

Accreditation applies to public drinking water matrices.

This report meets NELAP requirements and is made up of a cover page, analytical results, and a copy of the original chain-of-custody. If you have any questions concerning this report, please feel free to contact me.

Sincerely,

A handwritten signature in black ink that reads "Celey D. Keene". The signature is written in a cursive style with a large, stylized 'C' and 'K'.

Celey D. Keene

Lab Director/Quality Manager



PHONE (575) 393-2326 ° 101 E. MARLAND ° HOBBS, NM 88240

Analytical Results For:

BBC International, Inc.
 Cliff Brunson
 P.O. Box 805
 Hobbs NM, 88241
 Fax To: (575) 397-0397

Received:	09/22/2016	Sampling Date:	09/20/2016
Reported:	09/28/2016	Sampling Type:	Soil
Project Name:	SHELL STATE #3 CTB	Sampling Condition:	Cool & Intact
Project Number:	NONE GIVEN	Sample Received By:	Jodi Henson
Project Location:	NOT GIVEN		

Sample ID: SP 1 @ SURFACE (H602134-01)

BTX 8021B		mg/kg		Analyzed By: MS					
Analyte	Result	Reporting Limit	Analyzed	Method Blank	BS	% Recovery	True Value QC	RPD	Qualifier
Benzene*	<0.050	0.050	09/26/2016	ND	2.17	108	2.00	2.00	
Toluene*	0.156	0.050	09/26/2016	ND	2.21	110	2.00	1.60	
Ethylbenzene*	0.140	0.050	09/26/2016	ND	2.16	108	2.00	1.58	
Total Xylenes*	0.551	0.150	09/26/2016	ND	6.59	110	6.00	1.14	
Total BTX	0.847	0.300	09/26/2016	ND					

Surrogate: 4-Bromofluorobenzene (PID) 111 % 73.6-140

Chloride, SM4500Cl-B		mg/kg		Analyzed By: AC					
Analyte	Result	Reporting Limit	Analyzed	Method Blank	BS	% Recovery	True Value QC	RPD	Qualifier
Chloride	32.0	16.0	09/27/2016	ND	432	108	400	0.00	

TPH 8015M		mg/kg		Analyzed By: MS						S-06
Analyte	Result	Reporting Limit	Analyzed	Method Blank	BS	% Recovery	True Value QC	RPD	Qualifier	
GRO C6-C10	<200	200	09/23/2016	ND	199	99.4	200	2.82		
DRO >C10-C28	23900	200	09/23/2016	ND	212	106	200	5.31		

Surrogate: 1-Chlorooctane 89.6 % 35-147

Surrogate: 1-Chlorooctadecane 852 % 28-171

Cardinal Laboratories

*=Accredited Analyte

PLEASE NOTE: Liability and Damages. Cardinal's liability and client's exclusive remedy for any claim arising, whether based in contract or tort, shall be limited to the amount paid by client for analyses. All claims, including those for negligence and any other cause whatsoever shall be deemed waived unless made in writing and received by Cardinal within thirty (30) days after completion of the applicable service. In no event shall Cardinal be liable for incidental or consequential damages, including, without limitation, business interruptions, loss of use, or loss of profits incurred by client, its subsidiaries, affiliates or successors arising out of or related to the performance of the services hereunder by Cardinal, regardless of whether such claim is based upon any of the above stated reasons or otherwise. Results relate only to the samples identified above. This report shall not be reproduced except in full with written approval of Cardinal Laboratories.

Celey D. Keene, Lab Director/Quality Manager



PHONE (575) 393-2326 ° 101 E. MARLAND ° HOBBS, NM 88240

Analytical Results For:

BBC International, Inc.
 Cliff Brunson
 P.O. Box 805
 Hobbs NM, 88241
 Fax To: (575) 397-0397

Received:	09/22/2016	Sampling Date:	09/20/2016
Reported:	09/28/2016	Sampling Type:	Soil
Project Name:	SHELL STATE #3 CTB	Sampling Condition:	Cool & Intact
Project Number:	NONE GIVEN	Sample Received By:	Jodi Henson
Project Location:	NOT GIVEN		

Sample ID: SP 1 @ 1' (H602134-02)

BTX 8021B			mg/kg							
			Analyzed By: MS							
Analyte	Result	Reporting Limit	Analyzed	Method Blank	BS	% Recovery	True Value QC	RPD	Qualifier	
Benzene*	<0.050	0.050	09/26/2016	ND	2.17	108	2.00	2.00		
Toluene*	<0.050	0.050	09/26/2016	ND	2.21	110	2.00	1.60		
Ethylbenzene*	<0.050	0.050	09/26/2016	ND	2.16	108	2.00	1.58		
Total Xylenes*	<0.150	0.150	09/26/2016	ND	6.59	110	6.00	1.14		
Total BTX	<0.300	0.300	09/26/2016	ND						

Surrogate: 4-Bromofluorobenzene (PID) 97.5 % 73.6-140

Chloride, SM4500CI-B			mg/kg							
			Analyzed By: AC							
Analyte	Result	Reporting Limit	Analyzed	Method Blank	BS	% Recovery	True Value QC	RPD	Qualifier	
Chloride	<16.0	16.0	09/27/2016	ND	432	108	400	0.00		

TPH 8015M			mg/kg							
			Analyzed By: MS							
Analyte	Result	Reporting Limit	Analyzed	Method Blank	BS	% Recovery	True Value QC	RPD	Qualifier	
GRO C6-C10	<10.0	10.0	09/23/2016	ND	199	99.4	200	2.82		
DRO >C10-C28	<10.0	10.0	09/23/2016	ND	212	106	200	5.31		

Surrogate: 1-Chlorooctane 83.3 % 35-147

Surrogate: 1-Chlorooctadecane 97.5 % 28-171

Cardinal Laboratories

*=Accredited Analyte

PLEASE NOTE: Liability and Damages. Cardinal's liability and client's exclusive remedy for any claim arising, whether based in contract or tort, shall be limited to the amount paid by client for analyses. All claims, including those for negligence and any other cause whatsoever shall be deemed waived unless made in writing and received by Cardinal within thirty (30) days after completion of the applicable service. In no event shall Cardinal be liable for incidental or consequential damages, including, without limitation, business interruptions, loss of use, or loss of profits incurred by client, its subsidiaries, affiliates or successors arising out of or related to the performance of the services hereunder by Cardinal, regardless of whether such claim is based upon any of the above stated reasons or otherwise. Results relate only to the samples identified above. This report shall not be reproduced except in full with written approval of Cardinal Laboratories.

Celey D. Keene, Lab Director/Quality Manager



PHONE (575) 393-2326 ° 101 E. MARLAND ° HOBBS, NM 88240

Analytical Results For:

BBC International, Inc.
 Cliff Brunson
 P.O. Box 805
 Hobbs NM, 88241
 Fax To: (575) 397-0397

Received:	09/22/2016	Sampling Date:	09/20/2016
Reported:	09/28/2016	Sampling Type:	Soil
Project Name:	SHELL STATE #3 CTB	Sampling Condition:	Cool & Intact
Project Number:	NONE GIVEN	Sample Received By:	Jodi Henson
Project Location:	NOT GIVEN		

Sample ID: SP 2 @ SURFACE (H602134-03)

BTX 8021B		mg/kg		Analyzed By: MS					
Analyte	Result	Reporting Limit	Analyzed	Method Blank	BS	% Recovery	True Value QC	RPD	Qualifier
Benzene*	<0.050	0.050	09/26/2016	ND	2.17	108	2.00	2.00	
Toluene*	0.185	0.050	09/26/2016	ND	2.21	110	2.00	1.60	
Ethylbenzene*	0.150	0.050	09/26/2016	ND	2.16	108	2.00	1.58	
Total Xylenes*	0.590	0.150	09/26/2016	ND	6.59	110	6.00	1.14	
Total BTX	0.924	0.300	09/26/2016	ND					

Surrogate: 4-Bromofluorobenzene (PID) 110 % 73.6-140

Chloride, SM4500CI-B		mg/kg		Analyzed By: AC						
Analyte	Result	Reporting Limit	Analyzed	Method Blank	BS	% Recovery	True Value QC	RPD	Qualifier	
Chloride	32.0	16.0	09/27/2016	ND	432	108	400	0.00		

TPH 8015M		mg/kg		Analyzed By: MS				S-06	
Analyte	Result	Reporting Limit	Analyzed	Method Blank	BS	% Recovery	True Value QC	RPD	Qualifier
GRO C6-C10	<200	200	09/24/2016	ND	199	99.4	200	2.82	
DRO >C10-C28	22700	200	09/24/2016	ND	212	106	200	5.31	

Surrogate: 1-Chlorooctane 90.0 % 35-147

Surrogate: 1-Chlorooctadecane 830 % 28-171

Cardinal Laboratories

*=Accredited Analyte

PLEASE NOTE: Liability and Damages. Cardinal's liability and client's exclusive remedy for any claim arising, whether based in contract or tort, shall be limited to the amount paid by client for analyses. All claims, including those for negligence and any other cause whatsoever shall be deemed waived unless made in writing and received by Cardinal within thirty (30) days after completion of the applicable service. In no event shall Cardinal be liable for incidental or consequential damages, including, without limitation, business interruptions, loss of use, or loss of profits incurred by client, its subsidiaries, affiliates or successors arising out of or related to the performance of the services hereunder by Cardinal, regardless of whether such claim is based upon any of the above stated reasons or otherwise. Results relate only to the samples identified above. This report shall not be reproduced except in full with written approval of Cardinal Laboratories.

Celey D. Keene, Lab Director/Quality Manager



PHONE (575) 393-2326 ° 101 E. MARLAND ° HOBBS, NM 88240

Analytical Results For:

BBC International, Inc.
 Cliff Brunson
 P.O. Box 805
 Hobbs NM, 88241
 Fax To: (575) 397-0397

Received:	09/22/2016	Sampling Date:	09/20/2016
Reported:	09/28/2016	Sampling Type:	Soil
Project Name:	SHELL STATE #3 CTB	Sampling Condition:	Cool & Intact
Project Number:	NONE GIVEN	Sample Received By:	Jodi Henson
Project Location:	NOT GIVEN		

Sample ID: SP 2 @ 1' (H602134-04)

BTEx 8021B		mg/kg		Analyzed By: MS					
Analyte	Result	Reporting Limit	Analyzed	Method Blank	BS	% Recovery	True Value QC	RPD	Qualifier
Benzene*	<0.050	0.050	09/26/2016	ND	2.17	108	2.00	2.00	
Toluene*	<0.050	0.050	09/26/2016	ND	2.21	110	2.00	1.60	
Ethylbenzene*	<0.050	0.050	09/26/2016	ND	2.16	108	2.00	1.58	
Total Xylenes*	<0.150	0.150	09/26/2016	ND	6.59	110	6.00	1.14	
Total BTEx	<0.300	0.300	09/26/2016	ND					

Surrogate: 4-Bromofluorobenzene (PID) 98.5 % 73.6-140

Chloride, SM4500CI-B		mg/kg		Analyzed By: AC						
Analyte	Result	Reporting Limit	Analyzed	Method Blank	BS	% Recovery	True Value QC	RPD	Qualifier	
Chloride	<16.0	16.0	09/27/2016	ND	432	108	400	0.00		

TPH 8015M		mg/kg		Analyzed By: MS					
Analyte	Result	Reporting Limit	Analyzed	Method Blank	BS	% Recovery	True Value QC	RPD	Qualifier
GRO C6-C10	<10.0	10.0	09/24/2016	ND	199	99.4	200	2.82	
DRO >C10-C28	<10.0	10.0	09/24/2016	ND	212	106	200	5.31	

Surrogate: 1-Chlorooctane 85.2 % 35-147

Surrogate: 1-Chlorooctadecane 107 % 28-171

Cardinal Laboratories

*=Accredited Analyte

PLEASE NOTE: Liability and Damages. Cardinal's liability and client's exclusive remedy for any claim arising, whether based in contract or tort, shall be limited to the amount paid by client for analyses. All claims, including those for negligence and any other cause whatsoever shall be deemed waived unless made in writing and received by Cardinal within thirty (30) days after completion of the applicable service. In no event shall Cardinal be liable for incidental or consequential damages, including, without limitation, business interruptions, loss of use, or loss of profits incurred by client, its subsidiaries, affiliates or successors arising out of or related to the performance of the services hereunder by Cardinal, regardless of whether such claim is based upon any of the above stated reasons or otherwise. Results relate only to the samples identified above. This report shall not be reproduced except in full with written approval of Cardinal Laboratories.

Celey D. Keene, Lab Director/Quality Manager



PHONE (575) 393-2326 ° 101 E. MARLAND ° HOBBS, NM 88240

Analytical Results For:

BBC International, Inc.
 Cliff Brunson
 P.O. Box 805
 Hobbs NM, 88241
 Fax To: (575) 397-0397

Received:	09/22/2016	Sampling Date:	09/20/2016
Reported:	09/28/2016	Sampling Type:	Soil
Project Name:	SHELL STATE #3 CTB	Sampling Condition:	Cool & Intact
Project Number:	NONE GIVEN	Sample Received By:	Jodi Henson
Project Location:	NOT GIVEN		

Sample ID: SP 3 @ SURFACE (H602134-05)

BTX 8021B		mg/kg		Analyzed By: MS					
Analyte	Result	Reporting Limit	Analyzed	Method Blank	BS	% Recovery	True Value QC	RPD	Qualifier
Benzene*	<0.050	0.050	09/26/2016	ND	2.17	108	2.00	2.00	
Toluene*	0.091	0.050	09/26/2016	ND	2.21	110	2.00	1.60	
Ethylbenzene*	0.065	0.050	09/26/2016	ND	2.16	108	2.00	1.58	
Total Xylenes*	0.251	0.150	09/26/2016	ND	6.59	110	6.00	1.14	
Total BTX	0.408	0.300	09/26/2016	ND					

Surrogate: 4-Bromofluorobenzene (PID) 98.7 % 73.6-140

Chloride, SM4500Cl-B		mg/kg		Analyzed By: AC						
Analyte	Result	Reporting Limit	Analyzed	Method Blank	BS	% Recovery	True Value QC	RPD	Qualifier	
Chloride	<16.0	16.0	09/27/2016	ND	432	108	400	0.00		

TPH 8015M		mg/kg		Analyzed By: MS				S-06	
Analyte	Result	Reporting Limit	Analyzed	Method Blank	BS	% Recovery	True Value QC	RPD	Qualifier
GRO C6-C10	<200	200	09/24/2016	ND	199	99.4	200	2.82	
DRO >C10-C28	8000	200	09/24/2016	ND	212	106	200	5.31	

Surrogate: 1-Chlorooctane 68.9 % 35-147

Surrogate: 1-Chlorooctadecane 295 % 28-171

Cardinal Laboratories

*=Accredited Analyte

PLEASE NOTE: Liability and Damages. Cardinal's liability and client's exclusive remedy for any claim arising, whether based in contract or tort, shall be limited to the amount paid by client for analyses. All claims, including those for negligence and any other cause whatsoever shall be deemed waived unless made in writing and received by Cardinal within thirty (30) days after completion of the applicable service. In no event shall Cardinal be liable for incidental or consequential damages, including, without limitation, business interruptions, loss of use, or loss of profits incurred by client, its subsidiaries, affiliates or successors arising out of or related to the performance of the services hereunder by Cardinal, regardless of whether such claim is based upon any of the above stated reasons or otherwise. Results relate only to the samples identified above. This report shall not be reproduced except in full with written approval of Cardinal Laboratories.

Celey D. Keene, Lab Director/Quality Manager



PHONE (575) 393-2326 ° 101 E. MARLAND ° HOBBS, NM 88240

Analytical Results For:

BBC International, Inc.
 Cliff Brunson
 P.O. Box 805
 Hobbs NM, 88241
 Fax To: (575) 397-0397

Received:	09/22/2016	Sampling Date:	09/20/2016
Reported:	09/28/2016	Sampling Type:	Soil
Project Name:	SHELL STATE #3 CTB	Sampling Condition:	Cool & Intact
Project Number:	NONE GIVEN	Sample Received By:	Jodi Henson
Project Location:	NOT GIVEN		

Sample ID: SP 3 @ 1' (H602134-06)

BTEx 8021B		mg/kg		Analyzed By: MS						
Analyte	Result	Reporting Limit	Analyzed	Method Blank	BS	% Recovery	True Value QC	RPD	Qualifier	
Benzene*	<0.050	0.050	09/26/2016	ND	2.17	108	2.00	2.00		
Toluene*	<0.050	0.050	09/26/2016	ND	2.21	110	2.00	1.60		
Ethylbenzene*	<0.050	0.050	09/26/2016	ND	2.16	108	2.00	1.58		
Total Xylenes*	<0.150	0.150	09/26/2016	ND	6.59	110	6.00	1.14		
Total BTEx	<0.300	0.300	09/26/2016	ND						

Surrogate: 4-Bromofluorobenzene (PID) 98.6 % 73.6-140

Chloride, SM4500CI-B		mg/kg		Analyzed By: AC						
Analyte	Result	Reporting Limit	Analyzed	Method Blank	BS	% Recovery	True Value QC	RPD	Qualifier	
Chloride	<16.0	16.0	09/27/2016	ND	432	108	400	0.00		

TPH 8015M		mg/kg		Analyzed By: MS					
Analyte	Result	Reporting Limit	Analyzed	Method Blank	BS	% Recovery	True Value QC	RPD	Qualifier
GRO C6-C10	<10.0	10.0	09/24/2016	ND	199	99.4	200	2.82	
DRO >C10-C28	<10.0	10.0	09/24/2016	ND	212	106	200	5.31	

Surrogate: 1-Chlorooctane 87.1 % 35-147

Surrogate: 1-Chlorooctadecane 104 % 28-171

Cardinal Laboratories

*=Accredited Analyte

PLEASE NOTE: Liability and Damages. Cardinal's liability and client's exclusive remedy for any claim arising, whether based in contract or tort, shall be limited to the amount paid by client for analyses. All claims, including those for negligence and any other cause whatsoever shall be deemed waived unless made in writing and received by Cardinal within thirty (30) days after completion of the applicable service. In no event shall Cardinal be liable for incidental or consequential damages, including, without limitation, business interruptions, loss of use, or loss of profits incurred by client, its subsidiaries, affiliates or successors arising out of or related to the performance of the services hereunder by Cardinal, regardless of whether such claim is based upon any of the above stated reasons or otherwise. Results relate only to the samples identified above. This report shall not be reproduced except in full with written approval of Cardinal Laboratories.

Celey D. Keene, Lab Director/Quality Manager



PHONE (575) 393-2326 ° 101 E. MARLAND ° HOBBS, NM 88240

Analytical Results For:

BBC International, Inc.
 Cliff Brunson
 P.O. Box 805
 Hobbs NM, 88241
 Fax To: (575) 397-0397

Received:	09/22/2016	Sampling Date:	09/20/2016
Reported:	09/28/2016	Sampling Type:	Soil
Project Name:	SHELL STATE #3 CTB	Sampling Condition:	Cool & Intact
Project Number:	NONE GIVEN	Sample Received By:	Jodi Henson
Project Location:	NOT GIVEN		

Sample ID: SP 4 @ SURFACE (H602134-07)

BTEx 8021B		mg/kg		Analyzed By: MS					
Analyte	Result	Reporting Limit	Analyzed	Method Blank	BS	% Recovery	True Value QC	RPD	Qualifier
Benzene*	<0.050	0.050	09/26/2016	ND	2.17	108	2.00	2.00	
Toluene*	<0.050	0.050	09/26/2016	ND	2.21	110	2.00	1.60	
Ethylbenzene*	<0.050	0.050	09/26/2016	ND	2.16	108	2.00	1.58	
Total Xylenes*	<0.150	0.150	09/26/2016	ND	6.59	110	6.00	1.14	
Total BTEx	<0.300	0.300	09/26/2016	ND					

Surrogate: 4-Bromofluorobenzene (PID) 99.9 % 73.6-140

Chloride, SM4500CI-B		mg/kg		Analyzed By: AC						
Analyte	Result	Reporting Limit	Analyzed	Method Blank	BS	% Recovery	True Value QC	RPD	Qualifier	
Chloride	64.0	16.0	09/27/2016	ND	432	108	400	0.00		

TPH 8015M		mg/kg		Analyzed By: MS					
Analyte	Result	Reporting Limit	Analyzed	Method Blank	BS	% Recovery	True Value QC	RPD	Qualifier
GRO C6-C10	<10.0	10.0	09/24/2016	ND	194	97.2	200	0.357	
DRO >C10-C28	<10.0	10.0	09/24/2016	ND	212	106	200	0.0141	

Surrogate: 1-Chlorooctane 80.7 % 35-147

Surrogate: 1-Chlorooctadecane 102 % 28-171

Cardinal Laboratories

*=Accredited Analyte

PLEASE NOTE: Liability and Damages. Cardinal's liability and client's exclusive remedy for any claim arising, whether based in contract or tort, shall be limited to the amount paid by client for analyses. All claims, including those for negligence and any other cause whatsoever shall be deemed waived unless made in writing and received by Cardinal within thirty (30) days after completion of the applicable service. In no event shall Cardinal be liable for incidental or consequential damages, including, without limitation, business interruptions, loss of use, or loss of profits incurred by client, its subsidiaries, affiliates or successors arising out of or related to the performance of the services hereunder by Cardinal, regardless of whether such claim is based upon any of the above stated reasons or otherwise. Results relate only to the samples identified above. This report shall not be reproduced except in full with written approval of Cardinal Laboratories.

Celey D. Keene, Lab Director/Quality Manager



PHONE (575) 393-2326 • 101 E. MARLAND • HOBBS, NM 88240

Analytical Results For:

BBC International, Inc.
 Cliff Brunson
 P.O. Box 805
 Hobbs NM, 88241
 Fax To: (575) 397-0397

Received:	09/22/2016	Sampling Date:	09/20/2016
Reported:	09/28/2016	Sampling Type:	Soil
Project Name:	SHELL STATE #3 CTB	Sampling Condition:	Cool & Intact
Project Number:	NONE GIVEN	Sample Received By:	Jodi Henson
Project Location:	NOT GIVEN		

Sample ID: SP 5 @ SURFACE (H602134-08)

BTEx 8021B		mg/kg		Analyzed By: MS					
Analyte	Result	Reporting Limit	Analyzed	Method Blank	BS	% Recovery	True Value QC	RPD	Qualifier
Benzene*	<0.050	0.050	09/26/2016	ND	2.17	108	2.00	2.00	
Toluene*	<0.050	0.050	09/26/2016	ND	2.21	110	2.00	1.60	
Ethylbenzene*	<0.050	0.050	09/26/2016	ND	2.16	108	2.00	1.58	
Total Xylenes*	<0.150	0.150	09/26/2016	ND	6.59	110	6.00	1.14	
Total BTEx	<0.300	0.300	09/26/2016	ND					

Surrogate: 4-Bromofluorobenzene (PID) 98.5 % 73.6-140

Chloride, SM4500CI-B		mg/kg		Analyzed By: AC					
Analyte	Result	Reporting Limit	Analyzed	Method Blank	BS	% Recovery	True Value QC	RPD	Qualifier
Chloride	64.0	16.0	09/27/2016	ND	432	108	400	0.00	

TPH 8015M		mg/kg		Analyzed By: MS					
Analyte	Result	Reporting Limit	Analyzed	Method Blank	BS	% Recovery	True Value QC	RPD	Qualifier
GRO C6-C10	<10.0	10.0	09/24/2016	ND	194	97.2	200	0.357	
DRO >C10-C28	14.2	10.0	09/24/2016	ND	212	106	200	0.0141	

Surrogate: 1-Chlorooctane 74.9 % 35-147

Surrogate: 1-Chlorooctadecane 95.7 % 28-171

Cardinal Laboratories

*=Accredited Analyte

PLEASE NOTE: Liability and Damages. Cardinal's liability and client's exclusive remedy for any claim arising, whether based in contract or tort, shall be limited to the amount paid by client for analyses. All claims, including those for negligence and any other cause whatsoever shall be deemed waived unless made in writing and received by Cardinal within thirty (30) days after completion of the applicable service. In no event shall Cardinal be liable for incidental or consequential damages, including, without limitation, business interruptions, loss of use, or loss of profits incurred by client, its subsidiaries, affiliates or successors arising out of or related to the performance of the services hereunder by Cardinal, regardless of whether such claim is based upon any of the above stated reasons or otherwise. Results relate only to the samples identified above. This report shall not be reproduced except in full with written approval of Cardinal Laboratories.

Celey D. Keene, Lab Director/Quality Manager



PHONE (575) 393-2326 • 101 E. MARLAND • HOBBS, NM 88240

Analytical Results For:

BBC International, Inc.
 Cliff Brunson
 P.O. Box 805
 Hobbs NM, 88241
 Fax To: (575) 397-0397

Received:	09/22/2016	Sampling Date:	09/20/2016
Reported:	09/28/2016	Sampling Type:	Soil
Project Name:	SHELL STATE #3 CTB	Sampling Condition:	Cool & Intact
Project Number:	NONE GIVEN	Sample Received By:	Jodi Henson
Project Location:	NOT GIVEN		

Sample ID: SP 6 @ SURFACE (H602134-09)

BTEx 8021B		mg/kg		Analyzed By: MS					
Analyte	Result	Reporting Limit	Analyzed	Method Blank	BS	% Recovery	True Value QC	RPD	Qualifier
Benzene*	<0.050	0.050	09/26/2016	ND	2.17	108	2.00	2.00	
Toluene*	0.144	0.050	09/26/2016	ND	2.21	110	2.00	1.60	
Ethylbenzene*	0.075	0.050	09/26/2016	ND	2.16	108	2.00	1.58	
Total Xylenes*	0.330	0.150	09/26/2016	ND	6.59	110	6.00	1.14	
Total BTEx	0.586	0.300	09/26/2016	ND					

Surrogate: 4-Bromofluorobenzene (PID) 97.4 % 73.6-140

Chloride, SM4500Cl-B		mg/kg		Analyzed By: AC						
Analyte	Result	Reporting Limit	Analyzed	Method Blank	BS	% Recovery	True Value QC	RPD	Qualifier	
Chloride	1390	16.0	09/27/2016	ND	432	108	400	0.00		

TPH 8015M		mg/kg		Analyzed By: MS				S-06	
Analyte	Result	Reporting Limit	Analyzed	Method Blank	BS	% Recovery	True Value QC	RPD	Qualifier
GRO C6-C10	<50.0	50.0	09/24/2016	ND	194	97.2	200	0.357	
DRO >C10-C28	9470	50.0	09/24/2016	ND	212	106	200	0.0141	

Surrogate: 1-Chlorooctane 95.3 % 35-147

Surrogate: 1-Chlorooctadecane 442 % 28-171

Cardinal Laboratories

*=Accredited Analyte

PLEASE NOTE: Liability and Damages. Cardinal's liability and client's exclusive remedy for any claim arising, whether based in contract or tort, shall be limited to the amount paid by client for analyses. All claims, including those for negligence and any other cause whatsoever shall be deemed waived unless made in writing and received by Cardinal within thirty (30) days after completion of the applicable service. In no event shall Cardinal be liable for incidental or consequential damages, including, without limitation, business interruptions, loss of use, or loss of profits incurred by client, its subsidiaries, affiliates or successors arising out of or related to the performance of the services hereunder by Cardinal, regardless of whether such claim is based upon any of the above stated reasons or otherwise. Results relate only to the samples identified above. This report shall not be reproduced except in full with written approval of Cardinal Laboratories.

Celey D. Keene, Lab Director/Quality Manager



PHONE (575) 393-2326 ° 101 E. MARLAND ° HOBBS, NM 88240

Analytical Results For:

BBC International, Inc.
 Cliff Brunson
 P.O. Box 805
 Hobbs NM, 88241
 Fax To: (575) 397-0397

Received:	09/22/2016	Sampling Date:	09/20/2016
Reported:	09/28/2016	Sampling Type:	Soil
Project Name:	SHELL STATE #3 CTB	Sampling Condition:	Cool & Intact
Project Number:	NONE GIVEN	Sample Received By:	Jodi Henson
Project Location:	NOT GIVEN		

Sample ID: SP 6 @ 1' (H602134-10)

BTEx 8021B		mg/kg		Analyzed By: MS						
Analyte	Result	Reporting Limit	Analyzed	Method Blank	BS	% Recovery	True Value QC	RPD	Qualifier	
Benzene*	<0.050	0.050	09/27/2016	ND	2.31	115	2.00	0.272		
Toluene*	<0.050	0.050	09/27/2016	ND	2.34	117	2.00	0.0127		
Ethylbenzene*	<0.050	0.050	09/27/2016	ND	2.24	112	2.00	0.841		
Total Xylenes*	<0.150	0.150	09/27/2016	ND	6.74	112	6.00	0.682		
Total BTEx	<0.300	0.300	09/27/2016	ND						

Surrogate: 4-Bromofluorobenzene (PID) 98.2 % 73.6-140

Chloride, SM4500CI-B		mg/kg		Analyzed By: AC					
Analyte	Result	Reporting Limit	Analyzed	Method Blank	BS	% Recovery	True Value QC	RPD	Qualifier
Chloride	96.0	16.0	09/27/2016	ND	432	108	400	0.00	

TPH 8015M		mg/kg		Analyzed By: MS					
Analyte	Result	Reporting Limit	Analyzed	Method Blank	BS	% Recovery	True Value QC	RPD	Qualifier
GRO C6-C10	<10.0	10.0	09/24/2016	ND	194	97.2	200	0.357	
DRO >C10-C28	<10.0	10.0	09/24/2016	ND	212	106	200	0.0141	

Surrogate: 1-Chlorooctane 80.0 % 35-147

Surrogate: 1-Chlorooctadecane 98.8 % 28-171

Cardinal Laboratories

*=Accredited Analyte

PLEASE NOTE: Liability and Damages. Cardinal's liability and client's exclusive remedy for any claim arising, whether based in contract or tort, shall be limited to the amount paid by client for analyses. All claims, including those for negligence and any other cause whatsoever shall be deemed waived unless made in writing and received by Cardinal within thirty (30) days after completion of the applicable service. In no event shall Cardinal be liable for incidental or consequential damages, including, without limitation, business interruptions, loss of use, or loss of profits incurred by client, its subsidiaries, affiliates or successors arising out of or related to the performance of the services hereunder by Cardinal, regardless of whether such claim is based upon any of the above stated reasons or otherwise. Results relate only to the samples identified above. This report shall not be reproduced except in full with written approval of Cardinal Laboratories.

Celey D. Keene, Lab Director/Quality Manager



PHONE (575) 393-2326 • 101 E. MARLAND • HOBBS, NM 88240

Analytical Results For:

BBC International, Inc.
 Cliff Brunson
 P.O. Box 805
 Hobbs NM, 88241
 Fax To: (575) 397-0397

Received:	09/22/2016	Sampling Date:	09/20/2016
Reported:	09/28/2016	Sampling Type:	Soil
Project Name:	SHELL STATE #3 CTB	Sampling Condition:	Cool & Intact
Project Number:	NONE GIVEN	Sample Received By:	Jodi Henson
Project Location:	NOT GIVEN		

Sample ID: SP 7 @ SURFACE (H602134-11)

BTEx 8021B		mg/kg		Analyzed By: MS					
Analyte	Result	Reporting Limit	Analyzed	Method Blank	BS	% Recovery	True Value QC	RPD	Qualifier
Benzene*	<0.050	0.050	09/27/2016	ND	2.31	115	2.00	0.272	
Toluene*	0.141	0.050	09/27/2016	ND	2.34	117	2.00	0.0127	
Ethylbenzene*	0.086	0.050	09/27/2016	ND	2.24	112	2.00	0.841	
Total Xylenes*	0.355	0.150	09/27/2016	ND	6.74	112	6.00	0.682	
Total BTEx	0.582	0.300	09/27/2016	ND					

Surrogate: 4-Bromofluorobenzene (PID) 98.7 % 73.6-140

Chloride, SM4500CI-B		mg/kg		Analyzed By: AC						
Analyte	Result	Reporting Limit	Analyzed	Method Blank	BS	% Recovery	True Value QC	RPD	Qualifier	
Chloride	176	16.0	09/27/2016	ND	432	108	400	0.00		

TPH 8015M		mg/kg		Analyzed By: MS				S-06	
Analyte	Result	Reporting Limit	Analyzed	Method Blank	BS	% Recovery	True Value QC	RPD	Qualifier
GRO C6-C10	<50.0	50.0	09/24/2016	ND	194	97.2	200	0.357	
DRO >C10-C28	8100	50.0	09/24/2016	ND	212	106	200	0.0141	

Surrogate: 1-Chlorooctane 82.5 % 35-147

Surrogate: 1-Chlorooctadecane 338 % 28-171

Cardinal Laboratories

*=Accredited Analyte

PLEASE NOTE: Liability and Damages. Cardinal's liability and client's exclusive remedy for any claim arising, whether based in contract or tort, shall be limited to the amount paid by client for analyses. All claims, including those for negligence and any other cause whatsoever shall be deemed waived unless made in writing and received by Cardinal within thirty (30) days after completion of the applicable service. In no event shall Cardinal be liable for incidental or consequential damages, including, without limitation, business interruptions, loss of use, or loss of profits incurred by client, its subsidiaries, affiliates or successors arising out of or related to the performance of the services hereunder by Cardinal, regardless of whether such claim is based upon any of the above stated reasons or otherwise. Results relate only to the samples identified above. This report shall not be reproduced except in full with written approval of Cardinal Laboratories.

Celey D. Keene, Lab Director/Quality Manager



PHONE (575) 393-2326 ° 101 E. MARLAND ° HOBBS, NM 88240

Analytical Results For:

BBC International, Inc.
 Cliff Brunson
 P.O. Box 805
 Hobbs NM, 88241
 Fax To: (575) 397-0397

Received:	09/22/2016	Sampling Date:	09/20/2016
Reported:	09/28/2016	Sampling Type:	Soil
Project Name:	SHELL STATE #3 CTB	Sampling Condition:	Cool & Intact
Project Number:	NONE GIVEN	Sample Received By:	Jodi Henson
Project Location:	NOT GIVEN		

Sample ID: SP 7 @ 1' (H602134-12)

BTX 8021B			mg/kg							
			Analyzed By: MS							
Analyte	Result	Reporting Limit	Analyzed	Method Blank	BS	% Recovery	True Value QC	RPD	Qualifier	
Benzene*	<0.050	0.050	09/27/2016	ND	2.31	115	2.00	0.272		
Toluene*	<0.050	0.050	09/27/2016	ND	2.34	117	2.00	0.0127		
Ethylbenzene*	<0.050	0.050	09/27/2016	ND	2.24	112	2.00	0.841		
Total Xylenes*	<0.150	0.150	09/27/2016	ND	6.74	112	6.00	0.682		
Total BTX	<0.300	0.300	09/27/2016	ND						

Surrogate: 4-Bromofluorobenzene (PID) 97.6 % 73.6-140

Chloride, SM4500CI-B			mg/kg							
			Analyzed By: AC							
Analyte	Result	Reporting Limit	Analyzed	Method Blank	BS	% Recovery	True Value QC	RPD	Qualifier	
Chloride	<16.0	16.0	09/27/2016	ND	432	108	400	0.00		

TPH 8015M			mg/kg							
			Analyzed By: MS							
Analyte	Result	Reporting Limit	Analyzed	Method Blank	BS	% Recovery	True Value QC	RPD	Qualifier	
GRO C6-C10	<10.0	10.0	09/24/2016	ND	194	97.2	200	0.357		
DRO >C10-C28	<10.0	10.0	09/24/2016	ND	212	106	200	0.0141		

Surrogate: 1-Chlorooctane 95.9 % 35-147

Surrogate: 1-Chlorooctadecane 116 % 28-171

Cardinal Laboratories

*=Accredited Analyte

PLEASE NOTE: Liability and Damages. Cardinal's liability and client's exclusive remedy for any claim arising, whether based in contract or tort, shall be limited to the amount paid by client for analyses. All claims, including those for negligence and any other cause whatsoever shall be deemed waived unless made in writing and received by Cardinal within thirty (30) days after completion of the applicable service. In no event shall Cardinal be liable for incidental or consequential damages, including, without limitation, business interruptions, loss of use, or loss of profits incurred by client, its subsidiaries, affiliates or successors arising out of or related to the performance of the services hereunder by Cardinal, regardless of whether such claim is based upon any of the above stated reasons or otherwise. Results relate only to the samples identified above. This report shall not be reproduced except in full with written approval of Cardinal Laboratories.

Celey D. Keene, Lab Director/Quality Manager



PHONE (575) 393-2326 • 101 E. MARLAND • HOBBS, NM 88240

Analytical Results For:

BBC International, Inc.
 Cliff Brunson
 P.O. Box 805
 Hobbs NM, 88241
 Fax To: (575) 397-0397

Received:	09/22/2016	Sampling Date:	09/21/2016
Reported:	09/28/2016	Sampling Type:	Soil
Project Name:	SHELL STATE #3 CTB	Sampling Condition:	Cool & Intact
Project Number:	NONE GIVEN	Sample Received By:	Jodi Henson
Project Location:	NOT GIVEN		

Sample ID: SP 8 @ SURFACE (H602134-13)

BTEx 8021B		mg/kg		Analyzed By: MS					
Analyte	Result	Reporting Limit	Analyzed	Method Blank	BS	% Recovery	True Value QC	RPD	Qualifier
Benzene*	<0.050	0.050	09/27/2016	ND	2.31	115	2.00	0.272	
Toluene*	0.096	0.050	09/27/2016	ND	2.34	117	2.00	0.0127	
Ethylbenzene*	<0.050	0.050	09/27/2016	ND	2.24	112	2.00	0.841	
Total Xylenes*	<0.150	0.150	09/27/2016	ND	6.74	112	6.00	0.682	
Total BTEx	<0.300	0.300	09/27/2016	ND					

Surrogate: 4-Bromofluorobenzene (PID) 97.3 % 73.6-140

Chloride, SM4500CI-B		mg/kg		Analyzed By: AC						
Analyte	Result	Reporting Limit	Analyzed	Method Blank	BS	% Recovery	True Value QC	RPD	Qualifier	
Chloride	480	16.0	09/27/2016	ND	432	108	400	0.00		

TPH 8015M		mg/kg		Analyzed By: MS					
Analyte	Result	Reporting Limit	Analyzed	Method Blank	BS	% Recovery	True Value QC	RPD	Qualifier
GRO C6-C10	<50.0	50.0	09/24/2016	ND	194	97.2	200	0.357	
DRO >C10-C28	1970	50.0	09/24/2016	ND	212	106	200	0.0141	

Surrogate: 1-Chlorooctane 70.3 % 35-147

Surrogate: 1-Chlorooctadecane 145 % 28-171

Cardinal Laboratories

*=Accredited Analyte

PLEASE NOTE: Liability and Damages. Cardinal's liability and client's exclusive remedy for any claim arising, whether based in contract or tort, shall be limited to the amount paid by client for analyses. All claims, including those for negligence and any other cause whatsoever shall be deemed waived unless made in writing and received by Cardinal within thirty (30) days after completion of the applicable service. In no event shall Cardinal be liable for incidental or consequential damages, including, without limitation, business interruptions, loss of use, or loss of profits incurred by client, its subsidiaries, affiliates or successors arising out of or related to the performance of the services hereunder by Cardinal, regardless of whether such claim is based upon any of the above stated reasons or otherwise. Results relate only to the samples identified above. This report shall not be reproduced except in full with written approval of Cardinal Laboratories.

Celey D. Keene, Lab Director/Quality Manager



PHONE (575) 393-2326 ° 101 E. MARLAND ° HOBBS, NM 88240

Analytical Results For:

BBC International, Inc.
 Cliff Brunson
 P.O. Box 805
 Hobbs NM, 88241
 Fax To: (575) 397-0397

Received:	09/22/2016	Sampling Date:	09/21/2016
Reported:	09/28/2016	Sampling Type:	Soil
Project Name:	SHELL STATE #3 CTB	Sampling Condition:	Cool & Intact
Project Number:	NONE GIVEN	Sample Received By:	Jodi Henson
Project Location:	NOT GIVEN		

Sample ID: SP 8 @ 1' (H602134-14)

BTEx 8021B		mg/kg		Analyzed By: MS						
Analyte	Result	Reporting Limit	Analyzed	Method Blank	BS	% Recovery	True Value QC	RPD	Qualifier	
Benzene*	<0.050	0.050	09/27/2016	ND	2.31	115	2.00	0.272		
Toluene*	<0.050	0.050	09/27/2016	ND	2.34	117	2.00	0.0127		
Ethylbenzene*	<0.050	0.050	09/27/2016	ND	2.24	112	2.00	0.841		
Total Xylenes*	<0.150	0.150	09/27/2016	ND	6.74	112	6.00	0.682		
Total BTEx	<0.300	0.300	09/27/2016	ND						

Surrogate: 4-Bromofluorobenzene (PID) 97.2 % 73.6-140

Chloride, SM4500Cl-B		mg/kg		Analyzed By: AC					
Analyte	Result	Reporting Limit	Analyzed	Method Blank	BS	% Recovery	True Value QC	RPD	Qualifier
Chloride	2040	16.0	09/27/2016	ND	432	108	400	0.00	

TPH 8015M		mg/kg		Analyzed By: MS					
Analyte	Result	Reporting Limit	Analyzed	Method Blank	BS	% Recovery	True Value QC	RPD	Qualifier
GRO C6-C10	<10.0	10.0	09/24/2016	ND	194	97.2	200	0.357	
DRO >C10-C28	21.9	10.0	09/24/2016	ND	212	106	200	0.0141	

Surrogate: 1-Chlorooctane 82.5 % 35-147

Surrogate: 1-Chlorooctadecane 101 % 28-171

Sample ID: SP 8 @ 2' (H602134-15)

Chloride, SM4500Cl-B		mg/kg		Analyzed By: AC					
Analyte	Result	Reporting Limit	Analyzed	Method Blank	BS	% Recovery	True Value QC	RPD	Qualifier
Chloride	1960	16.0	09/27/2016	ND	432	108	400	0.00	

Cardinal Laboratories

*=Accredited Analyte

PLEASE NOTE: Liability and Damages. Cardinal's liability and client's exclusive remedy for any claim arising, whether based in contract or tort, shall be limited to the amount paid by client for analyses. All claims, including those for negligence and any other cause whatsoever shall be deemed waived unless made in writing and received by Cardinal within thirty (30) days after completion of the applicable service. In no event shall Cardinal be liable for incidental or consequential damages, including, without limitation, business interruptions, loss of use, or loss of profits incurred by client, its subsidiaries, affiliates or successors arising out of or related to the performance of the services hereunder by Cardinal, regardless of whether such claim is based upon any of the above stated reasons or otherwise. Results relate only to the samples identified above. This report shall not be reproduced except in full with written approval of Cardinal Laboratories.

Celey D. Keene, Lab Director/Quality Manager



PHONE (575) 393-2326 ° 101 E. MARLAND ° HOBBS, NM 88240

Analytical Results For:

BBC International, Inc.
 Cliff Brunson
 P.O. Box 805
 Hobbs NM, 88241
 Fax To: (575) 397-0397

Received:	09/22/2016	Sampling Date:	09/21/2016
Reported:	09/28/2016	Sampling Type:	Soil
Project Name:	SHELL STATE #3 CTB	Sampling Condition:	Cool & Intact
Project Number:	NONE GIVEN	Sample Received By:	Jodi Henson
Project Location:	NOT GIVEN		

Sample ID: SP 8 @ 3' (H602134-16)

Chloride, SM4500Cl-B		mg/kg		Analyzed By: AC					
Analyte	Result	Reporting Limit	Analyzed	Method Blank	BS	% Recovery	True Value QC	RPD	Qualifier
Chloride	32.0	16.0	09/27/2016	ND	432	108	400	0.00	

Sample ID: SP 9 @ SURFACE (H602134-17)

BTEx 8021B		mg/kg		Analyzed By: MS					
Analyte	Result	Reporting Limit	Analyzed	Method Blank	BS	% Recovery	True Value QC	RPD	Qualifier
Benzene*	<0.050	0.050	09/27/2016	ND	2.31	115	2.00	0.272	
Toluene*	0.091	0.050	09/27/2016	ND	2.34	117	2.00	0.0127	
Ethylbenzene*	0.111	0.050	09/27/2016	ND	2.24	112	2.00	0.841	
Total Xylenes*	0.278	0.150	09/27/2016	ND	6.74	112	6.00	0.682	
Total BTEX	0.481	0.300	09/27/2016	ND					

Surrogate: 4-Bromofluorobenzene (PID) 107 % 73.6-140

Chloride, SM4500Cl-B		mg/kg		Analyzed By: HM					
Analyte	Result	Reporting Limit	Analyzed	Method Blank	BS	% Recovery	True Value QC	RPD	Qualifier
Chloride	16.0	16.0	09/28/2016	ND	416	104	400	0.00	

TPH 8015M		mg/kg		Analyzed By: MS				S-06	
Analyte	Result	Reporting Limit	Analyzed	Method Blank	BS	% Recovery	True Value QC	RPD	Qualifier
GRO C6-C10	<100	100	09/24/2016	ND	194	97.2	200	0.357	
DRO >C10-C28	9460	100	09/24/2016	ND	212	106	200	0.0141	

Surrogate: 1-Chlorooctane 80.4 % 35-147

Surrogate: 1-Chlorooctadecane 376 % 28-171

Cardinal Laboratories

*=Accredited Analyte

PLEASE NOTE: Liability and Damages. Cardinal's liability and client's exclusive remedy for any claim arising, whether based in contract or tort, shall be limited to the amount paid by client for analyses. All claims, including those for negligence and any other cause whatsoever shall be deemed waived unless made in writing and received by Cardinal within thirty (30) days after completion of the applicable service. In no event shall Cardinal be liable for incidental or consequential damages, including, without limitation, business interruptions, loss of use, or loss of profits incurred by client, its subsidiaries, affiliates or successors arising out of or related to the performance of the services hereunder by Cardinal, regardless of whether such claim is based upon any of the above stated reasons or otherwise. Results relate only to the samples identified above. This report shall not be reproduced except in full with written approval of Cardinal Laboratories.

Celey D. Keene, Lab Director/Quality Manager



PHONE (575) 393-2326 ° 101 E. MARLAND ° HOBBS, NM 88240

Analytical Results For:

BBC International, Inc.
 Cliff Brunson
 P.O. Box 805
 Hobbs NM, 88241
 Fax To: (575) 397-0397

Received:	09/22/2016	Sampling Date:	09/21/2016
Reported:	09/28/2016	Sampling Type:	Soil
Project Name:	SHELL STATE #3 CTB	Sampling Condition:	Cool & Intact
Project Number:	NONE GIVEN	Sample Received By:	Jodi Henson
Project Location:	NOT GIVEN		

Sample ID: SP 9 @ 1' (H602134-18)

BTEx 8021B		mg/kg		Analyzed By: MS						
Analyte	Result	Reporting Limit	Analyzed	Method Blank	BS	% Recovery	True Value QC	RPD	Qualifier	
Benzene*	<0.050	0.050	09/27/2016	ND	2.31	115	2.00	0.272		
Toluene*	<0.050	0.050	09/27/2016	ND	2.34	117	2.00	0.0127		
Ethylbenzene*	<0.050	0.050	09/27/2016	ND	2.24	112	2.00	0.841		
Total Xylenes*	<0.150	0.150	09/27/2016	ND	6.74	112	6.00	0.682		
Total BTEx	<0.300	0.300	09/27/2016	ND						

Surrogate: 4-Bromofluorobenzene (PID) 98.9 % 73.6-140

Chloride, SM4500CI-B		mg/kg		Analyzed By: HM						
Analyte	Result	Reporting Limit	Analyzed	Method Blank	BS	% Recovery	True Value QC	RPD	Qualifier	
Chloride	352	16.0	09/28/2016	ND	416	104	400	0.00		

TPH 8015M		mg/kg		Analyzed By: MS					
Analyte	Result	Reporting Limit	Analyzed	Method Blank	BS	% Recovery	True Value QC	RPD	Qualifier
GRO C6-C10	<10.0	10.0	09/24/2016	ND	194	97.2	200	0.357	
DRO >C10-C28	<10.0	10.0	09/24/2016	ND	212	106	200	0.0141	

Surrogate: 1-Chlorooctane 80.0 % 35-147

Surrogate: 1-Chlorooctadecane 98.1 % 28-171

Sample ID: SP 9 @ 2' (H602134-19)

Chloride, SM4500Cl-B		mg/kg		Analyzed By: HM					
Analyte	Result	Reporting Limit	Analyzed	Method Blank	BS	% Recovery	True Value QC	RPD	Qualifier
Chloride	992	16.0	09/28/2016	ND	416	104	400	0.00	

Cardinal Laboratories

*=Accredited Analyte

PLEASE NOTE: Liability and Damages. Cardinal's liability and client's exclusive remedy for any claim arising, whether based in contract or tort, shall be limited to the amount paid by client for analyses. All claims, including those for negligence and any other cause whatsoever shall be deemed waived unless made in writing and received by Cardinal within thirty (30) days after completion of the applicable service. In no event shall Cardinal be liable for incidental or consequential damages, including, without limitation, business interruptions, loss of use, or loss of profits incurred by client, its subsidiaries, affiliates or successors arising out of or related to the performance of the services hereunder by Cardinal, regardless of whether such claim is based upon any of the above stated reasons or otherwise. Results relate only to the samples identified above. This report shall not be reproduced except in full with written approval of Cardinal Laboratories.

Celey D. Keene, Lab Director/Quality Manager



PHONE (575) 393-2326 ° 101 E. MARLAND ° HOBBS, NM 88240

Analytical Results For:

BBC International, Inc.
 Cliff Brunson
 P.O. Box 805
 Hobbs NM, 88241
 Fax To: (575) 397-0397

Received:	09/22/2016	Sampling Date:	09/21/2016
Reported:	09/28/2016	Sampling Type:	Soil
Project Name:	SHELL STATE #3 CTB	Sampling Condition:	Cool & Intact
Project Number:	NONE GIVEN	Sample Received By:	Jodi Henson
Project Location:	NOT GIVEN		

Sample ID: SP 9 @ 3' (H602134-20)

Chloride, SM4500Cl-B		mg/kg		Analyzed By: HM						
Analyte	Result	Reporting Limit	Analyzed	Method Blank	BS	% Recovery	True Value QC	RPD	Qualifier	
Chloride	160	16.0	09/28/2016	ND	416	104	400	0.00		

Sample ID: SP 10 @ SURFACE (H602134-21)

BTEX 8021B		mg/kg		Analyzed By: MS					
Analyte	Result	Reporting Limit	Analyzed	Method Blank	BS	% Recovery	True Value QC	RPD	Qualifier
Benzene*	<0.050	0.050	09/27/2016	ND	2.31	115	2.00	0.272	
Toluene*	0.095	0.050	09/27/2016	ND	2.34	117	2.00	0.0127	
Ethylbenzene*	0.116	0.050	09/27/2016	ND	2.24	112	2.00	0.841	
Total Xylenes*	0.314	0.150	09/27/2016	ND	6.74	112	6.00	0.682	
Total BTEX	0.525	0.300	09/27/2016	ND					

Surrogate: 4-Bromofluorobenzene (PID) 106 % 73.6-140

Chloride, SM4500Cl-B		mg/kg		Analyzed By: HM						
Analyte	Result	Reporting Limit	Analyzed	Method Blank	BS	% Recovery	True Value QC	RPD	Qualifier	
Chloride	16.0	16.0	09/28/2016	ND	416	104	400	0.00		

TPH 8015M		mg/kg		Analyzed By: MS				S-06	
Analyte	Result	Reporting Limit	Analyzed	Method Blank	BS	% Recovery	True Value QC	RPD	Qualifier
GRO C6-C10	<100	100	09/24/2016	ND	194	97.2	200	0.357	
DRO >C10-C28	10800	100	09/24/2016	ND	212	106	200	0.0141	

Surrogate: 1-Chlorooctane 91.5 % 35-147

Surrogate: 1-Chlorooctadecane 443 % 28-171

Cardinal Laboratories

*=Accredited Analyte

PLEASE NOTE: Liability and Damages. Cardinal's liability and client's exclusive remedy for any claim arising, whether based in contract or tort, shall be limited to the amount paid by client for analyses. All claims, including those for negligence and any other cause whatsoever shall be deemed waived unless made in writing and received by Cardinal within thirty (30) days after completion of the applicable service. In no event shall Cardinal be liable for incidental or consequential damages, including, without limitation, business interruptions, loss of use, or loss of profits incurred by client, its subsidiaries, affiliates or successors arising out of or related to the performance of the services hereunder by Cardinal, regardless of whether such claim is based upon any of the above stated reasons or otherwise. Results relate only to the samples identified above. This report shall not be reproduced except in full with written approval of Cardinal Laboratories.

Celey D. Keene, Lab Director/Quality Manager



PHONE (575) 393-2326 ° 101 E. MARLAND ° HOBBS, NM 88240

Analytical Results For:

BBC International, Inc.
 Cliff Brunson
 P.O. Box 805
 Hobbs NM, 88241
 Fax To: (575) 397-0397

Received:	09/22/2016	Sampling Date:	09/21/2016
Reported:	09/28/2016	Sampling Type:	Soil
Project Name:	SHELL STATE #3 CTB	Sampling Condition:	Cool & Intact
Project Number:	NONE GIVEN	Sample Received By:	Jodi Henson
Project Location:	NOT GIVEN		

Sample ID: SP 10 @ 1' (H602134-22)

BTEx 8021B		mg/kg		Analyzed By: MS					
Analyte	Result	Reporting Limit	Analyzed	Method Blank	BS	% Recovery	True Value QC	RPD	Qualifier
Benzene*	<0.050	0.050	09/27/2016	ND	2.31	115	2.00	0.272	
Toluene*	<0.050	0.050	09/27/2016	ND	2.34	117	2.00	0.0127	
Ethylbenzene*	<0.050	0.050	09/27/2016	ND	2.24	112	2.00	0.841	
Total Xylenes*	<0.150	0.150	09/27/2016	ND	6.74	112	6.00	0.682	
Total BTEx	<0.300	0.300	09/27/2016	ND					

Surrogate: 4-Bromofluorobenzene (PID) 96.9 % 73.6-140

Chloride, SM4500CI-B		mg/kg		Analyzed By: HM					
Analyte	Result	Reporting Limit	Analyzed	Method Blank	BS	% Recovery	True Value QC	RPD	Qualifier
Chloride	336	16.0	09/28/2016	ND	416	104	400	0.00	

TPH 8015M		mg/kg		Analyzed By: MS					
Analyte	Result	Reporting Limit	Analyzed	Method Blank	BS	% Recovery	True Value QC	RPD	Qualifier
GRO C6-C10	<10.0	10.0	09/24/2016	ND	194	97.2	200	0.357	
DRO >C10-C28	12.4	10.0	09/24/2016	ND	212	106	200	0.0141	

Surrogate: 1-Chlorooctane 86.4 % 35-147

Surrogate: 1-Chlorooctadecane 108 % 28-171

Sample ID: SP 10 @ 2' (H602134-23)

Chloride, SM4500CI-B		mg/kg		Analyzed By: HM					
Analyte	Result	Reporting Limit	Analyzed	Method Blank	BS	% Recovery	True Value QC	RPD	Qualifier
Chloride	320	16.0	09/28/2016	ND	416	104	400	0.00	

Cardinal Laboratories

*=Accredited Analyte

PLEASE NOTE: Liability and Damages. Cardinal's liability and client's exclusive remedy for any claim arising, whether based in contract or tort, shall be limited to the amount paid by client for analyses. All claims, including those for negligence and any other cause whatsoever shall be deemed waived unless made in writing and received by Cardinal within thirty (30) days after completion of the applicable service. In no event shall Cardinal be liable for incidental or consequential damages, including, without limitation, business interruptions, loss of use, or loss of profits incurred by client, its subsidiaries, affiliates or successors arising out of or related to the performance of the services hereunder by Cardinal, regardless of whether such claim is based upon any of the above stated reasons or otherwise. Results relate only to the samples identified above. This report shall not be reproduced except in full with written approval of Cardinal Laboratories.

Celey D. Keene, Lab Director/Quality Manager



PHONE (575) 393-2326 • 101 E. MARLAND • HOBBS, NM 88240

Analytical Results For:

BBC International, Inc.
 Cliff Brunson
 P.O. Box 805
 Hobbs NM, 88241
 Fax To: (575) 397-0397

Received:	09/22/2016	Sampling Date:	09/21/2016
Reported:	09/28/2016	Sampling Type:	Soil
Project Name:	SHELL STATE #3 CTB	Sampling Condition:	Cool & Intact
Project Number:	NONE GIVEN	Sample Received By:	Jodi Henson
Project Location:	NOT GIVEN		

Sample ID: SP 10 @ 3' (H602134-24)

Chloride, SM4500Cl-B		mg/kg		Analyzed By: HM						
Analyte	Result	Reporting Limit	Analyzed	Method Blank	BS	% Recovery	True Value QC	RPD	Qualifier	
Chloride	224	16.0	09/28/2016	ND	416	104	400	0.00		

Sample ID: SP 11 @ SURFACE (H602134-25)

BTX 8021B		mg/kg		Analyzed By: MS					
Analyte	Result	Reporting Limit	Analyzed	Method Blank	BS	% Recovery	True Value QC	RPD	Qualifier
Benzene*	<0.050	0.050	09/27/2016	ND	2.31	115	2.00	0.272	
Toluene*	0.187	0.050	09/27/2016	ND	2.34	117	2.00	0.0127	
Ethylbenzene*	0.238	0.050	09/27/2016	ND	2.24	112	2.00	0.841	
Total Xylenes*	0.848	0.150	09/27/2016	ND	6.74	112	6.00	0.682	
Total BTX	1.27	0.300	09/27/2016	ND					

Surrogate: 4-Bromofluorobenzene (PID) 112 % 73.6-140

Chloride, SM4500Cl-B		mg/kg		Analyzed By: HM						
Analyte	Result	Reporting Limit	Analyzed	Method Blank	BS	% Recovery	True Value QC	RPD	Qualifier	
Chloride	96.0	16.0	09/28/2016	ND	416	104	400	0.00		

TPH 8015M		mg/kg		Analyzed By: MS				S-06	
Analyte	Result	Reporting Limit	Analyzed	Method Blank	BS	% Recovery	True Value QC	RPD	Qualifier
GRO C6-C10	<100	100	09/24/2016	ND	194	97.2	200	0.357	
DRO >C10-C28	7630	100	09/24/2016	ND	212	106	200	0.0141	

Surrogate: 1-Chlorooctane 87.9 % 35-147

Surrogate: 1-Chlorooctadecane 289 % 28-171

Cardinal Laboratories

*=Accredited Analyte

PLEASE NOTE: Liability and Damages. Cardinal's liability and client's exclusive remedy for any claim arising, whether based in contract or tort, shall be limited to the amount paid by client for analyses. All claims, including those for negligence and any other cause whatsoever shall be deemed waived unless made in writing and received by Cardinal within thirty (30) days after completion of the applicable service. In no event shall Cardinal be liable for incidental or consequential damages, including, without limitation, business interruptions, loss of use, or loss of profits incurred by client, its subsidiaries, affiliates or successors arising out of or related to the performance of the services hereunder by Cardinal, regardless of whether such claim is based upon any of the above stated reasons or otherwise. Results relate only to the samples identified above. This report shall not be reproduced except in full with written approval of Cardinal Laboratories.

Celey D. Keene, Lab Director/Quality Manager



PHONE (575) 393-2326 ° 101 E. MARLAND ° HOBBS, NM 88240

Analytical Results For:

BBC International, Inc.
 Cliff Brunson
 P.O. Box 805
 Hobbs NM, 88241
 Fax To: (575) 397-0397

Received:	09/22/2016	Sampling Date:	09/21/2016
Reported:	09/28/2016	Sampling Type:	Soil
Project Name:	SHELL STATE #3 CTB	Sampling Condition:	Cool & Intact
Project Number:	NONE GIVEN	Sample Received By:	Jodi Henson
Project Location:	NOT GIVEN		

Sample ID: SP 11 @ 1' (H602134-26)

BTEx 8021B		mg/kg		Analyzed By: MS					
Analyte	Result	Reporting Limit	Analyzed	Method Blank	BS	% Recovery	True Value QC	RPD	Qualifier
Benzene*	<0.050	0.050	09/27/2016	ND	2.31	115	2.00	0.272	
Toluene*	<0.050	0.050	09/27/2016	ND	2.34	117	2.00	0.0127	
Ethylbenzene*	<0.050	0.050	09/27/2016	ND	2.24	112	2.00	0.841	
Total Xylenes*	<0.150	0.150	09/27/2016	ND	6.74	112	6.00	0.682	
Total BTEX	<0.300	0.300	09/27/2016	ND					

Surrogate: 4-Bromofluorobenzene (PID) 98.1 % 73.6-140

Chloride, SM4500Cl-B		mg/kg		Analyzed By: HM					
Analyte	Result	Reporting Limit	Analyzed	Method Blank	BS	% Recovery	True Value QC	RPD	Qualifier
Chloride	960	16.0	09/28/2016	ND	416	104	400	0.00	

TPH 8015M		mg/kg		Analyzed By: MS					
Analyte	Result	Reporting Limit	Analyzed	Method Blank	BS	% Recovery	True Value QC	RPD	Qualifier
GRO C6-C10	<10.0	10.0	09/24/2016	ND	194	97.2	200	0.357	
DRO >C10-C28	45.2	10.0	09/24/2016	ND	212	106	200	0.0141	

Surrogate: 1-Chlorooctane 88.2 % 35-147

Surrogate: 1-Chlorooctadecane 103 % 28-171

Sample ID: SP 11 @ 2' (H602134-27)

Chloride, SM4500Cl-B		mg/kg		Analyzed By: HM					
Analyte	Result	Reporting Limit	Analyzed	Method Blank	BS	% Recovery	True Value QC	RPD	Qualifier
Chloride	320	16.0	09/28/2016	ND	416	104	400	0.00	

Cardinal Laboratories

*=Accredited Analyte

PLEASE NOTE: Liability and Damages. Cardinal's liability and client's exclusive remedy for any claim arising, whether based in contract or tort, shall be limited to the amount paid by client for analyses. All claims, including those for negligence and any other cause whatsoever shall be deemed waived unless made in writing and received by Cardinal within thirty (30) days after completion of the applicable service. In no event shall Cardinal be liable for incidental or consequential damages, including, without limitation, business interruptions, loss of use, or loss of profits incurred by client, its subsidiaries, affiliates or successors arising out of or related to the performance of the services hereunder by Cardinal, regardless of whether such claim is based upon any of the above stated reasons or otherwise. Results relate only to the samples identified above. This report shall not be reproduced except in full with written approval of Cardinal Laboratories.

Celey D. Keene, Lab Director/Quality Manager



PHONE (575) 393-2326 • 101 E. MARLAND • HOBBS, NM 88240

Analytical Results For:

BBC International, Inc.
 Cliff Brunson
 P.O. Box 805
 Hobbs NM, 88241
 Fax To: (575) 397-0397

Received:	09/22/2016	Sampling Date:	09/21/2016
Reported:	09/28/2016	Sampling Type:	Soil
Project Name:	SHELL STATE #3 CTB	Sampling Condition:	Cool & Intact
Project Number:	NONE GIVEN	Sample Received By:	Jodi Henson
Project Location:	NOT GIVEN		

Sample ID: SP 11 @ 3' (H602134-28)

Chloride, SM4500CI-B		mg/kg	Analyzed By: HM						
Analyte	Result	Reporting Limit	Analyzed	Method Blank	BS	% Recovery	True Value QC	RPD	Qualifier
Chloride	32.0	16.0	09/28/2016	ND	416	104	400	0.00	

Sample ID: SP 12 @ SURFACE (H602134-29)

BTEX 8021B		mg/kg	Analyzed By: MS						A-01
Analyte	Result	Reporting Limit	Analyzed	Method Blank	BS	% Recovery	True Value QC	RPD	Qualifier
Benzene*	<0.050	0.050	09/27/2016	ND	2.31	115	2.00	0.272	
Toluene*	0.259	0.050	09/27/2016	ND	2.34	117	2.00	0.0127	
Ethylbenzene*	0.211	0.050	09/27/2016	ND	2.24	112	2.00	0.841	
Total Xylenes*	0.727	0.150	09/27/2016	ND	6.74	112	6.00	0.682	
Total BTEX	1.20	0.300	09/27/2016	ND					

Surrogate: 4-Bromofluorobenzene (PID) 114 % 73.6-140

Chloride, SM4500CI-B		mg/kg	Analyzed By: HM						
Analyte	Result	Reporting Limit	Analyzed	Method Blank	BS	% Recovery	True Value QC	RPD	Qualifier
Chloride	96.0	16.0	09/28/2016	ND	416	104	400	0.00	

TPH 8015M		mg/kg	Analyzed By: MS						S-06, A-01
Analyte	Result	Reporting Limit	Analyzed	Method Blank	BS	% Recovery	True Value QC	RPD	Qualifier
GRO C6-C10	<100	100	09/24/2016	ND	194	97.2	200	0.357	
DRO >C10-C28	9250	100	09/24/2016	ND	212	106	200	0.0141	

Surrogate: 1-Chlorooctane 93.6 % 35-147

Surrogate: 1-Chlorooctadecane 361 % 28-171

Cardinal Laboratories

*=Accredited Analyte

PLEASE NOTE: Liability and Damages. Cardinal's liability and client's exclusive remedy for any claim arising, whether based in contract or tort, shall be limited to the amount paid by client for analyses. All claims, including those for negligence and any other cause whatsoever shall be deemed waived unless made in writing and received by Cardinal within thirty (30) days after completion of the applicable service. In no event shall Cardinal be liable for incidental or consequential damages, including, without limitation, business interruptions, loss of use, or loss of profits incurred by client, its subsidiaries, affiliates or successors arising out of or related to the performance of the services hereunder by Cardinal, regardless of whether such claim is based upon any of the above stated reasons or otherwise. Results relate only to the samples identified above. This report shall not be reproduced except in full with written approval of Cardinal Laboratories.

Celey D. Keene, Lab Director/Quality Manager



PHONE (575) 393-2326 ° 101 E. MARLAND ° HOBBS, NM 88240

Analytical Results For:

BBC International, Inc.
 Cliff Brunson
 P.O. Box 805
 Hobbs NM, 88241
 Fax To: (575) 397-0397

Received:	09/22/2016	Sampling Date:	09/21/2016
Reported:	09/28/2016	Sampling Type:	Soil
Project Name:	SHELL STATE #3 CTB	Sampling Condition:	Cool & Intact
Project Number:	NONE GIVEN	Sample Received By:	Jodi Henson
Project Location:	NOT GIVEN		

Sample ID: SP 12 @ 1' (H602134-30)

BTEx 8021B		mg/kg		Analyzed By: MS						
Analyte	Result	Reporting Limit	Analyzed	Method Blank	BS	% Recovery	True Value QC	RPD	Qualifier	
Benzene*	<0.050	0.050	09/27/2016	ND	2.31	115	2.00	0.272		
Toluene*	<0.050	0.050	09/27/2016	ND	2.34	117	2.00	0.0127		
Ethylbenzene*	<0.050	0.050	09/27/2016	ND	2.24	112	2.00	0.841		
Total Xylenes*	<0.150	0.150	09/27/2016	ND	6.74	112	6.00	0.682		
Total BTEx	<0.300	0.300	09/27/2016	ND						

Surrogate: 4-Bromofluorobenzene (PID) 95.8 % 73.6-140

Chloride, SM4500CI-B		mg/kg		Analyzed By: HM					
Analyte	Result	Reporting Limit	Analyzed	Method Blank	BS	% Recovery	True Value QC	RPD	Qualifier
Chloride	384	16.0	09/28/2016	ND	416	104	400	0.00	

TPH 8015M		mg/kg		Analyzed By: MS					
Analyte	Result	Reporting Limit	Analyzed	Method Blank	BS	% Recovery	True Value QC	RPD	Qualifier
GRO C6-C10	<10.0	10.0	09/24/2016	ND	194	97.2	200	0.357	
DRO >C10-C28	<10.0	10.0	09/24/2016	ND	212	106	200	0.0141	

Surrogate: 1-Chlorooctane 83.7 % 35-147

Surrogate: 1-Chlorooctadecane 102 % 28-171

Sample ID: SP 12 @ 2' (H602134-31)

Chloride, SM4500Cl-B		mg/kg		Analyzed By: HM					
Analyte	Result	Reporting Limit	Analyzed	Method Blank	BS	% Recovery	True Value QC	RPD	Qualifier
Chloride	32.0	16.0	09/28/2016	ND	416	104	400	0.00	

Cardinal Laboratories

*=Accredited Analyte

PLEASE NOTE: Liability and Damages. Cardinal's liability and client's exclusive remedy for any claim arising, whether based in contract or tort, shall be limited to the amount paid by client for analyses. All claims, including those for negligence and any other cause whatsoever shall be deemed waived unless made in writing and received by Cardinal within thirty (30) days after completion of the applicable service. In no event shall Cardinal be liable for incidental or consequential damages, including, without limitation, business interruptions, loss of use, or loss of profits incurred by client, its subsidiaries, affiliates or successors arising out of or related to the performance of the services hereunder by Cardinal, regardless of whether such claim is based upon any of the above stated reasons or otherwise. Results relate only to the samples identified above. This report shall not be reproduced except in full with written approval of Cardinal Laboratories.

Celey D. Keene, Lab Director/Quality Manager



PHONE (575) 393-2326 ° 101 E. MARLAND ° HOBBS, NM 88240

Analytical Results For:

BBC International, Inc.
 Cliff Brunson
 P.O. Box 805
 Hobbs NM, 88241
 Fax To: (575) 397-0397

Received:	09/22/2016	Sampling Date:	09/21/2016
Reported:	09/28/2016	Sampling Type:	Soil
Project Name:	SHELL STATE #3 CTB	Sampling Condition:	Cool & Intact
Project Number:	NONE GIVEN	Sample Received By:	Jodi Henson
Project Location:	NOT GIVEN		

Sample ID: SP 12 @ 3' (H602134-32)

Chloride, SM4500Cl-B		mg/kg		Analyzed By: HM						
Analyte	Result	Reporting Limit	Analyzed	Method Blank	BS	% Recovery	True Value QC	RPD	Qualifier	
Chloride	256	16.0	09/28/2016	ND	416	104	400	0.00		

Cardinal Laboratories

*=Accredited Analyte

PLEASE NOTE: Liability and Damages. Cardinal's liability and client's exclusive remedy for any claim arising, whether based in contract or tort, shall be limited to the amount paid by client for analyses. All claims, including those for negligence and any other cause whatsoever shall be deemed waived unless made in writing and received by Cardinal within thirty (30) days after completion of the applicable service. In no event shall Cardinal be liable for incidental or consequential damages, including, without limitation, business interruptions, loss of use, or loss of profits incurred by client, its subsidiaries, affiliates or successors arising out of or related to the performance of the services hereunder by Cardinal, regardless of whether such claim is based upon any of the above stated reasons or otherwise. Results relate only to the samples identified above. This report shall not be reproduced except in full with written approval of Cardinal Laboratories.

Celey D. Keene, Lab Director/Quality Manager

PHONE (575) 393-2326 ° 101 E. MARLAND ° HOBBS, NM 88240

Notes and Definitions

S-06	The recovery of this surrogate is outside control limits due to sample dilution required from high analyte concentration and/or matrix interference's.
A-01	Sample jar contained headspace. Results may be biased low.
ND	Analyte NOT DETECTED at or above the reporting limit
RPD	Relative Percent Difference
**	Samples not received at proper temperature of 6°C or below.
***	Insufficient time to reach temperature.
-	Chloride by SM4500Cl-B does not require samples be received at or below 6°C Samples reported on an as received basis (wet) unless otherwise noted on report

Cardinal Laboratories

*=Accredited Analyte

PLEASE NOTE: Liability and Damages. Cardinal's liability and client's exclusive remedy for any claim arising, whether based in contract or tort, shall be limited to the amount paid by client for analyses. All claims, including those for negligence and any other cause whatsoever shall be deemed waived unless made in writing and received by Cardinal within thirty (30) days after completion of the applicable service. In no event shall Cardinal be liable for incidental or consequential damages, including, without limitation, business interruptions, loss of use, or loss of profits incurred by client, its subsidiaries, affiliates or successors arising out of or related to the performance of the services hereunder by Cardinal, regardless of whether such claim is based upon any of the above stated reasons or otherwise. Results relate only to the samples identified above. This report shall not be reproduced except in full with written approval of Cardinal Laboratories.

A handwritten signature in black ink, appearing to read "Celey D. Keene".

Celey D. Keene, Lab Director/Quality Manager



CARDINAL LABORATORIES

101 East Marland, Hobbs, NM 88240
(505) 393-2326 FAX (505) 393-2476

CHAIN-OF-CUSTODY AND ANALYSIS REQUEST

Company Name: BBC International, Inc.		BILL TO		ANALYSIS REQUEST					
Project Manager: Cliff Brunson		P.O. #:							
Address: P.O. Box 805		Company:							
City: Hobbs		Attn:							
State: NM Zip: 88241		Address:							
Phone #: 575-397-6388 Fax #: 575-397-0397		City:							
Project #:		State:		Zip:					
Project Name: Shell Site #3 CTB		Project Owner: CV							
Project Location:		Phone #:							
Sample Name: Soil Samples		Fax #:							
FOR LAB USE ONLY		PRESERV		SAMPLING					
Lab I.D. HUC0134		Sample I.D.							
		(G)RAB OR (C)OMP.							
		# CONTAINERS							
		GROUNDWATER							
		WASTEWATER							
		SOIL							
		OIL							
		SLUDGE							
		OTHER:							
		ACID/BASE:							
		ICE / COOL							
		OTHER:							
		DATE		TIME					
1		9/10/16		9:00					
2		9/10/16		9:15					
3		9/10/16		10:15					
4		9/10/16		10:30					
5		9/10/16		11:11					
6		9/10/16		11:22					
7		9/10/16		12:00					
8		9/10/16		11:11					
9		9/10/16		2:00					
10		9/10/16		2:19					
				TPH					
				BTEX					
				CL-					

PLEASE NOTE: Liability and Damages. Cardinal's liability and client's exclusive remedy for any claim arising whether based in contract or tort, shall be limited to the amount paid by the client for the analyses. All claims, including those for negligence and any other cause whatsoever shall be deemed waived unless made in writing and received by Cardinal within 30 days after completion of the applicable service. In no event shall Cardinal be liable for incidental or consequential damages, including without limitation, business interruptions, loss of use, or loss of profits incurred by client, its subsidiaries, affiliates or successors arising out of or related to the performance of services hereunder by Cardinal, regardless of whether such claim is based upon any of the above stated reasons or otherwise.

Relinquished By: [Signature]	Date: 9/21/16	Received By: [Signature]	Phone Result: <input type="checkbox"/> Yes <input type="checkbox"/> No	Add'l Phone #:
Relinquished By: [Signature]	Date: 3:00 PM	Received By: [Signature]	Fax Result: <input type="checkbox"/> Yes <input type="checkbox"/> No	Add'l Fax #:
REMARKS:				

Delivered By: (Circle One) ☒ UPS ☐ Bus ☐ Other: -3.1%
 Sample - UPS - Bus - Other: -3.1%
 Sample Condition: ☒ Cool ☐ Intact ☐ Yes ☐ No
 CHECKED BY: [Signature]
 t Cardinal cannot accept verbal changes. Please fax written changes to 505-393-2476
 #75



101 East Marland, Hobbs, NM 88240
(505) 393-2326 FAX (505) 393-2476

CHAIN-OF-CUSTODY AND ANALYSIS REQUEST

Company Name: BBC International, Inc.				BILL TO				ANALYSIS REQUEST			
Project Manager: Cliff Brunson				P.O. #:							
Address: P.O. Box 805				Company:							
City: Hobbs				Attn:							
State: NM Zip: 88241				Address:							
Phone #: 575-397-6388 Fax #: 575-397-0397				City:							
Project #:				State: Zip:							
Project Name: <i>Sub Site #3 CTB</i>				Phone #:							
Project Location:				Fax #:							
Sample Name: <i>Sub Site #3</i>				PRESERV.				SAMPLING			
FOR LAB USE ONLY											

Lab I.D.	Sample I.D.	(G)RAB OR (C)OMP.	# CONTAINERS	MATRIX						DATE	TIME	TPH	BTEX	CL
				GROUNDWATER	WASTEWATER	SOIL	OIL	SLUDGE	OTHER :					
11	907 Q Surface	1	1							9/20/16	3:00	/	/	/
12	907 Q 1	1	1							9/20/16	3:11	/	/	/
13	908 Q Surface	1	1							9/21/16	8:52	/	/	/
14	908 Q 1	1	1							9/21/16	9:11	/	/	/
15	908 Q 2	1	1							9/21/16	9:40	/	/	/
16	908 Q 3	1	1							9/21/16	10:15	/	/	/
17	909 Q Surface	1	1							9/21/16	10:58	/	/	/
18	909 Q 1	1	1							9/21/16	11:11	/	/	/
19	909 Q 2	1	1							9/21/16	11:18	/	/	/
20	909 Q 3	1	1							9/21/16	11:26	/	/	/

PLEASE NOTE: Liability and Damages. Cardinal's liability and client's exclusive remedy for any claim arising whether based in contract or tort, shall be limited to the amount paid by the client for the analyses. All claims, including those for negligence and any other cause whatsoever shall be deemed waived unless made in writing and received by Cardinal within 30 days after completion of the applicable service. In no event shall Cardinal be liable for incidental or consequential damages, including without limitation, business interruptions, loss of use, or loss of profits incurred by client, its subsidiaries, affiliates or successors arising out of or related to the performance of services hereunder by Cardinal, regardless of whether such claim is based upon any of the above stated reasons or otherwise.

Relinquished By: <i>Jeff Orles</i>	Date:	Received By: <i>Debi Henderson</i>	Phone Result: <input type="checkbox"/> Yes <input type="checkbox"/> No	Add'l Phone #:
Relinquished By:	Time:	Received By:	Fax Result: <input type="checkbox"/> Yes <input type="checkbox"/> No	Add'l Fax #:
Relinquished By:	Date:	Received By:	REMARKS:	
Relinquished By:	Time:	Received By:		

Delivered By: (Circle One)	Sample Condition	CHECKED BY: (Initials)
Sampler - UPS - Bus - Other:	<input checked="" type="checkbox"/> Cool <input checked="" type="checkbox"/> Intact <input type="checkbox"/> Yes <input checked="" type="checkbox"/> No	<i>Debi Henderson</i>

-3.10c



ARDINAL LABORATORIES

101 East Marland, Hobbs, NM 88240
(505) 393-2326 FAX (505) 393-2476

CHAIN-OF-CUSTODY AND ANALYSIS REQUEST

Company Name: BBC International, Inc.				BILL TO				ANALYSIS REQUEST							
Project Manager: Cliff Brunson				P.O. #:											
Address: P.O. Box 805				Company:											
City: Hobbs				Attn:											
State: NM Zip: 88241				Address:											
Phone #: 575-397-6388 Fax #: 575-397-0397				City:											
Project #:				State: Zip:											
Project Name: Shell State #3 CTB				Phone #:											
Project Location:				Fax #:											
Sampler Name: Jeff Ornelas				PRESERV.				SAMPLING							
FOR LAB USE ONLY															
Lab I.D. Sample I.D.				(G)RAB OR (C)OMP.		# CONTAINERS		DATE		TIME					
				GROUNDWATER		WASTEWATER									
		MATRIX		SOIL		OIL		ACID/BASE:		ICE / COOL		OTHER :			
				SLUDGE		OTHER :									
				ICE / COOL		OTHER :									
				DATE		TIME									
				TPH		BTEX								CL	
H00034		S0 10 @ Surface		G 1		9/21/6 11:45									
21		S0 10 @ 1'		G 1		9/21/6 11:55									
22		S0 10 @ 2'		G 1		9/21/6 12:12									
23		S0 10 @ 3'		G 1		9/21/6 10:00									
24		S0 11 @ Surface		G 1		9/21/6 11:55									
25		S0 11 @ 1'		G 1		9/21/6 13:00									
26		S0 11 @ 2'		G 1		9/21/6 14:59									
27		S0 11 @ 3'		G 1		9/21/6 21:5									
28		S0 12 @ Surface		G 1		9/21/6 22:2									
29															
30															

PLEASE NOTE: Liability and Damages. Cardinal's liability and client's exclusive remedy for any claim arising whether based in contract or tort, shall be limited to the amount paid by the client for the analyses. All claims, including those for negligence and any other cause whatsoever shall be deemed waived unless made in writing and received by Cardinal within 30 days after completion of the applicable service. In no event shall Cardinal be liable for incidental or consequential damages, including without limitation, business interruptions, loss of use, or loss of profits incurred by client, its subsidiaries, affiliates or successors arising out of or related to the performance of services hereunder by Cardinal, regardless of whether such claim is based upon any of the above stated reasons or otherwise.

Relinquished By: <u>Jeff Ornelas</u>		Date: <u>9/21/6</u>		Received By: <u>Jefferson</u>	
Relinquished By:		Date:		Received By:	
Time:		Time:		Time:	

Delivered By: (Circle One) -3.12

Sampler - UPS - Bus - Other:

Sample Condition: ☒ Cool ☐ Intact ☐ Yes ☐ No

CHECKED BY: JA

REMARKS: #29 sample had head space



ORDINAL LABORATORIES

101 East Marland, Hobbs, NM 88240
(505) 393-2326 FAX (505) 393-2476

CHAIN-OF-CUSTODY AND ANALYSIS REQUEST

[illegible]



PHONE (575) 393-2326 ° 101 E. MARLAND ° HOBBS, NM 88240

December 14, 2017

Cliff Brunson

BBC International, Inc.

P.O. Box 805

Hobbs, NM 88241

RE: SHELL STATE #3 CTB

Enclosed are the results of analyses for samples received by the laboratory on 12/07/17 16:45.

Cardinal Laboratories is accredited through Texas NELAP under certificate number T104704398-16-8. Accreditation applies to drinking water, non-potable water and solid and chemical materials. All accredited analytes are denoted by an asterisk (*). For a complete list of accredited analytes and matrices visit the TCEQ website at www.tceq.texas.gov/field/qa/lab_accred_certif.html.

Cardinal Laboratories is accredited through the State of Colorado Department of Public Health and Environment for:

Method EPA 552.2	Haloacetic Acids (HAA-5)
Method EPA 524.2	Total Trihalomethanes (TTHM)
Method EPA 524.4	Regulated VOCs (V1, V2, V3)

Accreditation applies to public drinking water matrices.

This report meets NELAP requirements and is made up of a cover page, analytical results, and a copy of the original chain-of-custody. If you have any questions concerning this report, please feel free to contact me.

Sincerely,

A handwritten signature in black ink that reads "Celey D. Keene". The signature is written in a cursive style with a large, stylized 'C' and 'K'.

Celey D. Keene

Lab Director/Quality Manager



PHONE (575) 393-2326 ° 101 E. MARLAND ° HOBBS, NM 88240

Analytical Results For:

BBC International, Inc.
 Cliff Brunson
 P.O. Box 805
 Hobbs NM, 88241
 Fax To: (575) 397-0397

Received:	12/07/2017	Sampling Date:	12/05/2017
Reported:	12/14/2017	Sampling Type:	Soil
Project Name:	SHELL STATE #3 CTB	Sampling Condition:	Cool & Intact
Project Number:	NONE GIVEN	Sample Received By:	Tamara Oldaker
Project Location:	OXY		

Sample ID: SIDE WALL 1 (H703388-01)

Chloride, SM4500Cl-B		mg/kg		Analyzed By: AC						
Analyte	Result	Reporting Limit	Analyzed	Method Blank	BS	% Recovery	True Value QC	RPD	Qualifier	
Chloride	<16.0	16.0	12/12/2017	ND	416	104	400	3.77		

Sample ID: SIDE WALL 2 (H703388-02)

Chloride, SM4500Cl-B		mg/kg		Analyzed By: AC						
Analyte	Result	Reporting Limit	Analyzed	Method Blank	BS	% Recovery	True Value QC	RPD	Qualifier	
Chloride	<16.0	16.0	12/12/2017	ND	416	104	400	3.77		

Sample ID: SIDE WALL 3 (H703388-03)

Chloride, SM4500Cl-B		mg/kg		Analyzed By: AC					
Analyte	Result	Reporting Limit	Analyzed	Method Blank	BS	% Recovery	True Value QC	RPD	Qualifier
Chloride	96.0	16.0	12/12/2017	ND	416	104	400	3.77	

Sample ID: SIDE WALL 4 (H703388-04)

Chloride, SM4500Cl-B		mg/kg		Analyzed By: AC						
Analyte	Result	Reporting Limit	Analyzed	Method Blank	BS	% Recovery	True Value QC	RPD	Qualifier	
Chloride	<16.0	16.0	12/12/2017	ND	416	104	400	3.77		

Cardinal Laboratories

*=Accredited Analyte

PLEASE NOTE: Liability and Damages. Cardinal's liability and client's exclusive remedy for any claim arising, whether based in contract or tort, shall be limited to the amount paid by client for analyses. All claims, including those for negligence and any other cause whatsoever shall be deemed waived unless made in writing and received by Cardinal within thirty (30) days after completion of the applicable service. In no event shall Cardinal be liable for incidental or consequential damages, including, without limitation, business interruptions, loss of use, or loss of profits incurred by client, its subsidiaries, affiliates or successors arising out of or related to the performance of the services hereunder by Cardinal, regardless of whether such claim is based upon any of the above stated reasons or otherwise. Results relate only to the samples identified above. This report shall not be reproduced except in full with written approval of Cardinal Laboratories.

Celey D. Keene, Lab Director/Quality Manager



PHONE (575) 393-2326 ° 101 E. MARLAND ° HOBBS, NM 88240

Analytical Results For:

BBC International, Inc.
 Cliff Brunson
 P.O. Box 805
 Hobbs NM, 88241
 Fax To: (575) 397-0397

Received:	12/07/2017	Sampling Date:	12/05/2017
Reported:	12/14/2017	Sampling Type:	Soil
Project Name:	SHELL STATE #3 CTB	Sampling Condition:	Cool & Intact
Project Number:	NONE GIVEN	Sample Received By:	Tamara Oldaker
Project Location:	OXY		

Sample ID: SIDE WALL 5 (H703388-05)

Chloride, SM4500Cl-B		mg/kg		Analyzed By: AC						
Analyte	Result	Reporting Limit	Analyzed	Method Blank	BS	% Recovery	True Value QC	RPD	Qualifier	
Chloride	96.0	16.0	12/12/2017	ND	416	104	400	3.77		

Sample ID: SIDE WALL 6 (H703388-06)

Chloride, SM4500CI-B		mg/kg		Analyzed By: AC						
Analyte	Result	Reporting Limit	Analyzed	Method Blank	BS	% Recovery	True Value QC	RPD	Qualifier	
Chloride	16.0	16.0	12/12/2017	ND	416	104	400	3.77		

Sample ID: SIDE WALL 7 (H703388-07)

Chloride, SM4500Cl-B		mg/kg		Analyzed By: AC						
Analyte	Result	Reporting Limit	Analyzed	Method Blank	BS	% Recovery	True Value QC	RPD	Qualifier	
Chloride	32.0	16.0	12/12/2017	ND	416	104	400	3.77		

Sample ID: SIDE WALL 8 (H703388-08)

Chloride, SM4500Cl-B		mg/kg		Analyzed By: AC						
Analyte	Result	Reporting Limit	Analyzed	Method Blank	BS	% Recovery	True Value QC	RPD	Qualifier	
Chloride	80.0	16.0	12/12/2017	ND	416	104	400	3.77		

Sample ID: SIDE WALL 9 (H703388-09)

Chloride, SM4500Cl-B		mg/kg		Analyzed By: AC						
Analyte	Result	Reporting Limit	Analyzed	Method Blank	BS	% Recovery	True Value QC	RPD	Qualifier	
Chloride	16.0	16.0	12/12/2017	ND	416	104	400	3.77		

Cardinal Laboratories

*=Accredited Analyte

PLEASE NOTE: Liability and Damages. Cardinal's liability and client's exclusive remedy for any claim arising, whether based in contract or tort, shall be limited to the amount paid by client for analyses. All claims, including those for negligence and any other cause whatsoever shall be deemed waived unless made in writing and received by Cardinal within thirty (30) days after completion of the applicable service. In no event shall Cardinal be liable for incidental or consequential damages, including, without limitation, business interruptions, loss of use, or loss of profits incurred by client, its subsidiaries, affiliates or successors arising out of or related to the performance of the services hereunder by Cardinal, regardless of whether such claim is based upon any of the above stated reasons or otherwise. Results relate only to the samples identified above. This report shall not be reproduced except in full with written approval of Cardinal Laboratories.

Celey D. Keene, Lab Director/Quality Manager



PHONE (575) 393-2326 ° 101 E. MARLAND ° HOBBS, NM 88240

Analytical Results For:

BBC International, Inc.
 Cliff Brunson
 P.O. Box 805
 Hobbs NM, 88241
 Fax To: (575) 397-0397

Received:	12/07/2017	Sampling Date:	12/05/2017
Reported:	12/14/2017	Sampling Type:	Soil
Project Name:	SHELL STATE #3 CTB	Sampling Condition:	Cool & Intact
Project Number:	NONE GIVEN	Sample Received By:	Tamara Oldaker
Project Location:	OXY		

Sample ID: SIDE WALL 10 (H703388-10)

Chloride, SM4500Cl-B		mg/kg		Analyzed By: AC						
Analyte	Result	Reporting Limit	Analyzed	Method Blank	BS	% Recovery	True Value QC	RPD	Qualifier	
Chloride	96.0	16.0	12/12/2017	ND	416	104	400	3.77		

Sample ID: SIDE WALL 11 (H703388-11)

Chloride, SM4500CI-B		mg/kg		Analyzed By: AC					
Analyte	Result	Reporting Limit	Analyzed	Method Blank	BS	% Recovery	True Value QC	RPD	Qualifier
Chloride	16.0	16.0	12/12/2017	ND	416	104	400	3.77	

Sample ID: SIDE WALL 12 (H703388-12)

Chloride, SM4500CI-B		mg/kg		Analyzed By: AC						
Analyte	Result	Reporting Limit	Analyzed	Method Blank	BS	% Recovery	True Value QC	RPD	Qualifier	
Chloride	<16.0	16.0	12/12/2017	ND	432	108	400	0.00		

Sample ID: BOTTOM 1 (H703388-13)

Chloride, SM4500CI-B		mg/kg		Analyzed By: AC						
Analyte	Result	Reporting Limit	Analyzed	Method Blank	BS	% Recovery	True Value QC	RPD	Qualifier	
Chloride	64.0	16.0	12/12/2017	ND	432	108	400	0.00		

Sample ID: BOTTOM 2 (H703388-14)

Chloride, SM4500Cl-B		mg/kg		Analyzed By: AC						
Analyte	Result	Reporting Limit	Analyzed	Method Blank	BS	% Recovery	True Value QC	RPD	Qualifier	
Chloride	32.0	16.0	12/12/2017	ND	432	108	400	0.00		

Cardinal Laboratories

*=Accredited Analyte

PLEASE NOTE: Liability and Damages. Cardinal's liability and client's exclusive remedy for any claim arising, whether based in contract or tort, shall be limited to the amount paid by client for analyses. All claims, including those for negligence and any other cause whatsoever shall be deemed waived unless made in writing and received by Cardinal within thirty (30) days after completion of the applicable service. In no event shall Cardinal be liable for incidental or consequential damages, including, without limitation, business interruptions, loss of use, or loss of profits incurred by client, its subsidiaries, affiliates or successors arising out of or related to the performance of the services hereunder by Cardinal, regardless of whether such claim is based upon any of the above stated reasons or otherwise. Results relate only to the samples identified above. This report shall not be reproduced except in full with written approval of Cardinal Laboratories.

Celey D. Keene, Lab Director/Quality Manager



PHONE (575) 393-2326 ° 101 E. MARLAND ° HOBBS, NM 88240

Analytical Results For:

BBC International, Inc.
 Cliff Brunson
 P.O. Box 805
 Hobbs NM, 88241
 Fax To: (575) 397-0397

Received:	12/07/2017	Sampling Date:	12/05/2017
Reported:	12/14/2017	Sampling Type:	Soil
Project Name:	SHELL STATE #3 CTB	Sampling Condition:	Cool & Intact
Project Number:	NONE GIVEN	Sample Received By:	Tamara Oldaker
Project Location:	OXY		

Sample ID: BOTTOM 3 (H703388-15)

Chloride, SM4500Cl-B		mg/kg		Analyzed By: AC						
Analyte	Result	Reporting Limit	Analyzed	Method Blank	BS	% Recovery	True Value QC	RPD	Qualifier	
Chloride	32.0	16.0	12/12/2017	ND	432	108	400	0.00		

Sample ID: BOTTOM 4 (H703388-16)

Chloride, SM4500CI-B		mg/kg		Analyzed By: AC						
Analyte	Result	Reporting Limit	Analyzed	Method Blank	BS	% Recovery	True Value QC	RPD	Qualifier	
Chloride	48.0	16.0	12/12/2017	ND	432	108	400	0.00		

Sample ID: BOTTOM 5 (H703388-17)

Chloride, SM4500Cl-B		mg/kg		Analyzed By: AC						
Analyte	Result	Reporting Limit	Analyzed	Method Blank	BS	% Recovery	True Value QC	RPD	Qualifier	
Chloride	48.0	16.0	12/12/2017	ND	432	108	400	0.00		

Sample ID: BOTTOM 6 (H703388-18)

Chloride, SM4500CI-B		mg/kg		Analyzed By: AC					
Analyte	Result	Reporting Limit	Analyzed	Method Blank	BS	% Recovery	True Value QC	RPD	Qualifier
Chloride	32.0	16.0	12/12/2017	ND	432	108	400	0.00	

Cardinal Laboratories

*=Accredited Analyte

PLEASE NOTE: Liability and Damages. Cardinal's liability and client's exclusive remedy for any claim arising, whether based in contract or tort, shall be limited to the amount paid by client for analyses. All claims, including those for negligence and any other cause whatsoever shall be deemed waived unless made in writing and received by Cardinal within thirty (30) days after completion of the applicable service. In no event shall Cardinal be liable for incidental or consequential damages, including, without limitation, business interruptions, loss of use, or loss of profits incurred by client, its subsidiaries, affiliates or successors arising out of or related to the performance of the services hereunder by Cardinal, regardless of whether such claim is based upon any of the above stated reasons or otherwise. Results relate only to the samples identified above. This report shall not be reproduced except in full with written approval of Cardinal Laboratories.

Celey D. Keene, Lab Director/Quality Manager

PHONE (575) 393-2326 ° 101 E. MARLAND ° HOBBS, NM 88240

Notes and Definitions

ND	Analyte NOT DETECTED at or above the reporting limit
RPD	Relative Percent Difference
**	Samples not received at proper temperature of 6°C or below.
***	Insufficient time to reach temperature.
-	Chloride by SM4500Cl-B does not require samples be received at or below 6°C Samples reported on an as received basis (wet) unless otherwise noted on report

Cardinal Laboratories

*=Accredited Analyte

PLEASE NOTE: Liability and Damages. Cardinal's liability and client's exclusive remedy for any claim arising, whether based in contract or tort, shall be limited to the amount paid by client for analyses. All claims, including those for negligence and any other cause whatsoever shall be deemed waived unless made in writing and received by Cardinal within thirty (30) days after completion of the applicable service. In no event shall Cardinal be liable for incidental or consequential damages, including, without limitation, business interruptions, loss of use, or loss of profits incurred by client, its subsidiaries, affiliates or successors arising out of or related to the performance of the services hereunder by Cardinal, regardless of whether such claim is based upon any of the above stated reasons or otherwise. Results relate only to the samples identified above. This report shall not be reproduced except in full with written approval of Cardinal Laboratories.

A handwritten signature in black ink, appearing to read "Celey D. Keene".

Celey D. Keene, Lab Director/Quality Manager



ARDINAL LABORATORIES

101 East Marland, Hobbs, NM 88240
(505) 393-2326 FAX (505) 393-2476

CHAIN-OF-CUSTODY AND ANALYSIS REQUEST

[illegible]



ARDINAL LABORATORIES

101 East Marland, Hobbs, NM 88240
(505) 393-2326 FAX (505) 393-2476

CHAIN-OF-CUSTODY AND ANALYSIS REQUEST

282

[illegible]

From: Yu, Olivia, EMNRD
To: Casey_Summers@oxy.com; Groves_Amber
Cc: cbrunson@bbcinternational.com; kswinney@bbcinternational.com; kathy@bbcinternational.com; jgilkey@bbcinternational.com; Jennifer_Hudgens@oxy.com
Subject: RE: OXY - Shell State #3 CTB - Remediation Plan
Date: Friday, June 2, 2017 4:04:32 PM

Dear Casey:

NMOCD will approve the delineation/remediation plan for 1RP-4440 with these modifications.

1. Excavate SP1, SP2, SP3, SP6, SP7, SP10, SP11, SP12 to 1 ft. bgs. Submit laboratory analyses of bottom and sidewall confirmation samples.
2. Scrape surface 6 inches at SP4 & SP5 is fine.
3. Excavate SP8 and SP9 to 2.5 ft. bgs. Submit laboratory analyses of bottom and sidewall confirmation samples.
4. Like approval from SLO required, along with any revegetation plan requirements for affected area off location.
5. Provide photographic documentation of corrective actions in the closure report.

Please confirm or contact me with concerns.

Thanks,
Olivia

From: Casey_Summers@oxy.com [mailto:Casey_Summers@oxy.com]
Sent: Thursday, May 11, 2017 3:07 PM
To: Yu, Olivia, EMNRD <Olivia.Yu@state.nm.us>
Cc: cbrunson@bbcinternational.com; kswinney@bbcinternational.com; kathy@bbcinternational.com; jgilkey@bbcinternational.com; Jennifer_Hudgens@oxy.com
Subject: FW: OXY - Shell State #3 CTB - Remediation Plan

Olivia,

This is the other one I was going to try and send you yesterday. Can you take a look at the attached and below? This is another plan that got lost in the mix of NMOCD personnel changes. Delineation does not meet the COA but that is because it was completed in September of last year. BLM approved of the plan in December so we are good to go there.

Thank you for your time and consideration.

Casey Summers
O: (575)-628-4152
C: (575)-513-8289

From: Cliff Brunson [mailto:cbrunson@bbcinternational.com]

Sent: Tuesday, November 01, 2016 12:19 PM
To: Kristen Lynch <Kristen.Lynch@state.nm.us>
Cc: Casey Summers <Casey_Summers@oxy.com>; jennifer_duarte@oxy.com; Ken Swinney <kswinney@bbcinternational.com>; Jennifer Gilkey <jgilkey@bbcinternational.com>; Kathy Purvis <kathy@bbcinternational.com>
Subject: OXY - Shell State #3 CTB - Remediation Plan

Kristen,

This e-mail is to confirm our discussion concerning the remediation plan for the OXY Shell State #3 CTB release. I have attached the information packet that we used in our discussion with a cover page describing the remediation plan that we agreed upon.

If you would please reply back via e-mail with your concurrence on this plan, it would be greatly appreciated.

Thanks, Cliff

Cliff P. Brunson, CEI, CRS
President
BBC International, Inc.
World-Wide Environmental Specialists
Mailing Address:
P. O. Box 805
Hobbs, NM 88241-0805 USA
Shipping Address:
1324 W. Marland St.
Hobbs, NM 88240 USA
Phone: (575) 397-6388
Fax: (575) 397-0397
E-Mail: cbrunson@bbcinternational.com



Confidentiality Notice: This electronic transmission (and any attached documents) is intended only for the person(s) to whom it is addressed and may contain information that is privileged, confidential, or otherwise protected from disclosure. If you have received this transmission in error, please immediately notify the sender by e-mail or by telephone call to (575) 397-6388 for handling instructions. Any disclosure or distribution of the contents of this transmission by anyone other than the named recipient(s) is strictly prohibited.

From: Groves, Amber
To: [Cliff Brunson](#); [Casey_Summers@oxy.com](#); [Olivia.Yu@state.nm.us](#)
Cc: [kswinney@bbcinternational.com](#); [kathy@bbcinternational.com](#); [jgilkey@bbcinternational.com](#); [Jennifer_Smith@oxy.com](#)
Subject: RE: OXY - Shell State #3 CTB - Remediation Plan
Date: Tuesday, June 20, 2017 10:15:42 AM
Attachments: [image003.png](#)
[image001.png](#)
[image002.png](#)
[image004.png](#)

Cliff,

Your revegetation plan is approved.

Thank you,

Amber Groves

Remediation Specialist

Field Operations Division

(575)392-3697

(575)263-3209 cell

New Mexico State Land Office

2827 N. Dal Paso Suite 117

Hobbs, NM 88260

.....
CONFIDENTIALITY NOTICE - This e-mail transmission, including all documents, files, or previous e-mail messages attached hereto, may contain confidential and/or legally privileged information. If you are not the intended recipient, or a person responsible for delivering it to the intended recipient, you are hereby notified that you must not read this transmission and that any disclosure, copying, printing, distribution, or use of any of the information contained in and/or attached to this transmission is **STRICTLY PROHIBITED**. If you have received this transmission in error, please immediately notify the sender and delete the original transmission and its attachments without reading or saving in any manner. Thank you.

From: Cliff Brunson [mailto:cbrunson@bbcinternational.com]
Sent: Monday, June 12, 2017 3:04 PM
To: Groves, Amber <agroves@slo.state.nm.us>; Casey_Summers@oxy.com; Olivia.Yu@state.nm.us
Cc: [kswinney@bbcinternational.com](#); [kathy@bbcinternational.com](#); [jgilkey@bbcinternational.com](#); [Jennifer_Smith@oxy.com](#)
Subject: RE: OXY - Shell State #3 CTB - Remediation Plan

Amber,

I have attached a revised remediation plan that has an updated revegetation plan that I believe addresses your concern. Please advise.

Thanks, Cliff

Cliff P. Brunson, CEI, CRS
President
BBC International, Inc.
World-Wide Environmental Specialists
Mailing Address:
P. O. Box 805
Hobbs, NM 88241-0805 USA
Shipping Address:
1324 W. Marland St.
Hobbs, NM 88240 USA
Phone: (575) 397-6388
Fax: (575) 397-0397
E-Mail: cbrunson@bbcinternational.com



Confidentiality Notice: This electronic transmission (and any attached documents) is intended only for the person(s) to whom it is addressed and may contain information that is privileged, confidential, or otherwise protected from disclosure. If you have received this transmission in error, please immediately notify the sender by e-mail or by telephone call to (575) 397-6388 for handling instructions. Any disclosure or distribution of the contents of this transmission by anyone other than the named recipient(s) is strictly prohibited.

From: Groves, Amber [<mailto:agroves@slo.state.nm.us>]
Sent: Monday, June 12, 2017 7:21 AM
To: Cliff Brunson <cbrunson@bbcinternational.com>; Casey_Summers@oxy.com;
Olivia.Yu@state.nm.us
Cc: kswinney@bbcinternational.com; kathy@bbcinternational.com; jgilkey@bbcinternational.com;
Jennifer_Smith@oxy.com
Subject: RE: OXY - Shell State #3 CTB - Remediation Plan

Cliff,

NMSLO requests that your seed mixture contain at least one forb.

Thank you,

Amber Groves

Remediation Specialist
Field Operations Division
(575)392-3697
(575)263-3209 cell
New Mexico State Land Office
2827 N. Dal Paso Suite 117
Hobbs, NM 88260

.....
CONFIDENTIALITY NOTICE - This e-mail transmission, including all documents, files, or previous e-mail messages attached hereto, may contain confidential and/or legally privileged information. If you are not the intended recipient, or a person responsible for delivering it to the intended recipient, you are hereby notified that you must not read this transmission and that any disclosure, copying, printing, distribution, or use of any of the information contained in and/or attached to this transmission is **STRICTLY PROHIBITED**. If you have received this transmission in error, please immediately notify the sender and delete the original transmission and its attachments without reading or saving in any manner. Thank you.

From: Cliff Brunson [<mailto:cbrunson@bbcinternational.com>]
Sent: Saturday, June 10, 2017 5:14 PM
To: Groves, Amber <agroves@slo.state.nm.us>; Casey_Summers@oxy.com; Olivia.Yu@state.nm.us
Cc: kswinney@bbcinternational.com; kathy@bbcinternational.com; jgilkey@bbcinternational.com; Jennifer_Smith@oxy.com
Subject: RE: OXY - Shell State #3 CTB - Remediation Plan

Amber,

The revegetation plan had been added to the attached remediation packet that was submitted and approved with modifications from the NMOCD. It is page 3 of the attached document. I hope this meets your expectations.

Thanks, Cliff

Cliff P. Brunson, CEI, CRS
President
BBC International, Inc.
World-Wide Environmental Specialists
Mailing Address:
P. O. Box 805
Hobbs, NM 88241-0805 USA
Shipping Address:
1324 W. Marland St.
Hobbs, NM 88240 USA
Phone: (575) 397-6388
Fax: (575) 397-0397
E-Mail: cbrunson@bbcinternational.com



Confidentiality Notice: This electronic transmission (and any attached documents) is intended only for the person(s) to whom it is addressed and may contain information that is privileged, confidential, or otherwise protected from disclosure. If you have received this transmission in error, please immediately notify the sender by e-mail or by telephone call to (575) 397-6388 for handling instructions. Any disclosure or distribution of the contents of this transmission by anyone other than the named recipient(s) is strictly prohibited.

From: Groves, Amber [<mailto:agroves@slo.state.nm.us>]
Sent: Monday, June 5, 2017 4:07 PM
To: Casey_Summers@oxy.com; Olivia.Yu@state.nm.us
Cc: cbrunson@bbcinternational.com; kswinney@bbcinternational.com;
kathy@bbcinternational.com; jgilkey@bbcinternational.com; Jennifer_Smith@oxy.com
Subject: RE: OXY - Shell State #3 CTB - Remediation Plan

Casey,

The revegetation plan should be included the original remediation document that was submitted to NMOCD. Once that is included and re-submitted, I will issue approval.

Thank you,

Amber Groves

Remediation Specialist
Field Operations Division
(575)392-3697
(575)263-3209 cell
New Mexico State Land Office
2827 N. Dal Paso Suite 117
Hobbs, NM 88260

.....
CONFIDENTIALITY NOTICE - This e-mail transmission, including all documents, files, or previous e-mail messages attached hereto, may contain confidential and/or legally privileged information. If you are not the intended recipient, or a person responsible for delivering it to the intended recipient, you are hereby notified that you must not read this transmission and that any disclosure, copying, printing, distribution, or use of any of the information contained in and/or attached to this transmission is STRICTLY PROHIBITED. If you have received this transmission in error, please immediately notify the sender and delete the original transmission and its attachments without reading or saving in any manner. Thank you.

From: Casey_Summers@oxy.com [mailto:Casey_Summers@oxy.com]
Sent: Monday, June 05, 2017 11:23 AM
To: Olivia.Yu@state.nm.us; Groves, Amber <agroves@slo.state.nm.us>
Cc: cbrunson@bbcinternational.com; kswinney@bbcinternational.com;
kathy@bbcinternational.com; jgilkey@bbcinternational.com; Jennifer_Smith@oxy.com
Subject: RE: OXY - Shell State #3 CTB - Remediation Plan

Amber,
Do you agree with the below?

BBC,

Will you please submit a reveg plan to SLO on the off location to the east side of the release?

Casey Summers
O: (575)-628-4152
C: (575)-513-8289

From: Yu, Olivia, EMNRD [<mailto:Olivia.Yu@state.nm.us>]
Sent: Friday, June 02, 2017 4:02 PM
To: Summers, Casey L <Casey_Summers@oxy.com>; Groves, Amber <agroves@slo.state.nm.us>
Cc: cbrunson@bbcinternational.com; kswinney@bbcinternational.com; kathy@bbcinternational.com; jgilkey@bbcinternational.com; Smith, Jennifer A <Jennifer_Smith@oxy.com>
Subject: [EXTERNAL] RE: OXY - Shell State #3 CTB - Remediation Plan

Dear Casey:

NMOCD will approve the delineation/remediation plan for 1RP-4440 with these modifications.

1. Excavate SP1, SP2, SP3, SP6, SP7, SP10, SP11, SP12 to 1 ft. bgs. Submit laboratory analyses of bottom and sidewall confirmation samples.
2. Scrape surface 6 inches at SP4 & SP5 is fine.
3. Excavate SP8 and SP9 to 2.5 ft. bgs. Submit laboratory analyses of bottom and sidewall confirmation samples.
4. Like approval from SLO required, along with any revegetation plan requirements for affected area off location.
5. Provide photographic documentation of corrective actions in the closure report.

Please confirm or contact me with concerns.

Thanks,
Olivia

From: Casey_Summers@oxy.com [mailto:Casey_Summers@oxy.com]
Sent: Thursday, May 11, 2017 3:07 PM
To: Yu, Olivia, EMNRD <Olivia.Yu@state.nm.us>
Cc: cbrunson@bbcinternational.com; kswinney@bbcinternational.com; kathy@bbcinternational.com; jgilkey@bbcinternational.com; Jennifer_Hudgens@oxy.com
Subject: FW: OXY - Shell State #3 CTB - Remediation Plan

Olivia,
This is the other one I was going to try and send you yesterday. Can you take a look at the attached and below? This is another plan that got lost in the mix of NMOCD personnel changes. Delineation does not meet the COA but that is because it was completed in September of last year. BLM approved of the plan in December so we are good to go there.

Thank you for your time and consideration.

Casey Summers
O: (575)-628-4152
C: (575)-513-8289

From: Cliff Brunson [<mailto:cbrunson@bbcinternational.com>]
Sent: Tuesday, November 01, 2016 12:19 PM
To: Kristen Lynch <Kristen.Lynch@state.nm.us>
Cc: Casey Summers <Casey_Summers@oxy.com>; jennifer_duarte@oxy.com; Ken Swinney <kswinney@bbcinternational.com>; Jennifer Gilkey <jgilkey@bbcinternational.com>; Kathy Purvis <kathy@bbcinternational.com>
Subject: OXY - Shell State #3 CTB - Remediation Plan

Kristen,

This e-mail is to confirm our discussion concerning the remediation plan for the OXY Shell State #3 CTB release. I have attached the information packet that we used in our discussion with a cover page describing the remediation plan that we agreed upon.

If you would please reply back via e-mail with your concurrence on this plan, it would be greatly appreciated.

Thanks, Cliff

Cliff P. Brunson, CEI, CRS
President
BBC International, Inc.
World-Wide Environmental Specialists
Mailing Address:
P. O. Box 805
Hobbs, NM 88241-0805 USA
Shipping Address:
1324 W. Marland St.
Hobbs, NM 88240 USA
Phone: (575) 397-6388
Fax: (575) 397-0397
E-Mail: cbrunson@bbcinternational.com



Confidentiality Notice: This electronic transmission (and any attached documents) is intended only for the person(s) to whom it is addressed and may contain information that is privileged, confidential, or otherwise protected from disclosure. If you have received this transmission in error, please immediately notify the sender by e-mail or by telephone call to (575) 397-6388 for handling instructions. Any disclosure or distribution of the contents of this transmission by anyone other than the named recipient(s) is strictly prohibited.

This email has been scanned by the Symantec Email Security.cloud service.
For more information please visit <http://www.symanteccloud.com>

This email has been scanned by the Symantec Email Security.cloud service.
For more information please visit <http://www.symanteccloud.com>

This email has been scanned by the Symantec Email Security.cloud service.
For more information please visit <http://www.symanteccloud.com>

This email has been scanned by the Symantec Email Security.cloud service.
For more information please visit <http://www.symanteccloud.com>

This email has been scanned by the Symantec Email Security.cloud service.
For more information please visit <http://www.symanteccloud.com>

This email has been scanned by the Symantec Email Security.cloud service.
For more information please visit <http://www.symanteccloud.com>





















From: Cliff Brunson
To: "Groves, Amber"; Casey_Summers@oxy.com; Olivia.Yu@state.nm.us
Cc: kswinney@bbcinternational.com; kathy@bbcinternational.com; jgilkey@bbcinternational.com; Jennifer_Smith@oxy.com
Subject: RE: OXY - Shell State #3 CTB - Remediation Plan
Date: Monday, June 12, 2017 3:03:45 PM
Attachments: [image005.png](#)
[image001.png](#)
[image002.png](#)
[Remediation Packet, Shell State #3 CTB.pdf](#)

Amber,

I have attached a revised remediation plan that has an updated revegetation plan that I believe addresses your concern. Please advise.

Thanks, Cliff

Cliff P. Brunson, CEI, CRS
President
BBC International, Inc.
World-Wide Environmental Specialists
Mailing Address:
P. O. Box 805
Hobbs, NM 88241-0805 USA
Shipping Address:
1324 W. Marland St.
Hobbs, NM 88240 USA
Phone: (575) 397-6388
Fax: (575) 397-0397
E-Mail: cbrunson@bbcinternational.com



Confidentiality Notice: This electronic transmission (and any attached documents) is intended only for the person(s) to whom it is addressed and may contain information that is privileged, confidential, or otherwise protected from disclosure. If you have received this transmission in error, please immediately notify the sender by e-mail or by telephone call to (575) 397-6388 for handling instructions. Any disclosure or distribution of the contents of this transmission by anyone other than the named recipient(s) is strictly prohibited.

From: Groves, Amber [mailto:agroves@slo.state.nm.us]
Sent: Monday, June 12, 2017 7:21 AM
To: Cliff Brunson <cbrunson@bbcinternational.com>; Casey_Summers@oxy.com; Olivia.Yu@state.nm.us
Cc: kswinney@bbcinternational.com; kathy@bbcinternational.com; jgilkey@bbcinternational.com; Jennifer_Smith@oxy.com
Subject: RE: OXY - Shell State #3 CTB - Remediation Plan

Cliff,

NMSLO requests that your seed mixture contain at least one forb.

Thank you,

Amber Groves

Remediation Specialist

Field Operations Division

(575)392-3697

(575)263-3209 cell

New Mexico State Land Office

2827 N. Dal Paso Suite 117

Hobbs, NM 88260

.....
CONFIDENTIALITY NOTICE - This e-mail transmission, including all documents, files, or previous e-mail messages attached hereto, may contain confidential and/or legally privileged information. If you are not the intended recipient, or a person responsible for delivering it to the intended recipient, you are hereby notified that you must not read this transmission and that any disclosure, copying, printing, distribution, or use of any of the information contained in and/or attached to this transmission is **STRICTLY PROHIBITED**. If you have received this transmission in error, please immediately notify the sender and delete the original transmission and its attachments without reading or saving in any manner. Thank you.

From: Cliff Brunson [<mailto:cbrunson@bbcinternational.com>]

Sent: Saturday, June 10, 2017 5:14 PM

To: Groves, Amber <agroves@slo.state.nm.us>; Casey_Summers@oxy.com; Olivia.Yu@state.nm.us

Cc: kswinney@bbcinternational.com; kathy@bbcinternational.com; jgilkey@bbcinternational.com; Jennifer_Smith@oxy.com

Subject: RE: OXY - Shell State #3 CTB - Remediation Plan

Amber,

The revegetation plan had been added to the attached remediation packet that was submitted and approved with modifications from the NMOCD. It is page 3 of the attached document. I hope this meets your expectations.

Thanks, Cliff

Cliff P. Brunson, CEI, CRS

President

BBC International, Inc.

World-Wide Environmental Specialists

Mailing Address:

P. O. Box 805

Hobbs, NM 88241-0805 USA

Shipping Address:

1324 W. Marland St.

Hobbs, NM 88240 USA

Phone: (575) 397-6388
Fax: (575) 397-0397
E-Mail: cbrunson@bbcinternational.com



Confidentiality Notice: This electronic transmission (and any attached documents) is intended only for the person(s) to whom it is addressed and may contain information that is privileged, confidential, or otherwise protected from disclosure. If you have received this transmission in error, please immediately notify the sender by e-mail or by telephone call to (575) 397-6388 for handling instructions. Any disclosure or distribution of the contents of this transmission by anyone other than the named recipient(s) is strictly prohibited.

From: Groves, Amber [<mailto:agroves@slo.state.nm.us>]
Sent: Monday, June 5, 2017 4:07 PM
To: Casey_Summers@oxy.com; Olivia.Yu@state.nm.us
Cc: cbrunson@bbcinternational.com; kswinney@bbcinternational.com;
kathy@bbcinternational.com; jgilkey@bbcinternational.com; Jennifer_Smith@oxy.com
Subject: RE: OXY - Shell State #3 CTB - Remediation Plan

Casey,

The revegetation plan should be included the original remediation document that was submitted to NMOCD. Once that is included and re-submitted, I will issue approval.

Thank you,

Amber Groves

Remediation Specialist
Field Operations Division
(575)392-3697
(575)263-3209 cell
New Mexico State Land Office
2827 N. Dal Paso Suite 117
Hobbs, NM 88260

.....
CONFIDENTIALITY NOTICE - This e-mail transmission, including all documents, files, or previous e-mail messages attached hereto, may contain confidential and/or legally privileged information. If you are not the intended recipient, or a person responsible for delivering it to the intended recipient, you are hereby notified that you must not read this transmission and that any disclosure, copying, printing, distribution, or use of any of the information contained in and/or attached to this transmission is **STRICTLY PROHIBITED**. If you have received this transmission in error, please immediately notify the sender and delete the original transmission and its attachments without reading or saving in any manner. Thank you.

From: Casey_Summers@oxy.com [mailto:Casey_Summers@oxy.com]
Sent: Monday, June 05, 2017 11:23 AM
To: Olivia.Yu@state.nm.us; Groves, Amber <agroves@slo.state.nm.us>
Cc: cbrunson@bbcinternational.com; kswinney@bbcinternational.com;
kathy@bbcinternational.com; igilkey@bbcinternational.com; Jennifer_Smith@oxy.com
Subject: RE: OXY - Shell State #3 CTB - Remediation Plan

Amber,
Do you agree with the below?

BBC,
Will you please submit a reveg plan to SLO on the off location to the east side of the release?

Casey Summers
O: (575)-628-4152
C: (575)-513-8289

From: Yu, Olivia, EMNRD [<mailto:Olivia.Yu@state.nm.us>]
Sent: Friday, June 02, 2017 4:02 PM
To: Summers, Casey L <Casey_Summers@oxy.com>; Groves, Amber <agroves@slo.state.nm.us>
Cc: cbrunson@bbcinternational.com; kswinney@bbcinternational.com;
kathy@bbcinternational.com; igilkey@bbcinternational.com; Smith, Jennifer A
<Jennifer_Smith@oxy.com>
Subject: [EXTERNAL] RE: OXY - Shell State #3 CTB - Remediation Plan

Dear Casey:

NMOCD will approve the delineation/remediation plan for 1RP-4440 with these modifications.

1. Excavate SP1, SP2, SP3, SP6, SP7, SP10, SP11, SP12 to 1 ft. bgs. Submit laboratory analyses of bottom and sidewall confirmation samples.
2. Scrape surface 6 inches at SP4 & SP5 is fine.
3. Excavate SP8 and SP9 to 2.5 ft. bgs. Submit laboratory analyses of bottom and sidewall confirmation samples.
4. Like approval from SLO required, along with any revegetation plan requirements for affected area off location.
5. Provide photographic documentation of corrective actions in the closure report.

Please confirm or contact me with concerns.

Thanks,
Olivia

From: Casey_Summers@oxy.com [mailto:Casey_Summers@oxy.com]
Sent: Thursday, May 11, 2017 3:07 PM

To: Yu, Olivia, EMNRD <Olivia.Yu@state.nm.us>
Cc: cbrunson@bbcinternational.com; kswinney@bbcinternational.com;
kathy@bbcinternational.com; jgilkey@bbcinternational.com; Jennifer_Hudgens@oxy.com
Subject: FW: OXY - Shell State #3 CTB - Remediation Plan

Olivia,

This is the other one I was going to try and send you yesterday. Can you take a look at the attached and below? This is another plan that got lost in the mix of NMOCD personnel changes. Delineation does not meet the COA but that is because it was completed in September of last year. BLM approved of the plan in December so we are good to go there.

Thank you for your time and consideration.

Casey Summers
O: (575)-628-4152
C: (575)-513-8289

From: Cliff Brunson [mailto:cbrunson@bbcinternational.com]
Sent: Tuesday, November 01, 2016 12:19 PM
To: Kristen Lynch <Kristen.Lynch@state.nm.us>
Cc: Casey Summers <Casey_Summers@oxy.com>; jennifer_duarte@oxy.com; Ken Swinney <kswinney@bbcinternational.com>; Jennifer Gilkey <jgilkey@bbcinternational.com>; Kathy Purvis <kathy@bbcinternational.com>
Subject: OXY - Shell State #3 CTB - Remediation Plan

Kristen,

This e-mail is to confirm our discussion concerning the remediation plan for the OXY Shell State #3 CTB release. I have attached the information packet that we used in our discussion with a cover page describing the remediation plan that we agreed upon.

If you would please reply back via e-mail with your concurrence on this plan, it would be greatly appreciated.

Thanks, Cliff

Cliff P. Brunson, CEI, CRS
President
BBC International, Inc.
World-Wide Environmental Specialists
Mailing Address:
P. O. Box 805
Hobbs, NM 88241-0805 USA
Shipping Address:
1324 W. Marland St.

Hobbs, NM 88240 USA
Phone: (575) 397-6388
Fax: (575) 397-0397
E-Mail: cbrunson@bbcinternational.com



Confidentiality Notice: This electronic transmission (and any attached documents) is intended only for the person(s) to whom it is addressed and may contain information that is privileged, confidential, or otherwise protected from disclosure. If you have received this transmission in error, please immediately notify the sender by e-mail or by telephone call to (575) 397-6388 for handling instructions. Any disclosure or distribution of the contents of this transmission by anyone other than the named recipient(s) is strictly prohibited.

This email has been scanned by the Symantec Email Security.cloud service.
For more information please visit <http://www.symanteccloud.com>

This email has been scanned by the Symantec Email Security.cloud service.
For more information please visit <http://www.symanteccloud.com>

This email has been scanned by the Symantec Email Security.cloud service.
For more information please visit <http://www.symanteccloud.com>

This email has been scanned by the Symantec Email Security.cloud service.
For more information please visit <http://www.symanteccloud.com>



PHONE (575) 397-6388 • FAX (575) 397- 0397 • 1324 W. MARLAND • P.O. BOX 805 • HOBBS, NM 88241-0805

New Mexico State Land Office Revegetation and Noxious Weed Management Plan

OXY – SHELL STATE #3 CTB

Revegetation Plan

Disturbed areas associated with the remediation efforts will be reseeded. If after one growing season, the vegetation has not taken hold, seeding may need to be repeated until revegetation is successful, as determined by the State Land Office. The seed will be spread by either using a hand-held broadcaster or tractor-mounted broadcaster and the area will be raked or dragged to cover the seed. Since the seed will be broadcast, the pounds per acre will be double over the amount used by drill planting.

The seed mixture will be the appropriate mixture for the specific site and planted in the required amounts of pounds pure live seed (PLS) per acre. Commercially sold seed will be either certified or registered and will not contain primary or secondary noxious weeds.

Gamma grass – 40% - 1.5 lbs. PLS

Buffalo grass – 40% - 1.5 lbs. PLS

Side oats – 10% - 0.5% lbs. PLS

Four wing Salt bush – 10% - 1.5 lbs. PLS

Noxious Weed Management Plan

The site will be visited to assess the establishment of vegetative growth. Personnel performing the site visit will also look for the presence of noxious weeds at the site as indicated on the New Mexico Noxious Weeds List specified on the United States Department of Agriculture website. If a noxious weed is observed at the site, the NMSLO will be contacted to determine the most effective manner to eradicate it.

District I
1625 N. French Dr., Hobbs, NM 88240
Phone:(575) 393-6161 Fax:(575) 393-0720
District II
811 S. First St., Artesia, NM 88210
Phone:(575) 748-1283 Fax:(575) 748-9720
District III
1000 Rio Brazos Rd., Aztec, NM 87410
Phone:(505) 334-6178 Fax:(505) 334-6170
District IV
1220 S. St Francis Dr., Santa Fe, NM 87505
Phone:(505) 476-3470 Fax:(505) 476-3462

State of New Mexico
Energy, Minerals and Natural Resources
Oil Conservation Division
1220 S. St Francis Dr.
Santa Fe, NM 87505

CONDITIONS

Action 203804

CONDITIONS

Operator: OXY USA INC P.O. Box 27570 Houston, TX 772277570	OGRID: 96694
	Action Number: 203804
	Action Type: [IM-SD] Incident File Support Doc (ENV) (IM-BNF)

CONDITIONS

Created By	Condition	Condition Date
bhall	None	4/5/2023