



ENSOLUM

CLOSURE REPORT

Property:

Mesa Verde Bone Spring 046H

**Lea County, New Mexico
32.2120 N, 103.6843 W
NMOCD Incident ID: nAPP2308945772
API# 30-025-48816**

August 1, 2023
Ensolum Project No. 03B1417064

Prepared for:

**Oxy USA Inc.
P.O. Box 4294
Houston, TX 77210
Attn: Mr. Wade Dittrich**

Prepared by:


Beaux Jennings
Senior Project Manager


Heather Holthaus
Senior Project Manager



TABLE OF CONTENTS

1.0	INTRODUCTION.....	1
1.1	EXECUTIVE SUMMARY	1
1.2	SITE DESCRIPTION & BACKGROUND	2
1.3	PROJECT OBJECTIVE.....	2
2.0	CLOSURE CRITERIA.....	2
3.0	SOIL REMEDIATION ACTIVITIES.....	3
4.0	SOIL SAMPLING PROGRAM	4
5.0	SOIL LABORATORY ANALYTICAL METHODS	4
6.0	DATA EVALUATION.....	4
7.0	RECLAMATION AND RE-VEGETATION	5
8.0	FINDINGS AND RECOMMENDATION	5
9.0	STANDARDS OF CARE, LIMITATIONS, AND RELIANCE.....	6
9.1	STANDARD OF CARE.....	6
9.2	LIMITATIONS	6
9.3	RELIANCE.....	6

LIST OF APPENDICES

Appendix A: Figures

Appendix B: Supporting Documentation

Appendix C: Photographic Documentation

Appendix D: Table

Appendix E: Laboratory Data Sheets & Chain-of-Custody Documentation

Appendix F: C-141



ENSOLUM

CLOSURE REPORT

Mesa Verde Bone Spring 046H

**Lea County, New Mexico
32.2120 N, 103.6843 W
NMOCD Incident ID: nAPP2308945772
API# 30-025-48816**

Ensolum Project No. 03B1417064

1.0 INTRODUCTION

1.1 Executive Summary

- On November 13, 2022, a release of processed oil occurred from a frac tank due to human error. Approximately 15 barrels (bbls) of processed oil were released onto the ground surface, impacting an area approximately 60 feet long by 25 feet wide. During initial response actions, approximately 10 bbs of processed oil were recovered.
- On May 18, 2023, subsequent to completion of excavation activities, Ensolum collected a total of 20 composite soil samples from the excavation floor (FS-1 through FS-20) and three composite soil samples from the excavation sidewalls (SW-1, SW-2, and SW-3). The floor samples were collected at a depth of two feet below ground surface (bgs), and the sidewall samples were collected at a depth of 0-2 feet bgs.
- Based on laboratory analytical data, additional excavation was required. On June 16, 2023, subsequent to completion of additional excavation activities, Ensolum collected a total of three composite soil samples from the excavation floor (FS-1, FS-7, and FS-8) and one composite soil sample from the excavation sidewall (SW-3). The floor samples were collected at a depth of three feet bgs, and the sidewall sample was collected at a depth of 0-2 feet bgs.
- Based on laboratory analytical data, additional excavation was required. On June 28, 2023, subsequent to completion of additional excavation activities, Ensolum collected one composite soil sample from the excavation sidewall (SW-3) at a depth of 0-2 feet bgs. Additionally, Ensolum collected four delineation background soil samples from locations outside of the excavation area (BG-N, BG-S, BG-E, and BG-W) at a depth of 0-0.5 feet bgs.
- The primary objective of the closure activities was to reduce chemical of concern (COC) concentrations in the on-Site soils to below the applicable New Mexico Energy, Minerals and Natural Resources Department (EMNRD) Oil Conservation Division (OCD) Closure Criteria for Soils Impacted by a Release using the New Mexico Administrative Code (NMAC) 19.15.29 *Releases* as guidance.
- The final excavation area was a triangular shape that measured approximately 80 feet on each side. The maximum depth of the impacted area measured approximately three feet bgs.
- Based on the laboratory analytical results, the final composite soil samples collected from the excavation area and the confirmation delineation samples collected outside the excavation area did not exhibit benzene, total benzene, toluene, ethylbenzene, and xylene (BTEX), total petroleum hydrocarbons (TPH), gasoline range organics (GRO), diesel range organics (DRO), motor oil range organics (MRO) or chloride concentrations above the applicable NMOCD Closure Criteria. Subsequent to the results of the confirmation soil sampling, the excavated soils were removed and taken off-Site for proper disposal and the excavated area was backfilled with clean fill material, and then contoured to the original surrounding grade.

Oxy USA Inc.
 Closure Report
 Mesa Verde Bone Spring 046H
 August 1, 2023



Based on field observations and laboratory analytical results, no additional investigation or corrective action appears warranted at this time.

1.2 Site Description & Background

Operator:	Oxy USA Inc. (Oxy)
Site Name:	Mesa Verde Bone Spring 046H
Location:	Lea County, New Mexico 32.2120 N, 103.6843 W
Property:	Bureau of Land Management (BLM)
Regulatory:	New Mexico Energy, Minerals and Natural Resources Department (EMNRD) Oil Conservation Division (OCD)

The Topographic Map depicting the location of the Site is included as **Figure 1**, the Site Vicinity Map is included as **Figure 2**, the Site Map indicating the locations of composite soil samples is included as **Figure 3**, and the Closure Criteria Map is included as **Figure 4** in **Appendix A**.

1.3 Project Objective

The primary objective of the closure activities was to reduce COC concentrations in the on-Site soils to below the applicable New Mexico EMNRD OCD closure criteria concentrations.

2.0 CLOSURE CRITERIA

The Site is subject to regulatory oversight by the New Mexico EMNRD OCD. In order to address activities related to exempt oil and gas releases, the New Mexico EMNRD OCD references NMAC 19.15.29 *Releases*, which establishes investigation and abatement action requirements for sites subject to reporting and/or corrective action. Ensolum utilized information provided by Oxy, the general site characteristics, and information available from the New Mexico Office of the State Engineer (OSE) and the New Mexico EMNRD OCD Imaging database to determine the appropriate closure criteria for the Site.

- The Site is not located within 300 feet of a New Mexico EMNRD OCD-defined continuously flowing watercourse or any other significant watercourse.
- The Site is not located within 200 feet of a lakebed, sinkhole, or playa lake.
- The Site is not located within 300 feet from an occupied permanent residence, school, hospital, institution, or church.
- According to the OSE WRSS database there are no private, domestic freshwater wells used by less than five (5) households for domestic or stock water purposes identified within 500 feet of the Site.
- According to the OSE WRSS database there are no freshwater wells identified within 1,000 feet of the Site as declared in the previous bullet.
- The Site is not located within incorporated municipal boundaries or within a defined municipal fresh water well field covered under a municipal ordinance adopted pursuant to NMSA 1978, Section 3-27-3.
- The Site is not located within 300 feet of a wetland.

Oxy USA Inc.
 Closure Report
 Mesa Verde Bone Spring 046H
 August 1, 2023



- Based on information identified on the New Mexico Mining and Minerals Division's GIS, Maps and Mine Data database, the Site is not located within an area overlying a subsurface mine.
- Based on the Karst Occurrence Potential (.kmz) provided by the Bureau of Land Management (BLM), the Site is not located within an unstable area.
- The Site is noted to be located within an area of minimal flood hazard.

Based on the identified siting criteria, cleanup goals for soils remaining in place at the Site include:

Closure Criteria for Soils Impacted by a Release			
Minimum depth below any point within horizontal boundary of the release to groundwater less than 10,000 mg/l TDS	Constituent	Method	Limit
≤ 50 feet	Chloride	EPA 300.0 or SM4500 Cl B	600 mg/kg
	TPH (GRO+DRO+MRO)	EPA SW-846 Method 8015M	100 mg/kg
	BTEX	EPA SW-846 Method 8021B or 8260B	50 mg/kg
	Benzene	EPA SW-846 Method 8021B or 8260B	10 mg/kg

3.0 SOIL REMEDIATION ACTIVITIES

On November 13, 2022, a release of processed oil occurred from a frac tank due to human error. Approximately 15 bbls of processed oil were released onto the ground surface, impacting an area approximately 60 feet long by 25 feet wide. During initial response actions, approximately 10 bbs of processed oil were recovered.

On May 18, 2023, subsequent to completion of excavation activities, Ensolum collected a total of 20 composite soil samples from the excavation floor (FS-1 through FS-20) and three composite soil samples from the excavation sidewalls (SW-1, SW-2, and SW-3). The floor samples were collected at a depth of two feet bgs, and the sidewall samples were collected at a depth of 0-2 feet bgs.

Based on laboratory analytical data, additional excavation was required. On June 16, 2023, subsequent to completion of additional excavation activities, Ensolum collected a total of three composite soil samples from the excavation floor (FS-1, FS-7, and FS-8) and one composite soil sample from the excavation sidewall (SW-3). The floor samples were collected at a depth of three feet bgs, and the sidewall sample was collected at a depth of 0-2 feet bgs.

Based on laboratory analytical data, additional excavation was required. On June 28, 2023, subsequent to completion of additional excavation activities, Ensolum collected one composite soil sample from the excavation sidewall (SW-3) at a depth of 0-2 feet bgs. Additionally, Ensolum collected four delineation background soil samples from locations outside of the excavation area (BG-N, BG-S, BG-E, and BG-W) at a depth of 0-0.5 feet bgs.

Based on the laboratory analytical data of the final excavation soil samples, no additional excavation was required. Subsequent to the results of the final composite soil sampling, the excavated soils were removed and taken off-Site for proper disposal.

Oxy USA Inc.
Closure Report
Mesa Verde Bone Spring 046H
August 1, 2023



The final excavation area was a triangular shape that measured approximately 80 feet on each side. The maximum depth of the impacted area measured approximately three feet bgs.

The lithology encountered during the completion of sampling activities consisted primarily of caliche and reddish yellow silty sand.

Figure 3 identifies approximate soil sample locations and approximate dimensions of the impacted area with respect to the Site (**Appendix A**). Photographic documentation of the field activities is included in **Appendix C**.

4.0 SOIL SAMPLING PROGRAM

Ensolum's composite soil sampling program included the collection of a total of 25 composite soil samples from 23 locations within the excavation area (FS-1 through FW-20, SW-1, SW-2, and SW-3), and four delineation soil sample from four locations outside of the excavation area (BG-N, BG-S, BG-E, and BG-W). The soil samples were collected at a depths ranging from zero to three feet bgs.

The soil samples were collected and placed in laboratory prepared glassware, labeled/sealed using laboratory supplied labels and custody seals, and stored on ice in a cooler. The samples were relinquished to Cardinal Laboratories in Hobbs, New Mexico for standard laboratory analysis.

5.0 SOIL LABORATORY ANALYTICAL METHODS

The soil samples were analyzed for BTEX utilizing Environmental Protection Agency (EPA) SW-846 Method 8021B, TPH GRO/DRO/MRO utilizing EPA SW-846 Method 8015M, and chloride utilizing EPA Method 4500-CI B.

Laboratory analytical results are summarized in **Table 1** in **Appendix D**. The executed chain-of-custody forms and laboratory analytical reports are provided in **Appendix E**.

6.0 DATA EVALUATION

Ensolum compared the benzene, total BTEX, TPH GRO/DRO/MRO, and chloride concentrations associated with the composite soil samples collected from the excavation floor (FS-1 through FS-20) and the excavation sidewalls (SW-1, SW-2, and SW-2), and the confirmation delineation samples collected outside the excavation area (BG-N, BG-S, BG-E, and BG-W) to the applicable NMOCD Closure Criteria.

- Laboratory analytical results indicate benzene concentrations for the final composite soil samples collected within the excavation area and the confirmation delineation samples collected outside the excavation area are below the laboratory sample detection limits (SDLs) and/or the applicable NMOCD Closure Criteria of 10 milligrams per kilogram (mg/kg).
- Laboratory analytical results indicate that total BTEX concentrations for the final composite soil samples collected within the excavation area and the confirmation delineation samples collected outside the excavation area are below the laboratory SDLs and/or the applicable NMOCD Closure Criteria of 50 mg/kg.
- Laboratory analytical results indicate combined TPH GRO/DRO/MRO concentrations for the final composite soil samples collected within the excavation area and the confirmation delineation samples collected outside the excavation area are below the applicable NMOCD Closure Criteria of 100 mg/kg from ≤50 feet.
- Laboratory analytical results indicate chloride concentrations for the final composite soil samples collected within the excavation area and the confirmation delineation samples collected outside the excavation area are below the applicable NMOCD Closure Criteria of 600 mg/kg from ≤50 feet.

Oxy USA Inc.
Closure Report
Mesa Verde Bone Spring 046H
August 1, 2023



Laboratory analytical results are summarized in **Table 1** in **Appendix D**.

7.0 RECLAMATION AND RE-VEGETATION

Subsequent to the results of the final confirmation soil sampling, the identified impacted soils were removed and taken off-Site for proper disposal. The excavated area was backfilled with clean fill material and caliche, and then contoured to the original surrounding grade. The spill area is a caliche pad and does not require reclamation or revegetation at this time.

8.0 FINDINGS AND RECOMMENDATION

- On November 13, 2022, a release of processed oil occurred from a frac tank due to human error. Approximately 15 bbls of processed oil were released onto the ground surface, impacting an area approximately 60 feet long by 25 feet wide. During initial response actions, approximately 10 bbs of processed oil were recovered.
- On May 18, 2023, subsequent to completion of excavation activities, Ensolum collected a total of 20 composite soil samples from the excavation floor (FS-1 through FS-20) and three composite soil samples from the excavation sidewalls (SW-1, SW-2, and SW-3). The floor samples were collected at a depth of two feet bgs, and the sidewall samples were collected at a depth of 0-2 feet bgs.
- Based on laboratory analytical data, additional excavation was required. On June 16, 2023, subsequent to completion of additional excavation activities, Ensolum collected a total of three composite soil samples from the excavation floor (FS-1, FS-7, and FS-8) and one composite soil sample from the excavation sidewall (SW-3). The floor samples were collected at a depth of three feet bgs, and the sidewall sample was collected at a depth of 0-2 feet bgs.
- Based on laboratory analytical data, additional excavation was required. On June 28, 2023, subsequent to completion of additional excavation activities, Ensolum collected one composite soil sample from the excavation sidewall (SW-3) at a depth of 0-2 feet bgs. Additionally, Ensolum collected four delineation background soil samples from locations outside of the excavation area (BG-N, BG-S, BG-E, and BG-W) at a depth of 0-0.5 feet bgs.
- The primary objective of the closure activities was to reduce COC concentrations in the on-Site soils to below the applicable New Mexico EMNRD OCD Closure Criteria for Soils Impacted by a Release using the NMAC 19.15.29 *Releases* as guidance.
- The final excavation area was a triangular shape that measured approximately 80 feet on each side. The maximum depth of the impacted area measured approximately three feet bgs.
- Based on the laboratory analytical results, the final composite soil samples collected from the excavation area and the confirmation delineation samples collected outside the excavation area did not exhibit benzene, BTEX, TPH GRO/DRO/MRO or chloride concentrations above the applicable NMOCD Closure Criteria.
- Subsequent to the results of the final confirmation soil sampling, the excavated soils were removed and taken off-Site for proper disposal. The excavated area was backfilled with clean fill material, and then contoured to the original surrounding grade. The spill area is a caliche pad and does not require reclamation or revegetation at this time.

Based on field observations and laboratory analytical results, no additional investigation or corrective action appears warranted at this time.

Oxy USA Inc.
Closure Report
Mesa Verde Bone Spring 046H
August 1, 2023



9.0 STANDARDS OF CARE, LIMITATIONS, AND RELIANCE

9.1 Standard of Care

Ensolum's services were performed in accordance with standards customarily provided by a firm rendering the same or similar services in the area during the same time period. Ensolum makes no warranties, express or implied, as to the services performed hereunder. Additionally, Ensolum does not warrant the work of third parties supplying information used in the report (e.g., laboratories, regulatory agencies, or other third parties). This scope of services was performed in accordance with the scope of work agreed with the client, as detailed in our proposal.

9.2 Limitations

Findings, conclusions, and recommendations resulting from these services are based upon information derived from the on-Site activities and other services performed under this scope of work and it should be noted that this information is subject to change over time. Certain indicators of the presence of hazardous substances, petroleum products, or other constituents may have been latent, inaccessible, unobservable, or not present during these services, and Ensolum cannot represent that the Site contains no hazardous substances, toxic materials, petroleum products, or other latent conditions beyond those identified during the investigation. Environmental conditions at other areas or portions of the Site may vary from those encountered at actual sample locations. Ensolum's findings, and recommendations are based solely upon data available to Ensolum at the time of these services.

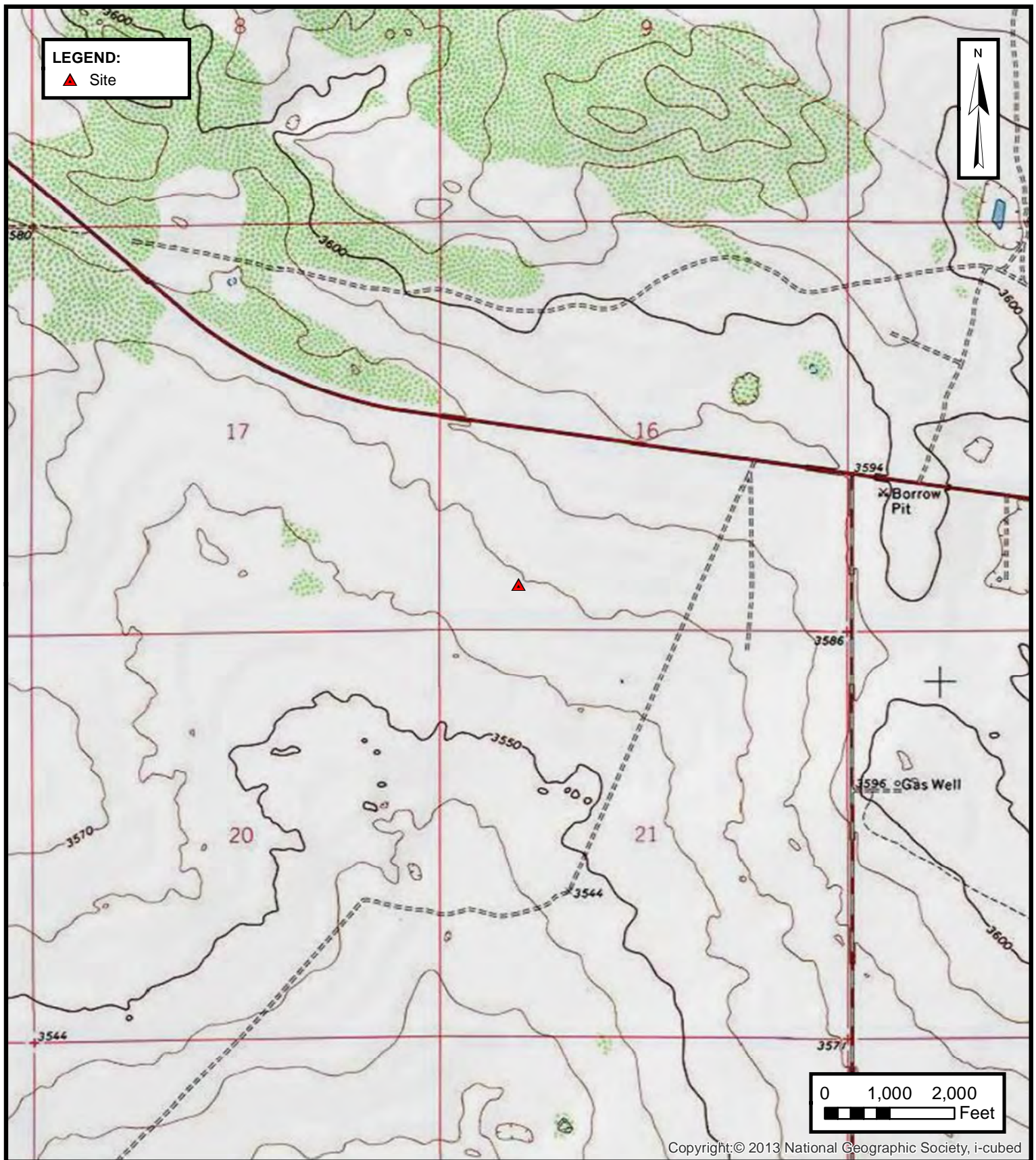
9.3 Reliance

This report has been prepared for the exclusive use of Oxy USA, Inc., and any authorization for use or reliance by any other party (except a governmental entity having jurisdiction over the Site) is prohibited without the express written authorization Oxy USA, Inc. and Ensolum. Any unauthorized distribution or reuse is at the client's sole risk. Notwithstanding the foregoing, reliance by authorized parties will be subject to the terms, conditions and limitations stated in the Closure Report, and Ensolum's Master Services Agreement. The limitation of liability defined in the agreement is the aggregate limit of Ensolum's liability to the client.



APPENDIX A

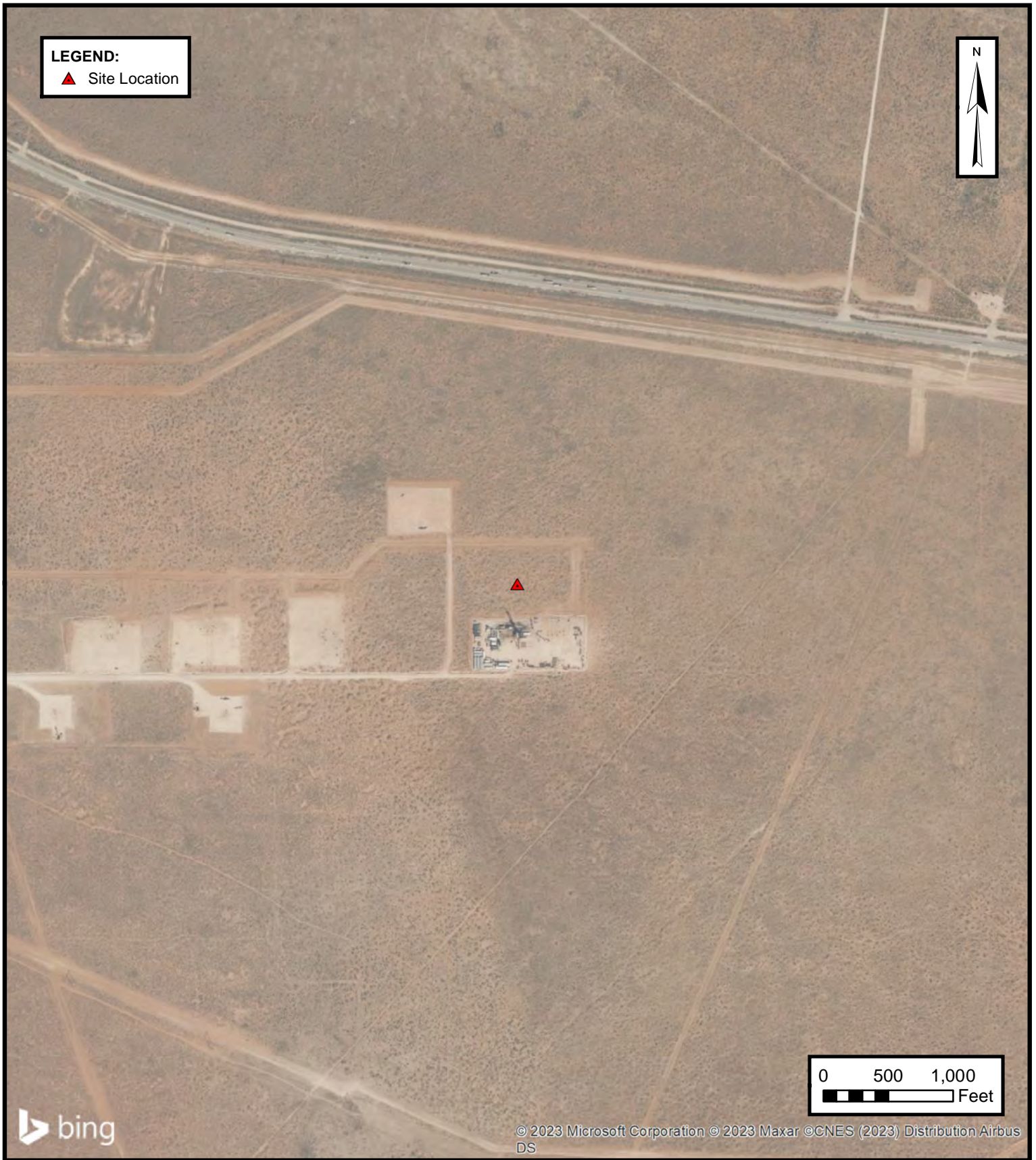
Figures



TOPOGRAPHIC MAP
OXY USA INC.
MESA VERDE BONE SPRING 046H
Lea County, New Mexico
32.2120° N, 103.6843° W

PROJECT NUMBER: 03B1417064

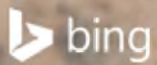
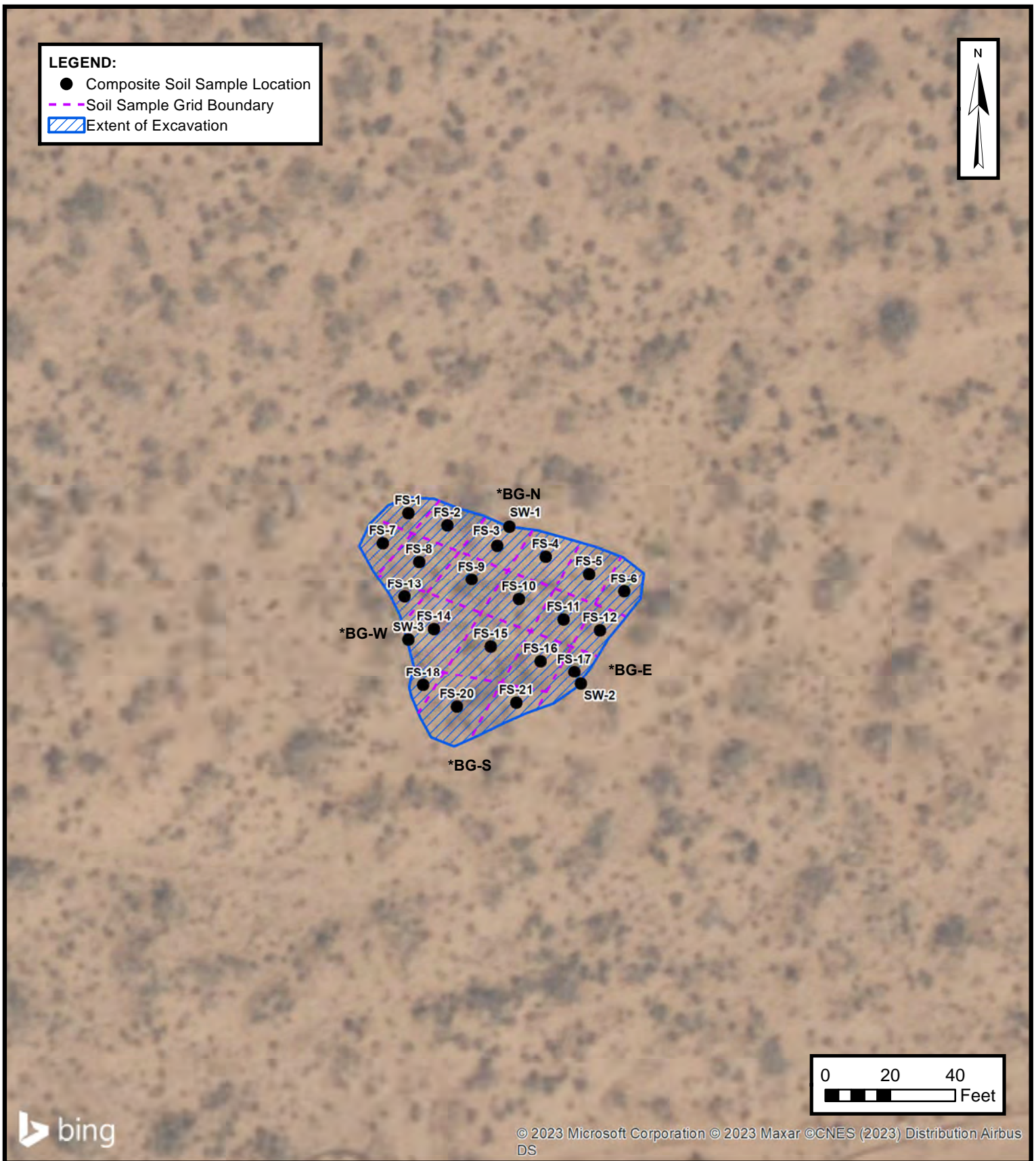
FIGURE
1



SITE VICINITY MAP
OXY USA INC.
MESA VERDE BONE SPRING 046H
Lea County, New Mexico
32.2120° N, 103.6843° W

PROJECT NUMBER: 03B1417064

FIGURE
2



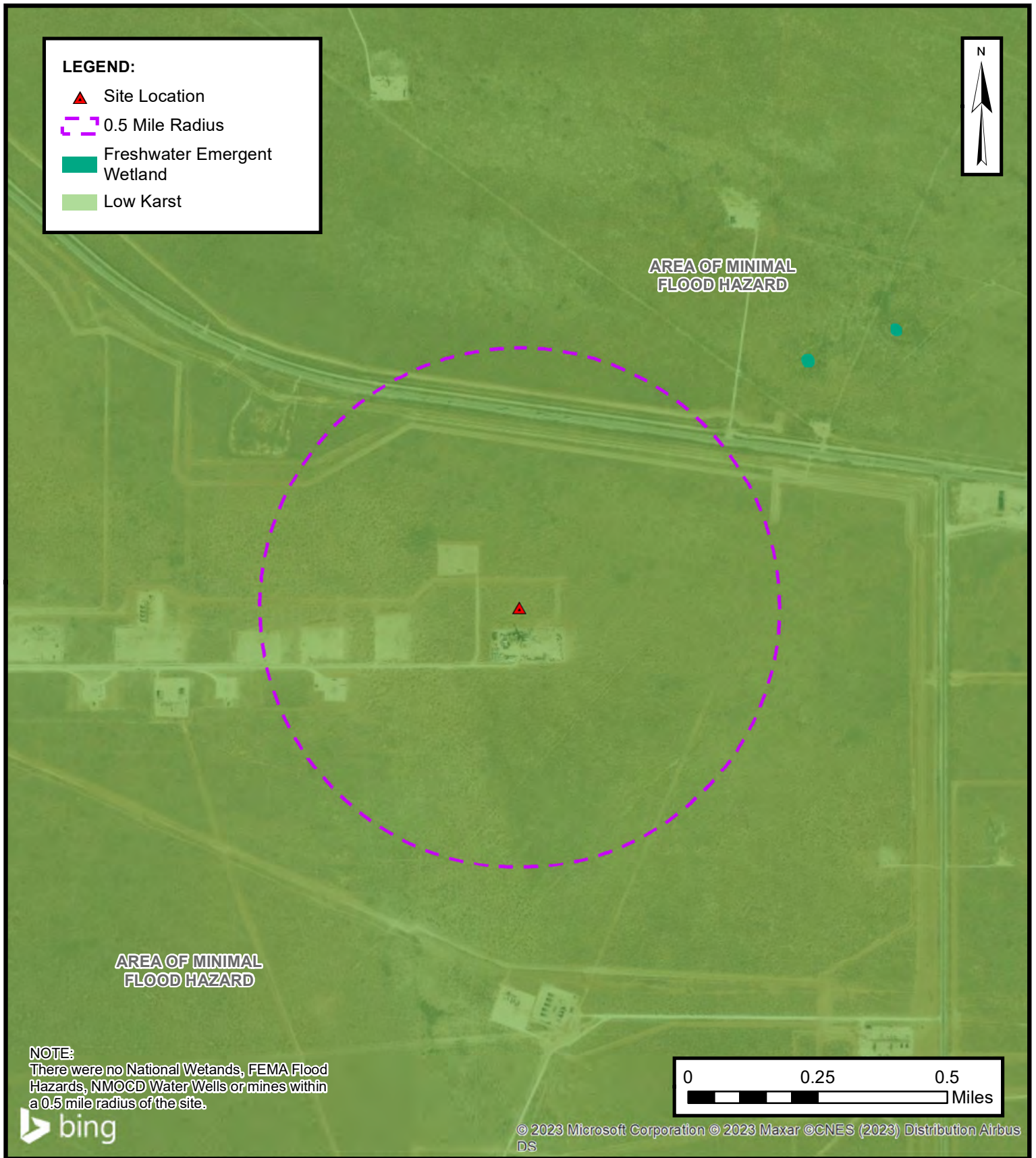
SITE MAP

OXY USA INC.
MESA VERDE BONE SPRING 046H
Lea County, New Mexico
32.2120° N, 103.6843° W

PROJECT NUMBER: 03B1417064

FIGURE

3



CLOSURE CRITERIA MAP

OXY USA INC.
MESA VERDE BONE SPRING 046H
Lea County, New Mexico
32.2120° N, 103.6843° W

PROJECT NUMBER: 03B1417064

FIGURE

4

ENSOLUM
Environmental, Engineering and
Hydrogeologic Consultants



APPENDIX B

Supporting Documentation

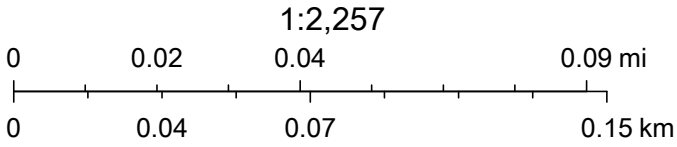
Active Mines in New Mexico



7/25/2023, 5:07:46 PM

Land Ownership

- BLM
- PLSS Second Division
- PLSS First Division



U.S. BLM, Maxar, Microsoft, Esri, HERE, Garmin, iPC, BLM

National Flood Hazard Layer FIRMette



103°41'22"W 32°12'58"N



0 250 500 1,000 1,500 2,000 Feet

1:6,000

103°40'45"W 32°12'28"N

Released to Imaging: 10/30/2023 9:41:03 AM

Basemap Imagery Source: USGS National Map 2023

Legend

SEE FIS REPORT FOR DETAILED LEGEND AND INDEX MAP FOR FIRM PANEL LAYOUT

SPECIAL FLOOD HAZARD AREAS		Without Base Flood Elevation (BFE) Zone A, V, A99
		With BFE or Depth Zone AE, AO, AH, VE, AR
		Regulatory Floodway
OTHER AREAS OF FLOOD HAZARD		0.2% Annual Chance Flood Hazard, Areas of 1% annual chance flood with average depth less than one foot or with drainage areas of less than one square mile Zone X
		Future Conditions 1% Annual Chance Flood Hazard Zone X
		Area with Reduced Flood Risk due to Levee. See Notes. Zone X
		Area with Flood Risk due to Levee Zone D
OTHER AREAS		NO SCREEN Area of Minimal Flood Hazard Zone X
		Effective LOMRs
		Area of Undetermined Flood Hazard Zone D
GENERAL STRUCTURES		Channel, Culvert, or Storm Sewer
		Levee, Dike, or Floodwall
OTHER FEATURES		20.2 Cross Sections with 1% Annual Chance Water Surface Elevation
		17.5 Coastal Transect
		Base Flood Elevation Line (BFE)
		Limit of Study
		Jurisdiction Boundary
		Coastal Transect Baseline
		Profile Baseline
MAP PANELS		Digital Data Available
		No Digital Data Available
		Unmapped







The pin displayed on the map is an approximate point selected by the user and does not represent an authoritative property location.

This map complies with FEMA's standards for the use of digital flood maps if it is not void as described below. The basemap shown complies with FEMA's basemap accuracy standards

The flood hazard information is derived directly from the authoritative NFHL web services provided by FEMA. This map was exported on 7/25/2023 at 6:15 PM and does not reflect changes or amendments subsequent to this date and time. The NFHL and effective information may change or become superseded by new data over time.

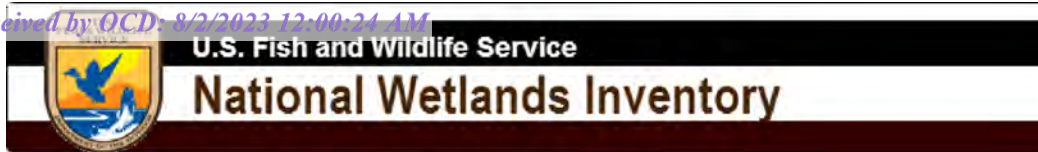
This map image is void if the one or more of the following map elements do not appear: basemap imagery, flood zone labels, legend, scale bar, map creation date, community identifiers, FIRM panel number, and FIRM effective date. Map images for unmapped and unmodernized areas cannot be used for regulatory purposes.

Legend

-  32.2120, -103.6843
-  High
-  Low
-  Medium



32.2120, -103.6843



NWI Map



July 25, 2023

Wetlands

- Estuarine and Marine Deepwater
- Estuarine and Marine Wetland

- Freshwater Emergent Wetland
- Freshwater Forested/Shrub Wetland
- Freshwater Pond

- Lake
- Other
- Riverine

This map is for general reference only. The US Fish and Wildlife Service is not responsible for the accuracy or currentness of the base data shown on this map. All wetlands related data should be used in accordance with the layer metadata found on the Wetlands Mapper web site.

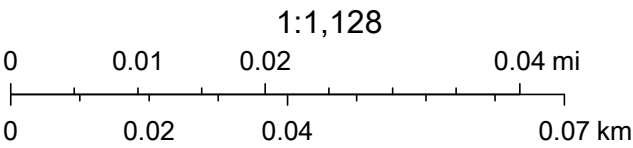
OCD Well Locations



7/25/2023, 5:06:11 PM

Wells - Large Scale

- Oil, Active
- Oil, New
- PLSS Second Division
- PLSS First Division



Maxar, Microsoft, Oil Conservation Division of the New Mexico Energy, Minerals and Natural Resources Department., OCD, Esri, HERE, Garmin, IPC, BLM

OSE POD Locations Map



7/25/2023, 5:02:19 PM

GIS WATERS PODs

Active

Pending

OSE District Boundary

Water Right Regulations

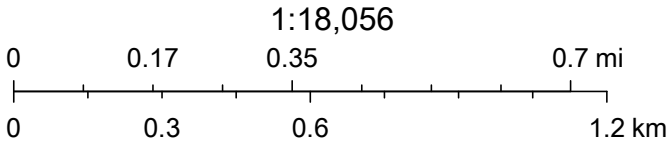
Closure Area

New Mexico State Trust Lands

Subsurface Estate

Both Estates

SiteBoundaries



Esri, HERE, iPC, U.S. Department of Energy Office of Legacy Management, Esri, HERE, Garmin, iPC, Maxar



APPENDIX C

Photographic Documentation



View of the initial release area, prior to excavation activities, facing east.



View of the excavation area during response action activities, facing south.



View of the excavation area during response action activities, facing east.



View of the excavation area during response action activities, facing northeast.



APPENDIX D

Tables

TABLE 1
SOIL SAMPLE ANALYTICAL RESULTS
Mesa Verde Bone Spring 046H
Oxy USA, Inc.
Lea County, New Mexico
Ensolum Project No. 03B1417064

Sample Designation	Date	Depth (feet bgs)	Benzene (mg/kg)	Toluene (mg/kg)	Ethylbenzene (mg/kg)	Total Xylenes (mg/kg)	Total BTEX (mg/kg)	TPH GRO (mg/kg)	TPH DRO (mg/kg)	TPH MRO (mg/kg)	Total TPH (GRO+DRO+MRO) (mg/kg)	Chloride (mg/kg)
New Mexico Oil Conservation Division Closure Criteria for Soils Impacted by a Release (≤ 50 feet)			10	NE	NE	NE	50	NE	NE	NE	100	600
Floor Sample Analytical Results												
FS-1	05/18/2023	2	<0.050	<0.050	<0.050	<0.150	<0.300	<10.0	<10.0	<10.0	<10.0	608
	06/16/2023	3	NS	NS	NS	NS	NS	NS	NS	NS	NS	32.0
FS-2	05/18/2023	2	<0.050	<0.050	<0.050	<0.150	<0.300	<10.0	<10.0	<10.0	<10.0	272
FS-3	05/18/2023	2	<0.050	<0.050	<0.050	<0.150	<0.300	<10.0	18.4	17.4	35.8	240
FS-4	05/18/2023	2	<0.050	<0.050	<0.050	<0.150	<0.300	<10.0	<10.0	<10.0	<10.0	240
FS-5	05/18/2023	2	<0.050	<0.050	<0.050	<0.150	<0.300	<10.0	<10.0	<10.0	<10.0	64.0
FS-6	05/18/2023	2	<0.050	<0.050	<0.050	<0.150	<0.300	<10.0	33.1	<10.0	33.1	400
FS-7	05/18/2023	2	<0.050	<0.050	<0.050	<0.150	<0.300	<10.0	<10.0	<10.0	<10.0	3,120
	06/16/2023	3	NS	NS	NS	NS	NS	NS	NS	NS	NS	32.0
FS-8	05/18/2023	2	<0.050	<0.050	<0.050	<0.150	<0.300	<10.0	<10.0	<10.0	<10.0	1,410
	06/16/2023	3	NS	NS	NS	NS	NS	NS	NS	NS	NS	32.0
FS-9	05/18/2023	2	<0.050	<0.050	<0.050	<0.150	<0.300	<10.0	<10.0	<10.0	<10.0	256
FS-10	05/18/2023	2	<0.050	<0.050	<0.050	<0.150	<0.300	<10.0	<10.0	<10.0	<10.0	224
FS-11	05/18/2023	2	<0.050	<0.050	<0.050	<0.150	<0.300	<10.0	<10.0	<10.0	<10.0	112
FS-12	05/18/2023	2	<0.050	<0.050	<0.050	<0.150	<0.300	<10.0	53.6	14.4	68.0	416
FS-13	05/18/2023	2	<0.050	<0.050	<0.050	<0.150	<0.300	<10.0	<10.0	<10.0	<10.0	224
FS-14	05/18/2023	2	<0.050	<0.050	<0.050	<0.150	<0.300	<10.0	<10.0	<10.0	<10.0	288
FS-15	05/18/2023	2	<0.050	<0.050	<0.050	<0.150	<0.300	<10.0	<10.0	<10.0	<10.0	176
FS-16	05/18/2023	2	<0.050	<0.050	<0.050	<0.150	<0.300	<10.0	<10.0	<10.0	<10.0	192
FS-17	05/18/2023	2	<0.050	<0.050	<0.050	<0.150	<0.300	<10.0	19.2	<10.0	19.2	288
FS-18	05/18/2023	2	<0.050	<0.050	<0.050	<0.150	<0.300	<10.0	<10.0	<10.0	<10.0	336
FS-19	05/18/2023	2	<0.050	<0.050	<0.050	<0.150	<0.300	<10.0	<10.0	<10.0	<10.0	80.0
FS-20	05/18/2023	2	<0.050	<0.050	<0.050	<0.150	<0.300	<10.0	<10.0	<10.0	<10.0	96.0
Sidewall Sample Analytical Results												
SW-1	05/18/2023	0 - 2	<0.050	<0.050	<0.050	<0.150	<0.300	<10.0	27.0	29.5	56.5	224
SW-2	05/18/2023	0 - 2	<0.050	<0.050	<0.050	<0.150	<0.300	<10.0	15.4	12.6	28.0	48.0
SW-3	05/18/2023	0 - 2	<0.050	<0.050	<0.050	<0.150	<0.300	<10.0	24.9	<10.0	24.9	2,560
	06/16/2023	0 - 2	NS	NS	NS	NS	NS	NS	NS	NS	NS	1,140
	06/28/2023	0 - 2	NS	NS	NS	NS	NS	NS	NS	NS	NS	128
Background Sample Analytical Results												
BG-N	06/28/2023	0 - 0.50	<0.050	<0.050	<0.050	<0.150	<0.300	<10.0	<10.0	<10.0	<10.0	64.0
BG-S	06/28/2023	0 - 0.50	<0.050	<0.050	<0.050	<0.150	<0.300	<10.0	<10.0	<10.0	<10.0	16.0
BG-E	06/28/2023	0 - 0.50	<0.050	<0.050	<0.050	<0.150	<0.300	<10.0	<10.0	<10.0	<10.0	192
BG-W	06/28/2023	0 - 0.50	<0.050	<0.050	<0.050	<0.150	<0.300	<10.0	<10.0	<10.0	<10.0	128

Concentrations in **bold** and yellow exceed the New Mexico Oil Conservation Division Closure Criteria for Soils Impacted by a Release (≤ 50 feet)

Additional Excavation and/or Re-Sample

bgs: below ground surface

mg/kg: milligrams per kilogram

NA: Not Applicable

NE: Not Established

NS: Not Sampled

BTEX: Benzene, Toluene, Ethylbenzene, and Xylenes

GRO: Gasoline Range Organics

DRO: Diesel Range Organics

MRO: Motor Oil/Lube Oil Range Organics

TPH: Total Petroleum Hydrocarbon



APPENDIX E

Laboratory Data Sheets and Chain-of-Custody Documentation



PHONE (575) 393-2326 ° 101 E. MARLAND ° HOBBS, NM 88240

May 23, 2023

BEAUX JENNINGS
ENSOLUM, LLC
705 W WADLEY AVE.
MIDLAND, TX 79705

RE: MESA VERDE BONE SPRINGS 046H

Enclosed are the results of analyses for samples received by the laboratory on 05/18/23 12:41.

Cardinal Laboratories is accredited through Texas NELAP under certificate number T104704398-22-15. Accreditation applies to drinking water, non-potable water and solid and chemical materials. All accredited analytes are denoted by an asterisk (*). For a complete list of accredited analytes and matrices visit the TCEQ website at www.tceq.texas.gov/field/qa/lab_accred_certif.html.

Cardinal Laboratories is accredited through the State of Colorado Department of Public Health and Environment for:

Method EPA 552.2	Haloacetic Acids (HAA-5)
Method EPA 524.2	Total Trihalomethanes (TTHM)
Method EPA 524.4	Regulated VOCs (V1, V2, V3)

Accreditation applies to public drinking water matrices.

This report meets NELAP requirements and is made up of a cover page, analytical results, and a copy of the original chain-of-custody. If you have any questions concerning this report, please feel free to contact me.

Sincerely,

A handwritten signature in black ink that reads "Celey D. Keene". The signature is fluid and cursive, with the first name "Celey" and last name "Keene" clearly distinguishable.

Celey D. Keene
Lab Director/Quality Manager



PHONE (575) 393-2326 ° 101 E. MARLAND ° HOBBS, NM 88240

Analytical Results For:

ENSOLUM, LLC
 BEAUX JENNINGS
 705 W WADLEY AVE.
 MIDLAND TX, 79705
 Fax To:

Received:	05/18/2023	Sampling Date:	05/18/2023
Reported:	05/23/2023	Sampling Type:	Soil
Project Name:	MESA VERDE BONE SPRINGS 046H	Sampling Condition:	Cool & Intact
Project Number:	03B1417064	Sample Received By:	Shalyn Rodriguez
Project Location:	OXY 32.2120,-103.6843		

Sample ID: FS - 1 2' (H232524-01)

BTX 8021B		mg/kg		Analyzed By: JH/					
Analyte	Result	Reporting Limit	Analyzed	Method Blank	BS	% Recovery	True Value QC	RPD	Qualifier
Benzene*	<0.050	0.050	05/20/2023	ND	2.12	106	2.00	1.76	
Toluene*	<0.050	0.050	05/20/2023	ND	2.06	103	2.00	2.69	
Ethylbenzene*	<0.050	0.050	05/20/2023	ND	2.15	107	2.00	0.491	
Total Xylenes*	<0.150	0.150	05/20/2023	ND	6.40	107	6.00	0.584	
Total BTX	<0.300	0.300	05/20/2023	ND					

Surrogate: 4-Bromofluorobenzene (PID) 107 % 71.5-134

Chloride, SM4500Cl-B		mg/kg		Analyzed By: AC						
Analyte	Result	Reporting Limit	Analyzed	Method Blank	BS	% Recovery	True Value QC	RPD	Qualifier	
Chloride	608	16.0	05/19/2023	ND	416	104	400	3.92		

TPH 8015M		mg/kg		Analyzed By: MS					
Analyte	Result	Reporting Limit	Analyzed	Method Blank	BS	% Recovery	True Value QC	RPD	Qualifier
GRO C6-C10*	<10.0	10.0	05/19/2023	ND	178	88.9	200	7.10	
DRO >C10-C28*	<10.0	10.0	05/19/2023	ND	169	84.5	200	4.39	
EXT DRO >C28-C36	<10.0	10.0	05/19/2023	ND					

Surrogate: 1-Chlorooctane 114 % 48.2-134

Surrogate: 1-Chlorooctadecane 107 % 49.1-148

Cardinal Laboratories

*=Accredited Analyte

PLEASE NOTE: Liability and Damages. Cardinal's liability and client's exclusive remedy for any claim arising, whether based in contract or tort, shall be limited to the amount paid by client for analyses. All claims, including those for negligence and any other cause whatsoever shall be deemed waived unless made in writing and received by Cardinal within thirty (30) days after completion of the applicable service. In no event shall Cardinal be liable for incidental or consequential damages, including, without limitation, business interruptions, loss of use, or loss of profits incurred by client, its subsidiaries, affiliates or successors arising out of or related to the performance of the services hereunder by Cardinal, regardless of whether such claim is based upon any of the above stated reasons or otherwise. Results relate only to the samples identified above. This report shall not be reproduced except in full with written approval of Cardinal Laboratories.

Celey D. Keene, Lab Director/Quality Manager



PHONE (575) 393-2326 ° 101 E. MARLAND ° HOBBS, NM 88240

Analytical Results For:

ENSOLUM, LLC
 BEAUX JENNINGS
 705 W WADLEY AVE.
 MIDLAND TX, 79705
 Fax To:

Received:	05/18/2023	Sampling Date:	05/18/2023
Reported:	05/23/2023	Sampling Type:	Soil
Project Name:	MESA VERDE BONE SPRINGS 046H	Sampling Condition:	Cool & Intact
Project Number:	03B1417064	Sample Received By:	Shalyn Rodriguez
Project Location:	OXY 32.2120,-103.6843		

Sample ID: FS - 2 2' (H232524-02)

BTEx 8021B		mg/kg		Analyzed By: JH/						
Analyte	Result	Reporting Limit	Analyzed	Method Blank	BS	% Recovery	True Value QC	RPD	Qualifier	
Benzene*	<0.050	0.050	05/20/2023	ND	2.12	106	2.00	1.76		
Toluene*	<0.050	0.050	05/20/2023	ND	2.06	103	2.00	2.69		
Ethylbenzene*	<0.050	0.050	05/20/2023	ND	2.15	107	2.00	0.491		
Total Xylenes*	<0.150	0.150	05/20/2023	ND	6.40	107	6.00	0.584		
Total BTEX	<0.300	0.300	05/20/2023	ND						

Surrogate: 4-Bromofluorobenzene (PID) 105 % 71.5-134

Chloride, SM4500Cl-B		mg/kg		Analyzed By: AC						
Analyte	Result	Reporting Limit	Analyzed	Method Blank	BS	% Recovery	True Value QC	RPD	Qualifier	
Chloride	272	16.0	05/19/2023	ND	416	104	400	3.92		

TPH 8015M		mg/kg		Analyzed By: MS					
Analyte	Result	Reporting Limit	Analyzed	Method Blank	BS	% Recovery	True Value QC	RPD	Qualifier
GRO C6-C10*	<10.0	10.0	05/19/2023	ND	178	88.9	200	7.10	
DRO >C10-C28*	<10.0	10.0	05/19/2023	ND	169	84.5	200	4.39	
EXT DRO >C28-C36	<10.0	10.0	05/19/2023	ND					

Surrogate: 1-Chlorooctane 123 % 48.2-134

Surrogate: 1-Chlorooctadecane 118 % 49.1-148

Cardinal Laboratories

*=Accredited Analyte

PLEASE NOTE: Liability and Damages. Cardinal's liability and client's exclusive remedy for any claim arising, whether based in contract or tort, shall be limited to the amount paid by client for analyses. All claims, including those for negligence and any other cause whatsoever shall be deemed waived unless made in writing and received by Cardinal within thirty (30) days after completion of the applicable service. In no event shall Cardinal be liable for incidental or consequential damages, including, without limitation, business interruptions, loss of use, or loss of profits incurred by client, its subsidiaries, affiliates or successors arising out of or related to the performance of the services hereunder by Cardinal, regardless of whether such claim is based upon any of the above stated reasons or otherwise. Results relate only to the samples identified above. This report shall not be reproduced except in full with written approval of Cardinal Laboratories.

Celey D. Keene, Lab Director/Quality Manager



PHONE (575) 393-2326 ° 101 E. MARLAND ° HOBBS, NM 88240

Analytical Results For:

ENSOLUM, LLC
 BEAUX JENNINGS
 705 W WADLEY AVE.
 MIDLAND TX, 79705
 Fax To:

Received:	05/18/2023	Sampling Date:	05/18/2023
Reported:	05/23/2023	Sampling Type:	Soil
Project Name:	MESA VERDE BONE SPRINGS 046H	Sampling Condition:	Cool & Intact
Project Number:	03B1417064	Sample Received By:	Shalyn Rodriguez
Project Location:	OXY 32.2120,-103.6843		

Sample ID: FS - 3 2' (H232524-03)

BTEx 8021B		mg/kg		Analyzed By: JH/						
Analyte	Result	Reporting Limit	Analyzed	Method Blank	BS	% Recovery	True Value QC	RPD	Qualifier	
Benzene*	<0.050	0.050	05/21/2023	ND	2.12	106	2.00	1.76		
Toluene*	<0.050	0.050	05/21/2023	ND	2.06	103	2.00	2.69		
Ethylbenzene*	<0.050	0.050	05/21/2023	ND	2.15	107	2.00	0.491		
Total Xylenes*	<0.150	0.150	05/21/2023	ND	6.40	107	6.00	0.584		
Total BTEX	<0.300	0.300	05/21/2023	ND						

Surrogate: 4-Bromofluorobenzene (PID) 108 % 71.5-134

Chloride, SM4500Cl-B		mg/kg		Analyzed By: AC						
Analyte	Result	Reporting Limit	Analyzed	Method Blank	BS	% Recovery	True Value QC	RPD	Qualifier	
Chloride	240	16.0	05/19/2023	ND	416	104	400	3.92		

TPH 8015M		mg/kg		Analyzed By: MS					
Analyte	Result	Reporting Limit	Analyzed	Method Blank	BS	% Recovery	True Value QC	RPD	Qualifier
GRO C6-C10*	<10.0	10.0	05/21/2023	ND	178	88.9	200	7.10	
DRO >C10-C28*	18.4	10.0	05/21/2023	ND	169	84.5	200	4.39	
EXT DRO >C28-C36	17.4	10.0	05/21/2023	ND					

Surrogate: 1-Chlorooctane 107 % 48.2-134

Surrogate: 1-Chlorooctadecane 119 % 49.1-148

Cardinal Laboratories

*=Accredited Analyte

PLEASE NOTE: Liability and Damages. Cardinal's liability and client's exclusive remedy for any claim arising, whether based in contract or tort, shall be limited to the amount paid by client for analyses. All claims, including those for negligence and any other cause whatsoever shall be deemed waived unless made in writing and received by Cardinal within thirty (30) days after completion of the applicable service. In no event shall Cardinal be liable for incidental or consequential damages, including, without limitation, business interruptions, loss of use, or loss of profits incurred by client, its subsidiaries, affiliates or successors arising out of or related to the performance of the services hereunder by Cardinal, regardless of whether such claim is based upon any of the above stated reasons or otherwise. Results relate only to the samples identified above. This report shall not be reproduced except in full with written approval of Cardinal Laboratories.

Celey D. Keene, Lab Director/Quality Manager



PHONE (575) 393-2326 ° 101 E. MARLAND ° HOBBS, NM 88240

Analytical Results For:

ENSOLUM, LLC
 BEAUX JENNINGS
 705 W WADLEY AVE.
 MIDLAND TX, 79705
 Fax To:

Received:	05/18/2023	Sampling Date:	05/18/2023
Reported:	05/23/2023	Sampling Type:	Soil
Project Name:	MESA VERDE BONE SPRINGS 046H	Sampling Condition:	Cool & Intact
Project Number:	03B1417064	Sample Received By:	Shalyn Rodriguez
Project Location:	OXY 32.2120,-103.6843		

Sample ID: FS - 4 2' (H232524-04)

BTEx 8021B		mg/kg		Analyzed By: JH/						
Analyte	Result	Reporting Limit	Analyzed	Method Blank	BS	% Recovery	True Value QC	RPD	Qualifier	
Benzene*	<0.050	0.050	05/21/2023	ND	2.12	106	2.00	1.76		
Toluene*	<0.050	0.050	05/21/2023	ND	2.06	103	2.00	2.69		
Ethylbenzene*	<0.050	0.050	05/21/2023	ND	2.15	107	2.00	0.491		
Total Xylenes*	<0.150	0.150	05/21/2023	ND	6.40	107	6.00	0.584		
Total BTEx	<0.300	0.300	05/21/2023	ND						

Surrogate: 4-Bromofluorobenzene (PID) 108 % 71.5-134

Chloride, SM4500CI-B		mg/kg		Analyzed By: AC						
Analyte	Result	Reporting Limit	Analyzed	Method Blank	BS	% Recovery	True Value QC	RPD	Qualifier	
Chloride	240	16.0	05/19/2023	ND	416	104	400	3.92		

TPH 8015M		mg/kg		Analyzed By: MS					
Analyte	Result	Reporting Limit	Analyzed	Method Blank	BS	% Recovery	True Value QC	RPD	Qualifier
GRO C6-C10*	<10.0	10.0	05/19/2023	ND	178	88.9	200	7.10	
DRO >C10-C28*	<10.0	10.0	05/19/2023	ND	169	84.5	200	4.39	
EXT DRO >C28-C36	<10.0	10.0	05/19/2023	ND					

Surrogate: 1-Chlorooctane 126 % 48.2-134

Surrogate: 1-Chlorooctadecane 121 % 49.1-148

Cardinal Laboratories

*=Accredited Analyte

PLEASE NOTE: Liability and Damages. Cardinal's liability and client's exclusive remedy for any claim arising, whether based in contract or tort, shall be limited to the amount paid by client for analyses. All claims, including those for negligence and any other cause whatsoever shall be deemed waived unless made in writing and received by Cardinal within thirty (30) days after completion of the applicable service. In no event shall Cardinal be liable for incidental or consequential damages, including, without limitation, business interruptions, loss of use, or loss of profits incurred by client, its subsidiaries, affiliates or successors arising out of or related to the performance of the services hereunder by Cardinal, regardless of whether such claim is based upon any of the above stated reasons or otherwise. Results relate only to the samples identified above. This report shall not be reproduced except in full with written approval of Cardinal Laboratories.

Celey D. Keene, Lab Director/Quality Manager



PHONE (575) 393-2326 ° 101 E. MARLAND ° HOBBS, NM 88240

Analytical Results For:

ENSOLUM, LLC
 BEAUX JENNINGS
 705 W WADLEY AVE.
 MIDLAND TX, 79705
 Fax To:

Received:	05/18/2023	Sampling Date:	05/18/2023
Reported:	05/23/2023	Sampling Type:	Soil
Project Name:	MESA VERDE BONE SPRINGS 046H	Sampling Condition:	Cool & Intact
Project Number:	03B1417064	Sample Received By:	Shalyn Rodriguez
Project Location:	OXY 32.2120,-103.6843		

Sample ID: FS - 5 2' (H232524-05)

BTEx 8021B		mg/kg		Analyzed By: JH/						
Analyte	Result	Reporting Limit	Analyzed	Method Blank	BS	% Recovery	True Value QC	RPD	Qualifier	
Benzene*	<0.050	0.050	05/21/2023	ND	2.12	106	2.00	1.76		
Toluene*	<0.050	0.050	05/21/2023	ND	2.06	103	2.00	2.69		
Ethylbenzene*	<0.050	0.050	05/21/2023	ND	2.15	107	2.00	0.491		
Total Xylenes*	<0.150	0.150	05/21/2023	ND	6.40	107	6.00	0.584		
Total BTEx	<0.300	0.300	05/21/2023	ND						

Surrogate: 4-Bromofluorobenzene (PID) 107 % 71.5-134

Chloride, SM4500CI-B		mg/kg		Analyzed By: AC						
Analyte	Result	Reporting Limit	Analyzed	Method Blank	BS	% Recovery	True Value QC	RPD	Qualifier	
Chloride	64.0	16.0	05/19/2023	ND	416	104	400	3.77		

TPH 8015M		mg/kg		Analyzed By: MS					
Analyte	Result	Reporting Limit	Analyzed	Method Blank	BS	% Recovery	True Value QC	RPD	Qualifier
GRO C6-C10*	<10.0	10.0	05/19/2023	ND	178	88.9	200	7.10	
DRO >C10-C28*	<10.0	10.0	05/19/2023	ND	169	84.5	200	4.39	
EXT DRO >C28-C36	<10.0	10.0	05/19/2023	ND					

Surrogate: 1-Chlorooctane 122 % 48.2-134

Surrogate: 1-Chlorooctadecane 116 % 49.1-148

Cardinal Laboratories

*=Accredited Analyte

PLEASE NOTE: Liability and Damages. Cardinal's liability and client's exclusive remedy for any claim arising, whether based in contract or tort, shall be limited to the amount paid by client for analyses. All claims, including those for negligence and any other cause whatsoever shall be deemed waived unless made in writing and received by Cardinal within thirty (30) days after completion of the applicable service. In no event shall Cardinal be liable for incidental or consequential damages, including, without limitation, business interruptions, loss of use, or loss of profits incurred by client, its subsidiaries, affiliates or successors arising out of or related to the performance of the services hereunder by Cardinal, regardless of whether such claim is based upon any of the above stated reasons or otherwise. Results relate only to the samples identified above. This report shall not be reproduced except in full with written approval of Cardinal Laboratories.

Celey D. Keene, Lab Director/Quality Manager



PHONE (575) 393-2326 ° 101 E. MARLAND ° HOBBS, NM 88240

Analytical Results For:

ENSOLUM, LLC
 BEAUX JENNINGS
 705 W WADLEY AVE.
 MIDLAND TX, 79705
 Fax To:

Received:	05/18/2023	Sampling Date:	05/18/2023
Reported:	05/23/2023	Sampling Type:	Soil
Project Name:	MESA VERDE BONE SPRINGS 046H	Sampling Condition:	Cool & Intact
Project Number:	03B1417064	Sample Received By:	Shalyn Rodriguez
Project Location:	OXY 32.2120,-103.6843		

Sample ID: FS - 6 2' (H232524-06)

BTEx 8021B		mg/kg		Analyzed By: JH/						
Analyte	Result	Reporting Limit	Analyzed	Method Blank	BS	% Recovery	True Value QC	RPD	Qualifier	
Benzene*	<0.050	0.050	05/21/2023	ND	2.12	106	2.00	1.76		
Toluene*	<0.050	0.050	05/21/2023	ND	2.06	103	2.00	2.69		
Ethylbenzene*	<0.050	0.050	05/21/2023	ND	2.15	107	2.00	0.491		
Total Xylenes*	<0.150	0.150	05/21/2023	ND	6.40	107	6.00	0.584		
Total BTEx	<0.300	0.300	05/21/2023	ND						

Surrogate: 4-Bromofluorobenzene (PID) 107 % 71.5-134

Chloride, SM4500CI-B		mg/kg		Analyzed By: AC						
Analyte	Result	Reporting Limit	Analyzed	Method Blank	BS	% Recovery	True Value QC	RPD	Qualifier	
Chloride	400	16.0	05/19/2023	ND	416	104	400	3.77		

TPH 8015M		mg/kg		Analyzed By: MS					
Analyte	Result	Reporting Limit	Analyzed	Method Blank	BS	% Recovery	True Value QC	RPD	Qualifier
GRO C6-C10*	<10.0	10.0	05/19/2023	ND	178	88.9	200	7.10	
DRO >C10-C28*	33.1	10.0	05/19/2023	ND	169	84.5	200	4.39	
EXT DRO >C28-C36	<10.0	10.0	05/19/2023	ND					

Surrogate: 1-Chlorooctane 131 % 48.2-134

Surrogate: 1-Chlorooctadecane 123 % 49.1-148

Cardinal Laboratories

*=Accredited Analyte

PLEASE NOTE: Liability and Damages. Cardinal's liability and client's exclusive remedy for any claim arising, whether based in contract or tort, shall be limited to the amount paid by client for analyses. All claims, including those for negligence and any other cause whatsoever shall be deemed waived unless made in writing and received by Cardinal within thirty (30) days after completion of the applicable service. In no event shall Cardinal be liable for incidental or consequential damages, including, without limitation, business interruptions, loss of use, or loss of profits incurred by client, its subsidiaries, affiliates or successors arising out of or related to the performance of the services hereunder by Cardinal, regardless of whether such claim is based upon any of the above stated reasons or otherwise. Results relate only to the samples identified above. This report shall not be reproduced except in full with written approval of Cardinal Laboratories.

Celey D. Keene, Lab Director/Quality Manager



PHONE (575) 393-2326 ° 101 E. MARLAND ° HOBBS, NM 88240

Analytical Results For:

ENSOLUM, LLC
 BEAUX JENNINGS
 705 W WADLEY AVE.
 MIDLAND TX, 79705
 Fax To:

Received:	05/18/2023	Sampling Date:	05/18/2023
Reported:	05/23/2023	Sampling Type:	Soil
Project Name:	MESA VERDE BONE SPRINGS 046H	Sampling Condition:	Cool & Intact
Project Number:	03B1417064	Sample Received By:	Shalyn Rodriguez
Project Location:	OXY 32.2120,-103.6843		

Sample ID: FS - 7 2' (H232524-07)

BTEx 8021B		mg/kg		Analyzed By: JH/						
Analyte	Result	Reporting Limit	Analyzed	Method Blank	BS	% Recovery	True Value QC	RPD	Qualifier	
Benzene*	<0.050	0.050	05/21/2023	ND	2.12	106	2.00	1.76		
Toluene*	<0.050	0.050	05/21/2023	ND	2.06	103	2.00	2.69		
Ethylbenzene*	<0.050	0.050	05/21/2023	ND	2.15	107	2.00	0.491		
Total Xylenes*	<0.150	0.150	05/21/2023	ND	6.40	107	6.00	0.584		
Total BTEX	<0.300	0.300	05/21/2023	ND						

Surrogate: 4-Bromofluorobenzene (PID) 106 % 71.5-134

Chloride, SM4500CI-B		mg/kg		Analyzed By: AC						
Analyte	Result	Reporting Limit	Analyzed	Method Blank	BS	% Recovery	True Value QC	RPD	Qualifier	
Chloride	3120	16.0	05/19/2023	ND	416	104	400	3.77		

TPH 8015M		mg/kg		Analyzed By: MS					
Analyte	Result	Reporting Limit	Analyzed	Method Blank	BS	% Recovery	True Value QC	RPD	Qualifier
GRO C6-C10*	<10.0	10.0	05/19/2023	ND	178	88.9	200	7.10	
DRO >C10-C28*	<10.0	10.0	05/19/2023	ND	169	84.5	200	4.39	
EXT DRO >C28-C36	<10.0	10.0	05/19/2023	ND					

Surrogate: 1-Chlorooctane 134 % 48.2-134

Surrogate: 1-Chlorooctadecane 130 % 49.1-148

Cardinal Laboratories

*=Accredited Analyte

PLEASE NOTE: Liability and Damages. Cardinal's liability and client's exclusive remedy for any claim arising, whether based in contract or tort, shall be limited to the amount paid by client for analyses. All claims, including those for negligence and any other cause whatsoever shall be deemed waived unless made in writing and received by Cardinal within thirty (30) days after completion of the applicable service. In no event shall Cardinal be liable for incidental or consequential damages, including, without limitation, business interruptions, loss of use, or loss of profits incurred by client, its subsidiaries, affiliates or successors arising out of or related to the performance of the services hereunder by Cardinal, regardless of whether such claim is based upon any of the above stated reasons or otherwise. Results relate only to the samples identified above. This report shall not be reproduced except in full with written approval of Cardinal Laboratories.

Celey D. Keene, Lab Director/Quality Manager



PHONE (575) 393-2326 ° 101 E. MARLAND ° HOBBS, NM 88240

Analytical Results For:

ENSOLUM, LLC
 BEAUX JENNINGS
 705 W WADLEY AVE.
 MIDLAND TX, 79705
 Fax To:

Received:	05/18/2023	Sampling Date:	05/18/2023
Reported:	05/23/2023	Sampling Type:	Soil
Project Name:	MESA VERDE BONE SPRINGS 046H	Sampling Condition:	Cool & Intact
Project Number:	03B1417064	Sample Received By:	Shalyn Rodriguez
Project Location:	OXY 32.2120,-103.6843		

Sample ID: FS - 8 2' (H232524-08)

BTEx 8021B		mg/kg		Analyzed By: JH/						
Analyte	Result	Reporting Limit	Analyzed	Method Blank	BS	% Recovery	True Value QC	RPD	Qualifier	
Benzene*	<0.050	0.050	05/21/2023	ND	2.12	106	2.00	1.76		
Toluene*	<0.050	0.050	05/21/2023	ND	2.06	103	2.00	2.69		
Ethylbenzene*	<0.050	0.050	05/21/2023	ND	2.15	107	2.00	0.491		
Total Xylenes*	<0.150	0.150	05/21/2023	ND	6.40	107	6.00	0.584		
Total BTEx	<0.300	0.300	05/21/2023	ND						

Surrogate: 4-Bromofluorobenzene (PID) 107 % 71.5-134

Chloride, SM4500CI-B		mg/kg		Analyzed By: AC						
Analyte	Result	Reporting Limit	Analyzed	Method Blank	BS	% Recovery	True Value QC	RPD	Qualifier	
Chloride	1410	16.0	05/19/2023	ND	416	104	400	3.77		

TPH 8015M		mg/kg		Analyzed By: MS					
Analyte	Result	Reporting Limit	Analyzed	Method Blank	BS	% Recovery	True Value QC	RPD	Qualifier
GRO C6-C10*	<10.0	10.0	05/21/2023	ND	178	88.9	200	7.10	
DRO >C10-C28*	<10.0	10.0	05/21/2023	ND	169	84.5	200	4.39	
EXT DRO >C28-C36	<10.0	10.0	05/21/2023	ND					

Surrogate: 1-Chlorooctane 129 % 48.2-134

Surrogate: 1-Chlorooctadecane 142 % 49.1-148

Cardinal Laboratories

*=Accredited Analyte

PLEASE NOTE: Liability and Damages. Cardinal's liability and client's exclusive remedy for any claim arising, whether based in contract or tort, shall be limited to the amount paid by client for analyses. All claims, including those for negligence and any other cause whatsoever shall be deemed waived unless made in writing and received by Cardinal within thirty (30) days after completion of the applicable service. In no event shall Cardinal be liable for incidental or consequential damages, including, without limitation, business interruptions, loss of use, or loss of profits incurred by client, its subsidiaries, affiliates or successors arising out of or related to the performance of the services hereunder by Cardinal, regardless of whether such claim is based upon any of the above stated reasons or otherwise. Results relate only to the samples identified above. This report shall not be reproduced except in full with written approval of Cardinal Laboratories.

Celey D. Keene, Lab Director/Quality Manager



PHONE (575) 393-2326 ° 101 E. MARLAND ° HOBBS, NM 88240

Analytical Results For:

ENSOLUM, LLC
 BEAUX JENNINGS
 705 W WADLEY AVE.
 MIDLAND TX, 79705
 Fax To:

Received:	05/18/2023	Sampling Date:	05/18/2023
Reported:	05/23/2023	Sampling Type:	Soil
Project Name:	MESA VERDE BONE SPRINGS 046H	Sampling Condition:	Cool & Intact
Project Number:	03B1417064	Sample Received By:	Shalyn Rodriguez
Project Location:	OXY 32.2120,-103.6843		

Sample ID: FS - 9 2' (H232524-09)

BTEx 8021B		mg/kg		Analyzed By: JH/						
Analyte	Result	Reporting Limit	Analyzed	Method Blank	BS	% Recovery	True Value QC	RPD	Qualifier	
Benzene*	<0.050	0.050	05/21/2023	ND	2.12	106	2.00	1.76		
Toluene*	<0.050	0.050	05/21/2023	ND	2.06	103	2.00	2.69		
Ethylbenzene*	<0.050	0.050	05/21/2023	ND	2.15	107	2.00	0.491		
Total Xylenes*	<0.150	0.150	05/21/2023	ND	6.40	107	6.00	0.584		
Total BTEX	<0.300	0.300	05/21/2023	ND						

Surrogate: 4-Bromofluorobenzene (PID) 106 % 71.5-134

Chloride, SM4500Cl-B		mg/kg		Analyzed By: AC						
Analyte	Result	Reporting Limit	Analyzed	Method Blank	BS	% Recovery	True Value QC	RPD	Qualifier	
Chloride	256	16.0	05/19/2023	ND	416	104	400	3.77		

TPH 8015M		mg/kg		Analyzed By: MS					
Analyte	Result	Reporting Limit	Analyzed	Method Blank	BS	% Recovery	True Value QC	RPD	Qualifier
GRO C6-C10*	<10.0	10.0	05/19/2023	ND	178	88.9	200	7.10	
DRO >C10-C28*	<10.0	10.0	05/19/2023	ND	169	84.5	200	4.39	
EXT DRO >C28-C36	<10.0	10.0	05/19/2023	ND					

Surrogate: 1-Chlorooctane 127 % 48.2-134

Surrogate: 1-Chlorooctadecane 124 % 49.1-148

Cardinal Laboratories

*=Accredited Analyte

PLEASE NOTE: Liability and Damages. Cardinal's liability and client's exclusive remedy for any claim arising, whether based in contract or tort, shall be limited to the amount paid by client for analyses. All claims, including those for negligence and any other cause whatsoever shall be deemed waived unless made in writing and received by Cardinal within thirty (30) days after completion of the applicable service. In no event shall Cardinal be liable for incidental or consequential damages, including, without limitation, business interruptions, loss of use, or loss of profits incurred by client, its subsidiaries, affiliates or successors arising out of or related to the performance of the services hereunder by Cardinal, regardless of whether such claim is based upon any of the above stated reasons or otherwise. Results relate only to the samples identified above. This report shall not be reproduced except in full with written approval of Cardinal Laboratories.

Celey D. Keene, Lab Director/Quality Manager



PHONE (575) 393-2326 ° 101 E. MARLAND ° HOBBS, NM 88240

Analytical Results For:

ENSOLUM, LLC
 BEAUX JENNINGS
 705 W WADLEY AVE.
 MIDLAND TX, 79705
 Fax To:

Received:	05/18/2023	Sampling Date:	05/18/2023
Reported:	05/23/2023	Sampling Type:	Soil
Project Name:	MESA VERDE BONE SPRINGS 046H	Sampling Condition:	Cool & Intact
Project Number:	03B1417064	Sample Received By:	Shalyn Rodriguez
Project Location:	OXY 32.2120,-103.6843		

Sample ID: FS - 10 2' (H232524-10)

BTEx 8021B		mg/kg		Analyzed By: JH/						
Analyte	Result	Reporting Limit	Analyzed	Method Blank	BS	% Recovery	True Value QC	RPD	Qualifier	
Benzene*	<0.050	0.050	05/21/2023	ND	2.12	106	2.00	1.76		
Toluene*	<0.050	0.050	05/21/2023	ND	2.06	103	2.00	2.69		
Ethylbenzene*	<0.050	0.050	05/21/2023	ND	2.15	107	2.00	0.491		
Total Xylenes*	<0.150	0.150	05/21/2023	ND	6.40	107	6.00	0.584		
Total BTEx	<0.300	0.300	05/21/2023	ND						

Surrogate: 4-Bromofluorobenzene (PID) 108 % 71.5-134

Chloride, SM4500CI-B		mg/kg		Analyzed By: AC						
Analyte	Result	Reporting Limit	Analyzed	Method Blank	BS	% Recovery	True Value QC	RPD	Qualifier	
Chloride	224	16.0	05/19/2023	ND	416	104	400	3.77		

TPH 8015M		mg/kg		Analyzed By: MS					
Analyte	Result	Reporting Limit	Analyzed	Method Blank	BS	% Recovery	True Value QC	RPD	Qualifier
GRO C6-C10*	<10.0	10.0	05/19/2023	ND	178	88.9	200	7.10	
DRO >C10-C28*	<10.0	10.0	05/19/2023	ND	169	84.5	200	4.39	
EXT DRO >C28-C36	<10.0	10.0	05/19/2023	ND					

Surrogate: 1-Chlorooctane 123 % 48.2-134

Surrogate: 1-Chlorooctadecane 118 % 49.1-148

Cardinal Laboratories

*=Accredited Analyte

PLEASE NOTE: Liability and Damages. Cardinal's liability and client's exclusive remedy for any claim arising, whether based in contract or tort, shall be limited to the amount paid by client for analyses. All claims, including those for negligence and any other cause whatsoever shall be deemed waived unless made in writing and received by Cardinal within thirty (30) days after completion of the applicable service. In no event shall Cardinal be liable for incidental or consequential damages, including, without limitation, business interruptions, loss of use, or loss of profits incurred by client, its subsidiaries, affiliates or successors arising out of or related to the performance of the services hereunder by Cardinal, regardless of whether such claim is based upon any of the above stated reasons or otherwise. Results relate only to the samples identified above. This report shall not be reproduced except in full with written approval of Cardinal Laboratories.

Celey D. Keene, Lab Director/Quality Manager



PHONE (575) 393-2326 ° 101 E. MARLAND ° HOBBS, NM 88240

Analytical Results For:

ENSOLUM, LLC
 BEAUX JENNINGS
 705 W WADLEY AVE.
 MIDLAND TX, 79705
 Fax To:

Received:	05/18/2023	Sampling Date:	05/18/2023
Reported:	05/23/2023	Sampling Type:	Soil
Project Name:	MESA VERDE BONE SPRINGS 046H	Sampling Condition:	Cool & Intact
Project Number:	03B1417064	Sample Received By:	Shalyn Rodriguez
Project Location:	OXY 32.2120,-103.6843		

Sample ID: FS - 11 2' (H232524-11)

BTEx 8021B		mg/kg		Analyzed By: JH/						
Analyte	Result	Reporting Limit	Analyzed	Method Blank	BS	% Recovery	True Value QC	RPD	Qualifier	
Benzene*	<0.050	0.050	05/21/2023	ND	2.12	106	2.00	1.76		
Toluene*	<0.050	0.050	05/21/2023	ND	2.06	103	2.00	2.69		
Ethylbenzene*	<0.050	0.050	05/21/2023	ND	2.15	107	2.00	0.491		
Total Xylenes*	<0.150	0.150	05/21/2023	ND	6.40	107	6.00	0.584		
Total BTEx	<0.300	0.300	05/21/2023	ND						

Surrogate: 4-Bromofluorobenzene (PID) 105 % 71.5-134

Chloride, SM4500CI-B		mg/kg		Analyzed By: AC						
Analyte	Result	Reporting Limit	Analyzed	Method Blank	BS	% Recovery	True Value QC	RPD	Qualifier	
Chloride	112	16.0	05/19/2023	ND	416	104	400	3.77		

TPH 8015M		mg/kg		Analyzed By: MS					
Analyte	Result	Reporting Limit	Analyzed	Method Blank	BS	% Recovery	True Value QC	RPD	Qualifier
GRO C6-C10*	<10.0	10.0	05/19/2023	ND	178	88.9	200	7.10	
DRO >C10-C28*	<10.0	10.0	05/19/2023	ND	169	84.5	200	4.39	
EXT DRO >C28-C36	<10.0	10.0	05/19/2023	ND					

Surrogate: 1-Chlorooctane 129 % 48.2-134

Surrogate: 1-Chlorooctadecane 124 % 49.1-148

Cardinal Laboratories

*=Accredited Analyte

PLEASE NOTE: Liability and Damages. Cardinal's liability and client's exclusive remedy for any claim arising, whether based in contract or tort, shall be limited to the amount paid by client for analyses. All claims, including those for negligence and any other cause whatsoever shall be deemed waived unless made in writing and received by Cardinal within thirty (30) days after completion of the applicable service. In no event shall Cardinal be liable for incidental or consequential damages, including, without limitation, business interruptions, loss of use, or loss of profits incurred by client, its subsidiaries, affiliates or successors arising out of or related to the performance of the services hereunder by Cardinal, regardless of whether such claim is based upon any of the above stated reasons or otherwise. Results relate only to the samples identified above. This report shall not be reproduced except in full with written approval of Cardinal Laboratories.

Celey D. Keene, Lab Director/Quality Manager



PHONE (575) 393-2326 ° 101 E. MARLAND ° HOBBS, NM 88240

Analytical Results For:

ENSOLUM, LLC
 BEAUX JENNINGS
 705 W WADLEY AVE.
 MIDLAND TX, 79705
 Fax To:

Received:	05/18/2023	Sampling Date:	05/18/2023
Reported:	05/23/2023	Sampling Type:	Soil
Project Name:	MESA VERDE BONE SPRINGS 046H	Sampling Condition:	Cool & Intact
Project Number:	03B1417064	Sample Received By:	Shalyn Rodriguez
Project Location:	OXY 32.2120,-103.6843		

Sample ID: FS - 12 2' (H232524-12)

BTEX 8021B		mg/kg		Analyzed By: JH/						
Analyte	Result	Reporting Limit	Analyzed	Method Blank	BS	% Recovery	True Value QC	RPD	Qualifier	
Benzene*	<0.050	0.050	05/21/2023	ND	2.12	106	2.00	1.76		
Toluene*	<0.050	0.050	05/21/2023	ND	2.06	103	2.00	2.69		
Ethylbenzene*	<0.050	0.050	05/21/2023	ND	2.15	107	2.00	0.491		
Total Xylenes*	<0.150	0.150	05/21/2023	ND	6.40	107	6.00	0.584		
Total BTEX	<0.300	0.300	05/21/2023	ND						

Surrogate: 4-Bromofluorobenzene (PID) 109 % 71.5-134

Chloride, SM4500Cl-B		mg/kg		Analyzed By: AC						
Analyte	Result	Reporting Limit	Analyzed	Method Blank	BS	% Recovery	True Value QC	RPD	Qualifier	
Chloride	416	16.0	05/19/2023	ND	416	104	400	3.77		

TPH 8015M		mg/kg		Analyzed By: MS					
Analyte	Result	Reporting Limit	Analyzed	Method Blank	BS	% Recovery	True Value QC	RPD	Qualifier
GRO C6-C10*	<10.0	10.0	05/19/2023	ND	178	88.9	200	7.10	
DRO >C10-C28*	53.6	10.0	05/19/2023	ND	169	84.5	200	4.39	
EXT DRO >C28-C36	14.4	10.0	05/19/2023	ND					

Surrogate: 1-Chlorooctane 127 % 48.2-134

Surrogate: 1-Chlorooctadecane 118 % 49.1-148

Cardinal Laboratories

*=Accredited Analyte

PLEASE NOTE: Liability and Damages. Cardinal's liability and client's exclusive remedy for any claim arising, whether based in contract or tort, shall be limited to the amount paid by client for analyses. All claims, including those for negligence and any other cause whatsoever shall be deemed waived unless made in writing and received by Cardinal within thirty (30) days after completion of the applicable service. In no event shall Cardinal be liable for incidental or consequential damages, including, without limitation, business interruptions, loss of use, or loss of profits incurred by client, its subsidiaries, affiliates or successors arising out of or related to the performance of the services hereunder by Cardinal, regardless of whether such claim is based upon any of the above stated reasons or otherwise. Results relate only to the samples identified above. This report shall not be reproduced except in full with written approval of Cardinal Laboratories.

Celey D. Keene, Lab Director/Quality Manager



PHONE (575) 393-2326 ° 101 E. MARLAND ° HOBBS, NM 88240

Analytical Results For:

ENSOLUM, LLC
BEAUX JENNINGS
705 W WADLEY AVE.
MIDLAND TX, 79705
Fax To:

Received:	05/18/2023	Sampling Date:	05/18/2023
Reported:	05/23/2023	Sampling Type:	Soil
Project Name:	MESA VERDE BONE SPRINGS 046H	Sampling Condition:	Cool & Intact
Project Number:	03B1417064	Sample Received By:	Shalyn Rodriguez
Project Location:	OXY 32.2120,-103.6843		

Sample ID: FS - 13 2' (H232524-13)

BTEx 8021B		mg/kg		Analyzed By: JH/						
Analyte	Result	Reporting Limit	Analyzed	Method Blank	BS	% Recovery	True Value QC	RPD	Qualifier	
Benzene*	<0.050	0.050	05/21/2023	ND	2.12	106	2.00	1.76		
Toluene*	<0.050	0.050	05/21/2023	ND	2.06	103	2.00	2.69		
Ethylbenzene*	<0.050	0.050	05/21/2023	ND	2.15	107	2.00	0.491		
Total Xylenes*	<0.150	0.150	05/21/2023	ND	6.40	107	6.00	0.584		
Total BTEx	<0.300	0.300	05/21/2023	ND						

Surrogate: 4-Bromofluorobenzene (PID) 107 % 71.5-134

Chloride, SM4500CI-B		mg/kg		Analyzed By: AC						
Analyte	Result	Reporting Limit	Analyzed	Method Blank	BS	% Recovery	True Value QC	RPD	Qualifier	
Chloride	224	16.0	05/19/2023	ND	416	104	400	3.77		

TPH 8015M		mg/kg		Analyzed By: MS					
Analyte	Result	Reporting Limit	Analyzed	Method Blank	BS	% Recovery	True Value QC	RPD	Qualifier
GRO C6-C10*	<10.0	10.0	05/19/2023	ND	178	88.9	200	7.10	
DRO >C10-C28*	<10.0	10.0	05/19/2023	ND	169	84.5	200	4.39	
EXT DRO >C28-C36	<10.0	10.0	05/19/2023	ND					

Surrogate: 1-Chlorooctane 129 % 48.2-134

Surrogate: 1-Chlorooctadecane 122 % 49.1-148

Cardinal Laboratories

*=Accredited Analyte

PLEASE NOTE: Liability and Damages. Cardinal's liability and client's exclusive remedy for any claim arising, whether based in contract or tort, shall be limited to the amount paid by client for analyses. All claims, including those for negligence and any other cause whatsoever shall be deemed waived unless made in writing and received by Cardinal within thirty (30) days after completion of the applicable service. In no event shall Cardinal be liable for incidental or consequential damages, including, without limitation, business interruptions, loss of use, or loss of profits incurred by client, its subsidiaries, affiliates or successors arising out of or related to the performance of the services hereunder by Cardinal, regardless of whether such claim is based upon any of the above stated reasons or otherwise. Results relate only to the samples identified above. This report shall not be reproduced except in full with written approval of Cardinal Laboratories.

Celey D. Keene, Lab Director/Quality Manager



PHONE (575) 393-2326 ° 101 E. MARLAND ° HOBBS, NM 88240

Analytical Results For:

ENSOLUM, LLC
 BEAUX JENNINGS
 705 W WADLEY AVE.
 MIDLAND TX, 79705
 Fax To:

Received:	05/18/2023	Sampling Date:	05/18/2023
Reported:	05/23/2023	Sampling Type:	Soil
Project Name:	MESA VERDE BONE SPRINGS 046H	Sampling Condition:	Cool & Intact
Project Number:	03B1417064	Sample Received By:	Shalyn Rodriguez
Project Location:	OXY 32.2120,-103.6843		

Sample ID: FS - 14 2' (H232524-14)

BTEx 8021B		mg/kg		Analyzed By: JH/						
Analyte	Result	Reporting Limit	Analyzed	Method Blank	BS	% Recovery	True Value QC	RPD	Qualifier	
Benzene*	<0.050	0.050	05/21/2023	ND	2.12	106	2.00	1.76		
Toluene*	<0.050	0.050	05/21/2023	ND	2.06	103	2.00	2.69		
Ethylbenzene*	<0.050	0.050	05/21/2023	ND	2.15	107	2.00	0.491		
Total Xylenes*	<0.150	0.150	05/21/2023	ND	6.40	107	6.00	0.584		
Total BTEx	<0.300	0.300	05/21/2023	ND						

Surrogate: 4-Bromofluorobenzene (PID) 108 % 71.5-134

Chloride, SM4500CI-B		mg/kg		Analyzed By: AC						
Analyte	Result	Reporting Limit	Analyzed	Method Blank	BS	% Recovery	True Value QC	RPD	Qualifier	
Chloride	288	16.0	05/19/2023	ND	416	104	400	3.77		

TPH 8015M		mg/kg		Analyzed By: MS					
Analyte	Result	Reporting Limit	Analyzed	Method Blank	BS	% Recovery	True Value QC	RPD	Qualifier
GRO C6-C10*	<10.0	10.0	05/19/2023	ND	178	88.9	200	7.10	
DRO >C10-C28*	<10.0	10.0	05/19/2023	ND	169	84.5	200	4.39	
EXT DRO >C28-C36	<10.0	10.0	05/19/2023	ND					

Surrogate: 1-Chlorooctane 131 % 48.2-134

Surrogate: 1-Chlorooctadecane 125 % 49.1-148

Cardinal Laboratories

*=Accredited Analyte

PLEASE NOTE: Liability and Damages. Cardinal's liability and client's exclusive remedy for any claim arising, whether based in contract or tort, shall be limited to the amount paid by client for analyses. All claims, including those for negligence and any other cause whatsoever shall be deemed waived unless made in writing and received by Cardinal within thirty (30) days after completion of the applicable service. In no event shall Cardinal be liable for incidental or consequential damages, including, without limitation, business interruptions, loss of use, or loss of profits incurred by client, its subsidiaries, affiliates or successors arising out of or related to the performance of the services hereunder by Cardinal, regardless of whether such claim is based upon any of the above stated reasons or otherwise. Results relate only to the samples identified above. This report shall not be reproduced except in full with written approval of Cardinal Laboratories.

Celey D. Keene, Lab Director/Quality Manager



PHONE (575) 393-2326 ° 101 E. MARLAND ° HOBBS, NM 88240

Analytical Results For:

ENSOLUM, LLC
 BEAUX JENNINGS
 705 W WADLEY AVE.
 MIDLAND TX, 79705
 Fax To:

Received:	05/18/2023	Sampling Date:	05/18/2023
Reported:	05/23/2023	Sampling Type:	Soil
Project Name:	MESA VERDE BONE SPRINGS 046H	Sampling Condition:	Cool & Intact
Project Number:	03B1417064	Sample Received By:	Shalyn Rodriguez
Project Location:	OXY 32.2120,-103.6843		

Sample ID: FS - 15 2' (H232524-15)

BTEx 8021B		mg/kg		Analyzed By: JH/						
Analyte	Result	Reporting Limit	Analyzed	Method Blank	BS	% Recovery	True Value QC	RPD	Qualifier	
Benzene*	<0.050	0.050	05/21/2023	ND	2.12	106	2.00	1.76		
Toluene*	<0.050	0.050	05/21/2023	ND	2.06	103	2.00	2.69		
Ethylbenzene*	<0.050	0.050	05/21/2023	ND	2.15	107	2.00	0.491		
Total Xylenes*	<0.150	0.150	05/21/2023	ND	6.40	107	6.00	0.584		
Total BTEX	<0.300	0.300	05/21/2023	ND						

Surrogate: 4-Bromofluorobenzene (PID) 107 % 71.5-134

Chloride, SM4500Cl-B		mg/kg		Analyzed By: AC						
Analyte	Result	Reporting Limit	Analyzed	Method Blank	BS	% Recovery	True Value QC	RPD	Qualifier	
Chloride	176	16.0	05/19/2023	ND	416	104	400	3.77		

TPH 8015M		mg/kg		Analyzed By: MS					
Analyte	Result	Reporting Limit	Analyzed	Method Blank	BS	% Recovery	True Value QC	RPD	Qualifier
GRO C6-C10*	<10.0	10.0	05/19/2023	ND	178	88.9	200	7.10	
DRO >C10-C28*	<10.0	10.0	05/19/2023	ND	169	84.5	200	4.39	
EXT DRO >C28-C36	<10.0	10.0	05/19/2023	ND					

Surrogate: 1-Chlorooctane 127 % 48.2-134

Surrogate: 1-Chlorooctadecane 123 % 49.1-148

Cardinal Laboratories

*=Accredited Analyte

PLEASE NOTE: Liability and Damages. Cardinal's liability and client's exclusive remedy for any claim arising, whether based in contract or tort, shall be limited to the amount paid by client for analyses. All claims, including those for negligence and any other cause whatsoever shall be deemed waived unless made in writing and received by Cardinal within thirty (30) days after completion of the applicable service. In no event shall Cardinal be liable for incidental or consequential damages, including, without limitation, business interruptions, loss of use, or loss of profits incurred by client, its subsidiaries, affiliates or successors arising out of or related to the performance of the services hereunder by Cardinal, regardless of whether such claim is based upon any of the above stated reasons or otherwise. Results relate only to the samples identified above. This report shall not be reproduced except in full with written approval of Cardinal Laboratories.

Celey D. Keene, Lab Director/Quality Manager



PHONE (575) 393-2326 ° 101 E. MARLAND ° HOBBS, NM 88240

Analytical Results For:

ENSOLUM, LLC
 BEAUX JENNINGS
 705 W WADLEY AVE.
 MIDLAND TX, 79705
 Fax To:

Received:	05/18/2023	Sampling Date:	05/18/2023
Reported:	05/23/2023	Sampling Type:	Soil
Project Name:	MESA VERDE BONE SPRINGS 046H	Sampling Condition:	Cool & Intact
Project Number:	03B1417064	Sample Received By:	Shalyn Rodriguez
Project Location:	OXY 32.2120,-103.6843		

Sample ID: FS - 16 2' (H232524-16)

BTEx 8021B		mg/kg		Analyzed By: JH/						
Analyte	Result	Reporting Limit	Analyzed	Method Blank	BS	% Recovery	True Value QC	RPD	Qualifier	
Benzene*	<0.050	0.050	05/21/2023	ND	2.12	106	2.00	1.76		
Toluene*	<0.050	0.050	05/21/2023	ND	2.06	103	2.00	2.69		
Ethylbenzene*	<0.050	0.050	05/21/2023	ND	2.15	107	2.00	0.491		
Total Xylenes*	<0.150	0.150	05/21/2023	ND	6.40	107	6.00	0.584		
Total BTEx	<0.300	0.300	05/21/2023	ND						

Surrogate: 4-Bromofluorobenzene (PID) 108 % 71.5-134

Chloride, SM4500CI-B		mg/kg		Analyzed By: AC						
Analyte	Result	Reporting Limit	Analyzed	Method Blank	BS	% Recovery	True Value QC	RPD	Qualifier	
Chloride	192	16.0	05/19/2023	ND	416	104	400	3.77		

TPH 8015M		mg/kg		Analyzed By: MS					
Analyte	Result	Reporting Limit	Analyzed	Method Blank	BS	% Recovery	True Value QC	RPD	Qualifier
GRO C6-C10*	<10.0	10.0	05/19/2023	ND	178	88.9	200	7.10	
DRO >C10-C28*	<10.0	10.0	05/19/2023	ND	169	84.5	200	4.39	
EXT DRO >C28-C36	<10.0	10.0	05/19/2023	ND					

Surrogate: 1-Chlorooctane 128 % 48.2-134

Surrogate: 1-Chlorooctadecane 123 % 49.1-148

Cardinal Laboratories

*=Accredited Analyte

PLEASE NOTE: Liability and Damages. Cardinal's liability and client's exclusive remedy for any claim arising, whether based in contract or tort, shall be limited to the amount paid by client for analyses. All claims, including those for negligence and any other cause whatsoever shall be deemed waived unless made in writing and received by Cardinal within thirty (30) days after completion of the applicable service. In no event shall Cardinal be liable for incidental or consequential damages, including, without limitation, business interruptions, loss of use, or loss of profits incurred by client, its subsidiaries, affiliates or successors arising out of or related to the performance of the services hereunder by Cardinal, regardless of whether such claim is based upon any of the above stated reasons or otherwise. Results relate only to the samples identified above. This report shall not be reproduced except in full with written approval of Cardinal Laboratories.

Celey D. Keene, Lab Director/Quality Manager



PHONE (575) 393-2326 ° 101 E. MARLAND ° HOBBS, NM 88240

Analytical Results For:

ENSOLUM, LLC
 BEAUX JENNINGS
 705 W WADLEY AVE.
 MIDLAND TX, 79705
 Fax To:

Received:	05/18/2023	Sampling Date:	05/18/2023
Reported:	05/23/2023	Sampling Type:	Soil
Project Name:	MESA VERDE BONE SPRINGS 046H	Sampling Condition:	Cool & Intact
Project Number:	03B1417064	Sample Received By:	Shalyn Rodriguez
Project Location:	OXY 32.2120,-103.6843		

Sample ID: FS - 17 2' (H232524-17)

BTEx 8021B		mg/kg		Analyzed By: JH						
Analyte	Result	Reporting Limit	Analyzed	Method Blank	BS	% Recovery	True Value QC	RPD	Qualifier	
Benzene*	<0.050	0.050	05/20/2023	ND	2.29	115	2.00	3.84	QM-07	
Toluene*	<0.050	0.050	05/20/2023	ND	2.27	113	2.00	4.19		
Ethylbenzene*	<0.050	0.050	05/20/2023	ND	2.35	118	2.00	5.70		
Total Xylenes*	<0.150	0.150	05/20/2023	ND	6.89	115	6.00	6.03		
Total BTEx	<0.300	0.300	05/20/2023	ND						

Surrogate: 4-Bromofluorobenzene (PID) 102 % 71.5-134

Chloride, SM4500CI-B		mg/kg		Analyzed By: AC						
Analyte	Result	Reporting Limit	Analyzed	Method Blank	BS	% Recovery	True Value QC	RPD	Qualifier	
Chloride	288	16.0	05/19/2023	ND	416	104	400	3.77		

TPH 8015M		mg/kg		Analyzed By: MS					
Analyte	Result	Reporting Limit	Analyzed	Method Blank	BS	% Recovery	True Value QC	RPD	Qualifier
GRO C6-C10*	<10.0	10.0	05/19/2023	ND	178	88.9	200	7.10	
DRO >C10-C28*	19.2	10.0	05/19/2023	ND	169	84.5	200	4.39	
EXT DRO >C28-C36	<10.0	10.0	05/19/2023	ND					

Surrogate: 1-Chlorooctane 132 % 48.2-134

Surrogate: 1-Chlorooctadecane 124 % 49.1-148

Cardinal Laboratories

*=Accredited Analyte

PLEASE NOTE: Liability and Damages. Cardinal's liability and client's exclusive remedy for any claim arising, whether based in contract or tort, shall be limited to the amount paid by client for analyses. All claims, including those for negligence and any other cause whatsoever shall be deemed waived unless made in writing and received by Cardinal within thirty (30) days after completion of the applicable service. In no event shall Cardinal be liable for incidental or consequential damages, including, without limitation, business interruptions, loss of use, or loss of profits incurred by client, its subsidiaries, affiliates or successors arising out of or related to the performance of the services hereunder by Cardinal, regardless of whether such claim is based upon any of the above stated reasons or otherwise. Results relate only to the samples identified above. This report shall not be reproduced except in full with written approval of Cardinal Laboratories.

Celey D. Keene, Lab Director/Quality Manager



PHONE (575) 393-2326 ° 101 E. MARLAND ° HOBBS, NM 88240

Analytical Results For:

ENSOLUM, LLC
 BEAUX JENNINGS
 705 W WADLEY AVE.
 MIDLAND TX, 79705
 Fax To:

Received:	05/18/2023	Sampling Date:	05/18/2023
Reported:	05/23/2023	Sampling Type:	Soil
Project Name:	MESA VERDE BONE SPRINGS 046H	Sampling Condition:	Cool & Intact
Project Number:	03B1417064	Sample Received By:	Shalyn Rodriguez
Project Location:	OXY 32.2120,-103.6843		

Sample ID: FS - 18 2' (H232524-18)

BTEx 8021B		mg/kg		Analyzed By: JH						
Analyte	Result	Reporting Limit	Analyzed	Method Blank	BS	% Recovery	True Value QC	RPD	Qualifier	
Benzene*	<0.050	0.050	05/20/2023	ND	2.29	115	2.00	3.84		
Toluene*	<0.050	0.050	05/20/2023	ND	2.27	113	2.00	4.19		
Ethylbenzene*	<0.050	0.050	05/20/2023	ND	2.35	118	2.00	5.70		
Total Xylenes*	<0.150	0.150	05/20/2023	ND	6.89	115	6.00	6.03		
Total BTEx	<0.300	0.300	05/20/2023	ND						

Surrogate: 4-Bromofluorobenzene (PID) 97.3 % 71.5-134

Chloride, SM4500CI-B		mg/kg		Analyzed By: AC						
Analyte	Result	Reporting Limit	Analyzed	Method Blank	BS	% Recovery	True Value QC	RPD	Qualifier	
Chloride	336	16.0	05/19/2023	ND	416	104	400	3.77		

TPH 8015M		mg/kg		Analyzed By: MS					
Analyte	Result	Reporting Limit	Analyzed	Method Blank	BS	% Recovery	True Value QC	RPD	Qualifier
GRO C6-C10*	<10.0	10.0	05/21/2023	ND	178	88.9	200	7.10	
DRO >C10-C28*	<10.0	10.0	05/21/2023	ND	169	84.5	200	4.39	
EXT DRO >C28-C36	<10.0	10.0	05/21/2023	ND					

Surrogate: 1-Chlorooctane 124 % 48.2-134

Surrogate: 1-Chlorooctadecane 136 % 49.1-148

Cardinal Laboratories

*=Accredited Analyte

PLEASE NOTE: Liability and Damages. Cardinal's liability and client's exclusive remedy for any claim arising, whether based in contract or tort, shall be limited to the amount paid by client for analyses. All claims, including those for negligence and any other cause whatsoever shall be deemed waived unless made in writing and received by Cardinal within thirty (30) days after completion of the applicable service. In no event shall Cardinal be liable for incidental or consequential damages, including, without limitation, business interruptions, loss of use, or loss of profits incurred by client, its subsidiaries, affiliates or successors arising out of or related to the performance of the services hereunder by Cardinal, regardless of whether such claim is based upon any of the above stated reasons or otherwise. Results relate only to the samples identified above. This report shall not be reproduced except in full with written approval of Cardinal Laboratories.

Celey D. Keene, Lab Director/Quality Manager



PHONE (575) 393-2326 ° 101 E. MARLAND ° HOBBS, NM 88240

Analytical Results For:

ENSOLUM, LLC
 BEAUX JENNINGS
 705 W WADLEY AVE.
 MIDLAND TX, 79705
 Fax To:

Received: 05/18/2023
 Reported: 05/23/2023
 Project Name: MESA VERDE BONE SPRINGS 046H
 Project Number: 03B1417064
 Project Location: OXY 32.2120,-103.6843

Sampling Date: 05/18/2023
 Sampling Type: Soil
 Sampling Condition: Cool & Intact
 Sample Received By: Shalyn Rodriguez

Sample ID: FS - 19 2' (H232524-19)

BTEx 8021B		mg/kg		Analyzed By: JH						
Analyte	Result	Reporting Limit	Analyzed	Method Blank	BS	% Recovery	True Value QC	RPD	Qualifier	
Benzene*	<0.050	0.050	05/20/2023	ND	2.29	115	2.00	3.84		
Toluene*	<0.050	0.050	05/20/2023	ND	2.27	113	2.00	4.19		
Ethylbenzene*	<0.050	0.050	05/20/2023	ND	2.35	118	2.00	5.70		
Total Xylenes*	<0.150	0.150	05/20/2023	ND	6.89	115	6.00	6.03		
Total BTEx	<0.300	0.300	05/20/2023	ND						

Surrogate: 4-Bromofluorobenzene (PID) 100 % 71.5-134

Chloride, SM4500CI-B		mg/kg		Analyzed By: AC						
Analyte	Result	Reporting Limit	Analyzed	Method Blank	BS	% Recovery	True Value QC	RPD	Qualifier	
Chloride	80.0	16.0	05/19/2023	ND	416	104	400	3.77		

TPH 8015M		mg/kg		Analyzed By: MS					
Analyte	Result	Reporting Limit	Analyzed	Method Blank	BS	% Recovery	True Value QC	RPD	Qualifier
GRO C6-C10*	<10.0	10.0	05/19/2023	ND	178	88.9	200	7.10	
DRO >C10-C28*	<10.0	10.0	05/19/2023	ND	169	84.5	200	4.39	
EXT DRO >C28-C36	<10.0	10.0	05/19/2023	ND					

Surrogate: 1-Chlorooctane 134 % 48.2-134

Surrogate: 1-Chlorooctadecane 127 % 49.1-148

Cardinal Laboratories

*=Accredited Analyte

PLEASE NOTE: Liability and Damages. Cardinal's liability and client's exclusive remedy for any claim arising, whether based in contract or tort, shall be limited to the amount paid by client for analyses. All claims, including those for negligence and any other cause whatsoever shall be deemed waived unless made in writing and received by Cardinal within thirty (30) days after completion of the applicable service. In no event shall Cardinal be liable for incidental or consequential damages, including, without limitation, business interruptions, loss of use, or loss of profits incurred by client, its subsidiaries, affiliates or successors arising out of or related to the performance of the services hereunder by Cardinal, regardless of whether such claim is based upon any of the above stated reasons or otherwise. Results relate only to the samples identified above. This report shall not be reproduced except in full with written approval of Cardinal Laboratories.

Celey D. Keene, Lab Director/Quality Manager



PHONE (575) 393-2326 ° 101 E. MARLAND ° HOBBS, NM 88240

Analytical Results For:

ENSOLUM, LLC
 BEAUX JENNINGS
 705 W WADLEY AVE.
 MIDLAND TX, 79705
 Fax To:

Received: 05/18/2023
 Reported: 05/23/2023
 Project Name: MESA VERDE BONE SPRINGS 046H
 Project Number: 03B1417064
 Project Location: OXY 32.2120,-103.6843

Sampling Date: 05/18/2023
 Sampling Type: Soil
 Sampling Condition: Cool & Intact
 Sample Received By: Shalyn Rodriguez

Sample ID: FS - 20 2' (H232524-20)

BTEX 8021B		mg/kg		Analyzed By: JH						
Analyte	Result	Reporting Limit	Analyzed	Method Blank	BS	% Recovery	True Value QC	RPD	Qualifier	
Benzene*	<0.050	0.050	05/20/2023	ND	2.29	115	2.00	3.84		
Toluene*	<0.050	0.050	05/20/2023	ND	2.27	113	2.00	4.19		
Ethylbenzene*	<0.050	0.050	05/20/2023	ND	2.35	118	2.00	5.70		
Total Xylenes*	<0.150	0.150	05/20/2023	ND	6.89	115	6.00	6.03		
Total BTEX	<0.300	0.300	05/20/2023	ND						

Surrogate: 4-Bromofluorobenzene (PID) 100 % 71.5-134

Chloride, SM4500Cl-B		mg/kg		Analyzed By: AC						
Analyte	Result	Reporting Limit	Analyzed	Method Blank	BS	% Recovery	True Value QC	RPD	Qualifier	
Chloride	96.0	16.0	05/19/2023	ND	416	104	400	3.77		

TPH 8015M		mg/kg		Analyzed By: MS					
Analyte	Result	Reporting Limit	Analyzed	Method Blank	BS	% Recovery	True Value QC	RPD	Qualifier
GRO C6-C10*	<10.0	10.0	05/19/2023	ND	178	88.9	200	7.10	
DRO >C10-C28*	<10.0	10.0	05/19/2023	ND	169	84.5	200	4.39	
EXT DRO >C28-C36	<10.0	10.0	05/19/2023	ND					

Surrogate: 1-Chlorooctane 121 % 48.2-134

Surrogate: 1-Chlorooctadecane 115 % 49.1-148

Cardinal Laboratories

*=Accredited Analyte

PLEASE NOTE: Liability and Damages. Cardinal's liability and client's exclusive remedy for any claim arising, whether based in contract or tort, shall be limited to the amount paid by client for analyses. All claims, including those for negligence and any other cause whatsoever shall be deemed waived unless made in writing and received by Cardinal within thirty (30) days after completion of the applicable service. In no event shall Cardinal be liable for incidental or consequential damages, including, without limitation, business interruptions, loss of use, or loss of profits incurred by client, its subsidiaries, affiliates or successors arising out of or related to the performance of the services hereunder by Cardinal, regardless of whether such claim is based upon any of the above stated reasons or otherwise. Results relate only to the samples identified above. This report shall not be reproduced except in full with written approval of Cardinal Laboratories.

Celey D. Keene, Lab Director/Quality Manager



PHONE (575) 393-2326 ° 101 E. MARLAND ° HOBBS, NM 88240

Analytical Results For:

ENSOLUM, LLC
 BEAUX JENNINGS
 705 W WADLEY AVE.
 MIDLAND TX, 79705
 Fax To:

Received:	05/18/2023	Sampling Date:	05/18/2023
Reported:	05/23/2023	Sampling Type:	Soil
Project Name:	MESA VERDE BONE SPRINGS 046H	Sampling Condition:	Cool & Intact
Project Number:	03B1417064	Sample Received By:	Shalyn Rodriguez
Project Location:	OXY 32.2120,-103.6843		

Sample ID: SW - 1 0-2' (H232524-21)

BTEx 8021B		mg/kg		Analyzed By: JH						
Analyte	Result	Reporting Limit	Analyzed	Method Blank	BS	% Recovery	True Value QC	RPD	Qualifier	
Benzene*	<0.050	0.050	05/20/2023	ND	2.29	115	2.00	3.84		
Toluene*	<0.050	0.050	05/20/2023	ND	2.27	113	2.00	4.19		
Ethylbenzene*	<0.050	0.050	05/20/2023	ND	2.35	118	2.00	5.70		
Total Xylenes*	<0.150	0.150	05/20/2023	ND	6.89	115	6.00	6.03		
Total BTEx	<0.300	0.300	05/20/2023	ND						

Surrogate: 4-Bromofluorobenzene (PID) 99.3 % 71.5-134

Chloride, SM4500Cl-B		mg/kg		Analyzed By: AC						
Analyte	Result	Reporting Limit	Analyzed	Method Blank	BS	% Recovery	True Value QC	RPD	Qualifier	
Chloride	224	16.0	05/19/2023	ND	416	104	400	3.77		

TPH 8015M		mg/kg		Analyzed By: MS					
Analyte	Result	Reporting Limit	Analyzed	Method Blank	BS	% Recovery	True Value QC	RPD	Qualifier
GRO C6-C10*	<10.0	10.0	05/22/2023	ND	177	88.3	200	3.74	
DRO >C10-C28*	27.0	10.0	05/22/2023	ND	188	94.2	200	5.97	
EXT DRO >C28-C36	29.5	10.0	05/22/2023	ND					

Surrogate: 1-Chlorooctane 110 % 48.2-134

Surrogate: 1-Chlorooctadecane 108 % 49.1-148

Cardinal Laboratories

*=Accredited Analyte

PLEASE NOTE: Liability and Damages. Cardinal's liability and client's exclusive remedy for any claim arising, whether based in contract or tort, shall be limited to the amount paid by client for analyses. All claims, including those for negligence and any other cause whatsoever shall be deemed waived unless made in writing and received by Cardinal within thirty (30) days after completion of the applicable service. In no event shall Cardinal be liable for incidental or consequential damages, including, without limitation, business interruptions, loss of use, or loss of profits incurred by client, its subsidiaries, affiliates or successors arising out of or related to the performance of the services hereunder by Cardinal, regardless of whether such claim is based upon any of the above stated reasons or otherwise. Results relate only to the samples identified above. This report shall not be reproduced except in full with written approval of Cardinal Laboratories.

Celey D. Keene, Lab Director/Quality Manager



PHONE (575) 393-2326 ° 101 E. MARLAND ° HOBBS, NM 88240

Analytical Results For:

ENSOLUM, LLC
 BEAUX JENNINGS
 705 W WADLEY AVE.
 MIDLAND TX, 79705
 Fax To:

Received: 05/18/2023
 Reported: 05/23/2023
 Project Name: MESA VERDE BONE SPRINGS 046H
 Project Number: 03B1417064
 Project Location: OXY 32.2120,-103.6843

Sampling Date: 05/18/2023
 Sampling Type: Soil
 Sampling Condition: Cool & Intact
 Sample Received By: Shalyn Rodriguez

Sample ID: SW - 2 0-2' (H232524-22)

BTEx 8021B		mg/kg		Analyzed By: JH					
Analyte	Result	Reporting Limit	Analyzed	Method Blank	BS	% Recovery	True Value QC	RPD	Qualifier
Benzene*	<0.050	0.050	05/20/2023	ND	2.29	115	2.00	3.84	
Toluene*	<0.050	0.050	05/20/2023	ND	2.27	113	2.00	4.19	
Ethylbenzene*	<0.050	0.050	05/20/2023	ND	2.35	118	2.00	5.70	
Total Xylenes*	<0.150	0.150	05/20/2023	ND	6.89	115	6.00	6.03	
Total BTEx	<0.300	0.300	05/20/2023	ND					

Surrogate: 4-Bromofluorobenzene (PID) 98.4 % 71.5-134

Chloride, SM4500CI-B		mg/kg		Analyzed By: AC					
Analyte	Result	Reporting Limit	Analyzed	Method Blank	BS	% Recovery	True Value QC	RPD	Qualifier
Chloride	48.0	16.0	05/19/2023	ND	416	104	400	3.77	

TPH 8015M		mg/kg		Analyzed By: MS					
Analyte	Result	Reporting Limit	Analyzed	Method Blank	BS	% Recovery	True Value QC	RPD	Qualifier
GRO C6-C10*	<10.0	10.0	05/22/2023	ND	177	88.3	200	3.74	
DRO >C10-C28*	15.4	10.0	05/22/2023	ND	188	94.2	200	5.97	
EXT DRO >C28-C36	12.6	10.0	05/22/2023	ND					

Surrogate: 1-Chlorooctane 106 % 48.2-134

Surrogate: 1-Chlorooctadecane 104 % 49.1-148

Cardinal Laboratories

*=Accredited Analyte

PLEASE NOTE: Liability and Damages. Cardinal's liability and client's exclusive remedy for any claim arising, whether based in contract or tort, shall be limited to the amount paid by client for analyses. All claims, including those for negligence and any other cause whatsoever shall be deemed waived unless made in writing and received by Cardinal within thirty (30) days after completion of the applicable service. In no event shall Cardinal be liable for incidental or consequential damages, including, without limitation, business interruptions, loss of use, or loss of profits incurred by client, its subsidiaries, affiliates or successors arising out of or related to the performance of the services hereunder by Cardinal, regardless of whether such claim is based upon any of the above stated reasons or otherwise. Results relate only to the samples identified above. This report shall not be reproduced except in full with written approval of Cardinal Laboratories.

Celey D. Keene, Lab Director/Quality Manager



PHONE (575) 393-2326 ° 101 E. MARLAND ° HOBBS, NM 88240

Analytical Results For:

ENSOLUM, LLC
 BEAUX JENNINGS
 705 W WADLEY AVE.
 MIDLAND TX, 79705
 Fax To:

Received:	05/18/2023	Sampling Date:	05/18/2023
Reported:	05/23/2023	Sampling Type:	Soil
Project Name:	MESA VERDE BONE SPRINGS 046H	Sampling Condition:	Cool & Intact
Project Number:	03B1417064	Sample Received By:	Shalyn Rodriguez
Project Location:	OXY 32.2120,-103.6843		

Sample ID: SW - 3 0-2' (H232524-23)

BTEX 8021B		mg/kg		Analyzed By: JH						
Analyte	Result	Reporting Limit	Analyzed	Method Blank	BS	% Recovery	True Value QC	RPD	Qualifier	
Benzene*	<0.050	0.050	05/20/2023	ND	2.29	115	2.00	3.84		
Toluene*	<0.050	0.050	05/20/2023	ND	2.27	113	2.00	4.19		
Ethylbenzene*	<0.050	0.050	05/20/2023	ND	2.35	118	2.00	5.70		
Total Xylenes*	<0.150	0.150	05/20/2023	ND	6.89	115	6.00	6.03		
Total BTEX	<0.300	0.300	05/20/2023	ND						

Surrogate: 4-Bromofluorobenzene (PID) 100 % 71.5-134

Chloride, SM4500Cl-B		mg/kg		Analyzed By: AC						
Analyte	Result	Reporting Limit	Analyzed	Method Blank	BS	% Recovery	True Value QC	RPD	Qualifier	
Chloride	2560	16.0	05/19/2023	ND	416	104	400	3.77		

TPH 8015M		mg/kg		Analyzed By: MS					
Analyte	Result	Reporting Limit	Analyzed	Method Blank	BS	% Recovery	True Value QC	RPD	Qualifier
GRO C6-C10*	<10.0	10.0	05/21/2023	ND	177	88.3	200	3.74	
DRO >C10-C28*	24.9	10.0	05/21/2023	ND	188	94.2	200	5.97	
EXT DRO >C28-C36	<10.0	10.0	05/21/2023	ND					

Surrogate: 1-Chlorooctane 122 % 48.2-134

Surrogate: 1-Chlorooctadecane 133 % 49.1-148

Cardinal Laboratories

*=Accredited Analyte

PLEASE NOTE: Liability and Damages. Cardinal's liability and client's exclusive remedy for any claim arising, whether based in contract or tort, shall be limited to the amount paid by client for analyses. All claims, including those for negligence and any other cause whatsoever shall be deemed waived unless made in writing and received by Cardinal within thirty (30) days after completion of the applicable service. In no event shall Cardinal be liable for incidental or consequential damages, including, without limitation, business interruptions, loss of use, or loss of profits incurred by client, its subsidiaries, affiliates or successors arising out of or related to the performance of the services hereunder by Cardinal, regardless of whether such claim is based upon any of the above stated reasons or otherwise. Results relate only to the samples identified above. This report shall not be reproduced except in full with written approval of Cardinal Laboratories.

Celey D. Keene, Lab Director/Quality Manager



PHONE (575) 393-2326 ° 101 E. MARLAND ° HOBBS, NM 88240

Notes and Definitions

S-04	The surrogate recovery for this sample is outside of established control limits due to a sample matrix effect.
QM-07	The spike recovery was outside acceptance limits for the MS and/or MSD. The batch was accepted based on acceptable LCS recovery.
ND	Analyte NOT DETECTED at or above the reporting limit
RPD	Relative Percent Difference
**	Samples not received at proper temperature of 6°C or below.
***	Insufficient time to reach temperature.
-	Chloride by SM4500Cl-B does not require samples be received at or below 6°C Samples reported on an as received basis (wet) unless otherwise noted on report

Cardinal Laboratories

*=Accredited Analyte

PLEASE NOTE: Liability and Damages. Cardinal's liability and client's exclusive remedy for any claim arising, whether based in contract or tort, shall be limited to the amount paid by client for analyses. All claims, including those for negligence and any other cause whatsoever shall be deemed waived unless made in writing and received by Cardinal within thirty (30) days after completion of the applicable service. In no event shall Cardinal be liable for incidental or consequential damages, including, without limitation, business interruptions, loss of use, or loss of profits incurred by client, its subsidiaries, affiliates or successors arising out of or related to the performance of the services hereunder by Cardinal, regardless of whether such claim is based upon any of the above stated reasons or otherwise. Results relate only to the samples identified above. This report shall not be reproduced except in full with written approval of Cardinal Laboratories.

A handwritten signature in black ink, appearing to read "Celey D. Keene".

Celey D. Keene, Lab Director/Quality Manager



CHAIN-OF-CUSTODY AND ANALYSIS REQUEST

101 East Marland, Hobbs, NM 88240
(575) 393-2326 FAX (575) 393-2476

Company Name: Ensolum, LLC Project Manager: Beaux Jennings Address: 601 N. Marienfeld St. STE 400 City: Midland State: TX Zip: 79701 Phone #: 210-219-8858 Fax #: Project #: 03B1417064 Project Owner: Project Name: Mesa Verde Bone Springs 046H Project Location: 32.2120, -103.6843 Sampler Name: Kailee Smith				BILL TO P.O. #: Company: Oxy USA, Inc. Attn: Wade Dittrich Address: City: State: Zip: Phone #: 575-390-2828 Fax #: 												ANALYSIS REQUEST <div style="display: flex; justify-content: space-between;"> <div style="width: 30%;"> Chlorides 4500 BTEX 80215 TPH 8065m </div> <div style="width: 65%;"></div> </div>																					
FOR LAB USE ONLY																																					
Lab I.D. H23252H		Sample I.D. FS-1		Sample Depth (feet) 2'		(G)RAB OR (C)OMP. # CONTAINERS		MATRIX GROUNDWATER WASTEWATER SOIL OIL SLUDGE OTHER:						PRESERV. ACID/BASE: ICE / COOL OTHER:		SAMPLING DATE TIME																					
1		FS-1		2'		C 1		X						X		5-18-23 0834		✓ X X																			
2		FS-2		2'		C 1		X						X		5-18-23 0836		✓ X X																			
3		FS-3		2'		C 1		X						X		5-18-23 0838		✓ X X																			
4		FS-4		2'		C 1		X						X		5-18-23 0840		✓ X X																			
5		FS-5		2'		C 1		X						X		5-18-23 0842		✓ X X																			
6		FS-6		2'		C 1		X						X		5-18-23 0844		✓ X X																			
7		FS-7		2'		C 1		X						X		5-18-23 0846		✓ X X																			
8		FS-8		2'		C 1		X						X		5-18-23 0848		✓ X X																			
9		FS-9		2'		C 1		X						X		5-18-23 0850		✓ X X																			
10		FS-10		2'		C 1		X						X		5-18-23 0852		✓ X X																			
PLEASE NOTE: Liability and Damages. Cardinal's liability and client's exclusive remedy for any claim arising whether based in contract or tort, shall be limited to the amount paid by the client for the analyses. All claims including those for negligence and any other cause whatsoever shall be deemed waived unless made in writing and received by Cardinal within 30 days after completion of the applicable service. In no event shall Cardinal be liable for incidental or consequential damages, including without limitation, business interruptions, loss of use, or loss of profits incurred by client, its subsidiaries, affiliates or successors arising out of or related to the performance of services hereunder by Cardinal, regardless of whether such claim is based upon any of the above stated reasons or otherwise.																																					
Relinquished By: Kailee Smith Date: 5/18/23 Time: 1241										Received By: S. Jennings Date: Time: 										Verbal Result: <input type="checkbox"/> Yes <input type="checkbox"/> No Add'l Phone #: All Results are emailed. Please provide Email address: Bjennings@ensolum.com REMARKS: 																	
Relinquished By: Date: Time: 										Received By: Date: Time: 										REMARKS: 																	
Delivered By: (Circle One) Sampler - UPS - Bus - Other: 										Observed Temp. °C: 24.1 Corrected Temp. °C: 1.8										Sample Condition Cool Intact <input checked="" type="checkbox"/> Yes <input type="checkbox"/> No Checked By: SK (Initials)										Turnaround Time: Standard <input checked="" type="checkbox"/> Rush <input type="checkbox"/> Bacteria (only) Sample Condition Cool Intact <input type="checkbox"/> Yes <input type="checkbox"/> No Observed Temp. °C: Corrected Temp. °C: 							

† Cardinal cannot accept verbal changes. Please email changes to celey.keene@cardinallabsnm.com



101 East Marland, Hobbs, NM 88240
(575) 393-2326 FAX (575) 393-2476

CHAIN-OF-CUSTODY AND ANALYSIS REQUEST

[illegible]



CHAIN-OF-CUSTODY AND ANALYSIS REQUEST

101 East Marland, Hobbs, NM 88240
(575) 393-2326 FAX (575) 393-2476

3 of 3

Company Name: Ensolum, LLC				BILL TO				ANALYSIS REQUEST											
Project Manager: Beaux Jennings				P.O. #:				<div style="display: flex; flex-direction: column; align-items: center;"> <div style="writing-mode: vertical-rl; transform: rotate(180deg);">Chlorides 4500</div> <div style="writing-mode: vertical-rl; transform: rotate(180deg);">BTEX 80218</div> <div style="writing-mode: vertical-rl; transform: rotate(180deg);">TPH 8015m</div> </div>											
Address: 601 N. Marinfeld St. STE 400				Company: Oxy USA, Inc.															
City: Midland State: TX Zip: 79701				Attn: Wade Dittrich															
Phone #: 210-219-8858 Fax #:				Address:															
Project #:				City:															
Project Name:				State: Zip:															
Project Location:				Phone #: 575-390-2828															
Sampler Name:				Fax #:															
FOR LAB USE ONLY																			
Lab I.D.	Sample I.D.	Sample Depth (feet)	(GRAB OR C) OMP.	# CONTAINERS	MATRIX					PRESERV.	SAMPLING								
					GROUNDWATER	WASTEWATER	SOIL	OIL	SLUDGE	OTHER:	ACID/BASE:	ICE / COOL	OTHER:	DATE	TIME				
4232524																			
21	SW-1	0-2'	C	1			X					X		5-18-23	0944	X			
22	SW-2	0-2'	C	1			X					X		5-16-23	0946	X			
23	SW-3	0-2'	C	1			X					X		5-18-23	0948	X			

PLEASE NOTE: Liability and Damages. Cardinal's liability and client's exclusive remedy for any claim arising whether based in contract or tort, shall be limited to the amount paid by the client for the analyses. All claims including those for negligence and any other cause whatsoever shall be deemed waived unless made in writing and received by Cardinal within 30 days after completion of the applicable service. In no event shall Cardinal be liable for incidental or consequential damages, including without limitation, business interruptions, loss of use, or loss of profits incurred by client, its subsidiaries, affiliates or successors arising out of or related to the performance of services hereunder by Cardinal, regardless of whether such claim is based upon any of the above stated reasons or otherwise.

Relinquished By:	Date: 5/18/23	Received By:	Verbal Result: <input type="checkbox"/> Yes <input checked="" type="checkbox"/> No Add'l Phone #:
	Time: 1241		All Results are emailed. Please provide Email address:
Relinquished By:	Date:	Received By:	BJennings@ensolum.com
	Time:		REMARKS:
Delivered By: (Circle One)	Observed Temp. °C: 2.4°C	Sample Condition	Turnaround Time: Standard <input checked="" type="checkbox"/> Rush <input type="checkbox"/>
Sampler - UPS - Bus - Other:	Corrected Temp. °C: 1.8°C	Cool Intact <input checked="" type="checkbox"/> Yes <input type="checkbox"/> No <input type="checkbox"/> No	Bacteria (only) Sample Condition
		CHECKED BY: (Initials)	Cool Intact <input checked="" type="checkbox"/> Yes <input type="checkbox"/> No <input type="checkbox"/> No
			Observed Temp. °C
			Thermometer ID #113
			Correction Factor -0.5°C
			Corrected Temp. °C

† Cardinal cannot accept verbal changes. Please email changes to celey.keene@cardinallabsnm.com



PHONE (575) 393-2326 ° 101 E. MARLAND ° HOBBS, NM 88240

June 20, 2023

BEAUX JENNINGS
ENSOLUM, LLC
705 W WADLEY AVE.
MIDLAND, TX 79705

RE: MESA VERDE BONE SPRINGS 046H

Enclosed are the results of analyses for samples received by the laboratory on 06/16/23 15:00.

Cardinal Laboratories is accredited through Texas NELAP under certificate number T104704398-22-15. Accreditation applies to drinking water, non-potable water and solid and chemical materials. All accredited analytes are denoted by an asterisk (*). For a complete list of accredited analytes and matrices visit the TCEQ website at www.tceq.texas.gov/field/qa/lab_accred_certif.html.

Cardinal Laboratories is accredited through the State of Colorado Department of Public Health and Environment for:

Method EPA 552.2	Haloacetic Acids (HAA-5)
Method EPA 524.2	Total Trihalomethanes (TTHM)
Method EPA 524.4	Regulated VOCs (V1, V2, V3)

Accreditation applies to public drinking water matrices.

This report meets NELAP requirements and is made up of a cover page, analytical results, and a copy of the original chain-of-custody. If you have any questions concerning this report, please feel free to contact me.

Sincerely,

A handwritten signature in black ink that reads "Celey D. Keene". The signature is written in a cursive, flowing style.

Celey D. Keene
Lab Director/Quality Manager



PHONE (575) 393-2326 ° 101 E. MARLAND ° HOBBS, NM 88240

Analytical Results For:

ENSOLUM, LLC
 BEAUX JENNINGS
 705 W WADLEY AVE.
 MIDLAND TX, 79705
 Fax To:

Received:	06/16/2023	Sampling Date:	06/16/2023
Reported:	06/20/2023	Sampling Type:	Soil
Project Name:	MESA VERDE BONE SPRINGS 046H	Sampling Condition:	Cool & Intact
Project Number:	03B1417064	Sample Received By:	Tamara Oldaker
Project Location:	OXY 32.2120,-103.6843		

Sample ID: FS - 1 (H233136-01)

Chloride, SM4500CI-B		mg/kg		Analyzed By: AC					
Analyte	Result	Reporting Limit	Analyzed	Method Blank	BS	% Recovery	True Value QC	RPD	Qualifier
Chloride	32.0	16.0	06/19/2023	ND	416	104	400	7.41	

Sample ID: FS - 7 (H233136-02)

Chloride, SM4500CI-B		mg/kg		Analyzed By: AC					
Analyte	Result	Reporting Limit	Analyzed	Method Blank	BS	% Recovery	True Value QC	RPD	Qualifier
Chloride	32.0	16.0	06/19/2023	ND	416	104	400	7.41	

Sample ID: FS - 8 (H233136-03)

Chloride, SM4500CI-B		mg/kg		Analyzed By: AC					
Analyte	Result	Reporting Limit	Analyzed	Method Blank	BS	% Recovery	True Value QC	RPD	Qualifier
Chloride	32.0	16.0	06/19/2023	ND	416	104	400	7.41	

Sample ID: SW - 3 (H233136-04)

Chloride, SM4500CI-B		mg/kg		Analyzed By: AC					
Analyte	Result	Reporting Limit	Analyzed	Method Blank	BS	% Recovery	True Value QC	RPD	Qualifier
Chloride	1140	16.0	06/19/2023	ND	416	104	400	7.41	

Cardinal Laboratories

*=Accredited Analyte

PLEASE NOTE: Liability and Damages. Cardinal's liability and client's exclusive remedy for any claim arising, whether based in contract or tort, shall be limited to the amount paid by client for analyses. All claims, including those for negligence and any other cause whatsoever shall be deemed waived unless made in writing and received by Cardinal within thirty (30) days after completion of the applicable service. In no event shall Cardinal be liable for incidental or consequential damages, including, without limitation, business interruptions, loss of use, or loss of profits incurred by client, its subsidiaries, affiliates or successors arising out of or related to the performance of the services hereunder by Cardinal, regardless of whether such claim is based upon any of the above stated reasons or otherwise. Results relate only to the samples identified above. This report shall not be reproduced except in full with written approval of Cardinal Laboratories.

Celey D. Keene, Lab Director/Quality Manager



PHONE (575) 393-2326 ° 101 E. MARLAND ° HOBBS, NM 88240

Notes and Definitions

ND	Analyte NOT DETECTED at or above the reporting limit
RPD	Relative Percent Difference
**	Samples not received at proper temperature of 6°C or below.
***	Insufficient time to reach temperature.
-	Chloride by SM4500Cl-B does not require samples be received at or below 6°C Samples reported on an as received basis (wet) unless otherwise noted on report

Cardinal Laboratories

*=Accredited Analyte

PLEASE NOTE: Liability and Damages. Cardinal's liability and client's exclusive remedy for any claim arising, whether based in contract or tort, shall be limited to the amount paid by client for analyses. All claims, including those for negligence and any other cause whatsoever shall be deemed waived unless made in writing and received by Cardinal within thirty (30) days after completion of the applicable service. In no event shall Cardinal be liable for incidental or consequential damages, including, without limitation, business interruptions, loss of use, or loss of profits incurred by client, its subsidiaries, affiliates or successors arising out of or related to the performance of the services hereunder by Cardinal, regardless of whether such claim is based upon any of the above stated reasons or otherwise. Results relate only to the samples identified above. This report shall not be reproduced except in full with written approval of Cardinal Laboratories.

A handwritten signature in black ink, appearing to read "Celey D. Keene".

Celey D. Keene, Lab Director/Quality Manager



CHAIN-OF-CUSTODY AND ANALYSIS REQUEST

101 East Marland, Hobbs, NM 88240
(575) 393-2326 FAX (575) 393-2476

Company Name: Ensolum, LLC				BILL TO				ANALYSIS REQUEST											
Project Manager: Beaux Jennings				P.O. #:															
Address: 601 N. Marienfeld St. STE 400				Company: Oxy USA, Inc.															
City: Midland State: TX Zip: 79701				Attn: Wade Dittrich															
Phone #: 210-219-8858 Fax #:				Address:															
Project #: 03B1417664 Project Owner:				City:															
Project Name: Mesa Verde Bone Springs 046H				State: Zip:															
Project Location: 32.2120, -103.6843 Lea County, NM				Phone #: 575-390-2828															
Sampler Name: Keiley Smith				Fax #:															
FOR LAB USE ONLY				MATRIX				PRESERV.				SAMPLING							
Lab I.D.	Sample I.D.	Sample Depth (feet)	(G)RAB OR (C)OMP.	# CONTAINERS	GROUNDWATER	WASTEWATER	SOIL	OIL	SLUDGE	OTHER :	ACID/BASE:	ICE / COOL	OTHER :	DATE	TIME				
H233136	FS-1		C	1			X				X			6-16-23	0938	X			
1	FS-7		C	1			X				X			6-16-23	0940	X			
2	FS-8		C	1			X				X			6-16-23	0942	X			
3	SW-3		C	1			X				X			6-16-23	1320	X			
4																			
NFE																			
LS																			

PLEASE NOTE: Liability and Damages. Cardinal's liability and client's exclusive remedy for any claim arising whether based in contract or tort, shall be limited to the amount paid by the client for the analyses. All claims including those for negligence and any other cause whatsoever shall be deemed waived unless made in writing and received by Cardinal within 30 days after completion of the applicable service. In no event shall Cardinal be liable for incidental or consequential damages, including without limitation, business interruptions, loss of use, or loss of profits incurred by client, its subsidiaries, affiliates or successors arising out of or related to the performance of services hereunder by Cardinal, regardless of whether such claim is based upon any of the above stated reasons or otherwise.

Relinquished By:	Date: 6-16-23	Received By:	Verbal Result: <input type="checkbox"/> Yes <input type="checkbox"/> No Add'l Phone #:
	Time: 1:50		All Results are emailed. Please provide Email address:
			B.Jennings@ensolum.com
Relinquished By:	Date:	Received By:	REMARKS:
	Time:		
Delivered By: (Circle One)	Observed Temp. °C 2.8	Sample Condition Cool Intact <input checked="" type="checkbox"/> Yes <input type="checkbox"/> No	Turnaround Time: Standard <input checked="" type="checkbox"/> Rush <input type="checkbox"/>
Sampler - UPS - Bus - Other:	Corrected Temp. °C 2.2	CHECKED BY: (Initials)	Bacteria (only) Sample Condition Cool Intact <input type="checkbox"/> Yes <input type="checkbox"/> No <input type="checkbox"/> Yes <input type="checkbox"/> No
			Thermometer ID #113
			Correction Factor -0.5°C

† Cardinal cannot accept verbal changes. Please email changes to celey.keene@cardinallabsnm.com



PHONE (575) 393-2326 ° 101 E. MARLAND ° HOBBS, NM 88240

July 03, 2023

BEAUX JENNINGS
ENSOLUM, LLC
705 W WADLEY AVE.
MIDLAND, TX 79705

RE: MESA VERDE BONE SPRINGS 046H

Enclosed are the results of analyses for samples received by the laboratory on 06/30/23 13:35.

Cardinal Laboratories is accredited through Texas NELAP under certificate number T104704398-22-15. Accreditation applies to drinking water, non-potable water and solid and chemical materials. All accredited analytes are denoted by an asterisk (*). For a complete list of accredited analytes and matrices visit the TCEQ website at www.tceq.texas.gov/field/qa/lab_accred_certif.html.

Cardinal Laboratories is accredited through the State of Colorado Department of Public Health and Environment for:

Method EPA 552.2	Haloacetic Acids (HAA-5)
Method EPA 524.2	Total Trihalomethanes (TTHM)
Method EPA 524.4	Regulated VOCs (V1, V2, V3)

Accreditation applies to public drinking water matrices.

This report meets NELAP requirements and is made up of a cover page, analytical results, and a copy of the original chain-of-custody. If you have any questions concerning this report, please feel free to contact me.

Sincerely,

A handwritten signature in black ink that reads "Celey D. Keene". The signature is written in a cursive, flowing style.

Celey D. Keene
Lab Director/Quality Manager



PHONE (575) 393-2326 ° 101 E. MARLAND ° HOBBS, NM 88240

Analytical Results For:

ENSOLUM, LLC
 BEAUX JENNINGS
 705 W WADLEY AVE.
 MIDLAND TX, 79705
 Fax To:

Received:	06/30/2023	Sampling Date:	06/28/2023
Reported:	07/03/2023	Sampling Type:	Soil
Project Name:	MESA VERDE BONE SPRINGS 046H	Sampling Condition:	Cool & Intact
Project Number:	03B1417064	Sample Received By:	Tamara Oldaker
Project Location:	OXY 32.2120,-103.6843		

Sample ID: BG - N 0'-0.5' (H233391-01)

BTEX 8021B		mg/kg		Analyzed By: MS						
Analyte	Result	Reporting Limit	Analyzed	Method Blank	BS	% Recovery	True Value QC	RPD	Qualifier	
Benzene*	<0.050	0.050	06/30/2023	ND	2.09	104	2.00	3.08		
Toluene*	<0.050	0.050	06/30/2023	ND	2.04	102	2.00	3.21		
Ethylbenzene*	<0.050	0.050	06/30/2023	ND	1.97	98.4	2.00	3.88		
Total Xylenes*	<0.150	0.150	06/30/2023	ND	5.92	98.6	6.00	4.92		
Total BTEX	<0.300	0.300	06/30/2023	ND						

Surrogate: 4-Bromofluorobenzene (PID) 102 % 71.5-134

Chloride, SM4500Cl-B		mg/kg		Analyzed By: AC						
Analyte	Result	Reporting Limit	Analyzed	Method Blank	BS	% Recovery	True Value QC	RPD	Qualifier	
Chloride	64.0	16.0	06/30/2023	ND	416	104	400	3.77		

TPH 8015M		mg/kg		Analyzed By: MS					
Analyte	Result	Reporting Limit	Analyzed	Method Blank	BS	% Recovery	True Value QC	RPD	Qualifier
GRO C6-C10*	<10.0	10.0	06/30/2023	ND	164	81.9	200	1.89	
DRO >C10-C28*	<10.0	10.0	06/30/2023	ND	169	84.4	200	3.31	
EXT DRO >C28-C36	<10.0	10.0	06/30/2023	ND					

Surrogate: 1-Chlorooctane 88.4 % 48.2-134

Surrogate: 1-Chlorooctadecane 100 % 49.1-148

Cardinal Laboratories

*=Accredited Analyte

PLEASE NOTE: Liability and Damages. Cardinal's liability and client's exclusive remedy for any claim arising, whether based in contract or tort, shall be limited to the amount paid by client for analyses. All claims, including those for negligence and any other cause whatsoever shall be deemed waived unless made in writing and received by Cardinal within thirty (30) days after completion of the applicable service. In no event shall Cardinal be liable for incidental or consequential damages, including, without limitation, business interruptions, loss of use, or loss of profits incurred by client, its subsidiaries, affiliates or successors arising out of or related to the performance of the services hereunder by Cardinal, regardless of whether such claim is based upon any of the above stated reasons or otherwise. Results relate only to the samples identified above. This report shall not be reproduced except in full with written approval of Cardinal Laboratories.

Celey D. Keene, Lab Director/Quality Manager



PHONE (575) 393-2326 ° 101 E. MARLAND ° HOBBS, NM 88240

Analytical Results For:

ENSOLUM, LLC
 BEAUX JENNINGS
 705 W WADLEY AVE.
 MIDLAND TX, 79705
 Fax To:

Received:	06/30/2023	Sampling Date:	06/28/2023
Reported:	07/03/2023	Sampling Type:	Soil
Project Name:	MESA VERDE BONE SPRINGS 046H	Sampling Condition:	Cool & Intact
Project Number:	03B1417064	Sample Received By:	Tamara Oldaker
Project Location:	OXY 32.2120,-103.6843		

Sample ID: BG - S 0'-0.5' (H233391-02)

BTX 8021B		mg/kg		Analyzed By: MS						
Analyte	Result	Reporting Limit	Analyzed	Method Blank	BS	% Recovery	True Value QC	RPD	Qualifier	
Benzene*	<0.050	0.050	06/30/2023	ND	2.09	104	2.00	3.08		
Toluene*	<0.050	0.050	06/30/2023	ND	2.04	102	2.00	3.21		
Ethylbenzene*	<0.050	0.050	06/30/2023	ND	1.97	98.4	2.00	3.88		
Total Xylenes*	<0.150	0.150	06/30/2023	ND	5.92	98.6	6.00	4.92		
Total BTX	<0.300	0.300	06/30/2023	ND						

Surrogate: 4-Bromofluorobenzene (PID) 103 % 71.5-134

Chloride, SM4500CI-B		mg/kg		Analyzed By: AC						
Analyte	Result	Reporting Limit	Analyzed	Method Blank	BS	% Recovery	True Value QC	RPD	Qualifier	
Chloride	16.0	16.0	06/30/2023	ND	416	104	400	3.77		

TPH 8015M		mg/kg		Analyzed By: MS					
Analyte	Result	Reporting Limit	Analyzed	Method Blank	BS	% Recovery	True Value QC	RPD	Qualifier
GRO C6-C10*	<10.0	10.0	06/30/2023	ND	164	81.9	200	1.89	
DRO >C10-C28*	<10.0	10.0	06/30/2023	ND	169	84.4	200	3.31	
EXT DRO >C28-C36	<10.0	10.0	06/30/2023	ND					

Surrogate: 1-Chlorooctane 90.2 % 48.2-134

Surrogate: 1-Chlorooctadecane 102 % 49.1-148

Cardinal Laboratories

*=Accredited Analyte

PLEASE NOTE: Liability and Damages. Cardinal's liability and client's exclusive remedy for any claim arising, whether based in contract or tort, shall be limited to the amount paid by client for analyses. All claims, including those for negligence and any other cause whatsoever shall be deemed waived unless made in writing and received by Cardinal within thirty (30) days after completion of the applicable service. In no event shall Cardinal be liable for incidental or consequential damages, including, without limitation, business interruptions, loss of use, or loss of profits incurred by client, its subsidiaries, affiliates or successors arising out of or related to the performance of the services hereunder by Cardinal, regardless of whether such claim is based upon any of the above stated reasons or otherwise. Results relate only to the samples identified above. This report shall not be reproduced except in full with written approval of Cardinal Laboratories.

Celey D. Keene, Lab Director/Quality Manager



PHONE (575) 393-2326 ° 101 E. MARLAND ° HOBBS, NM 88240

Analytical Results For:

ENSOLUM, LLC
 BEAUX JENNINGS
 705 W WADLEY AVE.
 MIDLAND TX, 79705
 Fax To:

Received:	06/30/2023	Sampling Date:	06/28/2023
Reported:	07/03/2023	Sampling Type:	Soil
Project Name:	MESA VERDE BONE SPRINGS 046H	Sampling Condition:	Cool & Intact
Project Number:	03B1417064	Sample Received By:	Tamara Oldaker
Project Location:	OXY 32.2120,-103.6843		

Sample ID: BG - E 0'-0.5' (H233391-03)

BTEx 8021B		mg/kg		Analyzed By: MS					
Analyte	Result	Reporting Limit	Analyzed	Method Blank	BS	% Recovery	True Value QC	RPD	Qualifier
Benzene*	<0.050	0.050	06/30/2023	ND	2.09	104	2.00	3.08	
Toluene*	<0.050	0.050	06/30/2023	ND	2.04	102	2.00	3.21	
Ethylbenzene*	<0.050	0.050	06/30/2023	ND	1.97	98.4	2.00	3.88	
Total Xylenes*	<0.150	0.150	06/30/2023	ND	5.92	98.6	6.00	4.92	
Total BTEX	<0.300	0.300	06/30/2023	ND					

Surrogate: 4-Bromofluorobenzene (PID) 102 % 71.5-134

Chloride, SM4500Cl-B		mg/kg		Analyzed By: AC					
Analyte	Result	Reporting Limit	Analyzed	Method Blank	BS	% Recovery	True Value QC	RPD	Qualifier
Chloride	192	16.0	06/30/2023	ND	416	104	400	3.77	

TPH 8015M		mg/kg		Analyzed By: MS					
Analyte	Result	Reporting Limit	Analyzed	Method Blank	BS	% Recovery	True Value QC	RPD	Qualifier
GRO C6-C10*	<10.0	10.0	06/30/2023	ND	164	81.9	200	1.89	
DRO >C10-C28*	<10.0	10.0	06/30/2023	ND	169	84.4	200	3.31	
EXT DRO >C28-C36	<10.0	10.0	06/30/2023	ND					

Surrogate: 1-Chlorooctane 84.9 % 48.2-134

Surrogate: 1-Chlorooctadecane 84.1 % 49.1-148

Cardinal Laboratories

*=Accredited Analyte

PLEASE NOTE: Liability and Damages. Cardinal's liability and client's exclusive remedy for any claim arising, whether based in contract or tort, shall be limited to the amount paid by client for analyses. All claims, including those for negligence and any other cause whatsoever shall be deemed waived unless made in writing and received by Cardinal within thirty (30) days after completion of the applicable service. In no event shall Cardinal be liable for incidental or consequential damages, including, without limitation, business interruptions, loss of use, or loss of profits incurred by client, its subsidiaries, affiliates or successors arising out of or related to the performance of the services hereunder by Cardinal, regardless of whether such claim is based upon any of the above stated reasons or otherwise. Results relate only to the samples identified above. This report shall not be reproduced except in full with written approval of Cardinal Laboratories.

Celey D. Keene, Lab Director/Quality Manager



PHONE (575) 393-2326 ° 101 E. MARLAND ° HOBBS, NM 88240

Analytical Results For:

ENSOLUM, LLC
 BEAUX JENNINGS
 705 W WADLEY AVE.
 MIDLAND TX, 79705
 Fax To:

Received:	06/30/2023	Sampling Date:	06/28/2023
Reported:	07/03/2023	Sampling Type:	Soil
Project Name:	MESA VERDE BONE SPRINGS 046H	Sampling Condition:	Cool & Intact
Project Number:	03B1417064	Sample Received By:	Tamara Oldaker
Project Location:	OXY 32.2120,-103.6843		

Sample ID: BG - W 0'-0.5' (H233391-04)

BTX 8021B		mg/kg		Analyzed By: MS					
Analyte	Result	Reporting Limit	Analyzed	Method Blank	BS	% Recovery	True Value QC	RPD	Qualifier
Benzene*	<0.050	0.050	06/30/2023	ND	2.09	104	2.00	3.08	
Toluene*	<0.050	0.050	06/30/2023	ND	2.04	102	2.00	3.21	
Ethylbenzene*	<0.050	0.050	06/30/2023	ND	1.97	98.4	2.00	3.88	
Total Xylenes*	<0.150	0.150	06/30/2023	ND	5.92	98.6	6.00	4.92	
Total BTX	<0.300	0.300	06/30/2023	ND					

Surrogate: 4-Bromofluorobenzene (PID) 103 % 71.5-134

Chloride, SM4500CI-B		mg/kg		Analyzed By: AC					
Analyte	Result	Reporting Limit	Analyzed	Method Blank	BS	% Recovery	True Value QC	RPD	Qualifier
Chloride	128	16.0	06/30/2023	ND	416	104	400	3.77	

TPH 8015M		mg/kg		Analyzed By: MS					
Analyte	Result	Reporting Limit	Analyzed	Method Blank	BS	% Recovery	True Value QC	RPD	Qualifier
GRO C6-C10*	<10.0	10.0	06/30/2023	ND	164	81.9	200	1.89	
DRO >C10-C28*	<10.0	10.0	06/30/2023	ND	169	84.4	200	3.31	
EXT DRO >C28-C36	<10.0	10.0	06/30/2023	ND					

Surrogate: 1-Chlorooctane 86.8 % 48.2-134

Surrogate: 1-Chlorooctadecane 88.0 % 49.1-148

Cardinal Laboratories

*=Accredited Analyte

PLEASE NOTE: Liability and Damages. Cardinal's liability and client's exclusive remedy for any claim arising, whether based in contract or tort, shall be limited to the amount paid by client for analyses. All claims, including those for negligence and any other cause whatsoever shall be deemed waived unless made in writing and received by Cardinal within thirty (30) days after completion of the applicable service. In no event shall Cardinal be liable for incidental or consequential damages, including, without limitation, business interruptions, loss of use, or loss of profits incurred by client, its subsidiaries, affiliates or successors arising out of or related to the performance of the services hereunder by Cardinal, regardless of whether such claim is based upon any of the above stated reasons or otherwise. Results relate only to the samples identified above. This report shall not be reproduced except in full with written approval of Cardinal Laboratories.

Celey D. Keene, Lab Director/Quality Manager



PHONE (575) 393-2326 ° 101 E. MARLAND ° HOBBS, NM 88240

Analytical Results For:

ENSOLUM, LLC
BEAUX JENNINGS
705 W WADLEY AVE.
MIDLAND TX, 79705
Fax To:

Received:	06/30/2023	Sampling Date:	06/28/2023
Reported:	07/03/2023	Sampling Type:	Soil
Project Name:	MESA VERDE BONE SPRINGS 046H	Sampling Condition:	Cool & Intact
Project Number:	03B1417064	Sample Received By:	Tamara Oldaker
Project Location:	OXY 32.2120,-103.6843		

Sample ID: SW - 3 0'-2' (H233391-05)

Chloride, SM4500Cl-B		mg/kg		Analyzed By: AC						
Analyte	Result	Reporting Limit	Analyzed	Method Blank	BS	% Recovery	True Value QC	RPD	Qualifier	
Chloride	128	16.0	06/30/2023	ND	416	104	400	3.77		

Cardinal Laboratories

*=Accredited Analyte

PLEASE NOTE: Liability and Damages. Cardinal's liability and client's exclusive remedy for any claim arising, whether based in contract or tort, shall be limited to the amount paid by client for analyses. All claims, including those for negligence and any other cause whatsoever shall be deemed waived unless made in writing and received by Cardinal within thirty (30) days after completion of the applicable service. In no event shall Cardinal be liable for incidental or consequential damages, including, without limitation, business interruptions, loss of use, or loss of profits incurred by client, its subsidiaries, affiliates or successors arising out of or related to the performance of the services hereunder by Cardinal, regardless of whether such claim is based upon any of the above stated reasons or otherwise. Results relate only to the samples identified above. This report shall not be reproduced except in full with written approval of Cardinal Laboratories.

A handwritten signature in black ink, appearing to read "Celey D. Keene".

Celey D. Keene, Lab Director/Quality Manager

PHONE (575) 393-2326 • 101 E. MARLAND • HOBBS, NM 88240

Notes and Definitions

QR-03	The RPD value for the sample duplicate or MS/MSD was outside of QC acceptance limits due to matrix interference. QC batch accepted based on LCS and/or LCSD recovery and/or RPD values.
QM-07	The spike recovery was outside acceptance limits for the MS and/or MSD. The batch was accepted based on acceptable LCS recovery.
ND	Analyte NOT DETECTED at or above the reporting limit
RPD	Relative Percent Difference
**	Samples not received at proper temperature of 6°C or below.
***	Insufficient time to reach temperature.
-	Chloride by SM4500Cl-B does not require samples be received at or below 6°C Samples reported on an as received basis (wet) unless otherwise noted on report

Cardinal Laboratories

*=Accredited Analyte

PLEASE NOTE: Liability and Damages. Cardinal's liability and client's exclusive remedy for any claim arising, whether based in contract or tort, shall be limited to the amount paid by client for analyses. All claims, including those for negligence and any other cause whatsoever shall be deemed waived unless made in writing and received by Cardinal within thirty (30) days after completion of the applicable service. In no event shall Cardinal be liable for incidental or consequential damages, including, without limitation, business interruptions, loss of use, or loss of profits incurred by client, its subsidiaries, affiliates or successors arising out of or related to the performance of the services hereunder by Cardinal, regardless of whether such claim is based upon any of the above stated reasons or otherwise. Results relate only to the samples identified above. This report shall not be reproduced except in full with written approval of Cardinal Laboratories.

A handwritten signature in black ink, appearing to read "Celey D. Keene".

Celey D. Keene, Lab Director/Quality Manager



CHAIN-OF-CUSTODY AND ANALYSIS REQUEST

101 East Marland, Hobbs, NM 88240
(575) 393-2326 FAX (575) 393-2476

Company Name: Ensolum, LLC				BILL TO				ANALYSIS REQUEST																									
Project Manager: Beaux Jennings				P.O. #:																													
Address: 601 N Marienfeld Street, Suite 400				Company: Oxy USA Inc.																													
City: Midland		State: TX		Zip: 79701		Attn: Wade Dittrich																											
Phone #: 210-219-8858		Fax #:		Address:		City:																											
Project #: 05B1417064		Project Owner:		State:		Zip:																											
Project Name: Mesa Verde Bone Spring 046H				Phone #: 575-390-2828																													
Project Location: Luce County, NM				Fax #:																													
Sampler Name: Beaux Jennings																																	
FOR LAB USE ONLY																																	
Lab I.D.	Sample I.D.	Depth (feet)	(G)RAB OR (C)OMP.	# CONTAINERS	GROUNDWATER	WASTEWATER	SOIL	OIL	SLUDGE	OTHER:	ACID/BASE:	ICE / COOL	OTHER:	DATE	TIME	BTEX						TPH						Chloride					
H233391	BG-N	0'-0.5'	G	1			X					X		6/28/23	1320	X	X	X															
1	BG-S	0'-0.5'	G	1											1322																		
2	BG-E	0'-0.5'	G	1											1325																		
3	BG-W	0'-0.5'	G	1											1327	X	X																
4	SLD-3	0'-2'	C	1			X					X		6/28/23	1330			X															
5	NFE BT			6/28/23																													

PLEASE NOTE: Liability and Damages. Cardinal's liability and client's exclusive remedy for any claim arising whether based in contract or tort, shall be limited to the amount paid by the client for the analyses. All claims including those for negligence and any other cause whatsoever shall be deemed waived unless made in writing and received by Cardinal within 30 days after completion of the applicable service. In no event shall Cardinal be liable for incidental or consequential damages, including without limitation, business interruptions, loss of use, or loss of profits incurred by client, its subsidiaries, affiliates or successors arising out of or related to the performance of services hereunder by Cardinal, regardless of whether such claim is based upon any of the above stated reasons or otherwise.

Relinquished By:	Date: 6/30/23	Received By:	Verbal Result: <input type="checkbox"/> Yes <input type="checkbox"/> No	Add'l Phone #:
	Time: 1102		All Results are emailed. Please provide Email address:	
Relinquished By:	Date: 6/30/23	Received By:	REMARKS:	
	Time: 1335			
Delivered By: (Circle One)	Observed Temp. °C: 1.6	Sample Condition: Cool <input checked="" type="checkbox"/> Intact <input checked="" type="checkbox"/>	CHECKED BY: (Initials):	Turnaround Time: Standard <input checked="" type="checkbox"/> Rush <input type="checkbox"/>
Sampler: UPS - Bus - Other:	Corrected Temp. °C: 1.0	Cool <input type="checkbox"/> Yes <input type="checkbox"/> No <input type="checkbox"/> Intact <input type="checkbox"/> Yes <input type="checkbox"/> No <input type="checkbox"/>		Bacteria (only) Sample Condition: Cool <input type="checkbox"/> Intact <input type="checkbox"/> Observed Temp. °C: <input type="checkbox"/> Yes <input type="checkbox"/> No <input type="checkbox"/>
				Thermometer ID #113 Correction Factor -0.5°C
				Corrected Temp. °C:

† Cardinal cannot accept verbal changes. Please email changes to celey.keene@cardinallabsnm.com



APPENDIX F

C-141

District I
1625 N. French Dr., Hobbs, NM 88240
District II
811 S. First St., Artesia, NM 88210
District III
1000 Rio Brazos Road, Aztec, NM 87410
District IV
1220 S. St. Francis Dr., Santa Fe, NM 87505

State of New Mexico
Energy Minerals and Natural
Resources Department

Oil Conservation Division
1220 South St. Francis Dr.
Santa Fe, NM 87505

Form C-141
Revised August 24, 2018
Submit to appropriate OCD District office

Incident ID	nAPP2308945772
District RP	
Facility ID	
Application ID	

Release Notification

Responsible Party

Responsible Party: Oxy USA Inc.	OGRID: 16696
Contact Name: Wade Dittrich	Contact Telephone: 575-390-2828
Contact email: wade_dittrich@oxy.com	Incident # nAPP2308945772
Contact mailing address: PO Box 4294, Houston, TX 77210	

Location of Release Source

Latitude 32.2120

Longitude -103.6843

(NAD 83 in decimal degrees to 5 decimal places)

Site Name: Mesa Verde Bone Spring 046H	Site Type: Drilling/Completion
Date Release Discovered: 11/13/2022	API# 30-025-48816

Unit Letter	Section	Township	Range	County
M	16	24S	32E	Lea

Surface Owner: ☐ State ☒ Federal ☐ Tribal ☐ Private (Name: _____)

Nature and Volume of Release

Material(s) Released (Select all that apply and attach calculations or specific justification for the volumes provided below)

<input type="checkbox"/> Crude Oil	Volume Released (bbls):	Volume Recovered (bbls):
<input type="checkbox"/> Produced Water	Volume Released (bbls):	Volume Recovered (bbls):
	Is the concentration of dissolved chloride in the produced water >10,000 mg/l?	<input type="checkbox"/> Yes <input type="checkbox"/> No
<input type="checkbox"/> Condensate	Volume Released (bbls)	Volume Recovered (bbls)
<input type="checkbox"/> Natural Gas	Volume Released (Mcf)	Volume Recovered (Mcf)
<input checked="" type="checkbox"/> Other (describe): Processed Oil	Volume/Weight Released (provide units): 15 bbls	Volume/Weight Recovered (provide units): 10 bbls

Cause of Release: Human error, frac tank over filled.

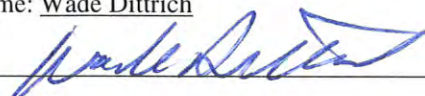
State of New Mexico
Oil Conservation Division

Incident ID	nAPP2308945772
District RP	
Facility ID	
Application ID	

Was this a major release as defined by 19.15.29.7(A) NMAC? <input type="checkbox"/> Yes <input checked="" type="checkbox"/> No	If YES, for what reason(s) does the responsible party consider this a major release?
If YES, was immediate notice given to the OCD? By whom? To whom? When and by what means (phone, email, etc)?	

Initial Response

The responsible party must undertake the following actions immediately unless they could create a safety hazard that would result in injury

<input checked="" type="checkbox"/> The source of the release has been stopped. <input checked="" type="checkbox"/> The impacted area has been secured to protect human health and the environment. <input checked="" type="checkbox"/> Released materials have been contained via the use of berms or dikes, absorbent pads, or other containment devices. <input checked="" type="checkbox"/> All free liquids and recoverable materials have been removed and managed appropriately.	
If all the actions described above have <u>not</u> been undertaken, explain why:	
Per 19.15.29.8 B. (4) NMAC the responsible party may commence remediation immediately after discovery of a release. If remediation has begun, please attach a narrative of actions to date. If remedial efforts have been successfully completed or if the release occurred within a lined containment area (see 19.15.29.11(A)(5)(a) NMAC), please attach all information needed for closure evaluation.	
I hereby certify that the information given above is true and complete to the best of my knowledge and understand that pursuant to OCD rules and regulations all operators are required to report and/or file certain release notifications and perform corrective actions for releases which may endanger public health or the environment. The acceptance of a C-141 report by the OCD does not relieve the operator of liability should their operations have failed to adequately investigate and remediate contamination that pose a threat to groundwater, surface water, human health or the environment. In addition, OCD acceptance of a C-141 report does not relieve the operator of responsibility for compliance with any other federal, state, or local laws and/or regulations.	
Printed Name: <u>Wade Dittrich</u> Signature:  email: <u>wade_dittrich@oxy.com</u>	Title: <u>Environmental Specialist</u> Date: <u>4-3-23</u> Telephone: <u>575-390-2828</u>
<u>OCD Only</u> Received by: _____ Date: _____	

State of New Mexico
Oil Conservation Division

Incident ID	nAPP2308945772
District RP	
Facility ID	
Application ID	

Site Assessment/Characterization

This information must be provided to the appropriate district office no later than 90 days after the release discovery date.

What is the shallowest depth to groundwater beneath the area affected by the release?	N/A (ft bgs)
Did this release impact groundwater or surface water?	<input type="checkbox"/> Yes <input checked="" type="checkbox"/> No
Are the lateral extents of the release within 300 feet of a continuously flowing watercourse or any other significant watercourse?	<input type="checkbox"/> Yes <input checked="" type="checkbox"/> No
Are the lateral extents of the release within 200 feet of any lakebed, sinkhole, or playa lake (measured from the ordinary high-water mark)?	<input type="checkbox"/> Yes <input checked="" type="checkbox"/> No
Are the lateral extents of the release within 300 feet of an occupied permanent residence, school, hospital, institution, or church?	<input type="checkbox"/> Yes <input checked="" type="checkbox"/> No
Are the lateral extents of the release within 500 horizontal feet of a spring or a private domestic fresh water well used by less than five households for domestic or stock watering purposes?	<input type="checkbox"/> Yes <input checked="" type="checkbox"/> No
Are the lateral extents of the release within 1000 feet of any other fresh water well or spring?	<input type="checkbox"/> Yes <input checked="" type="checkbox"/> No
Are the lateral extents of the release within incorporated municipal boundaries or within a defined municipal fresh water well field?	<input type="checkbox"/> Yes <input checked="" type="checkbox"/> No
Are the lateral extents of the release within 300 feet of a wetland?	<input type="checkbox"/> Yes <input checked="" type="checkbox"/> No
Are the lateral extents of the release overlying a subsurface mine?	<input type="checkbox"/> Yes <input checked="" type="checkbox"/> No
Are the lateral extents of the release overlying an unstable area such as karst geology?	<input type="checkbox"/> Yes <input checked="" type="checkbox"/> No
Are the lateral extents of the release within a 100-year floodplain?	<input type="checkbox"/> Yes <input checked="" type="checkbox"/> No
Did the release impact areas not on an exploration, development, production, or storage site?	<input type="checkbox"/> Yes <input checked="" type="checkbox"/> No

Attach a comprehensive report (electronic submittals in .pdf format are preferred) demonstrating the lateral and vertical extents of soil contamination associated with the release have been determined. Refer to 19.15.29.11 NMAC for specifics.

Characterization Report Checklist: *Each of the following items must be included in the report.*

- ☒ Scaled site map showing impacted area, surface features, subsurface features, delineation points, and monitoring wells.
- ☒ Field data
- ☒ Data table of soil contaminant concentration data
- ☒ Depth to water determination
- ☒ Determination of water sources and significant watercourses within ½-mile of the lateral extents of the release
- ☒ Boring or excavation logs
- ☒ Photographs including date and GIS information
- ☒ Topographic/Aerial maps
- ☒ Laboratory data including chain of custody

If the site characterization report does not include completed efforts at remediation of the release, the report must include a proposed remediation plan. That plan must include the estimated volume of material to be remediated, the proposed remediation technique, proposed sampling plan and methods, anticipated timelines for beginning and completing the remediation. The closure criteria for a release are contained in Table 1 of 19.15.29.12 NMAC, however, use of the table is modified by site- and release-specific parameters.

State of New Mexico
Oil Conservation Division

Incident ID	nAPP2308945772
District RP	
Facility ID	
Application ID	

I hereby certify that the information given above is true and complete to the best of my knowledge and understand that pursuant to OCD rules and regulations all operators are required to report and/or file certain release notifications and perform corrective actions for releases which may endanger public health or the environment. The acceptance of a C-141 report by the OCD does not relieve the operator of liability should their operations have failed to adequately investigate and remediate contamination that pose a threat to groundwater, surface water, human health or the environment. In addition, OCD acceptance of a C-141 report does not relieve the operator of responsibility for compliance with any other federal, state, or local laws and/or regulations.

Printed Name: Wade Dittrich

Title: Environmental Specialist

Signature: 

Date: 4-3-23

email: wade_dittrich@oxy.com

Telephone: 575-390-2828

OCD Only

Received by: Shelly Wells

Date: 8/2/2023

State of New Mexico
Oil Conservation Division

Incident ID	nAPP2308945772
District RP	
Facility ID	
Application ID	

Closure

The responsible party must attach information demonstrating they have complied with all applicable closure requirements and any conditions or directives of the OCD. This demonstration should be in the form of a comprehensive report (electronic submittals in .pdf format are preferred) including a scaled site map, sampling diagrams, relevant field notes, photographs of any excavation prior to backfilling, laboratory data including chain of custody documents of final sampling, and a narrative of the remedial activities. Refer to 19.15.29.12 NMAC.

Closure Report Attachment Checklist: *Each of the following items must be included in the closure report.*

- ☒ A scaled site and sampling diagram as described in 19.15.29.11 NMAC
- ☒ Photographs of the remediated site prior to backfill or photos of the liner integrity if applicable (Note: appropriate OCD District office must be notified 2 days prior to liner inspection)
- ☒ Laboratory analyses of final sampling (Note: appropriate ODC District office must be notified 2 days prior to final sampling)
- ☒ Description of remediation activities

I hereby certify that the information given above is true and complete to the best of my knowledge and understand that pursuant to OCD rules and regulations all operators are required to report and/or file certain release notifications and perform corrective actions for releases which may endanger public health or the environment. The acceptance of a C-141 report by the OCD does not relieve the operator of liability should their operations have failed to adequately investigate and remediate contamination that pose a threat to groundwater, surface water, human health or the environment. In addition, OCD acceptance of a C-141 report does not relieve the operator of responsibility for compliance with any other federal, state, or local laws and/or regulations. The responsible party acknowledges they must substantially restore, reclaim, and re-vegetate the impacted surface area to the conditions that existed prior to the release or their final land use in accordance with 19.15.29.13 NMAC including notification to the OCD when reclamation and re-vegetation are complete.

Printed Name: Wade Dittrich

Title: Environmental Advisor

Signature: _____

Date: 8-1-23

email: wade_dittrich@oxy.com

Telephone: 575-390-2828

OCD Only

Received by: Shelly Wells

Date: 8/2/2023

Closure approval by the OCD does not relieve the responsible party of liability should their operations have failed to adequately investigate and remediate contamination that poses a threat to groundwater, surface water, human health, or the environment nor does not relieve the responsible party of compliance with any other federal, state, or local laws and/or regulations.

Closure Approved by: _____

Date: 10/30/2023

Printed Name: _____

Nelson Velez

Title: _____

Environmental Specialist - Adv

Operator did not meet 19.15.29.12D (1a) NMAC. Forbearance given on 10/30/2023. Release resolved.

District I
1625 N. French Dr., Hobbs, NM 88240
Phone:(575) 393-6161 Fax:(575) 393-0720
District II
811 S. First St., Artesia, NM 88210
Phone:(575) 748-1283 Fax:(575) 748-9720
District III
1000 Rio Brazos Rd., Aztec, NM 87410
Phone:(505) 334-6178 Fax:(505) 334-6170
District IV
1220 S. St Francis Dr., Santa Fe, NM 87505
Phone:(505) 476-3470 Fax:(505) 476-3462

State of New Mexico
Energy, Minerals and Natural Resources
Oil Conservation Division
1220 S. St Francis Dr.
Santa Fe, NM 87505

CONDITIONS

Action 246742

CONDITIONS

Operator: OXY USA INC P.O. Box 4294 Houston, TX 772104294	OGRID: 16696
	Action Number: 246742
	Action Type: [C-141] Release Corrective Action (C-141)

CONDITIONS

Created By	Condition	Condition Date
nvelez	Operator did not meet 19.15.29.12D (1a) NMAC. Forbearance given on 10/30/2023. Release resolved.	10/30/2023