



December 20, 2023

District Supervisor  
Oil Conservation Division, District 1  
1625 North French Drive  
Hobbs, New Mexico 88240

**Re: Closure Request  
ConocoPhillips (Heritage COG Operating, LLC)  
Albatross State Com #002H FWKO Release  
Unit Letter B, Section 30, Township 18 South, Range 35 East  
Lea County, New Mexico  
Incident ID# NJXK1606034056**

Sir or Madam:

Tetra Tech, Inc. (Tetra Tech) was contacted by ConocoPhillips Company (ConocoPhillips) to address the comments provided by the New Mexico Oil Conservation Division (NMOCD) for an open incident associated with a historic Heritage COG Operating, LLC (Concho) release at the Albatross State Com #002H free water knockout (FWKO) release site. The approximate release site coordinates are 32.725097°, -103.494593°, located in the Public Land Survey System (PLSS) Unit Letter B, Section 30, Township 18 South, Range 35 East, Lea County, New Mexico (Site). The Site location is shown on Figures 1 and 2. The site is located on State Trust Lands managed by the New Mexico State Land Office (NMSLO).

## BACKGROUND

According to the State of New Mexico C-141 Initial Report, the release was discovered on February 9, 2016. Approximately 20 barrels (bbls) of oil were released due to a failed gasket on a free water knockout (FWKO) unit. A vacuum truck was dispatched to recover any standing fluids, recovering approximately 5 bbls of oil.

The release footprint was located within a lined containment area on the Albatross State Com #002H lease pad (API # 30-025-41544) with some overspray onto the pad and adjacent pasture, as presented in Figure 3. The NMOCD approved the initial C-141 on February 29, 2016, and subsequently assigned the Incident ID NJXK1606034056. The initial C-141 form is included in Appendix A.

## SITE CHARACTERIZATION

A site characterization was performed and no sinkholes, residences, schools, hospitals, institutions, churches, springs, playa lakes, wetlands, incorporated municipal boundaries, subsurface mines, or floodplains are located within the distances specified in 19.15.29.11(A) New Mexico Administrative Code (NMAC). The nearest stream body is located approximately 900 feet northeast of the release extent. The Site is in an area of low karst potential.

According to the New Mexico Office of the State Engineer (NMOSE) reporting system, there are no wells within a ½-mile (800-meter) radius of the Site. The nearest well with groundwater data less than 25 years

Tetra Tech

901 West Wall St., Suite 100, Midland, TX 79701

Tel 432.682.4559 Fax 432.682.3946 www.tetrattech.com

Closure Request  
December 20, 2023

ConocoPhillips

old is located approximately 1.3 miles (2,093 meters) south of the release point. The depth to water at this location (L-15235-POD1) is 75 feet bgs. The site characterization data is included in Appendix B.

## REGULATORY FRAMEWORK

Based upon the release footprint and in accordance with Subsection E of 19.15.29.12 NMAC, per 19.15.29.11 NMAC, the site characterization data was used to determine recommended remedial action levels (RRALs) for benzene, toluene, ethylbenzene, and xylene (collectively referred to as BTEX), total petroleum hydrocarbons (TPH), and chlorides in soil.

Based on the site characterization (lack of current groundwater data within 0.5 miles of the release extent) and in accordance with Table I of 19.15.29.12 NMAC, the RRALs for the Site are as follows:

Constituent	Site RRALs
Chloride	600 mg/kg
TPH (GRO+DRO+ORO)	100 mg/kg
BTEX	50 mg/kg
Benzene	10 mg/kg

## INITIAL RESPONSE AND ASSESSMENT ACTIVITIES

Based on a review of internal Concho documentation, vacuum trucks were dispatched to recover standing fluid from the pasture and lined facility during the initial response. The pasture area was treated with MicroBlaze, a microbial formulation used for bioremediation of hydrocarbons and other organic compounds. Following the application of MicroBlaze, Concho personnel returned to the Site in March 2016 to collect three (3) samples from three (3) locations within the overspray area. Sampling locations are indicated in Figure 4. The results of the March 2016 sampling event are summarized in Table 1. All soil samples were below the reclamation requirements for soils above 4 feet bgs.

A Closure Report that detailed the soil assessment analytical results was drafted by Concho on March 24, 2016. Based on a review of all available documentation, as the result of an oversight, the draft report appears to have never been submitted to the NMOCD. The draft report in its entirety is included in Appendix C.

## 2023 VISUAL SITE INSPECTION

On December 1, 2023, Tetra Tech personnel mobilized to the Site to conduct a visual site inspection and to collect geotagged photographs of the bermed area and release area. The secondary containment was observed to be made up of earthen berms approximately 2 feet tall with an intact polyethylene liner. As mentioned, the release was reported as having been contained within a lined containment area with overspray in the pasture. As documented in the C-141, initial response efforts were reportedly successful in recovering 5 bbls of released fluids.

During the site visit, the liner was observed to have integrity and underlie the secondary containment area. The liner extended up and over the earthen berm and was anchored on the exterior side. No visible signs of a release were observed in the containment area or adjacent pad and pasture. The approximate release point and Site features are presented in Figure 3. Photographic documentation from the Site Visit is presented in Appendix D.

## LINER INTEGRITY

In accordance with 19.15.29.11(A)(5)(a)(ii) NMAC, notification of a liner inspection at the Albatross State Com #002H was provided to the NMOCD via the portal on December 4, 2023. The liner inspection notification email correspondence is included in Appendix E.

Closure Request  
December 20, 2023

ConocoPhillips

On December 7, 2023, Tetra Tech personnel performed an inspection of the liner within the secondary containment of the Albatross State Com #002H Battery. This work was completed to verify liner integrity. The clean base course/gravel material was carefully moved and/or extracted from the area surrounding the production equipment and the surrounding vicinity. The liner was observed to underlie the entirety of the tank battery secondary containment area. The liner was intact with no visible rips or tears and encompassed by a 2-foot-tall earthen berm. The liner extended up and over the berm and was anchored on the exterior. At the time of the inspection, the liner was intact and had the ability to contain the leak in question. Photographic documentation of the liner inspection is included in Appendix D.

## 2023 ADDITIONAL ASSESSMENT ACTIVITIES

While onsite to complete the liner inspection, Tetra Tech personnel conducted additional assessment activities in order to complete horizontal delineation of the release extent in accordance with 19.15.29 NMAC. A total of five hand auger borings (H-1 through H-5) were installed to 1 foot bgs each along the perimeter of the liner facility and/or release extent to complete horizontal delineation. The sampling locations are presented in Figure 5.

A total of five (5) samples were collected and submitted to Cardinal Laboratories in Hobbs, New Mexico to be analyzed for chlorides via Standard Method 4500-Cl, TPH via EPA Method 8015M, and BTEX via EPA Method 8021B. A copy of the analytical laboratory report and chain-of-custody documentation are included in Appendix F.

Results from the December 2023 soil sampling event are summarized in Table 1. All analytical results were below the Site RRALs for all constituents.

## CONCLUSION

ConocoPhillips respectfully requests closure of the release based on the 2016 sampling and initial response actions conducted by Concho, as well as the 2023 liner inspection, visual inspection of the reported release area, and analytical results. The release predominantly occurred within a lined containment area. The affected area of the liner has been visually inspected where the release occurred, and the liner remains intact and had the ability to contain the release in question. All soil sampling results from the reported overspray area in pasture, as well as on pad on the outer perimeter of the lined facility, were below the most stringent Table I concentrations for all constituents of concern.

If you have any questions regarding this information, please call me at (512) 739-7874 or Christian at (512) 288-6281.

Sincerely,  
**Tetra Tech, Inc.**



Samantha K. Abbott, P.G.  
Project Manager



Christian M. Llull, P.G.  
Program Manager

cc:  
Mr. Moises Cantu Garcia, GPBU - ConocoPhillips

Closure Request  
December 20, 2023

ConocoPhillips

## LIST OF ATTACHMENTS

### Figures:

- Figure 1 – Overview Map
- Figure 2 – Topographic Map
- Figure 3 – Approximate Release Point and Site Features
- Figure 4 – Approximate Overspray Area and Assessment
- Figure 5 – Liner Inspection and Additional Assessment

### Tables:

- Table 1 – Summary of Analytical Results – Soil Assessment

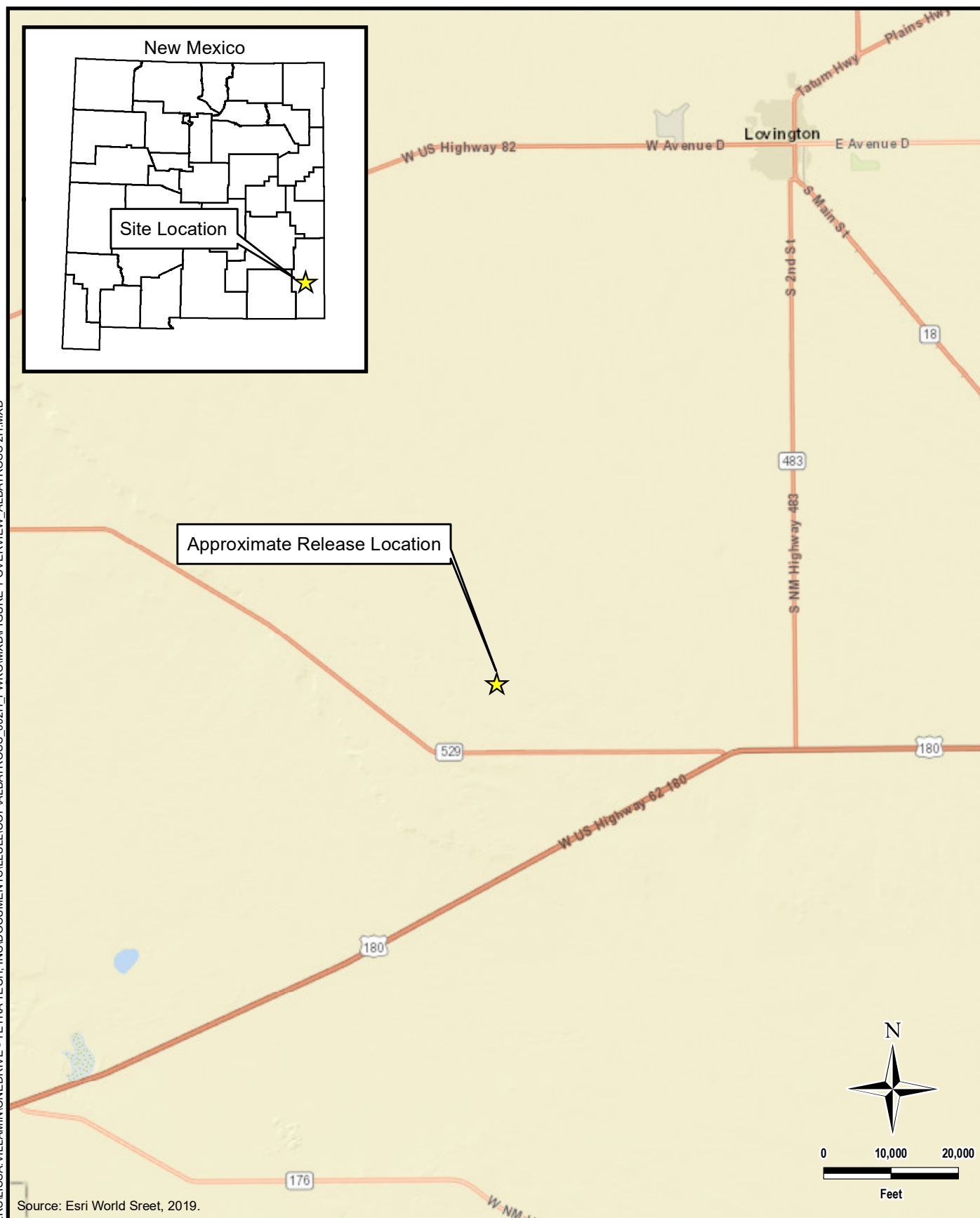
### Appendices:

- Appendix A – Initial C-141 Form
- Appendix B – Site Characterization Data
- Appendix C – Draft Closure Report (Concho, 2016)
- Appendix D – Photographic Documentation
- Appendix E – Regulatory Correspondence
- Appendix F – Laboratory Analytical Data



## **FIGURES**

DOCUMENT PATH: C:\USERS\LISSA.VILLAMINIONEDRIVE - TETRA TECH, INC\DOCUMENTS\ILLULLICOP\ALBATROSS 002H FWK\IMXD\FIGURE 1 OVERVIEW ALBATROSS 2H.MXD



Source: Esri World Sreet, 2019.



**TETRA TECH**

[www.tetrattech.com](http://www.tetrattech.com)

901 West Wall Street, Suite 100  
Midland, Texas 79701  
Phone: (432) 682-4559  
Fax: (432) 682-3946

**CONOCOPHILLIPS**

NJXK1606034056  
LEA COUNTY, NEW MEXICO  
(32.725502°, -103.4947205°)

**ALBATROSS STATE COM #002H FWKO RELEASE  
OVERVIEW MAP**

PROJECT NO.: 212C-MD-03289

DATE: DECEMBER 04, 2023

DESIGNED BY: LMV

Figure No.

1

DOCUMENT PATH: C:\USERS\ISSA.VILLAMONEDRIVE - TETRA TECH\INC\DOCUMENTS\ILLICOPALBATROSS\_002H\_FWKO\MXD\FIGURE 2 TOPO\_ALBATROSS 2H.MXD

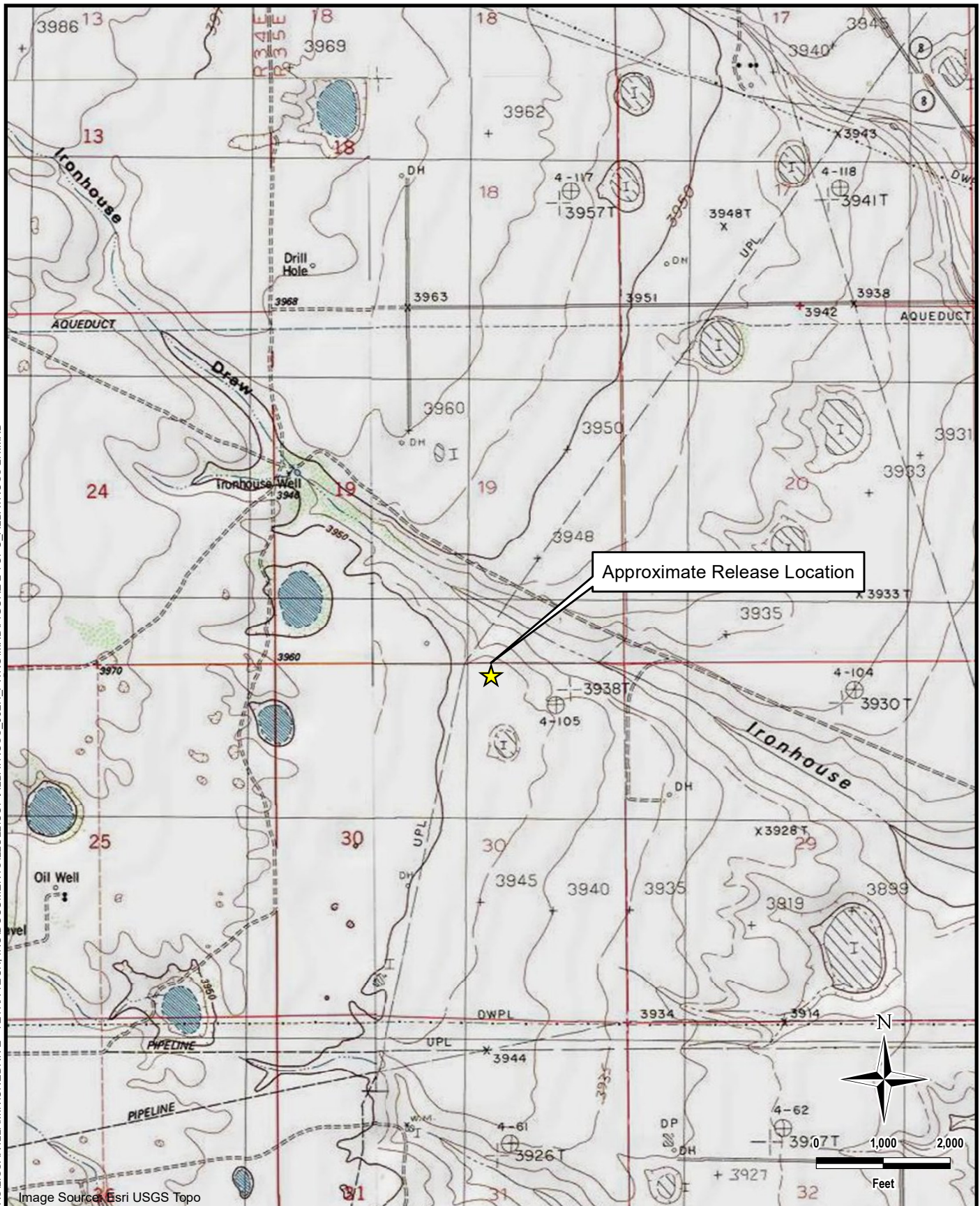


Image Source: Esri USGS Topo

**TETRA TECH**

www.tetrattech.com

901 West Wall Street, Suite 100  
Midland, Texas 79701  
Phone: (432) 682-4559  
Fax: (432) 682-3946

**CONOCOPHILLIPS**

NJXK1606034056  
LEA COUNTY, NEW MEXICO  
(32.725502°, -103.4947205°)

**ALBATROSS STATE COM #002H FWKO RELEASE  
TOPOGRAPHIC MAP**

PROJECT NO.: 212C-MD-03289

DATE: DECEMBER 04, 2023

DESIGNED BY: LMV

Figure No.

**2**

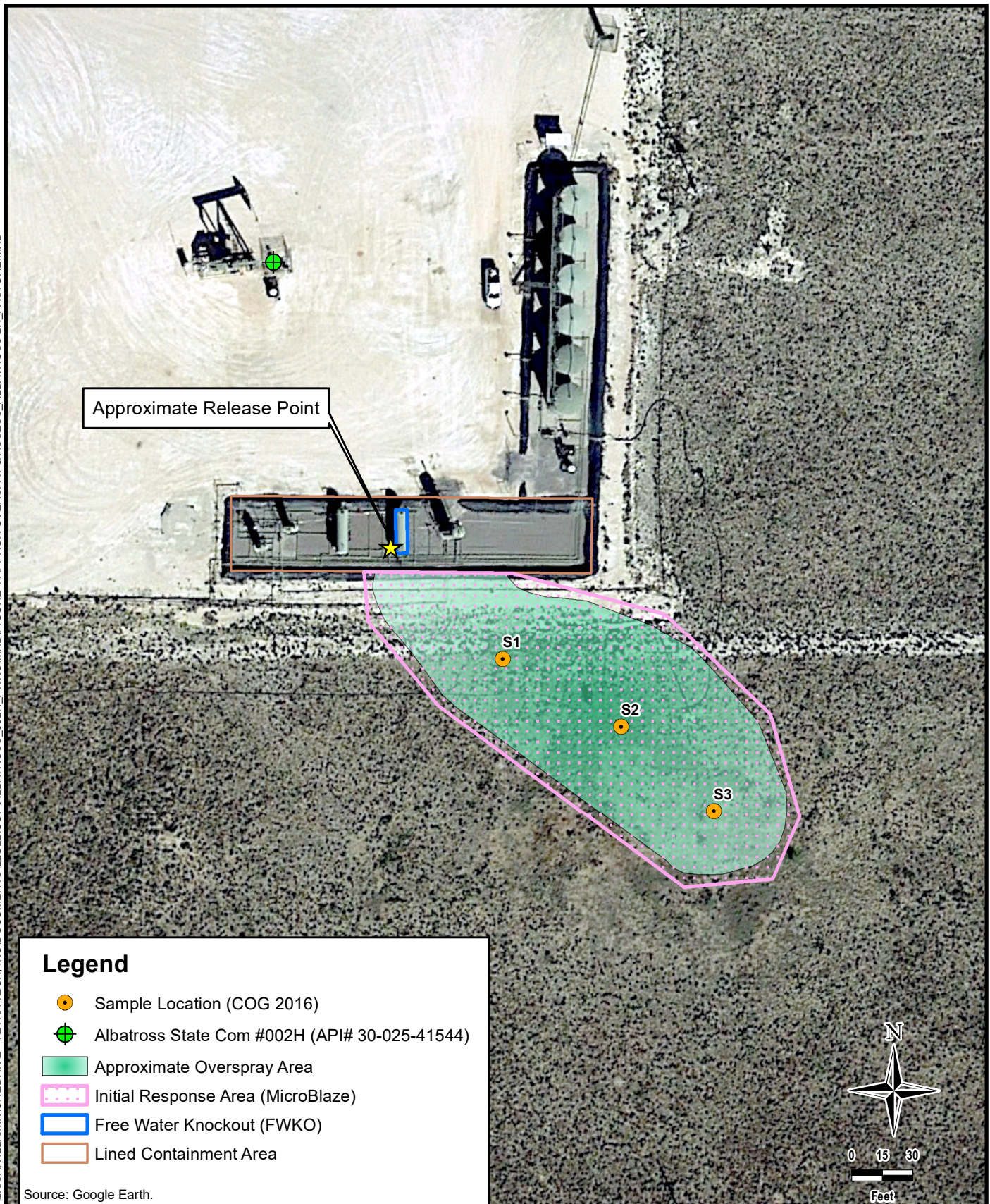


DOCUMENT PATH: C:\USERS\LISSA.VILLAMONEDRIVE - TETRA TECH\INC\DOCUMENTS\ILLINOIS\ALBATROSS\_002H\_FWKOMXD\FIGURE 3 RELEASE PT. & FEATURES\_ALBATROSS 2H.MXD





DOCUMENT PATH: C:\USERS\LISSA.VILLAMINONEDRIVE - TETRA TECH\INC\DOCUMENTS\ILL\COPIALBATROSS\_002H\_FWKO\MXD\FIGURE 4 APPROX OVERSPAY &amp; ASSESS\_ALBATROSS 2H\_PASTURE.MXD

**TETRA TECH**

www.tetrattech.com

901 West Wall Street, Suite 100  
Midland, Texas 79701  
Phone: (432) 682-4559  
Fax: (432) 682-3946

**CONOCOPHILLIPS**

NJXK1606034056  
LEA COUNTY, NEW MEXICO  
(32.725502°, -103.4947205°)

**ALBATROSS STATE COM #002H FWKO RELEASE  
APPROXIMATE OVERSPRAY AREA AND ASSESSMENT**

PROJECT NO.: 212C-MD-03289

DATE: DECEMBER 06, 2023

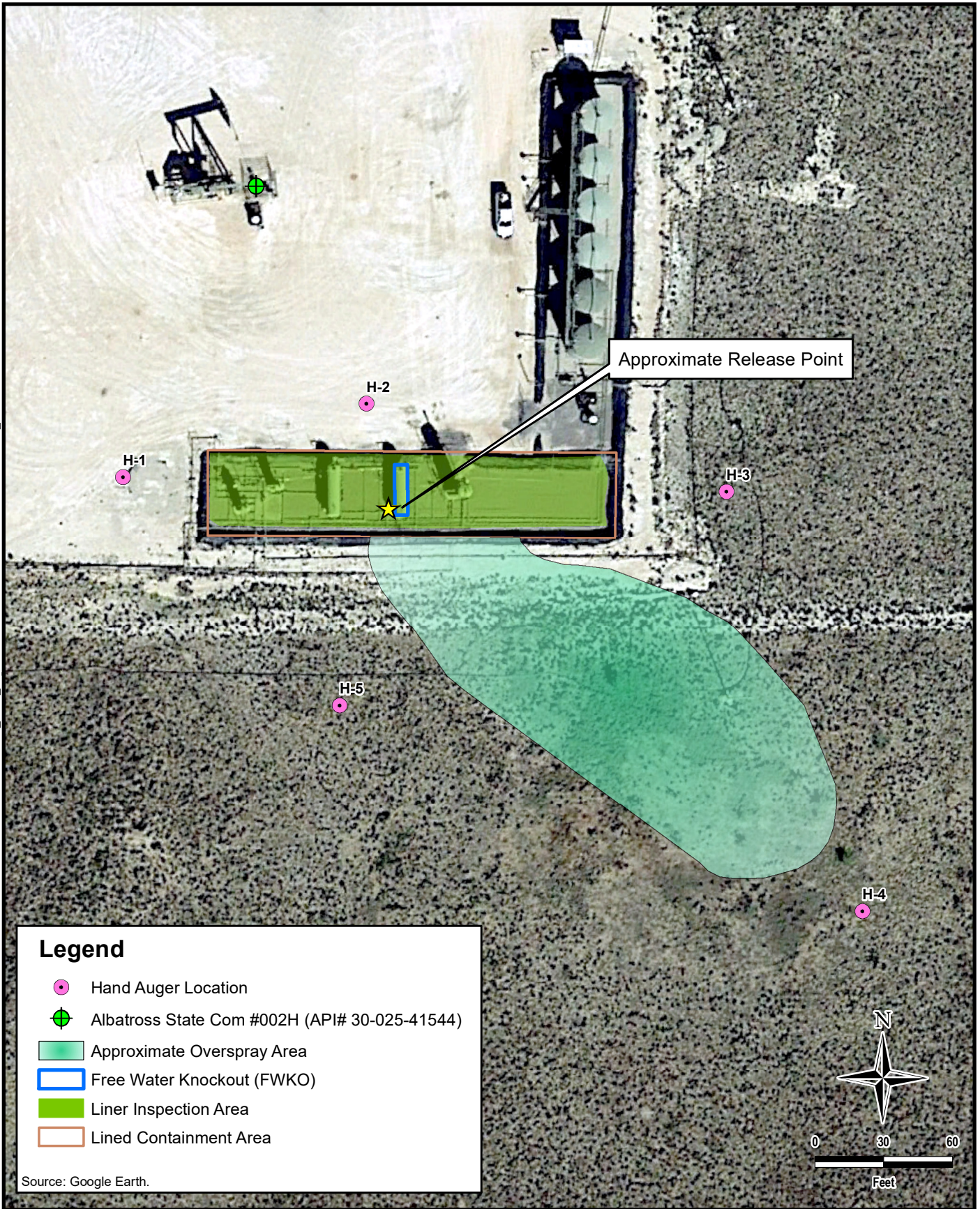
DESIGNED BY: LMV

Figure No.

**4**



DOCUMENT PATH: C:\USERS\LISSA.VILLAMINIONEDRIVE - TETRA TECH, INC\DOCUMENTS\ILLULLICOPALBATROSS\_002H\_FWKO\MXD\FIGURE 5 LINER INSPECT & ASSESS\_ALBATROSS 2H.MXD



**TETRA TECH**

[www.tetrattech.com](http://www.tetrattech.com)

901 West Wall Street, Suite 100  
Midland, Texas 79701  
Phone: (432) 682-4559  
Fax: (432) 682-3946

**CONOCOPHILLIPS**

NJXK1606034056  
LEA COUNTY, NEW MEXICO  
(32.725502°, -103.4947205°)

**ALBATROSS STATE COM #002H FWKO RELEASE  
LINER INSPECTION AND ADDITIONAL ASSESSMENT**

PROJECT NO.: 212C-MD-03289

DATE: DECEMBER 15, 2023

DESIGNED BY: LMV

Figure No.

**5**



## **TABLES**

TABLE 1  
SUMMARY OF ANALYTICAL RESULTS  
SOIL ASSESSMENT- NJXK1606034056  
CONOCOPHILLIPS  
(HERITAGE COG OPERATING, LLC)  
ALBATROSS STATE COM #002H  
LEA COUNTY, NM

Sample ID	Sample Date	Sample Depth	Chloride		BTEX <sup>2</sup>										TPH <sup>3</sup>							
					Benzene		Toluene		Ethylbenzene		Total Xylenes		Total BTEX		GRO		DRO		EXT DRO		Total TPH (GRO+DRO+EXT DRO)	
															C <sub>6</sub> - C <sub>10</sub>		> C <sub>10</sub> - C <sub>28</sub>		> C <sub>28</sub> - C <sub>36</sub>			
					mg/kg	Q	mg/kg	Q	mg/kg	Q	mg/kg	Q	mg/kg	Q	mg/kg	Q	mg/kg	Q	mg/kg	Q		mg/kg
S1	3/2/2016	SURFACE	<16.0		<0.050		<0.050		<0.050		<0.150		<0.300		<10.0		<10.0		<10.0		<10.0	
S2	3/2/2016	SURFACE	<16.0		<0.050		<0.050		<0.050		<0.150		<0.300		<10.0		<10.0		<10.0		<10.0	
S3	3/2/2016	SURFACE	<16.0		<0.050		0.061		<0.050		<0.150		<0.300		<10.0		<10.0		<10.0		<10.0	
H-1	12/7/2023	0-1	32		<0.050		<0.050		<0.050		<0.150		<0.300		<10.0		<10.0		<10.0		<10.0	
H-2	12/7/2023	0-1	<16.0		<0.050		<0.050		<0.050		<0.150		<0.300		<10.0		<10.0		<10.0		<10.0	
H-3	12/7/2023	0-1	<16.0		<0.050		<0.050		<0.050		<0.150		<0.300		<10.0		<10.0		<10.0		<10.0	
H-4	12/7/2023	0-1	<16.0		<0.050		<0.050		<0.050		<0.150		<0.300		<10.0		<10.0		<10.0		<10.0	
H-5	12/7/2023	0-1	32		<0.050		<0.050		<0.050		<0.150		<0.300		<10.0		<10.0		<10.0		<10.0	

- NOTES:
- ft. Feet
  - bgs Below ground surface
  - mg/kg Milligrams per kilogram
  - TPH Total Petroleum Hydrocarbons
  - GRO Gasoline range organics
  - DRO Diesel range organics
  - 1 Method SM4500CI-B
  - 2 Method 8021B
  - 3 Method 8015M



## **APPENDIX A C-141**

**RECEIVED**

District I  
1625 N. French Dr., Hobbs, NM 88240  
District II  
811 S. First St., Artesia, NM 88210  
District III  
1000 Rio Brazos Road, Aztec, NM 87410  
District IV  
1220 S. St. Francis Dr., Santa Fe, NM 87505

State of New Mexico  
Energy Minerals and Natural Resources

Oil Conservation Division  
1220 South St. Francis Dr.  
Santa Fe, NM 87505

By JKeyes at 9:30 am, Feb 29, 2016

Revised August 8, 2011

Submit 1 Copy to appropriate District Office in  
accordance with 19.15.29 NMAC.

**Release Notification and Corrective Action****OPERATOR**
☒ Initial Report ☐ Final Report

Name of Company: COG Operating LLC	Contact: Robert McNeill
Address: 600 West Illinois Avenue, Midland TX 79701	Telephone No. 432-230-0077
Facility Name: ALBATROSS STATE COM #002H	Facility Type: Battery
Surface Owner:	Mineral Owner: State
API No. 30-025-41544	

**LOCATION OF RELEASE**

Unit Letter	Section	Township	Range	Feet from the	North/South Line	Feet from the	East/West Line	County
B	30	18S	35E	190'	North	1980'	East	Lea

Latitude 32.725502 Longitude -103.4947205

**NATURE OF RELEASE**

Type of Release: Oil	Volume of Release: 20 bbls	Volume Recovered: 5 bbls
Source of Release: Gasket	Date and Hour of Occurrence: 2/9/2016 11:00 am	Date and Hour of Discovery: 2/9/2016 11:00 am
Was Immediate Notice Given? <input type="checkbox"/> Yes <input type="checkbox"/> No <input checked="" type="checkbox"/> Not Required	If YES, To Whom?	
By Whom?	Date and Hour:	
Was a Watercourse Reached? <input type="checkbox"/> Yes <input checked="" type="checkbox"/> No	If YES, Volume Impacting the Watercourse.	

If a Watercourse was Impacted, Describe Fully.\*

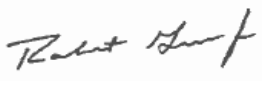

Describe Cause of Problem and Remedial Action Taken.\*

This release was caused when a gasket on failed on a FWKO. Vacuum trucks were dispatched to recover the standing fluid.

Describe Area Affected and Cleanup Action Taken.\*

The release occurred within a lined containment. A spray of oil misted over the pad and nearby pasture. Concho will have the spill site sampled to delineate any possible contamination from the release and we will present a remediation work plan to the NMOCD for approval prior to any significant remediation work.

I hereby certify that the information given above is true and complete to the best of my knowledge and understand that pursuant to NMOCD rules and regulations all operators are required to report and/or file certain release notifications and perform corrective actions for releases which may endanger public health or the environment. The acceptance of a C-141 report by the NMOCD marked as "Final Report" does not relieve the operator of liability should their operations have failed to adequately investigate and remediate contamination that pose a threat to ground water, surface water, human health or the environment. In addition, NMOCD acceptance of a C-141 report does not relieve the operator of responsibility for compliance with any other federal, state, or local laws and/or regulations.

Signature: 		<b>OIL CONSERVATION DIVISION</b>	
Printed Name: Robert Grubbs		Approved by Environmental Specialist: 	
Title: Senior Environmental Coordinator		Approval Date: 02/29/2016	Expiration Date: 04/29/2016
E-mail Address: rgrubbs@concho.com		Conditions of Approval:	
Date: February 23, 2016		Discrete site samples only. Delineate and remediate per NMOCD guidelines.	
Phone: 432-230-0077		Attached <input type="checkbox"/> IRP 4194	

\* Attach Additional Sheets If Necessary

nJXK1606034056  
pJXK1606034142

Incident ID	
District RP	
Facility ID	
Application ID	

## Site Assessment/Characterization

*This information must be provided to the appropriate district office no later than 90 days after the release discovery date.*

What is the shallowest depth to groundwater beneath the area affected by the release?	_____ (ft bgs)
Did this release impact groundwater or surface water?	<input type="checkbox"/> Yes <input type="checkbox"/> No
Are the lateral extents of the release within 300 feet of a continuously flowing watercourse or any other significant watercourse?	<input type="checkbox"/> Yes <input type="checkbox"/> No
Are the lateral extents of the release within 200 feet of any lakebed, sinkhole, or playa lake (measured from the ordinary high-water mark)?	<input type="checkbox"/> Yes <input type="checkbox"/> No
Are the lateral extents of the release within 300 feet of an occupied permanent residence, school, hospital, institution, or church?	<input type="checkbox"/> Yes <input type="checkbox"/> No
Are the lateral extents of the release within 500 horizontal feet of a spring or a private domestic fresh water well used by less than five households for domestic or stock watering purposes?	<input type="checkbox"/> Yes <input type="checkbox"/> No
Are the lateral extents of the release within 1000 feet of any other fresh water well or spring?	<input type="checkbox"/> Yes <input type="checkbox"/> No
Are the lateral extents of the release within incorporated municipal boundaries or within a defined municipal fresh water well field?	<input type="checkbox"/> Yes <input type="checkbox"/> No
Are the lateral extents of the release within 300 feet of a wetland?	<input type="checkbox"/> Yes <input type="checkbox"/> No
Are the lateral extents of the release overlying a subsurface mine?	<input type="checkbox"/> Yes <input type="checkbox"/> No
Are the lateral extents of the release overlying an unstable area such as karst geology?	<input type="checkbox"/> Yes <input type="checkbox"/> No
Are the lateral extents of the release within a 100-year floodplain?	<input type="checkbox"/> Yes <input type="checkbox"/> No
Did the release impact areas <b>not</b> on an exploration, development, production, or storage site?	<input type="checkbox"/> Yes <input type="checkbox"/> No

Attach a comprehensive report (electronic submittals in .pdf format are preferred) demonstrating the lateral and vertical extents of soil contamination associated with the release have been determined. Refer to 19.15.29.11 NMAC for specifics.

### **Characterization Report Checklist:** *Each of the following items must be included in the report.*

- ☐ Scaled site map showing impacted area, surface features, subsurface features, delineation points, and monitoring wells.
- ☐ Field data
- ☐ Data table of soil contaminant concentration data
- ☐ Depth to water determination
- ☐ Determination of water sources and significant watercourses within ½-mile of the lateral extents of the release
- ☐ Boring or excavation logs
- ☐ Photographs including date and GIS information
- ☐ Topographic/Aerial maps
- ☐ Laboratory data including chain of custody

If the site characterization report does not include completed efforts at remediation of the release, the report must include a proposed remediation plan. That plan must include the estimated volume of material to be remediated, the proposed remediation technique, proposed sampling plan and methods, anticipated timelines for beginning and completing the remediation. The closure criteria for a release are contained in Table 1 of 19.15.29.12 NMAC, however, use of the table is modified by site- and release-specific parameters.

State of New Mexico  
Oil Conservation Division

Page 4

Incident ID	
District RP	
Facility ID	
Application ID	

I hereby certify that the information given above is true and complete to the best of my knowledge and understand that pursuant to OCD rules and regulations all operators are required to report and/or file certain release notifications and perform corrective actions for releases which may endanger public health or the environment. The acceptance of a C-141 report by the OCD does not relieve the operator of liability should their operations have failed to adequately investigate and remediate contamination that pose a threat to groundwater, surface water, human health or the environment. In addition, OCD acceptance of a C-141 report does not relieve the operator of responsibility for compliance with any other federal, state, or local laws and/or regulations.

Printed Name: \_\_\_\_\_ Title: \_\_\_\_\_

Signature: Moises H Cantu Garcia Date: \_\_\_\_\_

email: \_\_\_\_\_ Telephone: \_\_\_\_\_

**OCD Only**

Received by: \_\_\_\_\_ Date: \_\_\_\_\_

Incident ID	
District RP	
Facility ID	
Application ID	

## Closure

The responsible party must attach information demonstrating they have complied with all applicable closure requirements and any conditions or directives of the OCD. This demonstration should be in the form of a comprehensive report (electronic submittals in .pdf format are preferred) including a scaled site map, sampling diagrams, relevant field notes, photographs of any excavation prior to backfilling, laboratory data including chain of custody documents of final sampling, and a narrative of the remedial activities. Refer to 19.15.29.12 NMAC.

**Closure Report Attachment Checklist: Each of the following items must be included in the closure report.**

- ☐ A scaled site and sampling diagram as described in 19.15.29.11 NMAC
- ☐ Photographs of the remediated site prior to backfill or photos of the liner integrity if applicable (Note: appropriate OCD District office must be notified 2 days prior to liner inspection)
- ☐ Laboratory analyses of final sampling (Note: appropriate ODC District office must be notified 2 days prior to final sampling)
- ☐ Description of remediation activities

I hereby certify that the information given above is true and complete to the best of my knowledge and understand that pursuant to OCD rules and regulations all operators are required to report and/or file certain release notifications and perform corrective actions for releases which may endanger public health or the environment. The acceptance of a C-141 report by the OCD does not relieve the operator of liability should their operations have failed to adequately investigate and remediate contamination that pose a threat to groundwater, surface water, human health or the environment. In addition, OCD acceptance of a C-141 report does not relieve the operator of responsibility for compliance with any other federal, state, or local laws and/or regulations. The responsible party acknowledges they must substantially restore, reclaim, and re-vegetate the impacted surface area to the conditions that existed prior to the release or their final land use in accordance with 19.15.29.13 NMAC including notification to the OCD when reclamation and re-vegetation are complete.

Printed Name: \_\_\_\_\_ Title: \_\_\_\_\_

Signature: Moises H Cantu Garcia Date: \_\_\_\_\_

email: \_\_\_\_\_ Telephone: \_\_\_\_\_

**OCD Only**

Received by: \_\_\_\_\_ Date: \_\_\_\_\_

Closure approval by the OCD does not relieve the responsible party of liability should their operations have failed to adequately investigate and remediate contamination that poses a threat to groundwater, surface water, human health, or the environment nor does not relieve the responsible party of compliance with any other federal, state, or local laws and/or regulations.

Closure Approved by: \_\_\_\_\_ Date: \_\_\_\_\_

Printed Name: \_\_\_\_\_ Title: \_\_\_\_\_

## **APPENDIX B**

### **Site Characterization Data**

# OCD Land Ownership



11/13/2023, 11:14:23 AM

Mineral Ownership

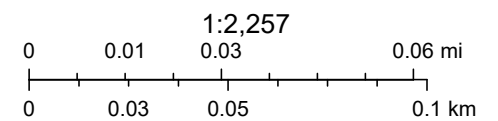
Land Ownership



N-No minerals are owned by the U.S.



S



U.S. BLM, Maxar, Microsoft, Esri, HERE, Garmin, iPC



# National Flood Hazard Layer FIRMMette



103°30'W 32°43'47"N



0 250 500 1,000 1,500 2,000 Feet

1:6,000

103°29'22"W 32°43'17"N

Released to Imaging: 12/26/2023 12:00:51 PM

Basemap Imagery Source: USGS National Map 2023

## Legend

SEE FIS REPORT FOR DETAILED LEGEND AND INDEX MAP FOR FIRM PANEL LAYOUT

SPECIAL FLOOD HAZARD AREAS		Without Base Flood Elevation (BFE) Zone A, V, A99
		With BFE or Depth Zone AE, AO, AH, VE, AR
		Regulatory Floodway
OTHER AREAS OF FLOOD HAZARD		0.2% Annual Chance Flood Hazard, Areas of 1% annual chance flood with average depth less than one foot or with drainage areas of less than one square mile Zone X
		Future Conditions 1% Annual Chance Flood Hazard Zone X
		Area with Reduced Flood Risk due to Levee. See Notes. Zone X
		Area with Flood Risk due to Levee Zone D
OTHER AREAS		NO SCREEN Area of Minimal Flood Hazard Zone X
		Effective LOMRs
		Area of Undetermined Flood Hazard Zone D
GENERAL STRUCTURES		Channel, Culvert, or Storm Sewer
		Levee, Dike, or Floodwall
OTHER FEATURES		Cross Sections with 1% Annual Chance Water Surface Elevation
		Water Surface Elevation
		Coastal Transect
		Base Flood Elevation Line (BFE)
		Limit of Study
		Jurisdiction Boundary
		Coastal Transect Baseline
		Profile Baseline
MAP PANELS		Digital Data Available
		No Digital Data Available
		Unmapped



The pin displayed on the map is an approximate point selected by the user and does not represent an authoritative property location.

This map complies with FEMA's standards for the use of digital flood maps if it is not void as described below. The basemap shown complies with FEMA's basemap accuracy standards

The flood hazard information is derived directly from the authoritative NFHL web services provided by FEMA. This map was exported on **11/13/2023 at 12:08 PM** and does not reflect changes or amendments subsequent to this date and time. The NFHL and effective information may change or become superseded by new data over time.

This map image is void if the one or more of the following map elements do not appear: basemap imagery, flood zone labels, legend, scale bar, map creation date, community identifiers, FIRM panel number, and FIRM effective date. Map images for unmapped and unmodernized areas cannot be used for regulatory purposes.

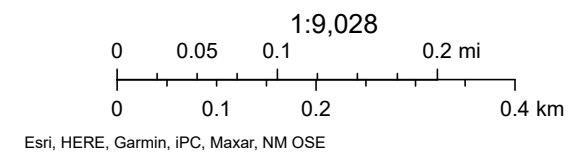


## OCD Waterbodies



11/13/2023, 11:18:27 AM

— OSE Streams



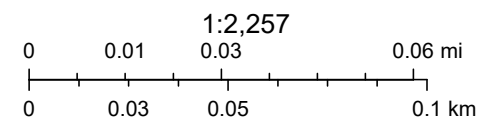
## OCD Karst Areas



11/13/2023, 11:13:08 AM

Karst Occurrence Potential

Low



BLM, OCD, New Mexico Tech, Maxar, Microsoft, Esri, HERE, Garmin, iPC





# New Mexico Office of the State Engineer

## Water Column/Average Depth to Water

(A CLW##### in the POD suffix indicates the POD has been replaced & no longer serves a water right file.)

(R=POD has been replaced, O=orphaned, C=the file is closed)

(quarters are 1=NW 2=NE 3=SW 4=SE)

(quarters are smallest to largest)

(NAD83 UTM in meters)

(In feet)

POD Number	POD Sub-Code	basin	County	Q 64	Q 16	Q 4	Sec	Tws	Rng	X	Y	Distance	Depth Well	Depth Water	Water Column
<a href="#">L 04562</a>	L	LE		3	1	29	18S	35E		641874	3621315*	945	156	95	61
<a href="#">L 07928</a>	L	LE		4	4	1	19	18S	35E	640639	3622915	1183	175		
<a href="#">L 12926 POD1</a>	L	LE		2	2	3	25	18S	34E	639839	3621631	1244	182	117	65
<a href="#">L 03888</a>	L	LE		3	1	19	18S	35E		640253	3622912*	1369	107	70	37
<a href="#">L 02053</a>	L	LE					20	18S	35E	642464	3622723*	1663	175	78	97
<a href="#">L 15235 POD1</a>	L	LE		2	4	1	31	18S	35E	640696	3619795	2052	162	75	87
<a href="#">L 03171</a>	L	LE		3	3	17	18S	35E		641835	3623734*	2067	170	150	20
<a href="#">L 03721</a>	L	LE		3	3	18	18S	35E		640241	3623717*	2076	161	90	71
<a href="#">L 02357</a>	L	LE			2	20	18S	35E		642855	3623137*	2221	170	77	93

Average Depth to Water: **94 feet**

Minimum Depth: **70 feet**

Maximum Depth: **150 feet**

Record Count: 9

**UTM NAD83 Radius Search (in meters):**

**Easting (X):** 641070.999

**Northing (Y):** 3621813.282

**Radius:** 2400

\*UTM location was derived from PLSS - see Help

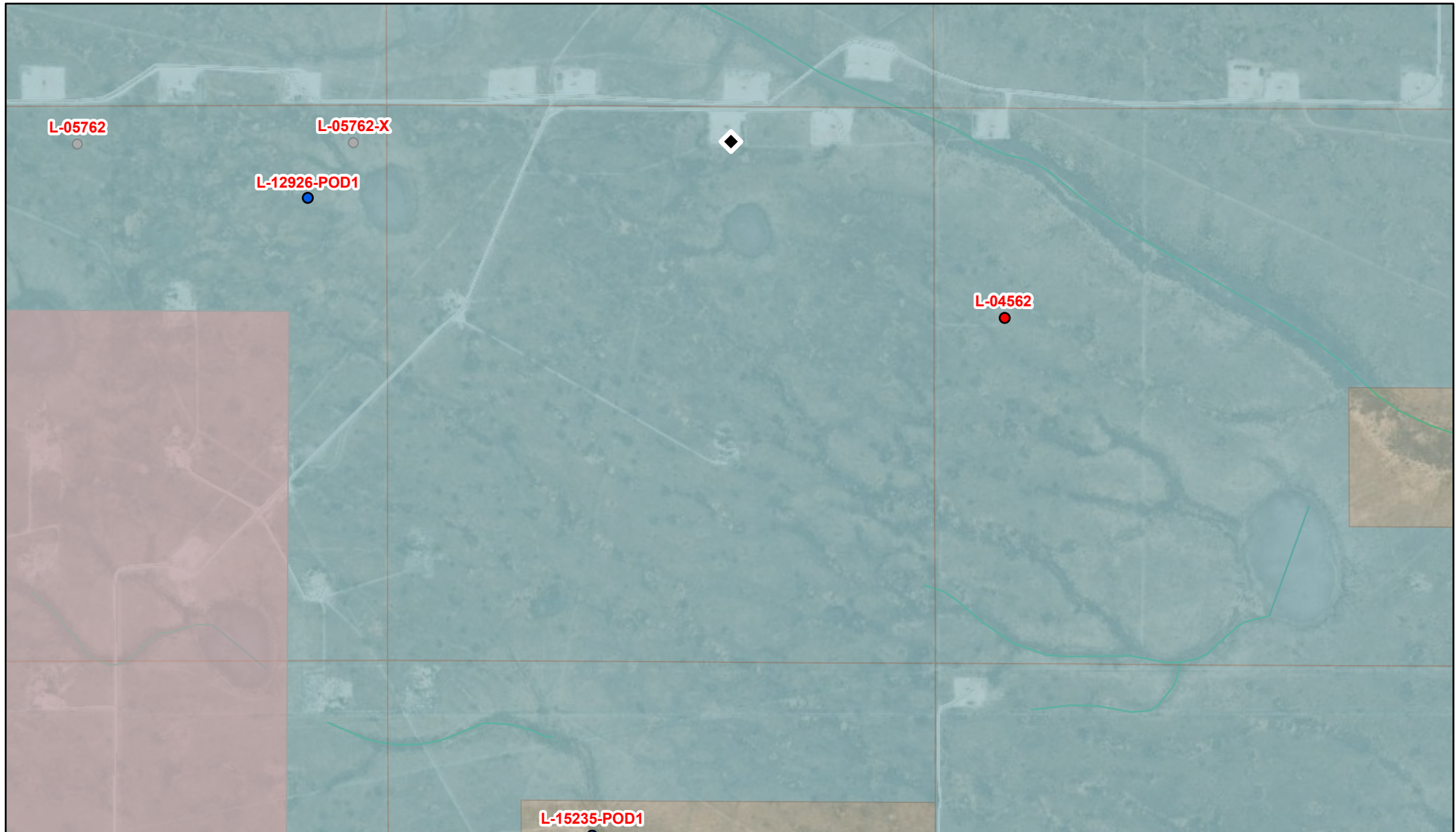
The data is furnished by the NMOSE/ISC and is accepted by the recipient with the expressed understanding that the OSE/ISC make no warranties, expressed or implied, concerning the accuracy, completeness, reliability, usability, or suitability for any particular purpose of the data.

12/18/23 12:22 PM

Page 1 of 1

WATER COLUMN/ AVERAGE  
DEPTH TO WATER

## OSE POD Location Map



12/18/2023, 1:10:36 PM

## GIS WATERS PODs

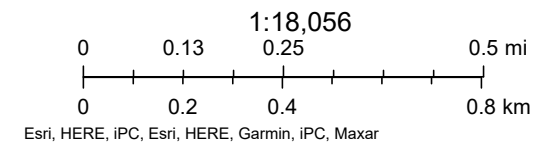
- Active
- Plugged
- 

## Water Right Regulations

- Critical Management Area - Guidelines
- Closure Area
- New Mexico State Trust Lands

## NHD Flowlines

- Artificial Path
- Stream River





# New Mexico Office of the State Engineer

## Point of Diversion Summary

		(quarters are 1=NW 2=NE 3=SW 4=SE)							
		(quarters are smallest to largest)				(NAD83 UTM in meters)			
<b>Well Tag</b>	<b>POD Number</b>	<b>Q64</b>	<b>Q16</b>	<b>Q4</b>	<b>Sec</b>	<b>Tws</b>	<b>Rng</b>	<b>X</b>	<b>Y</b>
20FAF	L 15235 POD1	2	4	1	31	18S	35E	640696	3619795

---

x

<b>Driller License:</b>	1626	<b>Driller Company:</b>	TAYLOR DRILLING
<b>Driller Name:</b>	TAYLOR, ROY		
<b>Drill Start Date:</b>	11/18/2021	<b>Drill Finish Date:</b>	11/18/2021
<b>Log File Date:</b>	12/07/2021	<b>PCW Rev Date:</b>	
<b>Pump Type:</b>		<b>Pipe Discharge Size:</b>	
<b>Casing Size:</b>	5.14	<b>Depth Well:</b>	162 feet
		<b>Plug Date:</b>	
		<b>Source:</b>	Shallow
		<b>Estimated Yield:</b>	0 GPM
		<b>Depth Water:</b>	75 feet

---

x

<b>Water Bearing Stratifications:</b>	<b>Top</b>	<b>Bottom</b>	<b>Description</b>
	74	122	Sandstone/Gravel/Conglomerate
	122	158	Sandstone/Gravel/Conglomerate

---

x

<b>Casing Perforations:</b>	<b>Top</b>	<b>Bottom</b>
	122	162

---

x

The data is furnished by the NMOSE/ISC and is accepted by the recipient with the expressed understanding that the OSE/ISC make no warranties, expressed or implied, concerning the accuracy, completeness, reliability, usability, or suitability for any particular purpose of the data.

12/18/23 11:39 AM

POINT OF DIVERSION SUMMARY

## **APPENDIX C**

### **Draft Closure Report (Concho, 2016)**



**Robert Grubbs**  
Sr. Environmental Coordinator

March 24, 2016

Oil Conservation Division  
District 1 – Hobbs  
1625 N. French Drive  
Hobbs, New Mexico 88240

**Re: Albatross State Com #2H**  
**30-025-41544**  
**SEC.30-T18S-R35E**  
**Lea, NM**

Mr. Jaimie Keyes,

COG Operating LLC would like to submit for your consideration the enclosed closure request for the above captioned well. The request is in response to the C-141 Initial report dated February 23, 2016.

This release was caused by a gasket failure on a fresh water knock out resulting in the release of 20 barrels of oil of which 5 barrels of oil was recovered. This release was mostly contained with the lined containment of the facility, however, overspray misted the pasture south east of the location. The area impacted in the pasture was approximately 0.39 acres. Vacuum trucks were dispatched to recover standing fluid from the lined facility as well as the pasture. Microblaze was immediately applied to the impacted area occurring outside of the containment in the pasture. The attached site diagram depicts the approximate area impacted by the release along with the approximate sampling points.

Based on the Chevron-Texaco Trend Maps, the release area would be classified at a site ranking of 10 with a depth to groundwater of 50' > 100'.

**CORPORATE ADDRESS**  
One Concho Center | 600 West Illinois Avenue | Midland, Texas 79701  
PHONE 432.683.7443 | FAX 432.683.7441

**LOCAL ADDRESS**  
Concho West | 2208 Main Street | Artesia, New Mexico 88210  
PHONE 575.748.6940 | FAX 575.746.2096

## Soil Assessment and Analytical Results

Below is a summary of the attached analytical results:

<b>Site Ranking: 10</b>					
<b>Depth to GW per SEO: 50' &gt; 100'</b>					
<b>S1</b>	<b>BTEX</b>	<b>GRO</b>	<b>DRO</b>	<b>TPH</b>	<b>CI-</b>
Surf	<0.300	<10.0	<10.0	<10.0	<16.0
1'	<0.300	<10.0	<10.0	<10.0	<16.0
<b>S2</b>	<b>BTEX</b>	<b>GRO</b>	<b>DRO</b>	<b>TPH</b>	<b>CI-</b>
Surf	<0.300	<10.0	<10.0	<10.0	<16.0
1'	<0.300	<10.0	<10.0	<10.0	<16.0
<b>S3</b>	<b>BTEX</b>	<b>GRO</b>	<b>DRO</b>	<b>TPH</b>	<b>CI-</b>
Surf	<0.300	<10.0	<10.0	<10.0	<16.0
1'	<0.300	<10.0	<10.0	<10.0	<16.0
<b>Bold values exceed RRALs per NMOCD Guidelines (1993)</b>					

COG Operating LLC proposes that no excavation be required in the pasture based on the analytical results obtained.

If there are no objections or further stipulations, COG Operating LLC requests closure of the above captioned location. Please feel free to contact me with any questions or concerns at 432.818.2369.

Sincerely,

Robert Grubbs,

Sr. Environmental Coordinator

Enclosure(s): Site Diagram  
Analytical Results  
C-141 Initial (Copy)  
C-141 Final



District I  
1625 N. French Dr., Hobbs, NM 88240  
District II  
811 S. First St., Artesia, NM 88210  
District III  
1000 Rio Brazos Road, Aztec, NM 87410  
District IV  
1220 S. St. Francis Dr., Santa Fe, NM 87505

State of New Mexico  
Energy Minerals and Natural Resources

Oil Conservation Division  
1220 South St. Francis Dr.  
Santa Fe, NM 87505

Form C-141  
Revised August 8, 2011

Submit 1 Copy to appropriate District Office in  
accordance with 19.15.29 NMAC.

### Release Notification and Corrective Action

#### OPERATOR

☒ Initial Report ☐ Final Report

Name of Company: COG Operating LLC	Contact: Robert McNeill
Address: 600 West Illinois Avenue, Midland TX 79701	Telephone No. 432-230-0077
Facility Name: ALBATROSS STATE COM #002H	Facility Type: Battery

Surface Owner:	Mineral Owner: State	API No. 30-025-41544
----------------	----------------------	----------------------

#### LOCATION OF RELEASE

Unit Letter B	Section 30	Township 18S	Range 35E	Feet from the 190'	North/South Line North	Feet from the 1980'	East/West Line East	County Lea
------------------	---------------	-----------------	--------------	-----------------------	---------------------------	------------------------	------------------------	---------------

Latitude 32.725502 Longitude -103.4947205

#### NATURE OF RELEASE

Type of Release: Oil	Volume of Release: 20 bbls	Volume Recovered: 5 bbls
Source of Release: Gasket	Date and Hour of Occurrence: 2/9/2016 11:00 am	Date and Hour of Discovery: 2/9/2016 11:00 am
Was Immediate Notice Given? <input type="checkbox"/> Yes <input type="checkbox"/> No <input checked="" type="checkbox"/> Not Required	If YES, To Whom?	
By Whom?	Date and Hour:	
Was a Watercourse Reached? <input type="checkbox"/> Yes <input checked="" type="checkbox"/> No	If YES, Volume Impacting the Watercourse.	

If a Watercourse was Impacted, Describe Fully.\*

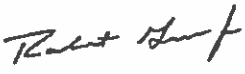
Describe Cause of Problem and Remedial Action Taken.\*

This release was caused when a gasket on failed on a FWKO. Vacuum trucks were dispatched to recover the standing fluid.

Describe Area Affected and Cleanup Action Taken.\*

The release occurred within a lined containment. A spray of oil misted over the pad and nearby pasture. Concho will have the spill site sampled to delineate any possible contamination from the release and we will present a remediation work plan to the NMOCD for approval prior to any significant remediation work.

I hereby certify that the information given above is true and complete to the best of my knowledge and understand that pursuant to NMOCD rules and regulations all operators are required to report and/or file certain release notifications and perform corrective actions for releases which may endanger public health or the environment. The acceptance of a C-141 report by the NMOCD marked as "Final Report" does not relieve the operator of liability should their operations have failed to adequately investigate and remediate contamination that pose a threat to ground water, surface water, human health or the environment. In addition, NMOCD acceptance of a C-141 report does not relieve the operator of responsibility for compliance with any other federal, state, or local laws and/or regulations.

Signature: 		<b>OIL CONSERVATION DIVISION</b>	
Printed Name: Robert Grubbs		Approved by Environmental Specialist:	
Title: Senior Environmental Coordinator		Approval Date:	Expiration Date:
E-mail Address: rgrubbs@concho.com		Conditions of Approval:	
Date: February 23, 2016 Phone: 432-230-0077		Attached <input type="checkbox"/>	

\* Attach Additional Sheets If Necessary

District I  
1625 N. French Dr., Hobbs, NM 88240  
District II  
811 S. First St., Artesia, NM 88210  
District III  
1000 Rio Brazos Road, Aztec, NM 87410  
District IV  
1220 S. St. Francis Dr., Santa Fe, NM 87505

State of New Mexico  
Energy Minerals and Natural Resources

Oil Conservation Division  
1220 South St. Francis Dr.  
Santa Fe, NM 87505

Form C-141  
Revised August 8, 2011

Submit 1 Copy to appropriate District Office in  
accordance with 19.15.29 NMAC.

## Release Notification and Corrective Action

### OPERATOR

☐ Initial Report ☒ Final Report

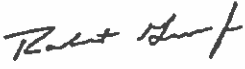
Name of Company: COG Operating LLC	Contact: Robert McNeill
Address: 600 West Illinois Avenue, Midland TX 79701	Telephone No. 432-230-0077
Facility Name: ALBATROSS STATE COM #002H	Facility Type: Battery
Surface Owner:	Mineral Owner: State
API No. 30-025-41544	

### LOCATION OF RELEASE

Unit Letter B	Section 30	Township 18S	Range 35E	Feet from the 190'	North/South Line North	Feet from the 1980'	East/West Line East	County Lea
------------------	---------------	-----------------	--------------	-----------------------	---------------------------	------------------------	------------------------	---------------

Latitude 32.725502 Longitude -103.4947205

### NATURE OF RELEASE

Type of Release: Oil	Volume of Release: 20 bbls	Volume Recovered: 5 bbls
Source of Release: Gasket	Date and Hour of Occurrence: 2/9/2016 11:00 am	Date and Hour of Discovery: 2/9/2016 11:00 am
Was Immediate Notice Given? <input type="checkbox"/> Yes <input type="checkbox"/> No <input checked="" type="checkbox"/> Not Required	If YES, To Whom?	
By Whom?	Date and Hour:	
Was a Watercourse Reached? <input type="checkbox"/> Yes <input checked="" type="checkbox"/> No	If YES, Volume Impacting the Watercourse.	
If a Watercourse was Impacted, Describe Fully.*		
Describe Cause of Problem and Remedial Action Taken.* This release was caused when a gasket on failed on a FWKO. Vacuum trucks were dispatched to recover the standing fluid.		
Describe Area Affected and Cleanup Action Taken.* The release occurred within a lined containment. A spray of oil misted over the pad and nearby pasture. Concho had the spill site sampled to delineate any possible contamination from the release. Attached is sampling analysis indicating RRALs were achieved.		
I hereby certify that the information given above is true and complete to the best of my knowledge and understand that pursuant to NMOCD rules and regulations all operators are required to report and/or file certain release notifications and perform corrective actions for releases which may endanger public health or the environment. The acceptance of a C-141 report by the NMOCD marked as "Final Report" does not relieve the operator of liability should their operations have failed to adequately investigate and remediate contamination that pose a threat to ground water, surface water, human health or the environment. In addition, NMOCD acceptance of a C-141 report does not relieve the operator of responsibility for compliance with any other federal, state, or local laws and/or regulations.		
Signature: 	OIL CONSERVATION DIVISION	
Printed Name: Robert Grubbs	Approved by Environmental Specialist:	
Title: Senior Environmental Coordinator	Approval Date:	Expiration Date:
E-mail Address: rgrubbs@concho.com	Conditions of Approval:	Attached <input type="checkbox"/>
Date: March 17, 2016	Phone: 432-230-0077	

\* Attach Additional Sheets If Necessary

February 9, 2016

**ALBATROSS STATE COM #002H**

API: 30-025-41544

32.725460, -103.494644

Released: 20 bbls oil

Recovered: 5 bbls oil

**Legend**

- ALBATROSS STATE COM2H
- Release Area

**Site Ranking:10****Depth to GW per SEO: 50 > 100**

S1	BTEX	GRO	DRO	TPH	Cl-
Surf	<0.300	<10.0	<10.0	<10.0	<16.0
1'	<0.300	<10.0	<10.0	<10.0	<16.0
S2	BTEX	GRO	DRO	TPH	Cl-
Surf	<0.300	<10.0	<10.0	<10.0	<16.0
1'	<0.300	<10.0	<10.0	<10.0	<16.0
S3	BTEX	GRO	DRO	TPH	Cl-
Surf	<0.300	<10.0	<10.0	<10.0	<16.0
1'	<0.300	<10.0	<10.0	<10.0	<16.0

**Bold values exceed RRALs per NMOCD Guidelines (1993)**

ALBATROSS STATE COM2H

S1

S2

S3

N

Google earth

300 ft

CONCHO





PHONE (575) 393-2326 • 101 E. MARLAND • HOBBS, NM 88240

March 15, 2016

DAKOTA NEEL

COG OPERATING

P. O. BOX 1630

ARTESIA, NM 88210

RE: ALBATROSS ST COM 2H TK BAT

Enclosed are the results of analyses for samples received by the laboratory on 03/09/16 11:30.

Cardinal Laboratories is accredited through Texas NELAP under certificate number T104704398-15-7. Accreditation applies to drinking water, non-potable water and solid and chemical materials. All accredited analytes are denoted by an asterisk (\*). For a complete list of accredited analytes and matrices visit the TCEQ website at [www.tceq.texas.gov/field/qa/lab\\_accred\\_certif.html](http://www.tceq.texas.gov/field/qa/lab_accred_certif.html).

Cardinal Laboratories is accredited through the State of Colorado Department of Public Health and Environment for:

Method EPA 552.2	Haloacetic Acids (HAA-5)
Method EPA 524.2	Total Trihalomethanes (TTHM)
Method EPA 524.4	Regulated VOCs (V1, V2, V3)

Accreditation applies to public drinking water matrices.

This report meets NELAP requirements and is made up of a cover page, analytical results, and a copy of the original chain-of-custody. If you have any questions concerning this report, please feel free to contact me.

Sincerely,

Celey D. Keene

Lab Director/Quality Manager



PHONE (575) 393-2326 • 101 E. MARLAND • HOBBS, NM 88240

**Analytical Results For:**

COG OPERATING  
 DAKOTA NEEL  
 P. O. BOX 1630  
 ARTESIA NM, 88210  
 Fax To: NONE

Received: 03/09/2016  
 Reported: 03/15/2016  
 Project Name: ALBATROSS ST COM 2H TK BAT  
 Project Number: NONE GIVEN  
 Project Location: NOT GIVEN

Sampling Date: 03/02/2016  
 Sampling Type: Soil  
 Sampling Condition: Cool & Intact  
 Sample Received By: Jodi Henson

**Sample ID: S1 - SURFACE (H600517-01)**

BTEX 8021B		mg/kg		Analyzed By: MS					
Analyte	Result	Reporting Limit	Analyzed	Method Blank	BS	% Recovery	True Value QC	RPD	Qualifier
Benzene*	<0.050	0.050	03/14/2016	ND	2.03	101	2.00	2.02	
Toluene*	<0.050	0.050	03/14/2016	ND	1.98	99.0	2.00	2.28	
Ethylbenzene*	<0.050	0.050	03/14/2016	ND	1.82	91.0	2.00	1.48	
Total Xylenes*	<0.150	0.150	03/14/2016	ND	5.59	93.2	6.00	2.13	
Total BTEX	<0.300	0.300	03/14/2016	ND					

Surrogate: 4-Bromofluorobenzene (PIL) 98.6 % 73.6-140

Chloride, SM4500Cl-B		mg/kg		Analyzed By: AP					
Analyte	Result	Reporting Limit	Analyzed	Method Blank	BS	% Recovery	True Value QC	RPD	Qualifier
Chloride	<16.0	16.0	03/11/2016	ND	416	104	400	3.92	

TPH 8015M		mg/kg		Analyzed By: CK					
Analyte	Result	Reporting Limit	Analyzed	Method Blank	BS	% Recovery	True Value QC	RPD	Qualifier
GRO C6-C10	<10.0	10.0	03/12/2016	ND	198	98.8	200	3.25	
DRO >C10-C28	<10.0	10.0	03/12/2016	ND	204	102	200	0.937	

Surrogate: 1-Chlorooctane 89.8 % 35-147

Surrogate: 1-Chlorooctadecane 104 % 28-171

**Cardinal Laboratories**

\*=Accredited Analyte

PLEASE NOTE: Liability and Damages. Cardinal's liability and client's exclusive remedy for any claim arising, whether based in contract or tort, shall be limited to the amount paid by client for analyses. All claims, including those for negligence and any other cause whatsoever shall be deemed waived unless made in writing and received by Cardinal within thirty (30) days after completion of the applicable service. In no event shall Cardinal be liable for incidental or consequential damages, including, without limitation, business interruptions, loss of use, or loss of profits incurred by client, its subsidiaries, affiliates or successors arising out of or related to the performance of the services hereunder by Cardinal, regardless of whether such claim is based upon any of the above stated reasons or otherwise. Results relate only to the samples identified above. This report shall not be reproduced except in full with written approval of Cardinal Laboratories.

Celey D. Keene, Lab Director/Quality Manager



PHONE (575) 393-2326 • 101 E. MARLAND • HOBBS, NM 88240

**Analytical Results For:**

COG OPERATING  
 DAKOTA NEEL  
 P. O. BOX 1630  
 ARTESIA NM, 88210  
 Fax To: NONE

Received: 03/09/2016  
 Reported: 03/15/2016  
 Project Name: ALBATROSS ST COM 2H TK BAT  
 Project Number: NONE GIVEN  
 Project Location: NOT GIVEN

Sampling Date: 03/02/2016  
 Sampling Type: Soil  
 Sampling Condition: Cool & Intact  
 Sample Received By: Jodi Henson

**Sample ID: S1 - 1' (H600517-02)**

BTEX 8021B		mg/kg	Analyzed By: MS						
Analyte	Result	Reporting Limit	Analyzed	Method Blank	BS	% Recovery	True Value QC	RPD	Qualifier
Benzene*	<0.050	0.050	03/14/2016	ND	2.03	101	2.00	2.02	
Toluene*	<0.050	0.050	03/14/2016	ND	1.98	99.0	2.00	2.28	
Ethylbenzene*	<0.050	0.050	03/14/2016	ND	1.82	91.0	2.00	1.48	
Total Xylenes*	<0.150	0.150	03/14/2016	ND	5.59	93.2	6.00	2.13	
Total BTEX	<0.300	0.300	03/14/2016	ND					

Surrogate: 4-Bromofluorobenzene (PIC) 99.2 % 73 6-140

Chloride, SM4500Cl-B		mg/kg	Analyzed By: AP						
Analyte	Result	Reporting Limit	Analyzed	Method Blank	BS	% Recovery	True Value QC	RPD	Qualifier
Chloride	<16.0	16.0	03/11/2016	ND	416	104	400	3.92	

TPH 8015M		mg/kg	Analyzed By: CK						
Analyte	Result	Reporting Limit	Analyzed	Method Blank	BS	% Recovery	True Value QC	RPD	Qualifier
GRO C6-C10	<10.0	10.0	03/12/2016	ND	198	98.8	200	3.25	
DRO >C10-C28	<10.0	10.0	03/12/2016	ND	204	102	200	0.937	

Surrogate: 1-Chlorooctane 87.7 % 35-147

Surrogate: 1-Chlorooctadecane 99.6 % 28-171

Cardinal Laboratories

\*=Accredited Analyte

PLEASE NOTE: Liability and Damages. Cardinal's liability and client's exclusive remedy for any claim arising, whether based in contract or tort, shall be limited to the amount paid by client for analyses. All claims, including those for negligence and any other cause whatsoever shall be deemed waived unless made in writing and received by Cardinal within thirty (30) days after completion of the applicable service. In no event shall Cardinal be liable for incidental or consequential damages, including, without limitation, business interruptions, loss of use, or loss of profits incurred by client, its subsidiaries, affiliates or successors arising out of or related to the performance of the services hereunder by Cardinal, regardless of whether such claim is based upon any of the above stated reasons or otherwise. Results relate only to the samples identified above. This report shall not be reproduced except in full with written approval of Cardinal Laboratories.

Celey D. Keene, Lab Director/Quality Manager



PHONE (575) 393-2326 • 101 E. MARLAND • HOBBS, NM 88240

**Analytical Results For:**

COG OPERATING  
 DAKOTA NEEL  
 P. O. BOX 1630  
 ARTESIA NM, 88210  
 Fax To: NONE

Received: 03/09/2016  
 Reported: 03/15/2016  
 Project Name: ALBATROSS ST COM 2H TK BAT  
 Project Number: NONE GIVEN  
 Project Location: NOT GIVEN

Sampling Date: 03/02/2016  
 Sampling Type: Soil  
 Sampling Condition: Cool & Intact  
 Sample Received By: Jodi Henson

**Sample ID: S2 - SURFACE (H600517-03)**

BTEX 80218		mg/kg	Analyzed By: MS						
Analyte	Result	Reporting Limit	Analyzed	Method Blank	BS	% Recovery	True Value QC	RPD	Qualifier
Benzene*	<0.050	0.050	03/14/2016	ND	2.03	101	2.00	2.02	
Toluene*	0.061	0.050	03/14/2016	ND	1.98	99.0	2.00	2.28	
Ethylbenzene*	<0.050	0.050	03/14/2016	ND	1.82	91.0	2.00	1.48	
Total Xylenes*	<0.150	0.150	03/14/2016	ND	5.59	93.2	6.00	2.13	
Total BTEX	<0.300	0.300	03/14/2016	ND					

Surrogate: 4-Bromofluorobenzene (PIC) 99.7 % 73.6-140

Chloride, SM4500Cl-B		mg/kg	Analyzed By: AP						
Analyte	Result	Reporting Limit	Analyzed	Method Blank	BS	% Recovery	True Value QC	RPD	Qualifier
Chloride	<16.0	16.0	03/11/2016	ND	400	100	400	0.00	

TPH 8015M		mg/kg	Analyzed By: CK						
Analyte	Result	Reporting Limit	Analyzed	Method Blank	BS	% Recovery	True Value QC	RPD	Qualifier
GRO C6-C10	<10.0	10.0	03/12/2016	ND	198	98.8	200	3.25	
DRO >C10-C28	<10.0	10.0	03/12/2016	ND	204	102	200	0.937	

Surrogate: 1-Chlorooctane 99.6 % 35-147

Surrogate: 1-Chlorooctadecane 117 % 28-171

Cardinal Laboratories

\*=Accredited Analyte

PLEASE NOTE: Liability and Damages. Cardinal's liability and client's exclusive remedy for any claim arising, whether based in contract or tort, shall be limited to the amount paid by client for analyses. All claims, including those for negligence and any other cause whatsoever shall be deemed waived unless made in writing and received by Cardinal within thirty (30) days after completion of the applicable service. In no event shall Cardinal be liable for incidental or consequential damages, including, without limitation, business interruptions, loss of use, or loss of profits incurred by client, its subsidiaries, affiliates or successors arising out of or related to the performance of the services hereunder by Cardinal, regardless of whether such claim is based upon any of the above stated reasons or otherwise. Results relate only to the samples identified above. This report shall not be reproduced except in full with written approval of Cardinal Laboratories.

Celey D. Keene, Lab Director/Quality Manager



PHONE (575) 393-2326 • 101 E. MARLAND • HOBBS, NM 88240

**Analytical Results For:**

COG OPERATING  
 DAKOTA NEEL  
 P. O. BOX 1630  
 ARTESIA NM, 88210  
 Fax To: NONE

Received: 03/09/2016  
 Reported: 03/15/2016  
 Project Name: ALBATROSS ST COM 2H TK BAT  
 Project Number: NONE GIVEN  
 Project Location: NOT GIVEN

Sampling Date: 03/02/2016  
 Sampling Type: Soil  
 Sampling Condition: Cool & Intact  
 Sample Received By: Jodi Henson

**Sample ID: S2 - 1' (H600517-04)**

BTEX 80218		mg/kg		Analyzed By: MS					
Analyte	Result	Reporting Limit	Analyzed	Method Blank	BS	% Recovery	True Value QC	RPD	Qualifier
Benzene*	<0.050	0.050	03/14/2016	ND	2.15	107	2.00	4.48	
Toluene*	<0.050	0.050	03/14/2016	ND	2.09	104	2.00	5.31	
Ethylbenzene*	<0.050	0.050	03/14/2016	ND	1.87	93.6	2.00	4.18	
Total Xylenes*	<0.150	0.150	03/14/2016	ND	5.70	95.1	6.00	3.38	
Total BTEX	<0.300	0.300	03/14/2016	ND					

Surrogate: 4-Bromofluorobenzene (PIC) 99.9 % 73.6-140

Chloride, SM4500Cl-B		mg/kg		Analyzed By: AP					
Analyte	Result	Reporting Limit	Analyzed	Method Blank	BS	% Recovery	True Value QC	RPD	Qualifier
Chloride	<16.0	16.0	03/11/2016	ND	400	100	400	0.00	

TPH 8015M		mg/kg		Analyzed By: CK					
Analyte	Result	Reporting Limit	Analyzed	Method Blank	BS	% Recovery	True Value QC	RPD	Qualifier
GRO C6-C10	<10.0	10.0	03/12/2016	ND	198	98.8	200	3.25	
DRO >C10-C28	<10.0	10.0	03/12/2016	ND	204	102	200	0.937	

Surrogate: 1-Chlorooctane 92.5 % 35-147

Surrogate: 1-Chlorooctadecane 113 % 28-171

**Cardinal Laboratories**

\*=Accredited Analyte

PLEASE NOTE: Liability and Damages. Cardinal's liability and client's exclusive remedy for any claim arising, whether based in contract or tort, shall be limited to the amount paid by client for analyses. All claims, including those for negligence and any other cause whatsoever shall be deemed waived unless made in writing and received by Cardinal within thirty (30) days after completion of the applicable service. In no event shall Cardinal be liable for incidental or consequential damages, including, without limitation, business interruptions, loss of use, or loss of profits incurred by client, its subsidiaries, affiliates or successors arising out of or related to the performance of the services hereunder by Cardinal, regardless of whether such claim is based upon any of the above stated reasons or otherwise. Results relate only to the samples identified above. This report shall not be reproduced except in full with written approval of Cardinal Laboratories.

Celey D. Keene, Lab Director/Quality Manager





PHONE (575) 393-2326 • 101 E. MARLAND • HOBBS, NM 88240

**Analytical Results For:**

COG OPERATING  
DAKOTA NEEL  
P. O. BOX 1630  
ARTESIA NM, 88210  
Fax To: NONE

Received: 03/09/2016  
Reported: 03/15/2016  
Project Name: ALBATROSS ST COM 2H TK BAT  
Project Number: NONE GIVEN  
Project Location: NOT GIVEN

Sampling Date: 03/02/2016  
Sampling Type: Soil  
Sampling Condition: Cool & Intact  
Sample Received By: Jodi Henson

**Sample ID: S3 - SURFACE (H600517-05)**

BTEX 80218		mg/kg	Analyzed By: MS						
Analyte	Result	Reporting Limit	Analyzed	Method Blank	BS	% Recovery	True Value QC	RPD	Qualifier
Benzene*	<0.050	0.050	03/14/2016	ND	2.15	107	2.00	4.48	
Toluene*	<0.050	0.050	03/14/2016	ND	2.09	104	2.00	5.31	
Ethylbenzene*	<0.050	0.050	03/14/2016	ND	1.87	93.6	2.00	4.18	
Total Xylenes*	<0.150	0.150	03/14/2016	ND	5.70	95.1	6.00	3.38	
Total BTEX	<0.300	0.300	03/14/2016	ND					

Surrogate: 4-Bromofluorobenzene (PIC) 100 % 73 6-140

Chloride, SM4500Cl-B		mg/kg	Analyzed By: AP						
Analyte	Result	Reporting Limit	Analyzed	Method Blank	BS	% Recovery	True Value QC	RPD	Qualifier
Chloride	<16.0	16.0	03/11/2016	ND	400	100	400	0.00	

TPH 8015M		mg/kg	Analyzed By: CK						
Analyte	Result	Reporting Limit	Analyzed	Method Blank	BS	% Recovery	True Value QC	RPD	Qualifier
GRO C6-C10	<10.0	10.0	03/12/2016	ND	198	98.8	200	3.25	
DRO >C10-C28	<10.0	10.0	03/12/2016	ND	204	102	200	0.937	

Surrogate: 1-Chlorooctane 90.1 % 35-147

Surrogate: 1-Chlorooctadecane 110 % 28-171

Cardinal Laboratories

\*=Accredited Analyte

PLEASE NOTE: Liability and Damages. Cardinal's liability and client's exclusive remedy for any claim arising, whether based in contract or tort, shall be limited to the amount paid by client for analyses. All claims, including those for negligence and any other cause whatsoever shall be deemed waived unless made in writing and received by Cardinal within thirty (30) days after completion of the applicable service. In no event shall Cardinal be liable for incidental or consequential damages, including, without limitation, business interruptions, loss of use, or loss of profits incurred by client, its subsidiaries, affiliates or successors arising out of or related to the performance of the services hereunder by Cardinal, regardless of whether such claim is based upon any of the above stated reasons or otherwise. Results relate only to the samples identified above. This report shall not be reproduced except in full with written approval of Cardinal Laboratories.

Celey D. Keene, Lab Director/Quality Manager



PHONE (575) 393-2326 • 101 E. MARLAND • HOBBS, NM 88240

### Notes and Definitions

S-04	The surrogate recovery for this sample is outside of established control limits due to a sample matrix effect.
QM-07	The spike recovery was outside acceptance limits for the MS and/or MSD. The batch was accepted based on acceptable LCS recovery.
ND	Analyte NOT DETECTED at or above the reporting limit
RPD	Relative Percent Difference
**	Samples not received at proper temperature of 6°C or below.
***	Insufficient time to reach temperature.
-	Chloride by SM4500Cl-B does not require samples be received at or below 6°C Samples reported on an as received basis (wet) unless otherwise noted on report

Cardinal Laboratories

\*=Accredited Analyte

PLEASE NOTE: Liability and Damages. Cardinal's liability and client's exclusive remedy for any claim arising, whether based in contract or tort, shall be limited to the amount paid by client for analyses. All claims, including those for negligence and any other cause whatsoever shall be deemed waived unless made in writing and received by Cardinal within thirty (30) days after completion of the applicable service. In no event shall Cardinal be liable for incidental or consequential damages, including, without limitation, business interruptions, loss of use, or loss of profits incurred by client, its subsidiaries, affiliates or successors arising out of or related to the performance of the services hereunder by Cardinal, regardless of whether such claim is based upon any of the above stated reasons or otherwise. Results relate only to the samples identified above. This report shall not be reproduced except in full with written approval of Cardinal Laboratories.

Celey D. Keene, Lab Director/Quality Manager



101 East Marland, Hobbs, NM 88240  
(575) 393-2326 FAX (575) 393-2476

## CHAIN-OF-CUSTODY AND ANALYSIS REQUEST

1057

[illegible]



**101 East Marland, Hobbs, NM 88240  
(575) 393-2326 FAX (575) 393-2476**

# CHAIN-OF-CUSTODY AND ANALYSIS REQUEST

202

<b>Company Name:</b> COG Operating LLC <b>Project Manager:</b> Dakota Neel <b>Address:</b> 2208 West Main <b>City:</b> Artesia <b>Phone #:</b> (575) 748-6930 <b>Project #:</b> <b>Project Name:</b> Albatross St Corn 2H TK BAT <b>Project Location:</b>				<b>State:</b> NM <b>Zip:</b> 88210 <b>Attn:</b> Robert McNeill <b>Address:</b> 600 W Illinois <b>City:</b> Midland <b>State:</b> TX <b>Phone #:</b> (432) 221-0368 <b>Fax #:</b>				<b>P.O. #:</b> <b>Company:</b> COG Operating LLC <b>Attn:</b> Robert McNeill <b>Address:</b> 600 W Illinois <b>City:</b> Midland <b>State:</b> TX <b>Phone #:</b> (432) 221-0368 <b>Fax #:</b>			
<b>FOR LAB USE ONLY</b> <b>Sampler Name:</b> Dakota Neel				<b>Lab I.D.:</b> #00517 <b>Sample I.D.:</b> 3 <b>S2-SURFACE:</b> 4 <b>S2-1'</b>				<b>DATE</b> 3/2/16 <b>TIME</b> 10:00 AM			
<b>PLEASE NOTE:</b> Liability and Damages. Customer's liability and charges, whichever remedy for any claim arising whenever based in contract or law, shall be limited to the amount paid by the client for the analysis. All claims, including those for negligence and any other causes whatsoever shall be deemed waived unless made in writing and received by Cardinal within 30 days after completion of the applicable analysis. In no event shall Cardinal be liable for negligent or consequential damages, including without limitation, business interruptions, loss of data, or loss of profits incurred by client, its subsidiaries, affiliates or employees arising out of or related to the performance of services hereunder by Cardinal. Signatures of whoever each client is based upon any of the above stated inquiries or references.				<b>Relinquished By:</b> DAKOTA NEEL <b>Date:</b> 3/9/2016 <b>Time:</b> 11:30 <b>Received By:</b> Brittany Feller				<b>Relinquished By:</b> <b>Date:</b> <b>Time:</b>			
<b>Delivered By:</b> (Circle One) Sampled by: 3.42 Other:				<b>Sample Condition:</b> Cool <input checked="" type="checkbox"/> Intact <input checked="" type="checkbox"/> Yes <input checked="" type="checkbox"/> No <input checked="" type="checkbox"/> <b>Checked By:</b> [Signature]				<b>Phone Result:</b> <input type="checkbox"/> Yes <input type="checkbox"/> No <input type="checkbox"/> Add'l Phone #: <b>Remarks:</b> dneel2@concho.com kcarasco@concho.com alrujillo@concho.com			



**101 East Marland, Hobbs, NM 88240  
(575) 393-2326 FAX (575) 393-2476**

# CHAIN-OF-CUSTODY AND ANALYSIS REQUEST

[illegible]

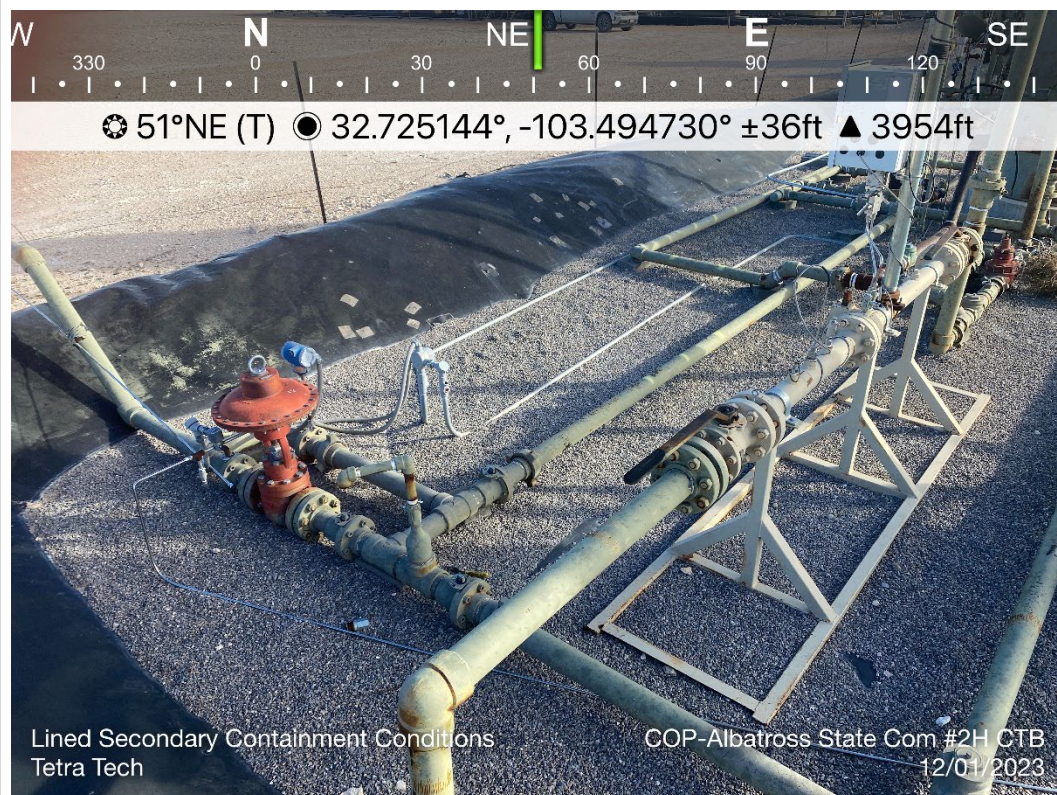
## **APPENDIX D**

### **Photographic Documentation**



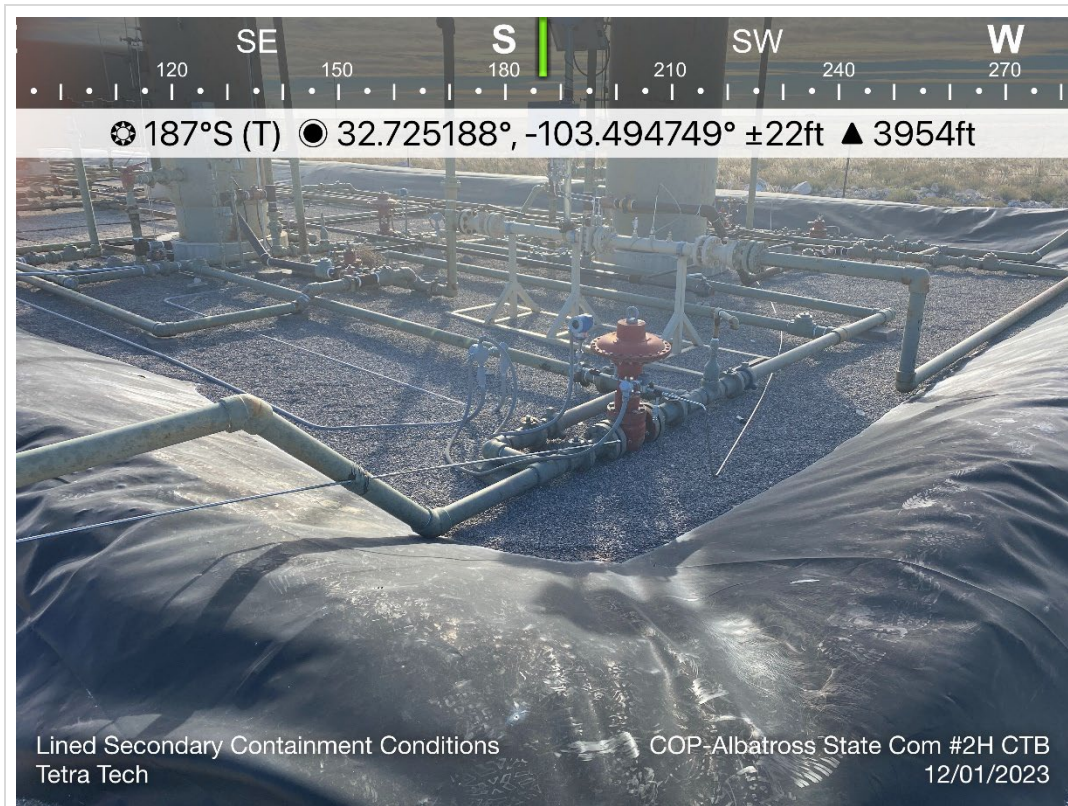


TETRA TECH, INC. PROJECT NO. 212C-MD-03289	DESCRIPTION	View east-southeast of site signage. Albatross State Com #2H CTB.	1
	SITE NAME	Albatross State Com #002H Release	12/01/2023

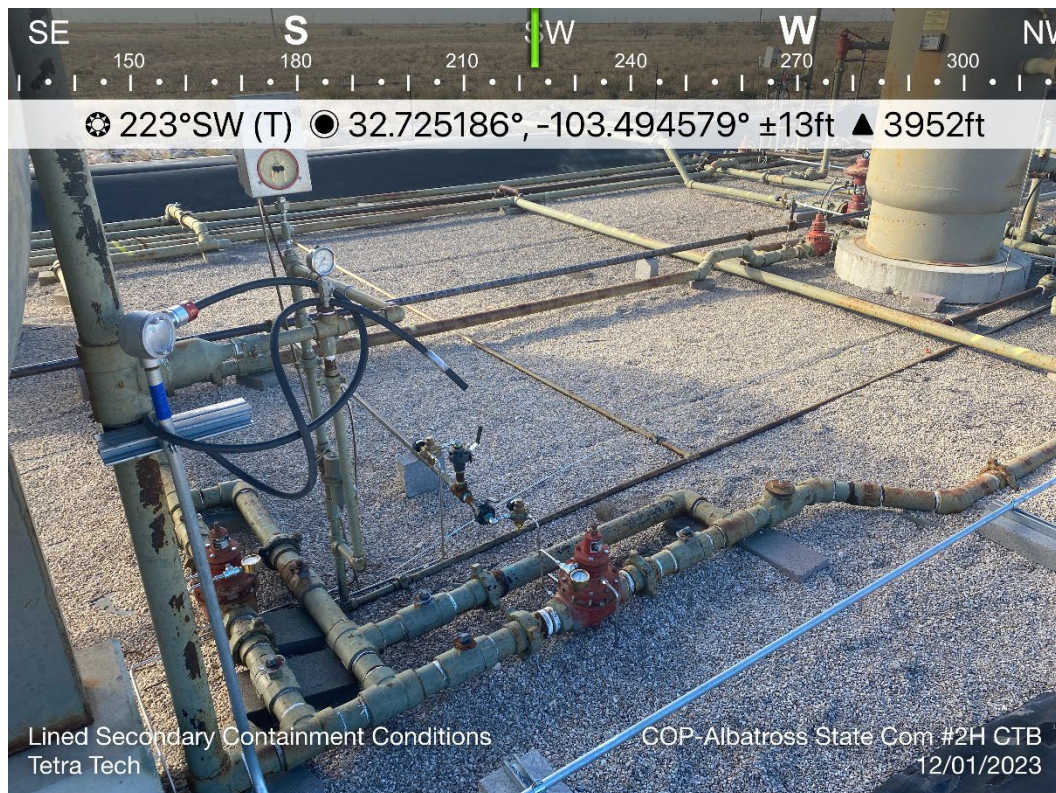


TETRA TECH, INC. PROJECT NO. 212C-MD-03289	DESCRIPTION	View east-northeast of approximate release area inside lined secondary containment. Mass of surface pipelines.	2
	SITE NAME	Albatross State Com #002H Release	12/01/2023



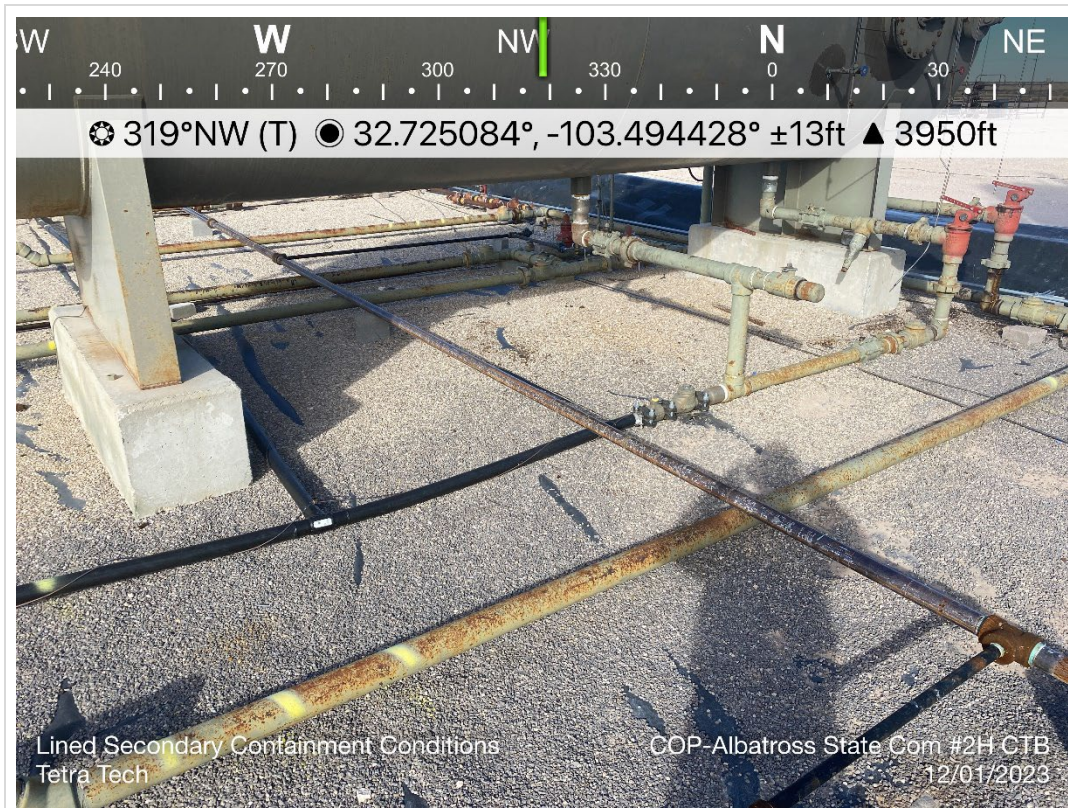


TETRA TECH, INC. PROJECT NO. 212C-MD-03289	DESCRIPTION	View south of approximate release area inside lined secondary containment. Mass of surface pipelines.	3
	SITE NAME	Albatross State Com #002H Release	12/01/2023



TETRA TECH, INC. PROJECT NO. 212C-MD-03289	DESCRIPTION	View southwest of approximate release area inside lined secondary containment. Mass of surface pipelines.	4
	SITE NAME	Albatross State Com #002H Release	12/01/2023





TETRA TECH, INC. PROJECT NO. 212C-MD-03289	DESCRIPTION	View northwest of approximate release area near FWKO inside lined secondary containment. Mass of surface pipelines.	5
	SITE NAME	Albatross State Com #002H Release	12/01/2023

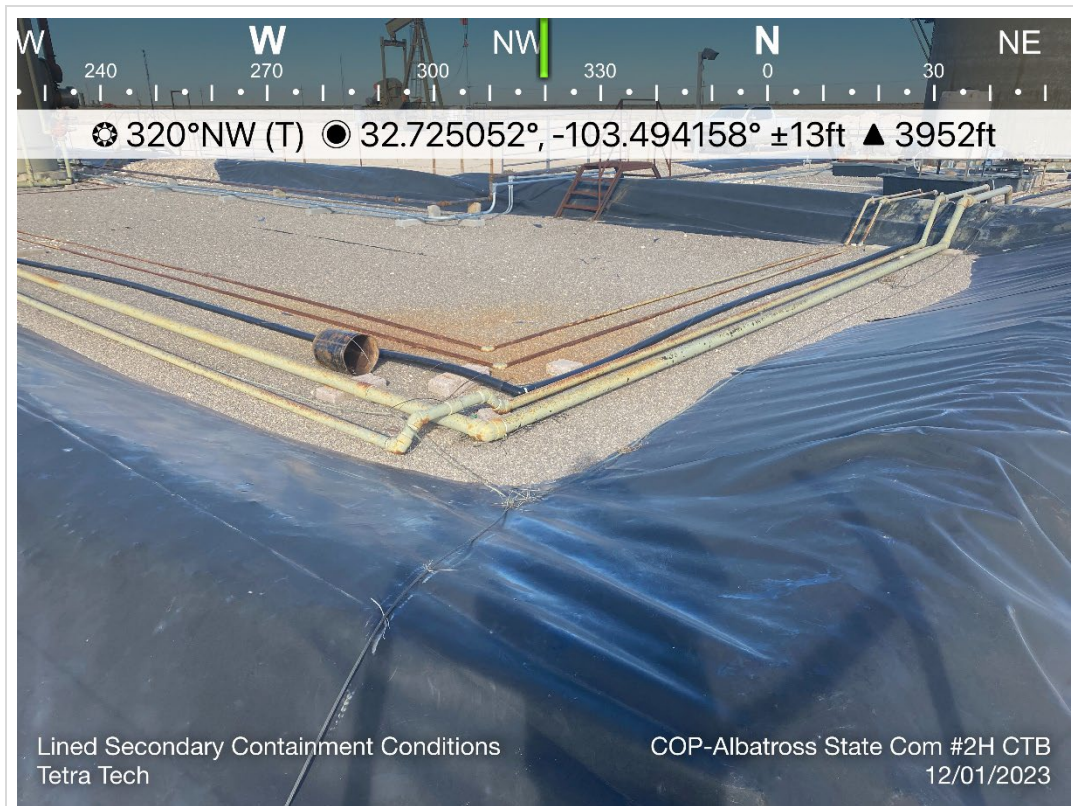


TETRA TECH, INC. PROJECT NO. 212C-MD-03289	DESCRIPTION	View east-northeast of approximate release area near FWKO inside lined secondary containment. Mass of surface pipelines.	6
	SITE NAME	Albatross State Com #002H Release	12/01/2023





TETRA TECH, INC. PROJECT NO. 212C-MD-03289	DESCRIPTION	View east-southeast of approximate release area inside lined secondary containment. Mass of surface pipelines and separators.	7
	SITE NAME	Albatross State Com #002H Release	12/01/2023

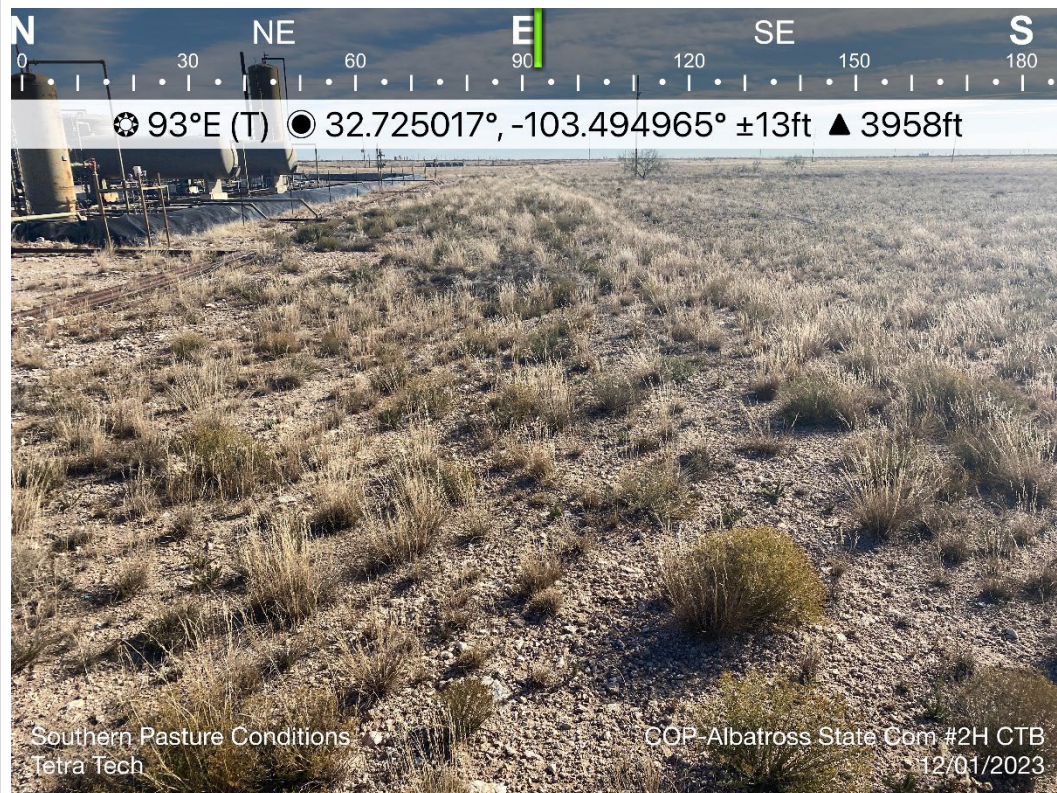


TETRA TECH, INC. PROJECT NO. 212C-MD-03289	DESCRIPTION	View northwest of lined secondary containment berm and surface pipelines.	8
	SITE NAME	Albatross State Com #002H Release	12/01/2023





TETRA TECH, INC. PROJECT NO. 212C-MD-03289	DESCRIPTION	View south-southeast of lined secondary containment of tank battery and surface pipelines.	9
	SITE NAME	Albatross State Com #002H Release	12/01/2023



TETRA TECH, INC. PROJECT NO. 212C-MD-03289	DESCRIPTION	View east of adjacent pasture; south of lined containment area.	10
	SITE NAME	Albatross State Com #002H Release	12/01/2023





TETRA TECH, INC. PROJECT NO. 212C-MD-03289	DESCRIPTION	View north-northeast of exposed liner conditions.	11
	SITE NAME	Albatross State Com #002H Release	12/07/2023



TETRA TECH, INC. PROJECT NO. 212C-MD-03289	DESCRIPTION	View north of exposed liner conditions.	12
	SITE NAME	Albatross State Com #002H Release	12/07/2023





TETRA TECH, INC. PROJECT NO. 212C-MD-03289	DESCRIPTION	View northeast of exposed liner conditions.	13
	SITE NAME	Albatross State Com #002H Release	12/07/2023

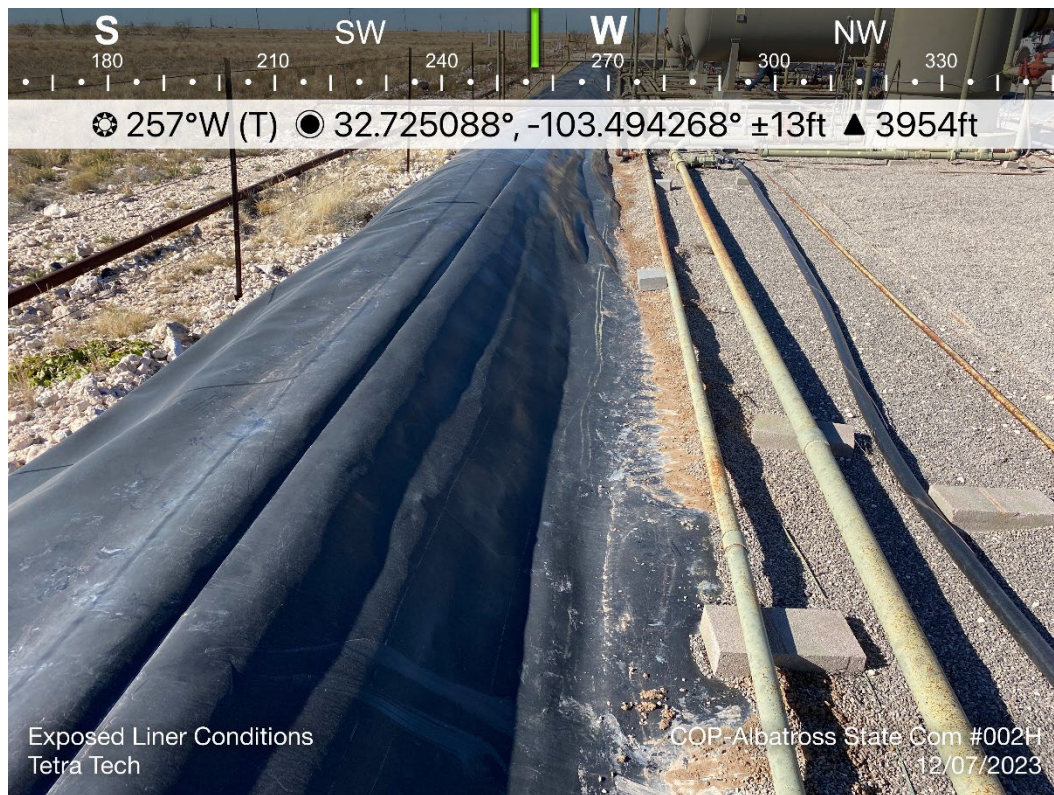


TETRA TECH, INC. PROJECT NO. 212C-MD-03289	DESCRIPTION	View north of exposed liner conditions.	14
	SITE NAME	Albatross State Com #002H Release	12/07/2023



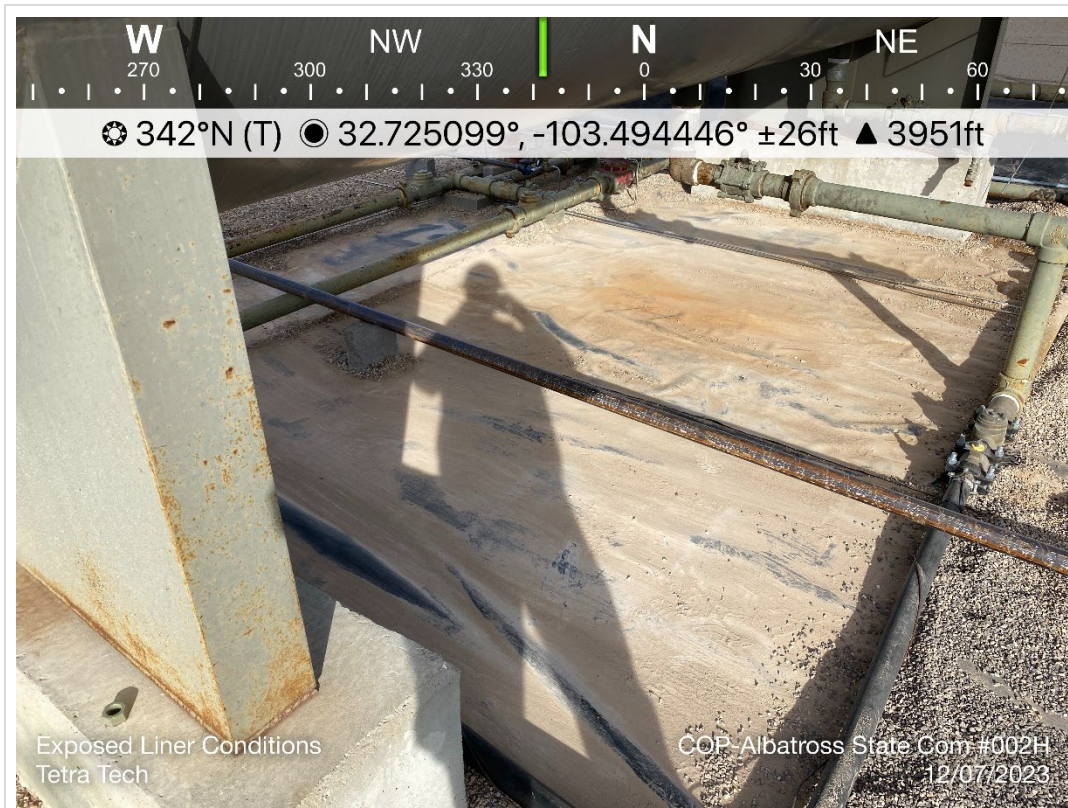


TETRA TECH, INC. PROJECT NO. 212C-MD-03289	DESCRIPTION	View southwest of exposed liner conditions.	15
	SITE NAME	Albatross State Com #002H Release	12/07/2023



TETRA TECH, INC. PROJECT NO. 212C-MD-03289	DESCRIPTION	View west-southwest of lined berm.	16
	SITE NAME	Albatross State Com #002H Release	12/07/2023





TETRA TECH, INC. PROJECT NO. 212C-MD-03289	DESCRIPTION	View north-northwest of exposed liner conditions directly beneath the FWKO unit.	17
	SITE NAME	Albatross State Com #002H Release	12/07/2023



TETRA TECH, INC. PROJECT NO. 212C-MD-03289	DESCRIPTION	View southeast of exposed liner conditions directly beneath the FWKO unit.	18
	SITE NAME	Albatross State Com #002H Release	12/07/2023

## **APPENDIX E**

### **Regulatory Correspondence**



**From:** OCDOnline@state.nm.us <OCDOnline@state.nm.us>  
**Sent:** Monday, December 4, 2023 4:07:38 PM  
**To:** Llull, Christian <Christian.Llull@tetrattech.com>  
**Subject:** The Oil Conservation Division (OCD) has accepted the application, Application ID: 290954

**⚠ CAUTION:** This email originated from an external sender. Verify the source before opening links or attachments. **⚠**

To whom it may concern (c/o Christian Llull for COG OPERATING LLC),

The OCD has received the submitted *Notification for Liner Inspection for a Release (C-141L)*, for incident ID (n#) nJXK1606034056.

The liner inspection is expected to take place:

**When:** 12/07/2023 @ 09:00

**Where:** B-30-18S-35E 190 FNL 1980 FEL (32.725502,-103.4947205)

**Additional Information:** In accordance with Subsection A of 19.15.29.11 NMAC, the responsible party must verbally notify the appropriate division district office prior to conducting the liner inspection.

Thus, on behalf of ConocoPhillips for the above referenced incident, Tetra Tech is duly providing this communication which serves as notification that a liner inspection will be conducted at this site on Thursday, December 7, 2023.

**Additional Instructions:** Approximate Release Point: 32.725502°, -103.4947205°

An OCD representative may be available onsite at the date and time reported. In the absence or presence of an OCD representative, liner inspection pursuant to 19.15.29.11.A(5)(a) NMAC is required. Should there be a change in the scheduled date and time of the sampling event, then another notification should be resubmitted through OCD permitting as soon as possible.

- **Failure to notify the OCD of liner inspections including any changes in date/time per the requirements of 19.15.29.11.A(5)(a)(ii) NMAC, may result in the inspection not being accepted.**

If you have any questions regarding this application, or don't know why you have received this email, please contact us.

**New Mexico Energy, Minerals and Natural Resources Department**  
1220 South St. Francis Drive  
Santa Fe, NM 87505

**Abbott, Sam**

---

**From:** OCDOnline@state.nm.us  
**Sent:** Monday, December 18, 2023 4:17 PM  
**To:** Llull, Christian  
**Subject:** The Oil Conservation Division (OCD) has accepted the application, Application ID: 295908

**⚠ CAUTION:** This email originated from an external sender. Verify the source before opening links or attachments. **⚠**

To whom it may concern (c/o Christian LLuLL for COG OPERATING LLC),

The OCD has received the submitted *Notification for (Final) Sampling of a Release (C-141N)*, for incident ID (n#) NJXK1606034056.

The sampling event is expected to take place:

**When:** 12/07/2023 @ 10:00

**Where:** B-30-18S-35E 190 FNL 1980 FEL (32.725502,-103.4947205)

**Additional Information:** Albatross State Com #002H FWKO Release  
ConocoPhillips  
INCIDENT ID: NJXK1606034056  
Landowner: State Trust lands

**Additional Instructions:** NA

An OCD representative may be available onsite at the date and time reported. In the absence or presence of an OCD representative, sampling pursuant to 19.15.29.12.D NMAC is required. Sampling must be performed following an approved sampling plan or pursuant to 19.15.29.12.D.(1).(c) NMAC. Should there be a change in the scheduled date and time of the sampling event, then another notification should be resubmitted through OCD permitting as soon as possible.

- **Failure to notify the OCD of sampling events including any changes in date/time per the requirements of 19.15.29.12.D.(1).(a) NMAC, may result in the remediation closure samples not being accepted.**

If you have any questions regarding this application, or don't know why you have received this email, please contact us.

**New Mexico Energy, Minerals and Natural Resources Department**  
1220 South St. Francis Drive  
Santa Fe, NM 87505

## **APPENDIX F**

### **Laboratory Analytical Data**





PHONE (575) 393-2326 ° 101 E. MARLAND ° HOBBS, NM 88240

---

December 12, 2023

SAM ABBOTT

TETRA TECH

901 WEST WALL STREET , STE 100

MIDLAND, TX 79701

RE: ALBATROSS STATE COM #002H FWKO RELEASE

Enclosed are the results of analyses for samples received by the laboratory on 12/07/23 13:39.

Cardinal Laboratories is accredited through Texas NELAP under certificate number T104704398-22-15. Accreditation applies to drinking water, non-potable water and solid and chemical materials. All accredited analytes are denoted by an asterisk (\*). For a complete list of accredited analytes and matrices visit the TCEQ website at [www.tceq.texas.gov/field/qa/lab\\_accred\\_certif.html](http://www.tceq.texas.gov/field/qa/lab_accred_certif.html).

Cardinal Laboratories is accredited through the State of Colorado Department of Public Health and Environment for:

Method EPA 552.2	Haloacetic Acids (HAA-5)
Method EPA 524.2	Total Trihalomethanes (TTHM)
Method EPA 524.4	Regulated VOCs (V1, V2, V3)

Accreditation applies to public drinking water matrices.

This report meets NELAP requirements and is made up of a cover page, analytical results, and a copy of the original chain-of-custody. If you have any questions concerning this report, please feel free to contact me.

Sincerely,

A handwritten signature in black ink that reads "Celey D. Keene".

Celey D. Keene

Lab Director/Quality Manager



PHONE (575) 393-2326 ° 101 E. MARLAND ° HOBBS, NM 88240

**Analytical Results For:**

TETRA TECH  
 SAM ABBOTT  
 901 WEST WALL STREET , STE 100  
 MIDLAND TX, 79701  
 Fax To: (432) 682-3946

Received:	12/07/2023	Sampling Date:	12/07/2023
Reported:	12/12/2023	Sampling Type:	Soil
Project Name:	ALBATROSS STATE COM #002H FWKO R	Sampling Condition:	Cool & Intact
Project Number:	212C - MD - 03289	Sample Received By:	Tamara Oldaker
Project Location:	COP - LEA CO NM		

**Sample ID: H - 1 ( 0-1' ) (H236579-01)**

BTEX 8021B		mg/kg		Analyzed By: JH/					
Analyte	Result	Reporting Limit	Analyzed	Method Blank	BS	% Recovery	True Value QC	RPD	Qualifier
Benzene*	<0.050	0.050	12/08/2023	ND	2.21	111	2.00	0.401	
Toluene*	<0.050	0.050	12/08/2023	ND	2.19	109	2.00	0.617	
Ethylbenzene*	<0.050	0.050	12/08/2023	ND	2.16	108	2.00	0.340	
Total Xylenes*	<0.150	0.150	12/08/2023	ND	6.86	114	6.00	0.345	
Total BTEX	<0.300	0.300	12/08/2023	ND					

Surrogate: 4-Bromofluorobenzene (PID) 105 % 71.5-134

Chloride, SM4500Cl-B		mg/kg		Analyzed By: HM						
Analyte	Result	Reporting Limit	Analyzed	Method Blank	BS	% Recovery	True Value QC	RPD	Qualifier	
Chloride	32.0	16.0	12/08/2023	ND	400	100	400	7.69		

TPH 8015M		mg/kg		Analyzed By: MS					
Analyte	Result	Reporting Limit	Analyzed	Method Blank	BS	% Recovery	True Value QC	RPD	Qualifier
GRO C6-C10*	<10.0	10.0	12/08/2023	ND	182	91.2	200	0.765	
DRO >C10-C28*	<10.0	10.0	12/08/2023	ND	183	91.5	200	2.20	
EXT DRO >C28-C36	<10.0	10.0	12/08/2023	ND					

Surrogate: 1-Chlorooctane 92.5 % 48.2-134

Surrogate: 1-Chlorooctadecane 86.6 % 49.1-148

Cardinal Laboratories

\*=Accredited Analyte

PLEASE NOTE: Liability and Damages. Cardinal's liability and client's exclusive remedy for any claim arising, whether based in contract or tort, shall be limited to the amount paid by client for analyses. All claims, including those for negligence and any other cause whatsoever shall be deemed waived unless made in writing and received by Cardinal within thirty (30) days after completion of the applicable service. In no event shall Cardinal be liable for incidental or consequential damages, including, without limitation, business interruptions, loss of use, or loss of profits incurred by client, its subsidiaries, affiliates or successors arising out of or related to the performance of the services hereunder by Cardinal, regardless of whether such claim is based upon any of the above stated reasons or otherwise. Results relate only to the samples identified above. This report shall not be reproduced except in full with written approval of Cardinal Laboratories.

Celey D. Keene, Lab Director/Quality Manager



PHONE (575) 393-2326 ° 101 E. MARLAND ° HOBBS, NM 88240

**Analytical Results For:**

TETRA TECH  
 SAM ABBOTT  
 901 WEST WALL STREET , STE 100  
 MIDLAND TX, 79701  
 Fax To: (432) 682-3946

Received:	12/07/2023	Sampling Date:	12/07/2023
Reported:	12/12/2023	Sampling Type:	Soil
Project Name:	ALBATROSS STATE COM #002H FWKO R	Sampling Condition:	Cool & Intact
Project Number:	212C - MD - 03289	Sample Received By:	Tamara Oldaker
Project Location:	COP - LEA CO NM		

**Sample ID: H - 2 ( 0-1' ) (H236579-02)**

BTEX 8021B		mg/kg		Analyzed By: JH/					
Analyte	Result	Reporting Limit	Analyzed	Method Blank	BS	% Recovery	True Value QC	RPD	Qualifier
Benzene*	<0.050	0.050	12/08/2023	ND	1.95	97.6	2.00	8.21	
Toluene*	<0.050	0.050	12/08/2023	ND	1.98	99.2	2.00	8.13	
Ethylbenzene*	<0.050	0.050	12/08/2023	ND	1.99	99.6	2.00	8.14	
Total Xylenes*	<0.150	0.150	12/08/2023	ND	5.91	98.5	6.00	8.22	
Total BTEX	<0.300	0.300	12/08/2023	ND					

Surrogate: 4-Bromofluorobenzene (PID) 112 % 71.5-134

Chloride, SM4500Cl-B		mg/kg		Analyzed By: HM						
Analyte	Result	Reporting Limit	Analyzed	Method Blank	BS	% Recovery	True Value QC	RPD	Qualifier	
Chloride	<16.0	16.0	12/08/2023	ND	400	100	400	7.69		

TPH 8015M		mg/kg		Analyzed By: MS					
Analyte	Result	Reporting Limit	Analyzed	Method Blank	BS	% Recovery	True Value QC	RPD	Qualifier
GRO C6-C10*	<10.0	10.0	12/08/2023	ND	182	91.2	200	0.765	
DRO >C10-C28*	<10.0	10.0	12/08/2023	ND	183	91.5	200	2.20	
EXT DRO >C28-C36	<10.0	10.0	12/08/2023	ND					

Surrogate: 1-Chlorooctane 103 % 48.2-134

Surrogate: 1-Chlorooctadecane 97.1 % 49.1-148

Cardinal Laboratories

\*=Accredited Analyte

PLEASE NOTE: Liability and Damages. Cardinal's liability and client's exclusive remedy for any claim arising, whether based in contract or tort, shall be limited to the amount paid by client for analyses. All claims, including those for negligence and any other cause whatsoever shall be deemed waived unless made in writing and received by Cardinal within thirty (30) days after completion of the applicable service. In no event shall Cardinal be liable for incidental or consequential damages, including, without limitation, business interruptions, loss of use, or loss of profits incurred by client, its subsidiaries, affiliates or successors arising out of or related to the performance of the services hereunder by Cardinal, regardless of whether such claim is based upon any of the above stated reasons or otherwise. Results relate only to the samples identified above. This report shall not be reproduced except in full with written approval of Cardinal Laboratories.

Celey D. Keene, Lab Director/Quality Manager





PHONE (575) 393-2326 ° 101 E. MARLAND ° HOBBS, NM 88240

**Analytical Results For:**

TETRA TECH  
 SAM ABBOTT  
 901 WEST WALL STREET , STE 100  
 MIDLAND TX, 79701  
 Fax To: (432) 682-3946

Received:	12/07/2023	Sampling Date:	12/07/2023
Reported:	12/12/2023	Sampling Type:	Soil
Project Name:	ALBATROSS STATE COM #002H FWKO R	Sampling Condition:	Cool & Intact
Project Number:	212C - MD - 03289	Sample Received By:	Tamara Oldaker
Project Location:	COP - LEA CO NM		

**Sample ID: H - 3 ( 0-1' ) (H236579-03)**

BTX 8021B		mg/kg		Analyzed By: JH/						
Analyte	Result	Reporting Limit	Analyzed	Method Blank	BS	% Recovery	True Value QC	RPD	Qualifier	
Benzene*	<0.050	0.050	12/08/2023	ND	1.95	97.6	2.00	8.21		
Toluene*	<0.050	0.050	12/08/2023	ND	1.98	99.2	2.00	8.13		
Ethylbenzene*	<0.050	0.050	12/08/2023	ND	1.99	99.6	2.00	8.14		
Total Xylenes*	<0.150	0.150	12/08/2023	ND	5.91	98.5	6.00	8.22		
Total BTX	<0.300	0.300	12/08/2023	ND						

Surrogate: 4-Bromofluorobenzene (PID) 112 % 71.5-134

Chloride, SM4500CI-B		mg/kg		Analyzed By: AC						
Analyte	Result	Reporting Limit	Analyzed	Method Blank	BS	% Recovery	True Value QC	RPD	Qualifier	
Chloride	<16.0	16.0	12/08/2023	ND	432	108	400	0.00		

TPH 8015M		mg/kg		Analyzed By: MS					
Analyte	Result	Reporting Limit	Analyzed	Method Blank	BS	% Recovery	True Value QC	RPD	Qualifier
GRO C6-C10*	<10.0	10.0	12/08/2023	ND	182	91.2	200	0.765	
DRO >C10-C28*	<10.0	10.0	12/08/2023	ND	183	91.5	200	2.20	
EXT DRO >C28-C36	<10.0	10.0	12/08/2023	ND					

Surrogate: 1-Chlorooctane 100 % 48.2-134

Surrogate: 1-Chlorooctadecane 94.1 % 49.1-148

Cardinal Laboratories

\*=Accredited Analyte

PLEASE NOTE: Liability and Damages. Cardinal's liability and client's exclusive remedy for any claim arising, whether based in contract or tort, shall be limited to the amount paid by client for analyses. All claims, including those for negligence and any other cause whatsoever shall be deemed waived unless made in writing and received by Cardinal within thirty (30) days after completion of the applicable service. In no event shall Cardinal be liable for incidental or consequential damages, including, without limitation, business interruptions, loss of use, or loss of profits incurred by client, its subsidiaries, affiliates or successors arising out of or related to the performance of the services hereunder by Cardinal, regardless of whether such claim is based upon any of the above stated reasons or otherwise. Results relate only to the samples identified above. This report shall not be reproduced except in full with written approval of Cardinal Laboratories.

Celey D. Keene, Lab Director/Quality Manager



PHONE (575) 393-2326 ° 101 E. MARLAND ° HOBBS, NM 88240

**Analytical Results For:**

TETRA TECH  
 SAM ABBOTT  
 901 WEST WALL STREET , STE 100  
 MIDLAND TX, 79701  
 Fax To: (432) 682-3946

Received:	12/07/2023	Sampling Date:	12/07/2023
Reported:	12/12/2023	Sampling Type:	Soil
Project Name:	ALBATROSS STATE COM #002H FWKO R	Sampling Condition:	Cool & Intact
Project Number:	212C - MD - 03289	Sample Received By:	Tamara Oldaker
Project Location:	COP - LEA CO NM		

**Sample ID: H - 4 ( 0-1' ) (H236579-04)**

BTEx 8021B		mg/kg		Analyzed By: JH/					
Analyte	Result	Reporting Limit	Analyzed	Method Blank	BS	% Recovery	True Value QC	RPD	Qualifier
Benzene*	<0.050	0.050	12/08/2023	ND	1.95	97.6	2.00	8.21	
Toluene*	<0.050	0.050	12/08/2023	ND	1.98	99.2	2.00	8.13	
Ethylbenzene*	<0.050	0.050	12/08/2023	ND	1.99	99.6	2.00	8.14	
Total Xylenes*	<0.150	0.150	12/08/2023	ND	5.91	98.5	6.00	8.22	
Total BTEX	<0.300	0.300	12/08/2023	ND					

Surrogate: 4-Bromofluorobenzene (PID) 109 % 71.5-134

Chloride, SM4500Cl-B		mg/kg		Analyzed By: AC						
Analyte	Result	Reporting Limit	Analyzed	Method Blank	BS	% Recovery	True Value QC	RPD	Qualifier	
Chloride	<16.0	16.0	12/08/2023	ND	432	108	400	0.00		

TPH 8015M		mg/kg		Analyzed By: MS					
Analyte	Result	Reporting Limit	Analyzed	Method Blank	BS	% Recovery	True Value QC	RPD	Qualifier
GRO C6-C10*	<10.0	10.0	12/08/2023	ND	182	91.2	200	0.765	
DRO >C10-C28*	<10.0	10.0	12/08/2023	ND	183	91.5	200	2.20	
EXT DRO >C28-C36	<10.0	10.0	12/08/2023	ND					

Surrogate: 1-Chlorooctane 85.2 % 48.2-134

Surrogate: 1-Chlorooctadecane 80.6 % 49.1-148

Cardinal Laboratories

\*=Accredited Analyte

PLEASE NOTE: Liability and Damages. Cardinal's liability and client's exclusive remedy for any claim arising, whether based in contract or tort, shall be limited to the amount paid by client for analyses. All claims, including those for negligence and any other cause whatsoever shall be deemed waived unless made in writing and received by Cardinal within thirty (30) days after completion of the applicable service. In no event shall Cardinal be liable for incidental or consequential damages, including, without limitation, business interruptions, loss of use, or loss of profits incurred by client, its subsidiaries, affiliates or successors arising out of or related to the performance of the services hereunder by Cardinal, regardless of whether such claim is based upon any of the above stated reasons or otherwise. Results relate only to the samples identified above. This report shall not be reproduced except in full with written approval of Cardinal Laboratories.

Celey D. Keene, Lab Director/Quality Manager



PHONE (575) 393-2326 ° 101 E. MARLAND ° HOBBS, NM 88240

**Analytical Results For:**

TETRA TECH  
 SAM ABBOTT  
 901 WEST WALL STREET , STE 100  
 MIDLAND TX, 79701  
 Fax To: (432) 682-3946

Received:	12/07/2023	Sampling Date:	12/07/2023
Reported:	12/12/2023	Sampling Type:	Soil
Project Name:	ALBATROSS STATE COM #002H FWKO R	Sampling Condition:	Cool & Intact
Project Number:	212C - MD - 03289	Sample Received By:	Tamara Oldaker
Project Location:	COP - LEA CO NM		

**Sample ID: H - 5 ( 0-1' ) (H236579-05)**

BTEx 8021B		mg/kg		Analyzed By: JH/						
Analyte	Result	Reporting Limit	Analyzed	Method Blank	BS	% Recovery	True Value QC	RPD	Qualifier	
Benzene*	<0.050	0.050	12/08/2023	ND	1.95	97.6	2.00	8.21		
Toluene*	<0.050	0.050	12/08/2023	ND	1.98	99.2	2.00	8.13		
Ethylbenzene*	<0.050	0.050	12/08/2023	ND	1.99	99.6	2.00	8.14		
Total Xylenes*	<0.150	0.150	12/08/2023	ND	5.91	98.5	6.00	8.22		
Total BTEX	<0.300	0.300	12/08/2023	ND						

Surrogate: 4-Bromofluorobenzene (PID) 112 % 71.5-134

Chloride, SM4500Cl-B		mg/kg		Analyzed By: AC						
Analyte	Result	Reporting Limit	Analyzed	Method Blank	BS	% Recovery	True Value QC	RPD	Qualifier	
Chloride	32.0	16.0	12/08/2023	ND	432	108	400	0.00		

TPH 8015M		mg/kg		Analyzed By: MS					
Analyte	Result	Reporting Limit	Analyzed	Method Blank	BS	% Recovery	True Value QC	RPD	Qualifier
GRO C6-C10*	<10.0	10.0	12/08/2023	ND	182	91.2	200	0.765	
DRO >C10-C28*	<10.0	10.0	12/08/2023	ND	183	91.5	200	2.20	
EXT DRO >C28-C36	<10.0	10.0	12/08/2023	ND					

Surrogate: 1-Chlorooctane 100 % 48.2-134

Surrogate: 1-Chlorooctadecane 94.9 % 49.1-148

Cardinal Laboratories

\*=Accredited Analyte

PLEASE NOTE: Liability and Damages. Cardinal's liability and client's exclusive remedy for any claim arising, whether based in contract or tort, shall be limited to the amount paid by client for analyses. All claims, including those for negligence and any other cause whatsoever shall be deemed waived unless made in writing and received by Cardinal within thirty (30) days after completion of the applicable service. In no event shall Cardinal be liable for incidental or consequential damages, including, without limitation, business interruptions, loss of use, or loss of profits incurred by client, its subsidiaries, affiliates or successors arising out of or related to the performance of the services hereunder by Cardinal, regardless of whether such claim is based upon any of the above stated reasons or otherwise. Results relate only to the samples identified above. This report shall not be reproduced except in full with written approval of Cardinal Laboratories.

Celey D. Keene, Lab Director/Quality Manager





---

PHONE (575) 393-2326 • 101 E. MARLAND • HOBBS, NM 88240

---

### Notes and Definitions

QM-07	The spike recovery was outside acceptance limits for the MS and/or MSD. The batch was accepted based on acceptable LCS recovery.
ND	Analyte NOT DETECTED at or above the reporting limit
RPD	Relative Percent Difference
**	Samples not received at proper temperature of 6°C or below.
***	Insufficient time to reach temperature.
-	Chloride by SM4500Cl-B does not require samples be received at or below 6°C Samples reported on an as received basis (wet) unless otherwise noted on report

---

Cardinal Laboratories

\*=Accredited Analyte

PLEASE NOTE: Liability and Damages. Cardinal's liability and client's exclusive remedy for any claim arising, whether based in contract or tort, shall be limited to the amount paid by client for analyses. All claims, including those for negligence and any other cause whatsoever shall be deemed waived unless made in writing and received by Cardinal within thirty (30) days after completion of the applicable service. In no event shall Cardinal be liable for incidental or consequential damages, including, without limitation, business interruptions, loss of use, or loss of profits incurred by client, its subsidiaries, affiliates or successors arising out of or related to the performance of the services hereunder by Cardinal, regardless of whether such claim is based upon any of the above stated reasons or otherwise. Results relate only to the samples identified above. This report shall not be reproduced except in full with written approval of Cardinal Laboratories.

A handwritten signature in black ink, appearing to read "C. D. Keene".

---

Celey D. Keene, Lab Director/Quality Manager

[illegible]FORM-006 R 3.2 10/07/12

† Cardinal cannot accept verbal changes. Please email changes to [celey.keene@cardinallabsnm.com](mailto:celey.keene@cardinallabsnm.com)

**District I**  
1625 N. French Dr., Hobbs, NM 88240  
Phone:(575) 393-6161 Fax:(575) 393-0720  
**District II**  
811 S. First St., Artesia, NM 88210  
Phone:(575) 748-1283 Fax:(575) 748-9720  
**District III**  
1000 Rio Brazos Rd., Aztec, NM 87410  
Phone:(505) 334-6178 Fax:(505) 334-6170  
**District IV**  
1220 S. St Francis Dr., Santa Fe, NM 87505  
Phone:(505) 476-3470 Fax:(505) 476-3462

**State of New Mexico**  
**Energy, Minerals and Natural Resources**  
**Oil Conservation Division**  
**1220 S. St Francis Dr.**  
**Santa Fe, NM 87505**

QUESTIONS  
  
Action 296767

QUESTIONS

Operator: COG OPERATING LLC 600 W Illinois Ave Midland, TX 79701	OGRID: 229137
	Action Number: 296767
	Action Type: [C-141] Remediation Closure Request C-141 (C-141-v-Closure)

QUESTIONS

<b>Prerequisites</b>	
Incident ID (n#)	nJXK1606034056
Incident Name	NJXK1606034056 ALBATROSS STATE COM #002H @ 30-025-41544
Incident Type	Oil Release
Incident Status	Remediation Closure Report Received
Incident Well	[30-025-41544] ALBATROSS STATE COM #002H

<b>Location of Release Source</b>	
<i>Please answer all the questions in this group.</i>	
Site Name	ALBATROSS STATE COM #002H
Date Release Discovered	02/09/2016
Surface Owner	State

<b>Incident Details</b>	
<i>Please answer all the questions in this group.</i>	
Incident Type	Oil Release
Did this release result in a fire or is the result of a fire	No
Did this release result in any injuries	No
Has this release reached or does it have a reasonable probability of reaching a watercourse	No
Has this release endangered or does it have a reasonable probability of endangering public health	No
Has this release substantially damaged or will it substantially damage property or the environment	No
Is this release of a volume that is or may with reasonable probability be detrimental to fresh water	No

<b>Nature and Volume of Release</b>	
<i>Material(s) released, please answer all that apply below. Any calculations or specific justifications for the volumes provided should be attached to the follow-up C-141 submission.</i>	
Crude Oil Released (bbls) Details	Cause: Equipment Failure   Separator   Crude Oil   Released: 20 BBL   Recovered: 5 BBL   Lost: 15 BBL.
Produced Water Released (bbls) Details	Not answered.
Is the concentration of chloride in the produced water >10,000 mg/l	Not answered.
Condensate Released (bbls) Details	Not answered.
Natural Gas Vented (Mcf) Details	Not answered.
Natural Gas Flared (Mcf) Details	Not answered.
Other Released Details	Not answered.
Are there additional details for the questions above (i.e. any answer containing Other, Specify, Unknown, and/or Fire, or any negative lost amounts)	Not answered.



**District I**

1625 N. French Dr., Hobbs, NM 88240  
Phone:(575) 393-6161 Fax:(575) 393-0720

**District II**

811 S. First St., Artesia, NM 88210  
Phone:(575) 748-1283 Fax:(575) 748-9720

**District III**

1000 Rio Brazos Rd., Aztec, NM 87410  
Phone:(505) 334-6178 Fax:(505) 334-6170

**District IV**

1220 S. St Francis Dr., Santa Fe, NM 87505  
Phone:(505) 476-3470 Fax:(505) 476-3462

**State of New Mexico**  
**Energy, Minerals and Natural Resources**  
**Oil Conservation Division**  
**1220 S. St Francis Dr.**  
**Santa Fe, NM 87505**

QUESTIONS, Page 2

Action 296767

**QUESTIONS (continued)**

Operator: COG OPERATING LLC 600 W Illinois Ave Midland, TX 79701	OGRID:	229137
	Action Number:	296767
	Action Type:	[C-141] Remediation Closure Request C-141 (C-141-v-Closure)

**QUESTIONS**

<b>Nature and Volume of Release (continued)</b>	
Is this a gas only submission (i.e. only significant Mcf values reported)	<b>No, according to supplied volumes this does not appear to be a "gas only" report.</b>
Was this a major release as defined by Subsection A of 19.15.29.7 NMAC	<b>No</b>
Reasons why this would be considered a submission for a notification of a major release	<i>Unavailable.</i>
<i>With the implementation of the 19.15.27 NMAC (05/25/2021), venting and/or flaring of natural gas (i.e. gas only) are to be submitted on the C-129 form.</i>	

**Initial Response**

*The responsible party must undertake the following actions immediately unless they could create a safety hazard that would result in injury.*

The source of the release has been stopped	<b>True</b>
The impacted area has been secured to protect human health and the environment	<b>True</b>
Released materials have been contained via the use of berms or dikes, absorbent pads, or other containment devices	<b>True</b>
All free liquids and recoverable materials have been removed and managed appropriately	<b>True</b>
If all the actions described above have not been undertaken, explain why	<i>Not answered.</i>

*Per Paragraph (4) of Subsection B of 19.15.29.8 NMAC the responsible party may commence remediation immediately after discovery of a release. If remediation has begun, please prepare and attach a narrative of actions to date in the follow-up C-141 submission. If remedial efforts have been successfully completed or if the release occurred within a lined containment area (see Subparagraph (a) of Paragraph (5) of Subsection A of 19.15.29.11 NMAC), please prepare and attach all information needed for closure evaluation in the follow-up C-141 submission.*

I hereby certify that the information given above is true and complete to the best of my knowledge and understand that pursuant to OCD rules and regulations all operators are required to report and/or file certain release notifications and perform corrective actions for releases which may endanger public health or the environment. The acceptance of a C-141 report by the OCD does not relieve the operator of liability should their operations have failed to adequately investigate and remediate contamination that pose a threat to groundwater, surface water, human health or the environment. In addition, OCD acceptance of a C-141 report does not relieve the operator of responsibility for compliance with any other federal, state, or local laws and/or regulations.

I hereby agree and sign off to the above statement	Name: Christian LLuLL Title: Project Manager Email: christian.llull@tetrattech.com Date: 12/20/2023
--	--

**District I**

1625 N. French Dr., Hobbs, NM 88240  
Phone:(575) 393-6161 Fax:(575) 393-0720

**District II**

811 S. First St., Artesia, NM 88210  
Phone:(575) 748-1283 Fax:(575) 748-9720

**District III**

1000 Rio Brazos Rd., Aztec, NM 87410  
Phone:(505) 334-6178 Fax:(505) 334-6170

**District IV**

1220 S. St Francis Dr., Santa Fe, NM 87505  
Phone:(505) 476-3470 Fax:(505) 476-3462

**State of New Mexico**  
**Energy, Minerals and Natural Resources**  
**Oil Conservation Division**  
**1220 S. St Francis Dr.**  
**Santa Fe, NM 87505**

QUESTIONS, Page 3

Action 296767

**QUESTIONS (continued)**

Operator: COG OPERATING LLC 600 W Illinois Ave Midland, TX 79701	OGRID:	229137
	Action Number:	296767
	Action Type:	[C-141] Remediation Closure Request C-141 (C-141-v-Closure)

**QUESTIONS****Site Characterization**

Please answer all the questions in this group (only required when seeking remediation plan approval and beyond). This information must be provided to the appropriate district office no later than 90 days after the release discovery date.

What is the shallowest depth to groundwater beneath the area affected by the release in feet below ground surface (ft bgs)	Between 75 and 100 (ft.)
What method was used to determine the depth to ground water	NM OSE iWaters Database Search
Did this release impact groundwater or surface water	No
<b>What is the minimum distance, between the closest lateral extents of the release and the following surface areas:</b>	
A continuously flowing watercourse or any other significant watercourse	Between 500 and 1000 (ft.)
Any lakebed, sinkhole, or playa lake (measured from the ordinary high-water mark)	Between 500 and 1000 (ft.)
An occupied permanent residence, school, hospital, institution, or church	Greater than 5 (mi.)
A spring or a private domestic fresh water well used by less than five households for domestic or stock watering purposes	Greater than 5 (mi.)
Any other fresh water well or spring	Greater than 5 (mi.)
Incorporated municipal boundaries or a defined municipal fresh water well field	Greater than 5 (mi.)
A wetland	Greater than 5 (mi.)
A subsurface mine	Greater than 5 (mi.)
An (non-karst) unstable area	Greater than 5 (mi.)
Categorize the risk of this well / site being in a karst geology	Low
A 100-year floodplain	Greater than 5 (mi.)
Did the release impact areas not on an exploration, development, production, or storage site	No

**Remediation Plan**

Please answer all the questions that apply or are indicated. This information must be provided to the appropriate district office no later than 90 days after the release discovery date.

Requesting a remediation plan approval with this submission	Yes
Attach a comprehensive report demonstrating the lateral and vertical extents of soil contamination associated with the release have been determined, pursuant to 19.15.29.11 NMAC and 19.15.29.13 NMAC.	
Have the lateral and vertical extents of contamination been fully delineated	Yes
Was this release entirely contained within a lined containment area	Yes
Per Subsection B of 19.15.29.11 NMAC unless the site characterization report includes completed efforts at remediation, the report must include a proposed remediation plan in accordance with 19.15.29.12 NMAC, which includes the anticipated timelines for beginning and completing the remediation.	
On what estimated date will the remediation commence	07/28/2018
On what date will (or did) the final sampling or liner inspection occur	12/07/2023
On what date will (or was) the remediation complete(d)	07/28/2018
What is the estimated surface area (in square feet) that will be remediated	0
What is the estimated volume (in cubic yards) that will be remediated	0
These estimated dates and measurements are recognized to be the best guess or calculation at the time of submission and may (be) change(d) over time as more remediation efforts are completed.	
The OCD recognizes that proposed remediation measures may have to be minimally adjusted in accordance with the physical realities encountered during remediation. If the responsible party has any need to significantly deviate from the remediation plan proposed, then it should consult with the division to determine if another remediation plan submission is required.	

**District I**

1625 N. French Dr., Hobbs, NM 88240  
Phone:(575) 393-6161 Fax:(575) 393-0720

**District II**

811 S. First St., Artesia, NM 88210  
Phone:(575) 748-1283 Fax:(575) 748-9720

**District III**

1000 Rio Brazos Rd., Aztec, NM 87410  
Phone:(505) 334-6178 Fax:(505) 334-6170

**District IV**

1220 S. St Francis Dr., Santa Fe, NM 87505  
Phone:(505) 476-3470 Fax:(505) 476-3462

**State of New Mexico**  
**Energy, Minerals and Natural Resources**  
**Oil Conservation Division**  
**1220 S. St Francis Dr.**  
**Santa Fe, NM 87505**

QUESTIONS, Page 4

Action 296767

**QUESTIONS (continued)**

Operator: COG OPERATING LLC 600 W Illinois Ave Midland, TX 79701	OGRID: 229137
	Action Number: 296767
	Action Type: [C-141] Remediation Closure Request C-141 (C-141-v-Closure)

**QUESTIONS****Remediation Plan (continued)**

*Please answer all the questions that apply or are indicated. This information must be provided to the appropriate district office no later than 90 days after the release discovery date.*

**This remediation will (or is expected to) utilize the following processes to remediate / reduce contaminants:**

*(Select all answers below that apply.)*

Is (or was) there affected material present needing to be removed	No
Is (or was) there a power wash of the lined containment area (to be) performed	Yes
OTHER (Non-listed remedial process)	Not answered.

*Per Subsection B of 19.15.29.11 NMAC unless the site characterization report includes completed efforts at remediation, the report must include a proposed remediation plan in accordance with 19.15.29.12 NMAC, which includes the anticipated timelines for beginning and completing the remediation.*

I hereby certify that the information given above is true and complete to the best of my knowledge and understand that pursuant to OCD rules and regulations all operators are required to report and/or file certain release notifications and perform corrective actions for releases which may endanger public health or the environment. The acceptance of a C-141 report by the OCD does not relieve the operator of liability should their operations have failed to adequately investigate and remediate contamination that pose a threat to groundwater, surface water, human health or the environment. In addition, OCD acceptance of a C-141 report does not relieve the operator of responsibility for compliance with any other federal, state, or local laws and/or regulations.

I hereby agree and sign off to the above statement	Name: Christian LLuLL Title: Project Manager Email: christian.llull@tetrattech.com Date: 12/20/2023
--	--

*The OCD recognizes that proposed remediation measures may have to be minimally adjusted in accordance with the physical realities encountered during remediation. If the responsible party has any need to significantly deviate from the remediation plan proposed, then it should consult with the division to determine if another remediation plan submission is required.*



**District I**

1625 N. French Dr., Hobbs, NM 88240  
Phone:(575) 393-6161 Fax:(575) 393-0720

**District II**

811 S. First St., Artesia, NM 88210  
Phone:(575) 748-1283 Fax:(575) 748-9720

**District III**

1000 Rio Brazos Rd., Aztec, NM 87410  
Phone:(505) 334-6178 Fax:(505) 334-6170

**District IV**

1220 S. St Francis Dr., Santa Fe, NM 87505  
Phone:(505) 476-3470 Fax:(505) 476-3462

**State of New Mexico**  
**Energy, Minerals and Natural Resources**  
**Oil Conservation Division**  
**1220 S. St Francis Dr.**  
**Santa Fe, NM 87505**

QUESTIONS, Page 6

Action 296767

**QUESTIONS (continued)**

Operator: COG OPERATING LLC 600 W Illinois Ave Midland, TX 79701	OGRID:	229137
	Action Number:	296767
	Action Type:	[C-141] Remediation Closure Request C-141 (C-141-v-Closure)

**QUESTIONS**

<b>Liner Inspection Information</b>	
Last liner inspection notification (C-141L) recorded	<b>290954</b>
Liner inspection date pursuant to Subparagraph (a) of Paragraph (5) of Subsection A of 19.15.29.11 NMAC	<b>12/07/2023</b>
Was all the impacted materials removed from the liner	<b>Yes</b>
What was the liner inspection surface area in square feet	<b>5299</b>

**Remediation Closure Request**

*Only answer the questions in this group if seeking remediation closure for this release because all remediation steps have been completed.*

Requesting a remediation closure approval with this submission	<b>Yes</b>
Have the lateral and vertical extents of contamination been fully delineated	<b>Yes</b>
Was this release entirely contained within a lined containment area	<b>Yes</b>
What was the total surface area (in square feet) remediated	<b>0</b>
What was the total volume (cubic yards) remediated	<b>0</b>
Summarize any additional remediation activities not included by answers (above)	Based on the results of the soil assessment and liner inspection, Closure Report for the release is submitted. All soil sample analytical results were below reclamation requirements for soils.

*The responsible party must attach information demonstrating they have complied with all applicable closure requirements and any conditions or directives of the OCD. This demonstration should be in the form of a comprehensive report (in .pdf format) including a scaled site map, sampling diagrams, relevant field notes, photographs of any excavation prior to backfilling, laboratory data including chain of custody documents of final sampling, and a narrative of the remedial activities. Refer to 19.15.29.12 NMAC.*

I hereby certify that the information given above is true and complete to the best of my knowledge and understand that pursuant to OCD rules and regulations all operators are required to report and/or file certain release notifications and perform corrective actions for releases which may endanger public health or the environment. The acceptance of a C-141 report by the OCD does not relieve the operator of liability should their operations have failed to adequately investigate and remediate contamination that pose a threat to groundwater, surface water, human health or the environment. In addition, OCD acceptance of a C-141 report does not relieve the operator of responsibility for compliance with any other federal, state, or local laws and/or regulations. The responsible party acknowledges they must substantially restore, reclaim, and re-vegetate the impacted surface area to the conditions that existed prior to the release or their final land use in accordance with 19.15.29.13 NMAC including notification to the OCD when reclamation and re-vegetation are complete.

I hereby agree and sign off to the above statement	Name: Christian LLuLL Title: Project Manager Email: christian.llull@tetrattech.com Date: 12/20/2023
--	--

**District I**  
1625 N. French Dr., Hobbs, NM 88240  
Phone:(575) 393-6161 Fax:(575) 393-0720  
**District II**  
811 S. First St., Artesia, NM 88210  
Phone:(575) 748-1283 Fax:(575) 748-9720  
**District III**  
1000 Rio Brazos Rd., Aztec, NM 87410  
Phone:(505) 334-6178 Fax:(505) 334-6170  
**District IV**  
1220 S. St Francis Dr., Santa Fe, NM 87505  
Phone:(505) 476-3470 Fax:(505) 476-3462

**State of New Mexico**  
**Energy, Minerals and Natural Resources**  
**Oil Conservation Division**  
**1220 S. St Francis Dr.**  
**Santa Fe, NM 87505**

CONDITIONS  
  
Action 296767

**CONDITIONS**

Operator: COG OPERATING LLC 600 W Illinois Ave Midland, TX 79701	OGRID:
	229137
	Action Number:
	296767
Action Type: [C-141] Remediation Closure Request C-141 (C-141-v-Closure)	

**CONDITIONS**

Created By	Condition	Condition Date
amaxwell	Remediation Closure approved. All areas not reasonably needed for production or subsequent drilling operations will need to be reclaimed and revegetated as soon as practical. Areas reasonably needed for production or subsequent drilling operations will need to be reclaimed and revegetated as soon as they are no longer reasonably needed. A report for reclamation and revegetation will need to be submitted and approved prior to this incident receiving the final status of "Restoration Complete"	12/26/2023