

Frontier Field Services, LLC  
Cedar Breaks LH St. 1 6" Steel Line  
32.772122°, -103.948648°  
NMOCD Reference # nAPP2306238104  
Terracon Project # KH237028



Attn: New Mexico Oil Conservation Division  
1220 South St. Francis Drive  
Santa Fe, NM 87505

RE: Release Investigation, and Closure Report  
Cedar Breaks LH St. 1 6" Steel Line  
Unit M, Section 2, Township 18 South, Range 30 East  
32.772122°, -103.948648°  
Eddy County, New Mexico  
Terracon Project No. KH237028

To Whom It May Concern:

Terracon Consultants, Inc. (Terracon) is pleased to submit our Release Investigation and Closure Report for the site referenced above. The scope of services was developed in accordance with the New Mexico Oil Conservation Division (NMOCD) regulations concerning clean-up actions required for releases of crude oil and produced water. The investigative response actions were taken as the result of a natural gas and condensate release from a suspected corroded lateral line. The below sections detail Terracon's assessment and remediation actions in response to the noted release.

### Action Items

#### Completed Actions

- 1) Initial site assessment and sampling events completed.
- 2) All conditions needed for approval of closure have been met.
- 3) All Maps and associated data for approval have been provided
- 4) Conducted an initial site assessment and a series of confirmation sampling events.
- 5) Soil samples collected from the excavation were submitted to an approved Lab to determine levels of impact vertically and horizontally.
- 6) Excavation of the inferred release area was completed with the intent to remove impacted soil as determined by the Closure Criteria set by NMOCD.
- 7) All soil stockpiles on site were placed on plastic and bermed around the edges to reduce loss.
- 8) All confirmation samples were collected every 200 sq. ft.
- 9) Remedial activities were terminated when confirmation samples were collected below the NMOCD Remediation Action Levels (RALs) for Oil and Gas impacted soils.

**Frontier Field Services, LLC**  
Cedar Breaks LH St. 1 6" Steel Line  
32.772053°, -103.948920°  
NMOCD Reference # nAPP2306238104  
Terracon Project # KH237028



**Anticipated Actions**

- 
- 1) Following the completion of remedial activities all areas of the excavation activities will be backfilled and brought to the surrounding grade and reseeded.
  - 2) Approval by the NMOCD.
- 

Terracon appreciates this opportunity to provide environmental services to Frontier Field Services, LLC (Durango). Should you have any questions or require additional information, please do not hesitate to contact our office.

Sincerely,  
**Terracon Consultants, Inc.**

A handwritten signature in black ink, appearing to read 'Travis Casey', written over the printed name.

**Travis Casey**  
Senior Staff Scientist  
Carlsbad

A handwritten signature in blue ink, appearing to read 'Erin Loyd', written over the printed name.

**Erin Loyd, P.G. (TX)**  
Senior Principal  
Office Manager – Lubbock

TABLE OF CONTENTS

Table of Contents

Section 1 – Incident Information .....	2
Section 2 – General Site Characteristics .....	3
Section 3 – Regulatory Framework and Response Action Levels.....	4
Section 4 – Remediation Activities .....	5
Section 5 - Remediation Confirmation Assessment.....	5
Section 6 – Analytical Results .....	5
Section 7 – Conclusion and Closure Request .....	5

Attachments:

Appendix A – Exhibits

Exhibit 1 – Topographic Map

Exhibit 2 – Site Location Map

Exhibit 3 – Site Sample Map

Exhibit 4 – NMOSE POD Location Map

Exhibit 5 – Designated Wetland Map

Exhibit 6 – Cave Karst Public UCP Map

Appendix B – Tables, Procedures, and Figures

Table 1 – Soil Sample Analytical Results

Appendix C – Photographic Log

Appendix D – Analytical Report and Chain of Custody

Appendix E – Initial Form C-141 & Final C-141

Appendix F – Terracon Standard of Care, Limitation, and Reliance

Frontier Field Services, LLC  
 Cedar Breaks LH St. 1 6" Steel Line  
 32.772122°, -103.948648°  
 NMOCD Reference # nAPP2306238104  
 Terracon Project # KH237028



## Section 1 – Incident Information

The following table provides detailed information regarding the March 2, 2023, natural gas, and condensate release at the Cedar Breaks LH St. 1 6" Steel Line (Cedar Breaks LH) site in Eddy County, New Mexico:

Required Information	Site and Release information	
Responsible party	The pipeline is operated by Frontier Field Services, LLC.	
Local contact	Contact: Mr. Chad Frost	P: (575)-703-1804 E: <a href="mailto:cfrost@durangomidstream.com">cfrost@durangomidstream.com</a>
NMOCD Notification	Notice of the release was provided to the NMOCD District 2 Artesia Office by Ms. Amber Groves on March 2, 2023. NMOCD Reference ID: nAPP2306238104	
Facility Description	Cedar Breaks Walters is in Eddy County, New Mexico. It is an area located within Unit M, Section 2, Township 18 South, Range 30 East, approximately 12.32 miles southwest of Maljamar, New Mexico. The site is predominantly developed oil and gas Right of Way (ROW). State Land Office (SLO) owned native pastureland.	
Time of incident	March 2, 2023, discovered during third-party excavation.	
Discharge event	The natural gas pipeline leak was caused by external and internal corrosion. The Site is illustrated in Exhibits 1 and 2 of Appendix A	
Type of discharge	The documented natural gas release occurred in a ROW, SLO-owned, native pastureland area. Soils at the site are affected at the surface and beyond the depth of the pipeline.	
Quantity of spilled material	Total Fluids: 1.53 bbls	Natural Gas: 111.55 Mcf
Site characteristics	Relatively flat with drainage following the natural ground surface; very gently sloping to the southeast.	
Immediate corrective actions	The leaking pipeline was closed in at the nearest isolation valve, blown down, and clamped. A backhoe was utilized to excavate impacted soils around the line strike to discover the source of the release.	



Frontier Field Services, LLC  
 Cedar Breaks LH St. 1 6" Steel Line  
 32.772122°, -103.948648°  
 NMOCD Reference # nAPP2306238104  
 Terracon Project # KH237028



## Section 2 – General Site Characteristics

Physical Characteristic	Site Ranking Characteristics
Groundwater NMOSE POD Location Map – (Exhibit 6 in Appendix A)	<p><u>POD Number:</u> (RA-11914 POD 1)</p> <p><u>Depth to Groundwater:</u> 80 ft. bgs</p> <p><u>Distance to Well:</u> 4.14 miles to the northwest</p> <p><u>Date Drilled:</u> March 19, 2013</p> <p><u>Groundwater Quality:</u> Groundwater quality at the site is predominately used for exploratory reasons.</p>
Surface Water NM Wetland Map – (Exhibit 7 in Appendix A)	Salt Lake (Cedar Lake), is approximately 2.00 miles to the northeast.
100-Year Flood Plain	This site is located outside the 100-year flood plain of the Pecos River.
Soil Characteristics	Soils at the site are mapped as Kermit-Berino Fine Sand series soils, 0 to 3 percent slopes, well-drained, 4 to 12 inches single-grained; loose; few fine roots; very porous; few dark organic stains; noncalcareous; neutral; gradual smooth boundary. (6 to 12 inches thick). The formation is categorized with a very high runoff classification.
Karst Characterization Cave Karst Public UCP Map – (Exhibit 8 in Appendix A)	Terracon evaluated data from the NMOCD Public UCP Site, Karst map designations in reference to the site location. The site appears to be within a low-level Karst risk area. Based on on-site observations within the extent of the release margins the potential for Karst formations in this specific area are of low potential. Restrictive features were not encountered from surface to 60 inches below grade surface (bgs) within the release margins. The full extent of release quantities and excavation activities did not extend greater than 60 inches bgs.

Frontier Field Services, LLC  
 Cedar Breaks LH St. 1 6" Steel Line  
 32.772122°, -103.948648°  
 NMOCD Reference # nAPP2306238104  
 Terracon Project # KH237028



### Section 3 – Regulatory Framework and Response Action Levels

Oil and gas exploration and production facilities in New Mexico are generally regulated by the New Mexico Oil Conservation Division (NMOCD). The NMOCD has issued the *Closure Criteria for Soils Impacted by a Release, June 21, 2018*, and *Restoration, Reclamation, and Re-vegetation (19.15.29.13) NMAC – D (Reclamation of areas no longer in use)* as guidance documents for the remediation and reclamation of sites impacted by releases from oil and gas exploration and production activities. Sections detailed below the applicability of these guidance documents to the site-specific characteristics associated with the Cedar Breaks LH.

#### Section 3.1 – Reclamation Levels (Surface to 4 ft. bgs)

The below Reclamation Limits for chlorides, TPH (GRO+DRO+MRO), BTEX (includes benzene, toluene, ethylbenzene, and xylenes), and benzene are defined within the New Mexico Administration Code (NMAC) *Restoration, Reclamation, and Re-vegetation (19.15.29.13) New Mexico Administration Code (NMAC) – D (Reclamation of areas no longer in use)* for soils extending to 4 ft. bgs.:

Constituent	Remediation Limits
Chloride	600 mg/kg
TPH (GRO+DRO+MRO)	100 mg/kg
BTEX	50 mg/kg
Benzene	10 mg/kg

#### Section 3.2 – Remediation Levels (> 4 ft. bgs)

Based on the site-specific characteristics, the applicable NMOCD remediation levels for Total BTEX, chloride, and TPH within soils, exclusive of the Reclamation Zone (surface to 4 ft. bgs), are as follows:

Constituent	Remediation Limit
Chloride	600 mg/kg
TPH (GRO+DRO+MRO)	100 mg/kg
BTEX	50 mg/kg
Benzene	10 mg/kg

Frontier Field Services, LLC  
Cedar Breaks LH St. 1 6" Steel Line  
32.772122°, -103.948648°  
NMOCD Reference # nAPP2306238104  
Terracon Project # KH237028



## Section 4 – Remediation Activities

On March 29, 2023, Terracon mobilized to the site to perform soil remediation activities. Areas exhibiting visual impact were excavated to a depth of approximately 4 to 5 feet bgs.

Approximately 20 cubic yards of soil were excavated and stockpiled atop a polyethylene liner pending waste characterization and disposal under an approved Form C-138. Excavation efforts ceased based on the results of removing visual impacts. Excavated materials were disposed of at Lea Land Landfill.

## Section 5 - Remediation Confirmation Assessment

A total of 5 composite soil samples (N-SW, S-SW, E-SW, W-SW, and FS-01) were collected from the excavation, placed in laboratory-provided sample containers, preserved with ice, and transported under a chain of custody to Cardinal Laboratories in Hobbs, New Mexico for analysis of BTEX, TPH, and chlorides.

## Section 6 – Analytical Results

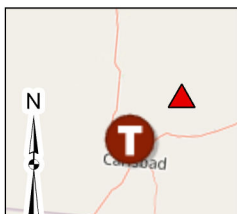
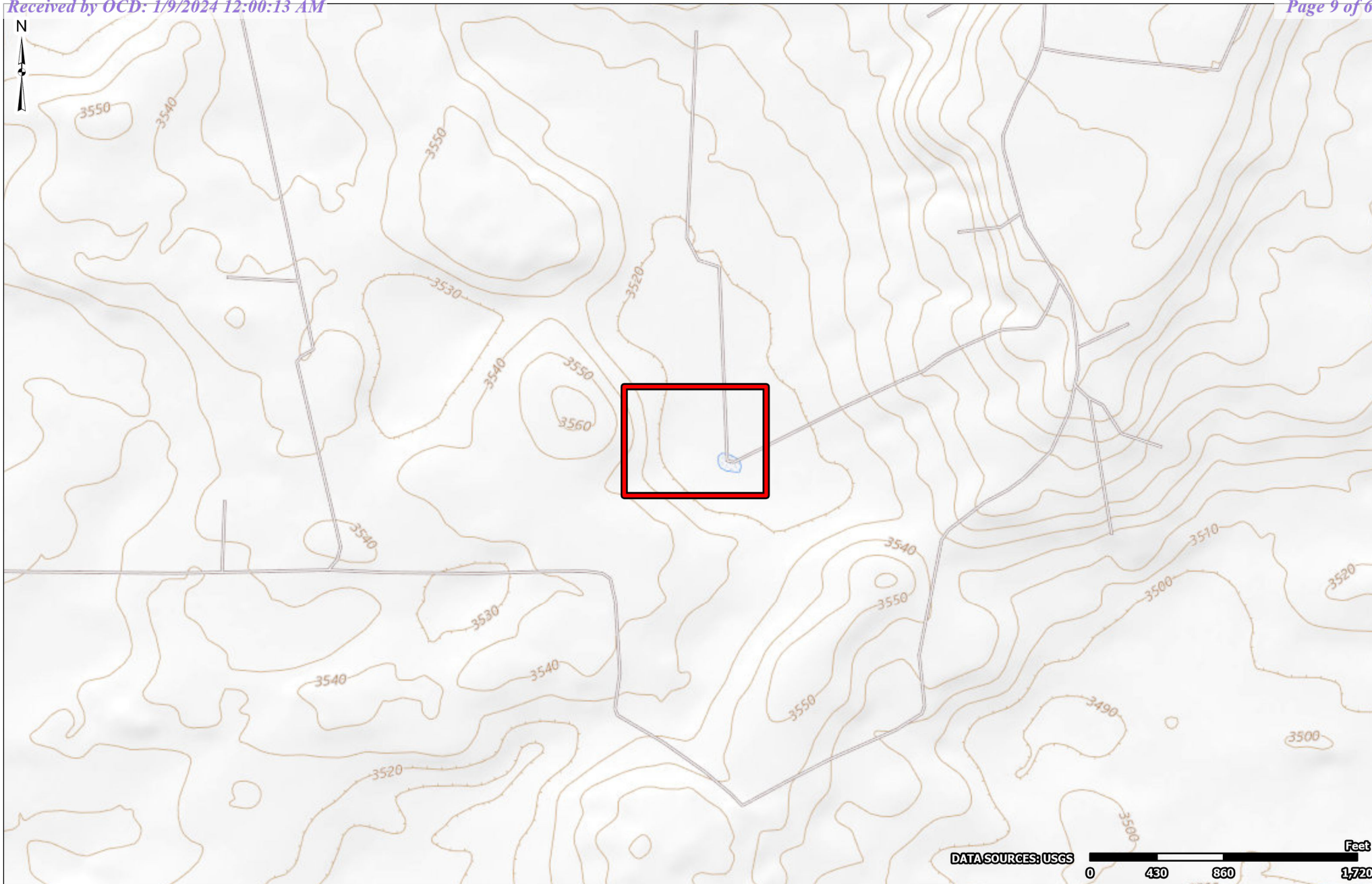
On March 29, 2023, five composite samples were collected, and three of the samples exhibited concentrations of TPH above the laboratory SDLs. Of the three samples above the laboratory SDLs, one sample E-SW (surface to 5 ft bgs) was above the NMOCD RAL for TPH of 100 mg/kg. Following additional remedial activities, the sampling event on April 11 & December 01, 2023 resulted in concentrations of TPH below laboratory SDLs and under the NMOCD RAL closure criteria.

All soil samples collected from the excavation area exhibited concentrations of chloride below the NMOCD RAL closure criteria of 600 mg/kg and ranging from <16.0 mg/kg in E-SW 1.2 and S-SW 1.2 (surface to 5 ft bgs) to 80 mg/kg in N-SW (surface to 5 ft bgs).

A summary of BTEX, chloride, and TPH concentrations of all collected soil samples is attached as Table 1.

In accordance with NMAC 19.15.29.12, remediation of the impacted material is complete, and Terracon along with Frontier Field Services respectfully requests closure of the incident nAPP2306238104.

## **APPENDIX A – EXHIBITS**



 Site Location

Project No.:  
KH237028

Date:  
Nov 2023

Drawn By:  
JWL

Reviewed By:  
JRG



4526 W Pierce St  
Carlsbad, NM

PH. 806-300-0140

terracon.com

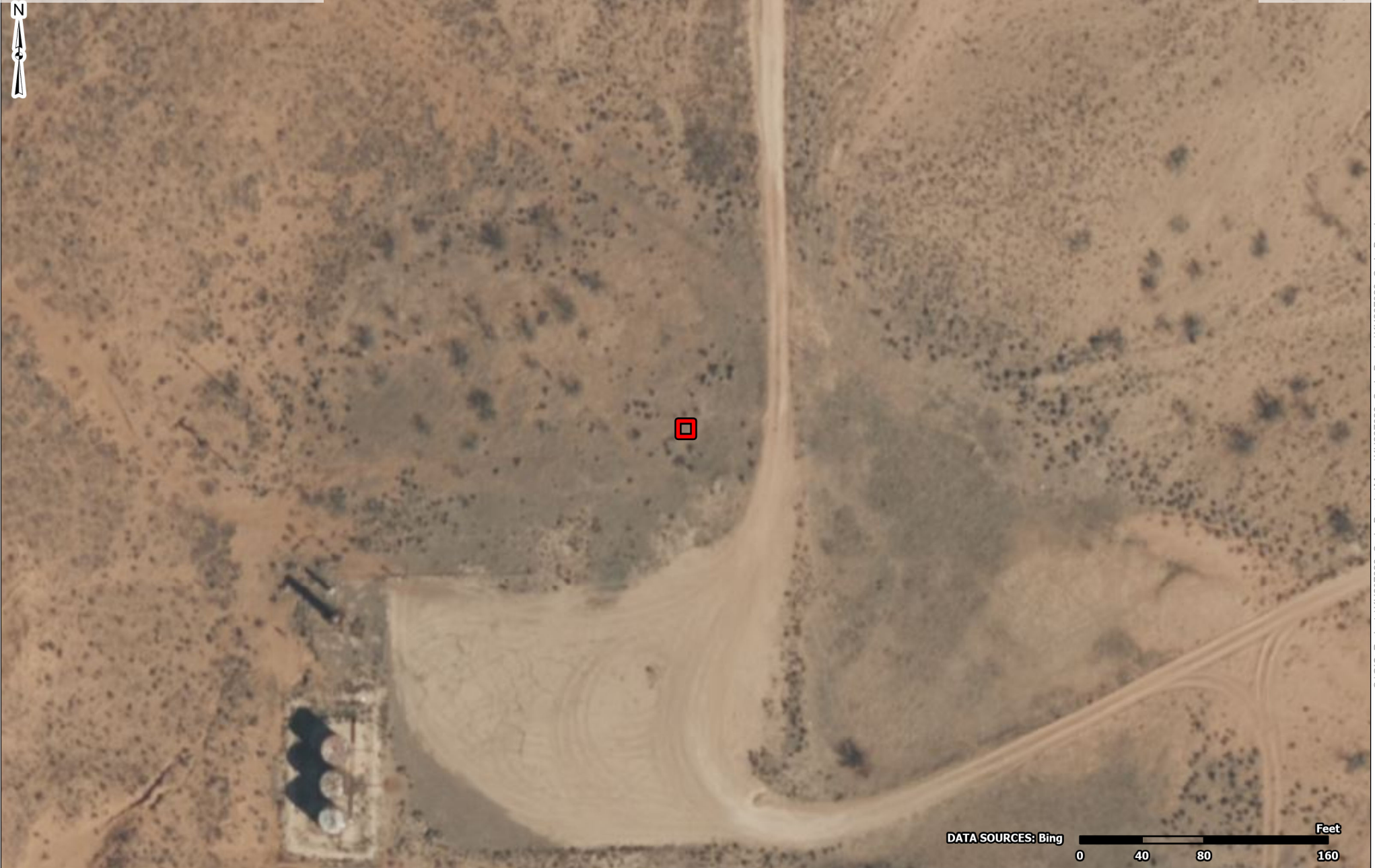
### Topographic Map

Cedar Breaks LH St. 1 6" Steel  
-103.9488252, 32.7720848  
Eddy County, New Mexico

### Exhibit

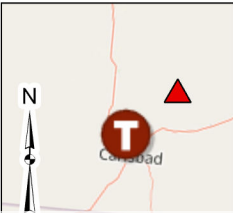
1





DATA SOURCES: Bing

0 40 80 160 Feet




 Excavation Border

Project No.:  
KH237028

Date:  
Nov 2023

Drawn By:  
JWL

Reviewed By:  
JRG



**Terracon**

4526 W Pierce St  
Carlsbad, NM

PH. 806-300-0140      terracon.com

**Site Location Map**

Cedar Breaks LH St. 1 6" Steel  
-103.9488252, 32.7720848  
Eddy County, New Mexico

**Exhibit**

**2**

3

W-SW  
03/29/2023  
0-5' Comp. Sample  
Chloride: 16.0  
BTEX: <0.300  
TPH: 15.8

W-SW 1.3  
12/01/2023  
0-5' Comp. Sample  
Chloride: <16.0  
BTEX: <0.300  
TPH: <0.10

S-SW  
03/29/2023  
0-5' Comp. Sample  
Chloride: 48.0  
BTEX: <0.300  
TPH: **98.1**

S-SW 1.2  
04/11/2023  
0-5' Comp. Sample  
Chloride: <16.0  
BTEX: <0.300  
TPH: <0.10

S-SW 1.3  
12/01/2023  
0-5' Comp. Sample  
Chloride: <16.0  
BTEX: <0.300  
TPH: <0.10

FS-01  
03/29/2023  
5' Comp. Sample  
Chloride: 32.0  
BTEX: <0.300  
TPH: <0.10

N-SW  
03/29/2023  
0-5' Comp. Sample  
Chloride: 80.0  
BTEX: <0.300  
TPH: 39.7

N-SW 1.3  
12/01/2023  
0-5' Comp. Sample  
Chloride: 32.0  
BTEX: <0.300  
TPH: <0.10

E-SW  
03/29/2023  
0-5' Comp. Sample  
Chloride: 32.0  
BTEX: <0.300  
TPH: **101**

E-SW 1.2  
04/11/2023  
0-5' Comp. Sample  
Chloride: <16.0  
BTEX: <0.300  
TPH: <0.10

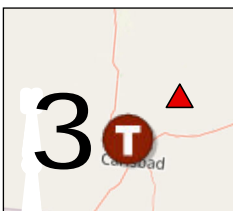
E-SW 1.3  
12/01/2023  
0-5' Comp. Sample  
Chloride: <16.0  
BTEX: <0.300  
TPH: <0.10

NMOCD RAL =  
600 mg/kg for Chloride  
100 mg/kg for Total TPH  
50 mg/kg for BTEX

**Bold and Highlighted denote concentrations that exceed the NMOCD Reclamation and/or Remediation and Delineation Standards**

DATA SOURCES: Bing

0 25 50 100 Feet



 Excavation Border

 Sample Location

U  
U

Project No.:  
KH237028

Date:  
Dec 2023

Drawn By:  
JWL

Reviewed By:  
JRG



4526 W Pierce St  
Carlsbad, NM

PH. 806-300-0140

terracon.com

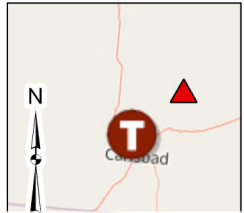
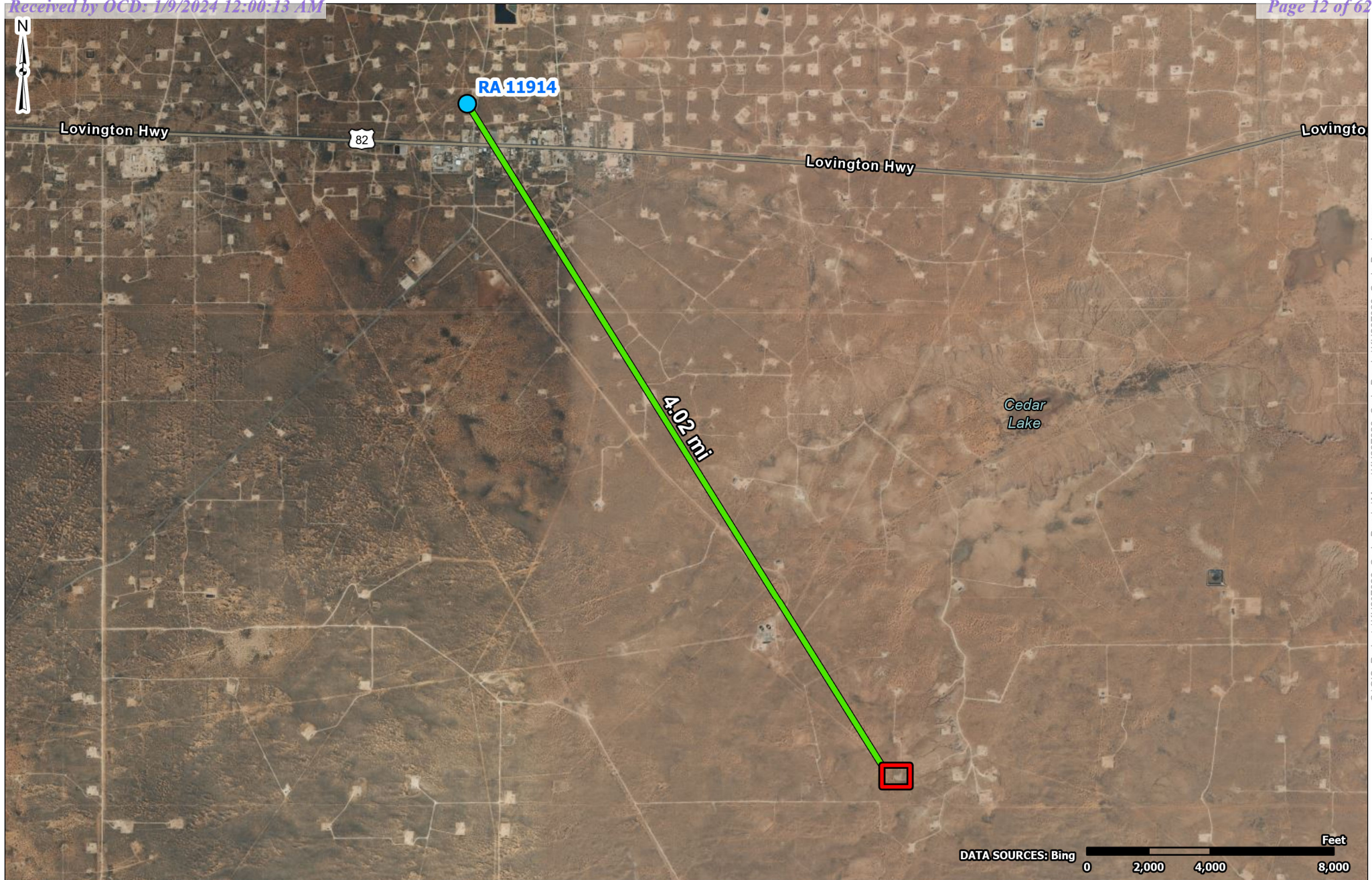
### Site Sample Map

Cedar Breaks LH St. 1 6" Steel  
-103.9488252, 32.7720848  
Eddy County, New Mexico

### Exhibit

3





- NMOSE POD Locations
- Site Location

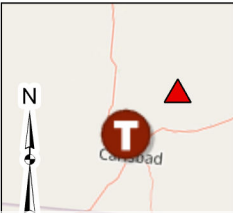
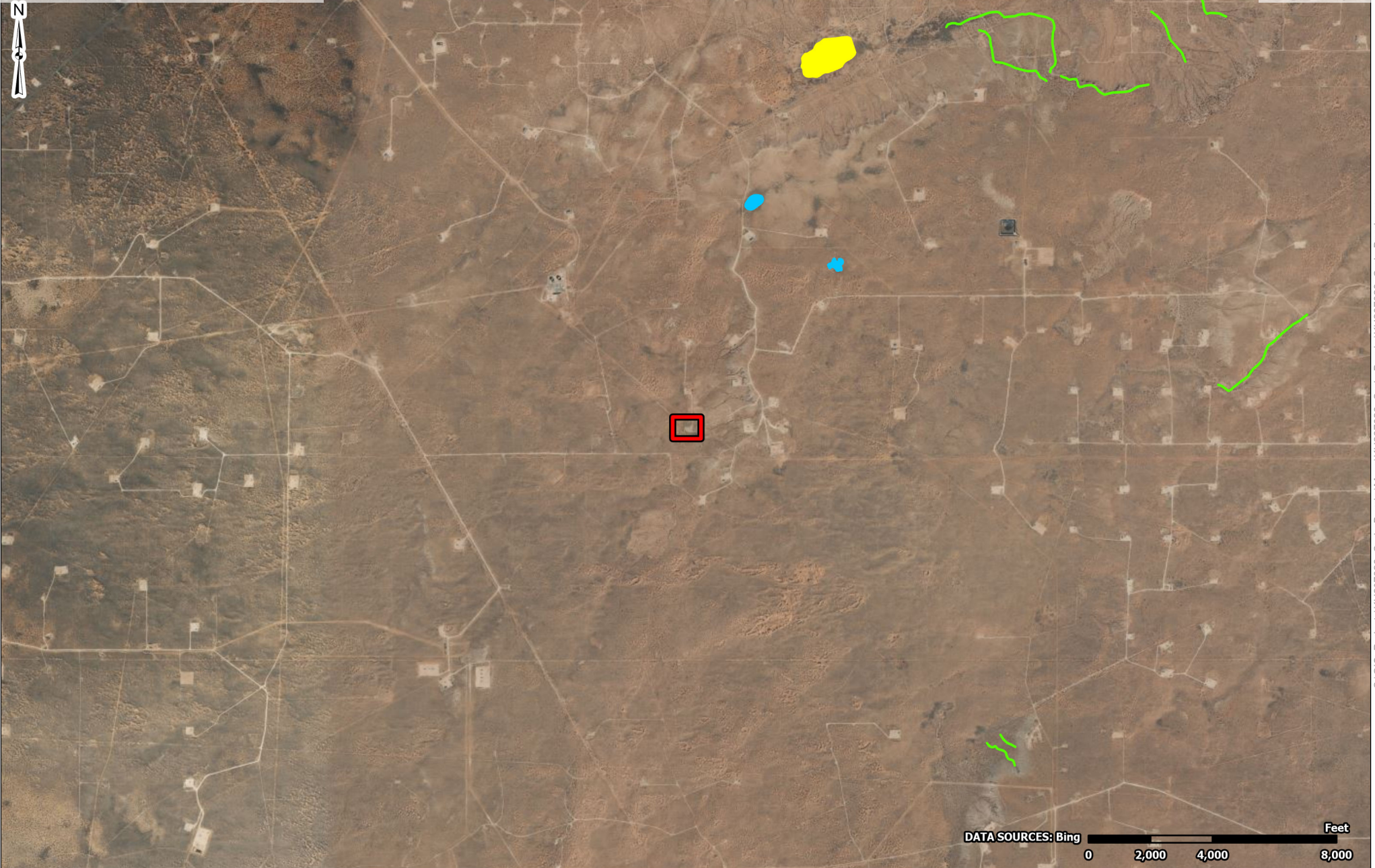
Project No.: KH237028  
Date: Nov 2023  
Drawn By: JWL  
Reviewed By: JRG

**Terracon**  
4526 W Pierce St  
Carlsbad, NM  
PH. 806-300-0140 terracon.com

**NMOSE POD Location Map**  
Cedar Breaks LH St. 1 6" Steel  
-103.9488252, 32.7720848  
Eddy County, New Mexico


**Exhibit**  
  
**4**





- Site Location
- Freshwater Emergent Wetland
- Lake
- Riverine

Project No.:  
KH237028  
Date:  
Nov 2023  
Drawn By:  
JWL  
Reviewed By:  
JRG



4526 W Pierce St  
Carlsbad, NM  
PH. 806-300-0140      terracon.com

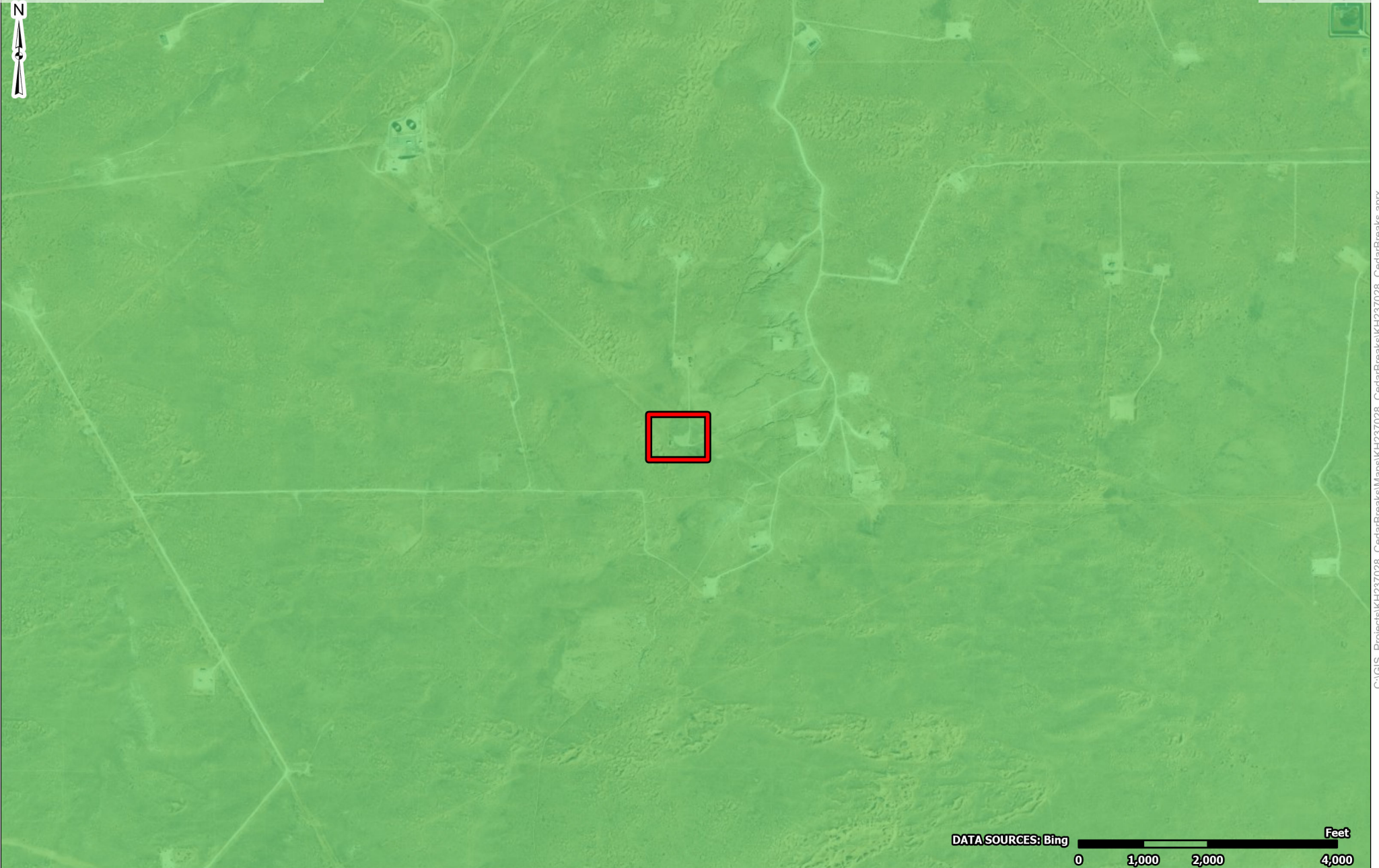
**Designated Wetland Area Map**

Cedar Breaks LH St. 1 6" Steel  
-103.9488252, 32.7720848  
Eddy County, New Mexico

**Exhibit**

**5**

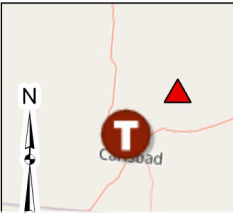




DATA SOURCES: Bing

0 1,000 2,000 4,000

Feet




 Site Location

Karst Potential

 Low

 Medium


 High

Project No.:  
KH237028

Date:  
Nov 2023

Drawn By:  
JWL

Reviewed By:  
JRG



**Terracon**

4526 W Pierce St  
Carlsbad, NM

PH. 806-300-0140      terracon.com

**Cave Karst Public UCP Map**

Cedar Breaks LH St. 1 6" Steel  
-103.9488252, 32.7720848  
Eddy County, New Mexico

**Exhibit**

**6**

## **APPENDIX B – TABLES, PROCEDURES, AND FIGURES**

**TABLE 1**  
**SOIL SAMPLE ANALYTICAL RESULTS - BTEX<sup>1</sup>, Chloride<sup>2</sup>, and TPH<sup>3</sup>**  
**Cedar Breaks LH St. 1 6" Steel Line**  
**Terracon Project No. KH237028**

Sample I.D.	Sample Depth (ft. bgs)	Sample Type	Sample Date	BTEX (mg/kg)		Chloride (mg/kg)	TPH (8015M)		
							(mg/kg)		
							GRO	DRO	EXT DRO
Initial Samples (On Pad)									
N-SW	0-5'	Comp	03/29/23	Benzene -	<0.050	80.0	<10.0	39.7	<10.0
				Total BTEX -	<0.300				
E-SW	0-5'	Comp	03/29/23	Benzene -	<0.050	32.0	<10.0	101	17.8
				Total BTEX -	<0.300				
E-SW1.2	0-5'	Comp	04/11/23	Benzene -	<0.050	<16.0	<10.0	<10.0	<10.0
				Total BTEX -	<0.300				
S-SW	0-5'	Comp	03/29/23	Benzene -	<0.050	48.0	<10.0	98.1	<10.0
				Total BTEX -	<0.300				
S-SW 1.2	0-5'	Comp	04/11/23	Benzene -	<0.050	<16.0	<10.0	<10.0	<10.0
				Total BTEX -	<0.300				
W-SW	0-5'	Comp	03/29/23	Benzene -	<0.050	16.0	<10.0	15.8	<10.0
				Total BTEX -	<0.300				
FS01	5'	Comp	03/29/23	Benzene -	<0.050	32.0	<10.0	<10.0	<10.0
				Total BTEX -	<0.300				
Confirmation Samples (On Pad)									
N-SW	0-5'	Comp	03/29/23	Benzene -	<0.050	80.0	<10.0	39.7	<10.0
				Total BTEX -	<0.300				
N-SW1.3	0-5'	Comp	12/01/23	Benzene -	<0.050	32.0	<10.0	<10.0	<10.0
				Total BTEX -	<0.300				
E-SW1.2	0-5'	Comp	04/11/23	Benzene -	<0.050	<16.0	<10.0	<10.0	<10.0
				Total BTEX -	<0.300				
E-SW1.3	0-5'	Comp	12/01/23	Benzene -	<0.050	<16.0	<10.0	<10.0	<10.0
				Total BTEX -	<0.300				
S-SW 1.2	0-5'	Comp	04/11/23	Benzene -	<0.050	<16.0	<10.0	<10.0	<10.0
				Total BTEX -	<0.300				
S-SW 1.3	0-5'	Comp	12/01/23	Benzene -	<0.050	<16.0	<10.0	<10.0	<10.0
				Total BTEX -	<0.300				
W-SW	0-5'	Comp	03/29/23	Benzene -	<0.050	16.0	<10.0	15.8	<10.0
				Total BTEX -	<0.300				
W-SW1.3	0-5'	Comp	12/01/23	Benzene -	<0.050	16.0	<10.0	<10.0	<10.0
				Total BTEX -	<0.300				
FS01	5'	Comp	03/29/23	Benzene -	<0.050	32.0	<10.0	<10.0	<10.0
				Total BTEX -	<0.300				
FS01.3	5'	Comp	03/29/23	Benzene -	<0.050	<16.0	<10.0	<10.0	<10.0
				Total BTEX -	<0.300				
NMOCD Reclamation Standards <sup>4</sup> (Applicable for Soils from the Surface to 4 ft. Below Grade Surface)				Benzene -	10	600	100		
				Total BTEX -	50				
NMOCD Remediation and Delineation Standards <sup>5</sup> (Applicable for Soils at Depths Greater than 4 ft. Below Grade Surface)				Benzene -	10	600	100		
				Total BTEX -	50				

1. BTEX = Benzene, toluene, ethylbenzene, total xylenes analyzed by EPA Method 8021B

2. Chloride = Chloride analyzed by EPA Method 300.

3. TPH = Total petroleum hydrocarbons analyzed by EPA Method 8015M (GRO/DRO/MRO)

4. New Mexico Administration Code (NMAC) Restoration, Reclamation, and Re-vegetation (19.15.29.13) New Mexico Administration Code (NMAC) – D (Reclamation of areas no longer in use) for soils extending to 4 ft. bgs

5. New Mexico Oil Conservation Division (NMOCD) Remediation and Delineation Standards are proposed in 19.15.29.12 NMAC - N, 8/14/2018

&lt; = Constituent not detected above the indicated laboratory SDL

NA = Not Analyzed

N/A = Not Applicable



# New Mexico Office of the State Engineer

## Point of Diversion Summary

(quarters are 1=NW 2=NE 3=SW 4=SE)  
 (quarters are smallest to largest) (NAD83 UTM in meters)

Well Tag	POD Number	Q64	Q16	Q4	Sec	Tws	Rng	X	Y
RA 11914	POD1	2	4	2	20	17S	30E	594801	3632002

**Driller License:** 1682 **Driller Company:** HUNGRY HORSE, LLC.

**Driller Name:** JOHN NORRIS

**Drill Start Date:** 03/19/2013

**Drill Finish Date:** 03/19/2013

**Plug Date:**

**Log File Date:** 04/09/2013

**PCW Rcv Date:**

**Source:** Shallow

**Pump Type:**

**Pipe Discharge Size:**

**Estimated Yield:**

**Casing Size:**

**Depth Well:** 85 feet

**Depth Water:** 80 feet

Water Bearing Stratifications:	Top	Bottom	Description
	11	85	Sandstone/Gravel/Conglomerate

The data is furnished by the NMOSE/ISC and is accepted by the recipient with the expressed understanding that the OSE/ISC make no warranties, expressed or implied, concerning the accuracy, completeness, reliability, usability, or suitability for any particular purpose of the data.

3/31/23 7:27 AM

Page 1 of 1

POD SUMMARY - RA 11914 POD1

## **APPENDIX C – PHOTOGRAPHIC LOG**



Cedar Breaks LH ■ Eddy County, New Mexico  
April 5, 2023 ■ Terracon Project No. KH227027



**PHOTO 1:** View of area before excavation



**PHOTO 2:** View of area after excavation

Responsive ■ Resourceful ■ Reliable



Cedar Breaks LH ■ Eddy County, New Mexico  
April 5, 2023 ■ Terracon Project No. KH227027



03/29/2023 10:40 AM  
32.77208, -103.94892  
Unnamed Road, Artesia, NMA

**PHOTO 3:** View of area after excavation

Responsive ■ Resourceful ■ Reliable



## **APPENDIX D – ANALYTICAL REPORT AND CHAIN OF CUSTODY**



PHONE (575) 393-2326 ° 101 E. MARLAND ° HOBBS, NM 88240

April 04, 2023

JOSEPH GUESNIER

TERRACON CONSULTANTS

5827 50TH ST. SUITE 1

LUBBOCK, TX 79424

RE: CEDAR BREAKS LH

Enclosed are the results of analyses for samples received by the laboratory on 03/30/23 9:55.

Cardinal Laboratories is accredited through Texas NELAP under certificate number T104704398-22-15. Accreditation applies to drinking water, non-potable water and solid and chemical materials. All accredited analytes are denoted by an asterisk (\*). For a complete list of accredited analytes and matrices visit the TCEQ website at [www.tceq.texas.gov/field/qa/lab\\_accred\\_certif.html](http://www.tceq.texas.gov/field/qa/lab_accred_certif.html).

Cardinal Laboratories is accredited through the State of Colorado Department of Public Health and Environment for:

Method EPA 552.2	Haloacetic Acids (HAA-5)
Method EPA 524.2	Total Trihalomethanes (TTHM)
Method EPA 524.4	Regulated VOCs (V1, V2, V3)

Accreditation applies to public drinking water matrices.

This report meets NELAP requirements and is made up of a cover page, analytical results, and a copy of the original chain-of-custody. If you have any questions concerning this report, please feel free to contact me.

Sincerely,

A handwritten signature in black ink that reads "Celey D. Keene". The signature is written in a cursive style with a large, stylized 'C' and 'K'.

Celey D. Keene

Lab Director/Quality Manager



PHONE (575) 393-2326 ° 101 E. MARLAND ° HOBBS, NM 88240

**Analytical Results For:**

TERRACON CONSULTANTS  
 JOSEPH GUESNIER  
 5827 50TH ST. SUITE 1  
 LUBBOCK TX, 79424  
 Fax To:

Received: 03/30/2023  
 Reported: 04/04/2023  
 Project Name: CEDAR BREAKS LH  
 Project Number: KH237028  
 Project Location: NONE GIVEN

Sampling Date: 03/29/2023  
 Sampling Type: Soil  
 Sampling Condition: Cool & Intact  
 Sample Received By: Tamara Oldaker

**Sample ID: N - SW (H231459-01)**

BTX 8021B		mg/kg		Analyzed By: JH/					
Analyte	Result	Reporting Limit	Analyzed	Method Blank	BS	% Recovery	True Value QC	RPD	Qualifier
Benzene*	<0.050	0.050	03/31/2023	ND	2.14	107	2.00	6.99	
Toluene*	<0.050	0.050	03/31/2023	ND	2.19	109	2.00	7.52	
Ethylbenzene*	<0.050	0.050	03/31/2023	ND	2.14	107	2.00	5.61	
Total Xylenes*	<0.150	0.150	03/31/2023	ND	6.63	110	6.00	3.86	
Total BTX	<0.300	0.300	03/31/2023	ND					

Surrogate: 4-Bromofluorobenzene (PID) 105 % 71.5-134

Chloride, SM4500Cl-B		mg/kg		Analyzed By: AC					
Analyte	Result	Reporting Limit	Analyzed	Method Blank	BS	% Recovery	True Value QC	RPD	Qualifier
Chloride	80.0	16.0	04/03/2023	ND	416	104	400	3.77	

TPH 8015M		mg/kg		Analyzed By: MS					
Analyte	Result	Reporting Limit	Analyzed	Method Blank	BS	% Recovery	True Value QC	RPD	Qualifier
GRO C6-C10*	<10.0	10.0	03/31/2023	ND	171	85.6	200	6.24	
DRO >C10-C28*	39.7	10.0	03/31/2023	ND	171	85.3	200	7.39	
EXT DRO >C28-C36	<10.0	10.0	03/31/2023	ND					

Surrogate: 1-Chlorooctane 94.0 % 48.2-134

Surrogate: 1-Chlorooctadecane 102 % 49.1-148

Cardinal Laboratories

\*=Accredited Analyte

PLEASE NOTE: Liability and Damages. Cardinal's liability and client's exclusive remedy for any claim arising, whether based in contract or tort, shall be limited to the amount paid by client for analyses. All claims, including those for negligence and any other cause whatsoever shall be deemed waived unless made in writing and received by Cardinal within thirty (30) days after completion of the applicable service. In no event shall Cardinal be liable for incidental or consequential damages, including, without limitation, business interruptions, loss of use, or loss of profits incurred by client, its subsidiaries, affiliates or successors arising out of or related to the performance of the services hereunder by Cardinal, regardless of whether such claim is based upon any of the above stated reasons or otherwise. Results relate only to the samples identified above. This report shall not be reproduced except in full with written approval of Cardinal Laboratories.

Celey D. Keene, Lab Director/Quality Manager



PHONE (575) 393-2326 ° 101 E. MARLAND ° HOBBS, NM 88240

**Analytical Results For:**

TERRACON CONSULTANTS  
 JOSEPH GUESNIER  
 5827 50TH ST. SUITE 1  
 LUBBOCK TX, 79424  
 Fax To:

Received: 03/30/2023  
 Reported: 04/04/2023  
 Project Name: CEDAR BREAKS LH  
 Project Number: KH237028  
 Project Location: NONE GIVEN

Sampling Date: 03/29/2023  
 Sampling Type: Soil  
 Sampling Condition: Cool & Intact  
 Sample Received By: Tamara Oldaker

**Sample ID: E - SW (H231459-02)**

BTEx 8021B		mg/kg		Analyzed By: JH/					
Analyte	Result	Reporting Limit	Analyzed	Method Blank	BS	% Recovery	True Value QC	RPD	Qualifier
Benzene*	<0.050	0.050	03/31/2023	ND	2.09	105	2.00	5.97	
Toluene*	<0.050	0.050	03/31/2023	ND	2.16	108	2.00	5.56	
Ethylbenzene*	<0.050	0.050	03/31/2023	ND	2.11	105	2.00	5.59	
Total Xylenes*	<0.150	0.150	03/31/2023	ND	6.55	109	6.00	5.59	
Total BTEx	<0.300	0.300	03/31/2023	ND					

Surrogate: 4-Bromofluorobenzene (PID) 106 % 71.5-134

Chloride, SM4500Cl-B		mg/kg		Analyzed By: AC					
Analyte	Result	Reporting Limit	Analyzed	Method Blank	BS	% Recovery	True Value QC	RPD	Qualifier
Chloride	32.0	16.0	04/03/2023	ND	416	104	400	3.77	

TPH 8015M		mg/kg		Analyzed By: MS					
Analyte	Result	Reporting Limit	Analyzed	Method Blank	BS	% Recovery	True Value QC	RPD	Qualifier
GRO C6-C10*	<10.0	10.0	03/31/2023	ND	171	85.6	200	6.24	
DRO >C10-C28*	101	10.0	03/31/2023	ND	171	85.3	200	7.39	
EXT DRO >C28-C36	17.8	10.0	03/31/2023	ND					

Surrogate: 1-Chlorooctane 105 % 48.2-134

Surrogate: 1-Chlorooctadecane 116 % 49.1-148

Cardinal Laboratories

\*=Accredited Analyte

PLEASE NOTE: Liability and Damages. Cardinal's liability and client's exclusive remedy for any claim arising, whether based in contract or tort, shall be limited to the amount paid by client for analyses. All claims, including those for negligence and any other cause whatsoever shall be deemed waived unless made in writing and received by Cardinal within thirty (30) days after completion of the applicable service. In no event shall Cardinal be liable for incidental or consequential damages, including, without limitation, business interruptions, loss of use, or loss of profits incurred by client, its subsidiaries, affiliates or successors arising out of or related to the performance of the services hereunder by Cardinal, regardless of whether such claim is based upon any of the above stated reasons or otherwise. Results relate only to the samples identified above. This report shall not be reproduced except in full with written approval of Cardinal Laboratories.

Celey D. Keene, Lab Director/Quality Manager



PHONE (575) 393-2326 ° 101 E. MARLAND ° HOBBS, NM 88240

**Analytical Results For:**

TERRACON CONSULTANTS  
 JOSEPH GUESNIER  
 5827 50TH ST. SUITE 1  
 LUBBOCK TX, 79424  
 Fax To:

Received: 03/30/2023  
 Reported: 04/04/2023  
 Project Name: CEDAR BREAKS LH  
 Project Number: KH237028  
 Project Location: NONE GIVEN

Sampling Date: 03/29/2023  
 Sampling Type: Soil  
 Sampling Condition: Cool & Intact  
 Sample Received By: Tamara Oldaker

**Sample ID: S - SW (H231459-03)**

BTEx 8021B		mg/kg		Analyzed By: JH/					
Analyte	Result	Reporting Limit	Analyzed	Method Blank	BS	% Recovery	True Value QC	RPD	Qualifier
Benzene*	<0.050	0.050	03/31/2023	ND	2.09	105	2.00	5.97	
Toluene*	<0.050	0.050	03/31/2023	ND	2.16	108	2.00	5.56	
Ethylbenzene*	<0.050	0.050	03/31/2023	ND	2.11	105	2.00	5.59	
Total Xylenes*	<0.150	0.150	03/31/2023	ND	6.55	109	6.00	5.59	
Total BTEx	<0.300	0.300	03/31/2023	ND					

Surrogate: 4-Bromofluorobenzene (PID) 108 % 71.5-134

Chloride, SM4500CI-B		mg/kg		Analyzed By: AC					
Analyte	Result	Reporting Limit	Analyzed	Method Blank	BS	% Recovery	True Value QC	RPD	Qualifier
Chloride	48.0	16.0	04/03/2023	ND	416	104	400	3.77	

TPH 8015M		mg/kg		Analyzed By: MS					
Analyte	Result	Reporting Limit	Analyzed	Method Blank	BS	% Recovery	True Value QC	RPD	Qualifier
GRO C6-C10*	<10.0	10.0	03/30/2023	ND	210	105	200	2.20	
DRO >C10-C28*	98.1	10.0	03/30/2023	ND	235	117	200	7.72	
EXT DRO >C28-C36	<10.0	10.0	03/30/2023	ND					

Surrogate: 1-Chlorooctane 97.4 % 48.2-134

Surrogate: 1-Chlorooctadecane 118 % 49.1-148

Cardinal Laboratories

\*=Accredited Analyte

PLEASE NOTE: Liability and Damages. Cardinal's liability and client's exclusive remedy for any claim arising, whether based in contract or tort, shall be limited to the amount paid by client for analyses. All claims, including those for negligence and any other cause whatsoever shall be deemed waived unless made in writing and received by Cardinal within thirty (30) days after completion of the applicable service. In no event shall Cardinal be liable for incidental or consequential damages, including, without limitation, business interruptions, loss of use, or loss of profits incurred by client, its subsidiaries, affiliates or successors arising out of or related to the performance of the services hereunder by Cardinal, regardless of whether such claim is based upon any of the above stated reasons or otherwise. Results relate only to the samples identified above. This report shall not be reproduced except in full with written approval of Cardinal Laboratories.

Celey D. Keene, Lab Director/Quality Manager



PHONE (575) 393-2326 ° 101 E. MARLAND ° HOBBS, NM 88240

**Analytical Results For:**

TERRACON CONSULTANTS  
 JOSEPH GUESNIER  
 5827 50TH ST. SUITE 1  
 LUBBOCK TX, 79424  
 Fax To:

Received: 03/30/2023  
 Reported: 04/04/2023  
 Project Name: CEDAR BREAKS LH  
 Project Number: KH237028  
 Project Location: NONE GIVEN

Sampling Date: 03/29/2023  
 Sampling Type: Soil  
 Sampling Condition: Cool & Intact  
 Sample Received By: Tamara Oldaker

**Sample ID: W - SW (H231459-04)**

BTEx 8021B		mg/kg		Analyzed By: JH/					
Analyte	Result	Reporting Limit	Analyzed	Method Blank	BS	% Recovery	True Value QC	RPD	Qualifier
Benzene*	<0.050	0.050	03/31/2023	ND	2.09	105	2.00	5.97	
Toluene*	<0.050	0.050	03/31/2023	ND	2.16	108	2.00	5.56	
Ethylbenzene*	<0.050	0.050	03/31/2023	ND	2.11	105	2.00	5.59	
Total Xylenes*	<0.150	0.150	03/31/2023	ND	6.55	109	6.00	5.59	
Total BTEX	<0.300	0.300	03/31/2023	ND					

Surrogate: 4-Bromofluorobenzene (PID) 108 % 71.5-134

Chloride, SM4500Cl-B		mg/kg		Analyzed By: AC					
Analyte	Result	Reporting Limit	Analyzed	Method Blank	BS	% Recovery	True Value QC	RPD	Qualifier
Chloride	16.0	16.0	04/03/2023	ND	416	104	400	3.77	

TPH 8015M		mg/kg		Analyzed By: MS					
Analyte	Result	Reporting Limit	Analyzed	Method Blank	BS	% Recovery	True Value QC	RPD	Qualifier
GRO C6-C10*	<10.0	10.0	03/30/2023	ND	210	105	200	2.20	
DRO >C10-C28*	15.8	10.0	03/30/2023	ND	235	117	200	7.72	
EXT DRO >C28-C36	<10.0	10.0	03/30/2023	ND					

Surrogate: 1-Chlorooctane 94.6 % 48.2-134

Surrogate: 1-Chlorooctadecane 113 % 49.1-148

Cardinal Laboratories

\*=Accredited Analyte

PLEASE NOTE: Liability and Damages. Cardinal's liability and client's exclusive remedy for any claim arising, whether based in contract or tort, shall be limited to the amount paid by client for analyses. All claims, including those for negligence and any other cause whatsoever shall be deemed waived unless made in writing and received by Cardinal within thirty (30) days after completion of the applicable service. In no event shall Cardinal be liable for incidental or consequential damages, including, without limitation, business interruptions, loss of use, or loss of profits incurred by client, its subsidiaries, affiliates or successors arising out of or related to the performance of the services hereunder by Cardinal, regardless of whether such claim is based upon any of the above stated reasons or otherwise. Results relate only to the samples identified above. This report shall not be reproduced except in full with written approval of Cardinal Laboratories.

Celey D. Keene, Lab Director/Quality Manager



PHONE (575) 393-2326 ° 101 E. MARLAND ° HOBBS, NM 88240

**Analytical Results For:**

TERRACON CONSULTANTS  
 JOSEPH GUESNIER  
 5827 50TH ST. SUITE 1  
 LUBBOCK TX, 79424  
 Fax To:

Received: 03/30/2023  
 Reported: 04/04/2023  
 Project Name: CEDAR BREAKS LH  
 Project Number: KH237028  
 Project Location: NONE GIVEN

Sampling Date: 03/29/2023  
 Sampling Type: Soil  
 Sampling Condition: Cool & Intact  
 Sample Received By: Tamara Oldaker

**Sample ID: FS 01 (H231459-05)**

BTEX 8021B		mg/kg		Analyzed By: JH/					
Analyte	Result	Reporting Limit	Analyzed	Method Blank	BS	% Recovery	True Value QC	RPD	Qualifier
Benzene*	<0.050	0.050	03/31/2023	ND	2.09	105	2.00	5.97	
Toluene*	<0.050	0.050	03/31/2023	ND	2.16	108	2.00	5.56	
Ethylbenzene*	<0.050	0.050	03/31/2023	ND	2.11	105	2.00	5.59	
Total Xylenes*	<0.150	0.150	03/31/2023	ND	6.55	109	6.00	5.59	
Total BTEX	<0.300	0.300	03/31/2023	ND					

Surrogate: 4-Bromofluorobenzene (PID) 106 % 71.5-134

Chloride, SM4500Cl-B		mg/kg		Analyzed By: AC					
Analyte	Result	Reporting Limit	Analyzed	Method Blank	BS	% Recovery	True Value QC	RPD	Qualifier
Chloride	32.0	16.0	04/03/2023	ND	416	104	400	3.77	

TPH 8015M		mg/kg		Analyzed By: MS					
Analyte	Result	Reporting Limit	Analyzed	Method Blank	BS	% Recovery	True Value QC	RPD	Qualifier
GRO C6-C10*	<10.0	10.0	03/30/2023	ND	210	105	200	2.20	
DRO >C10-C28*	<10.0	10.0	03/30/2023	ND	235	117	200	7.72	
EXT DRO >C28-C36	<10.0	10.0	03/30/2023	ND					

Surrogate: 1-Chlorooctane 90.9 % 48.2-134

Surrogate: 1-Chlorooctadecane 104 % 49.1-148

Cardinal Laboratories

\*=Accredited Analyte

PLEASE NOTE: Liability and Damages. Cardinal's liability and client's exclusive remedy for any claim arising, whether based in contract or tort, shall be limited to the amount paid by client for analyses. All claims, including those for negligence and any other cause whatsoever shall be deemed waived unless made in writing and received by Cardinal within thirty (30) days after completion of the applicable service. In no event shall Cardinal be liable for incidental or consequential damages, including, without limitation, business interruptions, loss of use, or loss of profits incurred by client, its subsidiaries, affiliates or successors arising out of or related to the performance of the services hereunder by Cardinal, regardless of whether such claim is based upon any of the above stated reasons or otherwise. Results relate only to the samples identified above. This report shall not be reproduced except in full with written approval of Cardinal Laboratories.

Celey D. Keene, Lab Director/Quality Manager



PHONE (575) 393-2326 ° 101 E. MARLAND ° HOBBS, NM 88240

### Notes and Definitions

- QR-03      The RPD value for the sample duplicate or MS/MSD was outside of QC acceptance limits due to matrix interference. QC batch accepted based on LCS and/or LCSD recovery and/or RPD values.
- ND      Analyte NOT DETECTED at or above the reporting limit
- RPD      Relative Percent Difference
- \*\*      Samples not received at proper temperature of 6°C or below.
- \*\*\*      Insufficient time to reach temperature.
- Chloride by SM4500Cl-B does not require samples be received at or below 6°C  
Samples reported on an as received basis (wet) unless otherwise noted on report

Cardinal Laboratories

\*=Accredited Analyte

PLEASE NOTE: Liability and Damages. Cardinal's liability and client's exclusive remedy for any claim arising, whether based in contract or tort, shall be limited to the amount paid by client for analyses. All claims, including those for negligence and any other cause whatsoever shall be deemed waived unless made in writing and received by Cardinal within thirty (30) days after completion of the applicable service. In no event shall Cardinal be liable for incidental or consequential damages, including, without limitation, business interruptions, loss of use, or loss of profits incurred by client, its subsidiaries, affiliates or successors arising out of or related to the performance of the services hereunder by Cardinal, regardless of whether such claim is based upon any of the above stated reasons or otherwise. Results relate only to the samples identified above. This report shall not be reproduced except in full with written approval of Cardinal Laboratories.

A handwritten signature in black ink, appearing to read "Celey D. Keene".

Celey D. Keene, Lab Director/Quality Manager





101 East Marland, Hobbs, NM 88240  
(575) 393-2326 FAX (575) 393-2476

CHAIN-OF-CUSTODY AND ANALYSIS REQUEST

<b>Company Name:</b> Terracon		<b>BILL TO</b>		<b>ANALYSIS REQUEST</b>																					
<b>Project Manager:</b> Joseph Guesnier		<b>P.O. #:</b>																							
<b>Address:</b> 4518 W. Perice Street		<b>Company:</b> <i>Plumgo</i>																							
<b>City:</b> Carlsbad		<b>Attn:</b> <i>Chad Frost</i>																							
<b>Phone #:</b> 8065077057		<b>Address:</b>																							
<b>State:</b> NM <b>Zip:</b> 88220																									
<b>Fax #:</b>																									
<b>Project #:</b> <i>KH237028</i>		<b>City:</b>																							
<b>Project Owner:</b>		<b>State:</b>																							
<b>Project Name:</b> <i>Cedar Brooks LH</i>		<b>Zip:</b>																							
<b>Project Location:</b>		<b>Phone #:</b>																							
<b>Sampler Name:</b> Travis Casey		<b>Fax #:</b>																							
FOR LAB USE ONLY																									
<b>Lab I.D.</b>	<b>Sample I.D.</b>	(G)RAB OR (C)OMP.		<b>MATRIX</b>		<b>PRESERV</b>		<b>SAMPLING</b>																	
		# CONTAINERS		GROUNDWATER WASTEWATER		SOIL OIL SLUDGE OTHER :		ACID/BASE: ICE / COOL OTHER :		DATE		TIME													
<i>H231459</i>	<i>1 N-SW</i>	<i>C</i>									<i>3/29</i>	<i>0436</i>	<i>1</i>	<i>1</i>	<i>1</i>										
	<i>2 E-SW</i>											<i>0438</i>	<i>1</i>	<i>1</i>	<i>1</i>										
	<i>3 S-SW</i>											<i>0440</i>	<i>1</i>	<i>1</i>	<i>1</i>										
	<i>4 V-SW</i>											<i>0442</i>	<i>1</i>	<i>1</i>	<i>1</i>										
	<i>5 FS01</i>											<i>0444</i>	<i>1</i>	<i>1</i>	<i>1</i>										
PLEASE NOTE: Liability and Damages, Cardinal's liability and client's exclusive remedy for any claim arising whether based in contract or tort, shall be limited to the amount paid by the client for the analyses. All claims including those for negligence and any other cause whatsoever shall be deemed waived unless made in writing and received by Cardinal within 30 days after completion of the applicable service. In no event shall Cardinal be liable for incidental or consequential damages, including without limitation, business interruptions, loss of use, or loss of profits incurred by client, its subsidiaries, affiliates or successors arising out of or related to the performance of services hereunder by Cardinal, regardless of whether such claim is based upon any of the above stated reasons or otherwise.																									
<b>Relinquished By:</b>		<b>Date:</b> <i>3-30-23</i>		<b>Received By:</b>		<b>Verbal Result:</b> <input type="checkbox"/> Yes <input type="checkbox"/> No <input checked="" type="checkbox"/> Add'l Phone #:																			
<b>Relinquished By:</b> <i>[Signature]</i>		<b>Time:</b> <i>1955</i>		<b>Received By:</b> <i>[Signature]</i>		<b>All Results are emailed. Please provide Email address:</b>																			
<b>Date:</b>		<b>Time:</b>		<b>REMARKS:</b> <i>Joseph Guesnier@terracon.com; Travis Casey@terracon.com; Austin Worley@terracon.com; Michael Adams@terracon.com</i>																					
<b>Delivered By: (Circle One)</b>		<b>Observed Temp. °C</b> <i>13</i>		<b>Sample Condition:</b> <input checked="" type="checkbox"/> Cool <input type="checkbox"/> Intact <input type="checkbox"/> Yes <input type="checkbox"/> No		<b>CHECKED BY:</b> <i>[Signature]</i> (Initials)																			
<b>Sampler - UPS - Bus - Other:</b>		<b>Corrected Temp. °C</b> <i>0.7</i>		<b>Thermometer ID #113</b>		<b>Turnaround Time:</b> <input checked="" type="checkbox"/> Standard <input type="checkbox"/> Rush																			
				<b>Correction Factor -0.5°C</b>		<b>Bacteria (only) Sample Condition:</b> <input type="checkbox"/> Cool <input type="checkbox"/> Intact <input type="checkbox"/> Yes <input type="checkbox"/> No																			
						<b>Observed Temp. °C</b>																			
						<b>Corrected Temp. °C</b>																			

† Cardinal cannot accept verbal changes. Please email changes to celey.keene@cardinallabsnm.com



PHONE (575) 393-2326 ° 101 E. MARLAND ° HOBBS, NM 88240

April 18, 2023

JOSEPH GUESNIER

TERRACON CONSULTANTS

5827 50TH ST. SUITE 1

LUBBOCK, TX 79424

RE: CEDAR BREAKS LH

Enclosed are the results of analyses for samples received by the laboratory on 04/11/23 12:25.

Cardinal Laboratories is accredited through Texas NELAP under certificate number T104704398-22-15. Accreditation applies to drinking water, non-potable water and solid and chemical materials. All accredited analytes are denoted by an asterisk (\*). For a complete list of accredited analytes and matrices visit the TCEQ website at [www.tceq.texas.gov/field/qa/lab\\_accred\\_certif.html](http://www.tceq.texas.gov/field/qa/lab_accred_certif.html).

Cardinal Laboratories is accredited through the State of Colorado Department of Public Health and Environment for:

Method EPA 552.2	Haloacetic Acids (HAA-5)
Method EPA 524.2	Total Trihalomethanes (TTHM)
Method EPA 524.4	Regulated VOCs (V1, V2, V3)

Accreditation applies to public drinking water matrices.

This report meets NELAP requirements and is made up of a cover page, analytical results, and a copy of the original chain-of-custody. If you have any questions concerning this report, please feel free to contact me.

Sincerely,

A handwritten signature in black ink that reads "Celey D. Keene". The signature is written in a cursive, flowing style.

Celey D. Keene

Lab Director/Quality Manager



PHONE (575) 393-2326 ° 101 E. MARLAND ° HOBBS, NM 88240

**Analytical Results For:**

TERRACON CONSULTANTS  
 JOSEPH GUESNIER  
 5827 50TH ST. SUITE 1  
 LUBBOCK TX, 79424  
 Fax To:

Received: 04/11/2023  
 Reported: 04/18/2023  
 Project Name: CEDAR BREAKS LH  
 Project Number: KH237028  
 Project Location: DURANGO - EDDY

Sampling Date: 04/11/2023  
 Sampling Type: Soil  
 Sampling Condition: Cool & Intact  
 Sample Received By: Tamara Oldaker

**Sample ID: E - SW 1.2 (H231699-01)**

BTX 8021B		mg/kg		Analyzed By: JH						
Analyte	Result	Reporting Limit	Analyzed	Method Blank	BS	% Recovery	True Value QC	RPD	Qualifier	
Benzene*	<0.050	0.050	04/14/2023	ND	1.94	96.9	2.00	6.09		
Toluene*	<0.050	0.050	04/14/2023	ND	2.07	104	2.00	5.84		
Ethylbenzene*	<0.050	0.050	04/14/2023	ND	2.18	109	2.00	6.07		
Total Xylenes*	<0.150	0.150	04/14/2023	ND	6.73	112	6.00	6.47		
Total BTX	<0.300	0.300	04/14/2023	ND						

Surrogate: 4-Bromofluorobenzene (PID) 104 % 71.5-134

Chloride, SM4500Cl-B		mg/kg		Analyzed By: AC						
Analyte	Result	Reporting Limit	Analyzed	Method Blank	BS	% Recovery	True Value QC	RPD	Qualifier	
Chloride	<16.0	16.0	04/13/2023	ND	400	100	400	0.00		

TPH 8015M		mg/kg		Analyzed By: MS					
Analyte	Result	Reporting Limit	Analyzed	Method Blank	BS	% Recovery	True Value QC	RPD	Qualifier
GRO C6-C10*	<10.0	10.0	04/14/2023	ND	184	91.9	200	3.86	
DRO >C10-C28*	<10.0	10.0	04/14/2023	ND	176	88.2	200	4.02	
EXT DRO >C28-C36	<10.0	10.0	04/14/2023	ND					

Surrogate: 1-Chlorooctane 103 % 48.2-134

Surrogate: 1-Chlorooctadecane 110 % 49.1-148

Cardinal Laboratories

\*=Accredited Analyte

PLEASE NOTE: Liability and Damages. Cardinal's liability and client's exclusive remedy for any claim arising, whether based in contract or tort, shall be limited to the amount paid by client for analyses. All claims, including those for negligence and any other cause whatsoever shall be deemed waived unless made in writing and received by Cardinal within thirty (30) days after completion of the applicable service. In no event shall Cardinal be liable for incidental or consequential damages, including, without limitation, business interruptions, loss of use, or loss of profits incurred by client, its subsidiaries, affiliates or successors arising out of or related to the performance of the services hereunder by Cardinal, regardless of whether such claim is based upon any of the above stated reasons or otherwise. Results relate only to the samples identified above. This report shall not be reproduced except in full with written approval of Cardinal Laboratories.

Celey D. Keene, Lab Director/Quality Manager



PHONE (575) 393-2326 ° 101 E. MARLAND ° HOBBS, NM 88240

**Analytical Results For:**

TERRACON CONSULTANTS  
 JOSEPH GUESNIER  
 5827 50TH ST. SUITE 1  
 LUBBOCK TX, 79424  
 Fax To:

Received: 04/11/2023  
 Reported: 04/18/2023  
 Project Name: CEDAR BREAKS LH  
 Project Number: KH237028  
 Project Location: DURANGO - EDDY

Sampling Date: 04/11/2023  
 Sampling Type: Soil  
 Sampling Condition: Cool & Intact  
 Sample Received By: Tamara Oldaker

**Sample ID: S - SW 1.2 (H231699-02)**

BTEx 8021B		mg/kg		Analyzed By: JH						
Analyte	Result	Reporting Limit	Analyzed	Method Blank	BS	% Recovery	True Value QC	RPD	Qualifier	
Benzene*	<0.050	0.050	04/14/2023	ND	1.94	96.9	2.00	6.09		
Toluene*	<0.050	0.050	04/14/2023	ND	2.07	104	2.00	5.84		
Ethylbenzene*	<0.050	0.050	04/14/2023	ND	2.18	109	2.00	6.07		
Total Xylenes*	<0.150	0.150	04/14/2023	ND	6.73	112	6.00	6.47		
Total BTEX	<0.300	0.300	04/14/2023	ND						

Surrogate: 4-Bromofluorobenzene (PID) 106 % 71.5-134

Chloride, SM4500Cl-B		mg/kg		Analyzed By: AC						
Analyte	Result	Reporting Limit	Analyzed	Method Blank	BS	% Recovery	True Value QC	RPD	Qualifier	
Chloride	<16.0	16.0	04/13/2023	ND	416	104	400	3.92		

TPH 8015M		mg/kg		Analyzed By: MS					
Analyte	Result	Reporting Limit	Analyzed	Method Blank	BS	% Recovery	True Value QC	RPD	Qualifier
GRO C6-C10*	<10.0	10.0	04/14/2023	ND	184	91.9	200	3.86	
DRO >C10-C28*	<10.0	10.0	04/14/2023	ND	176	88.2	200	4.02	
EXT DRO >C28-C36	<10.0	10.0	04/14/2023	ND					

Surrogate: 1-Chlorooctane 99.1 % 48.2-134

Surrogate: 1-Chlorooctadecane 108 % 49.1-148

Cardinal Laboratories

\*=Accredited Analyte

PLEASE NOTE: Liability and Damages. Cardinal's liability and client's exclusive remedy for any claim arising, whether based in contract or tort, shall be limited to the amount paid by client for analyses. All claims, including those for negligence and any other cause whatsoever shall be deemed waived unless made in writing and received by Cardinal within thirty (30) days after completion of the applicable service. In no event shall Cardinal be liable for incidental or consequential damages, including, without limitation, business interruptions, loss of use, or loss of profits incurred by client, its subsidiaries, affiliates or successors arising out of or related to the performance of the services hereunder by Cardinal, regardless of whether such claim is based upon any of the above stated reasons or otherwise. Results relate only to the samples identified above. This report shall not be reproduced except in full with written approval of Cardinal Laboratories.

Celey D. Keene, Lab Director/Quality Manager



PHONE (575) 393-2326 • 101 E. MARLAND • HOBBS, NM 88240

### Notes and Definitions

S-04	The surrogate recovery for this sample is outside of established control limits due to a sample matrix effect.
QR-03	The RPD value for the sample duplicate or MS/MSD was outside of QC acceptance limits due to matrix interference. QC batch accepted based on LCS and/or LCSD recovery and/or RPD values.
QM-07	The spike recovery was outside acceptance limits for the MS and/or MSD. The batch was accepted based on acceptable LCS recovery.
ND	Analyte NOT DETECTED at or above the reporting limit
RPD	Relative Percent Difference
**	Samples not received at proper temperature of 6°C or below.
***	Insufficient time to reach temperature.
-	Chloride by SM4500Cl-B does not require samples be received at or below 6°C Samples reported on an as received basis (wet) unless otherwise noted on report

Cardinal Laboratories

\*=Accredited Analyte

PLEASE NOTE: Liability and Damages. Cardinal's liability and client's exclusive remedy for any claim arising, whether based in contract or tort, shall be limited to the amount paid by client for analyses. All claims, including those for negligence and any other cause whatsoever shall be deemed waived unless made in writing and received by Cardinal within thirty (30) days after completion of the applicable service. In no event shall Cardinal be liable for incidental or consequential damages, including, without limitation, business interruptions, loss of use, or loss of profits incurred by client, its subsidiaries, affiliates or successors arising out of or related to the performance of the services hereunder by Cardinal, regardless of whether such claim is based upon any of the above stated reasons or otherwise. Results relate only to the samples identified above. This report shall not be reproduced except in full with written approval of Cardinal Laboratories.

A handwritten signature in black ink, appearing to read "Celey D. Keene".

Celey D. Keene, Lab Director/Quality Manager





CHAIN-OF-CUSTODY AND ANALYSIS REQUEST

101 East Marland, Hobbs, NM 88240  
(575) 393-2326 FAX (575) 393-2476

Company Name: Terracon

Project Manager: Joseph Guesnier

Address: 4518 W. Perice Street

City: Carlsbad

Phone #: 8065077057

State: NM Zip: 88220

Company: Durango  
Attn: Chad

Project #: KH237078

Project Owner: Durango

Project Name: Celery Beats 24

City: Durango

Project Location: Eddy

State: NM Zip: 88220

Sample Name: Travis Casey

Phone #: 505-233-7078

Fax #:

BILL TO

ANALYSIS REQUEST

FOR LAB USE ONLY

Lab I.D.

Sample I.D.

1 E-SW 1.2  
2 S-SW 1.2

(G)RAB OR (C)OMP.

# CONTAINERS

GROUNDWATER

WASTEWATER

SOIL

OIL

SLUDGE

OTHER :

ACID/BASE:

ICE / COOL

OTHER :

DATE

TIME

Chloride (EPA Method 4500)

TPH Extended 8015

BTEX (EPA Method 8021B)

PLEASE NOTE: Liability and Damages. Cardinal's liability and client's exclusive remedy for any claim arising whether based in contract or tort, shall be limited to the amount paid by the client for the analyses. All claims including those for negligence and any other cause whatsoever shall be deemed waived unless made in writing and received by Cardinal within 30 days after completion of the applicable service. In no event shall Cardinal be liable for incidental or consequential damages, including without limitation, business interruptions, loss of use, or loss of profits incurred by client, its subsidiaries, affiliates or successors arising out of or related to the performance of services hereunder by Cardinal, regardless of whether such claim is based upon any of the above stated reasons or otherwise.

Relinquished By:

Date: 4-11-23

Received By:

Verbal Result: ☐ Yes ☐ No Add'l Phone #:

All Results are emailed. Please provide Email address:

Relinquished By:

Date: 4-11-23

Received By:

REMARKS:

joesph.guesnier@terracon.com; travis.casey@terracon.com;  
austin.worley@terracon.com; michael.adams@terracon.com

Delivered By: (Circle One)

Observed Temp. °C

Corrected Temp. °C

Sample Condition  
Cool ☒ Intact ☒  
Yes ☒ No ☐

CHECKED BY: (Initials)

Turnaround Time:

Standard

☒

Bacteria (only) Sample Condition  
Cool ☒ Intact ☒  
Yes ☒ No ☐

Observed Temp. °C

Corrected Temp. °C

Sampler - UPS - Bus - Other:

Observed Temp. °C

Corrected Temp. °C

Sample Condition  
Cool ☒ Intact ☒  
Yes ☒ No ☐

CHECKED BY: (Initials)

Turnaround Time:

Standard

☒

Bacteria (only) Sample Condition  
Cool ☒ Intact ☒  
Yes ☒ No ☐

Observed Temp. °C

Corrected Temp. °C

FORM-006 R 3.2 10/07/21

† Cardinal cannot accept verbal changes. Please email changes to celey.keene@cardinalabsnm.com

## **APPENDIX E – INITIAL C-141**

District I  
1625 N. French Dr., Hobbs, NM 88240  
District II  
811 S. First St., Artesia, NM 88210  
District III  
1000 Rio Brazos Road, Aztec, NM 87410  
District IV  
1220 S. St. Francis Dr., Santa Fe, NM 87505

State of New Mexico  
Energy Minerals and Natural  
Resources Department  
Oil Conservation Division  
1220 South St. Francis Dr.  
Santa Fe, NM 87505

Form C-141  
Revised August 24, 2018  
Submit to appropriate OCD District office

Incident ID	nAPP2306238104
District RP	
Facility ID	
Application ID	

## Release Notification

### Responsible Party

Responsible Party Frontier Field Services, LLC	OGRID 221115
Contact Name Amber Groves	Contact Telephone 575-703-7992
Contact email <a href="mailto:agroves@durangomidstream.com">agroves@durangomidstream.com</a>	Incident # (assigned by OCD)
Contact mailing address 47 Conoco Rd, Maljamar NM 88264	

### Location of Release Source

Latitude 32.772053 Longitude -103.948920  
(NAD 83 in decimal degrees to 5 decimal places)

Site Name Cedar Breaks LH St. 1 6" Steel Line	Site Type Pipeline
Date Release Discovered 3/2/2023	API# (if applicable)

Unit Letter	Section	Township	Range	County
M	2	18S	30E	Eddy

Surface Owner: ☒ State ☐ Federal ☐ Tribal ☐ Private (Name: \_\_\_\_\_)

### Nature and Volume of Release

Material(s) Released (Select all that apply and attach calculations or specific justification for the volumes provided below)

<input type="checkbox"/> Crude Oil	Volume Released (bbls)	Volume Recovered (bbls)
<input type="checkbox"/> Produced Water	Volume Released (bbls)	Volume Recovered (bbls)
	Is the concentration of dissolved chloride in the produced water >10,000 mg/l?	<input type="checkbox"/> Yes <input type="checkbox"/> No
<input checked="" type="checkbox"/> Condensate	Volume Released (bbls) 1.53	Volume Recovered (bbls) 0
<input checked="" type="checkbox"/> Natural Gas	Volume Released (Mcf) 111.55	Volume Recovered (Mcf)
<input type="checkbox"/> Other (describe)	Volume/Weight Released (provide units)	Volume/Weight Recovered (provide units)

Cause of Release

External & Internal corrosion. Underground pipeline with soil impact.



Incident ID	nAPP2306238104
District RP	
Facility ID	
Application ID	

Was this a major release as defined by 19.15.29.7(A) NMAC?  <input type="checkbox"/> Yes <input checked="" type="checkbox"/> No	If YES, for what reason(s) does the responsible party consider this a major release?

### Initial Response

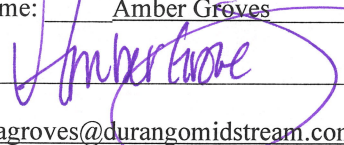
*The responsible party must undertake the following actions immediately unless they could create a safety hazard that would result in injury*

- ☒ The source of the release has been stopped.
- ☒ The impacted area has been secured to protect human health and the environment.
- ☒ Released materials have been contained via the use of berms or dikes, absorbent pads, or other containment devices.
- ☒ All free liquids and recoverable materials have been removed and managed appropriately.

If all the actions described above have not been undertaken, explain why:

Per 19.15.29.8 B. (4) NMAC the responsible party may commence remediation immediately after discovery of a release. If remediation has begun, please attach a narrative of actions to date. If remedial efforts have been successfully completed or if the release occurred within a lined containment area (see 19.15.29.11(A)(5)(a) NMAC), please attach all information needed for closure evaluation.

I hereby certify that the information given above is true and complete to the best of my knowledge and understand that pursuant to OCD rules and regulations all operators are required to report and/or file certain release notifications and perform corrective actions for releases which may endanger public health or the environment. The acceptance of a C-141 report by the OCD does not relieve the operator of liability should their operations have failed to adequately investigate and remediate contamination that pose a threat to groundwater, surface water, human health or the environment. In addition, OCD acceptance of a C-141 report does not relieve the operator of responsibility for compliance with any other federal, state, or local laws and/or regulations.

Printed Name: Amber Groves Title: Senior Environmental Specialist  
Signature:  Date: 3/3/2023  
email: agroves@durangomidstream.com Telephone: (575)703-7992

#### OCD Only

Received by: \_\_\_\_\_ Date: \_\_\_\_\_



## Gas Volume Release Report

Gas Release Volume Calculator		
Date:	3/2/2023	
Site or Line Name:	MAL-Cedar Breaks LH St1 6" Steel Line LP	
Area of Hole in Pipe:	0.25	square inches
Absolute Pressure:	70.2	psia - absolute pressure (psia = psig gauge pressure + 14.7)
Duration of Release:	60.00	minutes
Actual Temperature:	64.3	Degrees F
Representative Gas Analysis	Please attach or email a representative gas analysis	

Constants		
Temperature at standard conditions:	60	Deg. F
Pressure at standard conditions:	14.7	PSIA
Volume of Gas - ACF	23.55	MACF
Volume of Gas - SCF	111.55	MSCF

Notes
Entered by user
Calculated Value
Constant





## Liquid Volume Release Report

Liquid Release Volume Calculator							
Date:	3/2/2023						
Site or Line Name:	MAL-Cedar Breaks LH St1 6" Steel Line LP						
Soil Type	Porosity	Length	Width	Depth (.083 per inch)	Cubic Feet	Estimated Barrels	Soil Type
Clay	0.15				0	0.00	Clay
Sandy Clay	0.12				0	0.00	Sandy Clay
Silt	0.16				0	0.00	Silt
Fine Sand	0.16				0	0.00	Fine Sand
Medium Sand	0.25	10	5.4	0.415	22.41	1.00	Medium Sand
Coarse Sand	0.26				0	0.00	Coarse Sand
Gravelly Sand	0.26				0	0.00	Gravelly Sand
Fine Gravel	0.26				0	0.00	Fine Gravel
Medium Gravel	0.20				0	0.00	Medium Gravel
Coarse Gravel	0.18				0	0.00	Coarse Gravel
Sandstone	0.25				0	0.00	Sandstone
Siltstone	0.18				0	0.00	Siltstone
Limestone	0.13				0	0.00	Limestone
Basalt	0.19				0	0.00	Basalt
Standing Liquids	X	6	6	0.083	2.988	0.53	Standing Liquids

Choose the one prevailing ground type for estimating spill volumes at a single location. Standing liquids are figured separately using the green cell.

Note that the depth should be measured in feet and tenths of feet (1 inch = .083)

Cubic Feet = L x W x D

Estimated Barrels = ((Cubic Feet x Porosity) / 5.61)

Incident ID	nAPP2306238104
District RP	
Facility ID	
Application ID	

## Site Assessment/Characterization

*This information must be provided to the appropriate district office no later than 90 days after the release discovery date.*

What is the shallowest depth to groundwater beneath the area affected by the release?	_____ (ft bgs)
Did this release impact groundwater or surface water?	<input type="checkbox"/> Yes <input checked="" type="checkbox"/> No
Are the lateral extents of the release within 300 feet of a continuously flowing watercourse or any other significant watercourse?	<input type="checkbox"/> Yes <input checked="" type="checkbox"/> No
Are the lateral extents of the release within 200 feet of any lakebed, sinkhole, or playa lake (measured from the ordinary high-water mark)?	<input type="checkbox"/> Yes <input checked="" type="checkbox"/> No
Are the lateral extents of the release within 300 feet of an occupied permanent residence, school, hospital, institution, or church?	<input type="checkbox"/> Yes <input checked="" type="checkbox"/> No
Are the lateral extents of the release within 500 horizontal feet of a spring or a private domestic fresh water well used by less than five households for domestic or stock watering purposes?	<input type="checkbox"/> Yes <input checked="" type="checkbox"/> No
Are the lateral extents of the release within 1000 feet of any other fresh water well or spring?	<input type="checkbox"/> Yes <input checked="" type="checkbox"/> No
Are the lateral extents of the release within incorporated municipal boundaries or within a defined municipal fresh water well field?	<input type="checkbox"/> Yes <input checked="" type="checkbox"/> No
Are the lateral extents of the release within 300 feet of a wetland?	<input type="checkbox"/> Yes <input checked="" type="checkbox"/> No
Are the lateral extents of the release overlying a subsurface mine?	<input type="checkbox"/> Yes <input checked="" type="checkbox"/> No
Are the lateral extents of the release overlying an unstable area such as karst geology?	<input type="checkbox"/> Yes <input checked="" type="checkbox"/> No
Are the lateral extents of the release within a 100-year floodplain?	<input type="checkbox"/> Yes <input checked="" type="checkbox"/> No
Did the release impact areas <b>not</b> on an exploration, development, production, or storage site?	<input type="checkbox"/> Yes <input checked="" type="checkbox"/> No

Attach a comprehensive report (electronic submittals in .pdf format are preferred) demonstrating the lateral and vertical extents of soil contamination associated with the release have been determined. Refer to 19.15.29.11 NMAC for specifics.

### **Characterization Report Checklist:** *Each of the following items must be included in the report.*

- ☒ Scaled site map showing impacted area, surface features, subsurface features, delineation points, and monitoring wells.
- ☒ Field data
- ☒ Data table of soil contaminant concentration data
- ☒ Depth to water determination
- ☒ Determination of water sources and significant watercourses within ½-mile of the lateral extents of the release
- ☒ Boring or excavation logs
- ☒ Photographs including date and GIS information
- ☒ Topographic/Aerial maps
- ☒ Laboratory data including chain of custody

If the site characterization report does not include completed efforts at remediation of the release, the report must include a proposed remediation plan. That plan must include the estimated volume of material to be remediated, the proposed remediation technique, proposed sampling plan and methods, anticipated timelines for beginning and completing the remediation. The closure criteria for a release are contained in Table 1 of 19.15.29.12 NMAC, however, use of the table is modified by site- and release-specific parameters.

State of New Mexico  
Oil Conservation Division

Page 4

Incident ID	nAPP2306238104
District RP	
Facility ID	
Application ID	

I hereby certify that the information given above is true and complete to the best of my knowledge and understand that pursuant to OCD rules and regulations all operators are required to report and/or file certain release notifications and perform corrective actions for releases which may endanger public health or the environment. The acceptance of a C-141 report by the OCD does not relieve the operator of liability should their operations have failed to adequately investigate and remediate contamination that pose a threat to groundwater, surface water, human health or the environment. In addition, OCD acceptance of a C-141 report does not relieve the operator of responsibility for compliance with any other federal, state, or local laws and/or regulations.

Printed Name: Lupe Carrasco Title: Sr. Environmental SpecialistSignature: Lupe Carrasco Date: 6/16/23email: gcarrasco@durangomidstream.com Telephone: 575-725-0787**OCD Only**

Received by: \_\_\_\_\_ Date: \_\_\_\_\_

Incident ID	nAPP2306238104
District RP	
Facility ID	
Application ID	

## Remediation Plan

**Remediation Plan Checklist:** *Each of the following items must be included in the plan.*

- ☒ Detailed description of proposed remediation technique
- ☒ Scaled sitemap with GPS coordinates showing delineation points
- ☒ Estimated volume of material to be remediated
- ☒ Closure criteria is to Table 1 specifications subject to 19.15.29.12(C)(4) NMAC
- ☒ Proposed schedule for remediation (note if remediation plan timeline is more than 90 days OCD approval is required)

**Deferral Requests Only:** *Each of the following items must be confirmed as part of any request for deferral of remediation.*

- ☐ Contamination must be in areas immediately under or around production equipment where remediation could cause a major facility deconstruction.
- ☐ Extents of contamination must be fully delineated.
- ☐ Contamination does not cause an imminent risk to human health, the environment, or groundwater.

I hereby certify that the information given above is true and complete to the best of my knowledge and understand that pursuant to OCD rules and regulations all operators are required to report and/or file certain release notifications and perform corrective actions for releases which may endanger public health or the environment. The acceptance of a C-141 report by the OCD does not relieve the operator of liability should their operations have failed to adequately investigate and remediate contamination that pose a threat to groundwater, surface water, human health or the environment. In addition, OCD acceptance of a C-141 report does not relieve the operator of responsibility for compliance with any other federal, state, or local laws and/or regulations.

Printed Name: Lupe Carrasco Title: Sr. Environmental Specialist  
Signature: Lupe Carrasco Date: 6/16/23  
email: gcarrasco@durangomidstream.com Telephone: 575-725-0787

**OCD Only**

Received by: \_\_\_\_\_ Date: \_\_\_\_\_

☐ Approved ☐ Approved with Attached Conditions of Approval ☐ Denied ☐ Deferral Approved

Signature: \_\_\_\_\_ Date: \_\_\_\_\_



Incident ID	nAPP2306238104
District RP	
Facility ID	
Application ID	

## Closure

The responsible party must attach information demonstrating they have complied with all applicable closure requirements and any conditions or directives of the OCD. This demonstration should be in the form of a comprehensive report (electronic submittals in .pdf format are preferred) including a scaled site map, sampling diagrams, relevant field notes, photographs of any excavation prior to backfilling, laboratory data including chain of custody documents of final sampling, and a narrative of the remedial activities. Refer to 19.15.29.12 NMAC.

**Closure Report Attachment Checklist:** *Each of the following items must be included in the closure report.*

- ☒ A scaled site and sampling diagram as described in 19.15.29.11 NMAC
- ☒ Photographs of the remediated site prior to backfill or photos of the liner integrity if applicable (Note: appropriate OCD District office must be notified 2 days prior to liner inspection)
- ☒ Laboratory analyses of final sampling (Note: appropriate ODC District office must be notified 2 days prior to final sampling)
- ☒ Description of remediation activities

I hereby certify that the information given above is true and complete to the best of my knowledge and understand that pursuant to OCD rules and regulations all operators are required to report and/or file certain release notifications and perform corrective actions for releases which may endanger public health or the environment. The acceptance of a C-141 report by the OCD does not relieve the operator of liability should their operations have failed to adequately investigate and remediate contamination that pose a threat to groundwater, surface water, human health or the environment. In addition, OCD acceptance of a C-141 report does not relieve the operator of responsibility for compliance with any other federal, state, or local laws and/or regulations. The responsible party acknowledges they must substantially restore, reclaim, and re-vegetate the impacted surface area to the conditions that existed prior to the release or their final land use in accordance with 19.15.29.13 NMAC including notification to the OCD when reclamation and re-vegetation are complete.

Printed Name: Lupe Carrasco Title: Sr. Environmental Specialist  
Signature: Lupe Carrasco Date: 6/16/23  
email: gcarrasco@durangomidstream.com Telephone: 575-725-0787

**OCD Only**

Received by: \_\_\_\_\_ Date: \_\_\_\_\_

Closure approval by the OCD does not relieve the responsible party of liability should their operations have failed to adequately investigate and remediate contamination that poses a threat to groundwater, surface water, human health, or the environment nor does not relieve the responsible party of compliance with any other federal, state, or local laws and/or regulations.

Closure Approved by: \_\_\_\_\_ Date: \_\_\_\_\_

Printed Name: \_\_\_\_\_ Title: \_\_\_\_\_

## APPENDIX F – TERRACON STANDARD OF CARE, LIMITATION, AND RELIANCE

### Standard of Care

Terracon's services were performed in a manner consistent with generally accepted practices of the profession undertaken in similar studies in the same geographical area during the same time. Terracon makes no warranties, either express or implied, regarding the findings, conclusions, or recommendations. Please note that Terracon does not warrant the work of laboratories, regulatory agencies, or other third parties supplying information used in the preparation of the report. These services were performed in accordance with the scope of work agreed with you, Durango Midstream LLC, as reflected in our proposal (PKH227021).

### Additional Scope Limitations

The development of this Amended RAP is based upon information provided by the Client and Terracon's remediation and construction services line. Such information is subject to change over time. Certain indicators of the presence of hazardous substances, petroleum products, or other constituents may have been latent, inaccessible, unobservable, nondetectable, or not present during these services. We cannot represent that the site contains no hazardous substances, toxic materials, petroleum products, or other latent conditions beyond those by information provided by the Client. The data, interpretations, findings, and recommendations are based solely upon reformation executed within the scope of these services.

### Reliance

This report has been prepared for the exclusive use of Durango Midstream LLC, and any authorization for use or reliance by any other party (except a governmental entity having jurisdiction over the site) is prohibited without the express written authorization of Durango Midstream LLC and Terracon. Any unauthorized distribution or reuse is at Durango Midstream LLC sole risk. Notwithstanding the foregoing, reliance by authorized parties will be subject to the terms, conditions, and limitations stated in the proposal and Durango Midstream LLC and Terracon's Master Services Agreement. The limitation of liability defined in the terms and conditions is the aggregate limit of Terracon's liability to Durango Midstream LLC and all relying parties unless otherwise agreed in writing.





PHONE (575) 393-2326 ° 101 E. MARLAND ° HOBBS, NM 88240

December 06, 2023

JOSEPH GUESNIER

TERRACON CONSULTANTS

5827 50TH ST. SUITE 1

LUBBOCK, TX 79424

RE: CEDAR BREAKS LH

Enclosed are the results of analyses for samples received by the laboratory on 12/01/23 13:25.

Cardinal Laboratories is accredited through Texas NELAP under certificate number T104704398-22-15. Accreditation applies to drinking water, non-potable water and solid and chemical materials. All accredited analytes are denoted by an asterisk (\*). For a complete list of accredited analytes and matrices visit the TCEQ website at [www.tceq.texas.gov/field/qa/lab\\_accred\\_certif.html](http://www.tceq.texas.gov/field/qa/lab_accred_certif.html).

Cardinal Laboratories is accredited through the State of Colorado Department of Public Health and Environment for:

Method EPA 552.2	Haloacetic Acids (HAA-5)
Method EPA 524.2	Total Trihalomethanes (TTHM)
Method EPA 524.4	Regulated VOCs (V1, V2, V3)

Accreditation applies to public drinking water matrices.

This report meets NELAP requirements and is made up of a cover page, analytical results, and a copy of the original chain-of-custody. If you have any questions concerning this report, please feel free to contact me.

Sincerely,

A handwritten signature in black ink that reads "Celey D. Keene". The signature is written in a cursive style with a large, stylized 'C' and 'K'.

Celey D. Keene

Lab Director/Quality Manager



PHONE (575) 393-2326 ° 101 E. MARLAND ° HOBBS, NM 88240

**Analytical Results For:**

TERRACON CONSULTANTS  
 JOSEPH GUESNIER  
 5827 50TH ST. SUITE 1  
 LUBBOCK TX, 79424  
 Fax To:

Received: 12/01/2023  
 Reported: 12/06/2023  
 Project Name: CEDAR BREAKS LH  
 Project Number: KH237028  
 Project Location: DURANGO - EDDY

Sampling Date: 12/01/2023  
 Sampling Type: Soil  
 Sampling Condition: Cool & Intact  
 Sample Received By: Tamara Oldaker

**Sample ID: N SW 01.3 (H236467-01)**

BTX 8021B		mg/kg		Analyzed By: JH/					
Analyte	Result	Reporting Limit	Analyzed	Method Blank	BS	% Recovery	True Value QC	RPD	Qualifier
Benzene*	<0.050	0.050	12/04/2023	ND	2.02	101	2.00	1.52	
Toluene*	<0.050	0.050	12/04/2023	ND	2.00	100	2.00	0.386	
Ethylbenzene*	<0.050	0.050	12/04/2023	ND	2.00	99.9	2.00	0.250	
Total Xylenes*	<0.150	0.150	12/04/2023	ND	5.90	98.3	6.00	0.317	
Total BTX	<0.300	0.300	12/04/2023	ND					

Surrogate: 4-Bromofluorobenzene (PID) 113 % 71.5-134

Chloride, SM4500Cl-B		mg/kg		Analyzed By: AC						
Analyte	Result	Reporting Limit	Analyzed	Method Blank	BS	% Recovery	True Value QC	RPD	Qualifier	
Chloride	32.0	16.0	12/04/2023	ND	416	104	400	3.92		

TPH 8015M		mg/kg		Analyzed By: MS					
Analyte	Result	Reporting Limit	Analyzed	Method Blank	BS	% Recovery	True Value QC	RPD	Qualifier
GRO C6-C10*	<10.0	10.0	12/04/2023	ND	215	108	200	2.48	
DRO >C10-C28*	<10.0	10.0	12/04/2023	ND	213	107	200	3.16	
EXT DRO >C28-C36	<10.0	10.0	12/04/2023	ND					

Surrogate: 1-Chlorooctane 86.3 % 48.2-134

Surrogate: 1-Chlorooctadecane 98.3 % 49.1-148

Cardinal Laboratories

\*=Accredited Analyte

PLEASE NOTE: Liability and Damages. Cardinal's liability and client's exclusive remedy for any claim arising, whether based in contract or tort, shall be limited to the amount paid by client for analyses. All claims, including those for negligence and any other cause whatsoever shall be deemed waived unless made in writing and received by Cardinal within thirty (30) days after completion of the applicable service. In no event shall Cardinal be liable for incidental or consequential damages, including, without limitation, business interruptions, loss of use, or loss of profits incurred by client, its subsidiaries, affiliates or successors arising out of or related to the performance of the services hereunder by Cardinal, regardless of whether such claim is based upon any of the above stated reasons or otherwise. Results relate only to the samples identified above. This report shall not be reproduced except in full with written approval of Cardinal Laboratories.

Celey D. Keene, Lab Director/Quality Manager



PHONE (575) 393-2326 ° 101 E. MARLAND ° HOBBS, NM 88240

**Analytical Results For:**

TERRACON CONSULTANTS  
 JOSEPH GUESNIER  
 5827 50TH ST. SUITE 1  
 LUBBOCK TX, 79424  
 Fax To:

Received: 12/01/2023  
 Reported: 12/06/2023  
 Project Name: CEDAR BREAKS LH  
 Project Number: KH237028  
 Project Location: DURANGO - EDDY

Sampling Date: 12/01/2023  
 Sampling Type: Soil  
 Sampling Condition: Cool & Intact  
 Sample Received By: Tamara Oldaker

**Sample ID: S SW 01.3 (H236467-02)**

BTEx 8021B		mg/kg		Analyzed By: JH/					
Analyte	Result	Reporting Limit	Analyzed	Method Blank	BS	% Recovery	True Value QC	RPD	Qualifier
Benzene*	<0.050	0.050	12/04/2023	ND	2.02	101	2.00	1.52	
Toluene*	<0.050	0.050	12/04/2023	ND	2.00	100	2.00	0.386	
Ethylbenzene*	<0.050	0.050	12/04/2023	ND	2.00	99.9	2.00	0.250	
Total Xylenes*	<0.150	0.150	12/04/2023	ND	5.90	98.3	6.00	0.317	
Total BTEX	<0.300	0.300	12/04/2023	ND					

Surrogate: 4-Bromofluorobenzene (PID) 116 % 71.5-134

Chloride, SM4500Cl-B		mg/kg		Analyzed By: AC					
Analyte	Result	Reporting Limit	Analyzed	Method Blank	BS	% Recovery	True Value QC	RPD	Qualifier
Chloride	16.0	16.0	12/04/2023	ND	416	104	400	3.92	

TPH 8015M		mg/kg		Analyzed By: MS					
Analyte	Result	Reporting Limit	Analyzed	Method Blank	BS	% Recovery	True Value QC	RPD	Qualifier
GRO C6-C10*	<10.0	10.0	12/04/2023	ND	215	108	200	2.48	
DRO >C10-C28*	<10.0	10.0	12/04/2023	ND	213	107	200	3.16	
EXT DRO >C28-C36	<10.0	10.0	12/04/2023	ND					

Surrogate: 1-Chlorooctane 90.1 % 48.2-134

Surrogate: 1-Chlorooctadecane 101 % 49.1-148

Cardinal Laboratories

\*=Accredited Analyte

PLEASE NOTE: Liability and Damages. Cardinal's liability and client's exclusive remedy for any claim arising, whether based in contract or tort, shall be limited to the amount paid by client for analyses. All claims, including those for negligence and any other cause whatsoever shall be deemed waived unless made in writing and received by Cardinal within thirty (30) days after completion of the applicable service. In no event shall Cardinal be liable for incidental or consequential damages, including, without limitation, business interruptions, loss of use, or loss of profits incurred by client, its subsidiaries, affiliates or successors arising out of or related to the performance of the services hereunder by Cardinal, regardless of whether such claim is based upon any of the above stated reasons or otherwise. Results relate only to the samples identified above. This report shall not be reproduced except in full with written approval of Cardinal Laboratories.

Celey D. Keene, Lab Director/Quality Manager



PHONE (575) 393-2326 ° 101 E. MARLAND ° HOBBS, NM 88240

**Analytical Results For:**

TERRACON CONSULTANTS  
 JOSEPH GUESNIER  
 5827 50TH ST. SUITE 1  
 LUBBOCK TX, 79424  
 Fax To:

Received: 12/01/2023  
 Reported: 12/06/2023  
 Project Name: CEDAR BREAKS LH  
 Project Number: KH237028  
 Project Location: DURANGO - EDDY

Sampling Date: 12/01/2023  
 Sampling Type: Soil  
 Sampling Condition: Cool & Intact  
 Sample Received By: Tamara Oldaker

**Sample ID: E SW 01.3 (H236467-03)**

BTEx 8021B		mg/kg		Analyzed By: JH/					
Analyte	Result	Reporting Limit	Analyzed	Method Blank	BS	% Recovery	True Value QC	RPD	Qualifier
Benzene*	<0.050	0.050	12/04/2023	ND	2.02	101	2.00	1.52	
Toluene*	<0.050	0.050	12/04/2023	ND	2.00	100	2.00	0.386	
Ethylbenzene*	<0.050	0.050	12/04/2023	ND	2.00	99.9	2.00	0.250	
Total Xylenes*	<0.150	0.150	12/04/2023	ND	5.90	98.3	6.00	0.317	
Total BTEX	<0.300	0.300	12/04/2023	ND					

Surrogate: 4-Bromofluorobenzene (PID) 115 % 71.5-134

Chloride, SM4500Cl-B		mg/kg		Analyzed By: AC					
Analyte	Result	Reporting Limit	Analyzed	Method Blank	BS	% Recovery	True Value QC	RPD	Qualifier
Chloride	<16.0	16.0	12/04/2023	ND	416	104	400	3.92	

TPH 8015M		mg/kg		Analyzed By: MS					
Analyte	Result	Reporting Limit	Analyzed	Method Blank	BS	% Recovery	True Value QC	RPD	Qualifier
GRO C6-C10*	<10.0	10.0	12/04/2023	ND	215	108	200	2.48	
DRO >C10-C28*	<10.0	10.0	12/04/2023	ND	213	107	200	3.16	
EXT DRO >C28-C36	<10.0	10.0	12/04/2023	ND					

Surrogate: 1-Chlorooctane 100 % 48.2-134

Surrogate: 1-Chlorooctadecane 111 % 49.1-148

Cardinal Laboratories

\*=Accredited Analyte

PLEASE NOTE: Liability and Damages. Cardinal's liability and client's exclusive remedy for any claim arising, whether based in contract or tort, shall be limited to the amount paid by client for analyses. All claims, including those for negligence and any other cause whatsoever shall be deemed waived unless made in writing and received by Cardinal within thirty (30) days after completion of the applicable service. In no event shall Cardinal be liable for incidental or consequential damages, including, without limitation, business interruptions, loss of use, or loss of profits incurred by client, its subsidiaries, affiliates or successors arising out of or related to the performance of the services hereunder by Cardinal, regardless of whether such claim is based upon any of the above stated reasons or otherwise. Results relate only to the samples identified above. This report shall not be reproduced except in full with written approval of Cardinal Laboratories.

Celey D. Keene, Lab Director/Quality Manager





PHONE (575) 393-2326 ° 101 E. MARLAND ° HOBBS, NM 88240

**Analytical Results For:**

TERRACON CONSULTANTS  
 JOSEPH GUESNIER  
 5827 50TH ST. SUITE 1  
 LUBBOCK TX, 79424  
 Fax To:

Received: 12/01/2023  
 Reported: 12/06/2023  
 Project Name: CEDAR BREAKS LH  
 Project Number: KH237028  
 Project Location: DURANGO - EDDY

Sampling Date: 12/01/2023  
 Sampling Type: Soil  
 Sampling Condition: Cool & Intact  
 Sample Received By: Tamara Oldaker

**Sample ID: W SW 01.3 (H236467-04)**

BTX 8021B		mg/kg		Analyzed By: JH/					
Analyte	Result	Reporting Limit	Analyzed	Method Blank	BS	% Recovery	True Value QC	RPD	Qualifier
Benzene*	<0.050	0.050	12/04/2023	ND	2.02	101	2.00	1.52	
Toluene*	<0.050	0.050	12/04/2023	ND	2.00	100	2.00	0.386	
Ethylbenzene*	<0.050	0.050	12/04/2023	ND	2.00	99.9	2.00	0.250	
Total Xylenes*	<0.150	0.150	12/04/2023	ND	5.90	98.3	6.00	0.317	
Total BTX	<0.300	0.300	12/04/2023	ND					

Surrogate: 4-Bromofluorobenzene (PID) 115 % 71.5-134

Chloride, SM4500Cl-B		mg/kg		Analyzed By: AC					
Analyte	Result	Reporting Limit	Analyzed	Method Blank	BS	% Recovery	True Value QC	RPD	Qualifier
Chloride	<16.0	16.0	12/04/2023	ND	416	104	400	3.92	

TPH 8015M		mg/kg		Analyzed By: MS					
Analyte	Result	Reporting Limit	Analyzed	Method Blank	BS	% Recovery	True Value QC	RPD	Qualifier
GRO C6-C10*	<10.0	10.0	12/04/2023	ND	215	108	200	2.48	
DRO >C10-C28*	<10.0	10.0	12/04/2023	ND	213	107	200	3.16	
EXT DRO >C28-C36	<10.0	10.0	12/04/2023	ND					

Surrogate: 1-Chlorooctane 85.8 % 48.2-134

Surrogate: 1-Chlorooctadecane 92.9 % 49.1-148

Cardinal Laboratories

\*=Accredited Analyte

PLEASE NOTE: Liability and Damages. Cardinal's liability and client's exclusive remedy for any claim arising, whether based in contract or tort, shall be limited to the amount paid by client for analyses. All claims, including those for negligence and any other cause whatsoever shall be deemed waived unless made in writing and received by Cardinal within thirty (30) days after completion of the applicable service. In no event shall Cardinal be liable for incidental or consequential damages, including, without limitation, business interruptions, loss of use, or loss of profits incurred by client, its subsidiaries, affiliates or successors arising out of or related to the performance of the services hereunder by Cardinal, regardless of whether such claim is based upon any of the above stated reasons or otherwise. Results relate only to the samples identified above. This report shall not be reproduced except in full with written approval of Cardinal Laboratories.

Celey D. Keene, Lab Director/Quality Manager



PHONE (575) 393-2326 ° 101 E. MARLAND ° HOBBS, NM 88240

**Analytical Results For:**

TERRACON CONSULTANTS  
 JOSEPH GUESNIER  
 5827 50TH ST. SUITE 1  
 LUBBOCK TX, 79424  
 Fax To:

Received: 12/01/2023  
 Reported: 12/06/2023  
 Project Name: CEDAR BREAKS LH  
 Project Number: KH237028  
 Project Location: DURANGO - EDDY

Sampling Date: 12/01/2023  
 Sampling Type: Soil  
 Sampling Condition: Cool & Intact  
 Sample Received By: Tamara Oldaker

**Sample ID: FS 01.3 (H236467-05)**

BTEx 8021B		mg/kg		Analyzed By: JH/						
Analyte	Result	Reporting Limit	Analyzed	Method Blank	BS	% Recovery	True Value QC	RPD	Qualifier	
Benzene*	<0.050	0.050	12/04/2023	ND	2.02	101	2.00	1.52		
Toluene*	<0.050	0.050	12/04/2023	ND	2.00	100	2.00	0.386		
Ethylbenzene*	<0.050	0.050	12/04/2023	ND	2.00	99.9	2.00	0.250		
Total Xylenes*	<0.150	0.150	12/04/2023	ND	5.90	98.3	6.00	0.317		
Total BTEx	<0.300	0.300	12/04/2023	ND						

Surrogate: 4-Bromofluorobenzene (PID) 115 % 71.5-134

Chloride, SM4500CI-B		mg/kg		Analyzed By: AC						
Analyte	Result	Reporting Limit	Analyzed	Method Blank	BS	% Recovery	True Value QC	RPD	Qualifier	
Chloride	<16.0	16.0	12/04/2023	ND	416	104	400	3.92		

TPH 8015M		mg/kg		Analyzed By: MS					
Analyte	Result	Reporting Limit	Analyzed	Method Blank	BS	% Recovery	True Value QC	RPD	Qualifier
GRO C6-C10*	<10.0	10.0	12/04/2023	ND	215	108	200	2.48	
DRO >C10-C28*	<10.0	10.0	12/04/2023	ND	213	107	200	3.16	
EXT DRO >C28-C36	<10.0	10.0	12/04/2023	ND					

Surrogate: 1-Chlorooctane 89.4 % 48.2-134

Surrogate: 1-Chlorooctadecane 96.4 % 49.1-148

Cardinal Laboratories

\*=Accredited Analyte

PLEASE NOTE: Liability and Damages. Cardinal's liability and client's exclusive remedy for any claim arising, whether based in contract or tort, shall be limited to the amount paid by client for analyses. All claims, including those for negligence and any other cause whatsoever shall be deemed waived unless made in writing and received by Cardinal within thirty (30) days after completion of the applicable service. In no event shall Cardinal be liable for incidental or consequential damages, including, without limitation, business interruptions, loss of use, or loss of profits incurred by client, its subsidiaries, affiliates or successors arising out of or related to the performance of the services hereunder by Cardinal, regardless of whether such claim is based upon any of the above stated reasons or otherwise. Results relate only to the samples identified above. This report shall not be reproduced except in full with written approval of Cardinal Laboratories.

Celey D. Keene, Lab Director/Quality Manager

PHONE (575) 393-2326 ° 101 E. MARLAND ° HOBBS, NM 88240

---

### Notes and Definitions

ND	Analyte NOT DETECTED at or above the reporting limit
RPD	Relative Percent Difference
**	Samples not received at proper temperature of 6°C or below.
***	Insufficient time to reach temperature.
-	Chloride by SM4500Cl-B does not require samples be received at or below 6°C Samples reported on an as received basis (wet) unless otherwise noted on report

---

Cardinal Laboratories

\*=Accredited Analyte

PLEASE NOTE: Liability and Damages. Cardinal's liability and client's exclusive remedy for any claim arising, whether based in contract or tort, shall be limited to the amount paid by client for analyses. All claims, including those for negligence and any other cause whatsoever shall be deemed waived unless made in writing and received by Cardinal within thirty (30) days after completion of the applicable service. In no event shall Cardinal be liable for incidental or consequential damages, including, without limitation, business interruptions, loss of use, or loss of profits incurred by client, its subsidiaries, affiliates or successors arising out of or related to the performance of the services hereunder by Cardinal, regardless of whether such claim is based upon any of the above stated reasons or otherwise. Results relate only to the samples identified above. This report shall not be reproduced except in full with written approval of Cardinal Laboratories.

A handwritten signature in black ink, appearing to read "Celey D. Keene".

---

Celey D. Keene, Lab Director/Quality Manager

---

**Terracon**

## CHAIN-OF-CUSTODY AND ANALYSIS REQUEST

[illegible]



**Casey, Travis**

---

**From:** Wells, Shelly, EMNRD <Shelly.Wells@emnrd.nm.gov>  
**Sent:** Tuesday, November 28, 2023 4:17 PM  
**To:** Casey, Travis  
**Cc:** Guesnier, Joseph R; Guadalupe Carrasco; Wells, Shelly, EMNRD; Bratcher, Michael, EMNRD  
**Subject:** RE: [EXTERNAL] Cedar Breaks LH St. #1 6" Steel/nAPP2306238104

Good evening Travis,

The OCD has received your notification. Include a copy of this and all notifications in the remedial and/or closure reports to ensure the notifications are documented in the project file.

Thank you,

*Shelly*

Shelly Wells \* Environmental Specialist-Advanced  
Environmental Bureau  
EMNRD-Oil Conservation Division  
1220 S. St. Francis Drive|Santa Fe, NM 87505  
(505)469-7520|[Shelly.Wells@emnrd.nm.gov](mailto:Shelly.Wells@emnrd.nm.gov)  
<http://www.emnrd.state.nm.us/OCD/>

---

**From:** Casey, Travis <Travis.Casey@terracon.com>  
**Sent:** Tuesday, November 28, 2023 3:40 PM  
**To:** Enviro, OCD, EMNRD <OCD.Enviro@emnrd.nm.gov>  
**Cc:** Guesnier, Joseph R <Joseph.Guesnier@terracon.com>; Guadalupe Carrasco <gcarrasco@durangomidstream.com>  
**Subject:** [EXTERNAL] Cedar Breaks LH St. #1 6" Steel/nAPP2306238104

CAUTION: This email originated outside of our organization. Exercise caution prior to clicking on links or opening attachments.

Good afternoon,

This is a 48hr notice of confirmation sampling for Cedar Breaks LH St. #1 6" Steel/nAPP2306238104 which will be conducted on December 1<sup>st</sup>, 2023 between 10am & 3pm.

Please contact Travis Casey at (575) 689-5949 or Joseph Guesnier (806) 544-9276 if there are any questions.

Thank you,

*Travis Casey*

Sr. Staff Scientist  
Project Manager



4526 W Pierce St, NM 88220

**D** (806) 507-7057 **M** (575) 689-5949

[Travis.Casey@terracon.com](mailto:Travis.Casey@terracon.com) | [Terracon.com](http://Terracon.com)



Terracon provides environmental, facilities, geotechnical, and materials consulting engineering services delivered with responsiveness, resourcefulness, and reliability.

---

Private and confidential as detailed here ([www.terracon.com/disclaimer](http://www.terracon.com/disclaimer)). If you cannot access the hyperlink, please e-mail sender.

**District I**  
1625 N. French Dr., Hobbs, NM 88240  
Phone:(575) 393-6161 Fax:(575) 393-0720  
**District II**  
811 S. First St., Artesia, NM 88210  
Phone:(575) 748-1283 Fax:(575) 748-9720  
**District III**  
1000 Rio Brazos Rd., Aztec, NM 87410  
Phone:(505) 334-6178 Fax:(505) 334-6170  
**District IV**  
1220 S. St Francis Dr., Santa Fe, NM 87505  
Phone:(505) 476-3470 Fax:(505) 476-3462

State of New Mexico  
Energy, Minerals and Natural Resources  
Oil Conservation Division  
1220 S. St Francis Dr.  
Santa Fe, NM 87505

QUESTIONS  
  
Action 301169

QUESTIONS

Operator: FRONTIER FIELD SERVICES, LLC 10077 Grogans Mill Rd. The Woodlands, TX 77380	OGRID: 221115
	Action Number: 301169
	Action Type: [C-141] Remediation Closure Request C-141 (C-141-v-Closure)

QUESTIONS

Prerequisites	
Incident ID (n#)	nAPP2306238104
Incident Name	NAPP2306238104 CEDAR BREAKS LH ST. 1 STEEL LINE @ 0
Incident Type	Natural Gas Release
Incident Status	Remediation Closure Report Received

Location of Release Source

Please answer all the questions in this group.

Site Name	CEDAR BREAKS LH ST. 1 STEEL LINE
Date Release Discovered	03/02/2023
Surface Owner	State

Incident Details

Please answer all the questions in this group.

Incident Type	Natural Gas Release
Did this release result in a fire or is the result of a fire	No
Did this release result in any injuries	No
Has this release reached or does it have a reasonable probability of reaching a watercourse	No
Has this release endangered or does it have a reasonable probability of endangering public health	No
Has this release substantially damaged or will it substantially damage property or the environment	No
Is this release of a volume that is or may with reasonable probability be detrimental to fresh water	No

Nature and Volume of Release

Material(s) released, please answer all that apply below. Any calculations or specific justifications for the volumes provided should be attached to the follow-up C-141 submission.

Crude Oil Released (bbls) Details	Not answered.
Produced Water Released (bbls) Details	Not answered.
Is the concentration of chloride in the produced water >10,000 mg/l	Not answered.
Condensate Released (bbls) Details	Cause: Corrosion   Pipeline (Any)   Condensate   Released: 2 BBL   Recovered: 0 BBL   Lost: 2 BBL.
Natural Gas Vented (Mcf) Details	Cause: Corrosion   Pipeline (Any)   Natural Gas Vented   Released: 112 MCF   Recovered: 0 MCF   Lost: 112 MCF.
Natural Gas Flared (Mcf) Details	Not answered.
Other Released Details	Not answered.
Are there additional details for the questions above (i.e. any answer containing Other, Specify, Unknown, and/or Fire, or any negative lost amounts)	Not answered.

**District I**

1625 N. French Dr., Hobbs, NM 88240  
Phone:(575) 393-6161 Fax:(575) 393-0720

**District II**

811 S. First St., Artesia, NM 88210  
Phone:(575) 748-1283 Fax:(575) 748-9720

**District III**

1000 Rio Brazos Rd., Aztec, NM 87410  
Phone:(505) 334-6178 Fax:(505) 334-6170

**District IV**

1220 S. St Francis Dr., Santa Fe, NM 87505  
Phone:(505) 476-3470 Fax:(505) 476-3462

**State of New Mexico**  
**Energy, Minerals and Natural Resources**  
**Oil Conservation Division**  
**1220 S. St Francis Dr.**  
**Santa Fe, NM 87505**

QUESTIONS, Page 2

Action 301169

**QUESTIONS (continued)**

Operator: FRONTIER FIELD SERVICES, LLC 10077 Grogans Mill Rd. The Woodlands, TX 77380	OGRID:	221115
	Action Number:	301169
	Action Type:	[C-141] Remediation Closure Request C-141 (C-141-v-Closure)

**QUESTIONS**

<b>Nature and Volume of Release (continued)</b>	
Is this a gas only submission (i.e. only significant Mcf values reported)	<b>Yes, according to supplied volumes this will be treated as a "gas only" report.</b>
Was this a major release as defined by Subsection A of 19.15.29.7 NMAC	<b>No</b>
Reasons why this would be considered a submission for a notification of a major release	<i>Unavailable.</i>
<i>With the implementation of the 19.15.27 NMAC (05/25/2021), venting and/or flaring of natural gas (i.e. gas only) are to be submitted on the C-129 form.</i>	

**Initial Response**

*The responsible party must undertake the following actions immediately unless they could create a safety hazard that would result in injury.*

The source of the release has been stopped	<b>True</b>
The impacted area has been secured to protect human health and the environment	<b>True</b>
Released materials have been contained via the use of berms or dikes, absorbent pads, or other containment devices	<b>True</b>
All free liquids and recoverable materials have been removed and managed appropriately	<b>True</b>
If all the actions described above have not been undertaken, explain why	<i>Not answered.</i>

*Per Paragraph (4) of Subsection B of 19.15.29.8 NMAC the responsible party may commence remediation immediately after discovery of a release. If remediation has begun, please prepare and attach a narrative of actions to date in the follow-up C-141 submission. If remedial efforts have been successfully completed or if the release occurred within a lined containment area (see Subparagraph (a) of Paragraph (5) of Subsection A of 19.15.29.11 NMAC), please prepare and attach all information needed for closure evaluation in the follow-up C-141 submission.*

I hereby certify that the information given above is true and complete to the best of my knowledge and understand that pursuant to OCD rules and regulations all operators are required to report and/or file certain release notifications and perform corrective actions for releases which may endanger public health or the environment. The acceptance of a C-141 report by the OCD does not relieve the operator of liability should their operations have failed to adequately investigate and remediate contamination that pose a threat to groundwater, surface water, human health or the environment. In addition, OCD acceptance of a C-141 report does not relieve the operator of responsibility for compliance with any other federal, state, or local laws and/or regulations.

I hereby agree and sign off to the above statement	Name: Guadalupe Carrasco Title: Sr. Environmental Specialist Email: gcarrasco@durangomidstream.com Date: 01/08/2024
--	--



**District I**

1625 N. French Dr., Hobbs, NM 88240  
Phone:(575) 393-6161 Fax:(575) 393-0720

**District II**

811 S. First St., Artesia, NM 88210  
Phone:(575) 748-1283 Fax:(575) 748-9720

**District III**

1000 Rio Brazos Rd., Aztec, NM 87410  
Phone:(505) 334-6178 Fax:(505) 334-6170

**District IV**

1220 S. St Francis Dr., Santa Fe, NM 87505  
Phone:(505) 476-3470 Fax:(505) 476-3462

**State of New Mexico**  
**Energy, Minerals and Natural Resources**  
**Oil Conservation Division**  
**1220 S. St Francis Dr.**  
**Santa Fe, NM 87505**

QUESTIONS, Page 3

Action 301169

**QUESTIONS (continued)**

Operator: FRONTIER FIELD SERVICES, LLC 10077 Grogans Mill Rd. The Woodlands, TX 77380	OGRID: 221115
	Action Number: 301169
	Action Type: [C-141] Remediation Closure Request C-141 (C-141-v-Closure)

**QUESTIONS****Site Characterization**

Please answer all the questions in this group (only required when seeking remediation plan approval and beyond). This information must be provided to the appropriate district office no later than 90 days after the release discovery date.

What is the shallowest depth to groundwater beneath the area affected by the release in feet below ground surface (ft bgs)	Between 75 and 100 (ft.)
What method was used to determine the depth to ground water	NM OSE iWaters Database Search
Did this release impact groundwater or surface water	No
<b>What is the minimum distance, between the closest lateral extents of the release and the following surface areas:</b>	
A continuously flowing watercourse or any other significant watercourse	Greater than 5 (mi.)
Any lakebed, sinkhole, or playa lake (measured from the ordinary high-water mark)	Between 1 and 5 (mi.)
An occupied permanent residence, school, hospital, institution, or church	Greater than 5 (mi.)
A spring or a private domestic fresh water well used by less than five households for domestic or stock watering purposes	Between 1 and 5 (mi.)
Any other fresh water well or spring	Between 1 and 5 (mi.)
Incorporated municipal boundaries or a defined municipal fresh water well field	Greater than 5 (mi.)
A wetland	Greater than 5 (mi.)
A subsurface mine	Greater than 5 (mi.)
An (non-karst) unstable area	Greater than 5 (mi.)
Categorize the risk of this well / site being in a karst geology	Low
A 100-year floodplain	Greater than 5 (mi.)
Did the release impact areas not on an exploration, development, production, or storage site	No

**Remediation Plan**

Please answer all the questions that apply or are indicated. This information must be provided to the appropriate district office no later than 90 days after the release discovery date.

Requesting a remediation plan approval with this submission	Yes
Attach a comprehensive report demonstrating the lateral and vertical extents of soil contamination associated with the release have been determined, pursuant to 19.15.29.11 NMAC and 19.15.29.13 NMAC.	
Have the lateral and vertical extents of contamination been fully delineated	Yes
Was this release entirely contained within a lined containment area	No

**Soil Contamination Sampling:** (Provide the highest observable value for each, in milligrams per kilograms.)

Chloride (EPA 300.0 or SM4500 Cl B)	80
TPH (GRO+DRO+MRO) (EPA SW-846 Method 8015M)	118.8
GRO+DRO (EPA SW-846 Method 8015M)	17.8
BTEX (EPA SW-846 Method 8021B or 8260B)	0
Benzene (EPA SW-846 Method 8021B or 8260B)	0

Per Subsection B of 19.15.29.11 NMAC unless the site characterization report includes completed efforts at remediation, the report must include a proposed remediation plan in accordance with 19.15.29.12 NMAC, which includes the anticipated timelines for beginning and completing the remediation.

On what estimated date will the remediation commence	03/29/2023
On what date will (or did) the final sampling or liner inspection occur	12/01/2023
On what date will (or was) the remediation complete(d)	03/29/2023
What is the estimated surface area (in square feet) that will be reclaimed	100
What is the estimated volume (in cubic yards) that will be reclaimed	20
What is the estimated surface area (in square feet) that will be remediated	100
What is the estimated volume (in cubic yards) that will be remediated	20

These estimated dates and measurements are recognized to be the best guess or calculation at the time of submission and may (be) change(d) over time as more remediation efforts are completed.

The OCD recognizes that proposed remediation measures may have to be minimally adjusted in accordance with the physical realities encountered during remediation. If the responsible party has any need to significantly deviate from the remediation plan proposed, then it should consult with the division to determine if another remediation plan submission is required.

**District I**

1625 N. French Dr., Hobbs, NM 88240  
Phone:(575) 393-6161 Fax:(575) 393-0720

**District II**

811 S. First St., Artesia, NM 88210  
Phone:(575) 748-1283 Fax:(575) 748-9720

**District III**

1000 Rio Brazos Rd., Aztec, NM 87410  
Phone:(505) 334-6178 Fax:(505) 334-6170

**District IV**

1220 S. St Francis Dr., Santa Fe, NM 87505  
Phone:(505) 476-3470 Fax:(505) 476-3462

**State of New Mexico**  
**Energy, Minerals and Natural Resources**  
**Oil Conservation Division**  
**1220 S. St Francis Dr.**  
**Santa Fe, NM 87505**

QUESTIONS, Page 4

Action 301169

**QUESTIONS (continued)**

Operator: FRONTIER FIELD SERVICES, LLC 10077 Grogans Mill Rd. The Woodlands, TX 77380	OGRID: 221115
	Action Number: 301169
	Action Type: [C-141] Remediation Closure Request C-141 (C-141-v-Closure)

**QUESTIONS**

<b>Remediation Plan (continued)</b>	
<i>Please answer all the questions that apply or are indicated. This information must be provided to the appropriate district office no later than 90 days after the release discovery date.</i>	
<b>This remediation will (or is expected to) utilize the following processes to remediate / reduce contaminants:</b>	
<i>(Select all answers below that apply.)</i>	
(Ex Situ) Excavation and <b>off-site</b> disposal (i.e. dig and haul, hydrovac, etc.)	Yes
Which OCD approved facility will be used for <b>off-site</b> disposal	LEA LAND LANDFILL [fEEM0112342028]
<b>OR</b> which OCD approved well (API) will be used for <b>off-site</b> disposal	Not answered.
<b>OR</b> is the <b>off-site</b> disposal site, to be used, out-of-state	Not answered.
<b>OR</b> is the <b>off-site</b> disposal site, to be used, an NMED facility	Not answered.
(Ex Situ) Excavation and <b>on-site</b> remediation (i.e. On-Site Land Farms)	No
(In Situ) Soil Vapor Extraction	No
(In Situ) Chemical processing (i.e. Soil Shredding, Potassium Permanganate, etc.)	No
(In Situ) Biological processing (i.e. Microbes / Fertilizer, etc.)	No
(In Situ) Physical processing (i.e. Soil Washing, Gypsum, Disking, etc.)	No
Ground Water Abatement pursuant to 19.15.30 NMAC	No
OTHER (Non-listed remedial process)	No
<i>Per Subsection B of 19.15.29.11 NMAC unless the site characterization report includes completed efforts at remediation, the report must include a proposed remediation plan in accordance with 19.15.29.12 NMAC, which includes the anticipated timelines for beginning and completing the remediation.</i>	
I hereby certify that the information given above is true and complete to the best of my knowledge and understand that pursuant to OCD rules and regulations all operators are required to report and/or file certain release notifications and perform corrective actions for releases which may endanger public health or the environment. The acceptance of a C-141 report by the OCD does not relieve the operator of liability should their operations have failed to adequately investigate and remediate contamination that pose a threat to groundwater, surface water, human health or the environment. In addition, OCD acceptance of a C-141 report does not relieve the operator of responsibility for compliance with any other federal, state, or local laws and/or regulations.	
I hereby agree and sign off to the above statement	Name: Guadalupe Carrasco Title: Sr. Environmental Specialist Email: gcarrasco@durangomidstream.com Date: 01/08/2024
<i>The OCD recognizes that proposed remediation measures may have to be minimally adjusted in accordance with the physical realities encountered during remediation. If the responsible party has any need to significantly deviate from the remediation plan proposed, then it should consult with the division to determine if another remediation plan submission is required.</i>	

**District I**  
1625 N. French Dr., Hobbs, NM 88240  
Phone:(575) 393-6161 Fax:(575) 393-0720  
**District II**  
811 S. First St., Artesia, NM 88210  
Phone:(575) 748-1283 Fax:(575) 748-9720  
**District III**  
1000 Rio Brazos Rd., Aztec, NM 87410  
Phone:(505) 334-6178 Fax:(505) 334-6170  
**District IV**  
1220 S. St Francis Dr., Santa Fe, NM 87505  
Phone:(505) 476-3470 Fax:(505) 476-3462

**State of New Mexico**  
**Energy, Minerals and Natural Resources**  
**Oil Conservation Division**  
**1220 S. St Francis Dr.**  
**Santa Fe, NM 87505**

QUESTIONS, Page 5  
  
Action 301169

**QUESTIONS (continued)**

Operator:  FRONTIER FIELD SERVICES, LLC 10077 Grogans Mill Rd. The Woodlands, TX 77380	OGRID:
	221115
	Action Number:
	301169
Action Type:	
[C-141] Remediation Closure Request C-141 (C-141-v-Closure)	

**QUESTIONS**

<b>Deferral Requests Only</b>	
Only answer the questions in this group if seeking a deferral upon approval this submission. Each of the following items must be confirmed as part of any request for deferral of remediation.	
Requesting a deferral of the remediation closure due date with the approval of this submission	No

**District I**

1625 N. French Dr., Hobbs, NM 88240  
Phone:(575) 393-6161 Fax:(575) 393-0720

**District II**

811 S. First St., Artesia, NM 88210  
Phone:(575) 748-1283 Fax:(575) 748-9720

**District III**

1000 Rio Brazos Rd., Aztec, NM 87410  
Phone:(505) 334-6178 Fax:(505) 334-6170

**District IV**

1220 S. St Francis Dr., Santa Fe, NM 87505  
Phone:(505) 476-3470 Fax:(505) 476-3462

**State of New Mexico**  
**Energy, Minerals and Natural Resources**  
**Oil Conservation Division**  
**1220 S. St Francis Dr.**  
**Santa Fe, NM 87505**

QUESTIONS, Page 6

Action 301169

**QUESTIONS (continued)**

Operator: FRONTIER FIELD SERVICES, LLC 10077 Grogans Mill Rd. The Woodlands, TX 77380	OGRID:	221115
	Action Number:	301169
	Action Type:	[C-141] Remediation Closure Request C-141 (C-141-v-Closure)

**QUESTIONS**

Sampling Event Information	
Last sampling notification (C-141N) recorded	301163
Sampling date pursuant to Subparagraph (a) of Paragraph (1) of Subsection D of 19.15.29.12 NMAC	12/01/2023
What was the (estimated) number of samples that were to be gathered	5
What was the sampling surface area in square feet	100

**Remediation Closure Request**

*Only answer the questions in this group if seeking remediation closure for this release because all remediation steps have been completed.*

Requesting a remediation closure approval with this submission	Yes
Have the lateral and vertical extents of contamination been fully delineated	Yes
Was this release entirely contained within a lined containment area	No
All areas reasonably needed for production or subsequent drilling operations have been stabilized, returned to the sites existing grade, and have a soil cover that prevents ponding of water, minimizing dust and erosion	Yes
What was the total surface area (in square feet) remediated	100
What was the total volume (cubic yards) remediated	20
All areas not reasonably needed for production or subsequent drilling operations have been reclaimed to contain a minimum of four feet of non-waste contain earthen material with concentrations less than 600 mg/kg chlorides, 100 mg/kg TPH, 50 mg/kg BTEX, and 10 mg/kg Benzene	Yes
What was the total surface area (in square feet) reclaimed	100
What was the total volume (in cubic yards) reclaimed	20
Summarize any additional remediation activities not included by answers (above)	None

*The responsible party must attach information demonstrating they have complied with all applicable closure requirements and any conditions or directives of the OCD. This demonstration should be in the form of a comprehensive report (in .pdf format) including a scaled site map, sampling diagrams, relevant field notes, photographs of any excavation prior to backfilling, laboratory data including chain of custody documents of final sampling, and a narrative of the remedial activities. Refer to 19.15.29.12 NMAC.*

I hereby certify that the information given above is true and complete to the best of my knowledge and understand that pursuant to OCD rules and regulations all operators are required to report and/or file certain release notifications and perform corrective actions for releases which may endanger public health or the environment. The acceptance of a C-141 report by the OCD does not relieve the operator of liability should their operations have failed to adequately investigate and remediate contamination that pose a threat to groundwater, surface water, human health or the environment. In addition, OCD acceptance of a C-141 report does not relieve the operator of responsibility for compliance with any other federal, state, or local laws and/or regulations. The responsible party acknowledges they must substantially restore, reclaim, and re-vegetate the impacted surface area to the conditions that existed prior to the release or their final land use in accordance with 19.15.29.13 NMAC including notification to the OCD when reclamation and re-vegetation are complete.

I hereby agree and sign off to the above statement	Name: Guadalupe Carrasco Title: Sr. Environmental Specialist Email: gcarrasco@durangomidstream.com Date: 01/08/2024
--	--



**District I**  
1625 N. French Dr., Hobbs, NM 88240  
Phone:(575) 393-6161 Fax:(575) 393-0720  
**District II**  
811 S. First St., Artesia, NM 88210  
Phone:(575) 748-1283 Fax:(575) 748-9720  
**District III**  
1000 Rio Brazos Rd., Aztec, NM 87410  
Phone:(505) 334-6178 Fax:(505) 334-6170  
**District IV**  
1220 S. St Francis Dr., Santa Fe, NM 87505  
Phone:(505) 476-3470 Fax:(505) 476-3462

State of New Mexico  
Energy, Minerals and Natural Resources  
Oil Conservation Division  
1220 S. St Francis Dr.  
Santa Fe, NM 87505

QUESTIONS, Page 7  
  
Action 301169

QUESTIONS (continued)

Operator: FRONTIER FIELD SERVICES, LLC 10077 Grogans Mill Rd. The Woodlands, TX 77380	OGRID: 221115
	Action Number: 301169
	Action Type: [C-141] Remediation Closure Request C-141 (C-141-v-Closure)

QUESTIONS

Reclamation Report	
Only answer the questions in this group if all reclamation steps have been completed.	
Requesting a reclamation approval with this submission	No

**District I**  
1625 N. French Dr., Hobbs, NM 88240  
Phone:(575) 393-6161 Fax:(575) 393-0720  
**District II**  
811 S. First St., Artesia, NM 88210  
Phone:(575) 748-1283 Fax:(575) 748-9720  
**District III**  
1000 Rio Brazos Rd., Aztec, NM 87410  
Phone:(505) 334-6178 Fax:(505) 334-6170  
**District IV**  
1220 S. St Francis Dr., Santa Fe, NM 87505  
Phone:(505) 476-3470 Fax:(505) 476-3462

**State of New Mexico**  
**Energy, Minerals and Natural Resources**  
**Oil Conservation Division**  
**1220 S. St Francis Dr.**  
**Santa Fe, NM 87505**

CONDITIONS  
  
Action 301169

CONDITIONS

Operator: FRONTIER FIELD SERVICES, LLC 10077 Grogans Mill Rd. The Woodlands, TX 77380	OGRID:
	221115
	Action Number: 301169
	Action Type: [C-141] Remediation Closure Request C-141 (C-141-v-Closure)

CONDITIONS

Created By	Condition	Condition Date
scwells	None	1/10/2024