



January 8, 2024

Brittany Hall
Projects Environmental Specialist
Oil Conservation Division
New Mexico Energy, Minerals and Natural Resources Department
1220 South St. Francis Drive
Santa Fe, NM 87505

**Re: Release Characterization and Remediation Work Plan
ConocoPhillips Company
Stampede Federal WC COM 34 #001H
Unit Letter E, Section 34, Township 26 South, Range 31 East
Eddy County, New Mexico
Incident ID# nAB1431639646**

Ms. Hall,

Tetra Tech, Inc. (Tetra Tech) was contacted by ConocoPhillips Company (ConocoPhillips) to assess a historical release at the Stampede Federal WC Com 34 #001H (API No. 30-015-42123). The release footprint is located in Public Land Survey System (PLSS) Unit Letter E, Section 34, Township 26 South, and Range 31 East, in Eddy County, New Mexico (Site). The approximate release point occurred at coordinates 32.000917°, -103.773324°, as shown on Figures 1 and 2.

BACKGROUND

According to the State of New Mexico Oil Conservation Division (NMOCD) C-141 Initial Report, the release was discovered on November 3, 2014. The C-141 reports that the #1 pony rod clamp failed while pumping a slick water stage (fresh water with friction reducing agent), causing damage to the suction valve on the #11 frac pump and allowing discharge pressure to reach the suction manifold and causing the 4-inch discharge hose to burst. Approximately 20 barrels (bbls) of "slick water" was released onto location. A vacuum truck on standby began picking up the spilled fluid immediately. Approximately 19 bbls of "slick water" was recovered. The remaining spilled fluid was covered with absorbent pads and removed prior to high wind and heavy rain covering the area. The NMOCD approved the initial C-141 on November 10, 2014, and subsequently assigned the release the Incident ID nAB1431639646. The initial C-141 form is included in Appendix A.

This incident is included in an Agreed Compliance Order-Releases (ACO-R) between ConocoPhillips and the NMOCD signed on May 7 and 9, 2019, respectively.

LAND OWNERSHIP

According to the NMOCD Oil and Gas Map, the Site is located on Bureau of Land Management (BLM) Lands. The BLM will be notified prior to any remedial activities commencing for this incident.

Tetra Tech

901 West Wall St., Suite 100, Midland, TX 79701

Tel 432.682.4559 Fax 432.682.3946 www.tetrattech.com

SITE CHARACTERIZATION

A site characterization was performed and no sinkholes, residences, schools, hospitals, institutions, churches, springs, private domestic water wells, playa lakes, stream bodies, wetlands, incorporated municipal boundaries, subsurface mines, or floodplains are located within the distances specified in 19.15.29 New Mexico Administrative Code (NMAC). The Site is in an area of medium karst potential.

There are no water wells listed in the New Mexico Office of the State Engineer (NMOSE) database located within approximately ½ mile (800 meters) of the Site. According to data from one (1) water well listed in the NMOSE database within approximately 3.6 miles (5,897 meters) of the Site, the minimum depth to groundwater is 295 feet below ground surface (bgs). The site characterization data is presented in Appendix B.

REGULATORY FRAMEWORK

Based upon the release footprint, and in accordance with Subsection E of 19.15.29.12 NMAC, per 19.15.29.11 NMAC, the site characterization data was used to determine recommended remedial action levels (RRALs) for benzene, toluene, ethylbenzene, and xylene (collectively referred to as BTEX), total petroleum hydrocarbons (TPH), and chlorides in soil.

Based on the site characterization conducted and in accordance with Table I of 19.15.29.12 NMAC, the RRALs for the Site are as follows:

Constituent	Site RRAL
Chloride	600 mg/kg
TPH (GRO+DRO+MRO)	100 mg/kg
BTEX	50 mg/kg
Benzene	10 mg/kg

2020 VISUAL SITE INSPECTION AND CLOSURE REQUEST

Tetra Tech, on behalf of ConocoPhillips, conducted a records review and a visual inspection of the release in 2020. On June 8, 2020, Tetra Tech personnel were onsite to evaluate the release area. The formerly impacted area was identified from the description in the C-141. Review of available historical aerial imagery did not reveal evidence of the release. No surficial staining was noted at the point of the release on the well pad, in the adjacent pasture area, nor along the adjacent lease road. The approximate release point is presented in Figure 3.

Tetra Tech completed a Closure Letter Report dated October 15, 2020, and submitted the report to NMOCD as part of the ACO submittals via the online file sharing platform CentreStack. A copy of the Closure Letter Report is available in the NMOCD online incident files.

The Closure Letter Report was rejected by NMOCD on April 18, 2023, with the following comments:

- *“Closure for this incident is not approved.*
- *The OCD requires that this release be Remediated according to 19.15.29.12 NMAC and 19.15.29.13 NMAC as they apply to this release and resubmit a closure report by 07/17/2023.”*

An extension request for this incident was submitted to the NMOCD and approved on September 25, 2023, for a due date of December 1, 2023. A second extension request was made on December 1, 2023 and approved on December 4, 2023 for a revised due date of January 30, 2024. Regulatory correspondence is included in Appendix C.

2023 SITE ASSESSMENT

Tetra Tech personnel were initially onsite on October 27, 2023, to conduct assessment activities at the Site. Five (5) hand auger borings (AH-3 through AH-7) were installed to 1-foot bgs around the perimeter to achieve horizontal delineation. Two (2) hand auger borings were installed within the apparent release extent to achieve vertical delineation. Hand auger refusal was met at roughly 2 feet bgs; therefore, vertical delineation was not achieved due to the dense subsurface lithology beneath the release footprint.

Tetra Tech remobilized to the site on December 11, 2023 to install two (2) trenches (T-1 and T-2) to 3 feet bgs using a backhoe to evaluate the vertical extents of the release footprint. An additional hand auger boring (AH-8) was installed to the east of the release extent to 1-foot bgs to further refine the horizontal extent of the release. Trench T-1 was installed as close as possible to AH-1; however, due to the presence of production equipment within the release extent, a 10-foot distance was maintained between the heavy machinery used for sampling and the wellhead for safety reasons. Boring locations from the October and December 2023 sampling event are presented in Figure 3. Photographic documentation of the Site is included in Appendix D.

A total of sixteen (16) soil samples were collected from the seven borings and sent to Cardinal Laboratories in Hobbs, New Mexico to be analyzed for chloride via EPA Method 300.0, TPH via EPA Method 8015M, and BTEX via EPA Method 8261B. A copy of the laboratory analytical report and chain-of-custody documentation are included in Appendix E.

SUMMARY OF RESULTS

The laboratory analytical results from the October and December 2023 assessments are summarized in Table 1. Analytical results associated with the 0-1 foot, 1-1.5 feet, and 1.5-2.5 feet sample intervals at AH-1 exceeded the Site RRALs for chloride (600 mg/kg). There were no other analytical results which exceeded the Site RRALs for any of the analyzed constituents. Horizontal delineation of the release was achieved as a result of the October and December 2023 additional assessment activities. Vertical delineation was not fully delineated at AH-1 due to hand auger refusal at this location; however, T-1 was installed to 3 feet bgs with no analytical results exceeding the Site RRALs.

REMEDIATION WORK PLAN

Based on the NMOCD rejection of the 2020 Closure Letter Report and the collected analytical results, ConocoPhillips proposes to remove the impacted material as shown in Figure 4. The release footprint in the area of AH-1 with soil concentrations above the Site RRALs for chloride will be excavated using heavy equipment (backhoes, hoe rams, and track hoes) to a maximum depth of 3 feet below the surrounding surface or until a representative sample from the walls and bottom of the excavation is below the RRALs. During the proposed remedial activities, AH-1 will be vertically delineated through a floor confirmation sampling and fully remediated. Areas in close proximity to pressurized lines or other production equipment will be hand-dug to a depth of 3 feet or the maximum extent practicable and heavy equipment will come no more than 4 feet from any pressurized lines.

Excavated soils will be transported offsite and disposed of at an NMOCD-approved or permitted facility. The responsible party will notify the OCD two (2) business days prior to conducting final confirmation sampling pursuant to 19.15.29.12.D(1)(a) NMAC, using a Notification of Sampling (C-141N) application.

Confirmation bottom and sidewall samples representative of no more than 400 square feet will be collected for verification of remedial activities, and analyzed for TPH, BTEX, and chlorides as shown in Figure 5. Once results are received, the excavation will then be backfilled with clean material to surface grade. The estimated volume of material to be remediated is approximately 30 cubic yards.

CONCLUSION

Based on the results of the 2023 site assessment and characterization, ConocoPhillips will remediate soils within the release extent impacted with chlorides above Site RRALs. The proposed remediation activities

Release Characterization and Remediation Work Plan
January 8, 2024

ConocoPhillips

will be conducted within 90 days of acceptance of the proposed plan. If you have any questions concerning the additional assessment activities for the Site or the proposed remediation work plan, please call me at (512) 596-8201 or Christian at (512) 338-2861.

Sincerely,
Tetra Tech, Inc.



Lisbeth Chavira
Staff Geoscientist



Christian M. Llull, P.G.
Program Manager

cc:
Mr. Moises Cantu Garcia, PBU – ConocoPhillips

LIST OF ATTACHMENTS

Figures:

- Figure 1 – Overview Map
- Figure 2 – Topographic Map
- Figure 3 – Approximate Release Extent and Site Assessment
- Figure 4 – Proposed Remediation Extent
- Figure 5 – Alternative Confirmation Plan

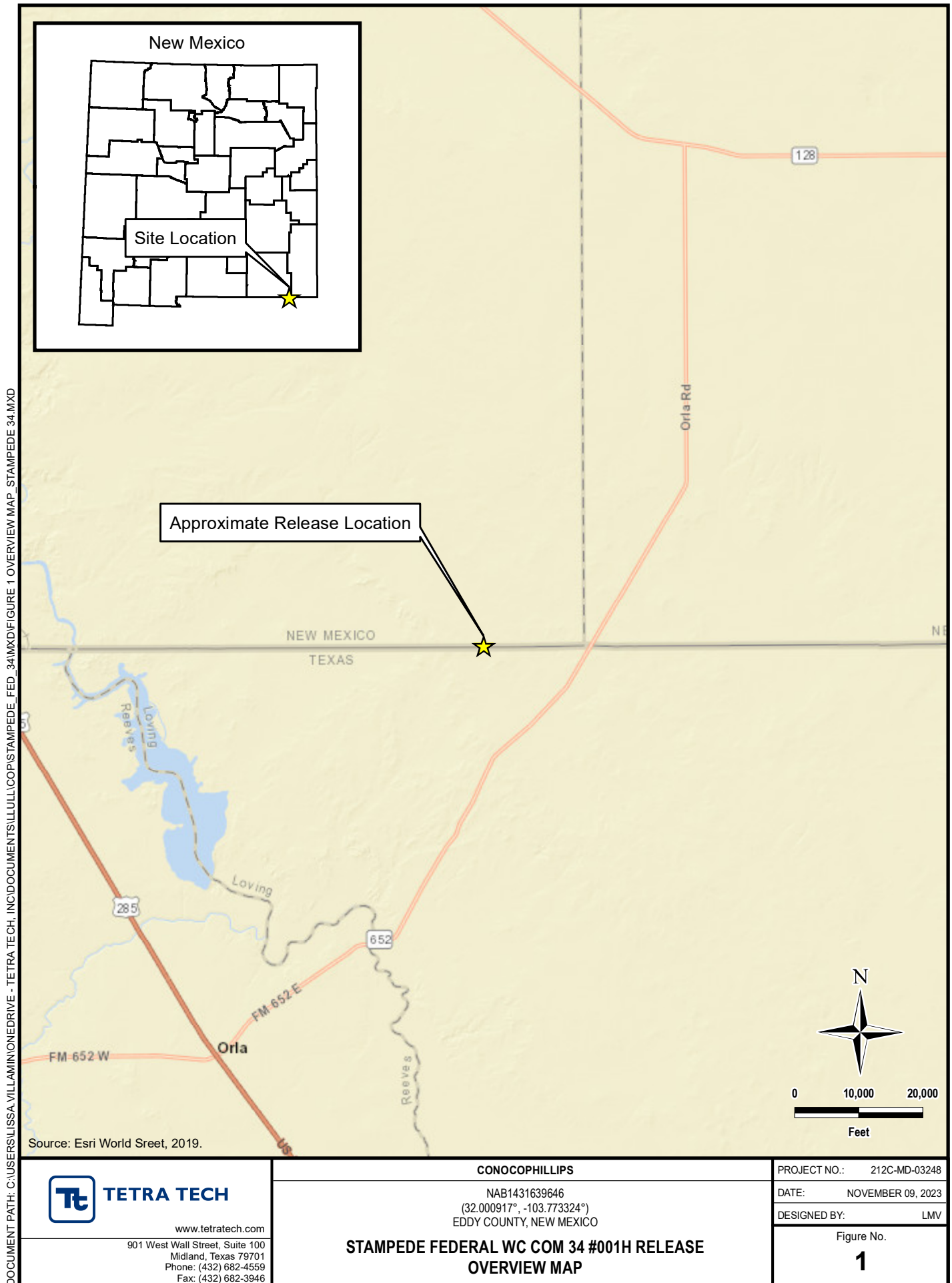
Tables:

- Table 1 – Summary of Analytical Results – 2023 Soil Assessment

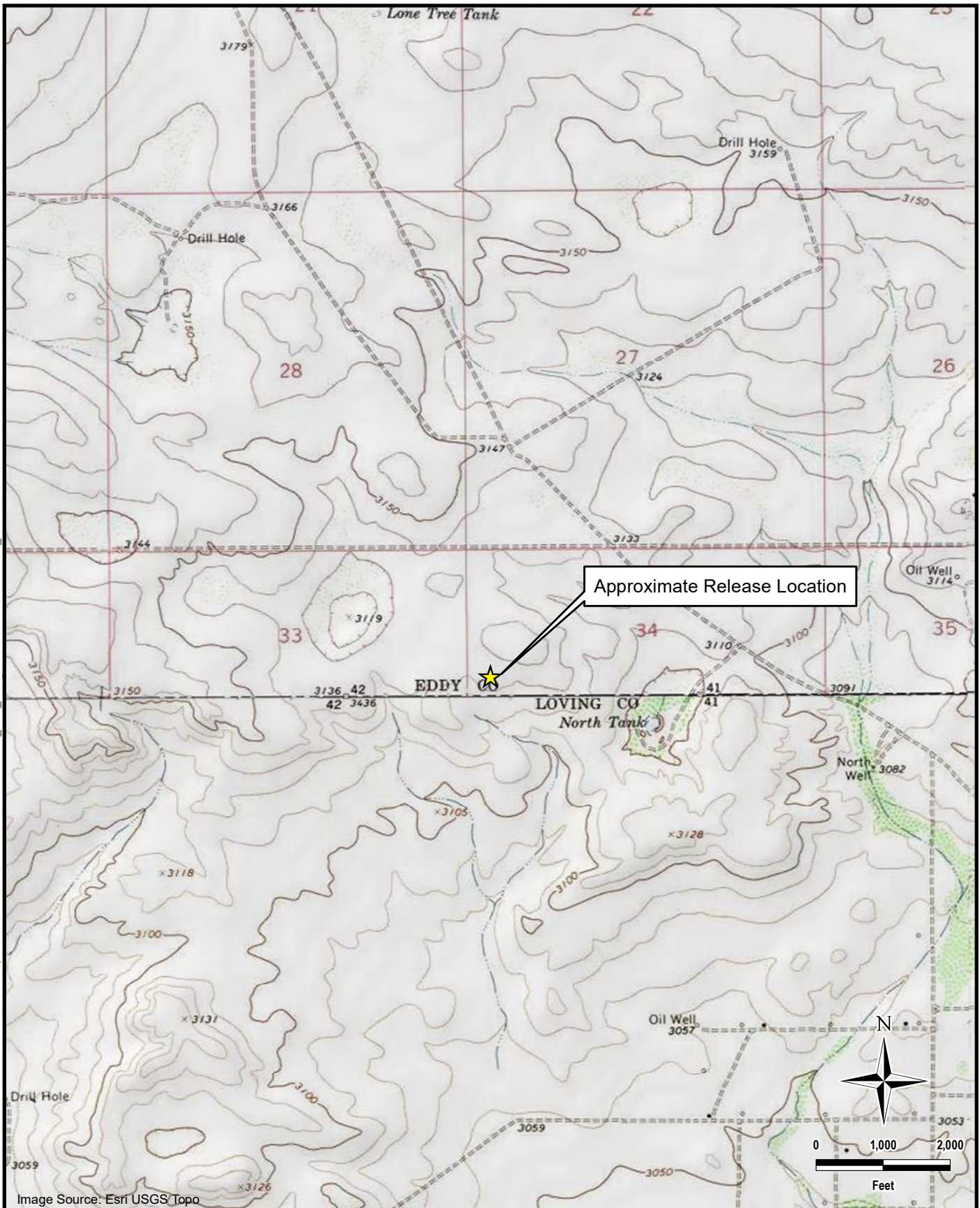
Appendices:

- Appendix A – C-141 Forms
- Appendix B – Site Characterization Data
- Appendix C – Regulatory Correspondence
- Appendix D – Photographic Documentation
- Appendix E – Laboratory Analytical Data

FIGURES



DOCUMENT PATH: C:\USERS\ISSA.VILLAMONEDRIVE - TETRA TECH\INC\DOCUMENTS\ILLU\COPI\STAMPEDE FED_34\MXD\FIGURE 2 TOPO MAP STAMPEDE 34.MXD

**TETRA TECH**

www.tetrattech.com

901 West Wall Street, Suite 100
Midland, Texas 79701
Phone: (432) 682-4559
Fax: (432) 682-3946

CONOCOPHILLIPS

NAB1431639646
(32.000917°, -103.773324°)
EDDY COUNTY, NEW MEXICO

**STAMPEDE FEDERAL WC COM 34 #001H RELEASE
TOPOGRAPHIC MAP**

PROJECT NO.: 212C-MD-03248

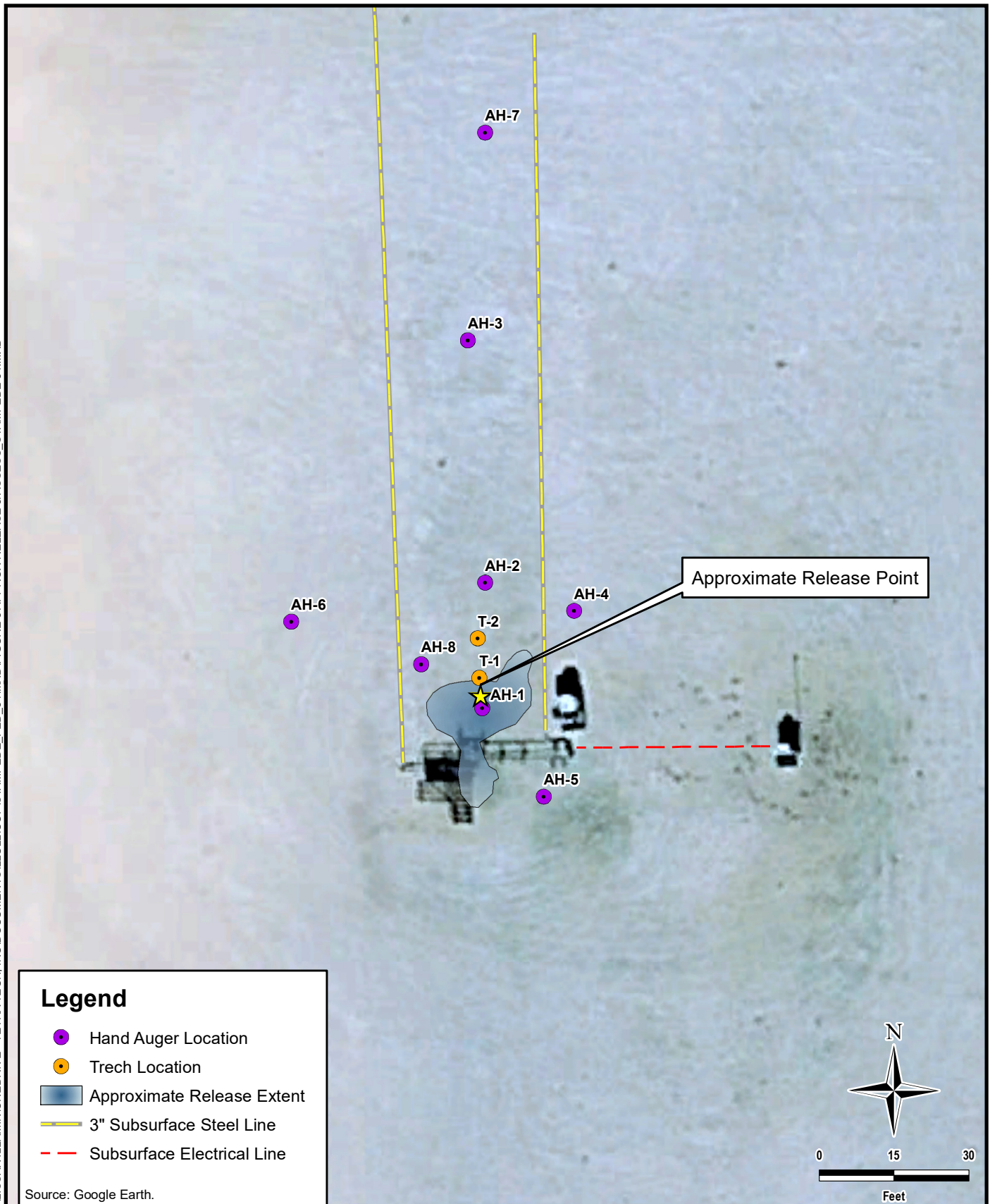
DATE: NOVEMBER 09, 2023

DESIGNED BY: LMV

Figure No.

2

DOCUMENT PATH: C:\USERS\LISSA.VILLAMINIONEDRIVE - TETRA TECH, INC\DOCUMENTS\ILLUICOPI\STAMPEDE_FED_34\MXD\FIGURE 3 APPROX RELEASE & ASSESS_STAMPEDE 34.MXD

**TETRA TECH**

www.tetrattech.com

901 West Wall Street, Suite 100
Midland, Texas 79701
Phone: (432) 682-4559
Fax: (432) 682-3946

CONOCOPHILLIPS

NAB1431639646
(32.000917°, -103.773324°)
EDDY COUNTY, NEW MEXICO

**STAMPEDE FEDERAL WC COM 34 #001H RELEASE
APPROXIMATE RELEASE EXTENT AND SITE ASSESSMENT**

PROJECT NO.: 212C-MD-03248

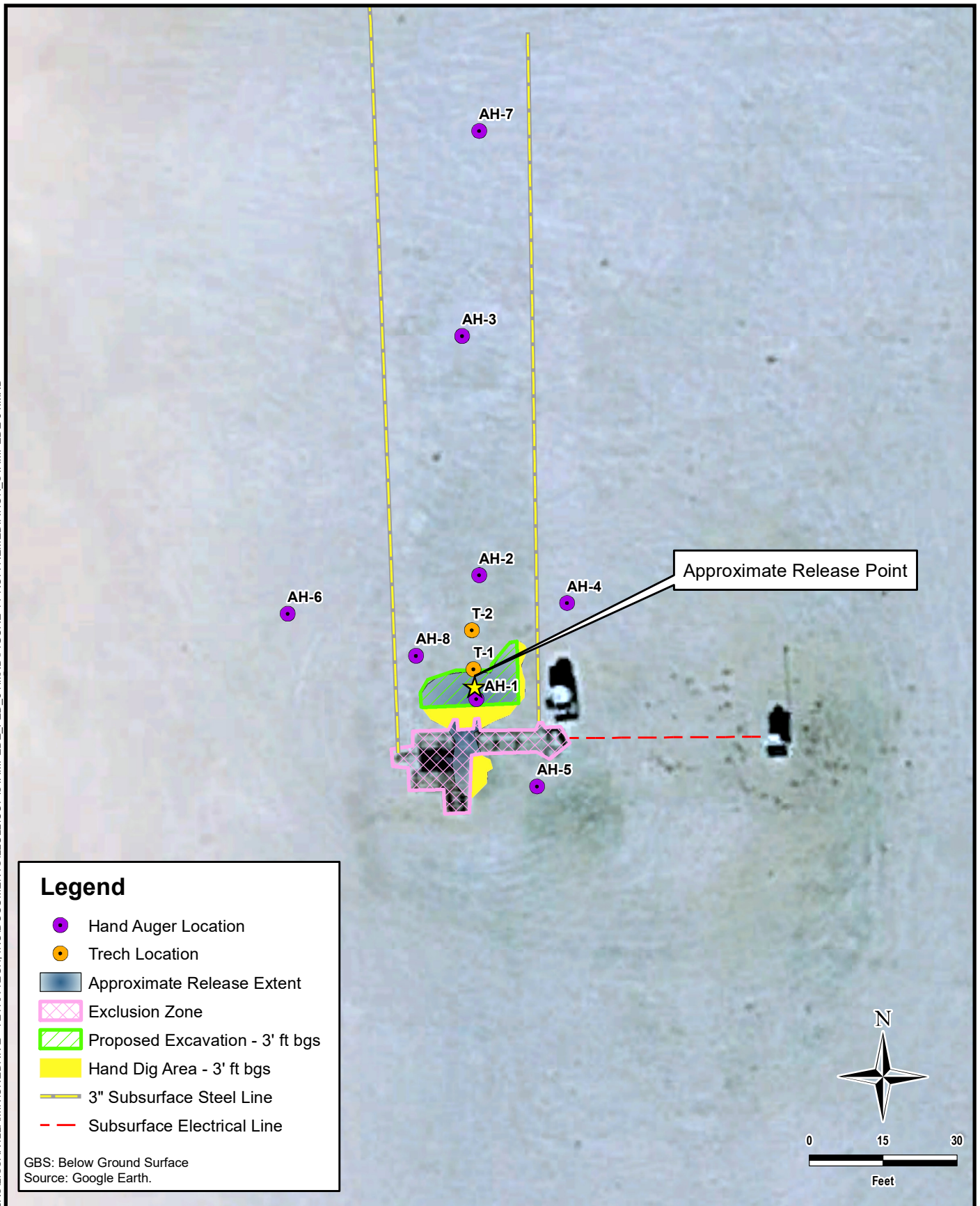
DATE: DECEMBER 19, 2023

DESIGNED BY: LMV

Figure No.

3

DOCUMENT PATH: C:\USERS\ISSA.VILLAMINIONEDRIVE - TETRA TECH\INC\DOCUMENTS\ILLU\COPI\STAMPEDE_FED_34\MXD\FIGURE 4 PROP. REMEDIATION_STAMPEDE 34.MXD



TETRA TECH

www.tetrattech.com

901 West Wall Street, Suite 100
Midland, Texas 79701
Phone: (432) 682-4559
Fax: (432) 682-3946

CONOCOPHILLIPS

NAB1431639646
(32.000917°, -103.773324°)
EDDY COUNTY, NEW MEXICO

**STAMPEDE FEDERAL WC COM 34 #001H RELEASE
PROPOSED REMEDIATION EXTENT**

PROJECT NO.: 212C-MD-03248

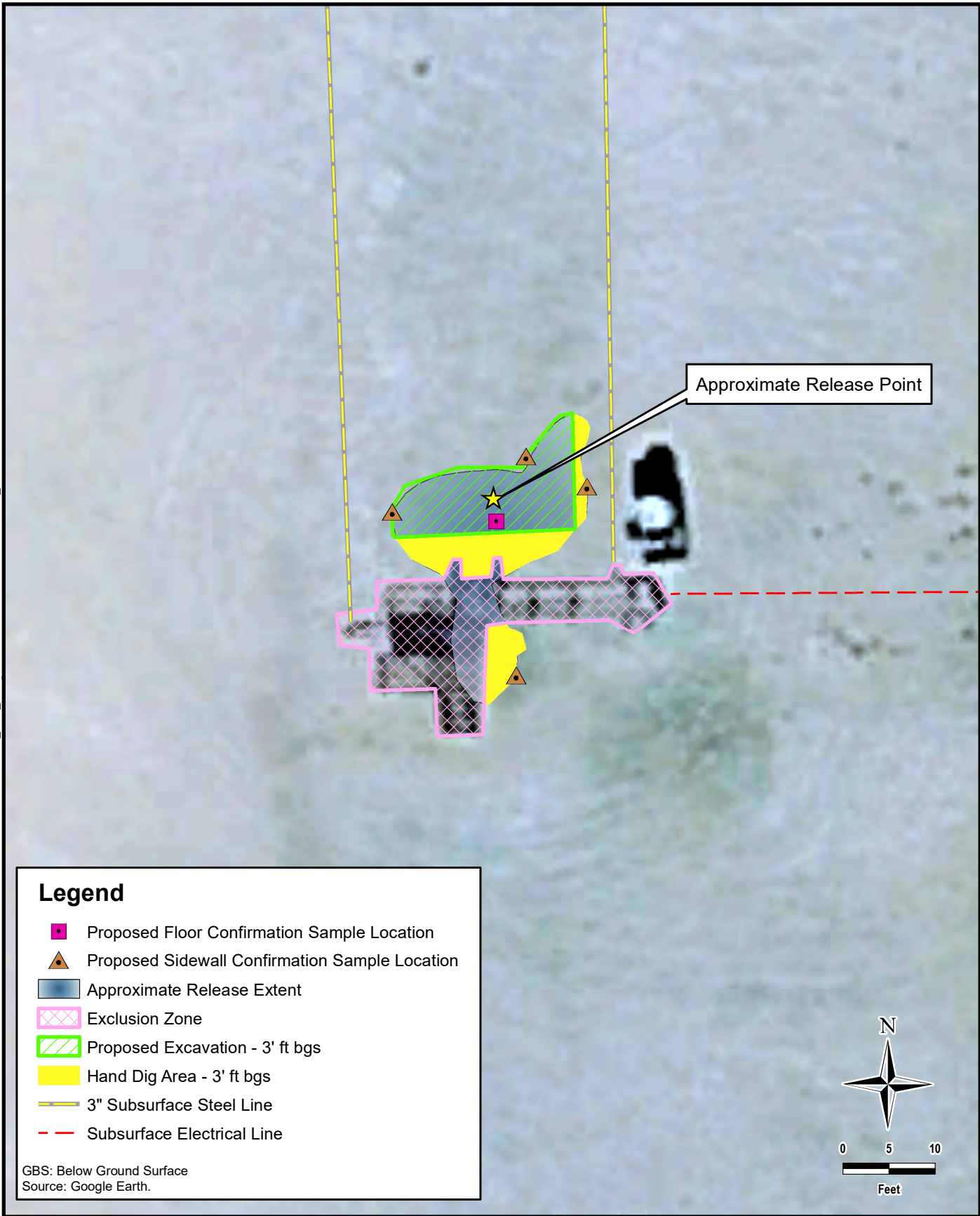
DATE: DECEMBER 19, 2023

DESIGNED BY: LMV

Figure No.

4

DOCUMENT PATH: C:\USERS\LISSA.VILLAMINION\DRIVE - TETRA TECH\INC\DOCUMENTS\ILLU\COPI\STAMPEDE_FED_34\MXD\FIGURE 5 ALT. CONFIRMATION_STAMPEDE 34.MXD



TETRA TECH

www.tetratech.com

901 West Wall Street, Suite 100
Midland, Texas 79701
Phone: (432) 682-4559
Fax: (432) 682-3946

CONOCOPHILLIPS

NAB1431639646
(32.000917°, -103.773324°)
EDDY COUNTY, NEW MEXICO

**STAMPEDE FEDERAL WC COM 34 #001H RELEASE
ALTERNATIVE CONFIRMATION SAMPLING PLAN**

PROJECT NO.: 212C-MD-03248

DATE: DECEMBER 19, 2023

DESIGNED BY: LMV

Figure No.

5

TABLES

TABLE 1
SUMMARY OF ANALYTICAL RESULTS
SOIL ASSESSMENT- NAB1431639646
CONOCOPHILLIPS
STAMPEDE FEDERAL WC COM 34 #001H
EDDY COUNTY, NM

19.15.29.12 NMAC Closure Criteria for Soils Impacted by a Release (< 50ft):				Chlorides ¹		BTEX ²										TPH ³									
				< 600 mg/kg		< 10 mg/kg		Toluene		Ethylbenzene		Total Xylenes		< 50mg/kg		GRO		DRO		EXT DRO		< 100 mg/kg		-	
Sample ID	Sample Date	Sample Depth Interval	Field Screening Chlorides	Chloride		Benzene																Total BTEX		Total TPH (GRO+DRO+EXT DRO)	
				mg/kg	Q	mg/kg	Q	mg/kg	Q	mg/kg	Q	mg/kg	Q	mg/kg	Q	mg/kg	Q	mg/kg	Q	mg/kg	Q	mg/kg	Q	mg/kg	Q
AH-1	10/27/2023	0-1	-	960		<0.050		<0.050		<0.050		<0.150		<0.300		<10.0		<10.0		<10.0		-		-	
		1-1.5	-	608		<0.050		<0.050		<0.050		<0.150		<0.300		<10.0		<10.0		<10.0		-		-	
		1.5-2	-	688		<0.050		<0.050		<0.050		<0.150		<0.300		<10.0		<10.0		<10.0		-		-	
AH-2	10/27/2023	0-1	-	192		<0.050		<0.050		<0.050		<0.150		<0.300		<10.0		<10.0		<10.0		-		-	
		1-1.5	-	112		<0.050		<0.050		<0.050		<0.150		<0.300		<10.0		<10.0		<10.0		-		-	
		1.5-2	-	112		<0.050		<0.050		<0.050		<0.150		<0.300		<10.0		<10.0		<10.0		-		-	
AH-3	10/27/2023	0-1	-	176		<0.050		<0.050		<0.050		<0.150		<0.300		<10.0		<10.0		<10.0		-		-	
AH-4	10/27/2023	0-1	-	80		<0.050		<0.050		<0.050		<0.150		<0.300		<10.0		<10.0		<10.0		-		-	
AH-5	10/27/2023	0-1	-	48		<0.050		<0.050		<0.050		<0.150		<0.300		<10.0		<10.0		<10.0		-		-	
AH-6	10/27/2023	0-1	-	64		<0.050		<0.050		<0.050		<0.150		<0.300		<10.0		<10.0		<10.0		-		-	
AH-7	10/27/2023	0-1	-	64		<0.050		<0.050		<0.050		<0.150		<0.300		<10.0		<10.0		<10.0		-		-	
AH-8	12/11/2023	0-1	694	48		<0.050		<0.050		<0.050		<0.150		<0.300		<10.0		<10.0		<10.0		-		-	
T-1	12/11/2023	0-1	700	592		<0.050		<0.050		<0.050		<0.150		<0.300		<10.0		<10.0		<10.0		-		-	
		2-3	450	304		<0.050		<0.050		<0.050		<0.150		<0.300		<10.0		<10.0		<10.0		-		-	
T-2	12/11/2023	0-1	200	48		<0.050		<0.050		<0.050		<0.150		<0.300		<10.0		<10.0		<10.0		-		-	
		2-3	175	80		<0.050		<0.050		<0.050		<0.150		<0.300		<10.0		<10.0		<10.0		-		-	

NOTES:

ft. Feet

bgs Below ground surface

mg/kg Milligrams per kilogram

TPH Total Petroleum Hydrocarbons

GRO Gasoline range organics

DRO Diesel range organics

1 Method SM4500Cl-B

2 Method 8021B

3 Method 8015M

Bold and italicized values indicate exceedance of proposed RRALs and Reclamation Requirements.

Shaded rows indicate intervals proposed for excavation.

APPENDIX A C-141 Forms

District I
1625 N. French Dr., Hobbs, NM 88240
District II
811 S. First St., Artesia, NM 88210
District III
1000 Rio Brazos Road, Aztec, NM 87410
District IV
1220 S. St. Francis Dr., Santa Fe, NM 87505

State of New Mexico
Energy Minerals and Natural Resources
Oil Conservation Division
1220 South St. Francis Dr.
Santa Fe, NM 87505

NM OIL CONSERVATION

ARTESIA DISTRICT

Form C-141
Revised August 8, 2011

NOV 06 2014

Submit 1 Copy to appropriate District Office in
accordance with 19.15.29 NMAC.

RECEIVED

Release Notification and Corrective Action

NAB1431639646 OPERATOR ☒ Initial Report ☐ Final Report

Name of Company	ConocoPhillips <i>317817</i>	Contact	Weldon Ellis (HSE Coordinator)
Address	3300 North A Street, Midland, Texas 79705	Telephone No.	432-688-6862
Facility Name	Stampede Federal WC COM 34-1H	Facility Type	Appraisal Well
Surface Owner	Mineral Owner	API No. 3001542123	

LOCATION OF RELEASE

Unit Letter	Section	Township	Range	Feet from the	North/South Line	Feet from the	East/West Line	County
4	34	26 S	31 E	250	FSL	380	FWL(SWSW)	EDDY
D	27	26 S	31 E	330	FNL	380	FWL(NWNW)	EDDY

Latitude 32° 0'2.7" N Longitude 103° 46'22.282" W

NATURE OF RELEASE

Type of Release	Slick water	Volume of Release	20 Bbls	Volume Recovered	19 Bbls
Source of Release	Burst 4" discharge hose	Date and Hour of Occurrence	11-3-2014 @5:40pm	Date and Hour of Discovery	11-3-2014 @5:40pm
Was Immediate Notice Given?	<input type="checkbox"/> Yes <input checked="" type="checkbox"/> No <input type="checkbox"/> Not Required	If YES, To Whom? Called BLM - Left message			
By Whom?	Alan Cain (HSE Coordinator)	Date and Hour	11-5-2014 @10:00am		
Was a Watercourse Reached?	<input type="checkbox"/> Yes <input checked="" type="checkbox"/> No	If YES, Volume Impacting the Watercourse. N/A			

If a Watercourse was Impacted, Describe Fully.*

N/A

Describe Cause of Problem and Remedial Action Taken.*

While pumping a slick water stage (fresh water with friction reducing agent) the #1 pony rod clamp failed causing damage to the suction valve on the #1 frac pump allowing discharge pressure to reach the suction manifold and causing the 4" discharge hose to burst. The pump stage was immediately stopped and the failed pump and hose were isolated. Approximately 20 Bbls of "slick water" was released onto location. A vacuum truck on standby began picking up the spilled fluid immediately. Approximately 19 BBLs of "slick water" was recovered.

Describe Area Affected and Cleanup Action Taken.*

The remaining spilled fluid was covered with absorbent pads and removed prior to high wind and heavy rain covering the area.

I hereby certify that the information given above is true and complete to the best of my knowledge and understand that pursuant to NMOCD rules and regulations all operators are required to report and/or file certain release notifications and perform corrective actions for releases which may endanger public health or the environment. The acceptance of a C-141 report by the NMOCD marked as "Final Report" does not relieve the operator of liability should their operations have failed to adequately investigate and remediate contamination that pose a threat to ground water, surface water, human health or the environment. In addition, NMOCD acceptance of a C-141 report does not relieve the operator of responsibility for compliance with any other federal, state, or local laws and/or regulations.

Signature: <i>Weldon Ellis</i>		OIL CONSERVATION DIVISION	
Printed Name: Weldon Ellis		Approved by Environmental Specialist: <i>[Signature]</i>	
Title: HSE Coordinator		Approval Date: <i>11/10/14</i>	Expiration Date: <i>NA</i>
E-mail Address: Weldon.ellis@contractor.cop.com		Conditions of Approval:	
Date: 11-6-2014 Phone: 432-688-6862		Remediation per O.C.D. Rules & Guidelines SUBMIT REMEDIATION PROPOSAL NO	
* Attach Additional Sheets If Necessary		Attached <input type="checkbox"/>	

LATER THAN: 12/10/14

2RP.2592

Patterson, Heather, EMNRD

From: Hughes, Solomon <shughes@blm.gov>
Sent: Thursday, November 06, 2014 10:46 AM
To: weldon.ellis@contractor.cop.com
Cc: Patterson, Heather, EMNRD
Subject: Spill at Stampede Fed 34-01H
Attachments: Blank C-141.doc

Mr. Ellis,

The form we need for the 20-bbl slickwater fracturing fluid spill at the below-referenced location is attached. Please, make sure this form also gets to Heather Patterson of NMOCD; she is copied on this email.

Stampede Fed 34-01H
Lease: LC-068282A
API: 30-015-42123
SW/SW, Sec. 34, 26S-31E

Bests,
Sol

Sol Hughes

Environmental Protection Division
Bureau of Land Management
620 E. Greene St
Carlsbad, NM

Office: 575.234.5951
Cell: 575.499.3378

Incident ID	
District RP	
Facility ID	
Application ID	

Site Assessment/Characterization

This information must be provided to the appropriate district office no later than 90 days after the release discovery date.

What is the shallowest depth to groundwater beneath the area affected by the release?	_____ (ft bgs)
Did this release impact groundwater or surface water?	<input type="checkbox"/> Yes <input type="checkbox"/> No
Are the lateral extents of the release within 300 feet of a continuously flowing watercourse or any other significant watercourse?	<input type="checkbox"/> Yes <input type="checkbox"/> No
Are the lateral extents of the release within 200 feet of any lakebed, sinkhole, or playa lake (measured from the ordinary high-water mark)?	<input type="checkbox"/> Yes <input type="checkbox"/> No
Are the lateral extents of the release within 300 feet of an occupied permanent residence, school, hospital, institution, or church?	<input type="checkbox"/> Yes <input type="checkbox"/> No
Are the lateral extents of the release within 500 horizontal feet of a spring or a private domestic fresh water well used by less than five households for domestic or stock watering purposes?	<input type="checkbox"/> Yes <input type="checkbox"/> No
Are the lateral extents of the release within 1000 feet of any other fresh water well or spring?	<input type="checkbox"/> Yes <input type="checkbox"/> No
Are the lateral extents of the release within incorporated municipal boundaries or within a defined municipal fresh water well field?	<input type="checkbox"/> Yes <input type="checkbox"/> No
Are the lateral extents of the release within 300 feet of a wetland?	<input type="checkbox"/> Yes <input type="checkbox"/> No
Are the lateral extents of the release overlying a subsurface mine?	<input type="checkbox"/> Yes <input type="checkbox"/> No
Are the lateral extents of the release overlying an unstable area such as karst geology?	<input type="checkbox"/> Yes <input type="checkbox"/> No
Are the lateral extents of the release within a 100-year floodplain?	<input type="checkbox"/> Yes <input type="checkbox"/> No
Did the release impact areas not on an exploration, development, production, or storage site?	<input type="checkbox"/> Yes <input type="checkbox"/> No

Attach a comprehensive report (electronic submittals in .pdf format are preferred) demonstrating the lateral and vertical extents of soil contamination associated with the release have been determined. Refer to 19.15.29.11 NMAC for specifics.

Characterization Report Checklist: *Each of the following items must be included in the report.*

- ☐ Scaled site map showing impacted area, surface features, subsurface features, delineation points, and monitoring wells.
- ☐ Field data
- ☐ Data table of soil contaminant concentration data
- ☐ Depth to water determination
- ☐ Determination of water sources and significant watercourses within ½-mile of the lateral extents of the release
- ☐ Boring or excavation logs
- ☐ Photographs including date and GIS information
- ☐ Topographic/Aerial maps
- ☐ Laboratory data including chain of custody

If the site characterization report does not include completed efforts at remediation of the release, the report must include a proposed remediation plan. That plan must include the estimated volume of material to be remediated, the proposed remediation technique, proposed sampling plan and methods, anticipated timelines for beginning and completing the remediation. The closure criteria for a release are contained in Table 1 of 19.15.29.12 NMAC, however, use of the table is modified by site- and release-specific parameters.

State of New Mexico
Oil Conservation Division

Incident ID	
District RP	
Facility ID	
Application ID	

I hereby certify that the information given above is true and complete to the best of my knowledge and understand that pursuant to OCD rules and regulations all operators are required to report and/or file certain release notifications and perform corrective actions for releases which may endanger public health or the environment. The acceptance of a C-141 report by the OCD does not relieve the operator of liability should their operations have failed to adequately investigate and remediate contamination that pose a threat to groundwater, surface water, human health or the environment. In addition, OCD acceptance of a C-141 report does not relieve the operator of responsibility for compliance with any other federal, state, or local laws and/or regulations.

Printed Name: _____ Title: _____

Signature: Moises H Cantu Garcia

Date: _____

email: _____

Telephone: _____

OCD Only

Received by: _____

Date: _____

Incident ID	
District RP	
Facility ID	
Application ID	

Remediation Plan

Remediation Plan Checklist: *Each of the following items must be included in the plan.*

- ☐ Detailed description of proposed remediation technique
- ☐ Scaled sitemap with GPS coordinates showing delineation points
- ☐ Estimated volume of material to be remediated
- ☐ Closure criteria is to Table 1 specifications subject to 19.15.29.12(C)(4) NMAC
- ☐ Proposed schedule for remediation (note if remediation plan timeline is more than 90 days OCD approval is required)

Deferral Requests Only: *Each of the following items must be confirmed as part of any request for deferral of remediation.*

- ☐ Contamination must be in areas immediately under or around production equipment where remediation could cause a major facility deconstruction.
- ☐ Extents of contamination must be fully delineated.
- ☐ Contamination does not cause an imminent risk to human health, the environment, or groundwater.

I hereby certify that the information given above is true and complete to the best of my knowledge and understand that pursuant to OCD rules and regulations all operators are required to report and/or file certain release notifications and perform corrective actions for releases which may endanger public health or the environment. The acceptance of a C-141 report by the OCD does not relieve the operator of liability should their operations have failed to adequately investigate and remediate contamination that pose a threat to groundwater, surface water, human health or the environment. In addition, OCD acceptance of a C-141 report does not relieve the operator of responsibility for compliance with any other federal, state, or local laws and/or regulations.

Printed Name: _____ Title: _____
Moises H Cantu Garcia
Signature: _____ Date: _____
email: _____ Telephone: _____

OCD Only

Received by: _____ Date: _____

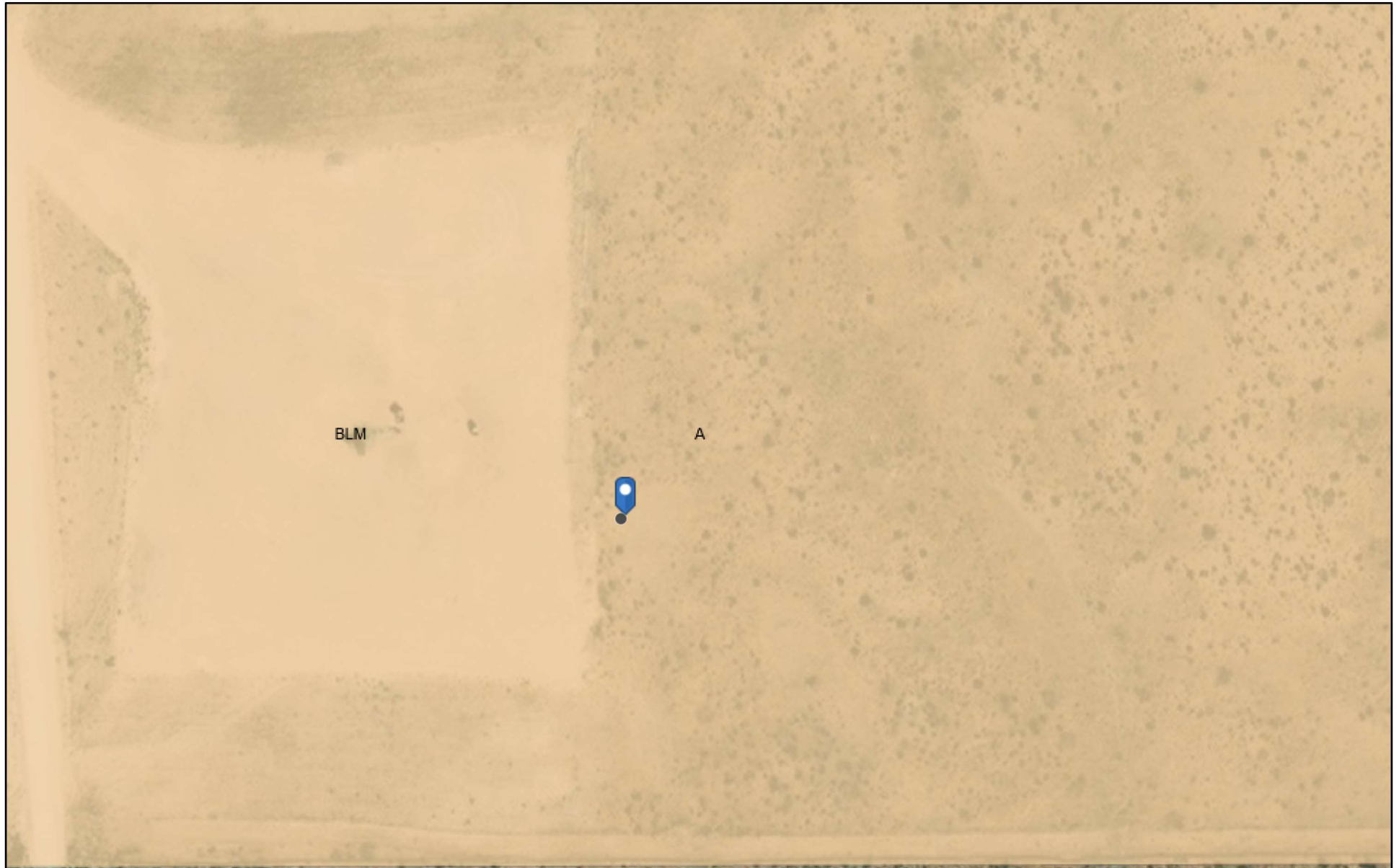
☐ Approved ☐ Approved with Attached Conditions of Approval ☐ Denied ☐ Deferral Approved

Signature: _____ Date: _____

APPENDIX B

Site Characterization Data

OCD Land Ownership



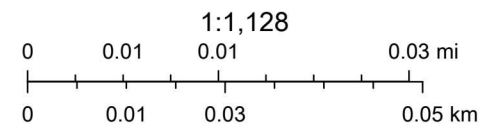
10/12/2023, 12:27:54 PM

Mineral Ownership

A-All minerals are owned by U.S.

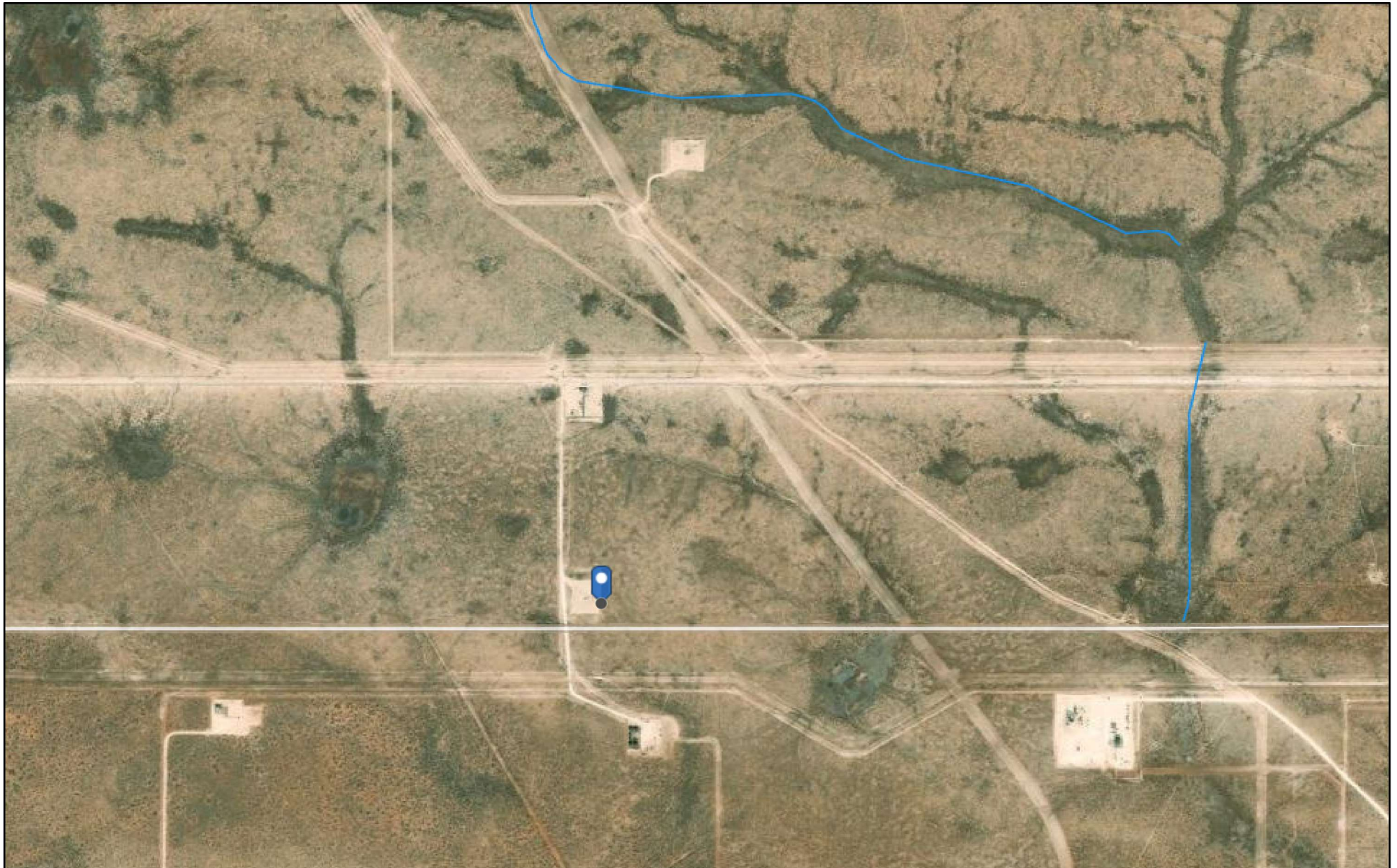
Land Ownership

BLM



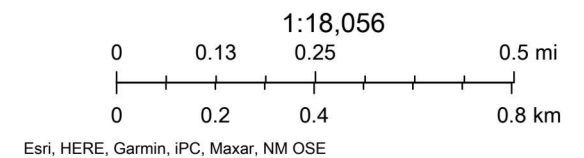
U.S. BLM, Maxar, Microsoft, Esri, HERE, Garmin, iPC

OCD waterbodies



10/12/2023, 12:30:29 PM

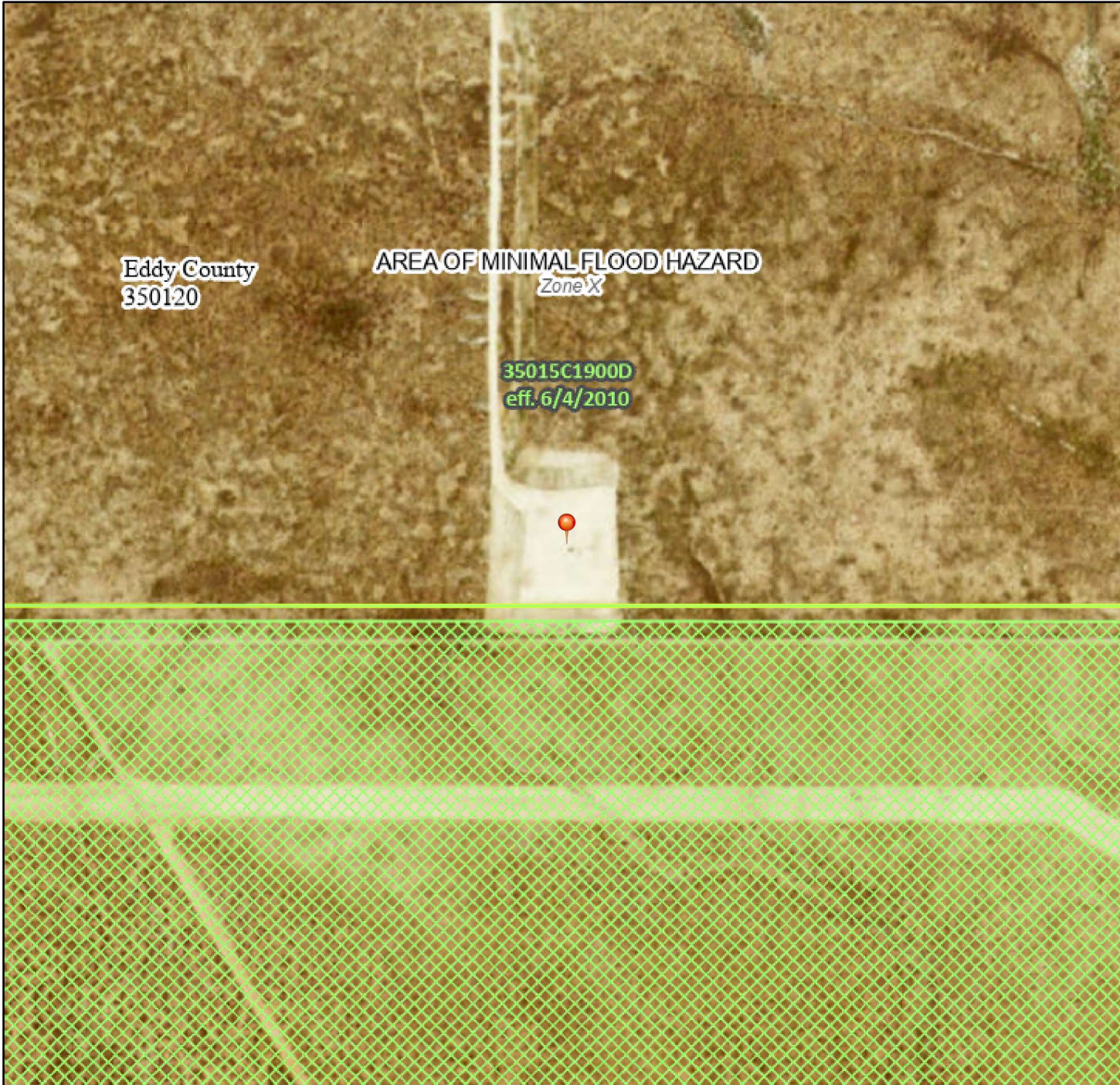
— OSE Streams



National Flood Hazard Layer FIRMette



103°46'43"W 32°0'19"N



Released to Imaging: 1/23/2024 12:36 PM

1:6,000

103°46'5"W 31°59'48"N

Basemap Imagery Source: USGS National Map 2023

Legend

SEE FIS REPORT FOR DETAILED LEGEND AND INDEX MAP FOR FIRM PANEL LAYOUT

SPECIAL FLOOD HAZARD AREAS		Without Base Flood Elevation (BFE) Zone A, V, A99
		With BFE or Depth Zone AE, AO, AH, VE, AR
		Regulatory Floodway
OTHER AREAS OF FLOOD HAZARD		0.2% Annual Chance Flood Hazard, Areas of 1% annual chance flood with average depth less than one foot or with drainage areas of less than one square mile Zone X
		Future Conditions 1% Annual Chance Flood Hazard Zone X
		Area with Reduced Flood Risk due to Levee. See Notes. Zone X
		Area with Flood Risk due to Levee Zone D
OTHER AREAS		NO SCREEN Area of Minimal Flood Hazard Zone X
		Effective LOMRs
		Area of Undetermined Flood Hazard Zone D
GENERAL STRUCTURES		Channel, Culvert, or Storm Sewer
		Levee, Dike, or Floodwall
OTHER FEATURES		20.2 Cross Sections with 1% Annual Chance Water Surface Elevation
		17.5 Coastal Transect
		Base Flood Elevation Line (BFE)
		Limit of Study
		Jurisdiction Boundary
		Coastal Transect Baseline
		Profile Baseline
MAP PANELS		Digital Data Available
		No Digital Data Available
		Unmapped



The pin displayed on the map is an approximate point selected by the user and does not represent an authoritative property location.

This map complies with FEMA's standards for the use of digital flood maps if it is not void as described below. The basemap shown complies with FEMA's basemap accuracy standards

The flood hazard information is derived directly from the authoritative NFHL web services provided by FEMA. This map was exported on 10/11/2023 at 12:49 PM and does not reflect changes or amendments subsequent to this date and time. The NFHL and effective information may change or become superseded by new data over time.

This map image is void if the one or more of the following map elements do not appear: basemap imagery, flood zone labels, legend, scale bar, map creation date, community identifiers, FIRM panel number, and FIRM effective date. Map images for unmapped and unmodernized areas cannot be used for regulatory purposes.

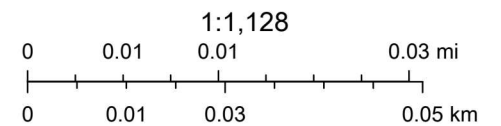
OCD Karst Areas



10/11/2023, 12:03:33 PM

Karst Occurrence Potential

Medium



BLM, OCD, New Mexico Tech, Maxar, Microsoft, Esri, HERE, Garmin, iPC



New Mexico Office of the State Engineer

Water Column/Average Depth to Water

(A CLW##### in the POD suffix indicates the POD has been replaced & no longer serves a water right file.)

(R=POD has been replaced, O=orphaned, C=the file is closed)

(quarters are 1=NW 2=NE 3=SW 4=SE)

(quarters are smallest to largest)

(NAD83 UTM in meters)

(In feet)

POD Number	POD Sub-Code	basin	County	Q 64	Q 16	Q 4	Sec	Tws	Rng	X	Y	Distance	Depth Well	Depth Water	Water Column
C 04769 POD1	CUB	ED		2	1	2	21	26S	31E	615225	3544832	3694	101		
C 02274	CUB	LE		2	1	2	31	26S	32E	621742	3541730*	5897	300	295	5

Average Depth to Water: **295 feet**

Minimum Depth: **295 feet**

Maximum Depth: **295 feet**

Record Count: 2

UTMNAD83 Radius Search (in meters):

Easting (X): 615868.88

Northing (Y): 3541194.67

Radius: 6000

*UTM location was derived from PLSS - see Help

The data is furnished by the NMOSE/ISC and is accepted by the recipient with the expressed understanding that the OSE/ISC make no warranties, expressed or implied, concerning the accuracy, completeness, reliability, usability, or suitability for any particular purpose of the data.

11/10/23 11:32 AM

Page 1 of 1

WATER COLUMN/ AVERAGE
DEPTH TO WATER



New Mexico Office of the State Engineer

Point of Diversion Summary

(quarters are 1=NW 2=NE 3=SW 4=SE)
 (quarters are smallest to largest) (NAD83 UTM in meters)

Well Tag	POD Number	Q64	Q16	Q4	Sec	Tws	Rng	X	Y
NA	C 04769 POD1	2	1	2	21	26S	31E	615225	3544832

x

Driller License: 1249 **Driller Company:** ATKINS ENGINEERING ASSOC. INC.
Driller Name: JACKIE D ATKINS

Drill Start Date: 09/08/2023	Drill Finish Date: 09/08/2023	Plug Date: 09/12/2023
Log File Date: 09/14/2023	PCW Rcv Date:	Source:
Pump Type:	Pipe Discharge Size:	Estimated Yield:
Casing Size:	Depth Well: 101 feet	Depth Water:

x

The data is furnished by the NMOSE/ISC and is accepted by the recipient with the expressed understanding that the OSE/ISC make no warranties, expressed or implied, concerning the accuracy, completeness, reliability, usability, or suitability for any particular purpose of the data.

10/12/23 11:23 AM

POINT OF DIVERSION SUMMARY

APPENDIX C

Regulatory Correspondence

Chavira, Lisbeth

From: Hall, Brittany, EMNRD <Brittany.Hall@emnrd.nm.gov>
Sent: Monday, September 25, 2023 8:23 AM
To: Abbott, Sam; Enviro, OCD, EMNRD
Cc: Llull, Christian; Chavira, Lisbeth; Maxwell, Ashley, EMNRD; Llull, Christian; Chavira, Lisbeth; Smith, Cory, EMNRD; Bratcher, Michael, EMNRD
Subject: RE: [EXTERNAL] Extension Request - Application ID 207618 (NAB1431639646)

⚠ CAUTION: This email originated from an external sender. Verify the source before opening links or attachments. **⚠**

Sam,
The extension request for NAB1431639646 is approved. The new due date is December 1, 2023.

If an approved workplan is found, it will need to have an email, stamps, etc. from the OCD that shows it was received and approved by the OCD prior to the rule change and will need to be submitted to the OCD ASAP. If the approved workplans are already uploaded into the files available on the OCD Permitting website the workplan will not need to be resubmitted.

Please let me know if you have any questions or require any additional information.

Thank you,
Brittany Hall • Environmental Specialist
Environmental Bureau Projects Group
EMNRD - Oil Conservation Division
1000 Rio Brazos Road | Aztec, NM 87110
505.517.5333 | Brittany.Hall@emnrd.nm.gov
<http://www.emnrd.nm.gov/ocd/>

From: Abbott, Sam <Sam.Abbott@tetrattech.com>
Sent: Friday, September 22, 2023 3:17 PM
To: Hall, Brittany, EMNRD <Brittany.Hall@emnrd.nm.gov>; Enviro, OCD, EMNRD <OCD.Enviro@emnrd.nm.gov>
Cc: Llull, Christian <Christian.Llull@tetrattech.com>; Chavira, Lisbeth <LISBETH.CHAVIRA@tetrattech.com>; Maxwell, Ashley, EMNRD <Ashley.Maxwell@emnrd.nm.gov>; Llull, Christian <Christian.Llull@tetrattech.com>; Chavira, Lisbeth <LISBETH.CHAVIRA@tetrattech.com>; Smith, Cory, EMNRD <cory.smith@emnrd.nm.gov>; Bratcher, Michael, EMNRD <mike.bratcher@emnrd.nm.gov>
Subject: [EXTERNAL] Extension Request - Application ID 207618 (NAB1431639646)

CAUTION: This email originated outside of our organization. Exercise caution prior to clicking on links or opening attachments.

Ms. Hall,

On behalf of ConocoPhillips, Tetra Tech is requesting an extension to December 1, 2023 to complete any necessary additional assessment activities and associated reporting for the Stampede Federal WC Com 34 No.001H Release site (NAB1431639646).

A Closure Letter Report dated October 15, 2020 was rejected by the OCD on 4/18/2023 with the following comments: "Closure for this incident is not approved. The OCD requires that this release be Remediated according to 19.15.29.12 NMAC and 19.15.29 13 NMAC as they apply to this release and resubmit a closure report by 07/17/2023."

The OCD, ConocoPhillips, and Tetra Tech had a meeting on September 20, 2023 to discuss the OCD rejections of a select number of submitted closure reports associated with the Agreed Compliance Order (ACO) for open release incidents between ConocoPhillips and OCD. In this meeting, ConocoPhillips and Tetra Tech received clarification from the OCD on the closure requirements for the historical releases. Based on this meeting, ConocoPhillips will assess each remaining open release incident associated with the ACO to determine if there is an approved remediation work plan associated with the incident. If so, ConocoPhillips will proceed to perform the approved scope of work contained in the work plan. If there is not an approved work plan associated with the release incident, then ConocoPhillips will proceed with any necessary assessment and/or remediation activities in compliance with 19.15.29 NMAC.

ConocoPhillips is committed to addressing this open release incident in compliance with OCD regulations. Additional time is required to review incident records, perform additional assessment sampling if necessary, and prepare a revised report for OCD review. A complete report will be submitted to the OCD within the requested timeframe.

Thank you,
Sam

Samantha Abbott, PG | Project Manager

Direct Mobile +1 (512) 739-7874 | Business +1 (512) 338-1667 | Sam.Abbott@tetrattech.com

Tetra Tech, Inc. | *Leading with Science®* | OGA

8911 N Capital of Texas Hwy #2310 | Austin, TX 78759 | tetrattech.com

This message, including any attachments, may include privileged, confidential and/or inside information. Any distribution or use of this communication by anyone other than the intended recipient is strictly prohibited and may be unlawful. If you are not the intended recipient, please notify the sender by replying to this message and then delete it from your system.



Please consider the environment before printing. [Read more](#)



TETRA TECH

From: [Hall, Brittany, EMNRD](#)
To: [Chavira, Lisbeth](#)
Cc: [Llull, Christian](#); [Abbott, Sam](#)
Subject: RE: [EXTERNAL] Extension Request - Application ID 207618 (NAB1431639646)
Date: Monday, December 4, 2023 10:21:15 AM
Attachments: [image001.png](#)
[image002.png](#)
[image003.png](#)
[image004.png](#)
[image005.png](#)

CAUTION: This email originated from an external sender. Verify the source before opening links or attachments.

Lisbeth,

The extension request for **NAB1431639646** is approved. The new due date is January 30, 2024.

Please include a copy of this and all notifications in the remedial and/or closure reports to ensure the notifications are documented in the project file.

Thank you,

Brittany Hall • Environmental Specialist
Environmental Bureau Projects Group
EMNRD - Oil Conservation Division
1000 Rio Brazos Road | Aztec, NM 87110
505.517.5333 | Brittany.Hall@emnrd.nm.gov
<http://www.emnrd.nm.gov/ocd/>

From: Chavira, Lisbeth <LISBETH.CHAVIRA@tetrattech.com>
Sent: Friday, December 1, 2023 3:14 PM
To: Hall, Brittany, EMNRD <Brittany.Hall@emnrd.nm.gov>
Cc: Llull, Christian <Christian.Llull@tetrattech.com>; Abbott, Sam <Sam.Abbott@tetrattech.com>
Subject: [EXTERNAL] Extension Request - Application ID 207618 (NAB1431639646)

CAUTION: This email originated outside of our organization. Exercise caution prior to clicking on links or opening attachments.

Ms. Hall:

On behalf of ConocoPhillips, Tetra Tech is requesting an additional 60-day extension (until January 30, 2024) to complete additional assessment activities and associated reporting for the for the Stampede Federal WC Com 34 No.001H Release site (**NAB1431639646**). A previous extension request was approved on September 22, 2023 for December 1, 2023.

A Closure Letter Report dated October 15, 2020, was rejected by the OCD on 4/18/2023 with the following comments:

"Closure for this incident is not approved. The OCD requires that this release be Remediated according to 19.15.29.12 NMAC and 19.15.29 13 NMAC as they apply to this release and resubmit a closure report by 07/17/2023."

The OCD, ConocoPhillips, and Tetra Tech had a meeting on September 20, 2023, to discuss the OCD rejections of a select number of submitted closure reports associated with the Agreed Compliance Order (ACO) for open release incidents between ConocoPhillips and OCD. In this meeting, ConocoPhillips and Tetra Tech received clarification from the OCD on the closure requirements for

the historical releases.

Based on this meeting and a desktop review of the incident, Tetra Tech conducted assessment sampling activities at the Stampede Federal WC 34 No. 001H.

- Assessment and delineation activities were conducted on October 27, 2023.
- Tetra Tech installed seven (7) hand auger borings within and around the approximate release extent.
- 11 Samples were collected and submitted to Cardinal to be analyzed for chloride via EPA Method 300.0, TPH via EPA Method 8015M, and BTEX via EPA Method 8261B.
- The collected data is presents in Table 1 attached.
- The boring locations are provided in the attached figure.
- Horizontal delineation was achieved; however, vertical delineation was not achieved. The pad conditions led to shallow auger refusal.
- Tetra Tech will be re-mobilizing to the site to complete delineation near AH-1 (via trenching) the week of December 4th.

Therefore, additional time is required to perform additional assessment sampling and prepare a revised report for OCD review.

A complete report will be submitted to the OCD within the requested timeframe.

Thank you in advance.

Lisbeth Chavira | Staff Geoscientist

Direct Mobile +1 (512) 596-8201 | Lisbeth.chavira@tetrattech.com

Tetra Tech | *Leading with Science®* | OGA

8911 N. Capital of Texas Highway | Bldg. 2, Suite 2310 | Austin, TX 78759 | tetrattech.com

This message, including any attachments, may include privileged, confidential and/or inside information. Any distribution or use of this communication by anyone other than the intended recipient is strictly prohibited and may be unlawful. If you are not the intended recipient, please notify the sender by replying to this message and then delete it from your system.



Please consider the environment before printing. [Read more](#)

Adobe Systems



APPENDIX D

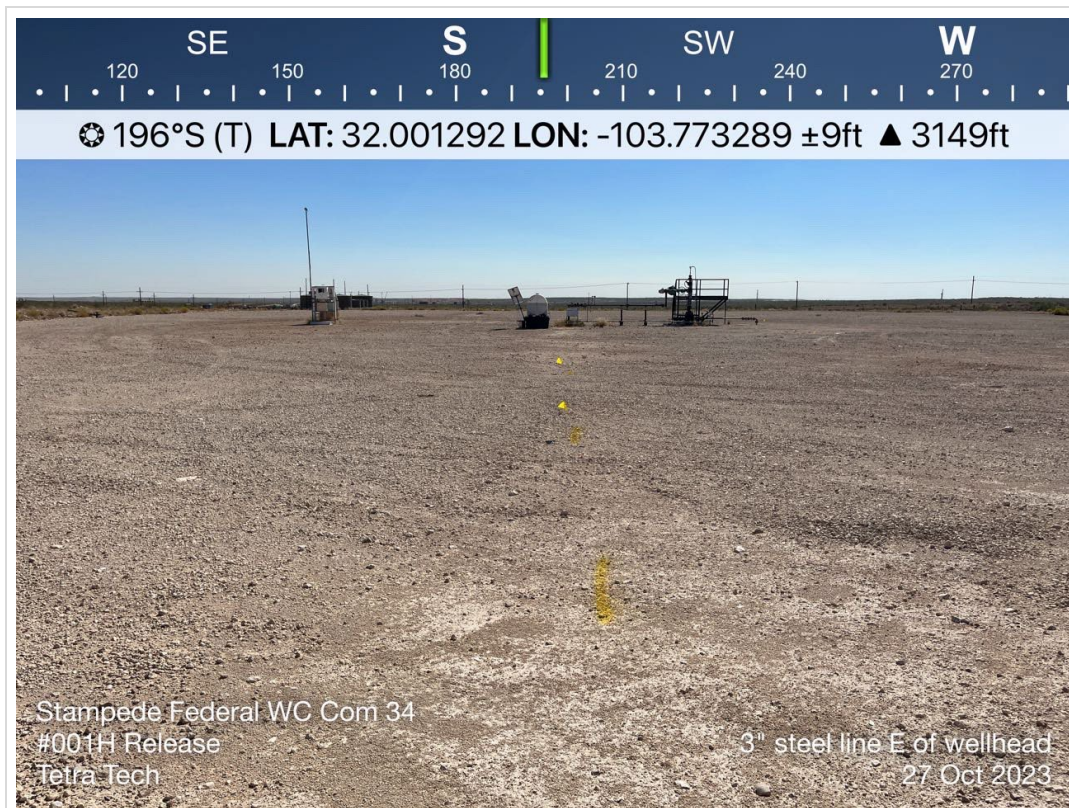
Photographic Documentation



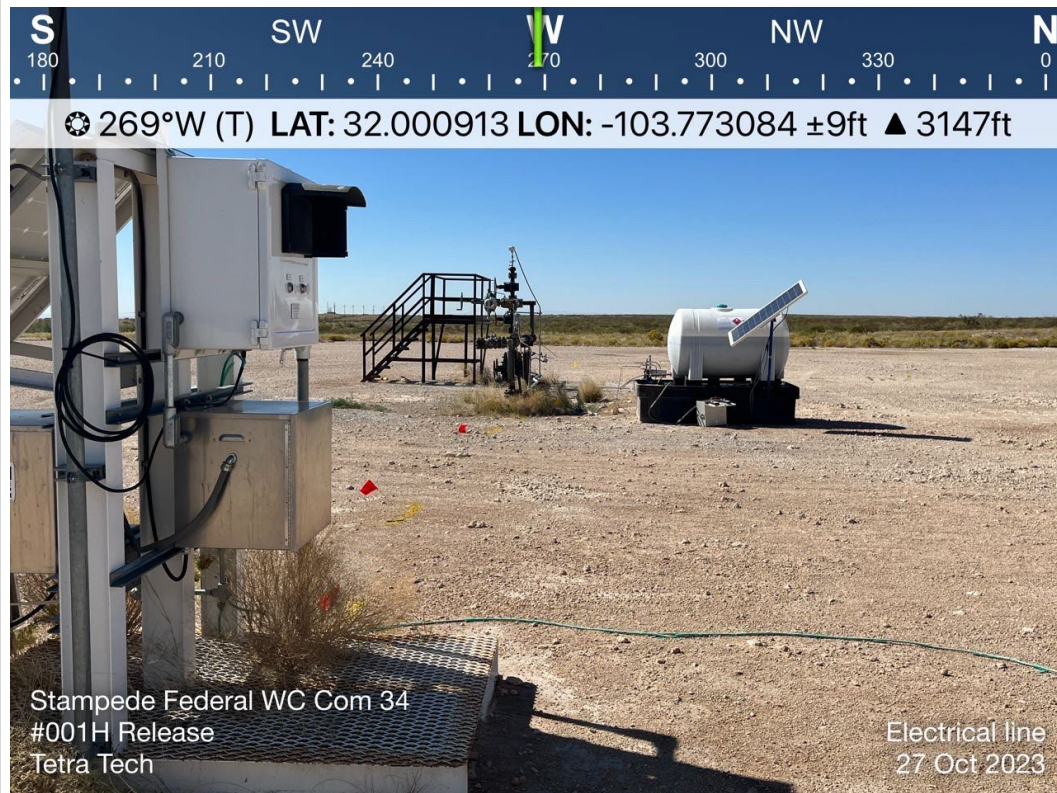
TETRA TECH, INC. PROJECT NO. 212C-MD-03248	DESCRIPTION	View south-southwest of sight signage. Stampede Federal WC Com 34-1H.	1
	SITE NAME	STAMPEDE FEDERAL WC COM #001 Release	10/27/2023



TETRA TECH, INC. PROJECT NO. 212C-MD-03248	DESCRIPTION	View north-northwest of 3" subsurface steel line. View of approximate release extent.	2
	SITE NAME	STAMPEDE FEDERAL WC COM #001 Release	10/27/2023



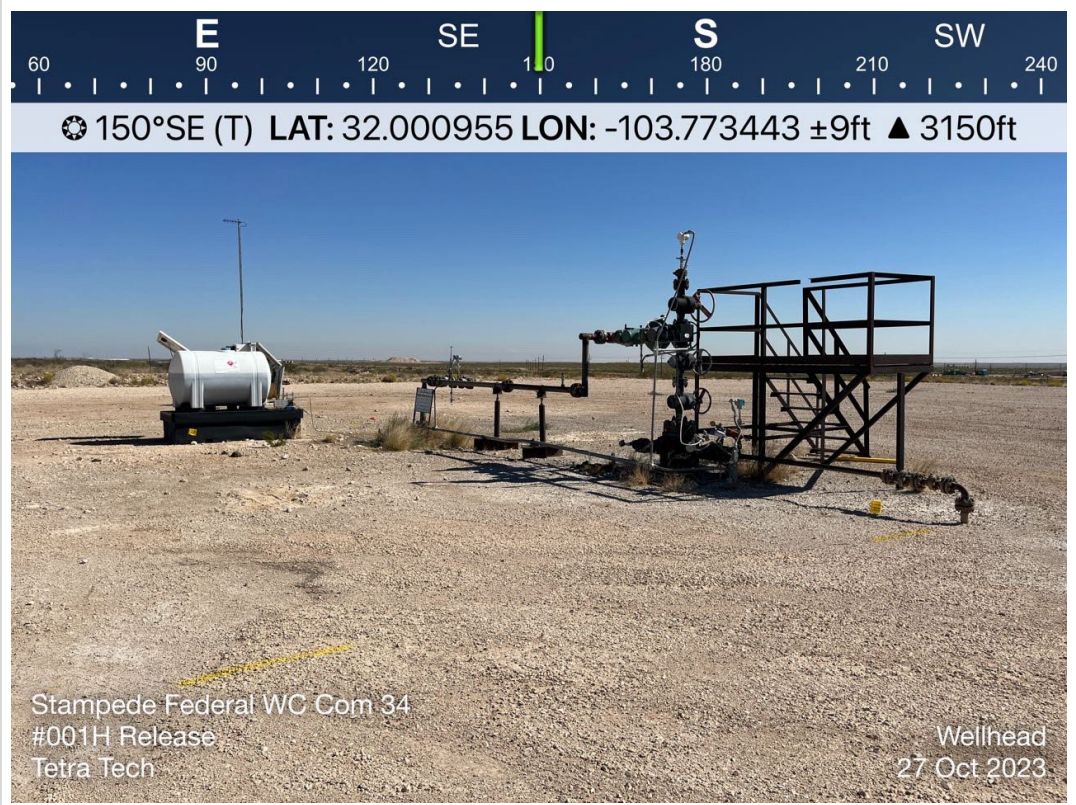
TETRA TECH, INC. PROJECT NO. 212C-MD-03248	DESCRIPTION	View south of 3" subsurface steel line east of wellhead. View of approximate release extent.	3
	SITE NAME	STAMPEDE FEDERAL WC COM #001 Release	10/27/2023



TETRA TECH, INC. PROJECT NO. 212C-MD-03248	DESCRIPTION	View west of subsurface electrical line east of well head.	4
	SITE NAME	STAMPEDE FEDERAL WC COM #001 Release	10/27/2023



TETRA TECH, INC. PROJECT NO. 212C-MD-03248	DESCRIPTION	View south-southwest of wellhead and 3" subsurface steel line. View of approximate release Point.	5
	SITE NAME	STAMPEDE FEDERAL WC COM #001 Release	10/27/2023



TETRA TECH, INC. PROJECT NO. 212C-MD-03248	DESCRIPTION	View south-southeast of wellhead and 3" subsurface steel line. View of approximate release Point.	6
	SITE NAME	STAMPEDE FEDERAL WC COM #001 Release	10/27/2023

APPENDIX E

Laboratory Analytical Data



PHONE (575) 393-2326 ° 101 E. MARLAND ° HOBBS, NM 88240

November 03, 2023

CHRISTIAN LLULL

TETRA TECH

901 WEST WALL STREET , STE 100

MIDLAND, TX 79701

RE: STAMPEDE FEDERAL WC COM 34 #001 H

Enclosed are the results of analyses for samples received by the laboratory on 10/27/23 15:45.

Cardinal Laboratories is accredited through Texas NELAP under certificate number T104704398-22-15. Accreditation applies to drinking water, non-potable water and solid and chemical materials. All accredited analytes are denoted by an asterisk (*). For a complete list of accredited analytes and matrices visit the TCEQ website at www.tceq.texas.gov/field/qa/lab_accred_certif.html.

Cardinal Laboratories is accredited through the State of Colorado Department of Public Health and Environment for:

Method EPA 552.2	Haloacetic Acids (HAA-5)
Method EPA 524.2	Total Trihalomethanes (TTHM)
Method EPA 524.4	Regulated VOCs (V1, V2, V3)

Accreditation applies to public drinking water matrices.

This report meets NELAP requirements and is made up of a cover page, analytical results, and a copy of the original chain-of-custody. If you have any questions concerning this report, please feel free to contact me.

Sincerely,

A handwritten signature in black ink that reads "Mike Snyder". The signature is fluid and cursive, with the first name "Mike" and last name "Snyder" clearly distinguishable.

Mike Snyder For Celey D. Keene

Lab Director/Quality Manager



PHONE (575) 393-2326 ° 101 E. MARLAND ° HOBBS, NM 88240

Analytical Results For:

TETRA TECH
 CHRISTIAN LLULL
 901 WEST WALL STREET , STE 100
 MIDLAND TX, 79701
 Fax To: (432) 682-3946

Received:	10/27/2023	Sampling Date:	10/27/2023
Reported:	11/03/2023	Sampling Type:	Soil
Project Name:	STAMPEDE FEDERAL WC COM 34 #001 I	Sampling Condition:	Cool & Intact
Project Number:	212C-MD-03248	Sample Received By:	Dionica Hinojos
Project Location:	EDDY CO NM		

Sample ID: AH - 1 (0-1') (H235918-01)

BTEX 8021B		mg/kg		Analyzed By: JH/						
Analyte	Result	Reporting Limit	Analyzed	Method Blank	BS	% Recovery	True Value QC	RPD	Qualifier	
Benzene*	<0.050	0.050	11/02/2023	ND	2.02	101	2.00	2.63		
Toluene*	<0.050	0.050	11/02/2023	ND	1.86	92.9	2.00	6.11		
Ethylbenzene*	<0.050	0.050	11/02/2023	ND	1.91	95.3	2.00	8.03		
Total Xylenes*	<0.150	0.150	11/02/2023	ND	5.64	94.1	6.00	9.31		
Total BTEX	<0.300	0.300	11/02/2023	ND						

Surrogate: 4-Bromofluorobenzene (PID) 102 % 71.5-134

Chloride, SM4500Cl-B		mg/kg		Analyzed By: AC						
Analyte	Result	Reporting Limit	Analyzed	Method Blank	BS	% Recovery	True Value QC	RPD	Qualifier	
Chloride	960	16.0	11/02/2023	ND	416	104	400	0.00		

TPH 8015M		mg/kg		Analyzed By: MS					
Analyte	Result	Reporting Limit	Analyzed	Method Blank	BS	% Recovery	True Value QC	RPD	Qualifier
GRO C6-C10*	<10.0	10.0	11/02/2023	ND	204	102	200	1.62	
DRO >C10-C28*	<10.0	10.0	11/02/2023	ND	209	105	200	0.212	
EXT DRO >C28-C36	<10.0	10.0	11/02/2023	ND					

Surrogate: 1-Chlorooctane 78.9 % 48.2-134

Surrogate: 1-Chlorooctadecane 88.3 % 49.1-148

Cardinal Laboratories

*=Accredited Analyte

PLEASE NOTE: Liability and Damages. Cardinal's liability and client's exclusive remedy for any claim arising, whether based in contract or tort, shall be limited to the amount paid by client for analyses. All claims, including those for negligence and any other cause whatsoever shall be deemed waived unless made in writing and received by Cardinal within thirty (30) days after completion of the applicable service. In no event shall Cardinal be liable for incidental or consequential damages, including, without limitation, business interruptions, loss of use, or loss of profits incurred by client, its subsidiaries, affiliates or successors arising out of or related to the performance of the services hereunder by Cardinal, regardless of whether such claim is based upon any of the above stated reasons or otherwise. Results relate only to the samples identified above. This report shall not be reproduced except in full with written approval of Cardinal Laboratories.

Mike Snyder For Celey D. Keene, Lab Director/Quality Manager



PHONE (575) 393-2326 ° 101 E. MARLAND ° HOBBS, NM 88240

Analytical Results For:

TETRA TECH
 CHRISTIAN LLULL
 901 WEST WALL STREET , STE 100
 MIDLAND TX, 79701
 Fax To: (432) 682-3946

Received:	10/27/2023	Sampling Date:	10/27/2023
Reported:	11/03/2023	Sampling Type:	Soil
Project Name:	STAMPEDE FEDERAL WC COM 34 #001 I	Sampling Condition:	Cool & Intact
Project Number:	212C-MD-03248	Sample Received By:	Dionica Hinojos
Project Location:	EDDY CO NM		

Sample ID: AH - 1 (1'-1.5') (H235918-02)

BTEx 8021B		mg/kg		Analyzed By: JH/					
Analyte	Result	Reporting Limit	Analyzed	Method Blank	BS	% Recovery	True Value QC	RPD	Qualifier
Benzene*	<0.050	0.050	11/02/2023	ND	2.02	101	2.00	2.63	
Toluene*	<0.050	0.050	11/02/2023	ND	1.86	92.9	2.00	6.11	
Ethylbenzene*	<0.050	0.050	11/02/2023	ND	1.91	95.3	2.00	8.03	
Total Xylenes*	<0.150	0.150	11/02/2023	ND	5.64	94.1	6.00	9.31	
Total BTEX	<0.300	0.300	11/02/2023	ND					

Surrogate: 4-Bromofluorobenzene (PID) 104 % 71.5-134

Chloride, SM4500Cl-B		mg/kg		Analyzed By: AC					
Analyte	Result	Reporting Limit	Analyzed	Method Blank	BS	% Recovery	True Value QC	RPD	Qualifier
Chloride	608	16.0	11/02/2023	ND	416	104	400	0.00	

TPH 8015M		mg/kg		Analyzed By: MS					
Analyte	Result	Reporting Limit	Analyzed	Method Blank	BS	% Recovery	True Value QC	RPD	Qualifier
GRO C6-C10*	<10.0	10.0	11/02/2023	ND	204	102	200	1.62	
DRO >C10-C28*	<10.0	10.0	11/02/2023	ND	209	105	200	0.212	
EXT DRO >C28-C36	<10.0	10.0	11/02/2023	ND					

Surrogate: 1-Chlorooctane 72.1 % 48.2-134

Surrogate: 1-Chlorooctadecane 81.4 % 49.1-148

Cardinal Laboratories

*=Accredited Analyte

PLEASE NOTE: Liability and Damages. Cardinal's liability and client's exclusive remedy for any claim arising, whether based in contract or tort, shall be limited to the amount paid by client for analyses. All claims, including those for negligence and any other cause whatsoever shall be deemed waived unless made in writing and received by Cardinal within thirty (30) days after completion of the applicable service. In no event shall Cardinal be liable for incidental or consequential damages, including, without limitation, business interruptions, loss of use, or loss of profits incurred by client, its subsidiaries, affiliates or successors arising out of or related to the performance of the services hereunder by Cardinal, regardless of whether such claim is based upon any of the above stated reasons or otherwise. Results relate only to the samples identified above. This report shall not be reproduced except in full with written approval of Cardinal Laboratories.

Mike Snyder For Celey D. Keene, Lab Director/Quality Manager



PHONE (575) 393-2326 ° 101 E. MARLAND ° HOBBS, NM 88240

Analytical Results For:

TETRA TECH
 CHRISTIAN LLULL
 901 WEST WALL STREET , STE 100
 MIDLAND TX, 79701
 Fax To: (432) 682-3946

Received:	10/27/2023	Sampling Date:	10/27/2023
Reported:	11/03/2023	Sampling Type:	Soil
Project Name:	STAMPEDE FEDERAL WC COM 34 #001 I	Sampling Condition:	Cool & Intact
Project Number:	212C-MD-03248	Sample Received By:	Dionica Hinojos
Project Location:	EDDY CO NM		

Sample ID: AH - 1 (1.5'-2') (H235918-03)

BTEx 8021B		mg/kg		Analyzed By: JH/						
Analyte	Result	Reporting Limit	Analyzed	Method Blank	BS	% Recovery	True Value QC	RPD	Qualifier	
Benzene*	<0.050	0.050	11/02/2023	ND	2.02	101	2.00	2.63		
Toluene*	<0.050	0.050	11/02/2023	ND	1.86	92.9	2.00	6.11		
Ethylbenzene*	<0.050	0.050	11/02/2023	ND	1.91	95.3	2.00	8.03		
Total Xylenes*	<0.150	0.150	11/02/2023	ND	5.64	94.1	6.00	9.31		
Total BTEX	<0.300	0.300	11/02/2023	ND						

Surrogate: 4-Bromofluorobenzene (PID) 98.0 % 71.5-134

Chloride, SM4500Cl-B		mg/kg		Analyzed By: AC					
Analyte	Result	Reporting Limit	Analyzed	Method Blank	BS	% Recovery	True Value QC	RPD	Qualifier
Chloride	688	16.0	11/02/2023	ND	416	104	400	0.00	

TPH 8015M		mg/kg		Analyzed By: MS					
Analyte	Result	Reporting Limit	Analyzed	Method Blank	BS	% Recovery	True Value QC	RPD	Qualifier
GRO C6-C10*	<10.0	10.0	11/02/2023	ND	204	102	200	1.62	
DRO >C10-C28*	<10.0	10.0	11/02/2023	ND	209	105	200	0.212	
EXT DRO >C28-C36	<10.0	10.0	11/02/2023	ND					

Surrogate: 1-Chlorooctane 86.9 % 48.2-134

Surrogate: 1-Chlorooctadecane 97.7 % 49.1-148

Cardinal Laboratories

*=Accredited Analyte

PLEASE NOTE: Liability and Damages. Cardinal's liability and client's exclusive remedy for any claim arising, whether based in contract or tort, shall be limited to the amount paid by client for analyses. All claims, including those for negligence and any other cause whatsoever shall be deemed waived unless made in writing and received by Cardinal within thirty (30) days after completion of the applicable service. In no event shall Cardinal be liable for incidental or consequential damages, including, without limitation, business interruptions, loss of use, or loss of profits incurred by client, its subsidiaries, affiliates or successors arising out of or related to the performance of the services hereunder by Cardinal, regardless of whether such claim is based upon any of the above stated reasons or otherwise. Results relate only to the samples identified above. This report shall not be reproduced except in full with written approval of Cardinal Laboratories.

Mike Snyder For Celey D. Keene, Lab Director/Quality Manager



PHONE (575) 393-2326 ° 101 E. MARLAND ° HOBBS, NM 88240

Analytical Results For:

TETRA TECH
 CHRISTIAN LLULL
 901 WEST WALL STREET , STE 100
 MIDLAND TX, 79701
 Fax To: (432) 682-3946

Received:	10/27/2023	Sampling Date:	10/27/2023
Reported:	11/03/2023	Sampling Type:	Soil
Project Name:	STAMPEDE FEDERAL WC COM 34 #001	Sampling Condition:	Cool & Intact
Project Number:	212C-MD-03248	Sample Received By:	Dionica Hinojos
Project Location:	EDDY CO NM		

Sample ID: AH - 2 (0-1') (H235918-04)

BTEx 8021B		mg/kg		Analyzed By: JH/						
Analyte	Result	Reporting Limit	Analyzed	Method Blank	BS	% Recovery	True Value QC	RPD	Qualifier	
Benzene*	<0.050	0.050	11/02/2023	ND	2.02	101	2.00	2.63		
Toluene*	<0.050	0.050	11/02/2023	ND	1.86	92.9	2.00	6.11		
Ethylbenzene*	<0.050	0.050	11/02/2023	ND	1.91	95.3	2.00	8.03		
Total Xylenes*	<0.150	0.150	11/02/2023	ND	5.64	94.1	6.00	9.31		
Total BTEX	<0.300	0.300	11/02/2023	ND						

Surrogate: 4-Bromofluorobenzene (PID) 102 % 71.5-134

Chloride, SM4500Cl-B		mg/kg		Analyzed By: AC						
Analyte	Result	Reporting Limit	Analyzed	Method Blank	BS	% Recovery	True Value QC	RPD	Qualifier	
Chloride	192	16.0	11/02/2023	ND	416	104	400	0.00		

TPH 8015M		mg/kg		Analyzed By: MS					
Analyte	Result	Reporting Limit	Analyzed	Method Blank	BS	% Recovery	True Value QC	RPD	Qualifier
GRO C6-C10*	<10.0	10.0	11/02/2023	ND	204	102	200	1.62	
DRO >C10-C28*	<10.0	10.0	11/02/2023	ND	209	105	200	0.212	
EXT DRO >C28-C36	<10.0	10.0	11/02/2023	ND					

Surrogate: 1-Chlorooctane 77.8 % 48.2-134

Surrogate: 1-Chlorooctadecane 86.2 % 49.1-148

Cardinal Laboratories

*=Accredited Analyte

PLEASE NOTE: Liability and Damages. Cardinal's liability and client's exclusive remedy for any claim arising, whether based in contract or tort, shall be limited to the amount paid by client for analyses. All claims, including those for negligence and any other cause whatsoever shall be deemed waived unless made in writing and received by Cardinal within thirty (30) days after completion of the applicable service. In no event shall Cardinal be liable for incidental or consequential damages, including, without limitation, business interruptions, loss of use, or loss of profits incurred by client, its subsidiaries, affiliates or successors arising out of or related to the performance of the services hereunder by Cardinal, regardless of whether such claim is based upon any of the above stated reasons or otherwise. Results relate only to the samples identified above. This report shall not be reproduced except in full with written approval of Cardinal Laboratories.

Mike Snyder For Celey D. Keene, Lab Director/Quality Manager



PHONE (575) 393-2326 ° 101 E. MARLAND ° HOBBS, NM 88240

Analytical Results For:

TETRA TECH
 CHRISTIAN LLULL
 901 WEST WALL STREET , STE 100
 MIDLAND TX, 79701
 Fax To: (432) 682-3946

Received:	10/27/2023	Sampling Date:	10/27/2023
Reported:	11/03/2023	Sampling Type:	Soil
Project Name:	STAMPEDE FEDERAL WC COM 34 #001	Sampling Condition:	Cool & Intact
Project Number:	212C-MD-03248	Sample Received By:	Dionica Hinojos
Project Location:	EDDY CO NM		

Sample ID: AH - 2 (1'-1.5') (H235918-05)

BTEx 8021B		mg/kg		Analyzed By: JH/					
Analyte	Result	Reporting Limit	Analyzed	Method Blank	BS	% Recovery	True Value QC	RPD	Qualifier
Benzene*	<0.050	0.050	11/02/2023	ND	2.02	101	2.00	2.63	
Toluene*	<0.050	0.050	11/02/2023	ND	1.86	92.9	2.00	6.11	
Ethylbenzene*	<0.050	0.050	11/02/2023	ND	1.91	95.3	2.00	8.03	
Total Xylenes*	<0.150	0.150	11/02/2023	ND	5.64	94.1	6.00	9.31	
Total BTEX	<0.300	0.300	11/02/2023	ND					

Surrogate: 4-Bromofluorobenzene (PID) 103 % 71.5-134

Chloride, SM4500Cl-B		mg/kg		Analyzed By: AC					
Analyte	Result	Reporting Limit	Analyzed	Method Blank	BS	% Recovery	True Value QC	RPD	Qualifier
Chloride	112	16.0	11/02/2023	ND	416	104	400	0.00	

TPH 8015M		mg/kg		Analyzed By: MS					
Analyte	Result	Reporting Limit	Analyzed	Method Blank	BS	% Recovery	True Value QC	RPD	Qualifier
GRO C6-C10*	<10.0	10.0	11/02/2023	ND	204	102	200	1.62	
DRO >C10-C28*	<10.0	10.0	11/02/2023	ND	209	105	200	0.212	
EXT DRO >C28-C36	<10.0	10.0	11/02/2023	ND					

Surrogate: 1-Chlorooctane 83.3 % 48.2-134

Surrogate: 1-Chlorooctadecane 92.4 % 49.1-148

Cardinal Laboratories

*=Accredited Analyte

PLEASE NOTE: Liability and Damages. Cardinal's liability and client's exclusive remedy for any claim arising, whether based in contract or tort, shall be limited to the amount paid by client for analyses. All claims, including those for negligence and any other cause whatsoever shall be deemed waived unless made in writing and received by Cardinal within thirty (30) days after completion of the applicable service. In no event shall Cardinal be liable for incidental or consequential damages, including, without limitation, business interruptions, loss of use, or loss of profits incurred by client, its subsidiaries, affiliates or successors arising out of or related to the performance of the services hereunder by Cardinal, regardless of whether such claim is based upon any of the above stated reasons or otherwise. Results relate only to the samples identified above. This report shall not be reproduced except in full with written approval of Cardinal Laboratories.

Mike Snyder For Celey D. Keene, Lab Director/Quality Manager



PHONE (575) 393-2326 ° 101 E. MARLAND ° HOBBS, NM 88240

Analytical Results For:

TETRA TECH
 CHRISTIAN LLULL
 901 WEST WALL STREET , STE 100
 MIDLAND TX, 79701
 Fax To: (432) 682-3946

Received:	10/27/2023	Sampling Date:	10/27/2023
Reported:	11/03/2023	Sampling Type:	Soil
Project Name:	STAMPEDE FEDERAL WC COM 34 #001 I	Sampling Condition:	Cool & Intact
Project Number:	212C-MD-03248	Sample Received By:	Dionica Hinojos
Project Location:	EDDY CO NM		

Sample ID: AH - 2 (1.5'-2') (H235918-06)

BTEx 8021B		mg/kg		Analyzed By: JH/					
Analyte	Result	Reporting Limit	Analyzed	Method Blank	BS	% Recovery	True Value QC	RPD	Qualifier
Benzene*	<0.050	0.050	11/02/2023	ND	2.02	101	2.00	2.63	
Toluene*	<0.050	0.050	11/02/2023	ND	1.86	92.9	2.00	6.11	
Ethylbenzene*	<0.050	0.050	11/02/2023	ND	1.91	95.3	2.00	8.03	
Total Xylenes*	<0.150	0.150	11/02/2023	ND	5.64	94.1	6.00	9.31	
Total BTEX	<0.300	0.300	11/02/2023	ND					

Surrogate: 4-Bromofluorobenzene (PID) 101 % 71.5-134

Chloride, SM4500Cl-B		mg/kg		Analyzed By: AC					
Analyte	Result	Reporting Limit	Analyzed	Method Blank	BS	% Recovery	True Value QC	RPD	Qualifier
Chloride	112	16.0	11/02/2023	ND	416	104	400	0.00	

TPH 8015M		mg/kg		Analyzed By: MS					
Analyte	Result	Reporting Limit	Analyzed	Method Blank	BS	% Recovery	True Value QC	RPD	Qualifier
GRO C6-C10*	<10.0	10.0	11/02/2023	ND	204	102	200	1.62	
DRO >C10-C28*	<10.0	10.0	11/02/2023	ND	209	105	200	0.212	
EXT DRO >C28-C36	<10.0	10.0	11/02/2023	ND					

Surrogate: 1-Chlorooctane 80.3 % 48.2-134

Surrogate: 1-Chlorooctadecane 90.0 % 49.1-148

Cardinal Laboratories

*=Accredited Analyte

PLEASE NOTE: Liability and Damages. Cardinal's liability and client's exclusive remedy for any claim arising, whether based in contract or tort, shall be limited to the amount paid by client for analyses. All claims, including those for negligence and any other cause whatsoever shall be deemed waived unless made in writing and received by Cardinal within thirty (30) days after completion of the applicable service. In no event shall Cardinal be liable for incidental or consequential damages, including, without limitation, business interruptions, loss of use, or loss of profits incurred by client, its subsidiaries, affiliates or successors arising out of or related to the performance of the services hereunder by Cardinal, regardless of whether such claim is based upon any of the above stated reasons or otherwise. Results relate only to the samples identified above. This report shall not be reproduced except in full with written approval of Cardinal Laboratories.

Mike Snyder For Celey D. Keene, Lab Director/Quality Manager



PHONE (575) 393-2326 ° 101 E. MARLAND ° HOBBS, NM 88240

Analytical Results For:

TETRA TECH
 CHRISTIAN LLULL
 901 WEST WALL STREET , STE 100
 MIDLAND TX, 79701
 Fax To: (432) 682-3946

Received:	10/27/2023	Sampling Date:	10/27/2023
Reported:	11/03/2023	Sampling Type:	Soil
Project Name:	STAMPEDE FEDERAL WC COM 34 #001	Sampling Condition:	Cool & Intact
Project Number:	212C-MD-03248	Sample Received By:	Dionica Hinojos
Project Location:	EDDY CO NM		

Sample ID: AH - 3 (H235918-07)

BTEx 8021B		mg/kg		Analyzed By: JH/					
Analyte	Result	Reporting Limit	Analyzed	Method Blank	BS	% Recovery	True Value QC	RPD	Qualifier
Benzene*	<0.050	0.050	11/02/2023	ND	2.02	101	2.00	2.63	
Toluene*	<0.050	0.050	11/02/2023	ND	1.86	92.9	2.00	6.11	
Ethylbenzene*	<0.050	0.050	11/02/2023	ND	1.91	95.3	2.00	8.03	
Total Xylenes*	<0.150	0.150	11/02/2023	ND	5.64	94.1	6.00	9.31	
Total BTEX	<0.300	0.300	11/02/2023	ND					

Surrogate: 4-Bromofluorobenzene (PID) 104 % 71.5-134

Chloride, SM4500Cl-B		mg/kg		Analyzed By: AC						
Analyte	Result	Reporting Limit	Analyzed	Method Blank	BS	% Recovery	True Value QC	RPD	Qualifier	
Chloride	176	16.0	11/02/2023	ND	416	104	400	0.00		

TPH 8015M		mg/kg		Analyzed By: MS						
Analyte	Result	Reporting Limit	Analyzed	Method Blank	BS	% Recovery	True Value QC	RPD	Qualifier	
GRO C6-C10*	<10.0	10.0	11/02/2023	ND	204	102	200	1.62		
DRO >C10-C28*	<10.0	10.0	11/02/2023	ND	209	105	200	0.212		
EXT DRO >C28-C36	<10.0	10.0	11/02/2023	ND						

Surrogate: 1-Chlorooctane 75.0 % 48.2-134

Surrogate: 1-Chlorooctadecane 82.5 % 49.1-148

Cardinal Laboratories

*=Accredited Analyte

PLEASE NOTE: Liability and Damages. Cardinal's liability and client's exclusive remedy for any claim arising, whether based in contract or tort, shall be limited to the amount paid by client for analyses. All claims, including those for negligence and any other cause whatsoever shall be deemed waived unless made in writing and received by Cardinal within thirty (30) days after completion of the applicable service. In no event shall Cardinal be liable for incidental or consequential damages, including, without limitation, business interruptions, loss of use, or loss of profits incurred by client, its subsidiaries, affiliates or successors arising out of or related to the performance of the services hereunder by Cardinal, regardless of whether such claim is based upon any of the above stated reasons or otherwise. Results relate only to the samples identified above. This report shall not be reproduced except in full with written approval of Cardinal Laboratories.

Mike Snyder For Celey D. Keene, Lab Director/Quality Manager



PHONE (575) 393-2326 ° 101 E. MARLAND ° HOBBS, NM 88240

Analytical Results For:

TETRA TECH
 CHRISTIAN LLULL
 901 WEST WALL STREET , STE 100
 MIDLAND TX, 79701
 Fax To: (432) 682-3946

Received:	10/27/2023	Sampling Date:	10/27/2023
Reported:	11/03/2023	Sampling Type:	Soil
Project Name:	STAMPEDE FEDERAL WC COM 34 #001 I	Sampling Condition:	Cool & Intact
Project Number:	212C-MD-03248	Sample Received By:	Dionica Hinojos
Project Location:	EDDY CO NM		

Sample ID: AH - 4 (H235918-08)

BTEx 8021B		mg/kg		Analyzed By: JH/						
Analyte	Result	Reporting Limit	Analyzed	Method Blank	BS	% Recovery	True Value QC	RPD	Qualifier	
Benzene*	<0.050	0.050	11/02/2023	ND	2.02	101	2.00	2.63		
Toluene*	<0.050	0.050	11/02/2023	ND	1.86	92.9	2.00	6.11		
Ethylbenzene*	<0.050	0.050	11/02/2023	ND	1.91	95.3	2.00	8.03		
Total Xylenes*	<0.150	0.150	11/02/2023	ND	5.64	94.1	6.00	9.31		
Total BTEX	<0.300	0.300	11/02/2023	ND						

Surrogate: 4-Bromofluorobenzene (PID) 96.2 % 71.5-134

Chloride, SM4500Cl-B		mg/kg		Analyzed By: AC						
Analyte	Result	Reporting Limit	Analyzed	Method Blank	BS	% Recovery	True Value QC	RPD	Qualifier	
Chloride	80.0	16.0	11/02/2023	ND	416	104	400	0.00		

TPH 8015M		mg/kg		Analyzed By: MS						
Analyte	Result	Reporting Limit	Analyzed	Method Blank	BS	% Recovery	True Value QC	RPD	Qualifier	
GRO C6-C10*	<10.0	10.0	11/02/2023	ND	182	90.9	200	2.91		
DRO >C10-C28*	<10.0	10.0	11/02/2023	ND	168	84.2	200	2.94		
EXT DRO >C28-C36	<10.0	10.0	11/02/2023	ND						

Surrogate: 1-Chlorooctane 85.1 % 48.2-134

Surrogate: 1-Chlorooctadecane 85.7 % 49.1-148

Cardinal Laboratories

*=Accredited Analyte

PLEASE NOTE: Liability and Damages. Cardinal's liability and client's exclusive remedy for any claim arising, whether based in contract or tort, shall be limited to the amount paid by client for analyses. All claims, including those for negligence and any other cause whatsoever shall be deemed waived unless made in writing and received by Cardinal within thirty (30) days after completion of the applicable service. In no event shall Cardinal be liable for incidental or consequential damages, including, without limitation, business interruptions, loss of use, or loss of profits incurred by client, its subsidiaries, affiliates or successors arising out of or related to the performance of the services hereunder by Cardinal, regardless of whether such claim is based upon any of the above stated reasons or otherwise. Results relate only to the samples identified above. This report shall not be reproduced except in full with written approval of Cardinal Laboratories.

Mike Snyder For Celey D. Keene, Lab Director/Quality Manager



PHONE (575) 393-2326 ° 101 E. MARLAND ° HOBBS, NM 88240

Analytical Results For:

TETRA TECH
 CHRISTIAN LLULL
 901 WEST WALL STREET , STE 100
 MIDLAND TX, 79701
 Fax To: (432) 682-3946

Received:	10/27/2023	Sampling Date:	10/27/2023
Reported:	11/03/2023	Sampling Type:	Soil
Project Name:	STAMPEDE FEDERAL WC COM 34 #001 I	Sampling Condition:	Cool & Intact
Project Number:	212C-MD-03248	Sample Received By:	Dionica Hinojos
Project Location:	EDDY CO NM		

Sample ID: AH - 5 (H235918-09)

BTEx 8021B		mg/kg		Analyzed By: JH/					
Analyte	Result	Reporting Limit	Analyzed	Method Blank	BS	% Recovery	True Value QC	RPD	Qualifier
Benzene*	<0.050	0.050	11/02/2023	ND	2.02	101	2.00	2.63	
Toluene*	<0.050	0.050	11/02/2023	ND	1.86	92.9	2.00	6.11	
Ethylbenzene*	<0.050	0.050	11/02/2023	ND	1.91	95.3	2.00	8.03	
Total Xylenes*	<0.150	0.150	11/02/2023	ND	5.64	94.1	6.00	9.31	
Total BTEX	<0.300	0.300	11/02/2023	ND					

Surrogate: 4-Bromofluorobenzene (PID) 104 % 71.5-134

Chloride, SM4500Cl-B		mg/kg		Analyzed By: AC						
Analyte	Result	Reporting Limit	Analyzed	Method Blank	BS	% Recovery	True Value QC	RPD	Qualifier	
Chloride	48.0	16.0	11/02/2023	ND	416	104	400	0.00		

TPH 8015M		mg/kg		Analyzed By: MS						
Analyte	Result	Reporting Limit	Analyzed	Method Blank	BS	% Recovery	True Value QC	RPD	Qualifier	
GRO C6-C10*	<10.0	10.0	11/02/2023	ND	182	90.9	200	2.91		
DRO >C10-C28*	<10.0	10.0	11/02/2023	ND	168	84.2	200	2.94		
EXT DRO >C28-C36	<10.0	10.0	11/02/2023	ND						

Surrogate: 1-Chlorooctane 72.6 % 48.2-134

Surrogate: 1-Chlorooctadecane 73.2 % 49.1-148

Cardinal Laboratories

*=Accredited Analyte

PLEASE NOTE: Liability and Damages. Cardinal's liability and client's exclusive remedy for any claim arising, whether based in contract or tort, shall be limited to the amount paid by client for analyses. All claims, including those for negligence and any other cause whatsoever shall be deemed waived unless made in writing and received by Cardinal within thirty (30) days after completion of the applicable service. In no event shall Cardinal be liable for incidental or consequential damages, including, without limitation, business interruptions, loss of use, or loss of profits incurred by client, its subsidiaries, affiliates or successors arising out of or related to the performance of the services hereunder by Cardinal, regardless of whether such claim is based upon any of the above stated reasons or otherwise. Results relate only to the samples identified above. This report shall not be reproduced except in full with written approval of Cardinal Laboratories.

Mike Snyder For Celey D. Keene, Lab Director/Quality Manager



PHONE (575) 393-2326 ° 101 E. MARLAND ° HOBBS, NM 88240

Analytical Results For:

TETRA TECH
 CHRISTIAN LLULL
 901 WEST WALL STREET , STE 100
 MIDLAND TX, 79701
 Fax To: (432) 682-3946

Received:	10/27/2023	Sampling Date:	10/27/2023
Reported:	11/03/2023	Sampling Type:	Soil
Project Name:	STAMPEDE FEDERAL WC COM 34 #001 I	Sampling Condition:	Cool & Intact
Project Number:	212C-MD-03248	Sample Received By:	Dionica Hinojos
Project Location:	EDDY CO NM		

Sample ID: AH - 6 (H235918-10)

BTEx 8021B		mg/kg		Analyzed By: JH/						
Analyte	Result	Reporting Limit	Analyzed	Method Blank	BS	% Recovery	True Value QC	RPD	Qualifier	
Benzene*	<0.050	0.050	11/02/2023	ND	2.02	101	2.00	2.63		
Toluene*	<0.050	0.050	11/02/2023	ND	1.86	92.9	2.00	6.11		
Ethylbenzene*	<0.050	0.050	11/02/2023	ND	1.91	95.3	2.00	8.03		
Total Xylenes*	<0.150	0.150	11/02/2023	ND	5.64	94.1	6.00	9.31		
Total BTEx	<0.300	0.300	11/02/2023	ND						

Surrogate: 4-Bromofluorobenzene (PID) 102 % 71.5-134

Chloride, SM4500CI-B		mg/kg		Analyzed By: AC						
Analyte	Result	Reporting Limit	Analyzed	Method Blank	BS	% Recovery	True Value QC	RPD	Qualifier	
Chloride	64.0	16.0	11/02/2023	ND	416	104	400	0.00		

TPH 8015M		mg/kg		Analyzed By: MS					
Analyte	Result	Reporting Limit	Analyzed	Method Blank	BS	% Recovery	True Value QC	RPD	Qualifier
GRO C6-C10*	<10.0	10.0	11/02/2023	ND	182	90.9	200	2.91	
DRO >C10-C28*	<10.0	10.0	11/02/2023	ND	168	84.2	200	2.94	
EXT DRO >C28-C36	<10.0	10.0	11/02/2023	ND					

Surrogate: 1-Chlorooctane 76.2 % 48.2-134

Surrogate: 1-Chlorooctadecane 74.3 % 49.1-148

Cardinal Laboratories

*=Accredited Analyte

PLEASE NOTE: Liability and Damages. Cardinal's liability and client's exclusive remedy for any claim arising, whether based in contract or tort, shall be limited to the amount paid by client for analyses. All claims, including those for negligence and any other cause whatsoever shall be deemed waived unless made in writing and received by Cardinal within thirty (30) days after completion of the applicable service. In no event shall Cardinal be liable for incidental or consequential damages, including, without limitation, business interruptions, loss of use, or loss of profits incurred by client, its subsidiaries, affiliates or successors arising out of or related to the performance of the services hereunder by Cardinal, regardless of whether such claim is based upon any of the above stated reasons or otherwise. Results relate only to the samples identified above. This report shall not be reproduced except in full with written approval of Cardinal Laboratories.

Mike Snyder For Celey D. Keene, Lab Director/Quality Manager



PHONE (575) 393-2326 ° 101 E. MARLAND ° HOBBS, NM 88240

Analytical Results For:

TETRA TECH
 CHRISTIAN LLULL
 901 WEST WALL STREET , STE 100
 MIDLAND TX, 79701
 Fax To: (432) 682-3946

Received:	10/27/2023	Sampling Date:	10/27/2023
Reported:	11/03/2023	Sampling Type:	Soil
Project Name:	STAMPEDE FEDERAL WC COM 34 #001 I	Sampling Condition:	Cool & Intact
Project Number:	212C-MD-03248	Sample Received By:	Dionica Hinojos
Project Location:	EDDY CO NM		

Sample ID: AH - 7 (H235918-11)

BTEx 8021B		mg/kg		Analyzed By: JH/						
Analyte	Result	Reporting Limit	Analyzed	Method Blank	BS	% Recovery	True Value QC	RPD	Qualifier	
Benzene*	<0.050	0.050	11/02/2023	ND	2.02	101	2.00	2.63		
Toluene*	<0.050	0.050	11/02/2023	ND	1.86	92.9	2.00	6.11		
Ethylbenzene*	<0.050	0.050	11/02/2023	ND	1.91	95.3	2.00	8.03		
Total Xylenes*	<0.150	0.150	11/02/2023	ND	5.64	94.1	6.00	9.31		
Total BTEX	<0.300	0.300	11/02/2023	ND						

Surrogate: 4-Bromofluorobenzene (PID) 104 % 71.5-134

Chloride, SM4500Cl-B		mg/kg		Analyzed By: AC						
Analyte	Result	Reporting Limit	Analyzed	Method Blank	BS	% Recovery	True Value QC	RPD	Qualifier	
Chloride	64.0	16.0	11/02/2023	ND	416	104	400	0.00		

TPH 8015M		mg/kg		Analyzed By: MS						
Analyte	Result	Reporting Limit	Analyzed	Method Blank	BS	% Recovery	True Value QC	RPD	Qualifier	
GRO C6-C10*	<10.0	10.0	11/02/2023	ND	182	90.9	200	2.91		
DRO >C10-C28*	<10.0	10.0	11/02/2023	ND	168	84.2	200	2.94		
EXT DRO >C28-C36	<10.0	10.0	11/02/2023	ND						

Surrogate: 1-Chlorooctane 76.8 % 48.2-134

Surrogate: 1-Chlorooctadecane 77.8 % 49.1-148

Cardinal Laboratories

*=Accredited Analyte

PLEASE NOTE: Liability and Damages. Cardinal's liability and client's exclusive remedy for any claim arising, whether based in contract or tort, shall be limited to the amount paid by client for analyses. All claims, including those for negligence and any other cause whatsoever shall be deemed waived unless made in writing and received by Cardinal within thirty (30) days after completion of the applicable service. In no event shall Cardinal be liable for incidental or consequential damages, including, without limitation, business interruptions, loss of use, or loss of profits incurred by client, its subsidiaries, affiliates or successors arising out of or related to the performance of the services hereunder by Cardinal, regardless of whether such claim is based upon any of the above stated reasons or otherwise. Results relate only to the samples identified above. This report shall not be reproduced except in full with written approval of Cardinal Laboratories.

Mike Snyder For Celey D. Keene, Lab Director/Quality Manager



PHONE (575) 393-2326 ° 101 E. MARLAND ° HOBBS, NM 88240

Notes and Definitions

- ND Analyte NOT DETECTED at or above the reporting limit
- RPD Relative Percent Difference
- ** Samples not received at proper temperature of 6°C or below.
- *** Insufficient time to reach temperature.
- Chloride by SM4500Cl-B does not require samples be received at or below 6°C
Samples reported on an as received basis (wet) unless otherwise noted on report

Cardinal Laboratories

*=Accredited Analyte

PLEASE NOTE: Liability and Damages. Cardinal's liability and client's exclusive remedy for any claim arising, whether based in contract or tort, shall be limited to the amount paid by client for analyses. All claims, including those for negligence and any other cause whatsoever shall be deemed waived unless made in writing and received by Cardinal within thirty (30) days after completion of the applicable service. In no event shall Cardinal be liable for incidental or consequential damages, including, without limitation, business interruptions, loss of use, or loss of profits incurred by client, its subsidiaries, affiliates or successors arising out of or related to the performance of the services hereunder by Cardinal, regardless of whether such claim is based upon any of the above stated reasons or otherwise. Results relate only to the samples identified above. This report shall not be reproduced except in full with written approval of Cardinal Laboratories.

A handwritten signature in black ink, appearing to read "Mike Snyder".

Mike Snyder For Celey D. Keene, Lab Director/Quality Manager



101 East Marland, Hobbs, NM 88240
(575) 393-2326 FAX (575) 393-2476

CHAIN-OF-CUSTODY AND ANALYSIS REQUEST

Page 1 of 2

[illegible]



CARDINAL
Laboratories

101 East Marland, Hobbs, NM 88240
(575) 393-2326 FAX (575) 393-2476

CHAIN-OF-CUSTODY AND ANALYSIS REQUEST

Page 7 of 2

[illegible]



PHONE (575) 393-2326 ° 101 E. MARLAND ° HOBBS, NM 88240

December 18, 2023

CHRISTIAN LLULL

TETRA TECH

901 WEST WALL STREET , STE 100

MIDLAND, TX 79701

RE: STAMPEDE FEDERAL WC COM 34 #001 H RELEASE

Enclosed are the results of analyses for samples received by the laboratory on 12/13/23 9:50.

Cardinal Laboratories is accredited through Texas NELAP under certificate number T104704398-22-15. Accreditation applies to drinking water, non-potable water and solid and chemical materials. All accredited analytes are denoted by an asterisk (*). For a complete list of accredited analytes and matrices visit the TCEQ website at www.tceq.texas.gov/field/qa/lab_accred_certif.html.

Cardinal Laboratories is accredited through the State of Colorado Department of Public Health and Environment for:

Method EPA 552.2	Haloacetic Acids (HAA-5)
Method EPA 524.2	Total Trihalomethanes (TTHM)
Method EPA 524.4	Regulated VOCs (V1, V2, V3)

Accreditation applies to public drinking water matrices.

This report meets NELAP requirements and is made up of a cover page, analytical results, and a copy of the original chain-of-custody. If you have any questions concerning this report, please feel free to contact me.

Sincerely,

A handwritten signature in black ink that reads "Celey D. Keene".

Celey D. Keene

Lab Director/Quality Manager



PHONE (575) 393-2326 ° 101 E. MARLAND ° HOBBS, NM 88240

Analytical Results For:

TETRA TECH
 CHRISTIAN LLULL
 901 WEST WALL STREET , STE 100
 MIDLAND TX, 79701
 Fax To: (432) 682-3946

Received:	12/13/2023	Sampling Date:	12/11/2023
Reported:	12/18/2023	Sampling Type:	Soil
Project Name:	STAMPEDE FEDERAL WC COM 34 #001 I	Sampling Condition:	Cool & Intact
Project Number:	212C-MD-03246	Sample Received By:	Shalyn Rodriguez
Project Location:	EDDY CO NM		

Sample ID: T - 1 (0-1') (H236645-01)

BTX 8021B		mg/kg		Analyzed By: JH					
Analyte	Result	Reporting Limit	Analyzed	Method Blank	BS	% Recovery	True Value QC	RPD	Qualifier
Benzene*	<0.050	0.050	12/13/2023	ND	2.19	109	2.00	3.69	
Toluene*	<0.050	0.050	12/13/2023	ND	2.35	118	2.00	5.50	
Ethylbenzene*	<0.050	0.050	12/13/2023	ND	2.49	124	2.00	6.92	
Total Xylenes*	<0.150	0.150	12/13/2023	ND	7.43	124	6.00	8.67	
Total BTX	<0.300	0.300	12/13/2023	ND					

Surrogate: 4-Bromofluorobenzene (PID) 109 % 71.5-134

Chloride, SM4500Cl-B		mg/kg		Analyzed By: HM					
Analyte	Result	Reporting Limit	Analyzed	Method Blank	BS	% Recovery	True Value QC	RPD	Qualifier
Chloride	592	16.0	12/14/2023	ND	400	100	400	11.3	

TPH 8015M		mg/kg		Analyzed By: MS					
Analyte	Result	Reporting Limit	Analyzed	Method Blank	BS	% Recovery	True Value QC	RPD	Qualifier
GRO C6-C10*	<10.0	10.0	12/13/2023	ND	210	105	200	2.48	
DRO >C10-C28*	<10.0	10.0	12/13/2023	ND	184	92.2	200	6.88	
EXT DRO >C28-C36	<10.0	10.0	12/13/2023	ND					

Surrogate: 1-Chlorooctane 91.8 % 48.2-134

Surrogate: 1-Chlorooctadecane 83.6 % 49.1-148

Cardinal Laboratories

*=Accredited Analyte

PLEASE NOTE: Liability and Damages. Cardinal's liability and client's exclusive remedy for any claim arising, whether based in contract or tort, shall be limited to the amount paid by client for analyses. All claims, including those for negligence and any other cause whatsoever shall be deemed waived unless made in writing and received by Cardinal within thirty (30) days after completion of the applicable service. In no event shall Cardinal be liable for incidental or consequential damages, including, without limitation, business interruptions, loss of use, or loss of profits incurred by client, its subsidiaries, affiliates or successors arising out of or related to the performance of the services hereunder by Cardinal, regardless of whether such claim is based upon any of the above stated reasons or otherwise. Results relate only to the samples identified above. This report shall not be reproduced except in full with written approval of Cardinal Laboratories.

Celey D. Keene, Lab Director/Quality Manager



PHONE (575) 393-2326 ° 101 E. MARLAND ° HOBBS, NM 88240

Analytical Results For:

TETRA TECH
 CHRISTIAN LLULL
 901 WEST WALL STREET , STE 100
 MIDLAND TX, 79701
 Fax To: (432) 682-3946

Received:	12/13/2023	Sampling Date:	12/11/2023
Reported:	12/18/2023	Sampling Type:	Soil
Project Name:	STAMPEDE FEDERAL WC COM 34 #001 I	Sampling Condition:	Cool & Intact
Project Number:	212C-MD-03246	Sample Received By:	Shalyn Rodriguez
Project Location:	EDDY CO NM		

Sample ID: T - 1 (2'-3') (H236645-02)

BTEx 8021B		mg/kg		Analyzed By: JH						
Analyte	Result	Reporting Limit	Analyzed	Method Blank	BS	% Recovery	True Value QC	RPD	Qualifier	
Benzene*	<0.050	0.050	12/13/2023	ND	2.19	109	2.00	3.69		
Toluene*	<0.050	0.050	12/13/2023	ND	2.35	118	2.00	5.50		
Ethylbenzene*	<0.050	0.050	12/13/2023	ND	2.49	124	2.00	6.92		
Total Xylenes*	<0.150	0.150	12/13/2023	ND	7.43	124	6.00	8.67		
Total BTEX	<0.300	0.300	12/13/2023	ND						

Surrogate: 4-Bromofluorobenzene (PID) 118 % 71.5-134

Chloride, SM4500Cl-B		mg/kg		Analyzed By: HM						
Analyte	Result	Reporting Limit	Analyzed	Method Blank	BS	% Recovery	True Value QC	RPD	Qualifier	
Chloride	304	16.0	12/14/2023	ND	400	100	400	11.3		

TPH 8015M		mg/kg		Analyzed By: MS					
Analyte	Result	Reporting Limit	Analyzed	Method Blank	BS	% Recovery	True Value QC	RPD	Qualifier
GRO C6-C10*	<10.0	10.0	12/13/2023	ND	210	105	200	2.48	
DRO >C10-C28*	<10.0	10.0	12/13/2023	ND	184	92.2	200	6.88	
EXT DRO >C28-C36	<10.0	10.0	12/13/2023	ND					

Surrogate: 1-Chlorooctane 84.3 % 48.2-134

Surrogate: 1-Chlorooctadecane 76.8 % 49.1-148

Cardinal Laboratories

*=Accredited Analyte

PLEASE NOTE: Liability and Damages. Cardinal's liability and client's exclusive remedy for any claim arising, whether based in contract or tort, shall be limited to the amount paid by client for analyses. All claims, including those for negligence and any other cause whatsoever shall be deemed waived unless made in writing and received by Cardinal within thirty (30) days after completion of the applicable service. In no event shall Cardinal be liable for incidental or consequential damages, including, without limitation, business interruptions, loss of use, or loss of profits incurred by client, its subsidiaries, affiliates or successors arising out of or related to the performance of the services hereunder by Cardinal, regardless of whether such claim is based upon any of the above stated reasons or otherwise. Results relate only to the samples identified above. This report shall not be reproduced except in full with written approval of Cardinal Laboratories.

Celey D. Keene, Lab Director/Quality Manager



PHONE (575) 393-2326 ° 101 E. MARLAND ° HOBBS, NM 88240

Analytical Results For:

TETRA TECH
 CHRISTIAN LLULL
 901 WEST WALL STREET , STE 100
 MIDLAND TX, 79701
 Fax To: (432) 682-3946

Received:	12/13/2023	Sampling Date:	12/11/2023
Reported:	12/18/2023	Sampling Type:	Soil
Project Name:	STAMPEDE FEDERAL WC COM 34 #001	Sampling Condition:	Cool & Intact
Project Number:	212C-MD-03246	Sample Received By:	Shalyn Rodriguez
Project Location:	EDDY CO NM		

Sample ID: T - 2 (0-1') (H236645-03)

BTEX 8021B		mg/kg		Analyzed By: JH					
Analyte	Result	Reporting Limit	Analyzed	Method Blank	BS	% Recovery	True Value QC	RPD	Qualifier
Benzene*	<0.050	0.050	12/13/2023	ND	2.19	109	2.00	3.69	
Toluene*	<0.050	0.050	12/13/2023	ND	2.35	118	2.00	5.50	
Ethylbenzene*	<0.050	0.050	12/13/2023	ND	2.49	124	2.00	6.92	
Total Xylenes*	<0.150	0.150	12/13/2023	ND	7.43	124	6.00	8.67	
Total BTEX	<0.300	0.300	12/13/2023	ND					

Surrogate: 4-Bromofluorobenzene (PID) 110 % 71.5-134

Chloride, SM4500Cl-B		mg/kg		Analyzed By: HM					
Analyte	Result	Reporting Limit	Analyzed	Method Blank	BS	% Recovery	True Value QC	RPD	Qualifier
Chloride	48.0	16.0	12/14/2023	ND	400	100	400	11.3	

TPH 8015M		mg/kg		Analyzed By: MS					
Analyte	Result	Reporting Limit	Analyzed	Method Blank	BS	% Recovery	True Value QC	RPD	Qualifier
GRO C6-C10*	<10.0	10.0	12/13/2023	ND	210	105	200	2.48	
DRO >C10-C28*	<10.0	10.0	12/13/2023	ND	184	92.2	200	6.88	
EXT DRO >C28-C36	<10.0	10.0	12/13/2023	ND					

Surrogate: 1-Chlorooctane 85.0 % 48.2-134

Surrogate: 1-Chlorooctadecane 76.6 % 49.1-148

Cardinal Laboratories

*=Accredited Analyte

PLEASE NOTE: Liability and Damages. Cardinal's liability and client's exclusive remedy for any claim arising, whether based in contract or tort, shall be limited to the amount paid by client for analyses. All claims, including those for negligence and any other cause whatsoever shall be deemed waived unless made in writing and received by Cardinal within thirty (30) days after completion of the applicable service. In no event shall Cardinal be liable for incidental or consequential damages, including, without limitation, business interruptions, loss of use, or loss of profits incurred by client, its subsidiaries, affiliates or successors arising out of or related to the performance of the services hereunder by Cardinal, regardless of whether such claim is based upon any of the above stated reasons or otherwise. Results relate only to the samples identified above. This report shall not be reproduced except in full with written approval of Cardinal Laboratories.

Celey D. Keene, Lab Director/Quality Manager



PHONE (575) 393-2326 ° 101 E. MARLAND ° HOBBS, NM 88240

Analytical Results For:

TETRA TECH
 CHRISTIAN LLULL
 901 WEST WALL STREET , STE 100
 MIDLAND TX, 79701
 Fax To: (432) 682-3946

Received:	12/13/2023	Sampling Date:	12/11/2023
Reported:	12/18/2023	Sampling Type:	Soil
Project Name:	STAMPEDE FEDERAL WC COM 34 #001	Sampling Condition:	Cool & Intact
Project Number:	212C-MD-03246	Sample Received By:	Shalyn Rodriguez
Project Location:	EDDY CO NM		

Sample ID: T - 2 (2'-3') (H236645-04)

BTEx 8021B		mg/kg		Analyzed By: JH						
Analyte	Result	Reporting Limit	Analyzed	Method Blank	BS	% Recovery	True Value QC	RPD	Qualifier	
Benzene*	<0.050	0.050	12/13/2023	ND	2.19	109	2.00	3.69		
Toluene*	<0.050	0.050	12/13/2023	ND	2.35	118	2.00	5.50		
Ethylbenzene*	<0.050	0.050	12/13/2023	ND	2.49	124	2.00	6.92		
Total Xylenes*	<0.150	0.150	12/13/2023	ND	7.43	124	6.00	8.67		
Total BTEX	<0.300	0.300	12/13/2023	ND						

Surrogate: 4-Bromofluorobenzene (PID) 109 % 71.5-134

Chloride, SM4500Cl-B		mg/kg		Analyzed By: HM						
Analyte	Result	Reporting Limit	Analyzed	Method Blank	BS	% Recovery	True Value QC	RPD	Qualifier	
Chloride	80.0	16.0	12/14/2023	ND	400	100	400	11.3		

TPH 8015M		mg/kg		Analyzed By: MS					
Analyte	Result	Reporting Limit	Analyzed	Method Blank	BS	% Recovery	True Value QC	RPD	Qualifier
GRO C6-C10*	<10.0	10.0	12/13/2023	ND	210	105	200	2.48	
DRO >C10-C28*	<10.0	10.0	12/13/2023	ND	184	92.2	200	6.88	
EXT DRO >C28-C36	<10.0	10.0	12/13/2023	ND					

Surrogate: 1-Chlorooctane 95.2 % 48.2-134

Surrogate: 1-Chlorooctadecane 86.1 % 49.1-148

Cardinal Laboratories

*=Accredited Analyte

PLEASE NOTE: Liability and Damages. Cardinal's liability and client's exclusive remedy for any claim arising, whether based in contract or tort, shall be limited to the amount paid by client for analyses. All claims, including those for negligence and any other cause whatsoever shall be deemed waived unless made in writing and received by Cardinal within thirty (30) days after completion of the applicable service. In no event shall Cardinal be liable for incidental or consequential damages, including, without limitation, business interruptions, loss of use, or loss of profits incurred by client, its subsidiaries, affiliates or successors arising out of or related to the performance of the services hereunder by Cardinal, regardless of whether such claim is based upon any of the above stated reasons or otherwise. Results relate only to the samples identified above. This report shall not be reproduced except in full with written approval of Cardinal Laboratories.

Celey D. Keene, Lab Director/Quality Manager



PHONE (575) 393-2326 ° 101 E. MARLAND ° HOBBS, NM 88240

Analytical Results For:

TETRA TECH
 CHRISTIAN LLULL
 901 WEST WALL STREET , STE 100
 MIDLAND TX, 79701
 Fax To: (432) 682-3946

Received:	12/13/2023	Sampling Date:	12/11/2023
Reported:	12/18/2023	Sampling Type:	Soil
Project Name:	STAMPEDE FEDERAL WC COM 34 #001	Sampling Condition:	Cool & Intact
Project Number:	212C-MD-03246	Sample Received By:	Shalyn Rodriguez
Project Location:	EDDY CO NM		

Sample ID: AH - 8 (0-1') (H236645-05)

BTEx 8021B		mg/kg		Analyzed By: JH						
Analyte	Result	Reporting Limit	Analyzed	Method Blank	BS	% Recovery	True Value QC	RPD	Qualifier	
Benzene*	<0.050	0.050	12/13/2023	ND	2.19	109	2.00	3.69		
Toluene*	<0.050	0.050	12/13/2023	ND	2.35	118	2.00	5.50		
Ethylbenzene*	<0.050	0.050	12/13/2023	ND	2.49	124	2.00	6.92		
Total Xylenes*	<0.150	0.150	12/13/2023	ND	7.43	124	6.00	8.67		
Total BTEX	<0.300	0.300	12/13/2023	ND						

Surrogate: 4-Bromofluorobenzene (PID) 101 % 71.5-134

Chloride, SM4500Cl-B		mg/kg		Analyzed By: HM						
Analyte	Result	Reporting Limit	Analyzed	Method Blank	BS	% Recovery	True Value QC	RPD	Qualifier	
Chloride	48.0	16.0	12/14/2023	ND	400	100	400	11.3		

TPH 8015M		mg/kg		Analyzed By: MS					
Analyte	Result	Reporting Limit	Analyzed	Method Blank	BS	% Recovery	True Value QC	RPD	Qualifier
GRO C6-C10*	<10.0	10.0	12/13/2023	ND	210	105	200	2.48	
DRO >C10-C28*	<10.0	10.0	12/13/2023	ND	184	92.2	200	6.88	
EXT DRO >C28-C36	<10.0	10.0	12/13/2023	ND					

Surrogate: 1-Chlorooctane 89.9 % 48.2-134

Surrogate: 1-Chlorooctadecane 79.9 % 49.1-148

Cardinal Laboratories

*=Accredited Analyte

PLEASE NOTE: Liability and Damages. Cardinal's liability and client's exclusive remedy for any claim arising, whether based in contract or tort, shall be limited to the amount paid by client for analyses. All claims, including those for negligence and any other cause whatsoever shall be deemed waived unless made in writing and received by Cardinal within thirty (30) days after completion of the applicable service. In no event shall Cardinal be liable for incidental or consequential damages, including, without limitation, business interruptions, loss of use, or loss of profits incurred by client, its subsidiaries, affiliates or successors arising out of or related to the performance of the services hereunder by Cardinal, regardless of whether such claim is based upon any of the above stated reasons or otherwise. Results relate only to the samples identified above. This report shall not be reproduced except in full with written approval of Cardinal Laboratories.

Celey D. Keene, Lab Director/Quality Manager



PHONE (575) 393-2326 ° 101 E. MARLAND ° HOBBS, NM 88240

Notes and Definitions

ND	Analyte NOT DETECTED at or above the reporting limit
RPD	Relative Percent Difference
**	Samples not received at proper temperature of 6°C or below.
***	Insufficient time to reach temperature.
-	Chloride by SM4500Cl-B does not require samples be received at or below 6°C Samples reported on an as received basis (wet) unless otherwise noted on report

Cardinal Laboratories

*=Accredited Analyte

PLEASE NOTE: Liability and Damages. Cardinal's liability and client's exclusive remedy for any claim arising, whether based in contract or tort, shall be limited to the amount paid by client for analyses. All claims, including those for negligence and any other cause whatsoever shall be deemed waived unless made in writing and received by Cardinal within thirty (30) days after completion of the applicable service. In no event shall Cardinal be liable for incidental or consequential damages, including, without limitation, business interruptions, loss of use, or loss of profits incurred by client, its subsidiaries, affiliates or successors arising out of or related to the performance of the services hereunder by Cardinal, regardless of whether such claim is based upon any of the above stated reasons or otherwise. Results relate only to the samples identified above. This report shall not be reproduced except in full with written approval of Cardinal Laboratories.

A handwritten signature in black ink, appearing to read "Celey D. Keene".

Celey D. Keene, Lab Director/Quality Manager



CHAIN-OF-CUSTODY AND ANALYSIS REQUEST

[illegible]

District I
1625 N. French Dr., Hobbs, NM 88240
Phone:(575) 393-6161 Fax:(575) 393-0720
District II
811 S. First St., Artesia, NM 88210
Phone:(575) 748-1283 Fax:(575) 748-9720
District III
1000 Rio Brazos Rd., Aztec, NM 87410
Phone:(505) 334-6178 Fax:(505) 334-6170
District IV
1220 S. St Francis Dr., Santa Fe, NM 87505
Phone:(505) 476-3470 Fax:(505) 476-3462

State of New Mexico
Energy, Minerals and Natural Resources
Oil Conservation Division
1220 S. St Francis Dr.
Santa Fe, NM 87505

QUESTIONS

Action 302199

QUESTIONS

Operator: CONOCOPHILLIPS COMPANY 600 W. Illinois Avenue Midland, TX 79701	OGRID:
	217817
	Action Number:
	302199
Action Type:	
[C-141] Site Char./Remediation Plan C-141 (C-141-v-Plan)	

QUESTIONS

Prerequisites	
Incident ID (n#)	nAB1431639646
Incident Name	NAB1431639646 STAMPEDE FEDERAL WC COM 34 #001H @ 30-015-42123
Incident Type	Other
Incident Status	Remediation Plan Received
Incident Well	[30-015-42123] STAMPEDE FEDERAL WC COM 34 #001H

Location of Release Source	
Please answer all the questions in this group.	
Site Name	STAMPEDE FEDERAL WC COM 34 #001H
Date Release Discovered	11/03/2014
Surface Owner	Federal

Incident Details	
Please answer all the questions in this group.	
Incident Type	Other
Did this release result in a fire or is the result of a fire	No
Did this release result in any injuries	No
Has this release reached or does it have a reasonable probability of reaching a watercourse	No
Has this release endangered or does it have a reasonable probability of endangering public health	No
Has this release substantially damaged or will it substantially damage property or the environment	No
Is this release of a volume that is or may with reasonable probability be detrimental to fresh water	No

Nature and Volume of Release	
Material(s) released, please answer all that apply below. Any calculations or specific justifications for the volumes provided should be attached to the follow-up C-141 submission.	
Crude Oil Released (bbls) Details	Cause: Equipment Failure Coupling Crude Oil Released: 0 BBL Recovered: 0 BBL Lost: 0 BBL.
Produced Water Released (bbls) Details	Cause: Equipment Failure Coupling Produced Water Released: 20 BBL Recovered: 19 BBL Lost: 1 BBL.
Is the concentration of chloride in the produced water >10,000 mg/l	No
Condensate Released (bbls) Details	Not answered.
Natural Gas Vented (Mcf) Details	Not answered.
Natural Gas Flared (Mcf) Details	Not answered.
Other Released Details	Cause: Equipment Failure Pump Other (Specify) Released: 20 BBL Recovered: 19 BBL Lost: 1 BBL.
Are there additional details for the questions above (i.e. any answer containing Other, Specify, Unknown, and/or Fire, or any negative lost amounts)	Not answered.

District I

1625 N. French Dr., Hobbs, NM 88240
Phone:(575) 393-6161 Fax:(575) 393-0720

District II

811 S. First St., Artesia, NM 88210
Phone:(575) 748-1283 Fax:(575) 748-9720

District III

1000 Rio Brazos Rd., Aztec, NM 87410
Phone:(505) 334-6178 Fax:(505) 334-6170

District IV

1220 S. St Francis Dr., Santa Fe, NM 87505
Phone:(505) 476-3470 Fax:(505) 476-3462

State of New Mexico
Energy, Minerals and Natural Resources
Oil Conservation Division
1220 S. St Francis Dr.
Santa Fe, NM 87505

QUESTIONS, Page 2

Action 302199

QUESTIONS (continued)

Operator: CONOCOPHILLIPS COMPANY 600 W. Illinois Avenue Midland, TX 79701	OGRID:
	217817
	Action Number:
	302199
Action Type:	
[C-141] Site Char./Remediation Plan C-141 (C-141-v-Plan)	

QUESTIONS

Nature and Volume of Release (continued)	
Is this a gas only submission (i.e. only significant Mcf values reported)	No, according to supplied volumes this does not appear to be a "gas only" report.
Was this a major release as defined by Subsection A of 19.15.29.7 NMAC	Yes
Reasons why this would be considered a submission for a notification of a major release	From paragraph A. "Major release" determine using: (1) an unauthorized release of a volume, excluding gases, of 25 barrels or more.
With the implementation of the 19.15.27 NMAC (05/25/2021), venting and/or flaring of natural gas (i.e. gas only) are to be submitted on the C-129 form.	

Initial Response

The responsible party must undertake the following actions immediately unless they could create a safety hazard that would result in injury.

The source of the release has been stopped	True
The impacted area has been secured to protect human health and the environment	True
Released materials have been contained via the use of berms or dikes, absorbent pads, or other containment devices	True
All free liquids and recoverable materials have been removed and managed appropriately	True
If all the actions described above have not been undertaken, explain why	Not answered.

Per Paragraph (4) of Subsection B of 19.15.29.8 NMAC the responsible party may commence remediation immediately after discovery of a release. If remediation has begun, please prepare and attach a narrative of actions to date in the follow-up C-141 submission. If remedial efforts have been successfully completed or if the release occurred within a lined containment area (see Subparagraph (a) of Paragraph (5) of Subsection A of 19.15.29.11 NMAC), please prepare and attach all information needed for closure evaluation in the follow-up C-141 submission.

I hereby certify that the information given above is true and complete to the best of my knowledge and understand that pursuant to OCD rules and regulations all operators are required to report and/or file certain release notifications and perform corrective actions for releases which may endanger public health or the environment. The acceptance of a C-141 report by the OCD does not relieve the operator of liability should their operations have failed to adequately investigate and remediate contamination that pose a threat to groundwater, surface water, human health or the environment. In addition, OCD acceptance of a C-141 report does not relieve the operator of responsibility for compliance with any other federal, state, or local laws and/or regulations.

I hereby agree and sign off to the above statement	Name: Christian LLuLL Title: Project Manager Email: christian.llull@tetrattech.com Date: 01/10/2024
--	--

District I

1625 N. French Dr., Hobbs, NM 88240
Phone:(575) 393-6161 Fax:(575) 393-0720

District II

811 S. First St., Artesia, NM 88210
Phone:(575) 748-1283 Fax:(575) 748-9720

District III

1000 Rio Brazos Rd., Aztec, NM 87410
Phone:(505) 334-6178 Fax:(505) 334-6170

District IV

1220 S. St Francis Dr., Santa Fe, NM 87505
Phone:(505) 476-3470 Fax:(505) 476-3462

State of New Mexico
Energy, Minerals and Natural Resources
Oil Conservation Division
1220 S. St Francis Dr.
Santa Fe, NM 87505

QUESTIONS, Page 3

Action 302199

QUESTIONS (continued)

Operator: CONOCOPHILLIPS COMPANY 600 W. Illinois Avenue Midland, TX 79701	OGRID: 217817
	Action Number: 302199
	Action Type: [C-141] Site Char./Remediation Plan C-141 (C-141-v-Plan)

QUESTIONS**Site Characterization**

Please answer all the questions in this group (only required when seeking remediation plan approval and beyond). This information must be provided to the appropriate district office no later than 90 days after the release discovery date.

What is the shallowest depth to groundwater beneath the area affected by the release in feet below ground surface (ft bgs)	Between 100 and 500 (ft.)
What method was used to determine the depth to ground water	NM OSE iWaters Database Search
Did this release impact groundwater or surface water	No
What is the minimum distance, between the closest lateral extents of the release and the following surface areas:	
A continuously flowing watercourse or any other significant watercourse	Between ½ and 1 (mi.)
Any lakebed, sinkhole, or playa lake (measured from the ordinary high-water mark)	Greater than 5 (mi.)
An occupied permanent residence, school, hospital, institution, or church	Greater than 5 (mi.)
A spring or a private domestic fresh water well used by less than five households for domestic or stock watering purposes	Greater than 5 (mi.)
Any other fresh water well or spring	Greater than 5 (mi.)
Incorporated municipal boundaries or a defined municipal fresh water well field	Greater than 5 (mi.)
A wetland	Greater than 5 (mi.)
A subsurface mine	Greater than 5 (mi.)
An (non-karst) unstable area	Greater than 5 (mi.)
Categorize the risk of this well / site being in a karst geology	Medium
A 100-year floodplain	Greater than 5 (mi.)
Did the release impact areas not on an exploration, development, production, or storage site	No

Remediation Plan

Please answer all the questions that apply or are indicated. This information must be provided to the appropriate district office no later than 90 days after the release discovery date.

Requesting a remediation plan approval with this submission	Yes
Attach a comprehensive report demonstrating the lateral and vertical extents of soil contamination associated with the release have been determined, pursuant to 19.15.29.11 NMAC and 19.15.29.13 NMAC.	
Have the lateral and vertical extents of contamination been fully delineated	Yes
Was this release entirely contained within a lined containment area	No

Soil Contamination Sampling: (Provide the highest observable value for each, in milligrams per kilograms.)

Chloride (EPA 300.0 or SM4500 Cl B)	960
TPH (GRO+DRO+MRO) (EPA SW-846 Method 8015M)	0
GRO+DRO (EPA SW-846 Method 8015M)	0
BTEX (EPA SW-846 Method 8021B or 8260B)	0
Benzene (EPA SW-846 Method 8021B or 8260B)	0

Per Subsection B of 19.15.29.11 NMAC unless the site characterization report includes completed efforts at remediation, the report must include a proposed remediation plan in accordance with 19.15.29.12 NMAC, which includes the anticipated timelines for beginning and completing the remediation.

On what estimated date will the remediation commence	03/10/2024
On what date will (or did) the final sampling or liner inspection occur	03/11/2024
On what date will (or was) the remediation complete(d)	03/13/2024
What is the estimated surface area (in square feet) that will be reclaimed	252
What is the estimated volume (in cubic yards) that will be reclaimed	30
What is the estimated surface area (in square feet) that will be remediated	252
What is the estimated volume (in cubic yards) that will be remediated	30

These estimated dates and measurements are recognized to be the best guess or calculation at the time of submission and may (be) change(d) over time as more remediation efforts are completed.

The OCD recognizes that proposed remediation measures may have to be minimally adjusted in accordance with the physical realities encountered during remediation. If the responsible party has any need to significantly deviate from the remediation plan proposed, then it should consult with the division to determine if another remediation plan submission is required.

District I

1625 N. French Dr., Hobbs, NM 88240
Phone:(575) 393-6161 Fax:(575) 393-0720

District II

811 S. First St., Artesia, NM 88210
Phone:(575) 748-1283 Fax:(575) 748-9720

District III

1000 Rio Brazos Rd., Aztec, NM 87410
Phone:(505) 334-6178 Fax:(505) 334-6170

District IV

1220 S. St Francis Dr., Santa Fe, NM 87505
Phone:(505) 476-3470 Fax:(505) 476-3462

State of New Mexico
Energy, Minerals and Natural Resources
Oil Conservation Division
1220 S. St Francis Dr.
Santa Fe, NM 87505

QUESTIONS, Page 4

Action 302199

QUESTIONS (continued)

Operator: CONOCOPHILLIPS COMPANY 600 W. Illinois Avenue Midland, TX 79701	OGRID: 217817
	Action Number: 302199
	Action Type: [C-141] Site Char./Remediation Plan C-141 (C-141-v-Plan)

QUESTIONS

Remediation Plan (continued)	
<i>Please answer all the questions that apply or are indicated. This information must be provided to the appropriate district office no later than 90 days after the release discovery date.</i>	
This remediation will (or is expected to) utilize the following processes to remediate / reduce contaminants:	
<i>(Select all answers below that apply.)</i>	
(Ex Situ) Excavation and off-site disposal (i.e. dig and haul, hydrovac, etc.)	Yes
Which OCD approved facility will be used for off-site disposal	HALFWAY DISPOSAL AND LANDFILL [fEEM0112334510]
OR which OCD approved well (API) will be used for off-site disposal	Not answered.
OR is the off-site disposal site, to be used, out-of-state	Not answered.
OR is the off-site disposal site, to be used, an NMED facility	Not answered.
(Ex Situ) Excavation and on-site remediation (i.e. On-Site Land Farms)	Not answered.
(In Situ) Soil Vapor Extraction	Not answered.
(In Situ) Chemical processing (i.e. Soil Shredding, Potassium Permanganate, etc.)	Not answered.
(In Situ) Biological processing (i.e. Microbes / Fertilizer, etc.)	Not answered.
(In Situ) Physical processing (i.e. Soil Washing, Gypsum, Disking, etc.)	Not answered.
Ground Water Abatement pursuant to 19.15.30 NMAC	Not answered.
OTHER (Non-listed remedial process)	Not answered.
<i>Per Subsection B of 19.15.29.11 NMAC unless the site characterization report includes completed efforts at remediation, the report must include a proposed remediation plan in accordance with 19.15.29.12 NMAC, which includes the anticipated timelines for beginning and completing the remediation.</i>	
I hereby certify that the information given above is true and complete to the best of my knowledge and understand that pursuant to OCD rules and regulations all operators are required to report and/or file certain release notifications and perform corrective actions for releases which may endanger public health or the environment. The acceptance of a C-141 report by the OCD does not relieve the operator of liability should their operations have failed to adequately investigate and remediate contamination that pose a threat to groundwater, surface water, human health or the environment. In addition, OCD acceptance of a C-141 report does not relieve the operator of responsibility for compliance with any other federal, state, or local laws and/or regulations.	
I hereby agree and sign off to the above statement	Name: Christian LLuLL Title: Project Manager Email: christian.llull@tetrattech.com Date: 01/10/2024
<i>The OCD recognizes that proposed remediation measures may have to be minimally adjusted in accordance with the physical realities encountered during remediation. If the responsible party has any need to significantly deviate from the remediation plan proposed, then it should consult with the division to determine if another remediation plan submission is required.</i>	

District I
1625 N. French Dr., Hobbs, NM 88240
Phone:(575) 393-6161 Fax:(575) 393-0720
District II
811 S. First St., Artesia, NM 88210
Phone:(575) 748-1283 Fax:(575) 748-9720
District III
1000 Rio Brazos Rd., Aztec, NM 87410
Phone:(505) 334-6178 Fax:(505) 334-6170
District IV
1220 S. St Francis Dr., Santa Fe, NM 87505
Phone:(505) 476-3470 Fax:(505) 476-3462

State of New Mexico
Energy, Minerals and Natural Resources
Oil Conservation Division
1220 S. St Francis Dr.
Santa Fe, NM 87505

QUESTIONS, Page 5

Action 302199

QUESTIONS (continued)

Operator: CONOCOPHILLIPS COMPANY 600 W. Illinois Avenue Midland, TX 79701	OGRID: 217817
	Action Number: 302199
	Action Type: [C-141] Site Char./Remediation Plan C-141 (C-141-v-Plan)

QUESTIONS

Deferral Requests Only	
<i>Only answer the questions in this group if seeking a deferral upon approval this submission. Each of the following items must be confirmed as part of any request for deferral of remediation.</i>	
Requesting a deferral of the remediation closure due date with the approval of this submission	No

District I
1625 N. French Dr., Hobbs, NM 88240
Phone:(575) 393-6161 Fax:(575) 393-0720
District II
811 S. First St., Artesia, NM 88210
Phone:(575) 748-1283 Fax:(575) 748-9720
District III
1000 Rio Brazos Rd., Aztec, NM 87410
Phone:(505) 334-6178 Fax:(505) 334-6170
District IV
1220 S. St Francis Dr., Santa Fe, NM 87505
Phone:(505) 476-3470 Fax:(505) 476-3462

State of New Mexico
Energy, Minerals and Natural Resources
Oil Conservation Division
1220 S. St Francis Dr.
Santa Fe, NM 87505

QUESTIONS, Page 6
Action 302199

QUESTIONS (continued)

Operator: CONOCOPHILLIPS COMPANY 600 W. Illinois Avenue Midland, TX 79701	OGRID: 217817
	Action Number: 302199
	Action Type: [C-141] Site Char./Remediation Plan C-141 (C-141-v-Plan)

QUESTIONS

Sampling Event Information	
Last sampling notification (C-141N) recorded	{Unavailable.}

Remediation Closure Request	
Only answer the questions in this group if seeking remediation closure for this release because all remediation steps have been completed.	
Requesting a remediation closure approval with this submission	No

District I
1625 N. French Dr., Hobbs, NM 88240
Phone:(575) 393-6161 Fax:(575) 393-0720
District II
811 S. First St., Artesia, NM 88210
Phone:(575) 748-1283 Fax:(575) 748-9720
District III
1000 Rio Brazos Rd., Aztec, NM 87410
Phone:(505) 334-6178 Fax:(505) 334-6170
District IV
1220 S. St Francis Dr., Santa Fe, NM 87505
Phone:(505) 476-3470 Fax:(505) 476-3462

State of New Mexico
Energy, Minerals and Natural Resources
Oil Conservation Division
1220 S. St Francis Dr.
Santa Fe, NM 87505

CONDITIONS

Action 302199

CONDITIONS

Operator: CONOCOPHILLIPS COMPANY 600 W. Illinois Avenue Midland, TX 79701	OGRID: 217817
	Action Number: 302199
	Action Type: [C-141] Site Char./Remediation Plan C-141 (C-141-v-Plan)

CONDITIONS

Created By	Condition	Condition Date
bhall	Remediation plan approved. Wall confirmation samples adjacent to the "exclusion zone" on Figures 4 and 5 will need to be collected if those areas are left in place due to the inability to excavate due to buried pressurized lines or other equipment.	1/23/2024
bhall	Submit a complete closure report through the OCD Permitting website by 4/23/2024.	1/23/2024