



## CLOSURE REPORT

Property:

### **South Eddy Flare Fire**

**Unit H, S01, T25S, R30E  
32.160411° N, 103.827911° W  
Eddy County, New Mexico  
NMOCD Incident ID: nAPP2316528547**

August 11, 2023  
Ensolum Project No. 03B1226287

Prepared for:

**Enterprise Field Services, LLC  
PO Box 4324  
Houston, TX 77210**

**Attn: Robert Dunaway**

Prepared by:

  
\_\_\_\_\_  
Kelly Lowery, GIT  
Project Manager

  
\_\_\_\_\_  
Beaux Jennings  
Senior Project Manager



## TABLE OF CONTENTS

1.0	INTRODUCTION.....	1
1.1	SITE DESCRIPTION & BACKGROUND .....	1
1.2	PROJECT OBJECTIVE.....	1
2.0	CLOSURE CRITERIA.....	1
3.0	SOIL REMEDIATION ACTIVITIES.....	3
4.0	SOIL SAMPLING PROGRAM .....	3
5.0	SOIL LABORATORY ANALYTICAL METHODS.....	4
6.0	DATA EVALUATION .....	4
7.0	RECLAMATION AND RE-VEGETATION .....	4
8.0	FINDINGS AND RECOMMENDATION .....	4
9.0	STANDARDS OF CARE, LIMITATIONS, AND RELIANCE .....	5
9.1	STANDARD OF CARE.....	5
9.2	LIMITATIONS.....	5
9.3	RELIANCE .....	6

## LIST OF APPENDICES

Appendix A: Figures

Appendix B: Supporting Documentation

Appendix C: Photographic Documentation

Appendix D: Table

Appendix E: Laboratory Data Sheets & Chain-of-Custody Documentation



## CLOSURE REPORT

### South Eddy Flare Fire

Unit H, S01, T25S, R30E  
32.160411° N, 103.827911° W  
Eddy County, New Mexico  
NMOCD Incident ID: nAPP2316528547

Ensolum Project No. 03B1226287

## 1.0 INTRODUCTION

### 1.1 Site Description & Background

<b>Operator:</b>	Enterprise Field Services, LLC (Enterprise)
<b>Site Name:</b>	South Eddy Flare Fire
<b>Location:</b>	Unit H, Section 01, Township 25 South, Range 30 East 32.160411° N, 103.827911° W Eddy County, New Mexico
<b>Property:</b>	On-Site: Private land (Enterprise) Off-Site: Bureau of Land Management (BLM)
<b>Regulatory:</b>	New Mexico Energy, Minerals and Natural Resources Department (EMNRD) Oil Conservation Division (OCD)

On June 14, 2023, condensate liquids from the flare knockout drafted to the flare, resulting in a fire that impacted both the South Eddy Cryo Plant, located on private land, and caused a mild brush fire on the adjacent BLM land. Approximately 30 barrels (bbls) of condensate liquids were released during the fire, with 0 bbls recovered. Enterprise reported the release to the New Mexico EMNRD OCD through the online notice of release (NOR) form on June 14, 2023. The release was subsequently assigned Incident Number nAPP2316528547.

The **Topographic Map** depicting the location of the Site is included as **Figure 1**, and the **Site Vicinity Map** is included as **Figure 2** in **Appendix A**.

### 1.2 Project Objective

The primary objective of the closure activities was to reduce constituent of concern (COC) concentrations in the on-Site soils to below the applicable New Mexico EMNRD OCD closure criteria concentrations.

## 2.0 CLOSURE CRITERIA

The Site is subject to regulatory oversight by the New Mexico EMNRD OCD. In order to address activities related to exempt oil and gas releases, the New Mexico EMNRD OCD references New Mexico Administrative Code (NMAC) 19.15.29 *Releases*, which establishes investigation and abatement action requirements for sites subject to reporting and/or corrective action. Ensolum, LLC (Ensolum) utilized information provided by Enterprise, the general site characteristics, and information available from the New Mexico Office of the State Engineer (OSE) and the New Mexico EMNRD OCD Imaging database to determine the appropriate closure criteria for the Site. The gas portion of this release constitutes venting that occurred during an emergency or a malfunction, as authorized by the New Mexico OCD regulations at NMAC 19.15.28.8.A and B(1). This release therefore is not prohibited by NMAC 19.15.29.8.A.



Closure Report  
South Eddy Flare Fire

August 11, 2023  
Page 2

Supporting documentation and figures associated with the following bullets are provided in **Appendix B**. One exploratory water well was identified adjacent west to the Site on the OSE Water Rights Reporting System (WRRS) database.

- The Site is not located within 300 feet of a New Mexico ENMRD OCD-defined continuously flowing watercourse or significant watercourse.
- The Site is not located within 200 feet of a lakebed, sinkhole or playa lake.
- The Site is not located within 300 feet from a permanent residence, school, hospital, institution or church.
- According to the OSE WRRS database there are no private, domestic freshwater wells used by less than five (5) households for domestic or stock water purposes identified within 500 feet of the Site.
- According to the OSE WRRS database there are no freshwater wells identified within 1,000 feet of the Site. However, there is a water well record (C03891) for a well at the facility, reportedly utilized for monitoring purposes. The depth to water in this well was reported to be 429 feet below ground surface (bgs).
- The Site is not located within incorporated municipal boundaries or within a defined municipal fresh water well field covered under a municipal ordinance adopted pursuant to NMSA 1978, Section 3-27-3.
- The Site is not located within 300 feet of a wetland. However, a freshwater emergent wetland is located on the southeast corner of the facility. The area is a lined pit excavated for use at the South Eddy Cryo Plant.
- Based on information identified on the New Mexico Mining and Minerals Division's GIS, Maps and Mine Data database, the Site is not located within an area overlying a subsurface mine.
- Based on the Karst Occurrence Potential (.kmz) provided by the BLM, the Site is located within a relatively stable area, also referred to as low karst.
- The Site is not located within a 100-year floodplain.

Based on the identified siting criteria, cleanup goals for soils remaining in place at the Site include:

Closure Criteria for Soils Impacted by a Release			
Minimum depth below any point within horizontal boundary of the release to groundwater less than 10,000 mg/l TDS	Constituent	Method	Limit
≤ 50 feet	Chloride	EPA 300.0 or SM4500 Cl B	600 mg/kg
	TPH (GRO+DRO+MRO)	EPA SW-846 Method 8015M	100 mg/kg
	BTEX	EPA SW-846 Method 8021B or 8260B	50 mg/kg
	Benzene	EPA SW-846 Method 8021B or 8260B	10 mg/kg



### 3.0 SOIL REMEDIATION ACTIVITIES

On June 14, 2023, condensate liquids from the flare knockout drafted to the flare, resulting in a fire that impacted both the South Eddy Cryo Plant, located on private land, and caused a mild brush fire on the adjacent BLM land. Approximately 30 bbls of condensate liquids were released during the fire, with 0 bbls recovered.

On June 28, 2023, Ensolum arrived on-Site to collect initial confirmation soil samples from the areas impacted by the flare fire. Four composite soil samples were collected on the facility property (SS01, SS02, SS03 and SS06), and two composite soil samples were collected on adjacent BLM land (SS04 and SS05). The confirmation soil samples were each collected at a depth of 0.25 feet bgs.

Additionally, on July 14, 2023, Ensolum arrived on-Site to collect four delineation soil samples from each area (12 samples total), outside of the impacted areas (N-1, N-2, N-3, E-1, E-2, E-3, W-1, W-2, W-3, S-1, S-2, and S-3). The delineation soil samples were each collected at a depth of 0.25 feet bgs.

Subsequent to receipt of laboratory analytical results, corrective actions to remove the fire-stained soils by scraping and removing the initial surface soils will be conducted by New Mexico Rental Pipeline, LLC (NMR) utilizing a backhoe.

The composite and confirmation soil samples were analyzed for total benzene, benzene, toluene, ethylbenzene, and xylene (BTEX), total petroleum hydrocarbons (TPH), gasoline range organics (GRO), diesel range organics (DRO), motor oil/lube oil range organics (MRO), and chloride in accordance with the New Mexico EMNRD OCD Closure Criteria for Soils Impacted by a Release (NMOCD Closure Criteria).

The impacted areas measured approximately 190 feet long and 60 feet wide and 30 feet long by 20 feet wide on the facility property, and 110 feet long by 40 feet wide on the adjacent BLM land.

The lithology encountered during the completion of closure activities consisted primarily of caliche pad on the facility property, and unconsolidated silty sand on the adjacent BLM land.

Based on correspondence between Ensolum and Enterprise, the affected soils within the South Eddy Cryo Plant and the adjacent BLM land will be scraped for good housekeeping measures. The excavation extent on the facility will be backfilled with clean caliche and will be contoured to the original surrounding grade. The excavation extent on the adjacent BLM property will be backfilled with clean imported fill, contoured to the original surrounding grade, and a BLM approved seed mixture will be sown into the surface area of the backfill for re-vegetation.

**Figure 3** is a map that identifies approximate soil sample locations and depicts the approximate dimensions of the impacted areas with respect to Site boundaries (**Appendix A**). Photographic documentation of the field activities is included in **Appendix C**.

### 4.0 SOIL SAMPLING PROGRAM

Ensolum's soil sampling program on June 28 and July 14, 2023 included the collection of a total of six composite soil samples from the areas impacted by the flare fire (SS01 through SS06), and 12 confirmation delineation soil samples from locations outside of the areas impacted by the flare fire (N-1, N-2, N-3, E-1, E-2, E-3, W-1, W-2, W-3, S-1, S-2, and S-3) for laboratory analysis.

The composite and confirmation soil samples were collected and placed in laboratory prepared glassware, labeled/sealed using laboratory supplied labels and custody seals, and stored on ice in a cooler. The samples were relinquished to Cardinal Laboratories in Hobbs, New Mexico, under proper chain-of-custody procedures.

## 5.0 SOIL LABORATORY ANALYTICAL METHODS

The composite and confirmation soil samples were analyzed for BTEX using Environmental Protection Agency (EPA) SW-846 Method 8021B, TPH GRO/DRO/MRO using EPA SW-846 Method 8015M, and chloride using EPA Method SM4500Cl-B.

Laboratory analytical results are summarized in **Table 1** in **Appendix D**. The executed chain-of-custody forms and laboratory data sheets are provided in **Appendix E**.

## 6.0 DATA EVALUATION

Ensolum compared the total benzene, BTEX, TPH GRO/DRO/MRO, and chloride concentrations or laboratory sample detection limits (SDLs) associated with the composite soil samples (SS01 through SS06) and the confirmation delineation soil samples (N-1, N-2, N-3, E-1, E-2, E-3, W-1, W-2, W-3, S-1, S-2, and S-3) to the NMOCD Closure Criteria.

- Laboratory analytical results indicate total benzene concentrations for the composite soil samples collected from the areas impacted by the flare fire and the confirmation delineation samples outside of the impacted area do not exceed the laboratory SDLs and/or the NMOCD Closure Criteria of 10 milligrams per kilogram (mg/kg).
- Laboratory analytical results indicate that total BTEX concentrations for the composite soil samples collected from the areas impacted by the flare fire and the confirmation delineation samples outside of the impacted area do not exceed the laboratory SDLs and/or the NMOCD Closure Criteria of 50 mg/kg.
- Laboratory analytical results indicate combined TPH GRO/DRO/MRO concentrations for the composite soil samples collected from the areas impacted by the flare fire and the confirmation delineation samples outside of the impacted area are below the laboratory SDLs and/or the applicable NMOCD Closure Criteria of 100 mg/kg from ≤50 feet.
- Laboratory analytical results indicate chloride concentrations for the composite soil samples collected from the areas impacted by the flare fire and the confirmation delineation samples outside of the impacted area do not exceed the laboratory SDLS and/or NMOCD Closure Criteria of 600 mg/kg from ≤50 feet.

Laboratory analytical results are summarized in **Table 1** in **Appendix D**.

## 7.0 RECLAMATION AND RE-VEGETATION

Subsequent to the results of the final confirmation soil sampling, the excavated fire-stained soils were removed and taken off-Site for proper disposal. The excavation extent on the facility was backfilled with clean caliche and was contoured to the original surrounding grade. The excavation extent on the adjacent BLM property was backfilled with clean imported fill, contoured to the original surrounding grade, and a BLM approved seed mixture was sown into the surface area of the backfill for re-vegetation.

## 8.0 FINDINGS AND RECOMMENDATION

- On June 14, 2023, condensate liquids from the flare knockout drafted to the flare, resulting in a fire that impacted both the South Eddy Cryo Plant, located on private land, and caused a mild brush fire on the adjacent BLM land. Approximately 30 bbls of condensate liquids were released during the fire, with 0 bbls recovered.

- On June 28, 2023, Ensolum arrived on-Site to collect initial confirmation soil samples from the areas impacted by the flare fire. Four composite soil samples were collected on the facility property (SS01, SS02, SS03 and SS06), and two composite soil samples were collected on the adjacent BLM land (SS04 and SS05). The confirmation soil samples were each collected at a depth of 0.25 feet bgs.
- Additionally, on July 14, 2023, Ensolum arrived on-Site to collect four delineation soil samples from each area (12 samples total), outside of the impacted areas (N-1, N-2, N-3, E-1, E-2, E-3, W-1, W-2, W-3, S-1, S-2, and S-3). The delineation soil samples were each collected at a depth of 0.25 feet bgs.
- Subsequent to receipt of laboratory analytical results, corrective actions to remove the fire-stained soils by scraping and removing the initial surface soils were conducted by NMR utilizing a backhoe.
- The primary objective of the closure activities was to reduce COC concentrations in the on-Site soils to below the applicable NMOCD Closure Criteria for Soils Impacted by a Release using the New Mexico EMNRD OCD's NMAC 19.15.29 *Releases* as guidance.
- The impacted areas measured approximately 190 feet long and 60 feet wide and 30 feet long by 20 feet wide on the facility property, and 110 feet long by 40 feet wide on the adjacent BLM land.
- A total of six composite soil samples from the areas impacted by the flare fire (SS01 through SS06), and 12 confirmation delineation soil samples from locations outside of the areas impacted by the flare fire (N-1, N-2, N-3, E-1, E-2, E-3, W-1, W-2, W-3, S-1, S-2, and S-3) were collected for laboratory analysis.
- Based on the laboratory analytical results, the composite soil samples collected from the impacted area and the delineation samples outside of the impacted area did not exhibit total benzene, total BTEX, TPH GRO/DRO/MRO or chloride concentrations above the applicable NMOCD Closure Criteria.

**Based on field observations and laboratory analytical results, no additional investigation or corrective action appears warranted at this time.**

## 9.0 STANDARDS OF CARE, LIMITATIONS, AND RELIANCE

### 9.1 Standard of Care

Ensolum's services were performed in accordance with standards customarily provided by a firm rendering the same or similar services in the area during the same time period. Ensolum makes no warranties, express or implied, as to the services performed hereunder. Additionally, Ensolum does not warrant the work of third parties supplying information used in the report (e.g. laboratories, regulatory agencies, or other third parties). This scope of services was performed in accordance with the scope of work agreed with the client, as detailed in our proposal.

### 9.2 Limitations

Findings, conclusions, and recommendations resulting from these services are based upon information derived from the on-site activities and other services performed under this scope of work and it should be noted that this information is subject to change over time. Certain indicators of the presence of hazardous substances, petroleum products, or other constituents may have been latent, inaccessible, unobservable, or not present during these services, and Ensolum cannot represent that the Site contains no hazardous substances, toxic materials, petroleum products, or other latent conditions beyond those identified during the investigation. Environmental conditions at other areas or portions of the Site may vary from those





encountered at actual sample locations. Ensolum's findings, and recommendations are based solely upon data available to Ensolum at the time of these services.

### **9.3 Reliance**

This report has been prepared for the exclusive use of Enterprise Field Services, LLC, and any authorization for use or reliance by any other party (except a governmental entity having jurisdiction over the Site) is prohibited without the express written authorization Enterprise Field Services, LLC and Ensolum. Any unauthorized distribution or reuse is at the client's sole risk. Notwithstanding the foregoing, reliance by authorized parties will be subject to the terms, conditions and limitations stated in the Closure Report, and Ensolum's Master Services Agreement. The limitation of liability defined in the agreement is the aggregate limit of Ensolum's liability to the client.

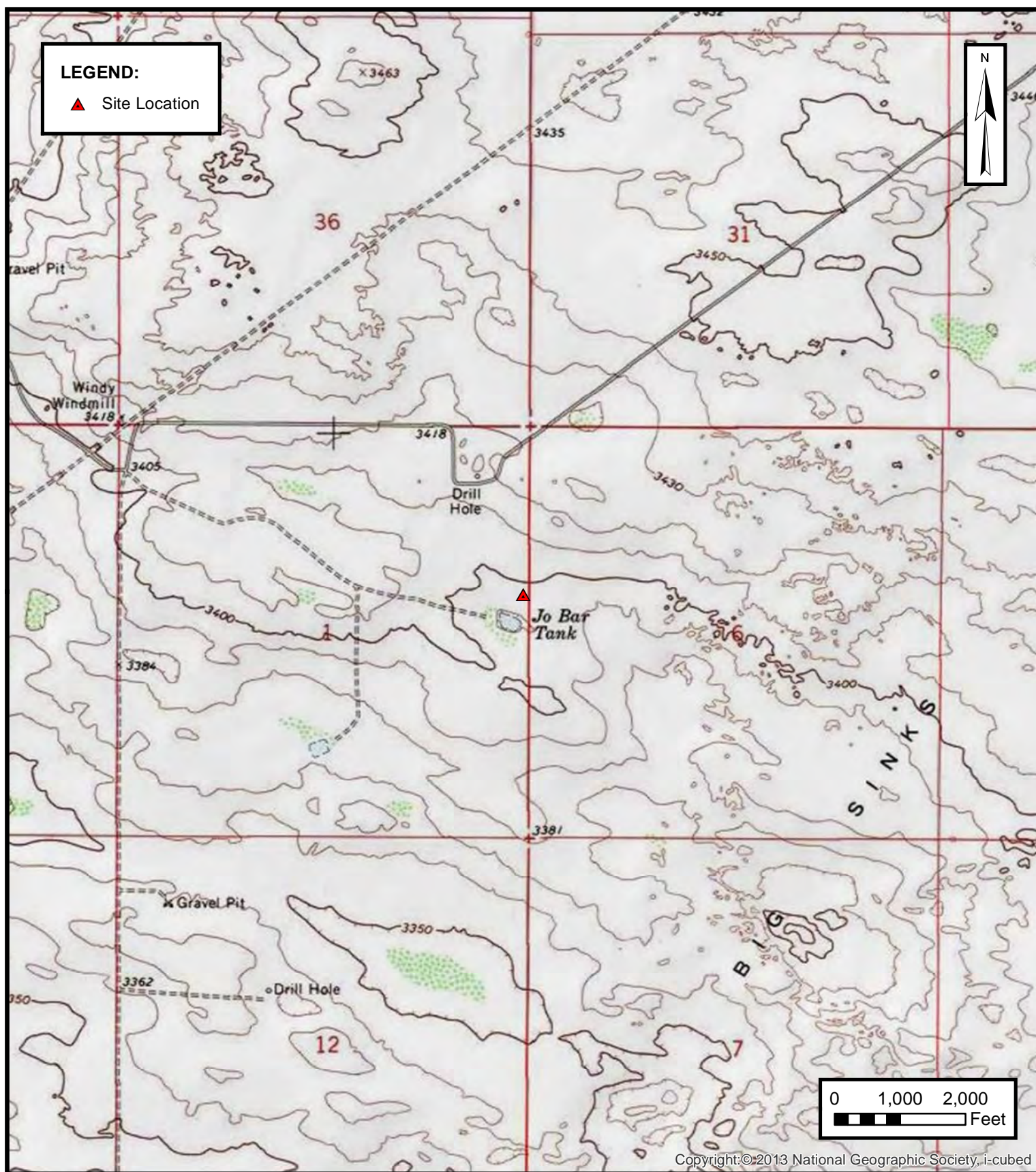




## APPENDIX A

### Figures

---



**ENSOLUM**  
Environmental, Engineering and  
Hydrogeologic Consultants

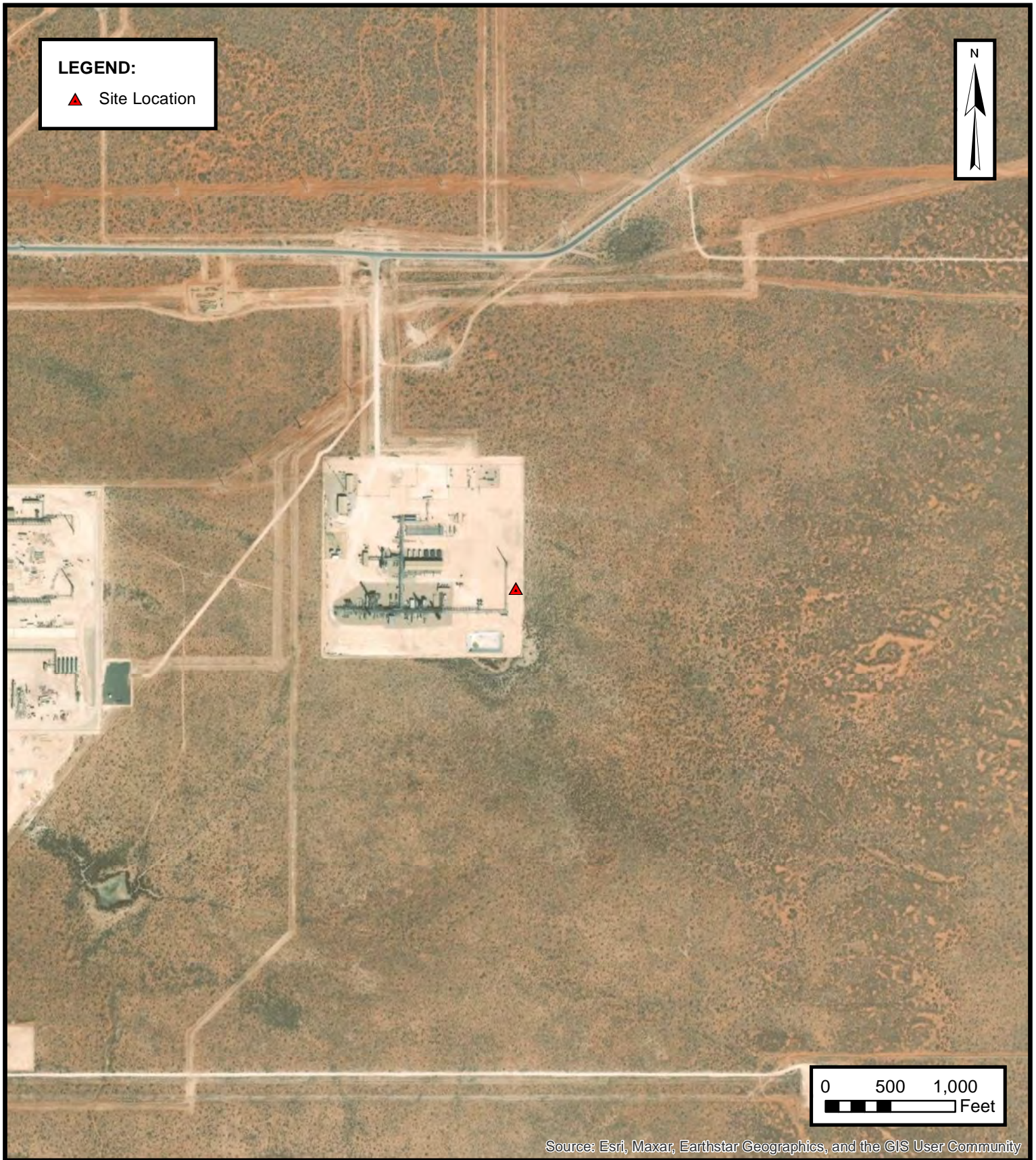
## TOPOGRAPHIC MAP

ENTERPRISE FIELD SERVICES, LLC  
SOUTH EDDY FLARE FIRE  
Eddy County, New Mexico  
32.160411° N, 103.827911° W

PROJECT NUMBER: 03B1226287

**FIGURE**  
**1**



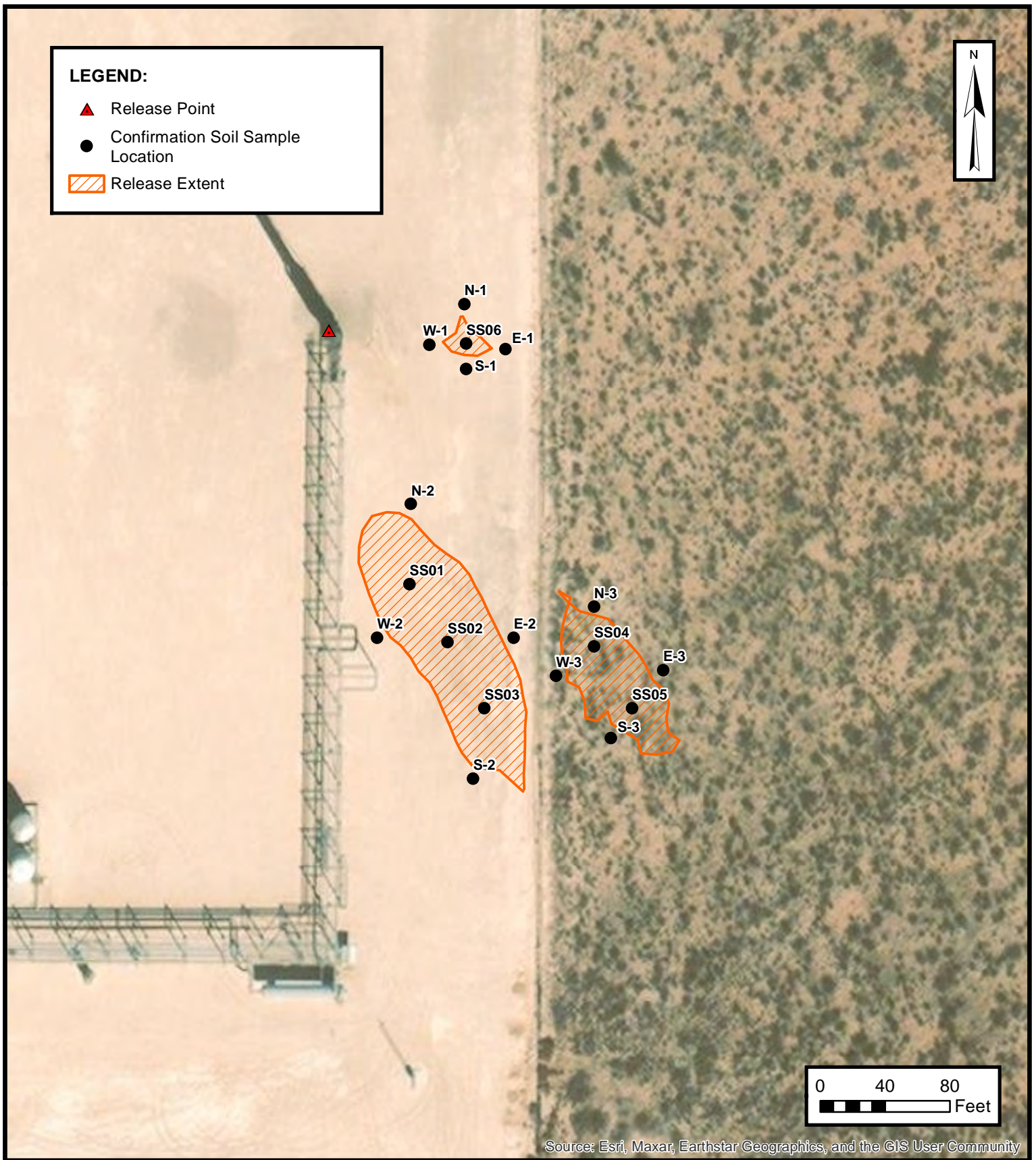


**SITE VICINITY MAP**  
ENTERPRISE FIELD SERVICES, LLC  
SOUTH EDDY FLARE FIRE  
Eddy County, New Mexico  
32.160411° N, 103.827911° W

PROJECT NUMBER: 03B1226287

**FIGURE**  
**2**





**SITE MAP**

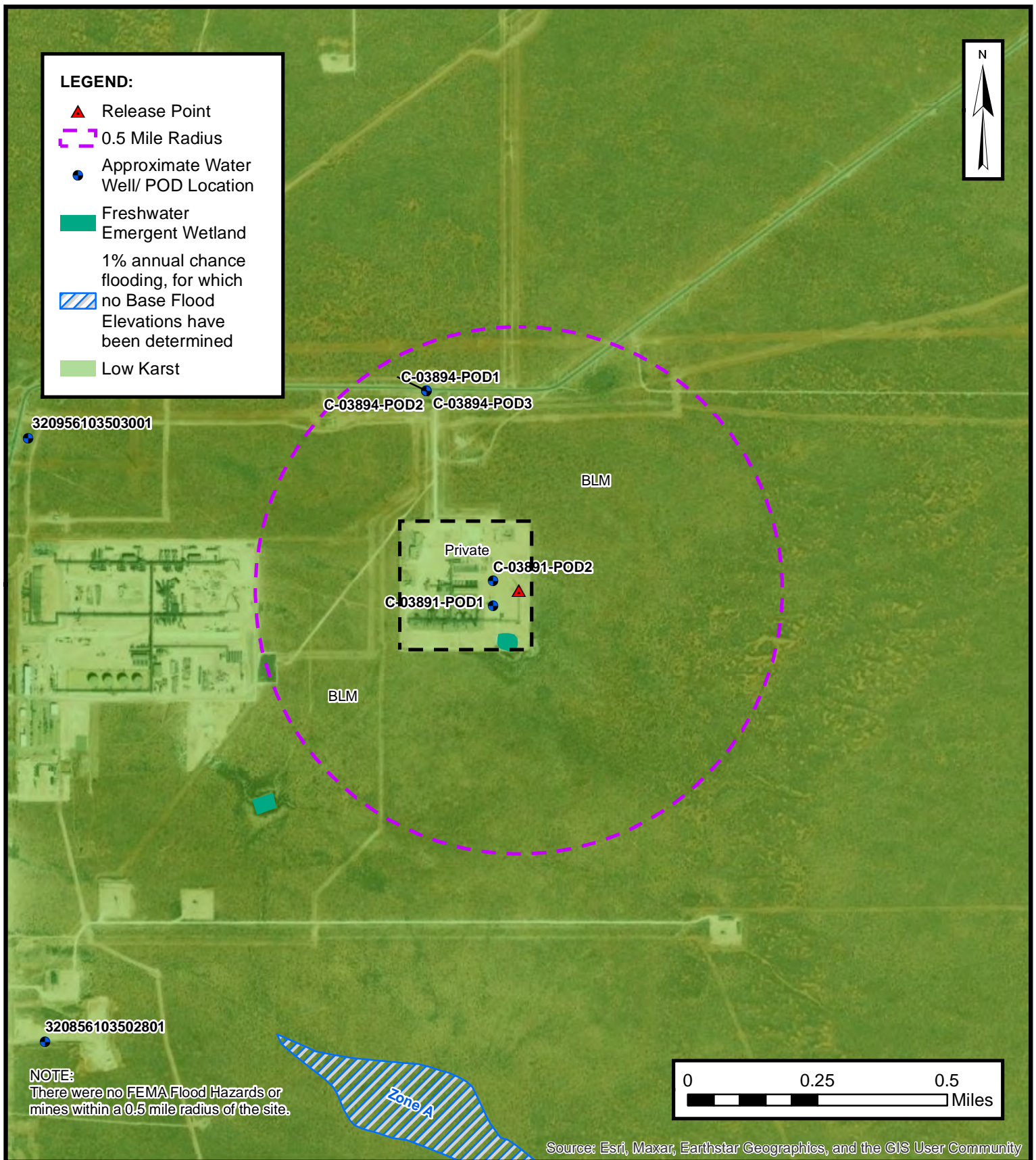
ENTERPRISE FIELD SERVICES, LLC  
SOUTH EDDY FLARE FIRE  
Eddy County, New Mexico  
32.160411° N, 103.827911° W

PROJECT NUMBER: 03B1226287

**FIGURE**

**3**



**CLOSURE CRITERIA MAP**

ENTERPRISE FIELD SERVICES, LLC  
 SOUTH EDDY FLARE FIRE  
 Eddy County, New Mexico  
 32.160411° N, 103.827911° W

PROJECT NUMBER: 03B1226287

**FIGURE****4**



## APPENDIX B

### Supporting Documentation

---

**Kelly Lowery**

---

**From:** Enviro, OCD, EMNRD <OCD.Enviro@emnrd.nm.gov>  
**Sent:** Wednesday, July 12, 2023 3:52 PM  
**To:** Kelly Lowery  
**Cc:** Bratcher, Michael, EMNRD; Hamlet, Robert, EMNRD  
**Subject:** RE: [EXTERNAL] South Eddy Cryo Plant (Incident ID #nAPP2316528547)

[ \*\*EXTERNAL EMAIL\*\* ]

Kelly,

Notification requirements are **two business days**, per rule. You may proceed on your schedule. This, and all correspondence, should be included in the closure report to ensure inclusion in the project file.

JH

**Jocelyn Harimon** • Environmental Specialist  
Environmental Bureau  
EMNRD - Oil Conservation Division  
1220 South St. Francis Drive | Santa Fe, NM 87505  
(505)469-2821 | [Jocelyn.Harimon@emnrd.nm.gov](mailto:Jocelyn.Harimon@emnrd.nm.gov)  
<http://www.emnrd.nm.gov>



---

**From:** Kelly Lowery <klowery@ensolum.com>  
**Sent:** Wednesday, July 12, 2023 2:44 PM  
**To:** Enviro, OCD, EMNRD <OCD.Enviro@emnrd.nm.gov>  
**Cc:** Dunaway, Robert <rhodunaway@eprod.com>  
**Subject:** [EXTERNAL] South Eddy Cryo Plant (Incident ID #nAPP2316528547)

CAUTION: This email originated outside of our organization. Exercise caution prior to clicking on links or opening attachments.

Good afternoon,

On behalf of Enterprise Field Services, LLC, Ensolum, LLC would like to provide notification for sampling activities that will be conducted at the South Eddy Cryo Plant (nAPP2316528547) on Friday, July 14<sup>th</sup>. The samples may be used for closure, providing that they meet applicable closure limits.

Thank you



**Kelly Lowery, GIT**  
Project Geologist  
214-733-3165  
**Ensolum, LLC**



District I  
1625 N. French Dr., Hobbs, NM 88240  
District II  
811 S. First St., Artesia, NM 88210  
District III  
1000 Rio Brazos Road, Aztec, NM 87410  
District IV  
1220 S. St. Francis Dr., Santa Fe, NM 87505

State of New Mexico  
Energy Minerals and Natural  
Resources Department

Oil Conservation Division  
1220 South St. Francis Dr.  
Santa Fe, NM 87505

Form C-141  
Revised August 24, 2018  
Submit to appropriate OCD District office

Incident ID	
District RP	
Facility ID	
Application ID	

## Release Notification

### Responsible Party

Responsible Party	Enterprise Field Services LLC	OGRID	241602
Contact Name	Robert Dunaway	Contact Telephone	575-628-6802
Contact email	rhunaway@eprod.com	Incident # (assigned by OCD)	nAPP2316528547
Contact mailing address	PO Box 4324, Houston, TX 77210		

### Location of Release Source

Latitude 32.160411 Longitude -103.827911  
(NAD 83 in decimal degrees to 5 decimal places)

Site Name	South Eddy Cryo	Site Type	Gas Plant
Date Release Discovered	06/14/2023	API# (if applicable)	

Unit Letter	Section	Township	Range	County
H	01	25S	30E	Eddy

Surface Owner: ☐ State ☐ Federal ☐ Tribal ☒ Private (Name: Enterprise Field Services LLC)

### Nature and Volume of Release

Material(s) Released (Select all that apply and attach calculations or specific justification for the volumes provided below)

<input type="checkbox"/> Crude Oil	Volume Released (bbls)	Volume Recovered (bbls)
<input type="checkbox"/> Produced Water	Volume Released (bbls)	Volume Recovered (bbls)
	Is the concentration of dissolved chloride in the produced water >10,000 mg/l?	<input type="checkbox"/> Yes <input type="checkbox"/> No
<input checked="" type="checkbox"/> Condensate	Volume Released (bbls) 30	Volume Recovered (bbls) -0-
<input type="checkbox"/> Natural Gas	Volume Released (Mcf)	Volume Recovered (Mcf)
<input type="checkbox"/> Other (describe)	Volume/Weight Released (provide units)	Volume/Weight Recovered (provide units)

#### Cause of Release

Liquids from the flare knockout drafted to the flare, resulting in a fire.

## Oil Conservation Division

Incident ID	
District RP	
Facility ID	
Application ID	

Was this a major release as defined by 19.15.29.7(A) NMAC?

☒ Yes ☐ No

If YES, for what reason(s) does the responsible party consider this a major release?  
Fire

If YES, was immediate notice given to the OCD? By whom? To whom? When and by what means (phone, email, etc)?

Yes. Robert Dunaway. OCD website. 6/14/23 via NOR on the OCD website

### Initial Response

*The responsible party must undertake the following actions immediately unless they could create a safety hazard that would result in injury*

- ☒ The source of the release has been stopped.
- ☒ The impacted area has been secured to protect human health and the environment.
- ☒ Released materials have been contained via the use of berms or dikes, absorbent pads, or other containment devices.
- ☒ All free liquids and recoverable materials have been removed and managed appropriately.

If all the actions described above have not been undertaken, explain why:

Per 19.15.29.8 B. (4) NMAC the responsible party may commence remediation immediately after discovery of a release. If remediation has begun, please attach a narrative of actions to date. If remedial efforts have been successfully completed or if the release occurred within a lined containment area (see 19.15.29.11(A)(5)(a) NMAC), please attach all information needed for closure evaluation.

I hereby certify that the information given above is true and complete to the best of my knowledge and understand that pursuant to OCD rules and regulations all operators are required to report and/or file certain release notifications and perform corrective actions for releases which may endanger public health or the environment. The acceptance of a C-141 report by the OCD does not relieve the operator of liability should their operations have failed to adequately investigate and remediate contamination that pose a threat to groundwater, surface water, human health or the environment. In addition, OCD acceptance of a C-141 report does not relieve the operator of responsibility for compliance with any other federal, state, or local laws and/or regulations.

Printed Name: Robert Dunaway

Title: Senior Environmental Engineer

Signature: 

Date: 6/23/23

email: rdunaway@eprod.com

Telephone: 575-628-6802

#### OCD Only

Received by: Shelly Wells

Date: 6/23/2023

Condensate release was calculated by the difference in levels in the flare knockout.

**District I**  
1625 N. French Dr., Hobbs, NM 88240  
Phone:(575) 393-6161 Fax:(575) 393-0720  
**District II**  
811 S. First St., Artesia, NM 88210  
Phone:(575) 748-1283 Fax:(575) 748-9720  
**District III**  
1000 Rio Brazos Rd., Aztec, NM 87410  
Phone:(505) 334-6178 Fax:(505) 334-6170  
**District IV**  
1220 S. St Francis Dr., Santa Fe, NM 87505  
Phone:(505) 476-3470 Fax:(505) 476-3462

State of New Mexico  
Energy, Minerals and Natural Resources  
Oil Conservation Division  
1220 S. St Francis Dr.  
Santa Fe, NM 87505

CONDITIONS  
  
Action 232049

CONDITIONS

Operator: Enterprise Field Services, LLC PO Box 4324 Houston, TX 77210	OGRID: 241602
	Action Number: 232049
	Action Type: [C-141] Release Corrective Action (C-141)

CONDITIONS

Created By	Condition	Condition Date
scwells	None	6/23/2023



# OSE POD Locations Map



7/24/2023, 3:19:46 PM

GIS WATERS PODs

Active

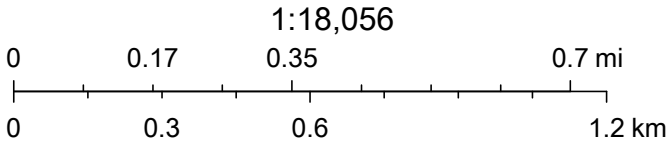
Pending

OSE District Boundary

New Mexico State Trust Lands

Both Estates

SiteBoundaries



Esri, HERE, iPC, U.S. Department of Energy Office of Legacy Management, Esri, HERE, Garmin, iPC, Maxar





*New Mexico Office of the State Engineer*  
**Water Right Summary**



get image list

**WR File Number:** C 03891

Subbasin: CUB

**Cross Reference:** -

**Primary Purpose:** MON MONITORING WELL

**Primary Status:** PMT PERMIT

**Total Acres:**

**Subfile:** -

**Header: -**


**Total Diversion:** 0

**Cause/Case:** -



**Owner:** ENTERPRISE FIELD SERVICES LLC

**Contact:** ED WATTENBARGER

## Documents on File

			Status			From/			
Trn #	Doc	File/Act	1	2	Transaction Desc.	To	Acres	Diversion	Consumptive
 <a href="#">get images</a>	<a href="#">571228</a>	<a href="#">EXPL</a>	<a href="#">2015-07-24</a>	PMT	LOG	C 03891 POD1	T	0	0

## Current Points of Diversion

POD Number	Well Tag	Source	Q						(NAD83 UTM in meters)		Other Location Desc
			64	Q16	Q4	Sec	Tw	Rng	X	Y	
<a href="#">C 03891 POD1</a>		Shallow	4	4	2	01	25S	30E	610608	3558890	 WELL 1
<a href="#">C 03891 POD2</a>			2	4	2	01	25S	30E	610607	3558967	 WELL 2

The data is furnished by the NMOSE/ISC and is accepted by the recipient with the expressed understanding that the OSE/ISC make no warranties, expressed or implied, concerning the accuracy, completeness, reliability, usability, or suitability for any particular purpose of the data.

7/24/23 2:04 PM

WATER RIGHT SUMMARY



# New Mexico Office of the State Engineer

## Point of Diversion Summary

(quarters are 1=NW 2=NE 3=SW 4=SE)  
(quarters are smallest to largest) (NAD83 UTM in meters)

Well Tag	POD Number	Q64	Q16	Q4	Sec	Tws	Rng	X	Y
C	03891 POD1	4	4	2	01	25S	30E	610608	3558890

x

<b>Driller License:</b>	1723	<b>Driller Company:</b>	SBQ2, LLC DBA STEWART BROTHERS DRILLING CO.	
<b>Driller Name:</b>				
<b>Drill Start Date:</b>	11/10/2015	<b>Drill Finish Date:</b>	11/14/2015	<b>Plug Date:</b>
<b>Log File Date:</b>	12/04/2015	<b>PCW Rev Date:</b>		<b>Source:</b> Shallow
<b>Pump Type:</b>		<b>Pipe Discharge Size:</b>		<b>Estimated Yield:</b> 33 GPM
<b>Casing Size:</b>	6.13	<b>Depth Well:</b>	635 feet	<b>Depth Water:</b> 429 feet

x

Water Bearing Stratifications:	Top	Bottom	Description
	420	450	Sandstone/Gravel/Conglomerate
	450	460	Sandstone/Gravel/Conglomerate
	460	490	Sandstone/Gravel/Conglomerate
	490	500	Sandstone/Gravel/Conglomerate
	500	530	Sandstone/Gravel/Conglomerate
	530	635	Sandstone/Gravel/Conglomerate

x

Casing Perforations:	Top	Bottom
	460	635

x

The data is furnished by the NMOSE/ISC and is accepted by the recipient with the expressed understanding that the OSE/ISC make no warranties, expressed or implied, concerning the accuracy, completeness, reliability, usability, or suitability for any particular purpose of the data.

7/24/23 2:14 PM


POINT OF DIVERSION SUMMARY





# New Mexico Office of the State Engineer

## Point of Diversion Summary

		(quarters are 1=NW 2=NE 3=SW 4=SE)						(NAD83 UTM in meters)	
		(quarters are smallest to largest)							
Well Tag	POD Number	Q64	Q16	Q4	Sec	Tws	Rng	X	Y
C	03891 POD2	2	4	2	01	25S	30E	610607	3558967 
x									
Driller License:					Driller Company:				
Driller Name:									
Drill Start Date:					Drill Finish Date:			Plug Date:	
Log File Date:					PCW Rev Date:			Source:	
Pump Type:					Pipe Discharge Size:			Estimated Yield:	
Casing Size:					Depth Well:			Depth Water:	
x									

The data is furnished by the NMOSE/ISC and is accepted by the recipient with the expressed understanding that the OSE/ISC make no warranties, expressed or implied, concerning the accuracy, completeness, reliability, usability, or suitability for any particular purpose of the data.

7/24/23 2:13 PM POINT OF DIVERSION SUMMARY

## NM Property/Surface Owners



7/24/2023, 3:29:24 PM

## Mineral Ownership

P

 A-All minerals are owned by U.S.

PLSS Second Division

☐ N-No minerals are owned by the U.S.

PLSS First Division

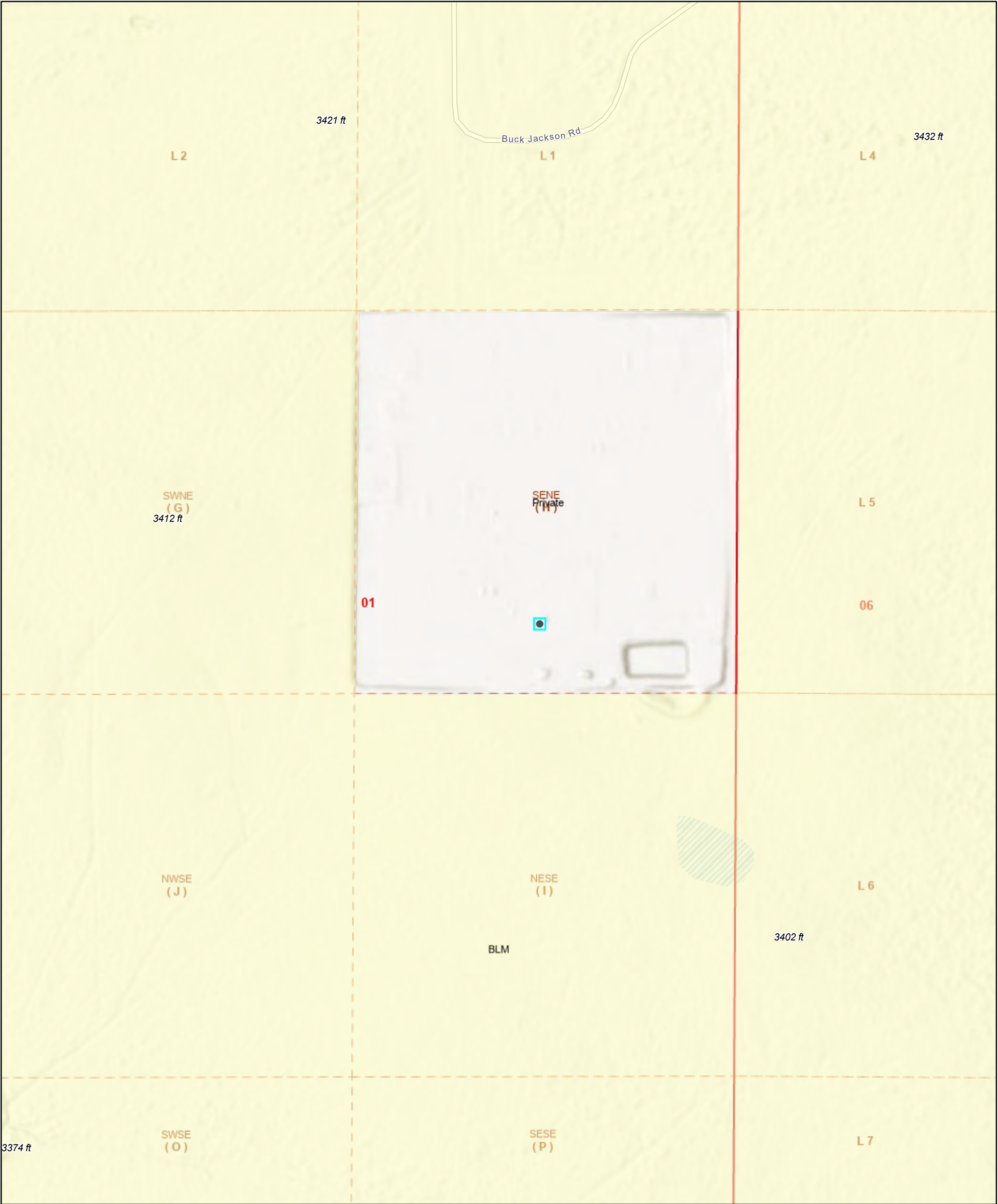
## Land Ownership

 BLM

U.S. BLM, Oil Conservation Division of the New Mexico  
Energy, Minerals and Natural Resources Department.,  
OCD, Esri, HERE, Garmin, iPC, Maxar, BLM



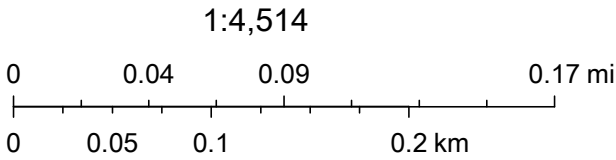
# Active Mines in New Mexico



7/24/2023, 3:31:18 PM

Land Ownership

- BLM
- P
- PLSS Second Division
- PLSS First Division



U.S. BLM, Esri Community Maps Contributors, Texas Parks & Wildlife, © OpenStreetMap, Microsoft, CONANP, Esri, HERE, Garmin, SafeGraph, GeoTechnologies, Inc, METI/ NASA, USGS, EPA, NPS, US Census Bureau, USDA,





# Karst Potential Map


South Eddy Flare Fire


Released to Imaging: 2/19/2024 11:50:13 AM

Legend

 32.160411, -103.827911

 High

 Low

 Medium

Received by OCD: 2/8/2024 10:08:19 AM



Jo Bar Tank



# National Flood Hazard Layer FIRMette



103°49'59"W 32°9'53"N



1:6,000

103°49'22"W 32°9'22"N

## Legend

SEE FIS REPORT FOR DETAILED LEGEND AND INDEX MAP FOR FIRM PANEL LAYOUT

SPECIAL FLOOD HAZARD AREAS		Without Base Flood Elevation (BFE) Zone A, V, A99
		With BFE or Depth Zone AE, AO, AH, VE, AR
		Regulatory Floodway
OTHER AREAS OF FLOOD HAZARD		0.2% Annual Chance Flood Hazard, Areas of 1% annual chance flood with average depth less than one foot or with drainage areas of less than one square mile Zone X
		Future Conditions 1% Annual Chance Flood Hazard Zone X
		Area with Reduced Flood Risk due to Levee. See Notes. Zone X
		Area with Flood Risk due to Levee Zone D
OTHER AREAS		NO SCREEN Area of Minimal Flood Hazard Zone X
		Effective LOMRs
		Area of Undetermined Flood Hazard Zone D
GENERAL STRUCTURES		Channel, Culvert, or Storm Sewer
		Levee, Dike, or Floodwall
OTHER FEATURES		20.2 Cross Sections with 1% Annual Chance Water Surface Elevation
		17.5 Coastal Transect
		Base Flood Elevation Line (BFE)
		Limit of Study
		Jurisdiction Boundary
		Coastal Transect Baseline
		Profile Baseline
MAP PANELS		Digital Data Available
		No Digital Data Available
		Unmapped



The pin displayed on the map is an approximate point selected by the user and does not represent an authoritative property location.

This map complies with FEMA's standards for the use of digital flood maps if it is not void as described below. The basemap shown complies with FEMA's basemap accuracy standards

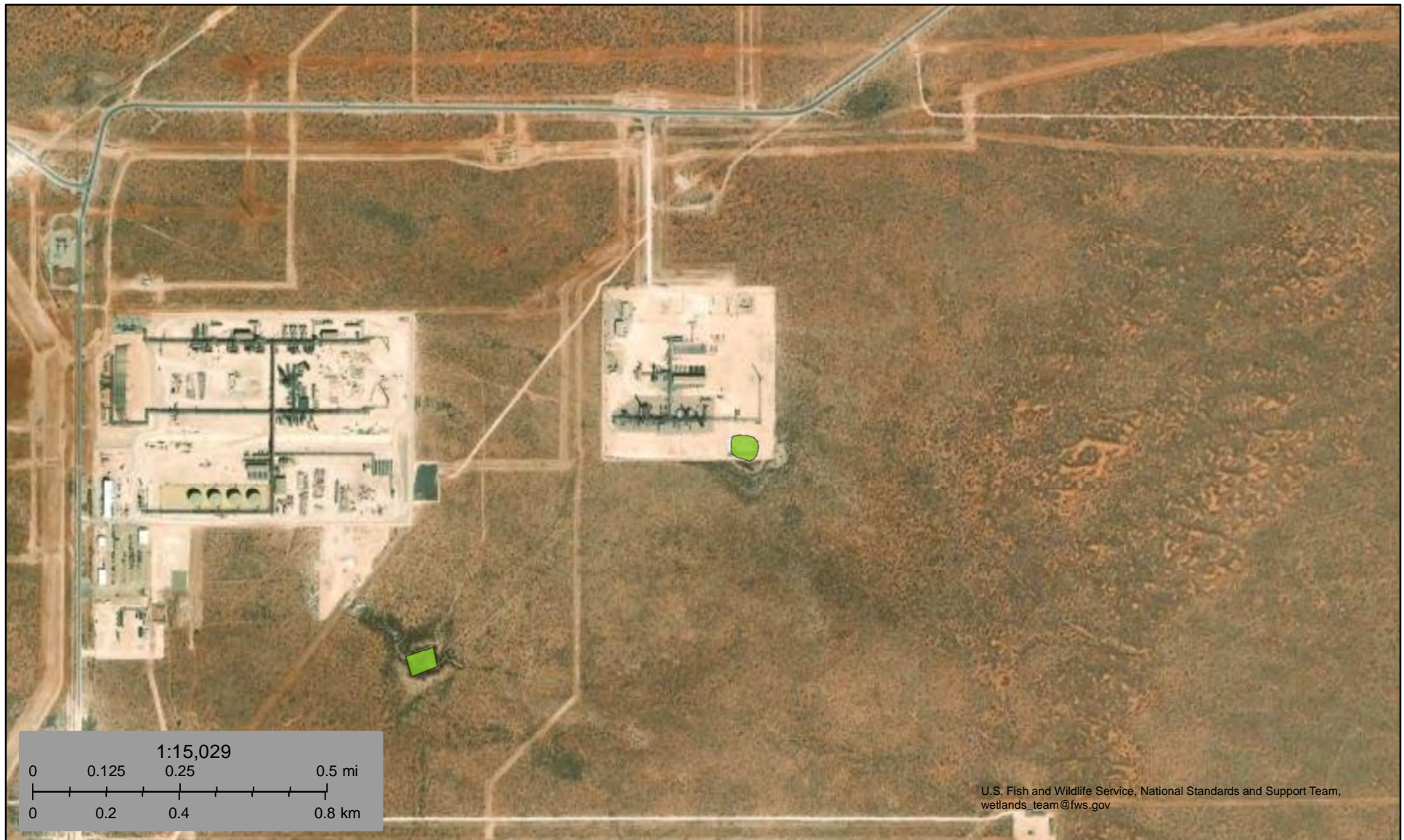
The flood hazard information is derived directly from the authoritative NFHL web services provided by FEMA. This map was exported on 7/24/2023 at 4:40 PM and does not reflect changes or amendments subsequent to this date and time. The NFHL and effective information may change or become superseded by new data over time.

This map image is void if the one or more of the following map elements do not appear: basemap imagery, flood zone labels, legend, scale bar, map creation date, community identifiers, FIRM panel number, and FIRM effective date. Map images for unmapped and unmodernized areas cannot be used for regulatory purposes.





## NWI Wetland Map



July 24, 2023

**Wetlands**

- Estuarine and Marine Deepwater
- Estuarine and Marine Wetland

- Freshwater Emergent Wetland
- Freshwater Forested/Shrub Wetland
- Freshwater Pond

- Lake
- Other
- Riverine

This map is for general reference only. The US Fish and Wildlife Service is not responsible for the accuracy or currentness of the base data shown on this map. All wetlands related data should be used in accordance with the layer metadata found on the Wetlands Mapper web site.



## APPENDIX C

### Photographic Documentation

---





View of extent of impact during initial sampling activities, facing south.



View of extent of impact on BLM land during initial sampling activities, facing south.



View of extent of impact during delineation sampling activities, facing northeast.



## APPENDIX D

Table

---

**TABLE 1**  
**SOIL SAMPLE ANALYTICAL RESULTS**

South Eddy Flare Fire  
Enterprise Field Services, LLC  
Eddy County, New Mexico  
Ensolum Project No. 03B1226287

Sample Designation	Date	Depth (feet bgs)	Benzene (mg/kg)	Toluene (mg/kg)	Ethylbenzene (mg/kg)	Total Xylenes (mg/kg)	Total BTEX (mg/kg)	TPH GRO (mg/kg)	TPH DRO (mg/kg)	TPH MRO (mg/kg)	Total TPH (GRO+DRO+MRO) (mg/kg)	Chloride (mg/kg)
New Mexico Oil Conservation Division Closure Criteria for Soils Impacted by a Release (≤ 50 feet)			10	NE	NE	NE	50	NE	NE	NE	100	600
Confirmation Flare Fire Extent Surface Sample Analytical Results												
SS 01	06/28/2023	0.25	<0.050	<0.050	<0.050	<0.150	<0.300	<10.0	<10.0	<10.0	<10.0	240
SS 02	06/28/2023	0.25	<0.050	<0.050	<0.050	<0.150	<0.300	<10.0	<10.0	<10.0	<10.0	384
SS 03	06/28/2023	0.25	<0.050	<0.050	<0.050	<0.150	<0.300	<10.0	<10.0	<10.0	<10.0	224
SS 04	06/28/2023	0.25	<0.050	0.122	<0.050	<0.150	<0.300	<10.0	<10.0	<10.0	<10.0	<16.0
SS 05	06/28/2023	0.25	<0.050	0.068	<0.050	<0.150	<0.300	<10.0	<10.0	<10.0	<10.0	<16.0
SS 06	06/28/2023	0.25	<0.050	<0.050	<0.050	<0.150	<0.300	<10.0	<10.0	<10.0	<10.0	48.0
Confirmation Delineation Soil Sample Analytical Results												
N-1	07/14/2023	0.25	<0.050	<0.050	<0.050	<0.150	<0.300	<10.0	<10.0	<10.0	<10.0	32.0
N-2	07/14/2023	0.25	<0.050	<0.050	<0.050	<0.150	<0.300	<10.0	<10.0	<10.0	<10.0	144
N-3	07/14/2023	0.25	<0.050	<0.050	<0.050	<0.150	<0.300	<10.0	<10.0	<10.0	<10.0	32.0
E-1	07/14/2023	0.25	<0.050	<0.050	<0.050	<0.150	<0.300	<10.0	<10.0	<10.0	<10.0	80.0
E-2	07/14/2023	0.25	<0.050	<0.050	<0.050	<0.150	<0.300	<10.0	<10.0	<10.0	<10.0	48.0
E-3	07/14/2023	0.25	<0.050	<0.050	<0.050	<0.150	<0.300	<10.0	<10.0	<10.0	<10.0	16.0
W-1	07/14/2023	0.25	<0.050	<0.050	<0.050	<0.150	<0.300	<10.0	<10.0	<10.0	<10.0	96.0
W-2	07/14/2023	0.25	<0.050	<0.050	<0.050	<0.150	<0.300	<10.0	<10.0	<10.0	<10.0	80.0
W-3	07/14/2023	0.25	<0.050	<0.050	<0.050	<0.150	<0.300	<10.0	<10.0	<10.0	<10.0	<16.0
S-1	07/14/2023	0.25	<0.050	<0.050	<0.050	<0.150	<0.300	<10.0	<10.0	<10.0	<10.0	96.0
S-2	07/14/2023	0.25	<0.050	<0.050	<0.050	<0.150	<0.300	<10.0	<10.0	<10.0	<10.0	128
S-3	07/14/2023	0.25	<0.050	<0.050	<0.050	<0.150	<0.300	<10.0	<10.0	<10.0	<10.0	<16.0

bgs - below ground surface

mg/kg - milligrams per kilogram

NA - Not Applicable

NE - Not Established

BTEX - Benzene, Toluene, Ethylbenzene, and Xylenes

GRO - Gasoline Range Organics

DRO - Diesel Range Organics

MRO - Motor Oil/Lube Oil Range Organics

TPH - Total Petroleum Hydrocarbon



## APPENDIX E

### Laboratory Analytical Reports & Chain-of-Custody Documentation

---



PHONE (575) 393-2326 ° 101 E. MARLAND ° HOBBS, NM 88240

---

July 03, 2023

KELLY LOWERY

ENSOLUM

3122 NATIONAL PARKS HWY

CARLSBAD, NM 88220

RE: SOUTH EDDY FLARE FIRE

Enclosed are the results of analyses for samples received by the laboratory on 06/28/23 16:10.

Cardinal Laboratories is accredited through Texas NELAP under certificate number T104704398-22-15. Accreditation applies to drinking water, non-potable water and solid and chemical materials. All accredited analytes are denoted by an asterisk (\*). For a complete list of accredited analytes and matrices visit the TCEQ website at [www.tceq.texas.gov/field/qa/lab\\_accred\\_certif.html](http://www.tceq.texas.gov/field/qa/lab_accred_certif.html).

Cardinal Laboratories is accredited through the State of Colorado Department of Public Health and Environment for:

Method EPA 552.2	Haloacetic Acids (HAA-5)
Method EPA 524.2	Total Trihalomethanes (TTHM)
Method EPA 524.4	Regulated VOCs (V1, V2, V3)

Accreditation applies to public drinking water matrices.

This report meets NELAP requirements and is made up of a cover page, analytical results, and a copy of the original chain-of-custody. If you have any questions concerning this report, please feel free to contact me.

Sincerely,

A handwritten signature in black ink that reads "Celey D. Keene". The signature is fluid and cursive, with the first letters of the first and last names being capitalized and prominent.

Celey D. Keene

Lab Director/Quality Manager





PHONE (575) 393-2326 ° 101 E. MARLAND ° HOBBS, NM 88240

**Analytical Results For:**

ENSOLUM  
 KELLY LOWERY  
 3122 NATIONAL PARKS HWY  
 CARLSBAD NM, 88220  
 Fax To:

Received: 06/28/2023  
 Reported: 07/03/2023  
 Project Name: SOUTH EDDY FLARE FIRE  
 Project Number: 03B1226287  
 Project Location: ENTERPRISE 32.163497,-103.828869

Sampling Date: 06/28/2023  
 Sampling Type: Soil  
 Sampling Condition: Cool & Intact  
 Sample Received By: Tamara Oldaker

**Sample ID: SS 01 @ .25 (H233353-01)**

BTX 8021B			mg/kg		Analyzed By: MS					
Analyte	Result	Reporting Limit	Analyzed	Method Blank	BS	% Recovery	True Value QC	RPD	Qualifier	
Benzene*	<0.050	0.050	06/29/2023	ND	1.99	99.3	2.00	2.17		
Toluene*	<0.050	0.050	06/29/2023	ND	1.95	97.7	2.00	2.00		
Ethylbenzene*	<0.050	0.050	06/29/2023	ND	1.91	95.4	2.00	1.47	QM-07	
Total Xylenes*	<0.150	0.150	06/29/2023	ND	5.80	96.6	6.00	1.52	QM-07	
Total BTX	<0.300	0.300	06/29/2023	ND						

Surrogate: 4-Bromofluorobenzene (PID) 103 % 71.5-134

Chloride, SM4500Cl-B		mg/kg		Analyzed By: AC					
Analyte	Result	Reporting Limit	Analyzed	Method Blank	BS	% Recovery	True Value QC	RPD	Qualifier
Chloride	240	16.0	06/29/2023	ND	416	104	400	0.00	

TPH 8015M		mg/kg		Analyzed By: MS					
Analyte	Result	Reporting Limit	Analyzed	Method Blank	BS	% Recovery	True Value QC	RPD	Qualifier
GRO C6-C10*	<10.0	10.0	06/29/2023	ND	164	82.1	200	3.17	
DRO >C10-C28*	<10.0	10.0	06/29/2023	ND	169	84.3	200	4.15	
EXT DRO >C28-C36	<10.0	10.0	06/29/2023	ND					

Surrogate: 1-Chlorooctane 75.1 % 48.2-134

Surrogate: 1-Chlorooctadecane 64.0 % 49.1-148

Cardinal Laboratories

\*=Accredited Analyte

PLEASE NOTE: Liability and Damages. Cardinal's liability and client's exclusive remedy for any claim arising, whether based in contract or tort, shall be limited to the amount paid by client for analyses. All claims, including those for negligence and any other cause whatsoever shall be deemed waived unless made in writing and received by Cardinal within thirty (30) days after completion of the applicable service. In no event shall Cardinal be liable for incidental or consequential damages, including, without limitation, business interruptions, loss of use, or loss of profits incurred by client, its subsidiaries, affiliates or successors arising out of or related to the performance of the services hereunder by Cardinal, regardless of whether such claim is based upon any of the above stated reasons or otherwise. Results relate only to the samples identified above. This report shall not be reproduced except in full with written approval of Cardinal Laboratories.

Celey D. Keene, Lab Director/Quality Manager





PHONE (575) 393-2326 ° 101 E. MARLAND ° HOBBS, NM 88240

**Analytical Results For:**

ENSOLUM  
KELLY LOWERY  
3122 NATIONAL PARKS HWY  
CARLSBAD NM, 88220  
Fax To:

Received: 06/28/2023  
Reported: 07/03/2023  
Project Name: SOUTH EDDY FLARE FIRE  
Project Number: 03B1226287  
Project Location: ENTERPRISE 32.163497,-103.828869

Sampling Date: 06/28/2023  
Sampling Type: Soil  
Sampling Condition: Cool & Intact  
Sample Received By: Tamara Oldaker

**Sample ID: SS 02 @ .25 (H233353-02)**

BTEx 8021B		mg/kg		Analyzed By: MS						
Analyte	Result	Reporting Limit	Analyzed	Method Blank	BS	% Recovery	True Value QC	RPD	Qualifier	
Benzene*	<0.050	0.050	06/29/2023	ND	1.99	99.3	2.00	2.17		
Toluene*	<0.050	0.050	06/29/2023	ND	1.95	97.7	2.00	2.00		
Ethylbenzene*	<0.050	0.050	06/29/2023	ND	1.91	95.4	2.00	1.47		
Total Xylenes*	<0.150	0.150	06/29/2023	ND	5.80	96.6	6.00	1.52		
Total BTEx	<0.300	0.300	06/29/2023	ND						

Surrogate: 4-Bromofluorobenzene (PID) 103 % 71.5-134

Chloride, SM4500Cl-B		mg/kg		Analyzed By: AC						
Analyte	Result	Reporting Limit	Analyzed	Method Blank	BS	% Recovery	True Value QC	RPD	Qualifier	
Chloride	384	16.0	06/29/2023	ND	384	96.0	400	8.00		

TPH 8015M		mg/kg		Analyzed By: MS					
Analyte	Result	Reporting Limit	Analyzed	Method Blank	BS	% Recovery	True Value QC	RPD	Qualifier
GRO C6-C10*	<10.0	10.0	06/29/2023	ND	164	82.1	200	3.17	
DRO >C10-C28*	<10.0	10.0	06/29/2023	ND	169	84.3	200	4.15	
EXT DRO >C28-C36	<10.0	10.0	06/29/2023	ND					

Surrogate: 1-Chlorooctane 75.5 % 48.2-134

Surrogate: 1-Chlorooctadecane 63.0 % 49.1-148

Cardinal Laboratories

\*=Accredited Analyte

PLEASE NOTE: Liability and Damages. Cardinal's liability and client's exclusive remedy for any claim arising, whether based in contract or tort, shall be limited to the amount paid by client for analyses. All claims, including those for negligence and any other cause whatsoever shall be deemed waived unless made in writing and received by Cardinal within thirty (30) days after completion of the applicable service. In no event shall Cardinal be liable for incidental or consequential damages, including, without limitation, business interruptions, loss of use, or loss of profits incurred by client, its subsidiaries, affiliates or successors arising out of or related to the performance of the services hereunder by Cardinal, regardless of whether such claim is based upon any of the above stated reasons or otherwise. Results relate only to the samples identified above. This report shall not be reproduced except in full with written approval of Cardinal Laboratories.

Celey D. Keene, Lab Director/Quality Manager



PHONE (575) 393-2326 ° 101 E. MARLAND ° HOBBS, NM 88240

**Analytical Results For:**

ENSOLUM  
KELLY LOWERY  
3122 NATIONAL PARKS HWY  
CARLSBAD NM, 88220  
Fax To:

Received: 06/28/2023  
Reported: 07/03/2023  
Project Name: SOUTH EDDY FLARE FIRE  
Project Number: 03B1226287  
Project Location: ENTERPRISE 32.163497,-103.828869

Sampling Date: 06/28/2023  
Sampling Type: Soil  
Sampling Condition: Cool & Intact  
Sample Received By: Tamara Oldaker

**Sample ID: SS 03 @ .25 (H233353-03)**

BTEx 8021B		mg/kg		Analyzed By: MS					
Analyte	Result	Reporting Limit	Analyzed	Method Blank	BS	% Recovery	True Value QC	RPD	Qualifier
Benzene*	<0.050	0.050	06/29/2023	ND	1.99	99.3	2.00	2.17	
Toluene*	<0.050	0.050	06/29/2023	ND	1.95	97.7	2.00	2.00	
Ethylbenzene*	<0.050	0.050	06/29/2023	ND	1.91	95.4	2.00	1.47	
Total Xylenes*	<0.150	0.150	06/29/2023	ND	5.80	96.6	6.00	1.52	
Total BTEX	<0.300	0.300	06/29/2023	ND					

Surrogate: 4-Bromofluorobenzene (PID) 103 % 71.5-134

Chloride, SM4500Cl-B		mg/kg		Analyzed By: AC					
Analyte	Result	Reporting Limit	Analyzed	Method Blank	BS	% Recovery	True Value QC	RPD	Qualifier
Chloride	224	16.0	06/29/2023	ND	384	96.0	400	8.00	

TPH 8015M		mg/kg		Analyzed By: MS					
Analyte	Result	Reporting Limit	Analyzed	Method Blank	BS	% Recovery	True Value QC	RPD	Qualifier
GRO C6-C10*	<10.0	10.0	06/29/2023	ND	164	82.1	200	3.17	
DRO >C10-C28*	<10.0	10.0	06/29/2023	ND	169	84.3	200	4.15	
EXT DRO >C28-C36	<10.0	10.0	06/29/2023	ND					

Surrogate: 1-Chlorooctane 75.6 % 48.2-134

Surrogate: 1-Chlorooctadecane 71.1 % 49.1-148

Cardinal Laboratories

\*=Accredited Analyte

PLEASE NOTE: Liability and Damages. Cardinal's liability and client's exclusive remedy for any claim arising, whether based in contract or tort, shall be limited to the amount paid by client for analyses. All claims, including those for negligence and any other cause whatsoever shall be deemed waived unless made in writing and received by Cardinal within thirty (30) days after completion of the applicable service. In no event shall Cardinal be liable for incidental or consequential damages, including, without limitation, business interruptions, loss of use, or loss of profits incurred by client, its subsidiaries, affiliates or successors arising out of or related to the performance of the services hereunder by Cardinal, regardless of whether such claim is based upon any of the above stated reasons or otherwise. Results relate only to the samples identified above. This report shall not be reproduced except in full with written approval of Cardinal Laboratories.

Celey D. Keene, Lab Director/Quality Manager



PHONE (575) 393-2326 ° 101 E. MARLAND ° HOBBS, NM 88240

**Analytical Results For:**

ENSOLUM  
KELLY LOWERY  
3122 NATIONAL PARKS HWY  
CARLSBAD NM, 88220  
Fax To:

Received: 06/28/2023  
Reported: 07/03/2023  
Project Name: SOUTH EDDY FLARE FIRE  
Project Number: 03B1226287  
Project Location: ENTERPRISE 32.163497,-103.828869

Sampling Date: 06/28/2023  
Sampling Type: Soil  
Sampling Condition: Cool & Intact  
Sample Received By: Tamara Oldaker

**Sample ID: SS 04 @ .25 (H233353-04)**

BTEx 8021B		mg/kg		Analyzed By: MS						
Analyte	Result	Reporting Limit	Analyzed	Method Blank	BS	% Recovery	True Value QC	RPD	Qualifier	
Benzene*	<0.050	0.050	06/29/2023	ND	1.99	99.3	2.00	2.17		
Toluene*	0.122	0.050	06/29/2023	ND	1.95	97.7	2.00	2.00		
Ethylbenzene*	<0.050	0.050	06/29/2023	ND	1.91	95.4	2.00	1.47		
Total Xylenes*	<0.150	0.150	06/29/2023	ND	5.80	96.6	6.00	1.52		
Total BTEx	<0.300	0.300	06/29/2023	ND						

Surrogate: 4-Bromofluorobenzene (PID) 102 % 71.5-134

Chloride, SM4500CI-B		mg/kg		Analyzed By: AC						
Analyte	Result	Reporting Limit	Analyzed	Method Blank	BS	% Recovery	True Value QC	RPD	Qualifier	
Chloride	<16.0	16.0	06/29/2023	ND	384	96.0	400	8.00		

TPH 8015M		mg/kg		Analyzed By: MS					
Analyte	Result	Reporting Limit	Analyzed	Method Blank	BS	% Recovery	True Value QC	RPD	Qualifier
GRO C6-C10*	<10.0	10.0	06/29/2023	ND	164	82.1	200	3.17	
DRO >C10-C28*	<10.0	10.0	06/29/2023	ND	169	84.3	200	4.15	
EXT DRO >C28-C36	<10.0	10.0	06/29/2023	ND					

Surrogate: 1-Chlorooctane 85.2 % 48.2-134

Surrogate: 1-Chlorooctadecane 87.9 % 49.1-148

Cardinal Laboratories

\*=Accredited Analyte

PLEASE NOTE: Liability and Damages. Cardinal's liability and client's exclusive remedy for any claim arising, whether based in contract or tort, shall be limited to the amount paid by client for analyses. All claims, including those for negligence and any other cause whatsoever shall be deemed waived unless made in writing and received by Cardinal within thirty (30) days after completion of the applicable service. In no event shall Cardinal be liable for incidental or consequential damages, including, without limitation, business interruptions, loss of use, or loss of profits incurred by client, its subsidiaries, affiliates or successors arising out of or related to the performance of the services hereunder by Cardinal, regardless of whether such claim is based upon any of the above stated reasons or otherwise. Results relate only to the samples identified above. This report shall not be reproduced except in full with written approval of Cardinal Laboratories.

Celey D. Keene, Lab Director/Quality Manager



PHONE (575) 393-2326 ° 101 E. MARLAND ° HOBBS, NM 88240

**Analytical Results For:**

ENSOLUM  
 KELLY LOWERY  
 3122 NATIONAL PARKS HWY  
 CARLSBAD NM, 88220  
 Fax To:

Received: 06/28/2023  
 Reported: 07/03/2023  
 Project Name: SOUTH EDDY FLARE FIRE  
 Project Number: 03B1226287  
 Project Location: ENTERPRISE 32.163497,-103.828869

Sampling Date: 06/28/2023  
 Sampling Type: Soil  
 Sampling Condition: Cool & Intact  
 Sample Received By: Tamara Oldaker

**Sample ID: SS 05 @ .25 (H233353-05)**

BTEx 8021B		mg/kg		Analyzed By: MS						
Analyte	Result	Reporting Limit	Analyzed	Method Blank	BS	% Recovery	True Value QC	RPD	Qualifier	
Benzene*	<0.050	0.050	06/29/2023	ND	1.99	99.3	2.00	2.17		
Toluene*	0.068	0.050	06/29/2023	ND	1.95	97.7	2.00	2.00		
Ethylbenzene*	<0.050	0.050	06/29/2023	ND	1.91	95.4	2.00	1.47		
Total Xylenes*	<0.150	0.150	06/29/2023	ND	5.80	96.6	6.00	1.52		
Total BTEx	<0.300	0.300	06/29/2023	ND						

Surrogate: 4-Bromofluorobenzene (PID) 102 % 71.5-134

Chloride, SM4500CI-B		mg/kg		Analyzed By: AC						
Analyte	Result	Reporting Limit	Analyzed	Method Blank	BS	% Recovery	True Value QC	RPD	Qualifier	
Chloride	<16.0	16.0	06/29/2023	ND	384	96.0	400	8.00		

TPH 8015M		mg/kg		Analyzed By: MS					
Analyte	Result	Reporting Limit	Analyzed	Method Blank	BS	% Recovery	True Value QC	RPD	Qualifier
GRO C6-C10*	<10.0	10.0	06/29/2023	ND	164	82.1	200	3.17	
DRO >C10-C28*	<10.0	10.0	06/29/2023	ND	169	84.3	200	4.15	
EXT DRO >C28-C36	<10.0	10.0	06/29/2023	ND					

Surrogate: 1-Chlorooctane 85.8 % 48.2-134

Surrogate: 1-Chlorooctadecane 88.9 % 49.1-148

Cardinal Laboratories

\*=Accredited Analyte

PLEASE NOTE: Liability and Damages. Cardinal's liability and client's exclusive remedy for any claim arising, whether based in contract or tort, shall be limited to the amount paid by client for analyses. All claims, including those for negligence and any other cause whatsoever shall be deemed waived unless made in writing and received by Cardinal within thirty (30) days after completion of the applicable service. In no event shall Cardinal be liable for incidental or consequential damages, including, without limitation, business interruptions, loss of use, or loss of profits incurred by client, its subsidiaries, affiliates or successors arising out of or related to the performance of the services hereunder by Cardinal, regardless of whether such claim is based upon any of the above stated reasons or otherwise. Results relate only to the samples identified above. This report shall not be reproduced except in full with written approval of Cardinal Laboratories.

Celey D. Keene, Lab Director/Quality Manager



PHONE (575) 393-2326 ° 101 E. MARLAND ° HOBBS, NM 88240

**Analytical Results For:**

ENSOLUM  
KELLY LOWERY  
3122 NATIONAL PARKS HWY  
CARLSBAD NM, 88220  
Fax To:

Received: 06/28/2023  
Reported: 07/03/2023  
Project Name: SOUTH EDDY FLARE FIRE  
Project Number: 03B1226287  
Project Location: ENTERPRISE 32.163497,-103.828869

Sampling Date: 06/28/2023  
Sampling Type: Soil  
Sampling Condition: Cool & Intact  
Sample Received By: Tamara Oldaker

**Sample ID: SS 06 @ .25 (H233353-06)**

BTEx 8021B		mg/kg		Analyzed By: MS					
Analyte	Result	Reporting Limit	Analyzed	Method Blank	BS	% Recovery	True Value QC	RPD	Qualifier
Benzene*	<0.050	0.050	06/29/2023	ND	1.99	99.3	2.00	2.17	
Toluene*	<0.050	0.050	06/29/2023	ND	1.95	97.7	2.00	2.00	
Ethylbenzene*	<0.050	0.050	06/29/2023	ND	1.91	95.4	2.00	1.47	
Total Xylenes*	<0.150	0.150	06/29/2023	ND	5.80	96.6	6.00	1.52	
Total BTEX	<0.300	0.300	06/29/2023	ND					

Surrogate: 4-Bromofluorobenzene (PID) 103 % 71.5-134

Chloride, SM4500Cl-B		mg/kg		Analyzed By: AC						
Analyte	Result	Reporting Limit	Analyzed	Method Blank	BS	% Recovery	True Value QC	RPD	Qualifier	
Chloride	48.0	16.0	06/29/2023	ND	384	96.0	400	8.00		

TPH 8015M		mg/kg		Analyzed By: MS					
Analyte	Result	Reporting Limit	Analyzed	Method Blank	BS	% Recovery	True Value QC	RPD	Qualifier
GRO C6-C10*	<10.0	10.0	06/29/2023	ND	164	82.1	200	3.17	
DRO >C10-C28*	<10.0	10.0	06/29/2023	ND	169	84.3	200	4.15	
EXT DRO >C28-C36	<10.0	10.0	06/29/2023	ND					

Surrogate: 1-Chlorooctane 101 % 48.2-134

Surrogate: 1-Chlorooctadecane 114 % 49.1-148

Cardinal Laboratories

\*=Accredited Analyte

PLEASE NOTE: Liability and Damages. Cardinal's liability and client's exclusive remedy for any claim arising, whether based in contract or tort, shall be limited to the amount paid by client for analyses. All claims, including those for negligence and any other cause whatsoever shall be deemed waived unless made in writing and received by Cardinal within thirty (30) days after completion of the applicable service. In no event shall Cardinal be liable for incidental or consequential damages, including, without limitation, business interruptions, loss of use, or loss of profits incurred by client, its subsidiaries, affiliates or successors arising out of or related to the performance of the services hereunder by Cardinal, regardless of whether such claim is based upon any of the above stated reasons or otherwise. Results relate only to the samples identified above. This report shall not be reproduced except in full with written approval of Cardinal Laboratories.

Celey D. Keene, Lab Director/Quality Manager





PHONE (575) 393-2326 ° 101 E. MARLAND ° HOBBS, NM 88240

Notes and Definitions

- QM-07      The spike recovery was outside acceptance limits for the MS and/or MSD. The batch was accepted based on acceptable LCS recovery.
- ND      Analyte NOT DETECTED at or above the reporting limit
- RPD      Relative Percent Difference
- \*\*      Samples not received at proper temperature of 6°C or below.
- \*\*\*      Insufficient time to reach temperature.
- Chloride by SM4500Cl-B does not require samples be received at or below 6°C  
Samples reported on an as received basis (wet) unless otherwise noted on report

Cardinal Laboratories

\*=Accredited Analyte

PLEASE NOTE: Liability and Damages. Cardinal's liability and client's exclusive remedy for any claim arising, whether based in contract or tort, shall be limited to the amount paid by client for analyses. All claims, including those for negligence and any other cause whatsoever shall be deemed waived unless made in writing and received by Cardinal within thirty (30) days after completion of the applicable service. In no event shall Cardinal be liable for incidental or consequential damages, including, without limitation, business interruptions, loss of use, or loss of profits incurred by client, its subsidiaries, affiliates or successors arising out of or related to the performance of the services hereunder by Cardinal, regardless of whether such claim is based upon any of the above stated reasons or otherwise. Results relate only to the samples identified above. This report shall not be reproduced except in full with written approval of Cardinal Laboratories.

A handwritten signature in black ink, appearing to read "Celey D. Keene".

Celey D. Keene, Lab Director/Quality Manager

CHAIN-OF-CUSTODY AND ANALYSIS REQUEST

<b>Company Name:</b> ENSOLUM LLC <b>Project Manager:</b> KELLY LOUBEY <b>Address:</b> 8122 North Parts Hwy <b>City:</b> Cartersburg <b>State:</b> Wm Zip: 26822 <b>Phone #:</b> 214-733-3165 <b>Fax #:</b> <b>Project #:</b> 03B026287 <b>Project Owner:</b> Enterprise <b>Project Name:</b> South Paddy Flare Fine <b>Project Location:</b> (32.163491 -108.828869) <b>Sampler Name:</b> Julianne Falcone										<b>BILL TO</b> <b>P.O. #:</b> RD2121 <b>Company:</b> Enterprise Field Services LLC <b>Attn:</b> Robert Duranney <b>Address:</b> 3005 E Green <b>City:</b> Cartersburg <b>State:</b> Wm Zip: 26822 <b>Phone #:</b> 814-85-0990 <b>Fax #:</b> 814-85-0990										<b>ANALYSIS REQUEST</b>																													
<b>FOR LAB USE ONLY</b> <b>Lab I.D.</b> <b>Sample I.D.</b>										<b>MATRIX</b> (G)RAB OR (C)OMP # CONTAINERS GROUNDWATER WASTEWATER SOIL OIL SLUDGE OTHER :										<b>PRESERV.</b> ACID/BASE: ICE / COOL OTHER :										<b>SAMPLING</b> DATE TIME										BTEX 8021B TPH 8015M Chlorides 4500									
1 5501 0.25 2 5502 0.25 3 5503 0.25 4 5504 0.25 5 5505 0.25 6 5506 0.25										G 1 1 X 1 1 1										X X X X X X										06/28/23 10410 1045 1050 1055 1100 1105										X X X X X X									
<b>PLEASE NOTE:</b> Liability and Damages. Cardinal's liability and client's exclusive remedy for any claim arising whether based in contract or tort, shall be limited to the amount paid by the client for the analyses. All claims including those for negligence and any other cause whatsoever shall be deemed waived unless made in writing and received by Cardinal within 30 days after completion of the applicable service. In no event shall Cardinal be liable for incidental or consequential damages, including without limitation, business interruptions, loss of use, or loss of profits incurred by client, its subsidiaries, affiliates, or successors arising out of or from, 1) the performance of services hereunder by Cardinal, regardless of whether such claim is based upon any of the above, 2) third parties or otherwise.										<b>Relinquished By:</b> Date: 6-28-23 Time: 1610 <b>Received By:</b> Julianne Falcone <b>Relinquished By:</b> Date: _____ Time: _____ <b>Received By:</b>										<b>Verbal Result:</b> <input type="checkbox"/> Yes <input checked="" type="checkbox"/> No <b>Add'l Phone #:</b> All Results are emailed. Please provide Email address: julianne@ensolum.com <b>REMARKS:</b>										<b>Turnaround Time:</b> _____ <b>Standard:</b> <input checked="" type="checkbox"/> <b>Rush:</b> <input type="checkbox"/> <b>Bacteria (only):</b> <input type="checkbox"/> <b>Cool Intact:</b> <input type="checkbox"/> <b>Observed Temp. °C:</b> _____ <b>Thermometer ID #113:</b> _____ <b>Correction Factor -0.6°C:</b> _____ <b>Corrected Temp. °C:</b> _____																			
<b>Delivered By: (Circle One)</b> Sampler - UPS - Bus - Other:										<b>Observed Temp. °C:</b> 3.8 <b>Corrected Temp. °C:</b> 3.2 <b>Sample Condition:</b> <input checked="" type="checkbox"/> Cool <input type="checkbox"/> Intact <input type="checkbox"/> Yes <input type="checkbox"/> No <b>CHECKED BY:</b> (Initials) AEO										<b>Turnaround Time:</b> _____ <b>Standard:</b> <input checked="" type="checkbox"/> <b>Rush:</b> <input type="checkbox"/> <b>Bacteria (only):</b> <input type="checkbox"/> <b>Cool Intact:</b> <input type="checkbox"/> <b>Observed Temp. °C:</b> _____ <b>Thermometer ID #113:</b> _____ <b>Correction Factor -0.6°C:</b> _____ <b>Corrected Temp. °C:</b> _____																													



PHONE (575) 393-2326 ° 101 E. MARLAND ° HOBBS, NM 88240

July 21, 2023

KELLY LOWERY

ENSOLUM, LLC

705 W WADLEY AVE.

MIDLAND, TX 79705

RE: SOUTH EDDY FLARE FIRE

Enclosed are the results of analyses for samples received by the laboratory on 07/17/23 9:30.

Cardinal Laboratories is accredited through Texas NELAP under certificate number T104704398-22-15. Accreditation applies to drinking water, non-potable water and solid and chemical materials. All accredited analytes are denoted by an asterisk (\*). For a complete list of accredited analytes and matrices visit the TCEQ website at [www.tceq.texas.gov/field/qa/lab\\_accred\\_certif.html](http://www.tceq.texas.gov/field/qa/lab_accred_certif.html).

Cardinal Laboratories is accredited through the State of Colorado Department of Public Health and Environment for:

Method EPA 552.2	Haloacetic Acids (HAA-5)
Method EPA 524.2	Total Trihalomethanes (TTHM)
Method EPA 524.4	Regulated VOCs (V1, V2, V3)

Accreditation applies to public drinking water matrices.

This report meets NELAP requirements and is made up of a cover page, analytical results, and a copy of the original chain-of-custody. If you have any questions concerning this report, please feel free to contact me.

Sincerely,

A handwritten signature in black ink that reads "Celey D. Keene". The signature is written in a cursive style with a large, stylized 'C' and 'K'.

Celey D. Keene

Lab Director/Quality Manager



PHONE (575) 393-2326 • 101 E. MARLAND • HOBBS, NM 88240

**Analytical Results For:**

ENSOLUM, LLC  
 KELLY LOWERY  
 705 W WADLEY AVE.  
 MIDLAND TX, 79705  
 Fax To:

Received: 07/17/2023  
 Reported: 07/21/2023  
 Project Name: SOUTH EDDY FLARE FIRE  
 Project Number: 03B1226287  
 Project Location: ENTERRPRISE FIELD SERV. - EDDY CO N

Sampling Date: 07/14/2023  
 Sampling Type: Soil  
 Sampling Condition: Cool & Intact  
 Sample Received By: Shalyn Rodriguez

**Sample ID: N - 1 0.25' (H233668-01)**

BTX 8021B		mg/kg		Analyzed By: JH/					
Analyte	Result	Reporting Limit	Analyzed	Method Blank	BS	% Recovery	True Value QC	RPD	Qualifier
Benzene*	<0.050	0.050	07/20/2023	ND	2.12	106	2.00	4.57	
Toluene*	<0.050	0.050	07/20/2023	ND	2.08	104	2.00	2.98	
Ethylbenzene*	<0.050	0.050	07/20/2023	ND	2.22	111	2.00	3.37	
Total Xylenes*	<0.150	0.150	07/20/2023	ND	6.69	112	6.00	3.15	
Total BTX	<0.300	0.300	07/20/2023	ND					

Surrogate: 4-Bromofluorobenzene (PID) 117 % 71.5-134

Chloride, SM4500Cl-B		mg/kg		Analyzed By: AC					
Analyte	Result	Reporting Limit	Analyzed	Method Blank	BS	% Recovery	True Value QC	RPD	Qualifier
Chloride	32.0	16.0	07/18/2023	ND	432	108	400	7.69	

TPH 8015M		mg/kg		Analyzed By: MS					
Analyte	Result	Reporting Limit	Analyzed	Method Blank	BS	% Recovery	True Value QC	RPD	Qualifier
GRO C6-C10*	<10.0	10.0	07/19/2023	ND	199	99.3	200	4.59	
DRO >C10-C28*	<10.0	10.0	07/19/2023	ND	210	105	200	4.05	
EXT DRO >C28-C36	<10.0	10.0	07/19/2023	ND					

Surrogate: 1-Chlorooctane 101 % 48.2-134

Surrogate: 1-Chlorooctadecane 112 % 49.1-148

Cardinal Laboratories

\*=Accredited Analyte

PLEASE NOTE: Liability and Damages. Cardinal's liability and client's exclusive remedy for any claim arising, whether based in contract or tort, shall be limited to the amount paid by client for analyses. All claims, including those for negligence and any other cause whatsoever shall be deemed waived unless made in writing and received by Cardinal within thirty (30) days after completion of the applicable service. In no event shall Cardinal be liable for incidental or consequential damages, including, without limitation, business interruptions, loss of use, or loss of profits incurred by client, its subsidiaries, affiliates or successors arising out of or related to the performance of the services hereunder by Cardinal, regardless of whether such claim is based upon any of the above stated reasons or otherwise. Results relate only to the samples identified above. This report shall not be reproduced except in full with written approval of Cardinal Laboratories.

Celey D. Keene, Lab Director/Quality Manager





PHONE (575) 393-2326 ° 101 E. MARLAND ° HOBBS, NM 88240

**Analytical Results For:**

ENSOLUM, LLC  
 KELLY LOWERY  
 705 W WADLEY AVE.  
 MIDLAND TX, 79705  
 Fax To:

Received: 07/17/2023  
 Reported: 07/21/2023  
 Project Name: SOUTH EDDY FLARE FIRE  
 Project Number: 03B1226287  
 Project Location: ENTERRPRISE FIELD SERV. - EDDY CO N

Sampling Date: 07/14/2023  
 Sampling Type: Soil  
 Sampling Condition: Cool & Intact  
 Sample Received By: Shalyn Rodriguez

**Sample ID: E - 1 0.25' (H233668-02)**

BTX 8021B		mg/kg		Analyzed By: JH/					
Analyte	Result	Reporting Limit	Analyzed	Method Blank	BS	% Recovery	True Value QC	RPD	Qualifier
Benzene*	<0.050	0.050	07/20/2023	ND	2.12	106	2.00	4.57	
Toluene*	<0.050	0.050	07/20/2023	ND	2.08	104	2.00	2.98	
Ethylbenzene*	<0.050	0.050	07/20/2023	ND	2.22	111	2.00	3.37	
Total Xylenes*	<0.150	0.150	07/20/2023	ND	6.69	112	6.00	3.15	
Total BTX	<0.300	0.300	07/20/2023	ND					

Surrogate: 4-Bromofluorobenzene (PID) 115 % 71.5-134

Chloride, SM4500Cl-B		mg/kg		Analyzed By: AC					
Analyte	Result	Reporting Limit	Analyzed	Method Blank	BS	% Recovery	True Value QC	RPD	Qualifier
Chloride	80.0	16.0	07/18/2023	ND	432	108	400	7.69	

TPH 8015M		mg/kg		Analyzed By: MS					
Analyte	Result	Reporting Limit	Analyzed	Method Blank	BS	% Recovery	True Value QC	RPD	Qualifier
GRO C6-C10*	<10.0	10.0	07/19/2023	ND	199	99.3	200	4.59	
DRO >C10-C28*	<10.0	10.0	07/19/2023	ND	210	105	200	4.05	
EXT DRO >C28-C36	<10.0	10.0	07/19/2023	ND					

Surrogate: 1-Chlorooctane 109 % 48.2-134

Surrogate: 1-Chlorooctadecane 121 % 49.1-148

Cardinal Laboratories

\*=Accredited Analyte

PLEASE NOTE: Liability and Damages. Cardinal's liability and client's exclusive remedy for any claim arising, whether based in contract or tort, shall be limited to the amount paid by client for analyses. All claims, including those for negligence and any other cause whatsoever shall be deemed waived unless made in writing and received by Cardinal within thirty (30) days after completion of the applicable service. In no event shall Cardinal be liable for incidental or consequential damages, including, without limitation, business interruptions, loss of use, or loss of profits incurred by client, its subsidiaries, affiliates or successors arising out of or related to the performance of the services hereunder by Cardinal, regardless of whether such claim is based upon any of the above stated reasons or otherwise. Results relate only to the samples identified above. This report shall not be reproduced except in full with written approval of Cardinal Laboratories.

Celey D. Keene, Lab Director/Quality Manager



PHONE (575) 393-2326 ° 101 E. MARLAND ° HOBBS, NM 88240

**Analytical Results For:**

ENSOLUM, LLC  
 KELLY LOWERY  
 705 W WADLEY AVE.  
 MIDLAND TX, 79705  
 Fax To:

Received: 07/17/2023  
 Reported: 07/21/2023  
 Project Name: SOUTH EDDY FLARE FIRE  
 Project Number: 03B1226287  
 Project Location: ENTERRPRISE FIELD SERV. - EDDY CO N

Sampling Date: 07/14/2023  
 Sampling Type: Soil  
 Sampling Condition: Cool & Intact  
 Sample Received By: Shalyn Rodriguez

**Sample ID: S - 1 0.25' (H233668-03)**

BTEx 8021B		mg/kg		Analyzed By: JH/					
Analyte	Result	Reporting Limit	Analyzed	Method Blank	BS	% Recovery	True Value QC	RPD	Qualifier
Benzene*	<0.050	0.050	07/20/2023	ND	2.12	106	2.00	4.57	
Toluene*	<0.050	0.050	07/20/2023	ND	2.08	104	2.00	2.98	
Ethylbenzene*	<0.050	0.050	07/20/2023	ND	2.22	111	2.00	3.37	
Total Xylenes*	<0.150	0.150	07/20/2023	ND	6.69	112	6.00	3.15	
Total BTEX	<0.300	0.300	07/20/2023	ND					

Surrogate: 4-Bromofluorobenzene (PID) 113 % 71.5-134

Chloride, SM4500CI-B		mg/kg		Analyzed By: AC					
Analyte	Result	Reporting Limit	Analyzed	Method Blank	BS	% Recovery	True Value QC	RPD	Qualifier
Chloride	96.0	16.0	07/18/2023	ND	432	108	400	7.69	

TPH 8015M		mg/kg		Analyzed By: MS					
Analyte	Result	Reporting Limit	Analyzed	Method Blank	BS	% Recovery	True Value QC	RPD	Qualifier
GRO C6-C10*	<10.0	10.0	07/19/2023	ND	202	101	200	6.25	
DRO >C10-C28*	<10.0	10.0	07/19/2023	ND	210	105	200	5.35	
EXT DRO >C28-C36	<10.0	10.0	07/19/2023	ND					

Surrogate: 1-Chlorooctane 57.6 % 48.2-134

Surrogate: 1-Chlorooctadecane 69.0 % 49.1-148

Cardinal Laboratories

\*=Accredited Analyte

PLEASE NOTE: Liability and Damages. Cardinal's liability and client's exclusive remedy for any claim arising, whether based in contract or tort, shall be limited to the amount paid by client for analyses. All claims, including those for negligence and any other cause whatsoever shall be deemed waived unless made in writing and received by Cardinal within thirty (30) days after completion of the applicable service. In no event shall Cardinal be liable for incidental or consequential damages, including, without limitation, business interruptions, loss of use, or loss of profits incurred by client, its subsidiaries, affiliates or successors arising out of or related to the performance of the services hereunder by Cardinal, regardless of whether such claim is based upon any of the above stated reasons or otherwise. Results relate only to the samples identified above. This report shall not be reproduced except in full with written approval of Cardinal Laboratories.

Celey D. Keene, Lab Director/Quality Manager



PHONE (575) 393-2326 ° 101 E. MARLAND ° HOBBS, NM 88240

**Analytical Results For:**

ENSOLUM, LLC  
 KELLY LOWERY  
 705 W WADLEY AVE.  
 MIDLAND TX, 79705  
 Fax To:

Received: 07/17/2023  
 Reported: 07/21/2023  
 Project Name: SOUTH EDDY FLARE FIRE  
 Project Number: 03B1226287  
 Project Location: ENTERRPRISE FIELD SERV. - EDDY CO N

Sampling Date: 07/14/2023  
 Sampling Type: Soil  
 Sampling Condition: Cool & Intact  
 Sample Received By: Shalyn Rodriguez

**Sample ID: W - 1 0.25' (H233668-04)**

BTEX 8021B		mg/kg		Analyzed By: MS					
Analyte	Result	Reporting Limit	Analyzed	Method Blank	BS	% Recovery	True Value QC	RPD	Qualifier
Benzene*	<0.050	0.050	07/19/2023	ND	2.01	101	2.00	2.04	
Toluene*	<0.050	0.050	07/19/2023	ND	1.99	99.6	2.00	1.65	
Ethylbenzene*	<0.050	0.050	07/19/2023	ND	1.96	98.2	2.00	2.22	
Total Xylenes*	<0.150	0.150	07/19/2023	ND	5.84	97.3	6.00	2.61	
Total BTEX	<0.300	0.300	07/19/2023	ND					

Surrogate: 4-Bromofluorobenzene (PID) 109 % 71.5-134

Chloride, SM4500Cl-B		mg/kg		Analyzed By: AC					
Analyte	Result	Reporting Limit	Analyzed	Method Blank	BS	% Recovery	True Value QC	RPD	Qualifier
Chloride	96.0	16.0	07/18/2023	ND	432	108	400	7.69	

TPH 8015M		mg/kg		Analyzed By: MS					
Analyte	Result	Reporting Limit	Analyzed	Method Blank	BS	% Recovery	True Value QC	RPD	Qualifier
GRO C6-C10*	<10.0	10.0	07/19/2023	ND	202	101	200	6.25	
DRO >C10-C28*	<10.0	10.0	07/19/2023	ND	210	105	200	5.35	
EXT DRO >C28-C36	<10.0	10.0	07/19/2023	ND					

Surrogate: 1-Chlorooctane 59.1 % 48.2-134

Surrogate: 1-Chlorooctadecane 69.7 % 49.1-148

Cardinal Laboratories

\*=Accredited Analyte

PLEASE NOTE: Liability and Damages. Cardinal's liability and client's exclusive remedy for any claim arising, whether based in contract or tort, shall be limited to the amount paid by client for analyses. All claims, including those for negligence and any other cause whatsoever shall be deemed waived unless made in writing and received by Cardinal within thirty (30) days after completion of the applicable service. In no event shall Cardinal be liable for incidental or consequential damages, including, without limitation, business interruptions, loss of use, or loss of profits incurred by client, its subsidiaries, affiliates or successors arising out of or related to the performance of the services hereunder by Cardinal, regardless of whether such claim is based upon any of the above stated reasons or otherwise. Results relate only to the samples identified above. This report shall not be reproduced except in full with written approval of Cardinal Laboratories.

Celey D. Keene, Lab Director/Quality Manager



PHONE (575) 393-2326 ° 101 E. MARLAND ° HOBBS, NM 88240

**Analytical Results For:**

ENSOLUM, LLC  
 KELLY LOWERY  
 705 W WADLEY AVE.  
 MIDLAND TX, 79705  
 Fax To:

Received: 07/17/2023  
 Reported: 07/21/2023  
 Project Name: SOUTH EDDY FLARE FIRE  
 Project Number: 03B1226287  
 Project Location: ENTERRPRISE FIELD SERV. - EDDY CO N

Sampling Date: 07/14/2023  
 Sampling Type: Soil  
 Sampling Condition: Cool & Intact  
 Sample Received By: Shalyn Rodriguez

**Sample ID: N - 2 0.25' (H233668-05)**

BTEx 8021B		mg/kg		Analyzed By: MS						
Analyte	Result	Reporting Limit	Analyzed	Method Blank	BS	% Recovery	True Value QC	RPD	Qualifier	
Benzene*	<0.050	0.050	07/19/2023	ND	2.01	101	2.00	2.04		
Toluene*	<0.050	0.050	07/19/2023	ND	1.99	99.6	2.00	1.65		
Ethylbenzene*	<0.050	0.050	07/19/2023	ND	1.96	98.2	2.00	2.22		
Total Xylenes*	<0.150	0.150	07/19/2023	ND	5.84	97.3	6.00	2.61		
Total BTEX	<0.300	0.300	07/19/2023	ND						

Surrogate: 4-Bromofluorobenzene (PID) 111 % 71.5-134

Chloride, SM4500Cl-B		mg/kg		Analyzed By: AC						
Analyte	Result	Reporting Limit	Analyzed	Method Blank	BS	% Recovery	True Value QC	RPD	Qualifier	
Chloride	144	16.0	07/18/2023	ND	432	108	400	7.69		

TPH 8015M		mg/kg		Analyzed By: MS					
Analyte	Result	Reporting Limit	Analyzed	Method Blank	BS	% Recovery	True Value QC	RPD	Qualifier
GRO C6-C10*	<10.0	10.0	07/19/2023	ND	202	101	200	6.25	
DRO >C10-C28*	<10.0	10.0	07/19/2023	ND	210	105	200	5.35	
EXT DRO >C28-C36	<10.0	10.0	07/19/2023	ND					

Surrogate: 1-Chlorooctane 59.3 % 48.2-134

Surrogate: 1-Chlorooctadecane 69.9 % 49.1-148

Cardinal Laboratories

\*=Accredited Analyte

PLEASE NOTE: Liability and Damages. Cardinal's liability and client's exclusive remedy for any claim arising, whether based in contract or tort, shall be limited to the amount paid by client for analyses. All claims, including those for negligence and any other cause whatsoever shall be deemed waived unless made in writing and received by Cardinal within thirty (30) days after completion of the applicable service. In no event shall Cardinal be liable for incidental or consequential damages, including, without limitation, business interruptions, loss of use, or loss of profits incurred by client, its subsidiaries, affiliates or successors arising out of or related to the performance of the services hereunder by Cardinal, regardless of whether such claim is based upon any of the above stated reasons or otherwise. Results relate only to the samples identified above. This report shall not be reproduced except in full with written approval of Cardinal Laboratories.

Celey D. Keene, Lab Director/Quality Manager





PHONE (575) 393-2326 • 101 E. MARLAND • HOBBS, NM 88240

**Analytical Results For:**

ENSOLUM, LLC  
 KELLY LOWERY  
 705 W WADLEY AVE.  
 MIDLAND TX, 79705  
 Fax To:

Received: 07/17/2023  
 Reported: 07/21/2023  
 Project Name: SOUTH EDDY FLARE FIRE  
 Project Number: 03B1226287  
 Project Location: ENTERRPRISE FIELD SERV. - EDDY CO N

Sampling Date: 07/14/2023  
 Sampling Type: Soil  
 Sampling Condition: Cool & Intact  
 Sample Received By: Shalyn Rodriguez

**Sample ID: E - 2 0.25' (H233668-06)**

BTEx 8021B		mg/kg		Analyzed By: MS						
Analyte	Result	Reporting Limit	Analyzed	Method Blank	BS	% Recovery	True Value QC	RPD	Qualifier	
Benzene*	<0.050	0.050	07/19/2023	ND	2.01	101	2.00	2.04		
Toluene*	<0.050	0.050	07/19/2023	ND	1.99	99.6	2.00	1.65		
Ethylbenzene*	<0.050	0.050	07/19/2023	ND	1.96	98.2	2.00	2.22		
Total Xylenes*	<0.150	0.150	07/19/2023	ND	5.84	97.3	6.00	2.61		
Total BTEx	<0.300	0.300	07/19/2023	ND						

Surrogate: 4-Bromofluorobenzene (PID) 109 % 71.5-134

Chloride, SM4500Cl-B		mg/kg		Analyzed By: AC					
Analyte	Result	Reporting Limit	Analyzed	Method Blank	BS	% Recovery	True Value QC	RPD	Qualifier
Chloride	48.0	16.0	07/18/2023	ND	400	100	400	3.92	

TPH 8015M		mg/kg		Analyzed By: MS					
Analyte	Result	Reporting Limit	Analyzed	Method Blank	BS	% Recovery	True Value QC	RPD	Qualifier
GRO C6-C10*	<10.0	10.0	07/19/2023	ND	202	101	200	6.25	
DRO >C10-C28*	<10.0	10.0	07/19/2023	ND	210	105	200	5.35	
EXT DRO >C28-C36	<10.0	10.0	07/19/2023	ND					

Surrogate: 1-Chlorooctane 59.7 % 48.2-134

Surrogate: 1-Chlorooctadecane 70.3 % 49.1-148

Cardinal Laboratories

\*=Accredited Analyte

PLEASE NOTE: Liability and Damages. Cardinal's liability and client's exclusive remedy for any claim arising, whether based in contract or tort, shall be limited to the amount paid by client for analyses. All claims, including those for negligence and any other cause whatsoever shall be deemed waived unless made in writing and received by Cardinal within thirty (30) days after completion of the applicable service. In no event shall Cardinal be liable for incidental or consequential damages, including, without limitation, business interruptions, loss of use, or loss of profits incurred by client, its subsidiaries, affiliates or successors arising out of or related to the performance of the services hereunder by Cardinal, regardless of whether such claim is based upon any of the above stated reasons or otherwise. Results relate only to the samples identified above. This report shall not be reproduced except in full with written approval of Cardinal Laboratories.

Celey D. Keene, Lab Director/Quality Manager



PHONE (575) 393-2326 ° 101 E. MARLAND ° HOBBS, NM 88240

**Analytical Results For:**

ENSOLUM, LLC  
 KELLY LOWERY  
 705 W WADLEY AVE.  
 MIDLAND TX, 79705  
 Fax To:

Received: 07/17/2023  
 Reported: 07/21/2023  
 Project Name: SOUTH EDDY FLARE FIRE  
 Project Number: 03B1226287  
 Project Location: ENTERRPRISE FIELD SERV. - EDDY CO N

Sampling Date: 07/14/2023  
 Sampling Type: Soil  
 Sampling Condition: Cool & Intact  
 Sample Received By: Shalyn Rodriguez

**Sample ID: S - 2 0.25' (H233668-07)**

BTX 8021B			mg/kg		Analyzed By: MS				
Analyte	Result	Reporting Limit	Analyzed	Method Blank	BS	% Recovery	True Value QC	RPD	Qualifier
Benzene*	<0.050	0.050	07/19/2023	ND	2.01	101	2.00	2.04	
Toluene*	<0.050	0.050	07/19/2023	ND	1.99	99.6	2.00	1.65	
Ethylbenzene*	<0.050	0.050	07/19/2023	ND	1.96	98.2	2.00	2.22	
Total Xylenes*	<0.150	0.150	07/19/2023	ND	5.84	97.3	6.00	2.61	
Total BTX	<0.300	0.300	07/19/2023	ND					

Surrogate: 4-Bromofluorobenzene (PID) 117 % 71.5-134

Chloride, SM4500Cl-B		mg/kg		Analyzed By: AC					
Analyte	Result	Reporting Limit	Analyzed	Method Blank	BS	% Recovery	True Value QC	RPD	Qualifier
Chloride	128	16.0	07/18/2023	ND	400	100	400	3.92	

TPH 8015M		mg/kg		Analyzed By: MS					
Analyte	Result	Reporting Limit	Analyzed	Method Blank	BS	% Recovery	True Value QC	RPD	Qualifier
GRO C6-C10*	<10.0	10.0	07/19/2023	ND	202	101	200	6.25	
DRO >C10-C28*	<10.0	10.0	07/19/2023	ND	210	105	200	5.35	
EXT DRO >C28-C36	<10.0	10.0	07/19/2023	ND					

Surrogate: 1-Chlorooctane 61.5 % 48.2-134

Surrogate: 1-Chlorooctadecane 73.5 % 49.1-148

Cardinal Laboratories

\*=Accredited Analyte

PLEASE NOTE: Liability and Damages. Cardinal's liability and client's exclusive remedy for any claim arising, whether based in contract or tort, shall be limited to the amount paid by client for analyses. All claims, including those for negligence and any other cause whatsoever shall be deemed waived unless made in writing and received by Cardinal within thirty (30) days after completion of the applicable service. In no event shall Cardinal be liable for incidental or consequential damages, including, without limitation, business interruptions, loss of use, or loss of profits incurred by client, its subsidiaries, affiliates or successors arising out of or related to the performance of the services hereunder by Cardinal, regardless of whether such claim is based upon any of the above stated reasons or otherwise. Results relate only to the samples identified above. This report shall not be reproduced except in full with written approval of Cardinal Laboratories.

Celey D. Keene, Lab Director/Quality Manager



PHONE (575) 393-2326 ° 101 E. MARLAND ° HOBBS, NM 88240

**Analytical Results For:**

ENSOLUM, LLC  
 KELLY LOWERY  
 705 W WADLEY AVE.  
 MIDLAND TX, 79705  
 Fax To:

Received: 07/17/2023  
 Reported: 07/21/2023  
 Project Name: SOUTH EDDY FLARE FIRE  
 Project Number: 03B1226287  
 Project Location: ENTERRPRISE FIELD SERV. - EDDY CO N

Sampling Date: 07/14/2023  
 Sampling Type: Soil  
 Sampling Condition: Cool & Intact  
 Sample Received By: Shalyn Rodriguez

**Sample ID: W - 2 0.25' (H233668-08)**

BTEx 8021B		mg/kg		Analyzed By: JH/					
Analyte	Result	Reporting Limit	Analyzed	Method Blank	BS	% Recovery	True Value QC	RPD	Qualifier
Benzene*	<0.050	0.050	07/20/2023	ND	2.12	106	2.00	4.57	
Toluene*	<0.050	0.050	07/20/2023	ND	2.08	104	2.00	2.98	
Ethylbenzene*	<0.050	0.050	07/20/2023	ND	2.22	111	2.00	3.37	
Total Xylenes*	<0.150	0.150	07/20/2023	ND	6.69	112	6.00	3.15	
Total BTEX	<0.300	0.300	07/20/2023	ND					

Surrogate: 4-Bromofluorobenzene (PID) 118 % 71.5-134

Chloride, SM4500Cl-B		mg/kg		Analyzed By: AC						
Analyte	Result	Reporting Limit	Analyzed	Method Blank	BS	% Recovery	True Value QC	RPD	Qualifier	
Chloride	80.0	16.0	07/18/2023	ND	400	100	400	3.92		

TPH 8015M		mg/kg		Analyzed By: MS					
Analyte	Result	Reporting Limit	Analyzed	Method Blank	BS	% Recovery	True Value QC	RPD	Qualifier
GRO C6-C10*	<10.0	10.0	07/19/2023	ND	202	101	200	6.25	
DRO >C10-C28*	<10.0	10.0	07/19/2023	ND	210	105	200	5.35	
EXT DRO >C28-C36	<10.0	10.0	07/19/2023	ND					

Surrogate: 1-Chlorooctane 57.9 % 48.2-134

Surrogate: 1-Chlorooctadecane 66.9 % 49.1-148

Cardinal Laboratories

\*=Accredited Analyte

PLEASE NOTE: Liability and Damages. Cardinal's liability and client's exclusive remedy for any claim arising, whether based in contract or tort, shall be limited to the amount paid by client for analyses. All claims, including those for negligence and any other cause whatsoever shall be deemed waived unless made in writing and received by Cardinal within thirty (30) days after completion of the applicable service. In no event shall Cardinal be liable for incidental or consequential damages, including, without limitation, business interruptions, loss of use, or loss of profits incurred by client, its subsidiaries, affiliates or successors arising out of or related to the performance of the services hereunder by Cardinal, regardless of whether such claim is based upon any of the above stated reasons or otherwise. Results relate only to the samples identified above. This report shall not be reproduced except in full with written approval of Cardinal Laboratories.

Celey D. Keene, Lab Director/Quality Manager



PHONE (575) 393-2326 ° 101 E. MARLAND ° HOBBS, NM 88240

**Analytical Results For:**

ENSOLUM, LLC  
 KELLY LOWERY  
 705 W WADLEY AVE.  
 MIDLAND TX, 79705  
 Fax To:

Received: 07/17/2023  
 Reported: 07/21/2023  
 Project Name: SOUTH EDDY FLARE FIRE  
 Project Number: 03B1226287  
 Project Location: ENTERRPRISE FIELD SERV. - EDDY CO N

Sampling Date: 07/14/2023  
 Sampling Type: Soil  
 Sampling Condition: Cool & Intact  
 Sample Received By: Shalyn Rodriguez

**Sample ID: N - 3 0.25' (H233668-09)**

BTEx 8021B		mg/kg		Analyzed By: JH/					
Analyte	Result	Reporting Limit	Analyzed	Method Blank	BS	% Recovery	True Value QC	RPD	Qualifier
Benzene*	<0.050	0.050	07/20/2023	ND	2.12	106	2.00	4.57	
Toluene*	<0.050	0.050	07/20/2023	ND	2.08	104	2.00	2.98	
Ethylbenzene*	<0.050	0.050	07/20/2023	ND	2.22	111	2.00	3.37	
Total Xylenes*	<0.150	0.150	07/20/2023	ND	6.69	112	6.00	3.15	
Total BTEX	<0.300	0.300	07/20/2023	ND					

Surrogate: 4-Bromofluorobenzene (PID) 116 % 71.5-134

Chloride, SM4500Cl-B		mg/kg		Analyzed By: AC						
Analyte	Result	Reporting Limit	Analyzed	Method Blank	BS	% Recovery	True Value QC	RPD	Qualifier	
Chloride	32.0	16.0	07/18/2023	ND	400	100	400	3.92		

TPH 8015M		mg/kg		Analyzed By: MS					
Analyte	Result	Reporting Limit	Analyzed	Method Blank	BS	% Recovery	True Value QC	RPD	Qualifier
GRO C6-C10*	<10.0	10.0	07/19/2023	ND	202	101	200	6.25	
DRO >C10-C28*	<10.0	10.0	07/19/2023	ND	210	105	200	5.35	
EXT DRO >C28-C36	<10.0	10.0	07/19/2023	ND					

Surrogate: 1-Chlorooctane 61.4 % 48.2-134

Surrogate: 1-Chlorooctadecane 72.2 % 49.1-148

Cardinal Laboratories

\*=Accredited Analyte

PLEASE NOTE: Liability and Damages. Cardinal's liability and client's exclusive remedy for any claim arising, whether based in contract or tort, shall be limited to the amount paid by client for analyses. All claims, including those for negligence and any other cause whatsoever shall be deemed waived unless made in writing and received by Cardinal within thirty (30) days after completion of the applicable service. In no event shall Cardinal be liable for incidental or consequential damages, including, without limitation, business interruptions, loss of use, or loss of profits incurred by client, its subsidiaries, affiliates or successors arising out of or related to the performance of the services hereunder by Cardinal, regardless of whether such claim is based upon any of the above stated reasons or otherwise. Results relate only to the samples identified above. This report shall not be reproduced except in full with written approval of Cardinal Laboratories.

Celey D. Keene, Lab Director/Quality Manager





PHONE (575) 393-2326 ° 101 E. MARLAND ° HOBBS, NM 88240

**Analytical Results For:**

ENSOLUM, LLC  
 KELLY LOWERY  
 705 W WADLEY AVE.  
 MIDLAND TX, 79705  
 Fax To:

Received: 07/17/2023  
 Reported: 07/21/2023  
 Project Name: SOUTH EDDY FLARE FIRE  
 Project Number: 03B1226287  
 Project Location: ENTERRPRISE FIELD SERV. - EDDY CO N

Sampling Date: 07/14/2023  
 Sampling Type: Soil  
 Sampling Condition: Cool & Intact  
 Sample Received By: Shalyn Rodriguez

**Sample ID: E - 3 0.25' (H233668-10)**

BTEX 8021B		mg/kg		Analyzed By: JH/					
Analyte	Result	Reporting Limit	Analyzed	Method Blank	BS	% Recovery	True Value QC	RPD	Qualifier
Benzene*	<0.050	0.050	07/20/2023	ND	2.12	106	2.00	4.57	
Toluene*	<0.050	0.050	07/20/2023	ND	2.08	104	2.00	2.98	
Ethylbenzene*	<0.050	0.050	07/20/2023	ND	2.22	111	2.00	3.37	
Total Xylenes*	<0.150	0.150	07/20/2023	ND	6.69	112	6.00	3.15	
Total BTEX	<0.300	0.300	07/20/2023	ND					

Surrogate: 4-Bromofluorobenzene (PID) 112 % 71.5-134

Chloride, SM4500Cl-B		mg/kg		Analyzed By: AC					
Analyte	Result	Reporting Limit	Analyzed	Method Blank	BS	% Recovery	True Value QC	RPD	Qualifier
Chloride	16.0	16.0	07/18/2023	ND	400	100	400	3.92	

TPH 8015M		mg/kg		Analyzed By: MS					
Analyte	Result	Reporting Limit	Analyzed	Method Blank	BS	% Recovery	True Value QC	RPD	Qualifier
GRO C6-C10*	<10.0	10.0	07/19/2023	ND	202	101	200	6.25	
DRO >C10-C28*	<10.0	10.0	07/19/2023	ND	210	105	200	5.35	
EXT DRO >C28-C36	<10.0	10.0	07/19/2023	ND					

Surrogate: 1-Chlorooctane 58.3 % 48.2-134

Surrogate: 1-Chlorooctadecane 68.1 % 49.1-148

Cardinal Laboratories

\*=Accredited Analyte

PLEASE NOTE: Liability and Damages. Cardinal's liability and client's exclusive remedy for any claim arising, whether based in contract or tort, shall be limited to the amount paid by client for analyses. All claims, including those for negligence and any other cause whatsoever shall be deemed waived unless made in writing and received by Cardinal within thirty (30) days after completion of the applicable service. In no event shall Cardinal be liable for incidental or consequential damages, including, without limitation, business interruptions, loss of use, or loss of profits incurred by client, its subsidiaries, affiliates or successors arising out of or related to the performance of the services hereunder by Cardinal, regardless of whether such claim is based upon any of the above stated reasons or otherwise. Results relate only to the samples identified above. This report shall not be reproduced except in full with written approval of Cardinal Laboratories.

Celey D. Keene, Lab Director/Quality Manager



PHONE (575) 393-2326 ° 101 E. MARLAND ° HOBBS, NM 88240

**Analytical Results For:**

ENSOLUM, LLC  
 KELLY LOWERY  
 705 W WADLEY AVE.  
 MIDLAND TX, 79705  
 Fax To:

Received: 07/17/2023  
 Reported: 07/21/2023  
 Project Name: SOUTH EDDY FLARE FIRE  
 Project Number: 03B1226287  
 Project Location: ENTERRPRISE FIELD SERV. - EDDY CO N

Sampling Date: 07/14/2023  
 Sampling Type: Soil  
 Sampling Condition: Cool & Intact  
 Sample Received By: Shalyn Rodriguez

**Sample ID: S - 3 0.25' (H233668-11)**

BTEX 8021B		mg/kg		Analyzed By: JH/					
Analyte	Result	Reporting Limit	Analyzed	Method Blank	BS	% Recovery	True Value QC	RPD	Qualifier
Benzene*	<0.050	0.050	07/20/2023	ND	2.12	106	2.00	4.57	
Toluene*	<0.050	0.050	07/20/2023	ND	2.08	104	2.00	2.98	
Ethylbenzene*	<0.050	0.050	07/20/2023	ND	2.22	111	2.00	3.37	
Total Xylenes*	<0.150	0.150	07/20/2023	ND	6.69	112	6.00	3.15	
Total BTEX	<0.300	0.300	07/20/2023	ND					

Surrogate: 4-Bromofluorobenzene (PID) 117 % 71.5-134

Chloride, SM4500Cl-B		mg/kg		Analyzed By: AC					
Analyte	Result	Reporting Limit	Analyzed	Method Blank	BS	% Recovery	True Value QC	RPD	Qualifier
Chloride	<16.0	16.0	07/18/2023	ND	400	100	400	3.92	

TPH 8015M		mg/kg		Analyzed By: MS					
Analyte	Result	Reporting Limit	Analyzed	Method Blank	BS	% Recovery	True Value QC	RPD	Qualifier
GRO C6-C10*	<10.0	10.0	07/19/2023	ND	202	101	200	6.25	
DRO >C10-C28*	<10.0	10.0	07/19/2023	ND	210	105	200	5.35	
EXT DRO >C28-C36	<10.0	10.0	07/19/2023	ND					

Surrogate: 1-Chlorooctane 61.8 % 48.2-134

Surrogate: 1-Chlorooctadecane 71.5 % 49.1-148

Cardinal Laboratories

\*=Accredited Analyte

PLEASE NOTE: Liability and Damages. Cardinal's liability and client's exclusive remedy for any claim arising, whether based in contract or tort, shall be limited to the amount paid by client for analyses. All claims, including those for negligence and any other cause whatsoever shall be deemed waived unless made in writing and received by Cardinal within thirty (30) days after completion of the applicable service. In no event shall Cardinal be liable for incidental or consequential damages, including, without limitation, business interruptions, loss of use, or loss of profits incurred by client, its subsidiaries, affiliates or successors arising out of or related to the performance of the services hereunder by Cardinal, regardless of whether such claim is based upon any of the above stated reasons or otherwise. Results relate only to the samples identified above. This report shall not be reproduced except in full with written approval of Cardinal Laboratories.

Celey D. Keene, Lab Director/Quality Manager



PHONE (575) 393-2326 ° 101 E. MARLAND ° HOBBS, NM 88240

**Analytical Results For:**

ENSOLUM, LLC  
 KELLY LOWERY  
 705 W WADLEY AVE.  
 MIDLAND TX, 79705  
 Fax To:

Received: 07/17/2023  
 Reported: 07/21/2023  
 Project Name: SOUTH EDDY FLARE FIRE  
 Project Number: 03B1226287  
 Project Location: ENTERRPRISE FIELD SERV. - EDDY CO N

Sampling Date: 07/14/2023  
 Sampling Type: Soil  
 Sampling Condition: Cool & Intact  
 Sample Received By: Shalyn Rodriguez

**Sample ID: W - 3 0.25' (H233668-12)**

BTEx 8021B		mg/kg		Analyzed By: JH/					
Analyte	Result	Reporting Limit	Analyzed	Method Blank	BS	% Recovery	True Value QC	RPD	Qualifier
Benzene*	<0.050	0.050	07/20/2023	ND	2.12	106	2.00	4.57	
Toluene*	<0.050	0.050	07/20/2023	ND	2.08	104	2.00	2.98	
Ethylbenzene*	<0.050	0.050	07/20/2023	ND	2.22	111	2.00	3.37	
Total Xylenes*	<0.150	0.150	07/20/2023	ND	6.69	112	6.00	3.15	
Total BTEX	<0.300	0.300	07/20/2023	ND					

Surrogate: 4-Bromofluorobenzene (PID) 116 % 71.5-134

Chloride, SM4500Cl-B		mg/kg		Analyzed By: AC					
Analyte	Result	Reporting Limit	Analyzed	Method Blank	BS	% Recovery	True Value QC	RPD	Qualifier
Chloride	<16.0	16.0	07/18/2023	ND	400	100	400	3.92	

TPH 8015M		mg/kg		Analyzed By: MS					
Analyte	Result	Reporting Limit	Analyzed	Method Blank	BS	% Recovery	True Value QC	RPD	Qualifier
GRO C6-C10*	<10.0	10.0	07/19/2023	ND	202	101	200	6.25	
DRO >C10-C28*	<10.0	10.0	07/19/2023	ND	210	105	200	5.35	
EXT DRO >C28-C36	<10.0	10.0	07/19/2023	ND					

Surrogate: 1-Chlorooctane 58.7 % 48.2-134

Surrogate: 1-Chlorooctadecane 67.5 % 49.1-148

Cardinal Laboratories

\*=Accredited Analyte

PLEASE NOTE: Liability and Damages. Cardinal's liability and client's exclusive remedy for any claim arising, whether based in contract or tort, shall be limited to the amount paid by client for analyses. All claims, including those for negligence and any other cause whatsoever shall be deemed waived unless made in writing and received by Cardinal within thirty (30) days after completion of the applicable service. In no event shall Cardinal be liable for incidental or consequential damages, including, without limitation, business interruptions, loss of use, or loss of profits incurred by client, its subsidiaries, affiliates or successors arising out of or related to the performance of the services hereunder by Cardinal, regardless of whether such claim is based upon any of the above stated reasons or otherwise. Results relate only to the samples identified above. This report shall not be reproduced except in full with written approval of Cardinal Laboratories.

Celey D. Keene, Lab Director/Quality Manager





PHONE (575) 393-2326 ° 101 E. MARLAND ° HOBBS, NM 88240

Notes and Definitions

- QM-07      The spike recovery was outside acceptance limits for the MS and/or MSD. The batch was accepted based on acceptable LCS recovery.
- ND      Analyte NOT DETECTED at or above the reporting limit
- RPD      Relative Percent Difference
- \*\*      Samples not received at proper temperature of 6°C or below.
- \*\*\*      Insufficient time to reach temperature.
- Chloride by SM4500Cl-B does not require samples be received at or below 6°C  
Samples reported on an as received basis (wet) unless otherwise noted on report

Cardinal Laboratories

\*=Accredited Analyte

PLEASE NOTE: Liability and Damages. Cardinal's liability and client's exclusive remedy for any claim arising, whether based in contract or tort, shall be limited to the amount paid by client for analyses. All claims, including those for negligence and any other cause whatsoever shall be deemed waived unless made in writing and received by Cardinal within thirty (30) days after completion of the applicable service. In no event shall Cardinal be liable for incidental or consequential damages, including, without limitation, business interruptions, loss of use, or loss of profits incurred by client, its subsidiaries, affiliates or successors arising out of or related to the performance of the services hereunder by Cardinal, regardless of whether such claim is based upon any of the above stated reasons or otherwise. Results relate only to the samples identified above. This report shall not be reproduced except in full with written approval of Cardinal Laboratories.

A handwritten signature in black ink, appearing to read "C. D. Keene".

Celey D. Keene, Lab Director/Quality Manager



### CHAIN-OF-CUSTODY AND ANALYSIS REQUEST

101 East Marland, Hobbs, NM 88240  
(575) 393-2326 FAX (575) 393-2476

Company Name: Ensolum, LLC						P.O. #:		ANALYSIS REQUEST	
Project Manager: Kelly Lowery						Company: Enterprise Field Services,			
Address: 601 N. Mainfield St. STE 400						Attn: Robert Dunaway			
City: Midland State: TX Zip: 79701						Address: 3008 E Greene			
Phone #: 214-733-3165 Email: Klowery@ensolum.com						City: Carlsbad			
Project #: 03B1226897 Project Owner:						State: NM Zip:			
Project Location: South Eddy Place Fire						Phone #: 361-815-0990			
Sample Name: Eddy County, NM						Email: Rhidunaway@eprod.com			
FOR LAB USE ONLY						PRESERV.		SAMPLING	
Lab I.D.		Sample I.D.		Sample Depth (feet)		(G)RAB OR (C)OMP.		# CONTAINERS	
						GROUNDWATER		WASTEWATER	
						SOIL		OIL	
						SLUDGE		OTHER :	
						ACID/BASE:		ICE / COOL	
						OTHER :		DATE	
						TIME			
H2336108	N-1	0.25	G 1	X	7/14/23	1558	X	X	X
2	E-1	0.25	G 1	X	7/14/23	1600	X	X	X
3	S-1	0.25	G 1	X	7/14/23	1602	X	X	X
4	N-1	0.25	G 1	X	7/14/23	1604	X	X	X
5	N-2	0.25	G 1	X	7/14/23	1606	X	X	X
6	E-2	0.25	G 1	X	7/14/23	1608	X	X	X
7	S-2	0.25	G 1	X	7/14/23	1610	X	X	X
8	N-2	0.25	G 1	X	7/14/23	1612	X	X	X
9	N-3	0.25	G 1	X	7/14/23	1614	X	X	X
10	E-3	0.25	G 1	X	7/14/23	1616	X	X	X

PLASTER NOTE: Liability and Coverage: Contract liability and damage insurance provided for any sampling under contract or test shall be limited to the amount paid by the client for the analysis.

All claims including those for negligence and any other cause whatsoever shall be deemed waived unless made in writing and received by Client within 30 days after completion of the applicable service.

In no event shall Client be liable for incidental or consequential damages, including without limitation, business interruption, loss of sales, or loss of profits incurred by client, its subsidiaries, affiliates or successors arising out of or related to the performance of services hereunder by Client, regardless of whether such claim is based upon any of the above stated reasons or otherwise.

Relinquished By: [Signature] Date: 7/14/23 Received By: [Signature] Date: 7/14/23 Time: 2:00

Relinquished By: [Signature] Date: 7/17/23 Received By: [Signature] Date: 7/17/23 Time: 0930

Delivered By: (Circle One) Sample Condition: Cool Intact ☒ Hot ☐ No ☐ No

Sampler - UPS - Bus - Other: Observed Temp. °C: 0.6°C

CHECKED BY: [Signature] (Initials)

REMARKS: Thermometer ID: 9714-140 Standard ☒ Backup (only) Sample Condition: ☒ Risk ☐ Cool Intact Observed Temp. °C: Correction Factor: 0.000 Yes ☐ No ☐ No

BILL TO

P.O. #:

Company: Enterprise Field Services,

Attn: Robert Dunaway

Address: 3008 E Greene

City: Carlsbad

State: NM Zip:

Phone #: 361-815-0990

Email: Rhidunaway@eprod.com

USE

7/14/23

Sam





District I  
1625 N. French Dr., Hobbs, NM 88240  
District II  
811 S. First St., Artesia, NM 88210  
District III  
1000 Rio Brazos Road, Aztec, NM 87410  
District IV  
1220 S. St. Francis Dr., Santa Fe, NM 87505

State of New Mexico  
Energy Minerals and Natural  
Resources Department  
  
Oil Conservation Division  
1220 South St. Francis Dr.  
Santa Fe, NM 87505

Form C-141  
Revised August 24, 2018  
Submit to appropriate OCD District office

Incident ID	
District RP	
Facility ID	
Application ID	

Release Notification

Responsible Party

Responsible Party: <b>Enterprise Field Services, LLC</b>	OGRID: <b>241602</b>
Contact Name: <b>Thomas Long</b>	Contact Telephone: <b>505-599-2286</b>
Contact email: <b>tjlong@eprod.com</b>	Incident # (assigned by OCD) #: <b>nAPP2316528547</b>
Contact mailing address: <b>614 Reilly Ave, Farmington, NM 87401</b>	

Location of Release Source

Latitude <b>32.160411</b>	Longitude <b>-103.827911</b>	NAD 83 in decimal degrees to 5 decimal places)
Site Name: <b>South Eddy Cryo Plant</b>	Site Type <b>Natural Gas Processing Plant</b>	
Date Release Discovered: <b>06/14/2023</b>	Serial # (if applicable) <b>N/A</b>	

Unit Letter	Section	Township	Range	County
<b>H</b>	<b>01</b>	<b>25S</b>	<b>30E</b>	<b>Eddy</b>

Surface Owner:    ☐ State    ☐ Federal    ☐ Tribal    ☒ Private (Name: **Enterprise Field Services LLC** )

Nature and Volume of Release

Material(s) Released (Select all that apply and attach calculations or specific justification for the volumes provided below)		
<input type="checkbox"/> Crude Oil	Volume Released (bbls)	Volume Recovered (bbls)
<input type="checkbox"/> Produced Water	Volume Released (bbls)	Volume Recovered (bbls)
	Is the concentration of dissolved chloride in the produced water >10,000 mg/l?	<input type="checkbox"/> Yes <input type="checkbox"/> No
<input checked="" type="checkbox"/> Condensate	Volume Released (bbls): <b>30 BBLS</b>	Volume Recovered (bbls): <b>0</b>
<input type="checkbox"/> Natural Gas	Volume Released (Mcf):	Volume Recovered (Mcf):
<input checked="" type="checkbox"/> Other (describe) Fire	Volume/Weight Released (provide units)	Volume/Weight Recovered (provide units)

**Cause of Release:** On June 14, 2023, natural gas liquids from the facility were ejected from the facility flare resulting in a fire. No emergency service responded. No injuries occurred. The fire self-extinguished. From June 28, 2023 to July 14, 2023, a third party contractor evaluated the areas where the fluids were release and caught fire. Based on the laboratory results collected in the impacted areas, no contaminants of concern exceeding NMOCD remediation standards were identified. A third party closure report is included with this "Final C-141."



Incident ID	
District RP	
Facility ID	
Application ID	

## Closure

The responsible party must attach information demonstrating they have complied with all applicable closure requirements and any conditions or directives of the OCD. This demonstration should be in the form of a comprehensive report (electronic submittals in .pdf format are preferred) including a scaled site map, sampling diagrams, relevant field notes, photographs of any excavation prior to backfilling, laboratory data including chain of custody documents of final sampling, and a narrative of the remedial activities. Refer to 19.15.29.12 NMAC.

**Closure Report Attachment Checklist:** *Each of the following items must be included in the closure report.*

- ☒ A scaled site and sampling diagram as described in 19.15.29.11 NMAC
- ☒ Photographs of the remediated site prior to backfill or photos of the liner integrity if applicable (Note: appropriate OCD District office must be notified 2 days prior to liner inspection)
- ☒ Laboratory analyses of final sampling (Note: appropriate OCD District office must be notified 2 days prior to final sampling)
- ☒ Description of remediation activities

I hereby certify that the information given above is true and complete to the best of my knowledge and understand that pursuant to OCD rules and regulations all operators are required to report and/or file certain release notifications and perform corrective actions for releases which may endanger public health or the environment. The acceptance of a C-141 report by the OCD does not relieve the operator of liability should their operations have failed to adequately investigate and remediate contamination that pose a threat to groundwater, surface water, human health or the environment. In addition, OCD acceptance of a C-141 report does not relieve the operator of responsibility for compliance with any other federal, state, or local laws and/or regulations. The responsible party acknowledges they must substantially restore, reclaim, and re-vegetate the impacted surface area to the conditions that existed prior to the release or their final land use in accordance with 19.15.29.13 NMAC including notification to the OCD when reclamation and re-vegetation are complete.

Printed Name: Thomas Long Title: Senior Environmental Scientist

Signature:  Date: 2-8-2024

email: tjlong@eprod.com Telephone: (505) 599-2286

### OCD Only

Received by: \_\_\_\_\_ Date: \_\_\_\_\_

Closure approval by the OCD does not relieve the responsible party of liability should their operations have failed to adequately investigate and remediate contamination that poses a threat to groundwater, surface water, human health, or the environment nor does not relieve the responsible party of compliance with any other federal, state, or local laws and/or regulations.

Closure Approved by: \_\_\_\_\_ Date: \_\_\_\_\_

Printed Name: \_\_\_\_\_ Title: \_\_\_\_\_

**District I**  
1625 N. French Dr., Hobbs, NM 88240  
Phone:(575) 393-6161 Fax:(575) 393-0720  
**District II**  
811 S. First St., Artesia, NM 88210  
Phone:(575) 748-1283 Fax:(575) 748-9720  
**District III**  
1000 Rio Brazos Rd., Aztec, NM 87410  
Phone:(505) 334-6178 Fax:(505) 334-6170  
**District IV**  
1220 S. St Francis Dr., Santa Fe, NM 87505  
Phone:(505) 476-3470 Fax:(505) 476-3462

**State of New Mexico**  
**Energy, Minerals and Natural Resources**  
**Oil Conservation Division**  
**1220 S. St Francis Dr.**  
**Santa Fe, NM 87505**

QUESTIONS  
  
Action 312541

QUESTIONS

Operator: Enterprise Field Services, LLC PO Box 4324 Houston, TX 77210	OGRID:
	241602
	Action Number:
	312541
Action Type:	
[C-141] Reclamation Report C-141 (C-141-v-Reclamation)	

QUESTIONS

Prerequisites	
Incident ID (n#)	nAPP2316528547
Incident Name	NAPP2316528547 SOUTH EDDY CRYO PLANT @ 0
Incident Type	Fire
Incident Status	Reclamation Report Received
Incident Facility	[fAPP2122928745] Enterprise Carlsbad GS

Location of Release Source	
Please answer all the questions in this group.	
Site Name	SOUTH EDDY CRYO PLANT
Date Release Discovered	06/14/2023
Surface Owner	Federal

Incident Details	
Please answer all the questions in this group.	
Incident Type	Fire
Did this release result in a fire or is the result of a fire	Yes
Did this release result in any injuries	No
Has this release reached or does it have a reasonable probability of reaching a watercourse	No
Has this release endangered or does it have a reasonable probability of endangering public health	No
Has this release substantially damaged or will it substantially damage property or the environment	Yes
Is this release of a volume that is or may with reasonable probability be detrimental to fresh water	No

Nature and Volume of Release	
Material(s) released, please answer all that apply below. Any calculations or specific justifications for the volumes provided should be attached to the follow-up C-141 submission.	
Crude Oil Released (bbls) Details	Not answered.
Produced Water Released (bbls) Details	Not answered.
Is the concentration of chloride in the produced water >10,000 mg/l	Not answered.
Condensate Released (bbls) Details	Cause: Fire   Gas Plant   Condensate   Released: 0 BBL (Unknown Released Amount)   Recovered: 0 BBL   Lost: 0 BBL.
Natural Gas Vented (Mcf) Details	Not answered.
Natural Gas Flared (Mcf) Details	Not answered.
Other Released Details	Not answered.
Are there additional details for the questions above (i.e. any answer containing Other, Specify, Unknown, and/or Fire, or any negative lost amounts)	Not answered.

**District I**

1625 N. French Dr., Hobbs, NM 88240  
Phone:(575) 393-6161 Fax:(575) 393-0720

**District II**

811 S. First St., Artesia, NM 88210  
Phone:(575) 748-1283 Fax:(575) 748-9720

**District III**

1000 Rio Brazos Rd., Aztec, NM 87410  
Phone:(505) 334-6178 Fax:(505) 334-6170

**District IV**

1220 S. St Francis Dr., Santa Fe, NM 87505  
Phone:(505) 476-3470 Fax:(505) 476-3462

**State of New Mexico**  
**Energy, Minerals and Natural Resources**  
**Oil Conservation Division**  
**1220 S. St Francis Dr.**  
**Santa Fe, NM 87505**

QUESTIONS, Page 2

Action 312541

**QUESTIONS (continued)**

Operator: Enterprise Field Services, LLC PO Box 4324 Houston, TX 77210	OGRID:
	241602
	Action Number:
	312541
Action Type:	
[C-141] Reclamation Report C-141 (C-141-v-Reclamation)	

**QUESTIONS**

Nature and Volume of Release (continued)	
Is this a gas only submission (i.e. only significant Mcf values reported)	No, according to supplied volumes this does not appear to be a "gas only" report.
Was this a major release as defined by Subsection A of 19.15.29.7 NMAC	Yes
Reasons why this would be considered a submission for a notification of a major release	From paragraph A. "Major release" determine using: (1) an unauthorized release of a volume, excluding gases, of 25 barrels or more; (2) an unauthorized release of a volume that: (a) results in a fire or is the result of a fire; (d) substantially damages property or the environment.
With the implementation of the 19.15.27 NMAC (05/25/2021), venting and/or flaring of natural gas (i.e. gas only) are to be submitted on the C-129 form.	

**Initial Response**

The responsible party must undertake the following actions immediately unless they could create a safety hazard that would result in injury.

The source of the release has been stopped	False
The impacted area has been secured to protect human health and the environment	True
Released materials have been contained via the use of berms or dikes, absorbent pads, or other containment devices	False
All free liquids and recoverable materials have been removed and managed appropriately	False
If all the actions described above have not been undertaken, explain why	Fire is still ongoing.

Per Paragraph (4) of Subsection B of 19.15.29.8 NMAC the responsible party may commence remediation immediately after discovery of a release. If remediation has begun, please prepare and attach a narrative of actions to date in the follow-up C-141 submission. If remedial efforts have been successfully completed or if the release occurred within a lined containment area (see Subparagraph (a) of Paragraph (5) of Subsection A of 19.15.29.11 NMAC), please prepare and attach all information needed for closure evaluation in the follow-up C-141 submission.

I hereby certify that the information given above is true and complete to the best of my knowledge and understand that pursuant to OCD rules and regulations all operators are required to report and/or file certain release notifications and perform corrective actions for releases which may endanger public health or the environment. The acceptance of a C-141 report by the OCD does not relieve the operator of liability should their operations have failed to adequately investigate and remediate contamination that pose a threat to groundwater, surface water, human health or the environment. In addition, OCD acceptance of a C-141 report does not relieve the operator of responsibility for compliance with any other federal, state, or local laws and/or regulations.

I hereby agree and sign off to the above statement	Name: Thomas Long Title: Sr Field Environmental Scientist Email: tjlong@eprod.com Date: 02/08/2024
--	---

**District I**

1625 N. French Dr., Hobbs, NM 88240  
Phone:(575) 393-6161 Fax:(575) 393-0720

**District II**

811 S. First St., Artesia, NM 88210  
Phone:(575) 748-1283 Fax:(575) 748-9720

**District III**

1000 Rio Brazos Rd., Aztec, NM 87410  
Phone:(505) 334-6178 Fax:(505) 334-6170

**District IV**

1220 S. St Francis Dr., Santa Fe, NM 87505  
Phone:(505) 476-3470 Fax:(505) 476-3462

**State of New Mexico**  
**Energy, Minerals and Natural Resources**  
**Oil Conservation Division**  
**1220 S. St Francis Dr.**  
**Santa Fe, NM 87505**

QUESTIONS, Page 3

Action 312541

**QUESTIONS (continued)**

Operator: Enterprise Field Services, LLC PO Box 4324 Houston, TX 77210	OGRID:
	241602
	Action Number:
	312541
Action Type:	
[C-141] Reclamation Report C-141 (C-141-v-Reclamation)	

**QUESTIONS****Site Characterization**

Please answer all the questions in this group (only required when seeking remediation plan approval and beyond). This information must be provided to the appropriate district office no later than 90 days after the release discovery date.

What is the shallowest depth to groundwater beneath the area affected by the release in feet below ground surface (ft bgs)	Between 26 and 50 (ft.)
What method was used to determine the depth to ground water	NM OSE iWaters Database Search
Did this release impact groundwater or surface water	No
<b>What is the minimum distance, between the closest lateral extents of the release and the following surface areas:</b>	
A continuously flowing watercourse or any other significant watercourse	Between ½ and 1 (mi.)
Any lakebed, sinkhole, or playa lake (measured from the ordinary high-water mark)	Between 300 and 500 (ft.)
An occupied permanent residence, school, hospital, institution, or church	Between 1 and 5 (mi.)
A spring or a private domestic fresh water well used by less than five households for domestic or stock watering purposes	Between 1000 (ft.) and ½ (mi.)
Any other fresh water well or spring	Between 300 and 500 (ft.)
Incorporated municipal boundaries or a defined municipal fresh water well field	Between 1 and 5 (mi.)
A wetland	Between 100 and 200 (ft.)
A subsurface mine	Between 1 and 5 (mi.)
An (non-karst) unstable area	Between 1000 (ft.) and ½ (mi.)
Categorize the risk of this well / site being in a karst geology	Low
A 100-year floodplain	Between 1000 (ft.) and ½ (mi.)
Did the release impact areas not on an exploration, development, production, or storage site	No

**Remediation Plan**

Please answer all the questions that apply or are indicated. This information must be provided to the appropriate district office no later than 90 days after the release discovery date.

Requesting a remediation plan approval with this submission	Yes
Attach a comprehensive report demonstrating the lateral and vertical extents of soil contamination associated with the release have been determined, pursuant to 19.15.29.11 NMAC and 19.15.29.13 NMAC.	
Have the lateral and vertical extents of contamination been fully delineated	Yes
Was this release entirely contained within a lined containment area	No

**Soil Contamination Sampling:** (Provide the highest observable value for each, in milligrams per kilograms.)

Chloride (EPA 300.0 or SM4500 Cl B)	384
TPH (GRO+DRO+MRO) (EPA SW-846 Method 8015M)	10
GRO+DRO (EPA SW-846 Method 8015M)	10
BTEX (EPA SW-846 Method 8021B or 8260B)	0.3
Benzene (EPA SW-846 Method 8021B or 8260B)	0.1

Per Subsection B of 19.15.29.11 NMAC unless the site characterization report includes completed efforts at remediation, the report must include a proposed remediation plan in accordance with 19.15.29.12 NMAC, which includes the anticipated timelines for beginning and completing the remediation.

On what estimated date will the remediation commence	06/28/2023
On what date will (or did) the final sampling or liner inspection occur	06/28/2023
On what date will (or was) the remediation complete(d)	07/14/2023
What is the estimated surface area (in square feet) that will be reclaimed	16400
What is the estimated volume (in cubic yards) that will be reclaimed	0
What is the estimated surface area (in square feet) that will be remediated	16400
What is the estimated volume (in cubic yards) that will be remediated	0

These estimated dates and measurements are recognized to be the best guess or calculation at the time of submission and may (be) change(d) over time as more remediation efforts are completed.

The OCD recognizes that proposed remediation measures may have to be minimally adjusted in accordance with the physical realities encountered during remediation. If the responsible party has any need to significantly deviate from the remediation plan proposed, then it should consult with the division to determine if another remediation plan submission is required.



**District I**

1625 N. French Dr., Hobbs, NM 88240  
Phone:(575) 393-6161 Fax:(575) 393-0720

**District II**

811 S. First St., Artesia, NM 88210  
Phone:(575) 748-1283 Fax:(575) 748-9720

**District III**

1000 Rio Brazos Rd., Aztec, NM 87410  
Phone:(505) 334-6178 Fax:(505) 334-6170

**District IV**

1220 S. St Francis Dr., Santa Fe, NM 87505  
Phone:(505) 476-3470 Fax:(505) 476-3462

**State of New Mexico**  
**Energy, Minerals and Natural Resources**  
**Oil Conservation Division**  
**1220 S. St Francis Dr.**  
**Santa Fe, NM 87505**

QUESTIONS, Page 4

Action 312541

**QUESTIONS (continued)**

Operator: Enterprise Field Services, LLC PO Box 4324 Houston, TX 77210	OGRID:	241602
	Action Number:	312541
	Action Type:	[C-141] Reclamation Report C-141 (C-141-v-Reclamation)

**QUESTIONS**

<b>Remediation Plan (continued)</b>	
<i>Please answer all the questions that apply or are indicated. This information must be provided to the appropriate district office no later than 90 days after the release discovery date.</i>	
<b>This remediation will (or is expected to) utilize the following processes to remediate / reduce contaminants:</b>	
<i>(Select all answers below that apply.)</i>	
(Ex Situ) Excavation and <b>off-site</b> disposal (i.e. dig and haul, hydrovac, etc.)	<i>Not answered.</i>
(Ex Situ) Excavation and <b>on-site</b> remediation (i.e. On-Site Land Farms)	<i>Not answered.</i>
(In Situ) Soil Vapor Extraction	<i>Not answered.</i>
(In Situ) Chemical processing (i.e. Soil Shredding, Potassium Permanganate, etc.)	<i>Not answered.</i>
(In Situ) Biological processing (i.e. Microbes / Fertilizer, etc.)	<i>Not answered.</i>
(In Situ) Physical processing (i.e. Soil Washing, Gypsum, Disking, etc.)	<i>Not answered.</i>
Ground Water Abatement pursuant to 19.15.30 NMAC	<i>Not answered.</i>
OTHER (Non-listed remedial process)	<a href="#">Yes</a>
Other Non-listed Remedial Process. Please specify	<a href="#">No remediation required.</a>
<i>Per Subsection B of 19.15.29.11 NMAC unless the site characterization report includes completed efforts at remediation, the report must include a proposed remediation plan in accordance with 19.15.29.12 NMAC, which includes the anticipated timelines for beginning and completing the remediation.</i>	
I hereby certify that the information given above is true and complete to the best of my knowledge and understand that pursuant to OCD rules and regulations all operators are required to report and/or file certain release notifications and perform corrective actions for releases which may endanger public health or the environment. The acceptance of a C-141 report by the OCD does not relieve the operator of liability should their operations have failed to adequately investigate and remediate contamination that pose a threat to groundwater, surface water, human health or the environment. In addition, OCD acceptance of a C-141 report does not relieve the operator of responsibility for compliance with any other federal, state, or local laws and/or regulations.	
I hereby agree and sign off to the above statement	Name: Thomas Long Title: Sr Field Environmental Scientist Email: <a href="mailto:tjlong@eprod.com">tjlong@eprod.com</a> Date: 02/08/2024
<i>The OCD recognizes that proposed remediation measures may have to be minimally adjusted in accordance with the physical realities encountered during remediation. If the responsible party has any need to significantly deviate from the remediation plan proposed, then it should consult with the division to determine if another remediation plan submission is required.</i>	

**District I**  
1625 N. French Dr., Hobbs, NM 88240  
Phone:(575) 393-6161 Fax:(575) 393-0720  
**District II**  
811 S. First St., Artesia, NM 88210  
Phone:(575) 748-1283 Fax:(575) 748-9720  
**District III**  
1000 Rio Brazos Rd., Aztec, NM 87410  
Phone:(505) 334-6178 Fax:(505) 334-6170  
**District IV**  
1220 S. St Francis Dr., Santa Fe, NM 87505  
Phone:(505) 476-3470 Fax:(505) 476-3462

**State of New Mexico**  
**Energy, Minerals and Natural Resources**  
**Oil Conservation Division**  
**1220 S. St Francis Dr.**  
**Santa Fe, NM 87505**

QUESTIONS, Page 5  
  
Action 312541

QUESTIONS (continued)

Operator: Enterprise Field Services, LLC PO Box 4324 Houston, TX 77210	OGRID: 241602
	Action Number: 312541
	Action Type: [C-141] Reclamation Report C-141 (C-141-v-Reclamation)

QUESTIONS

<b>Deferral Requests Only</b>	
Only answer the questions in this group if seeking a deferral upon approval this submission. Each of the following items must be confirmed as part of any request for deferral of remediation.	
Requesting a deferral of the remediation closure due date with the approval of this submission	No

**District I**

1625 N. French Dr., Hobbs, NM 88240  
Phone:(575) 393-6161 Fax:(575) 393-0720

**District II**

811 S. First St., Artesia, NM 88210  
Phone:(575) 748-1283 Fax:(575) 748-9720

**District III**

1000 Rio Brazos Rd., Aztec, NM 87410  
Phone:(505) 334-6178 Fax:(505) 334-6170

**District IV**

1220 S. St Francis Dr., Santa Fe, NM 87505  
Phone:(505) 476-3470 Fax:(505) 476-3462

**State of New Mexico**  
**Energy, Minerals and Natural Resources**  
**Oil Conservation Division**  
**1220 S. St Francis Dr.**  
**Santa Fe, NM 87505**

QUESTIONS, Page 6

Action 312541

**QUESTIONS (continued)**

Operator: Enterprise Field Services, LLC PO Box 4324 Houston, TX 77210	OGRID:
	241602
	Action Number:
	312541
Action Type:	
[C-141] Reclamation Report C-141 (C-141-v-Reclamation)	

**QUESTIONS**

Sampling Event Information	
Last sampling notification (C-141N) recorded	312571
Sampling date pursuant to Subparagraph (a) of Paragraph (1) of Subsection D of 19.15.29.12 NMAC	06/28/2023
What was the (estimated) number of samples that were to be gathered	15
What was the sampling surface area in square feet	200

**Remediation Closure Request**

*Only answer the questions in this group if seeking remediation closure for this release because all remediation steps have been completed.*

Requesting a remediation closure approval with this submission	Yes
Have the lateral and vertical extents of contamination been fully delineated	Yes
Was this release entirely contained within a lined containment area	No
All areas reasonably needed for production or subsequent drilling operations have been stabilized, returned to the sites existing grade, and have a soil cover that prevents ponding of water, minimizing dust and erosion	Yes
What was the total surface area (in square feet) remediated	16400
What was the total volume (cubic yards) remediated	0
All areas not reasonably needed for production or subsequent drilling operations have been reclaimed to contain a minimum of four feet of non-waste contain earthen material with concentrations less than 600 mg/kg chlorides, 100 mg/kg TPH, 50 mg/kg BTEX, and 10 mg/kg Benzene	Yes
What was the total surface area (in square feet) reclaimed	16400
What was the total volume (in cubic yards) reclaimed	0
Summarize any additional remediation activities not included by answers (above)	No remediation required.

*The responsible party must attach information demonstrating they have complied with all applicable closure requirements and any conditions or directives of the OCD. This demonstration should be in the form of a comprehensive report (in .pdf format) including a scaled site map, sampling diagrams, relevant field notes, photographs of any excavation prior to backfilling, laboratory data including chain of custody documents of final sampling, and a narrative of the remedial activities. Refer to 19.15.29.12 NMAC.*

I hereby certify that the information given above is true and complete to the best of my knowledge and understand that pursuant to OCD rules and regulations all operators are required to report and/or file certain release notifications and perform corrective actions for releases which may endanger public health or the environment. The acceptance of a C-141 report by the OCD does not relieve the operator of liability should their operations have failed to adequately investigate and remediate contamination that pose a threat to groundwater, surface water, human health or the environment. In addition, OCD acceptance of a C-141 report does not relieve the operator of responsibility for compliance with any other federal, state, or local laws and/or regulations. The responsible party acknowledges they must substantially restore, reclaim, and re-vegetate the impacted surface area to the conditions that existed prior to the release or their final land use in accordance with 19.15.29.13 NMAC including notification to the OCD when reclamation and re-vegetation are complete.

I hereby agree and sign off to the above statement	Name: Thomas Long Title: Sr Field Environmental Scientist Email: tjlong@eprod.com Date: 02/08/2024
--	---

**District I**

1625 N. French Dr., Hobbs, NM 88240  
Phone:(575) 393-6161 Fax:(575) 393-0720

**District II**

811 S. First St., Artesia, NM 88210  
Phone:(575) 748-1283 Fax:(575) 748-9720

**District III**

1000 Rio Brazos Rd., Aztec, NM 87410  
Phone:(505) 334-6178 Fax:(505) 334-6170

**District IV**

1220 S. St Francis Dr., Santa Fe, NM 87505  
Phone:(505) 476-3470 Fax:(505) 476-3462

**State of New Mexico**  
**Energy, Minerals and Natural Resources**  
**Oil Conservation Division**  
**1220 S. St Francis Dr.**  
**Santa Fe, NM 87505**

QUESTIONS, Page 7

Action 312541

**QUESTIONS (continued)**

Operator: Enterprise Field Services, LLC PO Box 4324 Houston, TX 77210	OGRID:	241602
	Action Number:	312541
	Action Type:	[C-141] Reclamation Report C-141 (C-141-v-Reclamation)

**QUESTIONS**

<b>Reclamation Report</b>	
<i>Only answer the questions in this group if all reclamation steps have been completed.</i>	
Requesting a reclamation approval with this submission	Yes
What was the total reclamation surface area (in square feet) for this site	16400
What was the total volume of replacement material (in cubic yards) for this site	0
<i>Per Paragraph (1) of Subsection D of 19.15.29.13 NMAC the reclamation must contain a minimum of four feet of non-waste containing, uncontaminated, earthen material with chloride concentrations less than 600 mg/kg as analyzed by EPA Method 300.0, or other test methods approved by the division. The soil cover must include a top layer, which is either the background thickness of topsoil or one foot of suitable material to establish vegetation at the site, whichever is greater.</i>	
Is the soil top layer complete and is it suitable material to establish vegetation	Yes
On what (estimated) date will (or was) the reseeding commence(d)	06/01/2024
Summarize any additional reclamation activities not included by answers (above)	No remediation required.
<i>The responsible party must attach information demonstrating they have complied with all applicable reclamation requirements and any conditions or directives of the OCD. This demonstration should be in the form of attachments (in .pdf format) including a scaled site map, any proposed reseeding plans or relevant field notes, photographs of reclaimed area, and a narrative of the reclamation activities. Refer to 19.15.29.13 NMAC.</i>	
I hereby certify that the information given above is true and complete to the best of my knowledge and understand that pursuant to OCD rules and regulations all operators are required to report and/or file certain release notifications and perform corrective actions for releases which may endanger public health or the environment. The acceptance of a C-141 report by the OCD does not relieve the operator of liability should their operations have failed to adequately investigate and remediate contamination that pose a threat to groundwater, surface water, human health or the environment. In addition, OCD acceptance of a C-141 report does not relieve the operator of responsibility for compliance with any other federal, state, or local laws and/or regulations. The responsible party acknowledges they must substantially restore, reclaim, and re-vegetate the impacted surface area to the conditions that existed prior to the release or their final land use in accordance with 19.15.29.13 NMAC including notification to the OCD when reclamation and re-vegetation are complete.	
I hereby agree and sign off to the above statement	Name: Thomas Long Title: Sr Field Environmental Scientist Email: tjlong@eprod.com Date: 02/08/2024



**District I**  
1625 N. French Dr., Hobbs, NM 88240  
Phone:(575) 393-6161 Fax:(575) 393-0720  
**District II**  
811 S. First St., Artesia, NM 88210  
Phone:(575) 748-1283 Fax:(575) 748-9720  
**District III**  
1000 Rio Brazos Rd., Aztec, NM 87410  
Phone:(505) 334-6178 Fax:(505) 334-6170  
**District IV**  
1220 S. St Francis Dr., Santa Fe, NM 87505  
Phone:(505) 476-3470 Fax:(505) 476-3462

**State of New Mexico**  
**Energy, Minerals and Natural Resources**  
**Oil Conservation Division**  
**1220 S. St Francis Dr.**  
**Santa Fe, NM 87505**

QUESTIONS, Page 8  
  
Action 312541

QUESTIONS (continued)

Operator: Enterprise Field Services, LLC PO Box 4324 Houston, TX 77210	OGRID: 241602
	Action Number: 312541
	Action Type: [C-141] Reclamation Report C-141 (C-141-v-Reclamation)

QUESTIONS

<b>Revegetation Report</b>	
<i>Only answer the questions in this group if all surface restoration, reclamation and re-vegetation obligations have been satisfied.</i>	
Requesting a restoration complete approval with this submission	No
<i>Per Paragraph (4) of Subsection (D) of 19.15.29.13 NMAC for any major or minor release containing liquids, the responsible party must notify the division when reclamation and re-vegetation are complete.</i>	

**District I**  
1625 N. French Dr., Hobbs, NM 88240  
Phone:(575) 393-6161 Fax:(575) 393-0720  
**District II**  
811 S. First St., Artesia, NM 88210  
Phone:(575) 748-1283 Fax:(575) 748-9720  
**District III**  
1000 Rio Brazos Rd., Aztec, NM 87410  
Phone:(505) 334-6178 Fax:(505) 334-6170  
**District IV**  
1220 S. St Francis Dr., Santa Fe, NM 87505  
Phone:(505) 476-3470 Fax:(505) 476-3462

State of New Mexico  
Energy, Minerals and Natural Resources  
Oil Conservation Division  
1220 S. St Francis Dr.  
Santa Fe, NM 87505

CONDITIONS  
  
Action 312541

CONDITIONS

Operator: Enterprise Field Services, LLC PO Box 4324 Houston, TX 77210	OGRID: 241602
	Action Number: 312541
	Action Type: [C-141] Reclamation Report C-141 (C-141-v-Reclamation)

CONDITIONS

Created By	Condition	Condition Date
amaxwell	Remediation and reclamation approved.	2/19/2024
amaxwell	When submitting a revegetation report, include an Executive Summary of the revegetation activities including: Seed mix; Method of seeding; Dates of when the release area was reseeded; Information pertinent to inspections; Information about any amendments added to the soil; Information on how the vegetative cover established meets the life-form ratio of plus or minus fifty percent of pre-disturbance levels and a total percent plant cover of at least seventy percent of pre-disturbance levels, excluding noxious weeds per 19.15.29.13 D.(3) NMAC; and any additional information. • Scaled Site Map including area that was revegetated in square feet; • Pictures of the revegetated areas during reseeding activities, inspections, and final pictures when revegetation is achieved.	2/19/2024