

Electronic C-141 Supplemental Documentation

Goodnight Midstream Permian, LLC Cheddar RP NMOCD Siting

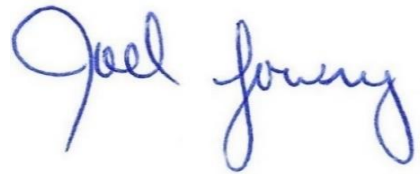
Lea County, New Mexico
Unit Letter L, Section 28, Township 21 South, Range 32 East
Latitude 32.446324 North, Longitude 103.687501 West
NMOCD Reference No. N/A

Prepared By:

Etech Environmental & Safety Solutions, Inc.
2617 W. Marland
Hobbs, New Mexico 88240



Matthew Grieco



Joel W. Lowry



Midland • San Antonio • Lubbock • Hobbs • Lafayette

SUPPLEMENTAL SITE CHARACTERIZATION ANSWERS

What is the shallowest depth to groundwater beneath the area affected by the release in feet below ground surface (ft bgs)?

Between 100 and 500 (ft.)

Please reference depth to groundwater information packet provided in the C-141 Closure Report

What method was used to determine the depth to groundwater?

Estimate or Other

Please reference depth to groundwater information packet provided in the C-141 Closure Report. It is possible that one or more methods were utilized to make a reasonable determination of probable depth to groundwater.

Did this release impact groundwater or surface water?

Please reference the attached C-141 Closure Report.

What is the minimum distance between the closest lateral extents of the release and the following surface areas?

A continuously flowing watercourse or any other significant watercourse?

Between 1 and 5 (mi.)

Please reference Figure 1 in the attached C-141 Closure Report and/or the attached Figure.

Any lakebed, sinkhole, or playa lake (measured from the ordinary high-water mark)?

Between 1 and 5 (mi.)

Please reference Figure 2 in the attached C-141 Closure Report and/or the attached Figure.

An occupied permanent residence, school, hospital, institution or church?

Greater than 5 (mi.)

Please reference Figure 2 in the attached C-141 Closure Report and/or the attached Figure.

A spring or a private domestic fresh water well used by less than five households for domestic or stock watering purposes?

Between 1 and 5 (mi.)

Please reference Figure 2 in the attached C-141 Closure Report and/or the attached Figure.

Any other fresh water well or spring?

Between 1 and 5 (mi.)

Please reference Figure 2 in the attached C-141 Closure Report and/or the attached Figure.

Incorporated municipal boundaries or a defined municipal fresh water well field?

Greater than 5 (mi.)

Please reference Figure 1 in the attached C-141 Closure Report and/or the attached Figure.

A wetland?

Between 1 and 5 (mi.)

Please reference Figure 2 in the attached C-141 Closure Report and/or the attached Figure.

A subsurface mine?

Greater than 5 (mi.)

Please reference Figure 2 in the attached C-141 Closure Report and/or the attached Figure.

A (non-karst) unstable area?

Between 1 and 5 (mi.)

Please reference Figure 2 in the attached C-141 Closure Report and/or the attached Figure.

Categorize the risk of this well/site being in a karst geology.

Low

Please reference Figure 2 in the attached C-141 Closure Report and/or the attached Figure.

A 100-year floodplain

Greater than 5 (mi.)

Please reference Figure 2 in the attached C-141 Closure Report and/or the attached Figure.

Did the release impact areas not on an exploration, development, production, or storage site?

Please reference Figure 3 in the attached C-141 Closure Report and/or the attached Figure.

Supplemental Map Index

- 1 - Site Location
- 2 - OSE Wells and Well Information
- 3 - USGS Wells and Well Information
- 4 - Inferred Depth to Groundwater
- 5 - Nearest Significant Watercourse
- 6 - Nearest Lakebed, Sinkhole, or Playa
- 7 - Nearest Residence, School, Hospital, Institution or Church
- 8 - Nearest Fresh Water Well
- 9 - Nearest Incorporated Municipal Boundary
- 10 - Nearest Wetland
- 11 - Nearest Subsurface Mine
- 12 - Local Karst Potential
- 13 - Local Flood Hazards



Basemap Gallery

Imagery

Imagery with Labels

National Geographic

OpenStreetMap

Streets

Terrain with Labels

Topographic

USA Topo Maps

USGS National Map

Topographic

+

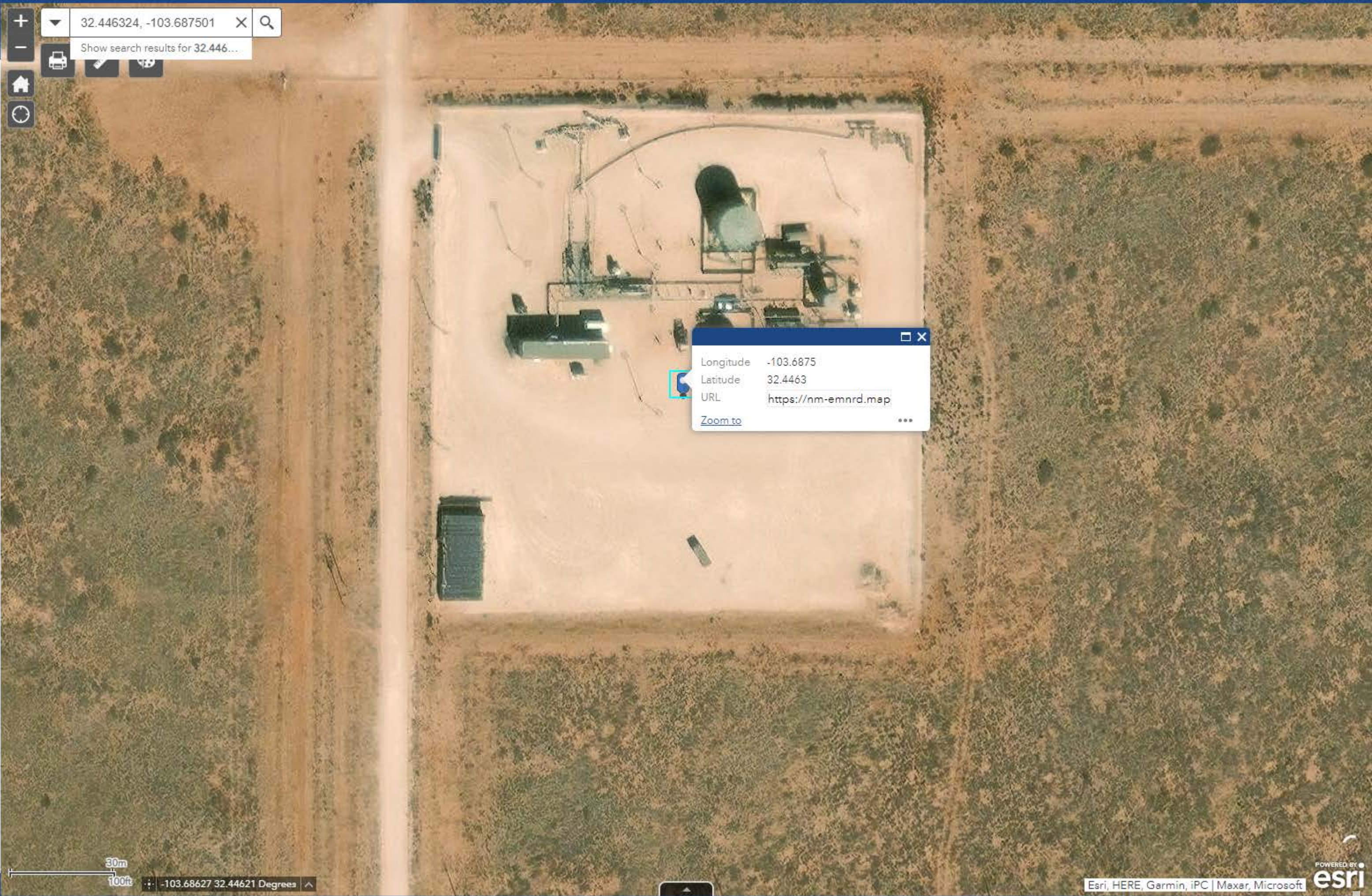
▼

32.446324, -103.687501

×

Q

Show search results for 32.446...



✕

Longitude -103.6875

Latitude 32.4463

URL <https://nm-emnrd.map>

Zoom to ...

30m

100ft

◁ ▷

-103.68627 32.44621 Degrees

^

Layer List

Layers

OSE Water PODs

...

Active

Pending

Changed Location of Well

Inactive

Plugged

Capped

Unknown

M2.5+ Earthquakes (USGS 30-day)

...

NM Oil and Gas Wells

...

USGS Groundwater wells

...

Induced Seismicity Area

...

Permian Basin Karst Areas

...

BLM Oil Gas Leases Case Disp

...

BLM Oil Gas Leases Production Status

...

BLM Fluid Minerals Case

...

BLM FM Agreements Case Disp

...

BLM FM Agreements Production Status

...

BLM FM Participating Areas Case Disp

...

NM SLO Oil and Gas Leases

...

NM SLO Participating Area and Unit Agreement Boundaries

...

Political Boundaries and Transportation

...

Mineral and Surface Ownership

...

32.446324, -103.687501

Show search results for 32.446...

Measurement

Miles

Measurement Result

2.21 Miles

Clear

Press CTRL to enable snapping

1mi 2km -103.68903 32.48030 Degrees

A map of the Hat Mesa Gas Field in New Mexico. The map displays various wells, some marked with colored dots (blue, green, yellow, orange, red, black) corresponding to their status. A blue line connects two green dots, representing a measurement of 2.21 miles. The map includes topographic features like contour lines and labels for roads (Hat Mesa Ln, Salt Ln, Bookey Ln, Campbell Rd, Louis W). Elevation points are marked with values like 3739 ft, 3750 ft, 3917 ft, 3923 ft, 3847 ft, 3750 ft, 3775 ft, 3564 ft, and 3500 ft. The map is overlaid with a grid.

Bureau of Land Management, Texas Parks & Wildlife, Esri, HERE, Garmin, INCREMENT P, USGS, METI/NASA, NGA, ...

POWERED BY esri

Released to Imaging: 4/2/2024 10:01:18 AM

All rights reserved



New Mexico Office of the State Engineer

Point of Diversion Summary

</

The data is furnished by the NMOSE/ISC and is accepted by the recipient with the expressed understanding that the OSE/ISC make no warranties, expressed or implied, concerning the accuracy, completeness, reliability, usability, or suitability for any particular purpose of the data.

1/18/24 10:01 AM

POINT OF DIVERSION SUMMARY



WELL RECORD & LOG

OFFICE OF THE STATE ENGINEER

www.ose.state.nm.us

1. GENERAL AND WELL LOCATION	OSE POD NO. (WELL NO.) CP-1701-POD1		WELL TAG ID NO.		OSE FILE NO(S)		
	WELL OWNER NAME(S) The Jimmy Mills GST and 2005 GST Trusts				PHONE (OPTIONAL)		
	WELL OWNER MAILING ADDRESS c/o Stacey Mills PO Box 1359				CITY Loving	STATE NM	
					ZIP 88256-1358		
2. DRILLING & CASING INFORMATION	WELL LOCATION (FROM GPS)	DEGREES LATITUDE 32	MINUTES 26	SECONDS 0.5	N		
		LONGITUDE 103	39	10.1	W		
	* ACCURACY REQUIRED: ONE TENTH OF A SECOND						
	* DATUM REQUIRED: WGS 84						
DESCRIPTION RELATING WELL LOCATION TO STREET ADDRESS AND COMMON LANDMARKS - PLSS (SECTION, TOWNSHIP, RANGE) WHERE AVAILABLE							
3. ANNULAR MATERIAL	LICENSE NO. WD1706		NAME OF LICENSED DRILLER Bryce Wallace			NAME OF WELL DRILLING COMPANY Elite Drillers Corporation	
	DRILLING STARTED 10/15/18	DRILLING ENDED 11/29/18	DEPTH OF COMPLETED WELL (FT) 840	BORE HOLE DEPTH (FT) 880	DEPTH WATER FIRST ENCOUNTERED (FT) 560		
	COMPLETED WELL IS: <input checked="" type="checkbox"/> ARTESIAN <input type="checkbox"/> DRY HOLE <input type="checkbox"/> SHALLOW (UNCONFINED)				STATIC WATER LEVEL IN COMPLETED WELL (FT) 457		
	DRILLING FLUID: <input checked="" type="checkbox"/> AIR <input type="checkbox"/> MUD ADDITIVES - SPECIFY:						
	DRILLING METHOD: <input checked="" type="checkbox"/> ROTARY <input type="checkbox"/> HAMMER <input type="checkbox"/> CABLE TOOL <input type="checkbox"/> OTHER - SPECIFY:						
	DEPTH (feet bgl)		BORE HOLE DIAM (inches)	CASING MATERIAL AND/OR GRADE (include each casing string, and note sections of screen)	CASING CONNECTION TYPE (add coupling diameter)	CASING INSIDE DIAM. (inches)	CASING WALL THICKNESS (inches)
	FROM	TO					
	0	20	12.75	ASTM53 Grade B Steel	N/A	12.57	.188
	+2	460	12.25	ASTM53 Grade B steel	Welded	6.065	.28
	460	840	12.25	SDR17 PVC	Spline	6	SDR17
3. ANNULAR MATERIAL	DEPTH (feet bgl)		BORE HOLE DIAM. (inches)	LIST ANNULAR SEAL MATERIAL AND GRAVEL PACK SIZE-RANGE BY INTERVAL	AMOUNT (cubic feet)	METHOD OF PLACEMENT	
	FROM	TO					
	0	20	12.75	Portland I/II Cement	17	Pour	
	0	453	12.25	Baroid Benseal Grout	247	Trimmic	
	453	860	12.25	8/16 Silica Sand	285	Pour	

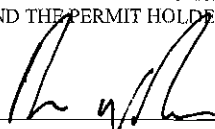
FOR OSE INTERNAL USE

WR-20 WELL RECORD & LOG (Version 06/30/17)

FILE NO.	CP-1701	POD NO.	1	TRN NO.	619305
LOCATION	Expi	215.32E.35.31	WELL TAG ID NO.		PAGE 1 OF 2

4. HYDROGEOLOGIC LOG OF WELL	DEPTH (feet bgl)		THICKNESS (feet)	COLOR AND TYPE OF MATERIAL ENCOUNTERED - INCLUDE WATER-BEARING CAVITIES OR FRACTURE ZONES (attach supplemental sheets to fully describe all units)	WATER BEARING? (YES / NO)		ESTIMATED YIELD FOR WATER- BEARING ZONES (gpm)
	FROM	TO					
	0	5	5	Topsoil	Y	N	
	5	8	3	Caliche	Y	N	
	8	80	72	Tan/Red sandy caliche	Y	N	
	80	190	110	Red clay	Y	N	
	190	400	210	Tan/Red sandstone	Y	N	
	400	560	160	Red siltstone	Y	N	
	560	575	15	Red siltstone/Gyp	✓ Y	N	5.00
	575	750	175	Red siltstone	Y	N	
	750	770	20	Red siltstone/Gyp	✓ Y	N	25.00
	770	840	70	Red siltstone	Y	N	
	840	880	40	Red Shale	Y	N	
					Y	N	
					Y	N	
					Y	N	
					Y	N	
					Y	N	
					Y	N	
					Y	N	
					Y	N	
					Y	N	
					Y	N	
METHOD USED TO ESTIMATE YIELD OF WATER-BEARING STRATA:					TOTAL ESTIMATED WELL YIELD (gpm):		
<input checked="" type="checkbox"/> PUMP <input type="checkbox"/> AIR LIFT <input type="checkbox"/> BAILER <input type="checkbox"/> OTHER - SPECIFY:					30.00		

5. TEST; RIG SUPERVISION	WELL TEST	TEST RESULTS - ATTACH A COPY OF DATA COLLECTED DURING WELL TESTING, INCLUDING DISCHARGE METHOD, START TIME, END TIME, AND A TABLE SHOWING DISCHARGE AND DRAWDOWN OVER THE TESTING PERIOD.
	MISCELLANEOUS INFORMATION:	
	PRINT NAME(S) OF DRILL RIG SUPERVISOR(S) THAT PROVIDED ONSITE SUPERVISION OF WELL CONSTRUCTION OTHER THAN LICENSEE:	

6. SIGNATURE	THE UNDERSIGNED HEREBY CERTIFIES THAT, TO THE BEST OF HIS OR HER KNOWLEDGE AND BELIEF, THE FOREGOING IS A TRUE AND CORRECT RECORD OF THE ABOVE DESCRIBED HOLE AND THAT HE OR SHE WILL FILE THIS WELL RECORD WITH THE STATE ENGINEER AND THE PERMIT HOLDER WITHIN 20 DAYS AFTER COMPLETION OF WELL DRILLING:	
	 Bryce Wallace	12/10/2018
	SIGNATURE OF DRILLER / PRINT SIGNED NAME	DATE

FOR OSE INTERNAL USE

WR-20 WELL RECORD & LOG (Version 06/30/2017)

FILE NO. CP-1701	POD NO. 1	TRN NO. 419305
LOCATION Expl 215.32E.35.31	WELL TAG ID NO. —	PAGE 2 OF 2

Layers

-
- The screenshot displays a web-based mapping application. At the top left, a search bar shows coordinates 32.446324, -103.687501. Below it, a toolbar contains icons for zooming, home, and other map functions. The main map area shows a topographic view of the Hat Mesa Gas Field. A blue line connects two points on the map, with a measurement tool overlay showing a distance of 4.93 Miles. The measurement tool also includes a 'Clear' button and a note to 'Press CTRL to enable snapping'. Various data points are labeled on the map, including well IDs, dates, and DTW values. For example, one point is labeled '322851103365201 2/4/1971 DTW = 117.5'. Another point is labeled '322333103461301 9/12/1972 DTW = 146.3'. The map also shows elevation contours and labels for 'HAT MESA GAS FIELD' and 'HAT MESA'. A scale bar at the bottom left indicates 1 mile and 2 kilometers. The bottom right corner features the Esri logo and a list of data sources: USGS, Bureau of Land Management, Texas Parks & Wildlife, Esri, HERE, Garmin, INCREMENT P, USGS, METI/NASA,...



[USGS Home](#)
[Contact USGS](#)
[Search USGS](#)

National Water Information System: Web Interface

USGS Water Resources

Data Category:

Groundwater

Geographic Area:

United States

GO

[Click for News Bulletins](#)

[Groundwater levels for the Nation](#)

! Important: [Next Generation Monitoring Location Page](#)

Search Results -- 1 sites found

Agency code = usgs

site_no list =

- 322851103365201

Minimum number of levels = 1

[Save file of selected sites](#) to local disk for future upload

USGS 322851103365201 21S.33E.18.12314

Available data for this site

Groundwater: Field measurements

GO

Lea County, New Mexico

Hydrologic Unit Code 13070007

Latitude 32°29'06.6", Longitude 103°37'00.6" NAD83

Land-surface elevation 3,883 feet above NAVD88

This well is completed in the Other aquifers (N9999OTHER) national aquifer.

This well is completed in the Alluvium, Bolson Deposits and Other Surface Deposits (110AVMB) local aquifer.

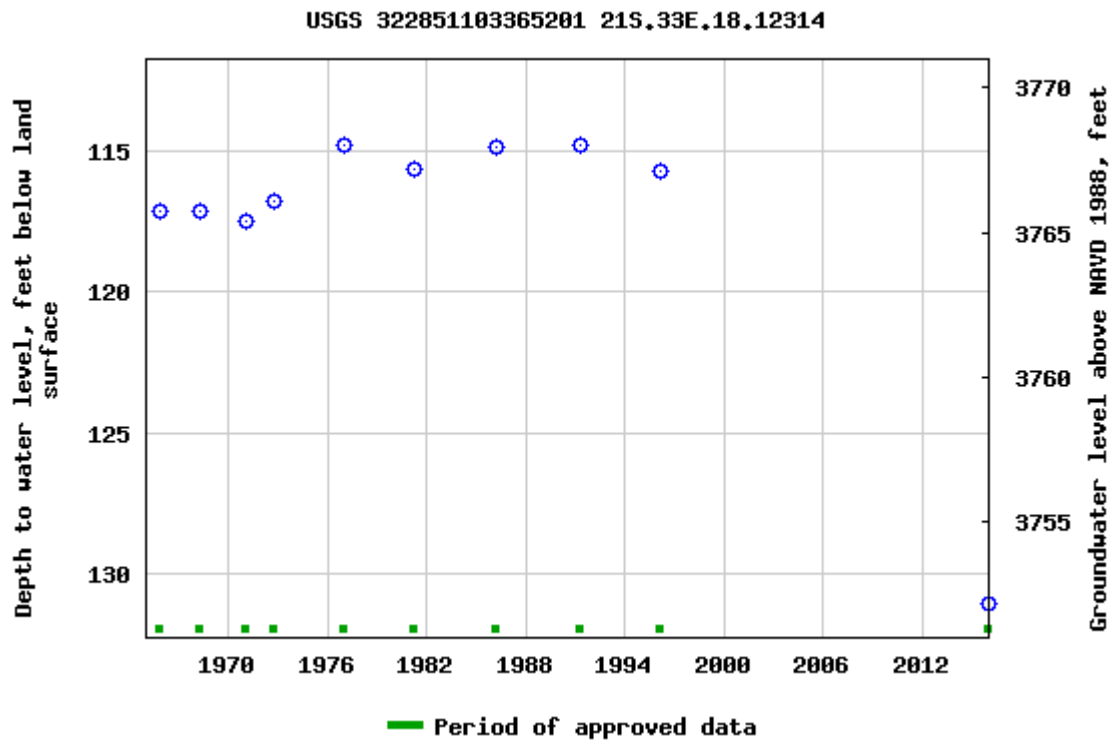
Output formats

[Table of data](#)

[Tab-separated data](#)

[Graph of data](#)

[Reselect period](#)



Breaks in the plot represent a gap of at least one year between field measurements.

[Download a presentation-quality graph](#)

[Questions or Comments](#)

[Automated retrievals](#)

[Help](#)

[Data Tips](#)

[Explanation of terms](#)

[Subscribe for system changes](#)

[News](#)

[Accessibility](#)

[FOIA](#)

[Privacy](#)

[Policies and Notices](#)

[U.S. Department of the Interior](#) | [U.S. Geological Survey](#)

Title: Groundwater for USA: Water Levels

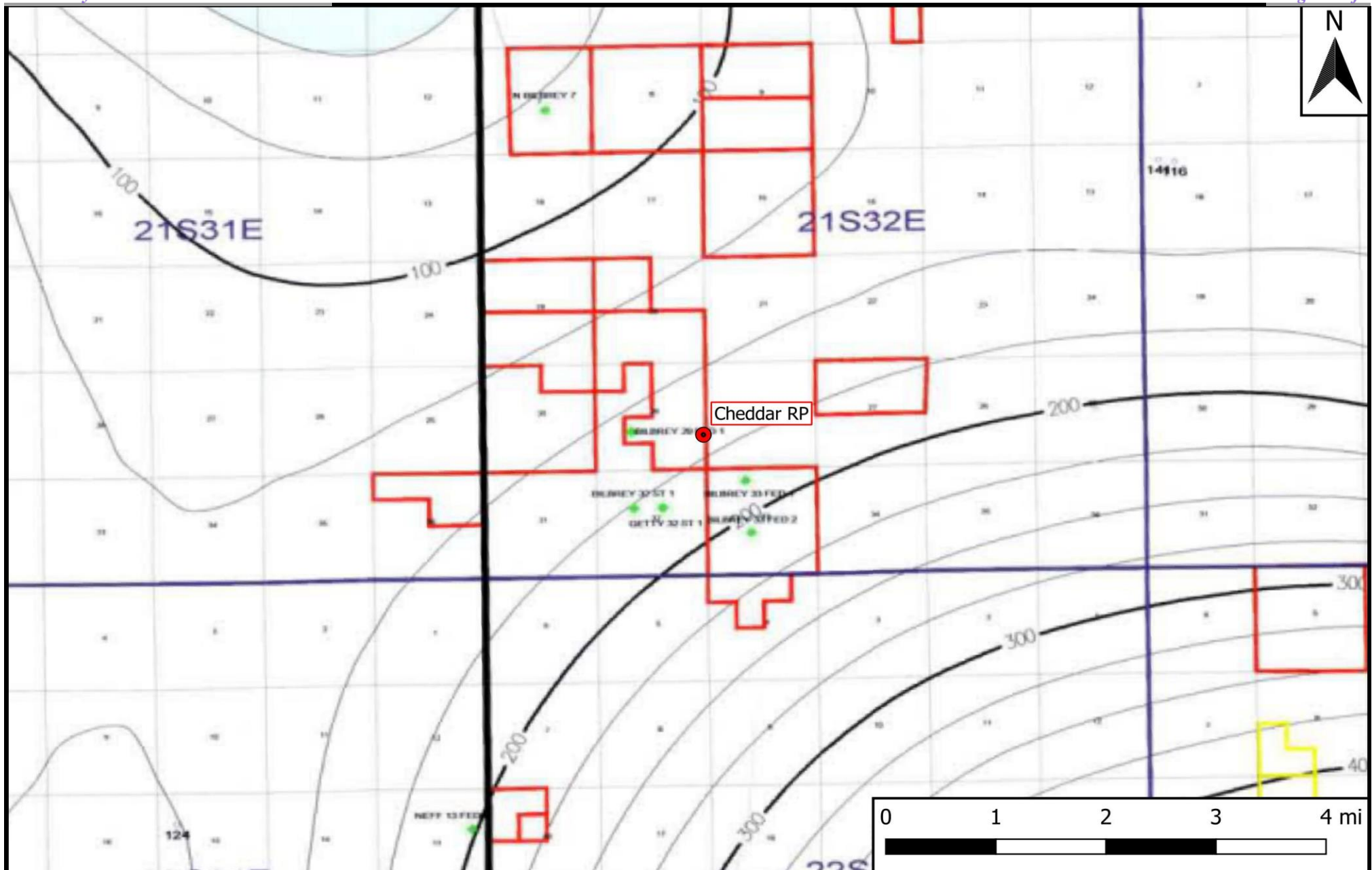
URL: <https://nwis.waterdata.usgs.gov/nwis/gwlevels?>



Page Contact Information: [USGS Water Data Support Team](#)

Page Last Modified: 2024-01-18 12:07:14 EST

0.83 0.66 nadww02



Legend

● Site Location

Figure 4

Inferred Depth to Groundwater Trend Map
 Goodnight Midstream Permian, LLC
 Cheddar
 GPS: 32.447091, -103.688559
 Eddy County

eTECH
 Environmental & Safety Solutions, Inc.

Drafted: mag

Checked: jwl

Date: 8/23/21

Layer List

Layers

☐ OSE Water PODs

...

☐ M2.5+ Earthquakes (USGS 30-day)

...

☐ NM Oil and Gas Wells

...

☐ USGS Groundwater wells

...

☐ Induced Seismicity Area

...

☐ Permian Basin Karst Areas

...

☐ BLM Oil Gas Leases Case Disp

...

☐ BLM Oil Gas Leases Production Status

...

☐ BLM Fluid Minerals Case

...

☐ BLM FM Agreements Case Disp

...

☐ BLM FM Agreements Production Status

...

☐ BLM FM Participating Areas Case Disp

...

☐ NM SLO Oil and Gas Leases

...

☐ NM SLO Participating Area and Unit Agreement Boundaries

...

☐ Political Boundaries and Transportation

...

☐ Mineral and Surface Ownership

...

☒ Hydrology

...

☒ NMED Drinking Water Systems

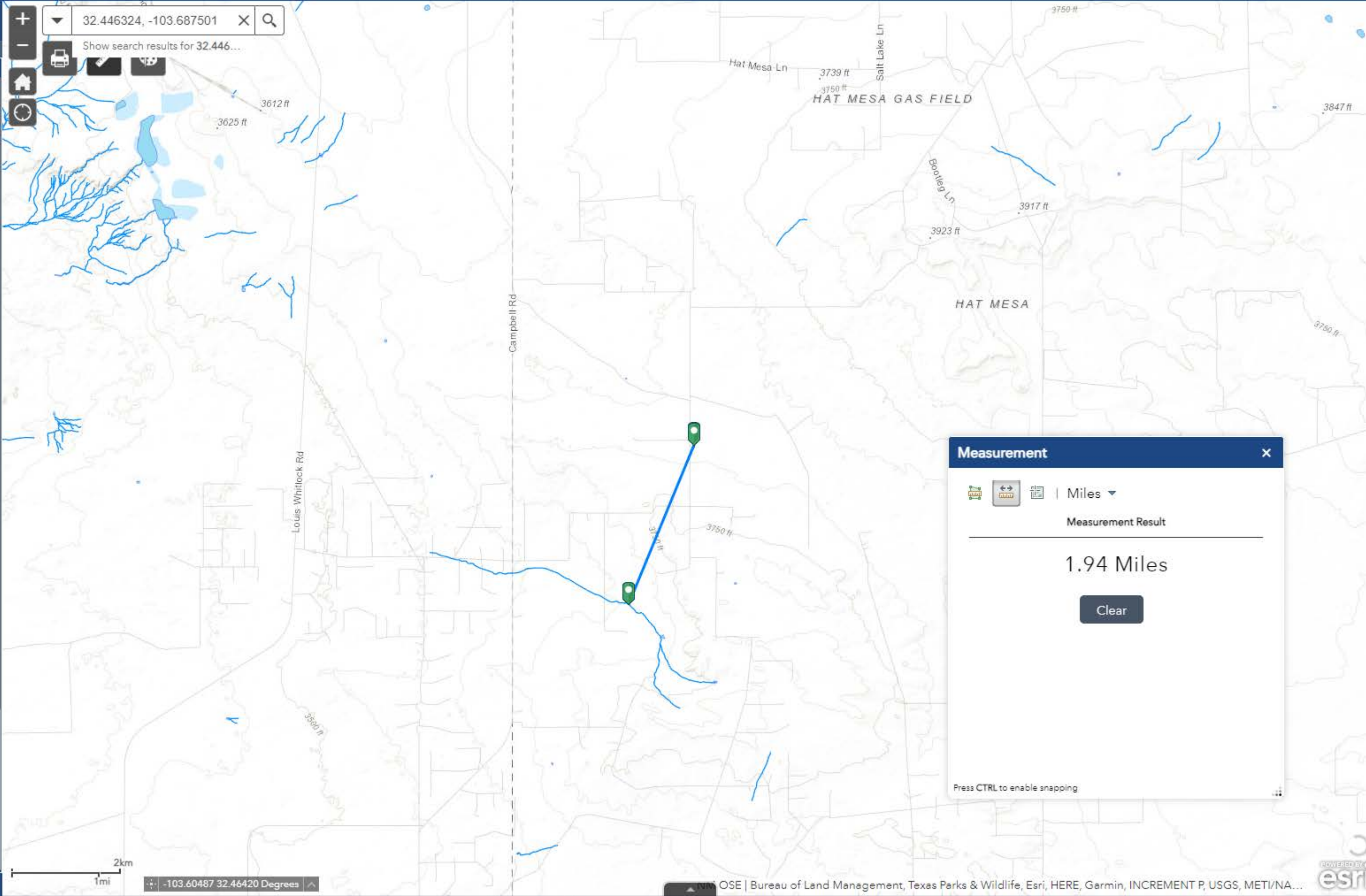
...

☒ OSE Streams

...

☒ OSE Probable Playas

...



Measurement

Miles

Measurement Result

1.94 Miles

Clear

Press CTRL to enable snapping

Layer List

☐

Permian Basin Karst Areas

...

☐

BLM Oil Gas Leases Case Disp

...

☐

BLM Oil Gas Leases Production Status

...

☐

BLM Fluid Minerals Case

...

☐

BLM FM Agreements Case Disp

...

☐

BLM FM Agreements Production Status

...

☐

BLM FM Participating Areas Case Disp

...

☐

NM SLO Oil and Gas Leases

...

☐

NM SLO Participating Area and Unit Agreement Boundaries

...

☐

Political Boundaries and Transportation

...

☐

Mineral and Surface Ownership

...

☒

Hydrology

...

☒

NMED Drinking Water Systems

...

▲

OSE Streams

...

OSE Probable Playas

...

OSW Water Bodys

...

☐

OCD Districts

...

☐

NM Oil and Gas Production Areas

...

☐

Public Land Survey System (PLSS)

...

32.446324, -103.687501

×

Show search results for 32.446...

Measurement

×

Miles

▼

Measurement Result

1.07 Miles

Clear

Press CTRL to enable snapping

Released to Imaging: 4/2/2024 10:01:18 AM

All rights reserved

NM OSE | Bureau of Land Management, Texas Parks & Wildlife, Esri, HERE, Garmin, INCREMENT P, USGS, METI/NA...



Basemap Gallery

Imagery

Imagery with Labels

National Geographic

OpenStreetMap

Streets

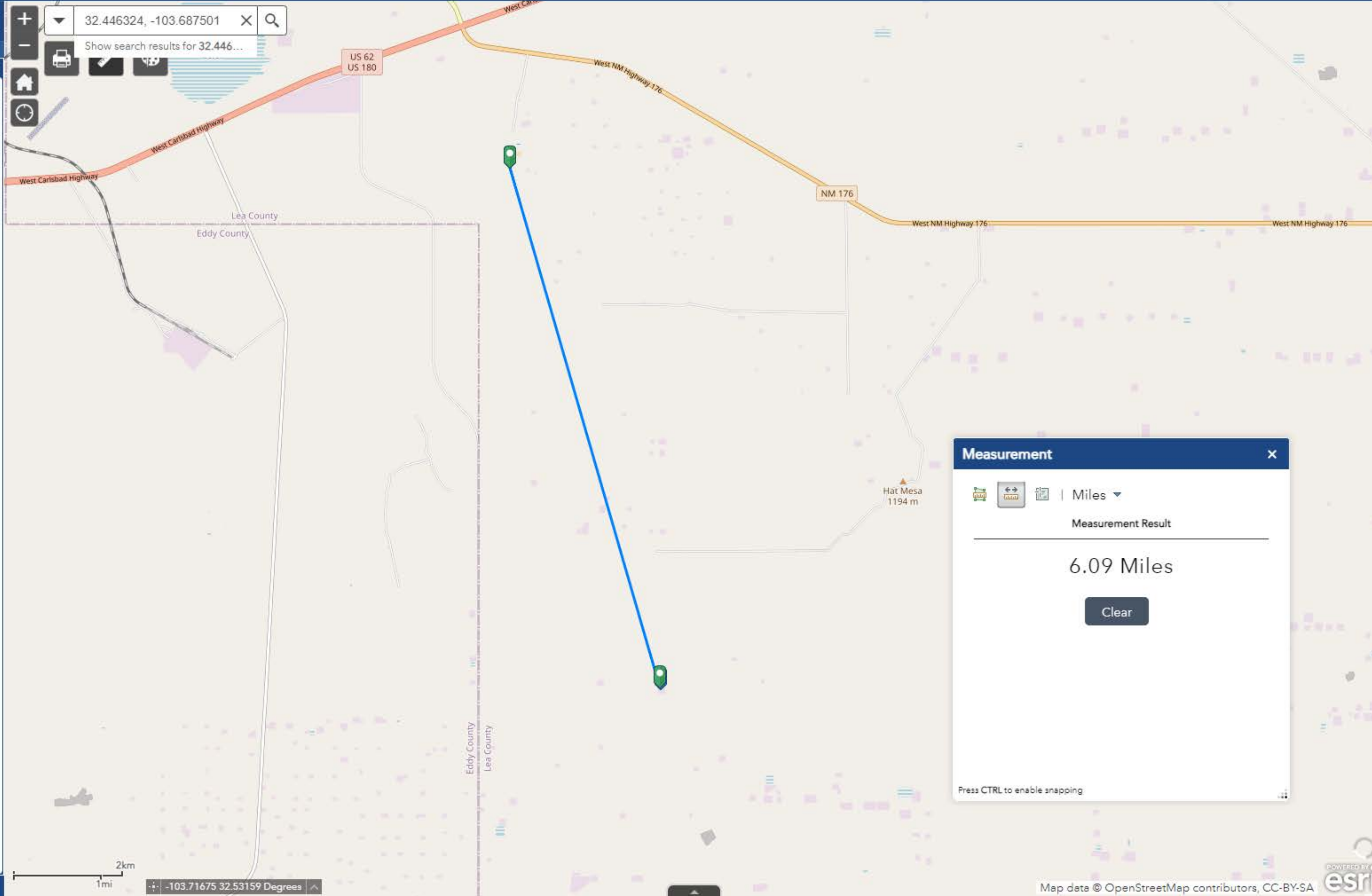
Terrain with Labels

Topographic

USA Topo Maps

USGS National Map

Topographic



Measurement ✕

Miles ▾

Measurement Result

6.09 Miles

Clear

Press CTRL to enable snapping

Layer List

Layers

☒ OSE Water PODs

● Active

● Pending

● Changed Location of Well

● Inactive

● Plugged

● Capped

● Unknown

☐ M2.5+ Earthquakes (USGS 30-day)

☐ NM Oil and Gas Wells

☒ USGS Groundwater wells

☒ USGS Active Monitoring GW Wells

☐ USGS Historical GW Wells

☐ Induced Seismicity Area

☐ Permian Basin Karst Areas

☐ BLM Oil Gas Leases Case Disp

☐ BLM Oil Gas Leases Production Status

☐ BLM Fluid Minerals Case

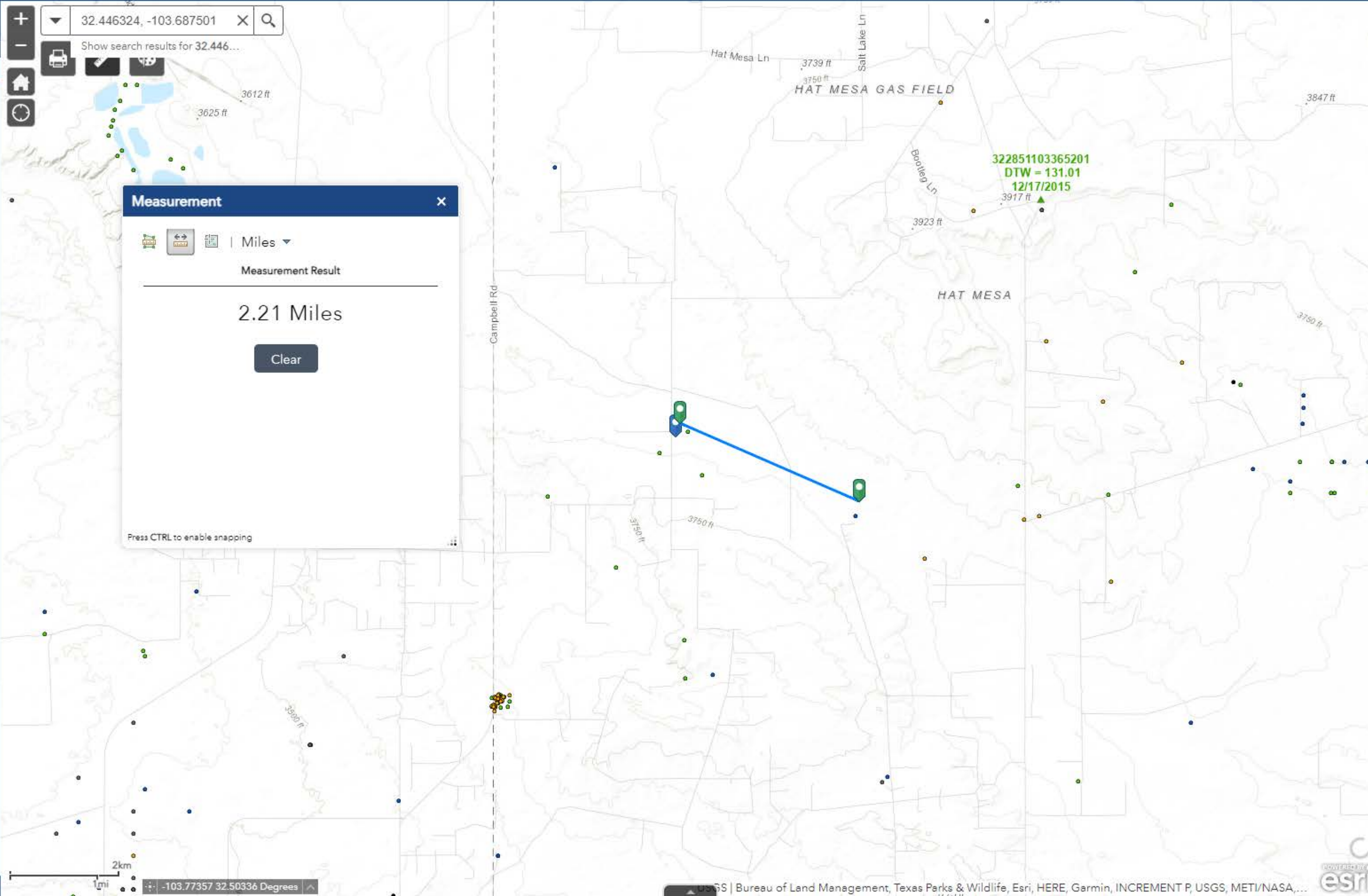
☐ BLM FM Agreements Case Disp

☐ BLM FM Agreements Production Status

☐ BLM FM Participating Areas Case Disp

☐ NM SLO Oil and Gas Leases

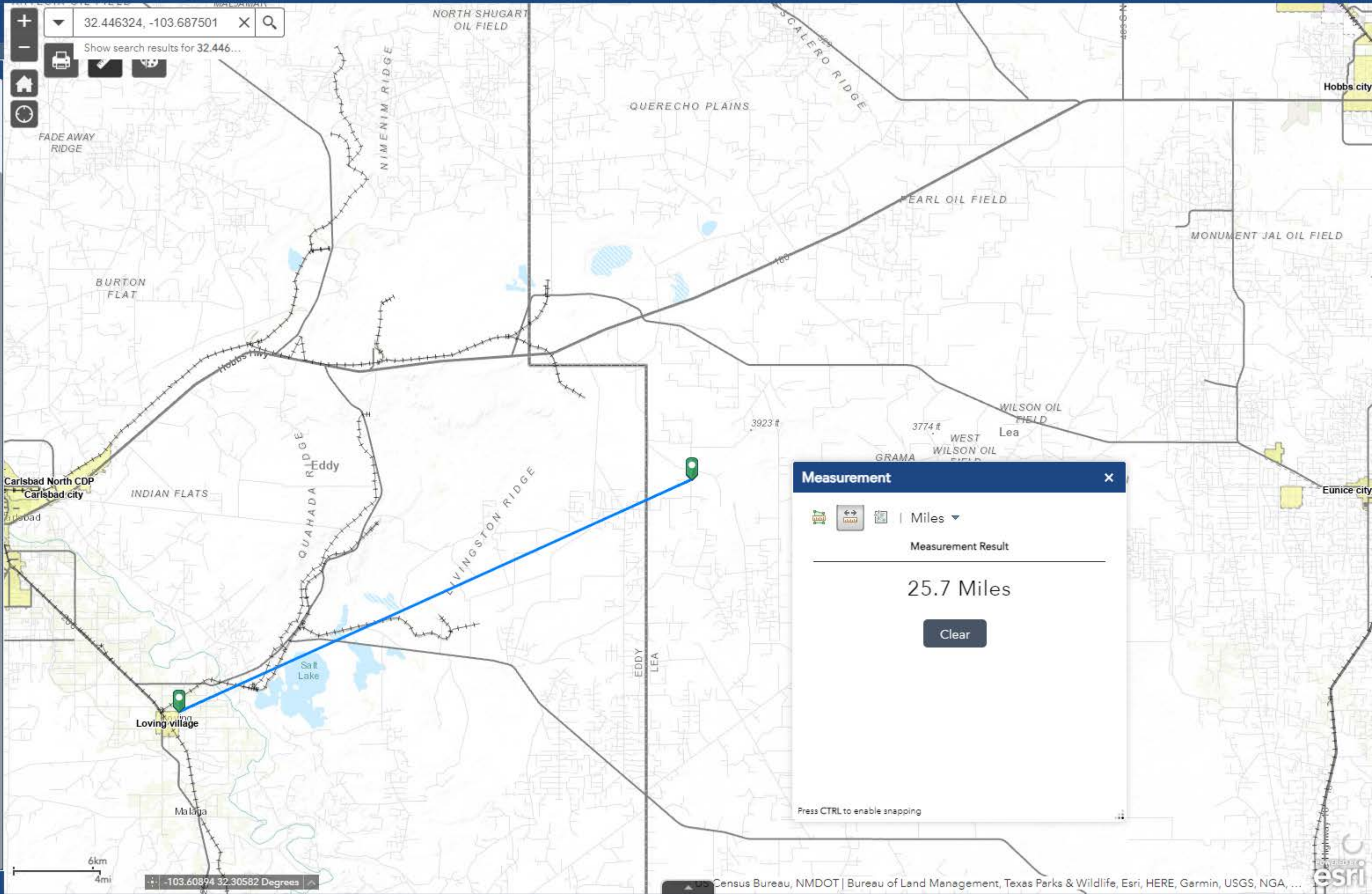
☐ NM SLO Participating Areas and Unit Agreements





Layer List

- ☐ NM Oil and Gas Wells ...
- ☐ USGS Groundwater wells ...
- ☐ Induced Seismicity Area ...
- ☐ Permian Basin Karst Areas ...
- ☐ BLM Oil Gas Leases Case Disp ...
- ☐ BLM Oil Gas Leases Production Status ...
- ☐ BLM Fluid Minerals Case ...
- ☐ BLM FM Agreements Case Disp ...
- ☐ BLM FM Agreements Production Status ...
- ☐ BLM FM Participating Areas Case Disp ...
- ☐ NM SLO Oil and Gas Leases ...
- ☐ NM SLO Participating Area and Unit Agreement Boundaries ...
- ☒ Political Boundaries and Transportation ...
 - ☒ NMDOT Railroads ...
 - ☒ NMDOT GPS ROADS ...
 - ☒ New Mexico Towns ...
 - ☒ New Mexico Counties ...
- ☐ Mineral and Surface Ownership ...
- ☐ Hydrology ...
- ☐ OCD Districts ...
- ☐ NM Oil and Gas Production Areas ...
- ☐ Public Land Survey System (PLSS) ...



Measurement ✕

Miles ▾

Measurement Result

25.7 Miles

Clear

Press CTRL to enable snapping

BASEMAPS >

MAP LAYERS >

☒ Wetlands 1 2

☒ Riparian 1 2

☐ Riparian Mapping Areas 1 2

☒ Data Source 1 2

☐ Source Type

☐ Image Scale

☐ Image Year

☐ Areas of Interest 2

☐ FWS Managed Lands 1 2

☐ Historic Wetland Data 1 2

+

-



Measure



Miles

Measurement Result

1.8 Miles

LEGEND

1:36,112
32.433 | -103.663



Layer List

Layers

☒ Registered Mines

- ☒ Aggregate, Stone etc.
- ☒ Coal
- ☒ Gypsum
- ☒ Humate
- ☒ Industrial Minerals (Other)
- ☒ Metals
- ☒ Perlite
- ☒ Potash
- ☒ PM Pumice
- ☒ Red Dog, Scoria
- ☒ Salt
- ☒ Uranium
- ☒ ZE Zeolites

☐ Mineral_and_Surface_Ownership

☐ Public Land Survey System (PLSS)

+

-

Home

History

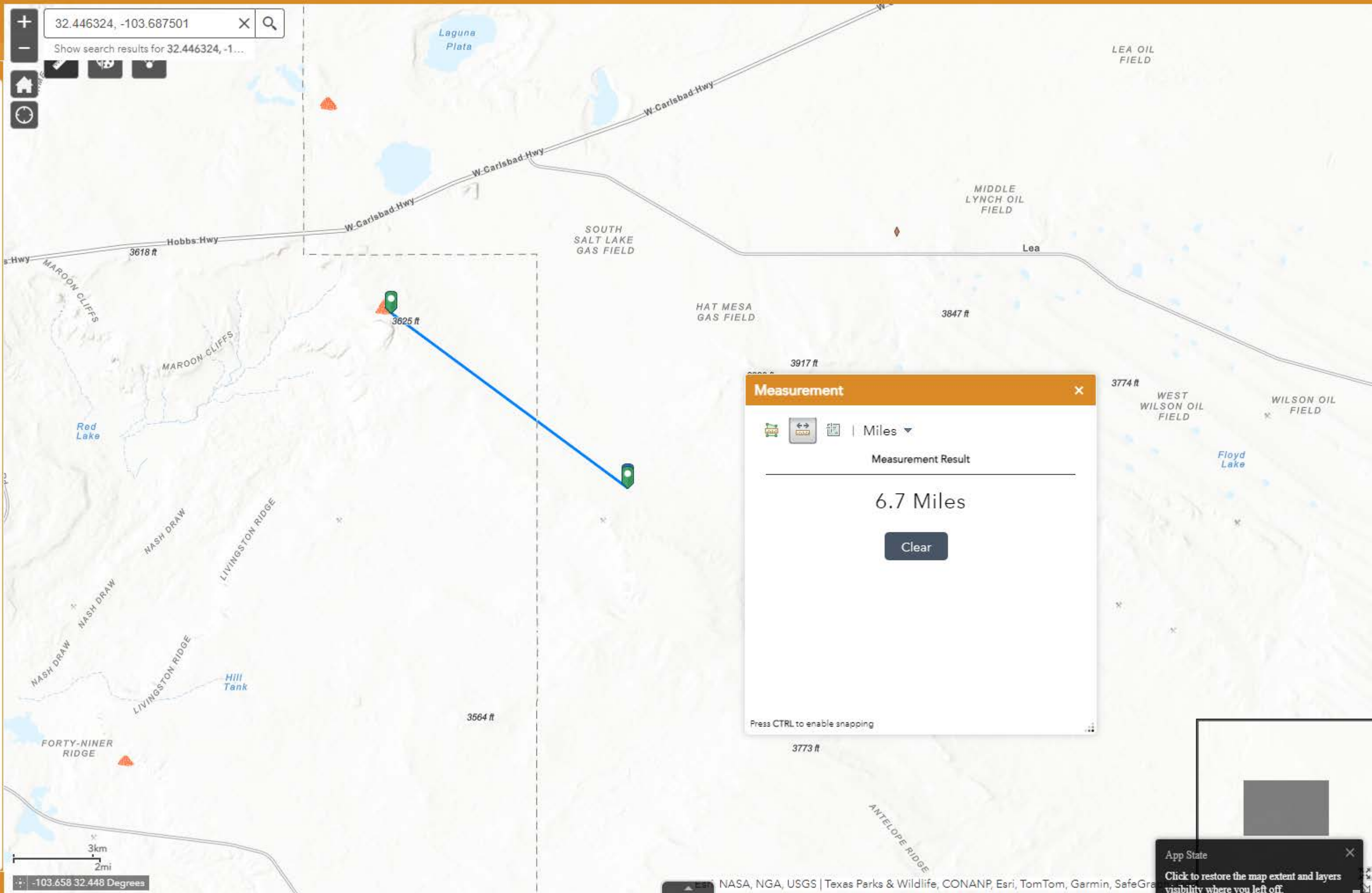
32.446324, -103.687501

Show search results for 32.446324, -1...

✓

✗

📍



Measurement

Miles

Measurement Result

6.7 Miles

Clear

Press CTRL to enable snapping

App State

Click to restore the map extent and layers visibility where you left off.

Layer List

Layers

OSE Water PODs

...

M2.5+ Earthquakes (USGS 30-day)

...

NM Oil and Gas Wells

...

USGS Groundwater wells

...

Induced Seismicity Area

...

Permian Basin Karst Areas

...

Critical Karst Resource Area

...

Karst Occurrence Potential

...

High

Medium

Low

BLM Oil Gas Leases Case Disp

...

BLM Oil Gas Leases Production Status

...

BLM Fluid Minerals Case

...

BLM FM Agreements Case Disp

...

BLM FM Agreements Production Status

...

BLM FM Participating Areas Case Disp

...

NM SLO Oil and Gas Leases

...

NM SLO Participating Area and Unit Agreement Boundaries

...

Political Boundaries and Transportation

...

Mineral and Surface Ownership

...

Hydrology

...

The map displays a region in New Mexico, including the Maroon Cliffs, Nash Draw, and Livingston Ridge. It shows various oil and gas fields such as South Salt Lake Gas Field, Hat Mesa Gas Field, and West Wilson Oil Field. Karst areas are highlighted in shades of blue, indicating different levels of occurrence potential (High, Medium, Low). A measurement tool is active, showing a distance of 4.9 miles between two points. The map also includes a layer list on the left and a search bar at the top.

Released to Imaging: 4/2/2024 10:01:18 AM

All rights reserved

BLM, OCD, New Mexico Tech | Bureau of Land Management, Texas Parks & Wildlife, Esri, HERE, Garmin, USGS, NG...
POWERED BY
esri

+

-

Home

Refresh

32.446324,-103.687501

X

Q

Show search results for 32.446324,-1...

Print

Save

35015C0850D
eff. 6/4/2010

35015C0875D
eff. 6/4/2010

35015C0900D
6/4/2010
Not Printed

35025C1400D
12/16/2008
Not Printed

35025C1425D
12/16/2008
Not Printed

35025C1450D
12/16/2008
Not Printed

35025C1475D
12/16/2008
Not Printed

Measurement

Measure

Measure

Measure

Miles

Measurement Result

10.9 Miles

Clear

Press CTRL to enable snapping

35015C1125D
eff. 6/4/2010

35015C1150D
6/4/2010
Not Printed

35015C1175D
6/4/2010
Not Printed

35025C1575D
12/16/2008
Not Printed

35025C1600D
12/16/2008
Not Printed

35025C1625D
12/16/2008
Not Printed

35015C1350D
eff. 6/4/2010

35015C1375D
eff. 6/4/2010

35015C1400D
6/4/2010
Not Printed

35015C1425D
6/4/2010
Not Printed

35025C1725D
12/16/2008
Not Printed

35025C1750D
12/16/2008
Not Printed

35025C1775D
12/16/2008
Not Printed

**GNM Cheddar Liner Inspection nAPP2336370553****01/09/2024****INCIDENT DESCRIPTION #nAPP2336370553**

On 01/04/2024 Goodnight Midstream Operations discovered a release of 15 bbls of produced water at the Cheddar site from corrosion on a 10" Nozzle on the Horizontal Gun Barrel located on North end of the Containment. A total of 15 bbls of produced water were removed via sump pump and routed back to the storage tanks. None of the produced water made it outside of the liner and only affected an area inside the containment of approximately 1700 sq ft.

NOTIFICATION OF LINER INSPECTION

On 01/04/2024 a Notification of Liner Inspection was submitted to the NMOCD Online Portal that a liner inspection would be completed on 01/09/2024 by Goodnight Midstream HSE Rep Adrian Urquidi.

LINER INSPECTION SUMMARY

A crew was dispatched on 01/02/2024 to pressure wash and steam the liner free of all contaminants in preparation of a liner inspection. Wastewater that was generated from the cleaning was routed into the tanks via sump pump located inside containment.

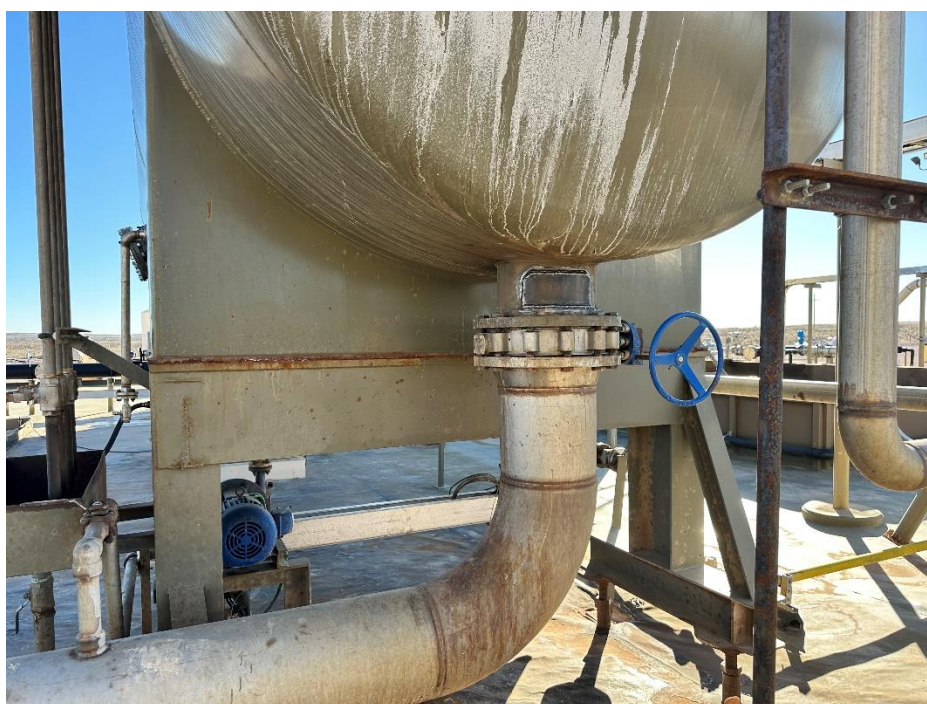
On 01/09/2024 at 9:30 am an inspection of the liner was completed by Goodnight Midstream HSE Rep Adrian Urquidi. Below are the pictures of the liner inspection that was completed demonstrating that the integrity of the liner was not compromised. The liner seams were inspected by walking the interior perimeter of the secondary containment. Followed by walking the seams where each liner roll was seamed together to verify that there was no delamination of the liner or other defects in the liner.





GNM Cheddar Liner Inspection nAPP2336370553

01/09/2024





GNM Cheddar Liner Inspection nAPP2336370553

01/09/2024





GNM Cheddar Liner Inspection nAPP2336370553

01/09/2024





GNM Cheddar Liner Inspection nAPP2336370553

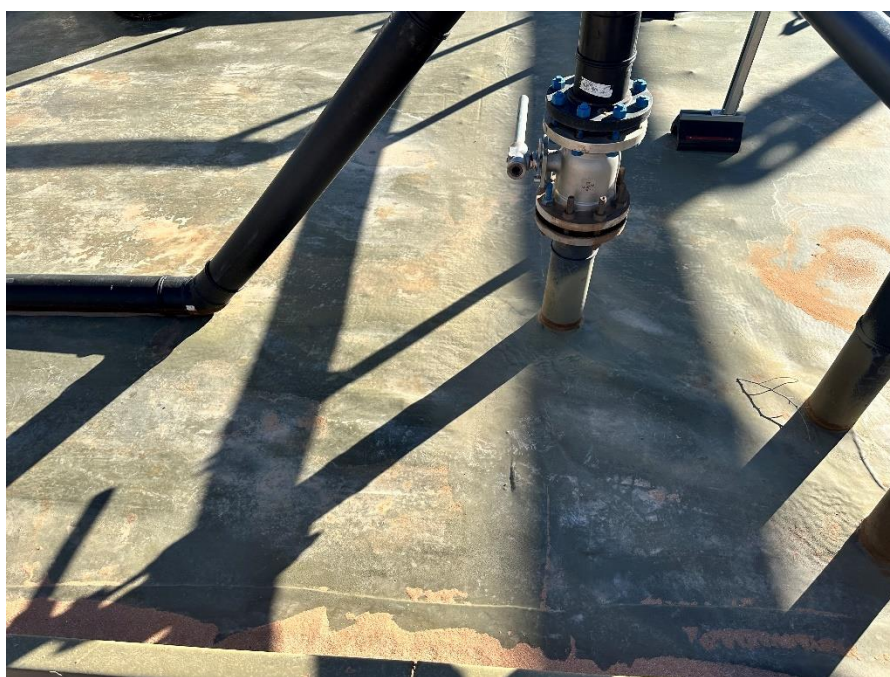
01/09/2024





GNM Cheddar Liner Inspection nAPP2336370553

01/09/2024





GNM Cheddar Liner Inspection nAPP2336370553

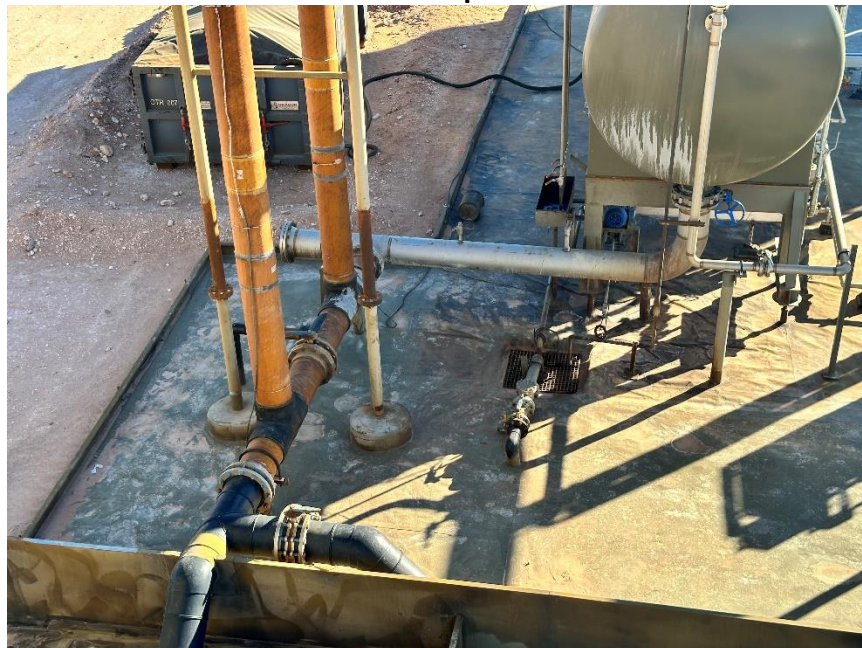
01/09/2024





GNM Cheddar Liner Inspection nAPP2336370553

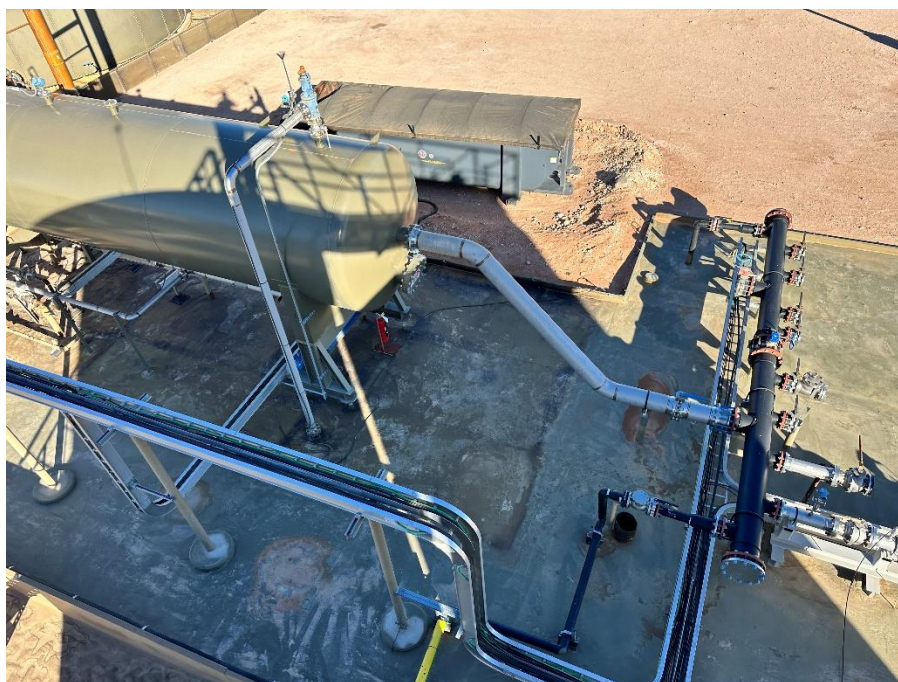
01/09/2024





GNM Cheddar Liner Inspection nAPP2336370553

01/09/2024





GNM Cheddar Liner Inspection nAPP2336370553

01/09/2024



At this time Goodnight Midstream is requesting closure of this incident. Should you have any questions please feel free to contact Permian HSE Representative Adrian Urquidi at (432)530-9517 or email at aurquidi@goodnightmidstream.com.

Sincerely,

A handwritten signature in blue ink that reads "Adrian Urquidi".

Adrian Urquidi
EHS Representative
Goodnight Midstream
O: 432.242.6626 C: 432.530.9517
Email: adrian.urquidi@goodnightmidstream.com
11612 Tower Rd
Midland, TX 79707



District I
1625 N. French Dr., Hobbs, NM 88240
Phone:(575) 393-6161 Fax:(575) 393-0720
District II
811 S. First St., Artesia, NM 88210
Phone:(575) 748-1283 Fax:(575) 748-9720
District III
1000 Rio Brazos Rd., Aztec, NM 87410
Phone:(505) 334-6178 Fax:(505) 334-6170
District IV
1220 S. St Francis Dr., Santa Fe, NM 87505
Phone:(505) 476-3470 Fax:(505) 476-3462

State of New Mexico
Energy, Minerals and Natural Resources
Oil Conservation Division
1220 S. St Francis Dr.
Santa Fe, NM 87505

QUESTIONS

Action 309445

QUESTIONS

Operator: GOODNIGHT MIDSTREAM PERMIAN, LLC 5910 North Central Expressway Dallas, TX 75206	OGRID:	372311
	Action Number:	309445
	Action Type:	[C-141] Remediation Closure Request C-141 (C-141-v-Closure)

QUESTIONS

Prerequisites	
Incident ID (n#)	nAPP2336370553
Incident Name	NAPP2336370553 CHEDDAR HGB NOZZLE RELEASE @ 0
Incident Type	Produced Water Release
Incident Status	Remediation Closure Report Received

Location of Release Source	
Please answer all the questions in this group.	
Site Name	CHEDDAR HGB NOZZLE RELEASE
Date Release Discovered	12/29/2023
Surface Owner	Federal

Incident Details	
Please answer all the questions in this group.	
Incident Type	Produced Water Release
Did this release result in a fire or is the result of a fire	No
Did this release result in any injuries	No
Has this release reached or does it have a reasonable probability of reaching a watercourse	No
Has this release endangered or does it have a reasonable probability of endangering public health	No
Has this release substantially damaged or will it substantially damage property or the environment	No
Is this release of a volume that is or may with reasonable probability be detrimental to fresh water	No

Nature and Volume of Release	
Material(s) released, please answer all that apply below. Any calculations or specific justifications for the volumes provided should be attached to the follow-up C-141 submission.	
Crude Oil Released (bbls) Details	Not answered.
Produced Water Released (bbls) Details	Cause: Corrosion Tank (Any) Produced Water Released: 15 BBL Recovered: 15 BBL Lost: 0 BBL.
Is the concentration of chloride in the produced water >10,000 mg/l	Yes
Condensate Released (bbls) Details	Not answered.
Natural Gas Vented (Mcf) Details	Not answered.
Natural Gas Flared (Mcf) Details	Not answered.
Other Released Details	Not answered.
Are there additional details for the questions above (i.e. any answer containing Other, Specify, Unknown, and/or Fire, or any negative lost amounts)	Not answered.

District I

1625 N. French Dr., Hobbs, NM 88240
Phone:(575) 393-6161 Fax:(575) 393-0720

District II

811 S. First St., Artesia, NM 88210
Phone:(575) 748-1283 Fax:(575) 748-9720

District III

1000 Rio Brazos Rd., Aztec, NM 87410
Phone:(505) 334-6178 Fax:(505) 334-6170

District IV

1220 S. St Francis Dr., Santa Fe, NM 87505
Phone:(505) 476-3470 Fax:(505) 476-3462

State of New Mexico
Energy, Minerals and Natural Resources
Oil Conservation Division
1220 S. St Francis Dr.
Santa Fe, NM 87505

QUESTIONS, Page 2

Action 309445

QUESTIONS (continued)

Operator: GOODNIGHT MIDSTREAM PERMIAN, LLC 5910 North Central Expressway Dallas, TX 75206	OGRID:	372311
	Action Number:	309445
	Action Type:	[C-141] Remediation Closure Request C-141 (C-141-v-Closure)

QUESTIONS

Nature and Volume of Release (continued)	
Is this a gas only submission (i.e. only significant Mcf values reported)	No, according to supplied volumes this does not appear to be a "gas only" report.
Was this a major release as defined by Subsection A of 19.15.29.7 NMAC	No
Reasons why this would be considered a submission for a notification of a major release	<i>Unavailable.</i>
<i>With the implementation of the 19.15.27 NMAC (05/25/2021), venting and/or flaring of natural gas (i.e. gas only) are to be submitted on the C-129 form.</i>	

Initial Response

The responsible party must undertake the following actions immediately unless they could create a safety hazard that would result in injury.

The source of the release has been stopped	True
The impacted area has been secured to protect human health and the environment	True
Released materials have been contained via the use of berms or dikes, absorbent pads, or other containment devices	True
All free liquids and recoverable materials have been removed and managed appropriately	True
If all the actions described above have not been undertaken, explain why	<i>Not answered.</i>

Per Paragraph (4) of Subsection B of 19.15.29.8 NMAC the responsible party may commence remediation immediately after discovery of a release. If remediation has begun, please prepare and attach a narrative of actions to date in the follow-up C-141 submission. If remedial efforts have been successfully completed or if the release occurred within a lined containment area (see Subparagraph (a) of Paragraph (5) of Subsection A of 19.15.29.11 NMAC), please prepare and attach all information needed for closure evaluation in the follow-up C-141 submission.

I hereby certify that the information given above is true and complete to the best of my knowledge and understand that pursuant to OCD rules and regulations all operators are required to report and/or file certain release notifications and perform corrective actions for releases which may endanger public health or the environment. The acceptance of a C-141 report by the OCD does not relieve the operator of liability should their operations have failed to adequately investigate and remediate contamination that pose a threat to groundwater, surface water, human health or the environment. In addition, OCD acceptance of a C-141 report does not relieve the operator of responsibility for compliance with any other federal, state, or local laws and/or regulations.

I hereby agree and sign off to the above statement	Name: Adrian Urduidi Title: HSE Representative Email: adrian.urduidi@goodnightmidstream.com Date: 01/10/2024
--	--

District I

1625 N. French Dr., Hobbs, NM 88240
Phone:(575) 393-6161 Fax:(575) 393-0720

District II

811 S. First St., Artesia, NM 88210
Phone:(575) 748-1283 Fax:(575) 748-9720

District III

1000 Rio Brazos Rd., Aztec, NM 87410
Phone:(505) 334-6178 Fax:(505) 334-6170

District IV

1220 S. St Francis Dr., Santa Fe, NM 87505
Phone:(505) 476-3470 Fax:(505) 476-3462

State of New Mexico
Energy, Minerals and Natural Resources
Oil Conservation Division
1220 S. St Francis Dr.
Santa Fe, NM 87505

QUESTIONS, Page 3

Action 309445

QUESTIONS (continued)

Operator: GOODNIGHT MIDSTREAM PERMIAN, LLC 5910 North Central Expressway Dallas, TX 75206	OGRID:	372311
	Action Number:	309445
	Action Type:	[C-141] Remediation Closure Request C-141 (C-141-v-Closure)

QUESTIONS**Site Characterization**

Please answer all the questions in this group (only required when seeking remediation plan approval and beyond). This information must be provided to the appropriate district office no later than 90 days after the release discovery date.

What is the shallowest depth to groundwater beneath the area affected by the release in feet below ground surface (ft bgs)	Between 100 and 500 (ft.)
What method was used to determine the depth to ground water	Attached Document
Did this release impact groundwater or surface water	No
What is the minimum distance, between the closest lateral extents of the release and the following surface areas:	
A continuously flowing watercourse or any other significant watercourse	Between 1 and 5 (mi.)
Any lakebed, sinkhole, or playa lake (measured from the ordinary high-water mark)	Between 1 and 5 (mi.)
An occupied permanent residence, school, hospital, institution, or church	Greater than 5 (mi.)
A spring or a private domestic fresh water well used by less than five households for domestic or stock watering purposes	Between 1 and 5 (mi.)
Any other fresh water well or spring	Between 1 and 100 (ft.)
Incorporated municipal boundaries or a defined municipal fresh water well field	Greater than 5 (mi.)
A wetland	Between 1 and 5 (mi.)
A subsurface mine	Greater than 5 (mi.)
An (non-karst) unstable area	Between 1 and 5 (mi.)
Categorize the risk of this well / site being in a karst geology	Low
A 100-year floodplain	Greater than 5 (mi.)
Did the release impact areas not on an exploration, development, production, or storage site	No

Remediation Plan

Please answer all the questions that apply or are indicated. This information must be provided to the appropriate district office no later than 90 days after the release discovery date.

Requesting a remediation plan approval with this submission	Yes
Attach a comprehensive report demonstrating the lateral and vertical extents of soil contamination associated with the release have been determined, pursuant to 19.15.29.11 NMAC and 19.15.29.13 NMAC.	
Have the lateral and vertical extents of contamination been fully delineated	Yes
Was this release entirely contained within a lined containment area	Yes
Per Subsection B of 19.15.29.11 NMAC unless the site characterization report includes completed efforts at remediation, the report must include a proposed remediation plan in accordance with 19.15.29.12 NMAC, which includes the anticipated timelines for beginning and completing the remediation.	
On what estimated date will the remediation commence	01/06/2024
On what date will (or did) the final sampling or liner inspection occur	01/11/2024
On what date will (or was) the remediation complete(d)	01/07/2024
What is the estimated surface area (in square feet) that will be remediated	0
What is the estimated volume (in cubic yards) that will be remediated	0
These estimated dates and measurements are recognized to be the best guess or calculation at the time of submission and may (be) change(d) over time as more remediation efforts are completed.	
The OCD recognizes that proposed remediation measures may have to be minimally adjusted in accordance with the physical realities encountered during remediation. If the responsible party has any need to significantly deviate from the remediation plan proposed, then it should consult with the division to determine if another remediation plan submission is required.	

District I

1625 N. French Dr., Hobbs, NM 88240
Phone:(575) 393-6161 Fax:(575) 393-0720

District II

811 S. First St., Artesia, NM 88210
Phone:(575) 748-1283 Fax:(575) 748-9720

District III

1000 Rio Brazos Rd., Aztec, NM 87410
Phone:(505) 334-6178 Fax:(505) 334-6170

District IV

1220 S. St Francis Dr., Santa Fe, NM 87505
Phone:(505) 476-3470 Fax:(505) 476-3462

State of New Mexico
Energy, Minerals and Natural Resources
Oil Conservation Division
1220 S. St Francis Dr.
Santa Fe, NM 87505

QUESTIONS, Page 4

Action 309445

QUESTIONS (continued)

Operator: GOODNIGHT MIDSTREAM PERMIAN, LLC 5910 North Central Expressway Dallas, TX 75206	OGRID:
	372311
	Action Number:
	309445
	Action Type:
	[C-141] Remediation Closure Request C-141 (C-141-v-Closure)

QUESTIONS**Remediation Plan (continued)**

Please answer all the questions that apply or are indicated. This information must be provided to the appropriate district office no later than 90 days after the release discovery date.

This remediation will (or is expected to) utilize the following processes to remediate / reduce contaminants:

(Select all answers below that apply.)

Is (or was) there affected material present needing to be removed	Yes
Is (or was) there a power wash of the lined containment area (to be) performed	Yes
OTHER (Non-listed remedial process)	No

Per Subsection B of 19.15.29.11 NMAC unless the site characterization report includes completed efforts at remediation, the report must include a proposed remediation plan in accordance with 19.15.29.12 NMAC, which includes the anticipated timelines for beginning and completing the remediation.

I hereby certify that the information given above is true and complete to the best of my knowledge and understand that pursuant to OCD rules and regulations all operators are required to report and/or file certain release notifications and perform corrective actions for releases which may endanger public health or the environment. The acceptance of a C-141 report by the OCD does not relieve the operator of liability should their operations have failed to adequately investigate and remediate contamination that pose a threat to groundwater, surface water, human health or the environment. In addition, OCD acceptance of a C-141 report does not relieve the operator of responsibility for compliance with any other federal, state, or local laws and/or regulations.

I hereby agree and sign off to the above statement	Name: Adrian Urduidi Title: HSE Representative Email: adrian.urquidi@goodnightmidstream.com Date: 01/30/2024
--	--

The OCD recognizes that proposed remediation measures may have to be minimally adjusted in accordance with the physical realities encountered during remediation. If the responsible party has any need to significantly deviate from the remediation plan proposed, then it should consult with the division to determine if another remediation plan submission is required.

District I

1625 N. French Dr., Hobbs, NM 88240
Phone:(575) 393-6161 Fax:(575) 393-0720

District II

811 S. First St., Artesia, NM 88210
Phone:(575) 748-1283 Fax:(575) 748-9720

District III

1000 Rio Brazos Rd., Aztec, NM 87410
Phone:(505) 334-6178 Fax:(505) 334-6170

District IV

1220 S. St Francis Dr., Santa Fe, NM 87505
Phone:(505) 476-3470 Fax:(505) 476-3462

State of New Mexico
Energy, Minerals and Natural Resources
Oil Conservation Division
1220 S. St Francis Dr.
Santa Fe, NM 87505

QUESTIONS, Page 6

Action 309445

QUESTIONS (continued)

Operator: GOODNIGHT MIDSTREAM PERMIAN, LLC 5910 North Central Expressway Dallas, TX 75206	OGRID:	372311
	Action Number:	309445
	Action Type:	[C-141] Remediation Closure Request C-141 (C-141-v-Closure)

QUESTIONS

Liner Inspection Information	
Last liner inspection notification (C-141L) recorded	299884
Liner inspection date pursuant to Subparagraph (a) of Paragraph (5) of Subsection A of 19.15.29.11 NMAC	01/09/2023
Was all the impacted materials removed from the liner	Yes
What was the liner inspection surface area in square feet	1620

Remediation Closure Request

Only answer the questions in this group if seeking remediation closure for this release because all remediation steps have been completed.

Requesting a remediation closure approval with this submission	Yes
Have the lateral and vertical extents of contamination been fully delineated	Yes
Was this release entirely contained within a lined containment area	Yes
What was the total surface area (in square feet) remediated	1620
What was the total volume (cubic yards) remediated	0
Summarize any additional remediation activities not included by answers (above)	All contaminants that were released were contained inside the containment. Soil was never impacted by the release and the liner inspection demonstrates that the integrity of the liner was not compromised.

The responsible party must attach information demonstrating they have complied with all applicable closure requirements and any conditions or directives of the OCD. This demonstration should be in the form of a comprehensive report (in .pdf format) including a scaled site map, sampling diagrams, relevant field notes, photographs of any excavation prior to backfilling, laboratory data including chain of custody documents of final sampling, and a narrative of the remedial activities. Refer to 19.15.29.12 NMAC.

I hereby certify that the information given above is true and complete to the best of my knowledge and understand that pursuant to OCD rules and regulations all operators are required to report and/or file certain release notifications and perform corrective actions for releases which may endanger public health or the environment. The acceptance of a C-141 report by the OCD does not relieve the operator of liability should their operations have failed to adequately investigate and remediate contamination that pose a threat to groundwater, surface water, human health or the environment. In addition, OCD acceptance of a C-141 report does not relieve the operator of responsibility for compliance with any other federal, state, or local laws and/or regulations. The responsible party acknowledges they must substantially restore, reclaim, and re-vegetate the impacted surface area to the conditions that existed prior to the release or their final land use in accordance with 19.15.29.13 NMAC including notification to the OCD when reclamation and re-vegetation are complete.

I hereby agree and sign off to the above statement	Name: Adrian Urduidi Title: HSE Representative Email: adrian.urduidi@goodnightmidstream.com Date: 01/30/2024
--	--

District I
1625 N. French Dr., Hobbs, NM 88240
Phone:(575) 393-6161 Fax:(575) 393-0720
District II
811 S. First St., Artesia, NM 88210
Phone:(575) 748-1283 Fax:(575) 748-9720
District III
1000 Rio Brazos Rd., Aztec, NM 87410
Phone:(505) 334-6178 Fax:(505) 334-6170
District IV
1220 S. St Francis Dr., Santa Fe, NM 87505
Phone:(505) 476-3470 Fax:(505) 476-3462

State of New Mexico
Energy, Minerals and Natural Resources
Oil Conservation Division
1220 S. St Francis Dr.
Santa Fe, NM 87505

CONDITIONS

Action 309445

CONDITIONS

Operator: GOODNIGHT MIDSTREAM PERMIAN, LLC 5910 North Central Expressway Dallas, TX 75206	OGRID: 372311
	Action Number: 309445
	Action Type: [C-141] Remediation Closure Request C-141 (C-141-v-Closure)

CONDITIONS

Created By	Condition	Condition Date
scott.rodgers	App ID 309445 Liner Inspection approved.	4/2/2024