

Bell Lake 19 CTB 3

4/5/2024

OCD notification # nAPP2409945367

Spills In Lined Containment	
Measurements Of Standing Fluid	
Length(Ft)	50
Width(Ft)	20
Depth(in.)	0.5
Total Capacity without tank displacements (bbls)	7.42
No. of 500 bbl Tanks In Standing Fluid	1
No. of Other Tanks In Standing Fluid	0
OD Of Other Tanks In Standing Fluid(feet)	0
Total Volume of standing fluid accounting for tank displacement.	6.02



**Pima Environmental Services  
5614 N. Lovington Highway  
Hobbs, NM 88240  
575-964-7740**

April 30, 2024

NMOCD District 2  
811 S. First St  
Artesia, NM, 88210

**RE: Liner Inspection and Closure Report  
Bell Lake 19 CTB 3  
API No. N/A  
GPS : Latitude 32.19711 Longitude -103.60613  
UL- P, Section 19, Township 24S, Range 33E  
Lea County, NM  
NMOCD Reference No. NAPP2409945367**

Devon Energy Production Company (Devon) has contracted Pima Environmental Services, LLC (Pima) to perform a liner inspection and prepare this closure report for a produced water release that happened at the Bell Lake 19 CTB 3 (Bell Lake). This incident was assigned Incident ID: NAPP2409945367, by the New Mexico Oil Conservation Division (NMOCD).

#### **Site Information and Site Characterization**

The Bell Lake is located approximately twenty-five (25) miles northeast of Jal, NM. This spill site is in Unit P, Section 19, Township 24S, Range 33E, Latitude 32.19711 Longitude-103.60613, Lea County, NM. A Location Map can be found in Figure 1.

Based upon New Mexico Office of the State Engineer well water data, depth to the nearest groundwater in this area is 415 feet below grade surface (BGS). According to the United States Geological Survey well water data, depth to the nearest groundwater in this area is 290 feet BGS. See Appendix A for referenced water surveys. The Bell Lake is in a low karst area (Figure 3). A Topographic Map can be found in Figure 2.

#### **Release Information**

**NAPP2409945367:** On April 5, 2024, there was a leak on a pump seal causing spill into a lined containment. Approximately 6 barrels (bbls) of produced water were released from the pump, into the lined containment. A vacuum truck was called and was able to recover 6 bbls of standing fluid. The liner was visually inspected by Devon field staff for any pinholes or punctures; none were found. Based on this inspection there is no evidence that the spilled fluids left containment.

A Site Map can be found in Figure 4.

#### **Site Assessment and Liner Inspection**

On April 26, 2024, after submitting the 48-hour notification application ID:337324 to the OCD, Pima Environmental conducted a liner inspection at this location. Pima concluded that this liner and containment maintained its integrity and was able to retain the fluids. The liner inspection form and photographic documentation can be found in Appendix C.

#### **Closure Request**

After careful review, Pima requests that this incident ID: NAPP2409945367, be closed. Devon has complied with the applicable closure requirements.

Should you have any questions or need additional information, please feel free to contact Gio Gomez at 575-964-7740 or [Gio@pimaoil.com](mailto:Gio@pimaoil.com).

Respectfully,



Gio Gomez

Project Manager

Pima Environmental Services, LLC

**Attachments**

Figures:

- 1- Location Map
- 2- Topographic Map
- 3- Karst Map
- 4- Site Map

Appendices:

- Appendix A- Referenced Water Surveys
- Appendix B- 48 Hour Notification
- Appendix C- Liner Inspection Form & Photographic Documentation



Pima Environmental Services

**Figures:**

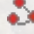

- 1-Location Map
- 2- Topographic Map
- 3- Karst Map
- 4- Site Map

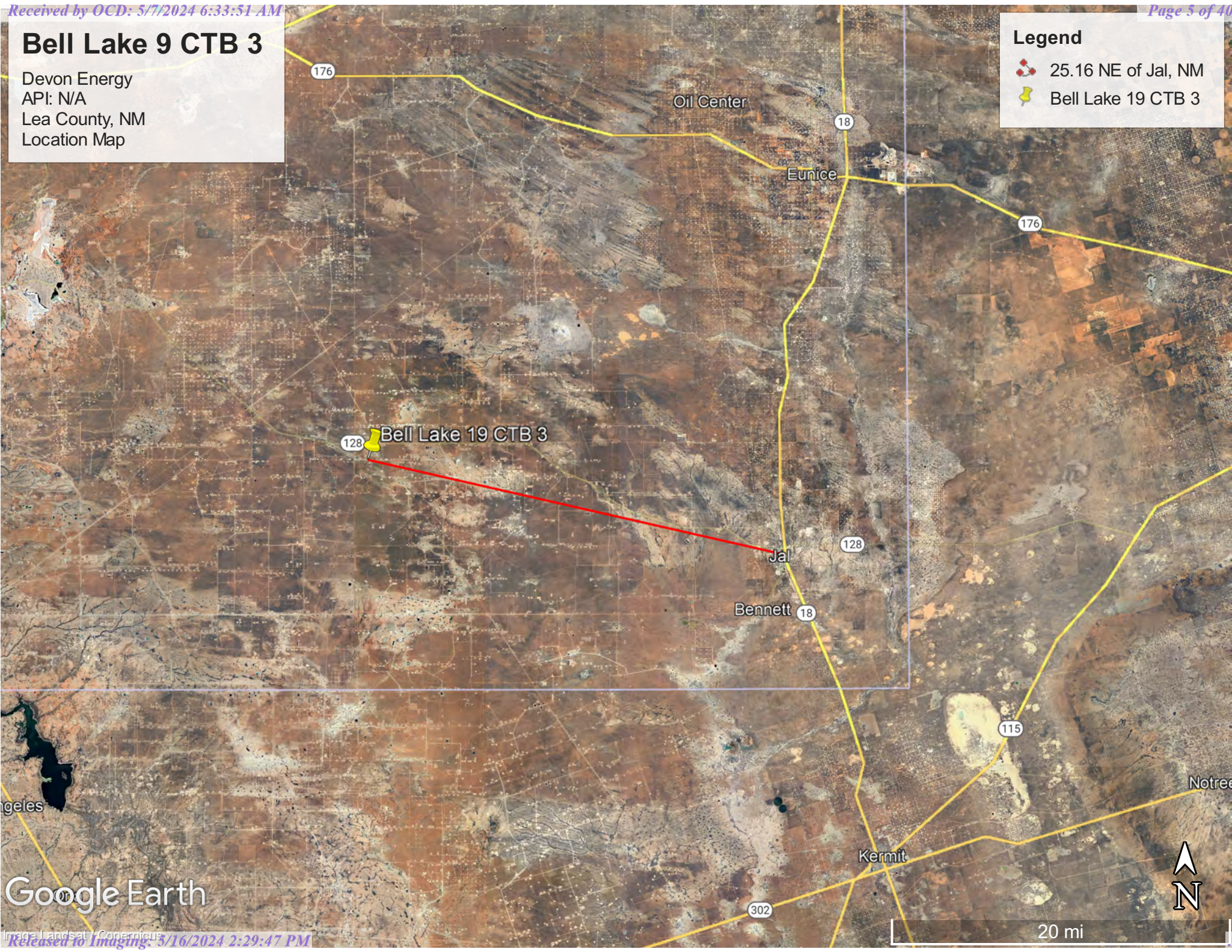


# Bell Lake 9 CTB 3

Devon Energy  
API: N/A  
Lea County, NM  
Location Map

## Legend

-  25.16 NE of Jal, NM
-  Bell Lake 19 CTB 3




Google Earth

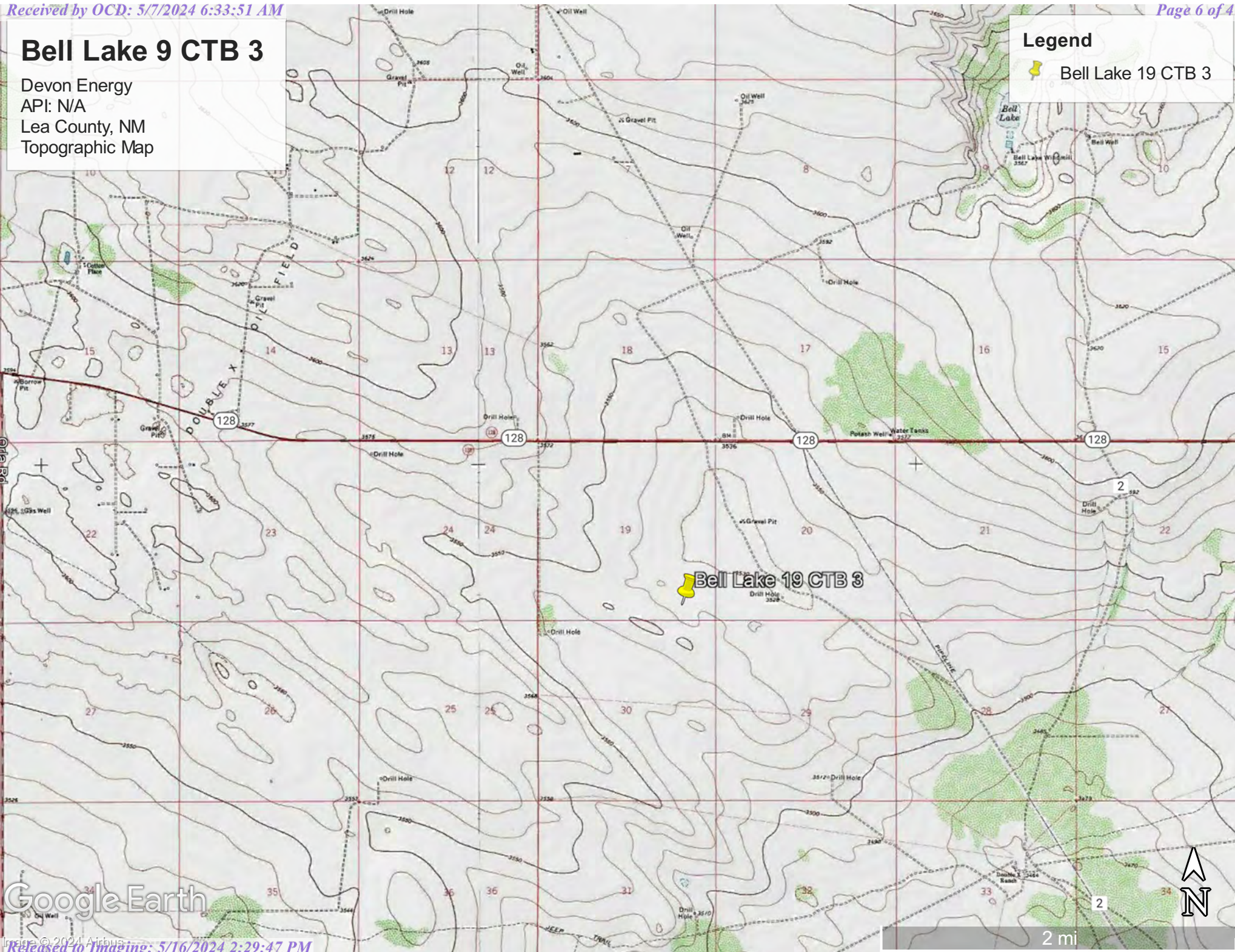


# Bell Lake 9 CTB 3

Devon Energy  
API: N/A  
Lea County, NM  
Topographic Map

## Legend

 Bell Lake 19 CTB 3







Google Earth

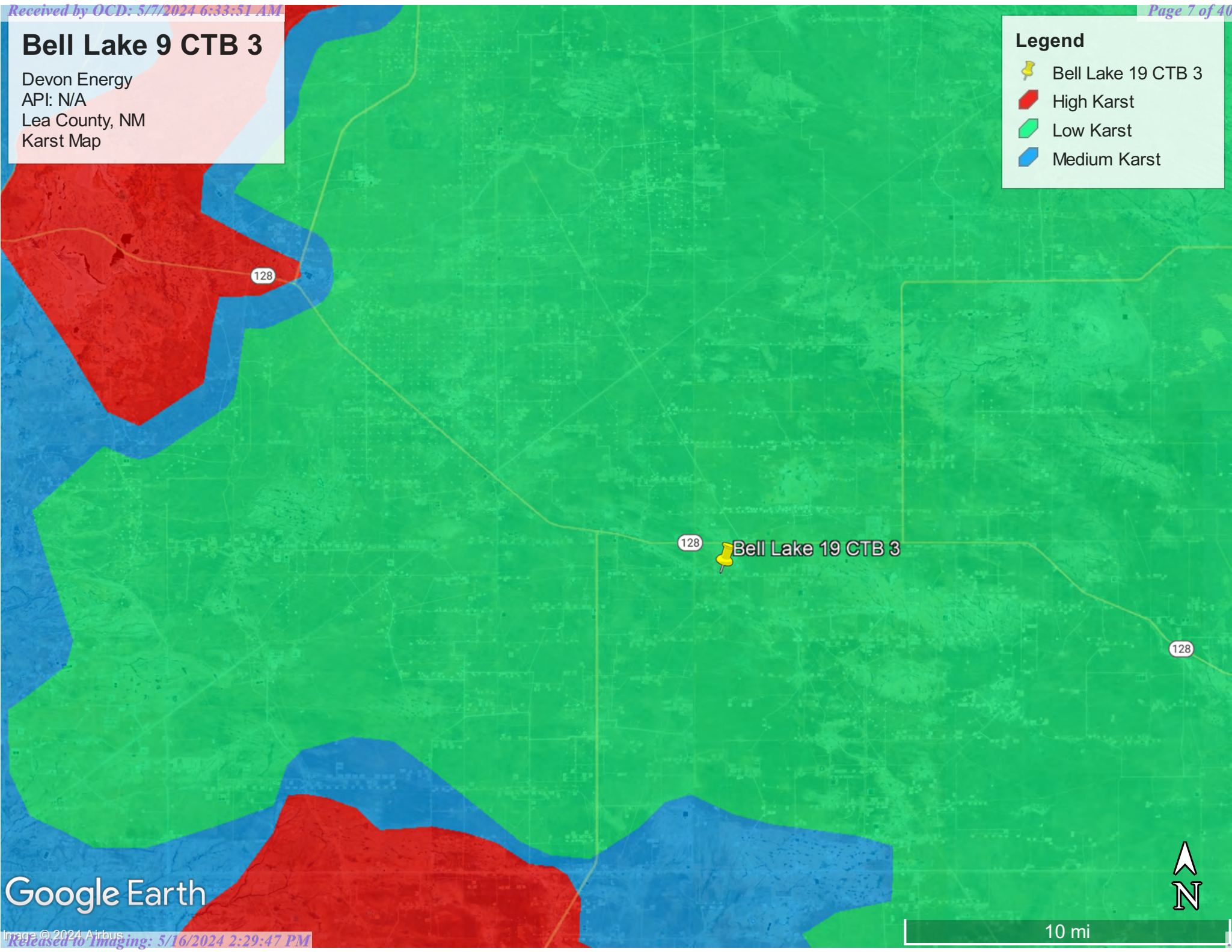


# Bell Lake 9 CTB 3

Devon Energy  
API: N/A  
Lea County, NM  
Karst Map

## Legend

-  Bell Lake 19 CTB 3
-  High Karst
-  Low Karst
-  Medium Karst



Google Earth





10 mi




# Bell Lake 19 CTB 3

Devon Energy  
API: N/A  
Lea County, NM  
Site Map

## Legend

-  Bell Lake 19 CTB 3
-  6,756 Sq ft

Bell Lake 19 CTB 3 



200 ft

Google Earth





Pima Environmental Services

**Appendix A**

Water Surveys:

OSE

USGS

Surface Water Map

Wetlands Map

FEMA

SOIL



# New Mexico Office of the State Engineer

## Water Column/Average Depth to Water

(A CLW##### in the  
POD suffix indicates the  
POD has been replaced  
& no longer serves a  
water right file.)

(R=POD has been  
replaced,  
O=orphaned,  
C=the file is  
closed)

(quarters are 1=NW 2=NE 3=SW 4=SE)

(quarters are smallest to largest) (NAD83 UTM in meters)

(In feet)

POD Number	Code	POD Sub- basin	County	Q 64	Q 16	Q 4	Sec	Tws	Rng	X	Y	Distance	Depth	Well	Depth	Water	Column
<a href="#">C 04768 POD1</a>		CUB	LE	3	3	4	19	24S	33E	631048	3563110	335		55			
<a href="#">C 04622 POD1</a>		CUB	LE	3	3	4	24	24S	32E	629436	3563006	1950					
<a href="#">C 02890</a>		C	LE		2	4	29	24S	33E	633114	3562012*	2063		500			
<a href="#">C 02431</a>		CUB	LE	4	4	4	17	24S	33E	633175	3564728*	2397		525		415	110
<a href="#">C 02432</a>		CUB	LE	4	4	4	17	24S	33E	633175	3564728*	2397		640		415	225
<a href="#">C 02430</a>		CUB	LE	3	3	3	16	24S	33E	633377	3564732*	2554		643		415	228
<a href="#">C 04708 POD1</a>		CUB	LE	1	3	4	21	24S	33E	634149	3563262	2769		100			
<a href="#">C 02312</a>		CUB	LE	1	2	1	05	25S	33E	632292	3559772	3483		150		90	60
<a href="#">C 03565 POD3</a>		CUB	LE		3	4	08	24S	33E	632763	3566546	3680				1533	
<a href="#">C 02311</a>		CUB	LE	2	3	2	33	24S	33E	634391	3560877	3761		120		70	50
<a href="#">C 02310</a>		CUB	LE	2	4	2	33	24S	33E	634420	3560893	3774		120		70	50
<a href="#">C 02563</a>		CUB	LE	1	4	2	33	24S	33E	634639	3560923*	3936		120			
<a href="#">C 02564</a>		CUB	LE	2	4	2	33	24S	33E	634839	3560923*	4103		120			
<a href="#">C 01932</a>		C	ED		3	1	12	24S	32E	628633	3567188*	4897		492			

Average Depth to Water: **429 feet**

Minimum Depth: **70 feet**

Maximum Depth: **1533 feet**

Record Count: 14



**UTMNAD83 Radius Search (in meters):**

**Easting (X):** 631382.54      **Northing (Y):** 3563135.23      **Radius:** 5000

**\*UTM location was derived from PLSS - see Help**

The data is furnished by the NMOSE/ISC and is accepted by the recipient with the expressed understanding that the OSE/ISC make no warranties, expressed or implied, concerning the accuracy, completeness, reliability, usability, or suitability for any particular purpose of the data.

4/8/24 1:17 PM      WATER COLUMN/ AVERAGE DEPTH TO WATER



# New Mexico Office of the State Engineer

## Point of Diversion Summary

(quarters are 1=NW 2=NE 3=SW 4=SE)

(quarters are smallest to largest)

(NAD83 UTM in meters)

<b>Well Tag</b>	<b>POD Number</b>	<b>Q64</b>	<b>Q16</b>	<b>Q4</b>	<b>Sec</b>	<b>Tws</b>	<b>Rng</b>	<b>X</b>	<b>Y</b>
	C 02431	4	4	4	17	24S	33E	633175	3564728*

x

**Driller License:****Driller Company:****Driller Name:** UNKNOWN**Drill Start Date:** 01/01/1950**Drill Finish Date:** 12/31/1959**Plug Date:****Log File Date:****PCW Rcv Date:****Source:** Shallow**Pump Type:****Pipe Discharge Size:****Estimated Yield:** 20 GPM**Casing Size:** 5.50**Depth Well:** 525 feet**Depth Water:** 415 feet

x

**Meter Number:** 527**Meter Make:** MASTER MATER**Meter Serial Number:** 8430822**Meter Multiplier:** 10.0000**Number of Dials:** 6**Meter Type:** Diversion**Unit of Measure:** Gallons**Return Flow Percent:****Usage Multiplier:****Reading Frequency:**

### Meter Readings (in Acre-Feet)

Read Date	Year	Mtr Reading	Flag	Rdr	Comment	Mtr Amount Online
04/02/1999	1999	650552	A	ms		0
07/20/1999	1999	686243	A	ms		1.095
11/01/1999	1999	737437	A	ms		1.571
01/10/2000	1999	775085	A	ms		1.155
05/05/2000	2000	816802	A	MB		1.280
07/06/2000	2000	847905	A	mb		0.955
10/25/2000	2000	891939	A	RPT		1.351
01/04/2001	2000	922259	A	RPT		0.930
04/01/2001	2001	936755	A	RPT		0.445
07/01/2001	2001	977796	A	RPT		1.260



10/05/2001	2001	21794	R	RPT Meter Rollover	1.350
04/02/2002	2002	34581	A	RPT	0.392
07/02/2002	2002	48235	A	RPT	0.419
01/01/2003	2002	83585	A	RPT	1.085
04/03/2003	2003	137817	A	RPT	1.664
07/01/2003	2003	205035	A	RPT	2.063
10/02/2003	2003	229999	A	ab	0.766
10/02/2003	2003	0	A	RPT	0
01/01/2004	2003	31963	A	RPT	0.981
04/04/2004	2004	79491	A	RPT	1.459
07/05/2004	2004	115607	A	RPT	1.108
10/04/2004	2004	174955	A	tw	1.821
01/03/2005	2004	263167	A	RPT	2.707
04/05/2005	2005	295061	A	RPT	0.979
07/01/2005	2005	303397	A	RPT	0.256
10/31/2005	2005	340510	A	RPT	1.139
12/31/2005	2005	343044	A	RPT	0.078
04/20/2006	2006	358240	A	RPT	0.466
07/08/2006	2006	385299	A	tw	0.830
10/02/2006	2006	464312	A	tw	2.425
01/01/2007	2006	529902	A	tw	2.013
04/02/2007	2007	564384	A	RPT	1.058
07/31/2007	2007	598238	A	RPT	1.039
10/28/2007	2007	657403	A	RPT	1.816
01/01/2008	2007	665919	A	RPT	0.261
04/16/2008	2008	681782	A	RPT	0.487
07/01/2008	2008	752289	A	RPT	2.164
10/03/2008	2008	853345	A	RPT	3.101
12/31/2008	2008	911746	A	RPT	1.792
04/01/2009	2009	77518	R	RPT Meter Rollover	5.087
07/05/2009	2009	173250	A	RPT	2.938
10/05/2009	2009	237006	A	RPT	1.957
01/01/2010	2009	293782	A	RPT	1.742
04/04/2010	2010	343160	A	RPT	1.515

07/01/2010	2010	413054	A	RPT	2.145
10/01/2010	2010	444699	A	RPT	0.971
12/31/2010	2010	515095	A	RPT	2.160
04/01/2011	2011	566481	A	RPT	1.577
10/08/2011	2011	583050	A	RPT	0.508
12/31/2011	2011	583050	A	RPT	0
04/01/2012	2012	1507	R	RPT Meter Rollover	12.842
07/02/2012	2012	9762	A	RPT	0.253
10/02/2012	2012	86066	A	RPT	2.342
01/01/2013	2012	179867	A	RPT	2.879
04/03/2013	2013	282553	A	tw	3.151
07/01/2013	2013	71526	R	RPT Meter Rollover	24.213
10/03/2013	2013	82080	A	RPT	0.324
12/31/2013	2013	93386	A	RPT	0.347
04/01/2014	2014	653187	A	RPT	0
07/01/2014	2014	764589	A	RPT	3.419
10/03/2014	2014	875000	A	RPT	3.388
01/07/2015	2014	955160	A	RPT	2.460
01/26/2015	2015	965041	A	RPT	0.303
01/27/2015	2015	585131	A	tw	0
03/09/2015	2015	622092	A	RPT	1.134
03/10/2015	2015	0	A	RPT	0
04/05/2015	2015	66072	A	RPT	2.028
07/01/2015	2015	90118	A	RPT	0.738
10/02/2015	2015	185632	A	RPT	2.931
12/31/2015	2015	247746	A	RPT	1.906
04/01/2016	2016	327318	A	RPT	2.442
07/01/2016	2016	401151	A	RPT	2.266
10/01/2016	2016	492395	A	RPT	2.800
01/01/2017	2016	562688	A	RPT	2.157

---

**YTD Meter Amounts:	Year	Amount
	1999	3.821
	2000	4.516
	2001	3.055



2002	1.896
2003	5.474
2004	7.095
2005	2.452
2006	5.734
2007	4.174
2008	7.544
2009	11.724
2010	6.791
2011	2.085
2012	18.316
2013	28.035
2014	9.267
2015	9.040
2016	9.665

x

\*UTM location was derived from PLSS - see Help

The data is furnished by the NMOSE/ISC and is accepted by the recipient with the expressed understanding that the OSE/ISC make no warranties, expressed or implied, concerning the accuracy, completeness, reliability, usability, or suitability for any particular purpose of the data.

4/8/24 1:17 PM




POINT OF DIVERSION SUMMARY

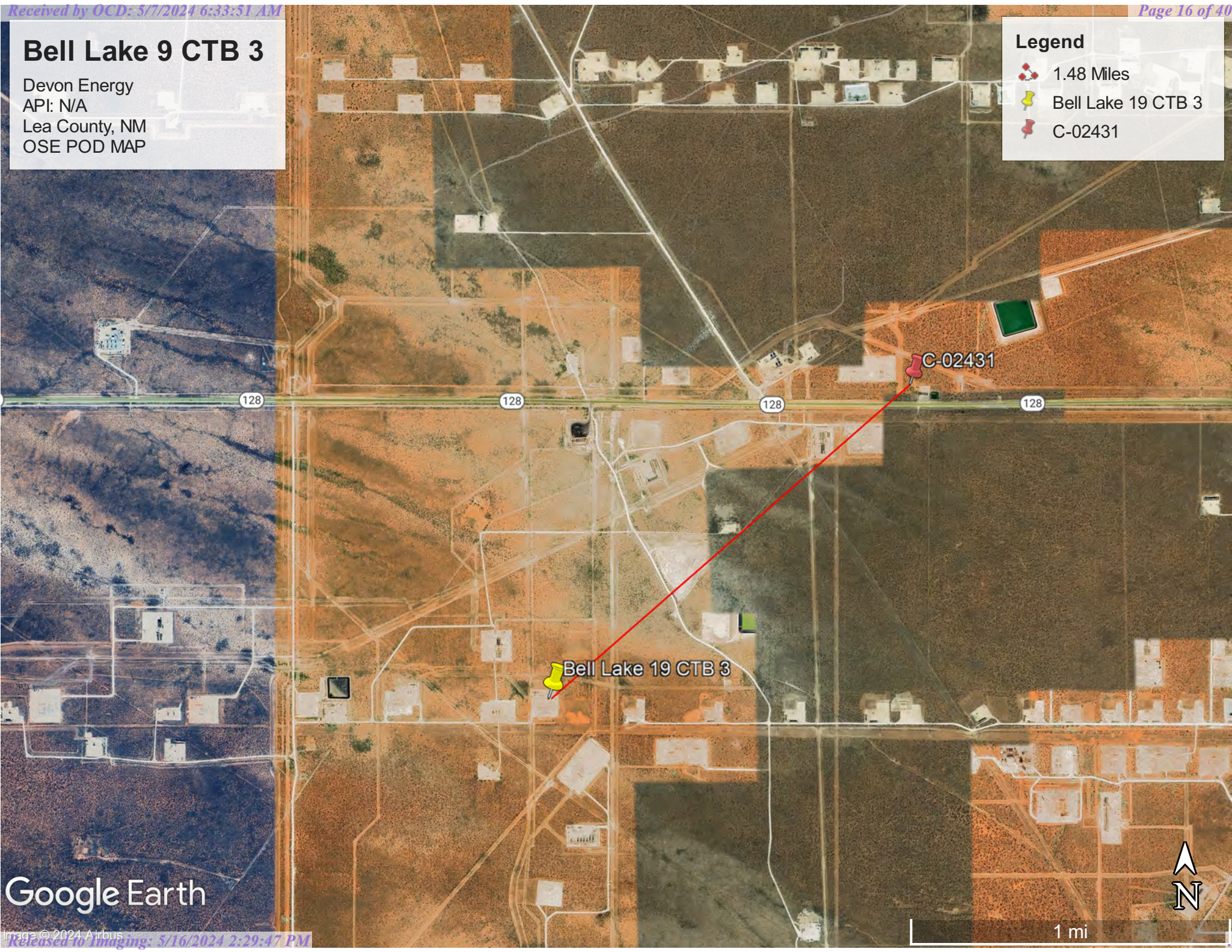


# Bell Lake 9 CTB 3

Devon Energy  
API: N/A  
Lea County, NM  
OSE POD MAP

## Legend

-  1.48 Miles
-  Bell Lake 19 CTB 3
-  C-02431



Google Earth





[USGS Home](#)  
[Contact USGS](#)  
[Search USGS](#)

## National Water Information System: Web Interface

USGS Water Resources

Data Category:


Groundwater ▼

Geographic Area:

United States ▼

GO

Click to hide News Bulletins

- Explore the *NEW* [USGS National Water Dashboard](#) interactive map to access real-time water data from over 13,500 stations nationwide.
- [Full News](#) 

Groundwater levels for the Nation



Important: [Next Generation Monitoring Location Page](#)

### Search Results -- 1 sites found

site\_no list =

- 321005103402301

Minimum number of levels = 1

[Save file of selected sites](#) to local disk for future upload

### USGS 321005103402301 24S.32E.33.42241

Available data for this site

Groundwater: Field measurements ▼

GO

Lea County, New Mexico

Hydrologic Unit Code 13070001

Latitude 32°10'21.6", Longitude 103°40'18.9" NAD83

Land-surface elevation 3,499.00 feet above NGVD29

The depth of the well is 367 feet below land surface.

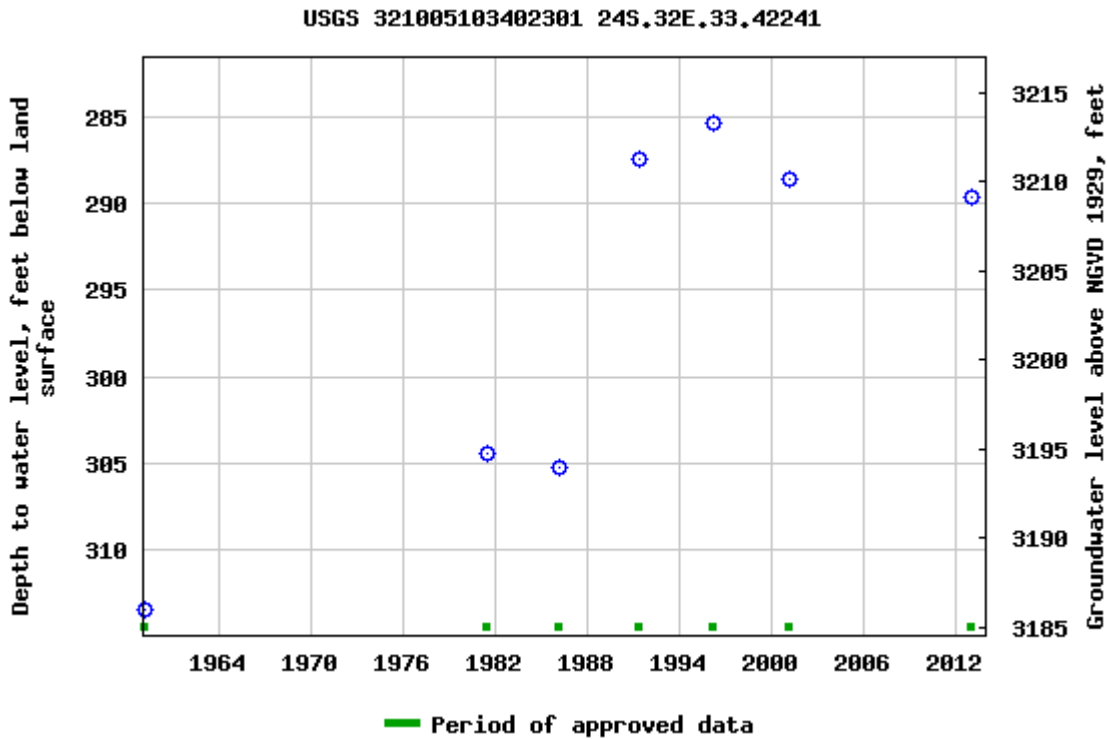
This well is completed in the Other aquifers (N9999OTHER) national aquifer.

This well is completed in the Chinle Formation (231CHNL) local aquifer.



Output formats

<a href="#">Table of data</a>
<a href="#">Tab-separated data</a>
<a href="#">Graph of data</a>
<a href="#">Reselect period</a>



Breaks in the plot represent a gap of at least one year between field measurements.

[Download a presentation-quality graph](#)

- [Questions or Comments](#)
- [Automated retrievals](#)
- [Help](#)
- [Data Tips](#)
- [Explanation of terms](#)
- [Subscribe for system changes](#)
- [News](#)

[Accessibility](#) [FOIA](#) [Privacy](#) [Policies and Notices](#)

[U.S. Department of the Interior](#) | [U.S. Geological Survey](#)

**Title: Groundwater for USA: Water Levels**

**URL: <https://nwis.waterdata.usgs.gov/nwis/gwlevels?>**

Page Contact Information: [USGS Water Data Support Team](#)

Page Last Modified: 2024-04-08 15:16:47 EDT

0.6 0.49 nadww01








# Bell Lake 9 CTB 3

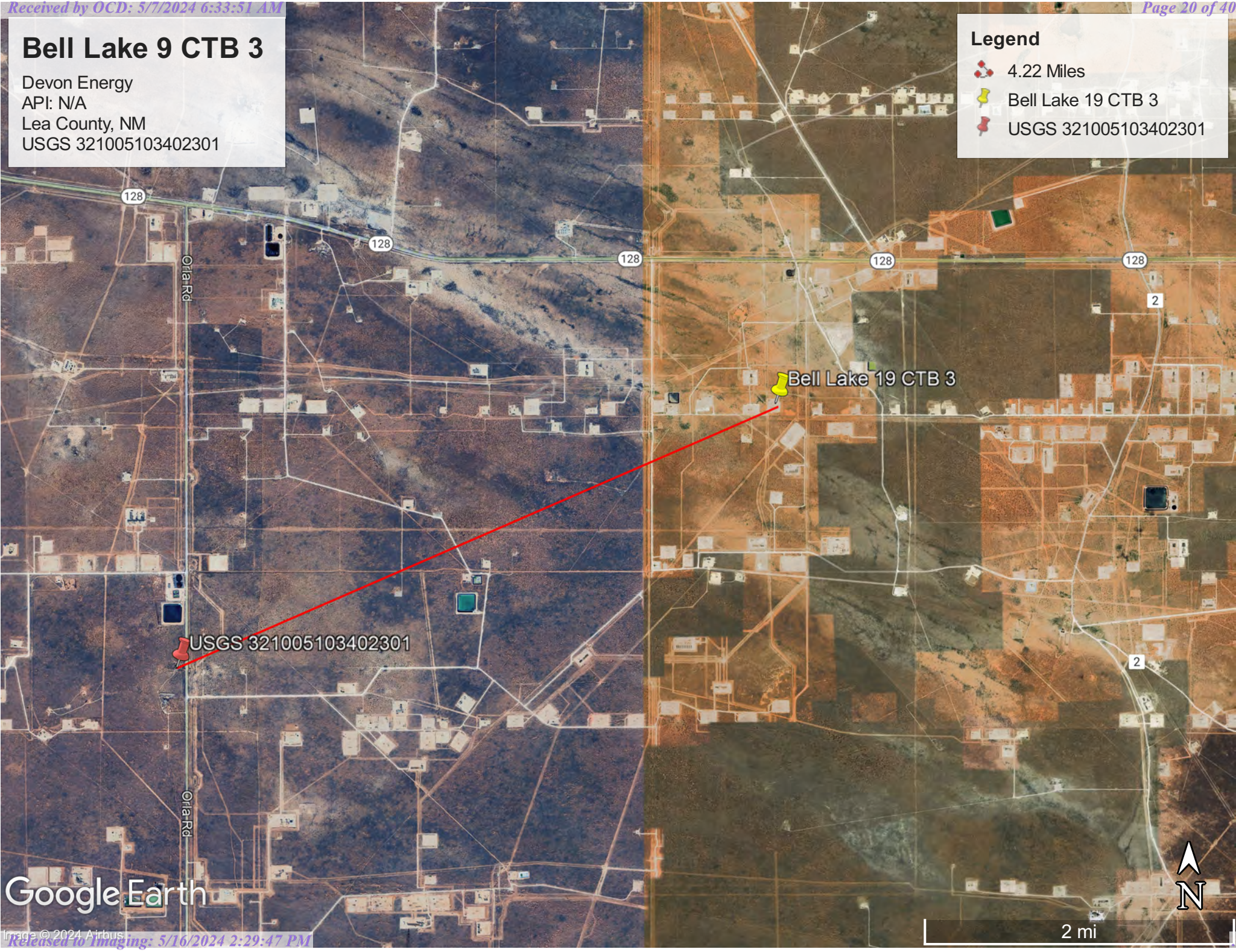
Devon Energy  
API: N/A  
Lea County, NM  
USGS 321005103402301

**Legend**

 4.22 Miles

 Bell Lake 19 CTB 3

 USGS 321005103402301



Google Earth




2 mi

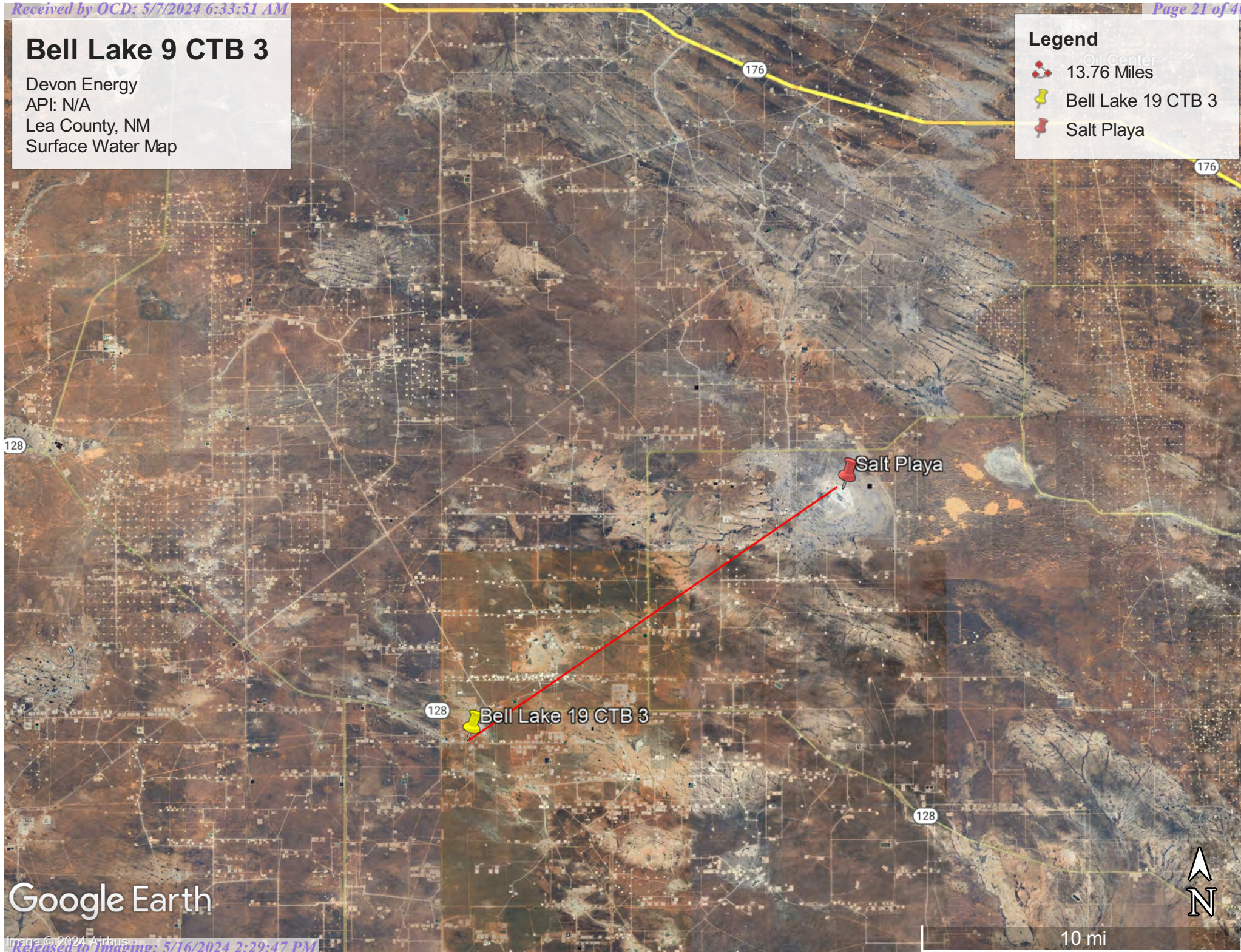


# Bell Lake 9 CTB 3

Devon Energy  
API: N/A  
Lea County, NM  
Surface Water Map

## Legend

-  13.76 Miles
-  Bell Lake 19 CTB 3
-  Salt Playa



Google Earth





Wetlands



April 8, 2024

Wetlands

- |   |                                |   |                                   |   |          |
|---|--------------------------------|---|-----------------------------------|---|----------|
|  | Estuarine and Marine Deepwater |  | Freshwater Emergent Wetland       |  | Lake     |
|  | Estuarine and Marine Wetland   |  | Freshwater Forested/Shrub Wetland |  | Other    |
|   |                                |  | Freshwater Pond                   |  | Riverine |

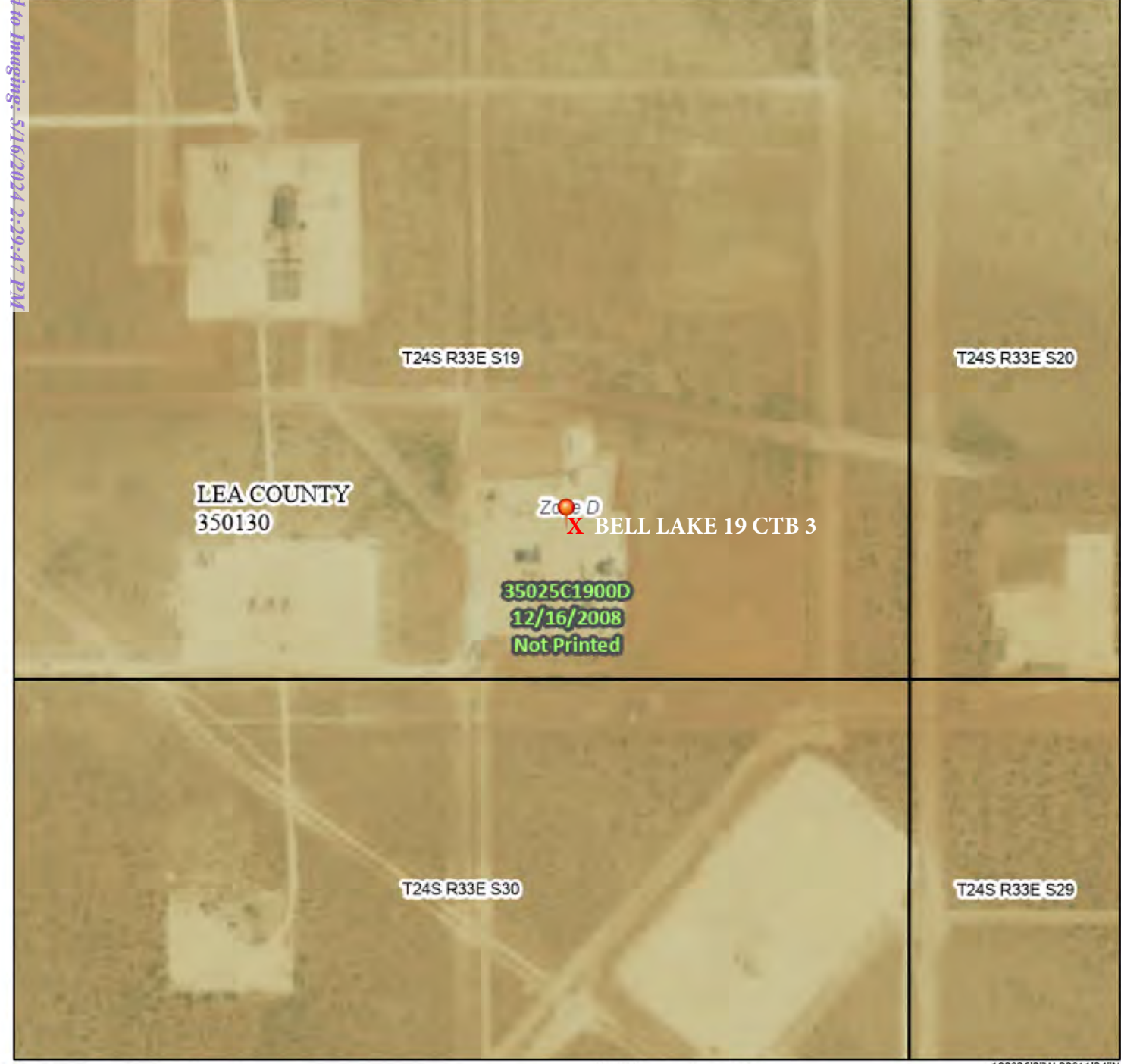
This map is for general reference only. The US Fish and Wildlife Service is not responsible for the accuracy or currentness of the base data shown on this map. All wetlands related data should be used in accordance with the layer metadata found on the Wetlands Mapper web site.



# National Flood Hazard Layer FIRMette



103°36'41"W 32°12'5"N



### Legend

SEE FIS REPORT FOR DETAILED LEGEND AND INDEX MAP FOR FIRM PANEL LAYOUT

SPECIAL FLOOD HAZARD AREAS		Without Base Flood Elevation (BFE) <i>Zone A, V, A99</i>
		With BFE or Depth <i>Zone AE, AO, AH, VE, AR</i>
		Regulatory Floodway
OTHER AREAS OF FLOOD HAZARD		0.2% Annual Chance Flood Hazard, Areas of 1% annual chance flood with average depth less than one foot or with drainage areas of less than one square mile <i>Zone X</i>
		Future Conditions 1% Annual Chance Flood Hazard <i>Zone X</i>
		Area with Reduced Flood Risk due to Levee. See Notes. <i>Zone X</i>
		Area with Flood Risk due to Levee <i>Zone X</i>
OTHER AREAS		NO SCREEN Area of Minimal Flood Hazard <i>Zone X</i>
		Effective LOMRs
GENERAL STRUCTURES		Area of Undetermined Flood Hazard <i>Zone D</i>
		Channel, Culvert, or Storm Sewer
		Levee, Dike, or Floodwall
OTHER FEATURES		20.2 Cross Sections with 1% Annual Chance Water Surface Elevation
		17.5 Coastal Transect
		Base Flood Elevation Line (BFE)
		Limit of Study
		Jurisdiction Boundary
		Coastal Transect Baseline
MAP PANELS		Profile Baseline
		Hydrographic Feature
		Digital Data Available
		No Digital Data Available
		Unmapped

The pin displayed on the map is an approximate point selected by the user and does not represent an authoritative property location.

This map complies with FEMA's standards for the use of digital flood maps if it is not void as described below. The basemap shown complies with FEMA's basemap accuracy standards

The flood hazard information is derived directly from the authoritative NFHL web services provided by FEMA. This map was exported on **4/8/2024 at 3:21 PM** and does not reflect changes or amendments subsequent to this date and time. The NFHL and effective information may change or become superseded by new data over time.

This map image is void if the one or more of the following map elements do not appear: basemap imagery, flood zone labels, legend, scale bar, map creation date, community identifiers, FIRM panel number, and FIRM effective date. Map images for unmapped and unmodernized areas cannot be used for regulatory purposes.

Released to Imaging: 5/16/2024 2:29:47 PM

Received by OCD: 5/16/2024 6:33:51 AM



Map Unit Description: Berino-Cacique loamy fine sands association---Lea County, New Mexico

---

## Lea County, New Mexico

### BE—Berino-Cacique loamy fine sands association

#### Map Unit Setting

*National map unit symbol:* dmpd

*Elevation:* 3,000 to 3,900 feet

*Mean annual precipitation:* 10 to 13 inches

*Mean annual air temperature:* 60 to 62 degrees F

*Frost-free period:* 190 to 205 days

*Farmland classification:* Not prime farmland

#### Map Unit Composition

*Berino and similar soils:* 50 percent

*Cacique and similar soils:* 40 percent

*Minor components:* 10 percent

*Estimates are based on observations, descriptions, and transects of the mapunit.*

#### Description of Berino

##### Setting

*Landform:* Plains

*Landform position (three-dimensional):* Rise

*Down-slope shape:* Linear

*Across-slope shape:* Linear

*Parent material:* Sandy eolian deposits derived from sedimentary rock over calcareous sandy alluvium derived from sedimentary rock

##### Typical profile

*A - 0 to 6 inches:* loamy fine sand

*Btk - 6 to 60 inches:* sandy clay loam

##### Properties and qualities

*Slope:* 0 to 3 percent

*Depth to restrictive feature:* More than 80 inches

*Drainage class:* Well drained

*Runoff class:* Low

*Capacity of the most limiting layer to transmit water*

*(Ksat):* Moderately high to high (0.60 to 2.00 in/hr)

*Depth to water table:* More than 80 inches

*Frequency of flooding:* None

*Frequency of ponding:* None

*Calcium carbonate, maximum content:* 40 percent

*Gypsum, maximum content:* 1 percent

*Maximum salinity:* Nonsaline to very slightly saline (0.0 to 2.0 mmhos/cm)

*Sodium adsorption ratio, maximum:* 2.0

*Available water supply, 0 to 60 inches:* Moderate (about 8.7 inches)

Map Unit Description: Berino-Cacique loamy fine sands association---Lea County, New Mexico

---

**Interpretive groups**

*Land capability classification (irrigated):* None specified

*Land capability classification (nonirrigated):* 7c

*Hydrologic Soil Group:* B

*Ecological site:* R070BD003NM - Loamy Sand

*Hydric soil rating:* No

**Description of Cacique****Setting**

*Landform:* Plains

*Landform position (three-dimensional):* Rise

*Down-slope shape:* Linear

*Across-slope shape:* Linear

*Parent material:* Calcareous eolian deposits derived from sedimentary rock

**Typical profile**

*A - 0 to 12 inches:* loamy fine sand

*Bt - 12 to 28 inches:* sandy clay loam

*Bkm - 28 to 38 inches:* cemented material

**Properties and qualities**

*Slope:* 0 to 3 percent

*Depth to restrictive feature:* 20 to 40 inches to petrocalcic

*Drainage class:* Well drained

*Runoff class:* High

*Capacity of the most limiting layer to transmit water (Ksat):* Very low to moderately low (0.00 to 0.06 in/hr)

*Depth to water table:* More than 80 inches

*Frequency of flooding:* None

*Frequency of ponding:* None

*Calcium carbonate, maximum content:* 5 percent

*Gypsum, maximum content:* 1 percent

*Maximum salinity:* Nonsaline to very slightly saline (0.0 to 2.0 mmhos/cm)

*Sodium adsorption ratio, maximum:* 2.0

*Available water supply, 0 to 60 inches:* Low (about 3.6 inches)

**Interpretive groups**

*Land capability classification (irrigated):* None specified

*Land capability classification (nonirrigated):* 7c

*Hydrologic Soil Group:* C

*Ecological site:* R070BD004NM - Sandy

*Hydric soil rating:* No

**Minor Components****Maljamar**

*Percent of map unit:* 6 percent

*Ecological site:* R077CY028TX - Limy Upland 16-21" PZ

*Hydric soil rating:* No

Map Unit Description: Berino-Cacique loamy fine sands association---Lea County, New Mexico

---

**Palomas**

*Percent of map unit:* 4 percent

*Ecological site:* R070BD003NM - Loamy Sand

*Hydric soil rating:* No

**Data Source Information**

Soil Survey Area: Lea County, New Mexico

Survey Area Data: Version 20, Sep 6, 2023





Pima Environmental Services

## **Appendix B**

### 48-Hour Notification

**lynsey@pimaoil.com**

---

**From:** Gio PimaOil <gio@pimaoil.com>  
**Sent:** Wednesday, April 24, 2024 3:04 PM  
**To:** Lynsey Pima Oil  
**Subject:** Fwd: [EXTERNAL] The Oil Conservation Division (OCD) has accepted the application, Application ID: 337324

----- Forwarded message -----

**From:** Woodall, Dale <[Dale.Woodall@dvn.com](mailto:Dale.Woodall@dvn.com)>  
**Date:** Wed, Apr 24, 2024 at 3:02 PM  
**Subject:** Fwd: [EXTERNAL] The Oil Conservation Division (OCD) has accepted the application, Application ID: 337324  
**To:** Gio PimaOil <[gio@pimaoil.com](mailto:gio@pimaoil.com)>

Dale Woodall  
*Environmental Professional*  
*Hobbs, NM*  
*Office: 575-748-1838*  
*Mobile: 405-318-4697*  
[Dale.Woodall@dvn.com](mailto:Dale.Woodall@dvn.com)

---

**From:** [OCDOnline@state.nm.us](mailto:OCDOnline@state.nm.us) <[OCDOnline@state.nm.us](mailto:OCDOnline@state.nm.us)>  
**Sent:** Wednesday, April 24, 2024 2:55:21 PM  
**To:** Woodall, Dale <[Dale.Woodall@dvn.com](mailto:Dale.Woodall@dvn.com)>  
**Subject:** [EXTERNAL] The Oil Conservation Division (OCD) has accepted the application, Application ID: 337324

To whom it may concern (c/o Dale Woodall for DEVON ENERGY PRODUCTION COMPANY, LP),

The OCD has received the submitted *Notification for Liner Inspection for a Release* (C-141L), for incident ID (n#) nAPP2409945367.

The liner inspection is expected to take place:

**When:** 04/26/2024 @ 15:20  
**Where:** P-19-24S-33E 481 FSL 1152 FEL (32.19711,-103.60613)

**Additional Information:** Andrew Franco, PIMA 806-200-0054

**Additional Instructions:** P-19-24S-33E, ( 32.19711,-103.60613 NAD83) From the intersection of NM 128

and County Rd 2, travel west on NM 128 for 3.11 miles, turn south on Lease Rd for 1 mile, turn east on lease Rd for 0.64 of a mile, turn north on lease Rd for 0.22 of a mile, arriving to location on the right.

An OCD representative may be available onsite at the date and time reported. In the absence or presence of an OCD representative, liner inspection pursuant to 19.15.29.11.A(5)(a) NMAC is required. Should there be a change in the scheduled date and time of the sampling event, then another notification should be resubmitted through OCD permitting as soon as possible.

- **Failure to notify the OCD of liner inspections including any changes in date/time per the requirements of 19.15.29.11.A(5)(a)(ii) NMAC, may result in the inspection not being accepted.**

If you have any questions regarding this application, or don't know why you have received this email, please contact us.

**New Mexico Energy, Minerals and Natural Resources Department**

1220 South St. Francis Drive  
Santa Fe, NM 87505

Confidentiality Warning: This message and any attachments are intended only for the use of the intended recipient(s), are confidential, and may be privileged. If you are not the intended recipient, you are hereby notified that any review, retransmission, conversion to hard copy, copying, circulation or other use of all or any portion of this message and any attachments is strictly prohibited. If you are not the intended recipient, please notify the sender immediately by return e-mail, and delete this message and any attachments from your system.

--

*Gio Gomex*

Project Manager

cell-806-782-1151

Office- 575-964-7740

**Pima Environmental Services, LLC.**





Pima Environmental Services

## **Appendix C**

Liner Inspection Form

Photographic Documentation



Pima Environmental Services, LLC

**Liner Inspection Form**Company Name: Devon EnergySite: Bell lake 19 CTB 3Lat/Long: 32.19711, -103.60613NMOCD Incident ID  
& Incident Date: NAPP2409945367 4/5/20242-Day Notification  
Sent: via Email by Dale Woodall on OCD portal 4/24/2024Inspection Date: 4/26/2024

Liner Type:      Earthen w/liner                      Earthen no liner                      Polystar

**Steel w/poly liner**                      Steel w/spray epoxy                      No Liner

Other: \_\_\_\_\_

Visualization	Yes	No	Comments
Is there a tear in the liner?		X	
Are there holes in the liner?		X	
Is the liner retaining any fluids?	X		Fluid from power washing the Liner
Does the liner have integrity to contain a leak?	X		

Comments: \_\_\_\_\_

Inspector Name: Andrew Franco      Inspector Signature: Andrew Franco



## SITE PHOTOGRAPHS

### DEVON ENERGY

#### Bell Lake 19 CTB 3

#### Liner Inspection









**District I**  
1625 N. French Dr., Hobbs, NM 88240  
Phone:(575) 393-6161 Fax:(575) 393-0720  
**District II**  
811 S. First St., Artesia, NM 88210  
Phone:(575) 748-1283 Fax:(575) 748-9720  
**District III**  
1000 Rio Brazos Rd., Aztec, NM 87410  
Phone:(505) 334-6178 Fax:(505) 334-6170  
**District IV**  
1220 S. St Francis Dr., Santa Fe, NM 87505  
Phone:(505) 476-3470 Fax:(505) 476-3462

State of New Mexico  
Energy, Minerals and Natural Resources  
Oil Conservation Division  
1220 S. St Francis Dr.  
Santa Fe, NM 87505

QUESTIONS  
  
Action 341451

QUESTIONS

Operator: DEVON ENERGY PRODUCTION COMPANY, LP 333 West Sheridan Ave. Oklahoma City, OK 73102	OGRID:	6137
	Action Number:	341451
	Action Type:	[C-141] Remediation Closure Request C-141 (C-141-v-Closure)

QUESTIONS

Prerequisites	
Incident ID (n#)	nAPP2409945367
Incident Name	NAPP2409945367 BELL LAKE 19 CTB 3 @ 0
Incident Type	Produced Water Release
Incident Status	Remediation Closure Report Received
Incident Facility	[fAPP2123636889] BELL LAKE 19 CTB 3

Location of Release Source	
Please answer all the questions in this group.	
Site Name	BELL LAKE 19 CTB 3
Date Release Discovered	04/05/2024
Surface Owner	State

Incident Details	
Please answer all the questions in this group.	
Incident Type	Produced Water Release
Did this release result in a fire or is the result of a fire	No
Did this release result in any injuries	No
Has this release reached or does it have a reasonable probability of reaching a watercourse	No
Has this release endangered or does it have a reasonable probability of endangering public health	No
Has this release substantially damaged or will it substantially damage property or the environment	No
Is this release of a volume that is or may with reasonable probability be detrimental to fresh water	No

Nature and Volume of Release	
Material(s) released, please answer all that apply below. Any calculations or specific justifications for the volumes provided should be attached to the follow-up C-141 submission.	
Crude Oil Released (bbls) Details	Not answered.
Produced Water Released (bbls) Details	Cause: Equipment Failure   Pump   Produced Water   Released: 6 BBL   Recovered: 6 BBL   Lost: 0 BBL.
Is the concentration of chloride in the produced water >10,000 mg/l	No
Condensate Released (bbls) Details	Not answered.
Natural Gas Vented (Mcf) Details	Not answered.
Natural Gas Flared (Mcf) Details	Not answered.
Other Released Details	Not answered.
Are there additional details for the questions above (i.e. any answer containing Other, Specify, Unknown, and/or Fire, or any negative lost amounts)	leak on pump seal causing spill into a lined containment. pump was turned off and isolated to stop the leak.



**District I**  
1625 N. French Dr., Hobbs, NM 88240  
Phone:(575) 393-6161 Fax:(575) 393-0720  
**District II**  
811 S. First St., Artesia, NM 88210  
Phone:(575) 748-1283 Fax:(575) 748-9720  
**District III**  
1000 Rio Brazos Rd., Aztec, NM 87410  
Phone:(505) 334-6178 Fax:(505) 334-6170  
**District IV**  
1220 S. St Francis Dr., Santa Fe, NM 87505  
Phone:(505) 476-3470 Fax:(505) 476-3462

**State of New Mexico**  
**Energy, Minerals and Natural Resources**  
**Oil Conservation Division**  
**1220 S. St Francis Dr.**  
**Santa Fe, NM 87505**

QUESTIONS, Page 2  
  
Action 341451

**QUESTIONS (continued)**

Operator: DEVON ENERGY PRODUCTION COMPANY, LP 333 West Sheridan Ave. Oklahoma City, OK 73102	OGRID:
	6137
	Action Number:
	341451
Action Type:	
[C-141] Remediation Closure Request C-141 (C-141-v-Closure)	

**QUESTIONS**

Nature and Volume of Release (continued)	
Is this a gas only submission (i.e. only significant Mcf values reported)	No, according to supplied volumes this does not appear to be a "gas only" report.
Was this a major release as defined by Subsection A of 19.15.29.7 NMAC	No
Reasons why this would be considered a submission for a notification of a major release	Unavailable.
With the implementation of the 19.15.27 NMAC (05/25/2021), venting and/or flaring of natural gas (i.e. gas only) are to be submitted on the C-129 form.	

Initial Response	
The responsible party must undertake the following actions immediately unless they could create a safety hazard that would result in injury.	
The source of the release has been stopped	True
The impacted area has been secured to protect human health and the environment	True
Released materials have been contained via the use of berms or dikes, absorbent pads, or other containment devices	True
All free liquids and recoverable materials have been removed and managed appropriately	True
If all the actions described above have not been undertaken, explain why	Not answered.
Per Paragraph (4) of Subsection B of 19.15.29.8 NMAC the responsible party may commence remediation immediately after discovery of a release. If remediation has begun, please prepare and attach a narrative of actions to date in the follow-up C-141 submission. If remedial efforts have been successfully completed or if the release occurred within a lined containment area (see Subparagraph (a) of Paragraph (5) of Subsection A of 19.15.29.11 NMAC), please prepare and attach all information needed for closure evaluation in the follow-up C-141 submission.	
I hereby certify that the information given above is true and complete to the best of my knowledge and understand that pursuant to OCD rules and regulations all operators are required to report and/or file certain release notifications and perform corrective actions for releases which may endanger public health or the environment. The acceptance of a C-141 report by the OCD does not relieve the operator of liability should their operations have failed to adequately investigate and remediate contamination that pose a threat to groundwater, surface water, human health or the environment. In addition, OCD acceptance of a C-141 report does not relieve the operator of responsibility for compliance with any other federal, state, or local laws and/or regulations.	
I hereby agree and sign off to the above statement	Name: Dale Woodall Title: EHS Professional Email: Dale.Woodall@dmv.com Date: 05/07/2024

**District I**

1625 N. French Dr., Hobbs, NM 88240  
Phone:(575) 393-6161 Fax:(575) 393-0720

**District II**

811 S. First St., Artesia, NM 88210  
Phone:(575) 748-1283 Fax:(575) 748-9720

**District III**

1000 Rio Brazos Rd., Aztec, NM 87410  
Phone:(505) 334-6178 Fax:(505) 334-6170

**District IV**

1220 S. St Francis Dr., Santa Fe, NM 87505  
Phone:(505) 476-3470 Fax:(505) 476-3462

**State of New Mexico**  
**Energy, Minerals and Natural Resources**  
**Oil Conservation Division**  
**1220 S. St Francis Dr.**  
**Santa Fe, NM 87505**

QUESTIONS, Page 3

Action 341451

**QUESTIONS (continued)**

Operator: DEVON ENERGY PRODUCTION COMPANY, LP 333 West Sheridan Ave. Oklahoma City, OK 73102	OGRID:	6137
	Action Number:	341451
	Action Type:	[C-141] Remediation Closure Request C-141 (C-141-v-Closure)

**QUESTIONS****Site Characterization**

Please answer all the questions in this group (only required when seeking remediation plan approval and beyond). This information must be provided to the appropriate district office no later than 90 days after the release discovery date.

What is the shallowest depth to groundwater beneath the area affected by the release in feet below ground surface (ft bgs)	Between 100 and 500 (ft.)
What method was used to determine the depth to ground water	NM OSE iWaters Database Search
Did this release impact groundwater or surface water	No
<b>What is the minimum distance, between the closest lateral extents of the release and the following surface areas:</b>	
A continuously flowing watercourse or any other significant watercourse	Greater than 5 (mi.)
Any lakebed, sinkhole, or playa lake (measured from the ordinary high-water mark)	Greater than 5 (mi.)
An occupied permanent residence, school, hospital, institution, or church	Greater than 5 (mi.)
A spring or a private domestic fresh water well used by less than five households for domestic or stock watering purposes	Greater than 5 (mi.)
Any other fresh water well or spring	Greater than 5 (mi.)
Incorporated municipal boundaries or a defined municipal fresh water well field	Greater than 5 (mi.)
A wetland	Between 1 and 5 (mi.)
A subsurface mine	Greater than 5 (mi.)
An (non-karst) unstable area	Greater than 5 (mi.)
Categorize the risk of this well / site being in a karst geology	Low
A 100-year floodplain	Greater than 5 (mi.)
Did the release impact areas not on an exploration, development, production, or storage site	No

**Remediation Plan**

Please answer all the questions that apply or are indicated. This information must be provided to the appropriate district office no later than 90 days after the release discovery date.

Requesting a remediation plan approval with this submission	Yes
Attach a comprehensive report demonstrating the lateral and vertical extents of soil contamination associated with the release have been determined, pursuant to 19.15.29.11 NMAC and 19.15.29.13 NMAC.	
Have the lateral and vertical extents of contamination been fully delineated	Yes
Was this release entirely contained within a lined containment area	Yes
Per Subsection B of 19.15.29.11 NMAC unless the site characterization report includes completed efforts at remediation, the report must include a proposed remediation plan in accordance with 19.15.29.12 NMAC, which includes the anticipated timelines for beginning and completing the remediation.	
On what estimated date will the remediation commence	04/26/2024
On what date will (or did) the final sampling or liner inspection occur	04/26/2024
On what date will (or was) the remediation complete(d)	04/26/2024
What is the estimated surface area (in square feet) that will be remediated	0
What is the estimated volume (in cubic yards) that will be remediated	0
These estimated dates and measurements are recognized to be the best guess or calculation at the time of submission and may (be) change(d) over time as more remediation efforts are completed.	
The OCD recognizes that proposed remediation measures may have to be minimally adjusted in accordance with the physical realities encountered during remediation. If the responsible party has any need to significantly deviate from the remediation plan proposed, then it should consult with the division to determine if another remediation plan submission is required.	

**District I**

1625 N. French Dr., Hobbs, NM 88240  
Phone:(575) 393-6161 Fax:(575) 393-0720

**District II**

811 S. First St., Artesia, NM 88210  
Phone:(575) 748-1283 Fax:(575) 748-9720

**District III**

1000 Rio Brazos Rd., Aztec, NM 87410  
Phone:(505) 334-6178 Fax:(505) 334-6170

**District IV**

1220 S. St Francis Dr., Santa Fe, NM 87505  
Phone:(505) 476-3470 Fax:(505) 476-3462

**State of New Mexico**  
**Energy, Minerals and Natural Resources**  
**Oil Conservation Division**  
**1220 S. St Francis Dr.**  
**Santa Fe, NM 87505**

QUESTIONS, Page 4

Action 341451

**QUESTIONS (continued)**

Operator: DEVON ENERGY PRODUCTION COMPANY, LP 333 West Sheridan Ave. Oklahoma City, OK 73102	OGRID:	6137
	Action Number:	341451
	Action Type:	[C-141] Remediation Closure Request C-141 (C-141-v-Closure)

**QUESTIONS****Remediation Plan (continued)**

Please answer all the questions that apply or are indicated. This information must be provided to the appropriate district office no later than 90 days after the release discovery date.

**This remediation will (or is expected to) utilize the following processes to remediate / reduce contaminants:**

(Select all answers below that apply.)

Is (or was) there affected material present needing to be removed	Yes
Is (or was) there a power wash of the lined containment area (to be) performed	Yes
OTHER (Non-listed remedial process)	No

Per Subsection B of 19.15.29.11 NMAC unless the site characterization report includes completed efforts at remediation, the report must include a proposed remediation plan in accordance with 19.15.29.12 NMAC, which includes the anticipated timelines for beginning and completing the remediation.

I hereby certify that the information given above is true and complete to the best of my knowledge and understand that pursuant to OCD rules and regulations all operators are required to report and/or file certain release notifications and perform corrective actions for releases which may endanger public health or the environment. The acceptance of a C-141 report by the OCD does not relieve the operator of liability should their operations have failed to adequately investigate and remediate contamination that pose a threat to groundwater, surface water, human health or the environment. In addition, OCD acceptance of a C-141 report does not relieve the operator of responsibility for compliance with any other federal, state, or local laws and/or regulations.

I hereby agree and sign off to the above statement	Name: Dale Woodall Title: EHS Professional Email: Dale.Woodall@dmn.com Date: 05/07/2024
--	--

The OCD recognizes that proposed remediation measures may have to be minimally adjusted in accordance with the physical realities encountered during remediation. If the responsible party has any need to significantly deviate from the remediation plan proposed, then it should consult with the division to determine if another remediation plan submission is required.



**District I**

1625 N. French Dr., Hobbs, NM 88240  
Phone:(575) 393-6161 Fax:(575) 393-0720

**District II**

811 S. First St., Artesia, NM 88210  
Phone:(575) 748-1283 Fax:(575) 748-9720

**District III**

1000 Rio Brazos Rd., Aztec, NM 87410  
Phone:(505) 334-6178 Fax:(505) 334-6170

**District IV**

1220 S. St Francis Dr., Santa Fe, NM 87505  
Phone:(505) 476-3470 Fax:(505) 476-3462

**State of New Mexico**  
**Energy, Minerals and Natural Resources**  
**Oil Conservation Division**  
**1220 S. St Francis Dr.**  
**Santa Fe, NM 87505**

QUESTIONS, Page 6

Action 341451

**QUESTIONS (continued)**

Operator: DEVON ENERGY PRODUCTION COMPANY, LP 333 West Sheridan Ave. Oklahoma City, OK 73102	OGRID:	6137
	Action Number:	341451
	Action Type:	[C-141] Remediation Closure Request C-141 (C-141-v-Closure)

**QUESTIONS**

<b>Liner Inspection Information</b>	
Last liner inspection notification (C-141L) recorded	337324
Liner inspection date pursuant to Subparagraph (a) of Paragraph (5) of Subsection A of 19.15.29.11 NMAC	04/26/2024
Was all the impacted materials removed from the liner	Yes
What was the liner inspection surface area in square feet	6750

**Remediation Closure Request**

Only answer the questions in this group if seeking remediation closure for this release because all remediation steps have been completed.

Requesting a remediation closure approval with this submission	Yes
Have the lateral and vertical extents of contamination been fully delineated	Yes
Was this release entirely contained within a lined containment area	Yes
What was the total surface area (in square feet) remediated	0
What was the total volume (cubic yards) remediated	0
Summarize any additional remediation activities not included by answers (above)	inspected for any pinholes or punctures or any evidence that the spilled fluids left containment

The responsible party must attach information demonstrating they have complied with all applicable closure requirements and any conditions or directives of the OCD. This demonstration should be in the form of a comprehensive report (in .pdf format) including a scaled site map, sampling diagrams, relevant field notes, photographs of any excavation prior to backfilling, laboratory data including chain of custody documents of final sampling, and a narrative of the remedial activities. Refer to 19.15.29.12 NMAC.

I hereby certify that the information given above is true and complete to the best of my knowledge and understand that pursuant to OCD rules and regulations all operators are required to report and/or file certain release notifications and perform corrective actions for releases which may endanger public health or the environment. The acceptance of a C-141 report by the OCD does not relieve the operator of liability should their operations have failed to adequately investigate and remediate contamination that pose a threat to groundwater, surface water, human health or the environment. In addition, OCD acceptance of a C-141 report does not relieve the operator of responsibility for compliance with any other federal, state, or local laws and/or regulations. The responsible party acknowledges they must substantially restore, reclaim, and re-vegetate the impacted surface area to the conditions that existed prior to the release or their final land use in accordance with 19.15.29.13 NMAC including notification to the OCD when reclamation and re-vegetation are complete.

I hereby agree and sign off to the above statement	Name: Dale Woodall Title: EHS Professional Email: Dale.Woodall@dmn.com Date: 05/07/2024
--	--

**District I**  
1625 N. French Dr., Hobbs, NM 88240  
Phone:(575) 393-6161 Fax:(575) 393-0720  
**District II**  
811 S. First St., Artesia, NM 88210  
Phone:(575) 748-1283 Fax:(575) 748-9720  
**District III**  
1000 Rio Brazos Rd., Aztec, NM 87410  
Phone:(505) 334-6178 Fax:(505) 334-6170  
**District IV**  
1220 S. St Francis Dr., Santa Fe, NM 87505  
Phone:(505) 476-3470 Fax:(505) 476-3462

**State of New Mexico**  
**Energy, Minerals and Natural Resources**  
**Oil Conservation Division**  
**1220 S. St Francis Dr.**  
**Santa Fe, NM 87505**

CONDITIONS  
  
Action 341451

CONDITIONS

Operator: DEVON ENERGY PRODUCTION COMPANY, LP 333 West Sheridan Ave. Oklahoma City, OK 73102	OGRID: 6137
	Action Number: 341451
	Action Type: [C-141] Remediation Closure Request C-141 (C-141-v-Closure)

CONDITIONS

Created By	Condition	Condition Date
rhamlet	We have received your Remediation Closure Report for Incident #NAPP2409945367 BELL LAKE 19 CTB 3, thank you. This Remediation Closure Report is approved.	5/16/2024