

Volume calculator

There was no volume calculator prepared when the spill occurred.



**Pima Environmental Services**  
**5614 N. Lovington Highway**  
**Hobbs, NM 88240**  
**575-964-7740**

March 19, 2024

Bureau of Land Management  
620 East Lone Street  
Carlsbad, NM 88220

NMOCD District 2  
811 S. First St  
Artesia, NM, 88210

**RE: Liner Inspection and Closure Report**  
**Lone Tree Draw 13 State Com 8H**  
**API No. 30-015-41738**  
**GPS: Latitude 32.4872093 Longitude -104.140892**  
**UL- B, Section 13, Township 21S, Range 27E,**  
**Eddy County, NM**  
**NMOCD Reference No. NAB1801735905**

Devon Energy Production Company (Devon) has contracted Pima Environmental Services, LLC (Pima) to perform a liner inspection and prepare this closure report for a produced water release that happened on the Lone Tree Draw 13 State Com 8H (Lone). This incident was assigned Incident ID NAB1801735905, by the New Mexico Oil Conservation Division (NMOCD).

#### **Site Information and Site Characterization**

The Lone is located approximately six (6) miles northeast of Carlsbad, NM. This spill site is in Unit B, Section 13, Township 21S, Range 27E, Latitude 32.4872093 Longitude -104.140892, Eddy County, NM.

Based upon New Mexico Office of the State Engineer well water data, depth to the nearest groundwater in this area is 9 feet below grade surface (BGS). According to the United States Geological Survey well water data, depth to the nearest groundwater in this area is greater than 17.50 feet BGS. See Appendix A for referenced water surveys. The Lone is in a high karst area.

#### **Release Information**

**NAB1801735905:** On October 24, 2017. A water storage tank spilled over due to a communication failure. Approximately 20 barrels (bbls) of produced water were released from the tank. A vacuum truck was dispatched and recovered all 20 bbls of fluid from the lined SPCC containment ring. Once fluids were removed, the liner was visually inspected by Devon field staff for any pinholes or punctures, and none were found. Based on this inspection there is no evidence that the spilled fluids left containment.

#### **Site Assessment and Liner Inspection**

On March 14, 2024, after submitting the 48-hour notification application ID:322209 to the OCD, Pima Environmental conducted a liner inspection at this location. Pima concluded that this liner and containment maintained its integrity and was able to retain the fluids. The liner inspection form and photographic documentation can be found in Appendix C.

**Countermeasures Due to Rejection (179982)**

The previously submitted report faced rejection due to multiple concerns raised by the NMOCD. The summary of the rejection outlined the following reasons:

The Closure Report is Denied. Photos around the tanks show oil on the liner. The liner should be power washed and cleaned, so the surface of the liner can be inspected. The pictures are low resolution and taken at a distance. Please, include pictures of this immediate area around the tanks after the liner has been cleaned and reinspected.

- The Liner inspection photographs have been retaken displaying the power wash of the Liner and photographs around the tanks displaying containment liner integrity.

**Closure Request**

After careful review, Pima requests that this incident, NAB1801735905, be closed. Devon has complied with the applicable closure requirements.

Should you have any questions or need additional information, please feel free to contact Gio Gomez at 575-964-7740 or [Gio@pimaoil.com](mailto:Gio@pimaoil.com).

Respectfully,



Gio Gomez  
Project Manager  
Pima Environmental Services, LLC

**Attachments**

Figures:

- 1- Location Map
- 2- Topographic Map
- 3- Karst Map
- 4- Site Map

Appendices:

- Appendix A- Referenced Water Survey
- Appendix B- 48 Hour Notification
- Appendix C- Liner Inspection Form & Photographic Documentation



Pima Environmental Services

**Figures:**

1-Location Map

2-Topographic Map

3-Karst Map



4-Site Map

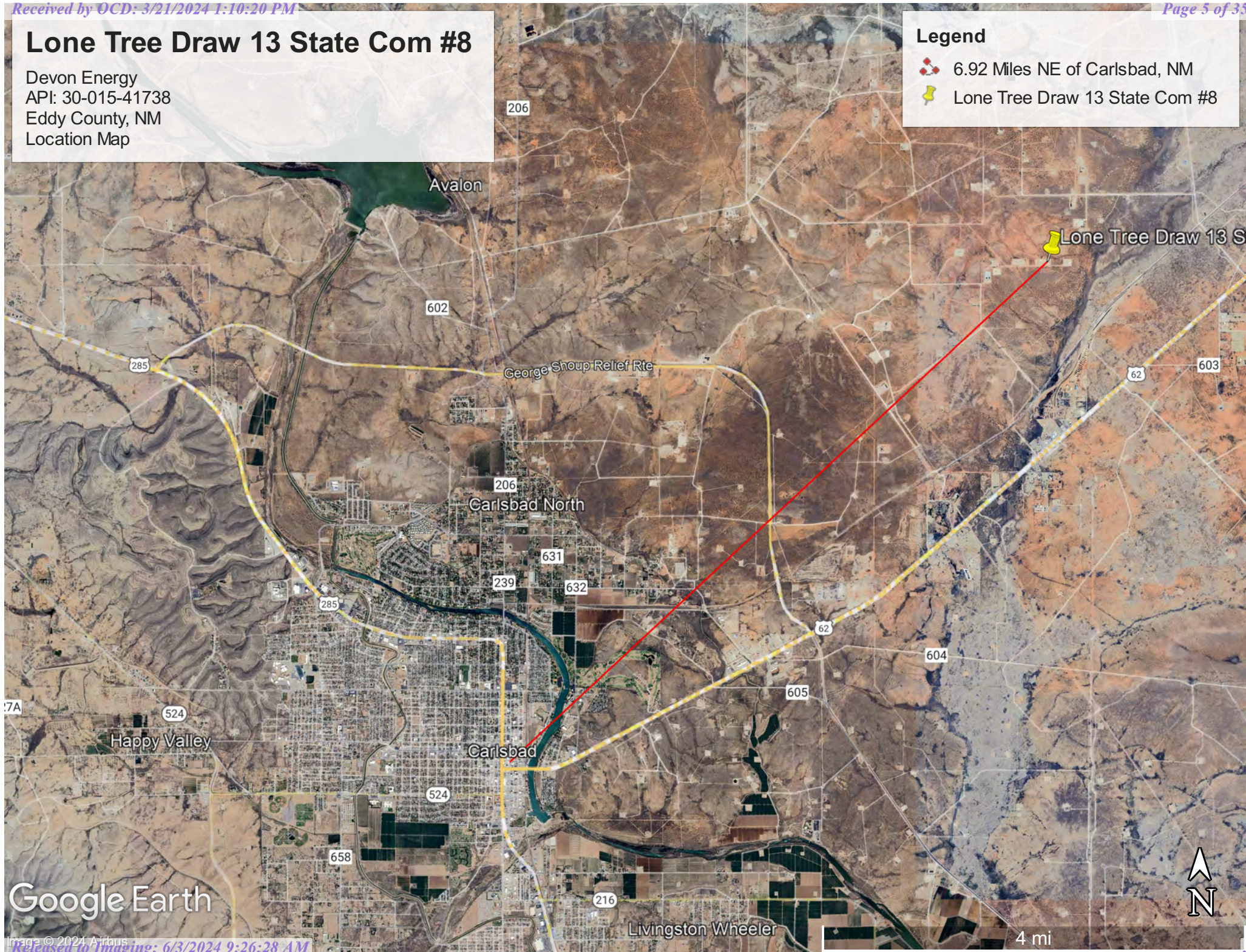


# Lone Tree Draw 13 State Com #8

Devon Energy  
API: 30-015-41738  
Eddy County, NM  
Location Map

## Legend

-  6.92 Miles NE of Carlsbad, NM
-  Lone Tree Draw 13 State Com #8

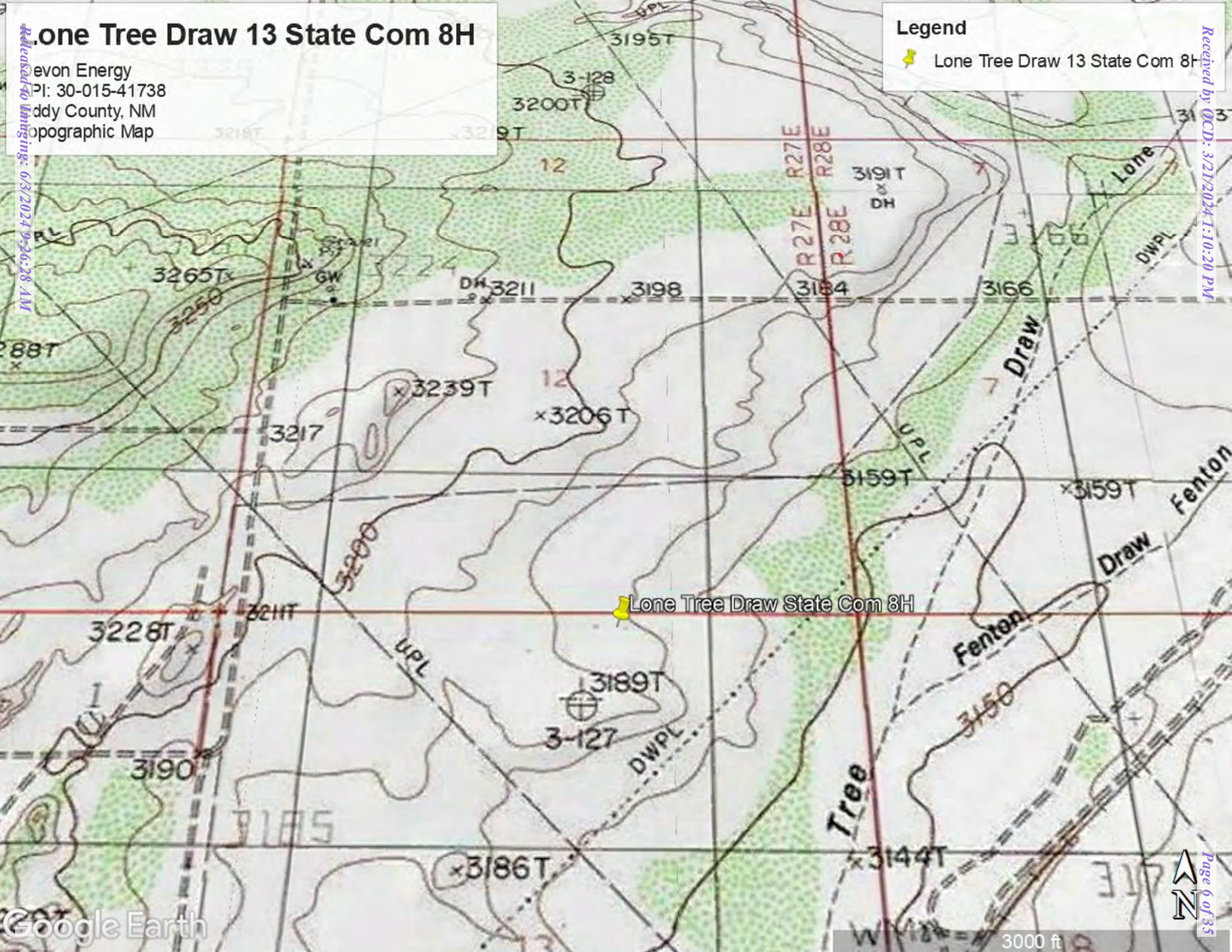


Google Earth



evon Energy  
PI: 30-015-41738  
ddy County, NM  
opographic Map

 Lone Tree Draw 13 State Com 8H



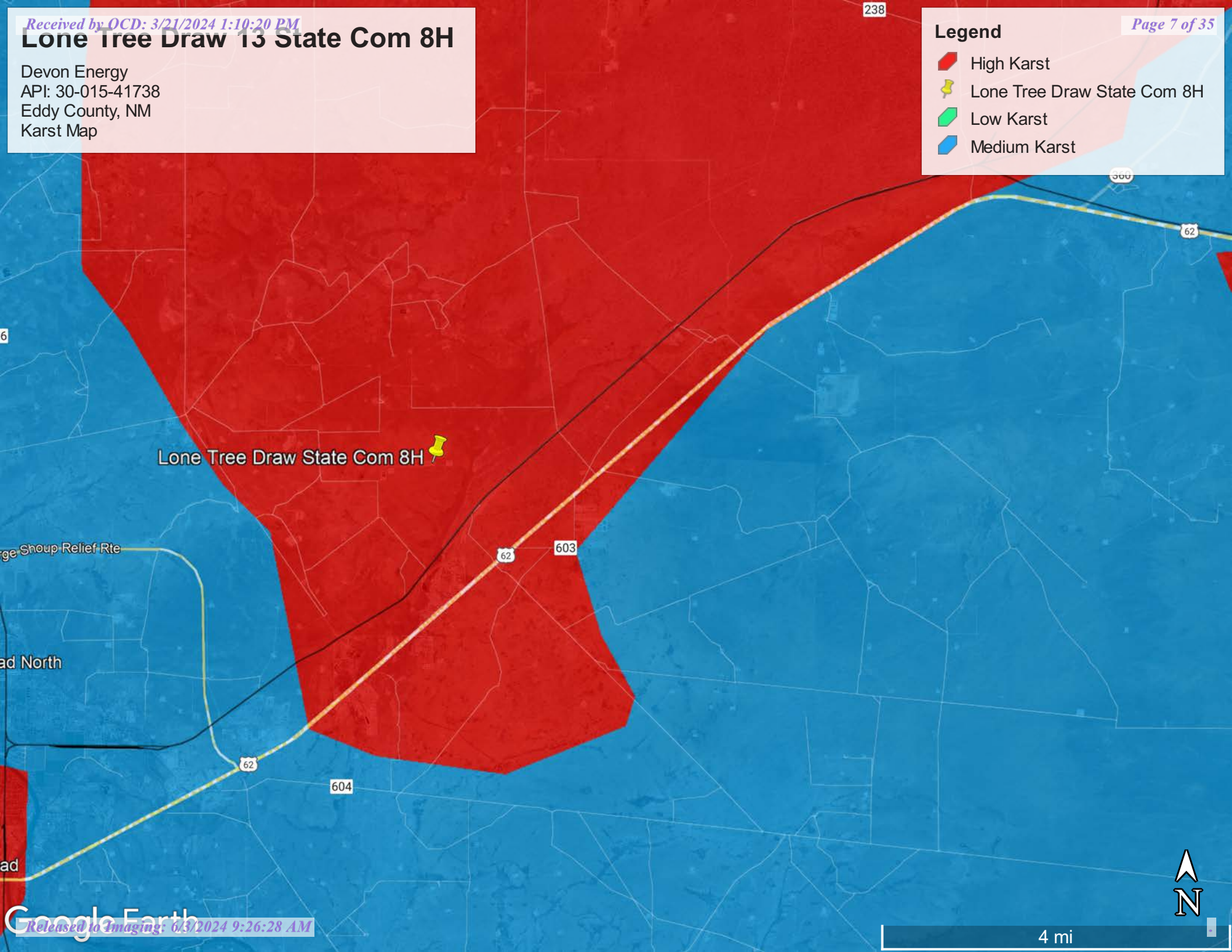


# Lone Tree Draw 13 State Com 8H

Devon Energy  
API: 30-015-41738  
Eddy County, NM  
Karst Map

## Legend

- High Karst
- Lone Tree Draw State Com 8H
- Low Karst
- Medium Karst








# Lone tree Draw 13 State Com 8H

Devon Energy  
API: 30-015-41738  
Eddy County, NM  
Site Map

## Legend

-  Lone tree draw 13 st com 8
-  Spill Area

 Lone tree draw 13 st com 8



200 ft

Google Earth





Pima Environmental Services

## **Appendix A**

Water Surveys:

OSE

USGS

Surface Water Map

Wetlands Map

Soil

FEMA





# New Mexico Office of the State Engineer

## Water Column/Average Depth to Water

(A CLW##### in the POD suffix indicates the POD has been replaced & no longer serves a water right file.)

(R=POD has been replaced,  
O=orphaned,  
C=the file is closed)

(quarters are 1=NW 2=NE 3=SW 4=SE)

(quarters are smallest to largest) (NAD83 UTM in meters)

(In feet)

POD Number	Code	POD Sub-basin	County	Q 64	Q 16	Q 4	Sec	Tws	Rng	X	Y	Distance	DepthWell	DepthWater	Water Column
<a href="#">C_00473</a>	C	CUB	ED	3	2	14	21S	27E		579087	3594177*	1052	562		
<a href="#">C_00465</a>	C	CUB	ED	3	2	1	14	21S	27E	578576	3594475*	1416			
<a href="#">C_03272 POD1</a>		CUB	ED	4	3	1	18	21S	28E	581632	3594114*	1789	22	9	13
<a href="#">C_03864 POD1</a>		CUB	ED	2	4	4	13	21S	27E	581218	3593472	1797	160	45	115
<a href="#">C_00466</a>	C	CUB	ED	3	3	1	14	21S	27E	578173	3594066*	1919	538		
<a href="#">C_03607 POD1</a>		CUB	ED	2	2	2	24	21S	27E	581145	3593139	2005	275	10	265
<a href="#">C_00469</a>	C	CUB	ED	1	4	02	21S	27E		579078	3596994*	2403	767		
<a href="#">C_03268 POD1</a>		CUB	ED	4	2	4	01	21S	27E	581201	3596915	2485	48	13	35
<a href="#">C_03690 POD1</a>		C	ED	4	1	4	10	21S	27E	577482	3595179	2516	200		
<a href="#">C_00370</a>	C	CUB	ED	4	4	15	21S	27E		577874	3593350*	2520			
<a href="#">C_02992</a>		C	ED	3	3	2	01	21S	27E	580594	3597311*	2628	250	186	64
<a href="#">C_00314</a>		C	ED	1	4	24	21S	27E		580742	3592180*	2694	397		
<a href="#">C_03350</a>		C	ED	1	4	2	01	21S	27E	580896	3597476	2872	76	8	68

Average Depth to Water: **45 feet**

Minimum Depth: **8 feet**

Maximum Depth: **186 feet**

**Record Count:** 13

**UTM NAD83 Radius Search (in meters):**

**Easting (X):** 579963.19

**Northing (Y):** 3594759.65

**Radius:** 3000

\*UTM location was derived from PLSS - see Help

The data is furnished by the NMOSE/ISC and is accepted by the recipient with the expressed understanding that the OSE/ISC make no warranties, expressed or implied, concerning the accuracy, completeness, reliability, usability, or suitability for any particular purpose of the data.

1/23/23 2:04 PM


WATER COLUMN/ AVERAGE DEPTH TO WATER





# New Mexico Office of the State Engineer

## Point of Diversion Summary

		(quarters are 1=NW 2=NE 3=SW 4=SE) (quarters are smallest to largest)						(NAD83 UTM in meters)	
Well Tag	POD Number	Q64	Q16	Q4	Sec	Tws	Rng	X	Y
	C 03272 POD1	4	3	1	18	21S	28E	581632	3594114* 
<hr/>									
<b>Driller License:</b> 122		<b>Driller Company:</b> UNKNOWN							
<b>Driller Name:</b> UNKNOWN									
<b>Drill Start Date:</b>		<b>Drill Finish Date:</b> 12/31/1951				<b>Plug Date:</b>			
<b>Log File Date:</b>		<b>PCW Rcv Date:</b>				<b>Source:</b>			
<b>Pump Type:</b>		<b>Pipe Discharge Size:</b>				<b>Estimated Yield:</b>			
<b>Casing Size:</b>		<b>Depth Well:</b> 22 feet				<b>Depth Water:</b> 9 feet			

\*UTM location was derived from PLSS - see Help




The data is furnished by the NMOSE/ISC and is accepted by the recipient with the expressed understanding that the OSE/ISC make no warranties, expressed or implied, concerning the accuracy, completeness, reliability, usability, or suitability for any particular purpose of the data.

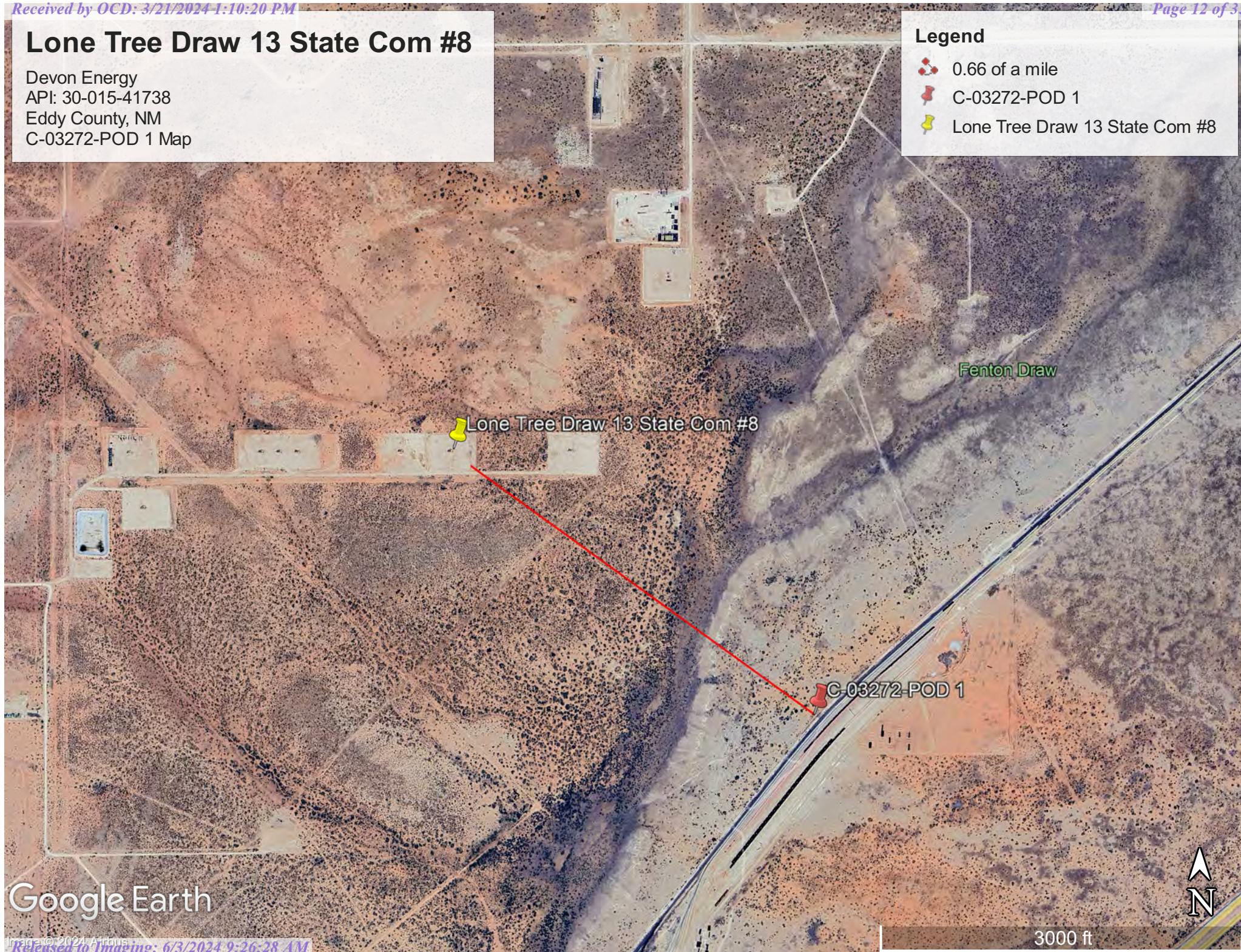


# Lone Tree Draw 13 State Com #8

Devon Energy  
API: 30-015-41738  
Eddy County, NM  
C-03272-POD 1 Map

## Legend

-  0.66 of a mile
-  C-03272-POD 1
-  Lone Tree Draw 13 State Com #8



Google Earth





[USGS Home](#)  
[Contact USGS](#)  
[Search USGS](#)

## National Water Information System: Web Interface

USGS Water Resources

Data Category:


Groundwater

Geographic Area:

United States

GO

Click to hide News Bulletins

- Explore the *NEW* [USGS National Water Dashboard](#) interactive map to access real-time water data from over 13,500 stations nationwide.
- [Full News](#) 

Groundwater levels for the Nation



Important: [Next Generation Monitoring Location Page](#)

## Search Results -- 1 sites found

site\_no list =

- 322851104070401

Minimum number of levels = 1

[Save file of selected sites](#) to local disk for future upload

## USGS 322851104070401 21S.28E.18.13333

Available data for this site

Groundwater: Field measurements

GO

Eddy County, New Mexico

Hydrologic Unit Code 13060011

Latitude 32°28'51", Longitude 104°07'04" NAD27

Land-surface elevation 3,189 feet above NAVD88

The depth of the well is 25 feet below land surface.

This well is completed in the Other aquifers (N9999OTHER) national aquifer.

This well is completed in the Alluvium, Bolson Deposits and Other Surface Deposits (110AVMB) local aquifer.

### Output formats

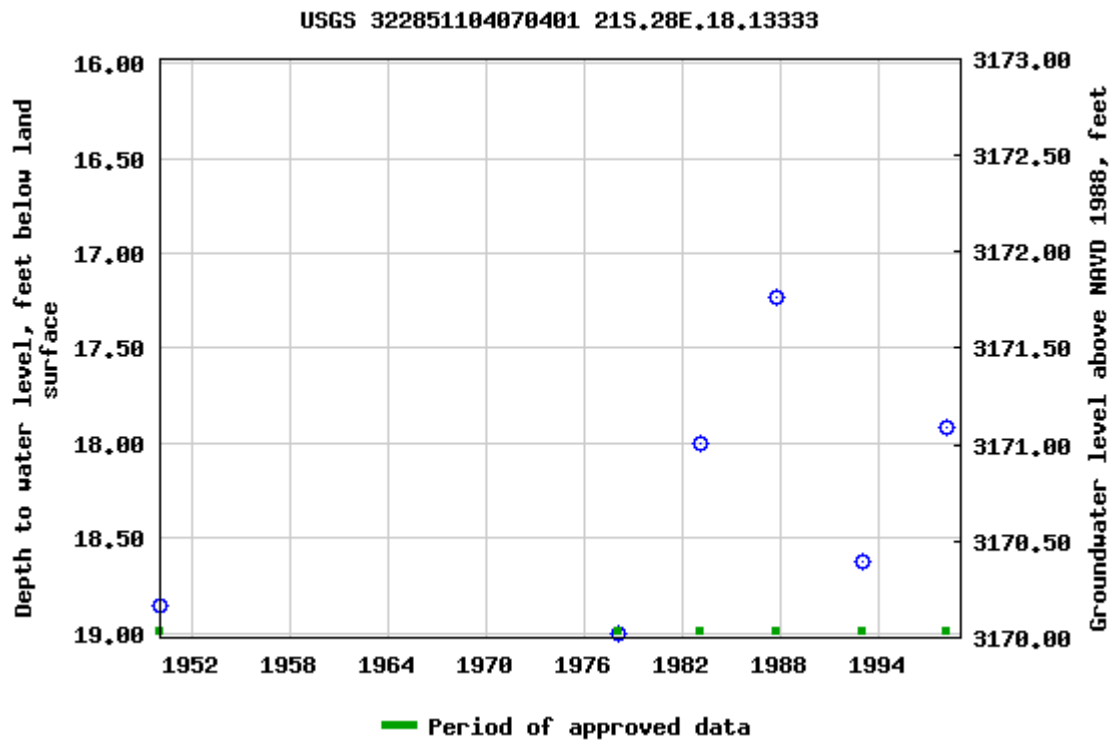
[Table of data](#)

[Tab-separated data](#)

[Graph of data](#)

[Reselect period](#)





Breaks in the plot represent a gap of at least one year between field measurements.

[Download a presentation-quality graph](#)

[Questions about sites/data?](#)

[Feedback on this web site](#)

[Automated retrievals](#)

[Help](#)

[Data Tips](#)

[Explanation of terms](#)

[Subscribe for system changes](#)

[News](#)

[Accessibility](#)

[FOIA](#)

[Privacy](#)

[Policies and Notices](#)

[U.S. Department of the Interior](#) | [U.S. Geological Survey](#)

**Title: Groundwater for USA: Water Levels**

**URL: <https://nwis.waterdata.usgs.gov/nwis/gwlevels?>**

Page Contact Information: [USGS Water Data Support Team](#)

Page Last Modified: 2023-01-23 16:00:25 EST

0.69 0.57 nadww01



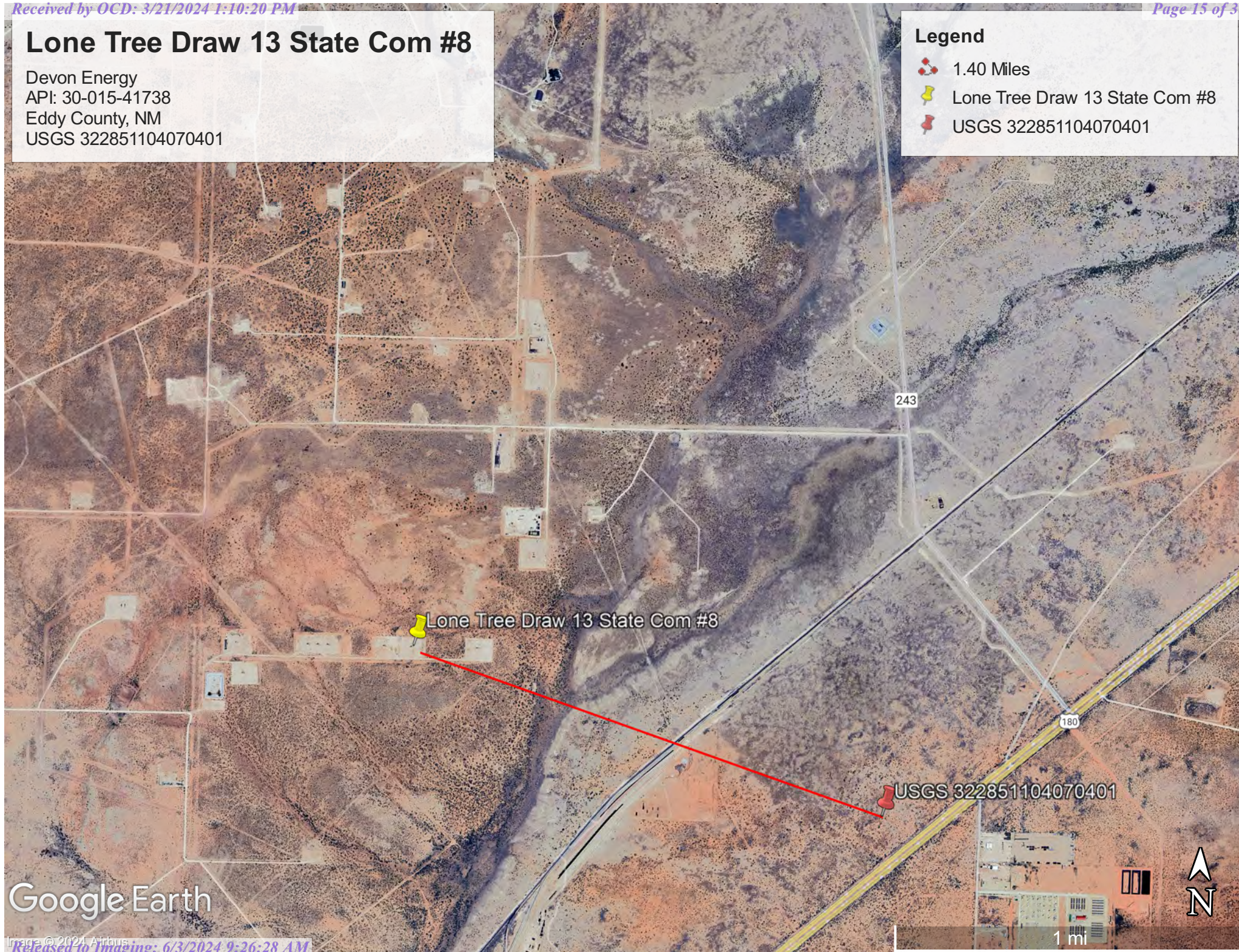


# Lone Tree Draw 13 State Com #8

Devon Energy  
API: 30-015-41738  
Eddy County, NM  
USGS 322851104070401

## Legend

- 1.40 Miles
- Lone Tree Draw 13 State Com #8
- USGS 322851104070401



Google Earth

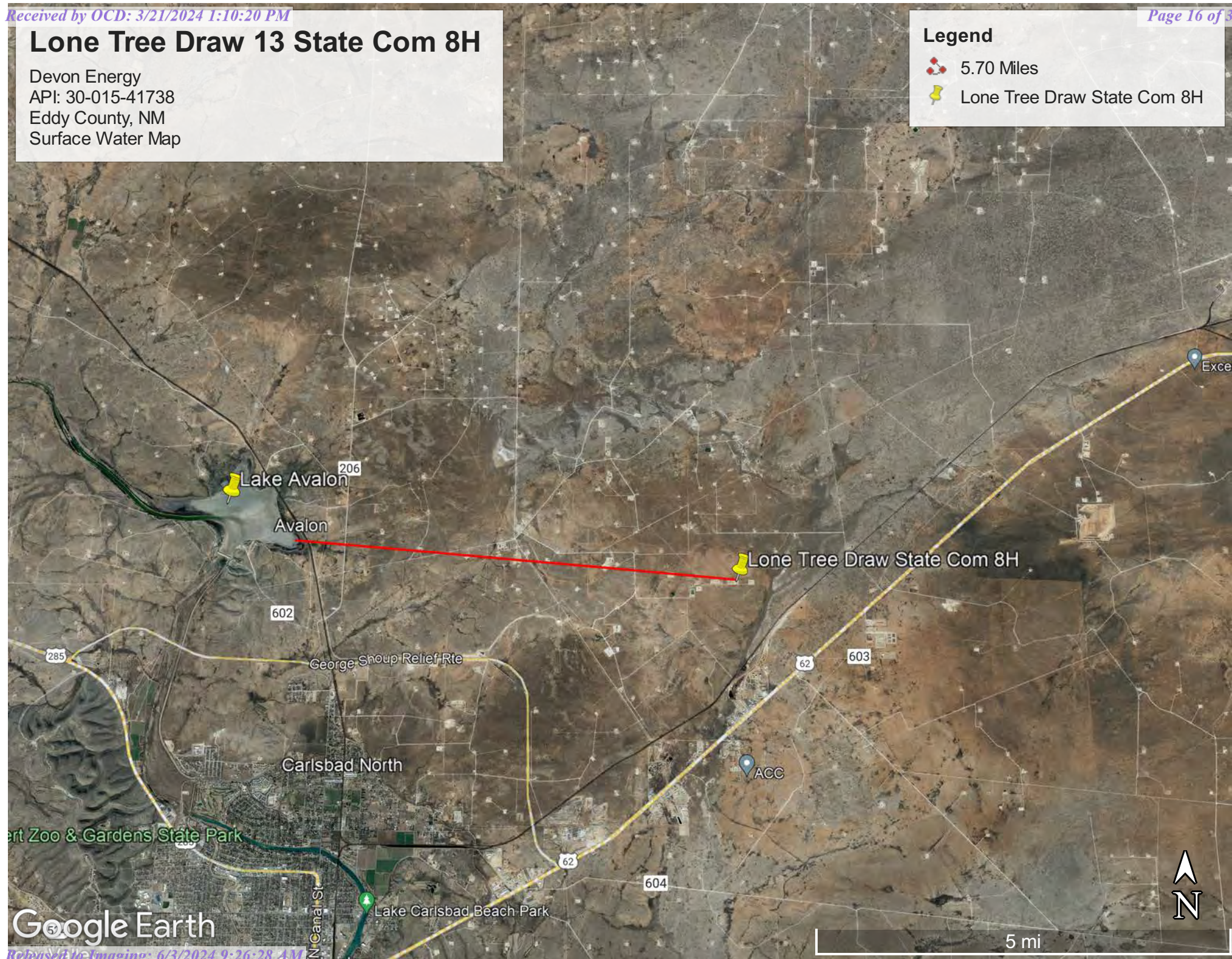


# Lone Tree Draw 13 State Com 8H

Devon Energy  
API: 30-015-41738  
Eddy County, NM  
Surface Water Map

## Legend

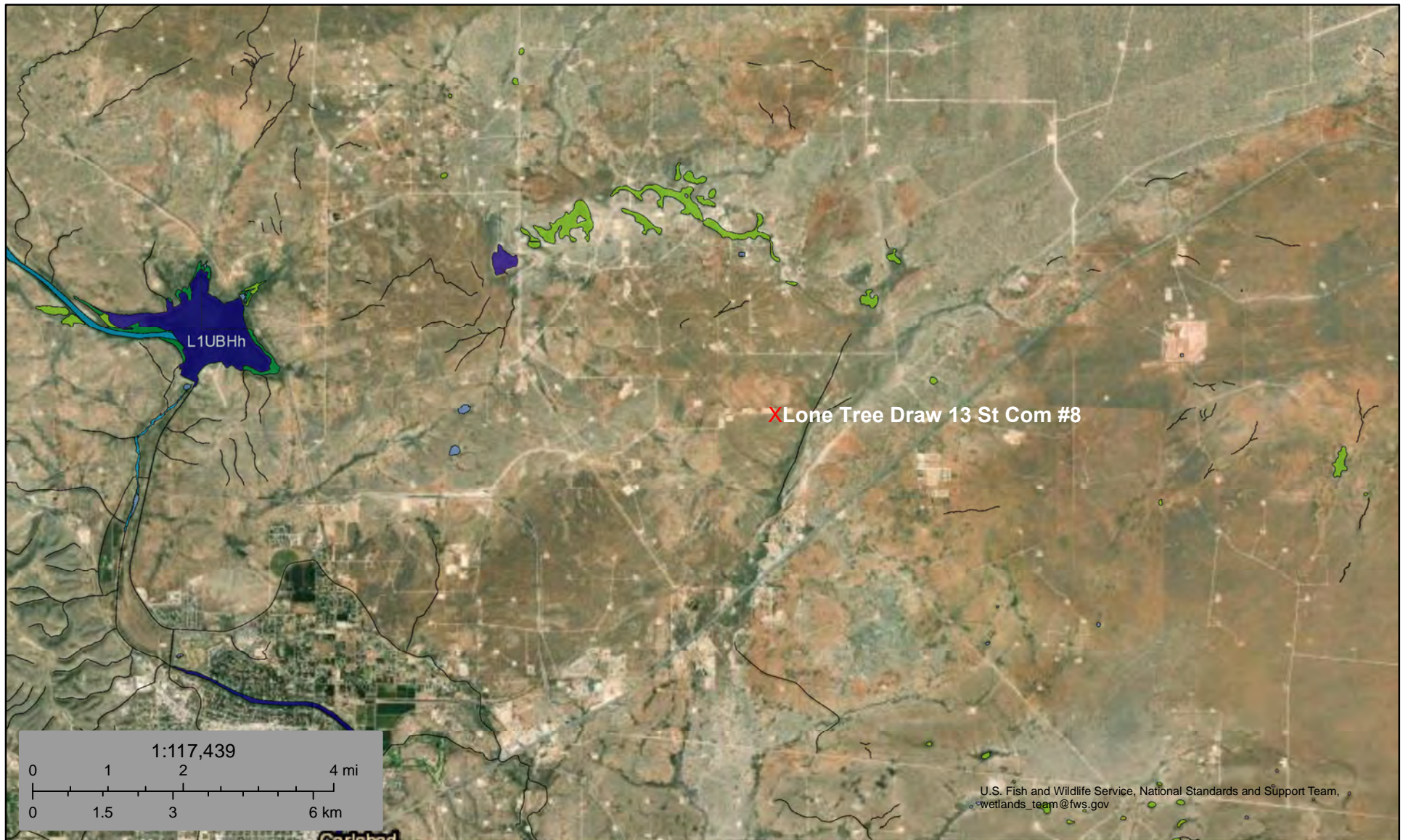
- 5.70 Miles
- Lone Tree Draw State Com 8H







## Wetlands Map



January 23, 2023

**Wetlands**

- Estuarine and Marine Deepwater
- Estuarine and Marine Wetland

- Freshwater Emergent Wetland
- Freshwater Forested/Shrub Wetland
- Freshwater Pond

- Lake
- Other
- Riverine

This map is for general reference only. The US Fish and Wildlife Service is not responsible for the accuracy or currentness of the base data shown on this map. All wetlands related data should be used in accordance with the layer metadata found on the Wetlands Mapper web site.



Map Unit Description: Gypsum land-Reeves complex, 0 to 3 percent slopes, eroded---Eddy Area, New Mexico

---

## Eddy Area, New Mexico

### GR—Gypsum land-Reeves complex, 0 to 3 percent slopes, eroded

#### Map Unit Setting

*National map unit symbol:* 1w4h

*Elevation:* 3,000 to 5,000 feet

*Mean annual precipitation:* 10 to 14 inches

*Mean annual air temperature:* 60 to 64 degrees F

*Frost-free period:* 190 to 220 days

*Farmland classification:* Not prime farmland

#### Map Unit Composition

*Gypsum land:* 55 percent

*Reeves and similar soils:* 35 percent

*Minor components:* 10 percent

*Estimates are based on observations, descriptions, and transects of the mapunit.*

#### Description of Gypsum Land

##### Setting

*Landform:* Ridges, plains, hills

*Landform position (two-dimensional):* Shoulder, backslope, footslope, toeslope

*Landform position (three-dimensional):* Side slope, head slope, nose slope, crest

*Down-slope shape:* Convex

*Across-slope shape:* Linear

*Parent material:* Residuum weathered from gypsum

##### Interpretive groups

*Land capability classification (irrigated):* None specified

*Land capability classification (nonirrigated):* 8s

*Hydric soil rating:* No

#### Description of Reeves

##### Setting

*Landform:* Ridges, plains, hills

*Landform position (two-dimensional):* Shoulder, backslope, footslope, toeslope

*Landform position (three-dimensional):* Side slope, head slope, nose slope, crest

*Down-slope shape:* Convex

*Across-slope shape:* Linear

*Parent material:* Residuum weathered from gypsum

##### Typical profile

*H1 - 0 to 8 inches:* sandy loam

*H2 - 8 to 32 inches:* clay loam

Map Unit Description: Gypsum land-Reeves complex, 0 to 3 percent slopes, eroded---Eddy Area, New Mexico

---

*H3 - 32 to 60 inches: gypsiferous material*

**Properties and qualities**

*Slope: 0 to 1 percent*

*Depth to restrictive feature: More than 80 inches*

*Drainage class: Well drained*

*Runoff class: High*

*Capacity of the most limiting layer to transmit water (Ksat): Very low to moderately low (0.00 to 0.06 in/hr)*

*Depth to water table: More than 80 inches*

*Frequency of flooding: None*

*Frequency of ponding: None*

*Calcium carbonate, maximum content: 25 percent*

*Gypsum, maximum content: 80 percent*

*Maximum salinity: Very slightly saline to moderately saline (2.0 to 8.0 mmhos/cm)*

*Sodium adsorption ratio, maximum: 4.0*

*Available water supply, 0 to 60 inches: Low (about 4.3 inches)*

**Interpretive groups**

*Land capability classification (irrigated): 3s*

*Land capability classification (nonirrigated): 7s*

*Hydrologic Soil Group: B*

*Ecological site: R070BC007NM - Loamy*

*Hydric soil rating: No*

**Minor Components**

**Unnamed soils**

*Percent of map unit: 10 percent*

*Hydric soil rating: No*

**Data Source Information**

Soil Survey Area: Eddy Area, New Mexico

Survey Area Data: Version 18, Sep 8, 2022



# National Flood Hazard Layer FIRMette



104°8'46"W 32°29'29"N



## Legend

SEE FIS REPORT FOR DETAILED LEGEND AND INDEX MAP FOR FIRM PANEL LAYOUT

SPECIAL FLOOD HAZARD AREAS		Without Base Flood Elevation (BFE) Zone A, V, A99
		With BFE or Depth Zone AE, AO, AH, VE, AR
		Regulatory Floodway
OTHER AREAS OF FLOOD HAZARD		0.2% Annual Chance Flood Hazard, Areas of 1% annual chance flood with average depth less than one foot or with drainage areas of less than one square mile Zone X
		Future Conditions 1% Annual Chance Flood Hazard Zone X
		Area with Reduced Flood Risk due to Levee. See Notes. Zone X
		Area with Flood Risk due to Levee Zone D
OTHER AREAS		NO SCREEN Area of Minimal Flood Hazard Zone X
		Effective LOMRs
		Area of Undetermined Flood Hazard Zone D
GENERAL STRUCTURES		Channel, Culvert, or Storm Sewer
		Levee, Dike, or Floodwall
OTHER FEATURES		20.2 Cross Sections with 1% Annual Chance Water Surface Elevation
		17.5 Coastal Transect
		Base Flood Elevation Line (BFE)
		Limit of Study
		Jurisdiction Boundary
		Coastal Transect Baseline
		Profile Baseline
MAP PANELS		Digital Data Available
		No Digital Data Available
		Unmapped



The pin displayed on the map is an approximate point selected by the user and does not represent an authoritative property location.

This map complies with FEMA's standards for the use of digital flood maps if it is not void as described below. The basemap shown complies with FEMA's basemap accuracy standards

The flood hazard information is derived directly from the authoritative NFHL web services provided by FEMA. This map was exported on 1/23/2023 at 4:50 PM and does not reflect changes or amendments subsequent to this date and time. The NFHL and effective information may change or become superseded by new data over time.

This map image is void if the one or more of the following map elements do not appear: basemap imagery, flood zone labels, legend, scale bar, map creation date, community identifiers, FIRM panel number, and FIRM effective date. Map images for unmapped and unmodernized areas cannot be used for regulatory purposes.



Pima Environmental Services

## **Appendix B**

### 48-Hour Notification



**lynsey@pimaoil.com**

---

**From:** Woodall, Dale <Dale.Woodall@dvn.com>  
**Sent:** Monday, March 11, 2024 1:24 PM  
**To:** 'Gio PimaOil'; Lynsey Pima Oil  
**Subject:** FW: [EXTERNAL] The Oil Conservation Division (OCD) has accepted the application, Application ID: 322209

Dale Woodall  
**Environmental Professional**  
**Hobbs, NM**  
**Office:** 575-748-1838  
**Mobile:** 405-318-4697  
[Dale.Woodall@dvn.com](mailto:Dale.Woodall@dvn.com)

---

**From:** OCDOnline@state.nm.us <OCDOnline@state.nm.us>  
**Sent:** Monday, March 11, 2024 1:24 PM  
**To:** Woodall, Dale <Dale.Woodall@dvn.com>  
**Subject:** [EXTERNAL] The Oil Conservation Division (OCD) has accepted the application, Application ID: 322209

To whom it may concern (c/o Dale Woodall for DEVON ENERGY PRODUCTION COMPANY, LP),

The OCD has received the submitted *Notification for Liner Inspection for a Release* (C-141L), for incident ID (n#) nAB1801735905.

The liner inspection is expected to take place:

**When:** 03/14/2024 @ 09:30

**Where:** B-13-21S-27E 150 FNL 1980 FEL (32.4872093,-104.140892)

**Additional Information:** Andrew Franco 806-200-0054

**Additional Instructions:** B-13-21S-27E, (32.4872093,-104.140892 NAD83) From the intersection of George Shoupe Relief Rte and N Loop Rd, travel North on N Loop Rd, for 0.72 of a mile, turn Northeast on County Rd 206 for 0.63 of a mile, turn East on lease rd (Rains Rd) for 2.31 of a mile, turn southeast on lease 1.46 miles, turn South on lease Rd for 1.35 miles, arriving at location on the left.

An OCD representative may be available onsite at the date and time reported. In the absence or presence of an OCD representative, liner inspection pursuant to 19.15.29.11.A(5)(a) NMAC is required. Should there be a change in the scheduled date and time of the sampling event, then another notification should be resubmitted through OCD permitting as soon as possible.

- **Failure to notify the OCD of liner inspections including any changes in date/time per the requirements of 19.15.29.11.A(5)(a)(ii) NMAC, may result in the inspection not being accepted.**

If you have any questions regarding this application, or don't know why you have received this email, please contact us.

**New Mexico Energy, Minerals and Natural Resources Department**  
1220 South St. Francis Drive  
Santa Fe, NM 87505

Confidentiality Warning: This message and any attachments are intended only for the use of the intended recipient(s), are confidential, and may be privileged. If you are not the intended recipient, you are hereby notified that any review, retransmission, conversion to hard copy, copying, circulation or other use of all or any portion of this message and any attachments is strictly prohibited. If you are not the intended recipient, please notify the sender immediately by return e-mail, and delete this message and any attachments from your system.





Pima Environmental Services

## **Appendix C**

Liner Inspection Form

Photographic Documentation



Pima Environmental Services, LLC

**Liner Inspection Form**Company Name: Devon EnergySite: Lone Tree Draw 13 St Com 8HLat/Long: 32.4872093, -104.140892NMOCD Incident ID  
& Incident Date: NAB1801735905 10/24/20172-Day Notification  
Sent: via Email by Dale Woodall on OCD portal 3/11/2024Inspection Date: 1/14/2024

Liner Type:      Earthen w/liner                      Earthen no liner                      Polystar

**Steel w/poly liner**                      Steel w/spray epoxy                      No Liner

Other: \_\_\_\_\_

Visualization	Yes	No	Comments
Is there a tear in the liner?		X	
Are there holes in the liner?		X	
Is the liner retaining any fluids?	X		Fluid from the power washing of the liner
Does the liner have integrity to contain a leak?	X		

Comments: \_\_\_\_\_

Inspector Name: Andrew Franco      Inspector Signature: Andrew Franco





## SITE PHOTOGRAPHS

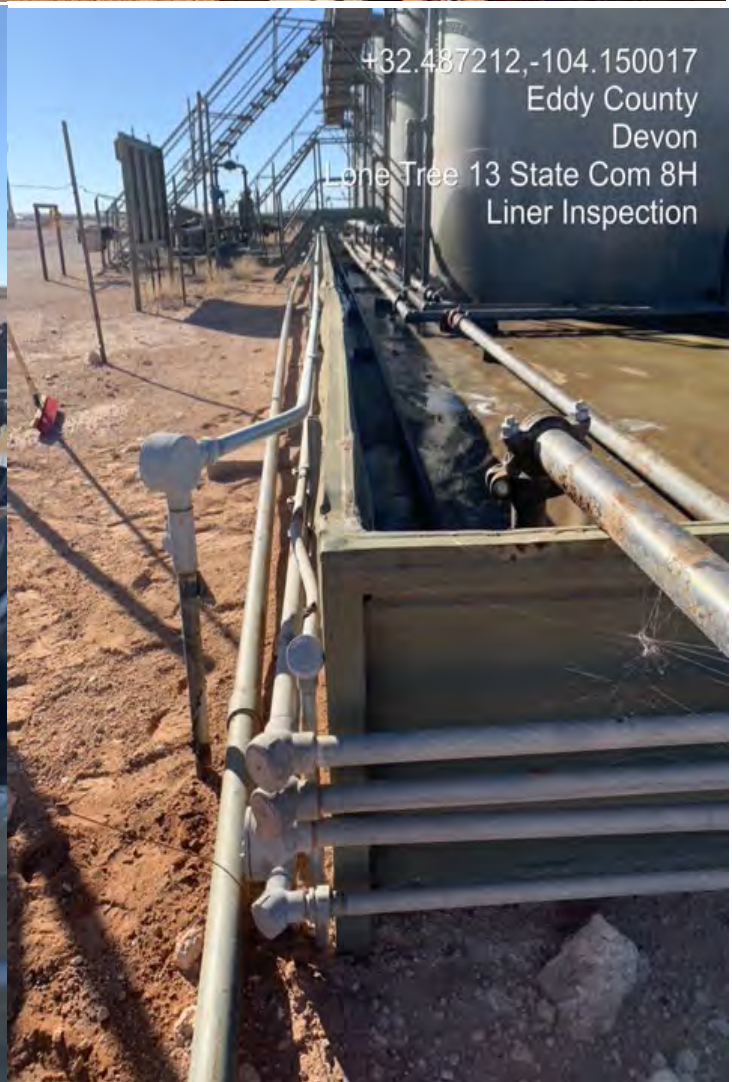
Devon Energy

Lone Tree Draw 13 State Com #8

### Liner Inspection

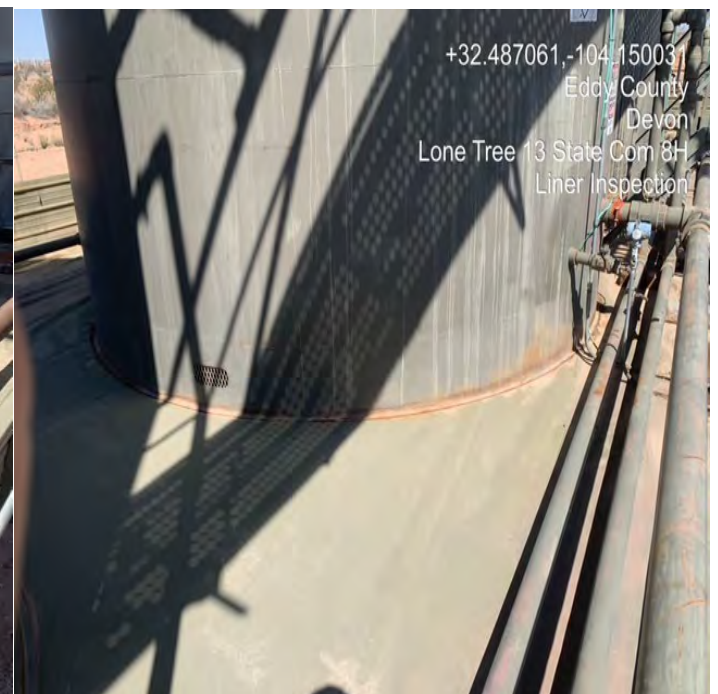














**District I**  
1625 N. French Dr., Hobbs, NM 88240  
Phone:(575) 393-6161 Fax:(575) 393-0720  
**District II**  
811 S. First St., Artesia, NM 88210  
Phone:(575) 748-1283 Fax:(575) 748-9720  
**District III**  
1000 Rio Brazos Rd., Aztec, NM 87410  
Phone:(505) 334-6178 Fax:(505) 334-6170  
**District IV**  
1220 S. St Francis Dr., Santa Fe, NM 87505  
Phone:(505) 476-3470 Fax:(505) 476-3462

**State of New Mexico**  
**Energy, Minerals and Natural Resources**  
**Oil Conservation Division**  
**1220 S. St Francis Dr.**  
**Santa Fe, NM 87505**

QUESTIONS  
  
Action 325599

QUESTIONS

Operator: DEVON ENERGY PRODUCTION COMPANY, LP 333 West Sheridan Ave. Oklahoma City, OK 73102	OGRID:	6137
	Action Number:	325599
	Action Type:	[C-141] Remediation Closure Request C-141 (C-141-v-Closure)

QUESTIONS

Prerequisites	
Incident ID (n#)	nAB1801735905
Incident Name	NAB1801735905 LONE TREE DRAW 13 STATE COM #008H @ 30-015-41738
Incident Type	Produced Water Release
Incident Status	Remediation Closure Report Received
Incident Well	[30-015-41738] LONE TREE DRAW 13 STATE COM #008H

Location of Release Source	
Please answer all the questions in this group.	
Site Name	LONE TREE DRAW 13 STATE COM #008H
Date Release Discovered	10/24/2017
Surface Owner	Private

Incident Details	
Please answer all the questions in this group.	
Incident Type	Produced Water Release
Did this release result in a fire or is the result of a fire	No
Did this release result in any injuries	No
Has this release reached or does it have a reasonable probability of reaching a watercourse	No
Has this release endangered or does it have a reasonable probability of endangering public health	No
Has this release substantially damaged or will it substantially damage property or the environment	No
Is this release of a volume that is or may with reasonable probability be detrimental to fresh water	No

Nature and Volume of Release	
Material(s) released, please answer all that apply below. Any calculations or specific justifications for the volumes provided should be attached to the follow-up C-141 submission.	
Crude Oil Released (bbls) Details	Not answered.
Produced Water Released (bbls) Details	Cause: Equipment Failure   Tank (Any)   Produced Water   Released: 20 BBL   Recovered: 20 BBL   Lost: 0 BBL.
Is the concentration of chloride in the produced water >10,000 mg/l	No
Condensate Released (bbls) Details	Not answered.
Natural Gas Vented (Mcf) Details	Not answered.
Natural Gas Flared (Mcf) Details	Not answered.
Other Released Details	Not answered.
Are there additional details for the questions above (i.e. any answer containing Other, Specify, Unknown, and/or Fire, or any negative lost amounts)	Not answered.

**District I**

1625 N. French Dr., Hobbs, NM 88240  
Phone:(575) 393-6161 Fax:(575) 393-0720

**District II**

811 S. First St., Artesia, NM 88210  
Phone:(575) 748-1283 Fax:(575) 748-9720

**District III**

1000 Rio Brazos Rd., Aztec, NM 87410  
Phone:(505) 334-6178 Fax:(505) 334-6170

**District IV**

1220 S. St Francis Dr., Santa Fe, NM 87505  
Phone:(505) 476-3470 Fax:(505) 476-3462

**State of New Mexico**  
**Energy, Minerals and Natural Resources**  
**Oil Conservation Division**  
**1220 S. St Francis Dr.**  
**Santa Fe, NM 87505**

QUESTIONS, Page 2

Action 325599

**QUESTIONS (continued)**

Operator: DEVON ENERGY PRODUCTION COMPANY, LP 333 West Sheridan Ave. Oklahoma City, OK 73102	OGRID:	6137
	Action Number:	325599
	Action Type:	[C-141] Remediation Closure Request C-141 (C-141-v-Closure)

**QUESTIONS**

Nature and Volume of Release (continued)	
Is this a gas only submission (i.e. only significant Mcf values reported)	No, according to supplied volumes this does not appear to be a "gas only" report.
Was this a major release as defined by Subsection A of 19.15.29.7 NMAC	No
Reasons why this would be considered a submission for a notification of a major release	Unavailable.
With the implementation of the 19.15.27 NMAC (05/25/2021), venting and/or flaring of natural gas (i.e. gas only) are to be submitted on the C-129 form.	

**Initial Response**

The responsible party must undertake the following actions immediately unless they could create a safety hazard that would result in injury.

The source of the release has been stopped	True
The impacted area has been secured to protect human health and the environment	True
Released materials have been contained via the use of berms or dikes, absorbent pads, or other containment devices	True
All free liquids and recoverable materials have been removed and managed appropriately	True
If all the actions described above have not been undertaken, explain why	Not answered.

Per Paragraph (4) of Subsection B of 19.15.29.8 NMAC the responsible party may commence remediation immediately after discovery of a release. If remediation has begun, please prepare and attach a narrative of actions to date in the follow-up C-141 submission. If remedial efforts have been successfully completed or if the release occurred within a lined containment area (see Subparagraph (a) of Paragraph (5) of Subsection A of 19.15.29.11 NMAC), please prepare and attach all information needed for closure evaluation in the follow-up C-141 submission.

I hereby certify that the information given above is true and complete to the best of my knowledge and understand that pursuant to OCD rules and regulations all operators are required to report and/or file certain release notifications and perform corrective actions for releases which may endanger public health or the environment. The acceptance of a C-141 report by the OCD does not relieve the operator of liability should their operations have failed to adequately investigate and remediate contamination that pose a threat to groundwater, surface water, human health or the environment. In addition, OCD acceptance of a C-141 report does not relieve the operator of responsibility for compliance with any other federal, state, or local laws and/or regulations.

I hereby agree and sign off to the above statement	Name: Dale Woodall Title: EHS Professional Email: Dale.Woodall@dmv.com Date: 03/21/2024
--	--



**District I**

1625 N. French Dr., Hobbs, NM 88240  
Phone:(575) 393-6161 Fax:(575) 393-0720

**District II**

811 S. First St., Artesia, NM 88210  
Phone:(575) 748-1283 Fax:(575) 748-9720

**District III**

1000 Rio Brazos Rd., Aztec, NM 87410  
Phone:(505) 334-6178 Fax:(505) 334-6170

**District IV**

1220 S. St Francis Dr., Santa Fe, NM 87505  
Phone:(505) 476-3470 Fax:(505) 476-3462

**State of New Mexico**  
**Energy, Minerals and Natural Resources**  
**Oil Conservation Division**  
**1220 S. St Francis Dr.**  
**Santa Fe, NM 87505**

QUESTIONS, Page 3

Action 325599

**QUESTIONS (continued)**

Operator: DEVON ENERGY PRODUCTION COMPANY, LP 333 West Sheridan Ave. Oklahoma City, OK 73102	OGRID: 6137
	Action Number: 325599
	Action Type: [C-141] Remediation Closure Request C-141 (C-141-v-Closure)

**QUESTIONS****Site Characterization**

Please answer all the questions in this group (only required when seeking remediation plan approval and beyond). This information must be provided to the appropriate district office no later than 90 days after the release discovery date.

What is the shallowest depth to groundwater beneath the area affected by the release in feet below ground surface (ft bgs)	Less than or equal 25 (ft.)
What method was used to determine the depth to ground water	NM OSE iWaters Database Search
Did this release impact groundwater or surface water	No
<b>What is the minimum distance, between the closest lateral extents of the release and the following surface areas:</b>	
A continuously flowing watercourse or any other significant watercourse	Greater than 5 (mi.)
Any lakebed, sinkhole, or playa lake (measured from the ordinary high-water mark)	Greater than 5 (mi.)
An occupied permanent residence, school, hospital, institution, or church	Greater than 5 (mi.)
A spring or a private domestic fresh water well used by less than five households for domestic or stock watering purposes	Greater than 5 (mi.)
Any other fresh water well or spring	Greater than 5 (mi.)
Incorporated municipal boundaries or a defined municipal fresh water well field	Greater than 5 (mi.)
A wetland	Between 1 and 5 (mi.)
A subsurface mine	Greater than 5 (mi.)
An (non-karst) unstable area	Zero feet, overlying, or within area
Categorize the risk of this well / site being in a karst geology	High
A 100-year floodplain	Greater than 5 (mi.)
Did the release impact areas not on an exploration, development, production, or storage site	No

**Remediation Plan**

Please answer all the questions that apply or are indicated. This information must be provided to the appropriate district office no later than 90 days after the release discovery date.

Requesting a remediation plan approval with this submission	Yes
Attach a comprehensive report demonstrating the lateral and vertical extents of soil contamination associated with the release have been determined, pursuant to 19.15.29.11 NMAC and 19.15.29.13 NMAC.	
Have the lateral and vertical extents of contamination been fully delineated	Yes
Was this release entirely contained within a lined containment area	Yes
Per Subsection B of 19.15.29.11 NMAC unless the site characterization report includes completed efforts at remediation, the report must include a proposed remediation plan in accordance with 19.15.29.12 NMAC, which includes the anticipated timelines for beginning and completing the remediation.	
On what estimated date will the remediation commence	03/14/2024
On what date will (or did) the final sampling or liner inspection occur	03/14/2024
On what date will (or was) the remediation complete(d)	03/14/2024
What is the estimated surface area (in square feet) that will be remediated	0
What is the estimated volume (in cubic yards) that will be remediated	0
These estimated dates and measurements are recognized to be the best guess or calculation at the time of submission and may (be) change(d) over time as more remediation efforts are completed.	
The OCD recognizes that proposed remediation measures may have to be minimally adjusted in accordance with the physical realities encountered during remediation. If the responsible party has any need to significantly deviate from the remediation plan proposed, then it should consult with the division to determine if another remediation plan submission is required.	

**District I**  
1625 N. French Dr., Hobbs, NM 88240  
Phone:(575) 393-6161 Fax:(575) 393-0720

**District II**  
811 S. First St., Artesia, NM 88210  
Phone:(575) 748-1283 Fax:(575) 748-9720

**District III**  
1000 Rio Brazos Rd., Aztec, NM 87410  
Phone:(505) 334-6178 Fax:(505) 334-6170

**District IV**  
1220 S. St Francis Dr., Santa Fe, NM 87505  
Phone:(505) 476-3470 Fax:(505) 476-3462

**State of New Mexico**  
**Energy, Minerals and Natural Resources**  
**Oil Conservation Division**  
**1220 S. St Francis Dr.**  
**Santa Fe, NM 87505**

QUESTIONS, Page 4

Action 325599

QUESTIONS (continued)

Operator: DEVON ENERGY PRODUCTION COMPANY, LP 333 West Sheridan Ave. Oklahoma City, OK 73102	OGRID: 6137
	Action Number: 325599
	Action Type: [C-141] Remediation Closure Request C-141 (C-141-v-Closure)

QUESTIONS

<b>Remediation Plan (continued)</b>	
<i>Please answer all the questions that apply or are indicated. This information must be provided to the appropriate district office no later than 90 days after the release discovery date.</i>	
<b>This remediation will (or is expected to) utilize the following processes to remediate / reduce contaminants:</b>	
<i>(Select all answers below that apply.)</i>	
Is (or was) there affected material present needing to be removed	Yes
Is (or was) there a power wash of the lined containment area (to be) performed	Yes
OTHER (Non-listed remedial process)	No
<i>Per Subsection B of 19.15.29.11 NMAC unless the site characterization report includes completed efforts at remediation, the report must include a proposed remediation plan in accordance with 19.15.29.12 NMAC, which includes the anticipated timelines for beginning and completing the remediation.</i>	
I hereby certify that the information given above is true and complete to the best of my knowledge and understand that pursuant to OCD rules and regulations all operators are required to report and/or file certain release notifications and perform corrective actions for releases which may endanger public health or the environment. The acceptance of a C-141 report by the OCD does not relieve the operator of liability should their operations have failed to adequately investigate and remediate contamination that pose a threat to groundwater, surface water, human health or the environment. In addition, OCD acceptance of a C-141 report does not relieve the operator of responsibility for compliance with any other federal, state, or local laws and/or regulations.	
I hereby agree and sign off to the above statement	Name: Dale Woodall Title: EHS Professional Email: Dale.Woodall@dvn.com Date: 03/21/2024
<i>The OCD recognizes that proposed remediation measures may have to be minimally adjusted in accordance with the physical realities encountered during remediation. If the responsible party has any need to significantly deviate from the remediation plan proposed, then it should consult with the division to determine if another remediation plan submission is required.</i>	



**District I**

1625 N. French Dr., Hobbs, NM 88240  
Phone:(575) 393-6161 Fax:(575) 393-0720

**District II**

811 S. First St., Artesia, NM 88210  
Phone:(575) 748-1283 Fax:(575) 748-9720

**District III**

1000 Rio Brazos Rd., Aztec, NM 87410  
Phone:(505) 334-6178 Fax:(505) 334-6170

**District IV**

1220 S. St Francis Dr., Santa Fe, NM 87505  
Phone:(505) 476-3470 Fax:(505) 476-3462

**State of New Mexico**  
**Energy, Minerals and Natural Resources**  
**Oil Conservation Division**  
**1220 S. St Francis Dr.**  
**Santa Fe, NM 87505**

QUESTIONS, Page 6

Action 325599

**QUESTIONS (continued)**

Operator: DEVON ENERGY PRODUCTION COMPANY, LP 333 West Sheridan Ave. Oklahoma City, OK 73102	OGRID:	6137
	Action Number:	325599
	Action Type:	[C-141] Remediation Closure Request C-141 (C-141-v-Closure)

**QUESTIONS**

<b>Liner Inspection Information</b>	
Last liner inspection notification (C-141L) recorded	322209
Liner inspection date pursuant to Subparagraph (a) of Paragraph (5) of Subsection A of 19.15.29.11 NMAC	03/14/2024
Was all the impacted materials removed from the liner	Yes
What was the liner inspection surface area in square feet	4400

**Remediation Closure Request**

*Only answer the questions in this group if seeking remediation closure for this release because all remediation steps have been completed.*

Requesting a remediation closure approval with this submission	Yes
Have the lateral and vertical extents of contamination been fully delineated	Yes
Was this release entirely contained within a lined containment area	Yes
What was the total surface area (in square feet) remediated	0
What was the total volume (cubic yards) remediated	0
Summarize any additional remediation activities not included by answers (above)	inspected for any pinholes or punctures or any evidence that the spilled fluids left containment

*The responsible party must attach information demonstrating they have complied with all applicable closure requirements and any conditions or directives of the OCD. This demonstration should be in the form of a comprehensive report (in .pdf format) including a scaled site map, sampling diagrams, relevant field notes, photographs of any excavation prior to backfilling, laboratory data including chain of custody documents of final sampling, and a narrative of the remedial activities. Refer to 19.15.29.12 NMAC.*

I hereby certify that the information given above is true and complete to the best of my knowledge and understand that pursuant to OCD rules and regulations all operators are required to report and/or file certain release notifications and perform corrective actions for releases which may endanger public health or the environment. The acceptance of a C-141 report by the OCD does not relieve the operator of liability should their operations have failed to adequately investigate and remediate contamination that pose a threat to groundwater, surface water, human health or the environment. In addition, OCD acceptance of a C-141 report does not relieve the operator of responsibility for compliance with any other federal, state, or local laws and/or regulations. The responsible party acknowledges they must substantially restore, reclaim, and re-vegetate the impacted surface area to the conditions that existed prior to the release or their final land use in accordance with 19.15.29.13 NMAC including notification to the OCD when reclamation and re-vegetation are complete.

I hereby agree and sign off to the above statement	Name: Dale Woodall Title: EHS Professional Email: Dale.Woodall@dmn.com Date: 03/21/2024
--	--

**District I**  
1625 N. French Dr., Hobbs, NM 88240  
Phone:(575) 393-6161 Fax:(575) 393-0720  
**District II**  
811 S. First St., Artesia, NM 88210  
Phone:(575) 748-1283 Fax:(575) 748-9720  
**District III**  
1000 Rio Brazos Rd., Aztec, NM 87410  
Phone:(505) 334-6178 Fax:(505) 334-6170  
**District IV**  
1220 S. St Francis Dr., Santa Fe, NM 87505  
Phone:(505) 476-3470 Fax:(505) 476-3462

**State of New Mexico**  
**Energy, Minerals and Natural Resources**  
**Oil Conservation Division**  
**1220 S. St Francis Dr.**  
**Santa Fe, NM 87505**

CONDITIONS  
  
Action 325599

CONDITIONS

Operator: DEVON ENERGY PRODUCTION COMPANY, LP 333 West Sheridan Ave. Oklahoma City, OK 73102	OGRID: 6137
	Action Number: 325599
	Action Type: [C-141] Remediation Closure Request C-141 (C-141-v-Closure)

CONDITIONS

Created By	Condition	Condition Date
bhall	None	6/3/2024