

CHINCOTEAGUE 8 CTB 1

OCD INCIDENT nAPP2411666919

4/25/2024

Spills In Lined Containment	
Measurements Of Standing Fluid	
Length(Ft)	80
Width(Ft)	40
Depth(in.)	0.25
Total Capacity without tank displacements (bbls)	11.87
No. of 500 bbl Tanks In Standing Fluid	8
No. of Other Tanks In Standing Fluid	
OD Of Other Tanks In Standing Fluid(feet)	
Total Volume of standing fluid accounting for tank displacement.	6.28



**Pima Environmental Services**  
**5614 N. Lovington Highway**  
**Hobbs, NM 88240**  
**575-964-7740**

May 20, 2024

NMOCD District 2  
811 S. First St  
Artesia, NM, 88210

Bureau of Land Management  
620 E Green St.  
Carlsbad, NM 88220

**RE: Liner Inspection and Closure Report**  
**Chincoteague 8 CTB 1**  
**API No. N/A**  
**GPS : Latitude 32.14750433 Longitude -103.7017021**  
**UL- E, Section 8, Township 25S, Range 32E**  
**Lea County, NM**  
**NMOCD Reference No. NAPP2411666919**

Devon Energy Production Company (Devon) has contracted Pima Environmental Services, LLC (Pima) to perform a liner inspection and prepare this closure report for a crude oil release that happened at the Chincoteague 8 CTB 1 (Chincoteague). This incident was assigned Incident ID: NAPP2411666919, by the New Mexico Oil Conservation Division (NMOCD).

#### **Site Information and Site Characterization**

The Chincoteague is located approximately twenty-two (22) miles southeast of Malaga, NM. This spill site is in Unit E, Section 8, Township 25S, Range 32E, Latitude 32.14750433 Longitude -103.7017021, Lea County, NM. A Location Map can be found in Figure 1.

Based upon New Mexico Office of the State Engineer (C-04536-POD 1) well water data, depth to the nearest groundwater in this area is 500 feet belowgrade surface (BGS), located approximately 2.77 miles from the Chincoteague. According to the United States Geological Survey (USGS321005103402301) well water data, depth to the nearest groundwater in this area is 290 feet BGS. See Appendix A for referenced water surveys. The Chincoteague is in a low karst area (Figure 3). A Topographic Map can be found in Figure 2.

#### **Release Information**

**NAPP2411666919:** On April 25, 2024, a gasket on the flange of the gun barrel leaked oil into lined containment. Approximately 6 barrels (bbls) of crude oil were released from the gun barrel, into the lined containment. A vacuum truck was called and was able to recover 6 bbls of standing fluid. The liner was visually inspected by Devon field staff for any pinholes or punctures; none were found. Based on this inspection there is no evidence that the spilled fluids left containment.

A Site Map can be found in Figure 4.

#### **Site Assessment and Liner Inspection**

On May 15, 2024, after submitting the 48-hour notification application ID:343500 to the OCD, Pima Environmental conducted a liner inspection at this location. Pima concluded that this liner and containment maintained its integrity and was able to retain the fluids. The liner inspection form and photographic documentation can be found in Appendix C.

**Closure Request**

After careful review, Pima requests that this incident ID: NAPP2411666919, be closed. Devon has complied with the applicable closure requirements.

Should you have any questions or need additional information, please feel free to contact Gio Gomez at 575-964-7740 or [Gio@pimaoil.com](mailto:Gio@pimaoil.com).

Respectfully,

*Gio Gomez*

Gio Gomez

Project Manager

Pima Environmental Services, LLC

**Attachments**

Figures:

- 1- Location Map
- 2- Topographic Map
- 3- Karst Map
- 4- Site Map

Appendices:

- Appendix A- Referenced Water Surveys
- Appendix B- 48 Hour Notification
- Appendix C- Liner Inspection Form & Photographic Documentation



Pima Environmental Services

**Figures:**

1-Location Map

2- Topographic Map

3- Karst Map



4- Site Map

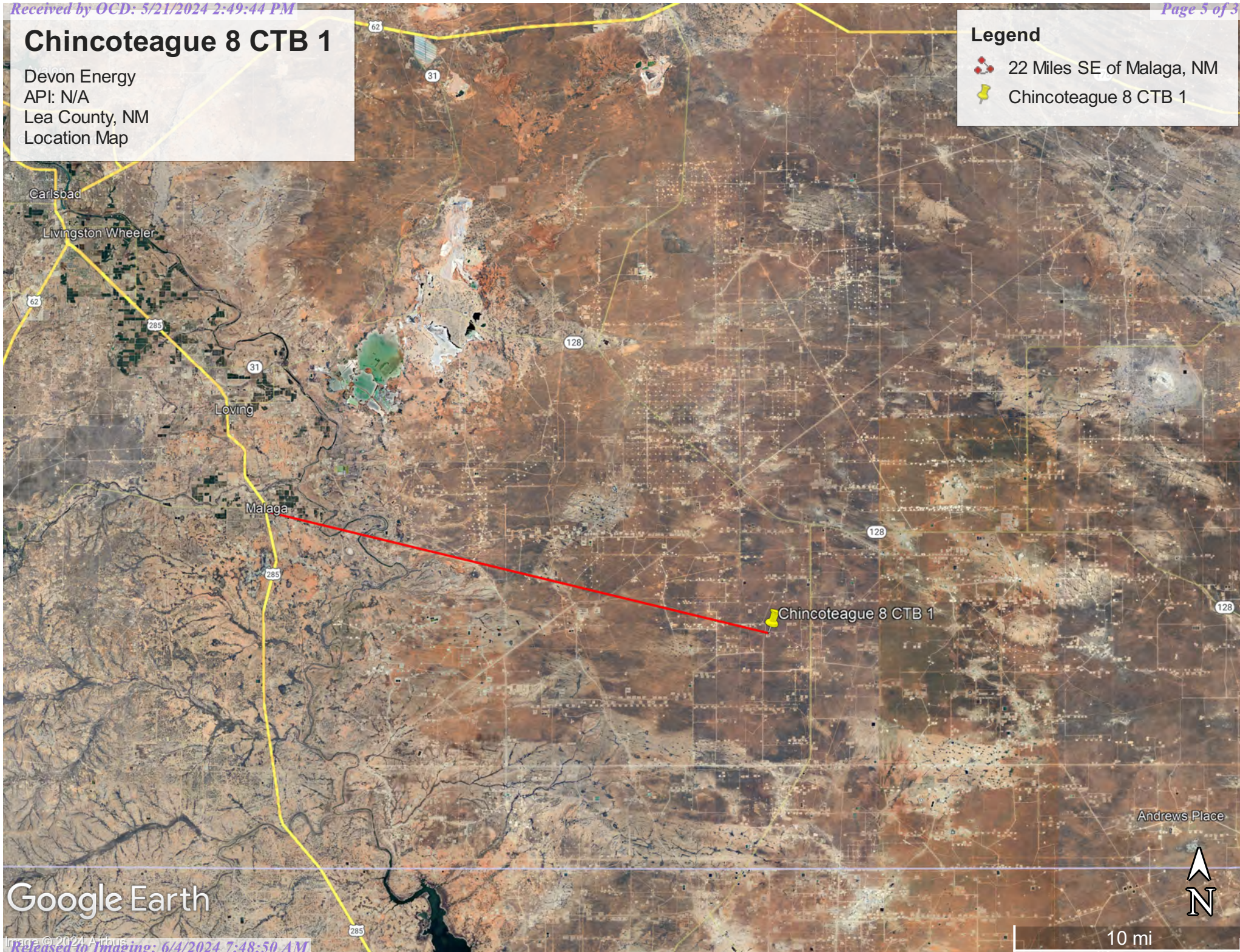


# Chincoteague 8 CTB 1

Devon Energy  
API: N/A  
Lea County, NM  
Location Map

## Legend

-  22 Miles SE of Malaga, NM
-  Chincoteague 8 CTB 1



Google Earth

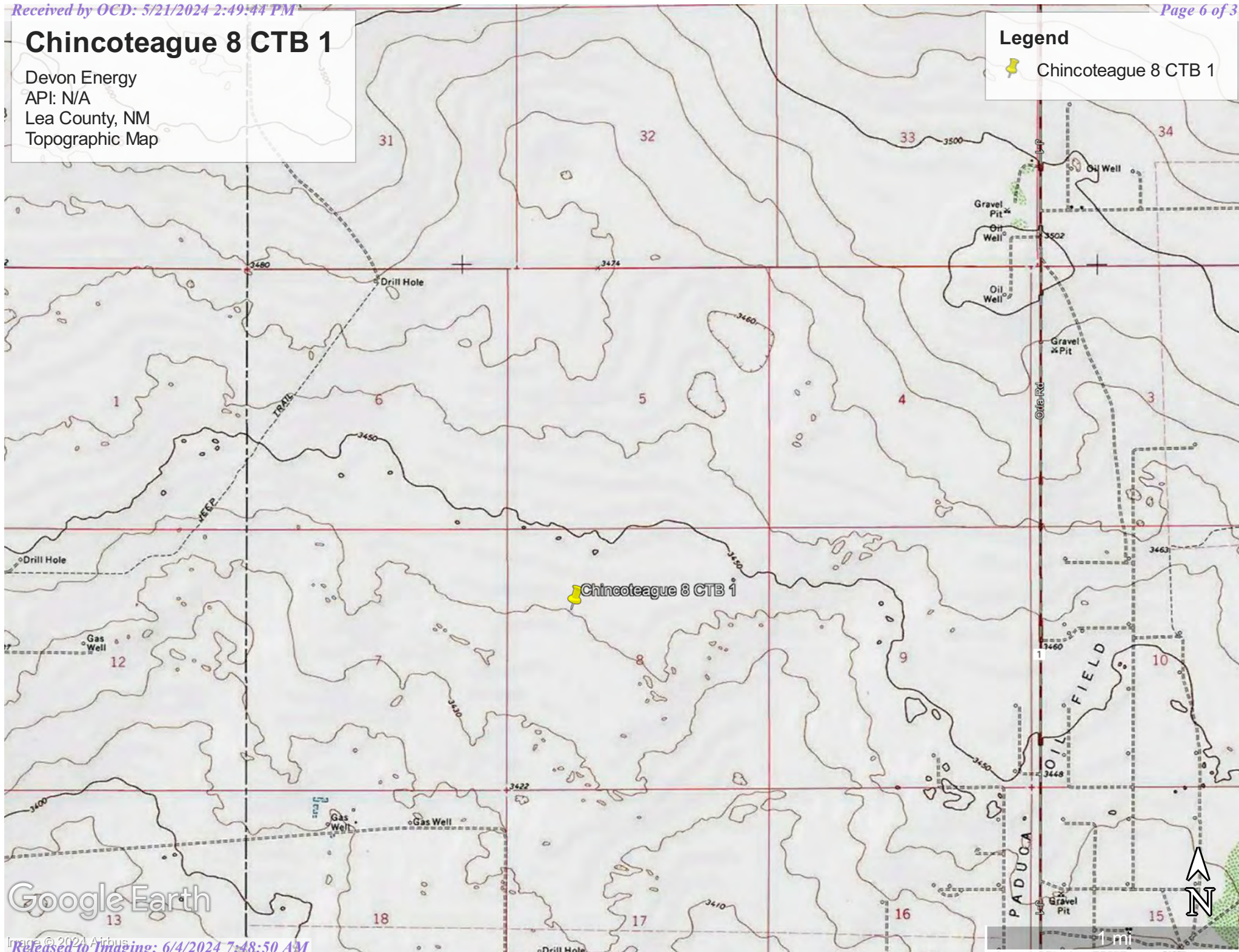


# Chincoteague 8 CTB 1

Devon Energy  
API: N/A  
Lea County, NM  
Topographic Map

## Legend

 Chincoteague 8 CTB 1





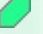
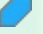
Google Earth

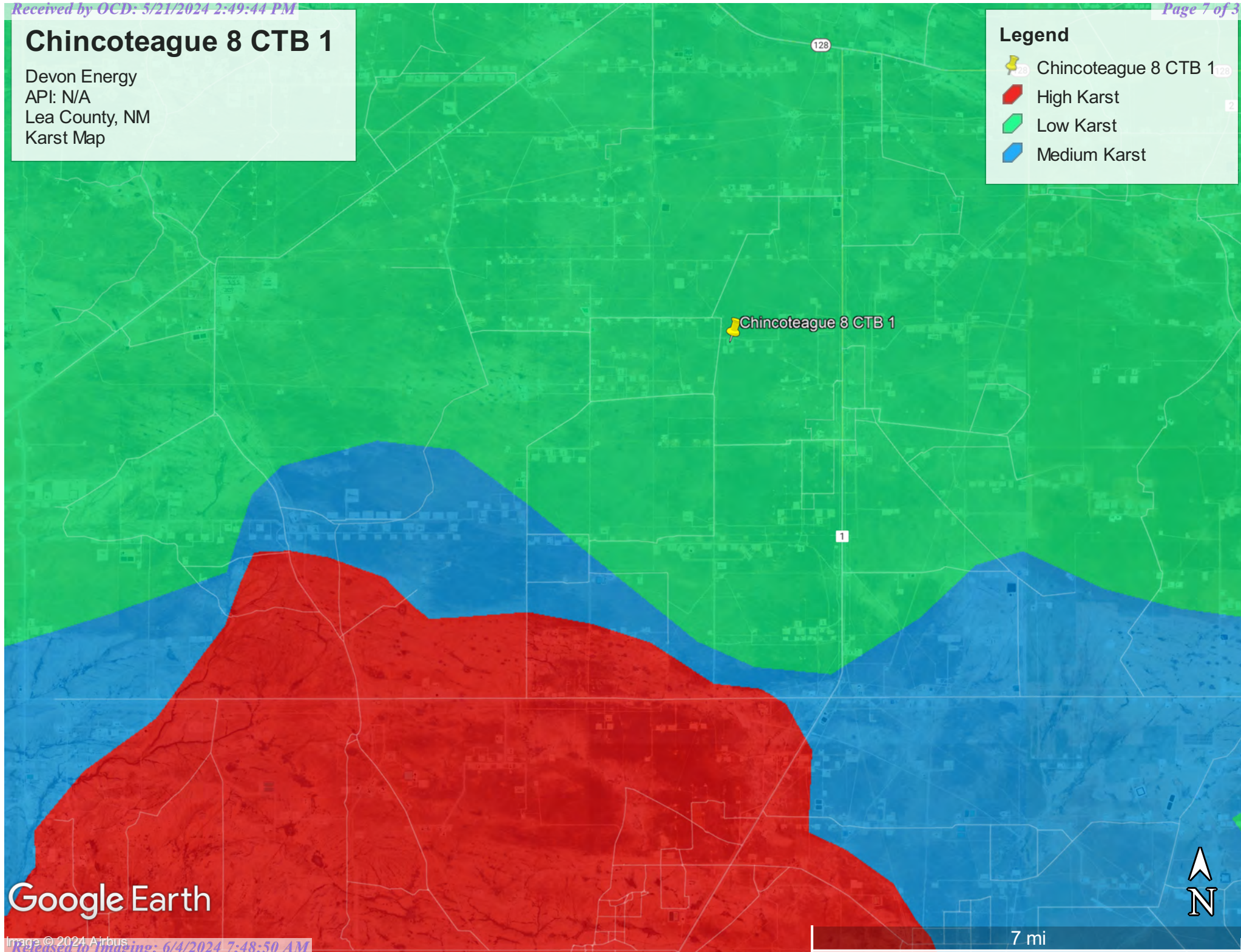


# Chincoteague 8 CTB 1

Devon Energy  
API: N/A  
Lea County, NM  
Karst Map

## Legend

-  Chincoteague 8 CTB 1
-  High Karst
-  Low Karst
-  Medium Karst





Google Earth




# Chincoteague 8 CTB 1

Devon Energy  
API:N/A  
Lea County, NM  
Site Map

## Legend

-  7,159 Sqft
-  Chincoteague 8 CTB 1

 Chincoteague 8 CTB 1



200 ft

Google Earth





Pima Environmental Services

**Appendix A**

Water Surveys:

OSE

USGS

Surface Water Map

Wetlands Map

FEMA

SOIL



# New Mexico Office of the State Engineer

## Water Column/Average Depth to Water

(A CLW##### in the POD suffix indicates the POD has been replaced & no longer serves a water right file.)

(R=POD has been replaced,  
O=orphaned,  
C=the file is closed)

(quarters are 1=NW 2=NE 3=SW 4=SE)  
(quarters are smallest to largest) (NAD83 UTM in meters)

(In feet)

POD Number	Code	POD Sub-basin	County	Q 64	Q 16	Q 4	Sec	Tws	Rng	X	Y	Distance	DepthWell	DepthWater	Water Column
<a href="#">C 04795 POD1</a>		CUB	LE	4	4	1	08	25S	32E	622865	3557423	436			
<a href="#">C 04620 POD1</a>		CUB	LE	4	3	4	06	25S	32E	621445	3558018	1111	55		
<a href="#">C 04635 POD1</a>		CUB	ED	4	3	4	01	25S	31E	619958	3558078	2543	55		
<a href="#">C 04722 POD2</a>		CUB	LE	2	1	1	06	25S	32E	620808	3559499	2562	55		
<a href="#">C 04792 POD1</a>		CUB	ED	1	3	4	12	25S	31E	619688	3556651	2887	55		
<a href="#">C 04618 POD1</a>		CUB	LE	3	4	3	18	25S	32E	621041	3554886	2984	55		
<a href="#">C 04634 POD1</a>		CUB	LE	4	3	3	10	25S	32E	625643	3556522	3355	55		
<a href="#">C 02568</a>		CUB	ED	4	3	1	01	25S	31E	619103	3558892*	3606	1025		
<a href="#">C 02570</a>		CUB	ED	4	2	4	02	25S	31E	618704	3558489*	3858	895		
<a href="#">C 03830 POD1</a>		CUB	ED	4	2	4	02	25S	31E	618632	3558432	3914	450		
<a href="#">C 02569</a>		CUB	ED	4	4	2	02	25S	31E	618699	3558891*	3983	1016		
<a href="#">C 02572</a>		CUB	ED	4	2	2	02	25S	31E	618695	3559294*	4142	852		
<a href="#">C 02573</a>		CUB	ED	1	4	2	02	25S	31E	618499	3559091*	4241			
<a href="#">C 02571</a>		CUB	ED	4	1	2	02	25S	31E	618292	3559294*	4510	860		
<a href="#">C 04536 POD1</a>		C	LE	1	2	2	33	24S	32E	625019	3561244	4527	500	314	186
<a href="#">C 04654 POD1</a>		CUB	ED	3	3	4	25	24S	31E	619764	3561226	4569	55		
<a href="#">C 02574</a>		CUB	ED	1	1	2	02	25S	31E	618092	3559494*	4773			
<a href="#">C 04636 POD1</a>		CUB	ED	3	4	3	25	24S	31E	619200	3561279	4960			
<a href="#">C 04643 POD1</a>		C	ED	4	2	2	05	23S	27E	619200	3561279	4960	305	135	170

Average Depth to Water: **224 feet**

Minimum Depth: **135 feet**

Maximum Depth: **314 feet**

**Record Count:** 19

### UTM NAD83 Radius Search (in meters):

**Easting (X):** 622439.89

**Northing (Y):** 3557523.25

**Radius:** 5000

\*UTM location was derived from PLSS - see Help

The data is furnished by the NMOSE/ISC and is accepted by the recipient with the expressed understanding that the OSE/ISC make no warranties, expressed or implied, concerning the accuracy, completeness, reliability, usability, or suitability for any particular purpose of the data.

5/13/24 10:29 AM


WATER COLUMN/ AVERAGE DEPTH TO WATER





# New Mexico Office of the State Engineer

## Point of Diversion Summary

		(quarters are 1=NW 2=NE 3=SW 4=SE)				(quarters are smallest to largest)				(NAD83 UTM in meters)	
Well Tag	POD Number	Q64	Q16	Q4	Sec	Tws	Rng	X	Y		
20E37	C 04536 POD1	1	2	2	33	24S	32E	625019	3561244		
<hr/>											
Driller License:		1706		Driller Company:			ELITE DRILLERS CORPORATION				
Driller Name:		BRYCE WALLACE									
Drill Start Date:		06/09/2021		Drill Finish Date:			06/10/2021		Plug Date:		
Log File Date:		06/21/2021		PCW Rcv Date:					Source:		Shallow
Pump Type:					Pipe Discharge Size:					Estimated Yield: 4 GPM	
Casing Size:		4.30		Depth Well:			500 feet		Depth Water:		314 feet
<hr/>											
Water Bearing Stratifications:				Top	Bottom	Description					
				235	480	Sandstone/Gravel/Conglomerate					
<hr/>											
Casing Perforations:				Top	Bottom						
				300	500						
<hr/>											

The data is furnished by the NMOSE/ISC and is accepted by the recipient with the expressed understanding that the OSE/ISC make no warranties, expressed or implied, concerning the accuracy, completeness, reliability, usability, or suitability for any particular purpose of the data.

5/13/24 10:29 AM


POINT OF DIVERSION SUMMARY





# Chincoteague 8 CTB 1

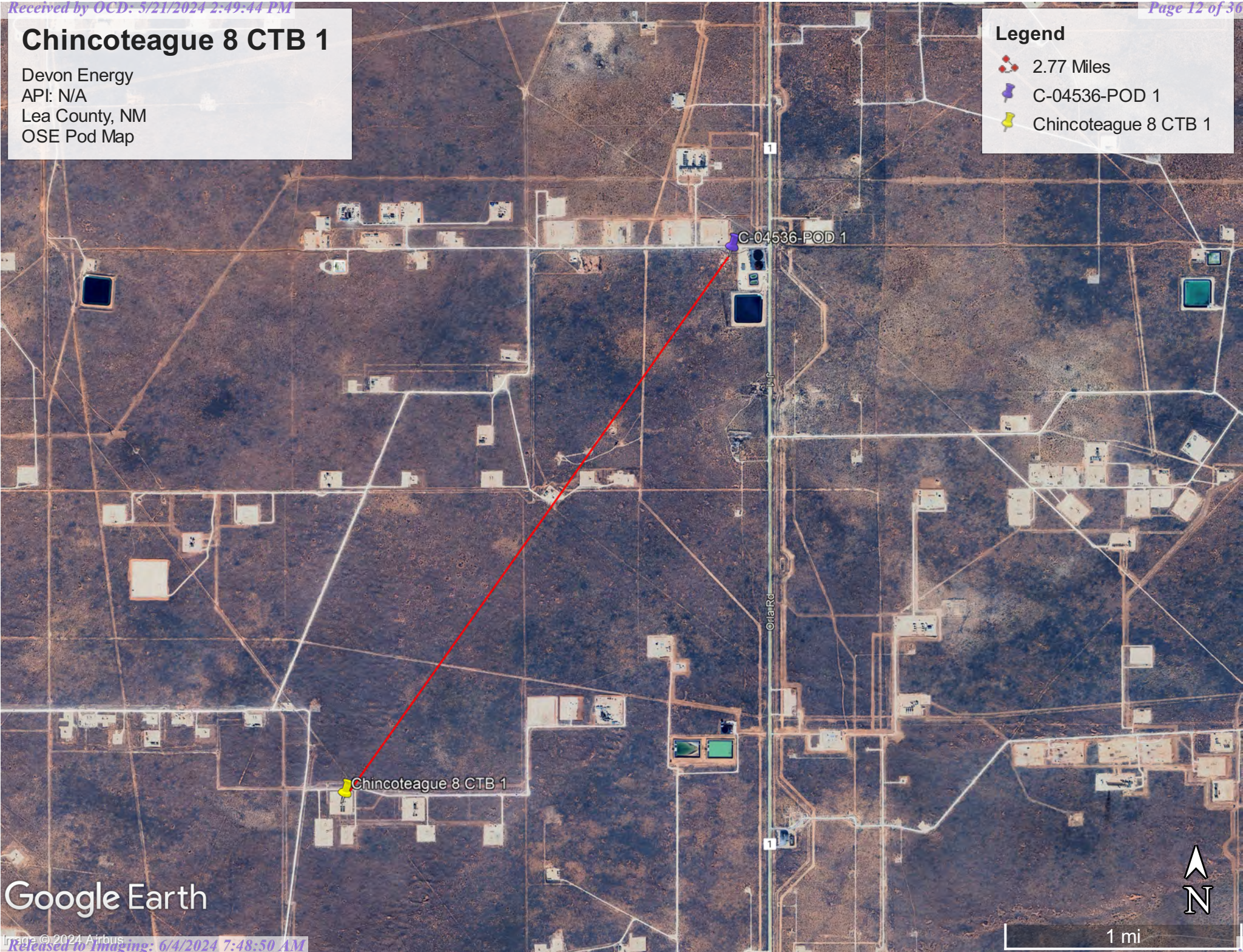
Devon Energy  
API: N/A  
Lea County, NM  
OSE Pod Map

Legend

 2.77 Miles

 C-04536-POD 1

 Chincoteague 8 CTB 1



Google Earth





[USGS Home](#)  
[Contact USGS](#)  
[Search USGS](#)

## National Water Information System: Web Interface

USGS Water Resources

Data Category:

Groundwater

▼


Geographic Area:

United States

▼

GO

Click to hideNews Bulletins

- Explore the *NEW* [USGS National Water Dashboard](#) interactive map to access real-time water data from over 13,500 stations nationwide.
- [Full News](#) 

Groundwater levels for the Nation

 Important: [Next Generation Monitoring Location Page](#)

### Search Results -- 1 sites found

site\_no list =

- 321005103402301

Minimum number of levels = 1

[Save file of selected sites](#) to local disk for future upload

### USGS 321005103402301 24S.32E.33.42241

Available data for this site 

Groundwater: Field measurements

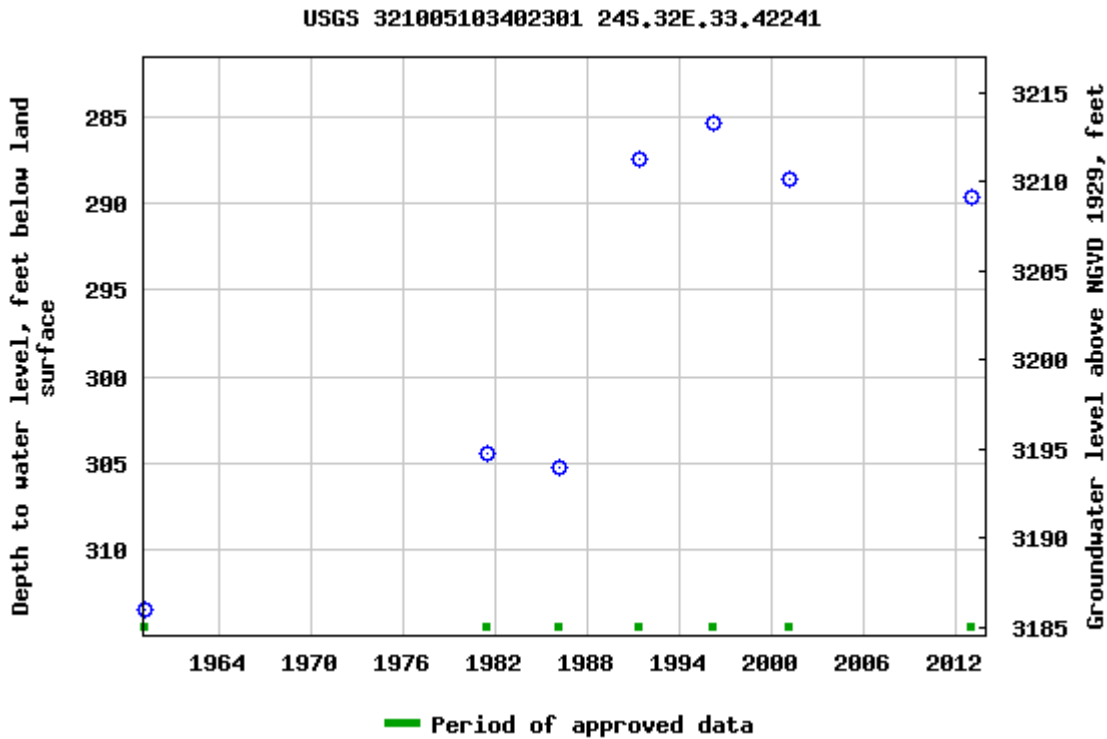
▼

GO

Lea County, New Mexico  
Hydrologic Unit Code 13070001  
Latitude 32°10'21.6", Longitude 103°40'18.9" NAD83  
Land-surface elevation 3,499.00 feet above NGVD29  
The depth of the well is 367 feet below land surface.  
This well is completed in the Other aquifers (N9999OTHER) national aquifer.  
This well is completed in the Chinle Formation (231CHNL) local aquifer.

Output formats

<a href="#">Table of data</a>
<a href="#">Tab-separated data</a>
<a href="#">Graph of data</a>
<a href="#">Reselect period</a>



Breaks in the plot represent a gap of at least one year between field measurements.

[Download a presentation-quality graph](#)

[Questions or Comments](#)

[Automated retrievals](#)

[Help](#)

[Data Tips](#)

[Explanation of terms](#)

[Subscribe for system changes](#)

[News](#)



[Accessibility](#) [FOIA](#) [Privacy](#) [Policies and Notices](#)

[U.S. Department of the Interior](#) | [U.S. Geological Survey](#)

**Title: Groundwater for USA: Water Levels**

**URL: <https://nwis.waterdata.usgs.gov/nwis/gwlevels?>**

Page Contact Information: [USGS Water Data Support Team](#)

Page Last Modified: 2024-05-13 11:58:48 EDT

0.69 0.58 nadww01






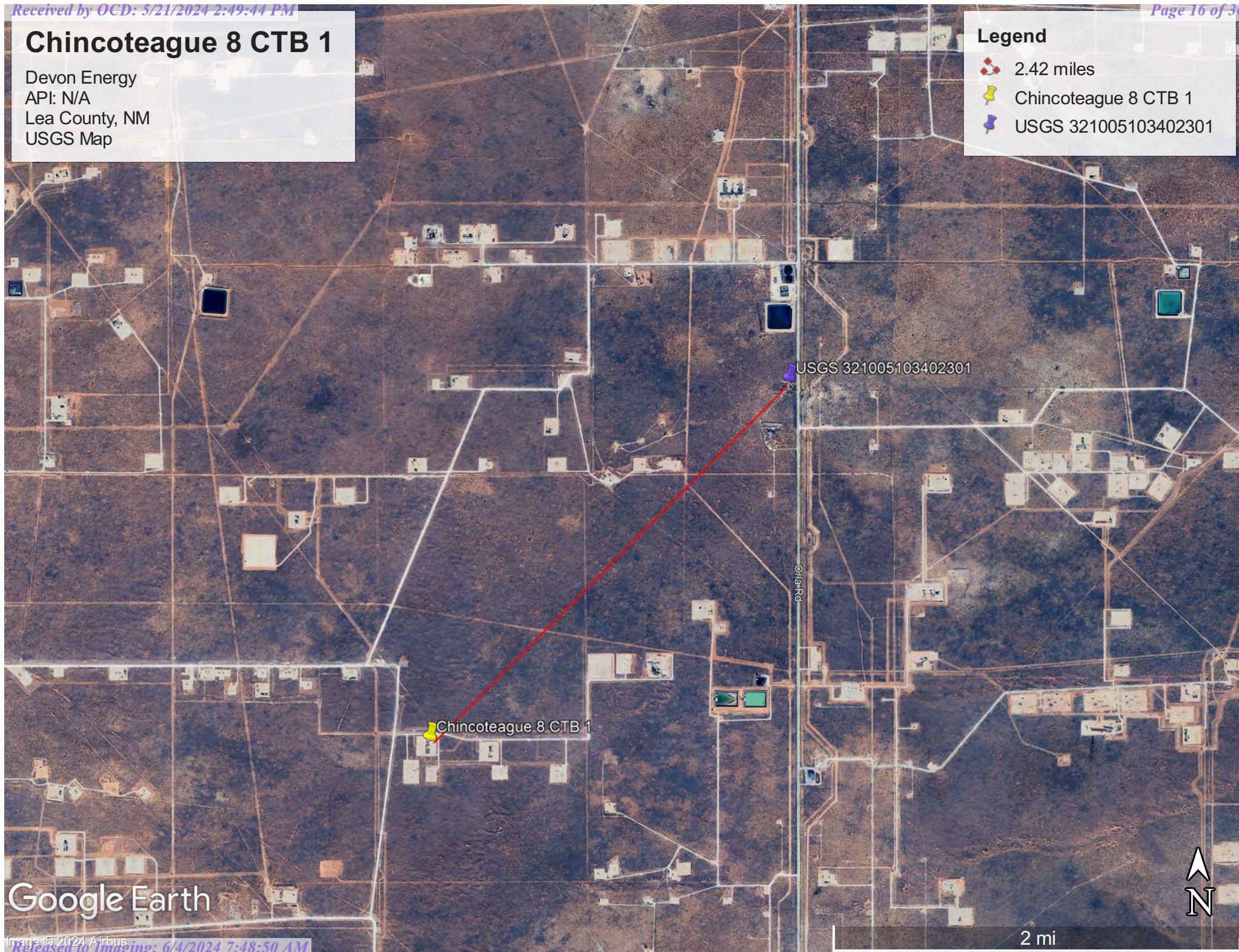


# Chincoteague 8 CTB 1

Devon Energy  
API: N/A  
Lea County, NM  
USGS Map

## Legend

-  2.42 miles
-  Chincoteague 8 CTB 1
-  USGS 321005103402301






Google Earth

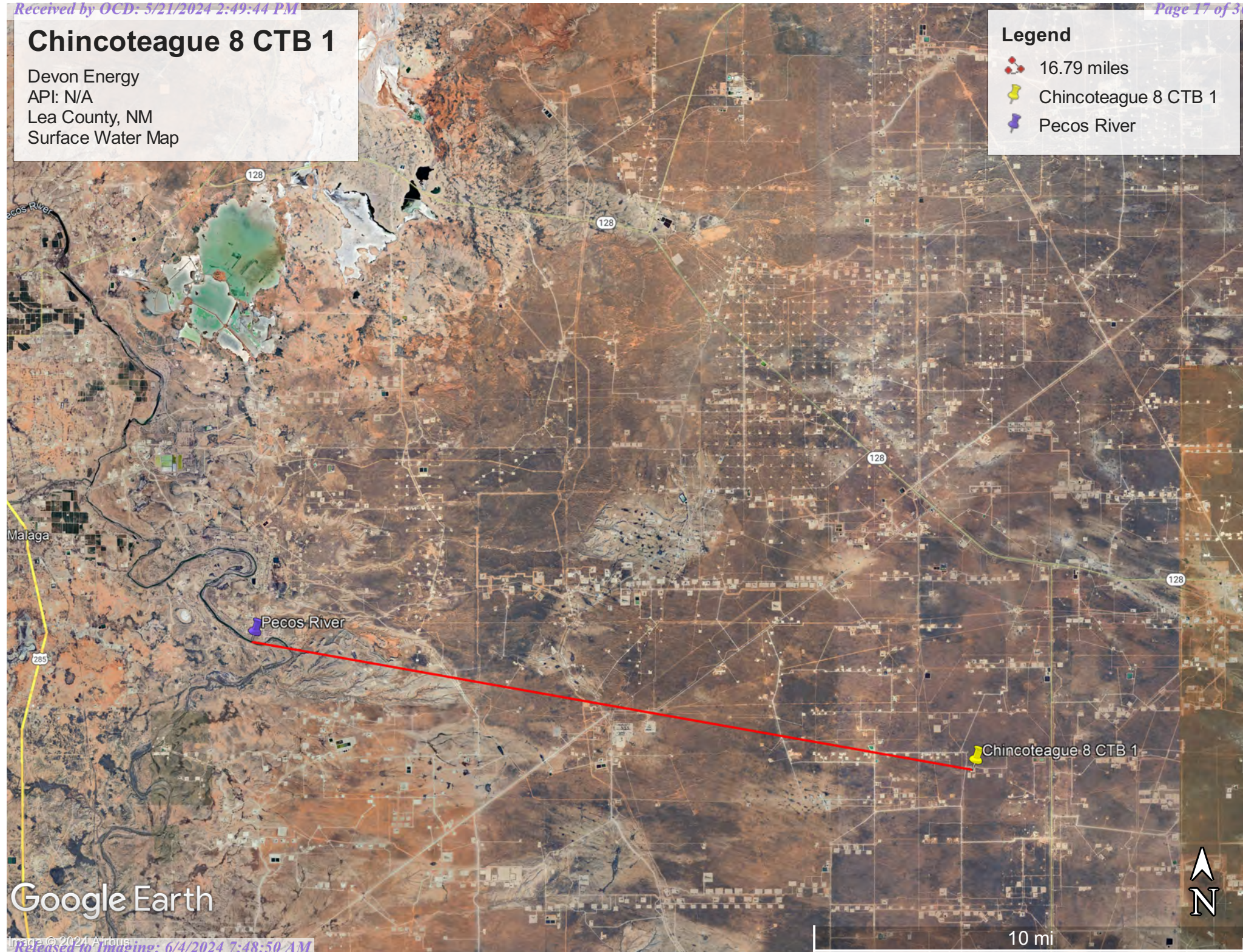


# Chincoteague 8 CTB 1

Devon Energy  
API: N/A  
Lea County, NM  
Surface Water Map

## Legend

-  16.79 miles
-  Chincoteague 8 CTB 1
-  Pecos River



Google Earth





May 13, 2024

Wetlands

- |   |                                |   |                                   |   |          |
|---|--------------------------------|---|-----------------------------------|---|----------|
|  | Estuarine and Marine Deepwater |  | Freshwater Emergent Wetland       |  | Lake     |
|  | Estuarine and Marine Wetland   |  | Freshwater Forested/Shrub Wetland |  | Other    |
|  |                                |  | Freshwater Pond                   |  | Riverine |

This map is for general reference only. The US Fish and Wildlife Service is not responsible for the accuracy or currentness of the base data shown on this map. All wetlands related data should be used in accordance with the layer metadata found on the Wetlands Mapper web site.



# National Flood Hazard Layer FIRMette



103°42'25"W 32°9'6"N



0 250 500 1,000 1,500 2,000 Feet

1:6,000

103°41'47"W 32°8'36"N

Basemap Imagery Source: USGS National Map 2023

### Legend

SEE FIS REPORT FOR DETAILED LEGEND AND INDEX MAP FOR FIRM PANEL LAYOUT

SPECIAL FLOOD HAZARD AREAS		Without Base Flood Elevation (BFE) Zone A, V, A99
		With BFE or Depth Zone AE, AO, AH, VE, AR
		Regulatory Floodway
OTHER AREAS OF FLOOD HAZARD		0.2% Annual Chance Flood Hazard, Areas of 1% annual chance flood with average depth less than one foot or with drainage areas of less than one square mile
		Future Conditions 1% Annual Chance Flood Hazard Zone X
		Area with Reduced Flood Risk due to Levee. See Notes. Zone X
		Area with Flood Risk due to Levee Zone X
OTHER AREAS		NO SCREEN Area of Minimal Flood Hazard Zone X
		Effective LOMRs
		Area of Undetermined Flood Hazard Zone D
GENERAL STRUCTURES		Channel, Culvert, or Storm Sewer
		Levee, Dike, or Floodwall
OTHER FEATURES		20.2 Cross Sections with 1% Annual Chance
		17.5 Water Surface Elevation
		Coastal Transect
		Base Flood Elevation Line (BFE)
		Limit of Study
		Jurisdiction Boundary
MAP PANELS		Coastal Transect Baseline
		Profile Baseline
		Hydrographic Feature
		Digital Data Available
		No Digital Data Available
		Unmapped

The pin displayed on the map is an approximate point selected by the user and does not represent an authoritative property location.

This map complies with FEMA's standards for the use of digital flood maps if it is not void as described below. The basemap shown complies with FEMA's basemap accuracy standards

The flood hazard information is derived directly from the authoritative NFHL web services provided by FEMA. This map was exported on **5/13/2024 at 12:02 PM** and does not reflect changes or amendments subsequent to this date and time. The NFHL and effective information may change or become superseded by new data over time.

This map image is void if the one or more of the following map elements do not appear: basemap imagery, flood zone labels, legend, scale bar, map creation date, community identifiers, FIRM panel number, and FIRM effective date. Map images for unmapped and unmodernized areas cannot be used for regulatory purposes.

Received by OCD: 5/13/2024 2:49:44 PM

Map Unit Description: Maljamar and Palomas fine sands, 0 to 3 percent slopes---Lea County,  
New Mexico

---

## Lea County, New Mexico

### MF—Maljamar and Palomas fine sands, 0 to 3 percent slopes

#### Map Unit Setting

*National map unit symbol:* dmqb

*Elevation:* 3,000 to 3,900 feet

*Mean annual precipitation:* 10 to 15 inches

*Mean annual air temperature:* 60 to 62 degrees F

*Frost-free period:* 190 to 205 days

*Farmland classification:* Farmland of statewide importance

#### Map Unit Composition

*Maljamar and similar soils:* 46 percent

*Palomas and similar soils:* 44 percent

*Minor components:* 10 percent

*Estimates are based on observations, descriptions, and transects of  
the mapunit.*

#### Description of Maljamar

##### Setting

*Landform:* Plains

*Landform position (three-dimensional):* Rise

*Down-slope shape:* Linear

*Across-slope shape:* Linear

*Parent material:* Sandy eolian deposits derived from sedimentary  
rock

##### Typical profile

*A - 0 to 24 inches:* fine sand

*Bt - 24 to 50 inches:* sandy clay loam

*Bkm - 50 to 60 inches:* cemented material

##### Properties and qualities

*Slope:* 0 to 3 percent

*Depth to restrictive feature:* 40 to 60 inches to petrocalcic

*Drainage class:* Well drained

*Runoff class:* Very low

*Capacity of the most limiting layer to transmit water (Ksat):* Very low  
to moderately low (0.00 to 0.06 in/hr)

*Depth to water table:* More than 80 inches

*Frequency of flooding:* None

*Frequency of ponding:* None

*Calcium carbonate, maximum content:* 5 percent

*Maximum salinity:* Nonsaline to very slightly saline (0.0 to 2.0  
mmhos/cm)

*Sodium adsorption ratio, maximum:* 2.0

*Available water supply, 0 to 60 inches:* Low (about 5.6 inches)

##### Interpretive groups

*Land capability classification (irrigated):* 7e



Map Unit Description: Maljamar and Palomas fine sands, 0 to 3 percent slopes---Lea County,  
New Mexico

---

*Land capability classification (nonirrigated): 7e*  
*Hydrologic Soil Group: B*  
*Ecological site: R070BD003NM - Loamy Sand*  
*Hydric soil rating: No*

## Description of Palomas

### Setting

*Landform: Plains*  
*Landform position (three-dimensional): Rise*  
*Down-slope shape: Linear*  
*Across-slope shape: Linear*  
*Parent material: Alluvium derived from sandstone*

### Typical profile

*A - 0 to 16 inches: fine sand*  
*Bt - 16 to 60 inches: sandy clay loam*  
*Bk - 60 to 66 inches: sandy loam*

### Properties and qualities

*Slope: 0 to 3 percent*  
*Depth to restrictive feature: More than 80 inches*  
*Drainage class: Well drained*  
*Runoff class: Low*  
*Capacity of the most limiting layer to transmit water*  
*(Ksat): Moderately high to high (0.60 to 2.00 in/hr)*  
*Depth to water table: More than 80 inches*  
*Frequency of flooding: None*  
*Frequency of ponding: None*  
*Calcium carbonate, maximum content: 45 percent*  
*Gypsum, maximum content: 1 percent*  
*Maximum salinity: Nonsaline to very slightly saline (0.0 to 2.0*  
*mmhos/cm)*  
*Sodium adsorption ratio, maximum: 2.0*  
*Available water supply, 0 to 60 inches: Moderate (about 7.5*  
*inches)*

### Interpretive groups

*Land capability classification (irrigated): None specified*  
*Land capability classification (nonirrigated): 7e*  
*Hydrologic Soil Group: B*  
*Ecological site: R070BD003NM - Loamy Sand*  
*Hydric soil rating: No*

## Minor Components

### Kermit

*Percent of map unit: 5 percent*  
*Ecological site: R070BC022NM - Sandhills*  
*Hydric soil rating: No*

### Wink

*Percent of map unit: 5 percent*  
*Ecological site: R070BD003NM - Loamy Sand*

Map Unit Description: Maljamar and Palomas fine sands, 0 to 3 percent slopes---Lea County,  
New Mexico

---

*Hydric soil rating:* No

## Data Source Information

Soil Survey Area: Lea County, New Mexico  
Survey Area Data: Version 20, Sep 6, 2023





Pima Environmental Services

## **Appendix B**

### 48-Hour Notification

**lynsey@pimaoil.com**

---

**From:** Woodall, Dale <Dale.Woodall@dvn.com>  
**Sent:** Monday, May 13, 2024 9:39 AM  
**To:** 'Gio PimaOil'; Lynsey Pima Oil  
**Subject:** FW: [EXTERNAL] The Oil Conservation Division (OCD) has accepted the application, Application ID: 343500

Dale Woodall  
**Environmental Professional**  
**Hobbs, NM**  
**Office:** 575-748-1838  
**Mobile:** 405-318-4697  
[Dale.Woodall@dvn.com](mailto:Dale.Woodall@dvn.com)

---

**From:** OCDOnline@state.nm.us <OCDOnline@state.nm.us>  
**Sent:** Monday, May 13, 2024 9:39 AM  
**To:** Woodall, Dale <Dale.Woodall@dvn.com>  
**Subject:** [EXTERNAL] The Oil Conservation Division (OCD) has accepted the application, Application ID: 343500

To whom it may concern (c/o Dale Woodall for DEVON ENERGY PRODUCTION COMPANY, LP),

The OCD has received the submitted *Notification for Liner Inspection for a Release* (C-141L), for incident ID (n#) nAPP2411666919.

The liner inspection is expected to take place:

**When:** 05/15/2024 @ 10:20

**Where:** E-08-25S-32E 1661 FNL 1261 FWL (32.14750433,-103.7017021)

**Additional Information:** visually inspected for any pinholes or punctures, will be conducted by Andrew Franco 806-200-0054

**Additional Instructions:** E-08-25S-32E, ( 32.14750433,-103.7017021 NAD83) From the intersection of Orla Rd and Monsanto Ln, travel west on Monsanto Ln for 2.06 miles, turn north on Lease Rd for 1.71 miles, turn east on lease Rd for 0.21 of a mile, arriving to location on the right.

An OCD representative may be available onsite at the date and time reported. In the absence or presence of an OCD representative, liner inspection pursuant to 19.15.29.11.A(5)(a) NMAC is required. Should there be a change in the scheduled date and time of the sampling event, then another notification should be resubmitted through OCD permitting as soon as possible.

- **Failure to notify the OCD of liner inspections including any changes in date/time per the requirements of 19.15.29.11.A(5)(a)(ii) NMAC, may result in the inspection not being accepted.**



If you have any questions regarding this application, or don't know why you have received this email, please contact us.

**New Mexico Energy, Minerals and Natural Resources Department**

1220 South St. Francis Drive

Santa Fe, NM 87505

Confidentiality Warning: This message and any attachments are intended only for the use of the intended recipient(s), are confidential, and may be privileged. If you are not the intended recipient, you are hereby notified that any review, retransmission, conversion to hard copy, copying, circulation or other use of all or any portion of this message and any attachments is strictly prohibited. If you are not the intended recipient, please notify the sender immediately by return e-mail, and delete this message and any attachments from your system.



Pima Environmental Services

## **Appendix C**

Liner Inspection Form

Photographic Documentation





Pima Environmental Services, LLC

**Liner Inspection Form**Company Name: Devon EnergySite: Chincoteague 8 CTB 1Lat/Long: 32.14750433,-103.7017021NMOCD Incident ID  
& Incident Date: NAPP2411666919 4/25/20242-Day Notification  
Sent: via Email by Dale Woodall on OCD portal 5/13/2024Inspection Date: 5/15/2024 Application ID: 343500

Liner Type:	Earthen w/liner	Earthen no liner	Polystar
	<b>Steel w/poly liner</b>	Steel w/spray epoxy	No Liner

Other: \_\_\_\_\_

Visualization	Yes	No	Comments
Is there a tear in the liner?		X	
Are there holes in the liner?		X	
Is the liner retaining any fluids?	X		Fluid from power washing the Liner
Does the liner have integrity to contain a leak?	X		

Comments: \_\_\_\_\_

Inspector Name: Andrew Franco Inspector Signature: Andrew Franco



## SITE PHOTOGRAPHS

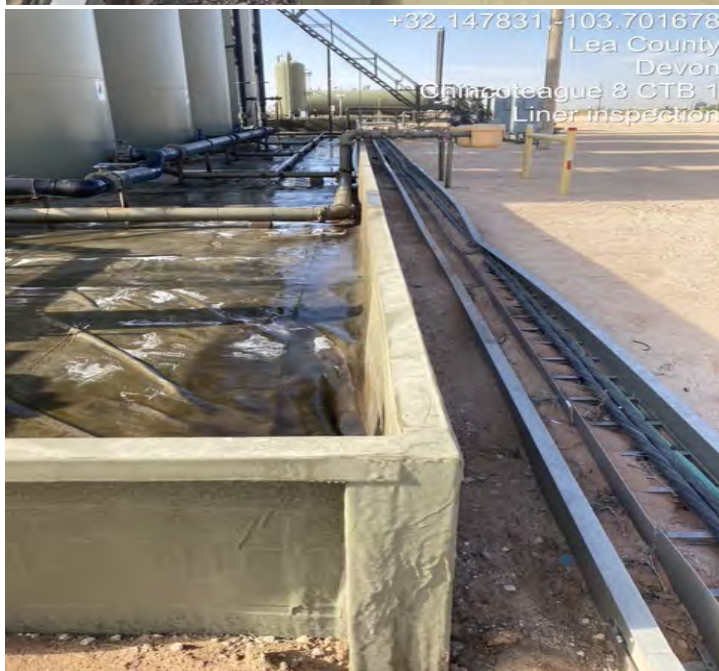
### DEVON ENERGY

#### Marwari 28 CTB 1

#### Liner Inspection











**District I**  
1625 N. French Dr., Hobbs, NM 88240  
Phone:(575) 393-6161 Fax:(575) 393-0720  
**District II**  
811 S. First St., Artesia, NM 88210  
Phone:(575) 748-1283 Fax:(575) 748-9720  
**District III**  
1000 Rio Brazos Rd., Aztec, NM 87410  
Phone:(505) 334-6178 Fax:(505) 334-6170  
**District IV**  
1220 S. St Francis Dr., Santa Fe, NM 87505  
Phone:(505) 476-3470 Fax:(505) 476-3462

State of New Mexico  
Energy, Minerals and Natural Resources  
Oil Conservation Division  
1220 S. St Francis Dr.  
Santa Fe, NM 87505

QUESTIONS  
  
Action 346445

QUESTIONS

Operator: DEVON ENERGY PRODUCTION COMPANY, LP 333 West Sheridan Ave. Oklahoma City, OK 73102	OGRID:	6137
	Action Number:	346445
	Action Type:	[C-141] Remediation Closure Request C-141 (C-141-v-Closure)

QUESTIONS

Prerequisites	
Incident ID (n#)	nAPP2411666919
Incident Name	NAPP2411666919 CHINCOTEAGUE 8 CTB 1 @ 0
Incident Type	Oil Release
Incident Status	Remediation Closure Report Received
Incident Facility	[fAPP2130746714] CHINCOTEAGUE 8 CTB 1

Location of Release Source	
Please answer all the questions in this group.	
Site Name	CHINCOTEAGUE 8 CTB 1
Date Release Discovered	04/25/2024
Surface Owner	Federal

Incident Details	
Please answer all the questions in this group.	
Incident Type	Oil Release
Did this release result in a fire or is the result of a fire	No
Did this release result in any injuries	No
Has this release reached or does it have a reasonable probability of reaching a watercourse	No
Has this release endangered or does it have a reasonable probability of endangering public health	No
Has this release substantially damaged or will it substantially damage property or the environment	No
Is this release of a volume that is or may with reasonable probability be detrimental to fresh water	No

Nature and Volume of Release	
Material(s) released, please answer all that apply below. Any calculations or specific justifications for the volumes provided should be attached to the follow-up C-141 submission.	
Crude Oil Released (bbls) Details	Cause: Equipment Failure   Production Tank   Crude Oil   Released: 6 BBL   Recovered: 6 BBL   Lost: 0 BBL.
Produced Water Released (bbls) Details	Not answered.
Is the concentration of chloride in the produced water >10,000 mg/l	No
Condensate Released (bbls) Details	Not answered.
Natural Gas Vented (Mcf) Details	Not answered.
Natural Gas Flared (Mcf) Details	Not answered.
Other Released Details	Not answered.
Are there additional details for the questions above (i.e. any answer containing Other, Specify, Unknown, and/or Fire, or any negative lost amounts)	gasket on flange on gun barrel leaked oil into lined containment. 6.3 bbls spilled. 6.3 bbls recovered

**District I**

1625 N. French Dr., Hobbs, NM 88240  
Phone:(575) 393-6161 Fax:(575) 393-0720

**District II**

811 S. First St., Artesia, NM 88210  
Phone:(575) 748-1283 Fax:(575) 748-9720

**District III**

1000 Rio Brazos Rd., Aztec, NM 87410  
Phone:(505) 334-6178 Fax:(505) 334-6170

**District IV**

1220 S. St Francis Dr., Santa Fe, NM 87505  
Phone:(505) 476-3470 Fax:(505) 476-3462

**State of New Mexico**  
**Energy, Minerals and Natural Resources**  
**Oil Conservation Division**  
**1220 S. St Francis Dr.**  
**Santa Fe, NM 87505**

QUESTIONS, Page 2

Action 346445

**QUESTIONS (continued)**

Operator: DEVON ENERGY PRODUCTION COMPANY, LP 333 West Sheridan Ave. Oklahoma City, OK 73102	OGRID:	6137
	Action Number:	346445
	Action Type:	[C-141] Remediation Closure Request C-141 (C-141-v-Closure)

**QUESTIONS**

<b>Nature and Volume of Release (continued)</b>	
Is this a gas only submission (i.e. only significant Mcf values reported)	No, according to supplied volumes this does not appear to be a "gas only" report.
Was this a major release as defined by Subsection A of 19.15.29.7 NMAC	No
Reasons why this would be considered a submission for a notification of a major release	Unavailable.
With the implementation of the 19.15.27 NMAC (05/25/2021), venting and/or flaring of natural gas (i.e. gas only) are to be submitted on the C-129 form.	

**Initial Response**

The responsible party must undertake the following actions immediately unless they could create a safety hazard that would result in injury.

The source of the release has been stopped	True
The impacted area has been secured to protect human health and the environment	True
Released materials have been contained via the use of berms or dikes, absorbent pads, or other containment devices	True
All free liquids and recoverable materials have been removed and managed appropriately	True
If all the actions described above have not been undertaken, explain why	Not answered.

Per Paragraph (4) of Subsection B of 19.15.29.8 NMAC the responsible party may commence remediation immediately after discovery of a release. If remediation has begun, please prepare and attach a narrative of actions to date in the follow-up C-141 submission. If remedial efforts have been successfully completed or if the release occurred within a lined containment area (see Subparagraph (a) of Paragraph (5) of Subsection A of 19.15.29.11 NMAC), please prepare and attach all information needed for closure evaluation in the follow-up C-141 submission.

I hereby certify that the information given above is true and complete to the best of my knowledge and understand that pursuant to OCD rules and regulations all operators are required to report and/or file certain release notifications and perform corrective actions for releases which may endanger public health or the environment. The acceptance of a C-141 report by the OCD does not relieve the operator of liability should their operations have failed to adequately investigate and remediate contamination that pose a threat to groundwater, surface water, human health or the environment. In addition, OCD acceptance of a C-141 report does not relieve the operator of responsibility for compliance with any other federal, state, or local laws and/or regulations.

I hereby agree and sign off to the above statement	Name: Dale Woodall Title: EHS Professional Email: Dale.Woodall@dmn.com Date: 05/21/2024
--	--



**District I**

1625 N. French Dr., Hobbs, NM 88240  
Phone:(575) 393-6161 Fax:(575) 393-0720

**District II**

811 S. First St., Artesia, NM 88210  
Phone:(575) 748-1283 Fax:(575) 748-9720

**District III**

1000 Rio Brazos Rd., Aztec, NM 87410  
Phone:(505) 334-6178 Fax:(505) 334-6170

**District IV**

1220 S. St Francis Dr., Santa Fe, NM 87505  
Phone:(505) 476-3470 Fax:(505) 476-3462

**State of New Mexico**  
**Energy, Minerals and Natural Resources**  
**Oil Conservation Division**  
**1220 S. St Francis Dr.**  
**Santa Fe, NM 87505**

QUESTIONS, Page 3

Action 346445

**QUESTIONS (continued)**

Operator: DEVON ENERGY PRODUCTION COMPANY, LP 333 West Sheridan Ave. Oklahoma City, OK 73102	OGRID:	6137
	Action Number:	346445
	Action Type:	[C-141] Remediation Closure Request C-141 (C-141-v-Closure)

**QUESTIONS****Site Characterization**

Please answer all the questions in this group (only required when seeking remediation plan approval and beyond). This information must be provided to the appropriate district office no later than 90 days after the release discovery date.

What is the shallowest depth to groundwater beneath the area affected by the release in feet below ground surface (ft bgs)	Between 100 and 500 (ft.)
What method was used to determine the depth to ground water	NM OSE iWaters Database Search
Did this release impact groundwater or surface water	No
<b>What is the minimum distance, between the closest lateral extents of the release and the following surface areas:</b>	
A continuously flowing watercourse or any other significant watercourse	Greater than 5 (mi.)
Any lakebed, sinkhole, or playa lake (measured from the ordinary high-water mark)	Greater than 5 (mi.)
An occupied permanent residence, school, hospital, institution, or church	Greater than 5 (mi.)
A spring or a private domestic fresh water well used by less than five households for domestic or stock watering purposes	Greater than 5 (mi.)
Any other fresh water well or spring	Greater than 5 (mi.)
Incorporated municipal boundaries or a defined municipal fresh water well field	Greater than 5 (mi.)
A wetland	Greater than 5 (mi.)
A subsurface mine	Greater than 5 (mi.)
An (non-karst) unstable area	Greater than 5 (mi.)
Categorize the risk of this well / site being in a karst geology	Low
A 100-year floodplain	Greater than 5 (mi.)
Did the release impact areas not on an exploration, development, production, or storage site	No

**Remediation Plan**

Please answer all the questions that apply or are indicated. This information must be provided to the appropriate district office no later than 90 days after the release discovery date.

Requesting a remediation plan approval with this submission	Yes
Attach a comprehensive report demonstrating the lateral and vertical extents of soil contamination associated with the release have been determined, pursuant to 19.15.29.11 NMAC and 19.15.29.13 NMAC.	
Have the lateral and vertical extents of contamination been fully delineated	Yes
Was this release entirely contained within a lined containment area	Yes
Per Subsection B of 19.15.29.11 NMAC unless the site characterization report includes completed efforts at remediation, the report must include a proposed remediation plan in accordance with 19.15.29.12 NMAC, which includes the anticipated timelines for beginning and completing the remediation.	
On what estimated date will the remediation commence	05/15/2024
On what date will (or did) the final sampling or liner inspection occur	05/15/2024
On what date will (or was) the remediation complete(d)	05/15/2024
What is the estimated surface area (in square feet) that will be remediated	0
What is the estimated volume (in cubic yards) that will be remediated	0
These estimated dates and measurements are recognized to be the best guess or calculation at the time of submission and may (be) change(d) over time as more remediation efforts are completed.	
The OCD recognizes that proposed remediation measures may have to be minimally adjusted in accordance with the physical realities encountered during remediation. If the responsible party has any need to significantly deviate from the remediation plan proposed, then it should consult with the division to determine if another remediation plan submission is required.	

**District I**

1625 N. French Dr., Hobbs, NM 88240  
Phone:(575) 393-6161 Fax:(575) 393-0720

**District II**

811 S. First St., Artesia, NM 88210  
Phone:(575) 748-1283 Fax:(575) 748-9720

**District III**

1000 Rio Brazos Rd., Aztec, NM 87410  
Phone:(505) 334-6178 Fax:(505) 334-6170

**District IV**

1220 S. St Francis Dr., Santa Fe, NM 87505  
Phone:(505) 476-3470 Fax:(505) 476-3462

**State of New Mexico**  
**Energy, Minerals and Natural Resources**  
**Oil Conservation Division**  
**1220 S. St Francis Dr.**  
**Santa Fe, NM 87505**

QUESTIONS, Page 4

Action 346445

**QUESTIONS (continued)**

Operator: DEVON ENERGY PRODUCTION COMPANY, LP 333 West Sheridan Ave. Oklahoma City, OK 73102	OGRID:	6137
	Action Number:	346445
	Action Type:	[C-141] Remediation Closure Request C-141 (C-141-v-Closure)

**QUESTIONS****Remediation Plan (continued)**

Please answer all the questions that apply or are indicated. This information must be provided to the appropriate district office no later than 90 days after the release discovery date.

**This remediation will (or is expected to) utilize the following processes to remediate / reduce contaminants:**

(Select all answers below that apply.)

Is (or was) there affected material present needing to be removed	Yes
Is (or was) there a power wash of the lined containment area (to be) performed	Yes
OTHER (Non-listed remedial process)	No

Per Subsection B of 19.15.29.11 NMAC unless the site characterization report includes completed efforts at remediation, the report must include a proposed remediation plan in accordance with 19.15.29.12 NMAC, which includes the anticipated timelines for beginning and completing the remediation.

I hereby certify that the information given above is true and complete to the best of my knowledge and understand that pursuant to OCD rules and regulations all operators are required to report and/or file certain release notifications and perform corrective actions for releases which may endanger public health or the environment. The acceptance of a C-141 report by the OCD does not relieve the operator of liability should their operations have failed to adequately investigate and remediate contamination that pose a threat to groundwater, surface water, human health or the environment. In addition, OCD acceptance of a C-141 report does not relieve the operator of responsibility for compliance with any other federal, state, or local laws and/or regulations.

I hereby agree and sign off to the above statement	Name: Dale Woodall Title: EHS Professional Email: Dale.Woodall@dmn.com Date: 05/21/2024
--	--

The OCD recognizes that proposed remediation measures may have to be minimally adjusted in accordance with the physical realities encountered during remediation. If the responsible party has any need to significantly deviate from the remediation plan proposed, then it should consult with the division to determine if another remediation plan submission is required.



**District I**

1625 N. French Dr., Hobbs, NM 88240  
Phone:(575) 393-6161 Fax:(575) 393-0720

**District II**

811 S. First St., Artesia, NM 88210  
Phone:(575) 748-1283 Fax:(575) 748-9720

**District III**

1000 Rio Brazos Rd., Aztec, NM 87410  
Phone:(505) 334-6178 Fax:(505) 334-6170

**District IV**

1220 S. St Francis Dr., Santa Fe, NM 87505  
Phone:(505) 476-3470 Fax:(505) 476-3462

**State of New Mexico**  
**Energy, Minerals and Natural Resources**  
**Oil Conservation Division**  
**1220 S. St Francis Dr.**  
**Santa Fe, NM 87505**

QUESTIONS, Page 6

Action 346445

**QUESTIONS (continued)**

Operator: DEVON ENERGY PRODUCTION COMPANY, LP 333 West Sheridan Ave. Oklahoma City, OK 73102	OGRID:	6137
	Action Number:	346445
	Action Type:	[C-141] Remediation Closure Request C-141 (C-141-v-Closure)

**QUESTIONS**

<b>Liner Inspection Information</b>	
Last liner inspection notification (C-141L) recorded	343500
Liner inspection date pursuant to Subparagraph (a) of Paragraph (5) of Subsection A of 19.15.29.11 NMAC	05/15/2024
Was all the impacted materials removed from the liner	Yes
What was the liner inspection surface area in square feet	7160

**Remediation Closure Request**

Only answer the questions in this group if seeking remediation closure for this release because all remediation steps have been completed.

Requesting a remediation closure approval with this submission	Yes
Have the lateral and vertical extents of contamination been fully delineated	Yes
Was this release entirely contained within a lined containment area	Yes
What was the total surface area (in square feet) remediated	0
What was the total volume (cubic yards) remediated	0
Summarize any additional remediation activities not included by answers (above)	the liner was inspected and there were no holes

The responsible party must attach information demonstrating they have complied with all applicable closure requirements and any conditions or directives of the OCD. This demonstration should be in the form of a comprehensive report (in .pdf format) including a scaled site map, sampling diagrams, relevant field notes, photographs of any excavation prior to backfilling, laboratory data including chain of custody documents of final sampling, and a narrative of the remedial activities. Refer to 19.15.29.12 NMAC.

I hereby certify that the information given above is true and complete to the best of my knowledge and understand that pursuant to OCD rules and regulations all operators are required to report and/or file certain release notifications and perform corrective actions for releases which may endanger public health or the environment. The acceptance of a C-141 report by the OCD does not relieve the operator of liability should their operations have failed to adequately investigate and remediate contamination that pose a threat to groundwater, surface water, human health or the environment. In addition, OCD acceptance of a C-141 report does not relieve the operator of responsibility for compliance with any other federal, state, or local laws and/or regulations. The responsible party acknowledges they must substantially restore, reclaim, and re-vegetate the impacted surface area to the conditions that existed prior to the release or their final land use in accordance with 19.15.29.13 NMAC including notification to the OCD when reclamation and re-vegetation are complete.

I hereby agree and sign off to the above statement	Name: Dale Woodall Title: EHS Professional Email: Dale.Woodall@dmn.com Date: 05/21/2024
--	--

**District I**  
1625 N. French Dr., Hobbs, NM 88240  
Phone:(575) 393-6161 Fax:(575) 393-0720  
**District II**  
811 S. First St., Artesia, NM 88210  
Phone:(575) 748-1283 Fax:(575) 748-9720  
**District III**  
1000 Rio Brazos Rd., Aztec, NM 87410  
Phone:(505) 334-6178 Fax:(505) 334-6170  
**District IV**  
1220 S. St Francis Dr., Santa Fe, NM 87505  
Phone:(505) 476-3470 Fax:(505) 476-3462

**State of New Mexico**  
**Energy, Minerals and Natural Resources**  
**Oil Conservation Division**  
**1220 S. St Francis Dr.**  
**Santa Fe, NM 87505**

CONDITIONS  
  
Action 346445

CONDITIONS

Operator: DEVON ENERGY PRODUCTION COMPANY, LP 333 West Sheridan Ave. Oklahoma City, OK 73102	OGRID:
	6137
	Action Number:
	346445
Action Type:	
[C-141] Remediation Closure Request C-141 (C-141-v-Closure)	

CONDITIONS

Created By	Condition	Condition Date
nvelez	Liner inspection approved, release resolved.	6/4/2024